



PROMENADE HILL PARK

GOALS

PROVIDE UNIVERSAL ACCESS

Provide equitable site access for people of all ages and abilities.

DESIGN A PLACE TO RECREATE

Create a series of flexible open spaces that can host a wide range of activities, from informal gathering to town events, performances and recreational opportunities.

CELEBRATE HISTORY

Preserve, restore and celebrate the historic park elements and their connection to the Hudson River as well as to the city streets.

ENHANCE THE GREEN

Foster a new site ecology with native trees and plants that will shade the park in summer and provide habitat for birds and pollinators throughout the seasons.



SCHEDULE

Community Outreach & Concept Design			Schematic Design		Final Design & Costing		Construction										Park Opening		
JUL	AUG	SEP	OCT	NOV	DEC	JAN	FEB	MAR	APR	MAY	JUN	JUL	AUG	SEP	OCT	NOV	DEC		
2020					2021														

HISTORY



1700s

On March 9, 1795, Hudson proprietors resolve by vote ‘that the certain piece of land known as the Parade, or Mall, in front of Main street (now Warren Street) and on the banks fronting the river, should be granted to the Common Council forever, as a public walk or Mall, and for no other purpose whatever.’



1800s

‘In ... 1878, the authorities took measures to improve the Promenade Hill, by the erection of an ornamental iron fence along the full length of its dangerous frontage, and by increased attention to its walks and lawn.’



1900s

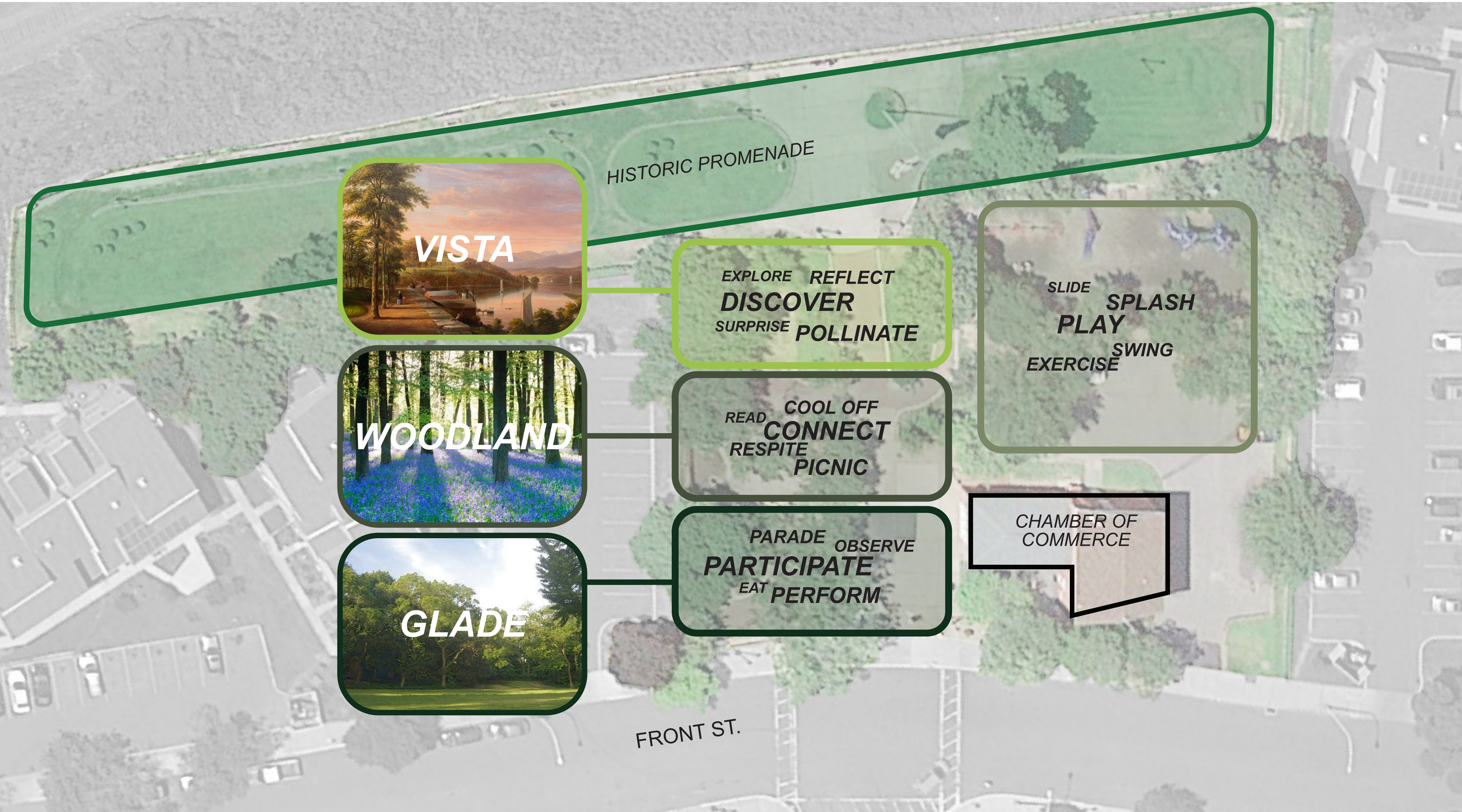
For most of the first half of the twentieth century, Warren St. ran directly to the base of the Promenade Hill Park steps. In the 1970s, Urban Renewal projects demolished many of the buildings at the western terminus of Warren St., and replaced the street end with a plaza park at the foot of the historic Promenade Hill .This park, including brick walls, play elements, seating and a large central plaza, remains virtually unchanged today.



2000s & beyond

In 2018, the City of Hudson was selected as a recipient of DRI funding to make Promenade Hill Park universally accessible. The community-driven design was kicked off in July 2020.

DESIGN APPROACH



MATERIALS

Simple materials such as stone, brick, steel, and concrete define the historic promenade. This material palette will be continued into the new plaza to create a tangible link to the park's past while providing a new and practical space for growth into the future.



POURED-IN-PLACE CONCRETE



BLUESTONE



CONCRETE UNIT PAVERS



NATURAL STONE

PLANTING

Use of open lawn panels, trees and defined areas of ornamental planting will connect the lower plaza more meaningfully to the historic upper promenade while maintaining ease of maintenance. Native plantings will attract people and pollinators.



OPEN LAWN



CANOPY SHADE TREES



UNDERSTORY FLOWERING TREES



NATIVE PERENNIALS

FURNISHINGS

Benches, tables, and chairs help to create an inviting and comfortable space. Style of furnishing can evoke a sense of history or can be playful and modern.



BENCHES



PICNIC BENCHES

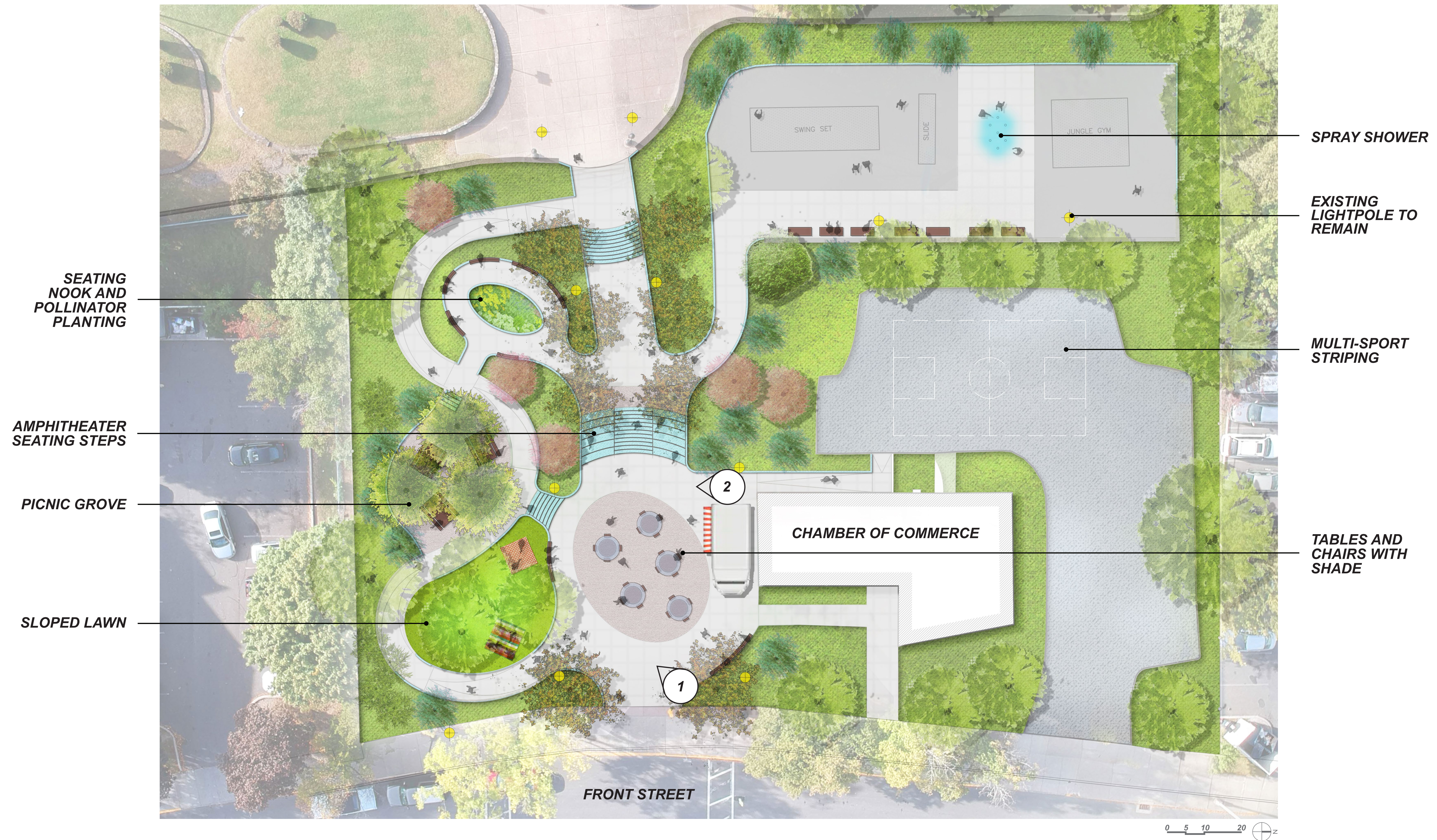


STACKED STONE BLOCKS



SEATING WITH SHADE

CONCEPT 1: THE MEANDER



HISTORIC PROMENADE

VISTA

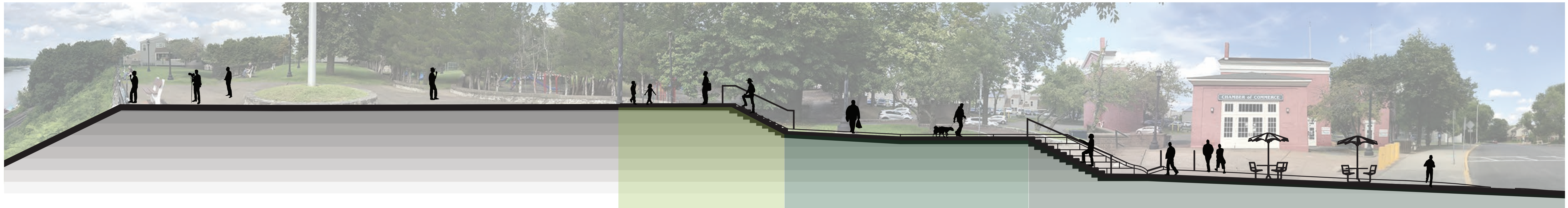
- REFLECT
- EXPLORE
- POLLINATE
- DISCOVER
- SURPRISE

WOODLAND

- CONNECT
- PICNIC
- RESPITE
- COOL OFF
- READ

GLADE

- PARTICIPATE
- PERFORM
- OBSERVE
- EAT
- PARADE



CONCEPT 2: THE TERRACE

