

ALPENA CITY COUNCIL MEETING

December 7, 2015 - 7:00 p.m.

AGENDA

1. Call to Order.
2. Pledge of Allegiance.
3. Approve Minutes – Regular Session of November 16, 2015, and Closed Session of November 16, 2015.
4. Modifications to the Agenda.
5. Citizens Appearing Before Council on Agenda and Non-Agenda Items (Citizens Shall be Allowed a Maximum of Five (5) Minutes Each to Address Their Concerns. This is the Only Time During a Council Meeting that Citizens are Allowed to Address the Council).
6. Consent Agenda.
  - A. Bills to be Allowed, in the Amount of \$565,519.02.
  - B. Approval of a \$25,000 Budget Amendment to Cover the Cost of 2<sup>nd</sup> Avenue Bridge Inspections, With \$20,000 From Fund Balance.
  - C. Approval of a Early Childhood Block Party/Child Health Fair in the City Hall Parking Lot on June 10, 2016.
  - D. Approval of 2016 Municipal Council Meeting Schedule.
7. Presentations.
8. Announcements.
9. Mayoral Proclamation.
10. Public Hearing.
11. Report of Officers.
  - A. Report on November 3, 2015, Election.
  - B. Consolidation of Precinct 1 and Precinct 2.
  - C. Resolution No. 2015-12 – A Resolution Granting Approval of an Application for a Neighborhood Enterprise Zone Certificate for Steve Straley, dba Alpena Furniture.
12. Communications and Petitions.

13. Unfinished Business.
  - A. Four-Ward Northeast Michigan – Resolution of Support.
14. New Business.

Greg E. Sundin  
City Manager

## **COUNCIL PROCEEDINGS**

**November 16, 2015**

The Municipal Council of the City of Alpena met in regular session in the City Hall on the above date and was called to order at 7:00 p.m. by the Mayor.

Present: Mayor Waligora, Councilmembers Nielsen, Nowak, Sexton and Johnson.

Absent: None

### **PLEDGE OF ALLEGIANCE**

The Pledge of Allegiance was recited.

### **MINUTES**

The minutes of the regular session of November 2, 2015, and the special session of November 5, 2015 were approved as printed.

### **CONSENT AGENDA**

Moved by Councilmember Nowak, seconded by Councilmember Johnson, that the following Consent Agenda item be approved:

1. Bills Allowed – in the amount of \$1,064,356.31 be allowed and the Mayor and City Clerk authorized to sign warrants in payment of same.

Carried by unanimous vote.

### **MEMORANDUM OF UNDERSTANDING**

#### **DUCK PARK AND ALPENA POWER COMPANY**

Moved by Councilmember Sexton, seconded by Councilmember Nielsen, that the Memorandum of Understanding for the property commonly known as Duck Park, and the property commonly referred to as the former Alpena Power Company building, be approved, to further the process of transactions between the City of Alpena, Alpena Power Company, the Fletcher Family Interest, and Target Alpena Development Corporation.

Carried by unanimous vote.

### **RESOLUTION NO. 2015-14**

#### **FOUR-WARD NORTHEAST MICHIGAN**

Moved by Councilmember Nowak, seconded by Councilmember Sexton, that Resolution No. 2015-14, a resolution of support for a public four year university in Northeast Michigan be tabled until the December 7, 2015 council meeting.

Carried by unanimous vote.

**CLOSED SESSION**

Moved by Councilmember Sexton, seconded by Councilmember Johnson, that the Municipal Council adjourn to a closed session at 7:35 p.m. to discuss labor negotiations with the Police Command Union.

Carried by unanimous vote.

**RECESS**

The Municipal Council recessed at 7:35 pm.

**RECONVENE – OPEN SESSION**

Moved by Councilmember Nowak, seconded by Councilmember Neilsen, that Municipal Council reconvene in open session at 8:04 p.m.

**ALPENA POLICE COMMAND OFFICERS ASSOCIATION UNION CONTRACT**

Moved by Councilmember Nowak, seconded by Councilmember Neilsen, that the contract with the Alpena Police Command Officers Association and the Michigan Fraternal Order of Police Labor Council, covering July 1, 2015 through June 30, 2017, be ratified.

Carried by unanimous vote.

On motion of Councilmember Nowak, seconded by Councilmember Johnson, the Municipal Council adjourned at 8:04 p.m.

MATTHEW J. WALIGORA  
MAYOR

ATTEST:

Karen Hebert  
City Clerk

## INVOICE REGISTER

Page: 1/3

EXP CHECK RUN DATES 12/08/2015 - 12/08/2015  
 BOTH JOURNALIZED AND UNJOURNALIZED  
 OPEN

6.A

VENDOR	INVOICE #	DESCRIPTION	AMOUNT
ADRIENNE THOMPSON	112715	TRAVEL EXPENSE - AMB	75.23
AIRGAS USA LLC	9044966780	SUPPLIES - AMB DISP	116.88
AIRGAS USA LLC	9931567234	VEH MAINT - DPW	59.40
AIRGAS USA LLC	9931570586	SUPPLIES - AMB DISP	16.20
AIRGAS USA LLC	9045260444	SUPPLIES - AMB DISP	32.65
AIRGAS USA LLC	9045490276	SUPPLIES - AMB DISP	32.65
AIRGAS USA LLC	9045674955	VEH MAINT - DPW	22.46
AIRGAS USA LLC	9045727884	SUPPLIES - AMB DISP	32.65
AIRGAS USA LLC	9045816131	SUPPLIES - AMB DISP	40.85
AKT PEERLESS	40252	ENERGY AUDIT - PUBLIC SAFETY BLDG	818.30
ALPENA AGENCY INC	34753	INSURANCE - GENERAL	139,176.00
ALPENA DIESEL SERVICE	12969	VEH MAINT #45	665.47
ALPENA DIESEL SERVICE	48272	VEH MAINT #45	282.92
ALPENA DIESEL SERVICE	48310	VEH MAINT #45	60.40
ALPENA DIESEL SERVICE	48329	VEH MAINT - DPW	22.27
ALPENA DIESEL SERVICE	48378	VEH MAINT #36	16.94
ALPENA DIESEL SERVICE	48380	VEH MAINT - DPW	149.02
ALPENA DIESEL SERVICE	48382	VEH MAINT #39	90.00
ALPENA MEDICAL ARTS CLINIC PC	1537 11/15	EMPLOYEE PHYS - C/T/POL	207.00
ALPENA PAPER & SUPPLY CO	46372	SUPPLIES - AMB DISP	135.99
ALPENA PAPER & SUPPLY CO	463907	SUPPLIES - AMB DISP	106.01
ALPENA POWER COMPANY	120815	ELECTRIC	3,583.68
ALPENA POWER COMPANY	111815	SVC CONNECTION FEE - WOODWARD TRLHI	943.00
ALPENA RADIOLOGY PC	A80920701	EMPLOYEE PHYS - POLICE	27.00
ALPENA RADIOLOGY PC	A8032496	EMPLOYEE PHYS - POLICE	27.00
ALPENA REGIONAL MEDICAL CENTER	110515	SUPPLIES - AMB DISP	605.00
AMERICAN UNITED LIFE INSURANCE	30320 12/15	PREMIUM-LIFE 12/15	1,000.99
ANDY MARCEAU	110215	TRAVEL EXPENSE - AMB	52.33
ANDY WILLIAMS	112015	TRAVEL EXPENSE - AMB	25.70
ARGUS-HAZCO	04095705	SUPPLIES - FIRE	368.21
ARGUS-HAZCO	04096711	SUPPLIES - FIRE	(350.00)
BARBARA GOODBURN	110315	BD OF CANVASSERS - ELECTION	41.50
BC/BS OF MICHIGAN	64088 12/15	PREMIUM-HEALTH 12/15	71,675.62
BEAVER RESEARCH COMPANY	0237553-IN	SUPPLIES - FIRE/AMB/EQ	108.00
BEDROCK CONTRACTING &	89969	REPL CURB/GUTTER/SIDEWALK - BINGHAM	1,199.25
BELL EQUIPMENT COMPANY	111208	2015 ELGIN STREET SWEEPER	(980.88)
BELL EQUIPMENT COMPANY	115083	VEH MAINT - DPW	1,272.85
BEVERLY BODEM	110315	BD OF CANVASSERS - ELECTION	31.73
BOUND TREE MEDICAL LLC	81950619	SUPPLIES - AMB DISP	196.40
BOUND TREE MEDICAL LLC	81969681	SUPPLIES - AMB DISP	281.54
BOUND TREE MEDICAL LLC	81970873	SUPPLIES - AMB DISP	30.58
BOUND TREE MEDICAL LLC	61352084	SUPPLIES - AMB	336.98
BRETT MILLER	112915	TRAVEL EXPENSE - AMB	100.56
BRIAN BEATTY	112115	SAFETY SHOE ALLOW - PW	127.18
BROAD'S BOOK REPAIR	111415	REFURBISH CEMETERY LEDGER	290.00
CALEB BORCHARD	110715	TRAVEL EXPENSE - AMB	20.48
CHRISTIAN ANTON	112115	TRAVEL EXPENSE - AMB	82.09
CHRISTOPHER MORRISON	112915	TRAVEL EXPENSE - AMB	32.53
CITY OF ALPENA	213-001 1115	SEW/WATER - MCRAE PK	558.76
CITY OF ALPENA	214-001 1115	SEW/WATER - MCRAE CONC STND	65.76
CITY OF ALPENA	214-007 1115	SEW/WATER - 9TH AVE TWR	525.81
CITY OF ALPENA	4524-001 1115	SEW/WATER - LONG LK COLD STORAGE	56.36
CITY OF ALPENA	6431-002 1115	SEW/WATER - N RIVERFRONT PK	733.71
CITY OF ALPENA	6432-001 1115	SEW/WATER - LONG LK AVE	1,061.29
DANIEL HIBNER	111515	TRAVEL EXPENSE - AMB	93.58
DEAN RIVARD	112215	TRAVEL EXPENSE - AMB	35.88
DONALD H GILMET	113015	MILEAGE 11/15	130.53
DORNBOS SIGN & SAFETY INC	23614	MAINT - MAJ/LOC ST	30.84
DORNBOS SIGN & SAFETY INC	23670	TRAFF CONTROL MAINT - MAJ ST	674.45
DOUGLAS KEOGH	113015	TRAVEL EXPENSE - AMB	29.05
EAGLE ENGINEERING & SUPPLY CO	47809	MAINT - LIGHTS	337.08
EAST SHORE ASPHALT PAVING	2015-07	HMA PATCHING 2015	4,614.26
ELAINE FORTIER	110315	BD OF CANVASSERS - ELECTION	46.68
EMERY ENTERPRISES	27287	SUPPLIES - CODE ENF	10.90
ETNA SUPPLY CO	S101612583.001	STORES - FERNCO	310.00
ETNA SUPPLY CO	S101617295.001	MAINT - WATER	1,498.00
FAMILY ENTERPRISE EMBROIDERY	50617	UNIFORMS - FIRE/AMB	50.00
FASTENAL COMPANY	MIALP129660	VEH MAINT - DPW	21.72
FRANCIS ROSINSKI	113015	ELECTRICAL INSP SVCS 11/15	1,576.00
FRONTIER	4-0167 11/15	TELEPHONE - WATER	134.41
FRONTIER	6-2515 11/15	TELEPHONE - WATER	50.89
FRONTIER	6-2992 11/15	TELEPHONE - WATER	113.22

## INVOICE REGISTER

Page: 2/3

EXP CHECK RUN DATES 12/08/2015 - 12/08/2015  
 BOTH JOURNALIZED AND UNJOURNALIZED  
 OPEN

VENDOR	INVOICE #	DESCRIPTION	AMOUNT
FRONTIER	9535 12/15	TELEPHONE - SEWER	516.90
GALLS LLC	4380445	UNIFORMS - POLICE	29.94
GALLS LLC	4381036	UNIFORMS - POLICE	41.98
GARANTS OFFICE SUPPLIES & PRINTING	60912	SUPPLIES - PUBLIC SAFETY	95.00
GBS GOVT BUSINESS SYSTEMS	15-23384	SUPPLIES - ELECTION	3,043.31
GLOBAL GOV/ED SOLUTIONS INC	L81009160102	COUNCIL CHAMBERS PROJECTORS	49.94
HALLS SERV-ALL	T110615	RENTAL FEE - PARKS	72.62
HANSEN SALES & SERVICE	20728	VEH MAINT #43	42.72
HAROLD KNOPP	111615	TRAVEL EXPENSE - AMB	15.00
HAVILAND	179298	SODIUM HYPOCHLORITE - SEWER	4,013.08
HOME DEPOT CREDIT SERVICES	9060018	BLDG MAINT - FIRE/AMB	12.46
HOME DEPOT CREDIT SERVICES	8060083	BLDG MAINT - FIRE/AMB	1.04
HOME DEPOT CREDIT SERVICES	5060248	SUPPLIES - FIRE/AMB	40.00
HOME DEPOT CREDIT SERVICES	4581443	SUPP/BLDG MAINT - FIRE/AMB	37.09
HOME DEPOT CREDIT SERVICES	4591084	BLDG MAINT - FIRE/AMB	2.58
HOME DEPOT CREDIT SERVICES	3060373	COUNCIL CHAMBERS PROJECTORS	59.47
HOME DEPOT CREDIT SERVICES	1072669	BLDG MAINT - FIRE/AMB	53.03
HOME DEPOT CREDIT SERVICES	1215	COUNCIL CHAMBERS PROJECTORS	14.96
HOME DEPOT CREDIT SERVICES	1591217	COUNCIL CHAMBERS PROJECTORS	7.98
HOME DEPOT CREDIT SERVICES	8100607	COUNCIL CHAMBERS PROJECTORS	(49.10)
INK AND TONER ALTERNATIVE	15-44846	SUPPLIES - IT	615.88
INTEGRITY BUSINESS SOLUTIONS	1297463-0	SUPPLIES - PUBLIC WORKS	18.54
JAMES STACHLEWITZ	112315	TRAVEL EXPENSE - AMB	64.15
JEFFERY KING	112515	TRAVEL EXPENSE - AMB	43.39
JEWELLS DISPOSAL SERVICE INC	111715	TRASH REMOVAL - CODE ENF	10.00
KATHY HIMES	111115	TRAVEL EXPENSE - MGR	25.21
LAKESHORE PLUMBING, HEATING &	31455	MAINT - PUBLIC WORKS	830.00
LARRY'S AUTO COLLISION	7731	SUPPLIES - POLICE	197.00
LEFAVE PHARMACY INC	111315	SUPPLIES - AMB DISP	20.00
LESSLEE DORT	120115	REIMB CELL PHONE EXP - DDA	60.00
MANAGEMENT & BEHAVIOR	110415	EMP EVALUATION - POLIC E	975.00
MARK MOUSSEAU	111015	PARKING ATTENDANT SVCS - DDA	358.60
MARK MOUSSEAU	112515	PARKING ATTENDANT AVCS - DDA	277.10
MCDONALD AUTO SUPPLY INC	795659	VEH MAINT - FIRE EQ	10.95
MHR BILLING	2479	BILLING 09/15 - AMBULANCE	11,390.07
MICH STATE FIREMENS ASSOC	111015	2016 MEMBERSHIP DUES	75.00
MICHAEL SANDERS	112715	TRAVEL EXPENSE - AMB	46.93
MICHIGAN ASSESSORS ASSN	3041-16	2016 MEMBERSHIP DUES	75.00
MICHIGAN POLICE EQUIP CO	164688	UNIFORMS - POLICE	114.00
MICHIGAN STATE INDUSTRIES	1241A	SUPPLIES - CEM/PW/PKS/EQ	252.00
MISS DIG SYSTEM INC	20160066	2016 PARTICIPATION FEE	2,517.03
MUNICIPAL CODE CORPORATION	263094	YEARLY ORDINANCE INTERNET FEE	550.00
MUTUAL OF OMAHA	074L5 12/15	PREMIUM-DISABILITY 12/15	833.02
OFFICE DEPOT	797330839001	SUPPLIES - PUBLIC SAFETY	23.71
OFFICE DEPOT	797330995001	SUPPLIES - PUBLIC SAFETY	15.87
OFFICE DEPOT	798235635001	SUPPLIES - PUBLIC SAFETY	24.47
OFFICE DEPOT	798235636001	SUPPLIES - POLICE	18.69
OFFICE DEPOT	798780818001	SUPPLIES - POLICE	9.87
OFFICE DEPOT	799778957001	SUPPLIES - PUBLIC SAFETY	26.50
OFFICE DEPOT	800420908001	SUPPLIES - FIRE	12.10
OFFICE DEPOT	800426861001	SUPPLIES - PUBLIC SAFETY	22.37
OFFICE DEPOT	801612781001	SUPPLIES - POLICE	26.28
OFFICE DEPOT	802265516001	SUPPLIES - POLICE	12.10
OFFICE DEPOT	802509075001	SUPPLIES - FIRE/AMB	20.16
PITNEY BOWES INC	5502842429	SUPPLIES - CITY HALL	140.47
PLS PRINTING SERVICES LLC	49080	SUPPLIES - ASSESSOR	63.00
PRIORITY ONE EMERGENCY	70013767	UNIFORMS - FIRE/AMB	119.98
QUILL CORPORATION	9261635	SUPPLIES - CITY HALL	133.24
QUILL CORPORATION	9376860	SUPPLIES - C/T/ASSESS	30.90
QUILL CORPORATION	9393356	SUPPLIES - CITY HALL	74.99
QUILL CORPORATION	9773131	SUPPLIES - CLERK/TREAS	131.43
RESERVE ACCOUNT-PITNEY BOWES	120115	POSTAGE - MAIL MACHINE	3,000.00
ROBERT ADRIAN	120815	TRAINING EXPENSE - FIRE	350.00
ROBERT ADRIAN	110415	TRAVEL EXPENSE - AMB	45.21
ROWLEYS WHOLESALE	1824930-00	VEH MAINT - DPW	212.89
ROWLEYS WHOLESALE	1824938-00	VEH MAINT - DPW	675.45
ROWLEYS WHOLESALE	1825976-00	VEH MAINT - DPW/FIRE EQ	541.97
ROWLEYS WHOLESALE	1824939-00	VEH MAINT - DPW	1,098.50
RYAN HENDRICKS	112715	PARKING ATTENDANT SVCS - DDA	468.00
SCIENTIFIC BRAKE & EQUIPMENT	3253150007	VEH MAINT #25	206.57
SEVAN K INC	313 10/15	VEH MAINT - POLICE	141.62
SHELL FLEET PLUS	79036133511	UNLEADED GAS/FUEL-POL/F/A/GEN/MICU	1,563.86

# INVOICE REGISTER

Page: 3/3

EXP CHECK RUN DATES 12/08/2015 - 12/08/2015  
BOTH JOURNALIZED AND UNJOURNALIZED  
OPEN

VENDOR	INVOICE #	DESCRIPTION	AMOUNT
SIRCHIE FINGERPRINT LABORATORIES	0231325-IN	SUPPLIES - POLICE	41.89
STAPLES ADVANTAGE	8036753523	SUPPLIES - CH/PSF	849.75
STATE OF MICHIGAN	MIDEAL-17/16	EXTENDED PURCHASING FEE	180.00
STRALEY LAMP & KRAENZLEIN PC	23273	MONTHLY FEE 10/15	3,055.00
SUEZ WATER INC	201525049A	CONT OPERATIONS 10/15	131,725.37
SUEZ WATER INC	201526162	CONT OPERATIONS 10/15	21,822.24
SUPERIOR FABRICATING INC	14297	VEH MAINT #25	35.00
SUPERIOR FABRICATING INC	14298	VEH MAINT - FIRE EQ	22.00
SUSAN A MUSZYNSKI ATTY-IN-FACT	111915	PROPERTY - 703 RIVER ST	7,536.05
SUSAN NIELSEN	091815	TRAVEL EXPENSE - COUNCIL	155.25
SUSAN NIELSEN	113015	TRAVEL EXPENSE - COUNCIL	41.24
TED FESTERLING LLC	5175	VEH MAINT - DPW	340.00
TERMINAL SUPPLY CO	67963-00	VEH MAINT - DPW	62.51
THE LINCOLN NATIONAL LIFE	202473 12/15	PREMIUM-DENTAL 12/15	8,670.78
THE UPS STORE 5054	110915	SHIPPING FEES	39.20
THUNDER BAY SHORES MARINE	120115	MARINA RES SYSTEM REV SHARE	368.14
TRUGREEN PROCESSING CENTER	41725726	MAINT - CEMETERY	35.00
TYLER SUSZEK	112715	TRAVEL EXPENSE - AMB	15.00
TYLER SUSZEK	111515	TRAVEL EXPENSE - AMB	28.88
ULINE	72251857	SUPPLIES - POLICE	122.56
UNITEX DIRECT	133617	UNIFORMS - POLICE	1,338.48
UNITEX DIRECT	134550	UNIFORMS - POLICE	549.06
UNITEX DIRECT	134730	UNIFORMS - POLICE	306.23
VALLEY TRUCK PARTS INC	3-1194782	VEH MAINT #36	972.04
VALLEY TRUCK PARTS INC	1-1287952	VEH MAINT #47	990.61
VALLEY TRUCK PARTS INC	1-1292305	INTL DUMP TRUCK UPGRADE	90,226.50
VERIZON WIRELESS	9755332709	TELEPHONE	565.65
VERIZON WIRELESS	9755411450	TELEPHONE	914.78
VISA/ELAN FINANCIAL SERVICES	8489 11/15	TR EXP/TRAINING REG-MGR/C/T/ENG/POL/PA	625.65
WAL-MART	5190	SUPPLIES - POLICE	92.41
WAL-MART	8139	SUPPLIES - CITY HALL	45.10
WAL-MART	4103	SUPPLIES - FIRE/AMB	64.22
WAL-MART	6888	SUPPLIES - FIRE/AMB	7.91
WAL-MART	5682	SUPPLIES - FIRE/AMB	126.72
WEST END DISTRIBUTING	26403	SUPPLIES - POLICE	45.50
WILLIAM WITTER	112515	DEMOLITION - 131 E FLETCHER	12,000.00
WITMER PUBLIC SAFETY GROUP	E1396837	SUPPLIES - FIRE	266.34
YOUNG APPLIANCE CO	67138	SUPPLIES - FIRE/AMB	87.64

**Total: 557,087.56**

CHECKS RAN ON 11/20/15 IN ORDER TO AVOID LATE FEES  
(BREAKDOWN OF INVOICES PAID ATTACHED)

8,431.46

-----

TOTAL FOR 12/7/15 COUNCIL MEETING

565,519.02

**INVOICE REGISTER**

Page: 1/1

EXP CHECK RUN DATES 11/20/2015 - 11/20/2015  
BOTH JOURNALIZED AND UNJOURNALIZED  
OPEN

<b>VENDOR</b>	<b>INVOICE #</b>	<b>DESCRIPTION</b>	<b>AMOUNT</b>
ALPENA POWER COMPANY	112015	ELECTRIC	8,334.30
FRONTIER	2793 11/15	TELEPHONE - POL/FIRE/AMB	97.16
		<b>Total:</b>	<b>8,431.46</b>



# BUDGET AMENDMENT REQUEST

RECEIVED  
NOV 12

6.B.

FUND: Major Street  
DEPARTMENT: Construction  
PROJECT: 2nd Ave Bridge

CITY OF ALPHEA  
CLERK / TREAS / FIN DIRECTOR

Account No.	Account Description	Current Budget	Proposed Increase or (Decrease)	Proposed Budget
202-451-783-202	Cont. MDOT	\$55,000	\$25,000	\$80,000
Fund Balance			(\$20,000)	(\$20,000)
202-451-782-000	Mat/Cont Streets	\$159,000	(\$5,000)	\$154,000

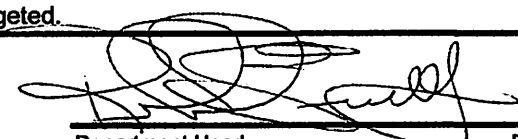
## Justification for Budget Amendment


\$20,000 was left in fund balance at the end of last fiscal year in this line item. The detailed and underwater inspections needed prior to design were \$79,000. This was more than the anticipated funding established of \$55,000. Once we have a cost for design engineering additional funding will need to be budgeted.

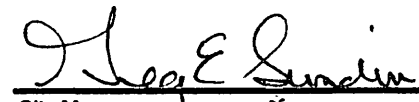
## Michigan Uniform Accounting and Budget Act:

\*\* Requires budget amendments before any expenditures exceed the budget.

\*\* The City Manager and City Clerk/Treasurer/Finance Director are authorized by the Municipal Council to make budgetary transfers within the departments established through this budget. All transfers between departments or funds or from fund balance may be made only by further action of the Municipal Council.

  
Department Head 11-11-15  
Date

  
Clerk/Treasurer 11-16-15  
Date

  
City Manager 11-17-15  
Date



City Hall  
208 North First Avenue  
Alpena, Michigan 49707  
[www.alpena.mi.us](http://www.alpena.mi.us)

## MEMORANDUM

To: City Council

From: Karen Hebert, City Clerk

Date: November 24, 2015

Subject: Early Childhood Block Party/Child Health Fair

Heather Martin, Parent Liaison, from the AMA ESD Great Start Parent Coalition would like to host an Early Childhood Block Party/Child Health Fair in the City Hall parking lot (whole lot) and on Park Street. (Originally she requested all 3 streets around the parking lot to be closed but this was not approved by the Engineering Department/Fire/Police Department). Heather is fine with the whole parking lot and Park Place closure.

Her preferred dates are in order: Friday, June 10<sup>th</sup>, Friday, June 17<sup>th</sup> and Friday, June 3<sup>rd</sup> – from 4:30 to 7:00pm.

The Health Fair would include games, activities, and to allow the health services field to set up booths to inform families of the services offered. The event would be free of charge to families.

The activities would include kids' yoga/Zumba, bounce house, a veggie tasting station, and a band to play children's music.

DPW would provide barricades for the City parking lot and Park Place closure, the Fire/EMS said they would participate and have units there to interact with the kids.

She will need to contact Mr. Jeff Konczak, Harborside Mall Owner, about the north access drive entrance, we will provide her with the contact information.

## NOTICE

### Municipal Council Meeting Schedule – 2016

The regular meetings of the City of Alpena Municipal Council for 2016 are as follows:

January	4	* July	5 (Tuesday)
January	18	July	18
February	1	August	1
February	15	August	15
March	7	* September	6 (Tuesday)
March	21	September	19
April	4	October	3
April	18	October	17
May	2	November	7
May	16	November	21
June	6	December	5
June	20	December	19

\*City Hall Closed on Monday

All of the above regular meetings begin at 7 p.m. at the Council Chambers at City Hall.

CITY OF ALPENA

By: Karen Hebert  
City Clerk/Treasurer/Finance Director

Approved by Municipal Council – December 7, 2015  
Posted – December 7, 2015



# Memorandum

Date: December 1, 2015

To: Mayor Waligora and Municipal Council Members

From: Karen Hebert, Clerk/Treasurer/Finance Director

Subject: General Election Report for November 3, 2015

In response to the Mayor's request for a brief report on the results of the November 3, 2015 General Election I have put together the following information. The election results were:

<u>Dial-A-Ride (DART) Millage</u>	Yes	462
	No	208

## Mayor

Waligora	595
----------	-----

## Council Members

Nielsen	514
Nowak	547

The City of Alpena currently has 8,085 registered voters. The turnout at the polls for the General Election was 676 or 8.36%. This is a very low turn-out but not surprising with unopposed seats and a non-controversial proposal. A typical odd-year election can have some or all of the following; municipal council, school board, college board and/or local proposals. The voter turn-out would be 15-20%. A State election would have about 37% voter turnout, and a Presidential election would have 57%.

The total cost to administer the November 3<sup>rd</sup> election was \$10,900. The largest expenses were the Precinct Worker's payroll at a cost of \$4,611, and the ballots/memory cards at a cost of \$3,043. DPW and Clerical labor costs were \$1,312, and newspaper notices cost \$1,111. The balance of the costs were for the rental of the precinct locations, Board of Canvassers, and mailing costs.

Whether a small or large election, the same process is necessary from start to finish so the size of the election has little bearing on the administration time. All election types begin approximately three months before the election. There are nominating petitions and proposals to be checked, supplies to order and prepare, equipment to test, poll books to load, and training as necessary. Costs would be slightly higher for a larger election because more ballots would be necessary.



# Memorandum



Date: December 7, 2015

To: Mayor Waligora and Municipal Council

From: *Ke*  
Karen Hebert, Clerk/Treasurer/Finance Director

Subject: Consolidation of Precinct 1 and Precinct 2

By City Charter, Sec. 14.5, the Election Commission consisting of the Mayor, Attorney and Clerk, is tasked with the operations of the elections in the City. In an effort to save considerable resources, we will meet after the Council meeting to discuss the consolidation of Precinct 1 and Precinct 2.

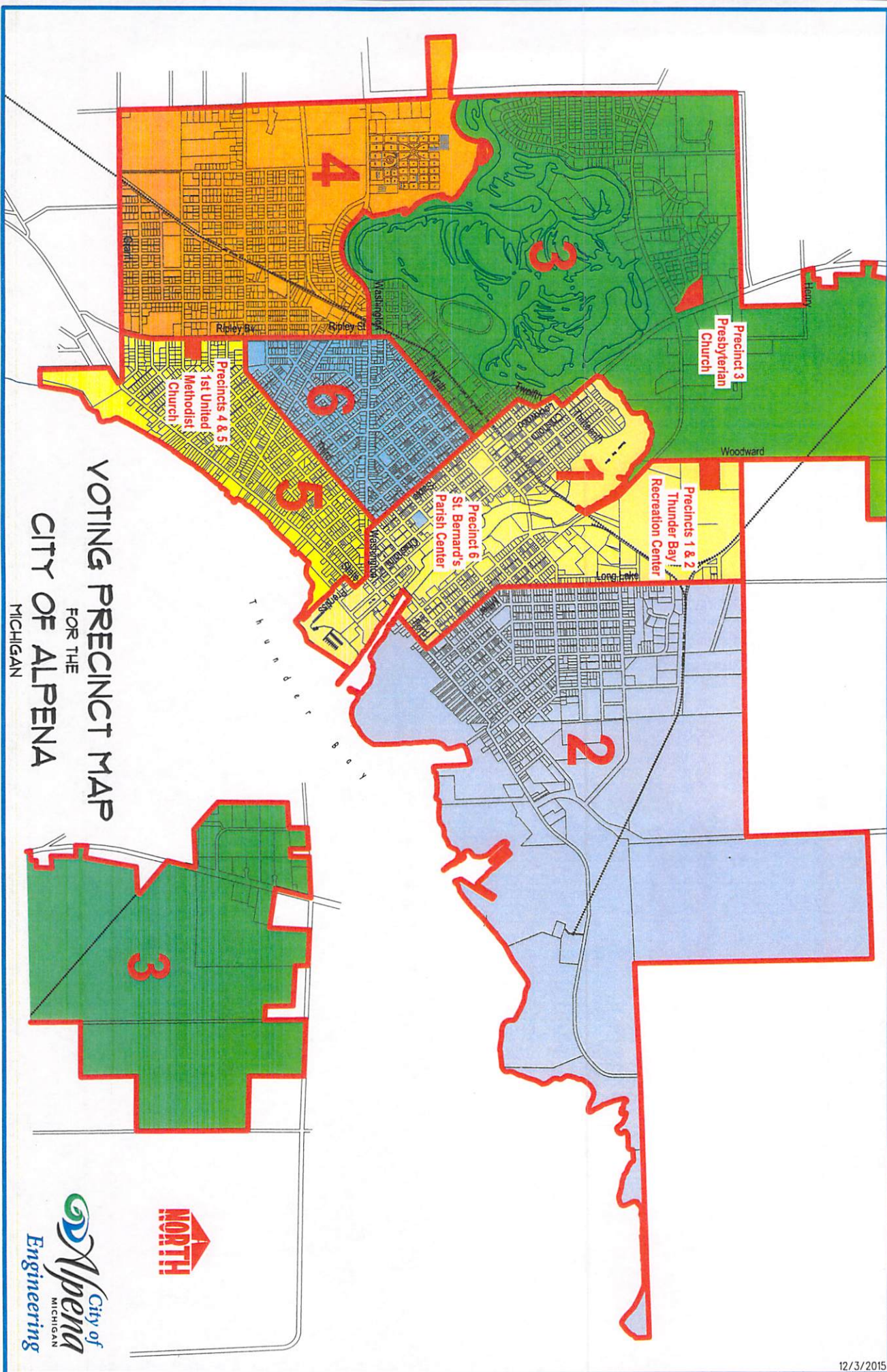
The City currently has six precincts and 8,085 registered voters. The number of registered voters in each precinct is fairly even with Precinct 6 having the most at approximately 1,600. State Law allows up to 2,999 registered voters per precinct. By combining Precinct 1 and 2, the registered voters would be approximately 2,500. Though this amount is much higher than the other precincts, historically, the voter turnout is lower in these two precincts. Below is the voter turnout for both of the last two large November elections.

	<u>November 6, 2012</u>	<u>November 4, 2014</u>
Precinct 1	179	138
Precinct 2	186	151
Precinct 3	402	333
Precinct 4	406	379
Precinct 5	391	369
Precinct 6	320	276

By combining the two precincts there will be savings in supplies, labor, and equipment. The savings would be \$1,000 to \$1,500 per election, not including equipment such as tabulators and laptops. With the introduction of the laptop poll books it has been more difficult to find precinct workers so combining precincts would reduce the number of precinct workers needed. Both Precincts are located at the APlex so there would not be a location change.

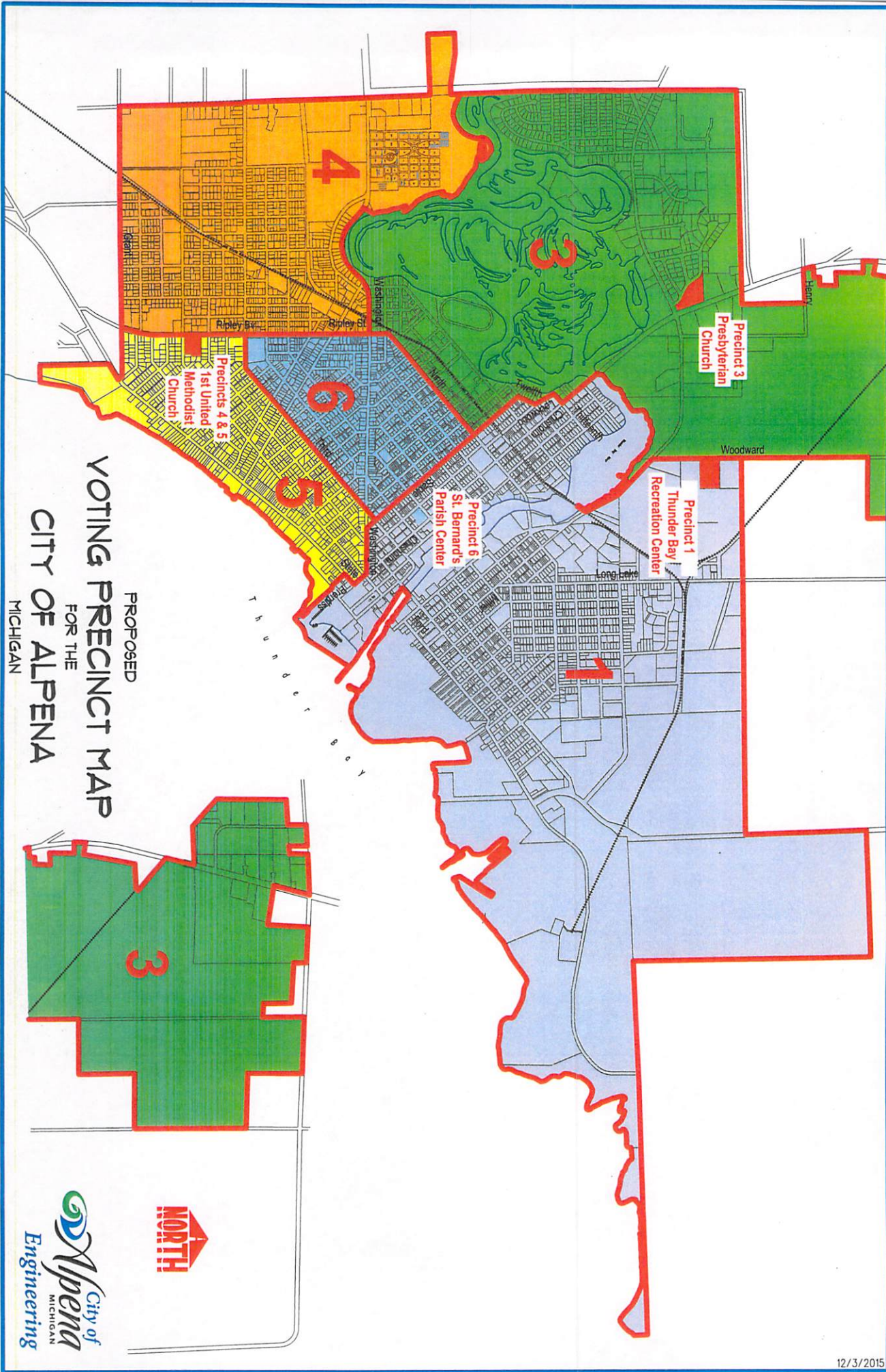
In order to merge the two precincts I must submit the information to the State by January and send out new voter I.D. cards to those registered voters in Precinct 2.





VOTING PRECINCT MAP  
FOR THE  
CITY OF ALPENA  
MICHIGAN







# Memorandum



Date: December 1, 2015

To: Mayor Waligora and Municipal Council Members

From: Karen Hebert, City Clerk/Treasurer/Finance Director

Subject: Neighborhood Enterprise Zone (NEZ) Application  
Steve Straley, dba Alpena Furniture

---

The City of Alpena established a Neighborhood Enterprise Zone on October 6, 2003. A Neighborhood Enterprise Zone provides for the development and rehabilitation of residential housing by obtaining certificates for a period of time that provides exemption for certain taxes. The City Assessor calculates the taxes to be levied which are known as the neighborhood enterprise zone tax.

Steve Straley, dba Alpena Furniture, submitted an application on October 14, 2015, for an existing structure at 325 N. 2<sup>nd</sup> Avenue for a 12 year tax exemption. The application has been reviewed by Jeff Shea, City Assessor and Don Gilmet, City Building Inspector and found to be favorable.

Under Public Act 147, The State Tax Commission requires the governing body of the local governmental unit by resolution to approve the application for a neighborhood enterprise zone certificate. City Staff is recommending approval of Resolution No. 2015-12.

If so approved, I will forward the resolution to the State Tax Commission within the required time period. The State Tax Commission will then review the application for compliance. The City Assessor and all taxing units affected will be notified by certified mail if a certificate will be issued.



# Memorandum



Date: October 20, 2015

To: Karen Hebert, City Clerk/Treasurer/Finance Director

From: Jeff Shea, City Assessor and Donald Gilmet, City Building Official

Subject: NEZ Application from Steve Straley, 325 N. Second Avenue

For each Neighborhood Enterprise Zone (NEZ) application the Assessor and Building Official must make several determinations as part of the approval process. This memo addresses all those determinations.

## **Assessor Determinations:**

1. Is the current true cash value of the property being rehabilitated less than \$80,000 per unit?
  - a. Yes, the current true cash value of each unit is approximately \$7,300.00.
2. Is the current owner the same as listed on the NEZ application form?
  - a. Yes. See attached deed.
3. The Assessor attaches the legal description, dimensions of the lot and the parcel identification number.
  - a. See attached.
4. Do the project costs meet the requirements of the Neighborhood Enterprise Zone Act?
  - a. Yes.
    - i. For a rehabilitated facility, with work done by a contractor in a rental unit, the cost requirement is that \$7,500 per unit or 50% of the true cash value of the unit, whichever is less, must be invested in the rehabilitation.
    - ii. For this facility it is estimated that \$90,759 will be spent in rehabilitating each of the 10 units, for a total project cost of \$907,590. This meets the requirements of the NEZ Act.
5. Statement by assessor showing the taxable value of the rehabilitated facility not including land, for the tax year immediately preceding the effective date of the rehabilitation.
  - a. The 2015 taxable value of the property being rehabilitated is \$192,328 and the State Equalized Value is \$202,500, including land value. However, the only part of the property being rehabilitated is the second floor of the building on the lot. The 2015 taxable value for the part of the building being rehabilitated is apportioned as follows:
    - i. 2015 Taxable Value: \$ 34,486
    - ii. 2015 State Equalized Value: \$ 36,300

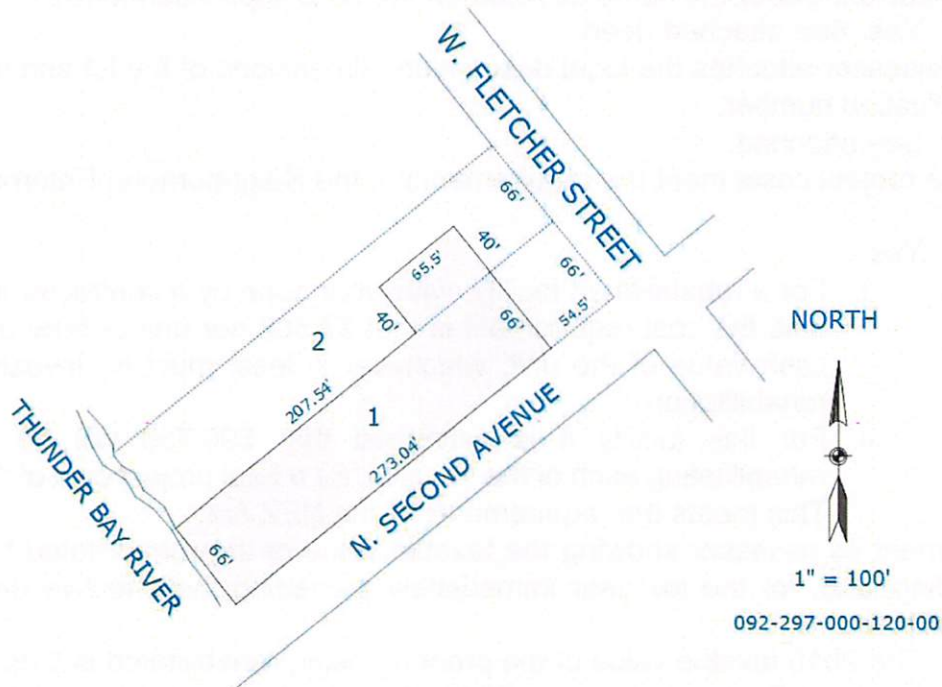
Attachment to Assessor's Statement  
NEZ Application by Steve Straley  
325 N. Second Avenue

Legal description, lot dimensions and parcel identification number for NEZ application by Steve Straley/Alpena Furniture, 325 N. Second Avenue, located in the Downtown Neighborhood Enterprise Zone #1, City of Alpena.

Parcel Identification Number: 04-092-297-000-120-01

Legal Description:

SITUATED IN THE CITY OF ALPENA, COUNTY OF ALPENA, AND STATE OF MICHIGAN. (UPSTAIRS APARTMENTS) THE 2ND STORY OF A BLDG LOCATED ON PROPERTY DESCRIBED AS: COM AT A PT ON THE NW ROW LINE OF N 2ND AVE 54.5 FT SWLY FROM E COR OF LOT 1 BLK 76 OF THE VILLAGE NOW CITY; TH NWLY & PAR WITH FLETCHER ST 106 FT; TH AT RT ANG SWLY 65.5 FT; TH AT RT ANG SELY 40 FT; TH AT RT ANG SWLY & PAR WITH 2ND AVE 207.54 FT; TH AT RT ANG SELY 66 FT TO THE NW ROW LINE OF N 2ND AVE; TH NELY ALONG SD ROW 273.04 FT TO THE POB BEING PART OF LOTS 1 & 2 BLK 76 OF THE VILLAGE NOW CITY.



Sketch by Apex Sketch

092-297-000-120-00

325 N SECOND AVE



Recorded Sept 6, 1995  
at 3:52 o'clock P. M. Liber 319 Page 519  
Kathy J. Matus Reg. of Deeds

LIBER 319 PAGE 519

004860

53 N. Second Ave.  
325 N. Second Ave.  
116 W. Fletcher St.  
**WARRANTY DEED FOR CORPORATION**

92-297-116 201  
92-297-120 201  
92-297-121 201

The Grantor, ALPENA FURNITURE COMPANY, a Michigan Corporation a/k/a Alpena Furniture Company, Inc., a Michigan Corporation, whose address is 325 North Second Avenue, Alpena, Michigan, 49707, conveys and warrants to Steven R. Straley and Shawn K. O'Donnell-Straley, husband and wife, whose address is 300 E. Blair Street, Alpena, Michigan, 49707 the following describe premises situated in the City of Alpena, County of Alpena and State of Michigan, and described as follows, to-wit:

Part of Lots 1, 2 and 3, Block 76 of the Original Plat of the village, now City of Alpena, a subdivision recorded in Liber 1 of Plats, page 2, Alpena County Records, described as follows: Commencing at the most Easterly corner of said Lot 1, the Point of Beginning; thence from the Point of Beginning Northwesterly along the Southwesterly right of way line of Fletcher Street 150 feet; thence Southwesterly and parallel with North Second Avenue 120 feet; thence Southeasterly and parallel with the Southwesterly right of way line of Fletcher Street 84 feet; thence Southwesterly and parallel with North Second Avenue 212.8 feet more or less to the channel bank of the Thunder Bay River; thence Southeasterly along said bank 66 feet to the Northwesterly right of way line of North Second Avenue; thence Northeasterly along the Northwesterly right of way line of North Second Avenue 332.8 feet to the point of beginning.

for the sum of THREE HUNDRED THIRTY THOUSAND AND 00/100-----  
-----(\$330,000.00)-----Dollars.

Subject to easements and building and use restrictions of record and further subject to a Mortgage of even date.

Dated this 5th day of September, 1995.

Signed and delivered in Presence of

David D. Werth  
Dennis J. Werner

ALPENA FURNITURE COMPANY

By: Dorothy K. LaFleche  
Dorothy K. LaFleche  
Its: President

By: George A. LaFleche  
George A. LaFleche  
Its: Secretary

STATE OF MICHIGAN)  
                                  ) ss.  
County of Alpena )

The foregoing instrument was acknowledged before me this 5th day of September, 1995, by Dorothy K. LaFleche and George A. LaFleche the President and Secretary of Alpena Furniture Company, a Michigan Corporation, on behalf of the corporation.

Paul H. Rooden

**Building Official's Determination:**

The proposed improvements will bring the unit up to current existing building codes for residential rental units. An inspection will be performed at the conclusion of the improvements. The owner of the building will be required to provide at least one parking space for the occupants that may have to be leased in the event there is not already dedicated parking at the building.

**RESOLUTION NO. 2015-12**  
**RESOLUTION GRANTING APPROVAL OF APPLICATION**  
**FOR NEIGHBORHOOD ENTERPRISE ZONE CERTIFICATE**  
**STEVE STRALEY, dba ALPENA FURNITURE**

**WHEREAS**, pursuant to Act 147, Public Acts of Michigan, 1992, this Municipal Council, by resolution adopted on October 6, 2003, established a Neighborhood Enterprise Zone, and

**WHEREAS**, on October 14, 2015, Steve Straley, dba Alpena Furniture filed an Application for a Neighborhood Enterprise Zone Certificate under Act 147, Public Acts of Michigan, 1992, with respect to rehabilitation of an existing structure located at 325 N. 2<sup>nd</sup> Avenue within the District on the land described on the legal description attached to the Application, and

**WHEREAS**, the City Assessor has determined that the property is eligible and has attached the legal description, lot dimensions and parcel identification number; verified proof of ownership and projected costs of rehabilitation, and prepared a statement showing the taxable value of the property in the tax year immediately preceding the start of your rehabilitation project, and has recommended that the application be approved, and

**WHEREAS**, the City Building Inspector has reviewed the application, project description and the detailed cost breakdown of the project, and determined that the proposed improvements will bring the unit up to current building codes for residential rental units, and

**WHEREAS**, this Municipal Council finds and determines that the Application complies with the Neighborhood Enterprise Zone Act, Act 147 of 1992,

**NOW, THEREFORE, BE IT RESOLVED**, that the Application by Steve Straley, dba Alpena Furniture, for rehabilitation of the property within the Neighborhood Enterprise Zone and on the land described in the Application for a period of twelve years is approved and that the City Clerk shall forthwith complete the Application and forward the original of the Application together with the required attachments to the State Tax Commission.

Councilmember \_\_\_\_\_ moved adoption of the above resolution and it was seconded by Councilmember \_\_\_\_\_.

Ayes:

Nays:

Absent:

Resolution Declared Adopted.

I, Karen Hebert, City Clerk of the City of Alpena, **DO HEREBY CERTIFY**: that the above is a true and complete copy adopted by the Municipal Council at a Regular Meeting held December 7, 2015.

---

Karen Hebert

Alpena City Clerk

Dated: \_\_\_\_\_, 2015



### Funding a new four-year university:

Michigan currently spends about \$1.5 billion annually to support the operations of our 15 state universities. Base funding ranges from about \$13 million for Lake Superior State University to nearly \$300 million for the University of Michigan- Ann Arbor.

Resources could be made available from state, federal, local governments, industry, philanthropists, and philanthropic organizations to provide the funding necessary toward establishing a baccalaureate-granting state university in the Alpena region without raising taxes.

Alpena Community College, with its existing facilities and land holdings, could reduce the initial cost of establishment. ACC's satellite facility in Oscoda (Iosco County) and Gaylord's University Center (Otsego County) present additional opportunities for educational outreach accompanied by resource stewardship.

### Moving forward:

FOUR-WARD NORTHEAST MICHIGAN seeks to form a coalition of stakeholders and interested citizens to be that unrelenting voice and regional force needed to fulfill the unmet higher educational needs of Michigan's northern Lower Peninsula.

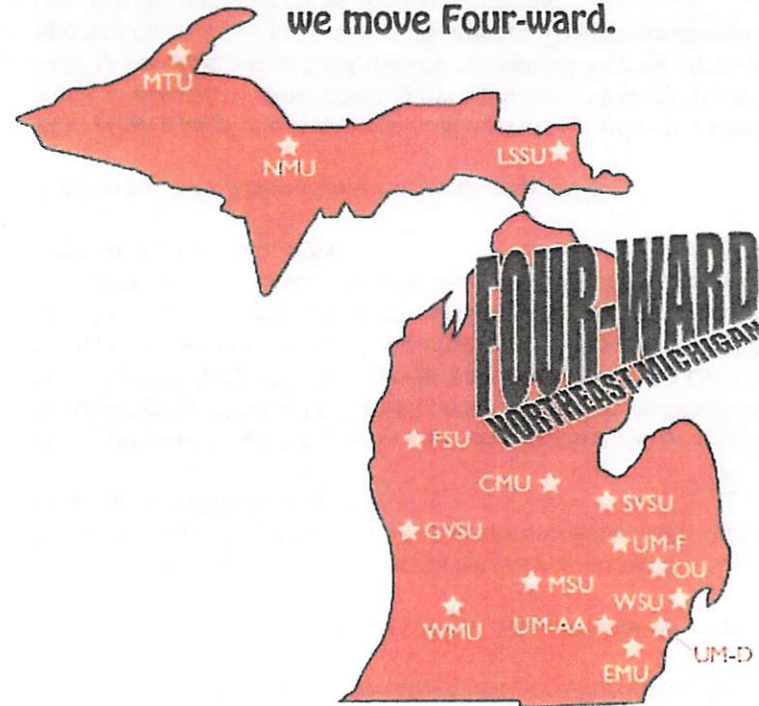
FOUR-WARD NORTHEAST MICHIGAN invites those that share the same concern and vision to support us in our effort.

### Lake Huron State University?

### University of Northeast Michigan?

### Thunder Bay State University?

What's in a name, as long as we move Four-ward.



**FOUR-WARD**  
NORTHEAST MICHIGAN



For more information, contact:

Joe Lukasiewicz

Email: joluka71@gmail.com

**A Four-Year University  
means**

**Higher Education**

**Higher Employment**

**Higher Wages**

**Higher Quality of Life**

## The Need

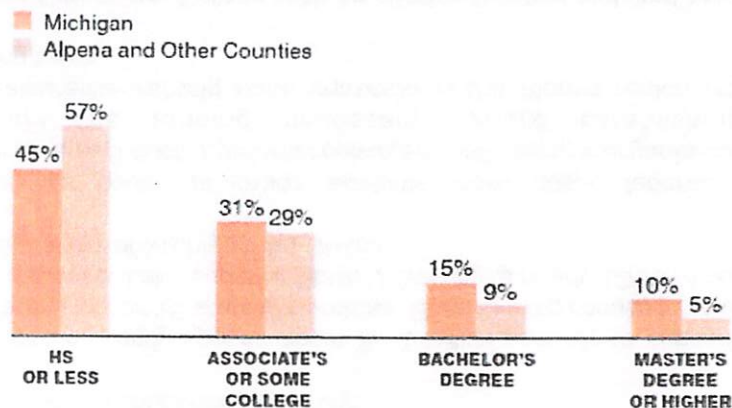
Educational and economic opportunities in Northeast Michigan are limited. With no public four-year university in the northern half of the Lower Peninsula, students must leave the area for access to higher education. Once our children leave, they seldom return to live. In effect, there is a "brain drain" that adversely affects our local economy.

Northern Michigan's economy is not well diversified and relies heavily on seasonal tourism. The area's unemployment rate is persistently high. The median income of the area is significantly less than the state average.

An analysis of Alpena and the surrounding counties undertaken by the Institute for Higher Education Policy, funded by the Kellogg Foundation, revealed some of the challenges faced by Northeast Michigan. Only 26 percent of the 18 to 24 year-olds in the region are enrolled in college or graduate school, substantially lower than the statewide rate of 39 percent.

Further, low-income residents ages 18 to 24 have significantly lower college enrollment rates (seven percent) than those of low-income residents at the state level. Although access to college is difficult for low-income residents throughout the state, it is especially difficult in the Alpena region. As a result, the region lacks a base of highly skilled workers, essential for promoting economic growth.

### Distribution of Highest Educational Attainment for Residents of Michigan and of Alpena and Surrounding Counties Age 25 and Older, 2005



SOURCE: U.S. CENSUS BUREAU, 2005 AMERICAN COMMUNITY SURVEY

## The Solution

Legislation to establish a baccalaureate-granting university for Northeast Michigan, aside from meeting the current unmet higher educational needs of the region, will result in: economic benefits of a better educated workforce; generate direct investment and jobs from construction; reverse the trend of depopulation by keeping local students from leaving the area to obtain an undergraduate degree; and enhance local business and services spending through an influx of resident students and associated visitors.

On average, Michigan residents with a bachelor's degree earn nearly twice as much as those with just a high school diploma and have a significantly lower rate of unemployment - one-third the rate!

### Lake Superior State University (LSSU) as an economic model:

LSSU serves as an economic model for what a four-year university will do for Northeast Michigan. It is Michigan's smallest state university with approximately 2800 students.

LSSU generates \$113 million per year in regional economic activity, accounting for almost 1400 jobs or 9% of the jobs in Chippewa County. Each new student at LSSU brings economic spending that equates to about one new job for every two students. Using LSSU as the model, a 5000 student university in Northeast Michigan would create about 2500 new jobs and generate roughly one quarter billion dollars in annual regional economic activity.

### Partnering with Alpena Community College (ACC):

ACC plays a vital role in the regional economy, and is the first choice of many in pursuit of affordable higher education. With its 1600 students, ACC generates about \$88 million in regional income through general operations and student productivity effects. This amounts to about 6% of the Alpena region's annual economic activity.

FOUR-WARD NORTHEAST MICHIGAN sees ACC, as a partner in expanding higher education opportunities. A local baccalaureate-granting university in synergy with ACC would be mutually beneficial while providing immeasurable benefit to the region and its citizens.



**RESOLUTION NO. 2015-14**

**RESOLUTION OF SUPPORT FOR A PUBLIC FOUR YEAR UNIVERSITY IN NORTHEAST MICHIGAN**

**WHEREAS**, there is no public four year university in the northern half of the Lower Peninsula;

**WHEREAS**, students must leave the area for access to higher education and seldom return to live;

**WHEREAS**, there is a "brain drain" that adversely affects our local economy due to limited educational and economic opportunities in Northeast Michigan;

**WHEREAS**, the area's unemployment rate is persistently higher, and the median income of the area is significantly less than the state average;

**WHEREAS**, a study by Lake Superior State University found that one new job is created for every two students enrolled;

**WHEREAS**, on average, Michigan residents with a bachelor's degree earn nearly twice as much as those with only a high school diploma and have one third the rate of unemployment;

**WHEREAS**, only 26 percent of the 18 to 24 year-olds in the region are enrolled in college, substantially lower than the statewide rate of 39 percent;

**WHEREAS**, there is adequate land in the public trust in the Alpena region which is suitable to support the development of a baccalaureate-granting university;

**NOW, THEREFOR BE IT RESOLVED**, that the City of Alpena support the Michigan Legislature in establishing within Alpena County, a baccalaureate-granting state university for Northeast Michigan.

Councilmember \_\_\_\_\_ moved to adopt the above resolution, seconded by Councilmember \_\_\_\_\_.

Ayes:

Nays:

Absent:

Resolution declared adopted.

I, Karen Hebert, City Clerk of the City of Alpena, **DO HEREBY CERTIFY** that the above is a true copy of a resolution adopted by the Municipal Council at a regular meeting held November 16, 2015.

Karen Hebert  
City Clerk