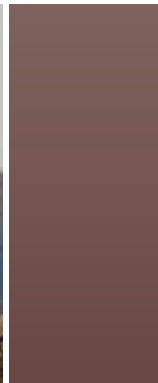


Piatt County Comprehensive Plan



2
0
1
0



VOLUME ONE

Created for the Piatt County Board
in collaboration with the Piatt County
Regional Planning Commission

CHAMPAIGN COUNTY
rpc
REGIONAL
PLANNING
COMMISSION

ACKNOWLEDGEMENTS

Piatt County Regional Planning Commission Members

Dale Allen, Goose Creek Township
Ron Davis, Monticello Township
Paul Doane, Sangamon Township
Michelle Gross, Bement Township
Roger Hendrix, Bement Township
Randy Keith, Sangamon Township
John Lyons, Unity Township
Sandy Manuel, Blue Ridge Township

John McRae, Cerro Gordo Township
Ron Price, Cerro Gordo Township
Paul Quick, Unity Township
Jim Reed, Goose Creek Township
JoAnn Shafer, Willow Branch Township
Dave Sherman, Blue Ridge Township
Dave Thompson, Willow Branch Township
Dick Wilkin, Monticello Township

Ex-officio Members

Trish Gale
Nancy King
Jonathon Manuel
Jerry Schauf

County Board Members

Jerry Brazelton
Thomas Dobson
John Lyons
Sharon Lee Martin
Max Olson
Michael Wileaver
Dick Wilkin

Piatt County Staff

Trish Gale, Zoning Officer
Pat Rhoades, County Clerk

Planning Consultants: Champaign County Regional Planning Commission

Susan Chavarria, Project Manager
Andrew Levy, Project Planner
Randy Rice, Planning Intern

TABLE OF CONTENTS

Introduction

Plan Purpose	I-1
The Planning Process	I-1
Existing Conditions and Trends Analysis	I-1
Vision, Goals and Objectives	I-2
Future Conditions	I-2
Implementation Plan	I-2
Existing Plans and Policies	I-5
Relation to Current Planning Process.....	I-7

Chapter 1-History and Regional Context

Introduction	1-1
History	1-1
Regional Context	1-2
Townships	1-5
Municipalities	1-7

Chapter 2- Population and Demographics

Introduction	2-1
Population Change	2-1
Rural-Urban Split	2-2
Rural Populations	2-3
Migration	2-4
Age	2-5
Race	2-5
Educational Attainment	2-6
Income	2-7
Poverty	2-9
Density	2-9
Households and Families	2-12
Home Ownership	2-13
Future Projections for County, Townships, and Municipalities.....	2-14
Key Findings	2-15

Chapter 3- Economy and Employment

Introduction	3-1
Labor Force	3-1
Employment Sectors	3-3
Agricultural Economy	3-6
Private Sector Economy	3-11
Future Economy	3-12
Key Findings	3-13
Plans for the Economy	3-14
Issues	3-14
Best Management Practices	3-14
Goals and Objectives	3-15
Future Conditions	3-16

Chapter 4- Community Facilities

Introduction	4-1
Schools	4-1
School Districts	4-3
Fire Districts	4-3
ISO Rating	4-5
Police	4-5
Emergency Medical/Ambulatory Services	4-5
Hospitals and Healthcare Centers	4-6
Senior Living Centers	4-6
Social Services	4-7
Plans for Public Services	4-8
Issues	4-8
Goals and Objectives	4-8
Future Conditions	4-9

Chapter 5- Utilities

Public Sanitary Sewer	5-1
Onsite Wastewater Disposal Systems	5-1
County Regulations of Onsite Wastewater Disposal Systems	5-3
Public Water Service	5-3
Private Onsite Wells	5-3
Energy Resources	5-5
Renewable Energy Sources	5-7
Plans for Infrastructure	5-10
Issues	5-10
Best Management Practices	5-10
Goals and Objectives	5-11
Future Conditions	5-12

Chapter 6- Housing

Introduction	6-1
Housing Units	6-1
Tenure	6-2
Vacancy Status	6-2
Size	6-3
Age	6-3
Value	6-4
Affordability	6-6
Supply	6-6
Key Findings	6-7
Plans for Housing	6-8
Projections	6-8
Issues in Housing	6-9
Best Management Practices	6-10
Goals and Objectives	6-10
Future Conditions	6-11

Chapter 7- Historic and Cultural Resources

Introduction 7-1
Historic Sites 7-1
Archaeological Resources 7-3
Regional Attractions 7-4
Libraries..... 7-6
Plans for Historic and Cultural Resources 7-7
Issues 7-7
Best Management Practices 7-7
Goals and Objectives 7-8
Future Conditions 7-8

Chapter 8- Transportation

Introduction 8-1
Roads 8-1
Interstates 8-1
Federal, State, and County Highways 8-1
Township Roads 8-2
Functional Classification 8-2
Maintenance Jurisdiction 8-4
Traffic Volumes 8-4
Commuting to Work 8-6
Rail 8-9
Air 8-12
Pedestrian and Bicycle Facilities 8-12
Plans for Transportation 8-13
Issues 8-13
Best Management Practices 8-13
Goals and Objectives 8-14
Future Conditions 8-15

Chapter 9- Land Use

Introduction 9-1
Existing Land Use..... 9-1
Agricultural 9-3
Residential 9-4
Commercial 9-6
Industrial and Utility 9-6
Open Space 9-7
Municipal Land Use 9-7
Settlements 9-15
County Zoning 9-15
Land Market Values 9-17
Land Use Trends..... 9-17
Key Findings 9-18
Plans for Land Use and Land Capacity 9-19
Population Projections 9-19

Chapter 9- Land Use - continued

Issues 9-20
Best Management Practices 9-20
Goals and Objectives 9-21
Growth Assumptions 9-22
Future Land Use Recommendations 9-22
Land Use Projections 9-23
Mapping Criteria 9-23
Future Land Use Descriptions 9-24
Residential Land Uses 9-24
Commercial / Industrial 9-30
Institutional 9-31
Agricultural 9-31
Transportation 9-31

Chapter 10- Natural Resources

Introduction 10-1
Physical Geography 10-2
Topography 10-3
Water Resources..... 10-4
Drainage Districts 10-10
Flood Plains 10-11
Wetlands 10-11
Soil Resources 10-13
Minerals 10-16
Land Cover 10-16
Forests..... 10-17
Wildlife/Habitats..... 10-19
Land and Water Reserves 10-19
Climate 10-21
Key Findings 10-23
Plans for Natural Resources 10-24
Issues 10-24
Best Management Practices 10-25
Goals and Objectives 10-26
Future Conditions 10-27

Chapter 11- Nature Preserves, Parks, & Recreation

Introduction 11-1
Nature Preserves, Parks and Recreation 11-1
Key Findings 11-3
Plans for Parks, Preserves and Recreation..... 11-4
Issues 11-4
Best Management Practices 11-4
Goals and Objectives 11-5
Future Conditions 11-6

Chapter 12- Implementation

Introduction	12-1
Administrative.....	12-2
Land Use and Development.....	12-3
Housing.....	12-5
Economy	12-6
Public Facilities and Infrastructure	12-8
Public Services.....	12-11
Transportation.....	12-12
Nature Preserves, Parks and Recreation	12-13
Natural Resources	12-15
Historic and Cultural Resources	12-17
Long Term Projects identified in the Comprehensive Plan.....	12-18
Potential Funding Sources	12-20
Topics for Further Consideration	12-25
Monitoring the Plan	12-26
Successful Plan Implementation	12-27

APPENDICES (*VOLUME ONE*)

- 1 Population and Employment Projections
- 2 Public Involvement Efforts
- 3 Piatt County Phone Survey Results
- 4 Resolutions

APPENDICES (*VOLUME TWO*)

- 1 Public Comments

TABLES AND MAPS

Chapter 1

Map 1-1	Regional Context
Table 1-1	Piatt County Townships
Map 1-2	Townships and Municipalities

Chapter 2

Table 2-1	County Population, 1900-2007
Table 2-2	Municipal Populations in Piatt County, 1990-2007
Table 2-3	Urban and Rural Populations by Township, 2000
Table 2-4	Township Population, 1990- 2000
Table 2-5	Components of Population Change for the County, 1990-2005
Chart 2-1	Population Pyramid, 1960 & 2000
Table 2-6	Race and Ethnicity by Township, 2000
Table 2-7	County Educational Attainment, 2000
Table 2-8	Township Income Characteristics, 1989-1999
Table 2-9	Incorporated Area Income Characteristics, 1989-1999
Chart 2-2	Income Levels by Household Type, 2000
Table 2-10	Poverty Determination, 2000
Table 2-11	Population and Housing Density by Township, 2000
Table 2-12	Population and Housing Density by Municipality, 2000
Table 2-13	Population by Density Comparisons, 2000
Map 2-1	Population Density
Table 2-14	Size of Residential Units, 1990-2000
Table 2-15	Number of Households, 1990-2000
Table 2-16	Number of Households by Age of Householder, 1990-2000
Table 2-17	Number of Households by Size and Type, 1990-2000
Table 2-18	Piatt County Population Projections 2005-2030
Table 2-19	Piatt County Townships Population Projections, 2005-2030
Table 2-20	Piatt County Municipalities Population Projections, 2005-2030

Chapter 3

Table 3-1	Piatt County Labor Force, 1977-2007
Table 3-2	Regional Labor Force Comparison, 1997-2007
Table 3-3	Journey to Work for Piatt County Employees, 1989-1999
Table 3-4	Journey to Work for Piatt County Residents, 1989-1999
Table 3-5	Piatt County Employment by Sector, 2001- 2006
Table 3-6	Piatt County Wages by Sector (in thousands of dollars), 2001-2006
Chart 3-1	Agricultural Cash Receipts 1969-2006
Chart 3-2	Total Net Farm Income, 1969-2006
Table 3-7	Number of Farms by Acreage, 1997-2002
Table 3-8	Number of Farms by Tenure, 1997-2002
Table 3-9	Market Value of Land, Buildings, and Product Sold, 1997-2002
Table 3-10	Acreage Harvested, Yield and Production of Crops, 2003-2007
Table 3-11	Livestock Inventory, 1997-2002
Table 3-12	Number of Farms by Type of Farm, 1997-2002
Table 3-13	Private Sector Number of Establishments, Sales and Payroll, 1997-2002
Table 3-14	Employment Sector Projections, 2005-2030

Chapter 4

Table 4-1	Schools Serving Piatt County
Table 4-2	Piatt County School Districts
Map 4-1	Fire Protection Service
Table 4-3	Fire Protection Districts and ISO ratings

Chapter 5

Table 5-1	Availability of Public Sanitary Sewer
Map 5-1	Areas of 'Very High' or 'High' Potential for Septic Tank Absorption Fields
Table 5-2	Availability of Public Water
Figure 5-1	Ameren Service Area
Figure 5-2	Rural Electric Cooperatives
Map 5-3	Utility Transmission and Distribution
Map 5-4	Wind Resource Potential

Chapter 6

Table 6-1	Number of Housing Units by Municipality and Township, 1980-2000
Table 6-2	County Housing Tenure, 1980-2000
Table 6-3	County Occupancy and Vacancy Status, 1990-2000
Table 6-4	Housing Stock by Type
Chart 6-1	Age of Residences
Table 6-5	Owner Occupied Home Value
Table 6-6	Owner Occupied Home Value Comparison, 2000
Table 6-7	Change in Rent
Table 6-8	Rental Cost Comparison, 2000
Table 6-9	Housing Costs as a percent of Household Income, 1999
Table 6-10	Residential Building Permits by Township, 1997-2007

Chapter 7

Table 7-1	Piatt County Libraries
-----------------	------------------------

Chapter 8

Table 8-1	Functional Classification of Roads
Map 8-1	Roadway Functional Class
Table 8-2	Roadway Maintenance Jurisdictions in Piatt County
Table 8-3	Piatt County Roads with ADT Greater Than 10,000
Map 8-2	Average Daily Traffic
Table 8-4	Commuter Travel Modes for Piatt County
Table 8-5	Commuter Travel Time
Map 8-3	Residents Place of Work-1999
Map 8-4	Railroad Crossings
Map 8-5	Trains per Day

Chapter 9

Table 9-1	Land Use Types
Map 9-1	Existing Land Use
Map 9-2	New Residences 1999 to 2006 by PLSS Section
Map 9-3	Atwood Existing Land Use
Map 9-4	Bement Existing Land Use
Map 9-5	Cerro Gordo Existing Land Use
Map 9-6	Cisco Existing Land Use
Map 9-7	Deland Existing Land Use
Map 9-8	Hammond Existing Land Use
Map 9-9	Mansfield Existing Land Use
Table 9-2	Piatt County Zoning Districts
Map 9-10	Unofficial Zoning Map
Table 9-3	Total EAV (Thousands of \$)
Table 9-4	Piatt County Land Use
Table 9-5	Land Use Projections
Table 9-6	Components of Suitability Maps
Map 9-11	Low Density Residential Suitability
Map 9-12	Commercial Industrial Suitability
Map 9-13	Agricultural Suitability
Map 9-14	Future Land Use Map – Public Input Priority

Chapter 10

Map 10-1	Slope of the Land
Map 10-2	Elevation
Figure 10-1	Hydrologic Cycle
Map 10-3	Sand and Gravel Aquifers
Figure 10-2	Approximated Surface of Groundwater under Natural Pressure Conditions
Map 10-4	Water Wells
Map 10-5	Watershed and Surface Water
Map 10-6	Surface Water Quality
Map 10-7	Drainage Districts
Map 10-8	Wetlands and Floodplains
Map 10-9	Prime Farmland
Map 10-10	Soil Groupings
Map 10-11	Presettlement Land Cover
Map 10-12	Land Cover
Map 10-13	Forest Comparison
Table 10-1	Threatened and Endangered Species in Piatt County, 2008
Chart 10-1	Monthly Temperatures 1971-2000
Chart 10-2	Monthly Precipitation
Chart 10-3	Monthly Snowfall
Chart 10-4	Growing Degree Days

Chapter 11

Table 11-1	Piatt County Parks
Map 11-1	County and Municipal Parks