

4 PARK INVENTORY AND TRAIL “GAP” ANALYSIS

In producing a comprehensive existing conditions analysis, existing park and trail facilities were inventoried in all Urbana Park District parks (see Table 13). These included:

- Benches
- Bike Parking Locations
- Drinking Fountains
- Lighting
- Maps
- Mile Markers
- Trail Signs
- Waste Receptacles

Waste receptacles and benches were the most common park facilities, found at 19 and 18 park locations respectively. Additionally, lighting (283) and benches (129) were the most abundant per individual unit.

To accompany these facilities, park acreage, location, type, and unique amenities were also inventoried and listed.

Type	Park Name	Acres	Benches	Bike Racks	Drinking Fountain	Lighting	Map	Mile Marker	Trail Sign	Waste Receptacles
Signature	Crystal Lake	144	19	4	3	95	1	0	15	32
	Meadowbrook	130	33	3	2	28	5	18	19	5
	Perkins Road / Judge Webber	84	11	0	1	0	0	0	4	3
	Weaver	60	2	1	0	0	0	0	3	0
Community	AMBUCS	22	1	0	3	9	0	0	3	9
	Prairie	20	0	0	1	22	0	0	0	7
	Brookens Sports Complex	11	0	3	0	20	0	0	0	3
	Canaday	3	0	0	0	8	0	0	0	4
Neighborhood	Lohmann	15	4	0	0	0	0	0	1	2
	Chief Shemauger	13	2	2	0	6	0	0	1	2
	Blair	11	18	2	2	22	0	0	0	8
	Carle	11	11	1	1	32	2	0	2	2
	South Ridge	11	7	0	0	0	0	0	5	2
	King	8	8	0	1	12	0	0	2	2
	Crestview	6	6	0	1	3	0	0	3	2
	Larson (formerly Wheatfield)	5	2	1	1	0	0	0	0	3
	Victory	5	9	1	1	4	0	0	1	5
Special Use Facilities	Hickory Street Site	10	0	0	0	0	0	0	0	0
	Leal	3	3	0	0	7	0	0	0	1
	Phillips Recreation Center	2	4	2	1	15	0	0	0	2
	Hagan Site	1	0	0	0	0	0	0	0	0
	Sunnycrest Tot Lot	1	0	0	0	0	0	0	0	1
	Patterson Parklet	<0.5	2	0	0	0	0	0	0	0
Natural Area	Binkerd's Grove	4	0	0	0	0	0	0	0	0
	TOTAL UNITS	580.5	142	19	17	283	8	18	59	95
	Total Park Locations	24	17	9	11	14	3	1	12	19

Table 13 Urbana Park District trail facilities by park. Inventoried Summer 2013, Updated 2015.

Gaps in the trail network were assessed at the individual park level based upon both walking and biking distance (assumed to be a quarter- and half-mile respectively) to other UPD facilities (see Figure 12).³

From there, opportunities and constraints for each mode were identified and elaborated upon relative to potential for future enhancement of local and regional trail networks.

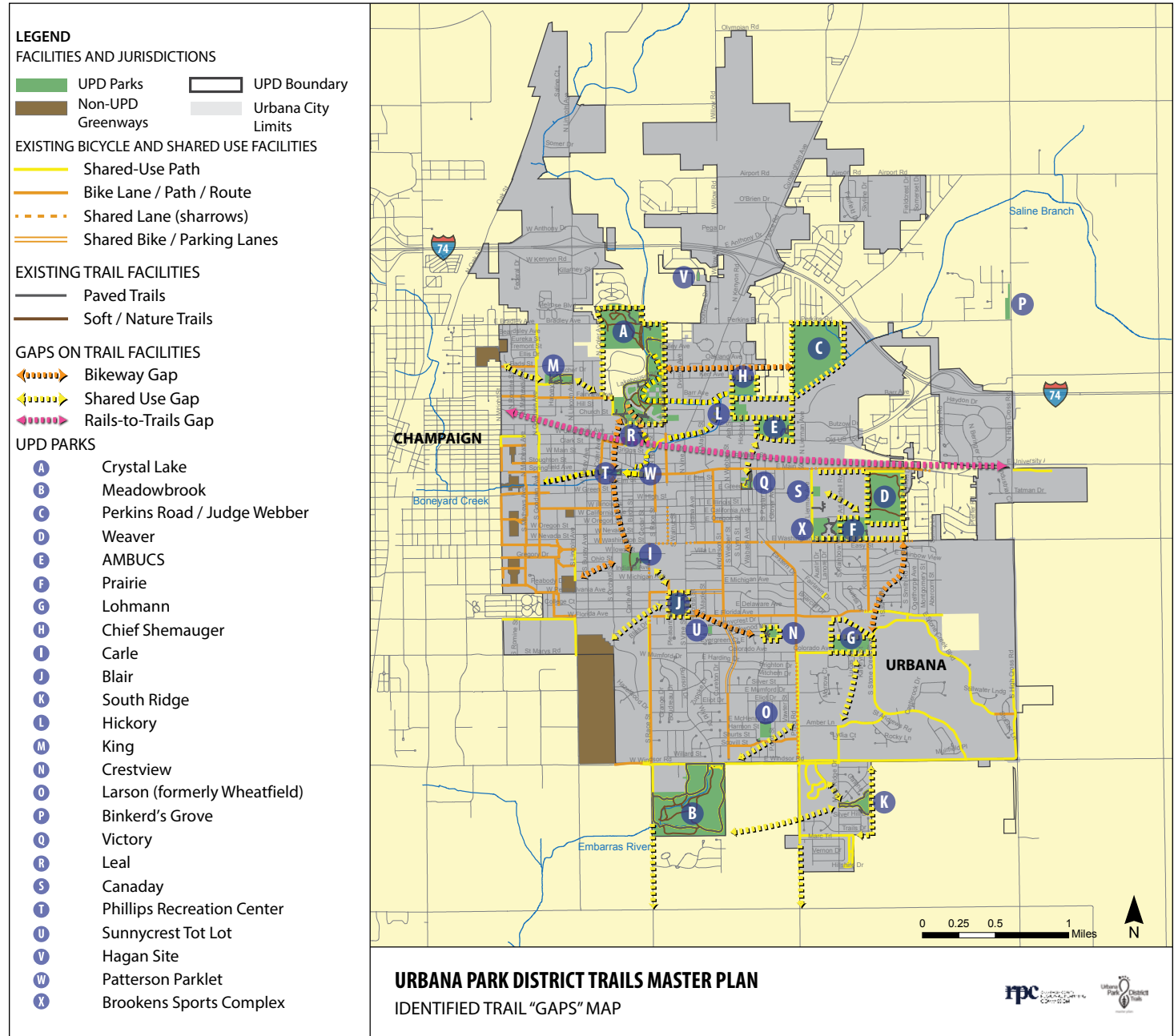
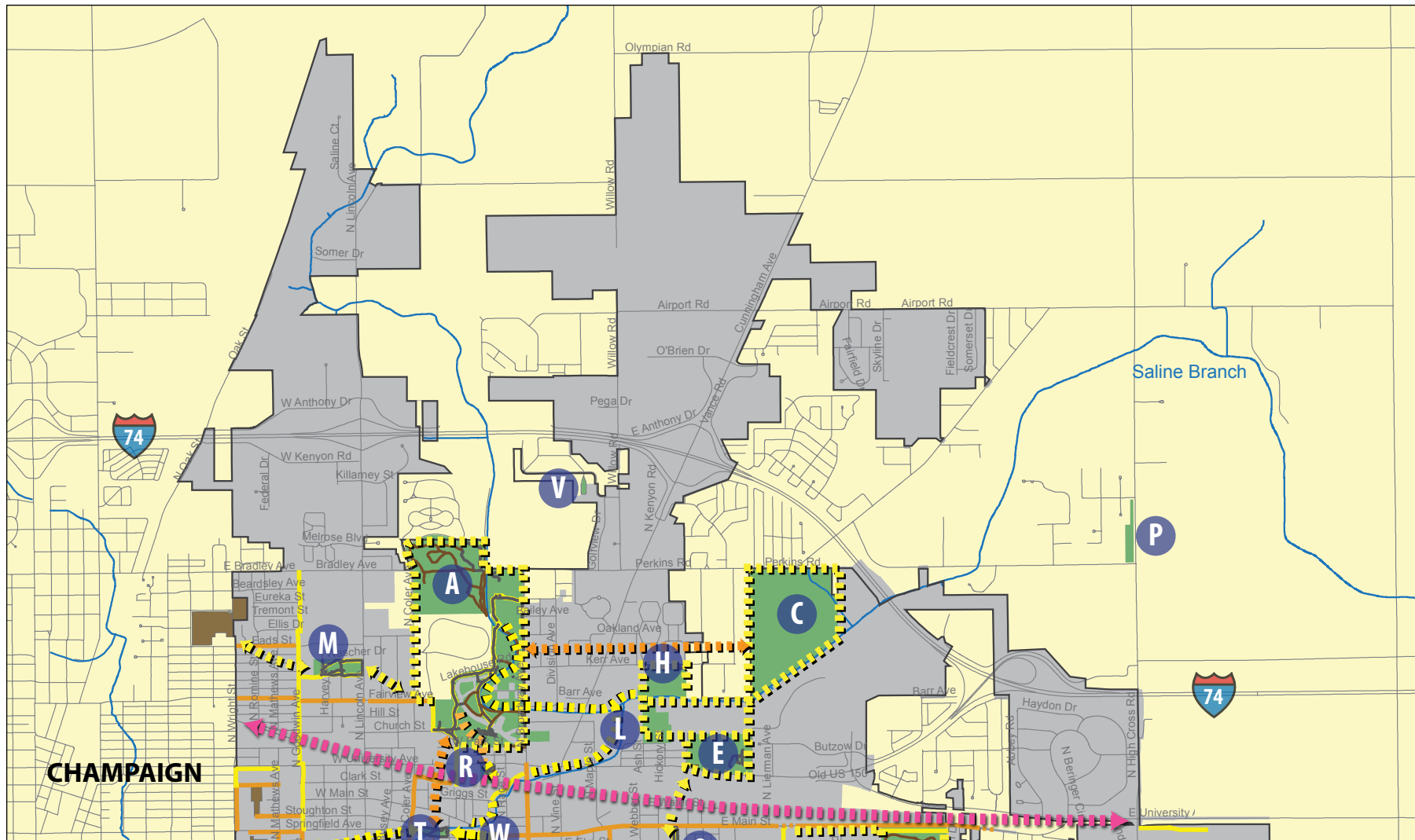


Figure 12 A map depicting identified trail gaps in the Urbana Park District.

³ Active Choices: Champaign County Greenways & Trails Plan Needs Assessment. December, 2012. Page 14. Champaign County Regional Planning Commission.



LEGEND		UPD PARKS			
GAPS ON TRAIL FACILITIES					
	Bikeway Gap	A	Crystal Lake	I	Carle
	Shared Use Gap	B	Meadowbrook	J	Blair
	Rails-to-Trails Gap	C	Perkins Road / Judge Webber	K	South Ridge
		D	Weaver	L	Hickory
		E	AMBUCS	M	King
		F	Prairie	N	Crestview
		G	Lohmann	O	Larson*
		H	Chief Shemauger	P	Binker's Grove
				Q	Victory
					*former ly Wheatfield
FACILITIES AND JURISDICTIONS					
	UPD Parks	R	Leal	S	Canaday
	Non-UPD Greenways	T	Phillips Recreation Center	U	Sunnycrest Tot Lot
	Paved Trails	V	Hagan Site	W	Patterson Parklet
	Soft / Nature Trails	X	Brokens Sports Complex		
EXISTING BICYCLE AND SHARED USE FACILITIES					
	Shared-Use Path				
	Bike Lane / Path / Route				
	Shared Lane (sharrows)				
	Shared Bike / Parking Lanes				

Figure 13 Identified trail gaps in North Urbana



28 URBANA PARK DISTRICT TRAILS MASTER PLAN

4.1 CRYSTAL LAKE PARK

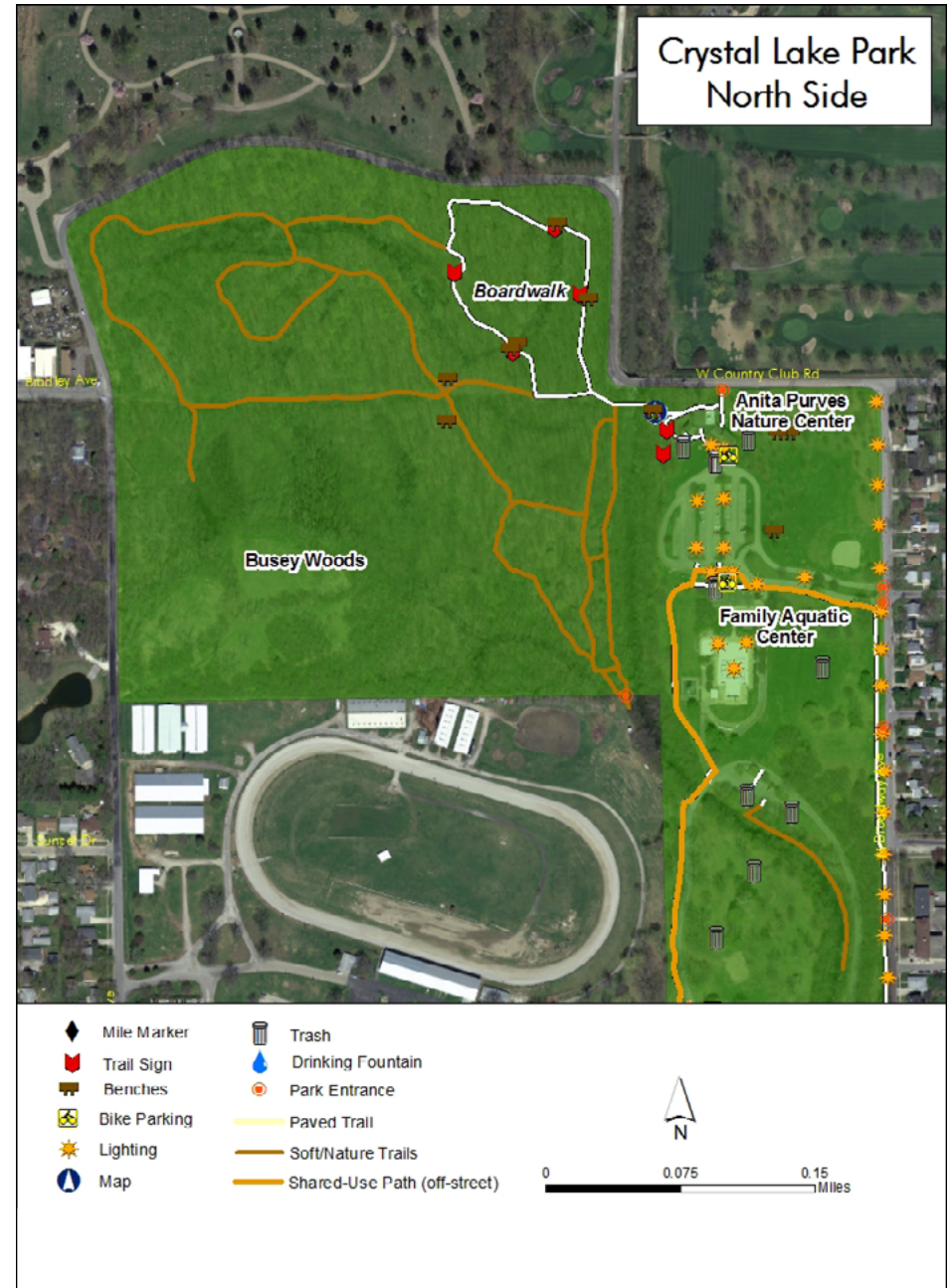
Area	Location	Type
144 acres	Park Street and Broadway Avenue	Signature

KEY ELEMENTS

• Benches (19)	• Lighting (95)	• Paved Trails (3.12 miles)
• Bike Parking	• Map (1)	• Soft Trails (2.11 miles)
• Locations (4)	• Trail Signs (15)	
• Drinking Fountains (3)	• Trash Cans (32)	

AMENITIES

• Crystal Lake	• Crystal Lake Family Aquatic Center	• Parking
• Busey Woods (59 acres)	• Recreational Facilities	• Restrooms
• Anita Purves Nature Center	• Open Space	• Playgrounds
		• Pavilion





OPPORTUNITIES

Proximity to Neighborhoods, Parks, and Destinations: Crystal Lake Park is accessible to many nearby residential neighborhoods, with King Park located within walking distance from the park's western edge. Likewise, bicycle path opportunities to the south and east can benefit cyclists traveling from slightly further distances such as downtown Urbana and eastern neighborhoods.

Greenway Opportunities: Trail development along the Saline Branch would connect Crystal Lake Park with Chief Shemauger Park and the Hickory Street Site and ultimately Perkins Road / Judge Webber Park. This will provide a paved, off-road path leading from a river walk at Crystal Lake to other parks and areas of northeastern Urbana. This path also poses a connection with greenway development and adjacent areas along the Boneyard Creek.

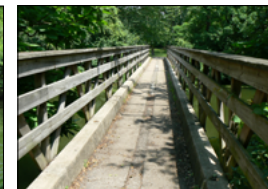
Rail Trail Opportunity: The Norfolk Southern rail line has the potential to be both a local and regional amenity, bringing visitors from further away to Crystal Lake Park while offering a connection to Leal Park as well as other Urbana Park District areas situated along the Boneyard Creek including Phillips Recreation Center, Patterson Parklet, and Chief Shemauger Park.

Loop Trail Opportunity: The park road looping around Crystal Lake Park could be converted to one way vehicle traffic entering at Park Street, proceeding from south to north, and exiting at Broadway Avenue. The inside land could be converted to bicycle and pedestrian use. The road path system would tie into proposed sidepaths on Broadway Avenue and Park Street to create a large loop path system.

CONSTRAINTS

Crossing University Avenue and Cunningham Avenue: Crystal Lake Park is close to Cunningham Avenue (US 45) to the east and University Avenue (US 45/150) to the south, presenting difficult crossings to and from the park for visitors. All options for a safe crossing should be considered to ensure an adequate connection for pedestrians and cyclists to this area.

Limited Northern Access: Lack of sidewalks, bikeways, and trails, as well as the Urbana Country Club prevent access to Crystal Lake Park from neighborhoods north and northeast of the park.



Left: Wildlife and habitat near Crystal Lake.

Right: Pedestrian bridge crossing Crystal Lake.

4.2 MEADOWBROOK PARK

Area	Location	Type
130 acres	Windsor Road and Race Street	Signature

KEY ELEMENTS

- | | | |
|------------------------------|---------------------|-----------------------------|
| • Benches (33) | • Lighting (28) | • Trash Cans (5) |
| • Bike Parking Locations (3) | • Map (5) | • Paved Trails (2.22 miles) |
| • Drinking Fountains (2) | • Mile Markers (18) | • Soft Trails (1.74 miles) |
| | • Trail Signs (19) | |

AMENITIES

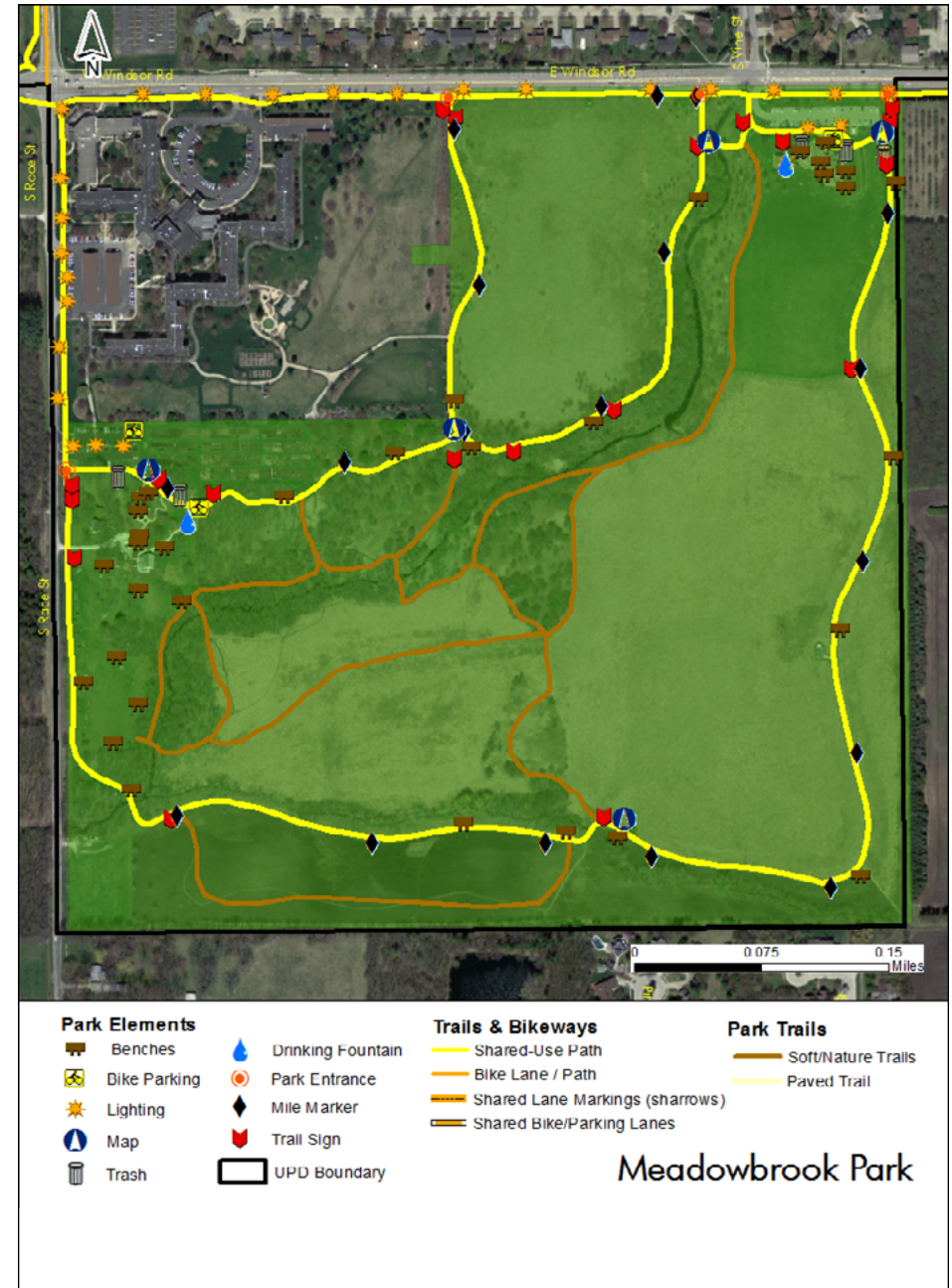
- | | | |
|-----------------|---------------|--------------------|
| • Gardens | • Parking | • Restrooms |
| • Open Space | • Pavilions | • Sculptures / Art |
| • Natural Areas | • Playgrounds | |

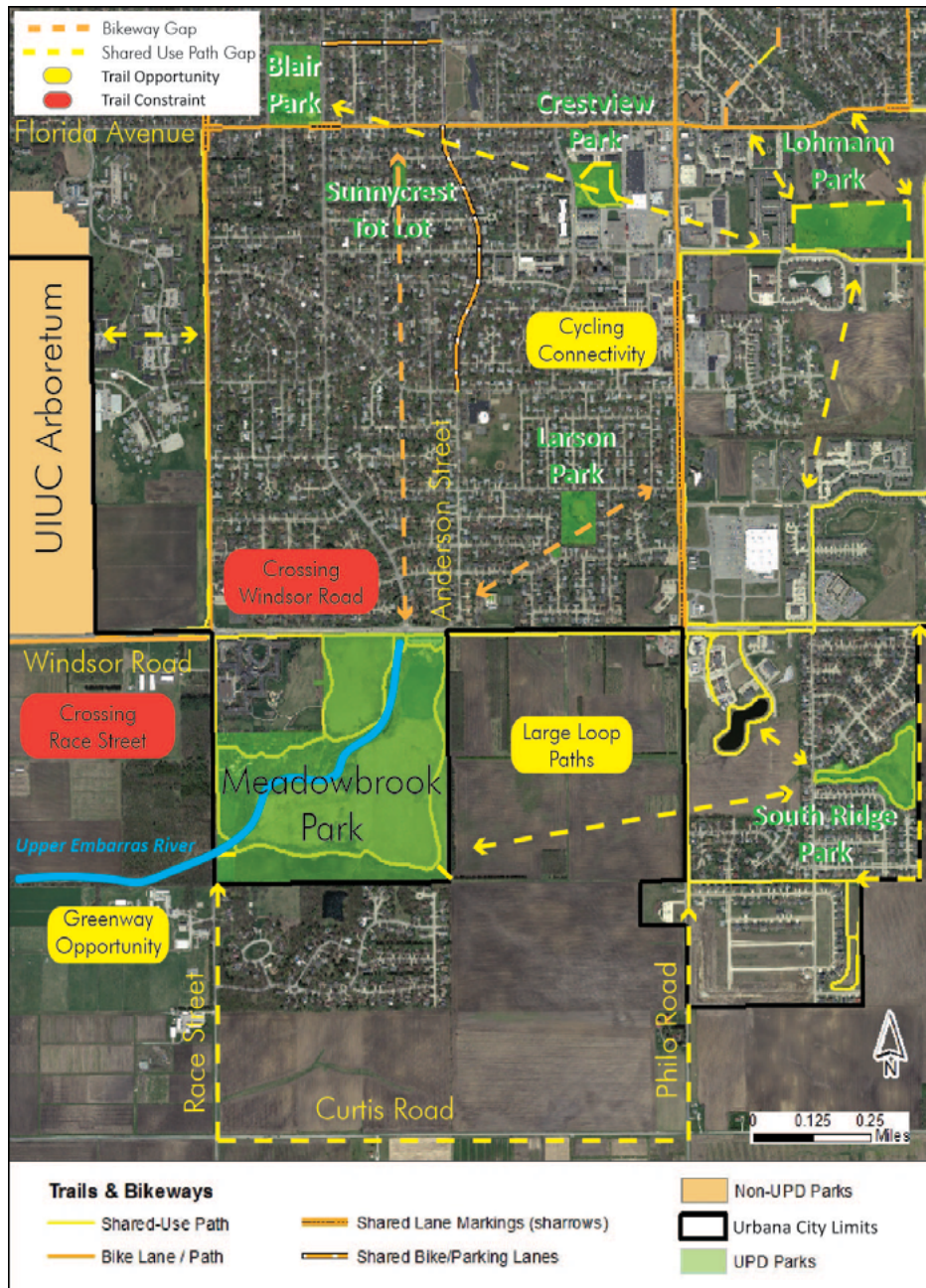


Paved trail with bicycle parking near Meadowbrook Park's western entrance.



Upper Embarras River on the north side of Meadowbrook Park.





OPPORTUNITIES

Cycling Connectivity: Meadowbrook Park is located within cycling distance from many parks (including Blair, Sunnycrest, Crestview, Lohmann, Larson, and South Ridge) and residential neighborhoods to the north and east. Likewise, existing bike infrastructure along Race Street, Anderson Street, Philo Road, and Windsor Road offers substantial opportunities for connecting park facilities.

Greenway Opportunity: Trail and natural area development along the Upper Embarras River downstream of Meadowbrook Park would provide a regional connection between Meadowbrook Park and residential areas in Savoy, as well as the University of Illinois South Research Park and Mattis Park area of southern Champaign.

Large Loop Paths: Abundant open space to the south and east of Meadowbrook Park provides opportunities for the creation of loop trails between South Ridge Park as well as to the south of Meadowbrook Park on Race Street, Curtis Road and Philo Road. These trails would offer visitors a larger variety of destination options and trail links throughout southern Urbana.

CONSTRAINTS

Crossing Race Street and Windsor Road: Meadowbrook Park is bordered to the west by Race Street and to the north by Windsor Road, presenting difficult crossing areas for visitors on foot and bike. Options for safe crossings should be considered to ensure adequate connections for pedestrians and cyclists to this area.



Soft trail in the southeast corner of Meadowbrook Park leading away from the Prairie Path; potential trail connection to South Ridge Park.

4.3 PERKINS ROAD / JUDGE WEBBER PARK

Area	Location	Type
84 acres	Perkins Road and Eastern Avenue	Signature

KEY ELEMENTS

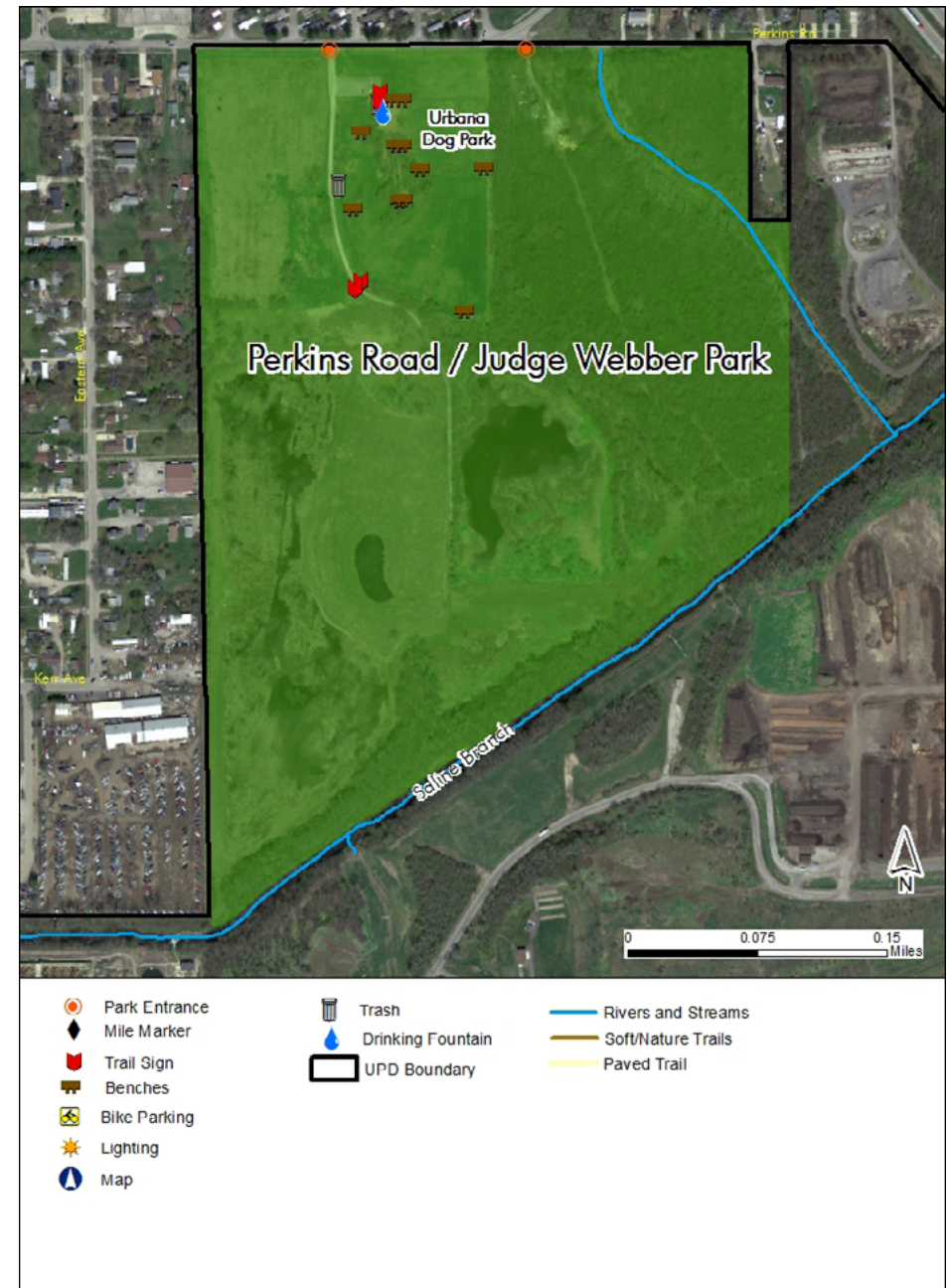
- Benches (11)
- Drinking Fountain (1)
- Trail Signs (4)
- Trash Cans (3)

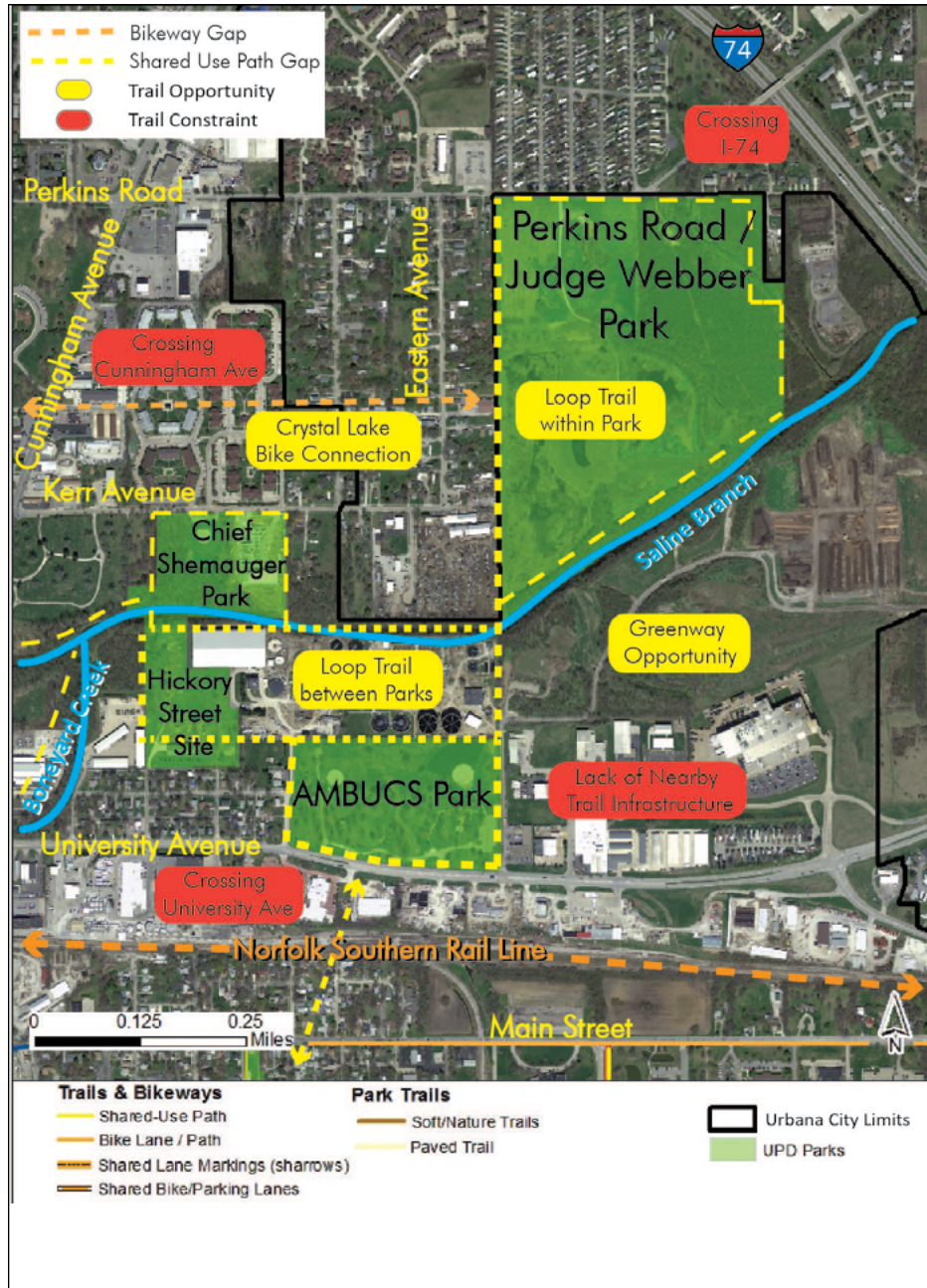
AMENITIES

- Urbana Dog Park
- Parking
- Archery (private)



Prairie habitat, Perkins Road/Judge Webber Park.





OPPORTUNITIES

Crystal Lake Bike Connection: Perkins Road/Judge Webber Park is located within cycling distance from Crystal Lake Park. Both Kerr Avenue and the Saline Branch offer potential links to connect these two signature parks.

Greenway Opportunity: Trail and natural area development along the Saline Branch will connect Perkins Road/Judge Webber Park with several UPD facilities including Crystal Lake Park, Chief Shemauger Park, and the Hickory Street Site as well as producing a regional connection to the west.

Loop Trail Between Parks: Walking and biking juxtaposition and proximity to Chief Shemauger Park, AMBUCS Park, and the Hickory Street Site provide an opportunity for the creation of a shared use loop trail between these areas.

Loop Trail Within Park: Developing loop trails within Perkins Road/Judge Webber Park will allow visitors to experience an array of natural areas including the Saline Branch, restored prairie, and woodlands while increasing opportunities for trail linkages to nearby parks.

CONSTRAINTS

Lack of Nearby Trail Infrastructure: The Perkins Road/Judge Webber Park area does not currently contain any designated bicycle or shared use trails. Connecting to the park by walking and biking using Perkins Road is a particular problem due to the lack of pedestrian and bike facilities on this roadway.

Crossing University Avenue, Cunningham Avenue, and I-74: Perkins Road/Judge Webber Park is bordered on nearly all sides by major roads or other land uses that present a difficult crossing for visitors. All options to create safe and accessible crossing locations should be considered to ensure an adequate connection for pedestrians and cyclists to this area.

4.4 WEAVER PARK

Area	Location	Type
60 acres	Main Street and Smith Road	Signature

KEY ELEMENTS

- Benches (2)
- Bike Parking Location (1)
- Trail Signs (3)
- Paved Trails (0.24 miles)
- Soft Trails (0.95 miles)

AMENITIES

- Natural Areas
- Open Space



Weaver Park entrance.



Weaver Park open space.





OPPORTUNITIES

Bike Connectivity: Victory Park is located within cycling distance from Weaver Park to the west. Both Main Street and a future trail along the Norfolk Southern rail line offer potential links to connect these two parks. Furthermore, Weaver Park is connected to existing bicycle infrastructure to the south via Washington Street and Kinch Street (connecting to Lohmann Park).

Kickapoo Rail Trail Connection: The Kickapoo Rail Trail is proposed to begin just north of Weaver Park. A potential trailhead in the Weaver Park area would serve a 24.5 mile regional connection between east Urbana and Kickapoo State Park near Danville, Illinois, with several other destinations along the way.

Loop Trail Between Parks: Walking and biking juxtaposition and proximity between Weaver Park, Prairie Park, Canaday Park, and the Brookens Sports Complex provide an opportunity for the creation of an accessible, shared use loop trail between these areas.

Loop Trail Within Park: Developing loop trails within Weaver Park will allow visitors to experience open space and natural areas while increasing opportunities for trail linkages to nearby parks and neighborhoods.

CONSTRAINTS

Crossing University Avenue: University Avenue is located close to Weaver Park to the northwest, presenting a difficult crossing for some visitors. All options to create safe and accessible crossing locations should be considered to ensure an adequate connection for pedestrians and cyclists in this area.

Smith Road: Due to the short distance on Smith Road between the southbound stop at Main Street and stoplight at University Avenue, vehicles queue on this street segment. There is also limited right-of-way to create a sidepath or bike lanes. It would be difficult to create a safe crossing from the Kickapoo Rail Trail to Weaver Park via Smith Road.

Main Street Spur: Main Street narrows down to two travel lanes with no space to extend the existing bike lanes from Scottswood Drive to University Avenue. The City of Urbana has ownership of this section of road. Constraints to building a sidepath here include issues regarding stormwater drainage and adjacent properties.

4.5 AMBUCS PARK

Area	Location	Type
22 acres	1100 block of East University Avenue	Community

KEY ELEMENTS

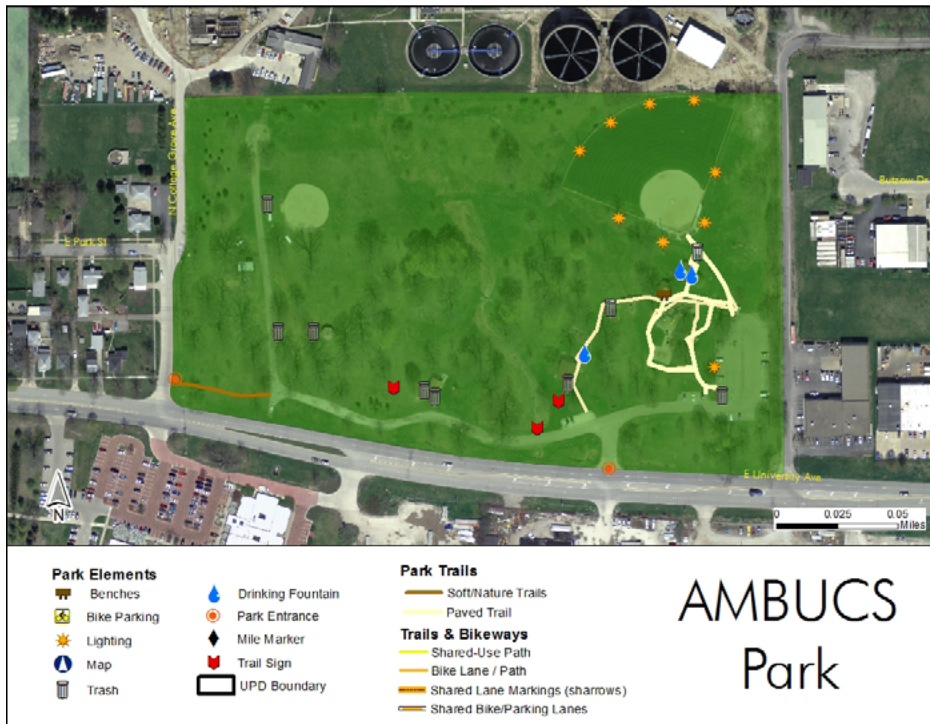
- Bench (1)
- Drinking Fountains (3)
- Lighting (9)
- Trail Signs (3)
- Trash Cans (9)
- Paved Trails (0.25 miles)
- Soft Trails (0.04 miles)

AMENITIES

- Accessible Areas
- Recreational Areas
- Open Space
- Parking
- Pavilions
- Playgrounds
- Restrooms



Accessible playground ensures all types of users can utilize this facility.



Park pavilion at AMBUCS Park.



OPPORTUNITIES

Greenway Opportunity: Trail and natural area development along the Saline Branch will increase connectivity between AMBUCS Park and several other UPD facilities including Crystal Lake Park, Chief Shemauger Park, Judge Webber Park, and the Hickory Street Site as well as producing a regional connection to the west.

Loop Trail Between Parks: Walking and biking juxtaposition and proximity between AMBUCS Park, Chief Shemauger Park, and the Hickory Street Site provide an opportunity for the creation of a shared use loop trail between these areas.

Loop Trail Within Park: Developing a loop trail within AMBUCS Park will allow visitors to experience the park's many amenities while increasing opportunities for trail linkages to nearby parks.

CONSTRAINTS

Contiguous Neighborhoods: AMBUCS Park is bordered on only one small side (west) by residential development. Most other contiguous areas present a difficult crossing or barrier for visitors. This arrangement underscores the need for adequate trail facilities in this area.

Crossing University Avenue: University Avenue presents a difficult crossing for neighborhoods south of AMBUCS Park. Creating a safe and accessible crossing location to ensure adequate connections for pedestrians and cyclists to this area would improve connectivity to Victory Park and other eastern and southern neighborhoods.

4.6 PRAIRIE PARK

Area	Location	Type
20 acres	Washington Street and Kinch Street	Community

KEY ELEMENTS

- Drinking Fountain (1)
- Lighting (22)
- Trash Cans (7)
- Paved Trails (0.29 miles)

AMENITIES

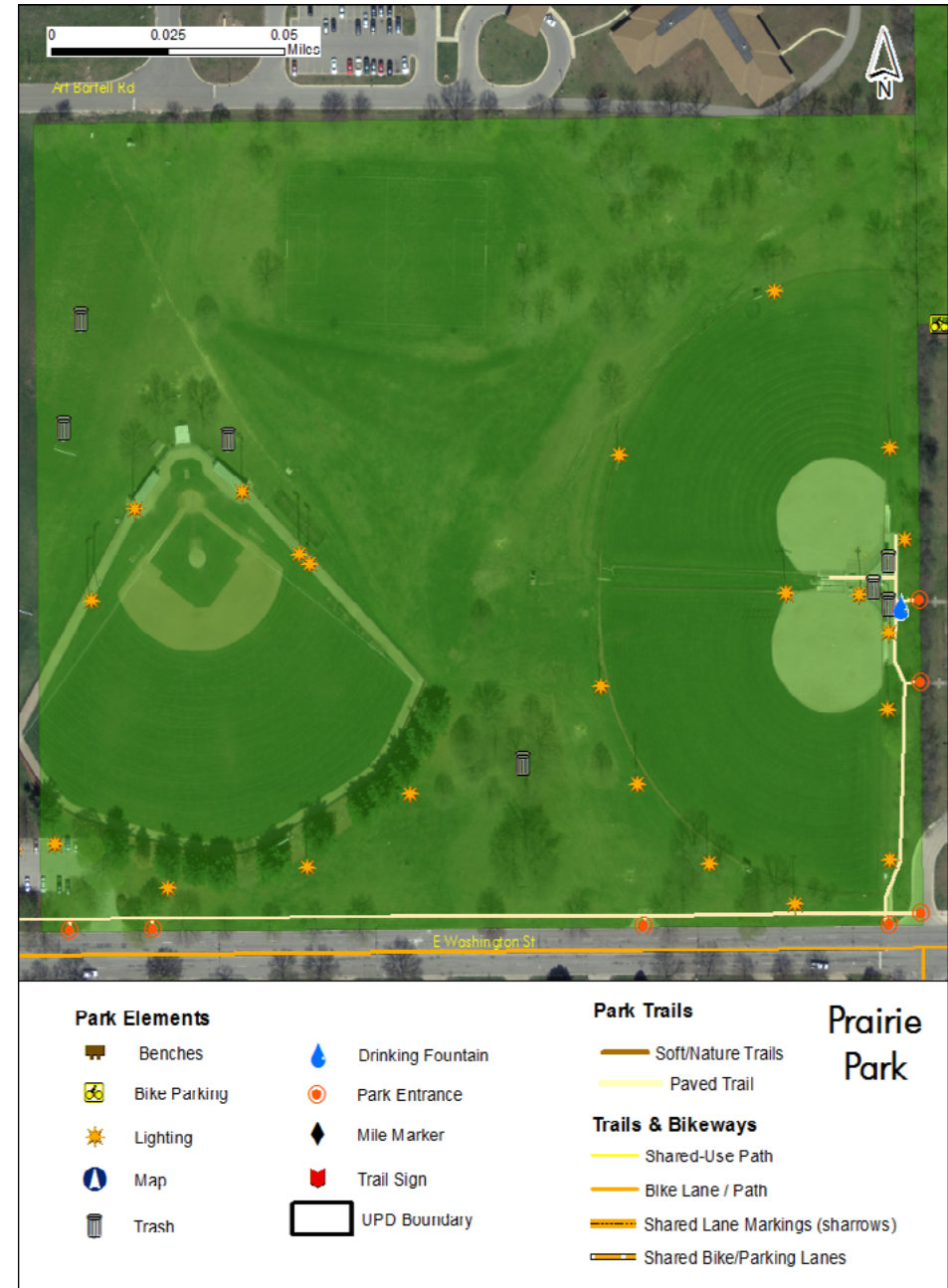
- Recreational Facilities
- Open Space
- Parking



Signage near Prairie Park entrance.



Picnic tables were recently added at Prairie Park to allow people to gather and hold activities.





OPPORTUNITIES

Bicycle Connectivity: Victory Park is located within cycling distance from Prairie Park via Lierman Avenue and Main Street. Furthermore, Prairie Park is connected to existing bicycle infrastructure to the south via Washington Street and Kinch Street linking to Lohmann Park.

Access to Neighborhoods: Prairie Park is accessible to many nearby residential neighborhoods. Likewise, existing and future bicycle paths will connect cyclists traveling from slightly further distances such as Lohmann Park and southern, western, and northern neighborhoods.

Loop Trail Between and Within Parks: Walking and biking juxtaposition and proximity between Prairie Park, Weaver Park, Canaday Park and the Brookens Sports Complex provide an opportunity for the creation of an accessible, shared use loop trail between these areas. Furthermore, developing a loop trail within Prairie Park will improve visitor interaction with recreational facilities and open space while increasing opportunities for trail linkages to nearby parks and neighborhoods.



Softball field, Prairie Park.

4.7 BROOKENS SPORTS COMPLEX

Area	Location	Type
11 acres	Washington Street and Lierman Avenue	Community

KEY ELEMENTS

- Bike Parking (3)
- Lighting (20)
- Trash Cans (3)
- Paved Trails (1.2 miles)

AMENITIES

- Basketball
- Recreational Facilities
- Open Space
- Parking
- Restrooms
- Soccer Fields



Bicycle parking at the Brookens Center Gym.



Shared-use path along the west side of Lierman Avenue adjacent to the Brookens Sports Complex.





OPPORTUNITIES

Bicycle Connectivity: Victory Park is located within cycling distance from the Brookens Sports Complex via Lierman Avenue and Main Street. Furthermore, the Brookens Sports Complex is connected to existing bicycle infrastructure to the south via Washington Street and Kinch Street linking to Lohmann Park.

Access to Neighborhoods: The Brookens Sports Complex is accessible to many nearby residential neighborhoods. Likewise, existing and future bicycle paths will connect cyclists traveling from slightly further distances such as Lohmann Park and southern, western, and northern neighborhoods.

Loop Trail Between and Within Parks: Walking and biking juxtaposition and proximity between the Brookens Sports Complex, Prairie Park, Weaver Park, and Canaday Park provide an opportunity for the creation of an accessible, shared use loop trail between these areas. Furthermore, developing a loop trail within the Brookens Sports Complex will improve visitor interaction with recreational facilities and open space while increasing opportunities for trail linkages to nearby parks and neighborhoods.



Family bicycling on Art Bartell Road adjacent to the north side of the Brookens Sports Complex.

4.8 CANADAY PARK

Area	Location	Type
3 acres	300 block of South Lierman Avenue	Community

KEY ELEMENTS

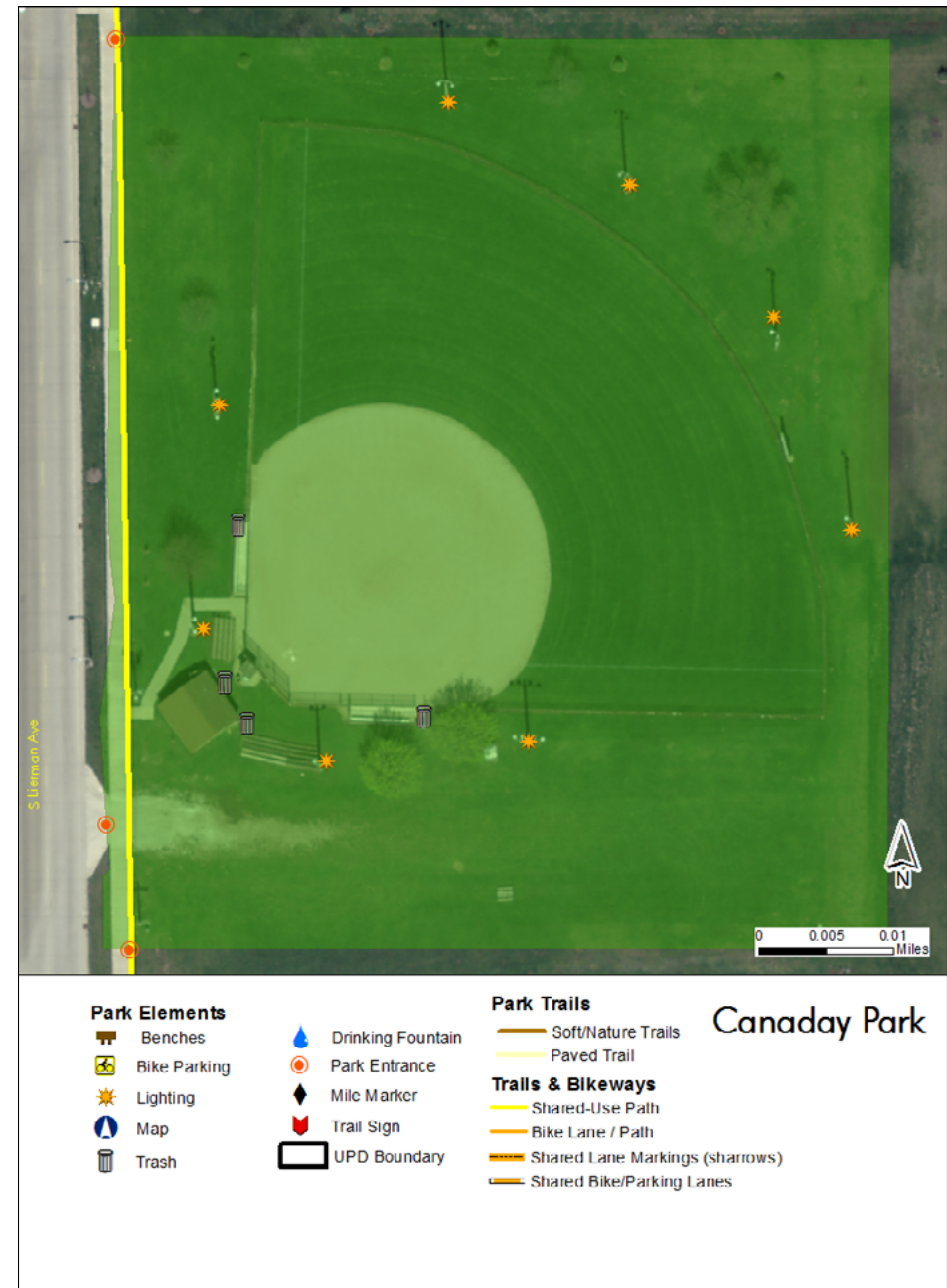
- Lightning (3)
- Trash Cans (4)
- Paved Trails (0.01 miles)

AMENITIES

- Recreational Facilities (baseball / softball)
- Parking



Softball field, Canaday Park.





OPPORTUNITIES

Bicycle Connectivity: There are many parks located within cycling distance of Canaday Park including the Brookens Sports Complex, Prairie Park, Victory Park, AMBUCS Park, Weaver Park, and Lohmann Park. Furthermore, existing bicycle infrastructure along Lierman Avenue, Washington Street, Main Street, Philo Road, and Kinch Street provides a good starting point for closing bicycle network gaps between these parks.

Loop Trails Between Parks: Walking and biking juxtaposition and proximity between Prairie Park, Weaver Park, and Canaday Park provide an opportunity for the creation of a shared use loop trail between these three areas.

CONSTRAINTS

Access to Neighborhoods: Canaday Park does not have direct access to neighborhoods from the west or the east. The park is bordered by Champaign County facilities on the east and north sides, and a manufacturing industry on the west.

Area between Main Street and University Avenue: There is currently no direct north-south connection from Canaday Park to AMBUCS Park where Lierman Avenue ends at Main Street and University Avenue. Primary barriers include the current active use of the Norfolk Southern rail line and existing land uses along University Avenue with no cut-throughs or sidewalks. All options for a safe crossing should be considered to ensure an adequate connection for pedestrians and cyclists between these areas.

4.9 LOHMANN PARK

Area	Location	Type
15 acres	Between Colorado Avenue and Florida Avenue (south of Thomas Paine School)	Neighborhood

KEY ELEMENTS

- Benches (4)
- Trail Sign (1)
- Trash Cans (2)

AMENITIES

- Recreational Areas
- Open Space



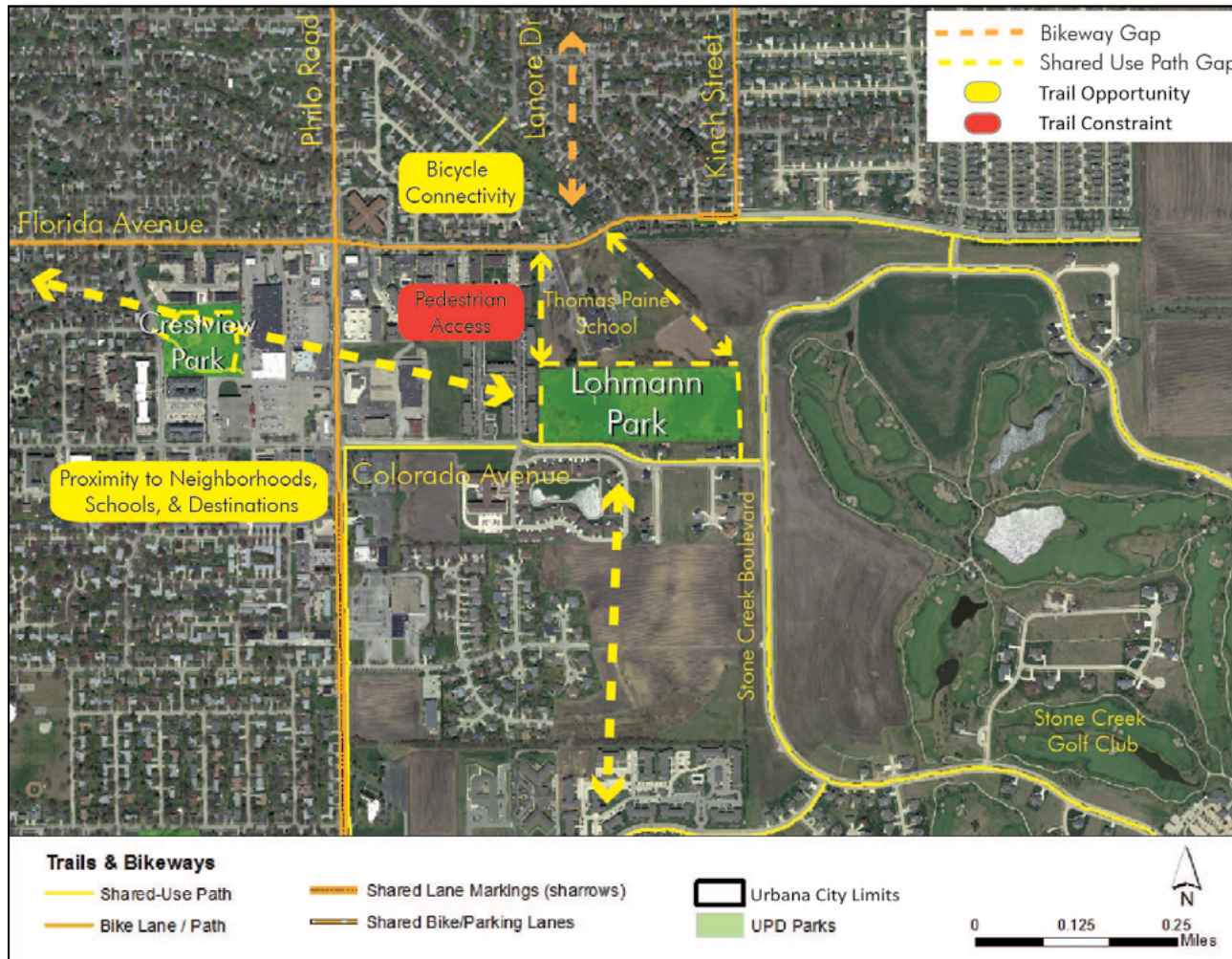
Disc golf course, Lohmann Park.



Sitting area and open space, Lohmann Park.



Message board, Lohmann Park.



OPPORTUNITIES

Bicycle Connectivity: Crestview Park is located within a half-mile cycling (and quarter mile walking) distance from Lohmann Park. Furthermore, existing bicycle infrastructure along Florida Avenue, Philo Road, Kinch Street, and Colorado Avenue present connection opportunities to slightly further UPD facilities including Prairie Park, Weaver Park, and Larson Park.

Proximity to Neighborhoods, Schools, & Destinations: Lohmann Park is accessible to nearby residential neighborhoods, with Crestview Park located within a quarter-mile walking distance from the park's western edge. Likewise, commercial areas along Philo Road are within walking and cycling distance and are relatively well connected by existing trail facilities.

CONSTRAINTS

Pedestrian Access: Lohmann Park is not currently accessible via sidewalks or shared use paths from the north near Florida Avenue and Thomas Paine School. Coupled by only sparse residential developments to the south and the east, enhanced northern accessibility will serve to better connect the park to local neighborhoods.

4.10 CHIEF SHEMAUGER PARK

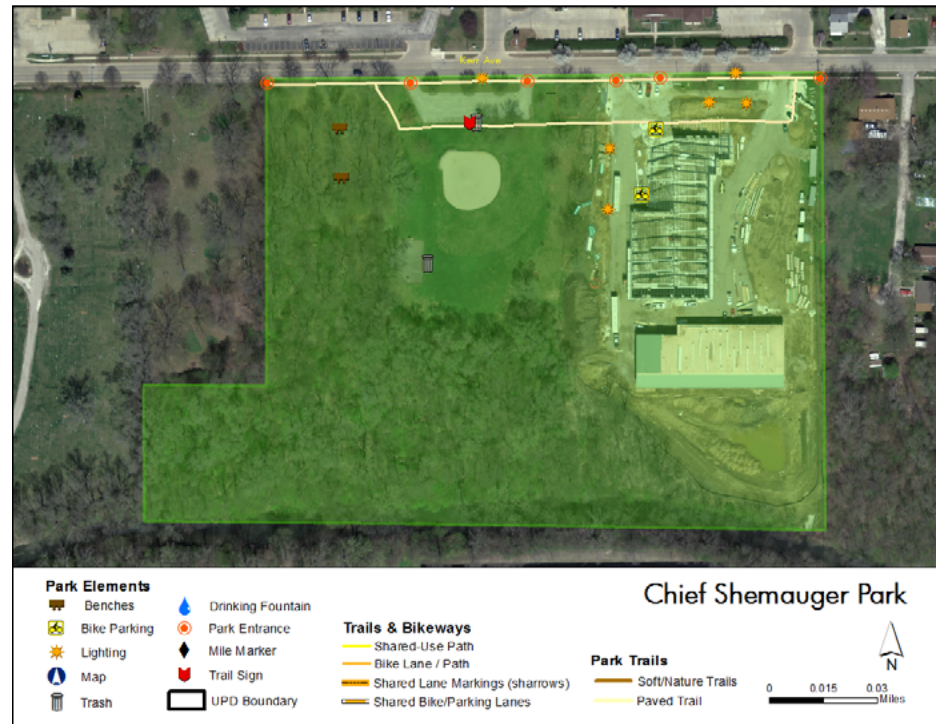
Area	Location	Type
13 acres	1000 Block of Kerr Avenue	Neighborhood

KEY ELEMENTS

- Benches (2)
- Bike Parking Locations (2)
- Lighting (6)
- Trail Sign (1)
- Trash (2)
- Paved Trails (0.29 miles)

AMENITIES

- Recreational Facilities
- Open Space
- Parking



Urbana Park District Planning and Operations facility, Chief Shemauger Park.



Open space and recreational facilities, Chief Shemauger Park.



OPPORTUNITIES

Greenway Opportunities: Trail and natural area development along the Saline Branch and Boneyard Creek will increase connectivity between Chief Shemauger Park and several other UPD facilities including Crystal Lake Park, AMBUCS Park, Judge Webber Park, Leal Park, Patterson Parklet, Phillips Recreation Center, and the Hickory Street Site as well as producing a regional connection to the University of Illinois.

Loop Trail Between Parks: Walking and biking juxtaposition and proximity between Chief Shemauger Park, AMBUCS Park, and the Hickory Street Site provide an opportunity for the creation of a shared use loop trail between these areas.

Loop Trail Within Park: Developing a loop trail within Chief Shemauger Park will allow visitors exposure to all of the park's amenities while increasing opportunities for trail linkages to nearby parks.

CONSTRAINTS

Crossing University and Cunningham: Both University Avenue and Cunningham Avenue present difficult crossing areas for neighborhoods south and west of Chief Shemauger Park. Creating safe and accessible crossing locations to ensure adequate connections for pedestrians and cyclists to this area assists in connecting this park to local neighborhoods as well as developing potential regional trail networks along the Norfolk Southern rail line.

4.11 BLAIR PARK

Area	Location	Type
11 acres	Vine Street and Florida Avenue	Neighborhood

KEY ELEMENTS

- Benches (18)
- Bike Parking Locations (2)
- Drinking Fountain (2)
- Lighting (22)
- Trash Cans (8)
- Paved Trails (0.38 miles)

AMENITIES

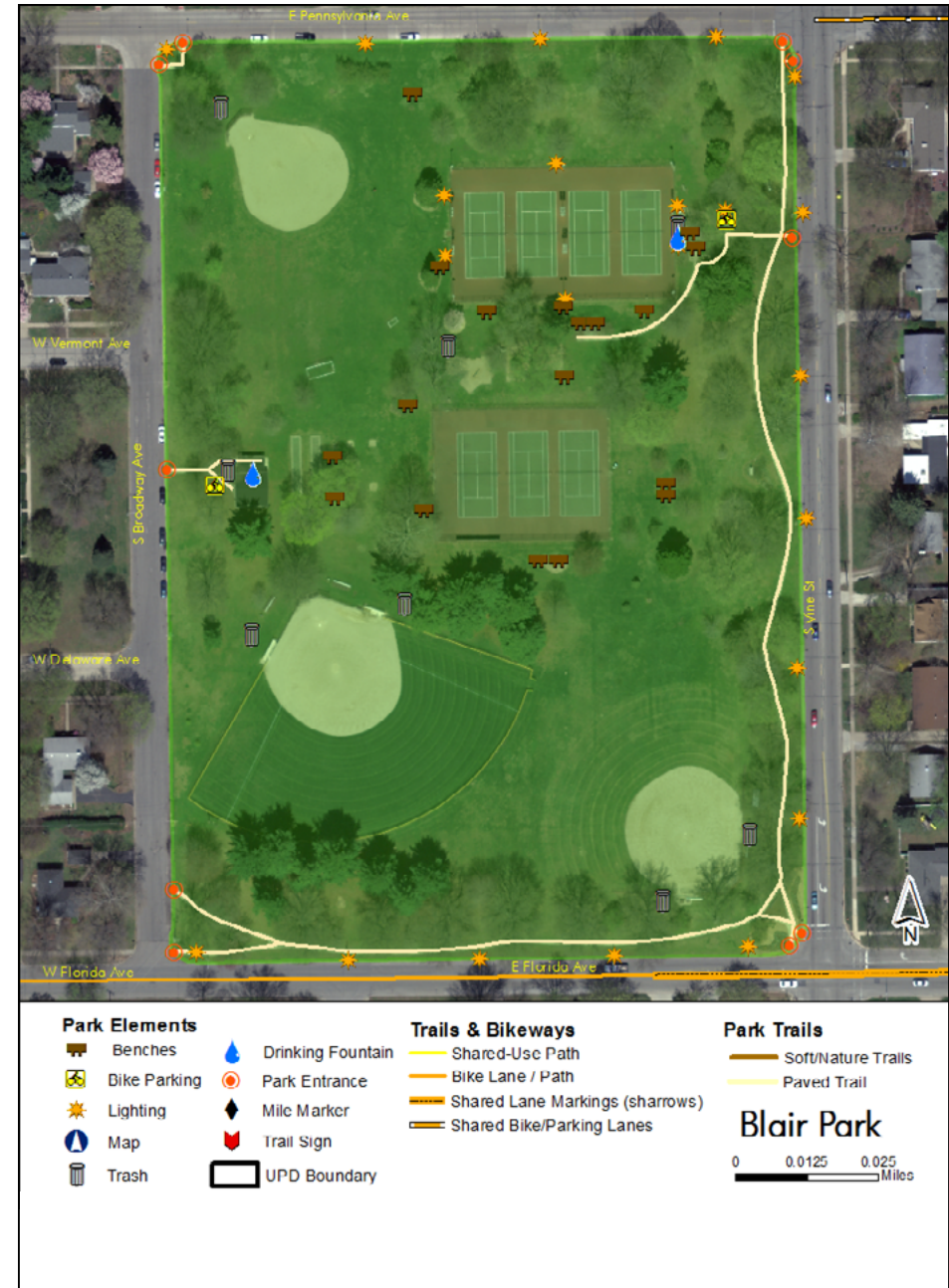
- Recreational Facilities
- Gardens
- Open Space
- Playgrounds
- Restrooms

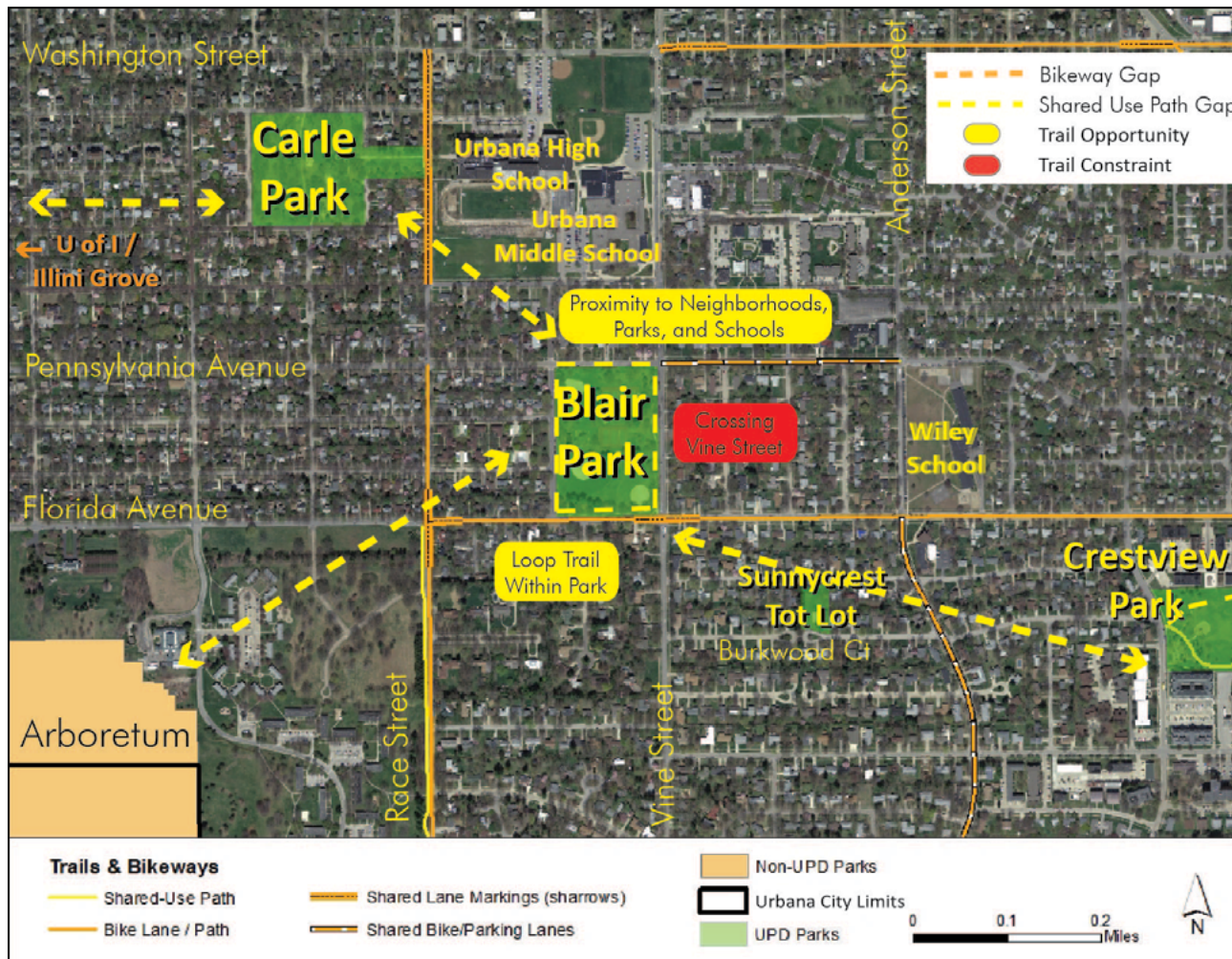


Tennis Court at Blair Park



A distinct entrance into Blair Park.





OPPORTUNITIES

Loop Trail Within Park: Developing a loop trail within Blair Park would give visitors exposure to the park's many amenities while increasing opportunities for trail linkages to nearby parks: Sunnycrest Tot Lot, Crestview Park, Carle Park, and the [University of Illinois] Arboretum.

Proximity to Neighborhoods, Parks, and Schools:

Blair Park is accessible to many nearby residential neighborhoods with Carle Park, Sunnycrest Tot Lot, Crestview Park, and the [University of Illinois] Arboretum located within walking distance. Likewise, bicycle path opportunities to the south west will benefit cyclists traveling from slightly further distances and Meadowbrook Park. Blair Park is also very close to Urbana Middle School, Urbana High School, and Wiley Elementary School.

CONSTRAINTS

Crossing Vine Street: Park visitors accessing Blair Park on foot or by bicycle from the east only have an all-way stop to cross the minor arterial of Vine Street at Florida Avenue. Options for safe crossings should be considered to ensure adequate connections for pedestrians and cyclists to this area.

4.12 CARLE PARK

Area	Location	Type
11 acres	Indiana Avenue and Garfield Avenue	Neighborhood

KEY ELEMENTS

- Benches (11)
- Bike Parking Location (1)
- Drinking Fountain (1)
- Lighting (32)
- Maps (2)
- Trail Signs (2)
- Trash Cans (2)
- Paved Trails (0.31 miles)
- Soft Trails (0.12 miles)

AMENITIES

- Hickman Tree Walk
- Gardens
- Open Space
- Pavilions
- Playground
- Sculptures



Hickman Tree Walk, Carle Park.



Drinking fountain along nature trail and open space, Carle Park.



OPPORTUNITIES

Proximity to Neighborhoods, Parks, and Schools: Carle Park is accessible to many nearby residential neighborhoods, Urbana High School, and Leal School. Blair Park, Sunnycrest Tot Lot, Crestview Park, [University of Illinois'] Illini Grove, and the [University of Illinois] Arboretum are also located within walking distance. Likewise, nearby bicycle path opportunities will benefit cyclists traveling from slightly further distances such as Phillips Recreation Center to the north and Meadowbrook Park to the south.

4.13 SOUTH RIDGE PARK

Area	Location	Type
11 acres	Myra Ridge Subdivision	Neighborhood

KEY ELEMENTS

- Benches (7)
- Trail Signs (5)
- Trash Cans (2)
- Paved Trails (0.73 miles)

AMENITIES

- Playground
- Trails
- Open Space



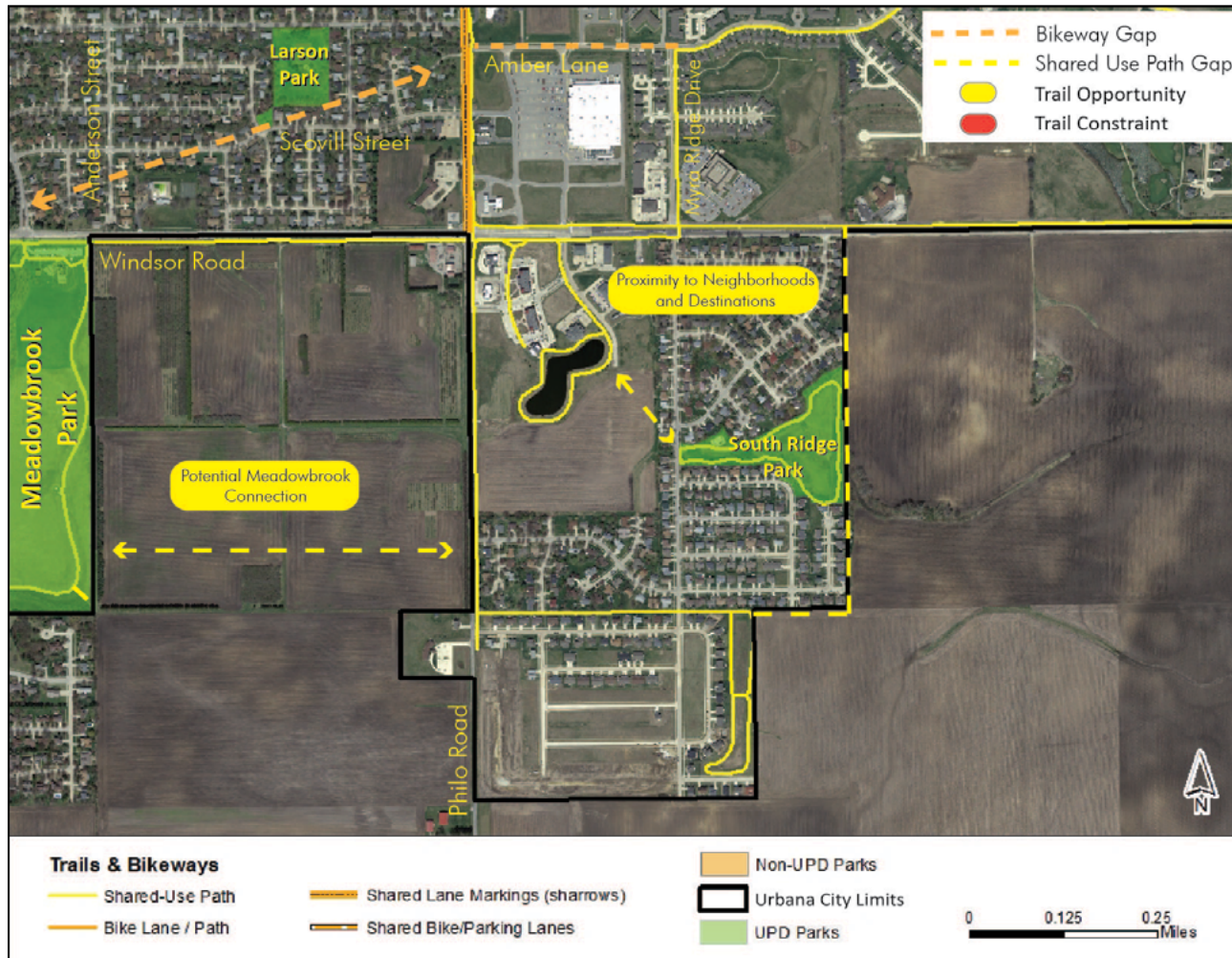
South Ridge Park entrance.



Paved trail along seating areas and open space, South Ridge Park.



South Ridge Park playground.



OPPORTUNITIES

Potential Meadowbrook Connection:

Developing a southern trail connection between Meadowbrook Park and South Ridge Park will increase connectivity within the UPD park system while providing enhanced accessibility options to residents of the Myra Ridge subdivision.

Proximity to Neighborhoods and Destinations:

South Ridge Park is within a quarter-mile walking distance for residents of the Myra Ridge subdivision as well as visitors to The Pines retail center and other commercial- and service-based businesses along Philo Road and Windsor Road. Existing and future bicycle facilities will also provide access to visitors from slightly further distances.

4.14 KING PARK

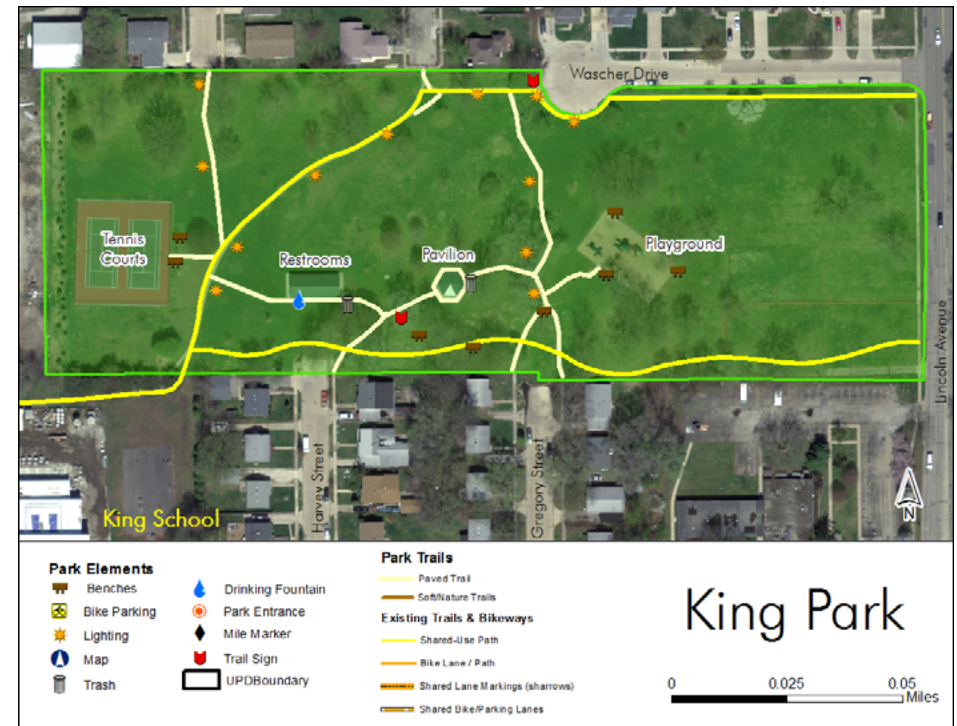
Area	Location	Type
8 acres	Near Lincoln Avenue and Fairview Avenue	Neighborhood

KEY ELEMENTS

- Benches (8)
- Drinking Fountain (1)
- Lighting (12)
- Trail Signs (2)
- Trash Cans (2)
- Paved Trails (0.64 miles)

AMENITIES

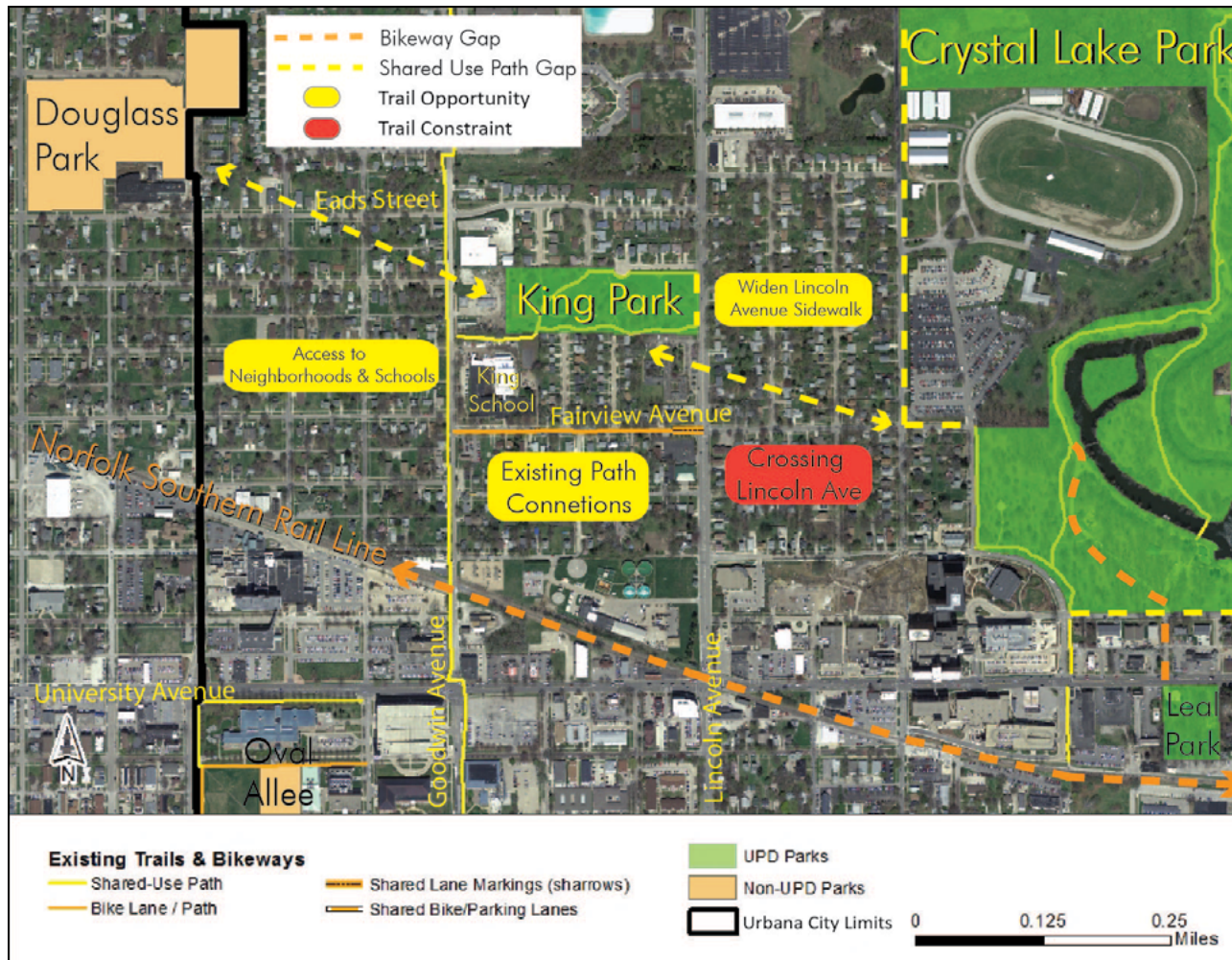
- Pavilion
- Restrooms
- Tennis Courts
- Playground
- Parking



Paved trails connect King Park to nearby homes.



Paved path, pavilion, and playground (top center), King Park.



OPPORTUNITIES

Widen Lincoln Avenue Sidewalk: The sidewalk on the west side of Lincoln Avenue also runs along the east side of King Park. Widening this sidewalk to a minimum 8' sidepath would create a full loop trail around King Park. Cooperation with the City of Urbana will be required.

Walking & Biking: Crystal Lake Park, a signature park that attracts both regional and neighborhood visitors, and Douglass Park (Champaign) are within both walking and biking distance of King Park. This proximity is an opportunity to link both locations. The Oval Allee, part of the University of Illinois campus, is also located within biking distance.

Access to Neighborhoods & Schools: King School is located adjacent to King Park with direct access points for pedestrians and cyclists. The park also offers recreational amenities to a large number of residences within the surrounding neighborhood.

Access to Shared-Use Paths/Bikeways: Shared-use paths along Goodwin Avenue and bike lanes and routes along Fairview Avenue are important links for neighborhood residents to access the park while offering the opportunity to build further connections to Crystal Lake Park.

CONSTRAINTS

Crossing Lincoln Avenue: Park visitors accessing King Park on foot or by bicycle from the east can only cross the arterial Lincoln Avenue at a signalized intersection on Fairview Avenue, which is south of King Park.

Connectivity to Crystal Lake: Although King Park and Crystal Lake Park are located within walkable and bikable distances from one another, there are currently no shared-use paths connecting the two locations.

4.15 CRESTVIEW PARK

Area	Location	Type
6 acres	Cottage Grove Avenue and Burkwood Drive	Neighborhood

KEY ELEMENTS

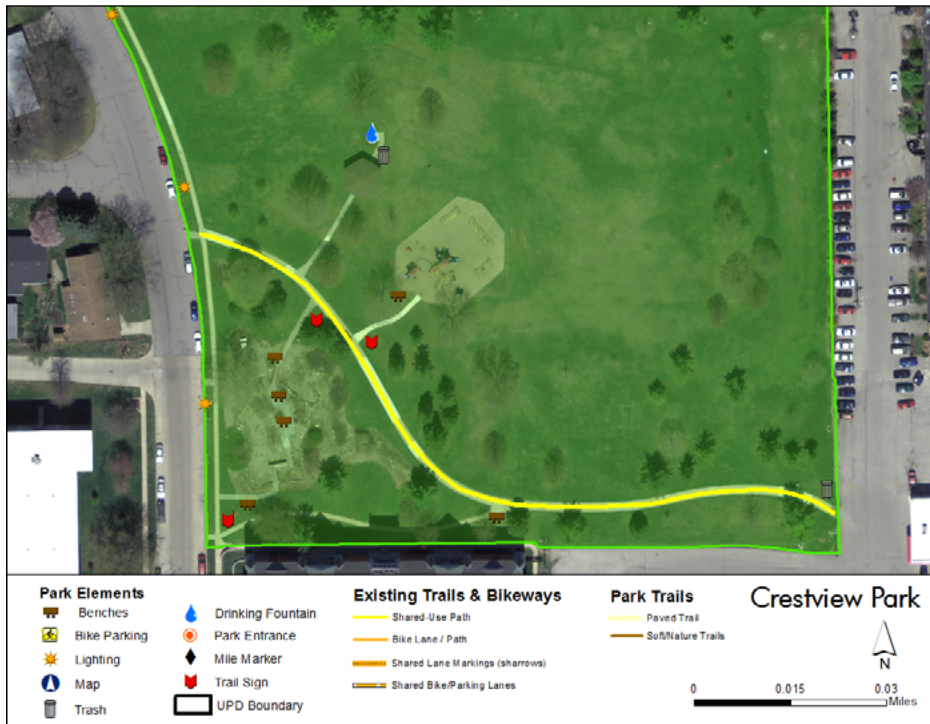
- Benches (6)
- Drinking Fountain (1)
- Lighting (3)
- Trail Signs (3)
- Trash Cans (2)
- Paved Trails (0.36 miles)

AMENITIES

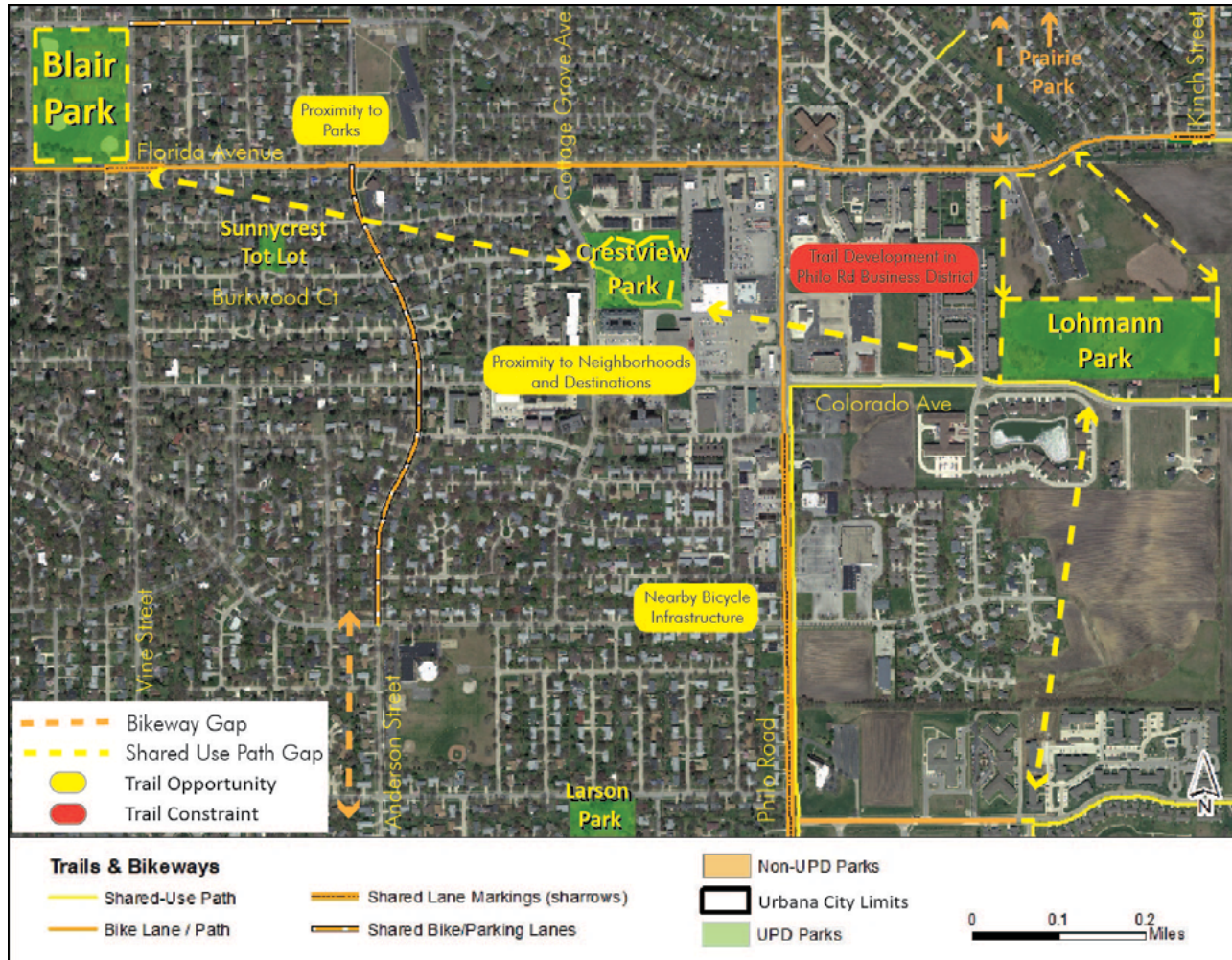
- Gardens
- Open Space
- Paths
- Pavilion
- Playground
- Recreational Facilities



Drinking fountain, pavilion, and waste facilities, Crestview Park.



Paved trail passing by a playground and open space, Crestview Park.



OPPORTUNITIES

Loop Trail Within Park: Developing a loop trail within Crestview Park would give visitors exposure to the park's many amenities while increasing opportunities for trail linkages to nearby parks: Sunnycrest Tot Lot, Blair Park, and Lohmann Park.

Proximity to Neighborhoods and Destinations: Crestview Park is accessible to Blair Park, Sunnycrest Tot Lot and Lohmann Park (located within a quarter-mile walking distance) as well as many nearby residential neighborhoods. Likewise, Crestview Park is situated directly to the west of the Philo Road Business District. Furthermore, bicycle path opportunities to the north, east, and west will connect cyclists traveling from slightly further distances.

CONSTRAINTS

Philo Road Business District: Philo Road underwent a road diet in 2008, reducing the number of lanes (and thus the crossing distance). Additionally, a mid-block crosswalk was added, Florida Avenue contains a stoplight with bike lanes, and there is a 4-way stop at Colorado Avenue. However, all of these favorable features have not yet been connected to an official trail or bikeway connection leading east and west through the Philo Road Business District toward Crestview Park. This is a constraint, because cooperation is needed from the landowners to implement such a trail.

4.16 LARSON PARK (FORMERLY WHEATFIELD PARK)

Area	Location	Type
5 acres	McHenry Street and Combes Street	Neighborhood

KEY ELEMENTS

- Benches (2)
- Drinking Fountain (1)
- Trash Cans (3)
- Paved Trails (0.35 miles)

AMENITIES

- Open Space
- Playgrounds
- Recreational Facilities

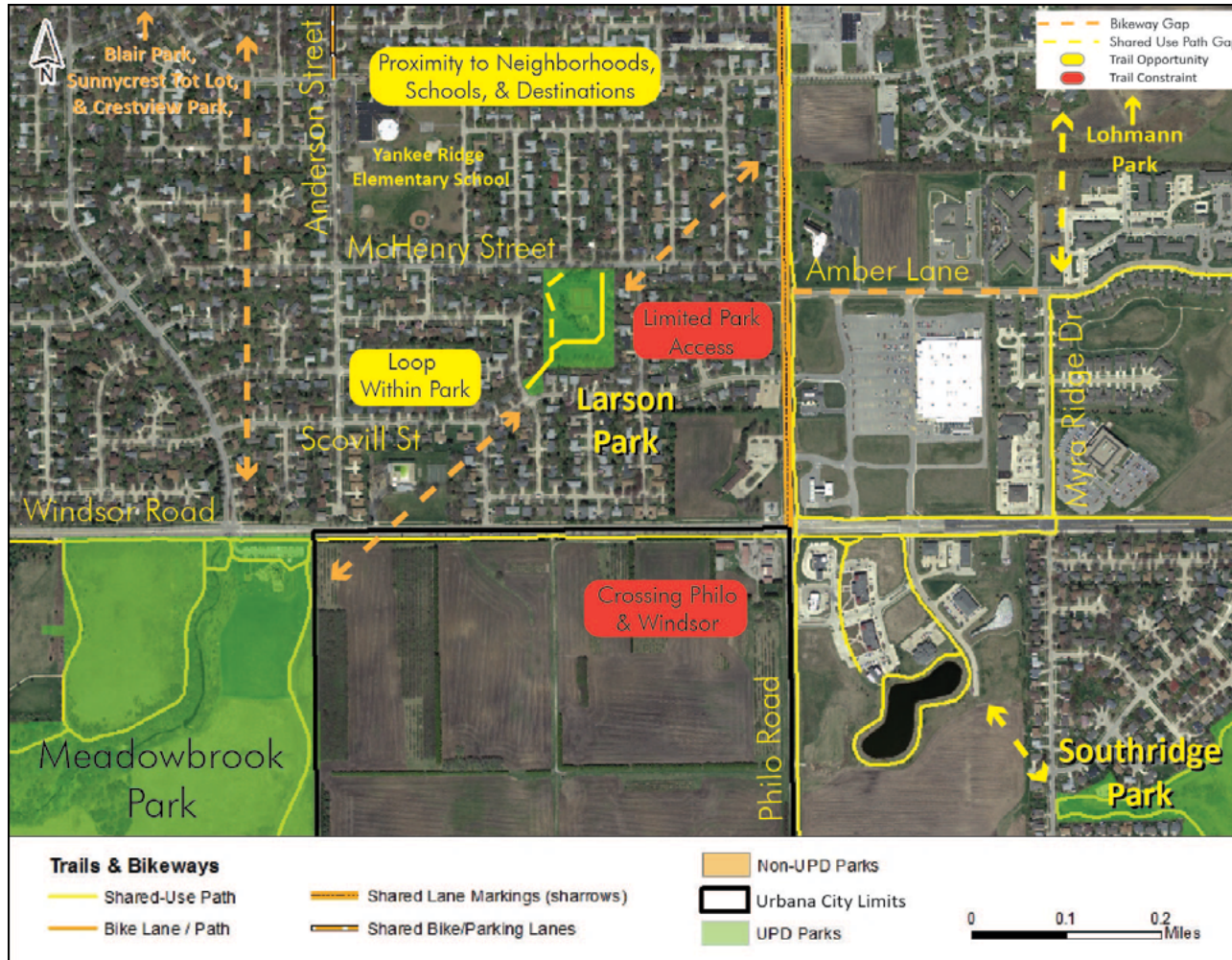


Entrance to Larson Park from McHenry Street (2015).



Refurbished tennis court and new playground, Larson Park (2015).





OPPORTUNITIES

Small Loop Within Park: Developing a small loop trail within Larson Park will implement recommendations from this park's master plan, and meet neighbor preferences. It will also allow visitors adequate walking space and exposure to the park's amenities while increasing opportunities for trail linkages to nearby parks: South Ridge Park and Meadowbrook Park.

Proximity to Neighborhoods, Schools, & Destinations: Larson Park is located within a quarter-mile walking distance from Meadowbrook Park as well as nearby residential neighborhoods, Yankee Ridge Elementary School, and businesses along Philo Road and Windsor Road. Furthermore, bicycle path opportunities to the north and south will connect cyclists traveling from slightly further distances and connecting to Meadowbrook Park.

CONSTRAINTS

Crossing Philo & Windsor: Both Philo Road and Windsor Road present a potentially difficult crossing for visitors. Ensuring safe and accessible crossing locations will promote adequate connections between Larson Park and other UPD facilities as well as surrounding destinations.

4.17 VICTORY PARK

Area	Location	Type
5 acres	Green Street and Lynn Street	Neighborhood

KEY ELEMENTS

- Benches (9)
- Bike Parking Location (1)
- Drinking Fountain (1)
- Lighting (4)
- Trail Sign (1)
- Trash Can (5)
- Paved Trails (0.42 miles)

AMENITIES

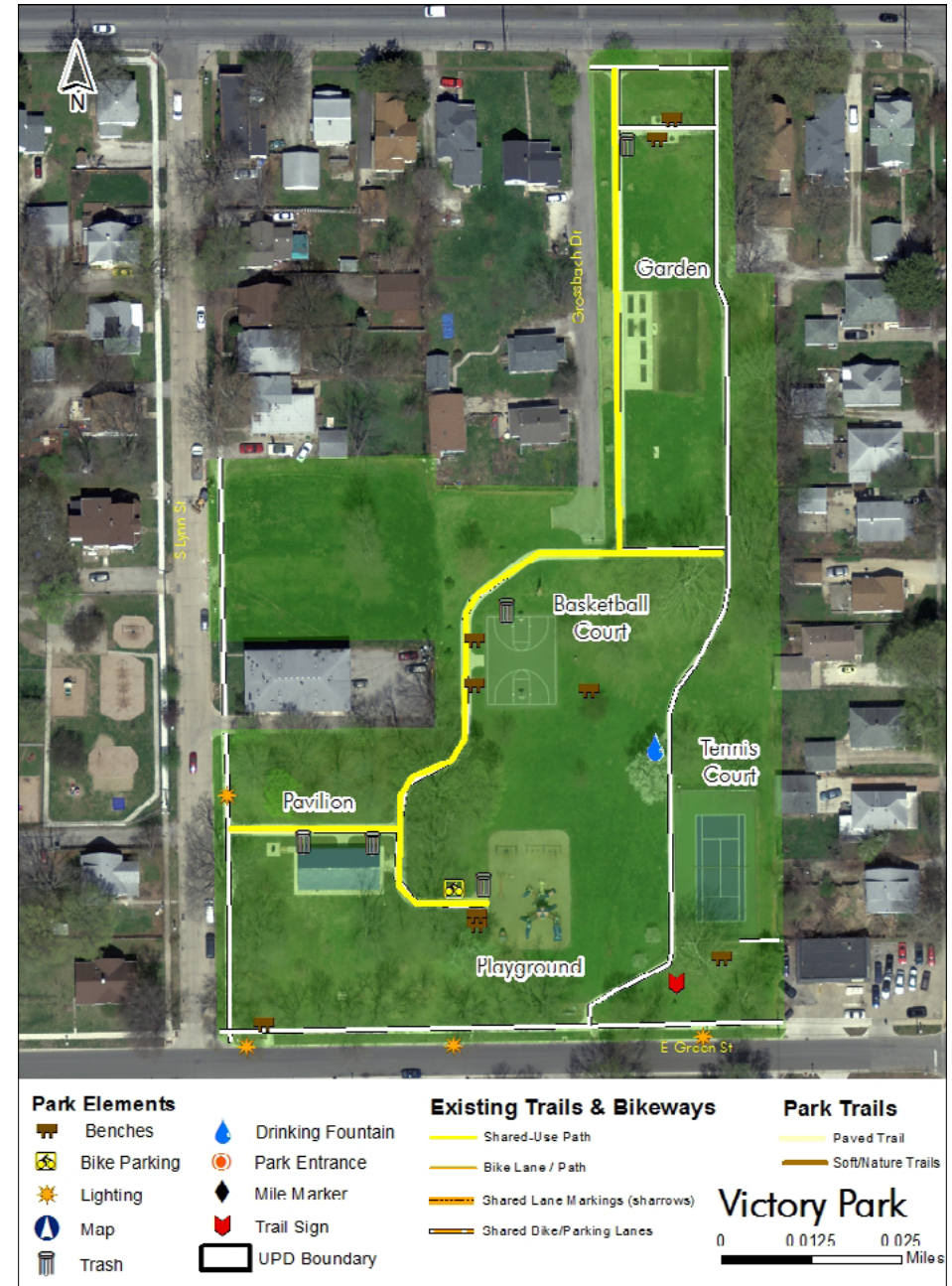
- Recreational Facilities
- Gardens
- Open Space
- Paths
- Pavilions
- Playground

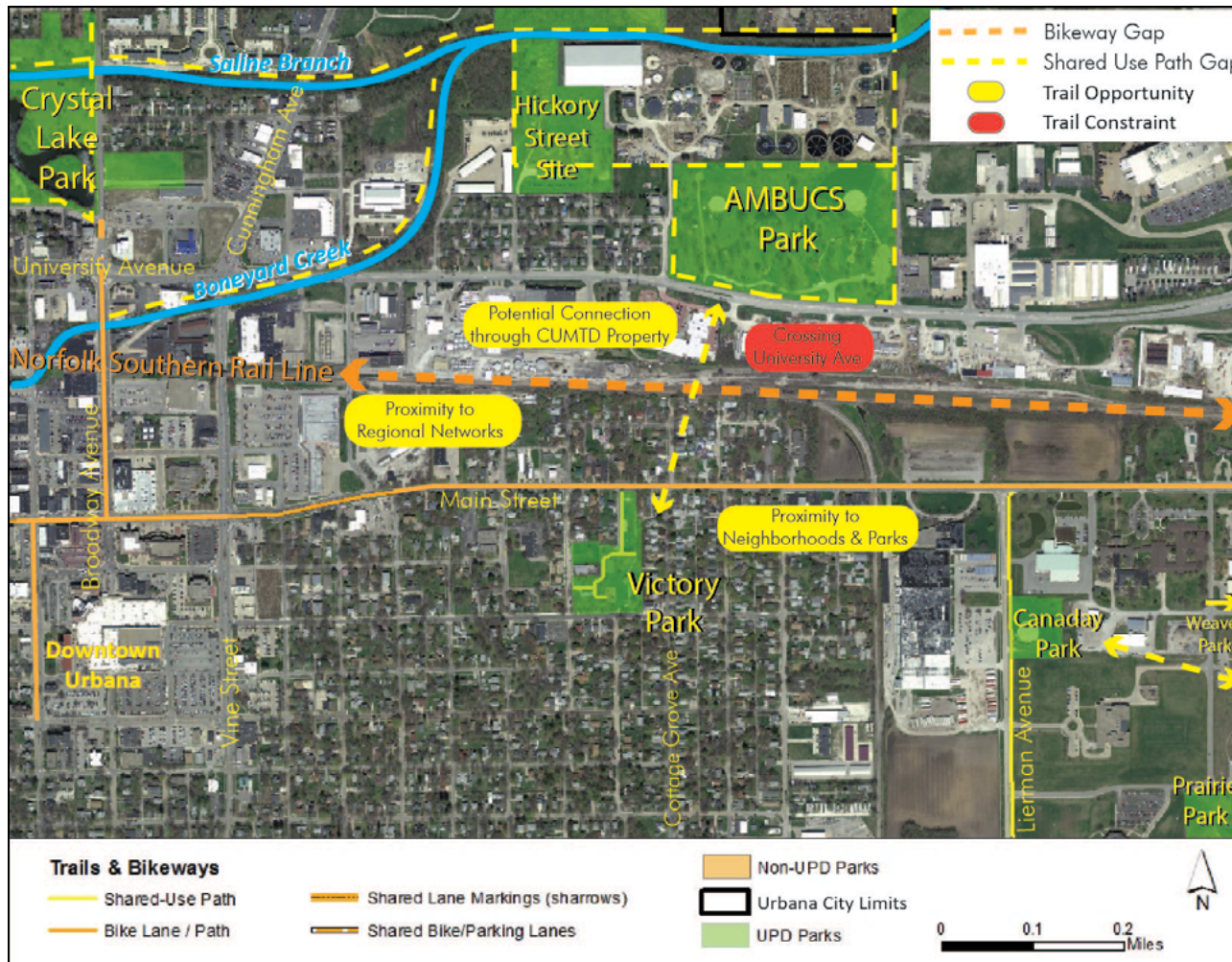


Bike parking and trail near a pavilion, Victory Park.



Sitting area along a paved park trail, Victory Park.





OPPORTUNITIES

Proximity to Regional Networks: Victory Park is located one block from the Norfolk Southern rail line – a potential future Rail-Trail connection to Leal Park as well as regional destinations.

Proximity to Neighborhoods & Parks: Victory Park is located within a quarter-mile walking distance of AMBUCS Park while being immediately accessible from nearby residential neighborhoods. Furthermore, bicycle facilities to the north and west (Main Street) and shared use paths to the east (Lierman Avenue) provide very good connections for cyclists and pedestrians traveling from slightly further distances such as Phillips Recreation Center and Weaver Park respectively.

Potential Connection through CUMTD Property: The Champaign-Urbana Mass Transit District (CUMTD) is headquartered just south of University Avenue and north of the Norfolk Southern rail line within a critical area for linking Victory and AMBUCS parks. This location presents an opportunity to work with CUMTD to investigate the feasibility of providing access along the east side of their property.

CONSTRAINTS

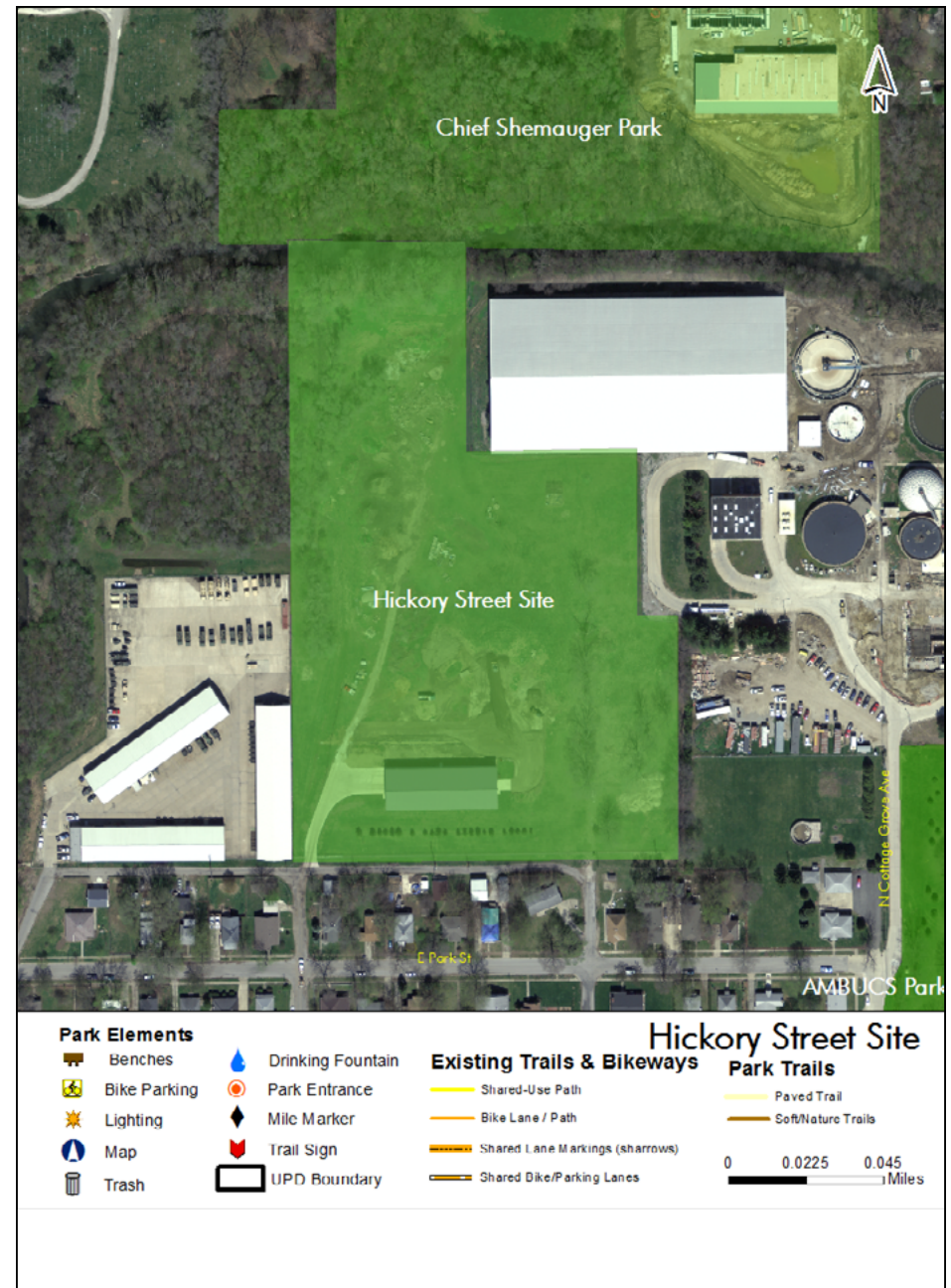
Crossing University Avenue: University Avenue presents a difficult crossing for visitors coming from the northern park areas: AMBUCS Park, Chief Shemauger Park, Judge Webber Park, and the Hickory Street Site. In particular, the difficulty of traversing the area between Main Street and University Avenue (especially the Norfolk Southern railroad tracks) to get from Victory Park to AMBUCS Park is high. Ensuring a safe and accessible crossing location will promote adequate connections between Victory Park and these northern UPD facilities as well as to surrounding destinations.

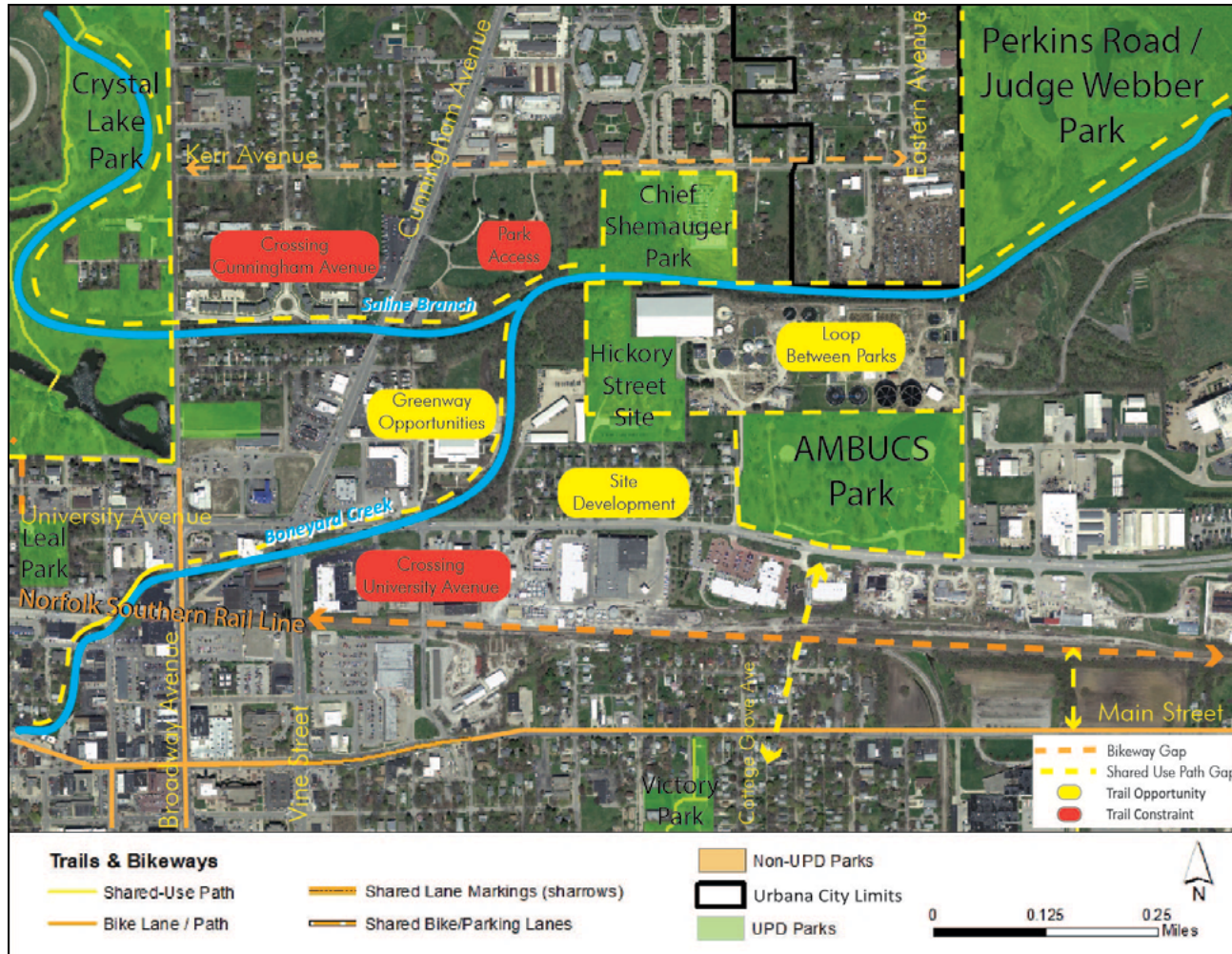
4.18 HICKORY STREET SITE

Area	Location	Type
10 acres	Hickory Street north of Park Street	Special Use Facility

KEY ELEMENTS

- Park District Storage Facilities





OPPORTUNITIES

Greenway Opportunities: Trail and natural area development along and across the Saline Branch and Boneyard Creek will increase connectivity between the Hickory Street Site and several other UPD facilities including Chief Shemauger Park, AMBUCS Park, Judge Webber Park, Crystal Lake Park, Patterson Parklet, and Phillips Recreation Center, as well as producing a regional connection to the University of Illinois.

Loop Trail Between Parks: Walking and biking juxtaposition and proximity between Chief Shemauger Park, AMBUCS Park, and the Hickory Street Site provide an opportunity for the creation of a shared use loop trail between these areas.

Site Development: The Hickory Street Site is developed for park district storage facilities. It does not support public access. However, its location near several other UPD facilities (Chief Shemauger Park, AMBUCS Park, Judge Webber Park, Victory Park, and Crystal Lake Park) as well as the Saline Branch, Boneyard Creek, and Norfolk Southern rail line present a wide array of development opportunities for the site. Trail linkages to nearby parks as well as regional trail and greenway networks should be a principal component of future site enhancements.

CONSTRAINTS

Park Access: The Hickory Street Site does not have direct access to neighborhoods from the north, west, or the east. The park is bordered by Harvey and East Lawn Cemeteries to the north, the Boneyard Creek and a storage facility to the west, a treatment plant operated by the Urbana-Champaign Sanitary District to the east, and a small residential neighborhood to the south.

Crossing University and Cunningham: Both University Avenue and Cunningham Avenue present difficult crossing areas for neighborhoods south and west of the Hickory Street Site. Creating safe and accessible crossing locations to ensure adequate connections for pedestrians and cyclists to this area would assist in connecting this park to local neighborhoods as well as developing potential regional trail networks along the Norfolk Southern rail line.

4.19 LEAL PARK

Area	Location	Type
3 acres	303 West University Avenue	Special Use Facility

KEY ELEMENTS

- Benches (3)
- Lighting (7)
- Trash Cans (1)
- Paved Trails (0.3 miles)

AMENITIES

- Paths
- Open Space

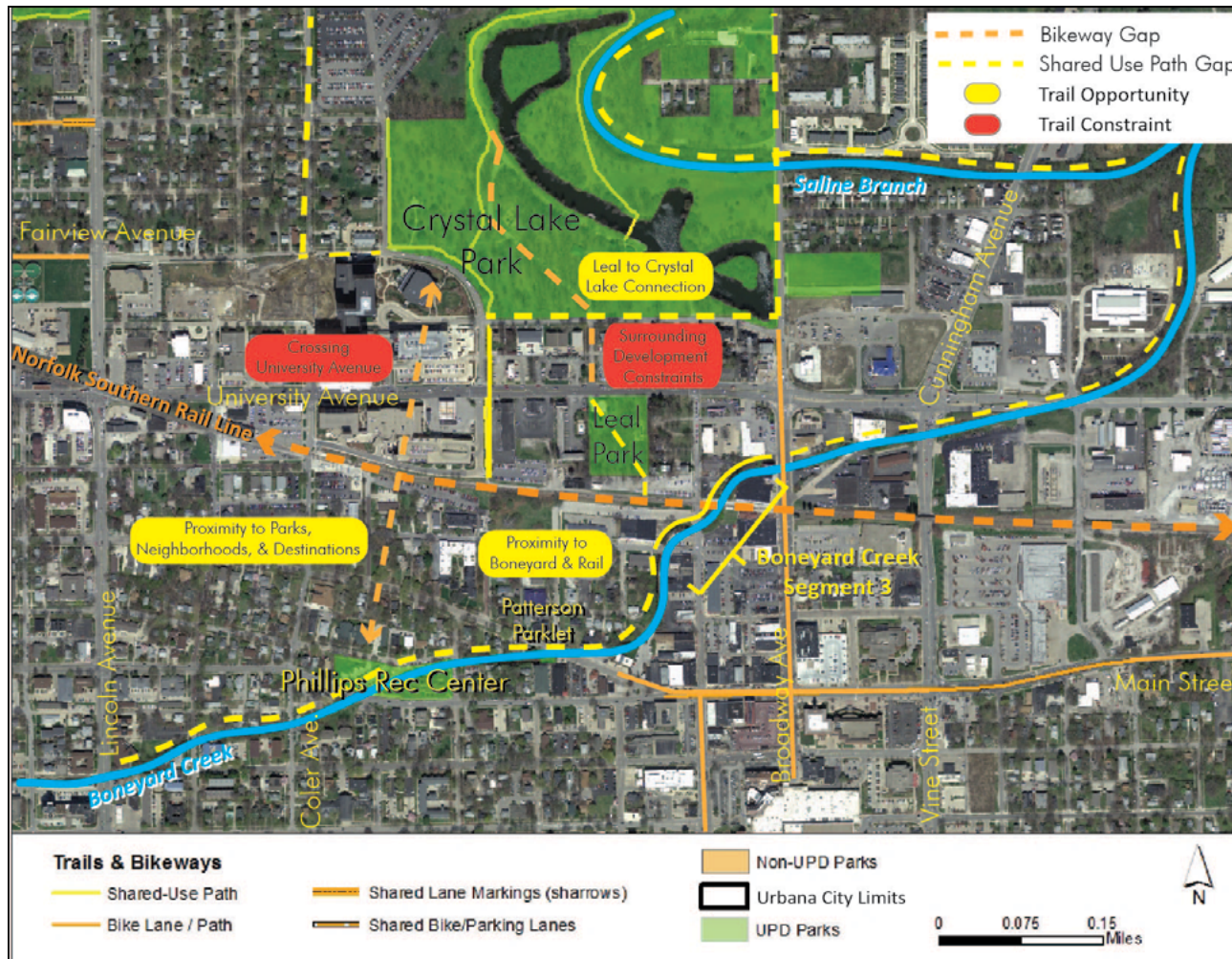


Lighted trail leading to a gazebo, Leal Park.



University Avenue bordering Leal Park to the north.





OPPORTUNITIES

Proximity to Parks, Neighborhoods, & Destinations: Leal Park is located within a quarter-mile walking distance from many nearby residential neighborhoods, downtown Urbana, and UPD facilities including Crystal Lake Park, Phillips Recreation Center, and Patterson Parklet.

Proximity to Boneyard & Rail: Trail development along the Norfolk Southern rail line and Boneyard Creek has the potential to be both a local and regional amenity, bringing visitors from further away to Leal Park while offering a connection to other Urbana Park District facilities situated along these areas including Phillips Recreation Center,

Patterson Parklet, Chief Shemauger Park, the Hickory Street Site, Judge Webber Park, and Weaver Park. Segment 3 from the Boneyard Creek Master Plan is now built and provides trail facilities running near Leal Park along the creek from Griggs Street to Broadway Avenue.

Leal to Crystal Lake Connection: Leal Park is situated between the Carle main campus, Crystal Lake Park, and Downtown Urbana. A trail and bikeway connection using the Norfolk Southern rail line, widening the existing path through Leal Park, a potential protected crossing of University Avenue at Central Avenue, a potential bike boulevard on Central Avenue, sidepath on Park Street, and shared use of the Crystal Lake Park loop road by pedestrians, bicyclists, and vehicles would connect many destinations in a small area.

CONSTRAINTS

Crossing University Avenue: Leal Park is bordered to the north by University Avenue (US 45/150), a five lane arterial, presenting a difficult crossing for visitors. All options for a safe crossing should be considered to ensure an adequate connection for pedestrians and cyclists to this area, working with the City of Urbana and IDOT; whether that be at Central Avenue, or existing stoplights at Broadway Avenue, Race Street, and/or McCullough Street.

Surrounding Development Constraints: Leal Park does not share any contiguous boundary with residential neighborhoods, with the exception of sparse residential development to the east. The rest of development surrounding Leal Park is commercial, with insufficient right-of-way along University Avenue to widen sidewalks to trails. This arrangement underscores the need for adequate trail facilities leading to this area, to allow people to access Leal Park on foot and bike – specifically along the Norfolk Southern rail line and Boneyard Creek.

4.20 PHILLIPS RECREATION CENTER

Area	Location	Type
2 acres	505 West Stoughton Street	Special Use Facility

KEY ELEMENTS

- Bench (4)
- Drinking Fountains (1)
- Lighting (9)
- Trail Signs (3)
- Trash Cans (2)
- Paved Trails (0.36 miles)

AMENITIES

- Accessible Areas
- Recreational Areas
- Open Space
- Parking
- Pavilions
- Playgrounds
- Restrooms



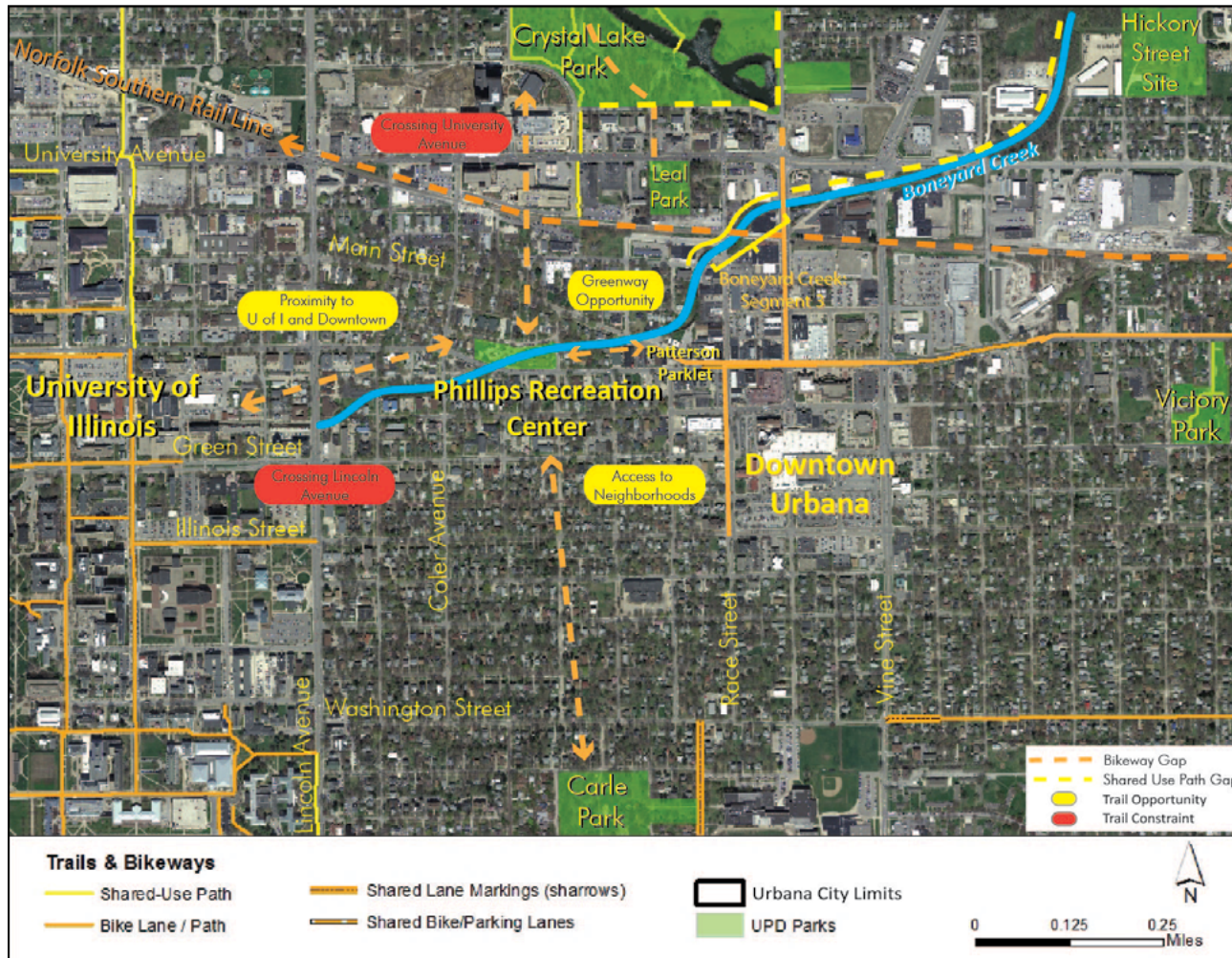
Phillips Recreation Center front entrance.



Bicycle parking near Stoughton Street, Phillips Recreation Center.



A view of Phillips Recreation Center (north side).



OPPORTUNITIES

Greenway Opportunity: Park, trail and natural area development along the Boneyard Creek would connect Phillips Recreation Center to the University of Illinois and several UPD facilities including Patterson Parklet, Chief Shemauger Park, Leal Park, Judge Webber Park, and the Hickory Street Site as well as producing a regional connection to the northeast. Segment 3 from the Boneyard Creek Master Plan is currently under construction and will provide trail facilities running toward Phillips Recreation Center along the creek from Griggs Street to Broadway Avenue.

Access to Neighborhoods: Phillips Recreation Center is accessible to residential neighborhoods from all directions. Likewise, future bicycle paths will offer cycling connections to the University of Illinois, Downtown Urbana, and nearby UPD parks including Carle Park, King Park, Crystal Lake Park, Leal Park, and Victory Park.

CONSTRAINTS

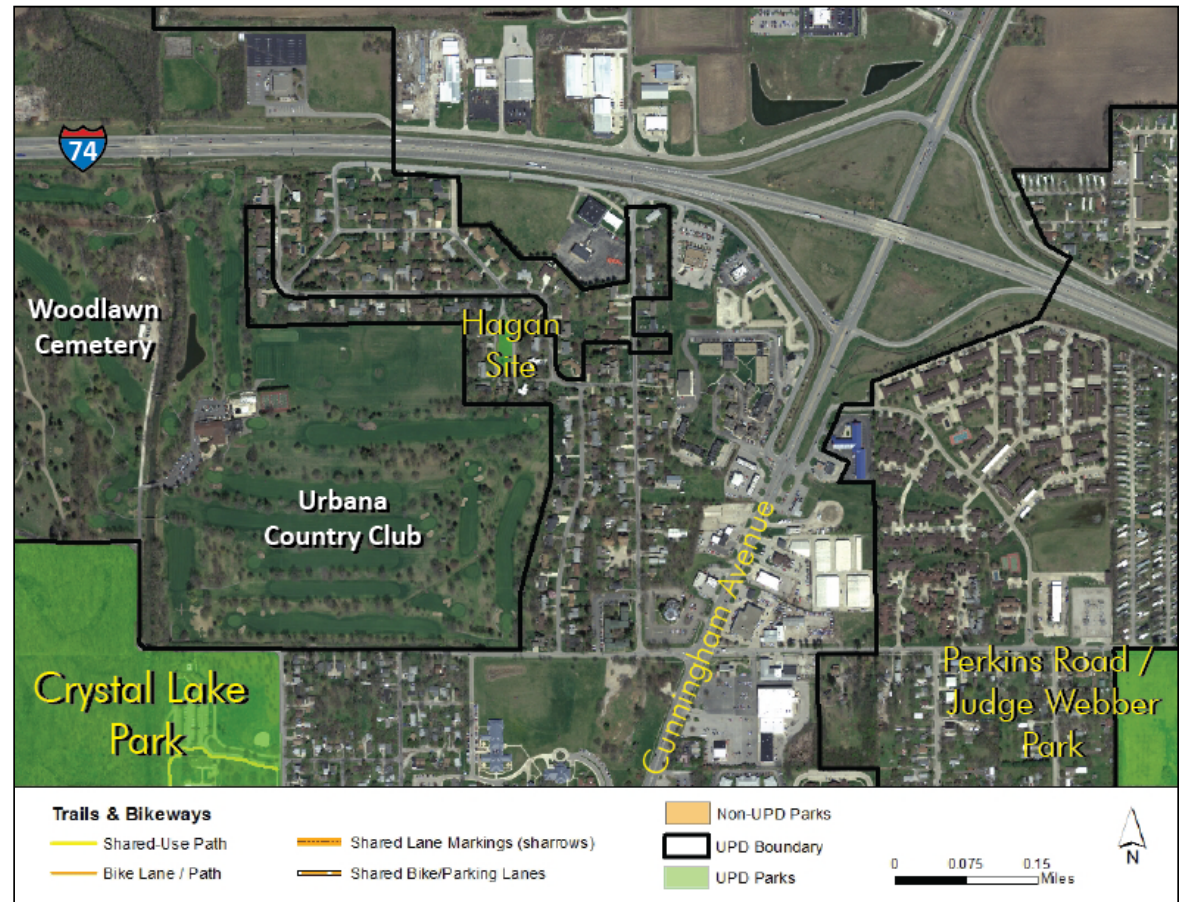
Crossing Lincoln and University: Crossing Lincoln Avenue and University Avenue may present increased difficulty for some pedestrians and cyclists. All options for a safe crossing should be continually evaluated to ensure an adequate connection between areas separated by these arterial streets and Phillips Recreation Center.

4.21 HAGAN SITE

Area	Location	Type
1 acre	Hagan Boulevard and GH Baker Drive	Special Use Facility

KEY ELEMENTS

- Urbana Park District maintenance agreement



4.22 SUNNYCREST TOT LOT

Area 1 acre	Location Sunnycrest Court	Type Special Use Facility
-----------------------	-------------------------------------	-------------------------------------

KEY ELEMENTS

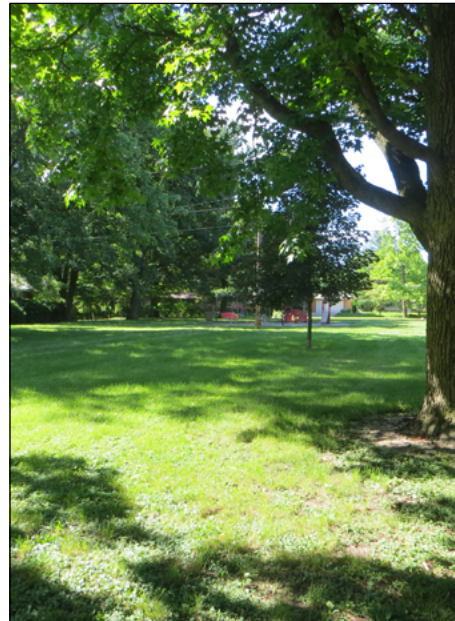
- Trash Can (1)

AMENITIES

- Playground
- Open Space



North entrance, Sunnycrest Tot Lot.



Sitting areas, open space, and playground (far center), Sunnycrest Tot Lot.





OPPORTUNITIES

Proximity to Parks, Neighborhoods: Sunnycrest Tot Lot is bordered by residential neighborhoods and is located within a quarter-mile walking distance from UPD facilities including Blair Park and Crestview Park.

4.23 PATTERSON PARKLET

Area	Location	Type
<0.5 acres	300 Block of West Main Street	Special Use Facility

KEY ELEMENTS

- Benches (2)
- Paved Trails (0.02 miles)

AMENITIES

- Sitting Area

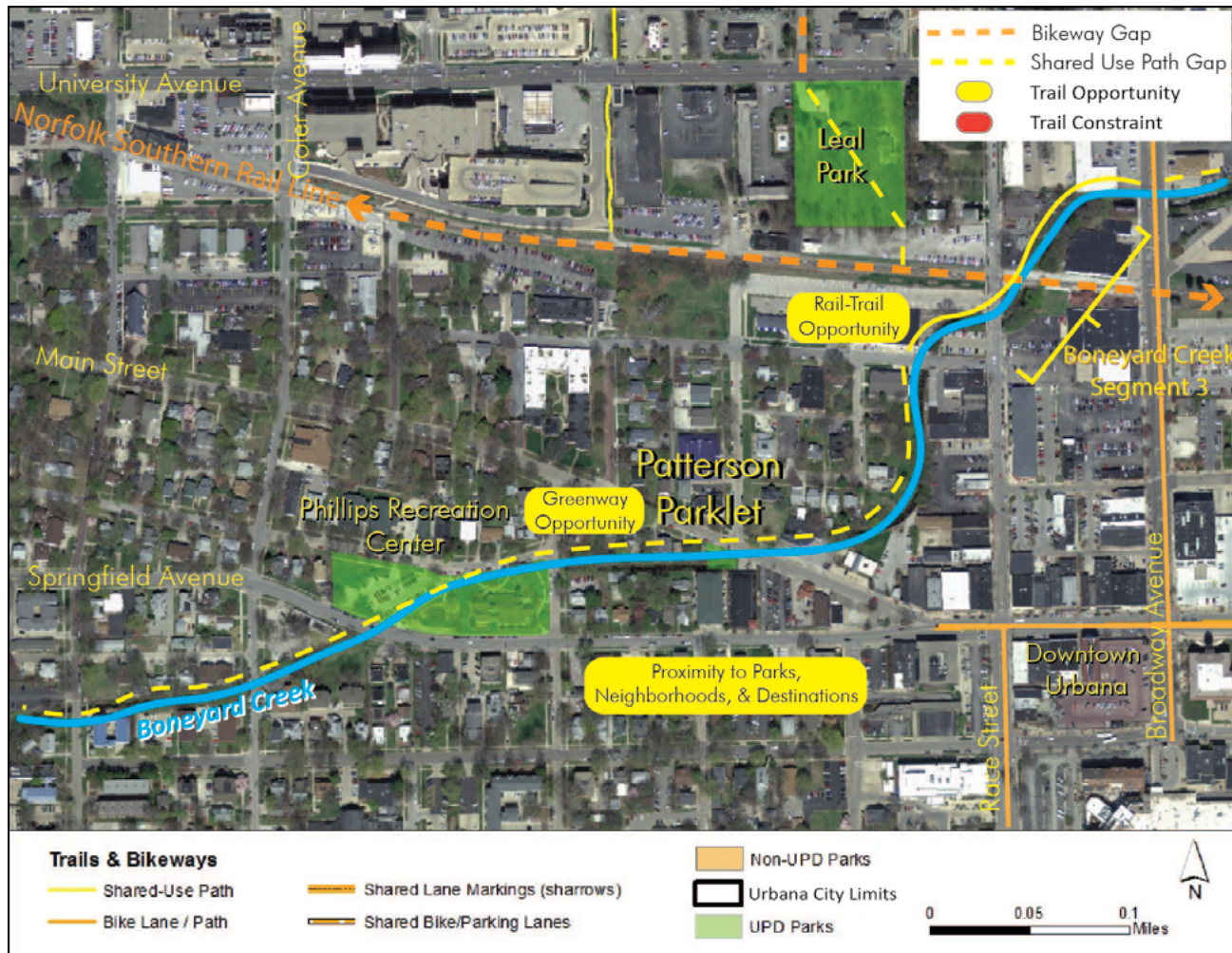


Looking south at Patterson Parklet.



Sitting areas at Patterson parklet.





OPPORTUNITIES

Proximity to Parks, Neighborhoods, & Destinations: Patterson Parklet is bordered by nearby residential neighborhoods, Downtown Urbana, and Phillips Recreation Center.

Greenway Opportunity: The Boneyard Creek intersects with several UPD facilities including Patterson Parklet, Judge Webber Park, Chief Shemauger Park, the Hickory Street Site, and Phillips Recreation Center. Trail development along this area would connect all of these facilities.

Rail-Trail Opportunity: Trail development along the Norfolk Southern rail line stands to be both a local and regional amenity, bringing visitors within a block and a half of Patterson Parklet, while offering a connection to other Urbana Park District facilities situated along these areas including Chief Shemauger Park, the Hickory Street Site, Judge Webber Park, Leal Park and Weaver Park.

4.24 BINKERD'S GROVE

Area	Location	Type
4 acres	Perkins Road and High Cross Road	Natural Area

KEY ELEMENTS

- Private Residence

