



## **Appendix 1:**

### **Public Workshop Series #1 Results**





Non-mapped comments

## Active Choices: Greenways & Trails Plan Update Results of Public Workshop Series #1: November 2012

**Pages 1-8** compiles all comments received between November 2012 and January 2013 via comment cards and phone calls from people who were not able to attend the workshops. **Pages 9-16** compiles all comments marked on group and individual maps at the November 2012 workshops. **Pages 17-26** compiles all the public outreach methods and advertisements for the November 2012 workshops.

### Participation

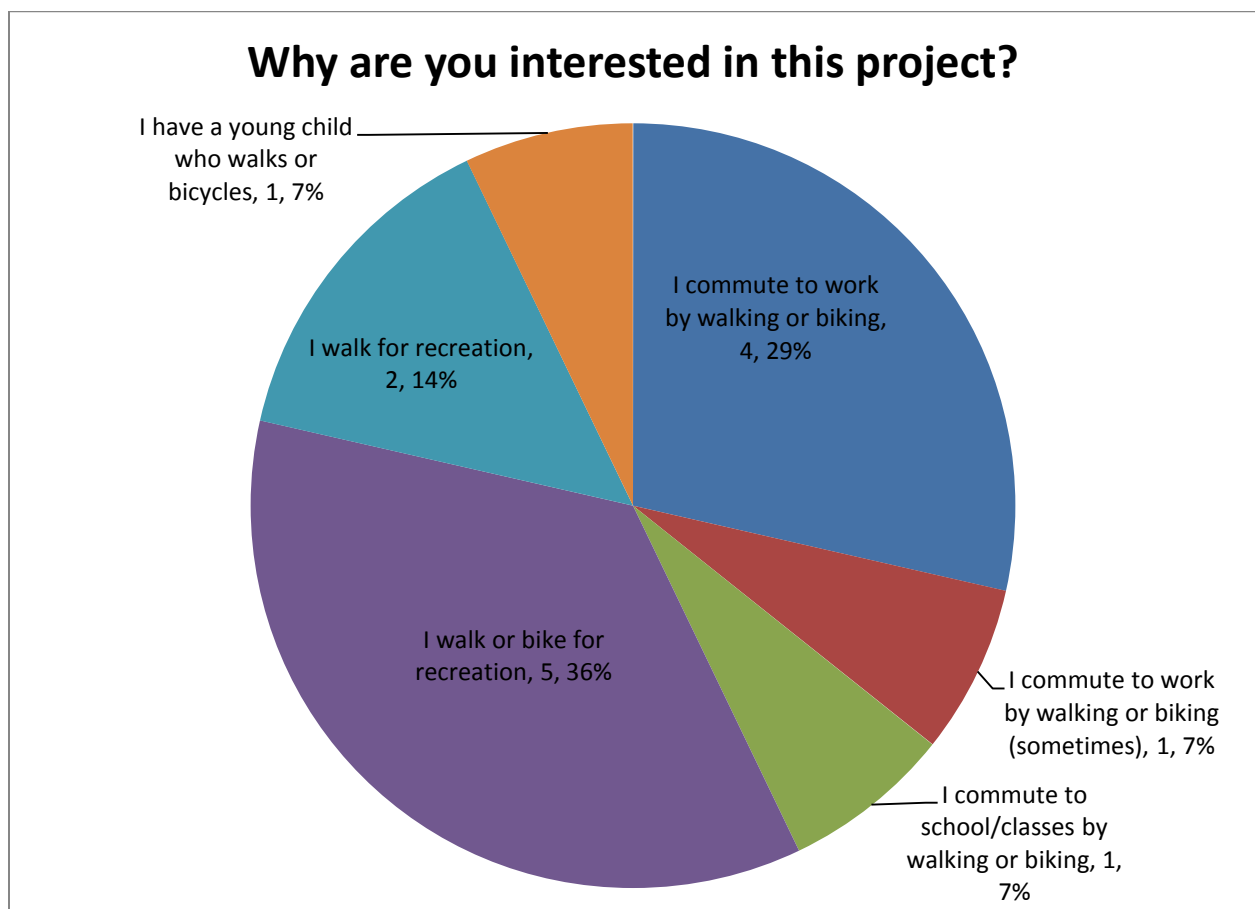
34 people attended the first series of Active Choices workshops:

- 25 at Illinois Terminal in Champaign-Urbana
- 9 at Lake of the Woods in Mahomet

Input was also received from the St. Joseph Comprehensive Plan Update Workshop.

### Interest

When asked why participants were interested in the Greenways & Trails Plan update, half use active transportation for recreation, while another 43% use active transportation for commuting.







## *Non-mapped comments*

### **Destinations**

The following lists the destinations that participants want to gain bike and pedestrian access to or between.

- **Champaign**
  - Lincolnshire Fields subdivision, west of I-57
  - Parkland College
- **Mahomet**
  - Lake of the Woods Bike Trail
  - Spring Lake subdivision to Mahomet-Seymour High School
  - Thornewood subdivision to Central Mahomet
- **Savoy**
  - First Street corridor:
    - Prairie Fields subdivision
    - The Place at 117 apartments (First & Curtis)
    - The Village at Colbert Place
- **St. Joseph**
  - Kickapoo Rail-Trail corridor to Urbana and Danville
  - Salt Fork River
  - Schools
  - St. Joseph Wetland
- **Urbana**
  - Boneyard Creek from Springfield/Main split to Lincoln Avenue
  - Cunningham Avenue (US 45) corridor
    - Airport Road
    - Downtown Urbana
    - Farm & Fleet
    - Kerr Avenue
    - O'Brien Auto Park
  - Kickapoo Rail-Trail corridor to Danville
  - Rails-to-Trails corridor from Carle Hospital to the Gateway Shoppes at Five Points

### **Barriers**

The following lists barriers preventing participants from bicycling or walking to destinations they wish to access.

- **Champaign**
  - Interstates
    - I-57, especially at Kirby Avenue
    - I-72, especially at Staley Road
- **Mahomet**
  - US 150 between Spring Lake subdivision and Mahomet-Seymour High School





## Non-mapped comments

### Comments

The following lists all comments collected by subject, with subject tallies and geographic areas also listed.

#### Key:

Comment listed under multiple subjects

SUBJECT/Comment	Tally/Area
<b>DESTINATIONS</b>	<b>16</b>
Look at the Trail/Greenway systems in larger context, i.e. at a minimum surrounding counties	Central Illinois
Lives on northwest side of Lincolnshire Fields subdivision, far side of I-57.	Champaign
Would like to have a system that is comprehensive & provides for use of bicycling as a mode of transportation with more bike paths and trails. Designation of routes to bicycle to forest preserves with wayfinding. This would also be good for economic development as demonstrated by spin-off development along bike trails.	County
Bicycle and pedestrian access is needed along IL 47 to connect the center of Mahomet to the Thornewood Subdivision to the north. This will connect many areas to the Lake of the Woods bike trail.	Mahomet
Building a bike path from Spring Lake subdivision to Mahomet-Seymour High School would shorten the distance quite a bit	Mahomet
Lives in Spring Lake subdivision, which is west of River Bend Forest Preserve, south of US 150 (located about 4 miles west of Mahomet). There are 74 households in the Spring Lake subdivision.	Mahomet
Many Spring Lake residents have school age children who ride their bikes to Mahomet-Seymour High School (MSHS), but the only way to get there is to ride on US 150, which has no shoulder and a 65 mph speed limit. Spring Lake residents want a safe passage to MSHS besides US 150.	Mahomet
Savoy has added significant student population with two apartment complexes. Additional population was added with the completion of Prairie Fields and other new subdivisions south of Old Church Road.	Savoy
Trail suggestions: RR trails, Salt Fork trail, bike trails, trail to connect wetlands to Village, rails-to-trails, bike facilities near schools.	St. Joseph
Safety of pedestrians walking from O'Briens and Farm & Fleet along Cunningham Ave. south to Kerr.	Urbana
It takes too long to travel by bus from downtown Urbana to Parkland College. Very slow route. Can't there be a more direct route - not passing through downtown Champaign - at least once an hour? This would serve the community attending Parkland. North on Lincoln, west on Bradley.	Urbana, Champaign





### Non-mapped comments

Support trail development along east-west rail line from Urbana to Danville. Develop it along Griggs Street to connect Carle to Five Points Gateway. Include extension of Boneyard from Springfield/Main St. west to Lincoln along Boneyard Creek. Connect Airport Road to Cunningham all the way into downtown. Sidepaths? Shared Sidewalks?	Urbana, County
Providing bicycle infrastructure for all levels of bicyclists that create a comprehensive system to major destinations.	
Providing safe and connected sidewalks & crosswalks that provide access to daily needs and transit.	
<b>Facilities</b>	<b>2</b>
Suggestions for open space features include walking trails, basketball courts, a soccer field and swimming pool. Desire for a rec center for children in the winter. Suggestion to coordinate schedule with schools and open up gyms at night for other uses.	St. Joseph
There are many desired recreational facilities such as a swimming pool (look to Monticello for example), more sport courts and fields, using the ponds as recreational areas (paddleboats, fishing), and some form of open gym for use during the winter.	St. Joseph

<b>MODES</b>	<b>10</b>
<b>Bicycles</b>	<b>3</b>
Would like to have a system that is comprehensive & provides for use of bicycling as a mode of transportation with more bike paths and trails. Designation of routes to bicycle to forest preserves with wayfinding. This would also be good for economic development as demonstrated by spin-off development along bike trails.	County
Providing bicycle infrastructure for all levels of bicyclists that create a comprehensive system to major destinations.	
We need physically separate bicycle roadways.	
<b>Multi-Modal</b>	<b>3</b>
Paint bike lanes and crosswalks - the ones on First Street in Champaign south of University Ave. are worn off.	Champaign
Bicycle and pedestrian access is needed along IL 47 to connect the center of Mahomet to the Thornewood Subdivision to the north. This will connect many areas to the Lake of the Woods bike trail.	Mahomet
Providing safe and connected sidewalks & crosswalks that provide access to daily needs and transit.	
<b>Pedestrians</b>	<b>3</b>
More sidewalks are strongly desired	St. Joseph
Safety of pedestrians walking from O'Briens and Farm & Fleet south to Kerr.	Urbana
Enforce the law to have cars stop when pedestrians step off the curb into crosswalks.	





### Non-mapped comments

<b>Transit</b>	<b>1</b>
It takes too long to travel by bus from downtown Urbana to Parkland College. Very slow route. Can't there be a more direct route - not passing through downtown Champaign - at least once an hour? This would serve the community attending Parkland. North on Lincoln, west on Bradley.	Urbana, Champaign

<b>ROUTES</b>	<b>10</b>
Would like to have a system that is comprehensive & provides for use of bicycling as a mode of transportation with more bike paths and trails. Designation of routes to bicycle to forest preserves with wayfinding. This would also be good for economic development as demonstrated by spin-off development along bike trails.	County
Building a bike path from Spring Lake subdivision to Mahomet-Seymour High School would shorten the distance quite a bit	Mahomet
First Street Corridor	Savoy
Fifth Street has many kids walking and biking to school - need safety measures and/or bike routes.	St. Joseph
Trail suggestions: RR trails, Salt Fork trail, bike trails, trail to connect wetlands to Village, rails-to-trails, bike facilities near schools.	St. Joseph
Safety of pedestrians walking from O'Briens and Farm & Fleet along Cunningham Ave. south to Kerr.	Urbana
Support trail development along east-west rail line from Urbana to Danville. Develop it along Griggs Street to connect Carle to Five Points Gateway. Include extension of Boneyard from Springfield/Main St. west to Lincoln along Boneyard Creek. Connect Airport Road to Cunningham all the way into downtown. Sidepaths? Shared Sidewalks?	Urbana, County
<b>Near-Term Construction</b>	<b>3</b>
City projects under way at the moment and proposed and bidded should probably be restated in the plans somehow - or the maps are going to be outdated very soon - e.g. Main Street in Urbana, Boneyard, Broadway, Washington, and Race Streets.	Urbana
Please include under-construction projects on the map.	Urbana
Please include Urbana facilities under construction - Boneyard Creek, Main Street bike lanes, Washington Street bike lanes, and SRTS bike lanes and routes in Plan.	Urbana

<b>NETWORK</b>	<b>9</b>
Would like to have a system that is comprehensive & provides for use of bicycling as a mode of transportation with more bike paths and trails. Designation of routes to bicycle to forest preserves with wayfinding. This would also be good for economic development as demonstrated by spin-off development along bike trails.	County





### Non-mapped comments

Campus degraded infrastructure - it looks more connected on the map than it feels in person.	University District
<b>Connectivity</b>	<b>6</b>
Since this plan is the county-wide plan, let's focus on the large-scale regional connections. We have lots of nice walking and biking segments, but they aren't stitched together into a usable network.	County
Bicycle and pedestrian access is needed along IL 47 to connect the center of Mahomet to the Thornewood Subdivision to the north. This will connect many areas to the Lake of the Woods bike trail.	Mahomet
Mahomet Village Planner (Bob Mahrt) is supportive of a bike connection to the rest of the community	Mahomet
Campus degraded infrastructure - it looks more connected on the map than it feels in person.	University District
Hole in West Urbana on Trail Connectivity Map - is this a mistake?	Urbana
Interest in connecting edges of community to downtown, especially along Lincoln and Cunningham Avenues	Urbana
<b>Accessibility</b>	<b>1</b>
Feels cut off from walking trails and access to the rest of Champaign-Urbana because of narrow bridges on Kirby Ave. over I-57 & Staley Rd. over I-72.	Champaign

<b>INFRASTRUCTURE</b>	<b>8</b>
We need physically separate bicycle roadways.	Champaign
County roads are woefully unsafe for bicycles (can we start with rails-to-trails)?	County
Spring Lake itself is a shallow but healthy lake, and Spring Lake Road has a bridge over it	Mahomet
More sidewalks are strongly desired	St. Joseph
Campus degraded infrastructure - it looks more connected on the map than it feels in person.	University District
Providing bicycle infrastructure for all levels of bicyclists that create a comprehensive system to major destinations.	
Providing safe and connected sidewalks & crosswalks that provide access to daily needs and transit.	
<b>Maintenance</b>	<b>1</b>
Paint bike lanes and crosswalks - the ones on First Street in Champaign south of University Ave. are worn off.	Champaign

<b>TREATMENT</b>	<b>8</b>
County roads are woefully unsafe for bicycles (can we start with rails-to-trails)?	County
Would like to have a system that is comprehensive & provides for use of bicycling as a mode of transportation with more bike paths and trails. Designation of routes to bicycle to forest preserves with wayfinding. This would also be good for economic development as demonstrated by spin-off development along bike trails.	County





### Non-mapped comments

Another alternative is to build a shoulder on US 150 from Spring Lake subdivision to Mahomet-Seymour High School, since there is only soft grass on the road edge right now	Mahomet
Participants are satisfied with amount of parks, but desire more trails and pathways.	St. Joseph
Respondents expressed desire for sidewalks	St. Joseph
Support trail development along east-west rail line from Urbana to Danville. Develop it along Griggs Street to connect Carle to Five Points Gateway. Include extension of Boneyard from Springfield/Main St. west to Lincoln along Boneyard Creek. Connect Airport Road to Cunningham all the way into downtown. Sidepaths? Shared Sidewalks?	Urbana, County
<b>Signage</b>	<b>2</b>
Would like to have a system that is comprehensive & provides for use of bicycling as a mode of transportation with more bike paths and trails. Designation of routes to bicycle to forest preserves with wayfinding. This would also be good for economic development as demonstrated by spin-off development along bike trails.	County
Wayfinding/bike markers	

<b>BARRIERS</b>	<b>6</b>
Feels cut off from walking trails and access to the rest of Champaign-Urbana because of narrow bridges on Kirby Ave. over I-57 & Staley Rd. over I-72.	Champaign
Has a friend who moved from the west side of I-57 to east side just to be able to ride her bike	Champaign
Knows that the Kirby Ave. bridge over I-57 was just repaired, and that a bike/ped bridge near Curtis Rd. is planned, but Curtis Rd. is another 1.5 miles south - doesn't help her family.	Champaign
Not safe to cross Interstates as a bicyclist or pedestrian	Champaign
Would be great for pedestrians and bicyclists to be able to cross the I-57/Kirby and I-72/Staley bridges	Champaign
Many Spring Lake residents have school age children who ride their bikes to Mahomet-Seymour High School (MSHS), but the only way to get there is to ride on US 150, which has no shoulder and a 65 mph speed limit. Spring Lake residents want a safe passage to MSHS besides US 150.	Mahomet

<b>WORKSHOP</b>	<b>4</b>
Good data & existing conditions presentation. It is helpful to the public to really work to use language that is commonly understood. For example, "Block Group" was mentioned - most people do not know what this is.	
Just for the next workshops, have some way for people to say "I Agree" with others' suggestions on the maps - stickers or stars or check marks, etc.	
Nice presentation. Liked the opportunity to dream out ideas on the maps.	
No additional comments - Thank you!	





*Non-mapped comments*

<b>IMPLEMENTATION</b>	<b>3</b>
Spoke to Spring Lake Homeowner's Association, and they are willing to put money behind building a bike path to Mahomet-Seymour High School	Mahomet
I hope we can increase the emphasis on fundable, feasible projects that we can use grants and partnerships to achieve.	
Most concerned about implementation. Afraid this might sit on a shelf and the plan won't result in implementation.	

<b>USERS</b>	<b>3</b>
Would like to have a system that is comprehensive & provides for use of bicycling as a mode of transportation with more bike paths and trails. Designation of routes to bicycle to forest preserves with wayfinding. This would also be good for economic development as demonstrated by spin-off development along bike trails.	County
Has three kids who go to school in Mahomet (1 in High School, 2 in Grade School)	Mahomet
Majority of St. Joe Comprehensive Plan survey respondents walk or bike somewhere in the community on a regular basis.	St. Joseph

<b>E's</b>	<b>3</b>
<b><i>Economic Development</i></b>	<b>1</b>
Would like to have a system that is comprehensive & provides for use of bicycling as a mode of transportation with more bike paths and trails. Designation of routes to bicycle to forest preserves with wayfinding. This would also be good for economic development as demonstrated by spin-off development along bike trails.	County
<b><i>Education</i></b>	<b>1</b>
More education efforts for sharing the road.	
<b><i>Enforcement</i></b>	<b>1</b>
Enforce the law to have cars stop when pedestrians step off the curb into crosswalks.	Champaign

<b>SAFETY</b>	<b>2</b>
It is a dangerous situation for kids who want to bike from Spring Lake subdivision to Mahomet-Seymour High School	Mahomet
I would like to feel safer on my bicycle	

<b>OTHER</b>	<b>1</b>
Most of the land between Spring Lake and the village limits is owned by Russell Taylor of Re/Max real estate	Mahomet





## *Mapped comments*

### **Mapped Comments**

**Pages 10-17** compiles all comments marked on group and individual maps at the November 2012 workshops.

#### **November 15, 2012: Illinois Terminal, Champaign-Urbana**

- Champaign Group Map
- University District Group Map
- Urbana Group Map
- Savoy Group Map
- Champaign County Group Map

#### **November 27, 2012: Lake of the Woods, Mahomet**

- Champaign County Group Map
- Mahomet Group & Individual Maps

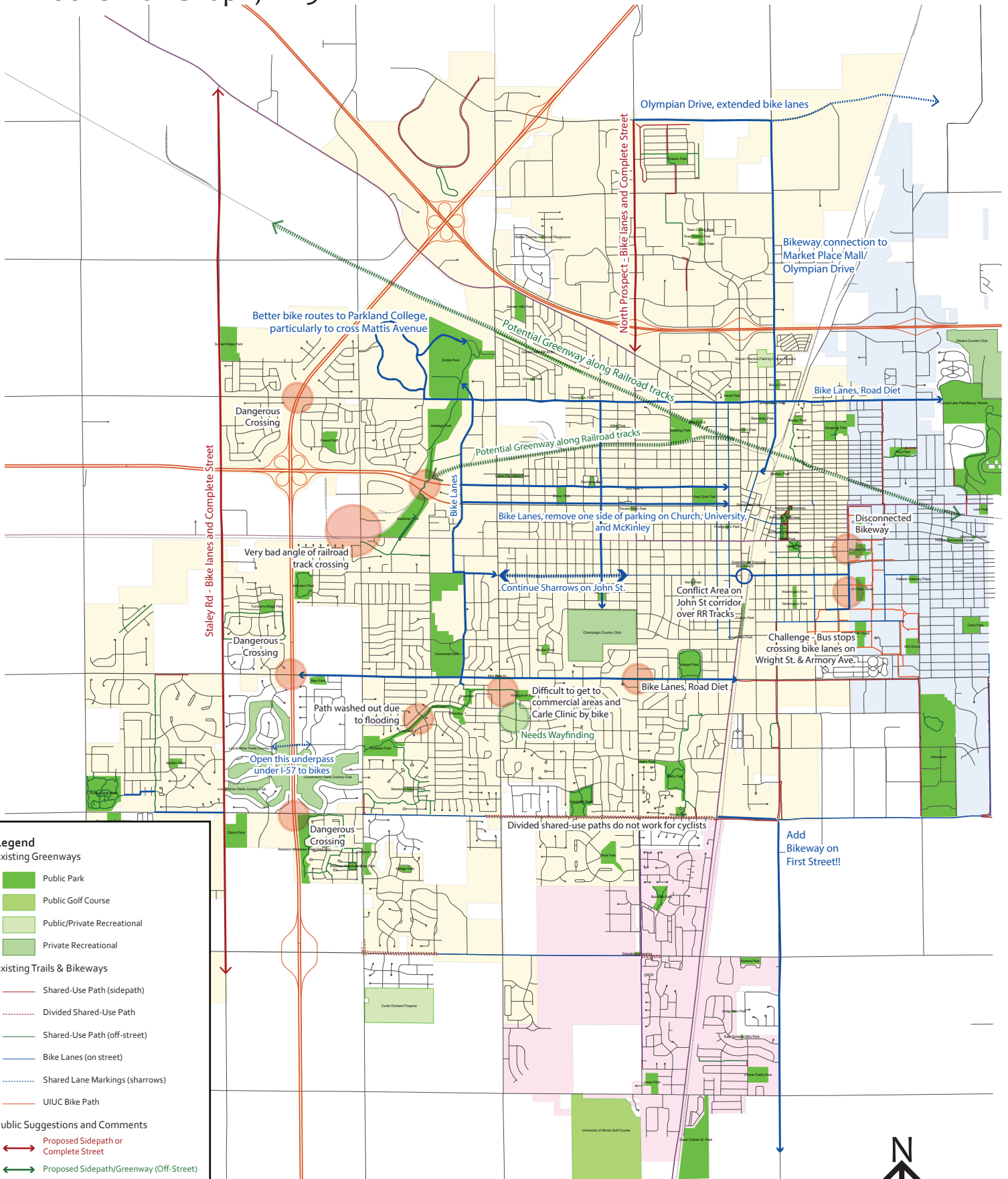
#### **November 29, 2012: St. Joseph Comprehensive Plan Public Workshop**

- Desired Pathways in St. Joseph



# Champaign Group Map

Public Workshop 1, 11-15-12

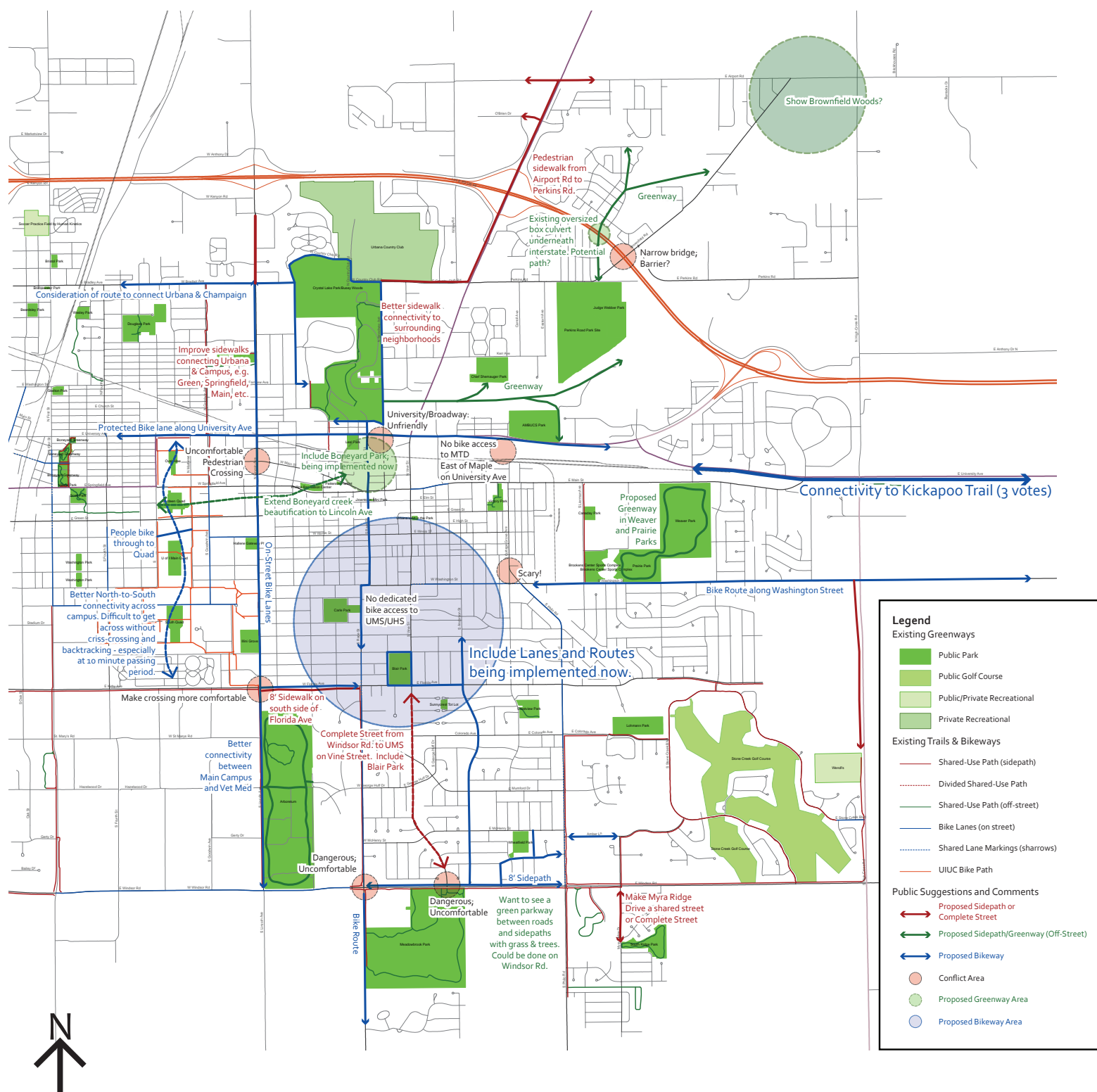




[illegible]



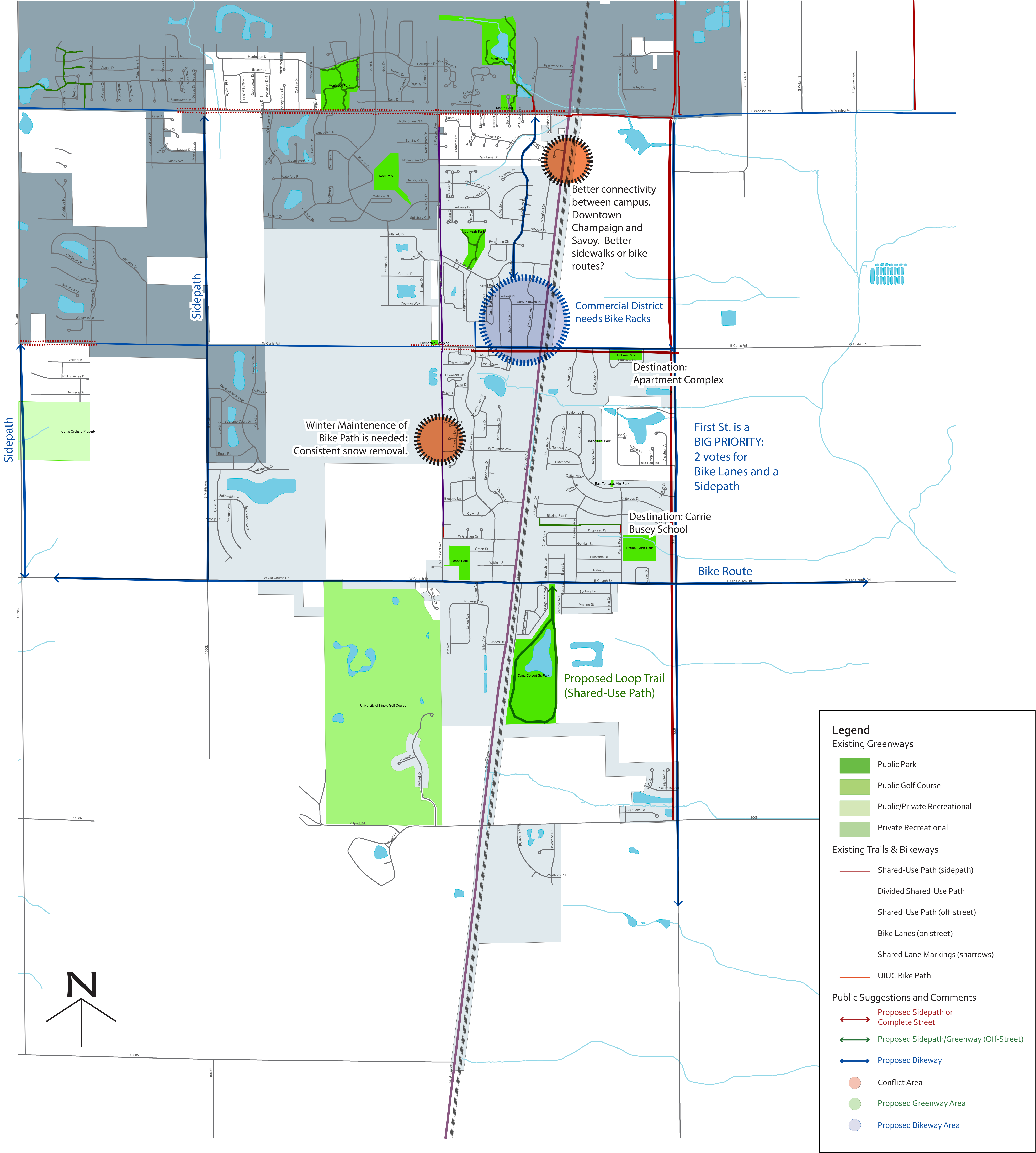
## Public Workshop 1, 11-15-12





# Savoy Group Map

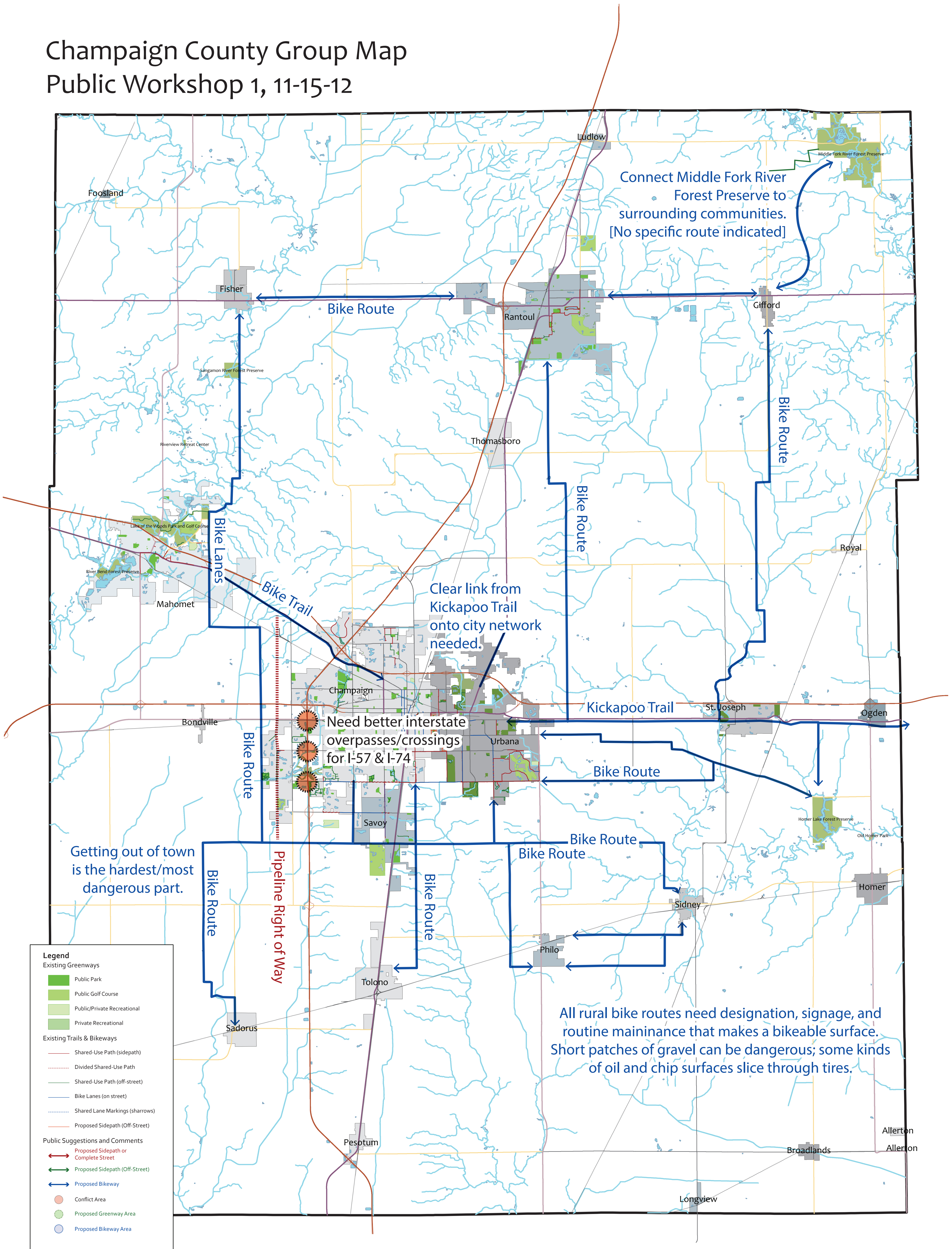
## Public Workshop 1, 11-15-12





# Champaign County Group Map

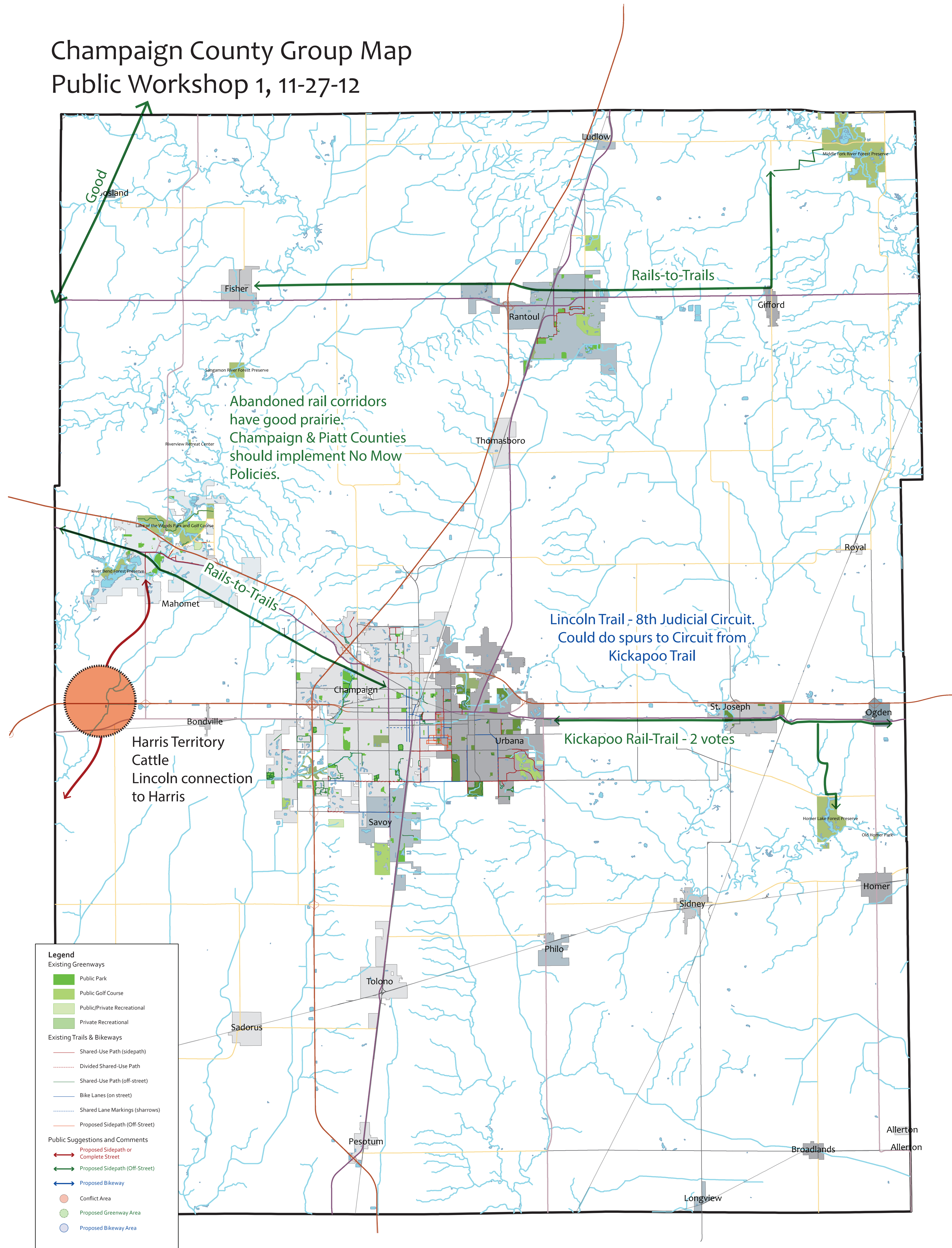
## Public Workshop 1, 11-15-12





# Champaign County Group Map

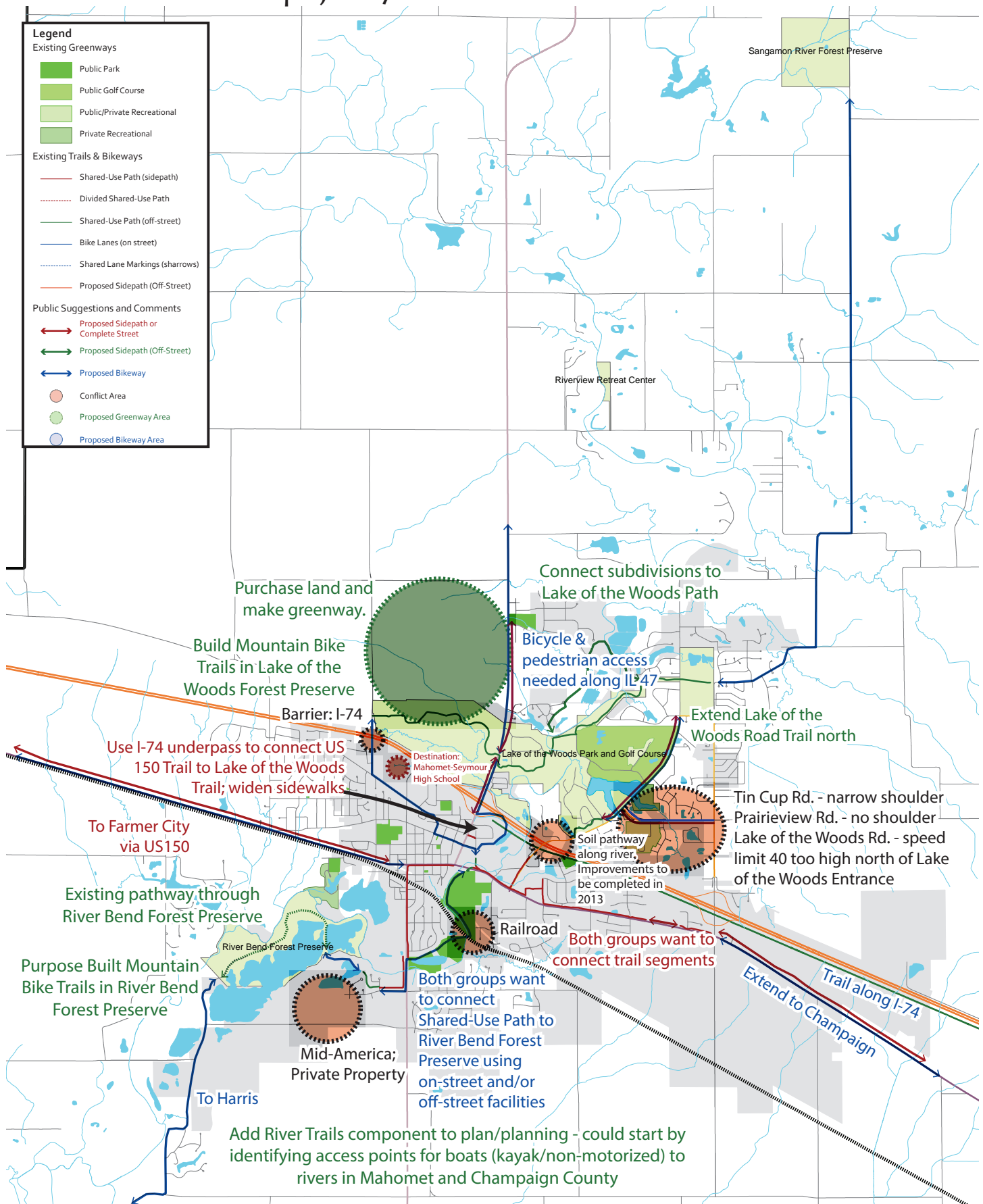
## Public Workshop 1, 11-27-12





# Mahomet Group & Individual Maps

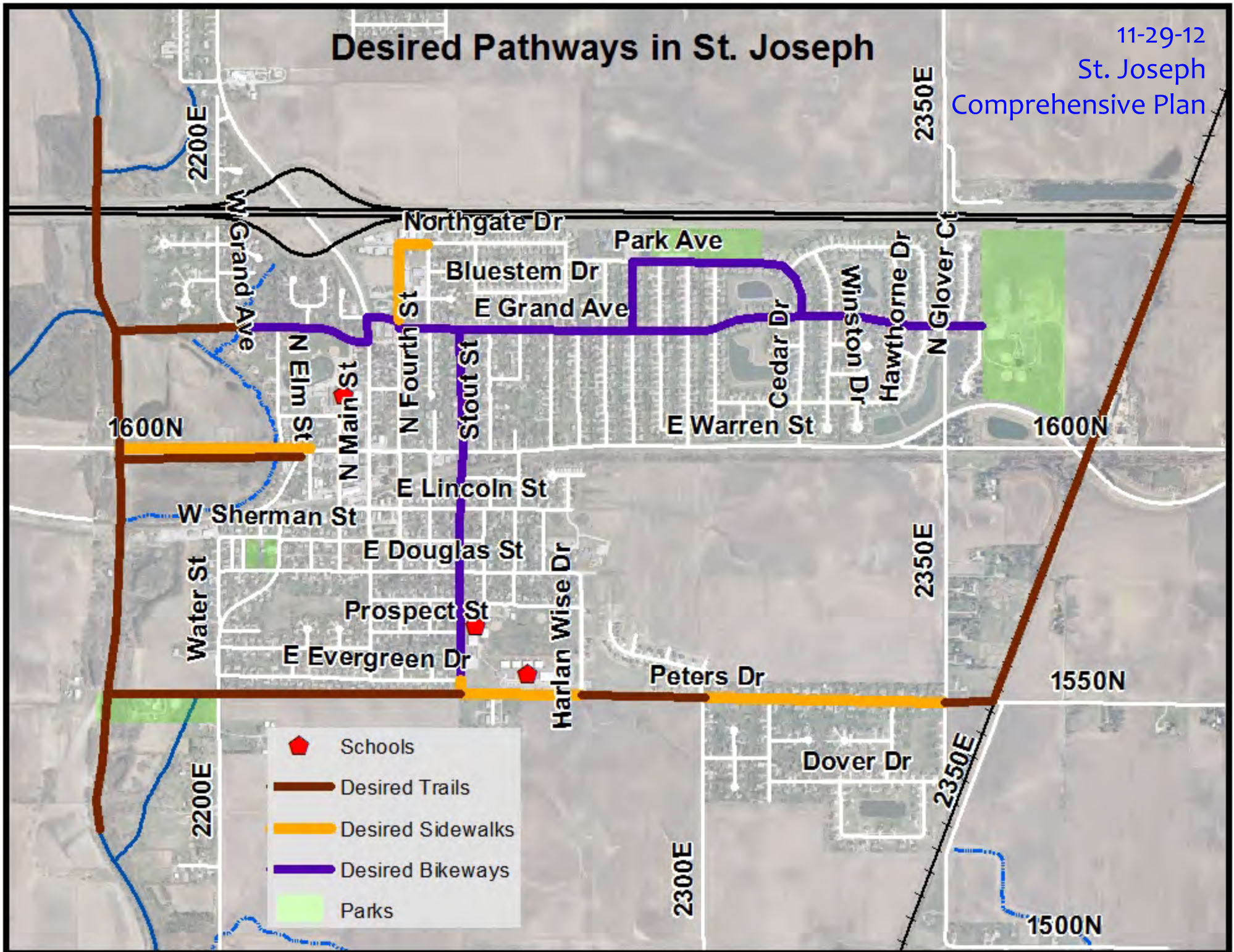
Public Workshop 1, 11-27-12





# Desired Pathways in St. Joseph

11-29-12  
St. Joseph  
Comprehensive Plan







## Outreach

### Outreach

The November 2012 workshops were advertised in the following places:

1. News-Gazette legal ad
2. News-Gazette retail ad
3. Mahomet Citizen newspaper retail ad
4. CCRPC website
  - a. CCRPC Homepage
  - b. Planning & Community Development News webpage
  - c. CUUATS Homepage
  - d. GT News & Meetings webpage
5. CUUATS Facebook page
6. Meeting flyers posted around town
  - a. Champaign
    - i. Hessel Park
    - ii. West Side Park
    - iii. Café Kopi
    - iv. Aroma
    - v. Quality
    - vi. Boltini
    - vii. One Main Plaza
    - viii. Illinois Terminal
    - ix. Art Theater
    - x. Evolve Fitness Club
    - xi. Studio Helix
    - xii. Champaign Public Library
    - xiii. Market Place Mall
    - xiv. Champaign Cycle
    - xv. Durst Cycle
    - xvi. Charter Fitness
    - xvii. Fitness Center
    - xviii. Refinery
    - xix. Windsor West apartments
  - b. Urbana
    - i. Lincoln Square
    - ii. Urbana Free Library
    - iii. Bike Project of Urbana-Champaign
    - iv. Charter Fitness
    - v. Meadowbrook Park
    - vi. Crystal Lake Park
    - vii. Bikeworks
    - viii. Durst Cycle
    - ix. Bakers Bikes
    - x. County Market
    - xi. Schnucks
    - xii. One North/South apartments
    - xiii. Town & Country apartments





## *Outreach*

- xiv. Provena Covenant Medical Center
- c. Savoy
  - i. Savoy Recreation Center
- d. University of Illinois campus
  - i. Illini Union
  - ii. Quad
  - iii. Davenport Hall
  - iv. YWCA
  - v. Temple Buell Hall
  - vi. Campus Bike Project
  - vii. Edward Madigan Laboratory
- 7. Champaign County Bikes (CCB) listserv
- 8. Champaign-Urbana Fit Families (CUFF) listserv
- 9. Champaign Government Television (CGTV) slides
- 10. Urbana Public Television (UPTV) slides
- 11. Champaign neighborhood groups email
- 12. Urbana neighborhood listservs
- 13. City of Urbana website
- 14. Urbana Park District email
- 15. Urbana School District distribution
- 16. Thomasboro Grade School
- 17. CUMTD social media



# Champaign-Urbana News-Gazette Advertisements Public Workshop Series #1

Retail Ad  
Sunday, November 11, 2012

## GAZETTE PREMIER SUBSCRIBER CONTEST!

# ENTER TO WIN A FAMILY HOLIDAY PORTRAIT

with one of our award-winning photographers!

must already be a News-Gazette Premier Subscriber  
or one before November 19th to be eligible to enter to win.

to-gazette.com/subscribe/premier for more information on becoming a Premier Subscriber.

### Active Choices: Champaign County Greenways & Trails Plan Public Workshop #1

Join us at our first public forum which  
will be held on Sunday, November 11, 2012  
at 10:00 a.m. at the Champaign County  
Civic Center, 400 S. University Ave., Champaign,  
IL 61821.

This meeting has a structured agenda:  
- Hear about the work that is being done  
- Learn about the planning process  
- Meet & connect with other residents  
- Ask questions & share ideas  
- Find out how to stay involved

Thursday, November 15, 2012  
10:00 a.m. to 12:00 p.m.  
Illinois Terminal, 4th Floor  
45 E. University Ave., Champaign

This meeting has a structured agenda:  
- Hear about the work that is being done  
- Learn about the planning process  
- Meet & connect with other residents  
- Ask questions & share ideas  
- Find out how to stay involved

Thursday, November 15, 2012  
10:00 a.m. to 12:00 p.m.  
Illinois Terminal, 4th Floor  
45 E. University Ave., Champaign

### Active Choices: Champaign County Greenways & Trails Plan Public Workshop #1

Join us at our first public forum which  
will be held on Sunday, November 11, 2012  
at 10:00 a.m. at the Champaign County  
Civic Center, 400 S. University Ave., Champaign,  
IL 61821.

This meeting has a structured agenda:  
- Hear about the work that is being done  
- Learn about the planning process  
- Meet & connect with other residents  
- Ask questions & share ideas  
- Find out how to stay involved

Thursday, November 15, 2012  
10:00 a.m. to 12:00 p.m.  
Illinois Terminal, 4th Floor  
45 E. University Ave., Champaign

Retail Ad  
Wednesday, November 14, 2012

## Command becoming revolving door

By [Name] [Email]

WASHINGTON — As the war in Afghanistan enters its 10th year, the command structure of U.S. forces is being reshuffled. The U.S. military is planning to rotate the command of the 10th Mountain Division, which is currently led by Gen. James McConville, to a new commander in the near future. This rotation is part of a larger effort to ensure that all U.S. military leaders have the opportunity to lead in Afghanistan.

The 10th Mountain Division is one of the most elite units in the U.S. Army. It has been in Afghanistan since 2001, and has been involved in some of the most intense fighting of the war. The division is currently based in Bagram Airfield, north of Kabul.

Gen. McConville has led the division since 2009. He has been instrumental in the division's success in the field. He has been awarded several medals for his service, including the Distinguished Service Medal.

The rotation of the command of the 10th Mountain Division is a sign of the U.S. military's commitment to the war in Afghanistan. It shows that the U.S. military is confident in its ability to lead in the field, and that it is committed to achieving victory.

## Active Choices: Champaign County Greenways & Trails Plan Public Workshop #1

Join us at our first public forum which  
will be held on Sunday, November 11, 2012  
at 10:00 a.m. at the Champaign County  
Civic Center, 400 S. University Ave., Champaign,  
IL 61821.

This meeting has a structured agenda:  
- Hear about the work that is being done  
- Learn about the planning process  
- Meet & connect with other residents  
- Ask questions & share ideas  
- Find out how to stay involved

Thursday, November 15, 2012  
10:00 a.m. to 12:00 p.m.  
Illinois Terminal, 4th Floor  
45 E. University Ave., Champaign

## Active Choices: Champaign County Greenways & Trails Plan Public Workshop #1

Join us at our first public forum which  
will be held on Sunday, November 11, 2012  
at 10:00 a.m. at the Champaign County  
Civic Center, 400 S. University Ave., Champaign,  
IL 61821.

This meeting has a structured agenda:  
- Hear about the work that is being done  
- Learn about the planning process  
- Meet & connect with other residents  
- Ask questions & share ideas  
- Find out how to stay involved

Thursday, November 15, 2012  
10:00 a.m. to 12:00 p.m.  
Illinois Terminal, 4th Floor  
45 E. University Ave., Champaign

Legal Ad  
Wednesday, November 14, 2012

## Public Notices

Public Notice: [Text]

Public Notice: [Text]

Public Notice: [Text]

## Legal Notices

Legal Notice: [Text]

Legal Notice: [Text]

Legal Notice: [Text]

## Public Notices

Public Notice: [Text]

Public Notice: [Text]

Public Notice: [Text]

## Legal Notices

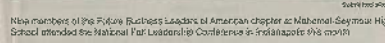
Legal Notice: [Text]

Legal Notice: [Text]

Legal Notice: [Text]



Retail Ad  
Wednesday, November 21, 2012

[illegible]

Students prepare for the National Leadership Conference in Indianapolis this month.

the leadership and the difference just was student life here.

FILED: In the actual and targeted business career and personal success organization that

possesses intellectual behind leadership training. For more information, visit FILED, at [www.illybld.org](http://www.illybld.org)



**SUNSET CHRISTMAS TREE FARM**

- Christmas Tree Truss (375-3161)
- 4 ft. to 22 ft. Quality Christmas Trees
- Special Made Wreaths, Signs and Grave Pictures


**Merry Christmas!**  
*Decorate and Allow Family  
 to see and Appreciate*

Open Fridays, Saturdays,  
 and Sundays  
 Thanksgiving - Christmas  
 9 - 4:30

1417 East 2550 North Road  
 Moorhead, MN 56501  
 218-294-2675





**SHOPPAPOOLZA**  
 Rembrandt Mac Centre • 100 E. Franklin Dr., Rembrandt, N.H.  
 November 25 From 1300 - 5000 p.m.  
**29 VENDORS IN ATTENDANCE**  
 Making 70000 dollars in 1 day is a feat and something to bragging at. ST. Mac was well prepared for the day. Call 603-882-2222



*The Grandest of Events in the State*

**EMERITUS SENIOR LIVING**

Emeritus Senior Living offers a wide range of retirement fee alternatives, living and assisted living. All of our living care is done in a place natural home with the beauty of living. Emeritus Senior Living is experienced in helping you and your family find the right place.



**EMERITUS**  
*senior living*

**Locations Nightly Open**  
 Thurs. Nov. 20th 4pm - 6pm  
 14000 Highway 104  
 2nd Downcross - Grand at 2000  
 St. Mac will be there to help you  
 with your holiday gift shopping  
 call the public

**(217) 328-3150**  
 1700 East Arroyo Lane, Orange

[www.emeritus.com](http://www.emeritus.com)

Thursday, November 22, 2012

[illegible][illegible][illegible]





# ACTIVE CHOICES: Champaign County Greenways & Trails Plan PUBLIC WORKSHOP #1

Join us in our first public forum about walking, bicycling, and the environment to:

- Learn about the planning process
- Map & comment on preferred routes, issues & opportunities
- Find out how to stay involved

Thursday, November 15, 2012  
6:00 - 8:00 p.m.  
Illinois Terminal, 4<sup>th</sup> Floor  
45 E. University Ave., Champaign

Champaign County Regional Planning Commission strives to provide an environment welcoming to all persons regardless of physical or mental challenges, race, gender, or religion. Please call 217-328-3313 to request special accommodations at least 2 business days in advance.

This meeting has a structured agenda.  
Please attend the workshop in its entirety.  
RSVP is requested but not necessary.

To RSVP or for more information:

Gabe Lewis

CCRPC Transportation Planner

[glewis@ccrpc.org](mailto:glewis@ccrpc.org)

328-3313

CHAMPAIGN COUNTY  
**rpc**  
REGIONAL  
PLANNING  
COMMISSION







# OPCIONES ACTIVAS: Condado de Champaign Plan de Vías Verdes & Senderos TALLER PUBLICO #1

Únete a nosotros en nuestro primer foro público acerca de caminar, andar en bicicleta, y el medio ambiente:

- Aprenda acerca del proceso de planificación
- Comente y muestre en un mapa rutas preferidas, problemas y oportunidades
- Encuentre maneras de seguir participando

Jueves, Noviembre 15, 2012  
6:00 - 8:00 p.m.  
Illinois Terminal, 4<sup>th</sup> Piso  
45 E. University Ave., Champaign

La Comisión Regional de Planificación de Champaign County se esfuerza por ofrecer un ambiente acogedor para todas las personas independientemente de retos físicos o mentales, raza, sexo o religión. Por favor llame a 217-328-3313 para solicitar adaptaciones especiales al menos con 2 días hábiles de anticipación.

Esta reunión tiene una agenda estructurada.  
Por favor, asista al taller en su totalidad.  
Reservaciones son solicitadas, pero no necesarias.

Para reservar o si necesita mayor información,  
por favor contacte a:

Rita Morocoima-Black

CCRPC Director de Planificación y Desarrollo de la Comunidad  
rmorocoi@ccrpc.org  
328-3313

CHAMPAIGN COUNTY  
**rpc**  
REGIONAL  
PLANNING  
COMMISSION







# ACTIVE CHOICES: Champaign County Greenways & Trails Plan PUBLIC WORKSHOP #1

Join us in our first public forum about walking, bicycling, and the environment to:

- Learn about the planning process
- Map & comment on preferred routes, issues & opportunities
- Find out how to stay involved

This meeting has a structured agenda.  
Please attend the workshop in its entirety.  
RSVP is requested but not necessary.

To RSVP or for more information:

Gabe Lewis

CCRPC Transportation Planner

[glewis@ccrpc.org](mailto:glewis@ccrpc.org)

328-3313



Champaign County Regional Planning Commission strives to provide an environment welcoming to all persons regardless of physical or mental challenges, race, gender, or religion. Please call 217-328-3313 to request special accommodations at least 2 business days in advance.

CHAMPAIGN COUNTY  
**rpc**  
REGIONAL  
PLANNING  
COMMISSION

Tuesday, November 27, 2012  
6:00 - 8:00 p.m.  
Izzak Walton Cabin  
Lake of the Woods, Mahomet







## ACTIVE CHOICES: Champaign County Greenways & Trails Plan PUBLIC WORKSHOP #1

Join us in our first public forum about walking, bicycling, and the environment to:

- Learn about the planning process
- Map & comment on preferred routes, issues & opportunities
- Find out how to stay involved

Thursday, November 29, 2012  
6:00 - 8:00 p.m.  
Prince of Peace Church  
802 E. Douglas St., St. Joseph

Champaign County Regional Planning Commission strives to provide an environment welcoming to all persons regardless of physical or mental challenges, race, gender, or religion. Please call 217-328-3313 to request special accommodations at least 2 business days in advance.

This meeting has a structured agenda.  
Please attend the workshop in its entirety.  
RSVP is requested but not necessary.

To RSVP or for more information:

Gabe Lewis

CCRPC Transportation Planner

[glewis@ccrpc.org](mailto:glewis@ccrpc.org)

328-3313

CHAMPAIGN COUNTY  
**rpc**  
REGIONAL  
PLANNING  
COMMISSION










# ACTIVE CHOICES: Champaign County Greenways & Trails Plan PUBLIC WORKSHOP #1



Join us in our first public forum about walking, bicycling, and the environment to:

- ☐ Learn more about the planning process 
- ☐ Map & comment on preferred routes, issues & opportunities 
- ☐ Find out how to stay involved 

Champaign Government  
Television (CGTV) and  
Urbana Public Television  
(UPTV) advertisement

Thursday, November 15, 2012  
6:00 - 8:00 p.m.  
Illinois Terminal, 4<sup>th</sup> Floor  
45 E. University Ave., Champaign

To RSVP or for more information:

Gabe Lewis

CCRPC Transportation Planner

328-3313

[glewis@ccrpc.org](mailto:glewis@ccrpc.org)

[www.ccrpc.org](http://www.ccrpc.org)

This meeting has a structured agenda.  
Please attend the workshop in its entirety.  
RSVP is requested but not necessary.





# ACTIVE CHOICES: Champaign County Greenways & Trails Plan PUBLIC WORKSHOP #1 November 15, 2012



Champaign County Regional Planning Commission strives to provide an environment welcoming to all persons regardless of physical or mental challenges, race, gender, or religion. Please call Gabe Lewis at 217-328-3313 to request special accommodations at least 2 business days in advance.