

Eastlawn School Safe Routes to School Plan

Public Meeting



Gabe Lewis

Champaign County Regional Planning Commission

13 January 2020

Agenda

- **Introduction**
- **Existing Conditions**
- **Public Comment Opportunities**

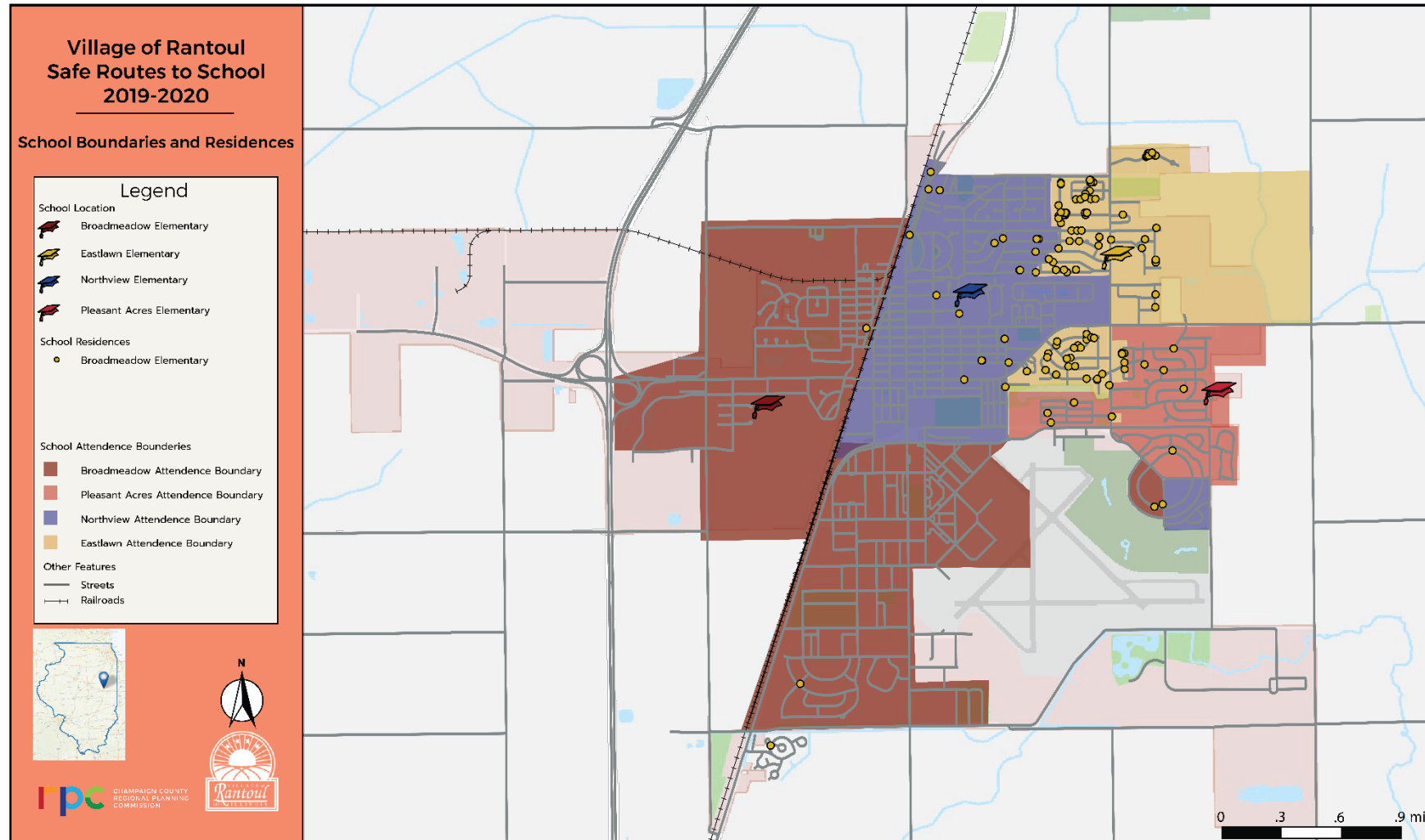
Introduction

- **CCRPC received grants from IDOT to create transportation plans for Rantoul:**
 - Safe Routes to School (SRTS) plans for K-5 Rantoul City Schools
 - Village Transportation Plan for the Village of Rantoul
- **CCRPC has been doing school traffic studies and safe walking route maps since 1987**
- **SRTS 5 E approach:**
 - Engineering
 - Education
 - Encouragement
 - Enforcement
 - Evaluation

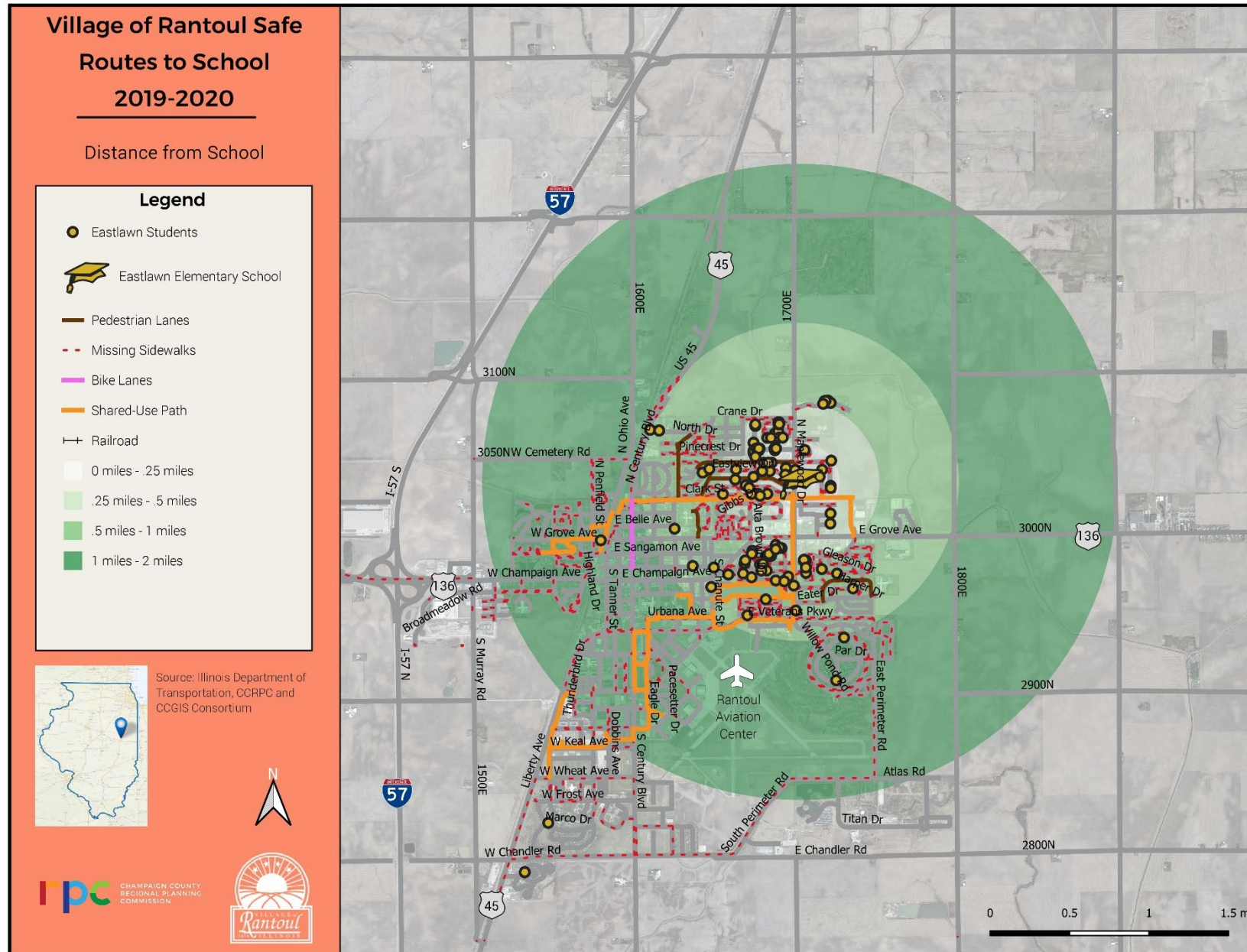
Eastlawn Elementary School Existing Conditions



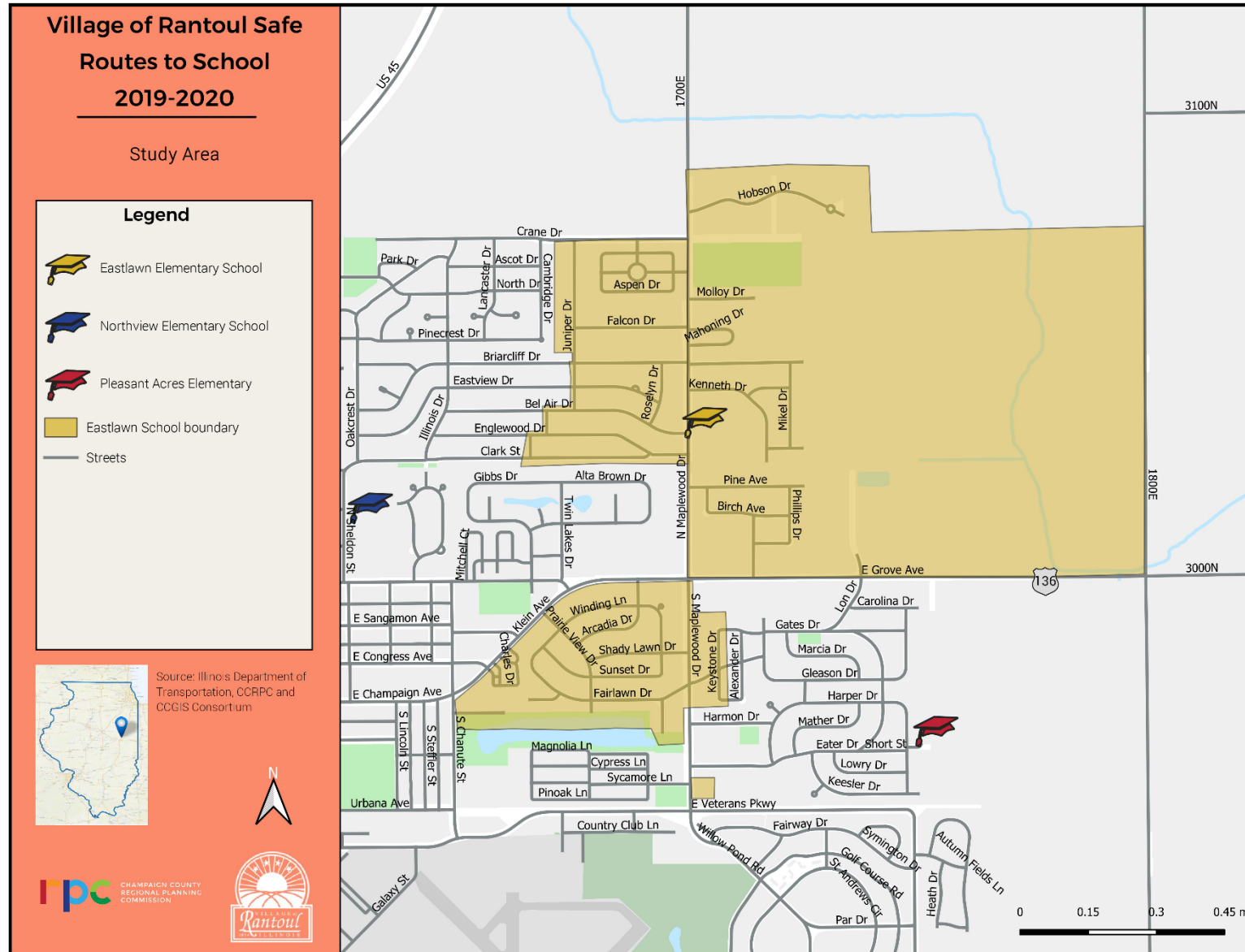
Eastlawn Student Distance to School



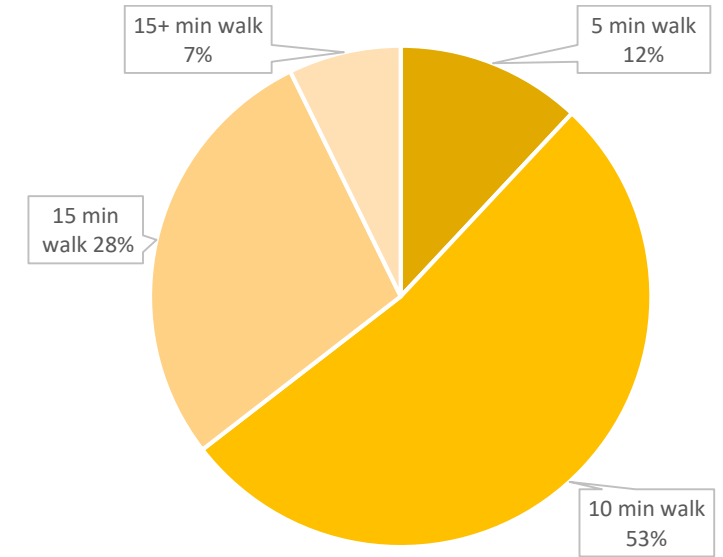
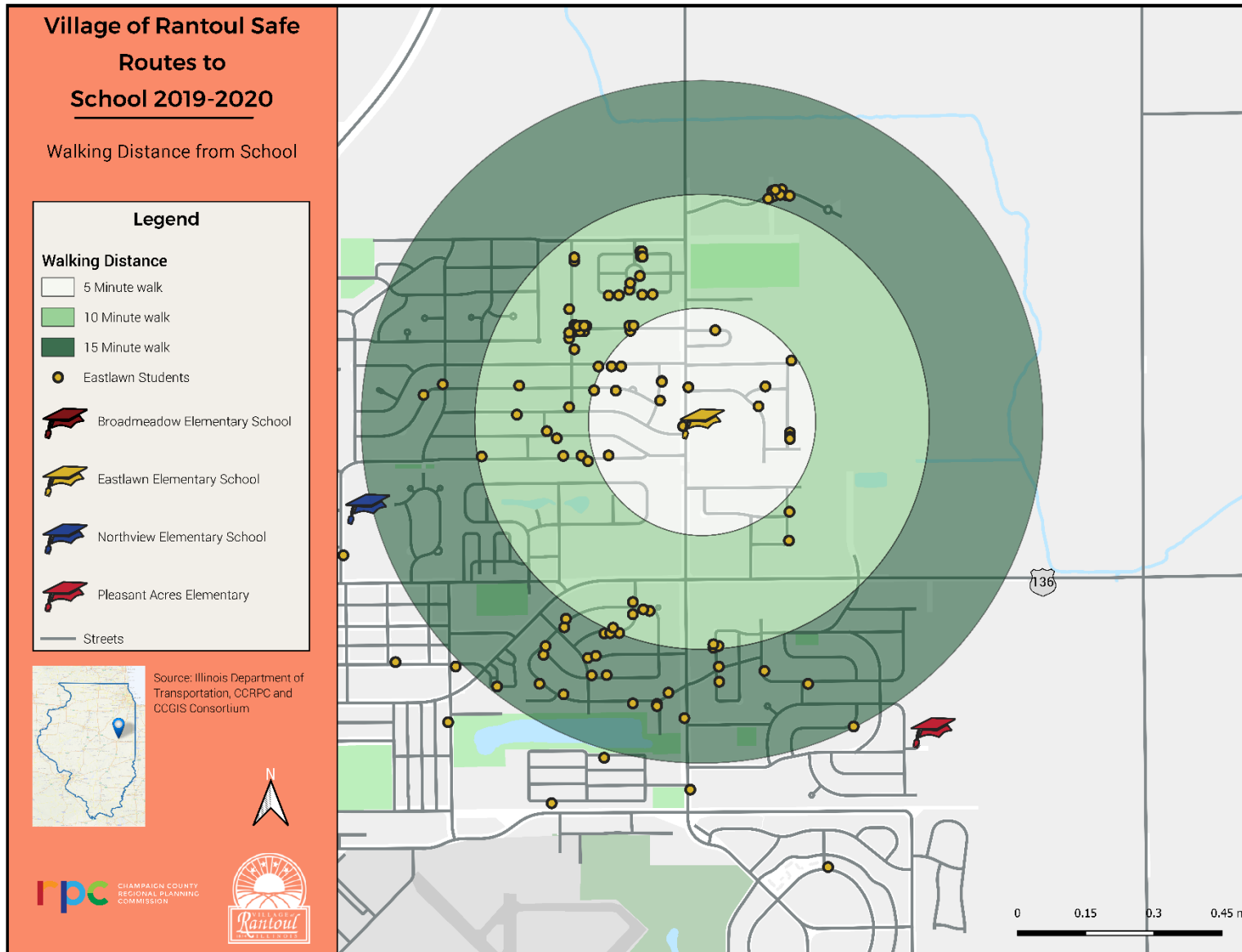
Eastlawn Student Distance to School



Eastlawn School Neighborhood



Eastlawn Distance & Time to School

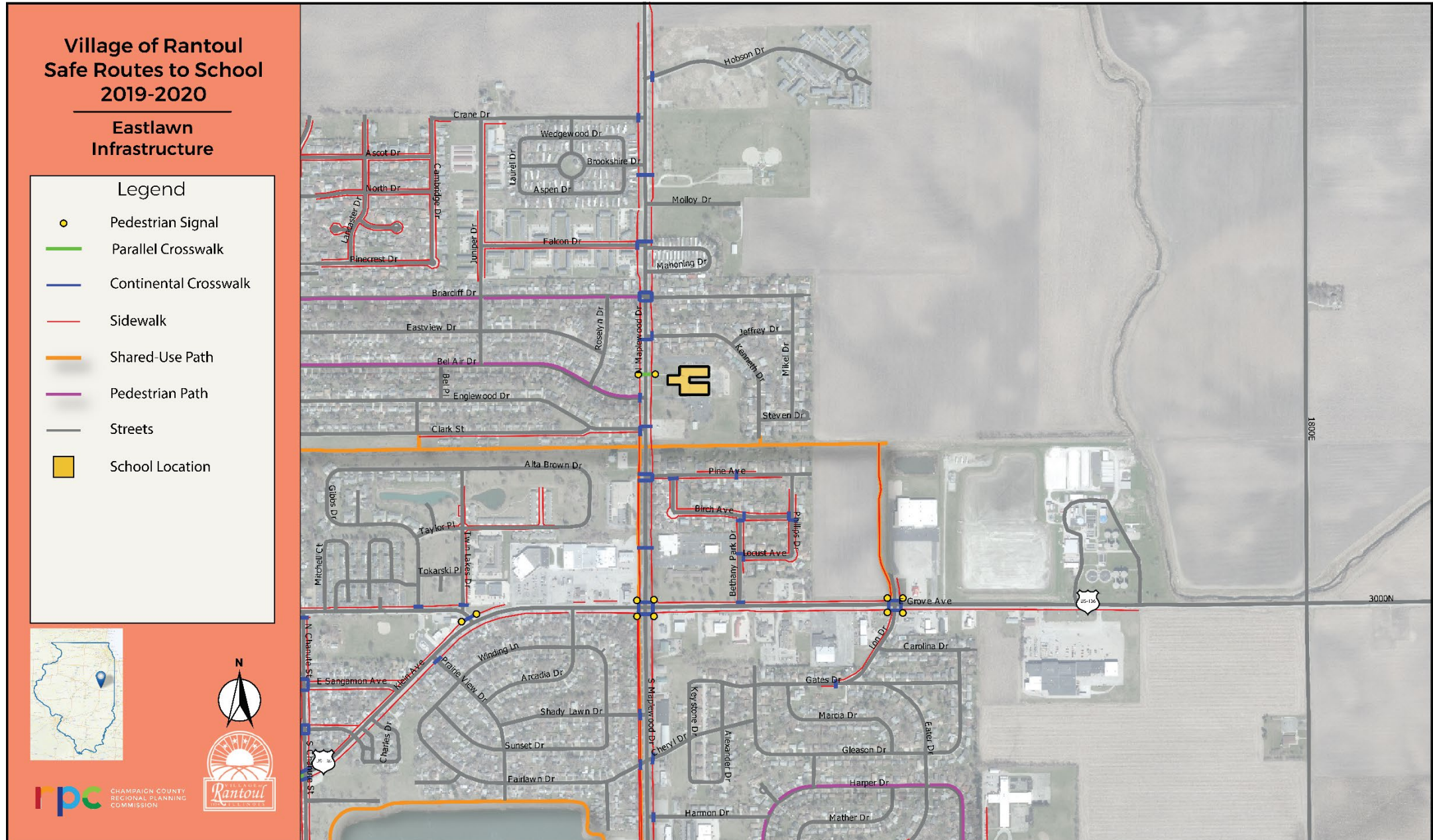


- **Over 65% of Eastlawn students live within 10 minutes walking distance to Eastlawn School.**
- **16% of these students need to cross US 136 (Grove/Klein Ave).**
- **Barriers:**
 - US 136 (Grove/Klein Ave)
 - Maplewood Drive

Eastlawn Students within a Mile

Eastlawn Elementary				
Grade	Students living 0 to 1/4 mile from school	Students living 1/4 to 1/2 mile from school	Students living 1/2 to 1 mile from school	Total
Kindergarten	6	14	6	26
First Grade	8	29	13	50
Second Grade	5	14	12	31
Third Grade	2	17	13	32
Fourth Grade	4	17	18	39
Fifth Grade	3	31	14	48
Total	28	122	76	226

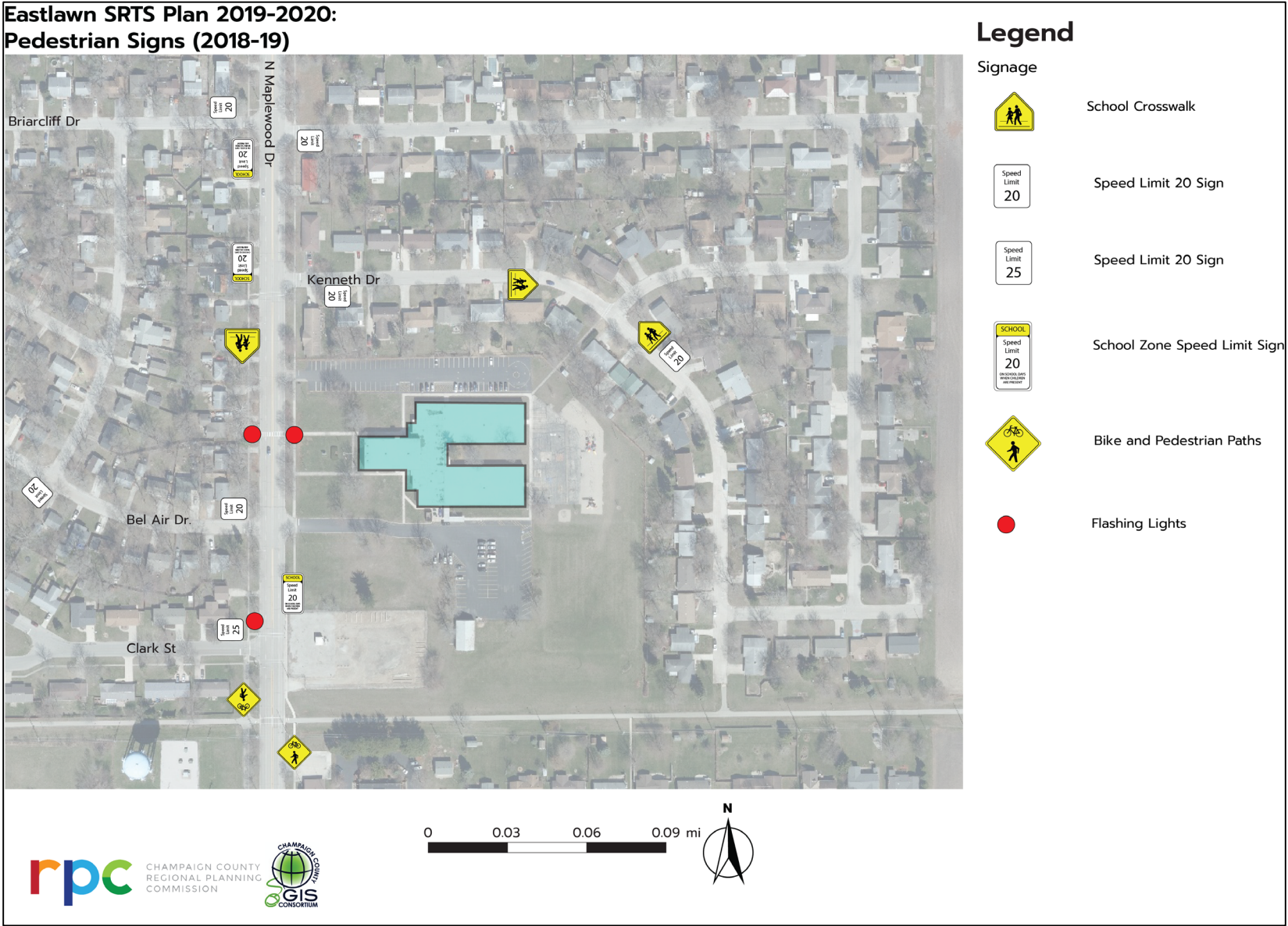
Eastlawn Bike and Pedestrian Facilities



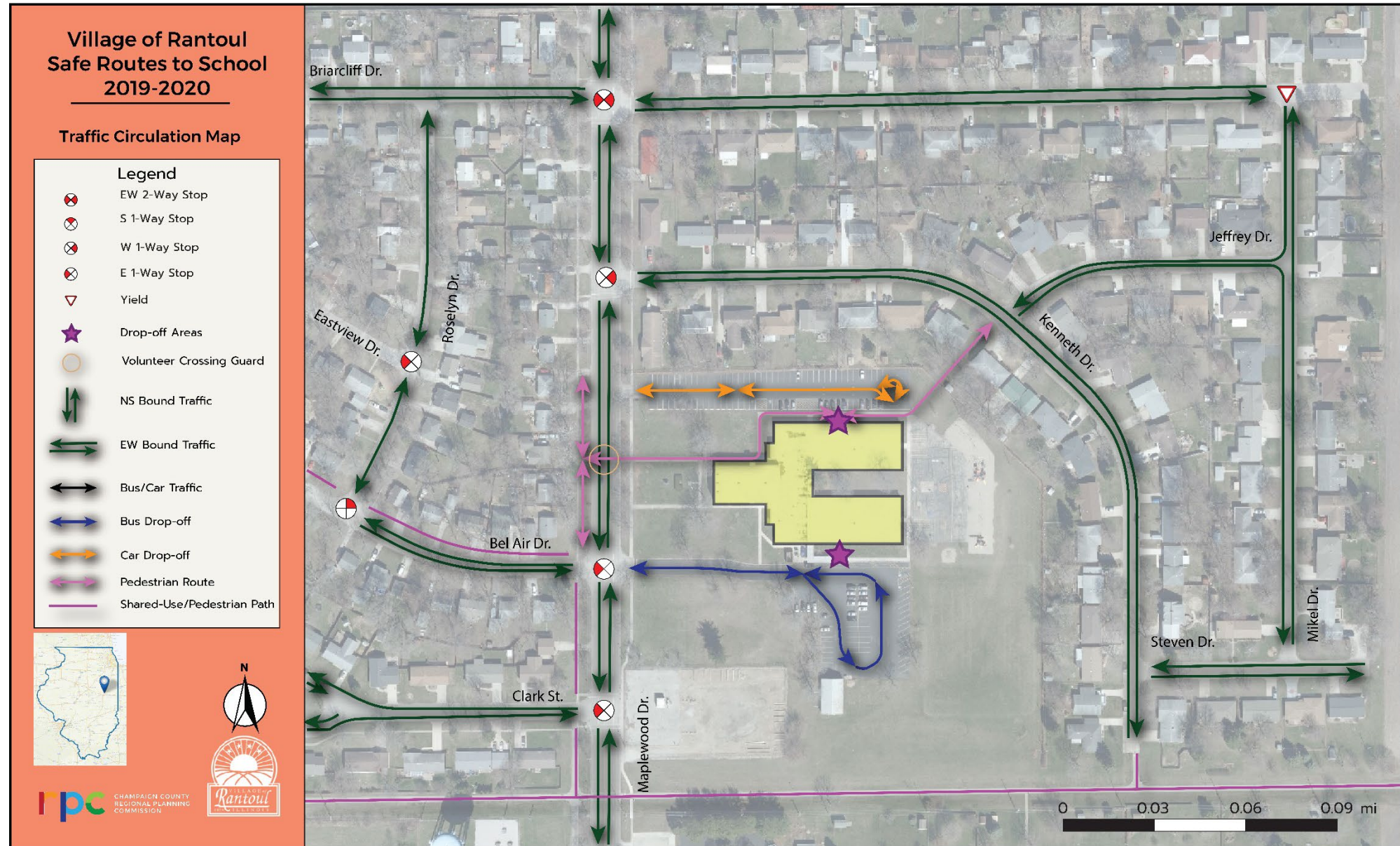
Eastlawn Pedestrian Compliance Scores



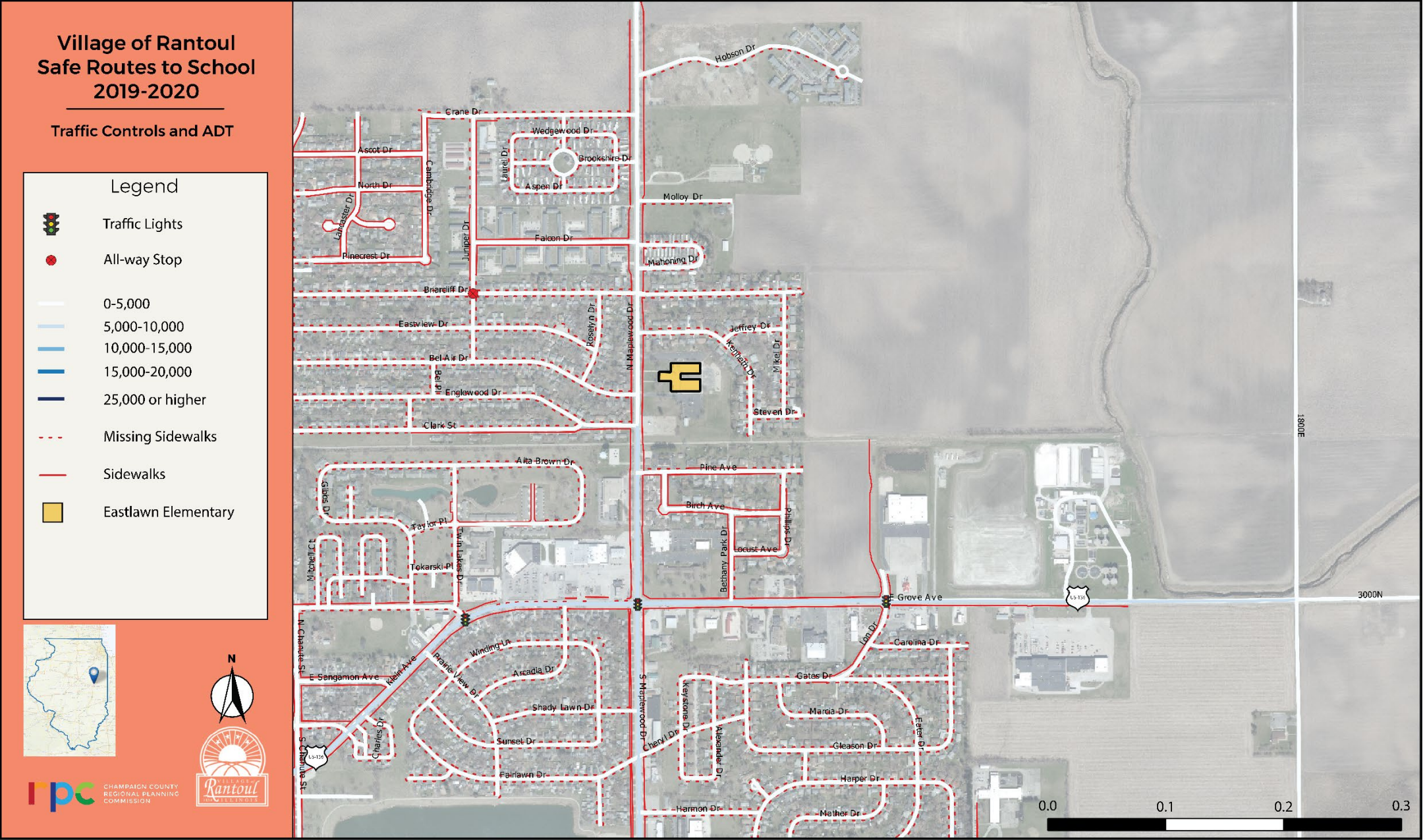
Eastlawn Pedestrian Signs



Eastlawn Traffic Circulation



Eastlawn Traffic Controls and Counts



Eastlawn Existing Mode Share

- **Family Vehicle = 65.3%**
 - 49% use north parking lot
 - 51% use south parking lot
- **Walk = 34.2%**
 - 84% of those walk from the west (crossing to west side of Maplewood Drive)
 - 9% of those walk from the north (on east side of Maplewood Drive)
 - 7% of those walk from the east (Kenneth Drive)
- **Bike = 0.4%**
 - Source: *RPC Tallies*



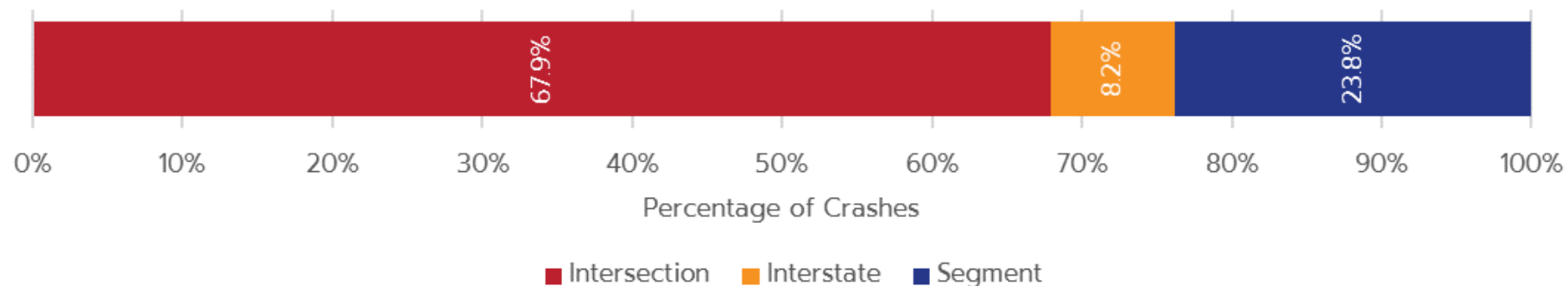
Bicycle & Pedestrian Crash Reports within a Mile of Eastlawn School

Eastlawn Pedestrian Crash Summary				
Location	Year	Weather	Injury Level	Road Surface
Prairie View/Klein	2013	Clear	B Injury	Dry

Eastlawn Pedestrian Crash Summary				
Location	Year	Weather	Injury Level	Road Surface
Maplewood/Clark	2014	Clear	C Injury	Dry
Maplewood/Grove	2016	Clear	B Injury	Dry

Rantoul Automobile Crashes

Crash Severity	2012	2013	2014	2015	2016	Total	%
Fatal	0	0	1	0	0	1	0%
A Injury	6	1	1	3	7	18	3%
B Injury	20	14	22	8	23	87	15%
C Injury	6	5	10	12	12	45	8%
No Injuries	85	86	98	69	94	432	74%
Total	117	106	132	92	136	583	100%



Student Survey Concerns (all schools)

- **Aggressive drivers**
- **Bike theft**
- **Busy streets to cross**
 - Maplewood Drive
 - US 45 (Century Blvd.)
 - US 136
- **Too far to walk**
- **Personal safety concerns**
- **Sibling/family influences**
- **Sidewalk/road condition**
- **Want more streetlights**



Tonight's Activities

- **Vision Board**

- Use post-it notes to provide your ideas for the future vision of transportation in Rantoul

- **Comment Card**

- Complete your comment card to provide more input on existing conditions and the future vision of transportation in Rantoul

- **Large Maps**

- Add your comments where you want to see transportation improvements in Rantoul

- **Survey**

- Complete transportation survey with Ana (U of I urban planning student)

Thank You!

- **Gabe Lewis**

- CCRPC Planner
- glewis@ccrpc.org
- 217-328-3313