

Pleasant Acres School Safe Routes to School Plan

Public Meeting



Gabe Lewis

Champaign County Regional Planning Commission

14 January 2020

Agenda

- **Introduction**
- **Existing Conditions**
- **Public Comment Opportunities**

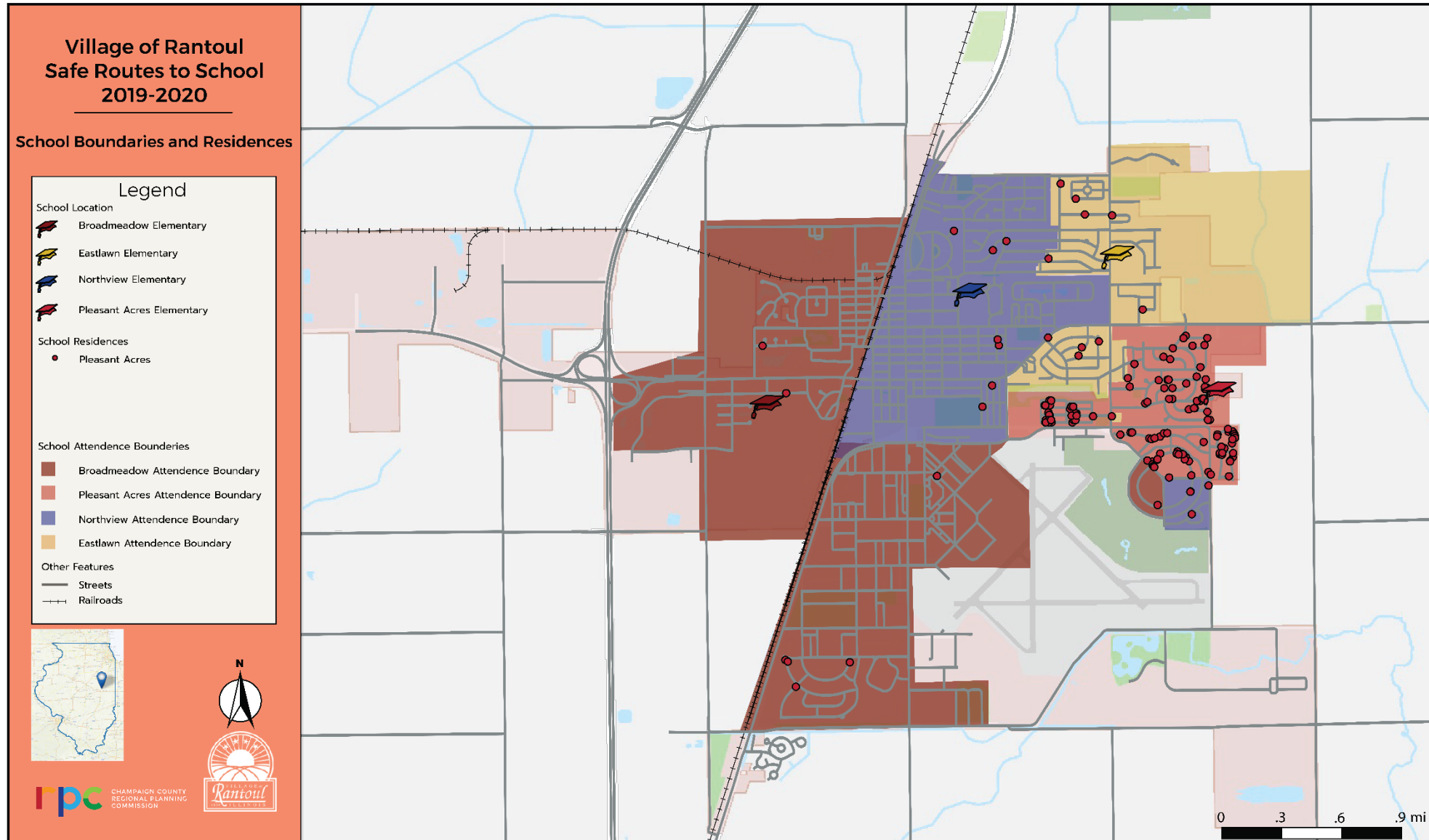
Introduction

- **CCRPC received grants from IDOT to create transportation plans for Rantoul:**
 - Safe Routes to School (SRTS) plans for K-5 Rantoul City Schools
 - Village Transportation Plan for the Village of Rantoul
- **CCRPC has been doing school traffic studies and safe walking route maps since 1987**
- **SRTS 5 E approach:**
 - Engineering
 - Education
 - Encouragement
 - Enforcement
 - Evaluation

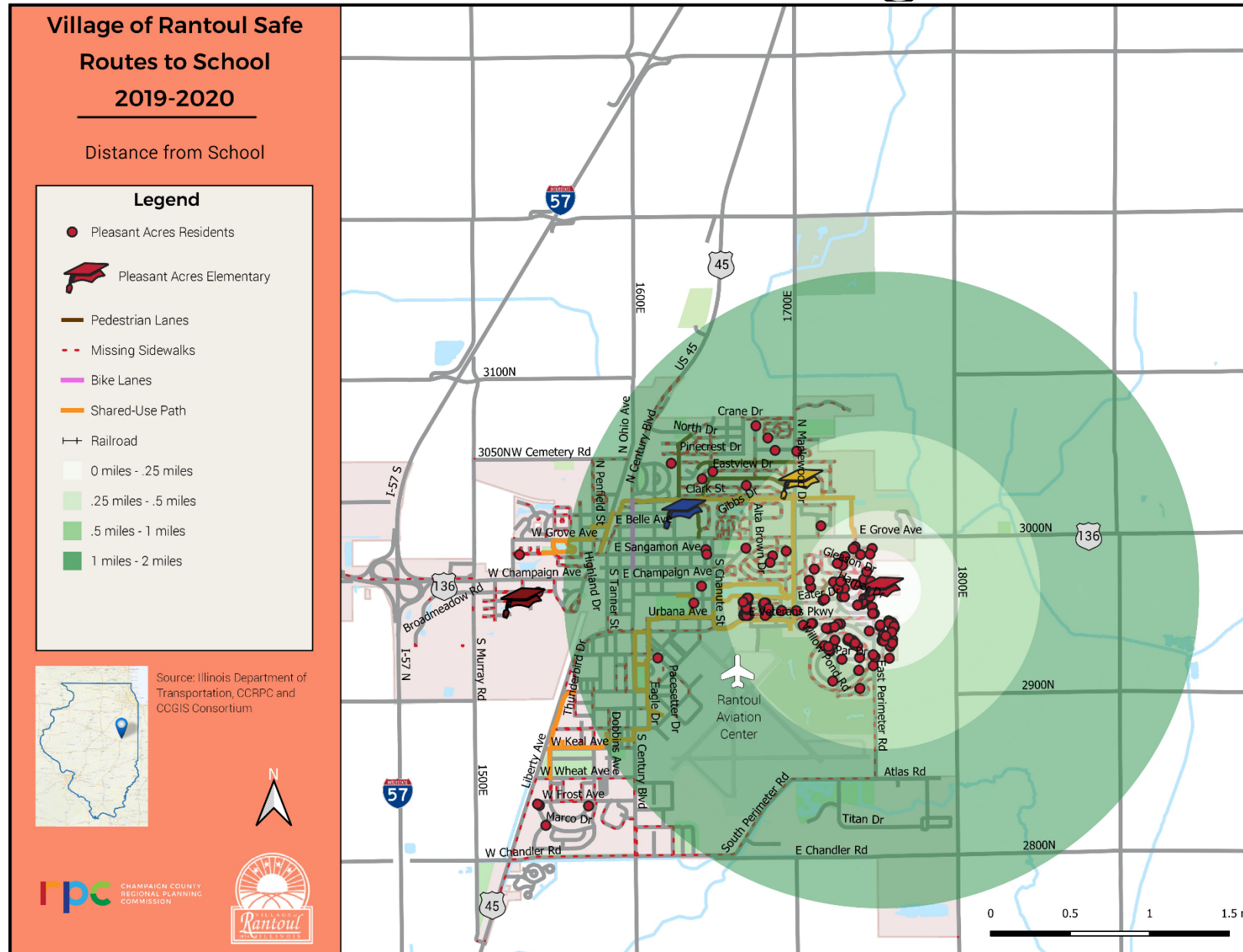
Pleasant Acres Elementary School Existing Conditions



Pleasant Acres Student Distance to School



Pleasant Acres School Neighborhood



Pleasant Acres Distance & Time to School

Village of Rantoul Safe Routes to School 2019-2020

Walking Distance from School

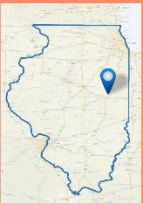
Legend

Walking Distance

- 5 Minute walk
- 10 Minute walk
- 15 Minute walk
- Pleasant Acres Students
- Streets

Eastlawn Elementary School

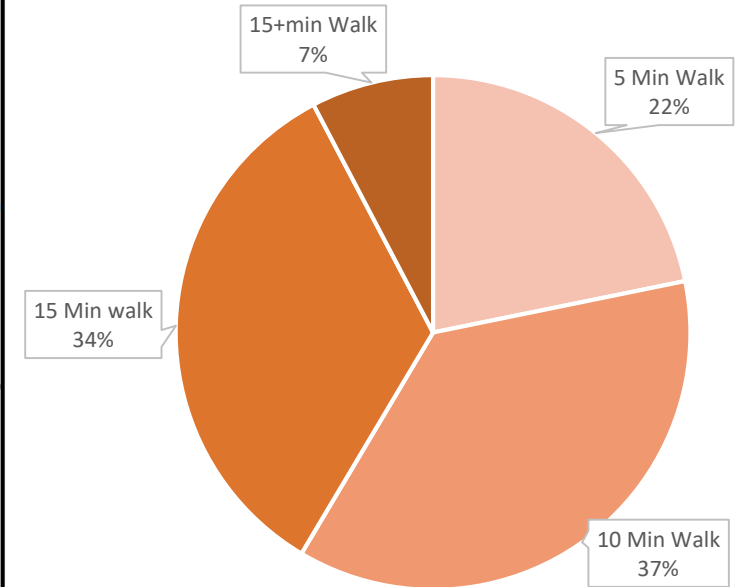
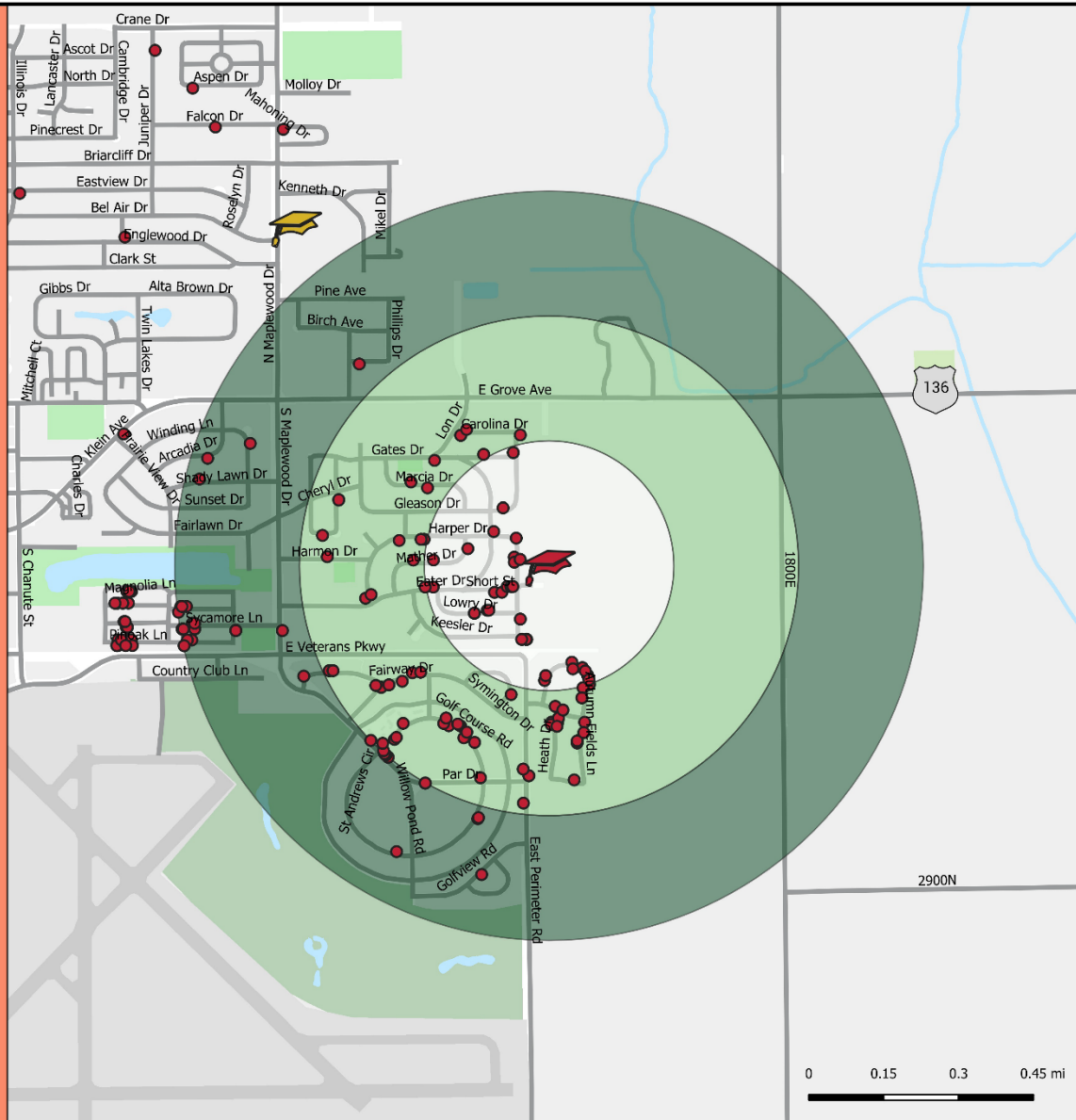
Pleasant Acres Elementary



Source: Illinois Department of Transportation, CCRPC and CCGIS Consortium



CHAMPAIGN COUNTY
REGIONAL PLANNING
COMMISSION

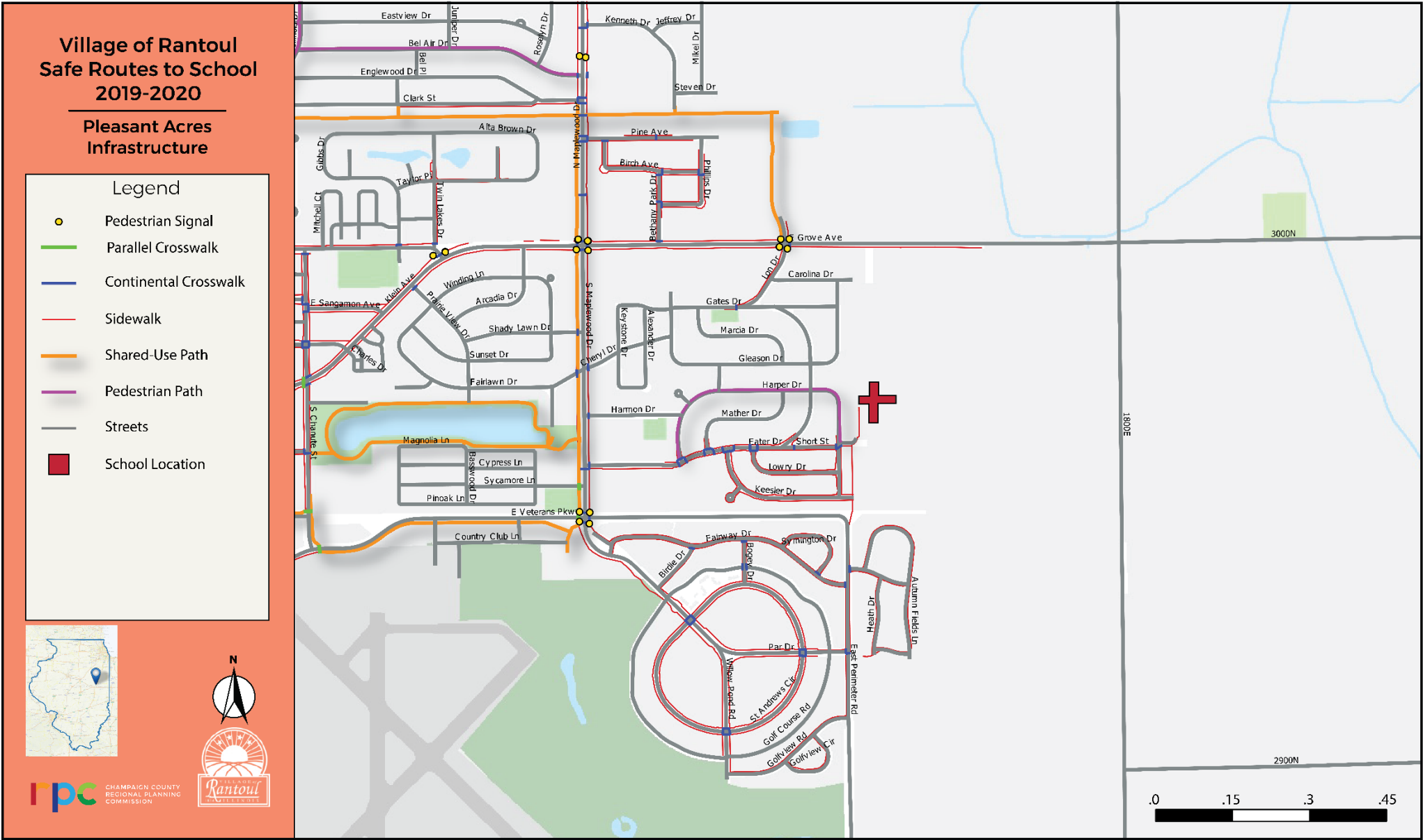


- Over 59% of Pleasant Acre students live within 10 minutes walking distance to Pleasant Acres School.
- Over 93% of the Students are within a 15 minute walk from Pleasant Acres
- 13% of the need to cross Maplewood
- 40% of the students will need to cross Veterans Parkway.
- Barriers
 - Maplewood Drive
 - Veterans Parkway

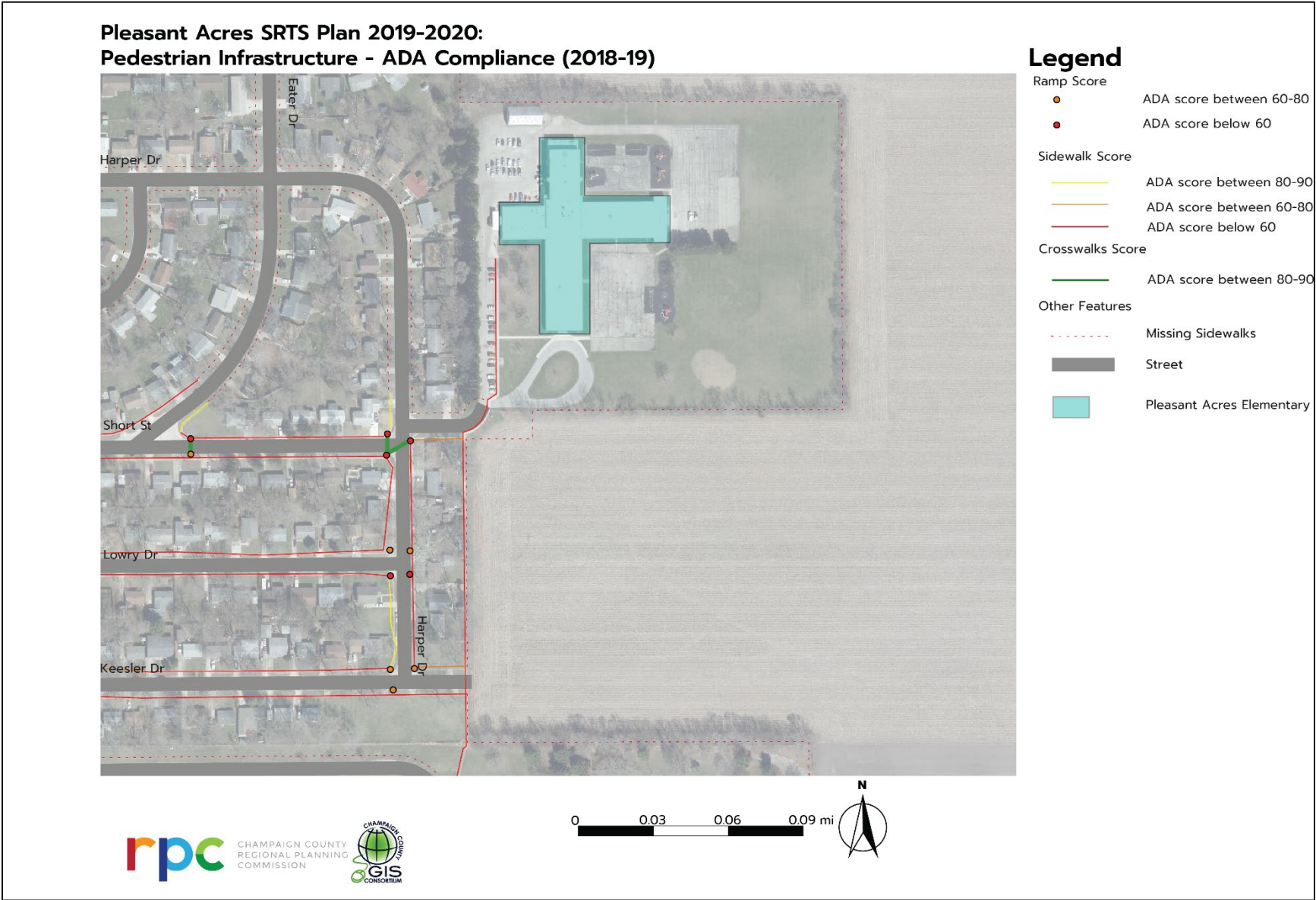
Pleasant Acres Students within a Mile

Pleasant Acres Elementary				
Grade	Students living 0 to 1/4 mile from school	Students living 1/4 to 1/2 mile from school	Students living 1/2 to 1 mile from school	Total
Kindergarten	10	18	14	42
First Grade	7	14	13	34
Second Grade	8	16	12	36
Third Grade	9	11	7	27
Fourth Grade	8	15	18	41
Fifth Grade	9	12	15	36
Total	51	86	79	216

Pleasant Acres Bike and Pedestrian Facilities



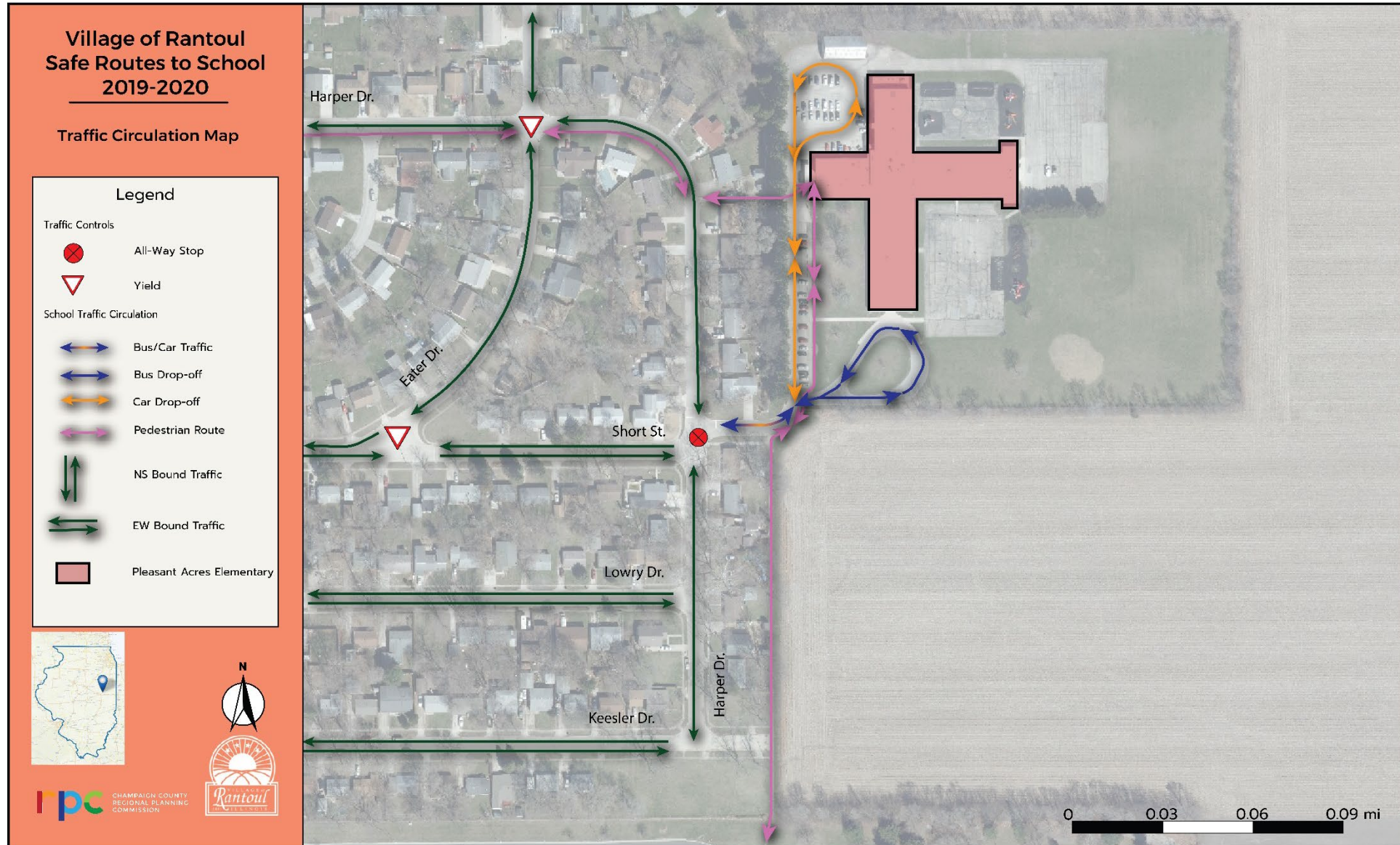
Pleasant Acres Pedestrian Compliance Scores



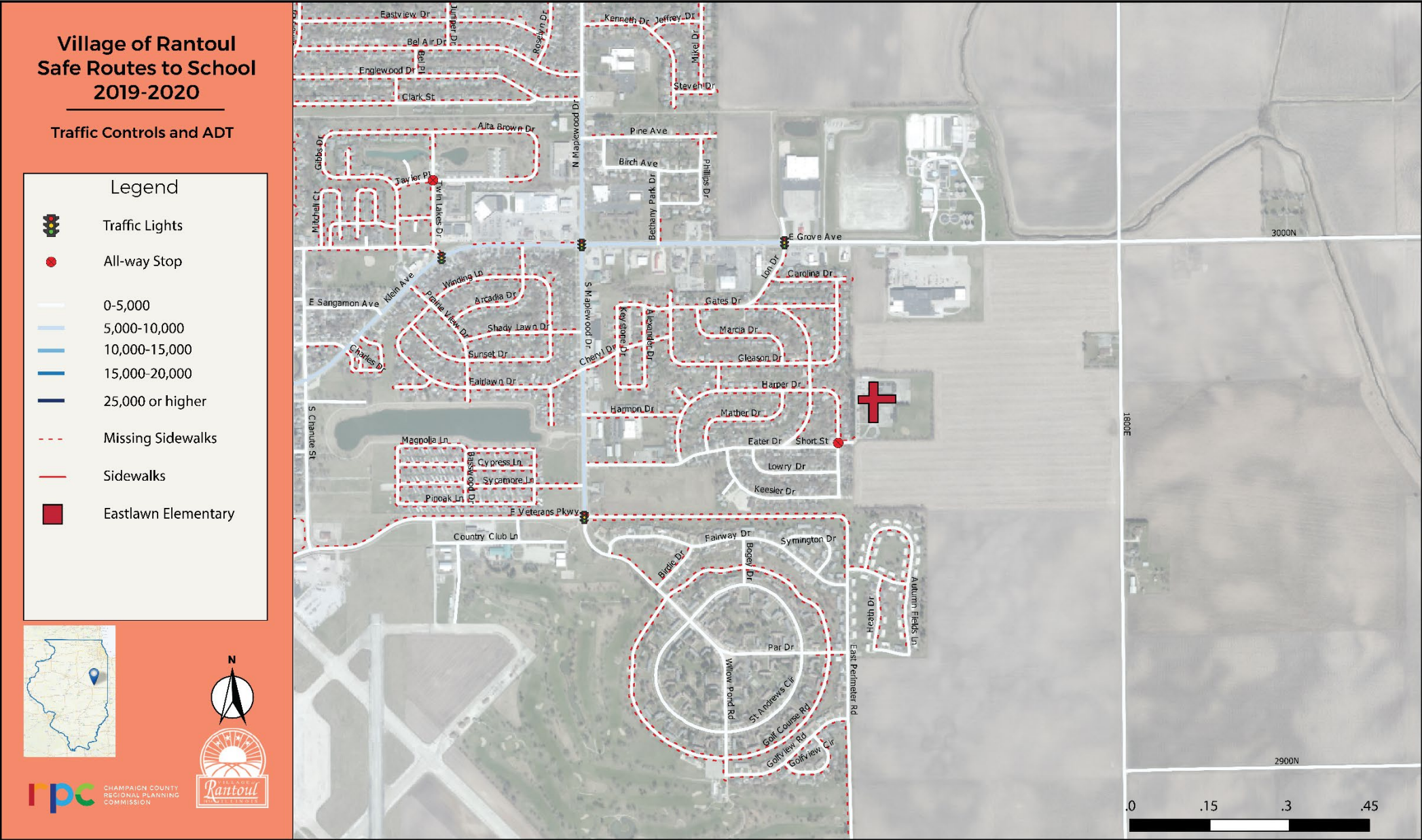
Pleasant Acres Pedestrian Signs



Pleasant Acres Traffic Circulation



Pleasant Acres Traffic Controls and Counts



Pleasant Acres Existing Mode Share

- **Family Vehicle = 46%**
- **Walk = 41%**
 - 54% of those walk from the west
 - 46% of those walk from the south
- **Daycare Van = 10.6%**
- **School Bus = 2%**
- **Bike = 0.5%**
 - *Source: RPC Tallies*

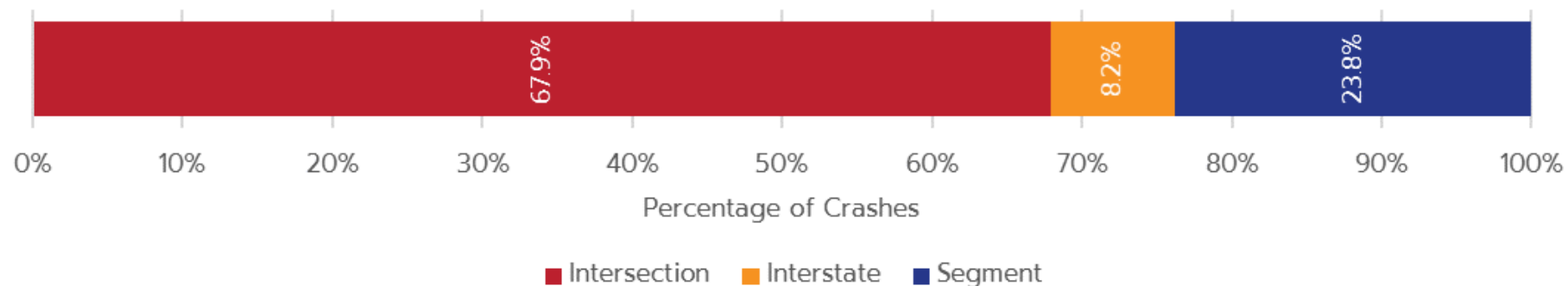


Bicycle & Pedestrian Crash Reports within a Mile of Pleasant Acres School

Pleasant Acres Pedestrian and Bicycle Crash Summary						
Location	Year	Weather	Injury Level	Road Surface	Day of the Week	Time
Pedestrian Crash Summary						
Maplewood/Grove	2013	Clear	B Injury	Dry	Sunday	8:43PM
Sycamore	2014	Clear	B Injury	Dry	Wednesday	6:08PM
Maplewood/Fairlawn	2016	Clear	B Injury	Dry	Friday	12:25AM
Bicycle Crash Summary						
Maplewood/Grove	2016	Clear	B Injury	Dry	Saturday	9:58AM
Eater/Harper	2016	Clear	B Injury	Dry	Saturday	8:25PM
Prairie View/Fairlawn	2017	Clear	B Injury	Dry	Friday	3:51PM

Rantoul Automobile Crashes

Crash Severity	2012	2013	2014	2015	2016	Total	%
Fatal	0	0	1	0	0	1	0%
A Injury	6	1	1	3	7	18	3%
B Injury	20	14	22	8	23	87	15%
C Injury	6	5	10	12	12	45	8%
No Injuries	85	86	98	69	94	432	74%
Total	117	106	132	92	136	583	100%



Student Survey Concerns (all schools)

- **Aggressive drivers**
- **Bike theft**
- **Busy streets to cross**
 - Maplewood Drive
 - US 45 (Century Blvd.)
 - US 136
- **Too far to walk**
- **Personal safety concerns**
- **Sibling/family influences**
- **Sidewalk/road condition**
- **Want more streetlights**



Tonight's Activities

- **Vision Board**

- Use post-it notes to provide your ideas for the future vision of transportation in Rantoul

- **Comment Card**

- Complete your comment card to provide more input on existing conditions and the future vision of transportation in Rantoul

- **Large Maps**

- Add your comments where you want to see transportation improvements in Rantoul

- **Survey**

- Complete transportation survey with Ana (U of I urban planning student)



Thank You!

- **Gabe Lewis**

- CCRPC Planner
- glewis@ccrpc.org
- 217-328-3313