

Broadmeadow School Safe Routes to School Plan

Public Meeting



Gabe Lewis

Champaign County Regional Planning Commission

15 January 2020

Agenda

- **Introduction**
- **Existing Conditions**
- **Public Comment Opportunities**

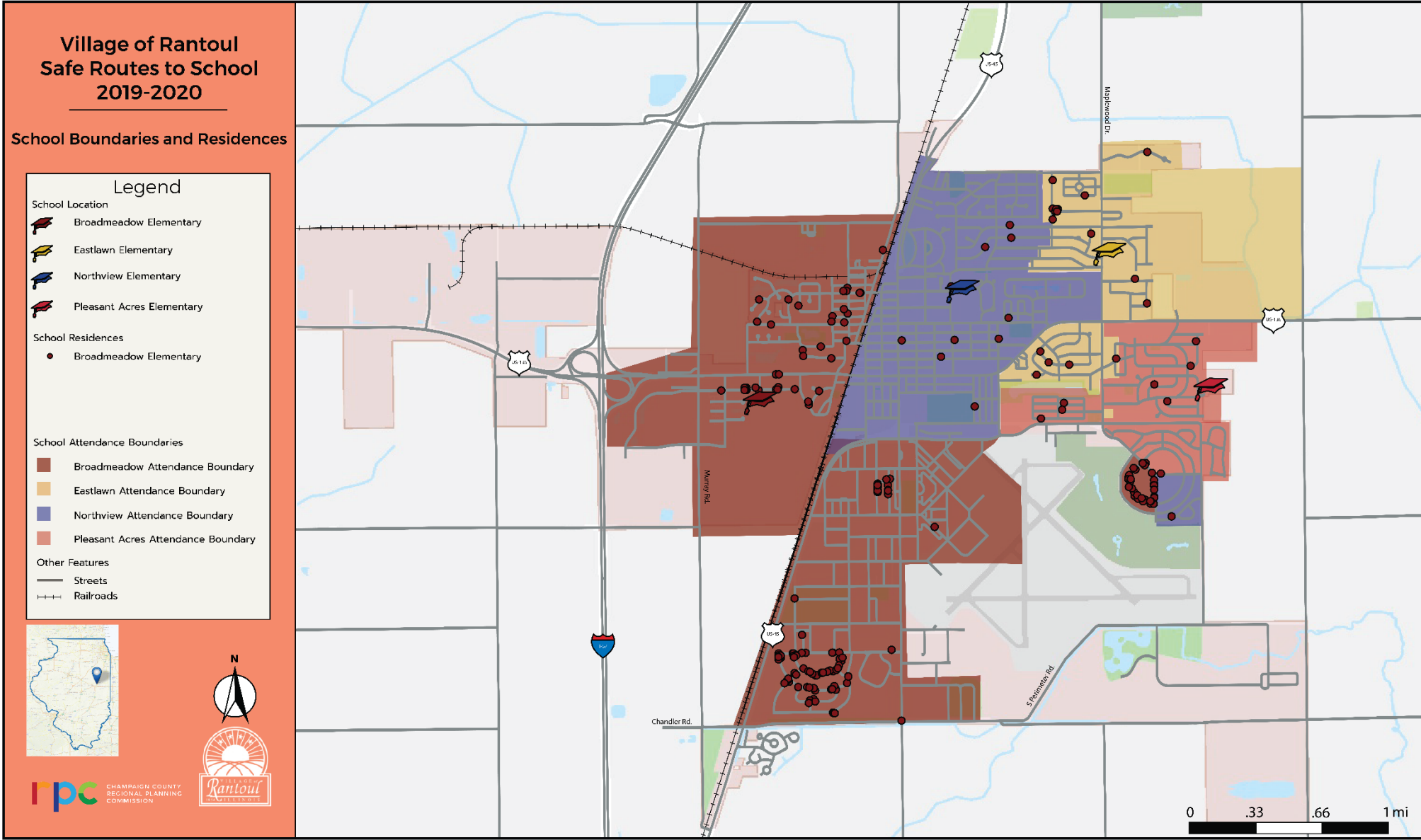
Introduction

- **CCRPC received grants from IDOT to create transportation plans for Rantoul:**
 - Safe Routes to School (SRTS) plans for K-5 Rantoul City Schools
 - Village Transportation Plan for the Village of Rantoul
- **CCRPC has been doing school traffic studies and safe walking route maps since 1987**
- **SRTS 5 E approach:**
 - Engineering
 - Education
 - Encouragement
 - Enforcement
 - Evaluation

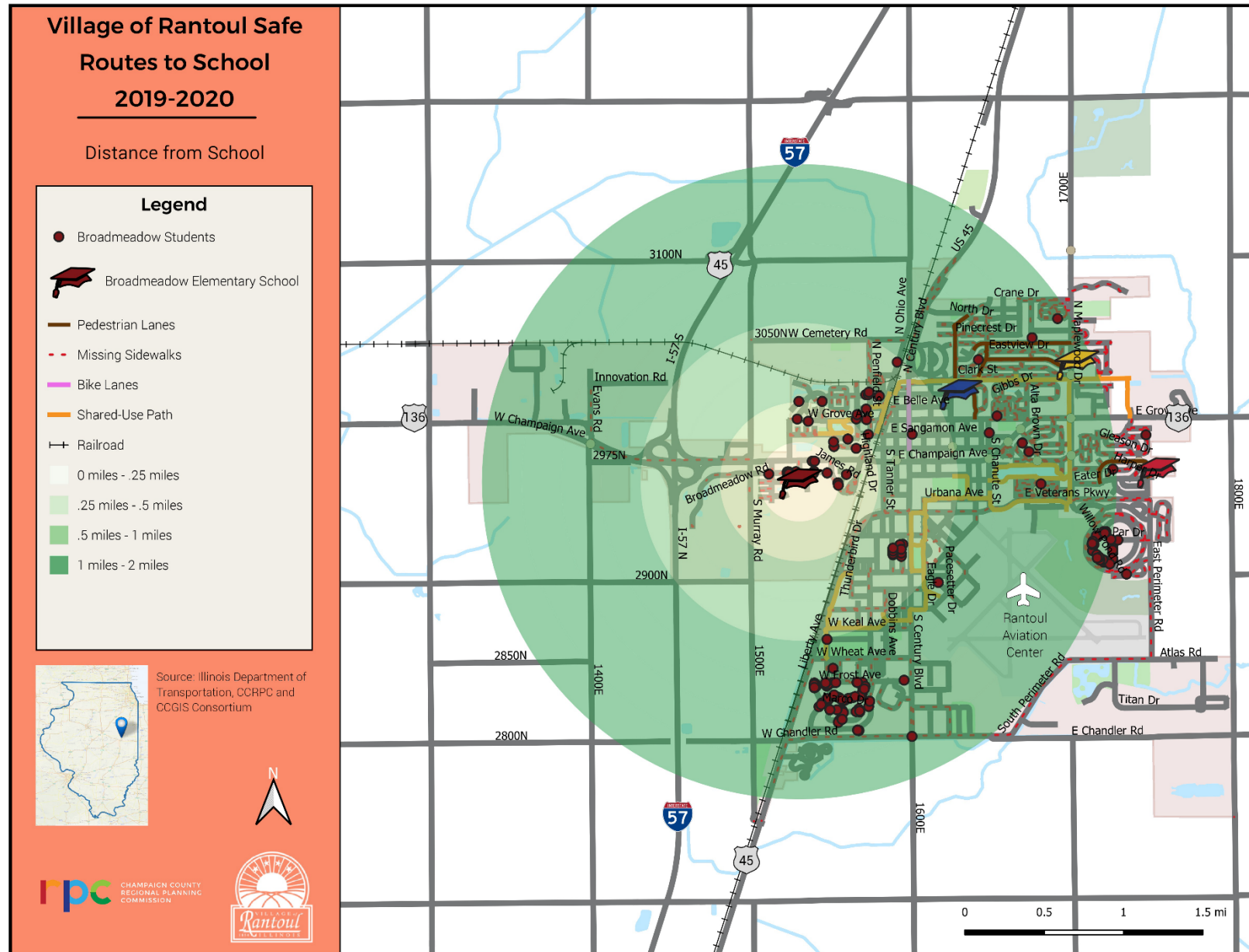
Broadmeadow Elementary School Existing Conditions



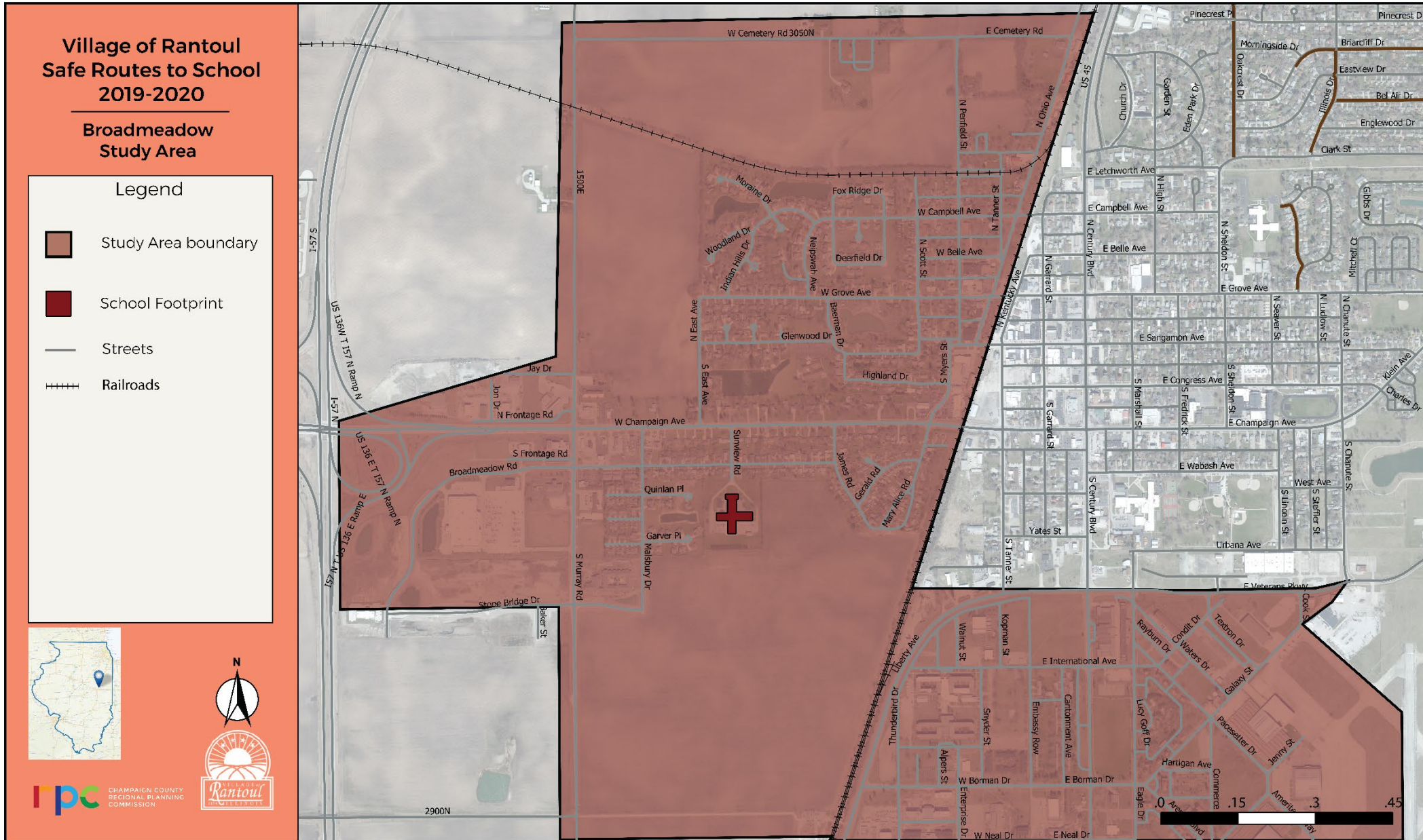
Broadmeadow Student Distance to School



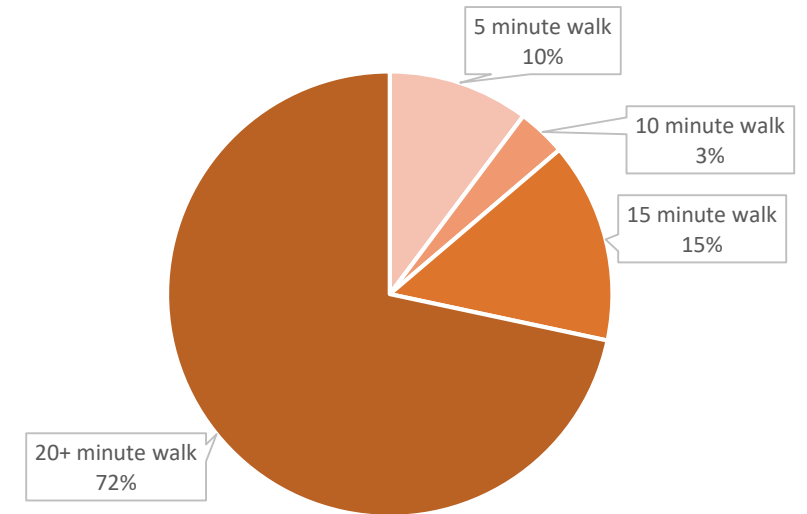
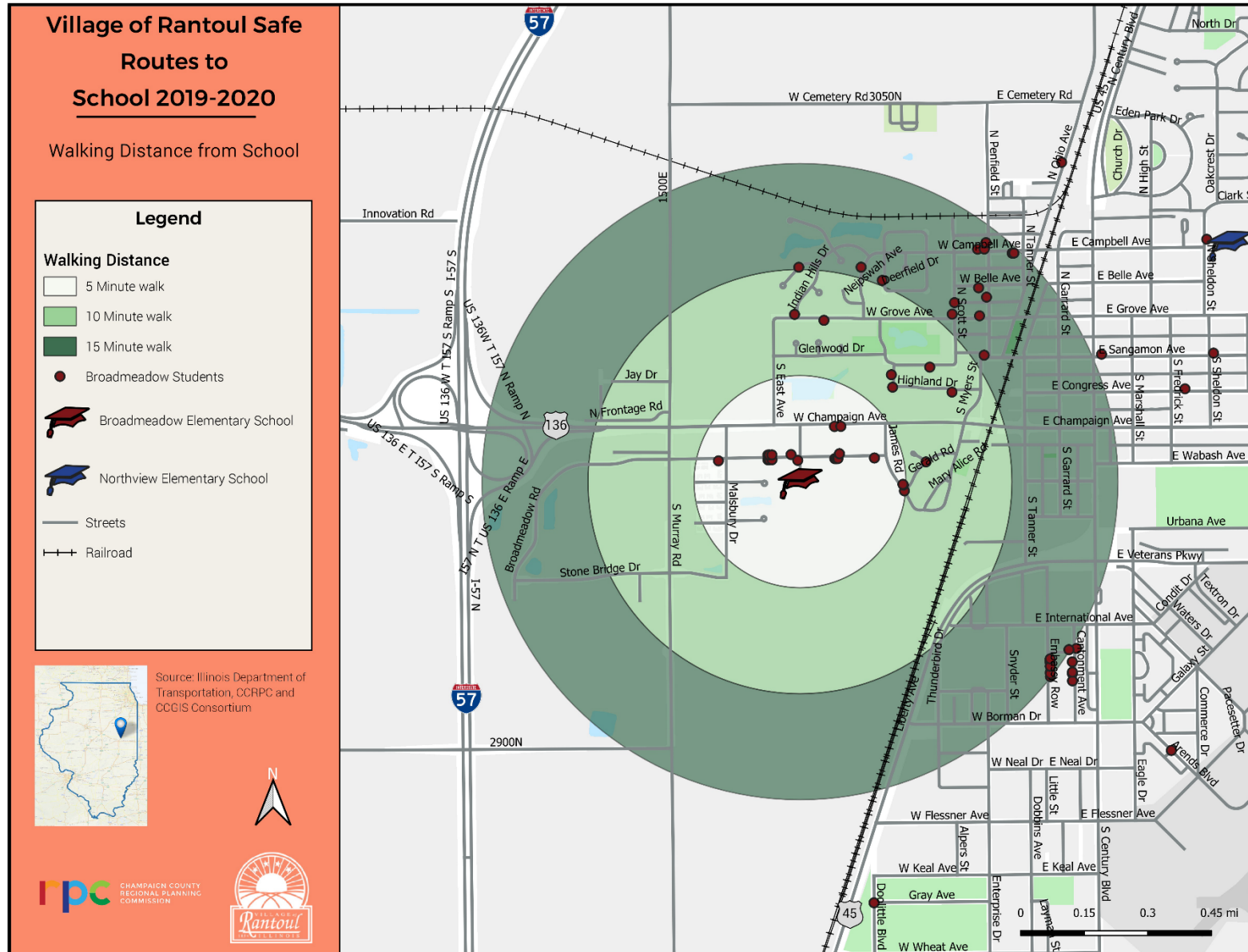
Broadmeadow Student Distance to School



Broadmeadow School Neighborhood



Broadmeadow Distance & Time to School

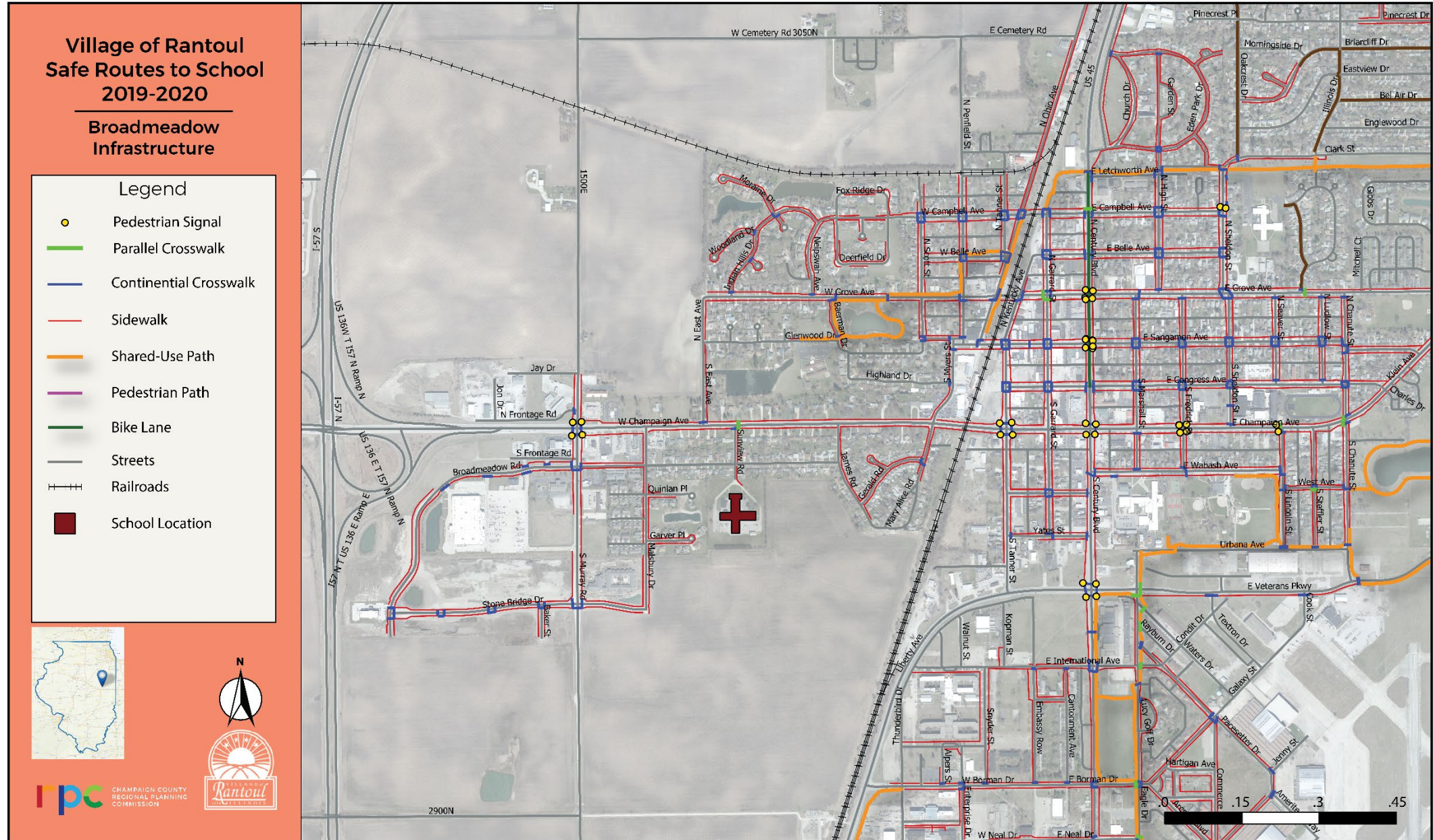


- **28% of Broadmeadow students live within 15 minutes walking distance to Broadmeadow School.**
- **16% of these students need to cross US 136 (Champaign Ave)**
- **Barriers:**
 - US 136 (Champaign Ave)
 - US 45
 - Railroad

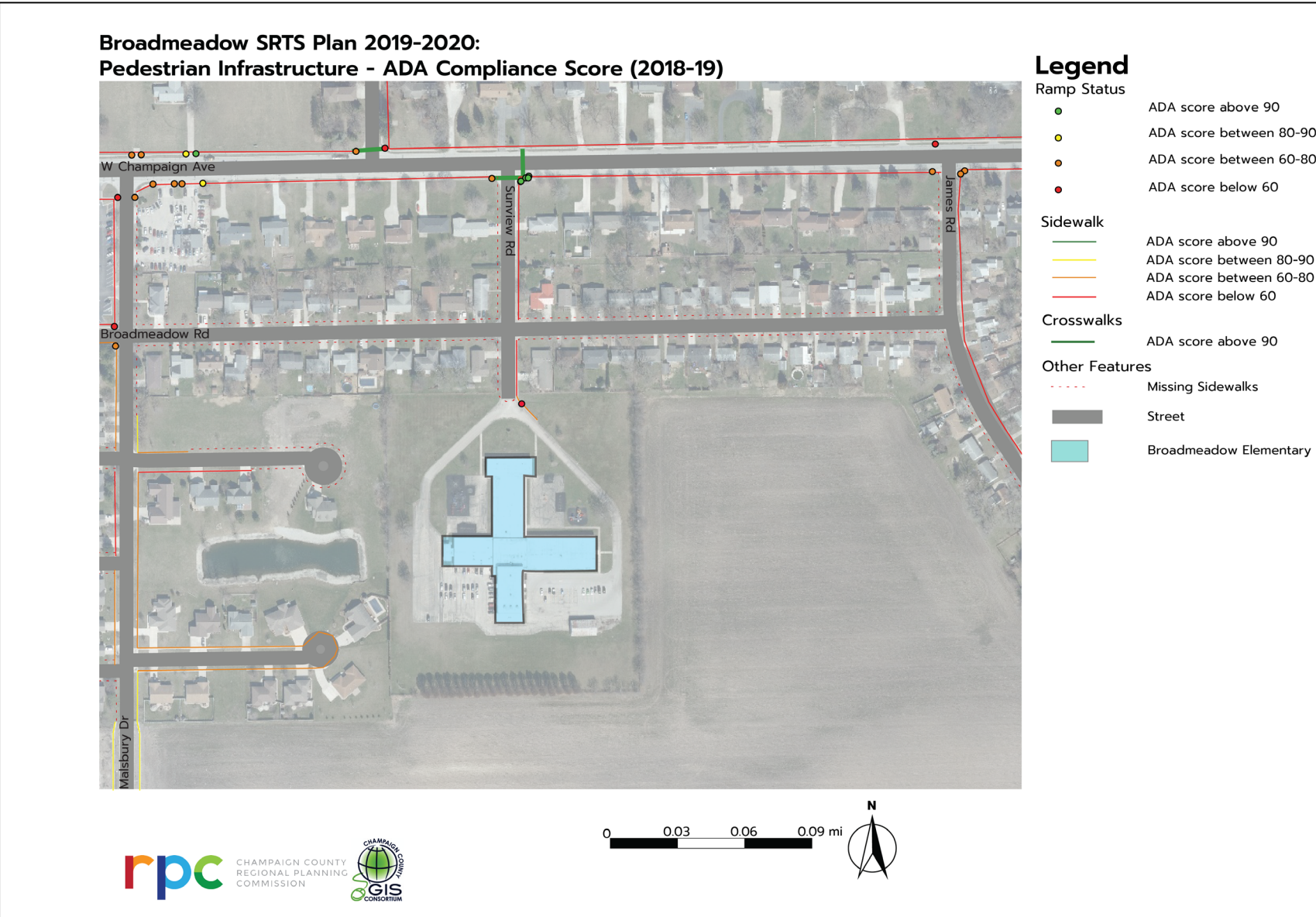
Broadmeadow Students within a Mile

Broadmeadow Elementary				
Grade	Students living 0 to 1/4 mile from school	Students living 1/4 to 1/2 mile from school	Students living 1/2 to 1 mile from school	Total
Kindergarten	4	3	8	15
First Grade	7	2	9	18
Second Grade	4	1	8	13
Third Grade	5	1	8	14
Fourth Grade	2	1	9	12
Fifth Grade	4	1	3	8
Total	26	9	45	80

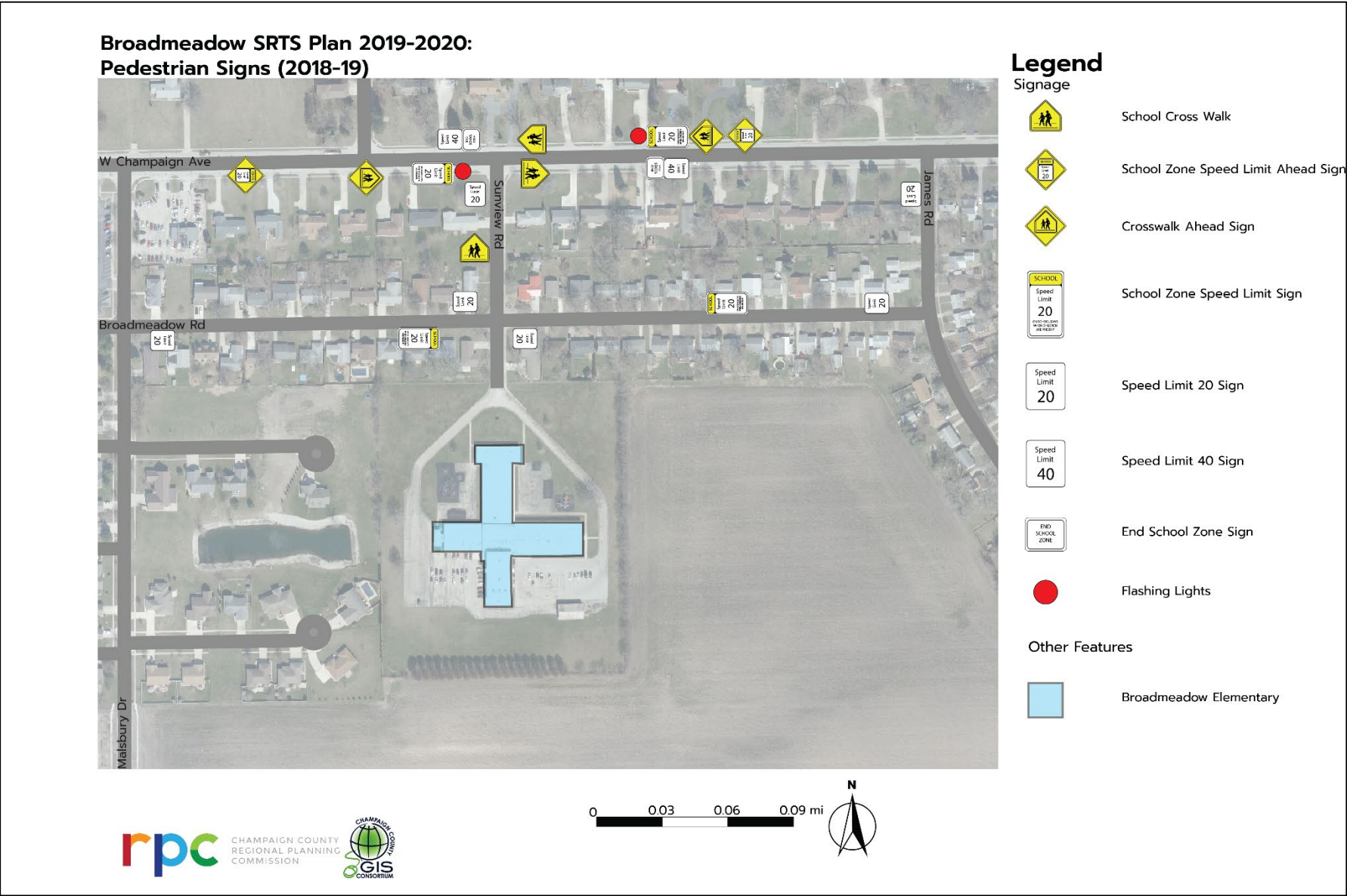
Broadmeadow Bike and Pedestrian Facilities



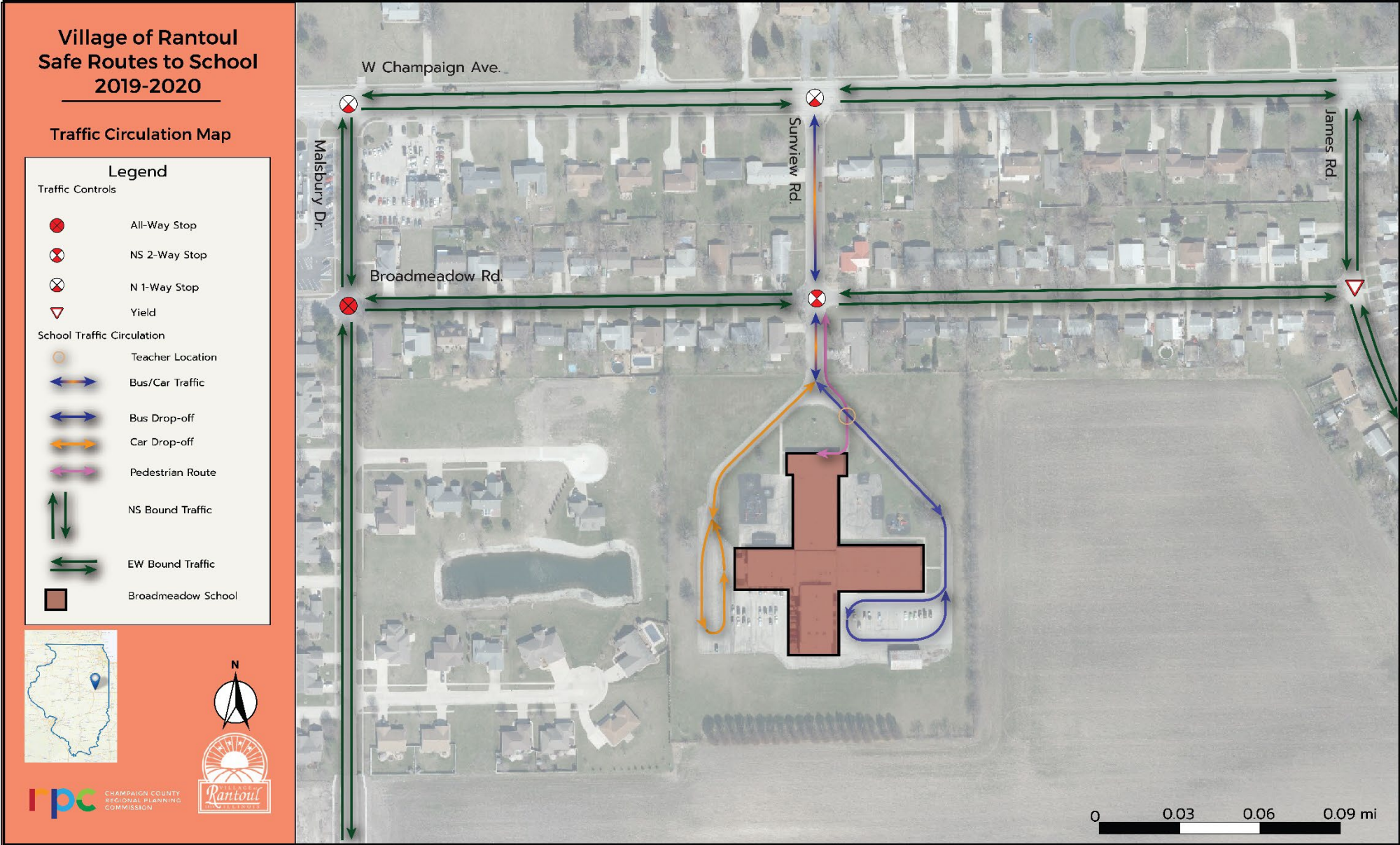
Broadmeadow Pedestrian Compliance Scores



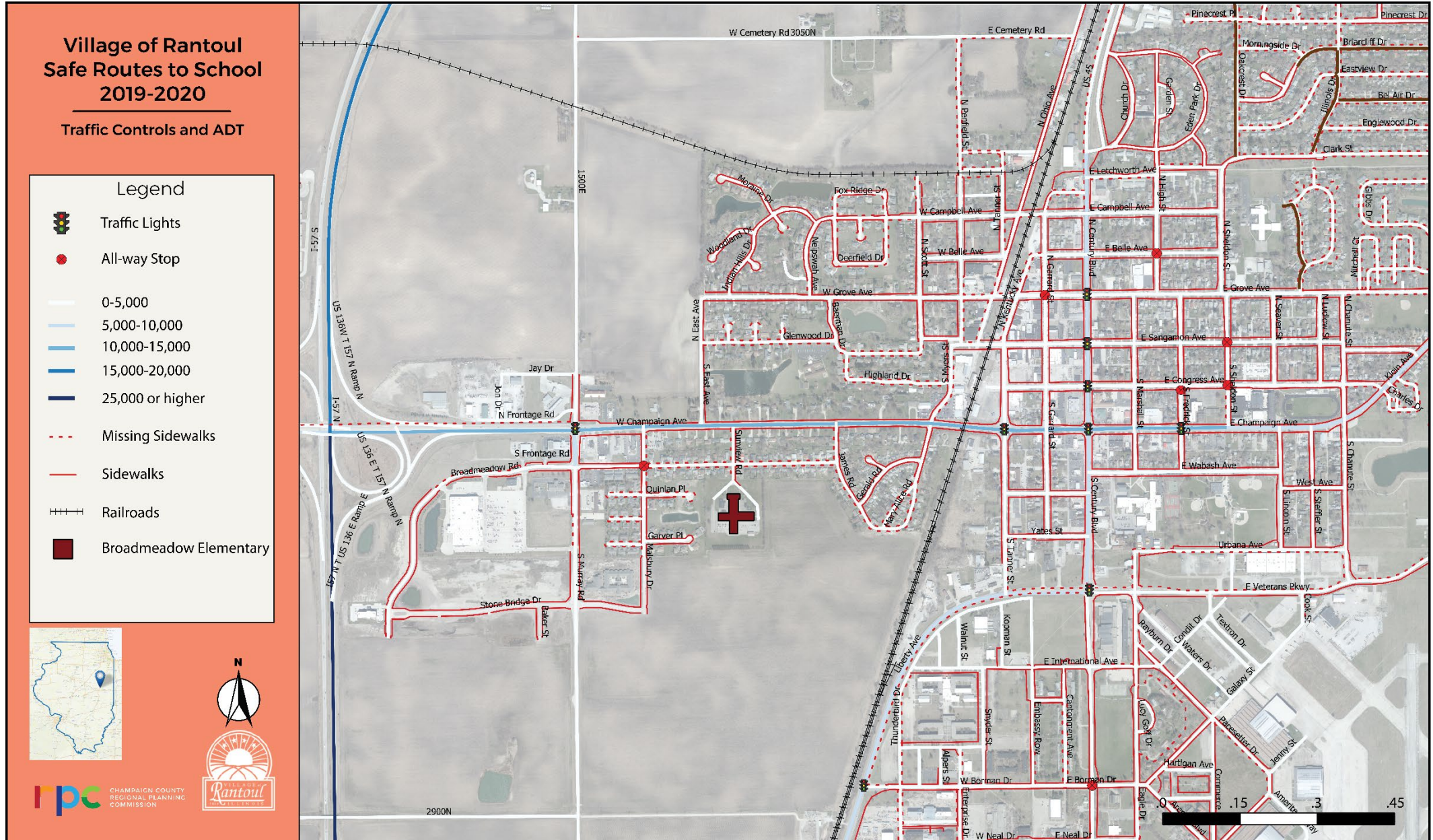
Broadmeadow Pedestrian Signs



Broadmeadow Traffic Circulation



Broadmeadow Traffic Controls and Counts



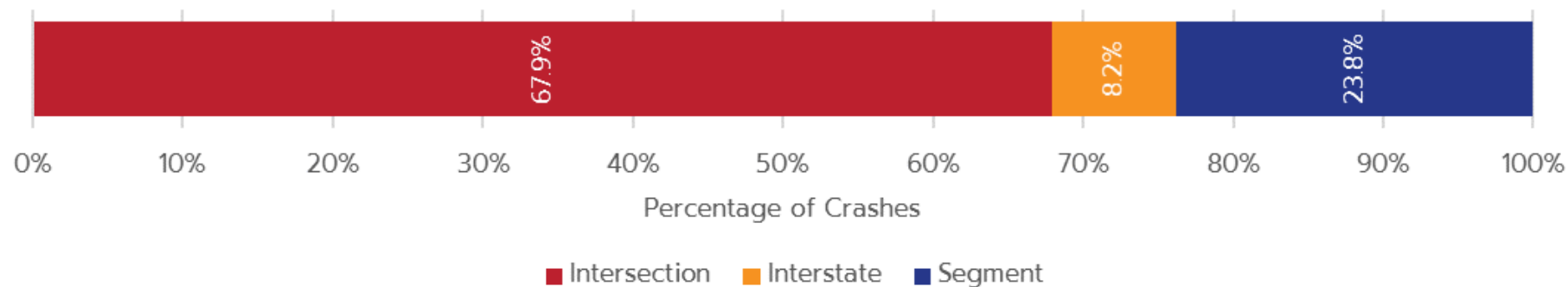
Broadmeadow Existing Mode Share

- **Family Vehicle = 70.3%**
- **School Bus = 18.1%**
- **Daycare Vans = 5.8%**
- **Walk = 5.2%**
- **Bike = 0.6%**
 - *Source: RPC Tallies*



Rantoul Automobile Crashes

Crash Severity	2012	2013	2014	2015	2016	Total	%
Fatal	0	0	1	0	0	1	0%
A Injury	6	1	1	3	7	18	3%
B Injury	20	14	22	8	23	87	15%
C Injury	6	5	10	12	12	45	8%
No Injuries	85	86	98	69	94	432	74%
Total	117	106	132	92	136	583	100%



Student Survey Concerns (all schools)

- **Aggressive drivers**
- **Bike theft**
- **Busy streets to cross**
 - Maplewood Drive
 - US 45 (Century Blvd.)
 - US 136
- **Too far to walk**
- **Personal safety concerns**
- **Sibling/family influences**
- **Sidewalk/road condition**
- **Want more streetlights**



Public Comment Opportunities

- **Rantoul residents can provide input on the SRTS and Transportation Plans at one of these meetings this week:**
 - Northview School Cafeteria, Thursday, 5:00-6:30 pm
- **Your input and existing conditions information will be used to develop recommendations for all plans**

Tonight's Activities

- **Vision Board**

- Use post-it notes to provide your ideas for the future vision of transportation in Rantoul

- **Comment Card**

- Complete your comment card to provide more input on existing conditions and the future vision of transportation in Rantoul

- **Large Maps**

- Add your comments where you want to see transportation improvements in Rantoul

- **Survey**

- Complete transportation survey with Ana (U of I urban planning student)



Thank You!

- **Gabe Lewis**

- CCRPC Planner
- glewis@ccrpc.org
- 217-328-3313