

Northview School Safe Routes to School Plan

Public Meeting



Gabe Lewis

Champaign County Regional Planning Commission

16 January 2020

Agenda

- **Introduction**
- **Existing Conditions**
- **Public Comment Opportunities**

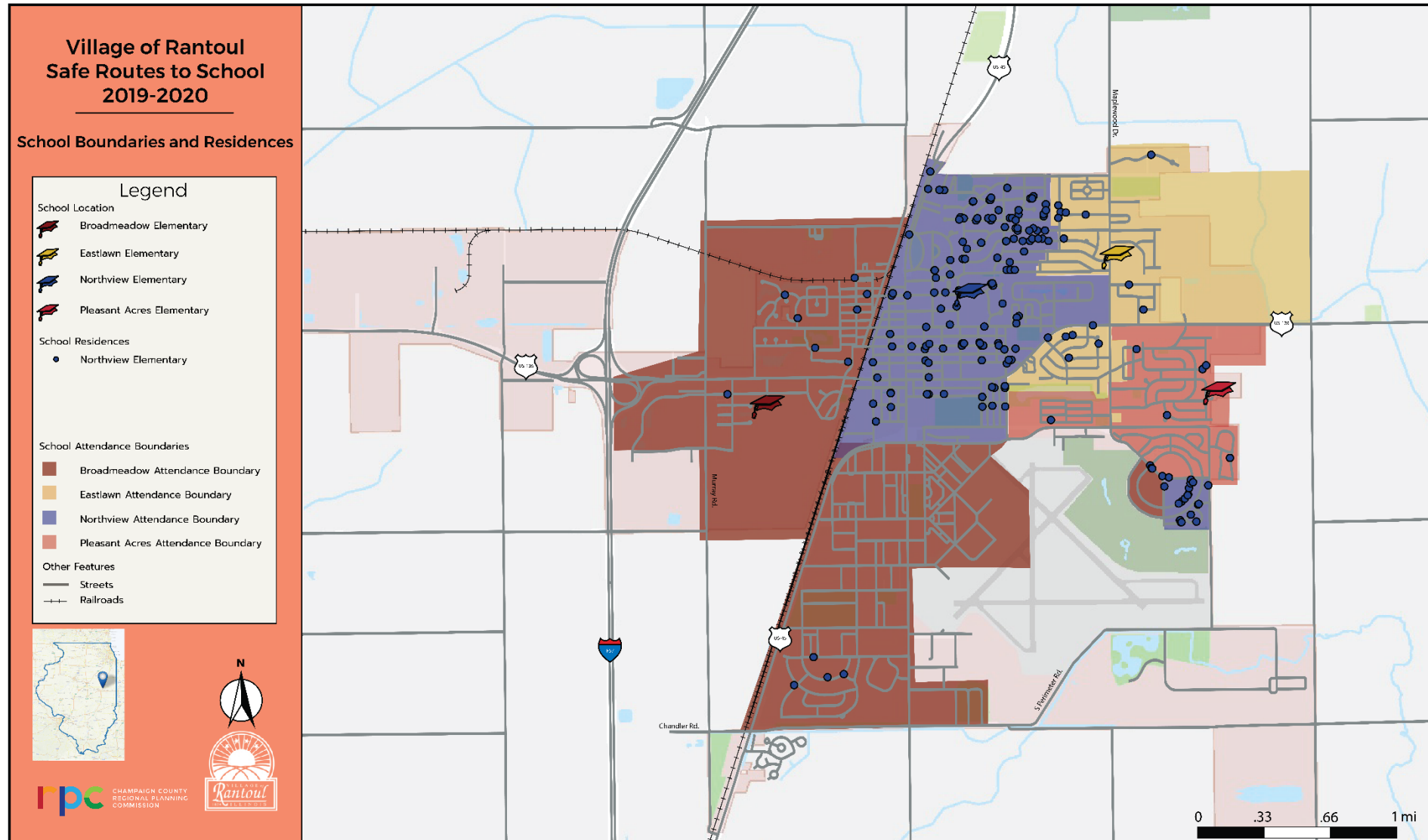
Introduction

- **CCRPC received grants from IDOT to create transportation plans for Rantoul:**
 - Safe Routes to School (SRTS) plans for K-5 Rantoul City Schools
 - Village Transportation Plan for the Village of Rantoul
- **CCRPC has been doing school traffic studies and safe walking route maps since 1987**
- **SRTS 5 E approach:**
 - Engineering
 - Education
 - Encouragement
 - Enforcement
 - Evaluation

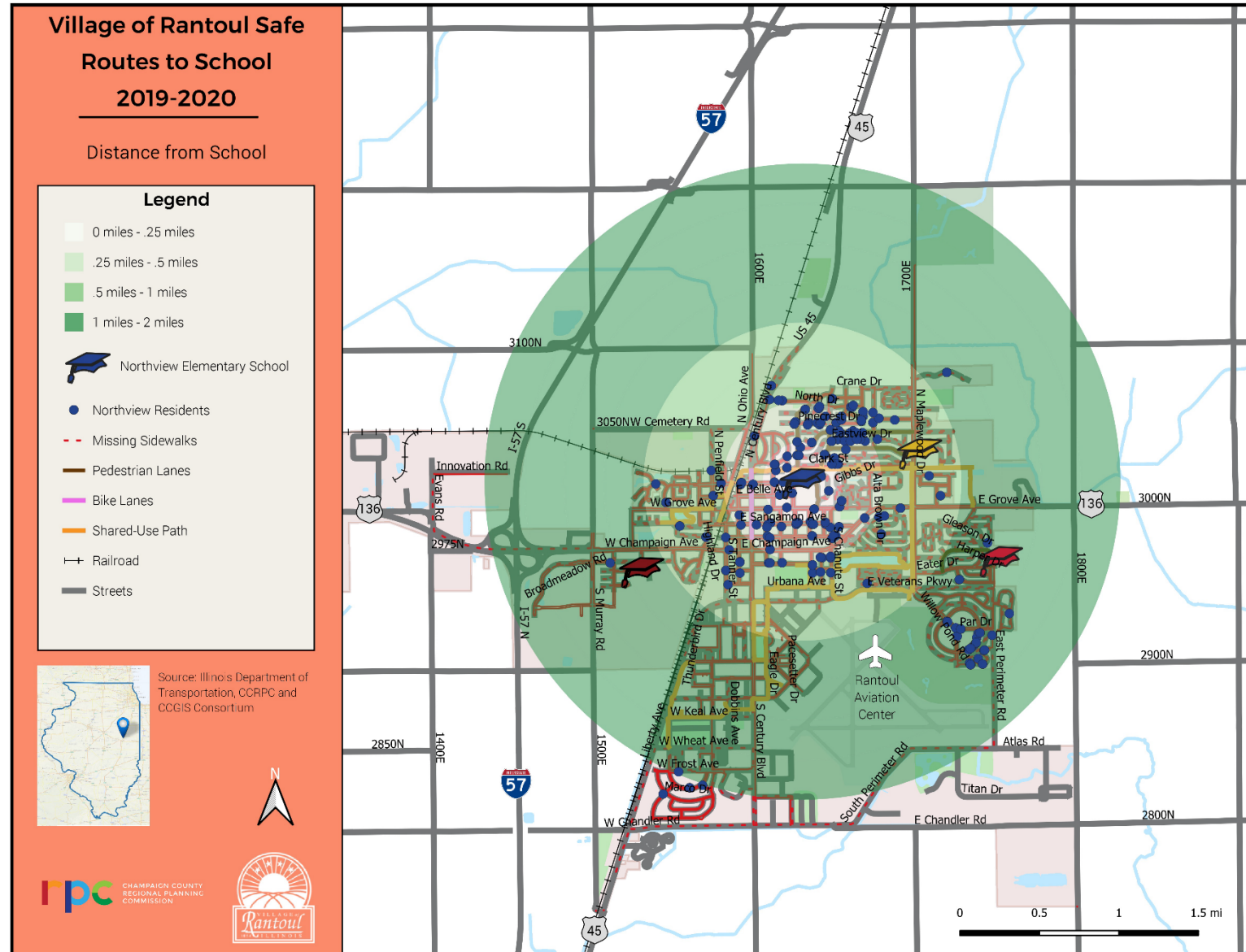
Northview Elementary School Existing Conditions



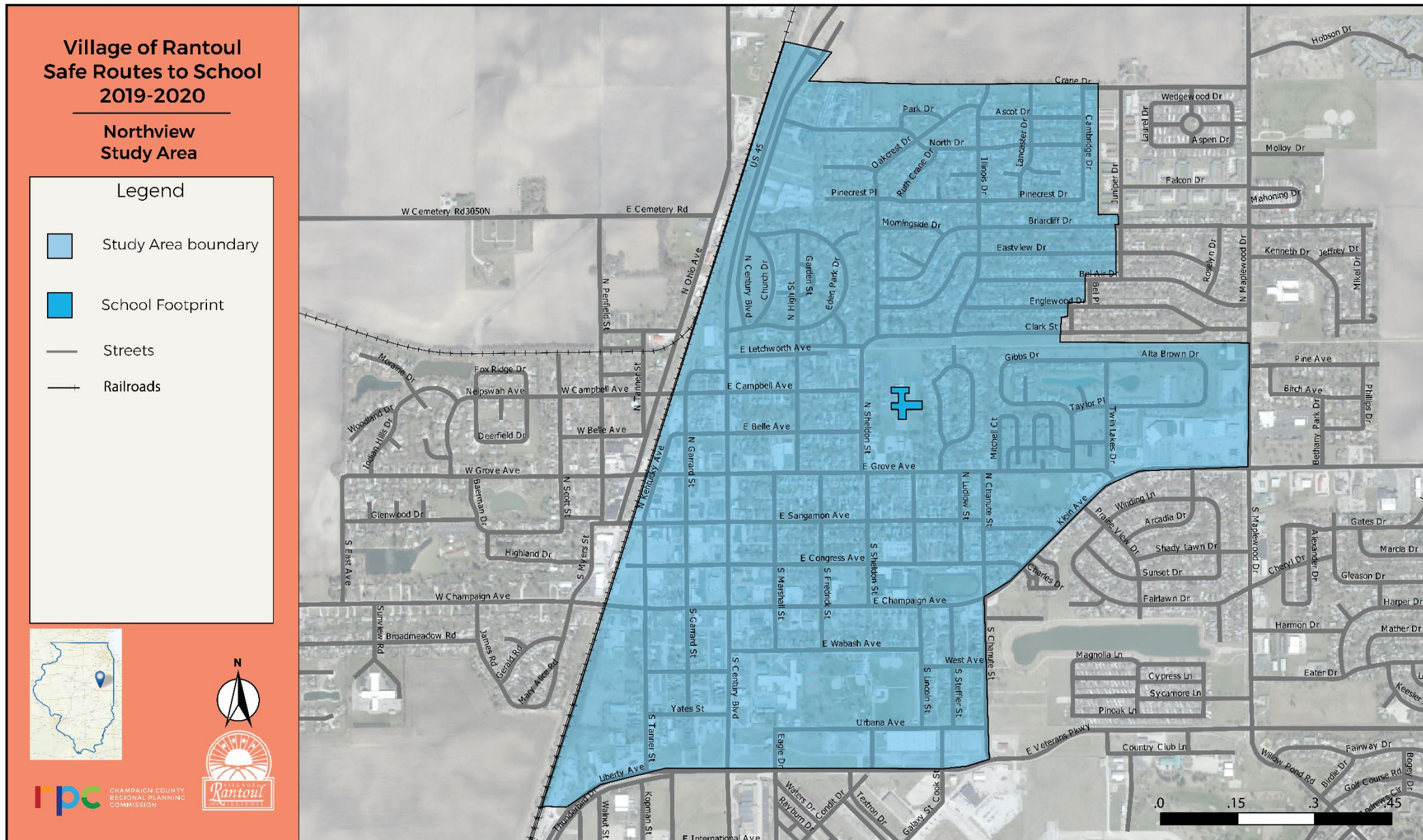
Northview Student Distance to School



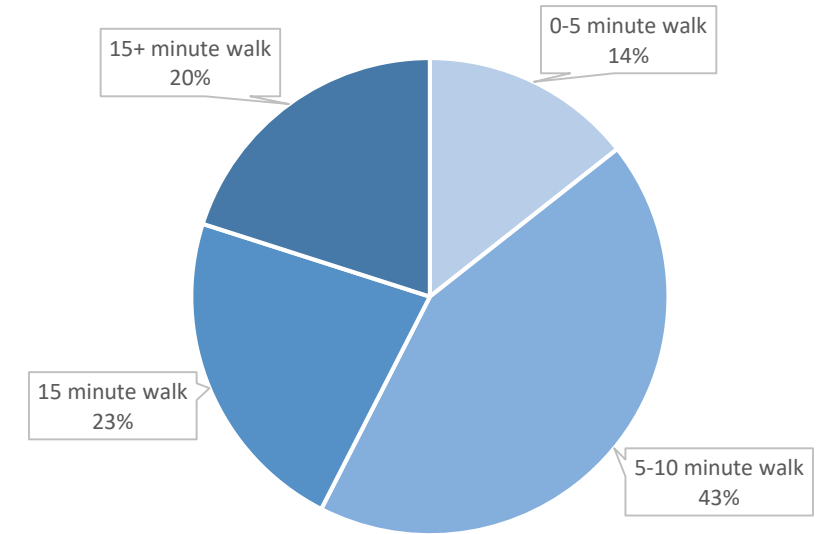
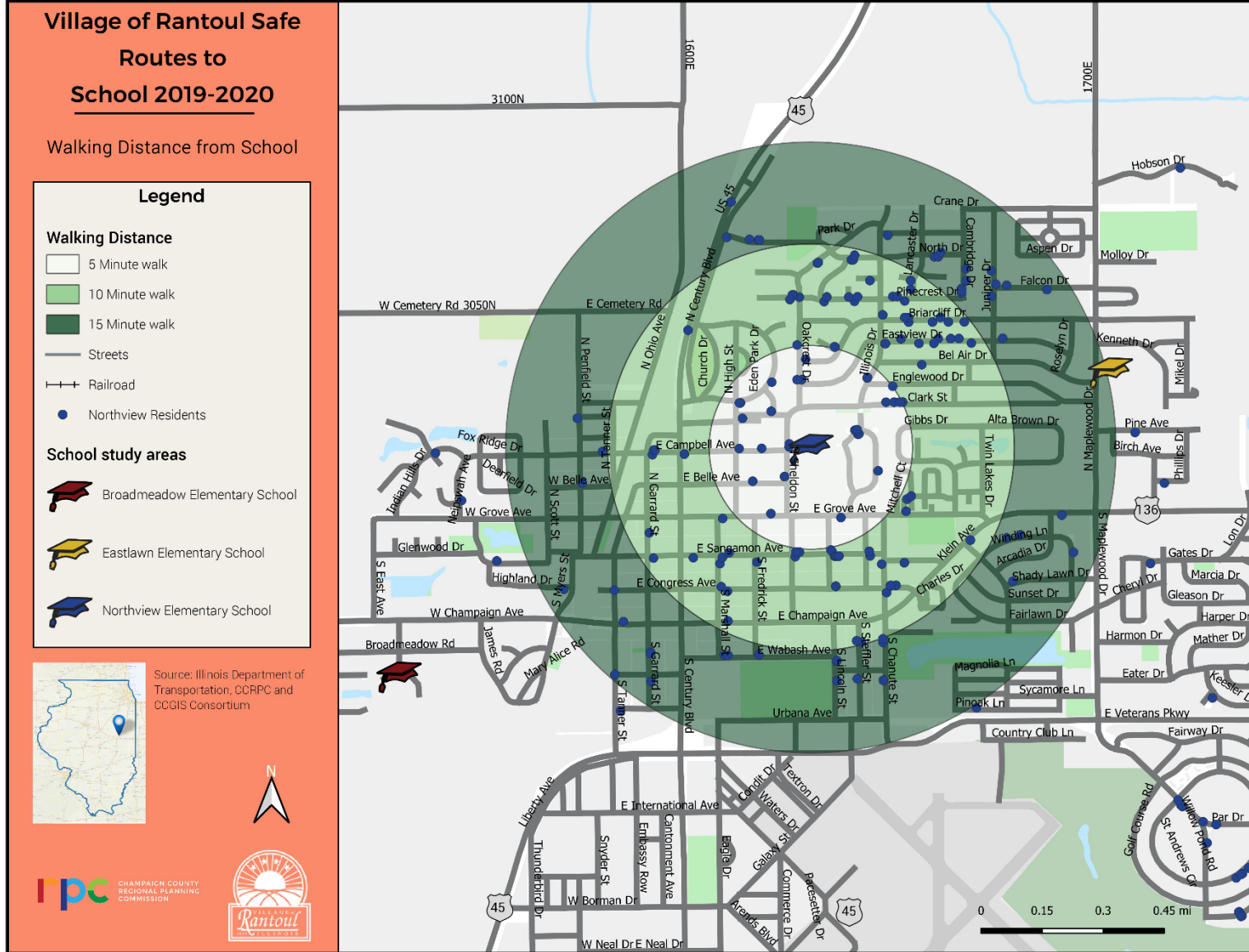
Northview Student Distance to School



Northview School Neighborhood



Northview Distance & Time to School

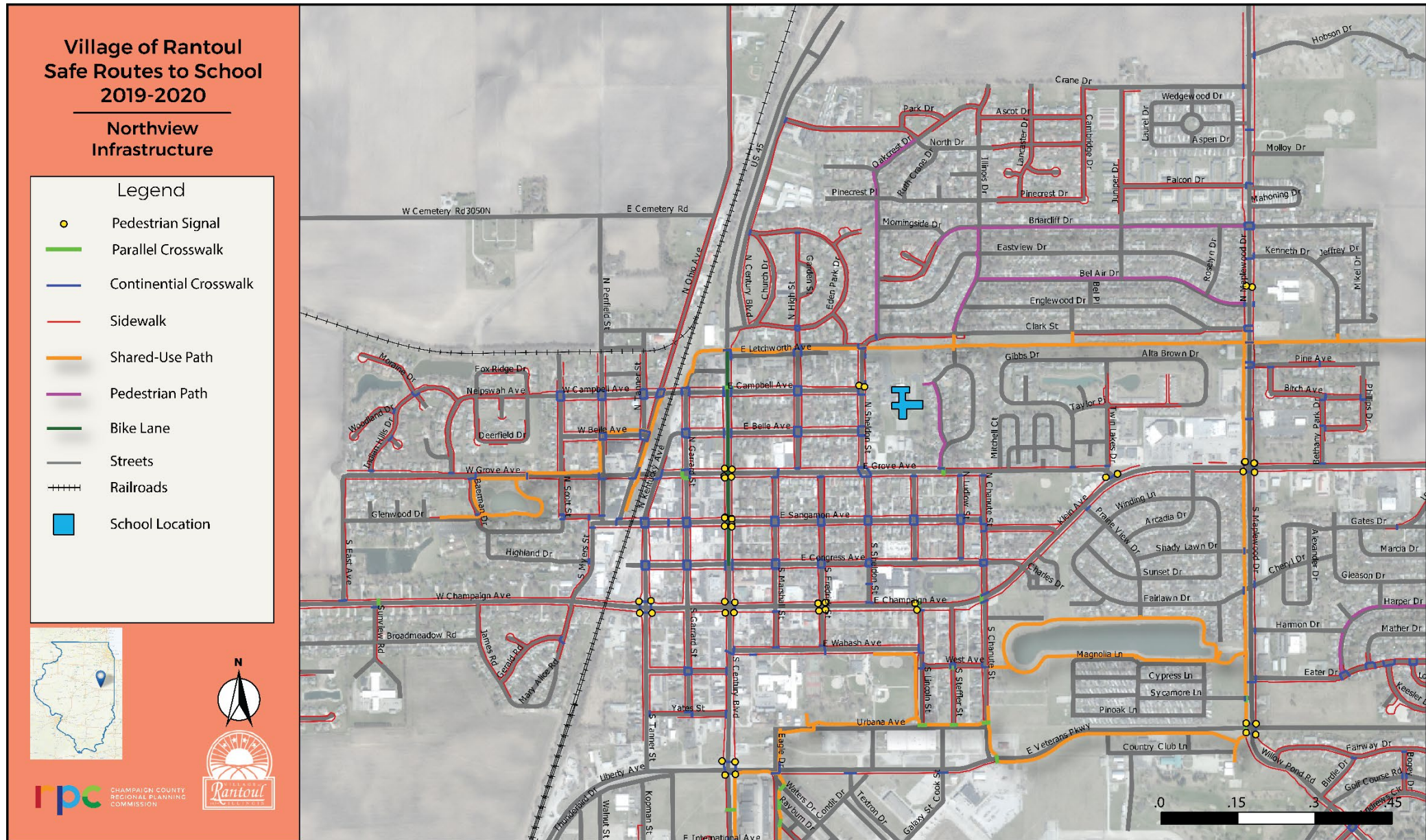


- **Over 57% of Northview students live within 10 minutes walking distance to Northview School.**
- **35% of these students need to cross Grove Ave.**
- **Barriers:**
 - US 136 (Champaign Ave)
 - US 45 (Century Blvd)
 - Grove Ave
 - Clark St
 - Sheldon St

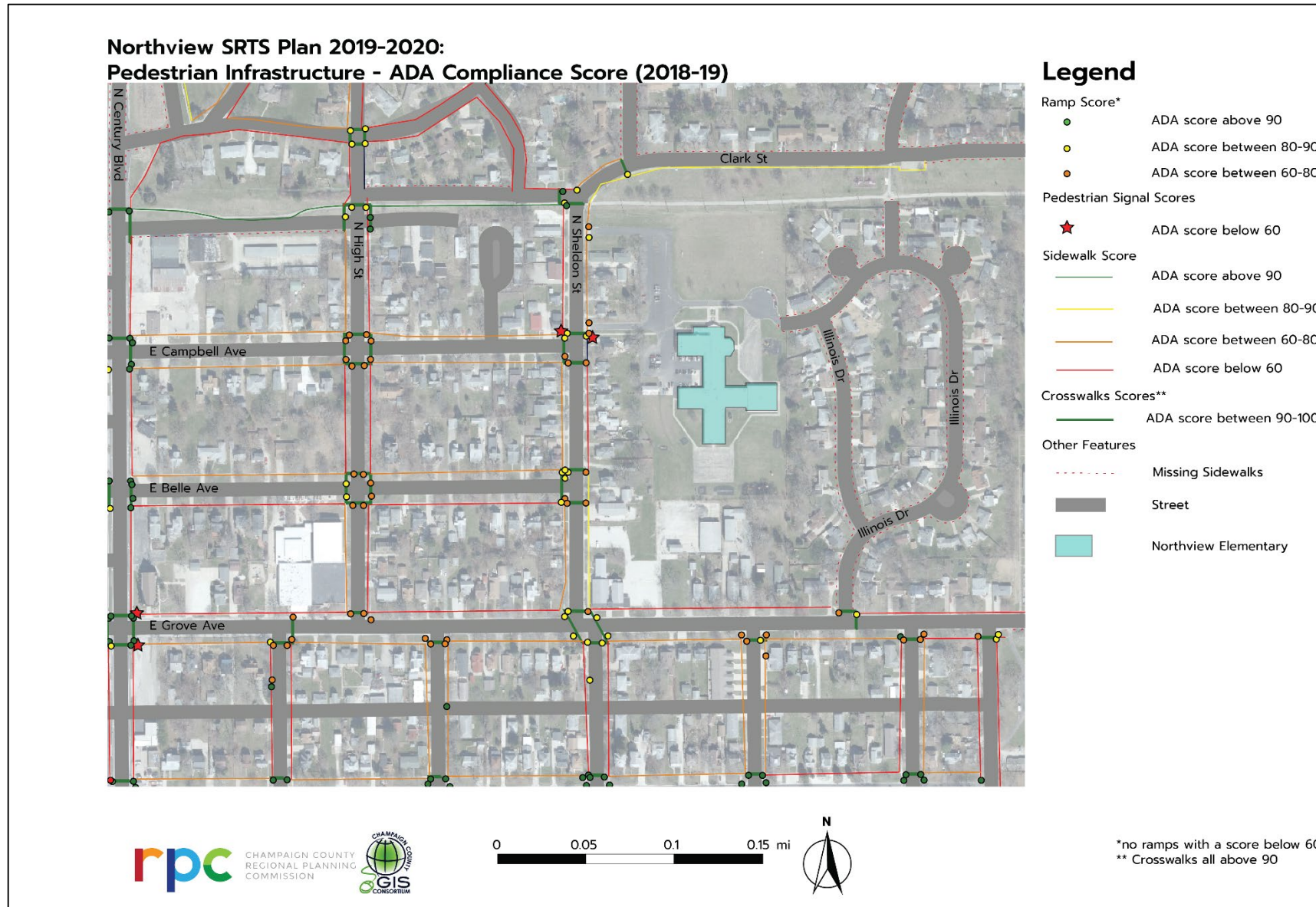
Northview Students within a Mile

Northview Elementary				
Grade	Students living 0 to 1/4 mile from school	Students living 1/4 to 1/2 mile from school	Students living 1/2 to 1 mile from school	Total
Kindergarten	7	18	15	40
First Grade	9	10	17	36
Second Grade	5	22	11	38
Third Grade	7	26	16	49
Fourth Grade	7	24	4	35
Fifth Grade	8	28	11	47
Total	43	128	74	245

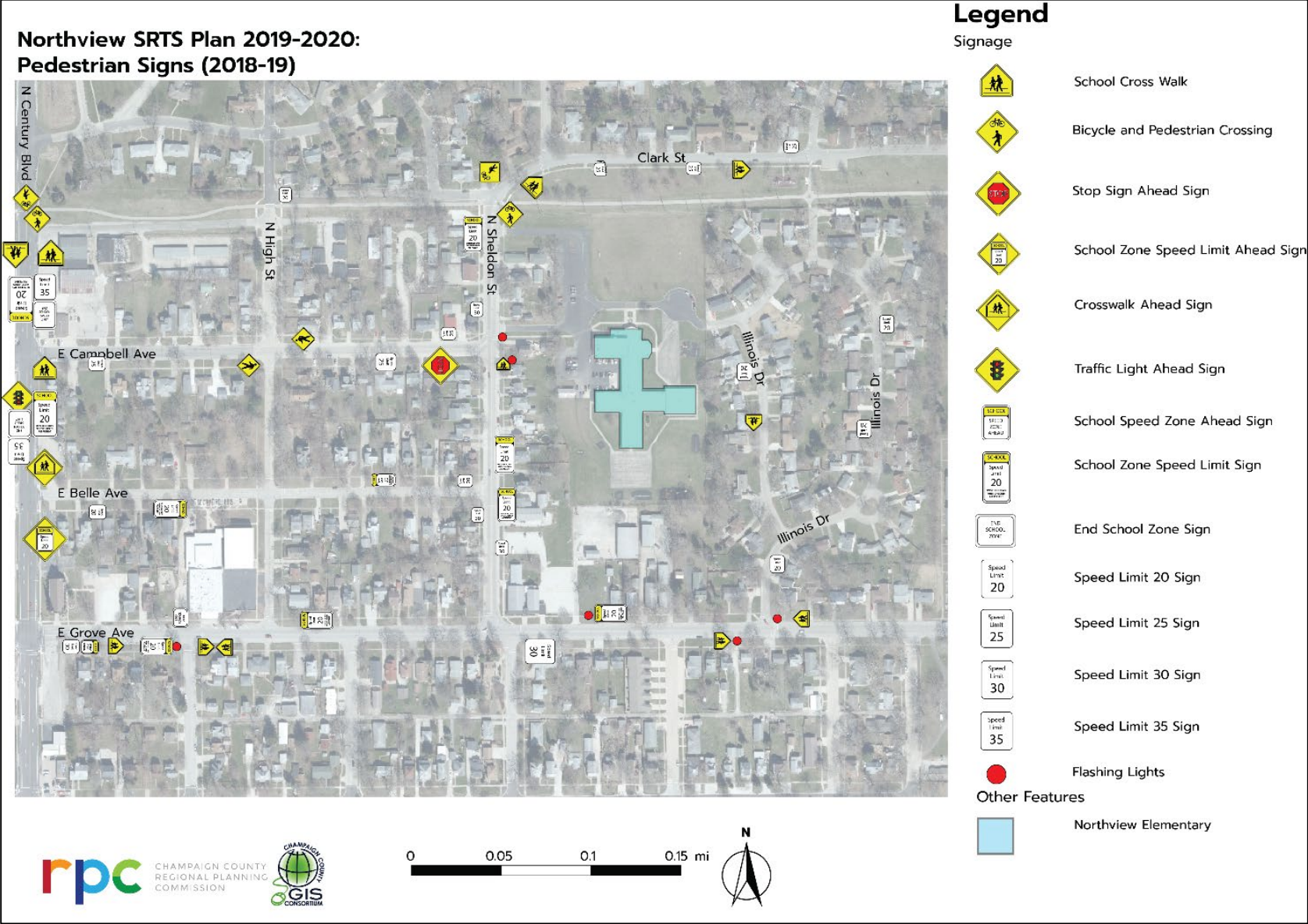
Northview Bike and Pedestrian Facilities



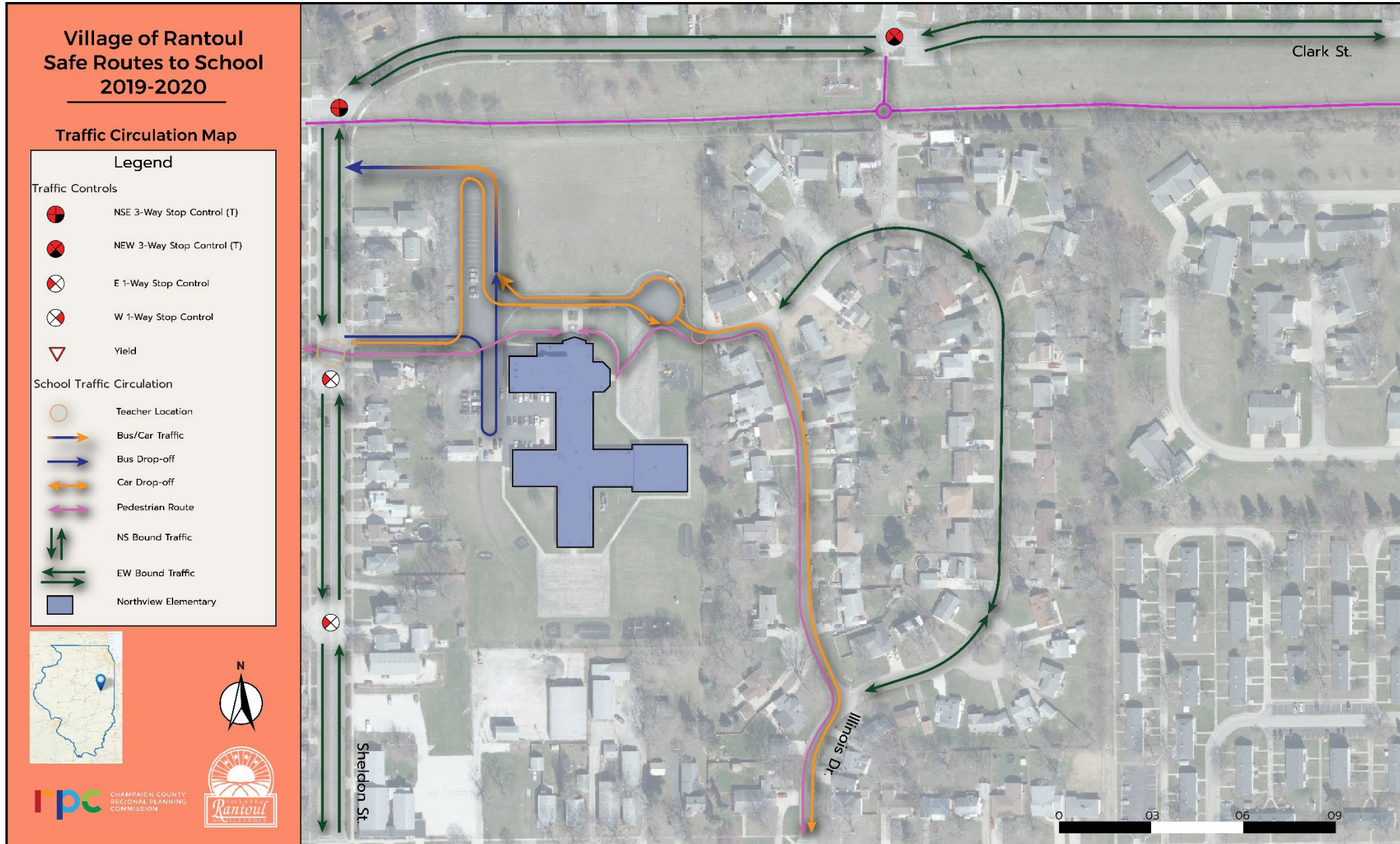
Northview Ped Compliance Scores



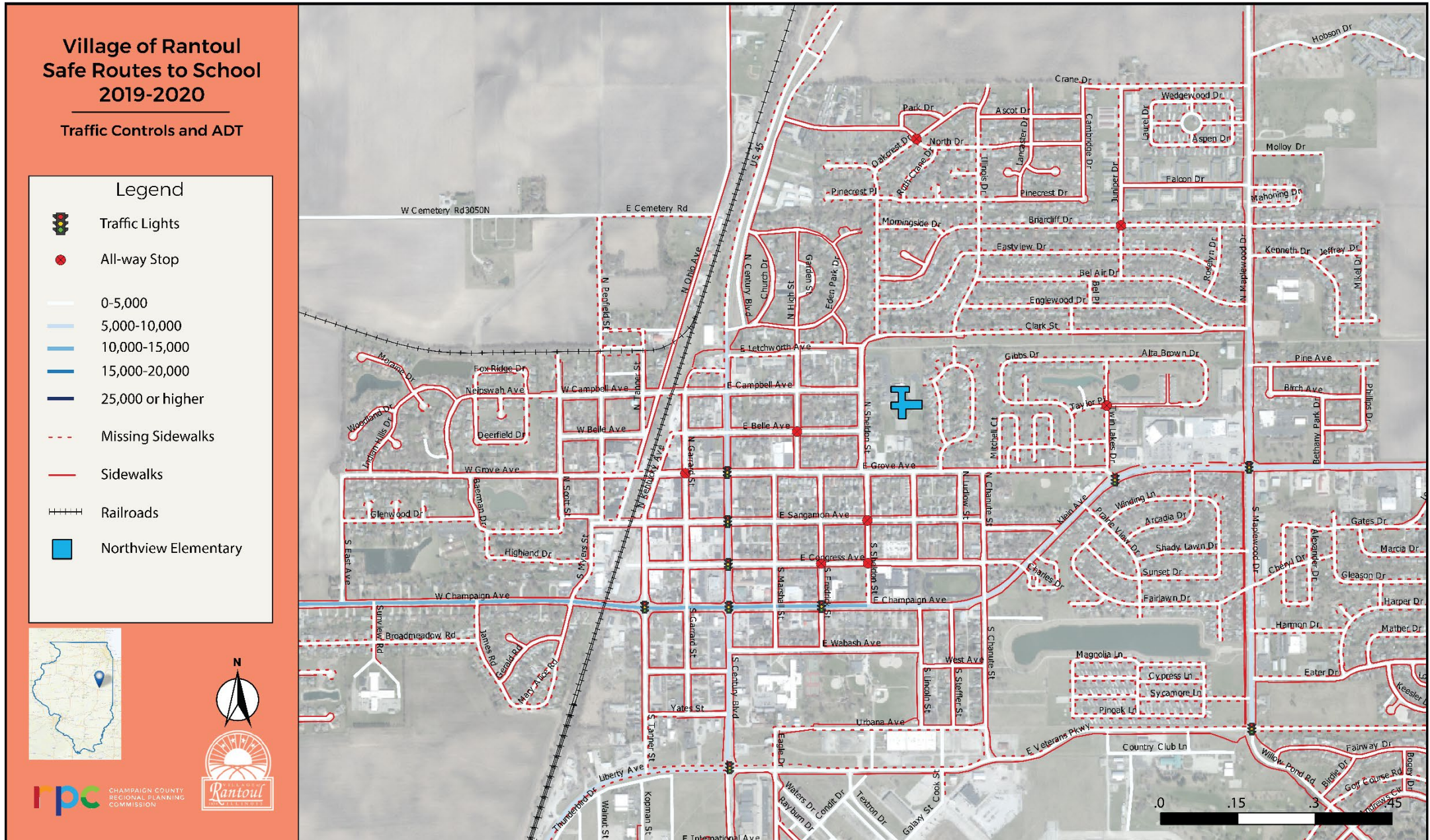
Northview Pedestrian Signs



Northview Traffic Circulation



Northview Traffic Controls and Counts



Northview Existing Mode Share

- **Family Vehicle = 43%**
- **Walk = 23%**
 - 47% of those walk from the west (Sheldon Street/Campbell Drive)
 - 53% of those walk from the east (Illinois Drive)
 - Of those, about 75% walked south, 25% walked east.
- **School Bus = 13%**
- **Carpool = 13%**
- **Other Bus = 4%**
- **Bike = 3%**
 - Source: Teacher Tallies, RPC Tallies



Bicycle and Pedestrian Crash Reports within a Mile of Northview School

Northview Pedestrian and Bicycle Crash Summary

Location

Year

Weather

Injury Level

Road Surface

Day of the Week

Time

Pedestrian Crash Summary

Maplewood/Grove

2013

Clear

B Injury

Dry

Sunday

8:43PM

Prairie View/Klein

2014

Clear

B Injury

Dry

Monday

6:05PM

Sycamore

2014

Clear

B Injury

Dry

Wednesday

6:08PM

Chanute/Champaign

2015

Clear

C Injury

Dry

Saturday

1:40PM

Maplewood/Fairlawn

2016

Clear

B Injury

Dry

Friday

12:25AM

Bicycle Crash Summary

Gerrard/Champaign

2013

Clear

B Injury

Dry

Saturday

10:55AM

Maplewood/Clark

2014

Clear

B Injury

Dry

Tuesday

2:50PM

Sheldon/Congress

2014

Clear

C Injury

Dry

Thursday

1:18PM

Maplewood/Grove

2016

Clear

B Injury

Dry

Saturday

9:58AM

Klein

2016

Cloudy

B Injury

Dry

Saturday

11:22AM

Prairie View/Fairlawn

2017

Clear

B Injury

Dry

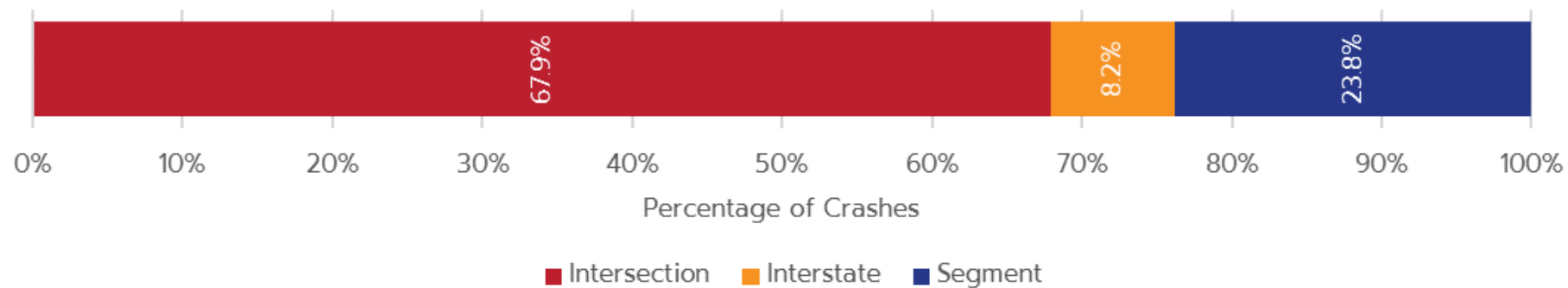
Friday

3:51PM



Rantoul Automobile Crashes

Crash Severity	2012	2013	2014	2015	2016	Total	%
Fatal	0	0	1	0	0	1	0%
A Injury	6	1	1	3	7	18	3%
B Injury	20	14	22	8	23	87	15%
C Injury	6	5	10	12	12	45	8%
No Injuries	85	86	98	69	94	432	74%
Total	117	106	132	92	136	583	100%



Student Survey Concerns (all schools)

- **Aggressive drivers**
- **Bike theft**
- **Busy streets to cross**
 - Maplewood Drive
 - US 45 (Century Blvd.)
 - US 136
- **Too far to walk**
- **Personal safety concerns**
- **Sibling/family influences**
- **Sidewalk/road condition**
- **Want more streetlights**



Tonight's Activities

- **Vision Board**

- Use post-it notes to provide your ideas for the future vision of transportation in Rantoul

- **Comment Card**

- Complete your comment card to provide more input on existing conditions and the future vision of transportation in Rantoul

- **Large Maps**

- Add your comments where you want to see transportation improvements in Rantoul

- **Survey**

- Complete transportation survey with Ana (U of I urban planning student)



Thank You!

- **Gabe Lewis**

- CCRPC Planner
- glewis@ccrpc.org
- 217-328-3313