

APPENDIX 11

PUBLIC INPUT AND PARTICIPATION REPORT

SUMMARY

During development of the Champaign County Land Resource Management Plan (LRMP), a variety of outreach efforts were used to collect information from an array of elected officials and the general public about important land use policy issues presently before the County. The results of these outreach efforts are summarized below.

Survey of Township and Municipal Representatives An 8-question survey was distributed to key township and municipal officials within the County. The survey solicited feedback regarding quality of life, growth, and other issues. The survey was open-ended, allowing for a wide range of responses.

Qualitative information collected in this survey provided information regarding the most important land use-related issues and most pressing concerns of the respondents. Survey responses generally affirm that land use and resource management issues of greatest concern to jurisdictions within the County are the same as those identified in the *LRMP Existing Conditions and Trends Report, Final Draft dated January 14, 2008*. Respondents most generally preferred that their home jurisdiction experience a slow and steady growth pattern.

Interviews: Key Representatives of Municipalities with Comprehensive Plan Staff interviewed key representatives of municipalities with an adopted comprehensive plan, collecting current information regarding recent development and expected developments to occur within municipal 1-1/2 mile extra-territorial jurisdictions (ETJ) and planned public sanitary sewer system expansions. Discussions and review of 'rural' and 'urban' areas within municipal ETJ areas were constructive and largely technical. The identified barriers, municipal comprehensive plans, and recent development trends provided the framework for approximating contiguous growth areas.

The LRMP goals and policies reviewed and formulated during Stage 2 will need to address the types of land use and resource management issues that are relevant and applicable to the 'urban' contiguous growth areas' developed through these interviews. The LRMP goals and policies should reinforce and support the needs and desires of urban areas to the extent that it is possible. Since overlapping jurisdictions are present, and it is undesirable to duplicate planning efforts, it is important for political entities to cooperatively discuss their development plans. The defined growth areas are not intended to confine or limit growth; rather, they provide benchmarks for coordinated, contiguous development.

Just as important, the LRMP goals and policies reviewed and formulated during Stage 2 will need to address the types of land use and resource management issues that are relevant and applicable to the 'rural' areas of the County.

Public Workshops Two public workshops in April 2008 provided an opportunity for the public input regarding public preferences related to the more controversial land use and resource management policy issues in the County. A total of 116 workshop participants responded to a multiple choice policy preference questionnaire and a series of group mapping exercises intended to tap participants' knowledge of local land use. The mapping exercises allowed for collection of further information regarding participants' perceptions related to land use and preservation of resources in the County.

Demographic information collected from workshop participants revealed that a 2:1 rural-to-urban ratio was achieved by workshop participants. Because the 116 workshop participants do not represent a 'random' sample of the County population, no direct inferences can be drawn regarding the preferences of the general County population with regard to their preferred land use policies.

The information collected at the public workshops will be a useful indicator of the preferred land use policies of those particular participants present at the workshop.

Participants' responses to 15-question policy preference questionnaire yielded these results:

County Policies Preferred by 50% or More of Workshop Participants

The following responses were selected by more than 50% of workshop participants and serve as a strong indicator regarding the types of County policies most preferred by those present at the workshop.

Generally Regarding Property Rights and Land Use

66% of respondents indicated agreement with the statement "County policies should support public outreach and education regarding the benefits of large, continuous areas of woodlands, pastures or grasslands and best management practices of maintaining these areas."

58% of respondents indicated the statement that most reflected their viewpoint was: "I want County policies that support more control over ensuring the protection of our agricultural lands, public and private natural areas, and the use of infrastructure, roadways, and water supply—I realize that these County policies would lead to more restrictions on what landowners can do with their land."

55% of respondents indicated agreement with the statement "County policies should support protection of large, continuous areas of woodlands, pastures, or grasslands."

54% of respondents indicated agreement with the statement "County policies should support acquisition of conservation easements through donation, purchase, or other privately funded means."

Generally Regarding Farmland Conversion

62% of respondents indicated agreement with the statement "County policies should limit development of farmland by adopting a voluntary Agricultural Preservation Areas program."

60% of respondents indicated agreement with the statement "County policies should minimize impacts to farmland by encouraging separation areas (buffers) between newly created non-farm land uses and existing farmland."

60% of respondents indicated agreement with the statement "County policies should support more restrictive regulations so that less farmland can be converted."

58% of respondents indicated agreement with the statement "County policies should maintain existing standards for development on soils currently identified as "best" prime farmland soils."

57% of respondents indicated agreement with the statement "A limited range of land uses should not be allowed on best prime farmland soils, but should be allowed on other less productive soils."

County Policies Preferred by 50% or More of Workshop Participants (continued)

Generally Regarding Rural Residential Development

70% of respondents indicated agreement with the statement "County policies should support greater limits on development within environmentally sensitive 100-year floodplain areas."

65% of respondents indicated agreement with the statement "County policies should support watershed planning at a regional level."

64% of respondents indicated agreement with the statement "County policies should support a lower limit on the number of new residential lots allowed 'as of right'. Examples of possible lower limits are: 1 new residential lot per 40 acres; or 2 new residential lots per 40 acres)."

Generally Regarding Additional Elements

65% of respondents indicated agreement with the statement "County policies should encourage rural drainage system maintenance methods that prevent erosion, sedimentation and negative environmental impacts."

51% of respondents indicated agreement with the statement "County policies should support the development of bikeways and/or multi-use paths in the County that connect popular activity center, recreation areas, and residential areas."

50% of respondents indicated agreement with the statement "County policies should encourage alternative energy sources/facilities with reduced impacts to viewsheds within the County."

County Policies Preferred by 30% - 49% of Workshop Participants

The following responses were selected by 25% - 49% of workshop participants and are indicative of a moderate level of support by workshop participants of various types of County policy statements.

Generally Regarding Property Rights and Land Use

38% of respondents indicated agreement with the statement "Land uses other than agriculture should not be accommodated in rural areas except in areas of less productive soils."

38% of respondents indicated agreement with the statement "Land uses other than agriculture should be accommodated in rural areas only if the disturbance of public or privately owned natural areas is minimized."

34% of respondents indicated agreement with the statement "County policies should support establishment of a minimum distance separation (a 'buffer') between established public parklands and public or private preserves and newly proposed adjacent land uses."

Generally Regarding Rural Residential Development

35% of respondents indicated agreement with the statement "County policies should prohibit all further rural residential subdivisions in the County."

33% of respondents indicated agreement with the statement "Along township roads that are at or above maximum traffic capacity, allow any number of new single family dwellings access to the township road if prior to construction the developer/owner/resident pays a proportionate impact fee for township road improvements. "

County Policies Preferred by 30% - 49% of Workshop Participants (continued)

Generally Regarding Additional Elements

49% of respondents indicated agreement with the statement "County policies should encourage drainageway maintenance methods that allow for continued natural biodiversity of a stream and that are cost effective at the same time."

47% of respondents indicated agreement with the statement "County policies should encourage minimizing the potential negative impacts on aquatic habitat, biodiversity (environmental health) and downstream flooding."

43% of respondents indicated agreement with the statement "County policies should support the development of bikeways and/or multi-use paths in the County that might be built on private lands, easements, or along stream corridors, provided that landowners have consented to this use of private land."

43% of respondents indicated agreement with the statement "County policies should support the development of bikeways and/or multi-use paths in the County that connect Champaign County Forest Preserve District lands with major population centers in the County."

40% of respondents indicated agreement with the statement "County policies should encourage drainageway maintenance practices which may include, though generally on an infrequent basis, high impact measures (e.g., dredging or clearcutting)."

41% of respondents indicated agreement with the statement "County policies should support the development of bikeways and/or multi-use paths in the County that connect public water bodies, public parks, and public open spaces."

39% of respondents indicated agreement with the statement "County policies should encourage the identification of scenic viewsheds within the County and develop a plan to minimize visual disturbance to identified scenic viewsheds."

37% of respondents indicated agreement with the statement "County policies should support the development of bikeways and/or multi-use paths in the County only on public property and rights-of-way."

32% of respondents indicated agreement with the statement "County policies should not support bikeway or multi-use paths."

30% of respondents indicated agreement with the statement "County policies should limit the siting of alternative energy generators to unobstrusive yet effective locations."

SURVEY OF TOWNSHIP AND MUNICIPAL REPRESENTATIVES

During January and February 2008, an 8-question survey was distributed to key township and municipal officials within the County. The survey solicited feedback regarding quality of life, growth, and other issues. The survey was open-ended, allowing for a wide range of response.

Responses Received from Township Representatives

Surveys were sent to the Township Supervisor and Township Highway Commissioner in all 30 townships. Additionally, surveys were provided to Township Plan Commission Chairs of those townships with a Plan Commission. Township representatives were initially invited to forward the survey to one additional township representative of their own choice.

In total, 61 surveys were mailed to township officials and 28 surveys were returned (a response rate of approximately 45%). Representatives of 20 of the 30 townships responded to the survey. A qualitative summary of responses follows:

Provided below is a qualitative summary of responses to Survey Questions #1 - #7 received from 26 representatives 18 townships:

Question 1: What do you think residents of [township] like most about living in [township] ?
responses summarized by general content:

- rural lifestyle and quiet serene setting - 10 respondents (38%)
- location and proximity to urban & recreation amenities - 10 respondents (38%)
- prefer small community / community pride - 6 respondents (23%)
- school system - 3 respondents (11.5%)
- lower taxes - 2 respondents (7.5%)
- well maintained roads - 2 respondents (7.5%)
- less traffic - 2 respondents (7.5%)

Question 2: What do you think residents of [township] like least about living in [township]?
responses summarized by general content:

- urban sprawl – 7 respondents (27%)
- government regulations / taxes – 5 responses (19%)
- distance / access to stores or amenities – 4 responses (15%)
- road maintenance issues – 4 responses (15%)
- flooding – 2 responses (8%)
- adequate water supply – 2 responses (8%)
- like everything – 1 response (3.5%)
- taverns – 1 response (3.5%)

Question 3: What do you think residents of [township] like least about living in [township]?
responses summarized by general content:

- funding road maintenance - 14 responses (54%)
- funds generally / taxes - 7 responses (27%)
- government interference – 7 responses (27%)
- land use – 5 responses (19%)
- farmland preservation - 2 responses (8%)
- drainage – 2 responses (8%)
- finding people to represent twp government – 1 response (3.5%)

Question 4: What do you think will be important issues or concerns that future [township] officials will face over the next 15 or 20 years?

responses summarized by general content:

- Funding more road maintenance - 12 responses (46%)
- Urban sprawl – 10 responses (38.5%)
- Intergovernmental cooperation - 6 responses (23%)
- Same Issues and concerns as listed in Question 3 - 4 responses (15%)
- Drainage – 4 responses (15%)
- General funding / taxes - 2 responses (8%)
- Water supply quality – 1 response (3.5%)

continued on following page

Responses to Township Official Survey - Questions 5, 6, and 7

Regarding the population, between 1990 and 2000, there was a...	Question 5. Do you think this overall population [increase/decrease] has impacted residents of [township]? How?	Question 6. Do you prefer that the population of [township] grow significantly, stay about the same, or significantly decrease over the next several years?	Question 7. Generally speaking, do you think most residents of [township] wish to see the population of [township] grow, stay about the same, or decrease over the next several years?
1) 15.6% increase in unincorporated Champaign Twp from 6,969 people to 7,941 people.	<ul style="list-style-type: none"> Yes. Prior to City annexing large areas of Champaign Twp, residents were seeing a reduction in taxes they paid to Champaign Twp. 	<ul style="list-style-type: none"> My preference would be to see steady, controlled growth. 	<ul style="list-style-type: none"> It is likely they preferred the level of growth we had prior to the City of Champaign annexing large areas.
2) 12% increase in unincorporated Tolono Twp from 442 people to 493 people.	<ul style="list-style-type: none"> No 	<ul style="list-style-type: none"> It's o.k. for population to grow- if it does NOT take away from good farmland 	<ul style="list-style-type: none"> Stay about the same- because many residents are here because they wanted a small town
3) 11% increase in unincorporated Somer Twp from 1,282 people to 1,421 people.	<ul style="list-style-type: none"> No No 	<ul style="list-style-type: none"> I have no preference. Grow or stay the same. 	<ul style="list-style-type: none"> Stay the same Stay the same
4) 9% increase in unincorporated Crittenden Twp from 315 people to 345 people.	<ul style="list-style-type: none"> No No 	<ul style="list-style-type: none"> Stay about the same Stay about the same 	<ul style="list-style-type: none"> Stay the same Stay about the same
5) 7% increase in unincorporated South Homer Twp from 360 people to 385 people.	<ul style="list-style-type: none"> I think it has a good impact it has brought new ideas into community. This means more funding for local governments, School District and Fire Dept. 	<ul style="list-style-type: none"> A slow steady growth so the infrastructure can be developed to take care of the growth. The people moving in need to remember they have moved into an agricultural environment and in the spring and fall the pace will be hectic. 	<ul style="list-style-type: none"> I think the most of the residents would like to see well managed attractive growth take place.
6) 4% increase in unincorporated St. Joseph Twp from 1,642 people to 1,699 people.	<ul style="list-style-type: none"> The growth has not impacted the township much. 	<ul style="list-style-type: none"> Personally, I prefer that it will stay the same. 	<ul style="list-style-type: none"> Generally speaking, I think that the farmers would like it to stay the same and developers would like it to grow. This is the standard problem that we have faced all along.
7) 4% increase in unincorporated Hensley Twp from 1,073 people to 1,111 people.	<ul style="list-style-type: none"> Many residents reside on 5-10 acre tracts. Land used vs. # of residents. somewhat: ground availability; drainage; increased road use We lost Baytowne, picked up Thorobred. 	<ul style="list-style-type: none"> Stay the same Stay about the same, or significantly decrease 0 Growth, I am 40,000 to 100,000 short of enough bales of hay to satisfy our needs of last year. Where do you suggest we find 8,000-20,000 acres? 	<ul style="list-style-type: none"> Stay the same Stay about the same, or significantly decrease Generally speaking, most would agree, stay the same, unless if the "City" should choose to annex Western Hills, then they should choose to decrease.
8) 4% increase in unincorporated Harwood Twp from 491 people to 510 people.	<ul style="list-style-type: none"> no 	<ul style="list-style-type: none"> same 	<ul style="list-style-type: none"> stay same

Responses to Township Official Survey - Questions 5, 6, and 7 (continued)

Regarding the population, between 1990 and 2000, there was a...	Question 5. Do you think this overall population [increase/decrease] has impacted residents of [township]? How?	Question 6. Do you prefer that the population of [township] grow significantly, stay about the same, or significantly decrease over the next several years?	Question 7. Generally speaking, do you think most residents of [township] wish to see the population of [township] grow, stay about the same, or decrease over the next several years?
9) 2.2 % increase in unincorporated Sadorus Twp from 318 people to 325 people.	<ul style="list-style-type: none"> Probably to the good. 	<ul style="list-style-type: none"> I would like to see moderate growth to help maintain a needed tax revenue 	<ul style="list-style-type: none"> Most said a moderate growth
10) 2 % increase in unincorporated Raymond Twp from 279 people to 284 people.	<ul style="list-style-type: none"> no- most were young couples starting families 	<ul style="list-style-type: none"> stay about the same 	<ul style="list-style-type: none"> stay about the same
11) 0.4% increase in unincorporated Philo Twp from 452 people to 454 people.	<ul style="list-style-type: none"> No 	<ul style="list-style-type: none"> same Stay about the same or modestly increase. 	<ul style="list-style-type: none"> same to some growth Stay about the same
12) no shift in unincorporated Stanton Twp . 704 people.	<ul style="list-style-type: none"> There will be a continued drop because larger farms. 	<ul style="list-style-type: none"> Stay the same 	<ul style="list-style-type: none"> Stay the same
13) 0.4% decrease in unincorporated Scott Twp from 705 people to 702 people.	<ul style="list-style-type: none"> No 	<ul style="list-style-type: none"> Either way if Scott Township grows there could be more tax money, however there will be loss of farmland. 	<ul style="list-style-type: none"> Prefer to stay the same. We don't want to lose farmland.
14) 2% decrease in unincorporated Mahomet Twp from 5,337 people to 5,236 people.	<ul style="list-style-type: none"> NO! No impact- Not great enough to cause problem. Nahomet Twp is not a coterminis township, so has very little effect on budgeting. 	<ul style="list-style-type: none"> None of the above. We want growth to be slow and steady with QUALITY Stay same to slightly increase 	<ul style="list-style-type: none"> Grow with quality Stay about the same
15) 5% decrease in unincorporated Condit Twp from 318 people to 301 people.	<ul style="list-style-type: none"> yes, decreases revenue 	<ul style="list-style-type: none"> stay the same 	<ul style="list-style-type: none"> stay the same
16) 6% decrease in unincorporated Ludlow Twp from 669 people to 628 people.	<ul style="list-style-type: none"> I think it was positive in that we have had more new homes built in rural areas & have had a major reduction in occupancy in our 1 major trailer park. 	<ul style="list-style-type: none"> Any major growth would be in the west and north of Rantoul. It should be housing and /or light industry. Ludlow Village has one new housing development in the part 2 or 3 years that is growing slowly, I think both of these would have a positive effect on the Ludlow Township. 	<ul style="list-style-type: none"> Again, over 80% of Ludlow township residents live in Rantoul City limits. I tihnk it would not be a factor to most residents.
17) 7.7% decrease in unincorporated Colfax Twp from 271 people to 250 people.	<ul style="list-style-type: none"> No 	<ul style="list-style-type: none"> Stay about the same. 	<ul style="list-style-type: none"> Stay about the same.

Responses to Township Official Survey - Questions 5, 6, and 7 (continued)

Regarding the population, between 1990 and 2000, there was a...	Question 5. Do you think this overall population [increase/decrease] has impacted residents of [township]? How?	Question 6. Do you prefer that the population of [township] grow significantly, stay about the same, or significantly decrease over the next several years?	Question 7. Generally speaking, do you think most residents of [township] wish to see the population of [township] grow, stay about the same, or decrease over the next several years?
18) 9% decrease in unincorporated Ayers Twp from 141 people to 129 people.	<ul style="list-style-type: none"> ▪ Not really 	<ul style="list-style-type: none"> ▪ stay about the same, hate to see new houses built on farm ground 	<ul style="list-style-type: none"> ▪ grow, for more tax money and able to do more
19) 14% decrease in unincorporated Kerr Twp from 200 people to 173 people.	<ul style="list-style-type: none"> ▪ Not in a major way 	<ul style="list-style-type: none"> ▪ Obviously, grow significantly 	<ul style="list-style-type: none"> ▪ In my opinion, stay about the same.
20) 19% decrease in unincorporated Brown Twp from 116 people to 94 people.	<ul style="list-style-type: none"> ▪ I think this figure is incorrect. If it is correct- We have grown since 2000. 	<ul style="list-style-type: none"> ▪ Neither, Just grow at a slow or acceptable pace. 	<ul style="list-style-type: none"> ▪ grow

continued on following page

Response from Township Representatives

Question 8. Which of the following issues do you think that most
[----] Twp residents generally consider as important
or problematic within [----] Twp unincorporated
areas?

[check all that apply]

26 responses were received from representatives of 18
townships, as follows:

	Ayers	Brown	Champaign City	Champaign	Colfax	Compromise	Condit	Crittenden	Cunningham	East Bend	Harwood	Hensley	Kerr	Ludlow	Mahomet	Newcomb	Ogden	Pesotum	Philo	Rantoul	Raymond	Sadorus	Scott	Sidney	Somer	South Homer	St Joseph	Stanton	Tolono	Urbana
Conservation of farmland																														
Residential development in outlying areas																														
Increasing traffic & road maintenance in unincorporated areas																														
Conservation of natural resources in unincorporated areas																														
Sufficient parks & recreation opportunities near home																														
Properly maintained onsite wastewater ...systems																														
Adequate groundwater availability																														
Availability of renewable energy resources (e.g., wind power)																														
Maintenance of drainage systems																														
Non-farm traffic conflicts with farm traffic on rural township roads																														
Recreational trails																														
Water quality																														
Air quality																														
Continuing development on municipal fringes & piecemeal development																														
Convenient access to commercial agricultural support services																														
Isolated rural residential development																														
Conversion of farmland																														
Blighted or rundown neighborhoods																														

2 or more responses

1 response

no response

Responses Received from Municipal Representatives

Surveys were sent to the Mayor or President and to the Clerk of all 24 municipalities within the County. Those officials were invited to forward the survey to one additional municipal representative of their own choice.

In total, 48 surveys were mailed to municipal officials and nine surveys representing nine municipalities were returned (a response rate of approximately 18%). Provided below is a qualitative summary of responses to Survey Questions #1 - #7 received from nine representatives nine municipalities:

Question 1: What do you think residents of [municipality] like most about living in [municipality] ?
responses summarized by general content:

- Low Crime/Safety – 5 respondents (56%)
- Schools – 4 respondents (44%)
- Location – 4 respondents (44%)
- Small Town Living – 3 respondents (33%)
- other - 1 respondent each (11%)
Quiet; Churches; quality and scope of services that the Village provides to its citizens for a reasonable cost; friendly neighbors

Question 2: What do you think residents of [municipality] like least about living in [municipality]?
responses summarized by general content:

- High property taxes – 3 respondents (33%)
- lack of amenities (shops & services) - 6 respondents (67%)
- other – 1 respondent each (11%)
housing costs; lack of employment; open space restrictions and rail road division with no 24-7 access to RT 45; drainage

Question 3: What do you think residents of [municipality] like least about living in [municipality]?
responses summarized by general content:

- public sewer & public water supply & utility infrastructure - 5 respondents (56%)
- drainage concerns – 3 respondents (33%)
- road maintenance & parking – 3 respondents (33%)
- blight & nuisance concerns – 3 respondents (33%)
- attracting new growth – 3 respondents (33%)
- park improvements – 2 respondents (22%)
- other – 1 respondent (11%)
cost of new growth on long-term residents

The responses received from municipal representatives to Questions 4 – 7 are shown below:

Foosland	
4) What do you think will be important issues or concerns that future ____ officials will face over the next 15 or 20 years?	<ul style="list-style-type: none"> water and sewer systems and treatment
5) Between 1990 and 2000, there was a 32% decrease in the population of Foosland (from 132 people to 90 people). Do you think this overall population shift has impacted Foosland residents? How?	<ul style="list-style-type: none"> yes, lower income from taxes and mft funds.
6) Do you prefer that the population of ____ grow significantly, stay about the same, or significantly decrease over the next several years?	<ul style="list-style-type: none"> increase slightly
7) Generally speaking, do you think most residents of ____ wish to see the population of ____ grow, stay about the same, or decrease over the next several years?	<ul style="list-style-type: none"> increase slightly
Gifford	
4) What do you think will be important issues or concerns that future ____ officials will face over the next 15 or 20 years?	<ul style="list-style-type: none"> Expense of water and sewer repairs
5) Between 1990 and 2000, there was a 1% decrease in the population of Gifford (from 845 people to 838 people). Do you think this overall population shift has impacted Gifford residents? How?	<ul style="list-style-type: none"> Yes. Not receiving our fair share of tax money. The decrease was due to the INADEQUATE count of the census bureau.
6) Do you prefer that the population of ____ grow significantly, stay about the same, or significantly decrease over the next several years?	<ul style="list-style-type: none"> Stay about the same
7) Generally speaking, do you think most residents of ____ wish to see the population of ____ grow, stay about the same, or decrease over the next several years?	<ul style="list-style-type: none"> Stay about the same
Ludlow	
4) What do you think will be important issues or concerns that future ____ officials will face over the next 15 or 20 years?	<ul style="list-style-type: none"> Upgrading water mains, septic systems failing in Ludlow.
5) Between 1990 and 2000, there was 1% increase in the population of Ludlow (from 323 people to 324people). Do you think this overall population shift has impacted Ludlow residents? How?	<ul style="list-style-type: none"> No impact, I think we need a 20% to 30% increase
6) Do you prefer that the population of ____ grow significantly, stay about the same, or significantly decrease over the next several years?	<ul style="list-style-type: none"> Growing to around 500 population

7) Generally speaking, do you think most residents of ____ wish to see the population of ____ grow, stay about the same, or decrease over the next several years?	<ul style="list-style-type: none"> ▪ Grow to around 500
---	--

Mahomet

4) What do you think will be important issues or concerns that future ____ officials will face over the next 15 or 20 years?	<ul style="list-style-type: none"> ▪ Hold line on taxes, diversity tax base- more commercial
5) Between 1990 and 2000, there was a 35% increase in the population of Mahomet (from 5,851 people to 7,903 people). Do you think this overall population shift has impacted Mahomet residents? How?	<ul style="list-style-type: none"> ▪ influx of urban residents demanding increase services on a small town.
6) Do you prefer that the population of ____ grow significantly, stay about the same, or significantly decrease over the next several years?	<ul style="list-style-type: none"> ▪ Grow, but more commercial
7) Generally speaking, do you think most residents of ____ wish to see the population of ____ grow, stay about the same, or decrease over the next several years?	<ul style="list-style-type: none"> ▪ I don't [think] they care, unless it means a decrease in taxes.

Philo

1) What do you think residents of ____ like most about living in ____?	<ul style="list-style-type: none"> ▪ safety,. convenience to C-U
2) What do you think residents of ____ like least about living in ____?	<ul style="list-style-type: none"> ▪ need to "run into town" anytime you need something beyond gas, milk, bread, liquor, or lottery tickets
3) In your opinion, what important issues or concerns are ____ officials currently facing?	<ul style="list-style-type: none"> ▪ sewage ▪ need for bathroom/concession stand @ heavily used baseball diamond
4) What do you think will be important issues or concerns that future ____ officials will face over the next 15 or 20 years?	<ul style="list-style-type: none"> ▪ how MUCH development- that is balancing growth w/ small-town quality of life
5) Between 1990 and 2000, there was a 28% increase in the population of Philo (from 1,028 people to 1,314 people). Do you think this overall population shift has impacted Philo residents? How?	<ul style="list-style-type: none"> ▪ not a real noticeable impact. A lot more wear and tear on village "streets" and roads
6) Do you prefer that the population of ____ grow significantly, stay about the same, or significantly decrease over the next several years?	<ul style="list-style-type: none"> ▪ MODERATE growth
7) Generally speaking, do you think most residents of ____ wish to see the population of ____ grow, stay about the same, or decrease over the next several years?	<ul style="list-style-type: none"> ▪ tough to say- I believe what I wrote in #6 is probably closer to residents opinion- MODERATE GROWTH

Rantoul	
1) What do you think residents of ____ like most about living in ____?	<ul style="list-style-type: none"> ▪ The quality and scope of services that the Village provides to its citizens for a reasonable cost
2) What do you think residents of ____ like least about living in ____?	<ul style="list-style-type: none"> ▪ Relatively high property taxes; lack of diverse commercial development (e.g., shopping, restaurants, movie theater, etc.) that requires citizens to travel to other communities for goods and services
3) In your opinion, what important issues or concerns are ____ officials currently facing?	<ul style="list-style-type: none"> ▪ Trying to spur economic development by attracting new business and industrial prospects while also trying to protect the viability of those which are already located in the community; attracting new residential development; addressing blighted properties
4) What do you think will be important issues or concerns that future ____ officials will face over the next 15 or 20 years?	<ul style="list-style-type: none"> ▪ Continuing with the process of attracting commercial and residential development and properly managing this growth (e.g. expanding and maintaining municipal services, infrastructure, etc.); addressing the needs that arise as the result of shifting demographics
5) Between 1990 and 2000, there was a 25% decrease in the population of Rantoul (from 17,212 people to 12,857 people). Do you think this overall population shift has impacted Rantoul residents? How?	<ul style="list-style-type: none"> ▪ The decrease has affected the citizens first by reducing the amounts of funding provided to the Village from the state on the basis of population; this decrease has led officials to identify areas to trim spending and/or areas to raise additional revenue to offset the loss. This impacts residents through reduced services and increased taxes and fees. Rantoul has also experienced a shift in demographics (increased minority population, increase in lower-income residents) that has placed additional demands upon the Village.
6) Do you prefer that the population of ____ grow significantly, stay about the same, or significantly decrease over the next several years?	<ul style="list-style-type: none"> ▪ I would prefer to see steady population growth, provided that such growth was met with smart management; a significant influx of new residents could otherwise place burdens upon the Village if officials are not adequately prepared to accommodate the demands placed upon us by growth
7) Generally speaking, do you think most residents of ____ wish to see the population of ____ grow, stay about the same, or decrease over the next several years?	<ul style="list-style-type: none"> ▪ I believe most residents would prefer steady growth

Royal	
1) What do you think residents of ____ like most about living in ____?	<ul style="list-style-type: none"> ▪ Low crime, friendly neighbors, good schools
2) What do you think residents of ____ like least about living in ____?	<ul style="list-style-type: none"> ▪ No grocery store, no gas station, taxes
3) In your opinion, what important issues or concerns are ____ officials currently facing?	<ul style="list-style-type: none"> ▪ Funding of a generator & parking lot. Comprehensive drainage. Overhead (costly repairs)
4) What do you think will be important issues or concerns that future ____ officials will face over the next 15 or 20 years?	<ul style="list-style-type: none"> ▪ Taxes, water demands, new schools
5) Between 1990 and 2000, there was a 29% increase in the population of Royal (from 217 people to 279 people). Do you think this overall population shift has impacted Royal residents? How?	<ul style="list-style-type: none"> ▪ The actual gain was misleading, a wrong map was signed in 1980. The gain was about 1/2 that amount. The assumed increase helped by receiving the actual tax dollars we were due.
6) Do you prefer that the population of ____ grow significantly, stay about the same, or significantly decrease over the next several years?	<ul style="list-style-type: none"> ▪ Stay at about the same rate. Slow and steady. Currently only 3 lots a vacant.
7) Generally speaking, do you think most residents of ____ wish to see the population of ____ grow, stay about the same, or decrease over the next several years?	<ul style="list-style-type: none"> ▪ I believe stay at the same rate. Being surrounded by farm ground makes developing difficult. They (the farm owners) want to continue farming, not house building.

Savoy	
1) What do you think residents of ____ like most about living in ____?	<ul style="list-style-type: none"> ▪ Being Close to big city amenities and having lower taxes.
2) What do you think residents of ____ like least about living in ____?	<ul style="list-style-type: none"> ▪ Open space restrictions and rail road division with no 24-7 access to RT 45.
3) In your opinion, what important issues or concerns are ____ officials currently facing?	<ul style="list-style-type: none"> ▪ Road repairs and infrastructure upgrades. Improving parks.
4) What do you think will be important issues or concerns that future ____ officials will face over the next 15 or 20 years?	<ul style="list-style-type: none"> ▪ Local growth with increased business opportunities.
5) Between 1990 and 2000, there was a 68% increase in the population of Savoy (from 2,674 people to 4,476 people). Do you think this overall population shift has impacted Savoy residents? How?	<ul style="list-style-type: none"> ▪ increased opportunities in Savoy. As it grows there are more business and recreational opportunities.
6) Do you prefer that the population of ____ grow significantly, stay about the same, or significantly decrease over the next several years?	<ul style="list-style-type: none"> ▪ Sustained, logical growth
7) Generally speaking, do you think most residents of ____ wish to see the population of ____ grow, stay about the same, or decrease over the next several years?	<ul style="list-style-type: none"> ▪ Mixed feelings with the majority in favor of growth.

St. Joseph	
1) What do you think residents of ____ like most about living in ____?	<ul style="list-style-type: none"> ▪ Location, Education and Safety
2) What do you think residents of ____ like least about living in ____?	<ul style="list-style-type: none"> ▪ Drainage
3) In your opinion, what important issues or concerns are ____ officials currently facing?	<ul style="list-style-type: none"> ▪ Stormwater management
4) What do you think will be important issues or concerns that future ____ officials will face over the next 15 or 20 years?	<ul style="list-style-type: none"> ▪ More school growth, stormwater management, upgrading sewer plant
5) Between 1990 and 2000, there was a 42% increase in the population of St. Joseph (from 2,052 people to 2,912 people). Do you think this overall population shift has impacted St. Joseph residents? How?	<ul style="list-style-type: none"> ▪ More businesses, have come and plan to come to the village. It has also positively affected the tax base.
6) Do you prefer that the population of ____ grow significantly, stay about the same, or significantly decrease over the next several years?	<ul style="list-style-type: none"> ▪ Controlled growth
7) Generally speaking, do you think most residents of ____ wish to see the population of ____ grow, stay about the same, or decrease over the next several years?	<ul style="list-style-type: none"> ▪ more growth, more opportunities, more self sufficient

continued on next page

Response from Municipal Representatives

Question 8. Which of the following issues do you think that most [municipality] residents generally consider as important or problematic within [municipality] ?
[check all that apply]

9 responses were received from representatives of 9 municipalities, as follows:

	Allerton	Bondville	Broadlands	Champaign City	Fisher	Foosland	Gifford	Homer	Ivesdale	Longview	Ludlow	Mahomet	Ogden	Pesotum	Philo	Rantoul	Royal	Sadorus	St. Joseph	Savoy	Sidney	Thomasboro	Tolono	Urbana
Conservation of farmland																								
Residential development in outlying areas																								
Increasing traffic & road maintenance in unincorporated areas																								
Conservation of natural resources in unincorporated areas																								
Sufficient parks & recreation opportunities near home																								
Properly maintained onsite wastewater treatment & disposal systems																								
Adequate groundwater availability																								
Availability of renewable energy resources (e.g., wind power)																								
Maintenance of drainage systems																								
Non-farm traffic conflicts with farm traffic on rural township roads																								
Recreational trails																								
Water quality																								
Air quality																								
Continuing development on municipal fringes & piecemeal development																								
Convenient access to commercial agricultural support services																								
Isolated rural residential development																								
Conversion of farmland																								
Blighted or rundown neighborhoods																								

☒ 1 response

☐ no response



TOWNSHIP OFFICIAL - INTERVIEW

The purpose of this interview is to gather the opinions of a sample of local officials of townships within Champaign County. The following questions relate to quality of life, growth, and other issues of potential concern.

- 1) What do you think residents of [] Township **like most** about living in [] Township?
- 2) What do you think residents of [] Township **like least** about living in [] Township?
- 3) In your opinion, what **important issues or concerns** are [] Township officials **currently** facing?
- 4) What do you think will be important issues or concerns that future [] Township officials will face over the **next 15 or 20 years**?
- 5) Between 1990 and 2000, there was a shift¹ in the population of **unincorporated** portion of [] Township (from number¹ people to number² people). Do you think this overall population shift² has impacted residents of [] Township? How?
- 6) Do **you** prefer that the population of [] Township grow significantly, stay about the same, or significantly decrease over the next several years?
- 7) Generally speaking, do you think most **residents** of [] Township wish to see the population of [] Township grow, stay about the same, or decrease over the next several years?

- 8) Which of the following issues do you think **most** [] **Township residents** generally consider as important or problematic issues within [] Township unincorporated areas?

(check all that apply)...

- ☐ conservation of farmland
- ☐ residential development in outlying rural areas
- ☐ increasing traffic and road maintenance in unincorporated areas
- ☐ conservation of natural resources in unincorporated areas
- ☐ sufficient parks and recreation opportunities nearby home
- ☐ properly maintained onsite wastewater treatment and disposal systems
- ☐ adequate groundwater availability
- ☐ availability of renewable energy resources (e.g., wind power)
- ☐ maintenance of drainage systems
- ☐ non-farm traffic conflicts with farm traffic on rural township roads
- ☐ recreational trails
- ☐ water quality
- ☐ air quality
- ☐ continuing development on municipal fringes and piecemeal development
- ☐ convenient access to commercial agricultural support services
- ☐ isolated rural residential development
- ☐ conversion of farmland
- ☐ blighted or rundown neighborhoods

List others (use a separate sheet if necessary).....

Thank you for participating and responding to this interview. We hope you participate at the upcoming LRMP public workshop regarding land use and resource management issues in unincorporated areas of the County. That workshop will occur during the first part of April, 2008. We will notify [] Township officials regarding the time and place of the public workshop.



MUNICIPALITY OFFICIAL - INTERVIEW

The purpose of this interview is to gather the opinions of a sample of local officials of municipalities within Champaign County. The following questions relate to quality of life, growth, and other issues of potential concern.

- 1) What do you think residents of [] **like most** about living in []?
- 2) What do you think residents of [] **like least** about living in []?
- 3) In your opinion, what **important issues or concerns** are [] officials **currently** facing?
- 4) What do you think will be important issues or concerns that future [] officials will face over the **next 15 or 20 years**?
- 5) Between 1990 and 2000, there was a shift¹ in the population of [] (from [xxx] people to [xxx] people). Do you think this overall population [increase/decrease] has impacted residents of []? How?
- 6) Do **you** prefer that the population of [] grow significantly, stay about the same, or significantly decrease over the next several years?
- 7) Generally speaking, do you think most **residents** of [] wish to see the population of [] grow, stay about the same, or decrease over the next several years?

- 8) Which of the following issues do you think **most** [] **residents** generally consider as important or problematic issues within or nearby []?

(check all that apply)...

- ☐ conservation of farmland
- ☐ residential development in outlying rural areas
- ☐ increasing traffic and road maintenance in unincorporated areas
- ☐ conservation of natural resources in unincorporated areas
- ☐ sufficient parks and recreation opportunities nearby home
- ☐ properly maintained onsite wastewater treatment and disposal systems
- ☐ adequate groundwater availability
- ☐ availability of renewable energy resources (e.g., wind power)
- ☐ maintenance of drainage systems
- ☐ non-farm traffic conflicts with farm traffic on rural township roads
- ☐ recreational trails
- ☐ water quality
- ☐ air quality
- ☐ continuing development on municipal fringes and piecemeal development
- ☐ convenient access to commercial agricultural support services
- ☐ isolated rural residential development
- ☐ conversion of farmland
- ☐ blighted or rundown neighborhoods

List others (use a separate sheet if necessary).....

Thank you for participating and responding to this interview. We hope you participate at the upcoming LRMP public workshop regarding land use and resource management issues in unincorporated areas of the County. That workshop will occur during the first part of April, 2008. We will notify [] officials regarding the time and place of the public workshop.

INTERVIEWS: KEY REPRESENTATIVES OF MUNICIPALITIES WITH AN ADOPTED COMPREHENSIVE LAND USE PLAN

In 2008, LRMP staff began a series of interviews with selected representatives of the twelve municipalities in the County that have adopted a comprehensive land use plan.¹ Together, LRMP staff and knowledgeable persons representing or working on behalf of each municipality reviewed both the recent and expected near-term:

- development patterns on the fringes of the municipality; and
- areas within the municipal 1-1/2 mile extraterritorial jurisdiction that have recently become serviceable by public sewer or are expected to be provided with public sewer in the near term.

The purpose of each interview was to reach a mutually agreeable understanding of what could be considered as ‘rural’ and ‘urban’ within the 1-1/2 mile extraterritorial jurisdiction (ETJ) immediately outside the municipal corporate limits—the area of overlapping County and municipal planning jurisdiction.

The criteria for identifying ‘rural’ and ‘urban’ areas were detailed in Chapter 3 of the LRMP *Existing Conditions and Trends Report*.

Differentiating Rural and Urban Lands

Urban Lands. ‘Urban’ lands... will be identified as a distinct type of LRMP planning area. Within the County, the following land is defined as ‘urban’:

- 1) within municipal corporate limits;
- 2) served by a public sanitary sewer system;
- 3) unincorporated and designated as a future ‘urban’ land use on an adopted municipal comprehensive plan, adopted intergovernmental plan or special area plan, and located within the service area of a public sanitary sewer system; or
- 4) within the comprehensive planning area of the University of Illinois at Urbana-Champaign (e.g., University of Illinois at U-C South Campus Master Plan).
- 5) other land within the County surrounded by any ‘urban’ land described in items 1-4 above.

Rural Lands. ‘Rural’ lands ...will be identified as a distinct type of LRMP planning area. ‘Rural’ lands within the County are unincorporated lands that are not expected to be served by public sanitary sewer system, including lands located:

- within the 1-1/2 mile ETJ of a municipality with an adopted comprehensive land use plan and designated as a future land use area consistent with or similar to the general land use categories: ‘agriculture’; ‘parks and preserves’; or ‘open space’; or
- within the planning area of an adopted intergovernmental or a special area plan and designated for future land use development consistent with or similar to the general land use categories: ‘agriculture’; ‘parks and preserves’; or ‘open space’.

1. To date, 10 of the desired 12 LRMP staff interviews with key municipal representatives have taken place. LRMP staff interview meetings with municipal representatives of Tolono and Fisher are expected to occur in May 2008.

Interviews with key municipal representatives featured a detailed review of the ETJ area, with a focus on ETJ areas adjacent to municipal corporate limits.

Each meeting included questions regarding the municipality's public sanitary sewer system. Recent and expected near-term improvements to each municipality's public sanitary sewer system were carefully reviewed. Municipal representatives identified the natural or manmade barriers (e.g., streams, topography, or pipelines) that limited the potential expansion of their sewer system.

Each meeting included a review of the Future Land Use Map of each municipality's adopted municipal comprehensive land use plan. Because a municipal comprehensive land use plan, like any plan, requires monitoring and updating on a regular basis, the recent and current development patterns within ETJ areas were discussed. Based on the discussion, imminent and probable growth areas were identified. Municipal representatives provided their best estimate of development patterns within the ETJ areas expected during the next 5 to 10 years. The identified barriers, municipal comprehensive plans, and recent development trends provided the framework for approximating contiguous growth areas.

The LRMP goals and policies reviewed and formulated during Stage 2 will need to address the types of land use and resource management issues that are relevant and applicable to the 'urban' contiguous growth areas developed through these interviews.² The LRMP goals and policies should reinforce and support the needs and desires of urban areas to the extent that it is possible. Since overlapping jurisdictions are present, and it is undesirable to duplicate planning efforts, it is important for political entities to cooperatively discuss their development plans. The defined growth areas are not intended to confine or limit growth; rather, they provide benchmarks for coordinated, contiguous development.

Just as important, the LRMP goals and policies reviewed and formulated during Stage 2 will need to address the types of land use and resource management issues that are relevant and applicable to the 'rural' areas of the County.

-
2. The LRMP Future Land Use Map to be developed during Stage 3 will feature the contiguous growth areas developed through these interviews.

PUBLIC WORKSHOP

A public workshop was held in April 2008 in order to provide residents an opportunity to share their ideas about goals, land use policies, land use types, and preferable locations for these land uses in the County.

The public workshops were advertised by means of public notice signs alongside the road at rural intersection locations, newspaper notice, website, posted flyers, announcements at public meetings, and by word of mouth.

The workshops were held in early April, both having the same structure and content, in the gymnasium at the First Christian Church, 3601 S. Staley Road in Champaign. The same structured workshop occurred on a weekday evening (Tuesday, April 1, 2008, from 6:00 p.m. - 8:30 p.m.) and on a Saturday morning (Saturday, April 5, 2008, from 9:00 a.m. – 11:30 a.m.).

Workshop Format

At the workshop, staff provided a general overview of the LRMP development process and brief review of issues identified in Chapter 13 of the *LRMP Existing Conditions and Trends Report, Final Draft dated January 14, 2008*.

The first part of the workshop consisted of individuals completing a Policy Preference Questionnaire. The second portion of the workshop consisted of a series of group mapping exercises. These workshop components are described below.

Policy Preference Questionnaire

A Policy Preference Questionnaire was distributed to each workshop participant to complete. The questionnaire consisted of 15 multiple choice questions that focused on the more controversial policy preference issues, including:

- property rights and land use
- farmland conversion
- rural residential development
- development within 100-year floodplain
- rural drainage system maintenance
- siting and support of recreational trails
- alternative energy sources and facilities

Each workshop participant had the option of providing written additional comments for each of the 15 questions. During this part of the workshop, participants were free to discuss the questionnaire with other participants. The Policy Preference Questionnaires were collected from each workshop participant after approximately 30 minutes. This report contains a summary of the Policy Preference Questionnaire results.

Mapping Exercises

A significant portion of the Public Workshop consisted of map exercises completed by groups of six to eight participants. Each group of participants was asked to consider five distinct mapping exercises. Group consensus was not a requirement in each of the five mapping exercises.

Exit Questionnaire

A brief Exit Questionnaire was attached to the end of the Policy Preference Questionnaire. This 11-question form included an inquiry regarding how workshop participants became aware of the LRMP public workshop and requested standard demographic and background information.

PUBLIC WORKSHOP - POLICY PREFERENCE QUESTIONNAIRE RESULTS

*** Question 1

Workshop participants considered a range of policy positions regarding the issues of ‘individual property rights’ and the restrictions on development that are associated with ‘community property rights’. They were asked to select one of five responses that most reflected their viewpoint.

Of the 116 responses received, 112 responses were usable (2 respondents left Question 1 blank and 2 respondents selected more than one answer.) Based on the 112 usable responses, a majority of Question 1 respondents (58%) indicated they prefer County land use policies that protect agricultural lands, public and private natural areas, and the use of infrastructure, roadways and water supply --with the understanding that those policies could lead to additional land use regulations.

RESPONSE RATE	Question 1	
	INSTRUCTION TO RESPONDENTS: SELECT ONE RESPONSE THAT MOST REFLECTS YOUR VIEWPOINT	
10%	A)	I want County policies that allow landowners in unincorporated areas to develop land as they choose. This would maximize the right to use private property but would limit controls that the County now holds, such as: <ul style="list-style-type: none"> ▪ building density regulations that limit number of vehicles on rural roads due to higher rural residential population and farmland converted to other uses ▪ regulations regarding compatible land uses ▪ building size, height and location regulations
13.5%	B)	I want County policies that allow landowners in unincorporated areas to develop land as they choose; however, I want those landowners to pay for the costs of development, including: <ul style="list-style-type: none"> ▪ appropriate impact fees for roadway and infrastructure maintenance related to development of their land; ▪ groundwater impact assessment and meeting groundwater use standards; and ▪ adhering to onsite wastewater systems maintenance standards that are enforced on a regular basis.
5%	C)	I want County policies that allow for an increased number of residential lots to be constructed in rural areas and that encourage ‘clustering’ such developments so that natural resources, agricultural lands and public infrastructure are optimally utilized. I realize that these County policies would lead to more restrictions on what landowners can do with their land.
13.5%	D)	I think current County policy sufficiently balances individual property rights and community property rights.
58%	E)	I want County policies that support more control over ensuring the protection of our agricultural lands, public and private natural areas, and the use of infrastructure, roadways, and water supply. I realize that these County policies would lead to more restrictions on what landowners can do with their land.

Question 1: Additional Comments Submitted

Response A Additional Comment:

- This should apply to private land owners, not developers who have no interest in the property after they build.

Response B Additional Comments:

- I don't agree with completely abandoning zoning in rural areas-- ie, trailer parks, businesses, industrial, apartments."
- But see circled part of #B.. (respondent circled the last three bullet points in B)

Response D Additional Comments:

- Do not lessen individual property rights. Enough laws and regulations exist.
- Chose (D) but struck out the words 'sufficiently balances' and wrote in 'Already Oversteps'

Response E Additional Comments:

- Coherent development regulations are essential to quality of life for all county residents.
- Our present policies are unsustainable- we can't "grow on" this way.
- Possibly should depend on size of and area. As owner of 6 acres, I want to do as I please. I won't be subdividing, but [want] to build what I want.
- This sentence ("I realize that these County policies.....") is not needed, especially after options A, B, C. If this is appropriate, qualifiers in the other direction should be added to A and B.
- I would like to see the three bullets under B added to any development that occurs in the county.
- respondent inserted the word "sprawl" in between "roadway" and "water supply" in choice E
- I feel it is important for the county to have control over land use because it is able to look at the long term expected value of farm and natural land, while economic pressures on landowners tend to be short sighted.
- I think that there needs to be protection for our County lands from development and given our rich agricultural resources. However, if there is development the developer needs to pay for necessary infrastructure.
- But see circled part of #B" (respondent circled the last three bullet points in B)
- I do not want the County Board to play favorite and politics in making exclusions! Enough of that."
- Where development occurs, please consider cluster zoning!

*** Question 2

Workshop participants considered land uses other than agriculture accommodated in rural areas, and various conditions associated with allowing those land uses in rural areas. They were asked to indicate which of the four scenarios they agreed regarding land use in rural areas. Respondents could select as many of the options that they agreed with.

As indicated below, Options B and C were two responses that 38% of the participants agreed with. Options A and D were selected by 25% and 26% of the respondents respectively.

RESPONSE RATE	Question 2	
	INSTRUCTION TO RESPONDENTS: SELECT EACH RESPONSE YOU AGREE WITH	
	Land Uses other than agriculture....	
26%	A)	should not be accommodated in rural areas, including in privately owned wooded areas and pasturelands situated alongside streams and drainageways in the County.
38%	B)	should not be accommodated in rural areas except in areas of less productive soils
38%	C)	should be accommodated in rural areas only if the disturbance of public or privately owned natural areas is minimized.
25%	D)	should be accommodated in rural areas, including in privately owned wooded areas and pasturelands situated alongside streams and drainageways in the County.

Question 2: Additional Comments Submitted

Response A Additional Comments:

- This isn't to mean wooded areas should be converted to Ag.
- Not beyond by-right limits.
- Agriculture lands cannot be replaced - we must be very careful with our land resources. We will have to feed 7.2 billion people in the world in the next 20 years.

Response B Additional Comments:

- Development/re-development within current towns and villages needs to occur first...
- Our agricultural land is extremely valuable and should be protected. However, natural land is also extremely valuable in terms of promoting community well being as well as maintaining the long term ecological health of the county. A natural balance should be possible by utilizing less farmland as habitat space.
- We have some of the most productive soils in the world here and we have already lost a lot of it. There is actually relatively little land in Champaign County that is not in the jurisdiction of a city or a municipality. We need to keep the land outside these municipalities preserved for agricultural use or conservation areas.
- Respondent circled "including in privately owned wooded areas and pasturelands situated alongside streams and drainageways in the County" in choice (A) and drew an arrow to choice B with a "+" sign.

Response C Additional Comments:

- Drainageways are sometimes inadequate, so care must be taken to stay far enough away to prevent flooding.
- Some activities beyond agriculture lend themselves to a rural setting, but the impacts of said activities should be monitored/regulated.
- Unclear question.

Response D Additional Comments:

- The diversity of the land as it lies limits many choices too one, that has to be individual to the property in question. In other words, blanket restrictions are not fair.
- Accommodated means allowed.
- By other than agriculture, I am thinking recreation, not residential development.
- Limitations on development on residential home ownership in wooded/pasture/'natural' areas is NOT the way to protect or enhance these areas, especially when ag uses are relatively immune from these limitations. Note my comments in the public hearings last year on previous development and natural areas proposed regulations. Residential ownership in many (most?) cases has been extremely beneficial to these areas, and the county or state is unable to do this.

Question 2 General Comments

- Development near ag and natural lands leads to conflicting demands on resources - complaints to the farmers about noise and odor.
- Many of these areas can be restored to create areas of attractive vegetation and more efficient land and water management.
- Agriculture should not be given a blank check... ag uses should also respect preservation/conservation of natural areas.
- Too General. Need specifics. If I own 6 woodland acres and want to build a house, I should be able to as I please. Mowing down trees to build a factory should no be.
- All choices are faulty - environmental conditions should be mapped and evaluated to create a long-term plan/process that restores integrity to needed natural areas.
- Normal human activity, such as building a home, making and maintaining paths and play or picnic areas and planting gardens should be allowed on property that is privately owned.
- I am concerned with water usage in the area. Water is a depleteable resource and I question whether Cham. Co. has a water policy in place to protect us against the uncontrolled city growth.

*** Question 3

Workshop participants indicated which of six scenarios they agreed regarding potential policy options pertaining to habitat fragmentation. Respondents could select as many of the scenarios that they agreed with. A majority of respondents (66%) agreed with Option B. Coming in a close second were Options A and C, with 55% and 54% of respondents selecting those as preferred land use options.

RESPONSE RATE	Question 3	
	INSTRUCTION TO RESPONDENTS: SELECT EACH RESPONSE YOU AGREE WITH	
	County policies should support....	
55%	A)	protection of large, continuous areas of woodlands, pastures, or grasslands.
66%	B)	public outreach and education regarding the benefits of large, continuous areas of woodlands, pastures or grasslands and best management practices of maintaining these areas.
54%	C)	acquisition of conservation easements through donation, purchase, or other privately funded means.
24%	D)	establishment of ecological infrastructure that provides services such as pest control, insect pollination, soil retention, flood control, soil formation and others.
34%	E)	establishment of a minimum distance separation (a 'buffer') between established public parklands and public or private preserves and newly proposed adjacent land uses.
27%	F)	landowners' right to use their land as they see fit.

Question 3: Additional Comments Submitted

Response B Additional Comments:

- I'd agree that there needs to be public outreach and education on 'B', but we also need to educate the public on why people involved in agriculture are so supportive on
- Respondent wrote "education not legislation" under choice B.

Response C Additional Comments:

- Respondent struck out the word "purchase" in choice C and wrote "Do Not!! Buy"
- Respondent struck out the word "easements" in choice C and wrote the word "land."

Response D Additional Comments:

- I don't know what D means.

Response E Additional Comments:

- At least a buffer zone if not better planning!

Response F Additional Comments:

- Respondent drew an arrow to choice F and wrote: "Sort of agree, especially for natural areas, as the landowner usually has the right idea, especially when contrasted with ag use (often exempt from regulation) and the inability of the county to do anything proactive.
- I would agree with F, but only as long as it fits with and is guided by current Champaign County zoning regulations.

Question 3 General Comments

- Habitat can be concentrated along streams, ditches. And existing woodlands to minimize the impact on agriculture.

Question 3: Additional Comments Submitted (continued)

- Land owners should have the freedom to use their land as they see fit - within the laws and regulations already on the books.
- Governmental planning and regulation is essential for preserving our environment, which is a "public good" that cannot be entrusted to individual landowners!
- Respondent circled the word "right" in choice F and wrote "Not a right, a privilege"
- Get grants to help find projects- 'green' is 'in' and we must lead the charge!
- A-E read between the lines. More than meets the eye.
- I don't like any of these choices! People need food, fibre, and fuel to live productive lives. Recognition that the high organic soils in the County can provide these should be a high priority.
- I want landowners to waive rights to do as they please, but with some restrictions. The restrictions would be something that protects the environment and is best for the surrounding area.
- If we could encourage these kind of areas it would benefit native plants and wildlife, as well as our communities and agriculture.
- Co. policies should enable landowners to do what they want as long as it doesn't cause someone else's lifestyle to deteriorate.

***** Question 4**

Participants were presented with three statements regarding development of farmland and selected each that they agreed with. Participants were invited to indicate other preferred farmland conversion land use policy options.

The majority of respondents selected Option A (66%) and Option B (60%) as most preferred farmland conversion land use policy options.

RESPONSE RATE	Question 4	
	INSTRUCTION TO RESPONDENTS: SELECT EACH RESPONSE YOU AGREE WITH	
	County policies should....	
62%	A)	limit development of farmland by adopting a voluntary Agricultural Preservation Areas program.
60%	B)	minimize impacts to farmland by encouraging separation areas (buffers) between newly created non-farm land uses and existing farmland.
27%	C)	allow development of farmland and its conversion to non-farm land use, if desired, by the landowner.
5%	D)	none of the above
22%	E)	other - please describe

Question 4: Additional Comments Submitted

Response A Additional Comments:

- I would say severely limiting conversion of class A farmland.
- is minimal - we need more opportunities for discussion and additional dialogue across interests- to educate each other about our goals and the consequences of absence of understanding the issues.

Response C Additional Comment:

- The land use policy must support an evolving economic base and impacts. Many references to loss of farmland, but that must be placed in the context of economic impact. While ag/farmland is down a few percent since 1970, my guess would be that the economic income to the county from the remaining farmland is way up. There is economic growth resulting from new industries that may not be considered from a focus on one industry (ag).

Question 4: Additional Comments Submitted (continued)

Response E Additional Comments:

- Continue with the 1 home per 40 acre guideline with a maximum lot size of 2 acres.
- Give property tax breaks to landowners who choose to leave acreage undeveloped.
- Reuse areas that have already been developed - do not expand into agricultural land.
- Make use of existing infrastructure instead of building in new rural areas. Redevelop current less desirable parts of the county.
- Limit development of farmland.
- Encourage infill redevelopment of land that has already been removed from agricultural use, and prohibit new development in rural areas.
- AP2, TDR, Conservation Easements.
- Allow development of farmland and its conversion to non farm land use, if desired, by the landowner with restrictions that appropriately regulate use.
- Agree with 'C' above only with limitations.
- No more rural subdivisions! and Educate the public why (How Ag is important both financially and conservation wise.
- (C) would be my choice but again, only if it is guided by current zoning regulations. In other words, there should not be a carte blanche attitude toward
- Develop regulations that guide development to areas that are contiguous to existing communities and infrastructure.
- The county needs to realize that we can never take back the farmland out of development. The county needs to be on board with the agriculture.
- Allow development that is compact and contiguous, or discourage development in areas of high quality farmland. Utilize Natural Resource Inventories to
- 'Incentives' developers who create/preserve wild areas/habitat.
- We need to protect our food supply and not be dependent on import alone. Moderation!
- Let free market decide 'best use' of land.
- Differentiate between prime farmland and CR land.
- Severely restrict development of agricultural land.
- 1 non-farm lot per 40 acres with lot size limited to 2 acres.
- Education so Champaign Cty. population thoroughly understands that this farmland globally, along with Argentina and Ukraine, is most valuable in the world.
- The areas where we have prime farmland in our county are among the best in the world and development produces irreversible damage. A stronger policy than (A) seems necessary.
- Create a policy of farmland preservation in areas where the County has jurisdiction.
- Tax at a high rate the parties involved in conversion of farm land to commercial/residential use.

***** Question 5**

Workshop participants were asked to indicate their land use policy preference with regard to land uses allowable in rural areas. They were asked to select one of four responses that most reflected their viewpoint. Of the total 116 questionnaires received, 115 Question 5 responses were useable (one respondent left the Question 5 blank).

Most respondents (57%) selected Option B, which represents a land use and resource management policy that is more restrictive than currently practiced in the County.

27% of respondents selected Option A, which most closely represents the current County land use policies allow for a limited range of land uses other than agriculture to occur on all soils. These land uses are generally those with: lower impacts to surrounding agricultural operations; limited impacts to available natural resources; and traffic levels not exceeding capacity of rural infrastructure. Certain higher standards are required to be met if these land uses are proposed to be located on best prime farmland.

RESPONSE RATE	Question 5	
	INSTRUCTION TO RESPONDENTS: SELECT ONE STATEMENT YOU MOST AGREE WITH	
27%	A)	A limited range of land uses should be allowed on all soils, including best prime farmland, provided that higher development standards are met on best prime farmland.
57%	B)	A limited range of land uses should not be allowed on best prime farmland soils, but should be allowed on other less productive soils.
10%	C)	A wider range of land uses should be accommodated on all soil types in the County.
6%	D)	All land uses should be allowed on all soil types in the County.

*** Question 6

Workshop participants were asked to indicate their land use policy preference with regard to restricting land uses based on soil type. They were asked to select one of three responses that most reflected their viewpoint. A total of 103 useable responses were provided (13 participants did not mark one of the three responses as preferred—several of those 13 participants instead provided comments about Question 6.)

A majority of respondents (58%) selected Option B, representing the preference to keep existing standards for development on soils currently identified as best prime farmland soils. Under current County policies, rural residential subdivisions on “best” prime farmland soils must meet higher, more stringent, development standards.

RESPONSE RATE	Question 6	
	INSTRUCTION TO RESPONDENTS: SELECT ONE STATEMENT YOU MOST AGREE WITH	
	County policies should....	
20.5%	A)	not use soil type as the basis for different development standards.
58%	B)	maintain existing standards for development on soils currently identified as “best” prime farmland soils.
21.5%	C)	maintain existing standards for development on the best prime farmland soils, but the definition of best prime farmland soils should be re-evaluated to be more exclusive (i.e., to include fewer soils).

Question 6: Additional Comments Submitted

Response A Additional Comments:

- You punish a land owner because he has better soil. His soil, his land, his rights.
- Economics will let us know!
- Economic standards and Population control.

Response B Additional Comments:

- You should include best prime and prime farmland in this.
- Best prime farmland should not be developed unless there is an urgent public need.
- The standards should be re-evaluated to include fewer uses e.g. lower the by-right number.
- Although this should still follow some kind of clustering in order to minimize trip generation and 'edge' impacts.
- I think LE scores by the county are great as is the designation of best prime farmland.

Question 6: Additional Comments Submitted (continued)

- Uncertain about existing standards.
- No more subdivisions on land w/ an LE of 85 or above.
- We should preserve best prime farm land but other areas as well.

Response C Additional Comments:

- We have to stop building sometime - tear down older/rundown and interbuild!!
- We need to keep in mind that we need to preserve our 'prime' farmland, but we need to do our best to preserve ALL farmland. If we NEED to develop, restrict to low

Question 6 General Comments:

- I cannot support any further farmland conversion in the county - we've lost too much already!
- In practice there are no stringent development standards. There need to be tougher requirements enforced.
- One shoe does not fit all - try common sense!
- E) none of the above.
- Residential development ought not be allowed on prime farmland.
- I do not like any of these options. 'Best' prime farmland should be preserved for agriculture and development restricted to contiguous areas of the existing cities.
- Cannot answer - insufficient info provided as to what 'existing standards' are.
- County policies should discourage (prohibit) hop-scotch sprawl - today's participants wanted reuse of abandoned commercial structures, e.g. Walmart. The County must acknowledge the uniqueness of the somewhat scattered best soils in the world - and protect them all for food (not ethanol) production. Our manmade County boundaries must not blind us to our unduplicated role as food producer. Additional crops should be encouraged for questionable agriculture.

***** Question 7**

Question 7 offered three policy options regarding farmland conversion for residential development in rural areas. Workshop participants were asked to select one of three responses that most reflected their viewpoint. A total of 113 useable responses were provided to Question 7.

The majority of workshop participants (60%) selected Option C, a farmland conversion policy that calls for less farmland conversion for residential development in rural areas. 82% of Option C respondents selected a most preferred response from the three sub-options. Of these responses, 44% most preferred the sub-option to allow no residential development (other than farm-related) in a designated agriculture district. The second most preferred sub-option was the option to generally allow only one new dwelling per 40 acres owned (selected by 32% of Option C respondents) and the sub-option to generally allow only 2 new dwellings per 40 acres owned was selected as the most preferred sub-option by 25% of Option C respondents. A total of 26% of workshop participants selected Option B, with 86% of those respondents identifying the preferred sub-option calling for landowners/ developers absorbing added costs of infrastructure improvements.

continued

RESPONSE RATE	Question 7	
	INSTRUCTION TO RESPONDENTS: SELECT ONE STATEMENT YOU MOST AGREE WITH	
	County policies should support....	
14%	A)	farmland conversion allowed under the current County regulations. (The current County regulations generally allow up to 3 or 4 residential lots and an unlimited number of 35-acre residential lots, plus rural residential subdivisions if rezoning is approved.)
26%	B)	more farmland conversion to non-farm uses such as residences, businesses or recreation uses, provided that ...
		INSTRUCTION TO RESPONDENTS: IF YOU SELECTED B, CHECK EACH CONDITION YOU AGREE WITH
		52% farmland is converted only adjacent to urbanized areas
		86% landowners/ developers absorb added costs of infrastructure improvements
		38% adequate public facilities and services are available (financed by public tax money)
		59% conflicts with agriculture are minimized
		45% compact clustered development methods are used
		14% none of the above
		3% other – please describe
60%	C)	more restrictive regulations so that less farmland can be converted.
		INSTRUCTION TO RESPONDENTS: IF YOU SELECTED C, CHECK YOUR MOST PREFERRED OPTION
		32% generally allow only 1 new dwelling per 40 acres owned
		25% generally allow only 2 new dwellings per 40 acres owned
		44% allow no residential development (other than farm-related) in designated agriculture districts
		14% other - please describe

Question 7: Additional Comments Submitted

Response 7B Comments:

- Compact clustered development is encouraged/supported and encourage conversion adjacent or close to existing urbanized area (allows leapfrogging.)
- And these developments tie into existing trail systems, provide parks for their residents if not dedicated public parks and incorporate conservation subdivision design principles, especially storm water management and maintain stream corridors or other accepted wildlife corridors.
- Conversion of woodland to residential development will be strongly discouraged.
- Consideration of air and water pollution must be handled better than this is done now!
- Vacant home sites, due to the size of the farming operations, should be utilized 2-3 acre sites.
- Respondent underlined 7b3 and wrote: "What does this include?"

Question 7: Additional Comments Submitted (continued)

Response 7C Comments:

- If a land owner wishes to sell land for an individual home, not a subdivision, he should be entitled to do so.
- Contiguous and compact development, no leap-frogging.
- 10 To 40 Acres
- 1 non-farm lot per 40 acres with lot size limited to 2 acres.
- Encourage use of farm land for wind farms as a source of energy and economic development.
- Even more restrictive.
- Allow no new development but allow improvements to existing dwellings in agricultural districts. Or allow a new dwelling to be built for people who own a certain number of acres which they intend to cultivate to be used as a primary residence on/by the cultivated land.
- No subdivisions approved.
- Believe restrictions (if enforced) under B above would provide restriction.
- This allows for the farmstead
- Respondent wrote next to C3 "Do other counties have this restriction?"

Question 7 General Comments:

- There is ample 'infill' that could be redeveloped in the cities without sprawling out into the county.
- Don't like questions.
- Our farmland is our most valuable asset - 'highest and best use' is a short-term view.
- Sprawl of subdivisions into agricultural lands must be halted!
- Respondent struck out the word "more" in B and wrote "limited."
- This is difficult to decide because all options have unintended subtle side effects. In general, I guess (A) might be my choice.
- If a person owns farm ground they are able to put up a dwelling if so desired. If it is a family member, then they put up 1 more dwelling on that 40 acres. Family members
- 1 per 40 has been tried in northern Illinois and failed. Now there are 40-acre estates.
- Creation of smaller farms that produce fruits, vegetables, poultry etc. should be promoted. The intense new agriculture is not a best use practice as an end to itself.
- While I don't believe 1/40 will stop development, I think it will control development. This is being done in counties across Illinois and should be implemented.

***** Question 8**

Question 8 more specifically examined policy preference with regard to limits placed on residential development in rural areas.

Participants were asked to select their one most preferred option from five versions of a County land use policy preference with regard to the limits placed on 'as-of-right' residential allowance. A total of 111 useable Question 8 responses were received.

The majority of Question 8 respondents (64%) selected Option A, indicating their preference that County policies should support a lower limit on the number of new residential lots allowed 'as of right' in rural areas. Examples of possible lower limits are: 1 new residential lot per 40 acres; or 2 new residential lots per 40 acres). 16% of Question 8 respondents preferred Option B, which represented the limits imposed under the current County zoning regulations.

continued

RESPONSE RATE	Question 8	
	INSTRUCTION TO RESPONDENTS: SELECT ONE STATEMENT YOU MOST AGREE WITH	
	County policies should support...	
64%	A)	a lower limit on the number of new residential lots allowed 'as of right'. Examples of possible lower limits are: 1 new residential lot per 40 acres; or 2 new residential lots per 40 acres).
16%	B)	the current 'as of right' residential allowance of up to 3 or 4 new residential lots, plus an unlimited number of 35-acre residential lots.
9%	C)	an increased number of new residential lots allowed 'as-of-right', along with added measures, such as imposing developer or landowner impact fees to pay for road improvements or necessary public services, and regulations to monitor performance of onsite wastewater systems.
4%	D)	an increased number of new residential lots allowed 'as-of-right' without the additional measures as described in choice C, above.
7%	E)	no limits on the number of new residential lots allowed 'as-of-right'.

Question 8: Additional Comments Submitted

Response A Additional Comments:

- Extended families don't occupy farms quite like they need to. So this is a kind of back-door subdivision.
- Very difficult issue. Be sure unintended consequences don't make the situation worse.
- So-called 'individual property rights' must not be allowed to trump the public good.
- Question is not clear on the definition of 1/40. Is it a large min. lot size of 40 acres, or a small lot of 2-3 acres for every 40 acres owned.
- This is a tough question - What are those homeowners doing with the remaining 39 acres? If it is agricultural in nature or left undeveloped, possibly woodland or animal husbandry, that's fine, but we don't need more people mowing 5+ acre lawns.
- Choice A reduces the breakup of contiguous farmland.
- Perhaps this could be different depending on the distance to a city/village so more housing developments would be allowed closer to a city but fewer allowed in the country to protect farmland.
- I also think that any development under A should also have impact fees assessed.
- Though this type of policy encourages sprawl.
- Only replacement of existing would be my preference, unless need could be strongly documented.
- Respondent circled "along with added measures...." in choice C and wrote + and drew an arrow to choice A.

Response B Additional Comments:

- Respondent wrote "next most logical" next to choice (D). "B balances the issue, reasonable development rights while limiting large scale development.
- If the farm land is broken up into smaller farms, I think this is fine but it should primarily be used for farm land.

Response D Additional Comments:

- Establish minimum rural 'lot' size, ie 3,5,10 acres.

Question 8 General Comments:

- Answer C is most agreeable, however 'added measures' is too open ended for me to agree with this statement.
- B might be the best choice here.
- We all ready have many homes for sale. Encourage use of existing. Yes, builders like to build but why wait for sprawl. Plan ahead, support existing - including all commercial must re-rent/sell/etc and not leave building to deteriorate!

*** Question 9

Currently in Champaign County, once a landowner has created all allowed 'as of right' lots, then in order to create any additional residential lots, that landowner needs to obtain approval of a rezoning request. Creating such additional residential lots in outlying rural areas is generally referred to as 'rural residential subdivision development'. This is the focus of Question 9, which provided an array of five related policy options from which workshop participants were asked to select the one option with which they most agreed.

The most restrictive policy option presented for consideration, Option E, was selected as most preferred by 35% of workshop participants. The second most restrictive policy option presented for consideration, Option D, was selected as most preferred by 29% of workshop participants. A total of 21% of workshop participants selected Option B as their most preferred option, indicating their preference that current County land use regulations be continued.

RESPONSE RATE	Question 9	
	INSTRUCTION TO RESPONDENTS: SELECT ONE STATEMENT YOU MOST AGREE WITH	
	County policies should...	
7%	A)	support the creation of any number of residential lots on land in the County.
21%	B)	support the continued practice of considering rezoning requests for rural residential subdivisions on all soils, including on best prime farmland.
8%	C)	prohibit development of rural residential subdivisions only on best prime farmland used as agricultural cropland, but continuing to consider rezoning requests for rural residential subdivisions on best prime farmland in wooded areas or on less productive soils.
29%	D)	prohibit development of rural residential subdivisions on all best prime farmland, but continuing to consider rezoning requests for rural residential subdivisions on less productive soils.
35%	E)	prohibit all further rural residential subdivisions in the County.

Question 9: Additional Comments Submitted

Response A Additional Comment:

- Respondent wrote "as long as it meets current regulations" next to choice A.

Response B Additional Comments:

- When proposed development is on best prime farmland, a stricter set of 'rules' should apply in order for development to proceed.
- Again, ag use (e.g. 'best prime farmland') should not be built into regulation as a sole criterion. The economic (and other factors) of a given request should be able to be considered, and the current practice probably allows for that.

Response C Additional Comment:

- Respondent wrote next to choice C: "With greater due diligence than is now used."

Response D Additional Comments:

- Subd. Development should be controlled, restricted, and regulated. Subd should not be allowed on prime farmlands, in forests and woodlands, or on the banks of rivers and streams.
- The wooded areas and (though rare) highly erodible prone areas should be only ones considered, until development-re-development with current city village boundaries have been exhausted.

Question 9: Additional Comments Submitted (continued)

Response E Additional Comments:

- Respondent wrote next to choice E: "unless adjacent to already developed urban areas."
- OK, this choice makes me an 'extremist crackpot' - But consider: - There's plenty of land already out of county control in the E.T.J. areas. The cities will keep growing and pushing out their ETJ boundaries. We've got to save what we can in the face of this!!
- Do we really need more homes? County population is not growing rapidly. Interbuild - upgrade existing areas and quit extending the city limits that affect farmland. We may need all land for food soon for fuel, food and fiber production no matter the soil type.
- Again- ZBA, DPZ and County Board have demonstrated that they will tolerate almost every residential development and lack the means and will to keep development out of sensitive habitat, very wet areas, etc., etc.
- Rural residential subdivisions are the most expensive kinds of development, in terms of the energy required to get the residents to and from their homes and activities. It also increases costs to schools, health care, fire protection, etc.
- Residential areas in town have not yet been exhausted and should be utilized before considering allowing more expansion.
- There are already more than enough places to live.
- Respondent drew an arrow from choice E and wrote "except in areas w/no crop production and no woods.
- Choosing 'E' is my personal preference, but probably not realistic. But I would like to see additional zoning limitations considered - additional to the 'prime farmland.' These considerations would be along the lines of those mentioned in question 3."
- I know (E) won't happen - but we need to recognize that our strength/force comes from our gift of the world's best soil and the Mahomet aquifer - not from industrial and commercial population growth!

Question 9 General Comment:

- F - none of the above

***** Question 10**

Question 10 presented four general options regarding land use and resource management policies related to new development within the 100-year floodplain. Workshop participants were asked to indicate and select any of the four policy options presented with which that they agreed.

The majority of respondents (70%) indicated their agreement that County policies should support greater limits on new development within the 100-year floodplain. A total of 65% of workshop participants selected the second most selected option (Option A), calling for County policies that support watershed planning at a regional level.

RESPONSE RATE	Question 10	
	INSTRUCTION TO RESPONDENTS: SELECT EACH RESPONSE YOU AGREE WITH	
	County policies should support....	
65%	A)	watershed planning at a regional level.
70%	B)	greater limits on development within environmentally sensitive 100-year floodplain areas.
6%	C)	fewer limits on development within environmentally sensitive 100-year floodplain areas.
3%	D)	no restrictions on floodplain development.
5%	E)	other – please describe

Question 10: Additional Comments Submitted

Response A Additional Comments:

- Respondent wrote next to A: "and local level to include drainage districts, land owners, and municipalities - creative collaboration can be achieved."
- Respondent #81 wrote "multi-county" next to choice A.

Response E Comments:

- Accurate flood plain maps for all municipalities and county - every one using same maps.
- Current homes in flood prone areas should be zoned as not replaceable.
- We don't need more development and these areas are already stressed w/ channeling without creating areas where there are increase impermeability around waterways and increased channeling.
- No opinion or not sure. Agree with the blue 2nd paragraph above, but not sure that can't be accommodated within current policy/practice. A-D seem not inclusive of all options.
- Current floodplain maps should be used! Engineering specs should be considered as well.

Question 10 General Comments:

- 100-year events are becoming more frequent - should 500-year standard be inserted?
- Work with drainage districts to consider ramifications of move water out of farmland as fast as possible.
- Can we please clean up existing rural home/farm/business site? All of the scrap iron collected by county residents needs to be cleaned up to protect the enviro.
- Development in floodplain areas usually results in increased economic costs (mitigation and restoration costs) to the community as well as ecological costs.

*** Question 11

The focus of Question 11 was to identify the most preferred County land use policies that address the issue of increasing levels of traffic on township roads.

Workshop participants were asked to select their most preferred policy from four options provided for their consideration. A total of 109 useable Question 11 responses were received. Moderate support of Option C was indicated, as this option was selected as most preferred by 33% of Question 11 respondents. Option C called for implementation of a proportionate impact fee. Also receiving a moderate level of support was Option A, with 28% of Question 11 respondents selecting Option A as their most preferred option. Option A called for allowing no additional new dwellings access to township roads that are at or above maximum traffic capacity. And, 24% of Question 11 respondents selected Option B as most preferred policy option, to allow only one additional access per new 'as of right' dwelling along township roads at or above maximum traffic capacity.

RESPONSE RATE	Question 11	
	INSTRUCTION TO RESPONDENTS: SELECT ONE STATEMENT YOU MOST AGREE WITH	
	Along township roads that are at or above maximum traffic capacity...	
28%	A)	no additional new single family dwellings should access the township road.
24%	B)	allow only one additional access per new single family 'as-of-right' dwelling to the township road.
33%	C)	allow any number of new single family dwellings access to the township road if prior to construction the developer / owner / resident pays a proportionate impact fee for township road improvements.
15%	D)	allow any number of new single family dwellings access to the township road without any restrictions or impact fees.

Question 11: Additional Comments Submitted

Response A Additional Comments:

- We have many township roads that cannot support modern traffic needs.
- A is probably not realistic in light of by-right allowances, but I like the theory.
- How about encouraging real estate brokers to market homes on the basis of bicycle, pedestrian and public transportation smaller MTD vehicles when appropriate, not automobile transportation for solo drivers only.

Response B Additional Comments:

- Place 'No Passing Zone' markers and/or signage near dwelling access points. This is especially important where there are hidden entrances or multiple entrances for a number of homes and businesses. People will continue to exceed the posted speed limit, but they need to be made aware of the danger of passing other vehicles when hidden or multiple entrances lie ahead.
- Respondent wrote next to choice B: "Only if the 'as-of-right' factor changes to 1 per 40 acres."

Response C Additional Comments:

- The implicit subsidy of using county tax dollars to extend infrastructure to new development is unfair to those of us who will never use this infrastructure! Development would slow considerably if all the costs were borne by the developers. Examples, Not in County - New water plant: Everyone will pay 60% more, but I live in East Urbana and am served by 2 plants now. Why should 48% of my increase (every 2 months forever) go to pay for a plant that doesn't benefit me? Another example: Champaign New SW Fire Station - 1/4cent sales tax borne by all consumers, but benefit is only to a small group.
- Respondent struck out the word "any" in choice C and wrote in "limited" and "within the additional restrictions regarding clustering, etc."
- The impact fee should be substantial and enforced.
- As long as the development is approved in terms of not taking the areas of productive farmland or threatening natural areas, the developer/owner/resident should be able to pay for improvements to the roads that they will require.

Response D Additional Comments:

- The major culprit here is the way townships are funded, or the discrepancy between wealthy and poorly funded townships - This needs addressed by the county.
- Don't predefine living areas by some trumped up 'access' limitations on fees. Presumably, road level and maintenance is balanced with number of residents and the tax levels they pay. As residents increase, so do the taxes available for infrastructure maintenance.

Question 11 General Comments

- This is difficult to decide because the increased tax revenue generated by increased population/houses, that is, the increase in the tax base, may offset the increase in the cost of maintenance; but I don't have any solid information about this. It should be considered or investigated.
- What is 'additional access per single family' none of this makes sense.

***** Question 12**

The focus of Question 12 was maintenance of rural drainage systems. Workshop participants were asked to select each of the four policy options presented with which they agreed.

Option A received the most agreement, with 65% of workshop participants indicating their agreement. Options B and C received 47% and 49% agreement rates, respectively. 40% of workshop participants indicated their agreement with Option D, calling for drainageway maintenance practices which could include, though generally infrequently, high impact measures.

RESPONSE RATE	Question 12:	
	INSTRUCTION TO RESPONDENTS: SELECT EACH RESPONSE YOU AGREE WITH	
	County policies should encourage...	
65%	A)	rural drainage system maintenance methods that prevent erosion, sedimentation and negative environmental impacts.
47%	B)	minimizing the potential negative impacts on aquatic habitat, biodiversity (environmental health) and downstream flooding.
49%	C)	drainageway maintenance methods that allow for continued natural biodiversity of a stream and that are cost effective at the same time.
40%	D)	drainageway maintenance practices which may include, though generally on an infrequent basis, high impact measures (e.g., dredging or clearcutting).

Question 12: Additional Comments Submitted

Response A Additional Comment:

- Farmers should practice and prevent erosion with use of filter ships - stop plowing the caps off the ridge next to road/ditches.

Response B Additional Comment:

Respondent wrote "within reason, limits, cost effective" next to choice B

Respondent circled the word "minimizing" in choice B and wrote: "minimize' that fatal toothless word that enables every party at anytime to define the threshold that will permit them to play with drainage as they choose.

Response D Additional Comments:

- Drainage maintenance is the responsibility of the land owner. The drainage district decides the best practice necessary for proper function. Local government doesn't need to be involved.
- Respondent underlined "high impact measures" in D and wrote: "I feel this is a misleading term. Dredging is not high impact measures."
- Drainage ditches need to function as drainage ditches, not become more.
- Respondent drew an arrow from choice D and wrote: "If you do the rest, won't that pretty much eliminate the need for this?"

Question 12 General Comments

- A huge existing problem.
- State drainage law is reminiscent of the mining law of 1872 - Today drainage districts have way too much power to act however they choose.
- Just as important as drainage removal (water removal) is the preservation of water resources, especially our aquifers! Facilities that represent a waste of this resource (for example ethanol plants) should be prohibited.
- Only dredge when absolutely necessary for long-term improvement.
- Few issues are more aggravating to me than the ability of drainage districts to do whatever they please irregardless of environmental damage and increased flooding downstream. Original laws weren't meant for today's high intensity row cropping, with its associated use of fertilizers and pesticides and high soil erosion practices.
- Drainageway maintenance is a must! It would be nice to use proven erosion control measures that prevent negative environmental impacts (stonetoe protection, etc.)
- Let the drainage districts handle this.
- We must continue to allow drainage districts to do maintenance projects. I am disappointed with the word 'clearcutting' though being listed as to what these districts do when maintaining the ditches. Absolute 'clearcutting' practices are rarely used.

Question 12: Additional Comments Submitted (continued)

- This is important but the County should also support farming practices that are lower impact on drainage problems (organic, smaller scale, etc.) to minimize problems from the outset.
- Balance the ag and ecological impacts and benefits. Balance-Balance-Balance. Current policy and practice doesn't always allow this!

***** Question 13**

There is demand for additional recreational trails to be developed in the unincorporated parts of the County. Question 13 focused on policy preferences regarding what destinations or amenities the recreational trails should connect. Workshop participants were asked to indicate their agreement with any of the policy options presented.

A total of 51% of participants indicated their agreement with Option A, that County policies should support development of bikeways or multi-use paths in the County that connect popular activity centers, recreation areas, and residential areas. A total of 32% of respondents indicated their agreement that County policies should not support bikeways or multi-use trails.

RESPONSE RATE	Question 13	
	INSTRUCTION TO RESPONDENTS: SELECT EACH RESPONSE YOU AGREE WITH	
	County policies should support the development of bikeways and/or multi-use paths in the County that...	
51%	A)	connect popular activity centers, recreation areas, and residential areas.
43%	B)	connect Champaign County Forest Preserve District lands with major population centers in the County.
41%	C)	connect public water bodies, public parks, and public open spaces.
32%	D)	County policies should not support bikeway or multi-use paths.

Question 13: Additional Comments Submitted

Response A Additional Comments:

- A 'one size fits all' policy won't work. These connections must be mediated over long decades to accommodate reasonable needs of the population at large with the reasonable expectations of land owners.
- Respondent wrote next to choice A: "We need to teach respect of others' property when passing through."

Response C Additional Comment:

- No policy to acquire land to connect bodies of public ownership.

Response D Additional Comment:

- Respondent struck out the word "support" in choice D and wrote "legislate."

Question 13 General Comment:

- I feel this is really important. Many bikers use the road we live on - 1400N - and we are worried about safety and traffic impacts.

*** Question 14

Question 14 focused on policy preferences regarding generally where recreational trails should be located. Workshop participants were asked to indicate their agreement with any of the policy options presented.

A total of 43% of participants indicated their agreement with Option A, that recreational trails might be built on private lands, easements, or along stream corridors, provided that landowners have consented to this use of private land. A total of 37% of participants agreed with a policy that recreational trails only occur on public property or rights-of-way. 25% of respondents indicated their agreement that County policies should not support bikeways or multi-use trails.

RESPONSE RATE	Question 14	
	INSTRUCTION TO RESPONDENTS: SELECT EACH RESPONSE YOU AGREE WITH	
	County policies should encourage the development of bikeways and/or multi-use paths in the County....	
43%	A)	that might be built on private lands, easements, or along stream corridors, provided that landowners have consented to this use of private land.
37%	B)	only on public property and rights-of-way.
25%	C)	County policies should not support the development of additional bikeways and/or multi-use paths in the County.

Question 14: Additional Comments Submitted

Response A Additional Comments:

- No tax monies should be spent on such.
- Increased bike paths would allow for more people to safely ride their bikes to work, thereby lowering traffic congestion + wear + tear on roads.
- I think we should use eminent domain for these paths and bikeways if necessary.
- Greenways are essential for establishing and maintaining connections between urban residents and nature. They also offer a community alternative for rural residents. County policies should fully support a rich network of interconnected greenways.
- When roads are improved or widened, consideration should be given to including a lane for bikes.
- Let us do everything possible to support 'green' lifestyle and general health through exercise!
- Respondent wrote "and public lands" next to choice A.
- Certainly all highway improvements should include bikeways.
- I don't really think they are all that needed but they could be nice.
- Respondent wrote "public" next to choice A.
- Respondent wrote "public and" next to "private lands" in choice A.
- Respondent put a question mark next to choice A and wrote: "not sure".

Response B Additional Comments:

- Respondent #115 wrote next to B: "No subsidy to private owner."
- With regards to letter B. The existing rights-of-way are not for a trail, and should thus not be used for such.

Response C Additional Comments:

- There is a serious problem with pathways/bikeways going across private land. If the bikeways could be built along existing public roads, that would be okay. Otherwise, I would not support anything else.
- No new trails.
- Natural area pathways are important ecologically. And natural areas should be protected for recreation. But the existing roads are already nice enough for cycling!

Question 14: Additional Comments Submitted (continued)

Question 14 General Comments:

- I like them in town, but the headaches over long miles and multiple property owners are a very real issue. Reminds me of a nursing home fiasco/ can of nuts.
- License all bikes in county with one time license fee.
- The main bike dangers are where all forms of transportation including walking intersect.

*** Question 15

The focus of Question 15 was 'alternative energy', an energy source with potentially dramatic impacts on the landscape of the County. Workshop participants were asked to select each policy option presented within which they agreed.

The policy option that received the most agreement, with 50% of workshop participants agreeing, was Option B –to encourage alternative energy sources or facilities with reduced impacts to viewsheds. 39% of workshop participants agreed that County policies should encourage the identification of scenic viewsheds and develop a plan to minimize visual disturbance to identified scenic viewsheds. 3% of workshop participants agreed that County policies should discourage alternative energy sources or facilities altogether.

RESPONSE RATE	Question 15	
	INSTRUCTION TO RESPONDENTS: SELECT EACH RESPONSE YOU AGREE WITH	
	County policies should	
30%	A)	limit the siting of alternative energy generators to unobtrusive yet effective locations.
50%	B)	encourage alternative energy sources / facilities with reduced impacts to viewsheds within the County.
3%	C)	discourage alternative energy sources / facilities altogether.
39%	D)	encourage the identification of scenic viewsheds within the County and develop a plan to minimize visual disturbance to identified scenic viewsheds.
21%	E)	none of the above

Question 15: Additional Comments Submitted

Response A Additional Comment:

- I have serious doubt about the current technology's ability to be productive in Champaign County, therefore no large wind farms at present time.
- No ethanol plants!! They waste our water for very little positive impact on solving the energy crisis. (I know this isn't a 'view' problem, but I feel it is a worse problem than blocking my view!)

Response B Additional Comments:

- I think 'view sheds' will become less important over time.
- Developing our County's alternative energy resources is essential for sustaining our way of life, and should be encouraged! However, it is unreasonable to consider some combination of incentives and resolutions to prevent alternative energy facilities from having a detrimental impact.
- People have property rights, but they do not have private scenic view rights. They just have to get used to it!
- Discourage ethanol plants! If not prohibit them.
- Viewsheds should 'not' be considered.
- Respondent wrote next to B: "Even if it disturbs view sheds it will be less impactful than conventional energy source production."

Question 15: Additional Comments Submitted (continued)

Response E Additional Comments:

- Wind farms will be built where the best wind patterns are, county policy would hinder development of wind farms, and everyone would love the important tax revenue. If they were built elsewhere.
- We need to encourage alternative energy sources.
- Scenic views are hard to define - to me everywhere is a scenic view.
- We need to completely support wind farms in this county.
- County should encourage safe alternate energy sources.
- I think that alternative energy development is very important AND the beauty of our County. But: I think windmills can be very beautiful.
- Encourage the use of alternative energy (wind) sources wherever possible, I do not find the wind generators visually disturbing, but would probably not advocate them for wooded parks.
- Prohibit ethanol plants that use aquifer water.
- Look at it on a case by case basis.
- Encourage - every subdivision should have wind powered generators and solar panels.
- With two environmentally - sensitive houses on Fairview in Urbana as ideal construction here in our midst, can the County include publicizing them as models of energy efficiency? Katrina Klingenberg (sp?) deserves recognition and local support, as well as international! We'd like to see self-sufficient energy supply - one or two wind turbines per cluster of houses - In Texas, a school in a rural area put up its own turbine and is now supplying the entire small town with energy and selling the excess to the grid. In Holland, their windmills were initially considered an eyesore! For years now the perception is that tourists need to go to the Netherlands to see them.

Question 15 General Comments

- Viewsheds are impacted by more than alt. energy sources, e.g. scattered development.
- No windmills!! Not anywhere!
- Not in my backyard attitude needs to be high priority - plan ahead and beautify being green.
- Bird migration corridors must also be considered.

EXIT QUESTIONNAIRE
Question 1: Gender

RESPONSE RATE	What is your gender?
30%	Female
70%	Male

Question 2: Race

RESPONSE RATE	Please tell us which ethnic or racial group you most closely identify with:
1%	Black/African American
1%	Asian
92%	White/Caucasian
1%	Other

5% No Response

Question 3: Ethnicity

RESPONSE RATE	Are You Hispanic or Latino?
1%	Yes
92%	No

7% No Response

Question 4: Age

RESPONSE RATE	What is your age?
0%	Under 20
2%	20-24 years
10%	25-34 years
9%	35-44 years
23%	45-54 years
28%	55-64 years
19%	65-74 years
6%	75 or older

3% No Response

Question 5: Income

RESPONSE RATE	Please tell us about your annual household income:
2%	Less than \$15,000
5%	\$15,000 to \$34,999
5%	\$35,000 to \$49,999
19%	\$50,000 to \$74,999
27%	\$75,000 to \$99,999
27%	More than \$100,000

16% No Response

Question 6: Education

RESPONSE RATE	Please tell us about your education attainment level:
0%	Less than a high school diploma
10%	High School Diploma (GED)
16%	Some College
36%	College Graduate
7%	Post Graduate Study
26%	Post Graduate Degree

4% No Response

Question 7: Tenure

RESPONSE RATE	How long have you lived in Champaign County?
5%	0-4 years
3%	5-9 years
9%	10-19 years
41%	20+ years
38%	Life-long resident

3% No Response

Question 8: Residence

RESPONSE RATE	Where do you live?
1%	Village of Broadlands
6%	City of Champaign
1%	Village of Dewey
1%	Village of Fisher
2%	Village of Ivesdale
3%	Village of Mahomet
1%	Village of Philo
1%	Village of Rantoul
3%	Village of Savoy
1%	Village of Seymour
2%	Village of Sidney
3%	Village of St. Joseph
1%	Village of Thomasboro
1%	Village of Tolono
16%	City of Urbana
3%	Ayers Township
1%	Brown Township
3%	Champaign Township
1%	Colfax Township
1%	Condit Township
1%	Crittenden Township
1%	Cunningham Township
5%	Hensley Township
1%	Ludlow Township
3%	Mahomet Township
4%	Newcomb Township
1%	Ogden Township
3%	Pesotum Township
2%	Philo Township
1%	Rantoul Township
2%	Raymond Township
3%	Scott Township
3%	Sidney Township
3%	South Homer Township
3%	Stanton Township
5%	St. Joseph Township
3%	Urbana Township
3%	Unspecified Township

5% No Response

Question 9: Land Ownership

RESPONSE RATE	Are you a land owner in Champaign County?
90%	Yes
7%	No

3% No Response

Question 10: Occupation

RESPONSE RATE	What is your principal occupation?
18%	Farming
16%	Retired
9%	University of Illinois Employee
3%	Education
3%	Real Estate
3%	Self-Employed
3%	Management
3%	Agriculture (Exclusive of Farming)
42%	Other

Question 11: Advertising

RESPONSE RATE	How did you learn about the Land Resource Management Plan Workshop?
8%	Newspaper ad
13%	Newspaper article
24%	Sign along road
14%	Flyer
12%	County Board member
24%	Word of mouth
2%	Website
30%	Other

Question 11 Other

- Board Meeting Village of St. Joseph
- Champaign Co. Farm Bureau
- Listserv
- E-mail
- Tech Committee mtg.
- Farm Bureau
- Committee Member
- Notice circulated on web
- Fellow planners
- WILL 580 AM
- Township Supervisor
- Farmers
- Followed for last few years
- Direct mailing
- email notice from Sierra Club
- Notifications to Township, etc.
- TV
- friend

Length of Time of County Residency The demographic data collected regarding the workshop participants indicate that the majority of participants have lived in the County for 20 or more years (41%) or were life-long residents (38%).

Residency of Workshop Participants The composition of the LRMP Steering Committee voting membership was weighted to meet a rural- to-urban ratio of 2:1. Using the same criteria

used to establish rural or urban residency of the LRMP Steering Committee members, based on the demographic information provided from workshop participants, approximately 34% of workshop participants are considered 'urban' residents – (residing in the seven most populated municipalities of Champaign, Urbana, Rantoul, Mahomet, St. Joseph, Savoy and Tolono). Approximately 63% of workshop participants are considered 'Rural' residents – residing in all other areas of the County. Coincidentally, the same 2:1 rural-to-urban ratio of workshop participants designed in the Steering Committee was achieved by workshop participants. Workshop participants completing the Exit Questionnaire were asked to indicate their residency as either within an unincorporated township, or with a municipality. Based on residency demographic information provided in the Exit Questionnaire, workshop participants who listed their residency were present from unincorporated areas of 24 different townships. No participant listed a residence in: Compromise, Kerr, Sadorus, Somer or Tolono Township. Based on the Exist Questionnaire, workshop participants living in these municipalities were present: Broadlands; Champaign; Ivesdale; Mahomet; Philo; Rantoul; St. Joseph; Savoy; Sidney; Thomasboro; Tolono; and Urbana. No participants listed a residency in the following municipalities:

- Allerton
- Bondville
- Foosland
- Gifford
- Homer
- Longview
- Ludlow
- Ogden
- Pesotum
- Royal
- Sadorus

Occupation of Workshop Participants Based on demographic information collected regarding the workshop participants, 21% of the participants listed their occupation as farming or agriculture. 16% of participants listed themselves as retired.

PUBLIC WORKSHOP - MAPPING EXERCISE RESULTS

The mapping exercises provide a mode for educating residents about specific land-based conditions as well as a way to collect information about specific places. Education comes in the form of information provided on the map, as well as through discussion and problem solving provided in the exercises. The final product benefits from the collection of ideas given by the participants. One product of the Champaign County Land Resource Management Plan that is directly related to these exercises is a Future Land Use Map. The map, along with the Plan, does not contain legally binding regulations or decision. However, it will be used as a reference guide when questions arise that involve land use decisions.

Groups of approximately eight people were formed and participants were seated at tables surrounding a large paper map, with markers and smaller reference maps. The reference maps include planning jurisdictions, municipal comprehensive plans, municipal growth, county permits for new residences, and farmland conversion. Groups were intentionally divided so that diverse opinions could be expressed and individuals might share and learn from other group members. A majority of community mapping exercises are designed to provide consensus-based responses. This was not desirable in this case due to the large amount of area considered, issue complexity, and diversity of opinions regarding land use in any specific area.



Providing the hands on mapping experience without requiring consensus hopefully allowed a free flow of ideas and allowed each participant an equal voice. While consensus was not explicitly required, we found that groups often discussed their ideas and then agreed on the type of notation that would be placed on the map.

Topics Addressed

Mapping exercises were developed by determining the information needed to create a future land use map. The future land use map will use a set of defined land use designations that provide context and logical placement for goals and policies developed through the planning process. These exercises split land use into Agricultural and Industrial with Ecological/Environmental and Transportation Corridor overlays. These are not the only land uses under consideration, but they are the most relevant to this stage of the project and were manageable to comprehend and complete in a workshop format in the allotted time.

Exercise Format

The exercises were ordered to provide different levels of participation throughout the workshop. Exercise 1 was largely based on opinion and personal beliefs while Exercise 2 simply identified physical elements in the county. This gave groups an opportunity to explore different parts of the map and become more familiar with the areas they were looking at. Transportation corridors are generally identified by people who travel those corridors regularly. Exercise 3 required people to readily identify a corridor but then look for specific attributes that would fit a set of criteria. Exercise 4 asked people to locate areas in the county that were suitable for industrial development. In discussing the possibilities, more criteria were generated through discussion, eventually leading to well defined places. Exercise 5 allowed participants to summarize and discuss any other elements they were concerned about.

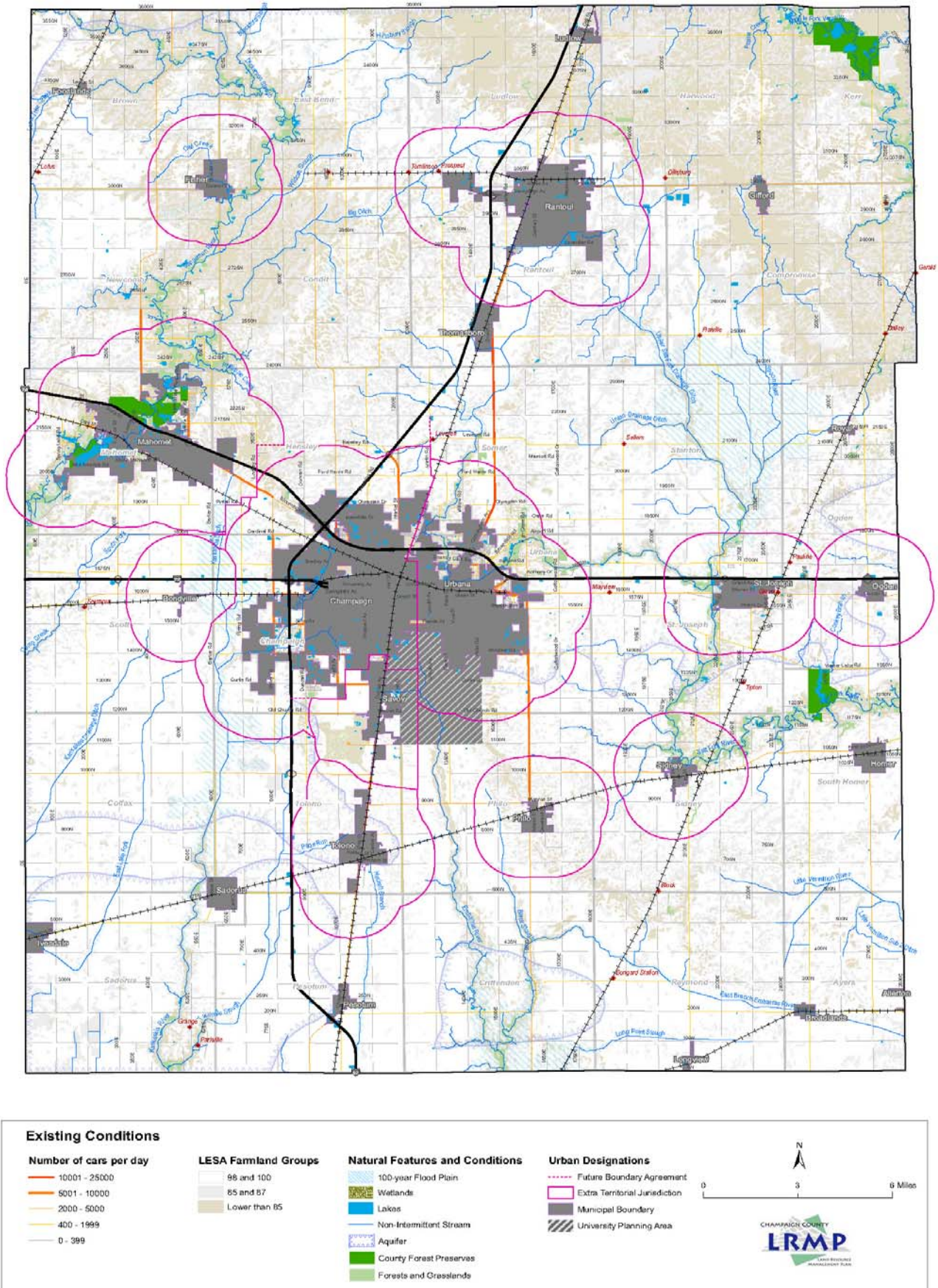
Tools

Workshop participants were provided large maps of Champaign County, large markers, and comment sheets. Maps included information about Land Evaluation Site Assessment soil scores (LESA), average daily traffic counts for major roadways, forested and grassland areas, flood plains, wetlands, aquifer, and municipal boundaries and jurisdictions. This information intended to provide participants with relevant information to reference while answering a series of questions.

Data Synthesis

Each question had a specified notation provided allowing for easy identification during analysis. Analysis consisted of scanning the paper maps and creating a digital version of the shapes and symbols placed on each map. These shapes and the associated notations were synthesized to create rough areas of agreement. Taking all of the ideas and synthesizing them to one map provide a summary of the thoughts generated through the workshop.

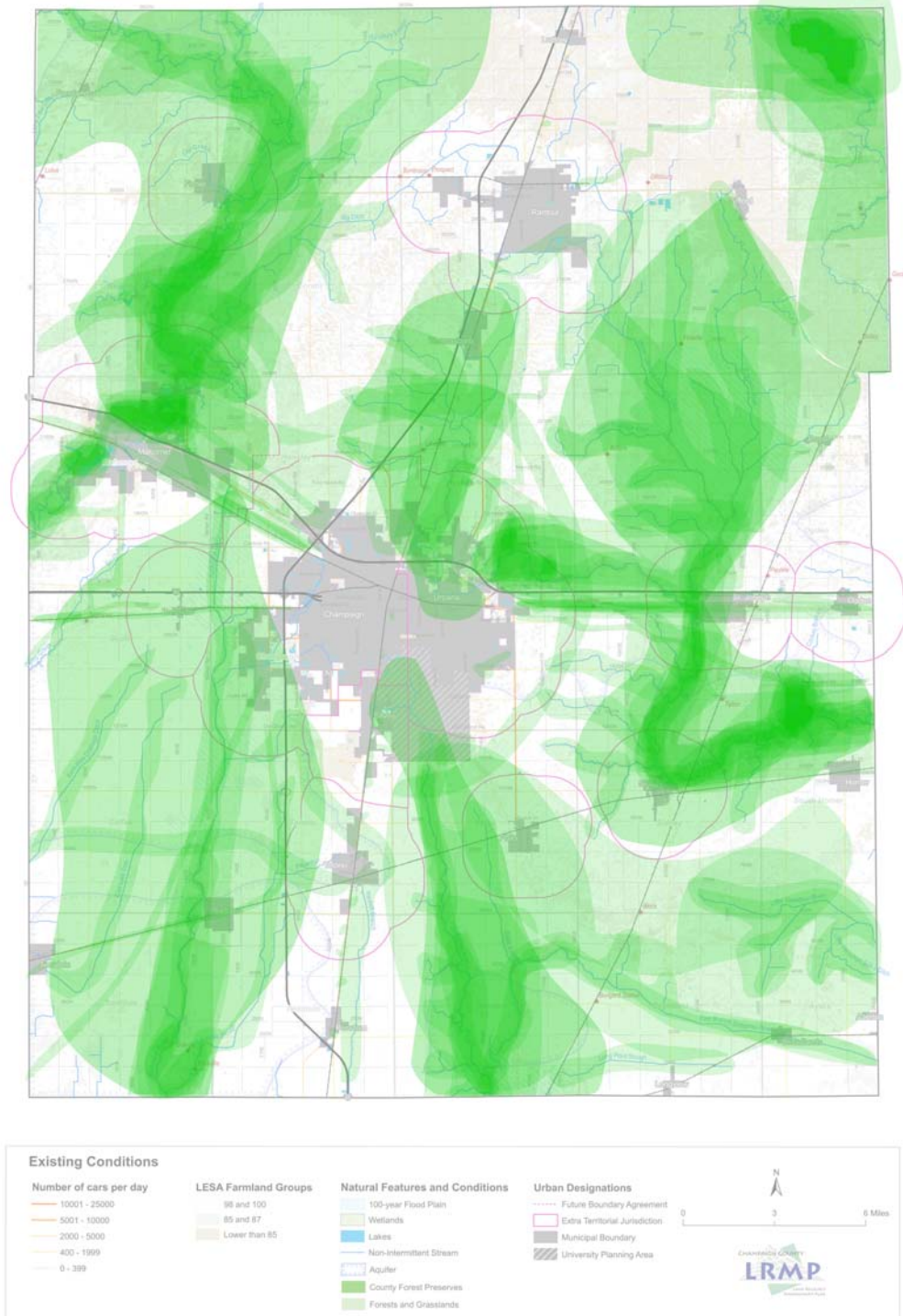
Champaign County Land Resource Management Plan - Workshop Basemap



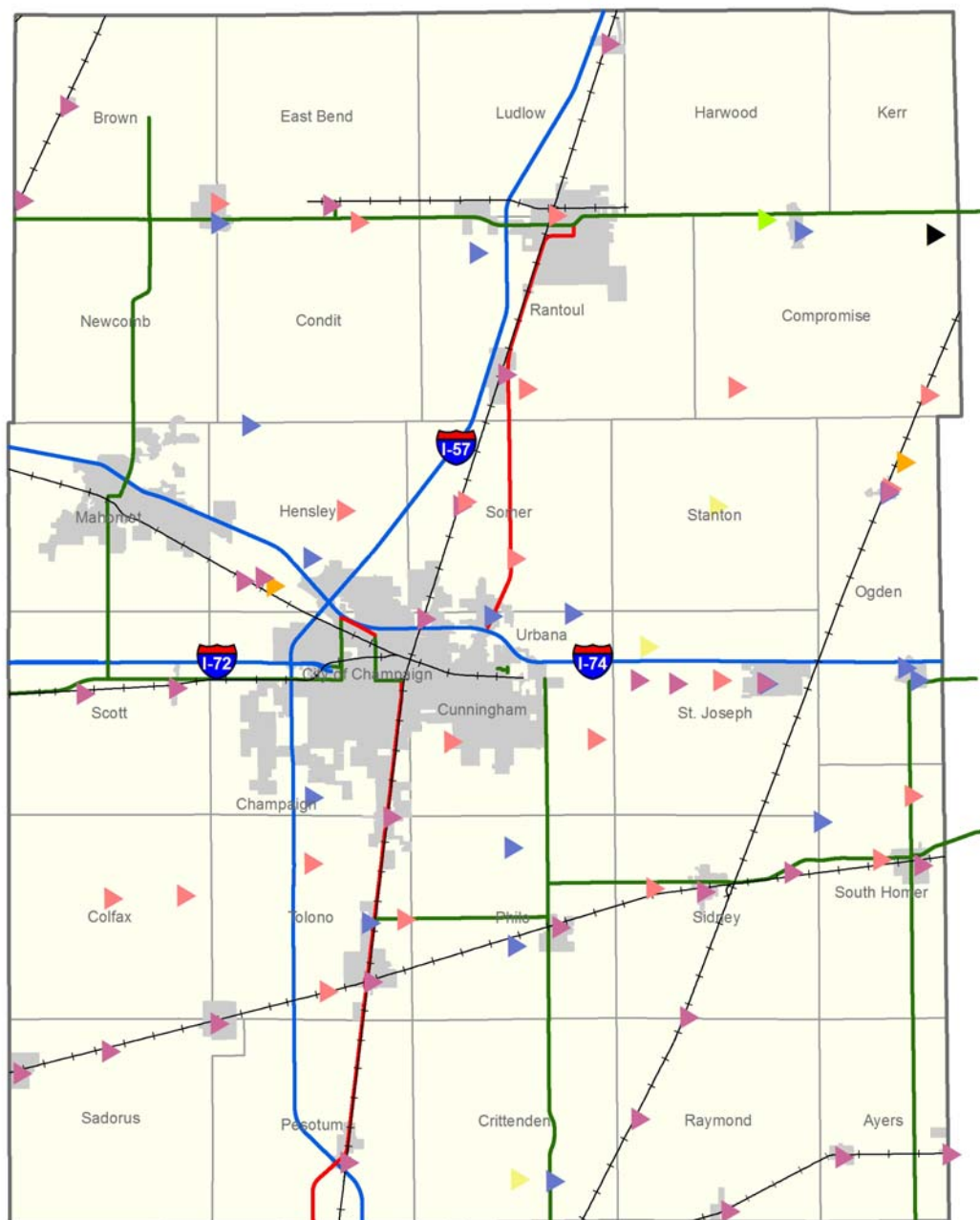
Mapping Exercises

- 1A: Identify areas of environmental and ecological value that are important to preserve regardless of ownership or expense. Describe them if it is not clear what the unique feature is for the areas.
- 1B: Identify areas that you believe to be scenic landscapes that you feel should be preserved purely for their visual qualities. With a thick green line, also draw approximate locations where you would like to see trails connecting natural areas.

Champaign County Land Resource Management Plan - Workshop Basemap



- 2: Identify agriculture related businesses and infrastructure (i.e. grain elevators, implement stores). On a separate sheet of paper, write down the name of the establishment and the number with which you have identified it on the map



Agricultural Infrastructure

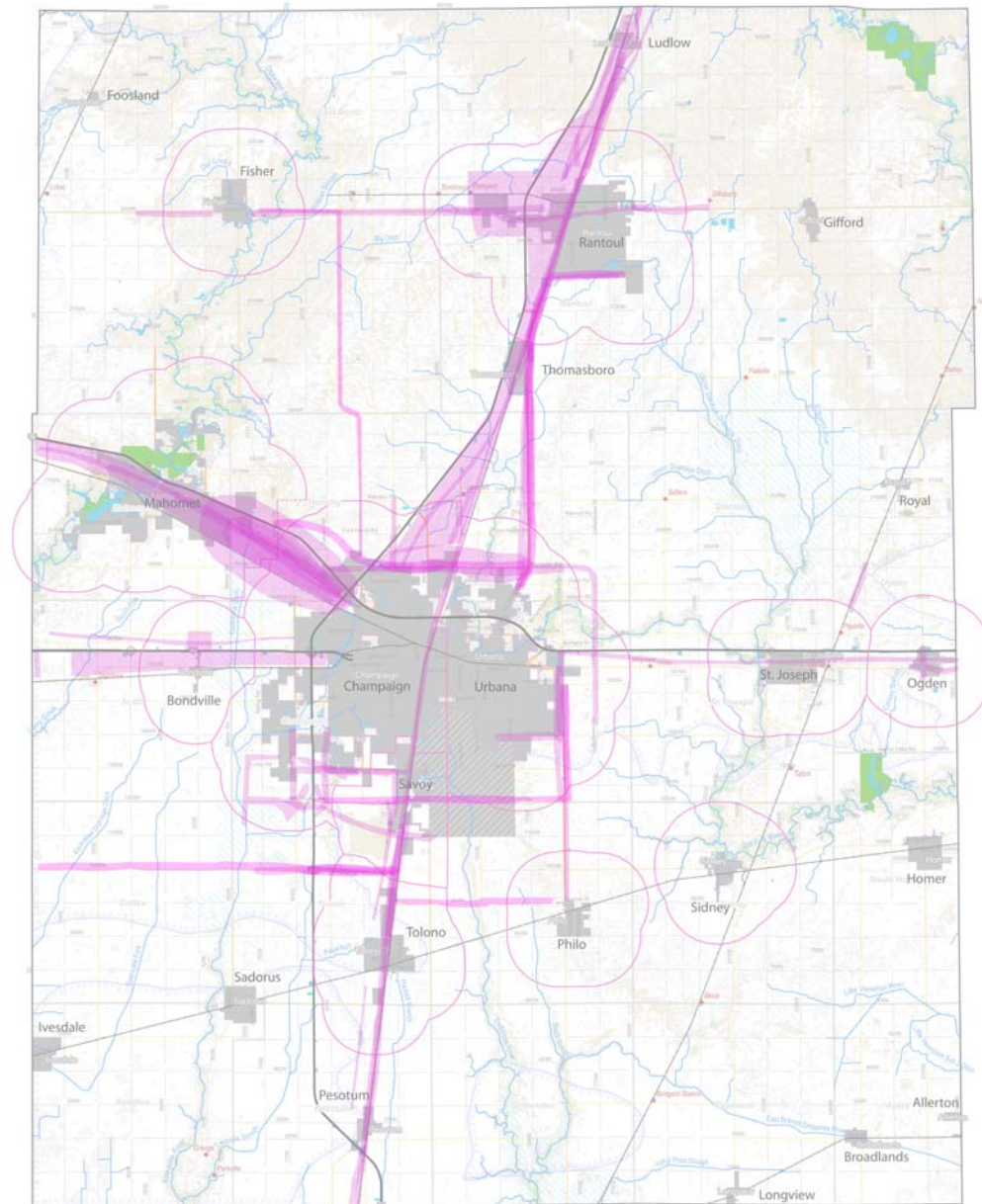
Champaign County

Legend

- | | | |
|----------------------------|----------------|---|
| Agri-Business | Fairgrounds | Truck Routes
Class I
Class II
Interstate |
| Auction Site | Grain Elevator | |
| Ethanol Plant Site | Rural Business | |
| Commercial Plant Nurseries | | |
| | | |

- 3: Identify potential transportation corridors that: Provide access within 3 miles to at least two major roadways, railroad lines, or airports AND you believe would be suitable for commercial, office, or industrial development.

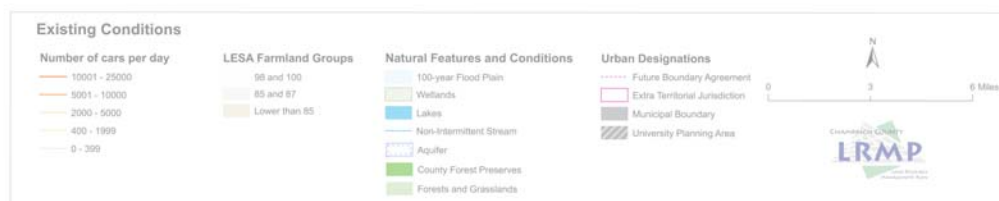
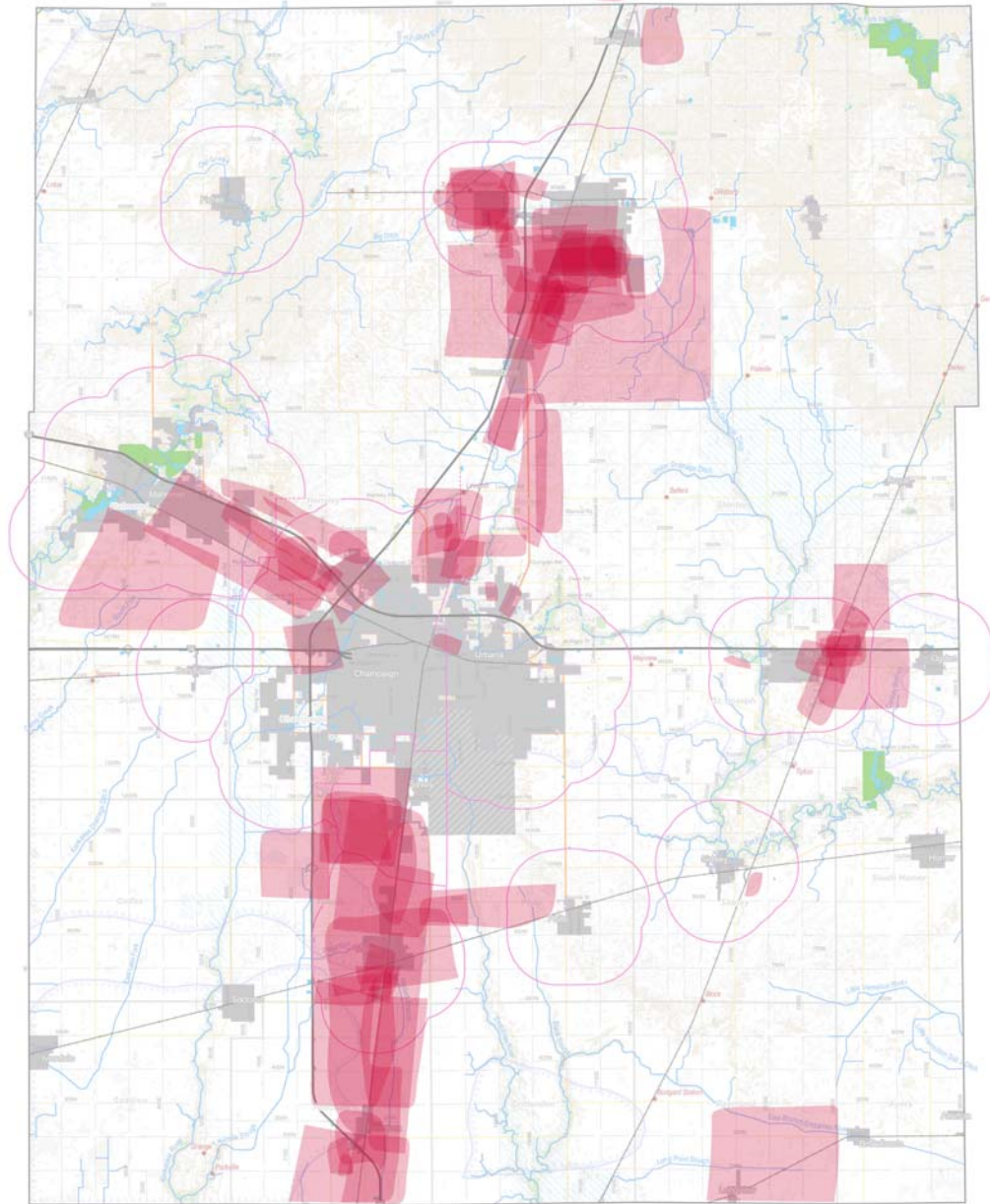
Champaign County Land Resource Management Plan - Workshop Basemap



- 4: An industrial firm wants to locate in Champaign County. Assume for the purposes of this exercise that: They can develop anywhere. They need access to rail and highways. Water supply and available infrastructure are not factors in selecting sites. Proximity to the larger municipalities is not necessary.

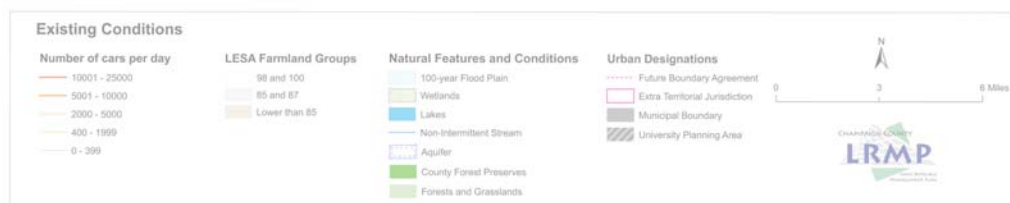
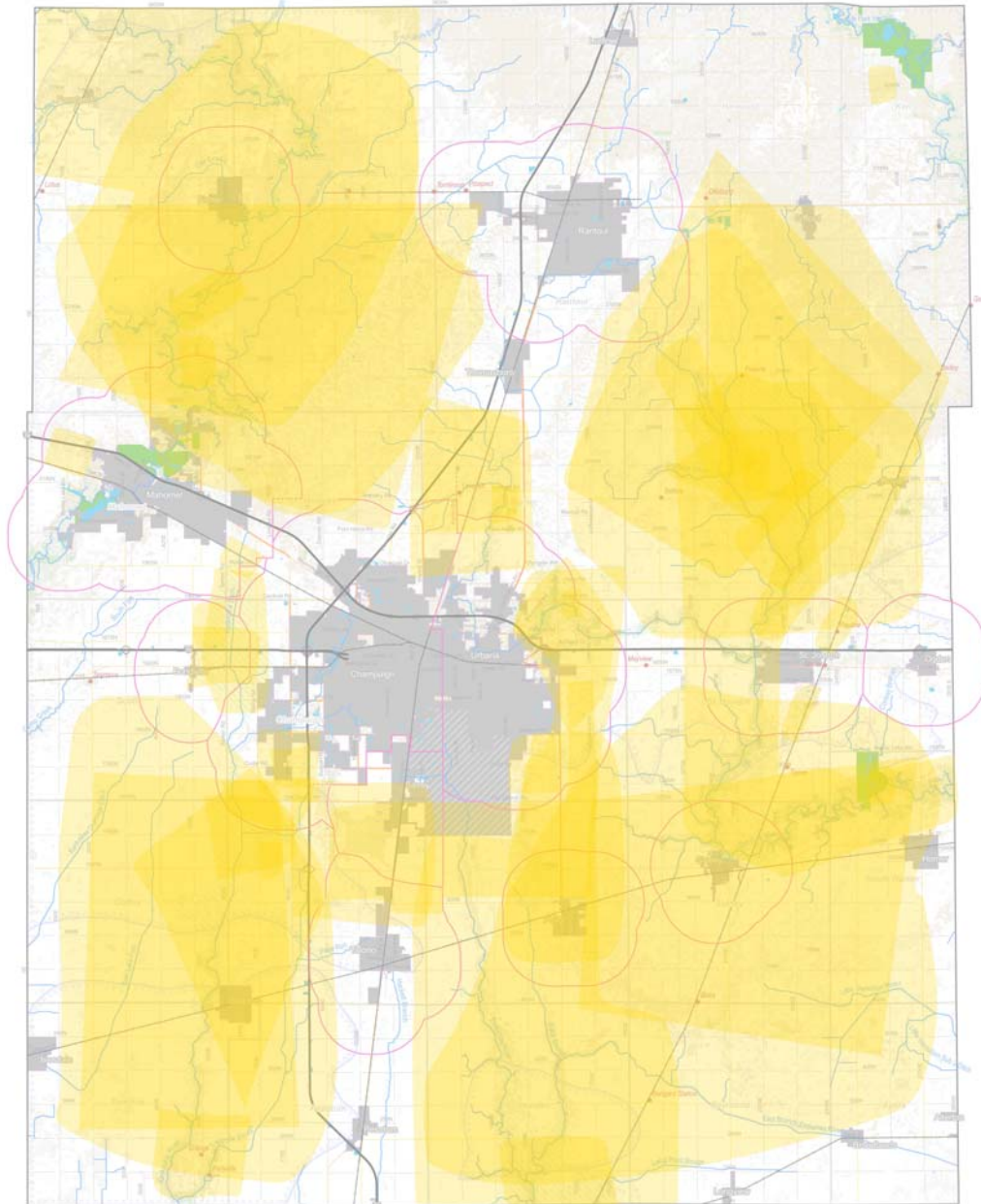
4A. Where do you recommend they locate?

Champaign County Land Resource Management Plan - Workshop Basemap



- 4B. What areas should be protected from this type of development? Identify as many areas as possible based on the assumptions using a red polygon with an X through it.

Champaign County Land Resource Management Plan - Workshop Basemap

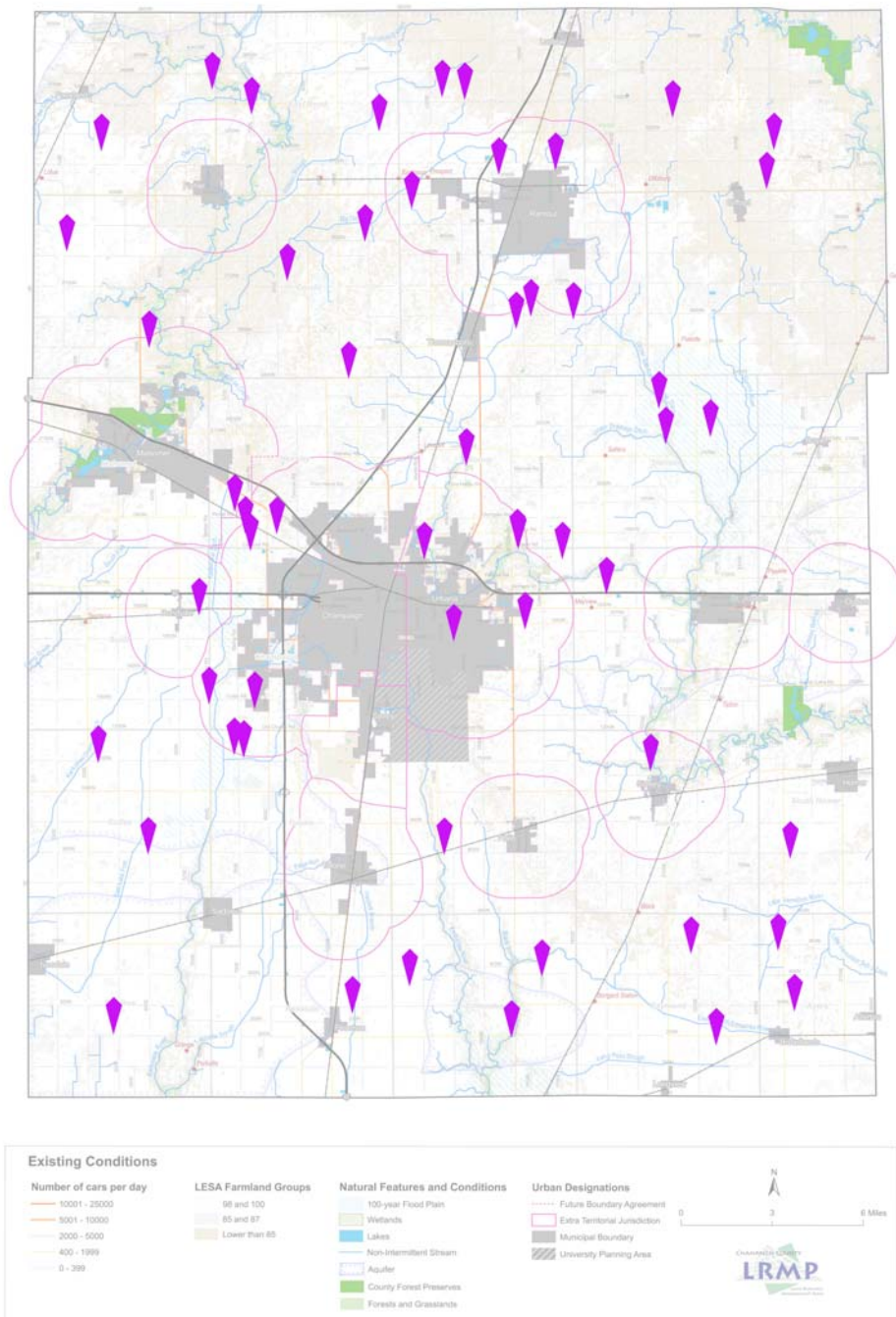


- 5: Please map and/or write down any issues (problems) or forces (strengths) you feel are relevant to land use in the County. This can be discussed as a group, but all individual ideas should be noted.

Note: The locations on these maps are connected to explanatory text provided by workshop participants. The major themes and locations of this input is provided in the Issues and Strengths synthesis map.

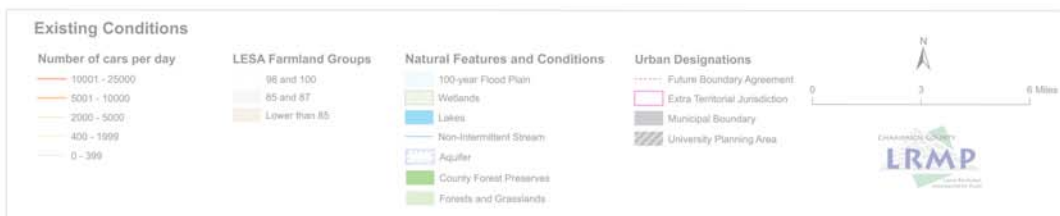
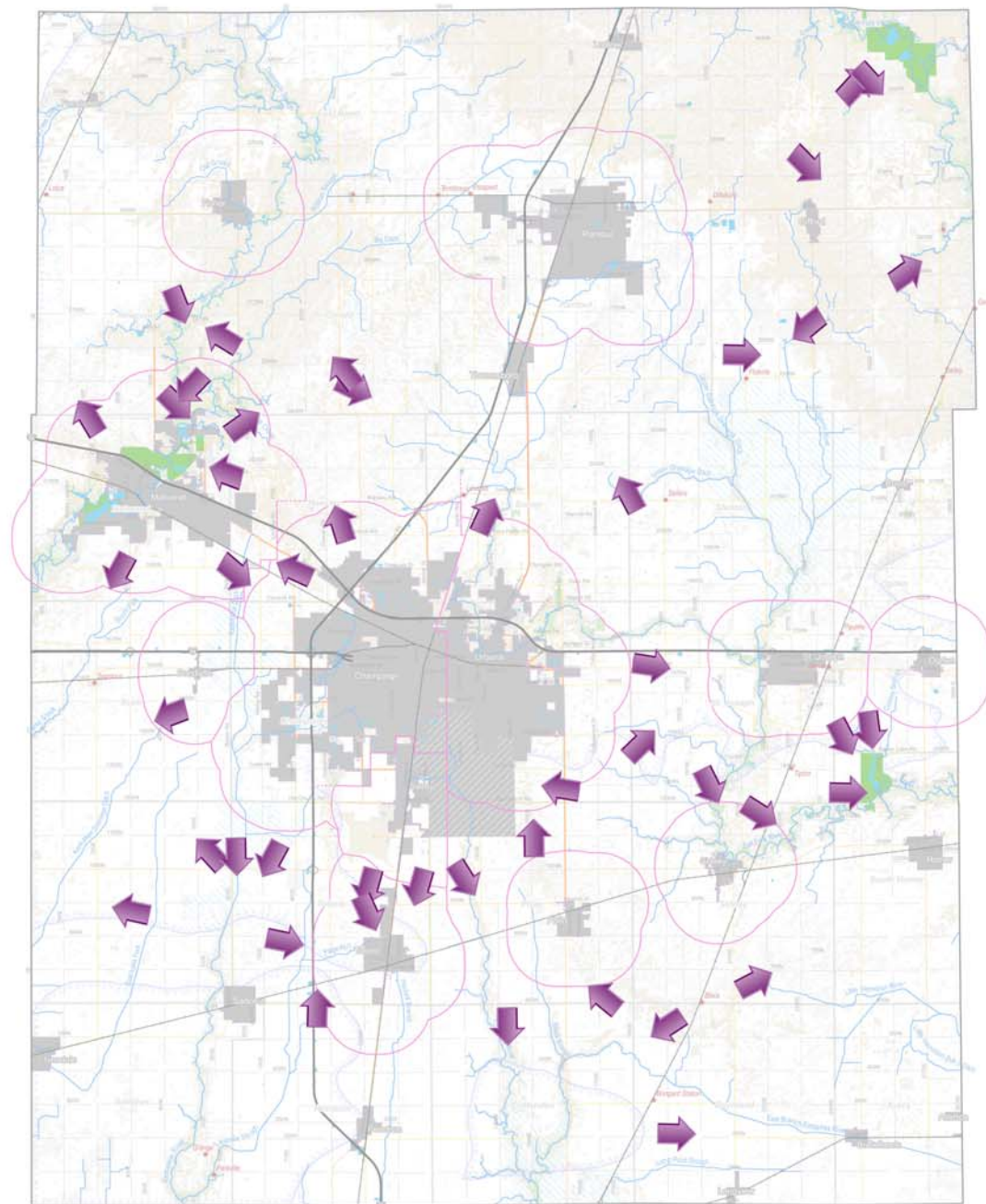
Issues

Champaign County Land Resource Management Plan - Workshop Basemap



Forces

Champaign County Land Resource Management Plan - Workshop Basemap



Data Analysis

Combining all of these ideas onto a single map shows conflicting preferences or areas where greater detail is needed to analyze the issues.

Further Analysis

The information provided in the compilation map will be analyzed to determine logical boundaries and solutions to conflicting preferences. Boundaries will be defined according to a series of criteria including natural features, proximity to municipalities, and other ideas provided through the workshop and best management practice literature. This process will lead to a future land use map that is based on input provided in the public workshop.

General Comments Received From Workshop Participants

A comment sheet was distributed to those attending the workshop as they entered the workshop. The comment sheet invited workshop attendees to communicate ideas they had about the LRMP process; their perspectives on land use, development, or other relevant topics; suggestions for staff; or things they feel have not considered sufficiently in the LRMP planning process.

Below are the responses received on the 22 comment sheets returned to LRMP staff after the public workshop.

- 1) "Excellent process - how can we keep the idea exchange going? The issues are urgent, and people are responding to your leadership, which is needed!!"
- 2) "Approve of this planning exercise - thanks! We're concerned about the political pressure exerted by developers and unconstrained development. Also about aquifer use and protection. Building codes for new buildings - energy efficiency would be good."
- 3) "Wording of some questions could be interpreted differently. Developers should have to pay for sewerage and other infrastructure when they develop big tracts. City governments are in difficulty because they don't require it. And taxes must be raised to pay for roads, schools etc. If they have to pay for infrastructure it may not be so advantageous to wipe out farmland."
- 4) "I am glad you are doing this process. Most people in the county do not understand 'agriculture,' farmland use and how important growing crops is to our economy, our food supply, etc. It might help in the community forums that a background be presented on the general agriculture so people have reference to farmland. Without some educational understanding how can they make an informed decision? Without knowing the agriculture industry impact they don't realize how important land preservation is. This should be done to set the stage for the meeting."
- 5) "I was very pleased with the process. I felt the idea sharing was great and very open."
- 6) "Private property is only private because of our representative government. If the citizens of Champaign Co. decide to protect farmland - The County Board should support the notion."
- 7) "We should focus our attention to preserving our one of a kind soil. There are opportunities for infill and I think we need a force such as this to push for the re use of these opportunities instead of new development of our precious soil."

General Comments Received From Workshop Participants (continued)

- 8) "Champaign County is part of a special area of land that is found in only one other area in the world. Based on the soil and climate, we can grow crops in quantities unthought of in other portions of the country. This is a virtue of this area that must be protected. Once developed, the ground will never be productive again. Once gone, we can't make more. You can build houses on any kind of ground. Why use ground that can't be found anywhere else?"
- 9) "This promises to turn out better than big/small/all! A lot of common themes emerged! A lot of common interests and agreement on what needs to be protected and how development should proceed (or not proceed). Development needs to fill in, stay in town, and stay off farmland and out of habitat/woodland areas. Compact/contiguous development. Regulation/Land use plan is important and should be applied equally to all."
- 10) "I like the idea that you are gathering people to gain their perspectives. I think we are trying to be proactive and not just sit back and let things happen. I believe that good farmland needs preserved. I am not against subdivision but they need to be well thought out and next to other towns."
- 11) "1. Need more (some) focus on bike paths! 2. Focus on trails - not in exercise 3. Need to stop sprawl 4. Need to make walking and non car use high priority 5. Reuse vacant buildings or level and return to green. 6. No water dumped while making ethanol 7. Preservation of water! 8. Support park district, city, county, etc."
- 12) "Ethanol plant projects really scare me. The high volume of water used and the volume discharged into waterways (damaged water quality) that can't handle that flow without further damage to the waterways. Drainage Districts need to be controlled."
- 13) "Number 1A the words to preserve regardless of ownership or expense! Very strong words! I think I'm afraid of how far you will take this! I feel there tearing up lot of ground for subdivisions and big stores! Start there, don't mess with the little people! No new regulations on woodland!"
- 14) "The hardest part of the map exercise is that most of the County issues are within the 1.5 mile ETJ and are not in the County's total control. Until things like the current "Chatham" ruling and more county say up to municipal boards is possible, there is not a lot to do with the remaining areas that are not already in land use policy and to some extent zoning laws."
- 15) "County policies or regulations, in general, should not restrict what an individual landowner can do with his property. What they should restrict is developers buying up large tracts of farm ground and putting up dozens or hundreds of houses. Policies or regulations should not be created which require any new tax money."
- 16) "Aquifer management is crucial."
- 17) "Good process - liked the open forum. Hopefully urban sprawl can be controlled yet still allowed to happen. Landowners need right to develop within reasons."
- 18) "I think zoning and land use protection should be left to townships - they know best for their own areas!"

General Comments Received From Workshop Participants (continued)

- 19) "Politics have caused problems and confusion with issues that need to be addressed long term not short term. Don't want County Board to incur more costs for programs w/o getting approval from voters."
- 20) "Public opinion may allow uninformed statements and positions, however plans leading to actions with consequences should encourage more informed formulations. It seems to me that this process is more likely to reflect 'public opinion' of self selected individuals rather than informed formulation. It is unfortunate that so much time and effort is invested in a process that has little or no validity and is not likely to be reliable."
- 21) "I appreciated the opportunities to come together to talk about issues of importance to County residents."
- 22) "The questionnaire was created in such manner to skew the results to meet the planners' objectives. It was no surprise to hear the initial result that confirmed this theory. It was unfortunate a property rights advocate was not involved during the creation of the questions and restricted answer blocks. The report from public workshops to County Board should contain an important footnote that states property rights positions were not presented fairly. The text and wording makes this a sham. Too many people volunteered time to attend a planning session that was skewed from start to finish. The LRMP process is tainted for Champaign County."

Champaign County Land Resource Management Plan - Public Preference Survey

Property Rights and Land Use

In some cases, a policy adopted for one issue can contradict a policy on another issue. This is especially true regarding the issues of 'individual property rights' and the restrictions on development that are associated with 'community property rights'.

County policies with regard to these issues should be coordinated, in order to provide decision makers and land owners with a clear strategic set of policies to guide land use and resource management decisions.

1) *SELECT ONE RESPONSE THAT MOST REFLECTS YOUR VIEWPOINT*

- A ____ I want County policies that allow landowners in unincorporated areas to develop land as they choose. This would maximize the right to use private property but would limit controls that the County now holds, such as:
- building density regulations that limit:
number of vehicles on rural roads due to higher rural residential population
farmland converted to other uses (e.g., residences, businesses, etc.)
 - regulations regarding compatible land uses
 - building size, height and location regulations
- B ____ I want County policies that allow landowners in unincorporated areas to develop land as they choose; however, I want those landowners to pay for the costs of development, including:
- appropriate impact fees for roadway and infrastructure maintenance related to development of their land;
 - groundwater impact assessment and meeting groundwater use standards;
 - and adhering to onsite wastewater systems maintenance standards that are enforced on a regular basis.
- C ____ I want County policies that allow for an increased number of residential lots to be constructed in rural areas and that encourage clustering such developments so that natural resources, agricultural lands, and public infrastructure are optimally utilized. I realize that these County policies would lead to more restrictions on what landowners can do with their land.
- D ____ I think current County policy sufficiently balances individual property rights and community property rights.
- E ____ I want County policies that support more control over ensuring the protection of our agricultural lands, public and private natural areas, and the use of infrastructure, roadways, and water supply. I realize that these County policies would lead to more restrictions on what landowners can do with their land.

YOUR ADDITIONAL COMMENTS:

Champaign County Land Resource Management Plan - Public Preference Survey

Property Rights and Land Use

Almost all the natural areas in the County commonly considered as woodland areas or pasturelands situated alongside streams and drainageways have been developed for agricultural or other land uses or have been seriously disturbed by past land use.

In general, the woodland areas or pasturelands along streams and drainageways in the County do not contain as much prime farmland as occurs in the remaining rural areas.

2) *SELECT EACH RESPONSE YOU AGREE WITH*

Land uses other than agriculture

A ____ should not be accommodated in rural areas, including in privately owned wooded areas and pasturelands situated alongside streams and drainageways in the County.

B ____ should not be accommodated in rural areas except in areas of less productive soils.

C ____ should be accommodated in rural areas only if the disturbance of public or privately owned natural areas is minimized.

D ____ should be accommodated in rural areas, including in privately owned wooded areas and pasturelands situated alongside streams and drainageways in the County.

YOUR ADDITIONAL COMMENTS

Champaign County Land Resource Management Plan - Public Preference Survey

Property Rights and Land Use

Champaign County is located within the "Grand Prairie" Region of the state. Within this region, trends generally include habitat fragmentation and other physical changes that are considered a threat to the ecosystem.

The splintering of wetlands, prairies, and woodlands into fragments makes it harder for small, isolated populations of plants and animals to breed, and leaves them vulnerable. Competition from exotic plant species often increases as well, since many exotics plant species thrive along the increased 'edge' environment produced when contiguous habitats are split by development.

3) *SELECT EACH RESPONSE YOU AGREE WITH*

County policies should support ...

- A ____ protection of large, continuous areas of woodlands, pastures, or grasslands.
- B ____ public outreach and education regarding the benefits of large, continuous areas of woodlands, pastures or grasslands and best management practices of maintaining these areas.
- C ____ acquisition of conservation easements through donation, purchase, or other privately funded means.
- D ____ establishment of ecological infrastructure that provides services such as pest control, insect pollination, soil retention, flood control, soil formation and others.
- E ____ establishment of a minimum distance separation (a 'buffer') between established public parklands and public or private preserves and newly proposed adjacent land uses.
- F ____ landowners' right to use their land as they see fit.

YOUR ADDITIONAL COMMENTS

Champaign County Land Resource Management Plan - Public Preference Survey

Farmland Conversion

Approximately 77% of the soil in the County is considered best prime farmland. In outlying rural areas, the development of farmland and 'piecemeal' rural development has the potential to convert best prime farmland to other land uses, further increasing impacts on existing infrastructure and natural resources.

County policies can support regulations that limit the development of farmland to other land uses in outlying rural areas.

[Note: The County has no authority to restrict or limit a landowner's ability to annex property to an adjacent city or village. That decision is strictly between a landowner and the city or village.]

4) **SELECT EACH RESPONSE YOU AGREE WITH**

County policies should...

A ____ limit development of farmland by adopting a voluntary Agricultural Preservation Areas program.

B ____ minimize impacts to farmland by encouraging separation areas (buffers) between newly created non-farm land uses and existing farmland.

C ____ allow development of farmland and its conversion to non-farm land use, if desired, by the landowner.

D ____ none of the above

E ____ other - PLEASE DESCRIBE: _____

YOUR ADDITIONAL COMMENTS

Champaign County Land Resource Management Plan - Public Preference Survey

Farmland Conversion

The soils, landscape, climate and location of Champaign County constitute a uniquely productive setting for producing row crops and contains more than a half million acres of the most productive farmland in the world.

The current County land use policies allow for a limited range of land uses other than agriculture to occur on all soils. These land uses are generally those with:

- *lower impacts to surrounding agricultural operations;*
- *limited impacts to available natural resources; and*
- *traffic levels not exceeding capacity of rural infrastructure.*

Certain higher standards are required to be met if these land uses are proposed to be located on best prime farmland.

5) SELECT ONE STATEMENT YOU MOST AGREE WITH

- A ____ A limited range of land uses should be allowed on all soils, including best prime farmland, provided that higher development standards are met on best prime farmland.
- B ____ A limited range of land uses should not be allowed on best prime farmland soils, but should be allowed on other less productive soils.
- C ____ A wider range of land uses should be accommodated on all soil types in the County.
- D ____ All land uses should be allowed on all soil types in the County.

- *Under current County policies, rural residential subdivisions on “best” prime farmland soils must meet higher, more stringent, development standards.*

6) SELECT ONE STATEMENT YOU MOST AGREE WITH

County policies should:

- A ____ not use soil type as the basis for different development standards.
- B ____ maintain existing standards for development on soils currently identified as “best” prime farmland soils.
- C ____ maintain existing standards for development on the best prime farmland soils, but the definition of best prime farmland soils should be re-evaluated to be more exclusive (i.e., to include fewer soils).

YOUR ADDITIONAL COMMENTS

Champaign County Land Resource Management Plan - Public Preference Survey

Farmland Conversion

Between 1988-2005 in Champaign County, residential lots located in rural areas accounted for 46 % of all farmland converted to residential land use.

Under current County regulations, rural residential subdivisions may be approved on suitable land provided that:

- *conversion of prime farmland is minimized*
- *road infrastructure and public services are adequate*
- *potential conflicts with agriculture are minimized*

7) **SELECT ONE STATEMENT YOU MOST AGREE WITH**

County policies should support...

A ____ farmland conversion allowed under the current County regulations. (The current County regulations generally allow up to 3 or 4 residential lots and an unlimited number of 35-acre residential lots, plus rural residential subdivisions if rezoning is approved.)

B ____ more farmland conversion to non-farm uses such as residences, businesses or recreation uses, provided that ...

IF YOU SELECTED B, CHECK EACH CONDITION YOU AGREE WITH

- ____ farmland is converted only adjacent to urbanized areas
- ____ landowners/ developers absorb added costs of infrastructure improvements
- ____ adequate public facilities and services are available (financed by public tax money)
- ____ conflicts with agriculture are minimized
- ____ compact clustered development methods are used
- ____ none of the above
- ____ other - PLEASE DESCRIBE: _____

C ____ more restrictive regulations so that less farmland is converted.

IF YOU SELECTED C, CHECK YOUR MOST PREFERRED OPTION

- ____ generally allow only 1 new dwelling per 40 acres owned
- ____ generally allow only 2 new dwellings per 40 acres owned
- ____ allow no residential development (other than farm-related) in designated agriculture districts
- ____ other - PLEASE DESCRIBE: _____

YOUR ADDITIONAL COMMENTS:

Champaign County Land Resource Management Plan - Public Preference Survey

Rural Residential Development

The current County policies support the 'as-of-right' residential zoning allowance that a landowner may create up to 3 or 4 new residential lots plus an unlimited number of 35-acre residential lots on which a home may be built.

This County zoning provision allows limited development in rural areas, located in such a way that the County can be reasonably certain that it will not overburden existing infrastructure and roadways, or violate other County policies.

8) **SELECT ONE STATEMENT YOU MOST AGREE WITH**

County policies should support ...

- A ____ a lower limit on the number of new residential lots allowed 'as of right'. Examples of possible lower limits are: 1 new residential lot per 40 acres; or 2 new residential lots per 40 acres).
- B ____ the current 'as of right' residential allowance of up to 3 or 4 new residential lots, plus an unlimited number of 35-acre residential lots.
- C ____ an increased number of new residential lots allowed 'as-of-right', along with added measures, such as imposing developer or landowner impact fees to pay for road improvements or necessary public services, and regulations to monitor performance of onsite wastewater systems.
- D ____ an increased number of new residential lots allowed 'as-of-right' without the additional measures as described in choice C, above.
- E ____ no limits on the number of new residential lots allowed 'as-of-right'.

YOUR ADDITIONAL COMMENTS

Champaign County Land Resource Management Plan - Public Preference Survey

Rural Residential Development

Once a landowner has created all allowed 'as of right' lots, then in order to create any additional residential lots, that landowner needs to obtain approval of a rezoning request. The rezoning request must be reviewed by the County Zoning Board of Appeals and approved by the County Board.

9) **SELECT ONE STATEMENT YOU MOST AGREE WITH**

County policies should...

- A ____ support the creation of any number of residential lots on land in the County.
- B ____ support the continued practice of considering rezoning requests for rural residential subdivisions on all soils, including on best prime farmland.
- C ____ prohibit development of rural residential subdivisions only on best prime farmland used as agricultural cropland, but continuing to consider rezoning requests for rural residential subdivisions on best prime farmland in wooded areas or on less productive soils.
- D ____ prohibit development of rural residential subdivisions on all best prime farmland, but continuing to consider rezoning requests for rural residential subdivisions on less productive soils.
- E ____ prohibit all further rural residential subdivisions in the County.

YOUR ADDITIONAL COMMENTS

Champaign County Land Resource Management Plan - Public Preference Survey

Rural Residential Development

Residential development within the 100-year floodplain is subject to development restrictions that include incorporating flood mitigation measures.

To ensure that the 100-year floodplain continues to serve its natural function and to better protect regional water resources, the cumulative and secondary impacts of development in the 100-year floodplain should be considered before development occurs.

10) *SELECT EACH RESPONSE YOU AGREE WITH*

County policies should support ...

A ____ watershed planning at a regional level.

B ____ greater limits on development within environmentally sensitive 100-year floodplain areas.

C ____ fewer limits on development within environmentally sensitive 100-year floodplain areas.

D ____ no restrictions on floodplain development.

E ____ other - PLEASE DESCRIBE: _____

YOUR ADDITIONAL COMMENTS

Champaign County Land Resource Management Plan - Public Preference Survey

Rural Residential Development

Each new single family dwelling with road access onto a township road adds about 10 trips daily (on average) to that township road. Additional road traffic diminishes roadway safety and wears the road down faster, both of which may require more financial investment using primarily tax dollars.

11) *SELECT ONE STATEMENT YOU MOST AGREE WITH*

Along township roads that are at or above maximum traffic capacity...

- A ____ no additional new single family dwellings should access the township road.
- B ____ allow only one additional access per new single family 'as-of-right' dwelling to the township road.
- C ____ allow any number of new single family dwellings access to the township road if prior to construction the developer / owner / resident pays a proportionate impact fee for township road improvements.
- D ____ allow any number of new single family dwellings access to the township road without any restrictions or impact fees.

YOUR ADDITIONAL COMMENTS

LRMP

LAND RESOURCE
MANAGEMENT PLAN

Champaign County Land Resource Management Plan - Public Preference Survey

Additional Elements

Maintenance of the rural drainage system in the County continues to be important for both urban and rural areas. Maintaining the rural drainage system is required for continued agricultural use. Methods used to maintain the rural drainage system can either alleviate or aggravate potential environmental impacts to adjacent and downstream land uses.

12) *SELECT EACH RESPONSE YOU AGREE WITH*

County policies should encourage ...

- A ____ rural drainage system maintenance methods that prevent erosion, sedimentation and negative environmental impacts.
- B ____ minimizing the potential negative impacts on aquatic habitat, biodiversity (environmental health) and downstream flooding.
- C ____ drainageway maintenance methods that allow for continued natural biodiversity of a stream and that are cost effective at the same time.
- D ____ drainageway maintenance practices which may include, though generally on an infrequent basis, high impact measures (e.g., dredging or clearcutting).

YOUR ADDITIONAL COMMENTS

Champaign County Land Resource Management Plan - Public Preference Survey

Additional Elements

There is demand for additional recreational trails to be developed in the unincorporated parts of the County. Greenways that contain recreational trails can potentially connect opens spaces and major activity centers throughout the County and could occur on easements, rural roadways, and/or along stream corridors.

13) *SELECT EACH RESPONSE YOU AGREE WITH*

County policies should support the development of bikeways and/or multi-use paths in the County that...

- A ____ connect popular activity centers, recreation areas, and residential areas.
- B ____ connect Champaign County Forest Preserve District lands with major population centers in the County.
- C ____ connect public water bodies, public parks, and public open spaces.
- D ____ County policies should not support bikeway or multi-use paths.

14) *SELECT EACH RESPONSE YOU AGREE WITH*

County policies should encourage the development of bikeways and/or multi-use paths in the County...

- A ____ that might be built on private lands, easements, or along stream corridors, provided that landowners have consented to this use of private land.
- B ____ only on public property and rights-of-way.
- C ____ County policies should not support the development of additional bikeways and/or multi-use paths in the County.

YOUR ADDITIONAL COMMENTS

Champaign County Land Resource Management Plan - Public Preference Survey

Additional Elements

Alternative energy is expected to be a more important energy source in the future and may have dramatic impacts on the landscape of the County.

Certain types of energy producers could be considered as obstructive to scenic "viewsheds" and as impairing habitats in the County. (For example, a wind farm consisting of several 220 foot tall wind turbines.)

15) *SELECT EACH RESPONSE YOU AGREE WITH*

County policies should ...

- A ____ limit the siting of alternative energy generators to unobtrusive yet effective locations.
- B ____ encourage alternative energy sources / facilities with reduced impacts to viewsheds within the County.
- C ____ discourage alternative energy sources / facilities altogether.
- D ____ encourage the identification of scenic viewsheds within the County and develop a plan to minimize visual disturbance to identified scenic viewsheds.
- E ____ none of the above

YOUR ADDITIONAL COMMENTS

End of Survey

Please complete the Exit Questionnaire on the following page

Thank you for participating!!



Champaign County Land Resource Management Plan - Public Preference Survey

Exit Questionnaire

Before you leave, please take a moment to answer the following questions. Your feedback is crucial to documenting your participation in the Champaign County Land Resource Management planning process and will improve future planning efforts in Champaign County.

NOTE: ALL RESPONSES WILL BE STRICTLY CONFIDENTIAL

1. What is your gender: ☐ Female ☐ Male
2. Please tell us which ethnic or racial group you most closely identify with:
☐ Black/African-American ☐ Asian ☐ White/Caucasian ☐ Other
3. Are you Hispanic or Latino? ☐ Yes ☐ No
4. What is your age?
☐ under 20 ☐ 20-24 years ☐ 25-34 years ☐ 35-44 years
☐ 45-54 years ☐ 55-64 years ☐ 65-74 years ☐ 75 or older
5. Please tell us about your annual household income:
☐ Less than \$15,000 ☐ \$15,000 to \$34,999 ☐ \$35,000 to \$49,999
☐ \$50,000 to \$74,999 ☐ \$75,000 to \$99,999 ☐ More than \$100,000
6. Please tell us about your education attainment level:
☐ Less than a high school diploma ☐ High School Diploma (GED) ☐ Some college
☐ College Graduate ☐ Post Graduate study ☐ Post graduate degree
7. How long have you lived in Champaign County?
☐ 0-4 years ☐ 5-9 years ☐ 10-19 years ☐ 20+ years ☐ Life-long resident
8. Where do you live? ☐ Champaign ☐ Urbana ☐ Rantoul ☐ Village of _____
☐ Unincorporated _____ Township
9. Are you a land owner in Champaign County? ☐ Yes ☐ No
10. What is your principal occupation? _____
11. How did you learn about the Land Resource Management Plan Workshop?
☐ Newspaper ad ☐ Newspaper article ☐ Sign along road
☐ Flyer ☐ County Board member ☐ Word of mouth
☐ Website ☐ Other _____

Feel free to add any comments about the Land Resource Management Plan Workshop on the reverse side of this page. Thank you!

Champaign County Land Resource Management Plan - Public Preference Survey **Exit Questionnaire**

Please use this space to write any comments about the Public Preference Survey.

If comments are related to survey questions, please identify those with the survey question number.



LRMP Public Workshop Exercises

Part 1: Preference Surveys

45 minutes

After a brief presentation, please fill out your individual preference survey. Feel free to discuss items with people at your table, but we would like to receive one survey from each participant.

Part 2: Future Land Use Map Inputs

45 minutes total

As a group, please complete the following exercises by drawing on the basemap provided at your table and by taking notes on separate paper. Please limit your ideas to unincorporated areas of the County. Consensus is not necessary. All ideas should be considered and noted on the packet provided.

Exercise 1: 5 minutes

GREEN MARKER to draw polygons with hash marks



1A: Identify areas of environmental and ecological value that are important to preserve regardless of ownership or expense. Describe them if it is not clear what the unique feature is for the areas.

1B: Identify areas that you believe to be scenic landscapes that you feel should be preserved purely for their visual qualities. With a thick green line, also draw approximate locations where you would like to see trails connecting natural areas.

Exercise 2: 5 minutes

BLACK MARKER to draw dots with numbers

• 4

Identify agriculture related businesses and infrastructure (i.e. grain elevators, implement stores). On a separate sheet of paper, write down the name of the establishment and the number with which you have identified it on the map

Exercise 3: 5 minutes

BLUE MARKER to draw THICK lines



Identify potential transportation corridors that:

- Provide access within 3 miles to at least two major roadways, railroad lines, or airports AND
- You believe would be suitable for commercial, office, or industrial development

Exercise 4: 15 minutes

RED MARKER to draw polygons

An industrial firm wants to locate in Champaign County. Assume for the purposes of this exercise that:

- They can develop anywhere
- They need access to rail and highways
- Water supply and available infrastructure are not factors in selecting potential sites
- Proximity to the larger municipalities is not necessary

4A. Where do you recommend they locate? Identify as many areas as possible based on the assumptions with a simple red polygon.



4B. What areas should be protected from this type of development? Identify as many areas as possible based on the assumptions using a red polygon with an X through it.



4C. What criteria did you use to select locations? (Provide answers on the packet provided)

Exercise 5: 15 minutes

PURPLE MARKER to draw bold exclamation points for issues and arrows for forces



Please map and/or write down any issues (problems) or forces (strengths) you feel are relevant to land use in the County. This can be discussed as a group, but all individual ideas should be noted.

Part 3: Share Ideas and Wrap Up

15-30 minutes

A speaker from each table should be ready to share two issues and two forces from Exercise 5.

Public Comments Received for Draft Land Resource Management Plan

Excerpt from LRMP Project Staff Report to the Champaign County Environment and Land Use Committee (ELUC) dated February 18, 2010

On November 30, 2009, the draft Land Resource Management Plan (LRMP) was approved by ELUC so that it could be released for public review in January. The draft LRMP was available for public review and comment from January 11 through February 9, 2010. The document was available at the ten principal libraries in the County during the 30-day comment period, online at www.ccrpc.org, and at CCRPC and County Zoning offices. A Public Open House was held on January 26, 2010, which was attended by about 55 residents.

Public Involvement Efforts

- Public involvement opportunities were advertised via retail ads in *The News Gazette* on January 10th and 20th and in the local area newspapers in their legal sections the week prior to the open house.
- Press releases were sent to all media outlets on January 8th and 20th.
- *The News Gazette* wrote an article about the plan for its January 21st edition and followed up with an article about the plan and open house on January 28th.
- Postcards advertising the public review period and Open House were sent to all residents who attended the April 2008 workshop (about 130 residents).
- Postcards were distributed to all members of the Champaign County Board of Realtors.
- 400 postcards were distributed at the Farm Bureau Annual Meeting.
- Postcards were distributed to all Champaign County Board members and Regional Planning Commission Board members.
- CDs and paper copies were offered in all advertisements and on the CCRPC website. Approximately 20 CDs were distributed upon request.
- CCRPC staff presented at the Urbana Plan Commission and full City Council on January 21st and 25th, respectively. Opportunity for public comment was provided.
- CCRPC staff presented at the Champaign Plan Commission on February 3rd and is scheduled to present at the full City Council on February 23rd, with opportunity for public comment provided at both meetings.
- A video with information on the Plan and footage from the Open House has aired on local access channels numerous times since February 4th.
- CCRPC staff took several phone calls, answering questions and accepting comments.

Comments

Comments were received from 21 residents and agencies. Staff has enclosed the comments and two other groupings of the comments: Summary Topics and Paraphrased Comments. Summary Topics are very short ideas culled from the public comments. Paraphrased comments are slightly shortened versions of the comments received. In both groupings, staff made every effort to provide a concise summary while maintaining the integrity of the comments. I recommend that the full comments

be read by the Board to get a complete understanding of the context and content of the comments.

Staff also recommends that the Committee review all comments received during the public comment period and determine whether other changes should be made.

Attachments: Summary Topics and Paraphrased Comments

Attachment: LRMP Summary Topics and Paraphrased Comments

The following sections titled “Summary Topics” are pared down general concepts inferred by staff of the public comments received. A number in parentheses after a comment signifies the number of people who made the same comment.

Summary Topics: Existing Conditions

- More open space needed
- Correct and focus more on abandoned railroad easements
- More data needed on our biological resources
- Include prairie remnants and restorations in Natural Resources section
- Add missing remnants and restorations

Summary Topics: Goals & Objectives

- Include quality of life with prosperity in Goal 3
- Include Champaign County Economic Development Policy as appendix
- Need to consider non-row crop agriculture in use of best prime farmland, which usually occurs on smaller lots
- Clarify specifications for Policies 4.1.2 and 4.1.4
- 1:40 will create unsellable and unbuildable lots
- Clarify difference between Policies 4.1.6 and 4.3.2
- Define term “very well suited”
- Locally grown and marketed foods are a plus and could use more emphasis **(2)**
- Need to define landscape character and implement a landscape character assessment
- Mahomet Aquifer protection is important
- Soil protection is important
- Developers should have requirements to make them good stewards of natural areas
- Agricultural runoff and tile drainage should be further analyzed as they relate to stream impairment
- Need to clarify what happens to existing lawfully conveyed lots
- Buffers can be areas of natural restoration or public open space
- Need to define what constitutes a natural area
- Need to conduct an inventory of natural areas
- Include green infrastructure and minimization of impervious surfaces to help with stormwater and habitat management in the County **(2)**
- Include from the LUGPs the statement concerning preservation of agricultural belts surrounding urban areas to retain the agricultural nature of the County
- Discourage strip development patterns
- Promote well-defined urban edges
- Include recommendations on fiscal impact analysis and development fees
- The County should promote household hazardous waste collection through a policy
- Railroads and bicycles should be promoted more
- Hold a public hearing when a manure lagoon is proposed under the Livestock Management Facilities Act
- Protect both well users and well water quality in Policy 8.1.1
- Promote groundwater recharge
- Ensure that County is not assuming ownership of mineral resources it does not have when using policies under Objective 8.3
- Add to policy 8.4.6: *...and encourages the adoption of maintenance practices that will protect downstream drainage patterns and minimize impacts on adjacent and downstream properties*

Summary Topics: Goals & Objectives (continued)

- Provide a 35 foot vegetative buffer around all streams **(2)**
- The County should prevent unprotected wetlands from being filled in **(2)**
- Remove “when feasible” from policy 8.5.5 **(2)**
- The way 8.6 is written, all unincorporated Champaign County is included; is this intended?
- Policy 8.6.2 should focus on the resource impacted rather than the type of development that is impacting the resource
- Need a more proactive policy about aquifer protection (under Objective 8.1)
- The County should prevent riparian areas from destruction
- The County should promote drainage practices that exclude denuding streambanks and that protect downstream drainage
- The County should seek and purchase a large piece of land to restore prairie and wetland habitat that can be used as a migratory stopover
- The County should encourage preservation and restoration rather than mitigation
- The County should seek to establish a network of natural areas and parks that are connected by riparian habitat
- The County should promote energy efficiency in both new construction and existing structures (Objective 9.2)
- The County should promote use and purchase of products made of recycled content
- The County should only promote those renewable resources that are sustainable and not a significant threat to the environment
- How will the information from Policy 10.1.1 be used to add objectivity to the RRO factor effects on wetlands, historic or archeological sites, natural or scenic areas or wildlife habitat?

Summary Topics: Future Land Use Map

- Map correction requested by City of Champaign
- Commercial/industrial area at Pesotum interchange doesn’t make sense
- Add 100 acre planned restoration area west of Parkland College

Summary Topics: Implementation Plan

- Promote stronger state laws on aquifer protection and access

Summary Topics: General document and planning process

- LRMP is hard to read
- LRMP is difficult to download from internet
- LRMP is hard to understand
- More time needed for public review
- More meetings to review are requested, including at township level
- Requests postponement of vote to allow sufficient time to review and clarify
- More meetings to review are requested, including at township level
- Requests postponement of vote to allow sufficient time to review and clarify
- Liked Open House presentation and setup
- Asks that the planning group lobby against expansion of I-74 between Mahomet and Champaign
- Goals, objectives and policies are confusing **(2)**
- Future Land Use section is confusing
- Help sought protecting remaining woodlands along Kaskaskia River
- Regional perspective needs strengthening in LRMP about interconnections, transportation modes, and recreational access
- Private property rights opposition to LRMP **(3)**
- Good management document and guide for decision makers in the future

Summary Topics: General document and planning process (continued)

- In favor of the LRMP generally **(5)**
- Favor the LRMP policies as they relate to Olympian Drive proposed project **(2)**
- Need more emphasis on significance of railroads to the future
- Need more emphasis on sustainability education
- Approves of conservation ethics in LRMP
- Need to strengthen policies on wildlife
- Recommend updating LRMP with most recent Mahomet Aquifer Consortium data
- Definition of *suited overall* needs to be corrected
- Requests suitability/unsuitability factors be added into definitions
- Requests clear outline of development standards for best prime farmland
- Requests definition of natural area
- Protect productive farm ground from development

The following sections titled “Paraphrased Comments” are slightly shortened versions of the public comments received. Staff made every attempt to maintain the integrity of the comments when creating this list.

Paraphrased Comments: Existing Conditions

- Chapter 8: I would contend that Champaign does not have enough open space for its residents. Additionally, the acreages of parks and "wild" green space is woefully lacking to restore and maintain healthy ecosystems. –James Ellis
- Chapter 9: Figure 9-5 (Railroad Crossings by Type): the railroad tracks between Allerton through Broadlands and Villa Grove have been abandoned. –Dave Monk
- Chapter 9: The abandoned railroad easements are of interest and should be mapped if possible. –Dave Monk
- Chapter 10: We need more information on the current state of our biological resources (more than just rare species). I was surprised not to find any mention that Champaign County was once almost completely grassland-the native grassland called prairie. I'm happy that you referenced this in Chapter 12, but it should be included in the Chapter 10 as well. – James Ellis
- Chapter 10: Prairie remnants and restorations should have also been included in the natural resources section. One site open to the public not mentioned is Shortline Railroad Prairie owned by Grand Prairie Friends. –James Ellis
- Chapter 10: I did find some erroneous information in Chapter 10. The Illinois Natural Areas Inventory (INAI) conducted in the 1970s was NOT part of the Critical Trends Assessment Program (CTAP). Also, there are two nature preserves in Champaign County: Tomlinson Pioneer Cemetery and Barnhart Prairie. –James Ellis

Paraphrased Comments: Goals, Objectives and Policies

Goal 3

- Prosperity is more inclusive than this goal and objectives imply. An earlier version included quality of life issues. Social and environmental elements should be referenced. –Hal Barnhart
- If Champaign County has an Economic Development Policy, could it be included in the Appendices? –Hal Barnhart

Goal 4

- Objective 4.1: There appears to be no recognition that mega farm row crop agriculture may not be the best use of all best farm land in Champaign County. –Beverly Seyler

Paraphrased Comments: Goals, Objectives and Policies (continued)

- Objective 4.1: A reference concerning the County's desire to preserve agricultural land in large contiguous blocks could add emphasis to this objective. –Hal Barnhart
- Policies 4.1.2 and 4.1.4: These two sections include a guarantee with only the conditions specified. The specifications, however, differ in each item. The difference may become problematic. I may add that even the definition of by right development in the LRMP does not preclude claims by individuals that their "guarantee" has been violated. –Norm Stenzel
- Policy 4.1.4: Transportation requirements are not mentioned anywhere else in this document for by right development. Is there a plan to deny by right single residence development because rural areas do not and will not have public transportation? –Beverly Seyler
- Policy 4.1.5: Requiring 40 acre tracts for by right single residence development will exclude all but the very wealthy from living in rural areas. The cost of an acre of land is commonly in excess of \$6,000. Therefore the cost of a rural building lot will be at minimum \$250,000; building costs will put the cost of a rural residence in excess of \$450,000. This is out of the range of most middle class families in Champaign County. –Beverly Seyler
- Potential exists for confusion between Policy 4.1.6 and 4.3.2. The former relates to residential development and the latter to other development, however that distinction is not clear. –Hal Barnhart
- Policy 4.3.5 introduces the term very well suited. This term is not defined. –Hal Barnhart
- Objective 4.8: I applaud inclusion of Objective 4.8 encouraging locally grown and marketed foods. –James Ellis
- Objective 4.8: This objective is weak. Reinstatement of the advisory panel would help. –Hal Barnhart
- Objective 4.9: Adding a Landscape Character Assessment to the discretionary review process should precede the design guidelines mentioned in the Implementation Strategy. –Hal Barnhart
- Objective 4.9: It is not clear what landscape character in this objective means. –Beverly Seyler
- With regard to Goal 4, we support the statement that "commercial agriculture is the highest and best use" for agricultural lands. We wish that the statement regarding "acknowledge locally grown foods" was stronger. The county should create a special "blue ribbon panel" to explore ways to plan for creating a local food system for Champaign County. - Leslie Cooperband and Wes Jarrell
- When evaluating new development in agricultural areas, the County should prioritize projects that maintain the integrity of the soil, allow recharge of the Mahomet aquifer, and protect natural landscapes. Developers should be required or provided incentives to be good stewards. In particular, new development should:
 - minimize the amount of paved and otherwise impervious surfaces, so that flooding problems are not created and groundwater recharge can occur
 - protect or create wildlife habitat and riparian corridors
 - utilize cluster development design with common areas that provide recreational use and on-site stormwater management. –Richard Bishop, Chair, Sierra Club Prairie Group
- The County should more rigorously address agricultural runoff and tile drainage as a cause of stream impairment. The County should work with the University of Illinois and the Champaign County Soil and Water Conservation District to educate farmers about the importance of using best management practices that reduce water pollution. –Richard Bishop, Chair, Sierra Club Prairie Group
- Need to clarify in simple terms what guarantee do the landowners have that any pre-existing and lawfully conveyed lots (platted and registered) will be honored by the Champaign County Board and the ZBA. –Vincent Hock

Paraphrased Comments: Goals, Objectives and Policies (continued)

Goal 5

- Policy 5.1.6: I see Policy 5.1.6 (buffer between agriculture and urban development) as an opportunity for restoration of natural areas or public open space. –James Ellis
- Objective 5.2: To fully realize this objective, the County will need to define what constitutes a natural area and conduct an inventory of natural areas. –James Ellis
- Objective 5.2: Add *Policy 5.2.4: The County will encourage the use of green infrastructure for stormwater management, and the minimization of impervious surfaces on developed and redeveloped properties.* Implementation of this policy would include prohibiting the destruction of riparian habitat and limiting development in floodplains to recreational uses. This new policy would enhance groundwater recharge, preserve natural resources, and promote innovative and aesthetic forms of stormwater management. –Stacy James, Water Research Scientist, Prairie Rivers Network
- The City supports LRMP Goal 2.0, Governmental Coordination and the overall intent of Goal 5, Urban Land Use which encourages urban development to be compact and contiguous to existing urban areas. This is consistent with the goals, objectives and policies of the Champaign Comprehensive Plan. However, the City intends to continue to exercise the full allowance of existing state laws, and the findings of the Chatham decision, regarding municipal jurisdiction in the ETJ where applicable. –Rob Kowalski, Champaign Planning Department
- Add a policy that encourages the use of green infrastructure to manage stormwater, and puts limits on the amount of impervious surface a property or watershed can contain. The County should support the adoption of stormwater utilities. –Richard Bishop, Chair, Sierra Club Prairie Group
- Include from the LUGPs the statement concerning preservation of agricultural belts surrounding urban areas to retain the agricultural nature of the County, and the individual character of existing communities. This statement is also currently in the Zoning Ord. under Section 2: Purpose. –Hal Barnhart
- Include LUGP 3.7 with reference to discouraging strip commercial patterns in deference to nodal patterns. –Hal Barnhart
- Add promotion of the best development practice of establishing well defined urban edges. –Hal Barnhart
- Include recommendations for fiscal impact analyses and impact fees. –Hal Barnhart

Goal 6

- Objective 6.3: The City of Champaign supports that LRMP Objective 6.3 which would adopt a building code for non-agricultural construction in the County. The City further recommends amending the language of this objective to read "national consensus building code". –Rob Kowalski, Champaign Planning Department
- Add *Policy 6.4.1: The County will conduct public outreach to inform residents how to safely dispose of household hazardous waste and prescription drugs, and will periodically conduct household hazardous waste collection days in cooperation with the Illinois Environmental Protection Agency.* Implementation of this policy could occur before updating the Champaign County Waste Management Plan. –Stacy James, Water Research Scientist, Prairie Rivers Network

Goal 7

- The County should support increased use of railroads for transportation of goods and people, and prioritize the use of rail over highway and air transport. –Richard Bishop, Chair, Sierra Club Prairie Group
- The County should support bicycling by providing bike lanes on popular routes where sidewalks are not available. –Richard Bishop, Chair, Sierra Club Prairie Group

Paraphrased Comments: Goals, Objectives and Policies (continued)

Goal 8

- Objective 8.1: Add *Policy 8.1.11: The County will automatically hold a public hearing when construction of a new or expanded manure lagoon is proposed under the Livestock Management Facilities Act.* –Stacy James, Water Research Scientist, Prairie Rivers Network
- Policy 8.1.1: Add to Policy 8.1.1: ... existing well user *or the water quality of any existing well.* –Stacy James, Water Research Scientist, Prairie Rivers Network
- Policy 8.1.10: Add *Policy 8.1.10: The County will promote groundwater recharge by encouraging the use of green infrastructure and on-site stormwater infiltration, prohibiting the destruction of wetlands and riparian areas, and limiting the size of parking lots, streets, and other impervious surfaces.* –Stacy James, Water Research Scientist, Prairie Rivers Network
- Objective 8.3: The policies listed below appear to usurp customary mineral rights ownership that is usually presumed with surface ownership unless specifically severed and sold or inherited by a third party. Is the County assuming ownership of mineral rights by not allowing expansion or establishment of underground minerals including underground water, natural gas, oil, coal, and pore space in underground reservoirs? Isn't the county assuming an ownership role that it does not possess with the policies stated below. If for example oil or natural gas is discovered in the unincorporated areas of Champaign County, it is my understanding that the owners of the mineral rights have a legal right to access and extract these minerals. –Beverly Seyler
- Policy 8.4.6: Add to Policy 8.4.6: ... maintenance of drainage, *and encourages the adoption of maintenance practices that will protect downstream drainage patterns and minimize impacts on adjacent and downstream properties that are outside of a district's boundaries.* – Stacy James, Water Research Scientist, Prairie Rivers Network
- Policy 8.5.2: Add to Policy 8.5.2: *All streams shall be protected from new development by a 35 foot vegetative buffer.* –Stacy James, Water Research Scientist, Prairie Rivers Network
- Policy 8.5.2: The County should require that all streams be protected by a vegetated buffer at least 35 feet wide. –Richard Bishop, Chair, Sierra Club Prairie Group
- Policy 8.5.3: Add to Policy 8.5.3: *The County shall discourage the filling of isolated wetlands not protected by the federal Clean Water Act.* –Stacy James, Water Research Scientist, Prairie Rivers Network
- Policy 8.5.5: Revise Policy 8.5.5: strike "when feasible." –Stacy James, Water Research Scientist, Prairie Rivers Network
- Policy 8.5.5: When would it not be feasible to support healthy aquatic ecosystems? –Hal Barnhart
- Objective 8.6: This statement in fact includes all of unincorporated Champaign County. Areas that represent the pre-settlement environment are extremely limited, however areas that provide habitat for native and game species include all of Champaign County. –Beverly Seyler
- Objective 8.6: states that we should "...avoid loss or degradation of areas representative of the presettlement environment and other areas that provide habitat for native and game species." We have very few areas left that represent the presettlement landscape. Of course these areas are important to protect, but the vision needs to be wider. –James Ellis
- Policy 8.6.2: What native and game species does this statement include? There is no area in unincorporated Champaign County that doesn't support rabbits, squirrels, ground squirrels, raccoons, opossums, and/or native birds. So this statement applies to all of unincorporated Champaign County. –Beverly Seyler
- Policy 8.6.2b unfortunately bases protection on type of development (discretionary vs. by-right) rather than the resource impacted. This is another reason to keep the by right density low as per the 1/40 provision. –Hal Barnhart

Paraphrased Comments: Goals, Objectives and Policies (continued)

- Objective 8.9: I encourage the creation of a Natural Resources Assessment System as described in Objective 8.9, and I encourage the County to call on natural resource, GIS, and other professionals within the University of Illinois, the Illinois Natural History Survey, and the Illinois Department of Natural Resources to develop this system. –James Ellis
- There should be a more proactive policy regarding aquifer protection and limiting the ability to access the aquifer –Dannie Otto, City of Urbana Plan Commission
- The County should prohibit the destruction of wetlands and riparian areas. –Richard Bishop, Chair, Sierra Club Prairie Group
- The County should encourage the adoption of drainage maintenance practices that protect downstream drainage and do not involve the periodic denuding of streambanks. The County should require maintenance that establishes native plant species and small floodplains that cannot be farmed (e.g., the two-stage ditch design). –Richard Bishop, Chair, Sierra Club Prairie Group
- The County should more aggressively seek the purchase and development of a park that should restore the prairie and wetland habitat that once classified east-central Illinois, and be large enough to be used as a migratory stopover and breeding area. –Richard Bishop, Chair, Sierra Club Prairie Group
- The County should not encourage mitigation, because mitigation projects are often poorly designed and maintained. Instead, the County should require preservation and restoration. –Richard Bishop, Chair, Sierra Club Prairie Group
- The County should seek to establish a network of natural areas and parks that are connected by riparian habitat, so that wildlife can safely move and adapt to climate change. –Richard Bishop, Chair, Sierra Club Prairie Group

Goal 9

- The County should promote the retrofitting of existing structures to increase energy efficiency, not just new construction. –Richard Bishop, Chair, Sierra Club Prairie Group
- The County should promote the purchase of materials made from recycled products, and purchase recycled content products where possible. –Richard Bishop, Chair, Sierra Club Prairie Group
- The County should only promote those renewable resources that are sustainable and not a significant threat to the environment. –Richard Bishop, Chair, Sierra Club Prairie Group

Goal 10

- Policy 10.1.1 is weak. Identification of historic structures, places, and landscapes is important, but how will the information be used to add objectivity to the RRO factor *effects on wetlands, historic or archeological sites, natural or scenic areas or wildlife habitat*? –Hal Barnhart

Paraphrased Comments: Future Land Use Map

- The "Municipal Extraterritorial Jurisdiction without Sanitary Sewer" designation on the Land Use Management Areas map should except the area in southwest Champaign planned to be served by the southwest sanitary sewer expansion project. This area should be designated within the "Contiguous Urban Growth Area". –Rob Kowalski, Champaign Planning Department
- Designation of a large commercial/industrial area at the Pesotum interchange seems incongruous with best practices and other elements of the LRMP. –Hal Barnhart
- Recommends that the plan consider recommending the taking of an option on approximately 100 acres of land to west of Parkland College for possible expansion and for associated open space and landscape ambiance. –Dave Monk

Paraphrased Comments: Implementation Strategy

- Encourage the state legislature to update their laws regarding aquifer protection and limiting the ability to access aquifers –Dannie Otto, City of Urbana Plan Commission

Paraphrased Comments: General Comments on the Draft LRMP

- The current 500 page LRMP is not easy for the average person to read, download from the internet, or understand. The future land use section is complicated and not easy to understand. –Vincent Hock
- We need more time to review and discuss this document publicly. –Vincent Hock
- The LRMP goals, objectives and policies are written to confuse people on just what the current goals are, especially the policy sections 4.1.4 through 4.1.9. Are you in compliance with state law? –Vincent Hock
- We would like some way to protect the remaining woodlands along the Kaskaskia River from damage by snow mobiles, all-terrain vehicles, and dirt bikes that is presently occurring on private property. –Greg Tempel
- The LRMP needs to be expanded to include information about regional interconnections regarding transportation modes and systems and also with regard to recreational access. – Dave Monk
- I am opposed to any land use plan that would result in a zoning restriction on what I or my neighbor does on his/her own property. –Doyle Luster
- This plan is good management and will serve to guide elected officials, business, and individuals going into the future. –James Ellis
- I'm not particularly surprised that so many of our rivers and streams are considered impaired by IEPA. This is where good land use planning, as proposed in this document, can work to protect and restore land along our streams and rivers to improve the health of these waterways. –James Ellis
- I really like that the purpose statement encourages protection of natural resources and the environment at the beginning of the Goals and Objectives section. I also heartily endorse the Goals, Objectives, and Policies as they have been written. I particularly think that Goal 4 (Agriculture), Goal 5 (Urban Land Use), and Goal 8 (Natural Resources) are particularly important. –James Ellis
- I am in favor of the LRMP. It speaks strongly for agriculture and the preservation of the land. I feel that it is not supportive of the CUUATS plan as it relates to Olympian drive. How many more industrial wastelands do we need? Let's let the farmers do what they do best, provide us with our food source and this plan supports that. –Janet Scharlau
- The future of railroading has not received a lot of attention in the Land Resource and Management Plan. –Dave Monk
- Sustainability education is lacking in this community. We need to encourage education and interdisciplinary studies. –Dave Monk
- We support the overall LRMP and specifically Goal 4 (Protect the Long Term Viability of Agriculture in Champaign County and its Land Resource Base), Goal 5 (Encourage Urban Development that is COMPACT and CONTIGUOUS to existing cities, villages and existing un-incorporated settlements), Goal 7 (Coordinate land use decisions in the unincorporated area with the existing and planned transportation infrastructure and services) and Goal 8 (Conserve and Enhance the County's landscape and Natural Resources and Ensure their Sustainable Use). - Leslie Cooperband and Wes Jarrell
- There appears to be no coordination between the goals and policies related to agriculture, natural resource preservation and sustainable use and the CUUATS LRTP 2035. The LRMP should promote agricultural production as the best use of agricultural lands and highlight areas of the LRTP where this is not emphasized. - Leslie Cooperband and Wes Jarrell
- The LRMP will provide a strong foundation for making land use and planning related decisions. –Rob Kowalski, Champaign Planning Department

Paraphrased Comments: General Comments on the Draft LRMP (continued)

- I support a majority of the plan. Everything that I have read in the plan favors preservation of farm ground for use in agriculture. I do not like the part shown under Future Land Use Map that shows our area (*Olympian Drive near north Lincoln Avenue*) as “Incorporated Area-Future” which means we would be in the City of Urbana. This area is about 1500 acres and that is far too much land to give up. –Harold Scharlau
- I strongly feel that many of the Goals, Objectives, and Policies severely impede on ones’ rights and could possibly open up Champaign County to huge lawsuits. –Concerned Citizen
- By zoning out development options the plan limits a property owner's ability to manage his land asset. –Mark Thompson
- The mere size of the Plan and number of goals provides much room for suspect. I do not support a plan devised by an appointed or self appointed panel to basically regulate land use, water use, utilities, drainage, forested and wetlands, transportation or private land near public land by a massive, multifaceted plan with so many goals and objectives that it is difficult to really determine how it will affect my right of usage down the road. –David McCoy
- Sierra Club applauds the conservation ethics in the Champaign County Land Resource Management Plan. However, the LRMP should be strengthened with policies that are more protective of wildlife and the land for their own right, and for the enjoyment and health of the County's residents. More consideration should be given to the impacts of climate change and strategies the County can pursue that will lessen these impacts. Therefore, the County should seek to obtain a significant parcel of several thousand acres managed for multiple use. –Richard Bishop, Chair, Sierra Club Prairie Group
- Members of the Board of Directors of the Mahomet Aquifer Consortium recommend that the Draft Land Resources Management Plan be strengthened by including the latest data and information from the June 2009 report and other sources. -Mel Pleines, Chair, Mahomet Aquifer Consortium
- The terms *suited overall* and *well-suited overall* are adapted from LURPs 1.5.1 and 1.5.2. As defined in the LRMP they have become even more confusing. Bullet point 4 of the LRMP definition of suited overall states that *necessary infrastructure is **not** in placeNot* should be removed. –Hal Barnhart
- I think the definitions should include an extensive listing of suitability/compatibility factors and criteria that informs the decision of whether or not a site is suitable or unsuitable and clearly outlines the required more stringent development standards on best prime farmland. –Hal Barnhart
- There is no definition of natural area, but needed. –Hal Barnhart
- I feel it is imperative that agricultural farm ground be maintained as productive farm ground and not covered over with concrete for roads or development. –Bill Ziegler

Paraphrased Comments: General Comments on the LRMP Planning Process

- There was only one public meeting held to discuss the current LRMP. There is a need for more public input. -Vincent Hock
- You have not asked for township meetings to discuss the impact of the current LRMP. This needs to be discussed at the township level. –Vincent Hock
- I request that the Champaign County Board, and especially the members from District 1, delay a vote on the adoption of the January 2010 LRMP until such time that sufficient clarification and public input can be accomplished. –Vincent Hock
- I am so impressed by the planning and the presentation prepared for the open house. It is clear that this plan takes seriously the wealth (natural and economic) that is our agricultural land. With this focus, I would beg that this planning group in whatever capacity it can act lobby against the expansion of I-74 to eight lanes between Mahomet and Champaign. –Theresa Michelson