
APPENDIX 2: PUBLIC PARTICIPATION EFFORTS

For Immediate Release

August 14, 2007
Monticello, Illinois

PIATT COUNTY COMPREHENSIVE PLAN UPDATE WILL PROVIDE BLUEPRINT FOR FUTURE GROWTH AND DEVELOPMENT

The Piatt County Board, Tuesday, approved a contract with the Champaign County Regional Planning Commission to prepare an update the County's Comprehensive Plan. This effort will include establishment of a Piatt County Regional Planning Commission to oversee the effort. It will be undertaken over the next 18 months at a total cost not to exceed \$104,714.

The Current Piatt County Comprehensive Plan was adopted in 1970 and no longer serves as a helpful guide to the County government in making land use and development decisions. The new plan will be used to guide decisions on zoning, subdivisions, infrastructure expenditures, economic development and other matters. It will enable the County Board to ensure that new streets, utilities and public services will be provided in a timely and efficient manner. The plan will give homeowners, landowners and prospective developers advance knowledge of the County government's intentions and policies. This will minimize future conflicts over land use and development and also assist in marketing sites in the County for economic development.

Planners will look forward 20 years with new population and economic growth projections. The effort will collect and analyze information on natural resources, the County economy, soils, land use, government jurisdiction, public services and facilities, utilities, parks and preserves and cultural resources. It will look at important trends in the County and identify goals and principles for altering negative trends and fostering positive ones. It will also include a future land use map for the unincorporated area of the County. A website will be created to make it easy to track work on the plan and provide input to the process.

The effort will be coordinated with municipalities that have already adopted plans that cover areas within their "extra-territorial jurisdiction". There are areas within one and one half miles of a municipality's corporate limits within which it has the power to adopt plans and regulate subdivisions.

The new Piatt County Regional Planning Commission will oversee the effort and provide a conduit for bringing the concerns of the general public into the planning process. The Commission is an eighteen-member body that includes representatives from all townships in the county. The County Engineer, the County Zoning Administrator, the Piatt County Extension Director and the Soil and Water Conservation District's Resource Conservationist also will participate as non-voting advisory members of the panel.

Professional assistance in developing the plan will be provided by the Champaign County Regional Planning Commission through a technical services contract. The Urbana based organization already provides technical assistance to Piatt County's Geographic Information System and staffs the East Central Illinois Economic Development District of which the County is a member. The project will be managed by the CCRPC's Community Development Program Manager, Susan Chavarria.

Work on the project will begin in September and is expected to be completed by April, 2009.

For more information contact: Susan Chavarria
328-3313
schavarria@ccrpc.org

Media Advisory

For Immediate Release: July 21, 2008

Contact:

Susan Chavarria, CCRPC Regional Planning Manager
schavarr@ccrpc.org
217-328-3313

WHAT: County residents are invited to attend a public workshop to share their ideas about the future of Piatt County

WHEN: 6:00 – 8:30 PM
Tuesday, July 29, 2008

WHERE: Monticello Community Building Ballroom

Monticello, IL — COUNTY RESIDENTS INVITED TO SHARE IDEAS ABOUT PIATT COUNTY'S FUTURE

The Champaign County Regional Plan Commission (CCRPC) has been contracted to develop a Comprehensive Plan for Piatt County. The Comprehensive Plan includes all physical area in the County except the City of Monticello, which has its own Master Plan that was adopted in 1998. Current work on the plan involves creating goals, objectives, and a vision for how Piatt County should function in terms of land use, transportation, infrastructure, and community services.

CCRPC will hold a public workshop so that Piatt County residents can provide their ideas about community services, strengths and weaknesses as well as land use in the County. The workshop is scheduled for Tuesday, July 29, 2008 at the Monticello Community Building Ballroom, 102 East Livingston Street in Monticello. All County residents are encouraged to attend the workshop.

About the Comprehensive Plan Project

The 18-month process of updating Piatt County's Comprehensive Plan began in September 2007 with the formation of the Piatt County Regional Planning Commission (PCRPC), a 16 member board whose purpose is to guide the planning process. To date, the PCRPC Board has overseen the preparation of the *Piatt County Existing Conditions Report*, a baseline reference regarding land use, transportation, infrastructure, and natural resources. The document, as approved by the Board on July 1, 2008, will be available on the Piatt County Regional Planning Commission website, www.piattrpc.org, by mid-July.

Upcoming stages of the planning process include developing proposed future conditions and an implementation plan that outlines specific tasks, responsible parties, and potential funding sources.

The Plan will be used by the County Board, its committees, the Zoning Board of Appeals and County staff. The development of the Comprehensive Plan is intended to help shape a shared understanding of issues and will provide:

- a baseline of information regarding existing conditions and trends in the County;
- a policy framework for making specific decisions related to land use, transportation, infrastructure, services, and natural resources in the County;
- advance notice to landowners and developers regarding the County's expectations and policies regarding land use and development; and
- a guide for how to implement the needs and desires of Piatt County residents as they will be reflected in the plan.

PUBLIC WORKSHOP

PIATT COUNTY COMPREHENSIVE PLAN

*The Piatt County Board is updating the 1970 Piatt County Comprehensive Plan.
Please join us to share your ideas about the future of Piatt County!
Rural area land use, transportation, community services, and other topics
will be discussed during this structured workshop.*

**Tuesday, July 29, 2008
6:00 - 8:30 PM
Monticello Community Building Ballroom
102 East Livingston Street, Monticello**

For more information or to arrange special accommodations,
please contact Andrew Levy, Project Planner at 328-3313.

PUBLIC WORKSHOP

PIATT COUNTY COMPREHENSIVE PLAN

The Piatt County Board is updating the 1970 Piatt County Comprehensive Plan. Please join us to share your ideas about the future of Piatt County!

Rural area land use, transportation, community services, and other topics will be discussed during this structured workshop.

Tuesday, July 29, 2008

6:00 - 8:30 PM

**Monticello Community Building Ballroom
102 East Livingston Street, Monticello**

For more information or to arrange special accommodations,
please contact Andrew Levy, CCRPC Planner, at 328-3313.

Please view the Existing Conditions Report posted at www.piattrpc.org

*The Piatt County Board contracted with the
Champaign County Regional Planning Commission
to update the Comprehensive Plan.*



Piatt County Comprehensive Plan

For more information on the project, documents, meetings,
and how to stay involved, check out the project website:

www.piattrpc.org

Contact us!

Susan Chavarria
schavarr@ccrpc.org

Andrew Levy
alevy@ccrpc.org

Champaign County Regional Planning Commission
1776 East Washington Street, Urbana IL 61802
Phone: (217) 328-3313 Fax: (217) 328-2426

Public Workshop Exercises

Piatt County Comprehensive Plan Update

Tuesday July 29, 2008

S.W.O.T Analysis

SWOT is a planning tool that helps identify positives and negatives both inside and outside the community. The intended result of a SWOT exercise is a comprehensive picture of the major issues currently affecting the community. These ideas will be analyzed and transformed into strategies that use strengths to take advantage of opportunities, and minimize weaknesses by avoiding threats.

Definitions:

Strength - positive influences that originate within the county. (good agricultural land)

Weakness - negative influences that originate within the county. (conflict between residential and ag. land)

Oppportunity - influence from outside the county that may result in a positive impact. (ADM buying crops)

Threat - influence from outside the county that may result in a negative impact. (demand for rural housing)

Themes:

- Housing
- Economy
- Agriculture
- Parks and Recreation
- Natural Areas
- Environmental Stewardship
- Employment
- Infrastructure (sanitary sewer, water, internet, roads)
- Public services (ambulance, fire, schools, hospitals, etc.)
- Transportation



Public Workshop Exercises

Piatt County Comprehensive Plan Update

Tuesday July 29, 2008

Rural Character

Identifying specific elements of the character and landscape in Piatt County provides decision makers with a goal of keeping desirable characteristics in the county. These characteristics could range from the visual qualities of rolling hills to quality of water to having a library in each village. Identifying desirable rural development allows the creation of a vision that will have achievable goals.

1. What effect has Rural Development had on lifestyles in rural Piatt County? (Please circle one)

- Positive
- No Effect
- Negative

2. How have the following rural area qualities been affected?
(circle 'P' for positive, 'n' for negative, 'NE' for no effect)

• Drinking Water	P	N	NE
• Lake Water (recreation)	P	N	NE
• Rivers	P	N	NE
• Wildlife habitat	P	N	NE
• Open space	P	N	NE
• Fishing/Hunting	P	N	NE
• Farming	P	N	NE
• Appreciating Night Sky	P	N	NE
• Hearing Nature	P	N	NE
• Community Values	P	N	NE
• Crime	P	N	NE
• Quality of Schools	P	N	NE
• Job Opportunities	P	N	NE
• Transportation	P	N	NE
• Road maintenance	P	N	NE
• High quality housing	P	N	NE
• Affordable housing	P	N	NE
• Scenic Views	P	N	NE

Definitions

"Rural character" refers to the way land is used and the activities that take place in unincorporated areas.

"Rural development" refers to development outside incorporated areas. Rural development can consist of a variety of uses and residential densities, including clustered residential development.

"Conserve" refers to a type of management of landscapes that maintains productivity and use for future generations.

3. Write a phrase that you think defines 'traditional rural value'.



Public Workshop Exercises

Piatt County Comprehensive Plan Update

Tuesday July 29, 2008

4. Where do you most often find the strongest sense of community? (Please circle one)

- | | |
|---------------------------|-------------------|
| Neighborhood | Church |
| Children's Activities | Interest Groups |
| Extended Families | Recreation/Sports |
| Political Activist Groups | Town meetings |
| Other _____ | |

5. Agriculture is an important part of the Piatt County economy. (Please circle one)

- Yes, agree
- No, disagree
- No opinion

6. Should Piatt County conserve agricultural land use? (Please circle one)

- Yes, agree
- No, disagree
- No opinion

7. Natural area corridors are important for recreation as well as flood control, pollution control, and climate regulation. (Please circle one)

- Yes, agree
- No, disagree
- No opinion

8. What type of residential growth is most desirable for rural Piatt County (subject to minimum lot size and onsite sanitary sewer restrictions)? (Circle all that apply)

- Current development types
- Encouraged as subdivision development
- Encouraged only on land unsuitable for farmland
- Single family homes on lots smaller than 5 acres
- Single family homes on lots larger than 5 acres
- Lots that are spread far apart
- Lots that are clustered together to maximize efficiency
- Other (please list)



Public Workshop Exercises

Piatt County Comprehensive Plan Update

Tuesday July 29, 2008

9. Should Piatt County conserve forested and prairie areas? (Please circle one)

- Yes, agree
- No, disagree
- No opinion

10. Should Piatt County conserve the rural character of the County? (Please circle one)

- Yes, agree
- No, disagree
- No opinion

11. In Piatt County, do you favor attracting... (Circle all that apply)

- More heavy manufacturing
- More light industry
- More Agricultural Industry
- None of the above

12. Do you feel that you are adequately informed about decisions made by Piatt County Government?

- Yes
- No

13. What type of communication would help inform you about issues addressed by Piatt County Government? (circle one)

Newspaper

Mailed Newsletter

Email

Radio spots

Website postings

Other: _____



Public Workshop Exercises

Piatt County Comprehensive Plan Update

Tuesday July 29, 2008

Mapping Exercises

1. Identify areas of environmental and ecological value that are important to preserve regardless of ownership or expense. Describe them if it is not clear what the unique feature is for the areas.

A. Mark these by drawing a green boundary around the area and apply diagonal hash marks.



2. Identify areas that you believe to be scenic landscapes that you feel should be preserved purely for their visual qualities.

A. Draw a thick green arrow, from view points to the prominent feature in view (rolling hill, aesthetic barn, etc.).



B. Also draw a line for approximate locations of where you would like to see walking or biking trails or other activity centers to enhance active lifestyles in rural areas.



3. An industrial firm wants to locate in Piatt County. Assume for the purposes of this exercise that:

- They can develop anywhere in the County
- They need access to rail and/or highways
- Water supply and available infrastructure are not factors in selecting potential sites

A. Where do you recommend they locate? Identify as many areas as possible based on the assumptions with a simple red polygon and provide your reasons on the attached comment sheet.



B. In what areas should this type of development be restricted? Identify as many areas as possible based on the assumptions using a red polygon with an X through it and provide your reasons on the attached comment sheet.



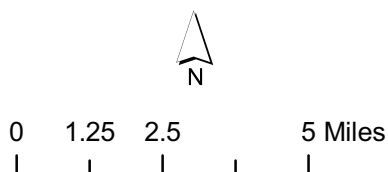
Mapping Exercise Explanations and Comments



Existing Land Use

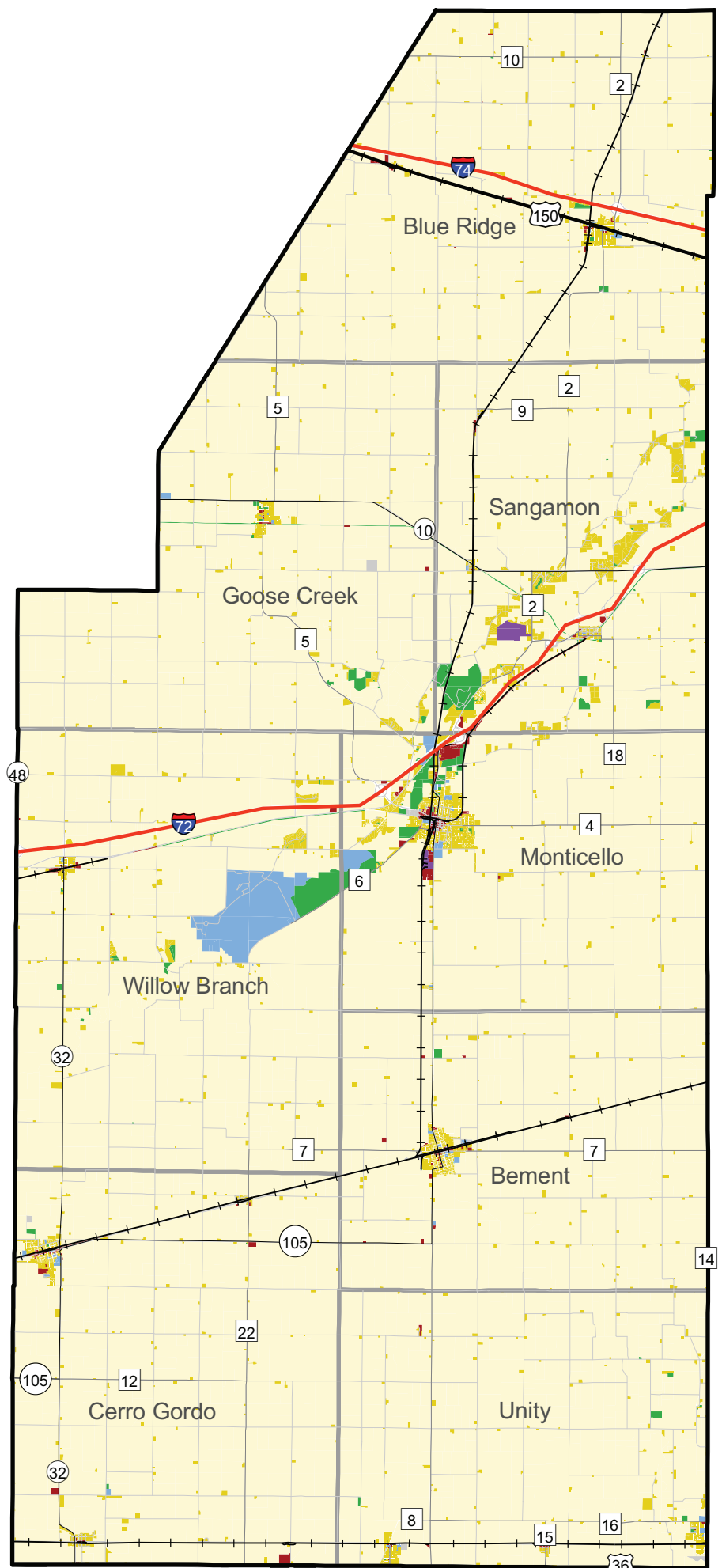
Piatt County

Legend



Production Date:
May 2008







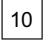



Sources:
Piatt County Assessor
CCGIS
CCRPC

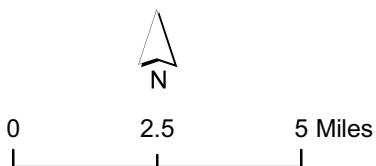


Land Cover

Piatt County, Illinois

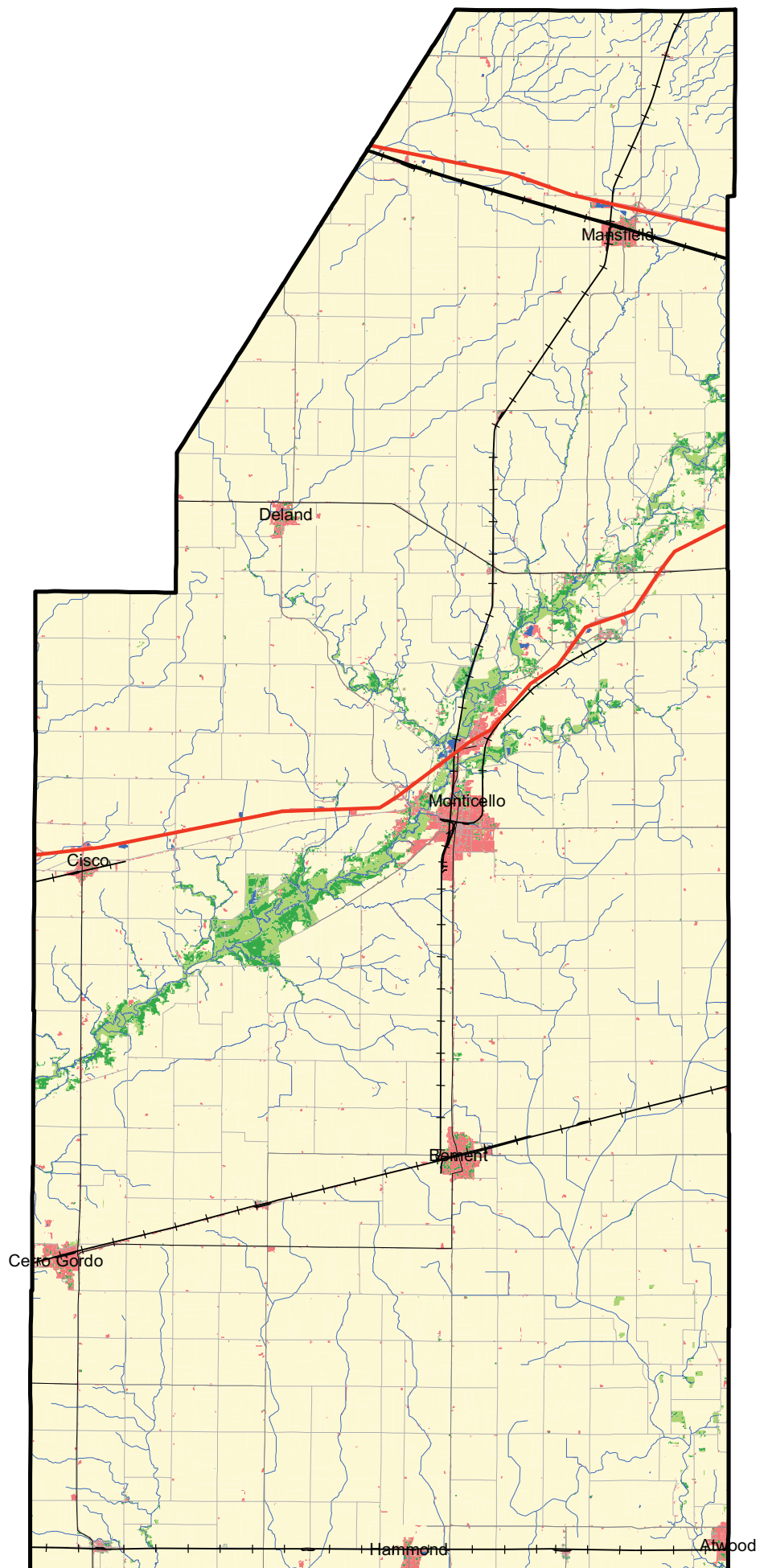
Legend

-  County Boundary
-  Agriculture
-  Forested
-  Urban/Developed
-  Prairie/Wetland
-  Water
-  County Hwy
-  State Hwy
-  U.S. Hwy
-  Interstate



Production Date:
May, 2008

Source:
Illinois Department of Agriculture

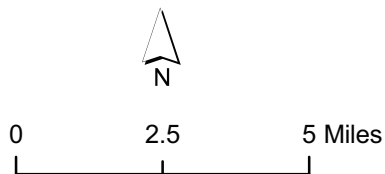


Approximate Building Location of Permits for New Residential Construction 1999 to 2006

Piatt County, Illinois

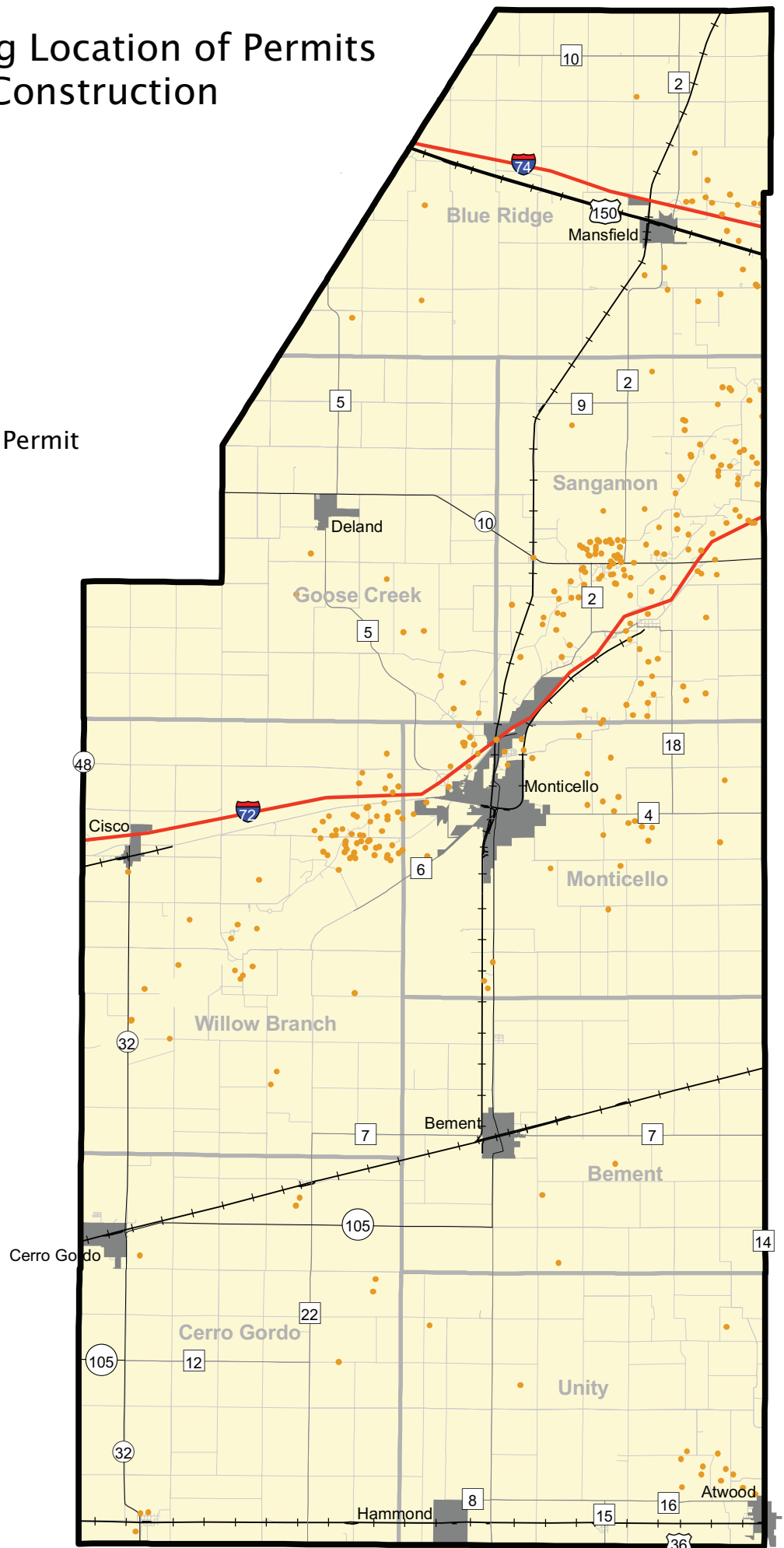
Legend

- New Residential Building Permit
- +— Railroads
- Municipal Boundary
- Civil Township
- 10 County Hwy
- 48 State Hwy
- 150 U.S. Hwy
- 74 Interstate



Production Date:
November, 2007



Sources:
Piatt County Tax Assessor
CCGIS
IDOT



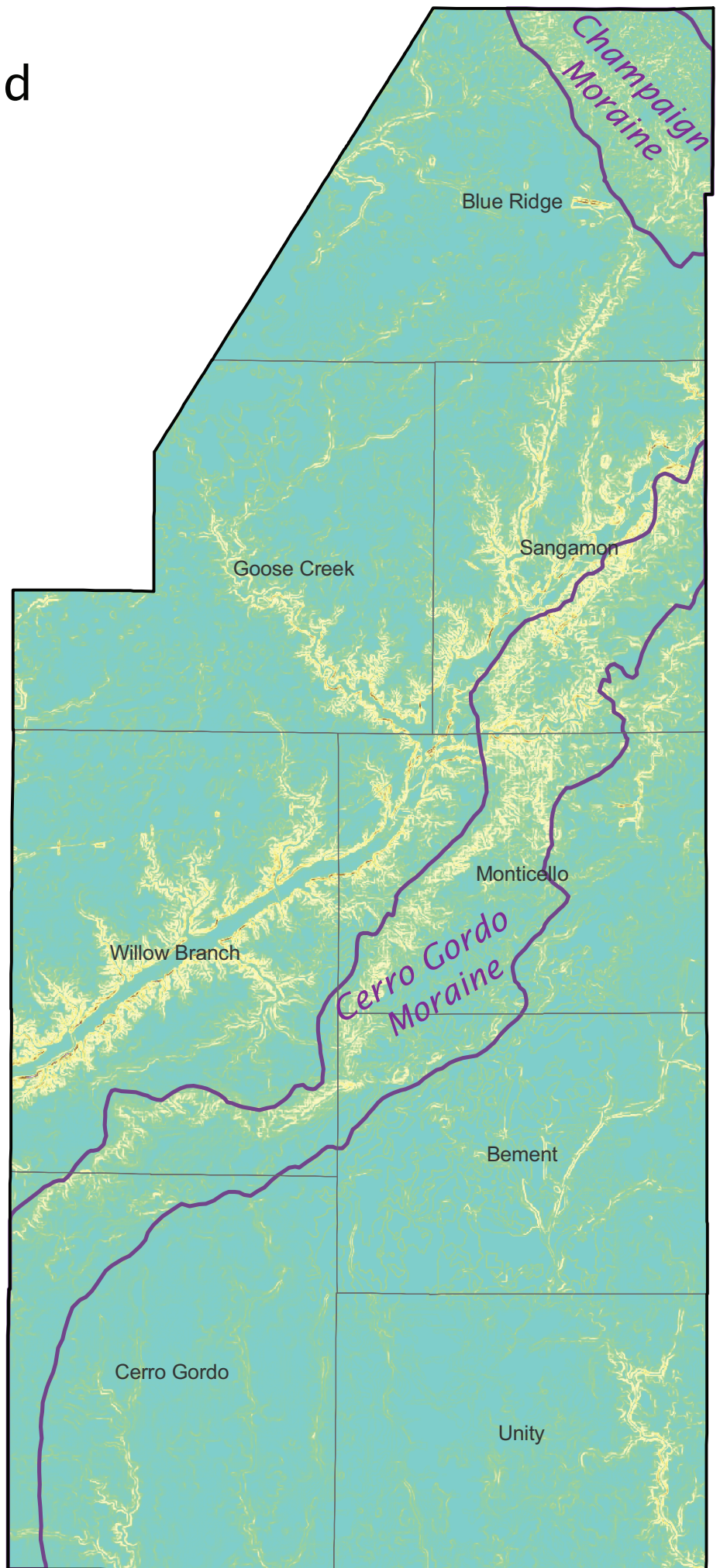
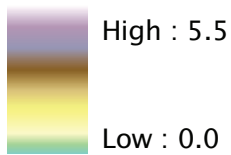
Slope of the Land

Piatt County, Illinois

Legend

-  County
-  Civil Townships

Slope in Percent



0 2 4 Miles

Production Date:
November, 2007

Source:
National Elevation Dataset
ISGS
CCGIS

Average Daily Traffic 2005

Piatt County, Illinois

Legend

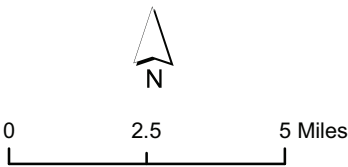
- County
- Average Daily Traffic
- 0 - 600
- 601 - 1,800
- 1,801 - 4,500
- 4,501 - 10,000
- 10,001 - 19,400
- Municipality
- County
- 10

 County Hwy
- 48

 State Hwy
- 150

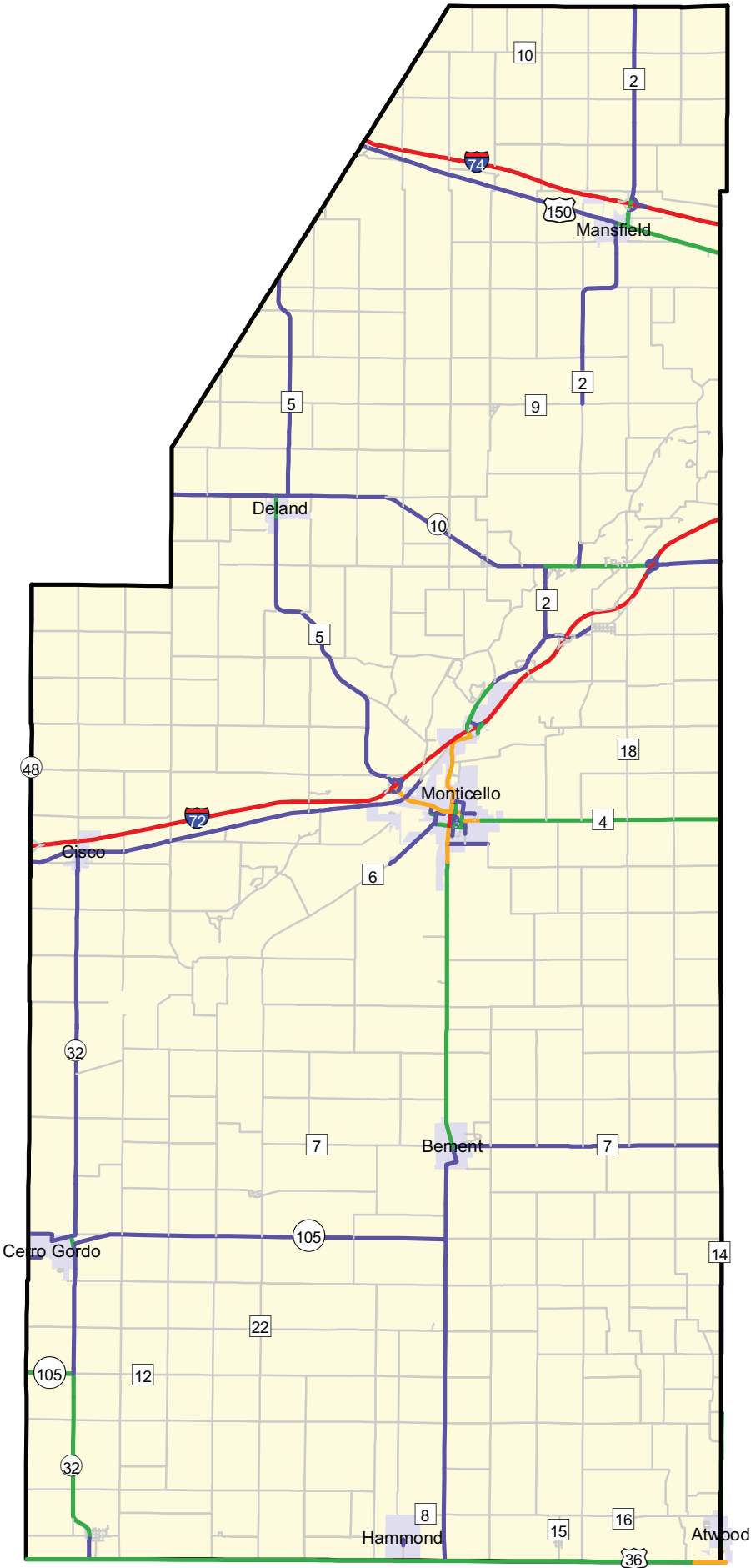
 U.S. Hwy
- 74

 Interstate



Production Date:
November, 2007

Sources:
IDOT
CCGIS



Comprehensive Plan Update Workshop Basemap

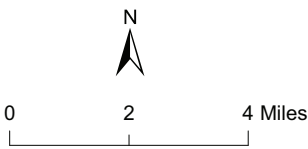
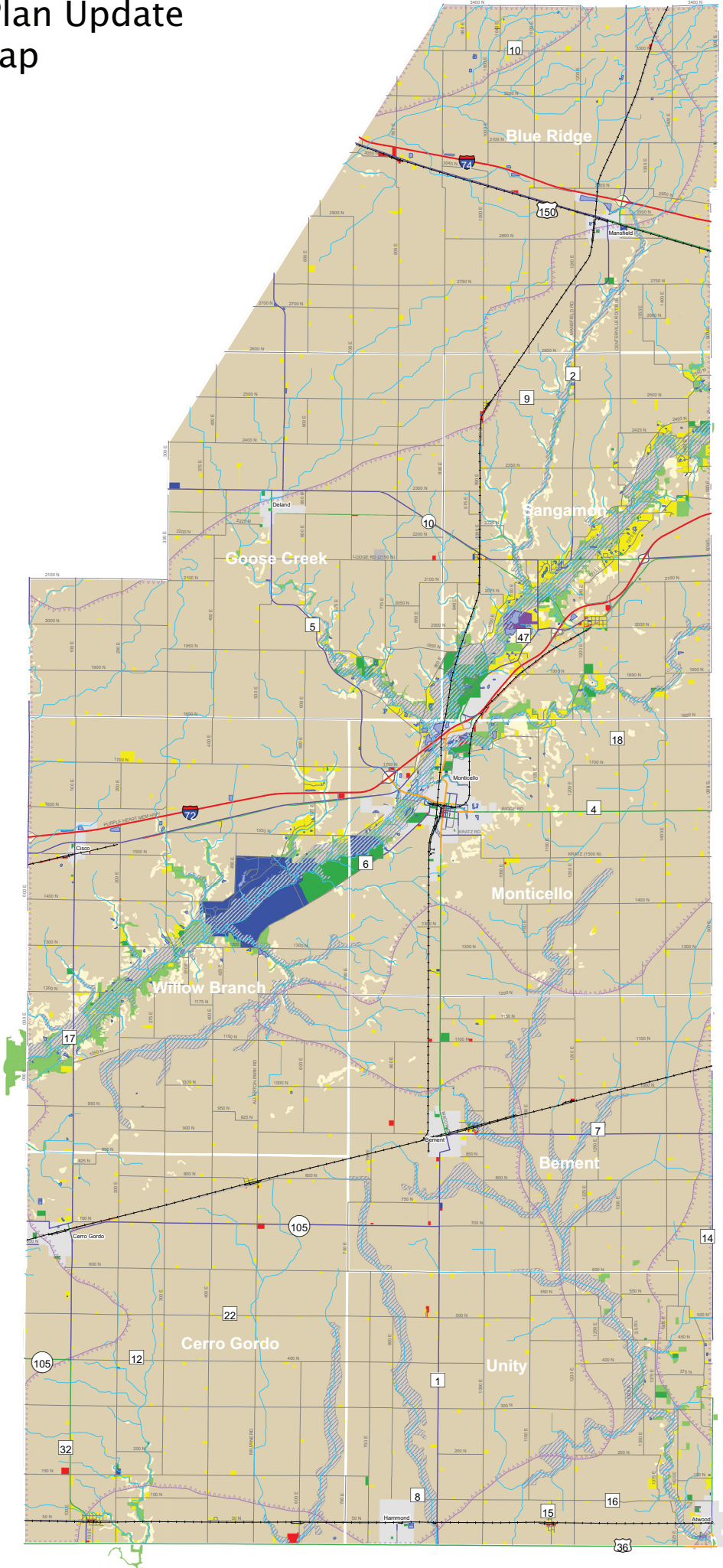
Piatt County, Illinois

Legend

Average Daily Traffic

- 0 - 600
- 601 - 1,800
- 1,801 - 4,500
- 4,501 - 10,000
- 10,001 - 19,400

- Sand and Gravel Aquifer
- Streams
- Lakes
- Wetlands
- FEMA Flood Zone
- Residential
- Utility
- Commercial
- Industrial
- Institutional
- Open Space
- Woodland
- Prime Farmland (LESA)



Sources:
CCGIS
CCRPC
IDOT
ISGS

Piatt County Comprehensive Plan Exit Questionnaire

Before you leave, please take a moment to answer the following questions. Your feedback is crucial to documenting your participation in the Piatt County Comprehensive Plan process and will improve future planning efforts in Piatt County.

Note: All responses will be strictly confidential.

1. What is your gender: ☐ Female ☐ Male
2. Please tell us which ethnic or racial group you most closely identify with:
 ☐ Black/African-American ☐ Asian ☐ White/Caucasian ☐ Other_____
3. Are you Hispanic or Latino? ☐ Yes ☐ No
4. What is your age?
 ☐ under 20 ☐ 20-24 years ☐ 25-34 years ☐ 35-44 years
 ☐ 45-54 years ☐ 55-64 years ☐ 65-74 years ☐ 75 or older
5. Please tell us about your annual household income:
 ☐ Less than \$15,000 ☐ \$15,000 to \$34,999 ☐ \$35,000 to \$49,999
 ☐ \$50,000 to \$74,999 ☐ \$75,000 to \$99,999 ☐ More than \$100,000
6. Please tell us about your education attainment level:
 ☐ Less than a high school diploma ☐ High School Diploma (GED)
 ☐ Some college ☐ College Graduate ☐ Post Graduate study ☐ Post graduate degree
7. How long have you lived in Piatt County?
 ☐ 0-4 years ☐ 5-9 years ☐ 10-19 years ☐ 20+ years ☐ Life-long resident
8. What township do you live in?
 ☐ Bement ☐ Blue Ridge ☐ Cerro Gordo ☐ Goose Creek
 ☐ Monticello ☐ Sangamon ☐ Unity ☐ Willow Branch
9. Are you a land owner in Piatt County? ☐ Yes ☐ No
10. What is your principal occupation? _____
11. How did you learn about the Piatt County Comprehensive Plan Workshop?
 ☐ Newspaper ad ☐ Newspaper article ☐ Sign along road
 ☐ Flyer ☐ County Board member ☐ Word of mouth
 ☐ Website ☐ Other _____

Feel free to add any comments about the Piatt County Comprehensive Plan process, including the Workshop, on the reverse side of this page. Thank you!

This image shows a single sheet of white paper with horizontal ruling lines. The lines are evenly spaced and run across the width of the page. There are no margins, text, or other markings on the paper.

PLEASE PRINT

Piatt County Comprehensive Plan -- Public Workshop - 7/29/08

Revised 7/28/2008

	NAME	Organization	Address	City	ST	ZIP	Phone	E-mail
1	Johnn Shafer	Willow Branch Twp	P.O. Box 153	Cisco	IL	61838	217-669-235	wilb@earthlink.com
2	Sandy Manuel	Blue Ridge Twp	P.O. Box 446	Manassas	IL	61854	217-898-5225	smannu@illinois.edu
3	Jim Reed	P.C. Regional Planning	771E-1950th Rd	Monticello	IL	61856	217-762-3444	
4	John Lyons	University Township	P.O. Box 260	Atterton	IL	61913	578-344	lyons@pride@consolidated.net
5	Tim Hayes		1001 Poplar Lane	Monticello	IL	61856	262-2298	None
6	Judith Harper		P.O. Box 6	White Heath	IL	61884	762-260	None
7	John Lieb	Lieb Farms/Bureau	109 E. 140th St	Monticello	IL	61856	714-4133	
8	Richard Manuel		3094N 1300E Road	Manassas	IL	61854	417-5016	RKMANNU@ILLINOIS.EDU
9	Gary Gorman	Sangamon Twp	1078 IL Rt 10	Monticello	IL	61856	699-4900	Clyonzi@Hoffjones.com
10	DAVE SHERMAN	Blue Ridge	109 N JERRESON	MANASSAS	IL	61854	489-2091	
11	Ray Spencer		108 E. Meek	White Heath	IL	61884	762-2044	ray@illinoisalumni.org
12	Calvin Nolan		1076 IL. 10	Mont	IL	61856	762-7791	
13	Anne Reeser		208 Kipling	Mont	IL	61856	762-5835	anre@peoplepc.com
14	Shirley Hill	Sangamon Twp						
15	Shirley Hill	Sangamon Twp	220 Wagon Trail Rd	White Heath	IL	61884		
16	Mad P. Ben		1 Welsh-cob	White Heath	IL	61884	687-4175	
17	Von Lambert		3 Welsh cob	White Heath	IL	61884	687-2855	Von.Lambert@gmail.com
18	Dick Paterson		235 N Western	Delam	IL	61839		
19	Joseph T. Howard		1365 Treasure Lane	White Heath	IL	61884		
20	William Parker		2171 Railroad St	Sledge	IL	61856	217-762-2698	

PLEASE PRINT

Piatt County Comprehensive Plan -- Public Workshop - 7/29/08

Revised 7/28/2008

	NAME	Organization	Address	City	ST	ZIP	Phone	E-mail
21	M. Ke W. Leaver	County Board	1517 N. 1000 EAST RD	Monticello	IL	61856	762-5586	
22	Jonathan Mansel	Piatt County School	1201 A Bear Lane	Monticello	IL	61856	762-2146	EM13
23	Dick Wilkin	PC BBER	302 E. Washyke	"	"	"	762-2654	
24	Sandra Melvick	PIATT	302 E. Center	"	"	"	762-9096	-
25	Steve Braddock	Farm Bureau	PO Box 23	"	"	"	762-2128	diet@piatt-fs.com
26	Paul Stead	Citizen	1019 SONS TOWN ROAD	"	IL	"	778-6658	full@piatt-fs.com
27	Dianne Geissal	Citizen	2033 Shady Run Rd.	"	IL	61856	762-2853	dianne.geissal@evanstonhospital.org
28	Wyatt Muse	Citizen	1378 E. 1600 N Rd	"	IL	61856	369-1805	Wyatt@illinoisalumni.org
29	Brent Buckner	Citizen	8 Welsh Cob	White Hall	IL	61884	687-4035	pbuckner@hotmail.com
30	Mike Nolan	Citizen	1076 Old Rt 10	Monticello	IL	61856	762-2791	madenrun@monticello.net
31	Quane Kempson	Piatt Co. Veteran	9 Parnassus Lane	White Heath		61884		
32	Craig Myers		830 Alverton Rd	Monticello	IL	61856	762-5545	Craig@craigmyers.net
33	Eric Miller	P.C.F.B.	36 Long Grove Dr.	Mont.			762-8189	
34	Woodrow Chennault	Resident	1074 Bucks Pond Rd	Monticello	IL	61856	762-4271	wehenault@net66.com
35	Sheila Maloney	Citizen	4 Welsh Cob Cir.	White Heath	IL	61884	687-4188	maloney.sj/bert@net66.com
36	Carly Peterson	Citizen	235 N. West in PO Box 235	DeLand	IL	61839	417-6485	carly@petersonmail.com
37	Mary Parker	Citizen	2171 Railroad St.	Fodge	IL	61856	762-2678	
38	MARK GIBBERT	CITIZEN	4 Wagon Creek	White Heath	IL	61884	687-4480	markgibbert@people.com
39	Amy Meyer	Citizen	4 River Valley Ranch	White Heath	IL	61884	687-4128	
40	Bill Meyer	CITIZEN	4 River Valley Ranch	White Heath	IL	61884	687-4128	gruvemai@isp.com

PLEASE PRINT

Piatt County Comprehensive Plan -- Public Workshop - 7/29/08

Revised 7/28/2008

	NAME	Organization	Address	City	ST	ZIP	Phone	E-mail
41	Paul Danks		184 E Lincoln St	Montgomery	IL	61856	762-7702	
42	Roger Hendrix		702 E 600 N. Rd.	Bement	IL	61813	618-8057	
43	Paul Quick		211 W LOCUST	ATWOOD	IL	61913	578-2562	
44	Max Olson		906 CRESTVIEW DR.	MONTICELLO	IL	61854	762-7936	
45	Ellen Robrock		112 E 1045 North Rd.	Cerro Gordo	IL	61818	763-3601	
46	Dick Robrock		" "	"	"	"	"	
47	Sandra Smith		208 E 1400 North Rd	Cerro	IL	61830	217-669-2167	
48	Jim Smith		" "	"	"	"	"	
49	Trisk Gale		1824 County Farm Rd	Mont.	IL	61856	217-762-7394	
50	Jack Harper		14 SAND LAKE RD	Mont	IL	61856	762-8688	
51	Connie Hendrix		1826 Bucksford Rd	Mont	IL	61856	762-7402	
52	Perry Hendrix		" "	"	"	"	"	
53								
54								
55								
56								
57								
58								
59								
60								

WORKSHOP ANALYSIS AND RESULTS

Purpose

The Public Participation workshop garners input from the residents of Piatt County about topics that will be addressed in the Comprehensive Plan. These topics include local economy; community facilities; utilities; housing; historic and cultural resources; transportation; land use; natural resources; and nature preserves, parks and recreation. Input obtained ranges from opinions about quantity and quality of existing conditions to perceptions of future conditions and desires.

Methodology

The Piatt County Public Participation workshop was held at the Monticello Community Building in the City of Monticello the evening of July 29, 2008. Residents were notified about this workshop through posters placed around the county at major intersections and in communities, newspaper advertisements and articles, announcements from the County Board, and other means.

The workshop was split into three sections and lasted for two and one half hours. The first exercise, a SWOT analysis, identified strengths, weaknesses, opportunities, and threats of the topics listed above. This was done through a simple presentation and dialog with participants.

The second exercise consisted of a 13-question multiple choice survey that focused on defining the rural character of Piatt County, identifying desirable development types, and perceptions of conserving the environment and agricultural land use.

The third exercise asked participants to map specific attributes of their county as well as potential solutions to an industrial development scenario. A base map and series of reference maps were used to help locate specific attributes that could be used to make informed decisions.

Demographics

Demographic information was collected to determine the type of sample achieved. With 43 participants, no result of the workshop can be stated as representative of the views of the county. However, the information obtained from the participants greatly enhances the planning efforts by the Piatt County Regional Planning Commission. The information from the workshop will be used to help identify concerns and ideas that are affecting residents in Piatt County.

The following tables compare demographic data from the workshop participants to data from the 2000 U.S. Census for Piatt County.

Gender	Workshop	2000 Census
Female	60%	52%
Male	40%	48%

Race	Workshop	2000 Census
Caucasian	100%	99%
Black	0%	0.2%
Other	0%	0.8%

Age	Workshop	2000 Census
20-24	2%	4%
25-34	9%	10%
35-44	7%	17%
45-54	19%	14%
55-64	28%	14%
65-74	26%	8%
75 over	9%	8%

Income	Workshop	2000 Census
Under 15,000	5%	11%
15,000-34,999	12%	25%
35,000-49,999	7%	20%
50,000-74,999	14%	25%
75,000-99,999	23%	11%
100,000 or more	30%	8%
No response	9%	N/A

Resident Characteristics

Workshop participants had higher educational attainment than the general population, with 68% having a post graduate degree versus 21% for the general Piatt County population.

Participants were predominantly long-term residents, and the majority (44%) live in Sangamon Township. 86% of the participants own land within Piatt County and 21% are currently retired.

Education

	Survey	Census
High School Diploma	12%	37%
Some College	16%	24%
College Grad	37%	13%
Post Grad Study	12%	N/A
Post Grad Degree	19%	8%
No Response	5%	N/A

Tenure in Piatt County

	Survey
0-4 years	5%
5-9 years	7%
10-19 years	16%
20+ years	35%
Life long resident	37%

Township of Residence

	Survey	Census
Bement	5%	12%
Blue Ridge	9%	9%
Cerro Gordo	0%	13%
Goose Creek	14%	5%
Monticello	14%	34%
Sangamon	44%	12%
Unity	5%	10%
Willow Branch	7%	4%
No Response	2%	N/A

Land Owner

	Survey
Yes	86%
No	14%

Occupation

	Survey
Retired	21%
Agriculture	19%

SWOT Analysis

A Strengths, Weaknesses, Opportunities, and Threats exercise seeks to gain as many different perspectives as possible regarding a specific set of topics. For the Piatt County public workshop, the topics were:

- local economy
- community facilities
- utilities; housing
- historic and cultural resources
- transportation
- land use
- natural resources
- nature preserves, parks and recreation

The facilitator sought at least three strengths, weaknesses, opportunities and threats for each topic; in some cases, many more were identified.

Once the perspectives are collected, they are used to help identify goals and objectives for the plan. Strengths are things happening currently that we want to promote, sustain, or support. Weaknesses are also about present conditions, and are things we need to improve upon or strengthen. Opportunities are typically about the future, and are things we need to promote, seek, or encourage. Threats are also typically about the future, and are things we want to avoid or mitigate. We can use our strengths and build upon our weaknesses to help realize opportunities and minimize threats.

The following pages list those strengths, weaknesses, opportunities and threats identified by participants for each of the aforementioned topics.

Housing

Strengths

- school districts attract residents to Piatt
- good healthcare/proximity to Kirby & CU hospitals, et al
- low taxes
- affordable housing
- proximity to UIUC
- good locations between CU and Decatur
- I-72, I-74
- good food source
- rural atmosphere/rural living away from big cities
- drainage district maintenance
- good growth with low infrastructure expenses
- clean air
- low crime rate
- excellent drinking water
- pleasant landscape
- parks, Forest Preserve District

Weaknesses

- Monticello annexing subdivisions
- housing increases drainage needs, which can affect roads
- decreasing wildlife habitat due to rural housing
- hedgerows removed for more agriculture decreases wildlife habitats
- increase rural housing increases road and infrastructure maintenance
- decrease in rural character due to increase in rural housing
- conflicts between existing rural use and emerging rural uses
- losing prime farmland to residential development
- increased damage to ecosystems and streams
- mean income is \$52k; not adequate for lower income residents
- distance to activity/employment centers means higher gas costs

Opportunities

- Monticello annexations are an opportunity for infrastructure extension
- wide range of housing types
- places of work outside county
- high taxes and poor schools in outside areas bring people to Piatt
- incentivize retirement housing
- opportunities for using renewable energy
- aging housing stock can get help from incentives
- possible tax structures that can help plan implementation

Threats

- state mandates (i.e. septic system rules)
- lack of industry affects tax base, getting people to stay (threat because industry isn't being allowed in, threat of losing what we have)
- rural development keeping people from coming into town to spend money
- industrial development is too close to housing
- threat to privacy due to increase in housing subdivisions

Strength

Promote/Sustain/Support

Weakness

Improve/Strengthen

Opportunity

Promote/Seek/Encourage

Threat

Avoid/Mitigate

Economy

Strengths

- small businesses
- strong ag economy
- proximity to intellectual capital (UIUC)
- entrepreneurial spirit
- growing tourism
- relatively low unemployment at county level

Weaknesses

- not enough jobs, industry
- having to work outside the county with high gas prices
- underemployed residents

Opportunities

- trained personnel are available
- opportunity to engage emerging industries
- bio tech startups, especially related to ag, which could come from places like UIUC
- opportunity to attract businesses that can process ag products
- good infrastructure for industry

Threats

- big cities--existing industries might detract
- strong opposition to new industry
- declining economy in large cities like Decatur a threat to adjacent communities
- no existing facilities for expansion/growth--might make companies move elsewhere
- increasing property tax levels
- competing regions can leave some facets out of plan

Strength

Promote/Sustain/Support

Weakness

Improve/Strengthen

Opportunity

Promote/Seek/Encourage

Threat

Avoid/Mitigate

Agriculture

Strengths

- best land/soils anywhere
- desire to preserve farm ground
- climate
- ag related facilities
- diversity of crops

Weaknesses

- farm income not keeping up with inflation
- soil erosion
- lack of next generation of farmers/lack of opportunities
- small farmers are not feasible
- federal legislation (more do's and don't's)
- loss of farmland to development

Opportunities

- research
- product development
- biomass

Threats

- subdivisions
- industry
- people moving to rural subdivisions not understanding surrounding ag ways
- external megafarms bidding on opportunity to cash rent
- 1031 money coming in to drive prices up--artificially inflates the economy
- rising price of farm inputs/petroleum

Strength

Promote/Sustain/Support

Weakness

Improve/Strengthen

Opportunity

Promote/Seek/Encourage

Threat

Avoid/Mitigate

Parks and Recreation

Strengths

- lots of parks
- Allerton Park
- well-designed parks
- good outdoor recreational facilities
- good distribution throughout county

Weaknesses

- lack of infrastructure (ex: bridge at Allerton)
- lack of maintenance and support to maintain them
- lack of green space in new subdivisions
- lack of promotion
- aging park infrastructure/facilities
- infestation by non-native/invasive species
- need more handicap accessibility at Allerton, other parks

Opportunities

- increased tourism
- lack of maintenance creates atmosphere of volunteerism
- unutilized Rails to Trails system has potential
- opportunity to promote Piatt in a positive light

Threats

- funding
- loss of diversity
- West Nile

Strength

Promote/Sustain/Support

Weakness

Improve/Strengthen

Opportunity

Promote/Seek/Encourage

Threat

Avoid/Mitigate

Natural Areas

Strengths

- good planning by farmers/landowners to preserve land
- Allerton--diversity of species
- Sangamon River corridor
- increased use of trees in landscaping
- creeks and drainage districts for recreation, making ground farmable/stabilizes soil
- timberland

Weaknesses

- divergent uses/needs of natural areas
- lack of natural areas in new subdivisions
- deforestation trend
- trash and litter
- promoting snake habitats
- natural areas take land out of production

Opportunities

- developers seem to like building around natural areas
- more human interaction if they are further developed with trails, facilities
- safe wildlife habitat
- opportunity to preserve remaining natural areas
- education
- promote hunting

Threats

- subdivisions/development/larger farms taking away natural areas
- dissection of wildlife habitats by development fragmentation
- state cutting funds to help areas

Strength

Promote/Sustain/Support

Weakness

Improve/Strengthen

Opportunity

Promote/Seek/Encourage

Threat

Avoid/Mitigate

Environment

Strengths

- clean
- Piatt Co. Soil & Water Conservation District
- spirit of good environmental stewardship
- industries are aware of environment in Piatt

Weaknesses

- lack of good stewardship in some cases
- lack of countywide recycling program

Opportunities

- None listed

Threats

- well digging by Champaign and Decatur
- state control of funding
- state mandates
- possibility of industrial contamination
- necessity of crop spraying

Employment

Strengths

- Low unemployment

Weaknesses

- low unemployment
- lack of local jobs in Piatt
- brain drain

Opportunities

- None listed

Threats

- lack of infrastructure to support large industries (i.e. gas lines)
- also in smaller communities (i.e. sewage systems)
- lack of creativity; need for more forward thinking rather than dwelling on the past

Strength

Promote/Sustain/Support

Weakness

Improve/Strengthen

Opportunity

Promote/Seek/Encourage

Threat

Avoid/Mitigate

Infrastructure

Strengths

- excellent opportunities for water

Weaknesses

- aging roads, bridges
- poor drainage on rural secondary roads
- deterioration of state highways
- lack of money to improve
- lack of conjunction of all infrastructure types to optimize use
- no room to upgrade/expand facilities

Opportunities

- opportunity to build rail sidings
- high speed internet
- develop local wind/solar power

Threats

- lack of money to maintain
- lack of qualified personnel
- oil prices affect road maintenance
- eroding tax base and increased demand for services

Public Services

Strengths

- volunteers
- good forest preserve district
- good transportation dept: Piattran
- teacher-student ratio

Weaknesses

- lack of social services for aging, poor
- lack of info/advertising for available services
- minimal public transportation systems
- no room to upgrade/expand facilities
- lack of ambulances in smaller towns/high response times

Opportunities

- insurance (ISO) ratings

Threats

- less state money
- declining populations to serve around Monticello
- cost of transportation for rural schools

Strength

Promote/Sustain/Support

Weakness

Improve/Strengthen

Opportunity

Promote/Seek/Encourage

Threat

Avoid/Mitigate

Transportation

Strengths

- Piattran
- 2 day truck travel to most of US--good location
- law enforcement getting drunks off roads
- 2 interstates
- airports: 3 within 1 hour drive

Weaknesses

- lack of junction between travel modes, especially between road and rail
- problem getting low income patients home from hospital
- lack of funding
- lack of bike trails
- sidewalks not always available

Opportunities

- coordinate commuter transport given increased gas prices and existing rail
- possibility of taxi services

Threats

- high truck traffic threatens highways
- competition of ag equipment on roads

Strength

Promote/Sustain/Support

Weakness

Improve/Strengthen

Opportunity

Promote/Seek/Encourage

Threat

Avoid/Mitigate

Rural Character Questionnaire

When asked what effects rural development has had on rural lifestyles in general, the participants were split between positive (48%) and negative (39%).

When asked about how rural development affected other specific aspects of rural quality, participants responded in the following manner:

	Positive	Negative	Both	No Effect
Drinking Water	8	13	0	19
Lake Water	7	9	0	25
Rivers	9	17	0	9
Wildlife Habitat	9	26	1	5
Open Space	9	25	1	6
Fishing	7	26	0	8
Farming	8	25	0	8
Night Sky	10	22	0	9
Sounds of Nature	7	20	0	12
Community Values	22	12	0	5
Crime	9	14	0	17
Quality of Schools	27	2	0	10
Job Opportunities	13	10	0	16
Transportation	9	12	0	17
Road Maintenance	10	25	0	5
High Quality Housing	27	5	0	5
Affordable Housing	8	16	1	13
Scenic Views	10	23	0	7

“Rural character” refers to the way land is used and the activities that take place in unincorporated areas.

In a further attempt to define rural character, participants were asked to write a phrase that defined traditional rural value. Twenty people responded with a variety of statements.

- "Ah the smell of money"
- Being able to roam as you please
- Caring, courtesy, and cooperation
- Family farms
- Home town pride and community
- Honor the golden rule
- Keeping housing away from prime farmland
- Maintaining existing farm ground, limit development
- Neighbors helping neighbors
- Open area with fields of grain, farm animals in pastures
- Open spaces with rural scenes
- Peace at home and heart
- Preservation of country living and farming without urban development
- Privacy not diminished by too many people
- Sense of community
- Small minded farmers
- The ability of farm families being able to make a living without interference from city people who have chosen to move to the rural areas
- Traditional rural value incorporates appreciation of land and its value while realizing that change is inevitable with the goal of benefiting all.
- Values linked to the land and its use for agriculture and animal husbandry in a morally responsible fashion

Rural communities have a variety of gathering places. Participants felt the strongest sense of community within their neighborhoods (42%). Others include church, political groups, town meetings, and children's activities.

The remaining questions are focused on how land is used and the importance of particular land use types.

When asked if agriculture is an important part of the Piatt County economy, 98% of the participants agreed that it is and 90% of respondents stated that land used in agriculture should be conserved. 95% of respondents agreed that forested and prairie areas should be conserved and 95% of respondents agreed that rural character should be preserved.

"Conserve" refers to a type of management of landscapes that maintains productivity and use for future generations.

All respondents stated that they believe natural area corridors are important for recreation as well as flood control, pollution control, and climate regulation.

Participants were asked which types of development are most desirable for Piatt County.

Development Type

Current Development	12%
Subdivision Development	21%
Development on land only unsuitable for farmland	55%
Single Family homes on lots smaller than 5 acres	29%
Single Family homes on lots larger than 5 acres	26%
Lots that are spread far apart	14%
Lots that are clustered together	17%

Other types of development that were listed as desirable include:

- As an extension to existing city limits – not sprouted up in the middle of nowhere
- I don't see any downside to development it is the one thing that brings money into the county. Leave the north alone; work on development in the South. Leave Sangamon Township alone.
- Less "McMansions" discourage through property tax assessment policies. Redevelop existing developed areas vs. taking prime farmland. Enforce zoning regulations with fewer variances granted.
- Preferably, no more sprawl
- Retirement homes
- Within city limits
- would like uniform subdivision standards enforced with roads required to be with two egresses required by all developers, no gravel roads allowed--might serve to keep subdivision development in check. Same road widths required by all--too many...

Participants were asked specifically what type of industrial development they preferred for Piatt County.

<u>Industry Type</u>	
Heavy Manufacturing	17%
Light Industry	62%
Agricultural Industry	48%
None of the Above	19%

“Rural development” refers to development outside incorporated areas. Rural development can consist of a variety of uses and residential densities, including clustered residential development.


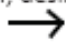



The survey concluded by asking if people in Piatt County felt informed about the decisions made by the County government. 45% stated that they felt informed. When asked what media best communicated government activities, 48 % stated newspaper and 24 % stated a mailed newsletter. The least popular methods included emails and websites.

Public Workshop Exercises

Piatt County Comprehensive Plan Update

Tuesday July 29, 2008

Mapping Exercises

1. Identify areas of environmental and ecological value that are important to preserve regardless of ownership or expense. Describe them if it is not clear what the unique feature is for the areas.
 - A. Mark these by drawing a green boundary around the area and apply diagonal hash marks.

2. Identify areas that you believe to be scenic landscapes that you feel should be preserved purely for their visual qualities.
 - A. Draw a thick green arrow, from view points to the prominent feature in view (rolling hill, aesthetic barn, etc.).

 - B. Also draw a line for approximate locations of where you would like to see walking or biking trails or other activity centers to enhance active lifestyles in rural areas.

3. An industrial firm wants to locate in Piatt County. Assume for the purposes of this exercise that:
 - They can develop anywhere in the County
 - They need access to rail and/or highways
 - Water supply and available infrastructure are not factors in selecting potential sites
 - A. Where do you recommend they locate? Identify as many areas as possible based on the assumptions with a simple red polygon and provide your reasons on the attached comment sheet.

 - B. In what areas should this type of development be restricted? Identify as many areas as possible based on the assumptions using a red polygon with an X through it and provide your reasons on the attached comment sheet.




Comprehensive Plan Update Workshop Basemap

Piatt County, Illinois

Legend

Average Daily Traffic

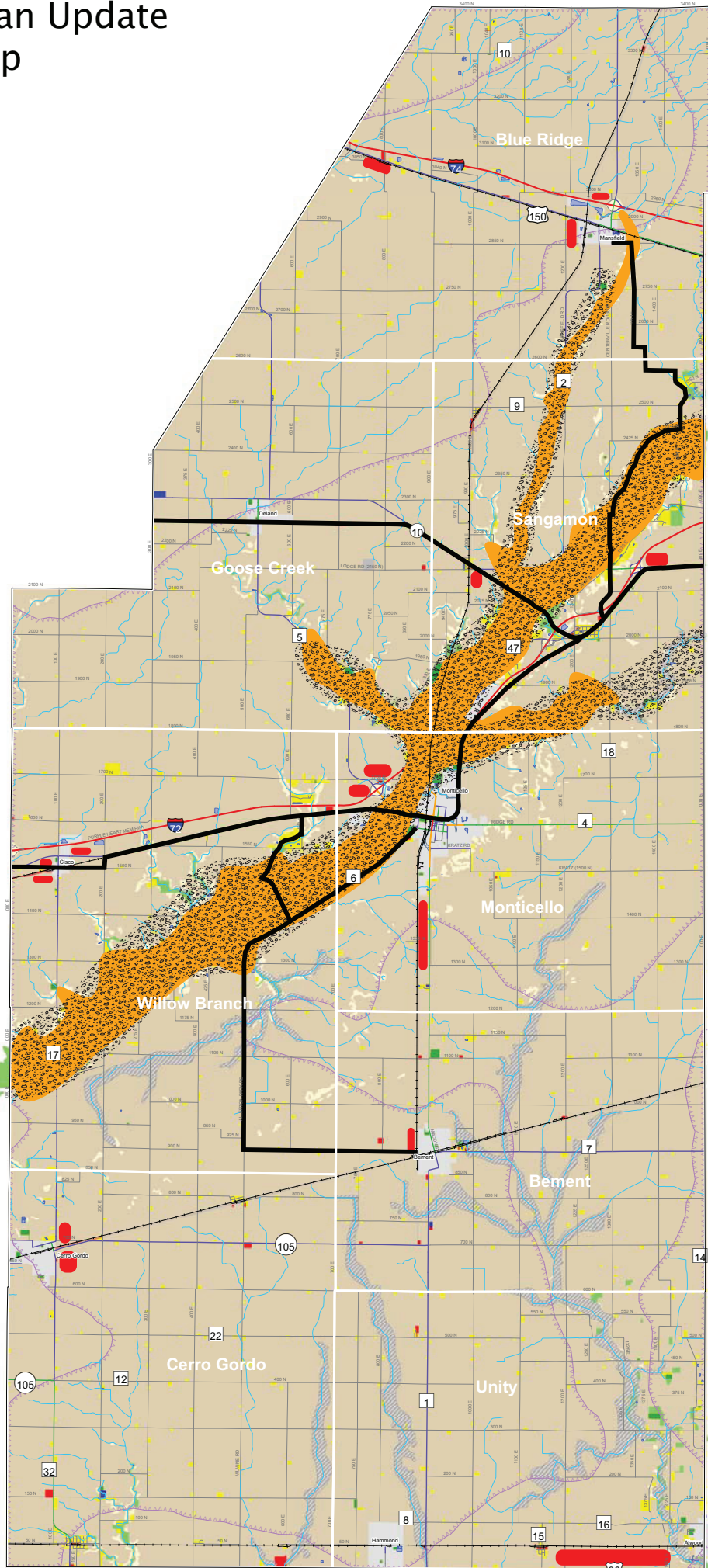
- 0 - 600
- 601 - 1,800
- 1,801 - 4,500
- 4,501 - 10,000
- 10,001 - 19,400

- Sand and Gravel Aquifer
- Streams
- Lakes
- Wetlands
- FEMA Flood Zone
- Residential
- Utility
- Commercial
- Industrial
- Institutional
- Open Space
- Woodland
- Prime Farmland (LESA)
- Sensitive Environment
- Industry not desired
- Industry desired
- Trail Development



0 2 4 Miles

Sources:
CCGIS
CCRPC
IDOT
ISGS



**Synthesis of Public Input from July 29, 2008 Public Workshop
and July 1, 2008 Existing Conditions Report for Piatt County**

Element	Public Workshop Input	Related Existing Conditions Factors
Housing	Incentives for improving aging housing stock and for creating housing for the elderly were both suggested	One third of Piatt County's housing units were constructed before 1939.
	Some questioned the affordability of housing for those at or below the median income for Piatt residents	Home values are increasing and reaching those of more urban counties such as Champaign and McLean counties.
	The following factors were identified as influential to deciding to live in Piatt County: proximity to larger cities, University of Illinois	
	Participants felt that rural housing developments are detrimental to agriculture, prime soils, the environment, rural character, and infrastructure demand.	Most recent rural housing growth has occurred in Sangamon and Willow Branch townships.
	The following factors were identified as influential to deciding to live in Piatt County: access to good schools, healthcare, affordable housing; landscape, rural atmosphere, parks, clean air	Student-teacher ratios are mostly lower than Illinois averages. A good portion of Piatt County employment is in the healthcare sector. Piatt County has a considerable inventory of parks and open spaces.
	Participants identified that there are opportunities for using renewable energy in housing.	Much of Piatt County is rated as having fair potential for wind energy and capability for solar energy.
Economy	Small businesses, entrepreneurial spirit, and a strong agriculture sector are seen as the backbone of Piatt County's economy	The number of private sector establishments increased by 10% between 1997 and 2002.
	Participants want to see more industry and good jobs in Piatt County	Between 2001 and 2006, the number of employees in manufacturing decreased from 562 to 335. Other sectors such as construction and services saw significant increases.
	Participants feel there are opportunities for agriculture related industries in Piatt County	Between 2001 and 2006, the number of employees in farming decreased from 568 to 533.
	Larger nearby cities affect the economy and employment in Piatt County	More Piatt County residents work in adjacent counties (58.7%) than in Piatt County (41.3%).
Agriculture	Participants feel that the area has the best soils in the world and that they want to preserve farm ground	96.6% of the land in Piatt County is considered prime farmland.
	Participants feel that small farms are not feasible, that there are not opportunities for the next generation of farmers, and that farm income is not keeping up with inflation	Employment in farming is anticipated to decrease according to projections through 2030. Total net farmland income between 1969 and 2006 has generally been decreasing in Piatt County.
	Participants feel that development is taking over farmland	Sangamon and Willow Branch townships, which are largely rural, had the highest number of residential building permits granted between 1999 and 2007 (65% of all residential building permits granted in the county).
Parks & Recreation	Participants feel that there is a good quantity and quality of parks and related facilities in Piatt County.	There are over 3000 acres of parks in Piatt County.
	Participants feel that the parks and facilities could be maintained and upgraded more, and need more money to do so.	--
	Participants feel that marketing and tourism could be opportunities for Piatt County parks.	--

**Synthesis of Public Input from July 29, 2008 Public Workshop
and July 1, 2008 Existing Conditions Report for Piatt County**

Element	Public Workshop Input	Related Existing Conditions Factors
Natural Areas	Participants perceive that subdivisions, development, and larger farms are taking away from natural areas	In 1850, approximately 9% of the county was forested; currently it is about 3% forested.
	Participants perceive that natural areas are taking land out of production.	92% of Piatt County's land is used as farmland; less than 3% is undeveloped (i.e. forests and prairies not managed for production).
	Wildlife habitats are being dissected by development.	IDNR Critical Trends Assessment Project (1997) stated that wildlife habitat in Piatt County has largely been converted to agricultural land uses through forest cutting and the draining of wetlands.
Environment	Participants identify a lack of a countywide recycling program.	--
	Participants consider Piatt County to have a generally clean environment.	--
	Participants believe that existing industries are aware of the environment and want to ensure that potential industries follow their lead.	--
Infrastructure	Participants perceive excellent opportunities for water resources.	The Mahomet Aquifer is the primary groundwater source for much of east central Illinois.
	Participants perceive an overall need for upgrading/maintenance of transportation facilities such as bridges, secondary roads, aging infrastructure, and a lack of money to make such improvements.	Piatt County has over 1,000 miles of roadways.
	Participants expressed not having room to expand and upgrade infrastructure facilities.	Some road rights-of-way do not have room for widening.
	Participants see opportunities for wind and solar energy and for high-speed internet access.	Much of Piatt County is rated as having fair potential for wind energy and capability for solar energy.
Services	Participants perceive a lack of social services for aging and/or low income residents.	Numerous organizations provide services to aging and/or low income residents in Piatt County.
	Participants perceive a lack of information/advertising about available social services programs.	--
	Participants perceive a lack of ambulances and high response times in smaller towns.	There are three ambulance providers in Piatt County; one based in Cerro Gordo and two based in Monticello.
Transportation	Participants perceived Piatt County as having a convenient location to interstates, airports, and regional destinations.	Two interstates traverse Piatt County. Numerous regional airports and international airports are within 1-3 hours driving distance. Chicago, St. Louis, and Indianapolis are all within 3 hours of Piatt County.
	Participants identified a lack of pedestrian and bicycle facilities in general.	There is no long-term plan for pedestrian and bicycle facilities construction; there are a few bicycle/pedestrian paths in Piatt County.
	The conflict and safety issues between agricultural vehicles and other roadway users was identified.	--
	More connectivity between travel modes (i.e. road and rail) was also identified as desirable.	--
	Participants think that Piattran is a positive resource, but suggest that public transit service could be expanded.	Piattran was undergoing a community needs study earlier in 2008.

PIATT COUNTY COMPREHENSIVE PLAN

PUBLIC HEARING & PUBLIC COMMENT PERIOD

The Piatt County Board
would like to announce that the
Draft Piatt County Comprehensive Plan
is available for public review and comment.
Please let us know what you think by
participating in these opportunities:

PUBLIC HEARING

Tuesday, August 18, 2009
7:00 PM
Monticello Community Building
102 East Livingston Street
Monticello

30 DAY PUBLIC COMMENT PERIOD

Monday, July 27 - Tuesday,
August 25, 2009

Document review locations:

- Piatt County Courthouse
- Allerton Public Library
- Online at www.piattrpc.org

Comments received will be considered prior to
final approval of the Plan by the County Board.

For more information, to request a paper or CD copy of the Draft Plan,
or to arrange special accommodations, contact
Susan Chavarria at 328-3313 or via email schavarr@ccrpc.org.

www.piattrpc.org

The Piatt County Board contracted with the Champaign County
Regional Planning Commission to update the Comprehensive Plan.

The following display ad was published in the following newspapers:

- Arcola Record Herald, July 30th
- Journal Republican, July 29th and August 12th
- News Gazette, July 26th
- Southern Piatt Record Herald, July 29th and August 12th

PIATT COUNTY COMPREHENSIVE PLAN: *Your County, Your Future*

We want to hear from you!

The Piatt County Board would like to announce that the Draft Piatt County Comprehensive Plan is available for public review and comment.

Please let us know what you think by participating in these opportunities:

PUBLIC HEARING

Tuesday, August 18, 2009
7:00 PM

Monticello Community Building
102 East Livingston Street, Monticello

30 DAY PUBLIC COMMENT PERIOD

Monday, July 27 - Tuesday, August 25
Document review locations:

Piatt County Courthouse, Allerton Public
Library, online at www.pcrpc.org

Comments received will be considered prior to final approval of the Plan by the County Board.
For more information, to request a paper or CD copy of the Draft Plan, or to arrange special accommodations,
contact Susan Chavarria at 328-3313 or via email schavarr@ccrpc.org.

LEGAL NOTICE as PUBLISHED IN THE August 12, 2009, Piatt County Journal Republican

LEGAL NOTICE

PUBLIC NOTICE OF MEETING PIATT COUNTY REGIONAL PLANNING COMMISSION

NOTICE IS HEREBY GIVEN,
that the Piatt County Regional
Planning Commission
(PCRPC) will hold a Public
Workshop regarding the Piatt
County Comprehensive Plan
Draft at 7:00pm on Tuesday,
August 18, 2009, Rotary
Room, Monticello Communi-
ty Building, 201 N. State
Street, Monticello, IL 61856.

For more information, please
contact Susan Chavarria at
328-3313, Sharon Martin at
687-2628, or Trish Gale at
762-3111.

All meetings are open to the
public. Dated this 7th day of
August, 2009, at Monticello,
IL

By:

Sharon Martin,
Piatt County Board Chairman

Trish Gale,
Secretary - PCRPC

965615 08/12

Procedures for PCRPC Public Hearing

August 18, 2009

- Procedures are at the discretion of the Chairman, within the parameters established by law
- If you would like to speak before the Commission, fill out and submit a Speaker Identification Form
- 5 minute time limit per speaker
- If presentation exceeds 5 minutes, the remainder can be presented in written form that will be conveyed to the Commission at their next meeting
- Representatives speaking on behalf of a group are welcome
- Questions should be directed to the Commission as a whole rather than toward a specific Commissioner
- Commissioners may ask questions of presenters
- No PowerPoint presentations are permitted
- Handouts can be provided to Commissioners during a presentation, but not to the audience; audience members can receive them before or after the public hearing so as not to disrupt the hearing process

Your ideas are very important to this planning process. Please use this sheet to let us know of any comments you have about the Draft Piatt County Comprehensive Plan. Your comments will be submitted to the Piatt County Regional Planning Commission Board for their consideration.

Susan Chavarria
CCRPC
1776 East Washington Street
Urbana, IL 61802

Please specify "Piatt Plan Public Comment" in the subject line and provide your name and community or township at the end of your comments. Email to schavarr@ccrpc.org by August 25th.

This image shows a single sheet of white paper with horizontal ruling lines. The lines are evenly spaced and run across the width of the page. There are no margins, text, or other markings on the paper.

Piatt County Regional Planning Commission
August 18, 2009 Public Hearing
PUBLIC SPEAKER IDENTIFICATION FORM

Name: _____

Home Address: _____

Phone: _____

☐ I would like to speak during the public hearing

☐ My attorney will represent me during the hearing
Attorney's Name: _____

☐ Someone else will speak on my behalf
Representative's Name: _____

Piatt County Regional Planning Commission
August 18, 2009 Public Hearing
PUBLIC SPEAKER IDENTIFICATION FORM

Name: _____

Home Address: _____

Phone: _____

☐ I would like to speak during the public hearing

☐ My attorney will represent me during the hearing
Attorney's Name: _____

☐ Someone else will speak on my behalf
Representative's Name: _____

**Piatt County Regional Planning Commission
Public Hearing Sign-In**

August 18, 2009

	Name	Organization	Address	City	ZIP	Phone	E-mail
1	Donald Douglas		1345 Treasure Lane	White Heath	61884	687-2684	
2	Brent Buckalew		8 Welsh Cob	White Heath	61884	687-4085	
3	K.E. Wittrock		1364 Treasure Lane	White Heath	61884	687-2868	
4	Peggy Currid		21 Riverview	White Heath	61884	687-4146	currid@gmail.com
5	Glen Parker		2171 Railroad St	Lodge	61856	762-2678	
6	Mark Heimburger		21 Riverview	White Heath	61884	687-4146	
7	John N. Stolla, Jr.		1019 Bucks Pond Road	Monticello	61856	778-6658	
8	Alice Ore		1352 Treasure Lane	White Heath	61884	687-2786	
9	Fred Ore		1352 Treasure Lane	White Heath	61884	687-2786	
10	Sally Nolan		1076 IL Rt 10	Monticello	61856	762-7791	
11	Richard Manuel		3094N 1300 E Rd	Mansfield	61854		
12	Shirley Sharp		2163 Wagon Trail Road	White Heath	61884		
13	Sheila Maloney		4 Welsh Cob	White Heath	61884	687-4180	
14	Marie Fiedler		23 Riverview	White Heath	61884		
15	R. Iderger		Box 141	Argenta	62501		
16	Shirley Hill	Sangamon Township Supervisor	2202 Wagon Trail Rd	White Heath	61884	621-8171	whirlgirl50@sbcglobal.net
17	Mark Ekbert		4 Welsh Cob	White Heath	61884	687-4180	
18	Stacy Bradshaw	Piatt County Farm Bureau	PO Box 223	Monticello	61856	762-2128	dietz@piattms.com
19	Gary Gonzini		1078 IL Rt 10	Monticello	61856	649-4908	glgonzini@harffiones.com
20	Anne Reeser		208 Kipling	Monticello	61856	762-5835	areeser@peoplepc.com

**Piatt County Regional Planning Commission
Public Hearing Sign-In**

August 18, 2009

	Name	Organization	Address	City	ZIP	Phone	E-mail
21	Frank Carlisle	UIUC	1277 E IL Rt 10	White Heath	61884	772-0601	
22	Sam Elson	UIUC	63 Glenn Dr	White Heath	61884	687-4081	
23	Michelle Hansen	Piatt Journal Republican		Monticello	61856	762-2511	
24	Tina Klebek		1371 Treasure Lane	White Heath	61884	687-2626	
25	Chuck Burmeister		1371 Treasure Lane	White Heath	61884	687-2626	
26	Joseph T Houska		1365 Treasure Lane	White Heath	61884	687-2604	
27	Lee Ann Rotz		2186 Wagon Trail Rd	White Heath	61884	687-4250	
28	Michael Workman		42 Glenn Dr	White Heath	61884	687-4089	mwrkmn33@aol.com
29	Laura Workman		42 Glenn Dr	White Heath	61884	687-4089	mwrkmn33@aol.com
30	Kenneth Aronson		2194 Wagon Trail Rd	White Heath	61884	687-4687	karonson@hughes.net
31	Sandra Hardin		5 Welsh Cob	White Heath	61884		sghardin@hotmail.com
32	Roberta Hardin		2167 Center St	Lodge	61856	762-2065	
33	Wayne Winston		5001 Surrey Rd	Monticello	61856	762-9758	wayne@weelee.net
34	Alan Fletcher		52 Glenn Drive	White Heath	61884		aandkfletch@yahoo.com
35	Kathryn Fletcher		52 Glenn Drive	White Heath	61884		aandkfletch@yahoo.com
36	Barry Allison		2139 N 1275 E	White Heath	61884	687-4099	
37	Delores Paul		1428 E IL Rt 47	Seymour	61875	687-2850	
38	Patti Silver		1371 E 2250 N Rd	White Heath	61884	687-2746	
39	Ann Wilson		2124 N 1300 E Rd	White Heath	61884	687-4004	
40	Margaret Bateman		1370 E 1800 N	Monticello	61856	762-3229	

**Piatt County Regional Planning Commission
Public Hearing Sign-In**

August 18, 2009

	Name	Organization	Address	City	ZIP	Phone	E-mail
41	Donna Caldwell		253 S Moreland	Decatur	62521	454-8411	
42	Tom Burtness	Wagon Trail Rd HOA	2195 Wagon Trail Rd	White Heath	61884	687-4450	
43	Mark Yarbrough		4 Hickory Ln	White Heath	61884	649-9162	
44	Dean Beazly		1107 E 3000 N Rd	Mansfield	61854	899-1438	
45	Jeff Harshbarger		1484 E 325 N Rd	Atwood	61913	578-3114	
46	Grace Harshbarger		1484 E 325 N Rd	Atwood	61913	578-3114	
47	Kim File		2180 Wagon Trail Rd	White Heath	61884	687-4063	afile@illinois.edu
48	Allan File		2180 Wagon Trail Rd	White Heath	61884	687-4063	allan.file@carle.com
49	Polly Hill		2200 Wagon Trail Rd	White Heath	61884	687-5081	hillpo@champaignschools.org
50	Michael Novak		2186 Wagon Trail Rd	White Heath	61884	687-4250	noropro@gmail.com
51	Kevin Noland		2122 N 1300 East	White Heath	61884	687-2866	KLN2122@yahoo.com
52	Debbie Harper		14 Sand Lake Rd	Monticello	61856	762-8688	zoey23@pdnt.com
53	Jack Harper		14 Sand Lake Rd	Monticello	61856	762-8688	zoey23@pdnt.com
54	Jim Brewer		53 Glenn Dr	White Heath	61884	687-2756	
55	Joan Villa		5 Paradise Ln	White Heath	61884	687-4510	joanvenice@aol.com
56	Lee Winston-Wright		1005 Surrey Rd	Monticello	61856	762-9758	lee@weelee.net
57	Sharon Martin	Piatt County Board	2244 Wagon Trail Rd	White Heath	61884	687-2628	
58	John Lyons	Piatt County Board, PCRPC	231 N Main	Atwood	61913	578-3142	
59	Dick Wilkin	Piatt County Board, PCRPC	502 E Washington	Monticello	61856		
60	Sandy Manuel	PCRPC	3094N 1300 E Rd	Mansfield	61854		

Piatt County Regional Planning Commission
Public Hearing Sign-In

August 18, 2009

	Name	Organization	Address	City	ZIP	Phone	E-mail
61	Jonathon Manuel	PCRPC	2 Village Road	Mansfield	61854	722-5399	
62	Paul Quick	PCRPC	211 W Locust	Atwood	61913	578-2562	
63	Randy Keith	PCRPC	2084 Shady Rest Rd	Monticello	61856	762-2228	
64	David Sherman	PCRPC	110 W South St	Mansfield	61854	489-2091	
65	Paul Doane	PCRPC	1184 E IL Rt 10	Monticello	61856	493-7702	
66	Joann Shafer	PCRPC	245 Dodge, PO Box 152	Cisco	61830	669-2216	
67	Dale Allen	PCRPC	401 Western	Deland	61839	664-3675	
68	Jim Reed	PCRPC	741 E 1950 N	Monticello	61856		

