

Minor Amendments to *LRMP (Volume 1) Existing Conditions and Trends Report*, approved 4/18/2013

1) Update the Best Prime Farmland definition.

a) Add the following text on page 10-21:

The County Board adopted Ordinance No. 914 on November 27, 2012 to amend the definition of ‘Best Prime Farmland’ as per the March 7, 2012 recommendation of the LESA Update Committee, and following a public hearing at the Champaign County Zoning Board of Appeals. The amended definition of Best Prime Farmland is as follows:

“Prime Farmland Soils identified in the Champaign County Land Evaluation and Site Assessment (LESA) System that under optimum management have 91% to 100% of the highest soil productivities in Champaign County, on average, as reported in the Bulletin 811 Optimum Crop Productivity Ratings/or Illinois Soils. Best Prime Farmland consists of the following:

- a) Soils identified as Agriculture Value Groups 1, 2, 3 and/or 4 in the Champaign County LESA System;
- b) Soils that, in combination on a subject site, have an average LE of 91 or higher, as determined by the Champaign County LESA System; or
- c) Any development site that includes a significant amount (10% or more of the area proposed to be developed) of Agriculture Value Groups 1, 2, 3 and/or 4 soils, as determined by the Champaign County LESA System.”

b) Replace Table 10-1 on page 10-21 with the following:

Table 10-1: Composition of Agriculture Value Groups which Comprise Best Prime Farmland

Agriculture Value Group ¹	Soils in Champaign County	Relative LE Score ²	Approximate Percentage of County Soils
1	154A Flanagan, 198A Elburn, 149A Brenton	100	21.1
2	152A Drummer, 679B Blackberry	100	40.6
3	171B Catlin, 153A Pella, 623A Kishwaukee, 481A Raub	94	7.8
4	663B Clare, 67A Harpster, 234A Sunbury, 56B Dana, 219A Millbrook, 490A Odell, 687B Penfield, 125A Selma	91	6.8

Table 10-1 Notes:

- 1. The Land Evaluation (LE) portion of the Champaign County Land Evaluation and Site Assessment System places the soils of Champaign County into several ‘Agriculture Value Groups’ ranging from the best to the worst, based on three soils classifications systems: ‘Land Capability Classification’ and ‘Farmland Classification’ of the USDA NRCS National Soils Survey Handbook, and the Productivity Index of Illinois Soils Under Optimum Management based on Bulletin 811 updated January, 2011.
- 2. LE is the weighted, average designated Land Evaluation score assigned to each Agriculture Value Group.

County Board Resolution 8470

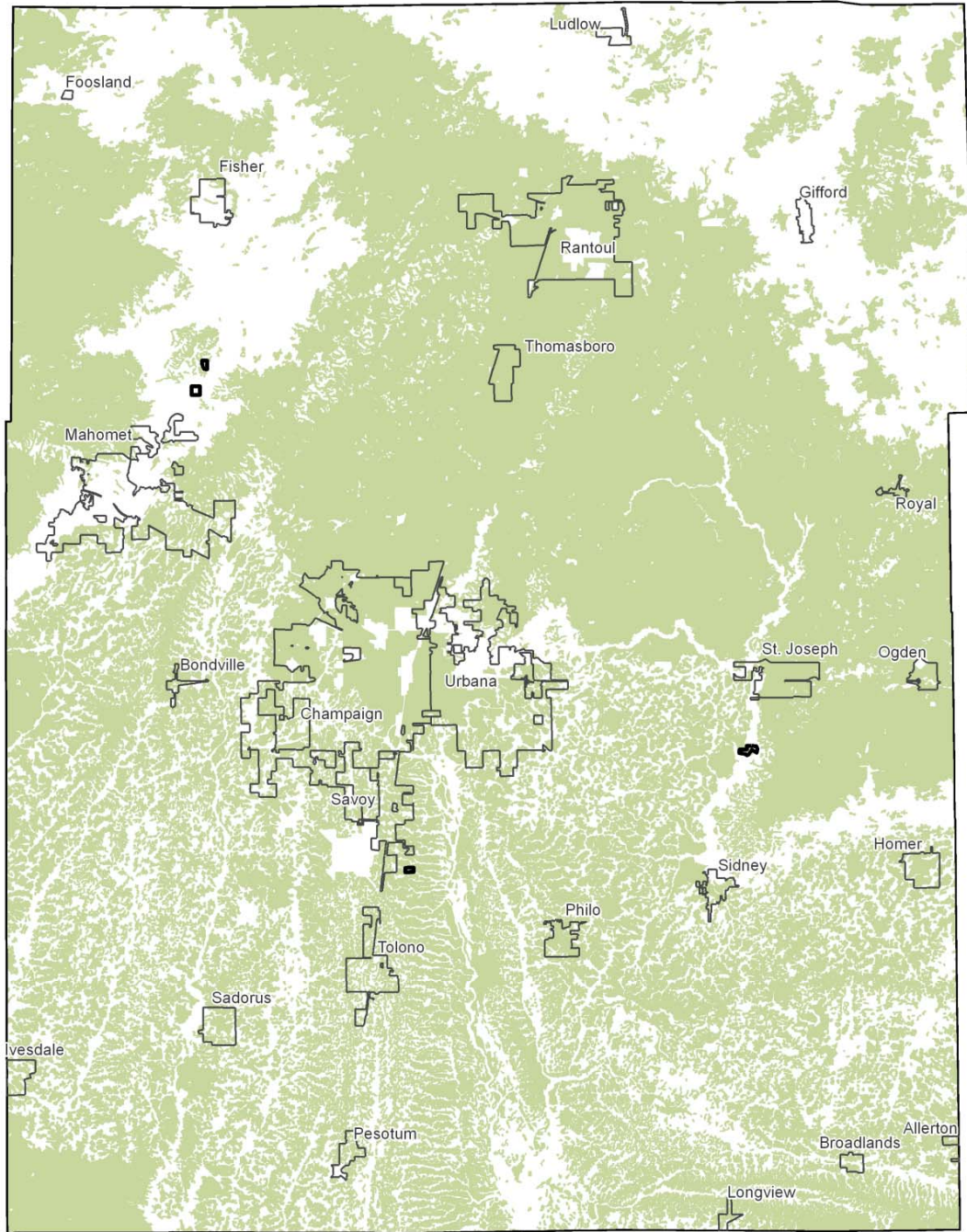
c) Replace text which precedes Figure 10-16 with the following text:

Figure 10-16 displays areas of 'Best Prime Farmland' soils in the County, consisting of soils in Agriculture Value Groups 1 - 4 as listed in Table 10-1. In Champaign County, 'Best Prime Farmland' soils comprise approximately 77 percent of the total land area.

- continued on following page -

d) Replace Figure 10-16 on page 10-22

Figure 10-16: Champaign County Soils



Farm Soils
Champaign County

Legend

- Land Evaluation Site Assessment (LESA) Rating
- Best Prime Farmland
 - Municipal Boundary



0 2.5 5 Miles

Date Map Prepared:
March 26, 2013