



7a.

# Minutes

03.25.2021

Regular Commission  
Meeting

**Regular Commission  
Meeting Thursday,  
March 25, 2021  
5:00 p.m.**

The Cibola County Commission held a Regular Meeting on Thursday March 25<sup>th</sup>, 2021 at 5:00 pm in the Cibola County Commission Center

**Elected Officials Present Staff**

Daniel Torrez, Chairman

Martha Garcia, 1<sup>st</sup> Vice Chairman

Christine Lowery, 2<sup>nd</sup> Vice Chairman

Robert Windhorst, Commissioner

Ralph Lucero, Commissioner

Kate Fletcher, County Manager

Paul Ludi, Finance Director

Michelle Dominguez, County Clerk

Marisa Baca, Filing/Recording

**1. Call to Order.**

1<sup>st</sup> Vice Chairman Garcia called the meeting to order at 5:00pm

**2. Roll Call**

4 - Present 1 – Absent Commissioner Torrez

**3. Pledge of Allegiance**

Led by Commissioner Lucero

**4. Prayer**

Led by Commissioner Lowery

**5. Approval of Agenda**

Motioned to approve by Commissioner Lucero.

Seconded by Commissioner Windhorst.

With the changes to order of agenda switch # 9 moved to #8. Reports changed B to A, A to B, C remains.

**6. Public Comment –**

None

**7. Minutes**

- a. Minutes from March 25<sup>th</sup>, 2020 Regular Commission Meeting

Motion to approve made by Commissioner Lucero.

Seconded by Commissioner Garcia - 5 affirmative

**8. Presentation**

- a. Budget and Finance Report- Kate Fletcher-County Manager & Paul Ludi-Finance Director

- b. Cibola General Hospital Bi-Annual Report-Thomas Whelan-Hospital C.E.O.

- c. Emergency Manager Report- Dustin Middleton

## 9. Reports

- a. NWNM Council of Governments (COG)-Evan Williams-NWNMCOG Director
- b. Budget and Finance Report- Kate Fletcher-County Manager & Paul Ludi-Finance Director
- c. Planning Department Presentation -Anna Larson-Planner

## 10. New Business – Action May Be Taken

- a. Consideration of Plat Vacation of Private Road Easement and Relocation of this easement For NextEra Solar Facility located near San Fidel in Cibola County
- b. Consideration of RFP 2021-004 Selection of Trail Construction Firm for Quartz Hill in Zuni Mountain Trails project.

Table- set as a special commissioner meeting set for a Tuesday or Thursday.  
Motioned by Commissioner Lucero, Seconded by Commissioner Lowery  
4 – Affirmative

- c. Consideration of Resolution 21-23 FY21 Budget Adjustment No. 7  
Motion to approve made by Commissioner Lucero.  
Seconded by Commissioner Lowery - 4 Affirmative
- d. Consideration of Formal Request to Governor Lujan Grisham to Veto HB  
Motion to approve made by Commissioner Lucero.  
Seconded by Commissioner Windhorst - 4 Affirmative
- e. Consideration to approve requisitions over \$20,000
  - a. Laguna Fire Protection Program-Utility Pickup Truck-Melloy Dodge-\$22,012.00
  - b. Road Dept.-Tools and Supplies -Grants Auto and Truck Parts-\$23,312.40Motion to approve made by Commissioner Lucero.  
Seconded by Commissioner Windhorst - 4 Affirmative
- f. Consideration of Resolution 21-24 Transfer of Dump Truck to the Village of Milan.
- g. Consideration of Resolution 21-25 Transfer of Dump Truck to the Bluewater Village Water and Sanitation District

### **For f & g**

Motion to approve made by Commissioner Lucero.  
Seconded by Commissioner Windhorst - 4 Affirmative

## 11. Executive Session

Pursuant to Section 10-15-1 (H) (2) & (7) the following matter may be discussed in closed session:

- Motion and roll call vote to go into executive session and that, pursuant to New Mexico State Statute Section 10-15-1, only the following matters will be discussed in closed session:

Motion to approve Executive Session made by Commissioner Windhorst.  
Seconded by Commissioner Lowery – 4 Affirmative

- a. Pending or threatened Litigation 10-15-1 (H) (7)
- b. Personal 10-15-1 (H) (2)
  - a. Kate Fletcher
- c. other Specific limited topics that are allowed or authorized under the state statute.

Motion and Roll Call Vote to Return to Regular Session made by Commissioner Lucero.  
Seconded by Commissioner Windhorst – 4 Affirmative

**12. New Business – Action May Be Taken**

- a. Directions to Staff Regarding Kate Fletcher-County Manager

Motion to approve made by Commissioner Windhorst.

Seconded by Lucero - 4 Affirmative

Motion to Set Special Commission Meeting Thursday April 5<sup>th</sup>, 2021.

Seconded by Commissioner Windhorst - 4 Affirmative

**13. Announcements**

The Next Regular Commission Meeting will be April 22<sup>nd</sup>, 2021 at 5:00p.m. via FB Live. The Cibola County Offices will be closed Friday, April 2<sup>nd</sup>, 2021 in observation of the Easter Holiday.

**14. Adjournment**

7:58pm



**PASSED, APPROVED, and ADOPTED** this 25<sup>th</sup> day of March 2021

BOARD OF COUNTY COMMISSIONERS

\_\_\_\_\_  
**Daniel Torrez, Chairman**

\_\_\_\_\_  
**Martha Garcia, 1<sup>st</sup> Vice Chairman**

\_\_\_\_\_  
**Christine Lowery, 2<sup>nd</sup> Vice Chairman**

\_\_\_\_\_  
**Ralph Lucero, Commissioner**

\_\_\_\_\_  
**Robert Windhorst, Commissioner**

**ATTEST:**

\_\_\_\_\_  
**Michelle E. Dominguez, Cibola County Clerk**

**Date:** \_\_\_\_\_

**SEAL**



7b.

# Minutes

04.0.2021

Special Commission  
Meeting

**Special Commission  
Meeting Thursday, April  
1, 2021  
5:00 p.m.  
Cibola County Commission Chambers**

**1. Call to Order**

Commissioner Torrez 5:00p.m.

**2. Roll Call**

5 – Present

**3. Pledge of Allegiance**

Commissioner Garcia

**4. Prayer**

Commissioner Lucero

**5. Approval of Agenda**

Motion to approve made by Commissioner Lucero.

Seconded by Commissioner Windhorst - 5 Affirmative

**6. New Business – Action May Be Taken**

- a. Consideration of Plat Vacation of Private Road Easement and Relocation of Easement for NextEra Solar Facility located near San Fidel in Cibola County

Motion to approve made by Commissioner Windhorst.

Seconded by Commissioner Lowery - 5 Affirmative

- b. Consideration of RFP 2021-004 Selection of Trail Construction Firm for Quartz Hill in Zuni Mountain Trails Project

Motion to approve made by Commissioner Lucero.

Seconded by Commissioner Windhorst - 5 Affirmative

- c. Consideration of Amendment to County Manager Contract

Motion to approve made by Commissioner Torrez.

Seconded by Commissioner Garcia - 5 Affirmative

**7. Executive Session**

None

**8. Announcements**

The Next Regular Commission Meeting will be April 22<sup>nd</sup>, 2021 at 5:00p.m. via FB Live. The Cibola County Offices will be closed tomorrow, Friday, April 2, 2021 in observation of the Easter Holiday.

**9. Adjournment**

5:15 p.m.

**PASSED, APPROVED, and ADOPTED** this 1<sup>st</sup> day of April 2021

BOARD OF COUNTY COMMISSIONERS

\_\_\_\_\_  
**Daniel Torrez, Chairman**

\_\_\_\_\_  
**Martha Garcia, 1<sup>st</sup> Vice Chairman**

\_\_\_\_\_  
**Christine Lowery, 2<sup>nd</sup> Vice Chairman**

\_\_\_\_\_  
**Ralph Lucero, Commissioner**

\_\_\_\_\_  
**Robert Windhorst, Commissioner**

**ATTEST:**

\_\_\_\_\_  
**Michelle E. Dominguez, Cibola County Clerk**

**Date:** \_\_\_\_\_

**SEAL**



8a.

# Budget and Finance Report

No Documentation



# Cibola County

## Commission Meeting

### April 22, 2021

Daniel Torrez, Chairman  
Martha Garcia, 1<sup>st</sup> Vice-Chair  
Christine Lowery, 2<sup>nd</sup> Vice Chair  
Robert Windhorst, Commissioner  
Ralph Lucero, Commissioner  
Kate Fletcher, County Manager





# Finance Report

As of March 31, 2021







# Cibola County Updates

- Finance Reports & Budgets located on Finance Department webpage
- Wendy Self in the Manager's Office is reconciled to the bank through February for Main Operating account and Christina Dominguez in the Treasurer's office has the Tax operating account reconciled through March.



- **Interim Budget Workshop for the public to be determined by Commission. This will be held via zoom and in the Commission Chambers. Limited in person capacity based on Governor's orders.**
- 3rd quarter report is ready to be submitted to DFA by April 30th along with needed budget adjustments. (Per approval this evening)
- The next scheduled investment meeting dates will be May 11th, August 10th, and November 9th of 2021.

IMPORTANT  
UPDATES



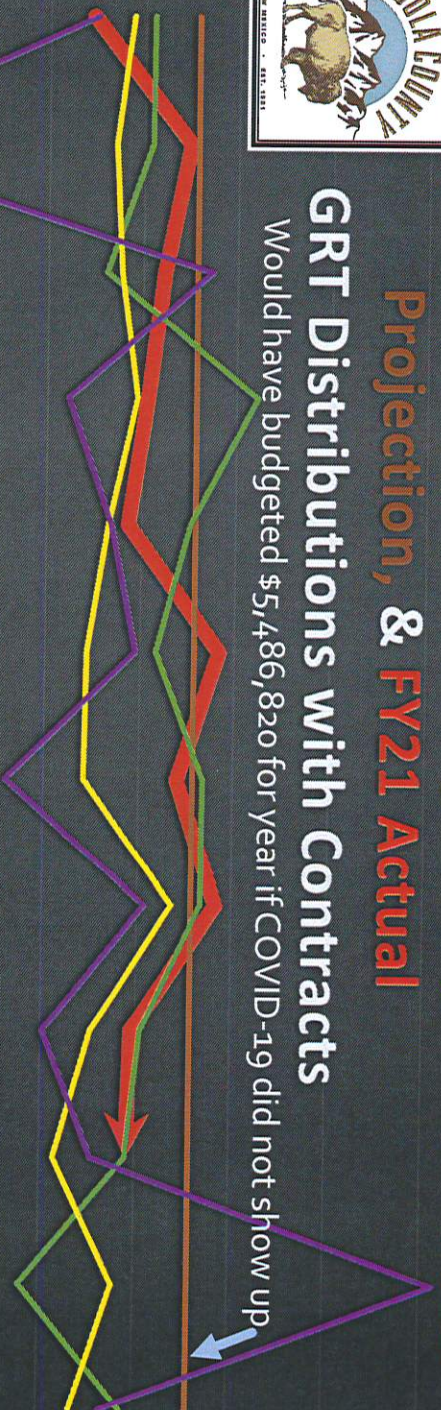
\$800,000  
\$700,000  
\$600,000  
\$500,000  
\$400,000  
\$300,000  
\$200,000  
\$100,000  
\$-

**FY 18, 19, 20 Actuals, FY 21 Projection, Normal FY21**



## Projection, & FY21 Actual GRT Distributions with Contracts

Would have budgeted \$5,486,820 for year if COVID-19 did not show up



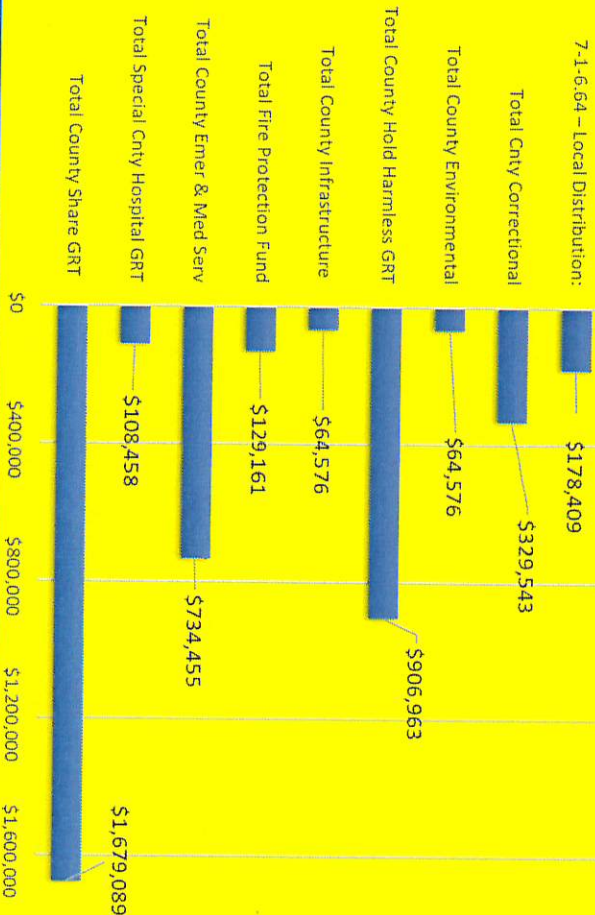
Instead, we budgeted \$1,830,672 (25% of regular projection) for fiscal year 2020-2021. We planned for the worst and are adjusting GRT as we gather data.

	July	August	September	October	November	December	January	February	March	April	May	June
2021 YTD Actuals	\$346,410	\$449,178	\$422,838	\$406,515	\$386,253	\$483,975	\$441,061	\$483,245	\$395,402	\$391,479		
2021 Proj. Budget w/out Reductions	\$457,235	\$457,235	\$457,235	\$457,235	\$457,235	\$457,235	\$457,235	\$457,235	\$457,235	\$457,235	\$457,235	\$457,235
2021 Projected Budget	\$152,556	\$152,556	\$152,556	\$152,556	\$152,556	\$152,556	\$152,556	\$152,556	\$152,556	\$152,556	\$152,556	\$152,556
2020 YTD Actuals	\$409,931	\$409,719	\$361,865	\$522,200	\$452,945	\$417,303	\$467,905	\$467,467	\$404,966	\$390,390	\$279,165	\$387,558
2019	\$388,766	\$370,384	\$377,648	\$395,792	\$366,307	\$344,509	\$341,921	\$436,280	\$353,013	\$314,669	\$378,007	\$334,204
2018	\$351,471	\$59,592	\$473,499	\$322,958	\$368,668	\$395,464	\$259,314	\$408,493	\$302,317	\$354,221	\$713,772	\$366,412





## GRT FY21 YTD Total - \$4,195,229



YTD GRT By Increment	YTD Total	July	August	September	October	November	December	January	February	March	April
Total County Share GRT	\$1,679,089	\$119,047.07	\$151,792.63	\$139,715.89	\$133,502.08	\$128,728.05	\$154,726.89	\$139,611.22	\$157,075.94	\$278,059.27	\$276,829.64
Total Special Cnty Hospital GRT	\$108,458	\$14,104.97	\$12,954.01	\$11,503.82	\$11,104.76	\$10,757.02	\$9,235.54	\$8,443.99	\$12,096.21	\$9,871.81	\$8,385.93
Total County Emer & Med Serv	\$734,455	\$60,614.04	\$79,707.97	\$73,321.66	\$70,398.07	\$67,889.81	\$83,525.04	\$75,619.24	\$85,356.47	\$69,249.54	\$68,772.73
Total Fire Protection Fund	\$129,161	\$8,628.83	\$15,525.52	\$13,722.87	\$13,720.95	\$10,002.58	\$23,529.73	\$22,171.21	\$19,244.98	\$673.29	\$1,940.94
Total County Infrastructure	\$64,576	\$4,314.29	\$7,762.53	\$6,861.47	\$6,860.48	\$5,001.39	\$11,764.46	\$11,085.53	\$9,618.61	\$336.76	\$970.42
Total County Hold Harmless GRT	\$906,963	\$91,462.21	\$120,392.15	\$111,128.55	\$106,101.90	\$102,270.43	\$125,399.33	\$113,333.54	\$125,529.60	\$6,859.09	\$4,486.35
Total County Environmental	\$64,576	\$4,314.29	\$7,762.53	\$6,861.47	\$6,860.48	\$5,001.39	\$11,764.46	\$11,085.53	\$9,618.61	\$336.76	\$970.42
Total Cnty Correctional	\$329,543	\$34,012.81	\$43,368.77	\$39,918.88	\$38,143.57	\$36,779.32	\$44,206.72	\$39,887.29	\$44,881.28	\$4,753.36	\$3,590.55
7-1-6-64 - Local Distribution:	\$178,409	\$9,911.60	\$9,911.60	\$19,823.19	\$19,823.19	\$19,823.19	\$19,823.19	\$19,823.19	\$19,823.19	\$19,823.19	\$19,823.19
TOTALS	\$4,195,229	\$46,410.11	\$49,177.71	\$42,857.80	\$40,515.48	\$38,253.18	\$48,975.36	\$41,060.74	\$48,244.89	\$38,963.07	\$38,770.17





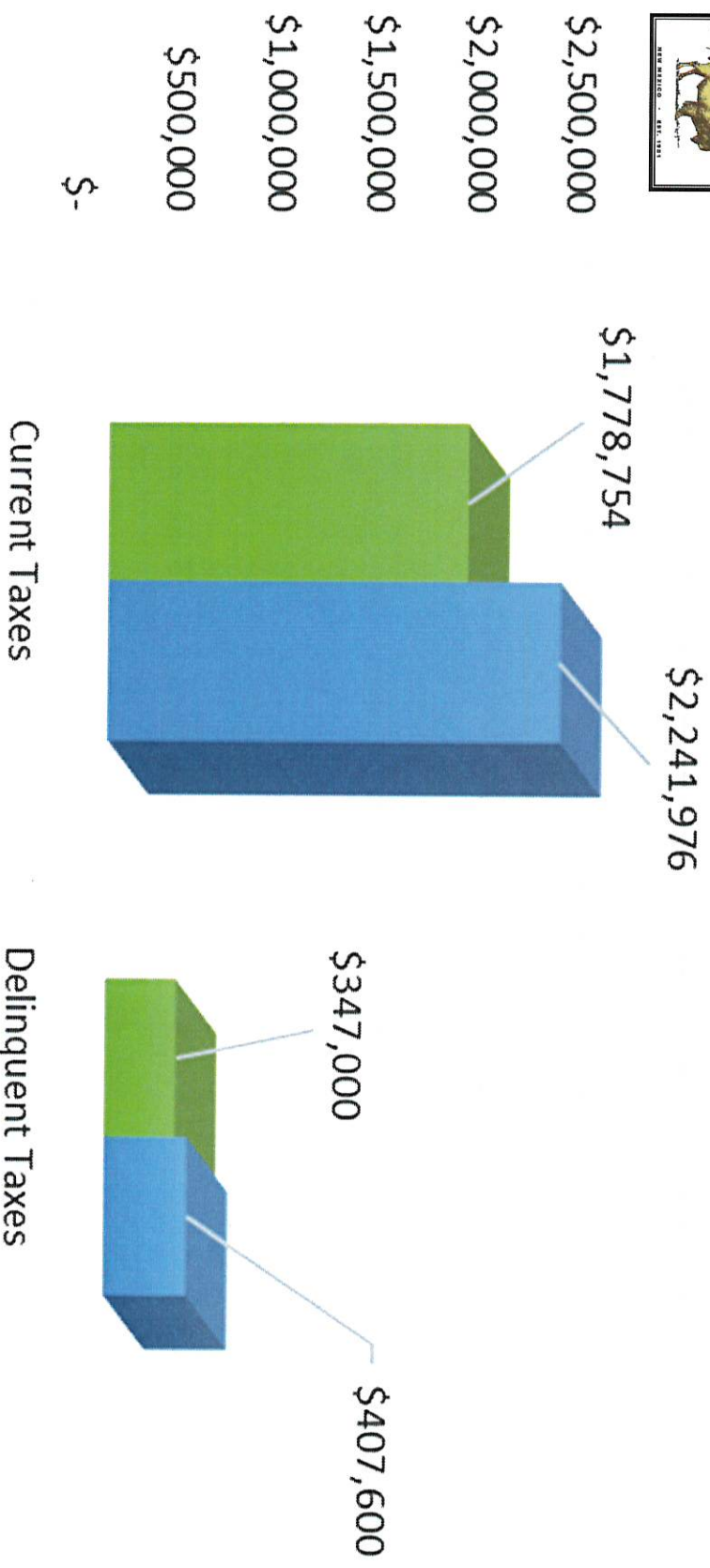
## Comparison of FY20 Net GRT including Contracts (Intercepts) and effects of COVID on FY21 GRT







## Property Tax Collections



■ 2021 Budget Projection

■ February 28, 2021 Actuals



## Cibola County Monthly Finance Report - As of March 31, 2021

Active Funds	Beginning Cash Balance as of 6/30	Beginning Investments as of 6/30/2020	YTD Revenues	YTD Transfers	YTD Expenditures	YTD Adjustments	Ending Cash & Investment Balances	Bond A, Bond B, General Fund & Road Reserves	Available Adjusted Ending Cash & Investment Balances
101 - INVESTMENT FUND	\$0.00	\$5,262,717.53	\$5,323.28	\$0.00	(\$264.68)	\$40,512.45	\$5,308,288.58	\$3,007,323.19	\$2,300,965.39
401 - GENERAL FUND	\$4,209,621.13	\$0.00	\$4,889,298.97	(\$1,831,502.91)	(\$4,645,716.00)	(\$191,934.88)	\$2,429,766.31	\$0.00	\$2,429,766.31
402 - ROAD	\$265,565.40	\$0.00	\$1,016,988.81	\$0.00	(\$1,241,154.50)	\$236.07	\$41,635.78	\$0.00	\$41,635.78
403 - FARM & RANGE	\$0.00	\$0.00	\$0.00	\$12,000.00	(\$11,051.55)	\$0.00	\$948.45	\$0.00	\$948.45
406 - INDIGENT	\$0.00	\$0.00	\$412,315.75	\$25,000.00	(\$337,685.98)	\$0.00	\$99,629.77	\$0.00	\$99,629.77
407 - SAN RAFAEL VFD	\$181,165.64	\$0.00	\$151,228.69	(\$86,201.00)	(\$87,310.46)	(\$24,744.91)	\$134,137.96	\$0.00	\$134,137.96
408 - BLUEWATER VFD	\$210,379.49	\$0.00	\$89,557.20	(\$18,448.00)	(\$24,435.15)	\$0.00	\$257,053.54	\$0.00	\$257,053.54
409 - LOBO CANYON VFD	\$163,845.09	\$0.00	\$2,909.00	\$97,292.00	(\$44,601.46)	\$0.00	\$219,444.63	\$0.00	\$219,444.63
413 - LAGUNA EMS	\$10,607.19	\$0.00	\$12,925.00	\$144.72	(\$23,676.91)	\$0.00	\$0.00	\$0.00	\$0.00
415 - PINEHILL EMS	\$1,241.02	\$0.00	\$10,091.00	\$0.00	(\$2,261.00)	\$0.00	\$9,071.02	\$0.00	\$9,071.02
416 - FENCE LAKE VFD	\$352,910.93	\$0.00	\$47,251.80	\$7,000.00	(\$56,232.84)	\$0.00	\$350,929.89	\$0.00	\$350,929.89
418 - CANDY KITCHEN VFD	\$129,897.14	\$0.00	\$75,306.00	(\$32,743.00)	(\$29,176.93)	\$0.00	\$143,283.21	\$0.00	\$143,283.21
419 - LAGUNA VFD	\$276,591.42	\$0.00	\$237,487.60	\$0.00	(\$112,778.46)	\$0.00	\$401,300.56	\$0.00	\$401,300.56
424 - CUBERO VFD	\$159,880.15	\$0.00	\$77,945.89	(\$6,620.00)	(\$40,241.54)	\$0.00	\$188,964.50	\$0.00	\$188,964.50
425 - CUBERO EMS	\$107.51	\$0.00	\$3,000.00	\$0.00	\$0.00	\$0.00	\$3,107.51	\$0.00	\$3,107.51
427 - EL MORRO VFD	\$211,833.27	\$0.00	\$47,251.80	\$7,000.00	(\$29,748.16)	\$289.50	\$236,626.41	\$0.00	\$236,626.41
428 - SUPERIOR AMBULANCE	\$503.91	\$0.00	\$14,562.00	\$0.00	(\$503.91)	\$0.00	\$14,562.00	\$0.00	\$14,562.00
435 - CONSOLIDATED DISPATCH	\$106,495.04	\$0.00	\$686,508.93	\$0.00	(\$638,870.87)	\$0.00	\$154,133.10	\$0.00	\$154,133.10
438 - DWI GRANT	\$8,376.44	\$0.00	\$226,602.00	\$8,376.44	(\$152,042.63)	\$0.00	\$213,042.65	\$0.00	\$213,042.65
439 - DWI DISTRIBUTION	\$130,106.84	\$0.00	\$0.00	\$0.00	\$0.00	\$0.00	\$0.00	\$0.00	\$0.00
440 - CDWI GRANT	\$0.00	\$0.00	\$131,119.90	(\$47,000.00)	(\$3,899.94)	\$0.00	\$736,556.01	\$0.00	\$736,556.01
475 - COUNTY FIRE PROTECTION	\$656,336.05	\$0.00	\$32,300.00	\$0.00	(\$52,134.62)	\$0.00	\$61,128.10	\$0.00	\$61,128.10
500 - CLERK RECORDING/FILING	\$80,962.72	\$0.00	\$57.46	(\$424,059.46)	\$0.00	\$7,590.00	\$0.00	\$0.00	\$0.00
504 - IGA-PASS THRU	\$0.00	\$416,412.00	\$621,930.82	\$0.00	(\$119,402.99)	\$0.70	\$705,922.96	\$0.00	\$705,922.96
569 - 2014B BOND INCOME FUND	\$203,394.43	\$0.00	\$1,387,651.30	\$0.00	(\$242,133.71)	\$0.00	\$1,645,517.59	\$0.00	\$1,645,517.59
570 - 2014B BOND INCOME FUND	\$500,000.00	\$0.00	\$988.82	\$99,720.00	(\$259,219.63)	(\$7,161.70)	\$159,898.13	\$0.00	\$159,898.13
575 - NMFA LOANS	\$0.00	\$325,570.64	\$0.00	\$0.00	(\$187.10)	\$0.00	\$785.00	\$0.00	\$785.00
603 - EMERGENCY MANAGEMENT	\$972.10	\$0.00	\$0.00	\$0.00	(\$141,365.68)	(\$0.02)	\$57,389.49	\$0.00	\$57,389.49
604 - FIRE MARSHAL	\$90,713.33	\$0.00	\$105,041.86	\$3,000.00	(\$14,802.11)	\$0.00	\$769.14	\$0.00	\$769.14
605 - LAW ENFORCEMENT PROTECTION	\$7,171.25	\$0.00	\$28,400.00	(\$20,000.00)	\$0.00	\$0.00	\$0.00	\$0.00	\$0.00
607 - QUARTZ HILL PROJECT	\$0.00	\$0.00	\$0.00	\$0.00	\$0.00	\$0.00	\$0.00	\$0.00	\$0.00
608 - CARES ACT PROGRAM	\$0.00	\$0.00	\$2,451,487.60	\$60,000.00	(\$2,348,445.46)	\$0.00	\$163,042.24	\$0.00	\$163,042.24
609 - CARES ACT ELECTION'S GRANT	\$0.00	\$0.00	\$284,011.25	\$0.00	(\$42,311.74)	\$0.00	\$241,699.51	\$0.00	\$241,699.51
610 - CENSUS BUREAU	\$53,556.59	\$0.00	\$0.00	\$0.00	(\$40,163.65)	(\$162.19)	\$23,230.75	\$0.00	\$23,230.75
611 - FOREST SERVICE GRANT	\$0.00	\$0.00	\$0.00	\$0.00	\$0.00	\$0.00	\$0.00	\$0.00	\$0.00
612 - NEW MEXICO CLEAN & BEAUTIFUL	\$0.00	\$0.00	\$1,429.46	(\$1,429.46)	\$0.00	\$0.00	\$0.00	\$0.00	\$0.00
614 - DETENTION CENTER	\$0.00	\$0.00	\$1,770,565.61	\$2,124,059.46	(\$3,074,838.25)	(\$491,683.28)	\$328,107.54	\$0.00	\$328,107.54
615 - COMPLIANCE PROGRAM	\$0.00	\$0.00	\$0.00	\$0.00	\$0.00	\$0.00	\$0.00	\$0.00	\$0.00
620 - 3% REAPPRAISAL FUND	\$244,296.81	\$0.00	\$83,879.00	\$0.00	(\$65,121.31)	\$0.00	\$263,054.50	\$0.00	\$263,054.50
651 - CAPITAL OUTLAY PROJECTS	\$0.00	\$0.00	\$34,070.11	\$32,787.65	(\$76,980.76)	(\$0.00)	\$9,877.00	\$0.00	\$9,877.00
TOTALS=	\$8,266,530.89	\$6,004,700.17	\$14,959,486.91	\$0.00	(\$13,960,755.88)	(\$667,058.26)	\$14,602,903.83	\$3,007,323.19	\$11,595,580.64





For your curiosity file!

## Monthly Multiple Choice



- How are local option taxes used by the County?
  - A – They are designated by Formal Resolution
  - B – They are designated by Ordinance
  - C – They aren't designated and can be used for anything
  - D - None of the above

TAXATION  
&  
REVENUE  
NEW MEXICO

Local Option GRT's are designated by the governing body through an ordinance. Recently the NM Taxation and Revenue Department (TRD) de-earmarked our County, Fire, Infrastructure, Hold Harmless, Environmental and Correctional GRT. We still need to follow the county ordinances though so we are continuing to do this.



ENTITY NAME: Cibola County  
 FISCAL YEAR: FY 2020-21  
 RESOLUTION #: 21-26  
 BAR SCHEDULE: 21-26A

# BAR #8 Schedule 21-26A – Resolution 21-26

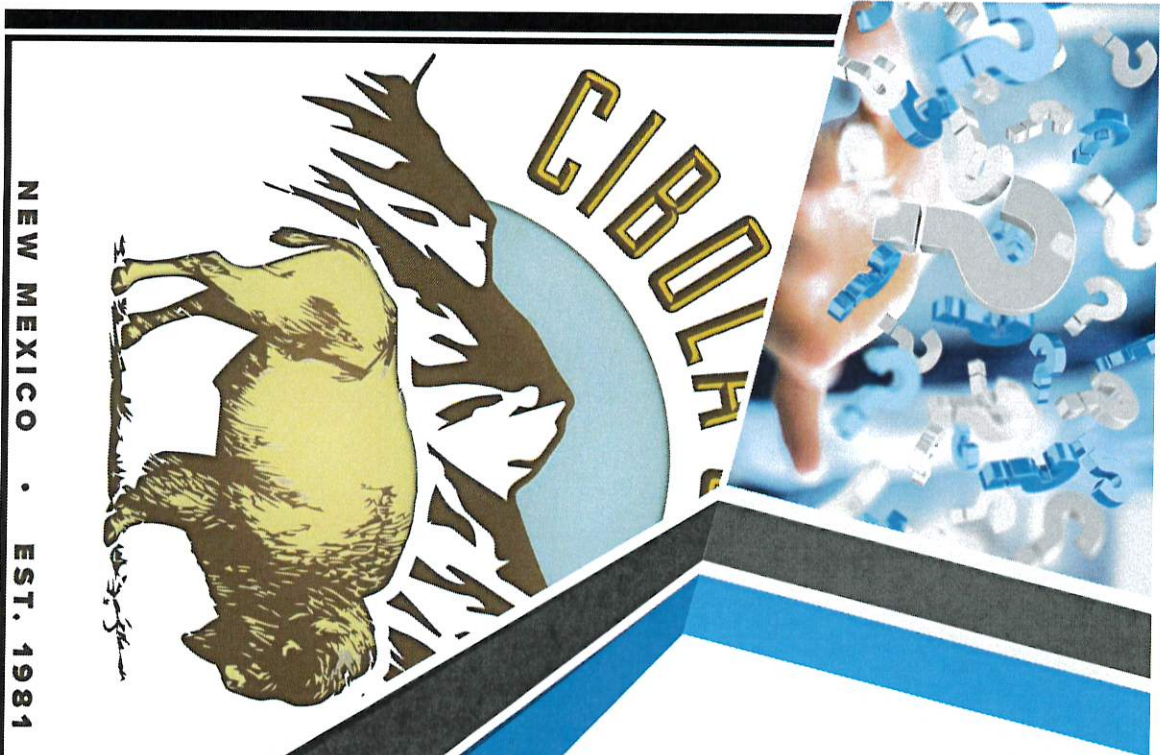


BAR LOCAL (L) OR STATE (S)	COUNTY DEPARTMENT	REVENUE EXPENDITURE (TO or FROM)	DFA ACCOUNT #	CIBOLA COUNTY ACCOUNT #	DESCRIPTION OF ACCOUNT	APPROVED BUDGET	ADJUSTMENT	ADJUSTED BUDGET	PURPOSE
L	IT	Expenditure		401-004-412-00098	Training & Staff Development	\$3,200.00	(\$3,200.00)	\$0.00	Reduce to realign budget authority to accounts below
L	IT	Expenditure		401-004-412-00013	Rental of Equipment	\$1,700.00	\$854.28	\$2,554.28	Copier lease higher than planned for
L	IT	Expenditure		401-004-412-00009	Office Equipment & Supplies	\$500.00	\$2,345.72	\$2,845.72	Need to get Label writer and labels
S	Fire Marshal	Expenditure		604-018-461-00082	Safety Equipment	\$5,000.00	\$10,000.00	\$15,000.00	Need increase for additional PPE
L	Fire Marshal	Expenditure		604-018-461-00069	Dues Fees & Subscriptions	\$10,000.00	(\$2,000.00)	\$8,000.00	Reduce to realign budget authority to other account
L	Fire Marshal	Expenditure		604-018-461-00009	Office Supplies	\$12,000.00	\$2,000.00	\$14,000.00	Increase for additional routine supplies.
L	Sheriff	Expenditure		401-005-408-00098	Training & Staff Development	\$13,750.00	(\$8,286.00)	\$5,464.00	Reduce to realign budget authority to other accounts
L	Sheriff	Expenditure		401-005-408-00010	Mileage & Per Diem	\$5,000.00	(\$3,000.00)	\$2,000.00	Reduce to realign budget authority to other accounts
L	Sheriff	Expenditure		401-005-408-00005	Overtime Salaries	\$90,000.00	(\$20,724.00)	\$69,276.00	Reduce to realign budget authority to other accounts
L	Sheriff	Expenditure		401-005-408-00012	Equipment Maintenance & Repair	\$2,500.00	\$10.00	\$2,510.00	Went over account by \$10
L	Sheriff	Expenditure		401-005-408-00013	Rental of Equipment	\$5,000.00	\$2,000.00	\$7,000.00	Need increase for additional repair supplies. Repeater service used most of the budget
L	Sheriff	Expenditure		401-005-408-00072	Law Enforcement Liability Ins.	\$185,000.00	\$27,000.00	\$212,000.00	Underbudgeted this account
L	Maintenance	Expenditure		401-005-408-00124	Contractual Services	\$0.00	\$3,000.00	\$3,000.00	Needed to pay extra for additional claims
L	Maintenance	Expenditure		401-010-403-00012	Equipment Maintenance & Repair	\$94,175.00	(\$10,000.00)	\$84,175.00	Reduce to realign budget authority to other account
L	Maintenance	Expenditure		401-010-403-00046	Janitorial Supplies	\$20,000.00	\$10,000.00	\$30,000.00	Increase for additional routine supplies due to covid cleaning
S	Bluewater VFD	Expenditure		408-018-422-00012	Equipment Maintenance & Repair	\$7,500.00	\$2,500.00	\$10,000.00	Fixing trucks and gear
L	Treasurer	Expenditure		408-018-422-00025	Utilities	\$8,500.00	\$3,500.00	\$12,000.00	Increased costs not budgeted for addition
L	Treasurer	Expenditure		401-004-406-00009	Office Equipment & Supplies	\$15,000.00	(\$1,000.00)	\$14,000.00	Reduce to realign budget authority to other account
L	Treasurer	Expenditure		401-004-406-00006	Postage	\$10,500.00	\$1,000.00	\$11,500.00	Increase postage for delinquent Tax notice mailing
L	Treasurer	Expenditure		401-004-406-00010	Mileage & Per Diem	\$6,000.00	(\$1,500.00)	\$4,500.00	Reduce to realign budget authority to other account
L	Treasurer	Expenditure		401-004-406-00008	Printing & Publishing	\$10,500.00	\$1,500.00	\$12,000.00	Increase printing for delinquent Tax notice mailing
L	Road	Expenditure		402-015-416-00010	Mileage & Per Diem	\$1,000.00	(\$4,500.00)	\$0.00	Reduce to realign budget authority to other account
L	Road	Expenditure		402-015-416-00024	Grounds Maintenance & Imp.	\$4,500.00	(\$6,000.00)	\$0.00	Reduce to realign budget authority to other account
L	Road	Expenditure		402-015-416-00075	Equipment Repairs	\$50,000.00	(\$6,000.00)	\$44,000.00	Reduce to realign budget authority to other account
L	Road	Expenditure		402-015-416-00076	Equipment Operations Expense	\$85,000.00	(\$5,500.00)	\$79,500.00	Reduce to realign budget authority to other account
L	Road	Expenditure		402-015-416-00098	Training & Staff Development	\$1,000.00	(\$1,000.00)	\$0.00	Reduce to realign budget authority to other account
L	Road	Expenditure		402-015-416-00127	Uniforms	\$4,000.00	(\$4,000.00)	\$0.00	Reduce to realign budget authority to other account
L	Road	Expenditure		402-015-416-00077	Tools & Supplies	\$10,000.00	\$22,000.00	\$32,000.00	To purchase county tools for mechanics
S	General Fund	Transfer		401-011-499-00413	From 401 to 413	\$0.00	\$144.72	\$144.72	Temporary Loan from general fund to cover deficit. Will reimburse GF when distribution comes in.
S	Laguna EMS	Transfer		413-021-499-00401	From 401 to 413	\$0.00	\$144.72	\$144.72	Temporary Loan from general fund to cover deficit. Will reimburse GF when distribution comes in.
L	Quartz Hill	Expenditure		607-045-456-00101	Professional Services	\$263,500.00	(\$233,500.00)	\$30,000.00	Align budget to be more accurate with description
L	Quartz Hill	Expenditure		607-045-456-00301	Labor	\$87,000.00	(\$87,000.00)	\$0.00	Align budget to be more accurate with description
L	Quartz Hill	Expenditure		607-045-456-00302	Materials	\$267,000.00	(\$248,100.00)	\$8,900.00	Align budget to be more accurate with description
L	Quartz Hill	Expenditure		607-045-456-00303	Equipment	\$87,000.00	(\$87,000.00)	\$0.00	Align budget to be more accurate with description
L	Quartz Hill	Expenditure		607-045-456-00607	Construction	\$0.00	\$655,600.00	\$655,600.00	Align budget to be more accurate with description



# The End

## Questions?



NEW MEXICO • EST. 1981



# As of March 31, 2021, Finance Report

## Slide Outline and Notes of Cibola County Finance Report

### 1. Commission Meeting April 22, 2021

### 2. Finance Report Cover Page

### 3. Cibola County Updates

- a. Finance Reports & Budgets located on Finance Department webpage
- b. Wendy Self in the Manager's Office is reconciled to the bank through February for Main Operating account. We are experiencing a small hold up for March's reconciliation due to how are GRT is being reported by the state in their RP-500 reports. I will discuss this further on our breakdown of GRT's. Christina Dominguez in the Treasurer's office has the Tax operating account reconciled through March. Great job to both of them.
- c. Interim Budget meetings have been going on with all Departments and commissioners (2 at a time or by themselves to avoid quorum). So now we are ready to hold a public budget workshop to:
  - i. 1. Hold a budget 101 meeting to help the public understand the different funds, factors, projections, etc. before reviewing the interim budget.
  - ii. 2. Review the interim budget with the public so they may give input on the interim budget to myself, the County Manager and Commissioners. (A quorum may occur but no action will be taken)
  - iii. Stand for questions. This budget is due on or before June 1<sup>st</sup>.
- d. Our first and second quarter financial reports were approved by the state on March 11, 2021. Our 3<sup>rd</sup> quarter report is ready to be submitted on time by March 31<sup>st</sup> along with needed budget adjustments. Just a heads up to the commissioners, I wanted to share with you how our quarterly recap will look when submitted to DFA. They have many requirements that actually alter the reporting from what we give the governing body.
  - i. They rounded the cash balances up to the nearest dollar.
  - ii. If mistakes are made to cash when the budget is approved you are stuck for the rest of the year misreporting those balances although you can adjust your ending cash to be right through the adjustment column.
  - iii. Also, you need to report investments as they are of the date of the report which forces counties to reduce year to date interest income and fees which ultimately changes our reported revenues and expenditures.
- e. The next scheduled investment meeting dates will be May 11<sup>th</sup>, August 10<sup>th</sup>, and November 9<sup>th</sup> of 2021.

### 4. GRT Tracker

- a. Here is our Gross Receipts history and the red line designates this fiscal year's GRT.
- b. Our budgeted projection is that straight blue line and we budgeted at 25% due to COVID-19 unknowns to ensure we could cover this fiscal year expenditures without furloughs to County employees. We would have budgeted a 2-year average shown in the straight brown line but then again because of COVID-19 there are too many uncertainties with closing of businesses, schools, and tourism. We can adjust this as we go through the year so please remember this is not set in stone and the budget is a living document.
- c. The other lines represent the last 3 years as you can see in the legend.
- d. Contracts for solid waste are added back in these numbers because they never hit our coffers as they are taken straight off the top from the state and go to pay for our solid waste. The contracts are our Environmental GRT and I wanted them to be represented.
- e. COVID-19 has not impacted GRT, knock on wood, but we are closely monitoring it.

## **5. GRT Breakdown**

We must use our local option taxes for how they are dedicated per the County's ordinances. In March the NM Taxation and Revenue Department (TRD) started to de-earmark and consolidate our local options (highlighted in yellow). Although TRD has de-earmarked the allowable uses of the highlighted taxes we still need to follow our ordinances. This is causing a reconciliation issue for now as we need to determine how these taxes need to be re-earmarked per our ordinances. This should be resolved by the next commission meeting.

Here is how our GRT is spent.

- a. The Correctional GRT is dedicated to our inmate costs in the Detention Fund.
- b. The Environmental GRT pays the Northern New Mexico solid waste authority.
- c. The Hold Harmless is dedicated to paying our Series 2014A Bonds which built the detention center and a portion also goes to the road fund.
- d. The County Infrastructure is dedicated for general purposes in the general fund.
- e. The Fire Protection GRT is dedicated in our County Fire Protection Fund.
- f. Our County Share GRT is split to 3 funds. Our Indigent Fund, 2014 B Bond Fund, and general fund.
- g. The Special County Hospital GRT is a residual type of GRT from when hospital tax was enacted made up of the medical and food hold harmless tax distribution. When the tax increment deactivated the hold harmless portion stayed. It is used in our general fund.
- h. The County Emergency and Medical Services GRT is dedicated to our E-911 program in the consolidated dispatch fund.
- i. The 7-1-6.64 – Local Distribution was passed by state legislators and is used for general purposes in the General Fund. This is temporary and is not a local option tax approved by the County's governing body.

## **6. GRT Comparison**

- a. Here is a comparison of how The Village, the City and County are faring with GRT. The red line shows where we started tracking the county and surrounding areas. GRT has been sustaining for all entities. Great news.

## **7. Property Tax**

- a. We are currently budgeted at 50% of what we normally would have projected due to COVID-19. Again, as we do better we will adjust the budget. Current and delinquent taxes are coming in strong. I will create a budget adjustment next month to increase our budgeted revenue amounts.

## **8. Monthly Report**

- a. Here is our March 31 monthly financial report. As you can see we are maintaining our investments and required reserves but new information came to light and Wells Fargo made a business decision and moved the rates to standard rates for the tax account and our operating account and new charges during tax season occurred for the lock boxes. We keep all our bond and state reserves in our investment fund. We are looking into see if these new charges can be waived like before or if we need to find another bank to do business with other Wells Fargo.
- b. Our General Fund cash balance is quite strong. We have \$2.4 million in the bank for our general fund as of March 31st. This is general purpose operating cash on hand above our investments.
- c. We do currently have one fund deficit. In Laguna EMS and a budget adjustment will be recommended later in this meeting. Apparently they spent more than what they had due to some direct payables getting by before they were caught them. We have stopped all payments and have notified Laguna not to use their EMS funds anymore.
- d. Our transfers equal zero which is mandatory.

- e. FYI, This recap is developed using three reports.
  - i. The pooled cash report gives what our beginning and ending cash balances should be.
  - ii. The Detail Vs. Budget report gives the revenue, transfer, and expenditure activity.
  - iii. The balance sheets for this give us our adjustments to get from pooled cash to pooled cash. The adjustments are basically the 6/30 assets other than cash minus 6/30 Liabilities plus 12/31 assets other than cash minus 12/31 liabilities. Basically it's the changes in accounts receivables and accounts payables from the beginning of the year to now.
- f. The county is in great fiscal shape.

**9. Monthly Multiple Choice – NEW!!!**

- a. How are local option taxes used by the County?
  - i. A – They are designated by Formal Resolution
  - ii. B – They are designated by Ordinance
  - iii. C – They aren't designated and can be used for anything
  - iv. D - None of the above
- b. Answer – B – They are designated by County Ordinance
- c. Local Option GRT's are designated by the governing body through an ordinance. Recently the NM Taxation and Revenue Department (TRD) de-earmarked our County, Fire, Infrastructure, Hold Harmless, Environmental and Correctional GRT. We still need to follow the county ordinances though so we are continuing to do this.

**10. Budget Adjustments #8**

- a. Here we have Budget Adjustment #8. Justifications are provided on the right of the schedule. I recommend approval of these adjustments.

**11. The End – Questions from governing body**



8b.

# Assessor's Annual Report

Reappraisal Plan



# County Assessor's 2021 Annual Report



Dolores Vallejos  
Assessor

Jenna Rodriguez  
Deputy Assessor



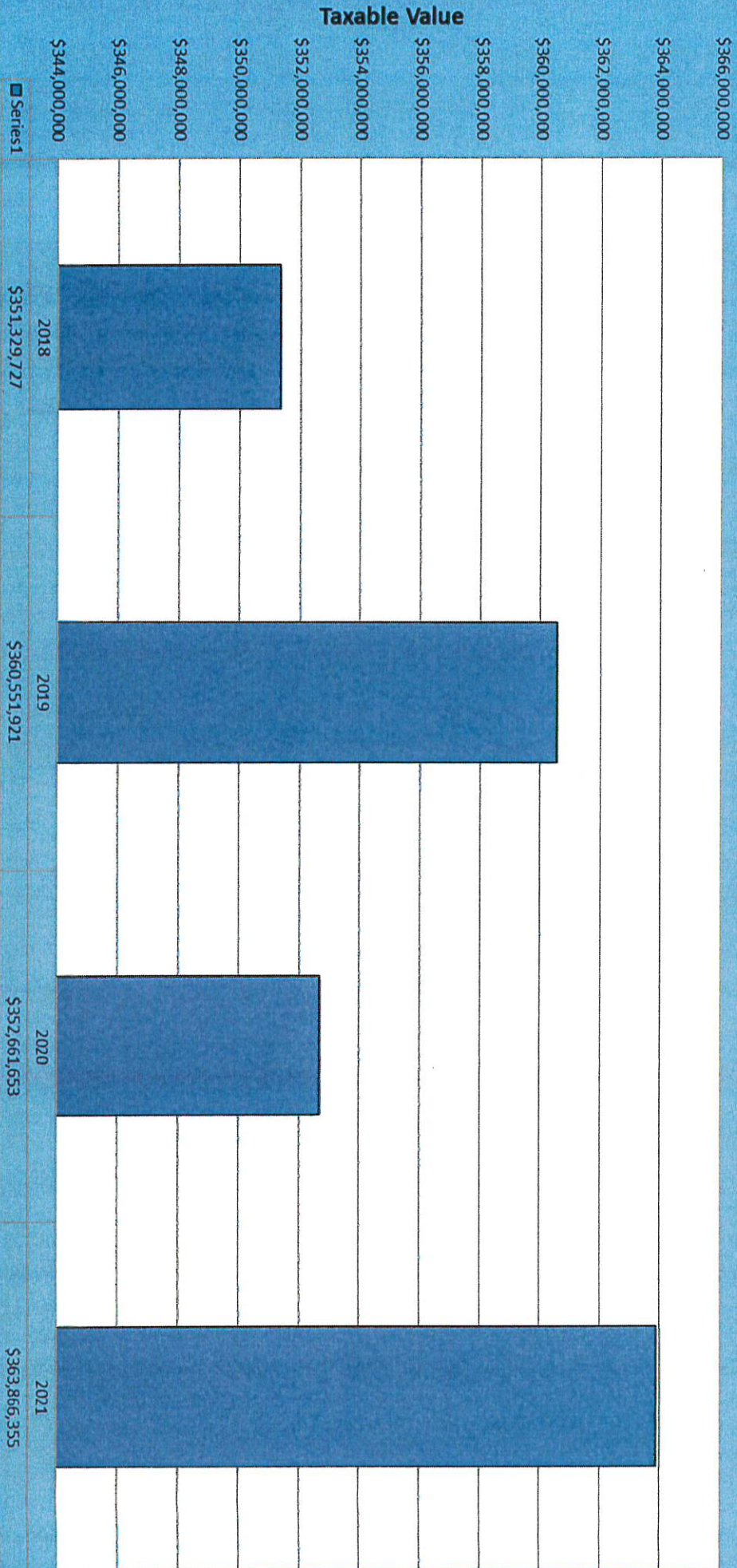
## Net Taxable Valuation Comparison

	Tax Year 2020	Tax Year 2021	\$ Change	% Change
<b>Total Taxable Value</b>	<b>\$352,661,653</b>	<b>\$ 363,866,355</b>	<b>\$ 11,204,704</b> \$2,636,018 Net New	<b>3.08%</b>
<b>Total Resid. Value</b>	<b>\$ 151,883,871</b>	<b>\$162,199,378</b>	<b>\$ 10,315,507</b> \$ 2,317,919 Net New	<b>6.36%</b>
<b>Total Non- Resid. Value</b>	<b>\$ 199,071,416</b>	<b>\$200,130,907</b>	<b>\$ 1,059,491</b> \$318,099 Net New	<b>0.53%</b>





## Total Taxable Value History

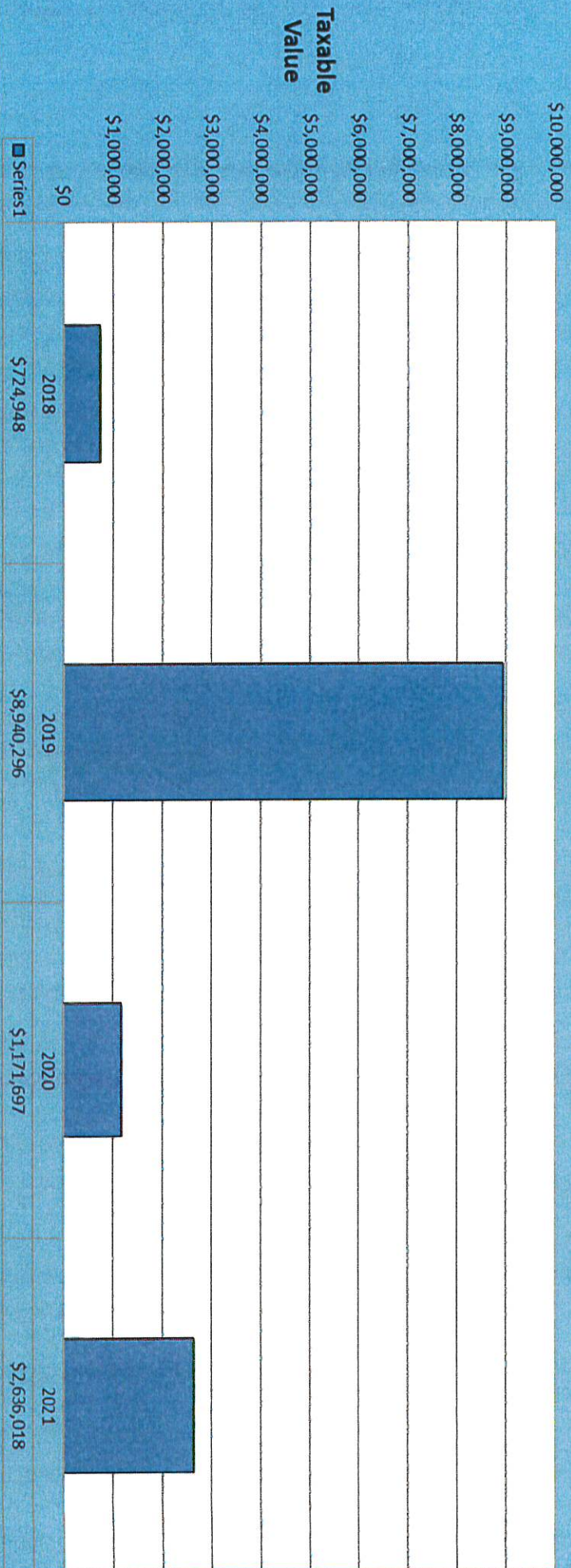


Series1





## New Taxable Value Added







8z.

# Reports Not Presented

Road Dept.

# ***Cibola County Road Dept.***

***700 E. Roosevelt Suite 50***

***Grants NM 87020***

***505-285-2570 Phone 505-285 3656 Fax***



***Friday April 9, 2021***

***To: Kate Fletcher - County Manager***

***Fr: Edward Salazar - Road Superintendent***

***Re: Monthly Report: 03/01/21 - 03/31/21 (February)***

## ***Regular Maintenance***

### ***Blade & Shape***

<b><u><i>Road</i></u></b>	<b><u><i>Description</i></u></b>	<b><u><i>Miles</i></u></b>
<b><i>C33</i></b>	<b><i>Candy Kitchen Road</i></b>	<b><i>7.563</i></b>
<b><i>C49</i></b>	<b><i>Zuni Canyon Road</i></b>	<b><i>6.714</i></b>
<b><i>C34</i></b>	<b><i>Pine Hill Road</i></b>	<b><i>9.744</i></b>
<b><i>C62A</i></b>	<b><i>Paxton Springs Road</i></b>	<b><i>3.578</i></b>
<b><i>C35C</i></b>	<b><i>Bell Road (W &amp; E Dusty Rd.)</i></b>	<b><i>2.997</i></b>
<b><i>C42</i></b>	<b><i>Back Country Byway</i></b>	<b><i>32.626</i></b>
<b><i>C63</i></b>	<b><i>Anaconda Road</i></b>	<b><i>5.931</i></b>
<b><i>C15</i></b>	<b><i>Rinconada Road</i></b>	<b><i>4.652</i></b>
<b><i>C35D</i></b>	<b><i>W. Homestead Road</i></b>	<b><i>2.949</i></b>
<b><i>C9</i></b>	<b><i>Water Canyon Road</i></b>	<b><i>4.095</i></b>
<b><i>C35B</i></b>	<b><i>White Hill Road</i></b>	<b><i>1.989</i></b>
<b><i>C35A</i></b>	<b><i>Moreno Hill Road</i></b>	<b><i>10.419</i></b>
<b><i>C29</i></b>	<b><i>Plano Colorado</i></b>	<b><i>3.046</i></b>
<b><i>C48A</i></b>	<b><i>Timberlake Road</i></b>	<b><i>5.700</i></b>
<b><i>Total Miles</i></b>		<b><i>102.003</i></b>

## ***Special Projects***

<b><i>C35D</i></b>	<b><i>W. Homestead Rd. - Repair cattle guard.</i></b>
<b><i>C35</i></b>	<b><i>Fencelake Area - Check culverts &amp; cattle guards.</i></b>
<b><i>C13</i></b>	<b><i>San Jose Loop - Reseed.</i></b>
<b><i>C40</i></b>	<b><i>Woodard Ranch Rd. - Check cattleguards.</i></b>

<b>C41</b>	<i>Pie Town Rd. - Check cattle guards, measure cattle guard.</i>
<b>C34</b>	<i>Pine Hill Rd. - Repair cattle guard.</i>
<b>C23</b>	<i>Ralph Card Rd. - Fix signs.</i>
<b>C58</b>	<i>San Rafael - Fix signs.</i>
<b>C24</b>	<i>Elkins Rd. - Fix signs.</i>
<b>C49</b>	<i>Zuni Cayon Rd. - Fix signs, clear snow from driveways left on 3/24/31</i>
<b>C6</b>	<i>Seboyeta-Bibo Rds. - Take down signs.</i>
<b>C20</b>	<i>San Mateo - Clearing treexs</i>
<b>C33</b>	<i>Candy Kitchen Rd. - Put up signs.</i>
<b>C35B</b>	<i>Wwhite Hill Rd. - Put up signs.</i>
	<i>Repair pot holes at front office.</i>
	<i>Meeting for Quart Hill Trail Parking Lot</i>
	<i>Help Wendy with shredding at old K-C building.</i>

### **Snow Removal**

<b>C49</b>	<i>Zuni Canyon Road</i>
	<i>Lobo Canyon Area</i>
<b>C20</b>	<i>San Mateo</i>
<b>C58</b>	<i>San Rafael</i>
<b>C30</b>	<i>Bluewater South</i>
	<i>Fencelake Area</i>
<b>C6</b>	<i>Seboyeta-Bibo Rds.</i>

# Cibola County Road Dept.

700 E. Roosevelt Suite 50

Grants NM 87020

505-285-2570 Phone Fax 505-287-3656



## **MAINTENANCE REPORT**

### **March 2021**

<u><b>Department</b></u>	<u><b>Unit Number</b></u>	<u><b>Total Parts &amp; Oil</b></u>	<u><b>Hours Worked</b></u>	<u><b>Mechanic Rate</b></u>	<u><b>Total on Repair Order</b></u>
<b>Road</b>	<b>522-Trailer</b>	<b>127.9</b>	<b>1</b>	\$ 18.40	<b>\$ 146.30</b>
<b>Road</b>	<b>137</b>	<b>120.59</b>	<b>0.5</b>	\$ 18.40	<b>\$ 129.79</b>
<b>Road</b>	<b>151</b>	<b>127.25</b>	<b>1</b>	\$ 18.40	<b>\$ 145.65</b>
<b>Road</b>	<b>153</b>	<b>29.03</b>	<b>1</b>	\$ 18.40	<b>\$ 47.43</b>
<b>Road</b>	<b>155</b>	<b>\$0.00</b>	<b>2</b>	\$ 18.40	<b>\$ 36.80</b>
				<b>TOTAL</b>	<b>\$ 505.97</b>

<u><b>Department</b></u>	<u><b>Unit Number</b></u>	<u><b>Total Parts &amp; Oil</b></u>	<u><b>Hours Worked</b></u>	<u><b>Mechanic Rate</b></u>	<u><b>Total on Repair Order</b></u>
<b>Sheriffs</b>	<b>G-90204</b>	<b>25.61</b>	<b>2</b>	\$ 18.40	<b>\$ 62.41</b>
<b>Sheriffs</b>	<b>09360-G</b>	<b>\$41.10</b>	<b>1</b>	\$ 18.40	<b>\$ 59.50</b>
				<b>TOTAL</b>	<b>\$ 121.91</b>

	MONTHLY FUEL USAGE															
	March 2021															
UNIT #	DEPT.	UNIT NO.	Mid Mo. Gal.	Mid Mo. \$	End Mo. Gal.	End Mo. \$	Other Gal.	Other \$	Total Gal.	Total \$	Total Miles	Cost/Mile	MPG	UNIT #		
127	Road	G-18473	0.000	\$0.00	0.000	\$0.00	0.000	\$0.00	0.000	\$0.00	N/U	#VALUE!	#VALUE!	127	Service Truck	
128	Road	G-18484	0.000	\$0.00	0.000	\$0.00	44.000	\$123.02	44.000	\$123.02	374	0.33	8.50	128	Welding Truck	
130	Road	G-18538	0.000	\$0.00	0.000	\$0.00	40.900	\$119.10	40.900	\$119.10	577	0.21	14.11	130		
131	Road	G-28800	0.000	\$0.00	0.000	\$0.00	0.000	\$0.00	0.000	\$0.00	N/U	#VALUE!	#VALUE!	131		
133	Road	G-23696	0.000	\$0.00	0.000	\$0.00	0.000	\$0.00	0.000	\$0.00	N/U	#VALUE!	#VALUE!	133	Fuel Truck	
137	Road	G-50237	0.000	\$0.00	0.000	\$0.00	50.800	\$171.01	50.800	\$171.01	461	0.35	9.67	137	Richard Cerno	
138	Road	G-95862	0.000	\$0.00	0.000	\$0.00	115.300	\$389.71	115.300	\$389.71	2,276	0.17	19.76	138	Edward Salazar	
139	Road	G-57384	0.000	\$0.00	0.000	\$0.00	0.000	\$0.00	0.000	\$0.00	N/U	#VALUE!	#VALUE!	139		
140	Road	G-57619	0.000	\$0.00	0.000	\$0.00	0.000	\$0.00	0.000	\$0.00	N/U	#VALUE!	#VALUE!	140		
141	Road	G-57918	0.000	\$0.00	0.000	\$0.00	0.000	\$0.00	0.000	\$0.00	N/U	#VALUE!	#VALUE!	141		
145	Road	Welder	0.000	\$0.00	0.000	\$0.00	0.000	\$0.00	0.000	\$0.00	4	0.00	#DIV/0!	145 Welder	Welder	
147	Road	G-66184	0.000	\$0.00	0.000	\$0.00	0.000	\$0.00	0.000	\$0.00	N/U	#VALUE!	#VALUE!	147		
148	Road	G-66165	0.000	\$0.00	0.000	\$0.00	11.500	\$33.00	11.500	\$33.00	361	0.09	31.39	148	Aaron Wheeler	
150	Road	G-70482	0.000	\$0.00	0.000	\$0.00	73.800	\$207.12	73.800	\$207.12	1,285	0.16	17.55	150		
151	Road	G-78718	0.000	\$0.00	0.000	\$0.00	100.700	\$283.76	100.700	\$283.76	1,576	0.19	15.65	151		
152	Road	G-84239	0.000	\$0.00	0.000	\$0.00	0.000	\$0.00	0.000	\$0.00	N/U	#VALUE!	#VALUE!	152		
153	Road	G-86952	0.000	\$0.00	0.000	\$0.00	81.400	\$173.80	81.400	\$173.80	1,553	0.11	25.33	153		
154	Road	G-88953	0.000	\$0.00	0.000	\$0.00	69.300	\$199.71	69.300	\$199.71	1,559	0.13	22.49	154		
155	Road	G-86584	0.000	\$0.00	0.000	\$0.00	30.200	\$84.88	30.200	\$84.88	733	0.12	24.27	155		
156	Road	Diesel Air Compressor	0.000	\$0.00	0.000	\$0.00	0.000	\$0.00	0.000	\$0.00	N/U	#VALUE!	#VALUE!	156	Diesel Air Compressor # 109	
157	Road	G-91750	0.000	\$0.00	0.000	\$0.00	136.500	\$376.91	136.500	\$376.91	2,325	0.16	17.03	157		
209	Road	G-18476	0.000	\$0.00	0.000	\$0.00	0.000	\$0.00	0.000	\$0.00	N/U	#VALUE!	#VALUE!	209	Mack	
212	Road	G-30550	0.000	\$0.00	0.000	\$0.00	0.000	\$0.00	0.000	\$0.00	N/U	#VALUE!	#VALUE!	212	Dump Truck	
213	Road	G-30549	0.000	\$0.00	0.000	\$0.00	0.000	\$0.00	0.000	\$0.00	N/U	#VALUE!	#VALUE!	213	Dump Truck	
214	Road	G-38441	0.000	\$0.00	0.000	\$0.00	87.100	\$296.00	87.100	\$296.00	431	0.69	4.95	214	Dump Truck	
215	Road	G-57372	0.000	\$0.00	0.000	\$0.00	0.000	\$0.00	0.000	\$0.00	N/U	#VALUE!	#VALUE!	215	Dump Truck	
216	Road	G-57371	0.000	\$0.00	0.000	\$0.00	0.000	\$0.00	0.000	\$0.00	N/U	#VALUE!	#VALUE!	216	Dump Truck	
217	Road	G-70782	0.000	\$0.00	0.000	\$0.00	0.000	\$0.00	0.000	\$0.00	N/U	#VALUE!	#VALUE!	217	Dump Truck	
218	Road	218	0.000	\$0.00	0.000	\$0.00	0.000	\$0.00	0.000	\$0.00	N/U	#VALUE!	#VALUE!	218	Distributor	
219	Road	219	0.000	\$0.00	0.000	\$0.00	0.000	\$0.00	0.000	\$0.00	N/U	#VALUE!	#VALUE!	219	Water Truck	
220	Road	220	0.000	\$0.00	0.000	\$0.00	116.000	\$390.00	116.000	\$390.00	468	0.83	3.97	220	New Mack Transport	
221	Road	221	0.000	\$0.00	0.000	\$0.00	197.900	\$671.00	197.900	\$671.00	1,058	0.63	5.35	221	New Dump Truck	
222	Road	222	0.000	\$0.00	0.000	\$0.00	49.100	\$155.00	49.100	\$155.00	80	1.98	1.63	222	New Dump Truck	
305	Road	305	0.000	\$0.00	0.000	\$0.00	0.000	\$0.00	0.000	\$0.00	N/U	#VALUE!	#VALUE!	305	Backhoe	
306	Road	306	0.000	\$0.00	0.000	\$0.00	0.000	\$0.00	0.000	\$0.00	N/U	#VALUE!	#VALUE!	306	Roller	
307	Road	307	0.000	\$0.00	0.000	\$0.00	0.000	\$0.00	0.000	\$0.00	N/U	#VALUE!	#VALUE!	307	Loader	
308	Road	308	0.000	\$0.00	0.000	\$0.00	26.900	\$83.00	26.900	\$83.00	33	2.82	1.23	308	Backhoe	

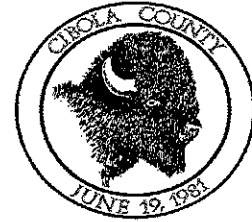
309	Road	309	0.000	\$0.00	0.000	\$0.00	0.000	\$0.00	0.000	\$0.00	0.000	NU	\$VALUE1	\$VALUE1	309	Bobcat
UNIT #	DEPT.	UNIT NO.	Mid Mo. Gals	Mid Mo. \$	End Mo. Gals	End Mo. \$	Other Gals	Other \$	Total Gals	Total \$	Total Miles	Cost/Mile	MPG	UNIT #		
310	Road	310	0.000	\$0.00	0.000	\$0.00	0.000	\$0.00	0.000	\$0.00	0.000	NU	\$VALUE1	\$VALUE1	310	Mower
311	Road	311	0.000	\$0.00	0.000	\$0.00	0.000	\$0.00	0.000	\$0.00	0.000	NU	\$VALUE1	\$VALUE1	311	Sweeper
312	Road	312	0.000	\$0.00	0.000	\$0.00	0.000	\$0.00	0.000	\$0.00	0.000	NU	\$VALUE1	\$VALUE1	312	Chip Spreader
313	Road	313	0.000	\$0.00	0.000	\$0.00	0.000	\$0.00	0.000	\$0.00	0.000	NU	\$VALUE1	\$VALUE1	313	New Roller
314	Road	314	0.000	\$0.00	0.000	\$0.00	0.000	\$0.00	0.000	\$0.00	0.000	NU	\$VALUE1	\$VALUE1	314	New Loader
416	Road	416	0.000	\$0.00	0.000	\$0.00	305.400	\$1,023.88	305.400	\$1,023.88	64	16.00	0.21	416	CAT Blade	
417	Road	417	0.000	\$0.00	0.000	\$0.00	126.500	\$422.16	126.500	\$422.16	38	11.11	0.36	417	Volvo Blade	
418	Road	418	0.000	\$0.00	0.000	\$0.00	146.500	\$492.77	146.500	\$492.77	42	11.73	0.29	418	Volvo Blade	
419	Road	419	0.000	\$0.00	0.000	\$0.00	104.300	\$360.76	104.300	\$360.76	28	12.88	0.27	419	Leased CAT Blade	
420	Road	420	0.000	\$0.00	0.000	\$0.00	88.400	\$300.37	88.400	\$300.37	81	5.89	0.58	420	Leased CAT Blade	
501	Road	501	0.000	\$0.00	0.000	\$0.00	0.000	\$0.00	0.000	\$0.00	0.000	NU	\$VALUE1	\$VALUE1	501	Dazer
525	Road	525	0.000	\$0.00	0.000	\$0.00	0.000	\$0.00	0.000	\$0.00	0.000	NU	\$VALUE1	\$VALUE1	525	Towable Boom

# ***Cibola County Road Dept.***

**515 W. High Street**

**Grants NM 87020**

**505-285-2570 Phone 505-287-3656 Fax**



## **FUEL REPORT - CIBOLA COUNTY ROAD DEPARTMENT March 2021**

<b>UNLEADED</b>						
<b>UNIT #</b>	<b>VEHICLE #</b>	<b>COST/MILE</b>	<b>MPG</b>	<b>MILES</b>	<b>TOTAL GAL.</b>	<b>TOTAL COST</b>
127	G-18473	#VALUE!	#VALUE!	N/U	0.000	\$ -
128	G-18464	0.33	8.50	374	44.000	\$ 123.02
130	G-15638	0.21	14.11	577	40.900	\$ 119.10
131	G-29800	#VALUE!	#VALUE!	N/U	0.000	\$ -
133	G-23696	#VALUE!	#VALUE!	N/U	0.000	\$ -
138	G-95862	0.17	19.76	2,278	115.300	\$ 389.71
139	G-57384	#VALUE!	#VALUE!	N/U	0.000	\$ -
140	G-57619	#VALUE!	#VALUE!	N/U	0.000	\$ -
141	G-57618	#VALUE!	#VALUE!	N/U	0.000	\$ -
146	146	0.00	#DIV/0!	4	0.000	\$ -
147	G-66164	#VALUE!	#VALUE!	N/U	0.000	\$ -
148	G-66165	0.09	31.39	361	11.500	\$ 33.00
150	G-70482	0.16	17.55	1,295	73.800	\$ 207.12
151	G-78718	0.19	15.65	1,576	100.700	\$ 293.76
152	G-64239	#VALUE!	#VALUE!	N/U	0.000	\$ -
153	G-86952	0.11	25.33	1,555	61.400	\$ 173.80
154	G-86953	0.13	22.48	1,558	69.300	\$ 199.71
155	G-86954	0.12	24.27	733	30.200	\$ 84.88
156	Diesel Air Compressor	#VALUE!	#VALUE!	N/U	0.000	\$ -
157	G-91750	0.16	17.03	2,325	136.500	\$ 376.91
<b>TOTAL GAS</b>					<b>683.600</b>	<b>\$ 2,001.01</b>

<b>DIESEL FUEL</b>						
<b>UNIT #</b>	<b>VEHICLE #</b>	<b>COST/MILE</b>	<b>MPG</b>	<b>MILES</b>	<b>TOTAL GAL.</b>	<b>TOTAL COST</b>
137	G-50237	0.35	9.67	491	50.800	\$ 171.01
209	G-18476	#VALUE!	#VALUE!	N/U	0.000	\$ -
212	G-30550	#VALUE!	#VALUE!	N/U	0.000	\$ -
213	G-30549	#VALUE!	#VALUE!	N/U	0.000	\$ -
214	G-38441	0.69	4.95	431	87.100	\$ 296.00
215	G-67372	#VALUE!	#VALUE!	N/U	0.000	\$ -
216	G-67371	#VALUE!	#VALUE!	N/U	0.000	\$ -
217	G-70782	#VALUE!	#VALUE!	N/U	0.000	\$ -
218	Distributor	#VALUE!	#VALUE!	N/U	0.000	\$ -
219	Water Truck	#VALUE!	#VALUE!	N/U	0.000	\$ -
220	New Transport	0.83	3.97	468	118.000	\$ 390.00
221	New Dump Truck	0.63	5.35	1,058	197.900	\$ 671.00
222	New Dump Truck	1.98	1.63	80	49.100	\$ 158.00
305	305	#VALUE!	#VALUE!	N/U	0.000	\$ -
306	306	#VALUE!	#VALUE!	N/U	0.000	\$ -
307	307	#VALUE!	#VALUE!	N/U	0.000	\$ -
308	308	2.82	1.23	33	26.900	\$ 93.00
309	309	#VALUE!	#VALUE!	N/U	0.000	\$ -
310	310	#VALUE!	#VALUE!	N/U	0.000	\$ -
311	311	#VALUE!	#VALUE!	N/U	0.000	\$ -
312	312	#VALUE!	#VALUE!	N/U	0.000	\$ -
313	313	#VALUE!	#VALUE!	N/U	0.000	\$ -
314	314	#VALUE!	#VALUE!	N/U	0.000	\$ -
416	416	16.00	0.21	64	305.400	\$ 1,023.88
417	417	11.11	0.30	38	126.500	\$ 422.18
418	418	11.73	0.29	42	146.500	\$ 492.77
419	419	12.88	0.27	28	104.300	\$ 360.76
420	420	5.89	0.58	51	88.400	\$ 300.37
501	501	#VALUE!	#VALUE!	N/U	0.000	\$ -
525	525	#VALUE!	#VALUE!	N/U	0.000	\$ -
Extra Fuel	Extra Fuel	#VALUE!	#VALUE!	N/U	0.000	\$ -
<b>TOTAL DIESEL</b>					<b>1300.900</b>	<b>\$ 4,378.97</b>

**\*N/U = NOT USED**





9a.

# Milan Industrial Park Presentation

Evan Williams-NWNMCOF Director



### **Our Team**

- Sarah Austin, Village Manager
- Eileen Yarbrough, Executive Director, Cibola Communities Economic Development Foundation
- Mario Infante-Juarez, Engineer, WCO
- Evan Williams, NWMCMCOG

### **Plant Your Flag | Gain the Competitive Edge**

New Mexico's Premier Industrial Park located in the heart of a Qualified Opportunity Zone minutes from Albuquerque.

**Rail Served, Built to Suit**

**Spec Building Shovel-Ready**

# Milan Industrial Park

Presentation Slidedeck

Cibola County Commission | April 22, 2021



# Our Community

## The Small Town Advantage:

### Village of Milan

#### MILAN, NM

CENSUS PLACE

ADD COMPARISON

POPULATION  
**3,636**  
0.22% 1-YEAR DECLINE

US SENATOR  
**Tom Udall**  
DEMOCRATIC PARTY

US SENATOR  
**Martin Heinrich**  
DEMOCRATIC PARTY

MEDIAN AGE  
**33.9**

POVERTY RATE  
**25.2%**

MEDIAN HOUSEHOLD INCOME  
**\$40,855**  
14.6% 1-YEAR GROWTH

MEDIAN PROPERTY VALUE  
**\$73,000**  
19.9% 1-YEAR DECLINE

NUMBER OF EMPLOYEES  
**1,584**  
31.2% 1-YEAR GROWTH

#### ABOUT

In 2018, Milan, NM had a population of 3,644 people with a median age of 33.9 and a median household income of \$40,855. Between 2017 and 2018 the population of Milan, NM declined from 3,644 to 3,636, a -0.22% decrease and its median household income grew from \$35,648 to \$40,855, a 14.6% increase.

The 5 largest ethnic groups in Milan, NM are White (Hispanic) (51.5%), White (Non-Hispanic) (17.6%), Other (Hispanic) (13.8%), American Indian & Alaska Native (Non-Hispanic) (6.44%), and American Indian & Alaska Native (Hispanic) (5.5%). NaN% of the people in Milan, NM speak a non-English language, and 95% are US citizens.

The median property value in Milan, NM is \$73,000, and the homeownership rate is 63.8%. Most people in Milan, NM commute by Drove Alone, and the average commute time is 15.1 minutes. The average car ownership in Milan, NM is 3 cars per household.

## Cibola County's Industrial Center

TOTAL POPULATION  
**25,854**

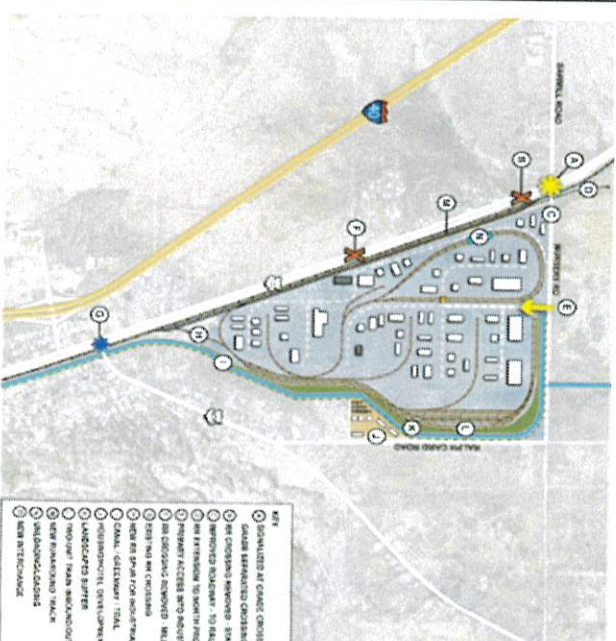
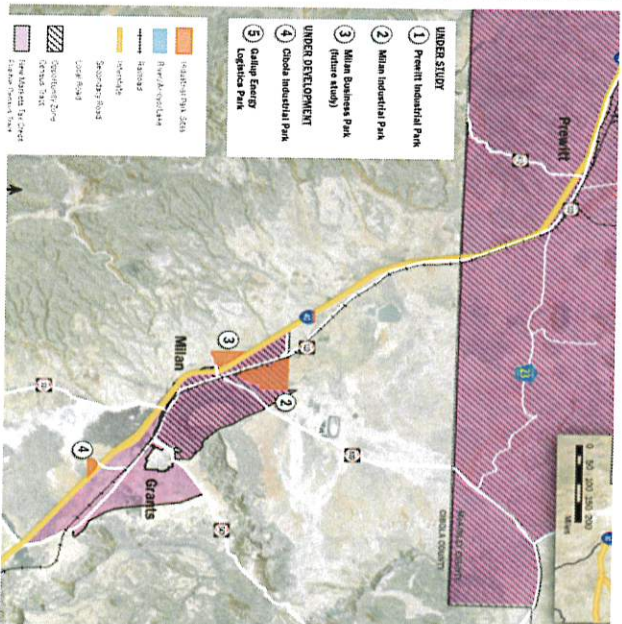
TOTAL BUSINESSES  
**598**

TOTAL EMPLOYED  
**8,142**

WORKERS 16+  
**9,283**

2018	2017	2016	2015	2014	2013
UNEMPLOYED	1,079	1,082	1,065	1,057	1,055
EMPLOYED	1,002	1,065	1,082	1,057	1,055
TOTAL	2,081	2,147	2,147	2,114	2,110
GRADUATE DEGREE	882	882	882	882	882
BACHELOR'S DEGREE	1,555	1,555	1,555	1,555	1,555
ASSOCIATES DEGREE	1,899	1,899	1,899	1,899	1,899
HIGH SCHOOL	2,223	2,223	2,223	2,223	2,223
SOME	2,223	2,223	2,223	2,223	2,223

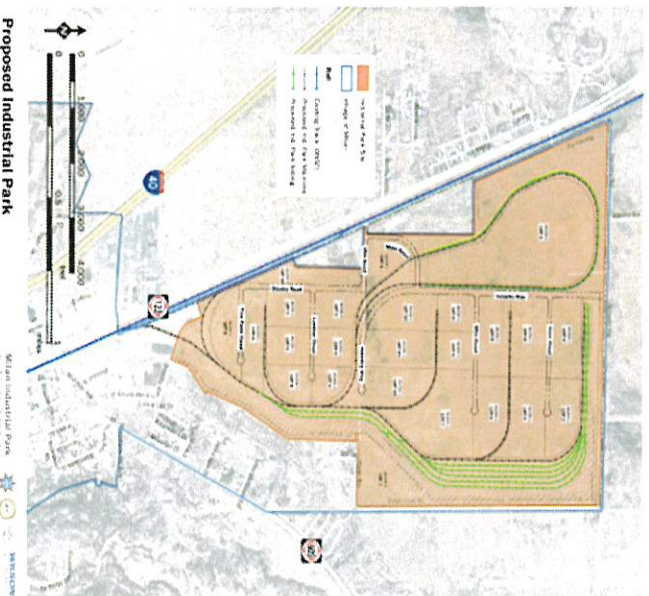






## Our Site: Competitive Advantages

# MILAN INDUSTRIAL PARK



Proposed Industrial Park

## ADVANTAGES

- Access to I-40, is a major east-west Interstate Highway running through the south-central portion of the United States.
- I-40 runs through or near many major cities including Albuquerque, New Mexico; Amarillo, Texas; Oklahoma City, Oklahoma; Little Rock, Arkansas; Memphis, Tennessee; Nashville, Tennessee; Knoxville, Tennessee; Greensboro, North Carolina; and Raleigh, North Carolina.
- Access to the Southern Transcon, which is a railroad corridor between Southern California and Chicago, Illinois and serves as a BNSF Railway main line made up of 11 rail lines between Southern California and Chicago.
- To accommodate transient and local pilots, self-service fuel (Av. Gas and Jet A) is available 24/7. Additionally, full-service Jet A (single point and over-wing) is available during normal business hours (8-5 weekdays and 9-1 weekends) - after-hours service is available by calling 505.287.4700.

The Milan Industrial Park is a 912.93-acre, master-planned industrial development located in Milan, New Mexico with direct access to Interstate 40 (I-40), BNSF Southern Transcon, and the Grants-Milan Airport. The Village of Milan Tract Farms Rail Served Industrial Rail Park offers a great location with easy access to transportation logistics, low front-end capital investment, development incentives, and quick space move-in.



INTERMODAL FACILITY CAPACITY  
BNSF 2017 Intermodal Density Flow



## 120,000 SF SPEC BUILDING

- Turn-key concrete construction for cost effective and time sensitive solutions
- Facilitated Permitting Process
- Preliminary Spec Building Design Plans available
- Major Highway I-40
- BNSF Southern Transcon
- 24/7 self-service fuel available
- Grants-Milan Airport

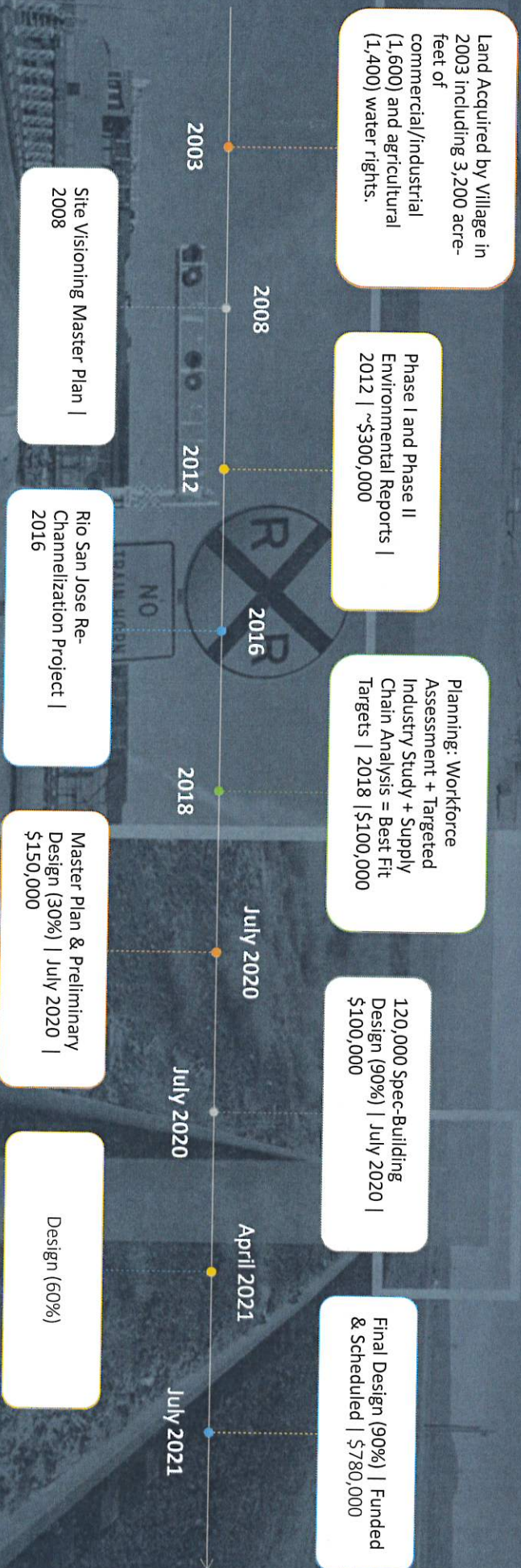
## ACCESS

## WORKFORCE SOLUTIONS

- New Mexico State University (NMSU) grants available for workforce development
- Accessible local workforce supported by Albuquerque which is less than 1-hour away
- Training Incentive Program (TIP) funds classroom and on-the-job training for newly-created jobs



# Our Due Diligence Work to Date



## Milan Industrial Park

MASTER PLAN AND PRELIMINARY DESIGN



# Environmental Review

## Phase I Environmental Site Assessment

Milan Farm, Milan, New Mexico

Project Site Code 87021-001

Prepared for Northwest New Mexico Council of Governments  
Gallup, New Mexico

August 4, 2011



**Daniel B. Stephens & Associates, Inc.**

6020 Academy NE, Suite 100 • Albuquerque, New Mexico 87109

**Table ES-1. Findings Regarding Recognized Environmental Conditions for Milan Farm  
Milan, New Mexico**

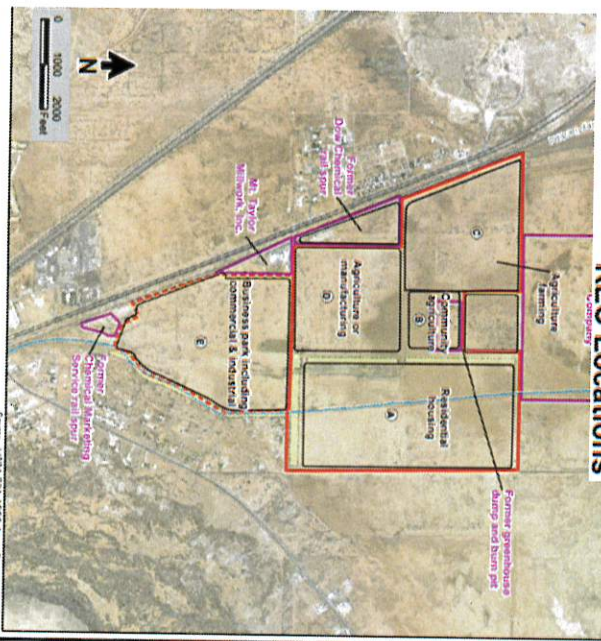
Site Name	Address	RECs	PI
Homeslake Mining Company	New Mexico State Highway 605	X	X
NMDOT District 6 Patrol Yard	1818 Piñon Drive	X	
Former Dow Chemical Rail Spur	New Mexico State Highway 122	X	X
Mt. Taylor Millwork, Inc.	4201 Elkins Road	X	X
Former Chemical Marketing Services Rail Spur	New Mexico State Highway 122	X	X
Former Mesa Services LTD	1713 Berryhill	X	
Milan Chevron	701 West Highway 66	X	
Love's County Store #257	I-40 and Horizon Boulevard	X	
Petro	I-40 and Horizon Boulevard	X	
Marvin Burrows	1430 Febco	X	

REC = Known or suspected recognized environmental condition  
PI = REC that may potentially impact subject property

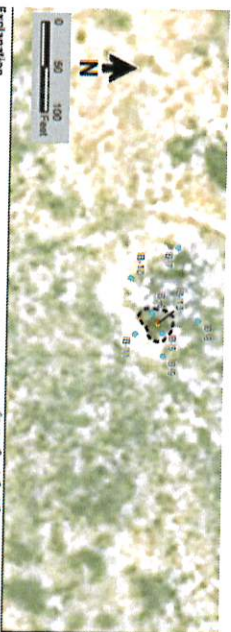
NMDOT = New Mexico Department of Transportation



# MILAN FARM Proposed Future Land Use and REC Locations



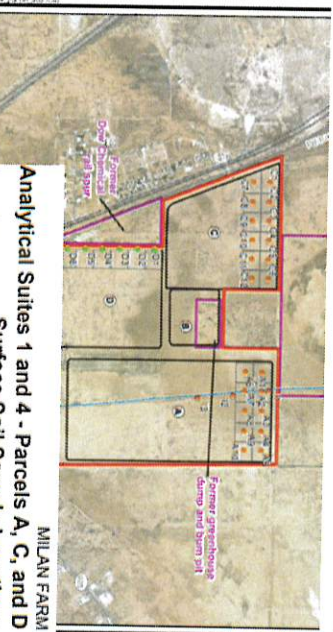
Analytical Suite 2 - Parcels A, B, C, D, and E  
Surface Soil Sample Locations



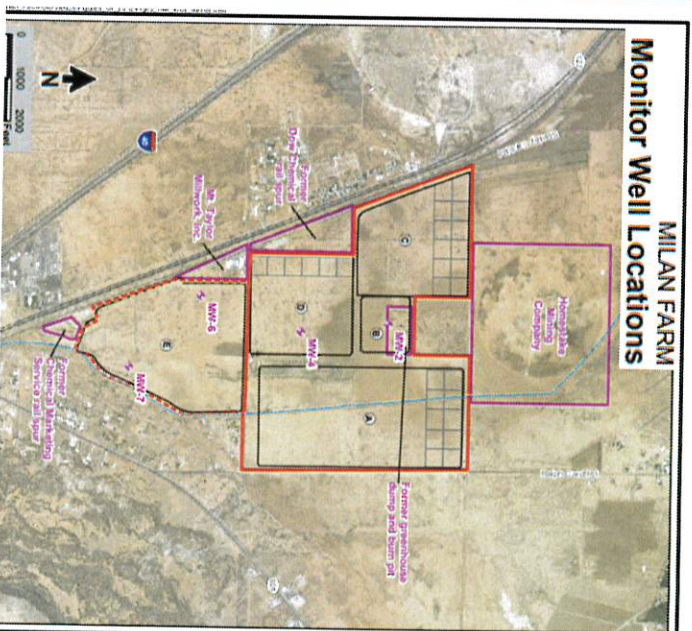
- Explanation
- Suite 1, 2, and 3 surface soil sample location
  - Suite 2 surface soil sample location
  - Suite 3 surface soil sample location

Source: Google Earth Pro, dated 2005

Parcel B - Former Burn Pit and Greenhouse  
MILAN FARM



Analytical Suites 1 and 4 - Parcels A, C, and D  
Surface Soil Sample Locations  
MILAN FARM



MILAN FARM  
Monitor Well Locations

## Sampling & Analysis Plan (SAP) & QAPP



# Environmental Review

## Phase II Site Characterization

Milan Farm, Milan, New Mexico  
Project Site Code 87021-001

### Prepared for

Northwest New Mexico  
Council of Governments  
Gallup, New Mexico

September 27, 2012



**Daniel B. Stephens & Associates, Inc.**

6020 Academy NE, Suite 100 • Albuquerque, New Mexico 87109



*Daniel B. Stephens & Associates, Inc.*

### Executive Summary

Daniel B. Stephens & Associates, Inc. (DBS&A) was retained by the Northwest New Mexico Council of Governments (NWNMCOG) to conduct a Phase II environmental site assessment (ESA) for a future development in Milan, New Mexico under the U.S. Environmental Protection Agency (EPA) Brownfields Program. This report summarizes the results of the Phase II investigation performed by DBS&A at the subject property.

The subject property is located between State Highway 122 and State Highway 605 in Milan, New Mexico. Milan is located in Chispa County, which is in the west-central section of New Mexico. The approximately 850-acre site is bounded on the north side by Nursery Road, on the east side by Ralph Card Road, on the west side by Stanley Card Road, and on the south side by Stanley Avenue.

Past activities that may have had an environmental impact on the subject property include (1) chemical use associated with agricultural production on the site, and (2) the potential presence of contaminants related to documented uses of the subject property and adjacent properties including the Homestake Mining Company (HMC) Superfund site, the Former Dow Chemical Railroad Spur, the Mill Taylor Millwork, and the former Chemical Marketing Service Railroad Spur.

A Phase I ESA was performed by DBS&A and was submitted to NWNMCOG on August 4, 2011. The purpose of the Phase I ESA was to identify any potential past, current, or future recognized environmental conditions (RECs) at the subject property due to facility or off-site activities. During the Phase I ESA, a number of properties adjacent to the subject property were identified as having potential RECs. Although it appeared that contamination associated with these properties was minimal, and that the potential for hydrocarbon contamination at the subject property was low, it was recommended that these results be verified with a Phase II ESA.

Field sampling was performed as described in the Phase II sampling analysis plan. Widespread contamination was not identified in soils or groundwater at the subject property.



*Daniel B. Stephens & Associates, Inc.*

With the exception of radium in samples collected from Irrigation Canal 1 within the drainages emanating from the HMC property, radiological constituents were detected in soil samples at concentrations that are within the range of background and below New Mexico Environment Department (NMED) soil screening levels (SSLs). The radium concentrations are slightly elevated with respect to background, but do not appear to require further characterization at this time.

Analytical results for agricultural applications, including pesticides, herbicides, and nitrate, were found to be below the NMED SSLs throughout all parcels on the subject property.

Although detected at concentrations below NMED SSLs, dioxins and furans were present in Parcel B at the former burn pit area. It is recommended that additional characterization be performed in the burn pit area prior to any redevelopment.

### Source Documents

<http://www.nwnmcog.com/milan-industrial-park.html>



# Breakdown of Current Design

## Deliverables

Deliverables	Status
Mapping & Topography	Completed December 2020; additional survey information was collected March 2021.
Geotechnical Investigation	Report completed on February 2021.
Roadway & Drainage Design	In progress. Created sheet set for roadway including cover sheet, vicinity map, index sheet, plan and profiles, and standard drawings. Geotechnical report has been reviewed. Onsite drainage is being evaluated. Additional project area for Stanley Road south of Tree Farm Road has been identified. A preliminary profile has been set for this portion of the project. Onsite drainage analysis has been completed for initial project area with storm drain complete.
Railroad Service	In progress for 60% submittal on 4/30/2021; working to solidify a date for approval from BNSF.
Water & Wastewater	In progress. Created draft site plan for the tank, booster pump station, and lift station. Plan and profile sheets developed and coordination with roadway is continued.
Dry Utilities	In progress and on schedule for 60% submittal on 4/30/2021.
Spec Building & Tenant Meetings	Ongoing
BNSF Certification	Cultural and Biological Field Surveys are in progress and will be completed the week of 4/12. The team finding more archaeological sites than expected, mainly in the northern portion of the parcel. Working on access and site control.
LOMR/CLOMR	This item is on schedule for 07/30/2021 6-9 months after the submittal for approval from FEMA

## FINAL DESIGN



Our Investment Opportunity

# Full Park Build-out

Phase	Estimated Cost
Full-Build Cost (excl. Spec Building)	\$.....56,700,000
Phase I Spec Building Development Cost	\$.....26,900,000
Full On-Site Buildout Development Cost with Phase 1 Spec Building	\$.....74,300,000



**120,000 SF SPEC BUILDING**

- Tile-up concrete construction for cost effective and time sensitive solutions
- Facilitated Permitting Process
- Preliminary Spec Building Design Plans available

TOTAL COST, PHASE I AND II INFRASTRUCTURE

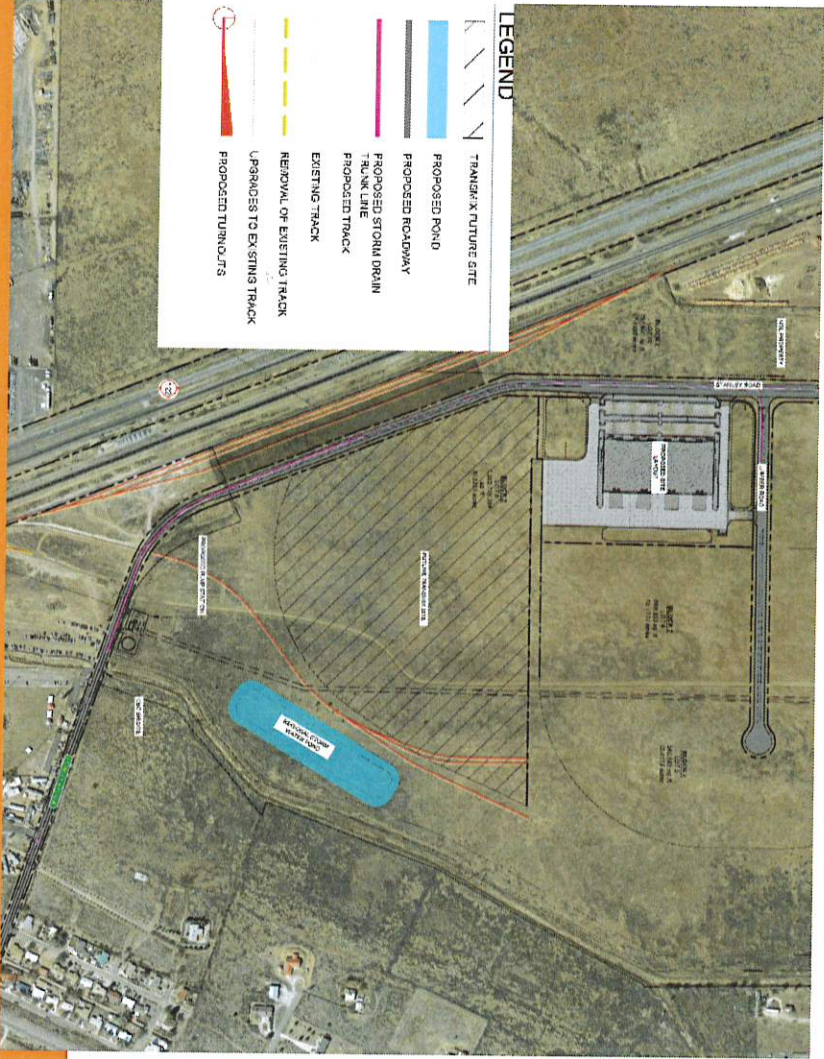
Estimated Construction Costs By Phase	
Phase I	
Infrastructure Type	Amount
Phase I, Civil Infrastructure (Grading, Drainage & Streets)	\$.....10,700,000
Phase I, Rail Infrastructure	\$.....7,800,000
Phase I, Wastewater (Lift Station, Force Main, Gravity Sewer Lines, and Manholes Total) and Water Infrastructure (Booster Pump, Storage Tank, Fire Pump and Building)	\$.....2,100,000
Private Utilities	\$.....700,000
Phase I Estimated Build-Out Cost	\$.....21,300,000
Phase II	
Phase II, Civil Infrastructure (Grading, Drainage & Streets)	\$.....12,100,000
Phase I, Rail Infrastructure	\$.....28,900,000
Phase II, Wastewater (Lift Station, Force Main, Gravity Sewer Lines, and Manholes Total)	\$.....700,000
Phase II, Water Infrastructure (Booster Pump, Storage Tank, Fire Pump and Building)	\$.....600,000
Phase I Estimated Build-Out Cost	\$.....45,300,000
Estimated Build-Out Cost	\$.....66,600,000



Our Initial Investment Raise

Phase I Build-out

Estimated Construction Costs By Phase	
Phase I	
Infrastructure Type	Amount
Phase I, Civil Infrastructure (Grading, Drainage & Streets)	\$.....10,700,000
Phase I, Rail Infrastructure	\$.....7,800,000
Phase I, Wastewater (Lift Station, Force Main, Gravity Sewer Lines, and Manholes Total) and Water Infrastructure (Booster Pump, Storage Tank, Fire Pump and Building)	\$.....2,100,000
Private Utilities	\$.....700,000
Phase I Estimated Build-Out Cost	\$.....21,300,000



Plant Your Flag | Gain the Competitive Edge

New Mexico's Premier Industrial Park located in the heart of a Qualified Opportunity Zone minutes from Albuquerque.

Rail Served

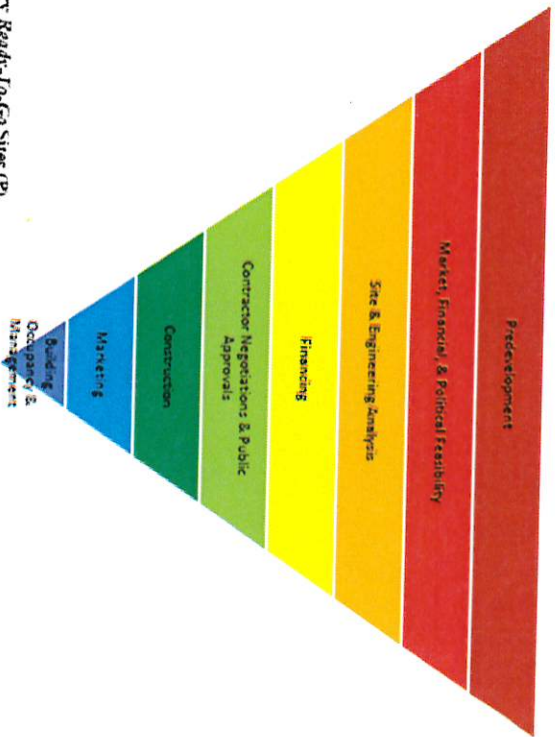
Spec Building Shovel-Ready/Built to Suit





## 15-Year Economic Development Plan – 2020-2035

Timeframe			
Short -- Phase A: 2020-2022		Immediate -- Phase B: 2022-2025	
Targets		Long -- Phase C: 2025-2035	
	<ul style="list-style-type: none"> <li>Warehouse/Distribution</li> <li>Food/Beverage</li> <li>Value-Added Agriculture*</li> </ul>	<ul style="list-style-type: none"> <li>Continued Phase A</li> <li>Plastics</li> </ul>	<ul style="list-style-type: none"> <li>Continued Phase A &amp; B</li> <li>Outdoor Recreation &amp; Advanced Manufacturing</li> <li>Re-assess Targeted Industry Assessment</li> </ul>
Leads	<ul style="list-style-type: none"> <li>10 per year</li> <li>2 per year</li> <li>50 per year</li> </ul>	<ul style="list-style-type: none"> <li>25 per year</li> <li>5 per year</li> <li>150 per year</li> </ul>	<ul style="list-style-type: none"> <li>50 per year</li> <li>10 per year</li> <li>300 per year</li> </ul>
Job Creation			
Economic Opportunity	<ul style="list-style-type: none"> <li>BNSF Southwest Strategy Certified Site Program</li> <li>COVID-19 Rural Shift &amp; Supply Disruption*</li> <li>120,000 Spec Building</li> </ul>	<ul style="list-style-type: none"> <li>Continued Phase A</li> <li>Foreign Trade Zone</li> </ul>	<ul style="list-style-type: none"> <li>Continued Phase A &amp; B</li> <li>Transatlantic Business &amp; Investment Council</li> <li>Albuquerque Supply Chain integration</li> </ul>
Investment Strategy			
Organization Development	<ul style="list-style-type: none"> <li>Bring in other developers</li> <li>Build local marketing team</li> <li>Partner with NMSU</li> </ul>	<ul style="list-style-type: none"> <li>Re-invest based on sales/leases</li> <li>Hire a Park Manager and other contractors (e.g. Commercial Broker, Legal, Maintenance, &amp; Security)</li> </ul>	<ul style="list-style-type: none"> <li>Continued B</li> <li>Hire a Transloading &amp; Logistics Manager</li> </ul>
Market Development	<ul style="list-style-type: none"> <li>Complete Market Feasibility Study</li> <li>Park Business Plan</li> <li>Sales/Lease Strategy</li> <li>Bring in developers</li> </ul>	<ul style="list-style-type: none"> <li>Southwest supplier recruiting program</li> <li>Develop fast-track build to suit program</li> <li>Build total cost model</li> <li>Build local marketing team</li> </ul>	<ul style="list-style-type: none"> <li>Southwest supplier and JIT distribution recruiting program</li> <li>San Juan Basin oil &amp; gas supply</li> <li>State investment in OutRec and local amenities like ZMTP, Indoor Arena, etc.</li> </ul>
Infrastructure Development	<ul style="list-style-type: none"> <li>Final site 1 Design</li> <li>Prewitt-Milan Transportation Master Plan</li> <li>Milan Airport Upgrades</li> <li>Airport Road</li> </ul>	<b>Site 1 Build:</b> <ul style="list-style-type: none"> <li>Phase I Roads (\$6.25M)</li> <li>Phase I Rail (\$3.3M)</li> <li>Phase I Wastewater (\$500K)</li> <li>Phase I Water (\$1.3M)</li> <li>Broadband</li> </ul>	<b>Full Park Build:</b> <ul style="list-style-type: none"> <li>Phase II Roads (\$12M)   Phase II Rail (\$29M)</li> <li>Phase I Wastewater (\$706K)   Phase I Water (\$3.6M)</li> <li>Broadband</li> <li>Horizon Blvd Interchange</li> <li>Regional Wastewater Facility</li> </ul>
Financing	<ul style="list-style-type: none"> <li>Financing &amp; Grant Attraction Plan</li> <li>FUNDIT Presentation   ICP Inclusion   Opportunity Zone Community Prospectus</li> </ul>	<ul style="list-style-type: none"> <li>State Resources (LEDA, CO, NMFA)</li> <li>EDA   Locomotive Fuel Tax   Drinking &amp; Clean Water RLF</li> <li>Local bonds based on lease</li> </ul>	<ul style="list-style-type: none"> <li>Tax Increment Finance District</li> <li>Industrial Revenue Bonds</li> <li>Local bonds based on lease revenue</li> </ul>
Workforce Development	<ul style="list-style-type: none"> <li>Open Houses</li> <li>Partner with NMSU-Grants &amp; GCCS to build continuum (dual credit, career pathways, etc.)</li> <li>Re-visit FCG recommendations (Pg 51-60)</li> </ul>	<ul style="list-style-type: none"> <li>Partner w/ GSEDC to expand Industrial Workforce Program</li> <li>Create a Fabrication Laboratory (FabLab) at NMSU-Grants</li> <li>Expand ACT WorkKeys</li> </ul>	<ul style="list-style-type: none"> <li>ACT/National Career Readiness Certificate Program and WorkReady Community</li> <li>K-12 through High School Apprenticeship Program</li> <li>On-site VoTech Training Center</li> <li>Reentry Workforce Program</li> </ul>



#### Primary Ready-To-Go Sites (P)

#### Milan Industrial Park

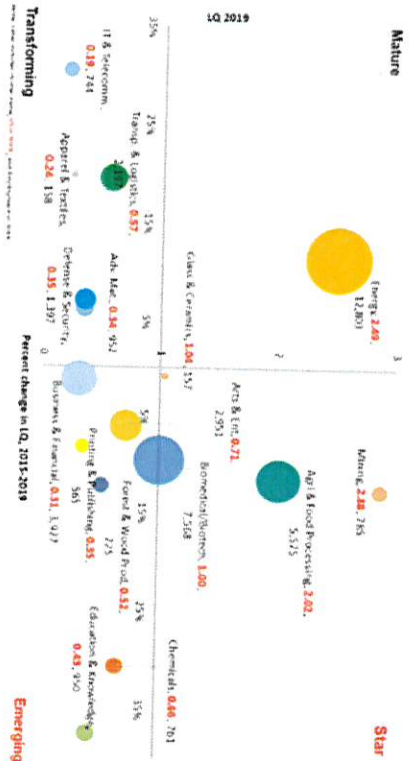
Milan Industrial Park is one of the best industrial sites in the region and ready-to-go. Key strengths and weaknesses include:

#### Strengths:

- Good, direct access to I-40
- 800 acres available of fully-improved property; the potential of numerous 100-acre site options
- All utilities (water—plus three wells; sanitary sewer; natural gas; some fiber optics; electric) at the park site
- BNSF rail spurs can be extended to meet any section of the park
- Flat topography
- Can handle any of the industrial and warehouse distribution targets (NGL has purchased 400 acres for an oil-related operation, but the energy elevators has put that on hold)
- Zoned Industrial
- Price: \$2,500/acre.

#### Weaknesses:

- Truck access must cross the BNSF mainline. This could cause truck back-ups which may cause freight delays.



#### "BEST HIT" TARGETS

Here are the best fit target sectors (by priority) which best match the Perot Region's strengths. The following also lists the best NAICS sectors to pursue and important points regarding the "best fit" targets.

#### Milan Industrial Park

#### GLP Site

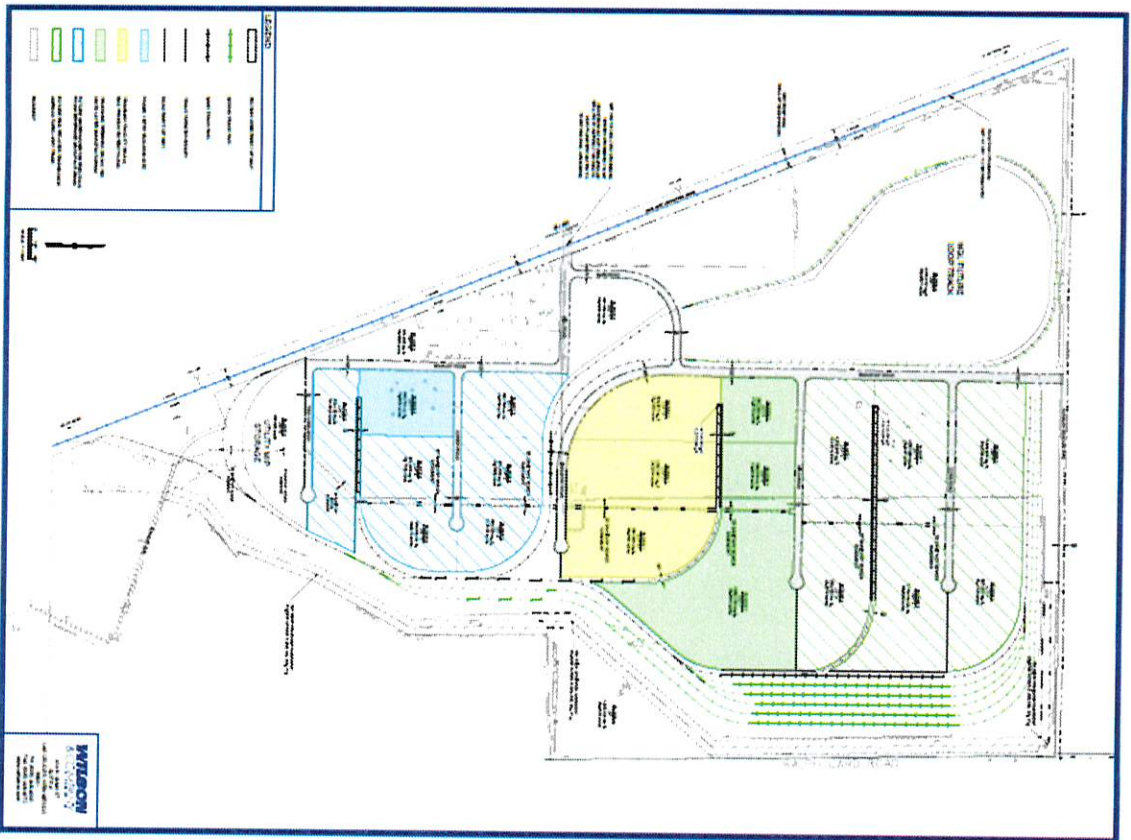
- 1) Warehouse Distribution
- 2) Food Beverage
- 3) Plastics
- 4) Industrial Machinery
- 5) Oil/Gas Related
- 6) Paper
- 7) Call Centers

#### Warehouse Distribution (DC, Fulfillment)

Electronics assembly is eliminated due to skills, tax, and supplier issues. Data centers have been eliminated due to electric power costs.

#### Best Sectors: NAICS - 311111, 311122, 311123, 311124, 311125, 311126, 311127, 311128, 311129, 311130, 311131, 311132, 311133, 311134, 311135, 311136, 311137, 311138, 311139, 311140, 311141, 311142, 311143, 311144, 311145, 311146, 311147, 311148, 311149, 311150, 311151, 311152, 311153, 311154, 311155, 311156, 311157, 311158, 311159, 311160, 311161, 311162, 311163, 311164, 311165, 311166, 311167, 311168, 311169, 311170, 311171, 311172, 311173, 311174, 311175, 311176, 311177, 311178, 311179, 311180, 311181, 311182, 311183, 311184, 311185, 311186, 311187, 311188, 311189, 311190, 311191, 311192, 311193, 311194, 311195, 311196, 311197, 311198, 311199, 311200, 311201, 311202, 311203, 311204, 311205, 311206, 311207, 311208, 311209, 311210, 311211, 311212, 311213, 311214, 311215, 311216, 311217, 311218, 311219, 311220, 311221, 311222, 311223, 311224, 311225, 311226, 311227, 311228, 311229, 311230, 311231, 311232, 311233, 311234, 311235, 311236, 311237, 311238, 311239, 311240, 311241, 311242, 311243, 311244, 311245, 311246, 311247, 311248, 311249, 311250, 311251, 311252, 311253, 311254, 311255, 311256, 311257, 311258, 311259, 311260, 311261, 311262, 311263, 311264, 311265, 311266, 311267, 311268, 311269, 311270, 311271, 311272, 311273, 311274, 311275, 311276, 311277, 311278, 311279, 311280, 311281, 311282, 311283, 311284, 311285, 311286, 311287, 311288, 311289, 311290, 311291, 311292, 311293, 311294, 311295, 311296, 311297, 311298, 311299, 311300, 311301, 311302, 311303, 311304, 311305, 311306, 311307, 311308, 311309, 311310, 311311, 311312, 311313, 311314, 311315, 311316, 311317, 311318, 311319, 311320, 311321, 311322, 311323, 311324, 311325, 311326, 311327, 311328, 311329, 311330, 311331, 311332, 311333, 311334, 311335, 311336, 311337, 311338, 311339, 311340, 311341, 311342, 311343, 311344, 311345, 311346, 311347, 311348, 311349, 311350, 311351, 311352, 311353, 311354, 311355, 311356, 311357, 311358, 311359, 311360, 311361, 311362, 311363, 311364, 311365, 311366, 311367, 311368, 311369, 311370, 311371, 311372, 311373, 311374, 311375, 311376, 311377, 311378, 311379, 311380, 311381, 311382, 311383, 311384, 311385, 311386, 311387, 311388, 311389, 311390, 311391, 311392, 311393, 311394, 311395, 311396, 311397, 311398, 311399, 311400, 311401, 311402, 311403, 311404, 311405, 311406, 311407, 311408, 311409, 311410, 311411, 311412, 311413, 311414, 311415, 311416, 311417, 311418, 311419, 311420, 311421, 311422, 311423, 311424, 311425, 311426, 311427, 311428, 311429, 311430, 311431, 311432, 311433, 311434, 311435, 311436, 311437, 311438, 311439, 311440, 311441, 311442, 311443, 311444, 311445, 311446, 311447, 311448, 311449, 311450, 311451, 311452, 311453, 311454, 311455, 311456, 311457, 311458, 311459, 311460, 311461, 311462, 311463, 311464, 311465, 311466, 311467, 311468, 311469, 311470, 311471, 311472, 311473, 311474, 311475, 311476, 311477, 311478, 311479, 311480, 311481, 311482, 311483, 311484, 311485, 311486, 311487, 311488, 311489, 311490, 311491, 311492, 311493, 311494, 311495, 311496, 311497, 311498, 311499, 311500, 311501, 311502, 311503, 311504, 311505, 311506, 311507, 311508, 311509, 311510, 311511, 311512, 311513, 311514, 311515, 311516, 311517, 311518, 311519, 311520, 311521, 311522, 311523, 311524, 311525, 311526, 311527, 311528, 311529, 311530, 311531, 311532, 311533, 311534, 311535, 311536, 311537, 311538, 311539, 311540, 311541, 311542, 311543, 311544, 311545, 311546, 311547, 311548, 311549, 311550, 311551, 311552, 311553, 311554, 311555, 311556, 311557, 311558, 311559, 311560, 311561, 311562, 311563, 311564, 311565, 311566, 311567, 311568, 311569, 311570, 311571, 311572, 311573, 311574, 311575, 311576, 311577, 311578, 311579, 311580, 311581, 311582, 311583, 311584, 311585, 311586, 311587, 311588, 311589, 311590, 311591, 311592, 311593, 311594, 311595, 311596, 311597, 311598, 311599, 311600, 311601, 311602, 311603, 311604, 311605, 311606, 311607, 311608, 311609, 311610, 311611, 311612, 311613, 311614, 311615, 311616, 311617, 311618, 311619, 311620, 311621, 311622, 311623, 311624, 311625, 311626, 311627, 311628, 311629, 311630, 311631, 311632, 311633, 311634, 311635, 311636, 311637, 311638, 311639, 311640, 311641, 311642, 311643, 311644, 311645, 311646, 311647, 311648, 311649, 311650, 311651, 311652, 311653, 311654, 311655, 311656, 311657, 311658, 311659, 311660, 311661, 311662, 311663, 311664, 311665, 311666, 311667, 311668, 311669, 311670, 311671, 311672, 311673, 311674, 311675, 311676, 311677, 311678, 311679, 311680, 311681, 311682, 311683, 311684, 311685, 311686, 311687, 311688, 311689, 311690, 311691, 311692, 311693, 311694, 311695, 311696, 311697, 311698, 311699, 311700, 311701, 311702, 311703, 311704, 311705, 311706, 311707, 311708, 311709, 311710, 311711, 311712, 311713, 311714, 311715, 311716, 311717, 311718, 311719, 311720, 311721, 311722, 311723, 311724, 311725, 311726, 311727, 311728, 311729, 311730, 311731, 311732, 311733, 311734, 311735, 311736, 311737, 311738, 311739, 311740, 311741, 311742, 311743, 311744, 311745, 311746, 311747, 311748, 311749, 311750, 311751, 311752, 311753, 311754, 311755, 311756, 311757, 311758, 311759, 311760, 311761, 311762, 311763, 311764, 311765, 311766, 311767, 311768, 311769, 311770, 311771, 311772, 311773, 311774, 311775, 311776, 311777, 311778, 311779, 311780, 311781, 311782, 311783, 311784, 311785, 311786, 311787, 311788, 311789, 311790, 311791, 311792, 311793, 311794, 311795, 311796, 311797, 311798, 311799, 311800, 311801, 311802, 311803, 311804, 311805, 311806, 311807, 311808, 311809, 311810, 311811, 311812, 311813, 311814, 311815, 311816, 311817, 311818, 311819, 311820, 311821, 311822, 311823, 311824, 311825, 311826, 311827, 311828, 311829, 311830, 311831, 311832, 311833, 311834, 311835, 311836, 311837, 311838, 311839, 311840, 311841, 311842, 311843, 311844, 311845, 311846, 311847, 311848, 311849, 311850, 311851, 311852, 311853, 311854, 311855, 311856, 311857, 311858, 311859, 311860, 311861, 311862, 311863, 311864, 311865, 311866, 311867, 311868, 311869, 311870, 311871, 311872, 311873, 311874, 311875, 311876, 311877, 311878, 311879, 311880, 311881, 311882, 311883, 311884, 311885, 311886, 311887, 311888, 311889, 311890, 311891, 311892, 311893, 311894, 311895, 311896, 311897, 311898, 311899, 311900, 311901, 311902, 311903, 311904, 311905, 311906, 311907, 311908, 311909, 311910, 311911, 311912, 311913, 311914, 311915, 311916, 311917, 311918, 311919, 311920, 311921, 311922, 311923, 311924, 311925, 311926, 311927, 311928, 311929, 311930, 311931, 311932, 311933, 311934, 311935, 311936, 311937, 311938, 311939, 311940, 311941, 311942, 311943, 311944, 311945, 311946, 311947, 311948, 311949, 311950, 311951, 311952, 311953, 311954, 311955, 311956, 311957, 311958, 311959, 311960, 311961, 311962, 311963, 311964, 311965, 311966, 311967, 311968, 311969, 311970, 311971, 311972, 311973, 311974, 311975, 311976, 311977, 311978, 311979, 311980, 311981, 311982, 311983, 311984, 311985, 311986, 311987, 311988, 311989, 311990, 311991, 311992, 311993, 311994, 311995, 311996, 311997, 311998, 311999, 312000, 312001, 312002, 312003, 312004, 312005, 312006, 312007, 312008, 312009, 312010, 312011, 312012, 312013, 312014, 312015, 312016, 312017, 312018, 312019, 312020, 312021, 312022, 312023, 312024, 312025, 312026, 312027, 312028, 312029, 312030, 312031, 312032, 312033, 312034, 312035, 312036, 312037, 312038, 312039, 312040, 312041, 312042, 312043, 312044, 312045, 312046, 312047, 312048, 312049, 312050, 312051, 312052, 312053, 312054, 312055, 312056, 312057, 312058, 312059, 312060, 312061, 312062, 312063, 312064, 312065, 312066, 312067, 312068, 312069, 312070, 312071, 312072, 312073, 312074, 312075, 312076, 312077, 312078, 312079, 312080, 312081, 312082, 312083, 312084, 312085, 312086, 312087, 312088, 312089, 312090, 312091, 312092, 312093, 312094, 312095, 312096, 312097, 312098, 312099, 312100, 312101, 312102, 312103, 312104, 312105, 312106, 312107, 312108, 312109, 312110, 312111, 312112, 312113, 312114, 312115, 312116, 312117, 312118, 312119, 312120, 312121, 312122, 312123, 312124, 312125, 312126, 312127, 312128, 312129, 312130, 312131, 312132, 312133, 312134, 312135, 312136, 312137, 312138, 312139, 312140, 312141, 312142, 312143, 312144, 312145, 312146, 312147, 312148, 312149, 312150, 312151, 312152, 312153, 312154, 312155, 312156, 312157, 312158, 312159, 312160, 312161, 312162, 312163, 312164, 312165, 312166, 312167, 312168, 312169, 312170, 312171, 312172, 312173, 312174, 312175, 312176, 312177, 312178, 312179, 312180, 312181, 312182, 312183, 312184, 312185, 312186, 312187, 312188, 312189, 312190, 312191, 312192, 312193, 312194, 312195, 312196, 312197, 312198, 312199, 312200, 312201, 312202, 312203, 312204, 312205, 312206, 312207, 312208, 312209, 312210, 312211, 312212, 312213, 312214, 312215, 312216, 312217, 312218, 312219, 312220, 312221, 312222, 312223, 312224, 312225, 312226, 312227, 312228, 312229, 312230, 312231, 312232, 312233, 312234, 312235, 312236, 312237, 312238, 312239, 312240, 312241, 312242, 312243, 312244, 312245, 312246, 312247, 312248, 312249, 312250, 312251, 312252, 312253, 312254, 312255, 312256, 312257, 312258, 312259, 312260, 312261, 312262, 312263, 312264, 312265, 312266, 312267, 312268, 312269, 312270, 312271, 312272, 312273, 312274, 312275, 312276, 312277, 312278, 312279, 312280, 312281, 312282, 312283, 312284, 312285, 312286, 312287, 312288, 312289, 312290, 312291, 312292, 312293, 312294, 312295, 312296, 312297, 312298, 312299, 312300, 312301, 312302, 312303, 312304, 312305, 312306, 312307, 312308, 312309, 312310, 312311, 312312, 312313, 312314, 312315, 312316, 312317, 312318, 312319, 312320, 312321, 312322, 312323, 312324, 312325, 312326, 312327, 312328, 312329, 312330, 312331, 312332, 312333, 312334, 312335, 312336, 312337, 312338, 312339, 312340, 312341, 312342, 312343, 312344, 312345, 312346, 312347, 312348, 312349, 312350, 312351, 312352, 312353, 312354, 312355, 312356, 312357, 312358, 312359, 312360, 312361, 312362, 312363, 312364, 312365, 312366, 312367, 312368, 312369, 312370, 312371, 312372, 312373, 312374, 312375, 312376, 312377, 312378, 312379, 312380, 312381, 312382, 312383, 312384, 312385, 312386, 312387, 312388, 312389, 312390, 312391, 312392, 312393, 312394, 312395, 312396, 312397, 312398, 312399, 312400, 312401, 312402, 312403, 312404, 312405, 312406, 312407, 312408, 312409, 312410, 312411, 312412, 312413, 312414, 312415, 312416, 312417, 312418, 312419, 312420, 312421, 312422, 312423, 312424, 312425, 312426, 312427, 312428, 312429, 312430, 312431, 312432, 312433, 312434, 312435, 312436, 312437, 312438, 312439, 312440, 312441, 312442, 312443, 312444, 312445, 312446, 312447, 312448, 312449, 312450, 312451, 312452, 312453, 312454, 312455, 312456, 312457, 312458, 312459, 312460, 312461, 312462, 312463, 312464, 312465, 312466, 312467, 312468, 312469, 312470, 312471, 312472, 312473, 312474, 312475, 312476, 312477, 312478, 312479, 312480, 312481, 312482, 312483, 312484, 312485, 312486, 312487, 312488, 312489,





## LEGEND

	RIO SAN JOSE RIGHT OF WAY
	SIDING TRACK RAIL
	MAIN TRACK RAIL
	TRACT FARM BOUNDARY
	ROAD RIGHT OF WAY
	PHASE 1 SPEC BUILDING SITE
	TRANSMIX FACILITY (50 AC) RAIL PRODUCTS/RECYCLING
	TRUCKING TERMINAL (50 AC) 700 UNITS LATER MANUFACTURING
	FUTURE WAREHOUSE/ DISTRIBUTION FOOD/ BEVERAGE MANUFACTURING
	FUTURE RAIL RELATED TRANSLOAD/ AGRICULTURAL UNIT TRAIN
	ROADWAY

### **Areas where County can support this project:**

- Continued support for economic development and projects like these. Remember it is a team sport.

## Questions?

## Investors?

## Support?

---

- Promote good information on the project with the community, stakeholders, and partners.
- Understand and be patient with client confidentiality and disclosure agreements.
- Prioritize Phase I build-out on County Infrastructure Capital Improvement Plan (ICIP).
- Provide support including in the form of Letters of Support/Commitment for grant applications.
- Consider when/if necessary matching fund towards these grant applications, if needed.





10a.

# Motorcycle Awareness

Proclaiming May Motorcycle  
Awareness Month





## PROCLAMATION MAY IS MOTORCYCLE AWARENESS MONTH

*WHEREAS*, motorcycles are used as a regular means of transportation for commuting, touring and recreation in and around Cibola, New Mexico; and

*WHEREAS*, the Cibola scenic roadways make motorcycling a very popular destination for riders from around the country; and

*WHEREAS*, the safe operation of a motorcycle requires the use of acquired skills developed through a combination of training and experience, the use of good judgement, and thorough knowledge of traffic laws and licensing requirements; and

*WHEREAS*, it is imperative that the residents of Cibola be aware, show consideration and share the road with motorcycles on the streets and highways and recognize the importance of motorcycle safety; and

*WHEREAS*, the National Highway Traffic Safety Administration has declared May as "Motorcycle Awareness Month"; it is the desire of this County Commission to join the NHTSA in raising awareness of the growing number of motorcyclists on Cibola County's roadways in order to help prevent accidents and most importantly, save lives.

NOW, THEREFORE, on behalf of the County Commission of Cibola County, I do hereby proclaim the Month of May, 2018 to be:

**MOTORCYCLE AWARENESS MONTH** in Cibola County, and urge our citizens to be observant, courteous and knowledgeable about motorcycle usage in our community. **APPROVED, ADOPTED, AND PASSED** on this 22<sup>nd</sup> day of April 2021.

### BOARD OF COUNTY COMMISSIONERS

\_\_\_\_\_  
DANIEL TORREZ, CHAIRMAN

\_\_\_\_\_  
MARTHA GARCIA, 1<sup>ST</sup> VICE-CHAIR

\_\_\_\_\_  
CHRISTINE LOWERY, 2<sup>ND</sup> VICE-CHAIR

\_\_\_\_\_  
ROBERT WINDHORST, COMMISSIONER

\_\_\_\_\_  
RALPH LUCERO, COMMISSIONER

ATTEST BY:

\_\_\_\_\_  
MICHELLE E. DOMINGUEZ, CIBOLA COUNTY CLERK



10b.

# Resolution 21-26

FY21 Budget Adjustment No.8

# Cibola County



Kate Fletcher  
County Manager

## Cibola County Commission

Daniel J. Torrez, Chairman  
Martha Garcia, 1<sup>st</sup> Vice-Chair  
Christine Lowery, 2<sup>nd</sup> Vice-Chair  
Ralph Lucero, Commissioner  
Robert Windhorst, Commissioner

700 E. Roosevelt Ave., Suite 50

Grants, New Mexico 87020

Phone (505) 287-9431 – Fax (505) 285-5434

## Resolution No. 21-26 – BAR # 8

### **Fiscal Year 2021**

**WHEREAS,** the Board of County Commissioners of the County of Cibola is the duly constituted governing body of the County and serves *ex officio* as the County Board of Finance with authority for establishing, monitoring, and adjusting the County's budget; and

**WHEREAS,** budget adjustments are required to establish correct beginning cash balances; allow for new transfers; to allow for budget increases and decreases to revenues and expenditures to offset any unanticipated revenues and/or expenditures; and to correct amounts when required; and

**WHEREAS,** the budget adjustments and the associated line items with amounts stated on the attached, *Schedule of Budget Adjustments 21-26A* is essential.

**NOW, THEREFORE, BE IT RESOLVED BY THE BOARD OF COUNTY COMMISSIONERS of the COUNTY OF CIBOLA, STATE OF NEW MEXICO, ex officio COUNTY BOARD OF FINANCE** that the adjustments included in this document are deemed necessary to the operations of the County for the 2021 fiscal year ending June 30, 2021.

**PASSED, APPROVED and ADOPTED** by the governing body at a regular meeting on the 22nd day of April 2021.

### **THE BOARD OF COUNTY COMMISSIONERS:**

\_\_\_\_\_  
Daniel Torrez, Chairman

\_\_\_\_\_  
Martha Garcia, 1<sup>st</sup> Vice-Chair

\_\_\_\_\_  
Dr. Christina Lowery, 2<sup>nd</sup> Vice-Chair

### **ATTEST:**

\_\_\_\_\_  
Michelle E Dominguez, County Clerk

\_\_\_\_\_  
Robert Windhorst, Commissioner

\_\_\_\_\_  
Ralph Lucero, Commissioner



Schedule of Budget Adjustments - 21-26  
BAR #8

<b>ENTITY NAME:</b> Cibola County <b>FISCAL YEAR:</b> FY 2020-21 <b>RESOLUTION #:</b> 21-26 <b>BAR SCHEDULE:</b> 21-26A											
TYPE OF LOCAL OR STATE (S)	COUNTY DEPARTMENT	REVENUE EXPENDITURE TRANSFER (TO or FROM)	DFA ACCOUNT #	CIBOLA COUNTY ACCOUNT#	DESCRIPTION OF ACCOUNT	APPROVED BUDGET	ADJUSTMENT	ADJUSTED BUDGET	PURPOSE		
L	IT	Expenditure		401-004-412-00098	Training & Staff Development	\$3,200.00		\$3,200.00	Reduce to realign budget authority to accounts below		
L	IT	Expenditure		401-004-412-00013	Rental of Equipment	\$1,700.00		\$1,700.00	Copier lease higher than planned for		
L	IT	Expenditure		401-004-412-00009	Office Equipment & Supplies	\$500.00		\$500.00	Need to get Label writer and labels		
S	Fire Marshal	Expenditure		604-018-461-00082	Safety Equipment	\$10,000.00		\$10,000.00	Need increase for additional PPE		
L	Fire Marshal	Expenditure		604-018-461-00069	Dues Fees & Subscriptions	\$10,000.00		\$10,000.00	Reduce to realign budget authority to other account		
L	Fire Marshal	Expenditure		604-018-461-00009	Office Supplies	\$12,000.00		\$12,000.00	Increase for additional routine supplies.		
L	Sheriff	Expenditure		401-005-408-00098	Training & Staff Development	\$13,750.00		\$13,750.00	Reduce to realign budget authority to other accounts		
L	Sheriff	Expenditure		401-005-408-00010	Mileage & Per Diem	\$5,000.00		\$5,000.00	Reduce to realign budget authority to other accounts		
L	Sheriff	Expenditure		401-005-408-00005	Overtime Salaries	\$90,000.00		\$90,000.00	Reduce to realign budget authority to other accounts		
L	Sheriff	Expenditure		401-005-408-00012	Equipment Maintenance & Repair	\$2,500.00		\$2,500.00	Went over account by \$10		
L	Sheriff	Expenditure		401-005-408-00013	Rental of Equipment	\$5,000.00		\$5,000.00	Need increase for additional repair supplies. Repeater		
L	Sheriff	Expenditure		401-005-408-00072	Law Enforcement Liability Ins.	\$185,000.00		\$185,000.00	service used most of the budget		
L	Sheriff	Expenditure		401-005-408-00124	Contractual Services	\$0.00		\$0.00	Underbudgeted this account.		
L	Maintenance	Expenditure		401-010-403-00012	Equipment Maintenance & Repair	\$94,175.00		\$94,175.00	Needed to pay extra for additional claims		
L	Maintenance	Expenditure		401-010-403-00012	Equipment Maintenance & Repair	\$20,000.00		\$20,000.00	Reduce to realign budget authority to other account		
L	Maintenance	Expenditure		401-010-403-00046	Janitorial Supplies	\$7,500.00		\$7,500.00	Increase for additional routine supplies due to covid		
S	Bluewater VFD	Expenditure		408-018-422-00012	Equipment Maintenance & Repair	\$8,500.00		\$8,500.00	cleaning		
S	Bluewater VFD	Expenditure		408-018-422-00025	Utilities	\$15,000.00		\$15,000.00	Fixing trucks and gear		
L	Treasurer	Expenditure		401-004-406-00009	Office Equipment & Supplies	\$6,000.00		\$6,000.00	Increased costs not budgeted for addition		
L	Treasurer	Expenditure		401-004-406-00006	Postage	\$10,500.00		\$10,500.00	Reduce to realign budget authority to other account		
L	Treasurer	Expenditure		401-004-406-00010	Mileage & Per Diem	\$6,000.00		\$6,000.00	Increase postage for delinquent Tax notice mailing		
L	Treasurer	Expenditure		401-004-406-00008	Printing & Publishing	\$10,500.00		\$10,500.00	Reduce to realign budget authority to other account		
L	Road	Expenditure		402-015-416-00010	Mileage & Per Diem	\$1,000.00		\$1,000.00	Increase printing for delinquent Tax notice mailing		
L	Road	Expenditure		402-015-416-00024	Grounds Maintenance & Imp.	\$4,500.00		\$4,500.00	Reduce to realign budget authority to other account		
L	Road	Expenditure		402-015-416-00075	Equipment Repairs	\$50,000.00		\$50,000.00	Reduce to realign budget authority to other account		
L	Road	Expenditure		402-015-416-00076	Equipment Operations Expense	\$85,000.00		\$85,000.00	Reduce to realign budget authority to other account		
L	Road	Expenditure		402-015-416-00098	Training & Staff Development	\$1,000.00		\$1,000.00	Reduce to realign budget authority to other account		
L	Road	Expenditure		402-015-416-00127	Uniforms	\$4,000.00		\$4,000.00	Reduce to realign budget authority to other account		
L	Road	Expenditure		402-015-416-00077	Tools & Supplies	\$10,000.00		\$10,000.00	Reduce to realign budget authority to other account		
S	General Fund	Transfer		401-011-499-00413	From 401 to 413	\$0.00		\$0.00	To purchase county tools for mechanics		
S	Laguna EMS	Transfer		413-021-499-00401	From 401 to 413	\$0.00		\$0.00	Temporary Loan from general fund to cover deficit. Will reimburse GF when distribution comes in.		
L	Quartz Hill	Expenditure		607-045-456-00101	Professional Services	\$263,500.00		\$263,500.00	Temporary Loan from general fund to cover deficit. Will reimburse GF when distribution comes in.		
L	Quartz Hill	Expenditure		607-045-456-00301	Labor	\$87,000.00		\$87,000.00	Align budget to be more accurate with description		
L	Quartz Hill	Expenditure		607-045-456-00302	Materials	\$257,000.00		\$257,000.00	Align budget to be more accurate with description		
L	Quartz Hill	Expenditure		607-045-456-00303	Equipment	\$87,000.00		\$87,000.00	Align budget to be more accurate with description		
L	Quartz Hill	Expenditure		607-045-456-00607	Construction	\$0.00		\$0.00	Align budget to be more accurate with description		

ATTEST:

County Clerk

Date

Board Chairman

Date



10c.

# Resolution 21-27

Waiving Liquor License Tax





**BOARD OF COUNTY COMMISSIONERS  
RESOLUTION 21-27**

**A RESOLUTION DECLINING TO IMPOSE A LIQUOR LICENSE TAX AND  
PROVIDING REMEDY FOR COLLECTION**

**WHEREAS**, the Cibola County Board of Commissioners met upon notice of meeting duly published at the Cibola County Administration Building, 700 East Roosevelt Ave., Suite 50, Grants, NM 87020, on April 22, 2021, at 5:00 p.m. as required by law; and,

**WHEREAS**, the Boards of County Commissions composing local option districts are empowered by resolution duly adopted on or before the first day of June of each year to impose and annual, non-prohibitive license tax upon the privileges of persons holding state licenses under the provisions of the Liquor Control Act to operate within such counties, outside of the municipalities that are local option districts, as retailers, dispensers, canopy licensees, restaurant licensees or club licensees. NMSA 1978, Section 7-24-2.

**WHEREAS**, Cibola County, as well as the incorporated municipalities of Grants and Milan, is a Local Option District.

**WHEREAS**, Governor Michelle Lujan Grisham signed Senate Bill 2, 2021 waiving Liquor License Fees for 2021.

**WHEREAS**, Cibola County has been hit particularly hard by the pandemic and the Board of County Commissioners does not feel it would be just to impose liquor license taxes this year.

**NOW, THEREFORE BE IT RESOLVED** by the Board of County Commissioners of Cibola County that a Liquor License Tax is not imposed for the year 2021.



**APPROVED, ADOPTED, AND PASSED** on this 22<sup>nd</sup> day of April 2021.

**BOARD OF COUNTY COMMISSIONERS**

---

Daniel Torrez, Chairperson

---

Martha Garcia, 1<sup>st</sup> Vice-Chairperson

---

Christine Lowery, 2nd Vice-Chairperson

---

Ralph Lucero, Commissioner

---

Robert Windhorst, Commissioner

ATTEST:

---

Michelle E. Dominguez  
Cibola County Clerk



10d.

# Budget Workshop

Choosing a date and time




10e.(a.)

# Requisitions Over \$20,000

Road Dept.-Tools and Supplies



# REQUISITION ORDER

		<b>DATE :</b>		<b>DEPARTMENT:</b>		<b>QUOTE OBTAINED BY:</b>			
		April 14, 2021		Road Dept.		Aaron Wheeler			
				<b>QUOTE #1</b>		<b>QUOTE #2</b>		<b>QUOTE #3</b>	
		<b>VENDOR NAME:</b>		Grants Auto & Truck Parts					
		<b>CONTACT NAME:</b>		Landon					
		<b>PHONE:</b>		505-287-9447					
		<b>FAX:</b>		505-287-5670					
<b>NO.</b>	<b>DESCRIPTION</b>	<b>UNIT COST</b>	<b>EXTENSION</b>	<b>UNIT COST</b>	<b>EXTENSION</b>	<b>UNIT COST</b>	<b>EXTENSION</b>		
1	JCS-1258mas Tool Sets	16402.23	16,402.23		-		-		
1	AW18 18 in. Adjustable Wrench	59.39	59.39		-		-		
1	AW24 24 in. Adjustable Wrench	126.00	126.00		-		-		
1	3550 Hose Cutter	19.87	19.87		-		-		
1	2391 Retrieving Tool	9.59	9.59		-		-		
1	77-3508 Oil Filter Wrench	32.01	32.01		-		-		
1	77-3368 3 Jaw Oil Fil/Wrench	21.75	21.75		-		-		
1	77-2595 Oil Filter Wrench	29.51	29.51		-		-		
1	2115TIMAX 3 8 in. Composte Impact	202.50	202.50		-		-		
1	2130 1 2 in. Imp 550 FT - LB	210.72	210.72		-		-		
1	109xpa 3 8 in. Club Style RATC	172.62	172.62		-		-		
1	121-K6 Super Duty Air Hammer	125.80	125.80		-		-		
1	62613 Mini Metal Die Bogo	70.19	70.19		-		-		
1	6786 Drill	125.40	125.40		-		-		
3	6-9300 Swivel	14.99	44.97		-		-		
3	6-9300Swivel	14.99	44.97		-		-		
2	6-9301 Swivel	19.67	39.34		-		-		
1	61-0208 Socket Set	67.63	67.63		-		-		
1	61-0210 Socket Set	97.79	97.79		-		-		
1	61-0502 Socket Set	152.37	152.37		-		-		
1	RX5508Chuc Tool Box Cart	1382.10	1,382.10		-		-		
1	RX5512Rcuc Tool Box Cart	1711.43	1,711.43		-		-		
1	BDTIB46 46P Mstr. Starbit Set	184.90	184.90		-		-		
2	145 Pinch Off Pliers	18.73	37.46		-		-		
Continued on 2nd page			-		-		-		
<b>SUBTOTAL FOR SELECTED ITEMS</b>		21,370.54							
<b>TOTAL LABOR/ SERVICE COSTS</b>									
<b>TOTAL GROSS RECEIPTS TAX</b>									
<b>TOTAL SHIPPING/ FREIGHT COSTS</b>									
<b>GRAND TOTAL</b>		21,370.54							
<b>VENDOR</b>	Grants Auto & Truck Parts	<b>REASON SELECTED</b>		←					
<b>ADDRESS</b>	1000 W. Santa Fe Ave Grants, New Mexico 87020	<b>CONTRACT/BID/RFP #</b>							
<b>PURCHASING AGENT ENDORSEMENT</b>	<b>CERTIFICATION</b>	<b>ESTIMATED DELIVERY</b>							
<p>With my signature, I hereby certify that all goods/services requested are necessary to properly conduct the operations of this department, and that all procurement has been conducted according to purchasing policies approved by the Cibola County Board of Commissioners.</p>	<p>If all three signatures are not obtained the purchase cannot move forward</p>	<b>PURCHASE ORDER #</b>							
		<b>FUND NAME &amp; LINE ITEM #</b>		<b>AMOUNT</b>					
		402-015-416-00077		\$ 21,370.54					
		Page 1 of 2							
		<b>DEPARTMENT HEAD SIGNATURE</b>		<b>DESIGNEE SIGNATURE</b>		<b>FINANCE SIGNATURE</b>			
		<i>[Signature]</i>		<i>[Signature]</i>					

PLEASE REMEMBER ANY REQUISITIONS OVER \$500.00 NOW REQUIRE 3 HARD QUOTES. ANY REQUISITION \$10,000.00 OR MORE WILL NEED TO GO ON THE AGENDA FOR COMMISSION APPROVAL. IF USING STATE CONTRACT PLEASE LIST CONTRACT # ABOVE AS WELL AS THE FIRST 4 PAGES OF THE STATE CONTRACT, OTHERWISE IT WILL BE SENT BACK



PLEASE REMEMBER ANY REQUISITIONS OVER \$500.00 NOW REQUIRE 3 HARD QUOTES. ANY REQUISITION \$10,000.00 OR MORE WILL NEED TO GO ON THE AGENDA FOR COMMISSION APPROVAL. IF USING STATE CONTRACT PLEASE LIST CONTRACT # ABOVE AS WELL AS THE FIRST 4 PAGES OF THE STATE CONTRACT, OTHERWISE IT WILL BE SENT BACK



GRANTS AUTO AND TRUCK PARTS  
1403 US HWY 66  
PO BOX 2659  
MILAN, NM 87021

ACCT #	SOLD TO	DATE	TIME
670	CIBOLA COUNTY 700 E. ROOSEVELT, SUITE 50 GRANTS, NM 87020	04/01/2021	06:24
SR #		STORE #	EMP #
0		900007290	14 LONDON

PART NUMBER	LN	DESCRIPTION	QUANTITY	LIST	PRICE	TOTAL
JCS-1258MAS	PTO	TOOL SETS	1.00	43,748.48	16402.2300	16,402.23
AW18	CHT	18IN ADJUSTABLE WRENC	1.00	159.16	59.3900	59.39
AW24	CHT	24IN ADJUSTABLE WRENC	1.00	289.98	126.0000	126.00
3550	SER	HOSE CUTTER	1.00	60.93	19.8700	19.87
2391	SER	RETRIEVING TOOL	1.00	29.88	9.5900	9.59
77-3508	SER	OIL FILTER WRENCH	1.00	97.73	32.0100	32.01
77-3368	SER	3 JAW OIL FIL/WRENCH	1.00	68.98	21.7500	21.75
77-2595	SER	OIL FILTER WRENCH	1.00	91.98	29.5100	29.51
2115TIMAX	IR	3 8IN COMPOSITE IMPACT	1.00	646.71	202.5000	202.50
2130	IR	1 2IN IMP 550 FT-LB	1.00	543.21	210.7200	210.72
109XPA	IR	3 8IN CLUB STYLE RATC	1.00	444.73	172.6200	172.62
121-K6	IR	SUPER DUTY AIR HAMMER	1.00	324.30	125.8000	125.80
62613	NPT	MINI METAL DIE BOGO	1.00	203.07	70.1900	70.19
6786	NPT	DRILL	1.00	413.20	125.4000	125.40
6-9300	NPT	SWIVEL	3.00	30.34	14.9900	44.97

Continued

\*\*\* Plus Applicable Taxes. \*\*\*  
\*\*\* Prices Subject to Change Without Notice. \*\*\*

\* \* THIS IS NOT AN INVOICE \* \*

GRANTS AUTO AND TRUCK PARTS  
1403 US HWY 66  
PO BOX 2659  
MILAN, NM 87021

ACCT #	SOLD TO	DATE	TIME
670	CIBOLA COUNTY 700 E. ROOSEVELT, SUITE 50 GRANTS, NM 87020	04/01/2021	06:24
SR #		STORE #	EMP #
0		900007290	14 LANDON

PART NUMBER	LN	DESCRIPTION	QUANTITY	LIST	PRICE	TOTAL
6-9300	NPT	SWIVEL	3.00	30.34	14.9900	44.97
6-9301	NPT	SWIVEL	2.00	64.45	19.6700	39.34
61-0208	NPT	SOCKET SET	1.00	222.85	67.6300	67.63
61-0210	NPT	SOCKET SET	1.00	322.23	97.7900	97.79
61-0502	NPT	SOCKET SET	1.00	502.07	152.3700	152.37
RX5508CHUC	ETR	TOOL BOX CART	1.00	3,733.64	1382.1000	1,382.10
RX5512RCUC	ETR	TOOL BOX CART	1.00	4,992.91	1711.4300	1,711.43
BSTB46	CHT	46P MSTR STABBIT SET	1.00	572.68	184.9000	184.90
145	SER	PINCH-OFF PLIERS	2.00	57.48	18.7300	37.46
PBH32	CHT	32 LONG X 1 2	1.00	136.83	44.6200	44.62
PBH36	CHT	36 LONG X 5 8	1.00	199.62	65.0900	65.09
37004	MMM	NOSECAP	1.00	82.20	30.9600	30.96
LHTS7	CHT	7PC L-TORX KEY SET	1.00	104.63	33.8400	33.84
TKS813	CHT	13PC TORX KEY SET	1.00	56.33	17.9200	17.92
776-9115	BK	9 PC STAR WRENCH SET	1.00	19.60	5.9400	5.94

Continued

\*\*\* Plus Applicable Taxes. \*\*\*  
\*\*\* Prices Subject to Change Without Notice. \*\*\*

\*\*\* THIS IS NOT AN INVOICE \*\*\*



\* \* Q U O T E \* \*

GRANTS AUTO AND TRUCK PARTS  
1403 US HWY 66  
PO BOX 2659  
MILAN, NM 87021

ACCT #	SOLD TO	DATE	TIME
670	CIBOLA COUNTY	04/01/2021	06:24
SR #	700 E. ROOSEVELT, SUITE 50	STORE #	EMP #
0	GRANTS, NM 87020	900007290	14 LONDON

PART NUMBER	LN	DESCRIPTION	QUANTITY	LIST	PRICE	TOTAL
41540	SER	BRK CALIPER PIST KIT	1.00	132.23	67.9900	67.99
277	SER	CALIPER PRESS	1.00	125.33	57.9900	57.99
776-8025	BK	BELT TOOL SET	1.00	103.48	44.9900	44.99
776-8030	BK	FAN CLUTCH TOOL	1.00	206.98	89.9900	89.99
776-9139	BK	FANCLUTCH PULLEY TOOL	1.00	55.09	25.9900	25.99

21,855.86

TOTAL ----->

\*\*\* Plus Applicable Taxes. \*\*\*  
\*\*\* Prices Subject to Change Without Notice. \*\*\*

\* \* THIS IS NOT AN INVOICE \* \*