

Cibola County Commission

Christine Lowery, Chair
Ralph Lucero, 1st Vice-Chair
Daniel J. Torrez, 2nd Vice-Chair
Martha Garcia, Commissioner
Robert Windhorst, Commissioner

Cibola County
700 E. Roosevelt Ave., Suite 50
Grants, New Mexico 87020
Phone (505) 287-9431 – Fax (505) 285-5434



Resolution No. 2024-27

Fiscal Year 2024

Resolution Authorizing Auction of Vehicles

WHEREAS, pursuant to NMSA 1978 Section 4-38-1 the powers of a county as a body politic and corporate shall be exercised by a board of county commissioners; and,

WHEREAS, NMSA 1978, Section 4-38-13 provides that board of county commissioners shall have power at any session to make such orders concerning the property belonging to the county as they may deem expedient; and,

WHEREAS, NMSA 1978, Section 13-6-2 provides that the County give notification at least thirty days prior to its action making the deletion by sending a copy of its official finding and the proposed disposition of the property to the state auditor and the appropriate approval authority designated in Section 13-6-2 NMSA 1978, duly sworn and subscribed under oath by each member of the authority approving the action.; and,

WHEREAS, NMSA 1978, Section 13-6-2 provides, in pertinent part, that the "sale or disposition of real or tangible personal property having a current resale value of more than five thousand dollars (\$5,000) may be made by a . . . local public body. . . if the sale or disposition has been approved by . . . the local government division of the department of finance and administration for local public bodies; and,

WHEREAS, the County is in possession of 9 vehicles, VIN #'s 2C3CDXAT2GH293364, 1FM5K8AR0EGA28712, 6G3NS5U27EL952219, 1GC1KVC86CF186240, 1C6RD7KT6CS339549, 1GNEC03097R323842, 1FMZU72K53UA31868, 1FMZU72K13UA31866, 2GCDG15H4K4163029 that were utilized in the Sheriff Department, Bluewater VFD, Lobo Canyon VFD and Fence Lake VFD and are no longer needed by the County and are considered obsolete, worn out, and are unusable; and,

NOW THEREFORE BE IT RESOLVED by the Board of County Commissioners of Cibola County that it authorizes the sale of the vehicles and equipment, contingent upon securing the approval of the local government division of the department of finance and administration and sending notification to the office of the state auditor; and,

WHEREAS, the disposition of property descriptions and information stated on the attachment labeled **"Personal Property To Be Auctioned Per Resolution #2024-27 Attachment 1"**.

PASSED, APPROVED and ADOPTED by the governing body at its regular meeting on the 25th day of April 2024.



Cibola County Personal Property To Be Auctioned

| | |
|--------------------------------|-------------------------------|
| Department | Sheriff Dept. |
| Purpose for Disposition | End of Service - High mileage |
| Year Manufactured | 2016 |
| Make / Model | Dodge Charger |
| VIN / Serial Number | 2C3CDXAT2GH293364 |
| Hours Used / Mileage | 137,268 |
| Current Resale or Market Value | \$0 |
| Opening Bid | \$500 |
| Method of Disposition | Auction |

| | |
|--------------------------------|-------------------------------|
| Department | Sheriff Dept. |
| Purpose for Disposition | End of Service - High mileage |
| Year Manufactured | 2014 |
| Make / Model | Ford Explorer |
| VIN / Serial Number | 1FM5K8AR0EGA28712 |
| Hours Used / Mileage | 164,319.0 |
| Current Resale or Market Value | \$0 |
| Opening Bid | \$500 |
| Method of Disposition | Auction |

| | |
|--------------------------------|-------------------------------|
| Department | Sheriff Dept. |
| Purpose for Disposition | End of Service - High mileage |
| Year Manufactured | 2014 |
| Make / Model | Chevy Caprice |
| VIN / Serial Number | 6G3N5SU27EL952219 |
| Hours Used / Mileage | 173,815.0 |
| Current Resale or Market Value | \$0 |
| Opening Bid | \$500 |
| Method of Disposition | Auction |

| | |
|--------------------------------|-------------------------------|
| Department | Sheriff Dept. |
| Purpose for Disposition | End of Service - High mileage |
| Year Manufactured | 2012 |
| Make / Model | Dodge Ram 1500 |
| VIN / Serial Number | 1C6RD7KT6CS339549 |
| Hours Used / Mileage | Unknown |
| Current Resale or Market Value | \$0 |
| Opening Bid | \$500 |
| Method of Disposition | Auction |

| | |
|--------------------------------|-------------------------------|
| Department | Sheriff Dept. |
| Purpose for Disposition | End of Service - High mileage |
| Year Manufactured | 2012 |
| Make / Model | Chevy Silverado 2500 |
| VIN / Serial Number | 1GC1KVC86CF186240 |
| Hours Used / Mileage | Unknown |
| Current Resale or Market Value | \$0 |
| Opening Bid | \$500 |
| Method of Disposition | Auction |

| | |
|--------------------------------|-------------------------------|
| Department | Bluewater VFD |
| Purpose for Disposition | End of Service - High mileage |
| Year Manufactured | 2007 |
| Make / Model | Chevy Tahoe |
| VIN / Serial Number | 1GNEC03097R323842 |
| Hours Used / Mileage | 190,504 |
| Current Resale or Market Value | \$0 |
| Opening Bid | \$500 |
| Method of Disposition | Auction |

| | |
|--------------------------------|-------------------------------|
| Department | Lobo Canyon VFD |
| Purpose for Disposition | End of Service - High mileage |
| Year Manufactured | 2003 |
| Make / Model | Ford Explorer |
| VIN / Serial Number | 1FMZU72K53UA31868 |
| Hours Used / Mileage | 193,541 |
| Current Resale or Market Value | \$0 |
| Opening Bid | \$500 |
| Method of Disposition | Auction |



| | |
|--------------------------------|------------------------------|
| Department | Fence Lake VFD |
| Purpose for Disposition | End of Service - High milage |
| Year Manufactured | 2003 |
| Make / Model | Ford Explorer |
| VIN / Serial Number | 1FMZU72K13UA31866 |
| Hours Used / Mileage | 216,294 |
| Current Resale or Market Value | \$0 |
| Opening Bid | \$500 |
| Method of Disposition | Auction |

| | |
|--------------------------------|------------------------------|
| Department | Fence Lake VFD |
| Purpose for Disposition | End of Service - High milage |
| Year Manufactured | 1989 |
| Make / Model | Chevy Van |
| VIN / Serial Number | 2GCDG15H4K4163029 |
| Hours Used / Mileage | 28,326 |
| Current Resale or Market Value | \$0 |
| Opening Bid | \$500 |
| Method of Disposition | Auction |

| | |
|--------------------------------|--|
| Department | |
| Purpose for Disposition | |
| Year Manufactured | |
| Make / Model | |
| VIN / Serial Number | |
| Hours Used / Mileage | |
| Current Resale or Market Value | |
| Opening Bid | |
| Method of Disposition | |

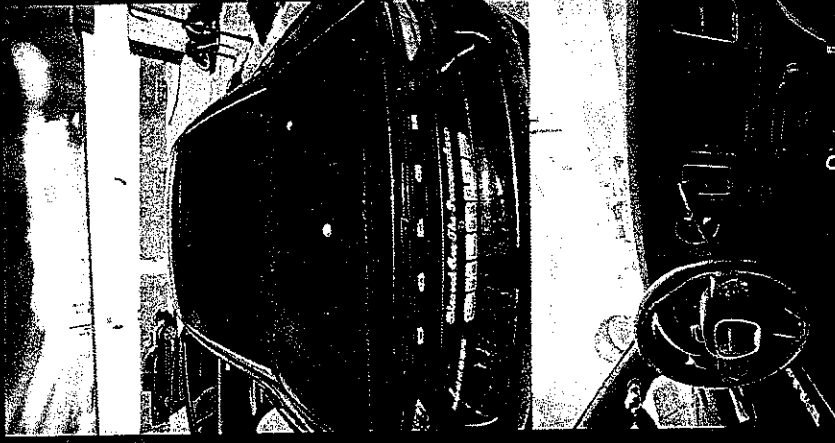
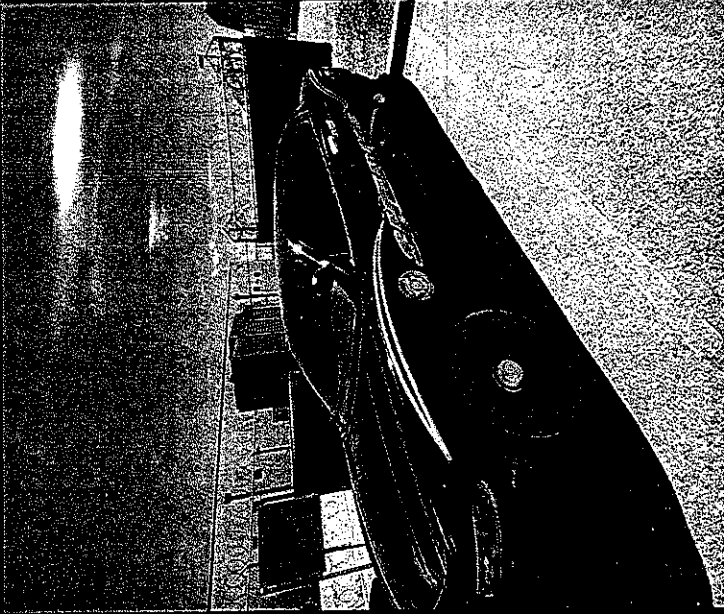
| | |
|--------------------------------|--|
| Department | |
| Purpose for Disposition | |
| Year Manufactured | |
| Make / Model | |
| VIN / Serial Number | |
| Hours Used / Mileage | |
| Current Resale or Market Value | |
| Opening Bid | |
| Method of Disposition | |

| | |
|--------------------------------|--|
| Department | |
| Purpose for Disposition | |
| Year Manufactured | |
| Make / Model | |
| VIN / Serial Number | |
| Hours Used / Mileage | |
| Current Resale or Market Value | |
| Opening Bid | |
| Method of Disposition | |

| | |
|--------------------------------|--|
| Department | |
| Purpose for Disposition | |
| Year Manufactured | |
| Make / Model | |
| VIN / Serial Number | |
| Hours Used / Mileage | |
| Current Resale or Market Value | |
| Opening Bid | |
| Method of Disposition | |

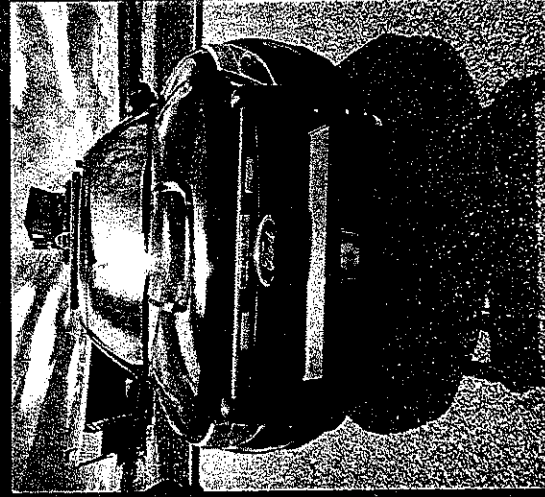
| | |
|--------------------------------|--|
| Department | |
| Purpose for Disposition | |
| Year Manufactured | |
| Make / Model | |
| VIN / Serial Number | |
| Hours Used / Mileage | |
| Current Resale or Market Value | |
| Opening Bid | |
| Method of Disposition | |



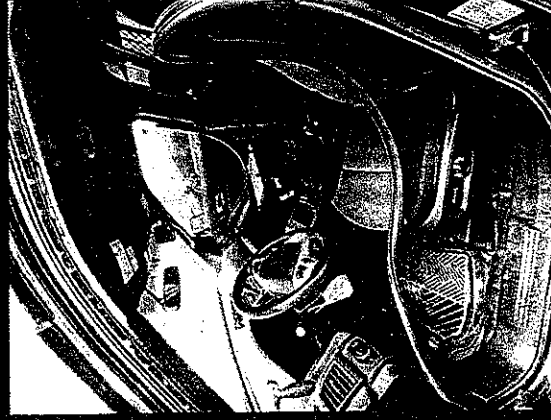


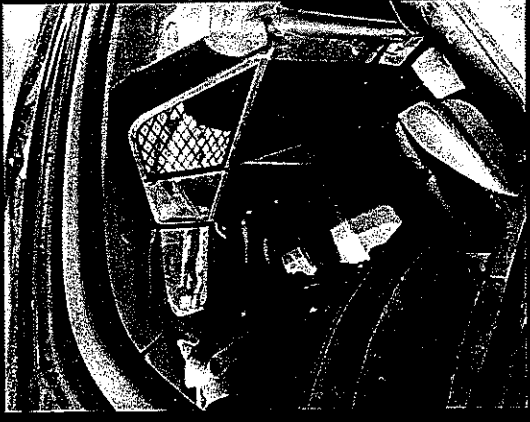
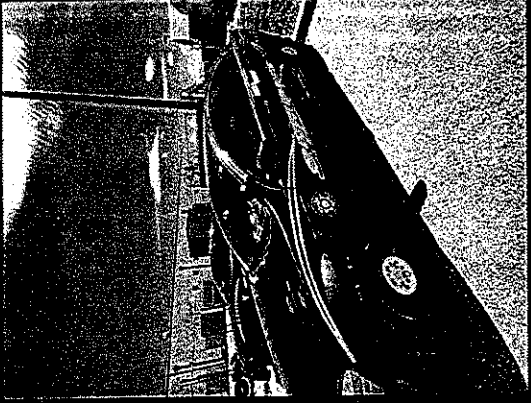
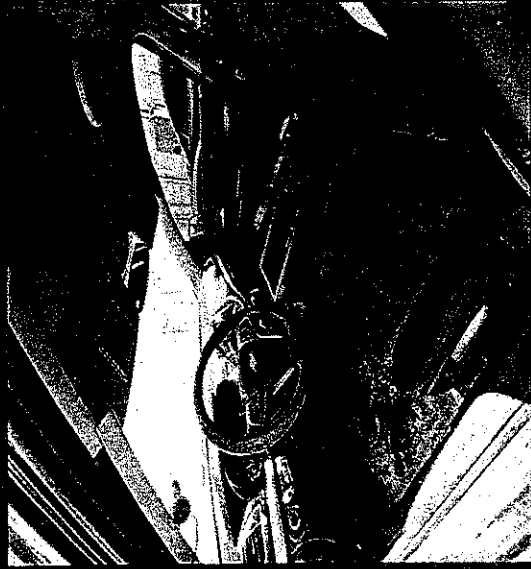
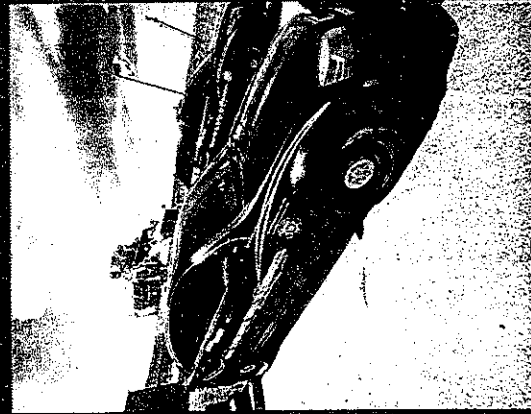
2016 DODGE CHARGER 2C3CDXAT2GH293364



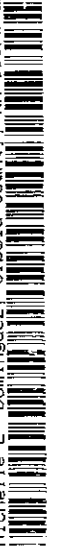


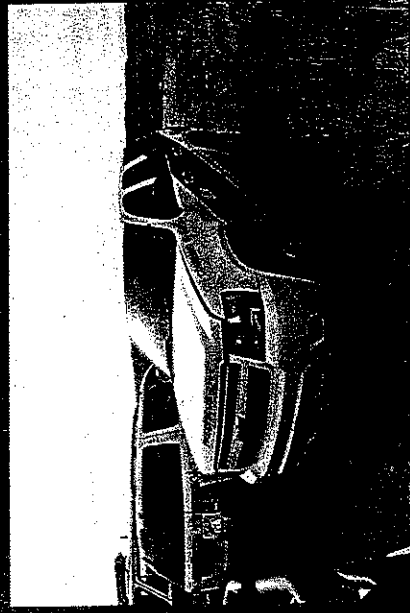
2014 FORD EXPLORER 1FM5K8AR0EGA28712



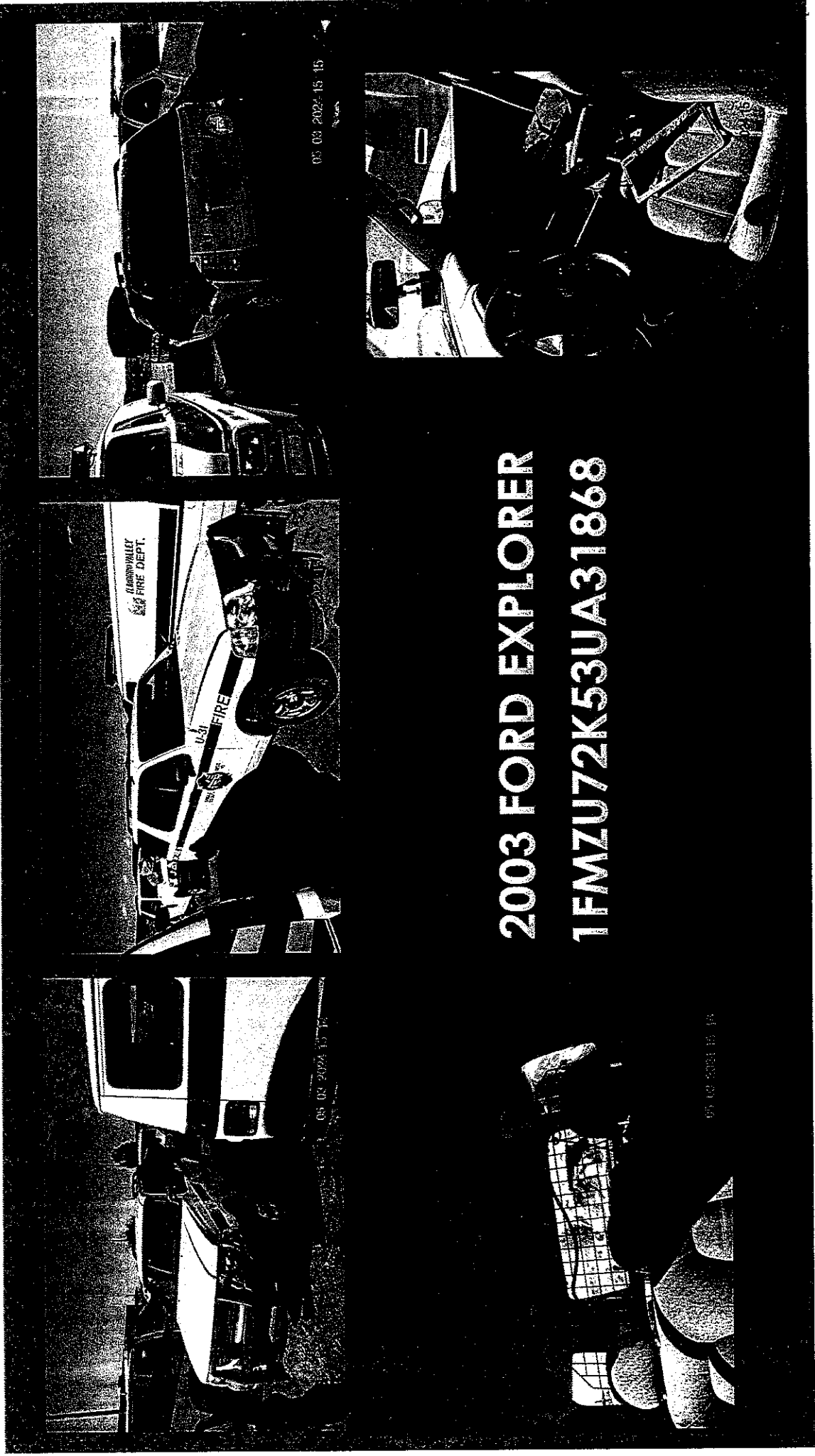


2014 CHEVY CAPRICE
6G3NS5U27EL952219

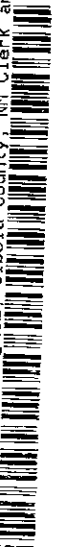


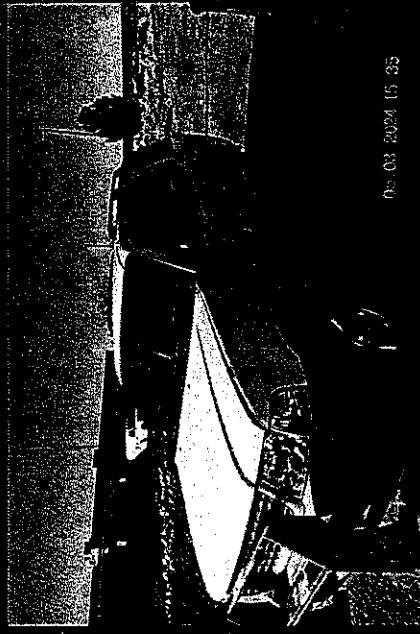
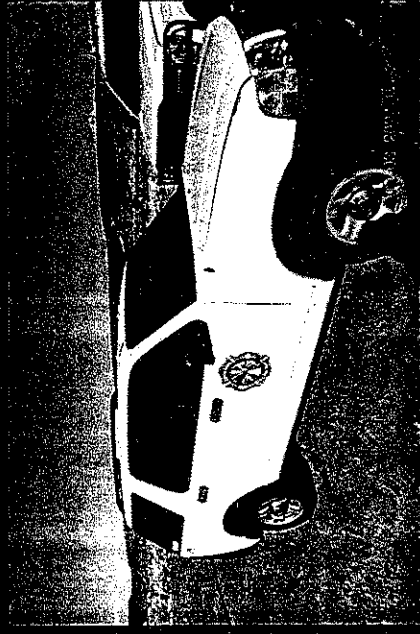


2007 CHEVY TAHOE
1GNEC03097R323842

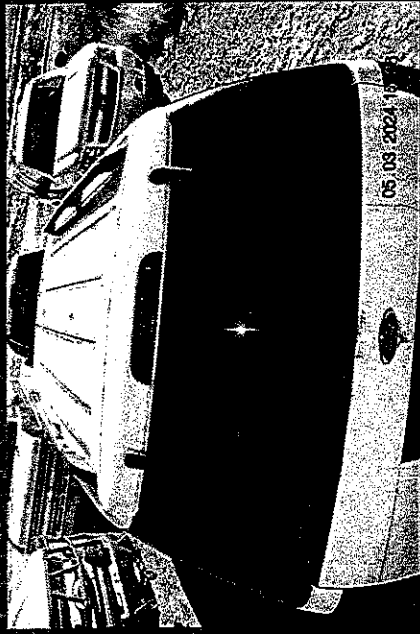


2003 FORD EXPLORER 1FMZU72K53UA31868



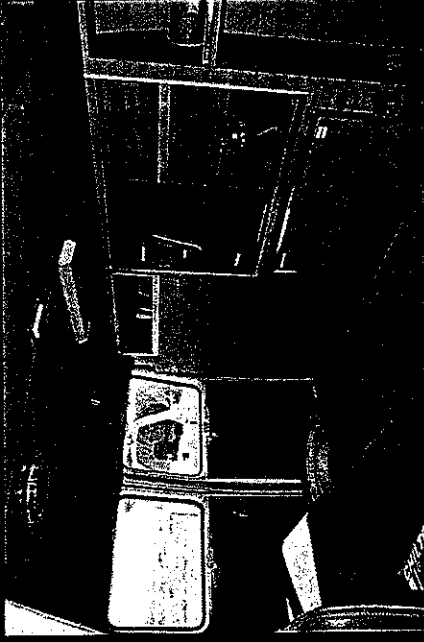
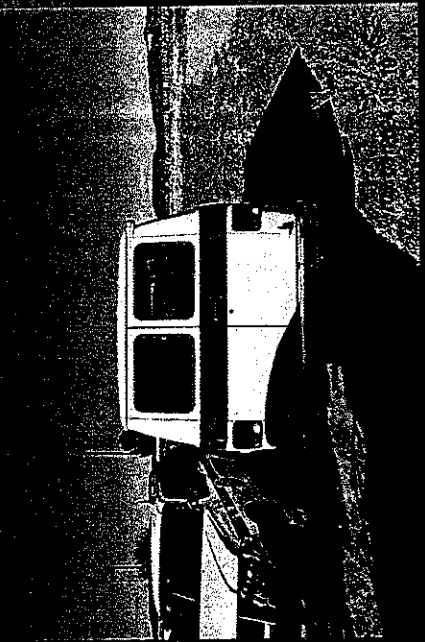
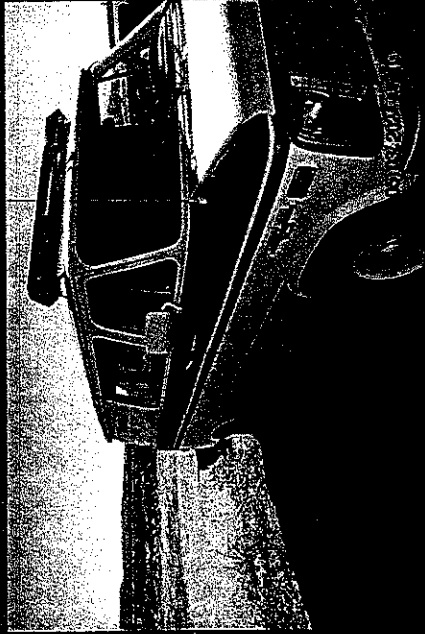
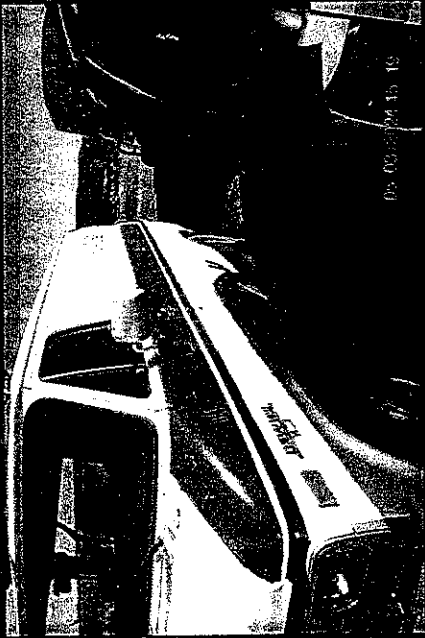


05-03-2024 15:35



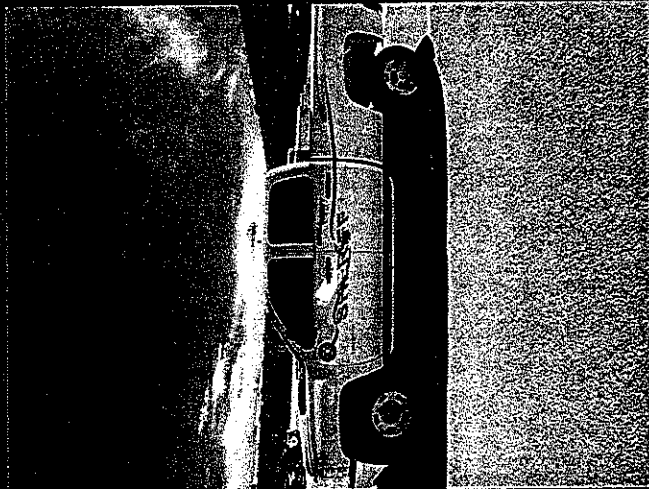
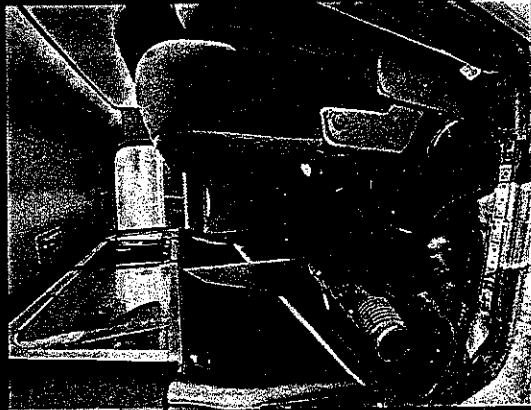
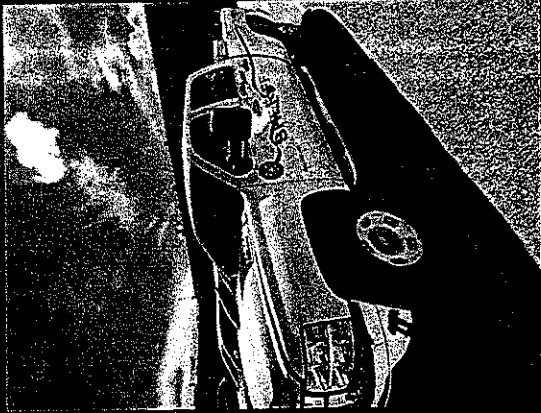
2003 FORD EXPLORER 1FMZU72K13UA31866



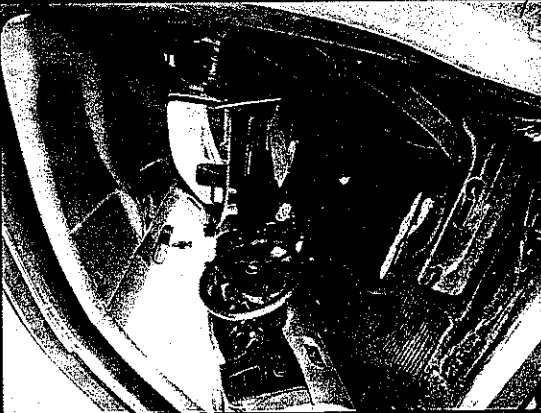


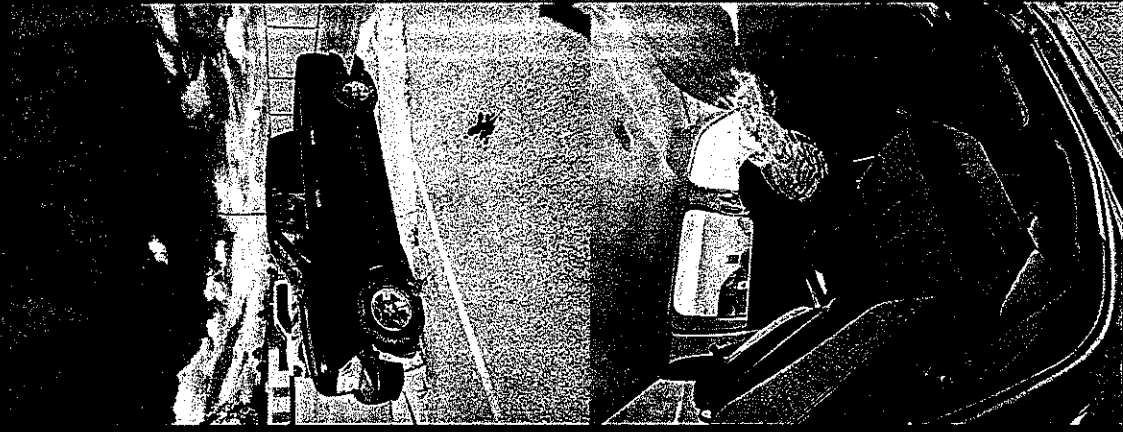
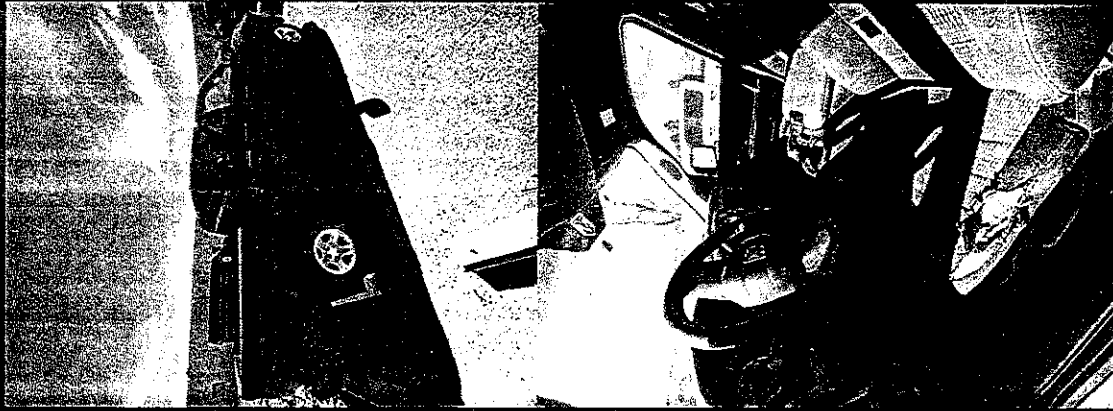
1989 CHEVY VAN
2GCDG15H4K4163029





2012 CHEVY SILVERADO 2500
1GC1KVC86CF186240





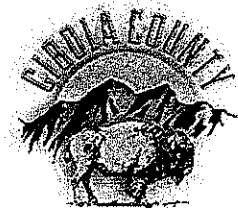
2012 DODGE RAM 1500
1C6RD7KT6CS339549



Cibola County Commission

Christine Lowery, Chair
Ralph Lucero, 1st Vice-Chair
Daniel J. Torrez, 2nd Vice-Chair
Martha Garcia, Commissioner
Robert Windhorst, Commissioner

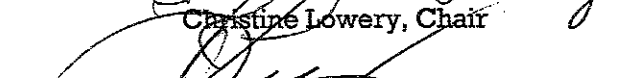
Cibola County
700 E. Roosevelt Ave., Suite 50
Grants, New Mexico 87020
Phone (505) 287-9431 – Fax (505) 285-5434




Kate Fletcher
County Manager

THE BOARD OF COUNTY COMMISSIONERS:


Christine Lowery, Chair


Ralph Lucero, 1st Vice-Chair


Daniel J. Torrez, 2nd Vice-Chair

ABSENT

Martha Garcia, Commissioner


Robert Windhorst, Commissioner

ATTEST:


Michelle E Dominguez, County Clerk