

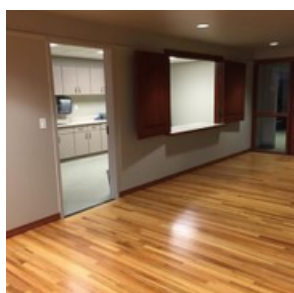
# **City of Holladay** **Holladay City Hall Spaces**

*Holladay City Hall  
4580 S. 2300 East  
Holladay, Utah 84117*



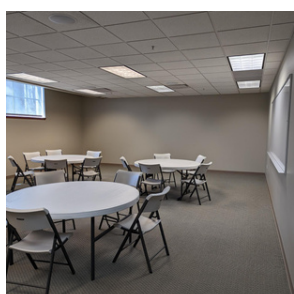
## **BIG COTTONWOOD ROOM**

Full Day, 6hrs or more	\$500
Hourly, 5hrs or less	\$60/hr
Refundable Deposit Full Day	\$300
Refundable Deposit Hourly	\$100



## **LITTLE COTTONWOOD ROOM**

Full Day, 6hrs or more	\$400
Hourly, 5hrs or less	\$50/hr
Refundable Deposit Full Day	\$200
Refundable Deposit Hourly	\$100



## **JOHN HOLLADAY ROOM**

Full Day	\$50
Hourly	\$30/hr
Refundable Deposit	\$50



## **OTHER ROOM FEES**

Table Linens	\$5/ea
--------------	--------

# City of Holladay

## Holladay Park Spaces

*Holladay City Park  
4580 S. 2300 East  
Holladay, Utah 84117*



### **HOLLADAY CITY PARK GAZEBO**

Daily reservation fee \$75



### **HOLLADAY CITY PARK PICNIC PAVILION**

Daily reservation fee \$75

*Knudsen Park  
6290 S. Holladay Blvd  
Holladay, Utah 84121*



### **GNUDSEN PARK PICNIC PAVILION**

Daily reservation fee \$75



### **GNUDSEN PARK OUTDOOR CLASSROOM**

Daily reservation fee \$75