

# LIVING HISTORY

## Clawson Historical Museum



### Clawson Gets a High School

The 1920s were an important time in Clawson for many reasons, one of them being establishing a school system and building schools. 100 years ago, in 1924 Clawson opened its original High School building with a \$135,000 bond. By that point the new Clawson School district #11 had only built one temporary school (Talbot) and rented another temporary building (Mooney school).

This was the first permanent school building built by the new school district. Prior to this school being built, Clawson kids would attend Log Cabin school in the Troy school district.



dedication of  
school building  
1924

### Visit the Museum

You can find us next to the Blair Memorial Library



Hours:  
Wednesdays and Saturdays  
2-5pm

## Holiday Hours & Closed dates

**The Museum Will be Closed:**  
**Closed December 16th 2023- February 10th 2024 for the season.**  
**-Wednesday June 19th**  
**-Wednesday November 27th**

\*Please note: The Museum will be closed when Clawson schools are closed for inclement weather

## Looking for Volunteers

Do you enjoy history or wish to learn more about the history of Clawson and share it with others? The museum is looking for volunteers to help out during our open hours on Wednesdays and Saturdays from 2-5pm. We appreciate any help.

### Volunteer Opportunities:

- Tours (docent)
- Greet Guests
- Help with Events
- Help with special projects



## Donate or pay for membership online

We now have the capability to receive online donations or membership payments through paypal. If you would like to utilize the online payment option, visit [cityofclawson.com](http://cityofclawson.com), choose the museum tab, then the historical society tab, at the bottom you will see a link and a QR code. You can use your phones camera to scan the QR code below as well!



## Historical Society Membership

Join the Historical Society or renew your membership. Cost is \$10 per person/ \$5 for seniors.

Your Society membership fee helps make events, new displays, public presentations and museum/ artifact maintenance possible.

To continue receiving paper newsletters by mail, please update your membership. All memberships that are not updated will be changed to email.

## Membership Form

Name: \_\_\_\_\_

Address: \_\_\_\_\_

Telephone: \_\_\_\_\_

I would like to receive the quarterly newsletter via:

Email \_\_\_\_\_

Email address: \_\_\_\_\_

Regular Mail: \_\_\_\_\_

Please contact me regarding volunteer opportunities. I am interested in:

Clawson Historical Society  
425 Main Street, clawson MI 48017  
248-588-9169  
[www.historicalmuseum@cityofclawson.com](mailto:www.historicalmuseum@cityofclawson.com)

# Museum Resource Page

Here at the museum we do not want to just store and collect Clawson history, we also want to share it and make it accessible to as many as possible.

On our website we have a "Resources for Residents" (shown below) that has a list of homes we have photos and land abstracts for, directories starting in the 1920s, maps of the area from the 1800s and a listing of items only available in the museum or by request through email for copies.

## Public Access to Archives

"A picture can say a thousand words", and we have thousands of old photos of Clawson and they say a lot! If you are interested in looking at old photos of Clawson, visit our online archive to enjoy photos as old as the late 1800s of Clawson. Our archives can be accessed by going to [cityofclawson.com](http://cityofclawson.com), choose the historical museum tab and then click the resources for residents tab shown above. You will find the link on that page.



**Clawson Historical Museum**

*(Aerial view of Clawson from 1928)*

**The Museum is open for walk-in tours Wednesdays and Saturdays.**  
*For questions you may contact the Curator by Phone: 248-588-9169,*

Preservation Resources The State Historic Preservation Office (SHPO) offers several resources and publications for owners of homes and commercial buildings interested in preserving the historic integrity of their building. Guides to dealing with lead paint, restoring old windows, finding an architectural historian or consultant, and other topics are available on their website. [www.michigan.gov/shpo](http://www.michigan.gov/shpo)

## Clawson Historical Museum Purposes and Policies

The Clawson Historical Museum is owned by the City of Clawson and governed by a Historical Commission of five members appointed by the City of Clawson Council. It is managed by a curator appointed by the city manager. Its operating budget is funded through the City of Clawson and augmented by donations from the Clawson Historical Society.

Museum Purpose: The Clawson Historical Museum exists to collect, preserve, and encourage the use of documents, photographs and artifacts related to the early history of Clawson, from its settlement in 1823 to the present, focusing especially on the decade of the 1920s, when Clawson was incorporated as a Home Rule Village.

Collections: Historical Records including those related to area public and civic organizations, as well as personal oral histories of residents, property abstracts, school and business records and thousands of photographs documenting Clawson's buildings, homes and streets. Also included in the collection are maps, almanacs and contemporary published materials such as newspapers, books, magazines and periodicals that reflect the culture of the 1920s. These materials are available to the public for research on genealogy, property history, environmental investigations and other personal interests..

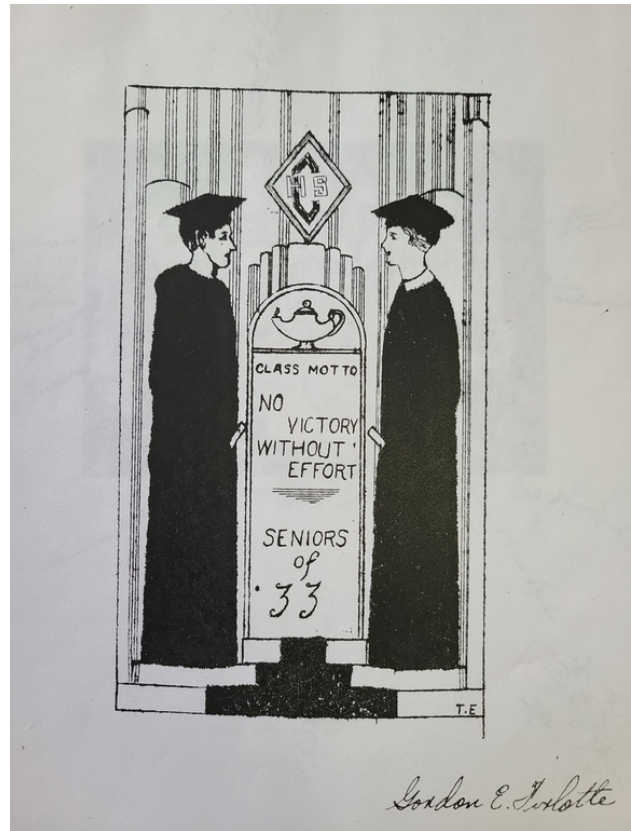
# Clawson Gets a High School cont...

The first year of classes weren't easy for the students though, much of the school was still under construction. The sounds of nails being hammered as well as dust from construction was a distraction and the new library remained empty until the school was finished.

The school continued educating Clawson students and in 1926 it had its first graduating class with nine students.

The original school colors were green and white. In 1933 Clawson gathered a group of students to create the first Clawson High School yearbook. We have a copy of this yearbook at the museum.

The school offered many different sports teams, curriculum such as home-ec and nursing. Like students today they even got to travel to Washington D.C.



OPTION 1  
BRONZE

OPTION 2  
ALUMINUM



**Bronze: \$274    Aluminum: \$172**  
**shipping included in price**

## Historical Home Plaques

Do you have a home in Clawson that is around 100 years old?

Clawson is a unique small city with hundreds of homes that are around 100 years old and many many kit homes (more than normal in a town of this size).

The Historical Society has partnered with Signature Streetscapes out of Muskegon Michigan to help residents acquire a "Historical" home plaque for their home.

The plaques do not come with historical designation from the state, if that is something you are interested in you can contact the museum for further information. Our plaques do not come with grants, tax assessment freezes or tax breaks. You also do not need to contact the museum in the future to make any changes to the exterior of your home and there is no application required. No home will be turned away, even if your home is newer.

All costs of the plaque, shipping and installation are homeowners responsibility. The museum does not profit from this program.

If you are interested, please contact the curator.

# Add to our Collection

Over the decades the museum has accumulated thousands of photos that give us a glimpse into the history of Clawson.

We are always looking for anyone who has old photos of Clawson to add to our collection. We accept photos of businesses, long gone buildings, homes, streets, event and people. If you do not wish to donate your original copy, we are always happy to scan a copy and return the original to you. These photos are a great resource for the museum as well as the community.

If you are willing to donate photos or a copy of them, please contact the curator at [historicalmuseum@cityofclawson.com](mailto:historicalmuseum@cityofclawson.com)



looking East on 14 mile at Main st. 1920's

## Photos we are in search of

We are always excited about any new Clawson photos to be added to our collection but here is a list of photos we are currently looking for.



- Original Post office built in 1946 on the North East side Main at Bowers.
- Cannon that used to be in Clawson Park
- photos of homes pre-1960s

## Clawson High Photos



1925 photo Clawson female students



Clawson High auditorium 1930s

Varsity Basketball 1929-30  
Charles Bacheller-Coach

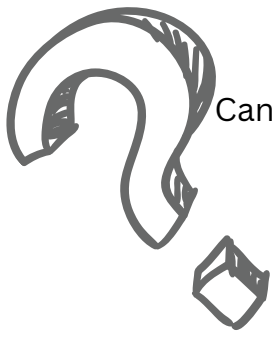


Top Row - Left to Right - Vernon Wassili, Jerald Cole-Sr, Leland Compton-Sr, James Brangar-Sr, Tom Cooper-Sr. Bottom Row - John Eastice-Sr, Lyle Walker-Sr



Anyone remember the Penny Candy store that was on John M?

1929/30  
Boys  
basketball  
team



# Riddle me this...

Can you solve the riddle below? It may seem easy but can you grasp its flow?

Which winter month do people sleep the least?

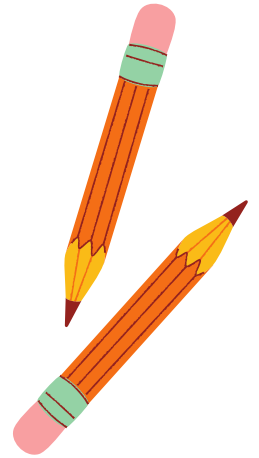
answer on page 7



## Word Search Clawson Schools



B	B	X	X	J	E	T	E	U	M	D	H	H	S	C
A	Q	Y	Y	T	Y	H	L	E	V	D	S	U	C	H
K	A	U	H	P	N	X	H	T	F	M	T	N	H	E
E	C	L	A	W	S	O	N	H	I	G	H	T	A	N
R	D	P	W	D	L	M	G	U	T	M	S	E	L	D
K	E	N	W	O	O	D	V	K	X	K	Y	R	M	R
G	U	A	R	D	I	A	N	A	N	G	E	L	S	I
N	K	B	P	Y	P	Q	C	Q	Q	V	Q	Z	A	C
L	E	R	O	Y	B	U	R	T	O	N	S	D	O	K
T	D	M	A	C	D	O	N	A	L	D	I	N	B	S
A	M	P	M	O	O	N	E	Y	V	R	Z	R	V	O
L	W	P	A	R	K	L	A	N	D	W	L	X	K	N
B	I	U	X	C	R	Y	L	L	E	G	O	O	P	D
O	N	C	L	A	W	S	O	N	J	U	N	I	O	R
T	X	Y	R	H	W	L	O	G	C	A	B	I	N	G



Guardian Angels

Clawson Junior

Clawson High

Leroy Burton

Log Cabin

Mooney

Hendrickson

Parkland

Kenwood

Talbot

Macdonald

Schalm

Hunter

Baker

# Clawson Gets a High School cont...

During break or after school, students would visit the penny candy store that was located on John M. This home along with a few others were purchased by the school district some time in the 60's after the new High School was built and the pool addition was added. This is also when John M no longer continued to Main street.

The original Clawson High building from 1924 is still around today. In 1954 it became the Clawson Junior High and is still attached to the back side of the current Clawson Middle School.

Our next exhibit will feature many more photos, artifacts and information on Clawson High. This exhibit is coming Wednesday February 14th.

**Answer**

February



---

## New Exhibit: Clawson Schools

2023 was the 100th anniversary of the Clawson School district #11. Our archives are full of school photos, yearbooks, school artifacts, fun stories and anecdotes from the last century (and more). To celebrate the anniversary our exhibit room will be themed for the year 2024 around all of Clawson schools (including all that are long gone).

We hope this exhibit will bring up wonderful childhood memories for alumni of Clawson schools while giving a glimpse of the history of Clawson schools of the past to new comers. If you have a fun memory of any of the schools and would like to share it with us for the exhibit we would love to include it!

This exhibit will open Wednesday February 14th  
2024



# Historical Commission

The five member governing board of the Historical Museum meets four times a year. We discuss events, exhibits, future plans and the general running of the museum.

Meetings are held at the museum at 7p.m. and are open to the public.

2024 Commission meetings:

**Tuesday February 13th**

**Tuesday April 9th**

**Tuesday July 9th**

**Tuesday October 8th**



## Giftshop

Items may be purchased at the museum by check or cash.

### **Books \$15**

Clawson; The Way It Was by Deloris Kumler  
Images of America: Clawson by Deloris Kumler  
Two Square Miles Vol.1 & Vol.2 by Bill Hayes

### **Books \$5**

Pummychug; A Boys Life in Clawson by Melodie Nichols

**Clawson Magnets \$ 5**

**Clawson Hats \$ 10**

**Bookmarks \$2**

**1823 map copies \$5**



## Group Tours

Are you a scout or other group leader? are you looking for a history based activity?

We love having local organizations come in and tour the Clawson Historical Museum! We have many items in the house to stir up interest for any group. For younger groups this is a great experience to see what life was like 100 years ago. Tours can be set up with the curator and are outside of the normal hours for a more private experience.

For more information, contact the curator.

Leah Davis

248-588-9169

historicalmuseum@cityofclawson.com

## Hours and Location

Museum address: 41 Fisher ct. Clawson, MI 48017

Mailing Address: 425 North Main st. Clawson, MI 48017

Phone: 248-588-9169

Email: historicalmuseum@cityofclawson.com

Hours: Wednesdays and Saturdays, 2-5p.m.

Free admission, donations appreciated

Group tours by appointment

Visit us on Facebook and Instagram

