



Date: July 2nd, 2025

To: City Council and Administration

From: Carl R. Ray, Water and Wastewater Director

Re: Award Recommendation for Replacement Pickup with Crane (5-32)

Replacement of a 2010 pickup with crane (unit 5-32) used by Wastewater Department was proposed and accepted into the 2025 budget. In 2025 the truck exceeds our 12-year replacement cycle. The total budget was \$90,000.00 with the City of Craig portion being \$75,000.00 and the trade in being estimated at \$15,000.00. Bid specifications were prepared for the cab and chassis, and the flatbed with crane. Bids were advertised, and bids were opened on July 1st, 2025.

We received two bid packets for the cab and chassis and three bid packets for the flatbed with crane. The following two bid tabs were prepared:

1-Ton Single Cab & Chassis 4x4 Dually - Bid Tab

Features	Victory Motors of Craig	Sill-TerHar Motors
Year	2026	2026
Make	Dodge	Ford
Model	Ram 3500	F350
Engine	Gas	Gas
Vehicle Base Price - Cab & Chassis	\$52,700.00	\$55,000.00
Warranty - Cab & Chassis	Included	Included
Extended Warranty - B2B	\$4,495.00	\$2,150.00
Trade-in Value - from City	\$18,000.00	\$9,000.00
Total Price	\$39,195.00	\$48,150.00

Flatbed w/4,000 lb Crane - Bid Tab			
Features	Victory Motors of Craig	O.J. Watson #1	O.J. Watson #2
Year	2026	2026	2025
Make	Venco / Venturo	Bed Rock / Stellar EC4000	Cadet Western / Stellar EC400
Platform	Exceeds	Meets	Meets
Tapered Headboard	Meets - Rectangular	Meets	Not Met - Lowered
Length	Exceeds	Not Met - 11'4"	Meets
Crane	Meets	Meets	Meets
Stowed Boom Length	Meets	Not Met - 8ft	Not Met - 8ft
Stabilizers	Meets	Meets	Meets
Toolboxes	Meets	Meets	Meets
Price - Flatbed & Crane	\$51,600.00	\$42,729.00	\$42,024.00
Crane Warranty	Included	Included - 5 yr structure, 1 yr parts	Included
Total Price	\$51,600.00	\$42,729.00	\$42,024.00

We recommend awarding the cab and chassis bid to the low bidder, Victory Motors of Craig, in the amount of \$39,195.00 and the flatbed with crane to Victory Motors of Craig in the amount of \$51,600 as it meets or exceeds specifications. The award total for the replacement of vehicle 5-32 is \$90,795.00 which is \$795.00 over the budgeted amount, however the bid specifications are met or exceeded. We have had two previous capital awards that in total were \$91,042 under the budgeted amount which more than compensates for the overage.

ADVERTISEMENT FOR BID

The City of Craig is accepting bids to purchase **Wastewater Department One Ton Single Cab and Chassis 4x4 with Dual Rear Wheels**. Bids will be due at the Council Chambers at City Hall, 300 West Fourth Street, Craig, Colorado 81625, at 2:15 p.m., Tuesday, July 1st, 2025, at which time they will be opened and read aloud. The award for a bid will be at the July 8th, 2025, City Council meeting. Specifications may be obtained by contacting City Clerk Katie Carmody, at (970)826-2008 kcarmody@ci.craig.co.us.

No bid shall be withdrawn after opening the bid without the consent of the City of Craig, for a period of 30 days after the scheduled time for opening bids.

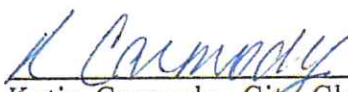
The City of Craig reserves the right to reject any or all bids and to waive any informality in the bidding.

The bids must be filled out on the bid form provided. Bids shall be addressed to the City of Craig and shall have the name of the bidder and "**Wastewater Department Cab and Chassis 4x4 with Dual Rear Wheels**" written thereon.




Chris Nichols, Mayor

Attest:


Katie Carmody, City Clerk

Published June 11, 18, and 25, 2025

City of Craig
300 W 4th Street
Craig, Colorado
Wastewater Department
Suggested Technical Specifications

One Ton Single Cab and Chassis 4x4 with Dual Rear Wheels

This specification describes the requirements for a 1-ton, 4-wheel drive cab and chassis with dual rear wheels. The unit must be safe and efficient to operate and built strong and durable enough for heavy-duty operation over extended periods of time in a municipal setting. All standard equipment as shown in the manufacturer's printed literature must be included in the bid, plus any modifications to meet OSHA federal and state regulations in all respects. The unit must be new and of the manufacturer's current model year in production at the time of delivery, and not a model to be phased out of production. It is stressed that what follows are minimum specifications and while they mention only the salient descriptive points of the cab and chassis, they do not exclude any major or minor items not specifically mentioned, but which would normally and reasonably be necessary for proper, safe, efficient, and beneficial use and ownership.

Bidding instructions:

- A. Each technical item of these specifications shall be individually annotated by the bidder in the first column provided on the sheet with one of the following statements:
1. meets
 2. exceeds
 3. does not meet
 4. not applicable
- B. If any item is marked "Exceeds", "Does not Meet", "Not Applicable" details must be given in the second column provided, along with each entry describing what exactly is being bid.
- C. The individual cost of each item of the specifications must also be annotated if its cost has not been included in the basic bid price.
- D. Complete printed literature, publications, and photograph of the unit proposed must be included with each bid.

The vendor will please indicate the make, model, year and type of cab and chassis & bed offered:

2026 Ram 3500 CAB chassis Reg CAB 8'4" CA 4x4
GAS Dualhy

The vendor will please indicate the location (country) where the cab and chassis offered was originally manufactured: Mexico

Description	Compliance	Deviation
Model	meet	
2025 1Ton 4x4 Single Cab Dual Rear Wheel Cab and Chassis	Meet	
Engine	Meet	
Gas 6.0 Liter or greater	Meet	6.4L Hemi
Transmission	meet	
Automatic 6 speed heavy duty w/OD	Meet	8 spd
Differential	meet	
Rear locking differential	Meet	
Tires	meet	
Mud and Snow Radials 10ply	Meet	Lt 235/30 R17E off Road Tires 10ply
One spare wheel and tire	Meet	
Cab	meet	
Single Cab	Meet	
Cloth heavy duty seats 40/20/40 with fold down console	Meet	
Vinyl floor covering with floor mats	Meet	
Gauges	Meet	
AM/FM Radio	Meet	
Trailer towing heated electric mirrors	Meet	In Tradesman pkg
Delay Wipers	Meet	
Air Conditioning	Meet	
Tilt Steering Wheel	Meet	
Electric windows and door locks	Meet	Tradesman pkg Included
Cruise Control	Meet	Trades
Suspension	meet	
Heavy Duty springs and shocks	Meet	
Front-6000lb, Rear 9750lb	Meet	
Air Bags	Meet	with air
Other		
Heavy duty alternator 70amp minimum Battery 575 cold cranking AMP 130 min reserve capacity required for 12-volt DC operation	Meet	730 AMP Battery 220 AMP ALT
Heavy duty radiator	Meet	
Engine oil cooler	Meet	
Transmission oil cooler	Meet	
4-wheel anti-lock brakes	Meet	
Engine block heater	Meet	
4 key fobs or keys	Meet	
2 speed transfer case	Meet	
Transfer case and engine skid plates	Meet	

Other Continued	Compliance	Deviation
Front Mounted Recovery Hooks	meet	
Solid White in Color	meet	
Heavy Duty Front Bumper	meet	
36-gallon fuel tank	meet	52 gallons
Trailer towing package with rear electric towing plug	meet	
Receiver hitch (10,000 lb.)		
Trailer brake controller installed in dash	meet	in TRACERMAN pkg
Auxiliary switches for lights and beacon	meet	
Back up Camera	meet	
Wheelbase	meet	
165 inches	meet	167.5 inches
Cab to axle-84 inches	meet	

Complete set of repair manuals for all components

Extended Warranty must be the best available.

-60 Months Extended bumper to bumper warranty
Including Elec components

\$ 4,495.00

The City of Craig may wish to use for trade-in:

Trade-in

2010 Dodge 3500 flatbed with crane (5-32)
VIN#3D6WZ4ETXBG505871

Price for Trade-in

\$ 18,000.00

The Cab & Chassis dealer must stay in contact with the company that is installing the bed on the truck. Making sure we have the right measurements for the bed to fit.

Bid Proposal Form

One Ton Single Cab and Chassis 4x4 with Dual Rear Wheels

The signer of this proposal declares and agrees:

That they have received and examined the bid specifications and are cognizant of the equipment requirements.

If this proposal is accepted, you will contract to furnish and deliver the required equipment as specified.

That they have the capability and will provide such adjustments and repairs as may be required under the manufacturer's warranty.

That the bid price is for equipment complete as specified, delivered F.O.B. Craig Colorado.

That the City of Craig reserves the right to reject any or all bids, re-bid or negotiate any bid, and to determine what piece of equipment is the proper one for the City, and not necessarily low bid.

Price of cab and chassis:	\$ <u>52,700.00</u>
Price of extended warranty:	\$ <u>4,495.00</u>
Less Trade: 2010 Dodge 3500 (5-32)	-\$ <u>18,000.00</u>
Total Price after Trade:	\$ <u>39,195.00</u>

Delivery will be made within 90-120 days after receipt of the order.

Company Name: Victory Motors of Craig Inc.
Address: 2705 WEST 4TH STREET
Phone Number: 970-462-0209
Signature: [Signature]
Date: 6-26-25

VICTORY MOTORS OF CRAIG INC
2705 W 1ST STREET
CRAIG, CO 816253643

Configuration Preview

Date Printed: 2025-06-25 6:50 PM
Estimated Ship Date:

VIN:
VON:

Quantity: 1
Status: BA - Pending order
FAN 1: 000G3 City of Craig, Colorado
FAN 2:
Client Code:
Bid Number: TB6055
PO Number:

Sold to:
VICTORY MOTORS OF CRAIG INC (43480)
2705 W 1ST STREET
CRAIG, CO 816253643

Ship to:
VICTORY MOTORS OF CRAIG INC (43480)
2705 W 1ST STREET
CRAIG, CO 816253643

Vehicle: 2026 3500 REG CAB CHASSIS 4X4 (167.5 in WB - CA of 84 in) (DD8L64)

	Sales Code	Description	MSRP(USD)
Model:	DD8L64	3500 REG CAB CHASSIS 4X4 (167.5 in WB - CA of 84 in)	51,780
Package:	2UA	Customer Preferred Package 2UA	0
	ESL	6.4L V8 HEMI HD Engine	0
	DFX	8-Spd Auto 8HP75-LCV Transmission	0
Paint/Seat/Trim:	PW7	Bright White Clear Coat	0
	APA	Monotone Paint	0
	*V9	Cloth 40/20/40 Bench Seat	295
	-X9	Black	0
Options:	YEP	Manuf Statement of Origin	0
	TBB	Full Size Spare Tire	395
	XCH	2 Additional Key Fobs	275
	TSG	LT235/80R17E Off Road Tires	995
	NHK	Engine Block Heater	95
	A7B	Tradesman Level 1 Equipment Group	2,595
	XAC	ParkView Rear Back-up Camera	495
	4DH	Prepaid Holdback	0
	XHC	Trailer Brake Control	0
	4ES	Delivery Allowance Credit	0
	MDA	Front License Plate Bracket	0
	MAF	Fleet Purchase Incentive	0
	5N6	Easy Order	0
	4FM	Fleet Option Editor	0
	4FT	Fleet Sales Order	0
	171	Zone 71-Los Angeles	0
	4EA	Sold Vehicle	0
Non Equipment:	4FA	Special Bid-Ineligible For Incentive	0
Bid Number:	TB6055	Government Incentives	0
Discounts:	YG6	6.2 Additional Gallons of Gas	0
Destination Fees:			2,095

Total Price: 59,020

Order Type: Fleet
Scheduling Priority: 1-Sold Order

PSP Month/Week:
Build Priority:

*YOUR PRICE FOR THE 2026
TRUCK TO ORDER
INCLUDES AIR BAGS
WITH COMPRESSOR*
\$52,700
/

Note: This is not an invoice. The prices and equipment shown on this priced order confirmation are tentative and subject to change or correction without prior notice. No claims against the content listed or prices quoted will be accepted. Refer to the vehicle invoice for final vehicle content and pricing. Orders are accepted only when the vehicle is shipped by the factory.

Tradesman Level 1 Equipment Group (A7B)

Image not available at this time. Please try again later.

Details:

- Rear Window Defroster (GFA)
- Speed Sensitive Power Locks (JPH)
- Mirror Pwr Heat Fold Telescope Black (GT2)
- Ext. Mirrors w/Supplemental Signals (LEB)
- Upgraded Door Trim Panel (CTY)
- Exterior Mirrors Courtesy Lamps (LEC)
- Manual Folding Exterior Mirrors (LFD)
- Trailer Light Check (JJ1)
- Exterior Mirrors w/Heating Element (NHJ)
- Pwr Windows, Front 1-Touch Down (JPY)
- Trailer Brake Control (XHC)
- Mirror Running Lights (LNY)
- Manual Telescoping Mirrors (LF3)
- Power Adjust Mirrors (LF2)

*HAVE TO ORDER THIS
PACKAGE TO GET THESE OPTIONS
YOU WANT*

- Black Exterior Mirrors (LE4)
- Remote Keyless Entry (GXM)
- Convex Aux Mirrors, Power-Adjustable (LFX)

Standard Equipment

Standard Features - DD8L64-3500 REG CAB CHASSIS 4X4 (167.5 in WB - CA of 84 in)	
Code	Description
ME6	"RAM" Grille Badge
JJ7	102 MPH Maximum Speed
DRX	11.50" Dual Wheels Rear Axle (X)
JCB	120 MPH Primary Speedometer
JJJ	12V Auxiliary Power Outlet
WFG	17x6.0 Black Painted Steel Wheels
BAJ	220 Amp Alternator (X)
RCD	4 Speakers
SCF	4-Spoke Steering Wheel
DMF	4.10 Axle Ratio
CBE	40/20/40 Split Bench Seat
RTQ	4G LTE Wi-Fi Hot Spot
NAS	50 State Emissions
NFH	52 Gallon Rear Fuel Tank (X)
DJM	6,000# Front Axle w/Hub Ext (X)
ESL	6.4L V8 HEMI HD Engine (X)
XFK	7 Pin Trailer Wiring Harness (X)
BCN	730 Amp Maintenance Free Battery (X)
DFX	8-Spd Auto 8HP75-LCV Transmission (X)
RFL	8.4" Touchscreen Display
RD3	Accent Color Shark Fin Antenna
MDX	Active Grille Shutters
NH3	Adaptive Cruise Control w/Stop (X) NEW STANDARD OPTION
CG3	Advanced Multistage Front Air Bags
HAA	Air Conditioning (X)
BRT	Anti-Lock 4-Wheel Disc Brakes (X)
DSA	Anti-Spin Differential Rear Axle (X)
RFP	Apple CarPlay
RSU	Audio Jack Input for Mobile Devices
LMG	Automatic Headlamps
LHL	Auxiliary Switches - I/P Mounted (X)
NHB	Auxiliary Transmission Oil Cooler (X)
CTL	Base Door Trim Panel
A7A	Base Equipment Group
CU3	Behind the Seat Storage / Bin
MNA	Black Door Handles
M17	Black Exterior Badging - Trucks
LE4	Black Exterior Mirrors
MB1	Black Front Bumper
MFA	Black Headlamp Bezels
CKJ	Black Vinyl Floor Covering (X)
WMB	Black Wheel Center Hub
RTE	Bluetooth Handsfree Phone and Audio

Standard Features - DD8L64-3500 REG CAB CHASSIS 4X4 (167.5 in WB - CA of 84 in)		
Code	Description	
LB6	Bulb Out Detection Defeat For LED	
X75	Bumper Module II	
X8S	Center Console Parts Module	
LNC	Clearance Lamps	
JAK	Cluster 3.5" TFT Color Display	
RTM	Connectivity - US/Canada	
DS7	Conventional Differential Frt Axle	
HGB	Dash Liner Insulation	
BC3	Dash Pass Thru Wire Circuits	
LM1	Daytime Running Headlamps, Low Beam	
LP8	Delete Cargo Lamp	
MD8	Delete Front License Plate Bracket	
XBC	Delete Pickup Box	
TBF	Delete Spare Tire	
X82	Door Parts Module	
CLP	Door Sill Scuff Pads	
CDX	Driver & Passenger Headrest	
JVA	Driver Seat - Manual Adjust 4-Way	
CSP	Driver/Passenger Assist Handles	
JB	DUAL NOTE ELECTROMECHANICAL HORNS	
WLA	Dual Rear Wheels	
DK3	Elec Shift-On-The-Fly Transfer Case	
DH4	Electronic Range Select	
XXU	Electronic Shift	
BNB	Electronic Stability Control	
NHN	Electronically Controlled Throttle	
HGF	Floor Tunnel Insulation	
X9E	For Details, Visit DriveUconnect.com	
MXB	Front Air Dam	
CDR	Front Armrest w/Cupholders	
X83	Front End Parts Module	
SFB	Front Heavy Duty Shock Absorbers	
CGD	Front Height Adjust Shoulder Belts	
LV	Front LED Fog Lamps	
SHA	Front Stabilizer Bar	
MHR	Front Wheel Well Liners	
JWA	Frt Pass Seat - Manual Adjust 4-Way	
LSU	Full Speed Fwd Collision Warn Plus	
RDG	Global Telematics Box Module (TBM)	
JKH	Glove Box	
RF5	Google Android Auto	
JLP	GPS Antenna Input	
X79	Grille Module	

Standard Features - DD8L64-3500 REG CAB CHASSIS 4X4 (167.5 in WB - CA of 84 in)	
Code	Description
X8E	Grille Module II
MFF	Grille-Matte Black Mesh
MM5	Grille-Surround Matte Black
Z8H	GVW Rating - 13500#
*TX	HD Vinyl 40/20/40 Split Bench Seat
LHD	Headlamp Off Time Delay
X8Y	Headliner Parts Module
NMC	Heavy Duty Engine Cooling
JE1	I/P Bezels-Painted
LA6	Incandescent Taillamps
JY1	Instrument Cluster Theme 1 (Base)
X81	Instrument Panel Parts Module
RTF	Integrated Center Stack Radio
XRB	Integrated Voice Command w/Bluetooth
XZG	Job Rated
CEU	Key Fob - Black
LM3	LED Low/High Reflector Headlamps
TV2	LT235/80R17E BSW All Season Tires
LF1	Manual Adjust Mirrors
JE8	Manual Door Locks
LFD	Manual Folding Exterior Mirrors
LF3	Manual Telescoping Mirrors
JF8	Manual Windows
LBA	Map/Courtesy Lamp
RSF	Media Hub-2 USB, Full Funct, Aux
GT1	Mirrors Manual Fold Telescope Black
APA	Monotone Paint
JMD	N95+Bio HVAC Cabin Filter
TZN	Nexen Brand Tires
XA8	Non Adjustable Pedals
CUN	Overhead Console
LBT	Overhead Cupholder Lamp
GNM	Passenger Side Sun Visor w/Mirror
LST	Pedestrian/Cyclist Emergency Braking
JKY	Power Accessory Delay
SBE	Power Steering
GX4	Pushbutton Start
MT7	Ram 3500 Badge
BHD	Ready Alert Braking
LCH	Rear Dome Lamp
GJD	Rear Fixed Window
SGB	Rear Heavy Duty Shock Absorbers
SHD	Rear Heavy Duty Stabilizer Bar

Standard Features - DD8L64-3500 REG CAB CHASSIS 4X4 (167.5 in WB - CA of 84 in)		
Code	Description	
GNA	Rear View Day/Night Mirror	
RSX	Remote USB Port	
RS3	Remote USB Port - Charge Only	
X8Z	Seat Parts Module	
GXX	Sentry Key Theft Deterrent System	
RSD	SiriusXM Satellite Radio	
BNF	Stationary Elevated Engine Idle	
CUY	Storage Tray	
JFJ	Temperature & Compass Gauge	
SUA	Tilt Steering Column	
GAC	Tinted Glass Windows	
GBB	Tinted Windshield Glass	
XBN	Tip Start	
X88	Tire & Wheel Parts Module	
XEA	Tow Hooks	
UBE	Uconnect 5 w 8.4" Display (USA)	
XXS	Upfitter Electronic Module (VSIM)	
CV3	Urethane Shift Control	
RF7	USB Host Flip	
JHA	Var Intermittent Windshield Wipers	
LAZ	Vehicle Information Center	
XF6	Voltage Monitoring Auto Idle Up Sys	

Standard Engine

Package Details	
	TRADESMAN
	Package Contents
6.4L V8 HEMI HD Engine	
8-Spd Auto 8HP75-LCV Transmission	
Package Value Price	

ADVERTISEMENT FOR BID

4,000 PER CARL RAY

The City of Craig is accepting bids to purchase **Wastewater Department Flatbed with 5000lb Crane for 1 Ton Cab & Chassis**. Bids will be due at the Council Chambers at City Hall, 300 West Fourth Street, Craig, Colorado 81625, at 2:30 p.m., Tuesday, July 1st, 2025, at which time they will be opened and read aloud. The award for a bid will be at the July 8th, 2025, City Council meeting. Specifications may be obtained by contacting City Clerk Katie Carmody, at (970)826-2008 kcarmody@ci.craig.co.us.

No bid shall be withdrawn after opening the bid without the consent of the City of Craig, for a period of 30 days after the scheduled time for opening bids.

The City of Craig reserves the right to reject any or all bids and to waive any informality in the bidding.

The bids must be filled out on the bid form provided. Bids shall be addressed to the City of Craig and shall have the name of the bidder and "**Wastewater Department Flatbed with 5000lb Crane**" written thereon.



4,000 PER CARL RAY

Chris Nichols

Chris Nichols, Mayor

Attest:

Katie Carmody
Katie Carmody, City Clerk

Published June 11, 18, and 25, 2025

City of Craig
300 W 4th Street
Craig, Colorado
Wastewater Department

Suggested Technical Specifications

Flatbed with 5000lb Crane for a 1 Ton Cab & Chassis

This specification describes the requirements for a flatbed with 5000lb crane for a 1-ton cab and chassis with dual rear wheels. The unit must be safe and efficient to operate and built strong and durable enough for heavy-duty operation over extended periods of time in a municipal setting. All standard equipment as shown in the manufacturer's printed literature must be included in the bid, plus any modifications to meet OSHA federal and state regulations in all respects. The unit must be new and of the manufacturer's current model year in production at the time of delivery, and not a model to be phased out of production. It is stressed that what follows are minimum specifications and while they mention only the salient descriptive points of the cab and chassis, they do not exclude any major or minor items not specifically mentioned, but which would normally and reasonably be necessary for proper, safe, efficient, and beneficial use and ownership.

Bidding instructions:

- A. Each technical item of these specifications shall be individually annotated by the bidder in the first column provided on the sheet with one of the following statements:
1. meets
 2. exceeds
 3. does not meet
 4. not applicable
- B. If any item is marked "exceeds", "does not meet", or "not applicable", details must be given in the second column provided, along with each entry describing what exactly is being bid.
- C. The individual cost of each item of the specifications must also be annotated if its cost has not been included in the basic bid price.
- D. Complete printed literature, publications, and photograph of the unit proposed must be included with each bid.

The vendor will please indicate the make, model, year and type of Flatbed and crane offered: 2026 VENCO VENTURO CRANE

The vendor will please indicate the location (country) where the cab and chassis offered was originally manufactured: CINCINNATI OHIO

Description	Compliance	Deviation
Platform		
Must be for 1 Ton Cab & Chassis/Dual rear wheels		
Cab to axle 84 inches		
Black in color		
Length 11'6"		12' Length
Width 96"		101" Wide
10,000lb receiver hitch/with trailer plug		20,000 lb.
Backup camera integrated into flatbed	X	
Stake Pockets sides and end	X	
6" slide in steel sides for sides and rear	X	
Tapered headboard with punched screen window		Rectangular w/ punched window
LED recessed lights, lights on all 4 corners of bed	X	
Rear mud flaps	X	
3rd brake light in headboard	X	
Center strobe light mounted on top of headboard with switch wired in cab	X	
Traffic Arrow mounted on back of headboard with switch wired in cab	X	
Crane		
4000lb capacity	X	
16ft fully extended	X	
Stowed boom length 9-10ft	X	
Single line speed 30 ft/min		25 ft/min
80ft of 5/16 cable	X	
Hardwired Controls	X	
Wireless remote control with tether	X	
Stabilizers		
Manual Jack legs that meet requirement from center line of truck for crane	X	
Toolboxes		
Two 30"x18"x18" under body toolboxes mounted to the frame in the front of flatbed	X	

Bed installers must stay in contact with the cab and chassis supplier and work together on measurement so bed will be on the truck and delivery of the truck to the City of Craig.

Bid Proposal Form
Flatbed with 4000lb Crane for a 1 Ton Cab & Chassis

The signer of this proposal declares and agrees:

That they have received and examined the bid specifications and is cognizant of the equipment requirements.

If this proposal is accepted, it will contract to furnish and deliver the required equipment as specified.

That they have the capability and will provide such adjustments and repairs as may be required under the manufacturer's warranty.

That the bid price is for equipment complete as specified, delivered F.O.B. Craig Colorado.

That the City of Craig reserves the right to reject any or all bids, re-bid or negotiate any bid, and to determine what piece of equipment is the proper one for the City, and not necessarily low bid.

Price of Flatbed with 4000lb Crane;	\$ <u>51,600.00</u>
Crane Warranty	\$ <u>0</u>
	<u>1 YEAR FACTORY WARRANTY</u>
Total Price	\$ <u>51,600.00</u>

Delivery will be made 90-120 days after receipt of order.

Company Name: K'S TONY MOTORS OF CRAIG INC
Address: 2705 WEST 1ST STREET
Phone Number: 970-462-0201
Signature: [Signature]
Printed Name: TONY MANCOTI'S
Date: 6-16-25



Quote
21802
June 26, 2025

Vogel Sales Inc
7080 Eudora Dr
Commerce City, CO 80022-1814
(303) 287-5732
sales@vsitrucks.com
Dealer # 41249

Victory Motors
2705 W 1st St
Craig, CO 81625-3643
(970) 462-0209
tony@victorymotors.com

Notes

Dealer Contact: Tony Maneotis
Email: tony@victorymotors.com

End User: Craig Colorado - Waste Water Department

12' Long x 101" Wide Flatbed, Treadplate Steel Deck, Rectangular headboard with punched window, Add 3rd brake light External rub rails with stake pockets (sides & rear), 20,000 lb. rated rear receiver hitch, 6" Tall slide in steel rails for sides & rear, Recessed LED light kit, Black powdercoat finish, OEM camera kit integrated into rear of bed, Two 30"x18"x18" underbody tool boxes at front of bed, Mudflaps included.

Reinforce curb side rear corner for crane installation, modify rear skirt & add jack-stand tube integrated into rear of flatbed.

Venco/Venturo 4016E Electric-Hydraulic crane, 4,000 lb. capacity, 16' reach, includes corded pendant control and wireless remote control, 250 amp circuit breaker, and adjustable boom rest. Mounted to curb side rear corner of flatbed.

Amber beacon mounted on top of headache rack, centered with switch wired in cab.
Traffic arrow board mounted high on back side of headboard with switch mounted in cab

Delta consolidated 50 gallon transfer tank with Fil-Rite 12v electric transfer pump. (Curb side front corner of bed)

Name	QTY/HRS
CM/RUGBY PL 12' PLATFORM KIT	1
CM/RUGBY PL 12' PLATFORM KIT	
Fabrication Install platform flatbed	10
Fabrication Install camera	1
Fabrication Build 6" high lift out side & rear racks	6
Fabrication Add 3rd brake light to headboard	1
Fabrication Fab bracket & install amber strobe light, top of headboard, centered	4
Fabrication Install 10 lighthouse arrowboard. Mounted to headboard.	4
Fabrication Install underbody tool boxes	2

Name	QTY/HRS
Fabrication Install transfer Tank & Pump	5
Fabrication build rear hitch brackets install rear cross tube for rear stabilizer crane jacks and rear hitch	16
Fabrication cut rear panel to cover brackets for rear hitch and stabilizer jacks (4 X 4 cross tube will show with stabilizer jacks on both ends)	8
Fabrication weld crane plate on top of bed and cross member	8
INSTALL KIT Misc. Fasteners, hose, etc for installation	1
CM PL 12' PLATFORM FLATBED QUOTE ONLY CM/RUGBY PL 12' PLATFORM FLATBED QUOTE ONLY	1
1801060L 2 1/2 HITCH - *DO NOT USE* BUYERS Hitch Receiver 2" Platform Body Cross	1
SA1447WDNH STAKE ASSY W/O HOLES 14GA 47IN	14
3/8 X 6 HR FLAT 3/8 X 6 HR FLAT	35
5621711	1
OPT-RBL10CA AMBER ROTARY BEACON LIGHT	1
SY800-LED-50-2 Superior Signal Directional LED Arrow Light	1
1702303 BUYERS 18 X 18 X 30" TOOLBOX BLACK	2
DCI485000 50 Gallon Steel Square Transfer Tank	1
FILFR1210HA 15GPM,12V DC PUMP,3/4IN X 12F HOSE,3/4IN AUTO	1
stabilizer jack	2
cross tube steel for rear hitch and stabilizer jacks	1
11GA HR SHEET 11GA HR SHEET	20
paint rear apron, hitch tube crane plate	1
5/8 PLATE A36 5/8 PLATE A36	4

Name	QTY/HRS
WS, FUEL FILL CHECK	1
LC \$70.00 - Weigh vehicle and check fuel fill if necessary	1
WS Weight slip	1
FUEL FILL CHECK Check fuel fill	1
FAST FLASH - CAB CHASS FAST FLASH - CAB CHASS	1
LKit **THIS TRUCK MAY HAVE A FAST FLASH WHEN BED IS INSTALLED. THIS MUST BE ADDRESSED BY AN AUTHORIZED DEALERSHIP. THIS WILL NOT FALL UNDER WARRANTY, AND MUST BE PAID BY CUSTOMER. VOGEL SALES INC IS UNABLE TO FIX THIS ISSUE**	0
VENCO CRANE Venco Crane	1
Fabrication Install crane	14
Fabrication Install stickers	1
62UF02 CRANE STICKER	10
LEAF SPRINGS QUOTE ONLY LEAF SPRINGS QUOTE ONLY	1
CRANE CERT CRANE CERT	1
EEAAAC-00R0 Venco 4016E Electric-Hydraulic Crane. 4,000 lb. max capacity, 16' Reach, Circuit Breaker	1
20381-2 Adjustable Boom Rest	1
FRT ESTIMATED FREIGHT-Venco to VSI	1

*TOTAL Installed
Body & CRANE
\$51,600.00*

DUE UPON RECEIPT

Any warranty on the item(s) sold hereby are those made by the manufacturer. The seller hereby expressly disclaims all warranties, either express or implied, including any implied warranty of merchant-ability or fitness for a particular purpose, and neither assumes nor authorizes any other person to assume for it any liability. Buyer shall not be entitled to recover from the selling dealer any consequential damages, damages to property, damages for loss of use, loss of time, loss of profits or income, or any other incidental damages.

No parts or labor warranty when used parts are installed.

Quote

Customer Signature

Page 3 of 3

ADVERTISEMENT FOR BID

The City of Craig is accepting bids to purchase **Wastewater Department One Ton Single Cab and Chassis 4x4 with Dual Rear Wheels**. Bids will be due at the Council Chambers at City Hall, 300 West Fourth Street, Craig, Colorado 81625, at 2:15 p.m., Tuesday, July 1st, 2025, at which time they will be opened and read aloud. The award for a bid will be at the July 8th, 2025, City Council meeting. Specifications may be obtained by contacting City Clerk Katie Carmody, at (970)826-2008 kcarmody@ci.craig.co.us.

No bid shall be withdrawn after opening the bid without the consent of the City of Craig, for a period of 30 days after the scheduled time for opening bids.

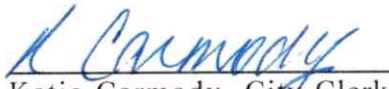
The City of Craig reserves the right to reject any or all bids and to waive any informality in the bidding.

The bids must be filled out on the bid form provided. Bids shall be addressed to the City of Craig and shall have the name of the bidder and "**Wastewater Department Cab and Chassis 4x4 with Dual Rear Wheels**" written thereon.




Chris Nichols, Mayor

Attest:


Katie Carmody, City Clerk

Published June 11, 18, and 25, 2025

City of Craig
300 W 4th Street
Craig, Colorado

Wastewater Department

Suggested Technical Specifications

One Ton Single Cab and Chassis 4x4 with Dual Rear Wheels

This specification describes the requirements for a 1-ton, 4-wheel drive cab and chassis with dual rear wheels. The unit must be safe and efficient to operate and built strong and durable enough for heavy-duty operation over extended periods of time in a municipal setting. All standard equipment as shown in the manufacturer's printed literature must be included in the bid, plus any modifications to meet OSHA federal and state regulations in all respects. The unit must be new and of the manufacturer's current model year in production at the time of delivery, and not a model to be phased out of production. It is stressed that what follows are minimum specifications and while they mention only the salient descriptive points of the cab and chassis, they do not exclude any major or minor items not specifically mentioned, but which would normally and reasonably be necessary for proper, safe, efficient, and beneficial use and ownership.

Bidding instructions:

- A. Each technical item of these specifications shall be individually annotated by the bidder in the first column provided on the sheet with one of the following statements:
1. meets
 2. exceeds
 3. does not meet
 4. not applicable
- B. If any item is marked "Exceeds", "Does not Meet", "Not Applicable" details must be given in the second column provided, along with each entry describing what exactly is being bid.
- C. The individual cost of each item of the specifications must also be annotated if its cost has not been included in the basic bid price.
- D. Complete printed literature, publications, and photograph of the unit proposed must be included with each bid.

The vendor will please indicate the make, model, year and type of cab and chassis & bed offered:

2026 Ford F-350 Chassis Cab w/ D5
Watson installed Bed

The vendor will please indicate the location (country) where the cab and chassis offered was originally manufactured: Louisville, Kentucky

Description	Compliance	Deviation
Model		
2025 1Ton 4x4 Single Cab Dual Rear Wheel Cab and Chassis	Meets	
Engine		
Gas 6.0 Liter or greater	Exceeds	
Transmission		
Automatic 6 speed heavy duty w/OD	Exceeds	
Differential		
Rear locking differential	Meets	
Tires		
Mud and Snow Radials 10ply	Does Not Meet	LT245 A/S 3805 Plus
One spare wheel and tire	Meets	
Cab		
Single Cab	meets	
Cloth heavy duty seats 40/20/40 with fold down console	Meets	
Vinyl floor covering with floor mats	Meets	
Gauges	Meets	
AM/FM Radio	Meets	
Trailer towing heated electric mirrors	Meets	
Delay Wipers	Meets	
Air Conditioning	Meets	
Tilt Steering Wheel	Meets	
Electric windows and door locks	Meets	
Cruise Control	Meets	
Suspension		
Heavy Duty springs and shocks	Meets	
Front-6000lb, Rear 9750lb GAWR	Does Not Meet	Front - 5200 Rear - 10,300 14,000 # 6VWR
Air Bags	Meets	
Other		
Heavy duty alternator 70amp minimum Battery 575 cold cranking AMP 130 min reserve capacity required for 12-volt DC operation	Exceeds	
Heavy duty radiator	Meets	
Engine oil cooler	Meets	
Transmission oil cooler	Meets	
4-wheel anti-lock brakes	Meets	
Engine block heater	Meets	
4 key fobs or keys	Meets	
2 speed transfer case	Meets	
Transfer case and engine skid plates	Meets	

Other Continued	Compliance	Deviation
Front Mounted Recovery Hooks	Meets	
Solid White in Color	Meets	
Heavy Duty Front Bumper	Meets	
36-gallon fuel tank	Exceeds	
Trailer towing package with rear electric towing plug	Meets	
Receiver hitch (10,000 lb.)	Meets	
Trailer brake controller installed in dash	Meets	
Auxiliary switches for lights and beacon	Meets	
Back up Camera	Meets	
Wheelbase		
165 inches	169"	
Cab to axle-84 inches	Meets	

Complete set of repair manuals for all components

Extended Warranty must be the best available.

-60 Months Extended bumper to bumper warranty
Including Elec components 100K Miles

\$ 2,150

The City of Craig may wish to use for trade-in:

Trade-in
2010 Dodge 3500 flatbed with crane (5-32)
VIN#3D6WZ4ETXBG505871

Price for Trade-in

\$ 9,000

The Cab & Chassis dealer must stay in contact with the company that is installing the bed on the truck. Making sure we have the right measurements for the bed to fit.

Bid Proposal Form

One Ton Single Cab and Chassis 4x4 with Dual Rear Wheels

The signer of this proposal declares and agrees:

That they have received and examined the bid specifications and are cognizant of the equipment requirements.

If this proposal is accepted, you will contract to furnish and deliver the required equipment as specified.

That they have the capability and will provide such adjustments and repairs as may be required under the manufacturer's warranty.

That the bid price is for equipment complete as specified, delivered F.O.B. Craig Colorado.

That the City of Craig reserves the right to reject any or all bids, re-bid or negotiate any bid, and to determine what piece of equipment is the proper one for the City, and not necessarily low bid.

Price of cab and chassis:	\$ 55,000
Price of extended warranty:	\$ 2,150
Less Trade: 2010 Dodge 3500 (5-32)	-(\$ 9,000)
Total Price after Trade:	\$ 48,150

Delivery will be made within 180-360 days days after receipt of the order.

Company Name: Sill-TerHar Motors Inc
Address: 150 Althe Street Broomfield CO 80020
Phone Number: 303-588-3052
Signature: [Signature]
Date: 6/30/25

City of Craig
300 W 4th Street
Craig, Colorado

Wastewater Department

Suggested Technical Specifications

Flatbed with 5000lb Crane for a 1 Ton Cab & Chassis

This specification describes the requirements for a flatbed with 5000lb crane for a 1-ton cab and chassis with dual rear wheels. The unit must be safe and efficient to operate and built strong and durable enough for heavy-duty operation over extended periods of time in a municipal setting. All standard equipment as shown in the manufacturer's printed literature must be included in the bid, plus any modifications to meet OSHA federal and state regulations in all respects. The unit must be new and of the manufacturer's current model year in production at the time of delivery, and not a model to be phased out of production. It is stressed that what follows are minimum specifications and while they mention only the salient descriptive points of the cab and chassis, they do not exclude any major or minor items not specifically mentioned, but which would normally and reasonably be necessary for proper, safe, efficient, and beneficial use and ownership.

Bidding instructions:

- A. Each technical item of these specifications shall be individually annotated by the bidder in the first column provided on the sheet with one of the following statements:
 - 1. meets
 - 2. exceeds
 - 3. does not meet
 - 4. not applicable
- B. If any item is marked "exceeds", "does not meet", or "not applicable", details must be given in the second column provided, along with each entry describing what exactly is being bid.
- C. The individual cost of each item of the specifications must also be annotated if its cost has not been included in the basic bid price.
- D. Complete printed literature, publications, and photograph of the unit proposed must be included with each bid.

The vendor will please indicate the make, model, year and type of Flatbed and crane offered: Bed Rock brand flatbed

Stellar EC4000 crane

The vendor will please indicate the location (country) where the cab and chassis offered was originally manufactured: NA

Description	Compliance	Deviation
Platform		
Must be for 1 Ton Cab & Chassis/Dual rear wheels	yes	
Cab to axle 84 inches	yes	
Black in color	yes	
Length 11'6"		11'4"
Width 96"	97"	
10,000lb receiver hitch/with trailer plug	18,000	
Backup camera integrated into flatbed	yes	
Stake Pockets sides and end	yes	
6" slide in steel sides for sides and rear	yes	
Tapered headboard with punched screen window	yes	
LED recessed lights, lights on all 4 corners of bed	yes	
Rear mud flaps	yes	
3 rd brake light in headboard		cutout to see OEM light
Center strobe light mounted on top of headboard with switch wired in cab	yes	
Traffic Arrow mounted on back of headboard with switch wired in cab	yes	
Crane		
4000lb capacity	yes	
16ft fully extended	yes	
Stowed boom length 9-10ft	8'	
Single line speed 30 ft/min	yes	
80ft of 5/16 cable	yes	
Hardwired Controls	Wireless	
Wireless remote control with tether	yes	
Stabilizers		
Manual Jack legs that meet requirement from center line of truck for crane	yes	
Toolboxes		
Two 30"x18"x18" under body toolboxes mounted to the frame in the front of flatbed	yes	

Bed installers must stay in contact with the cab and chassis supplier and work together on measurement so bed will be on the truck and delivery of the truck to the City of Craig.

Bid Proposal Form
Flatbed with 4000lb Crane for a 1 Ton Cab& Chassis

The signer of this proposal declares and agrees:

That they have received and examined the bid specifications and is cognizant of the equipment requirements.

If this proposal is accepted, it will contract to furnish and deliver the required equipment as specified.

That they have the capability and will provide such adjustments and repairs as may be required under the manufacturer's warranty.

That the bid price is for equipment complete as specified, delivered F.O.B. Craig Colorado.

That the City of Craig reserves the right to reject any or all bids, re-bid or negotiate any bid, and to determine what piece of equipment is the proper one for the City, and not necessarily low bid.

Price of Flatbed with 4000lb Crane;	\$ 42,729.00
Crane Warranty	\$ <u>Included 5 year structural/1 year parts</u>

Total Price	\$ <u>42,729</u>
-------------	------------------

Delivery will be made 180-270 days after receipt of order. depending on availability of crane

Company Name: O.J. Watson Equipment
Address: 5335 Franklin St, Denver, CO
Phone Number: 303-295-2885
Signature: *Craig Arndt*
Printed Name: Craig Arndt
Date: 6/26/2025



O.J. Watson Company, Inc.
5335 Franklin Street
Denver, Colorado 80216
303-295-2885 or 800-332-2124
Fax: 303-296-8049
www.ojwatson.com

Quotation

Page 1 of 3

Customer: CTYCRAI
City of Craig
300 W. 4th St.
Craig CO 81625

Contact:
Phone: (970) 824-5111
2nd:
Email:

Salesperson: Craig Arndt

Quote Number: CWA1678
Quote Date: 6/25/2025
Quote valid until: 7/25/2025
Revision Number: 0

Work Order:

Build Information:

Year / Make / Model	TBD	End User	
Cab Configuration		Unit #	
Fuel Type		Item / PO#	
CA / CT			
Rear Axle			

Quoted Items:

Description of Work

O.J. Watson is pleased to quote you the following installed truck equipment with specifications from the City of Craig "Flatbed with 4000# Crane"

Bed Rock brand flatbed
Model: Diamond Series
11'4" length
97" width
Full steel frame with 3" structural C-channel construction
1/8" steel diamond plate deck.
Stake pockets sides and rear of body
6" steel stakes
Lifetime LED lights that offer longevity & great visibility. DOT-approved.
7 blade RV plug
Bulkhead with additional stop/tail/turn LED lights
3/8th" x2" stake pockets
Straight rear
Integrated 2" receiver hitch rated at 18,000 pounds
7 blade RV plug
Body to be reinforced with 1/2" steel plate full welded to rear curbside corner for crane
Primed and painted black
Frame mounted mud flaps with anti sail behind duals

Completed truck weighed and certified.

Crane

Crane Rating: 16,000 ft-lbs
Standard Boom Length: 8' (2.44 m) from CL of crane
Boom Extension:
• 1st Stage: Hydraulic 48"
• 2nd Stage: Manual 48"
Maximum Horizontal Reach: 16' from CL of crane
Maximum Vertical Lift: 17' 4" from crane base
Lifting Capacity: 4,000 lbs @ 4' / 935 lbs @ 16'



O.J. Watson Company, Inc.
5335 Franklin Street
Denver, Colorado 80216
303-295-2885 or 800-332-2124
Fax: 303-296-8049
www.ojwatson.com

Quotation

Page 2 of 3

Description of Work

Boom Elevation: -5° to +80°
Stowed Height (crane only): 28.53"
Mounting Space Required: 19" x 19"
Approximate Crane Weight: 970 lbs
Controls: Radio remote
Winch
• Rope Diameter: 5/16"
• Rope Length: 90'
• Line Pull Speed: 15 ft/min
• Max. Single Part Line: 2,000 lbs
• Max. Double Part Line: 4,000 lbs
Rotation: 410° (worm gear) 410° (worm gear)
Power Supply Required: 12V power unit: 2 gpm @ 2,300 psi
Min. Rec. Chassis (GVRW)*: 14,000
Dual outriggers. Manual pull out/in. Crank jack down mounted at rear or body to chassis frame

Underbody Box

Buyers brand underbody tool box
18"x18"x30" length
14ga steel construction
Black powder coat finish
Locking stainless steel T handle latch
Mounted on both street side and curbside behind cab ahead of rear duals

Lighting

Buyers brand arrow board
Extruded aluminum with adjustable arrow points
72 LEDs - 18 LED modules with 4 LEDs each
12-24V DC Controller with LED lamp display
25 ft. cord with color-coded terminal block
8 directional and warning flash patterns
Quick access button for left or right directional arrow selection
Controller allows visible preview of pattern selection without light bar operating
Installed on rear cab protector or flatbed
Center horizontal of arrow board level with top of cab protector

North American LED beacon
Amber in color
Mounted to Weather Guard round strobe mount
Mounted center front of cab protector
Wired to chassis upfit switch key hot

Total Price Not Including Options: \$42,729.00

Optional Items:

Options	Amount	Accepted Yes / No
---------	--------	----------------------

Notes:

➤ *All pricing is good for -30- days from date of quotation*



O.J. Watson Company, Inc.
5335 Franklin Street
Denver, Colorado 80216
303-295-2885 or 800-332-2124
Fax: 303-296-8049
www.ojwatson.com

Quotation

Page 3 of 3

- All quotes are F.O.B. Denver unless otherwise stated.
- Quotes are subject to all applicable sales and use taxes including F.R.E.T.
- Open Account Terms are Net 30 upon delivery.
- Cash Account Term is payment at time of delivery (cash/check/credit card) and is subject to a 50% deposit requirement upon initial order.
- All credit card transactions over \$7,000.00 will be subject to a 3% processing fee.
- Carry Vehicle is NOT included in pricing unless specifically called out under Quoted Items.
- The contents of this quote are confidential and not intended for distribution. It is strictly forbidden to share this quote with any third party without written consent from O.J. Watson Equipment.

Accepted

By: _____ Quoted By: _____

Date: _____

Date: _____



O.J. Watson Company, Inc.
932 "D" Street
Greeley, Colorado 80631
Phone: 970-353-4918
Fax: 970-351-7138
www.ojwatson.com

Quotation

Page 1 of 2

CTYCRAI
Customer: City of Craig
300 W. 4th St.
Craig CO 81625

Contact: Katie Carmody
Phone: (970) 824-5111
2nd :
Email: kcarmony@ci.craig.co.us

Salesperson: gwern

Quote Number: BSR1786
Quote Date: 7/1/2025
Quote valid until: 7/31/2025
Revision Number: 0

Work Order:
PO Number:

Build Information:

Year / Make / Model	2025 3500 14500 Min. GVWR	End User	CITY OF CRAIG WASTEWATER DEPT
Cab Configuration	REGULAR	Unit #	
Fuel Type		Item / PO#	
CA / CT	84"	VIN	
Rear Axle	DRW	Key #	

Quoted Items:

Description of Work

Furnish and install Cadet Western Steel Flatbed W11'6"X96" Stake pockets sides and end. 3rd Brake light, 16"x16" crane reinforcing plate C/S rear, Steel 6" solid drop in sides, 7" step bumper, Black Finish
Description: Western-11'6"-96" -4" Structural Long Sills on--34.25" Width -NO GC with Hitchball-- 84"X40" Roll Tube Header with SS Pockets and Rubrail on 3 Sides- Tag&Lights -LED, Lights -9cl-- 2 Red S&T Tail Lights and 2 Red S&T with Cyclops Backup Tail Lights--Oval Taillights- CENTER BACK UP LIGHT IN MIDDLE OF HEADER- CLASS 5, 2 1/2" Receiver Tube-7" Step 16" X16" THICK CRANE PLATE AT CURB SIDE REAR CORNER- THIS UNIT GETS 6" SOLID LIFT OUT SIDES ON SIDES ONLY
Steel drop in 6"sides rear end, omits tailgate, Black finish
Class 1 6.5" LED Amber Strobe Beacon, wired to dash switch thru steel conduit
Superior signal Traffic arrow model SY800, installed on the back of the headboard w/controller wired key hot
Corner LED lights recessed
Class 5, 2.5" receiver tube
OJW rear mud flaps w/anti sail galvanized brackets.
Camera, OEM furnished wired to chassis system w/mounting kit
Fuel fill, OEM provided Kit installed in side of flatbed
Underbed toolbox 18" X18" X 30" Located Curb and Street side front, Black finish
PDI, weight tickets & Misc.

Furnish and install Stellar® EC4000 Telescopic Crane - 16' Model - 16,000 ft/lb, 4000 lb. maximum capacity, 12V electric/hydraulic only, hydraulic/manual reach to 16', four-function radio remote standard, 12V electric planetary winch with 16 ft./min. maximum single line speed, double acting cylinders with integral counterbalance valves, gear bearing rotation system, double boom design. Painted white. (EC Power Option PN 44649 recommended with this crane) REQUIRES MINIMUM GVWR 14500#
Stellar Boom Rest

Auxiliary 12-volt deep cycle crane battery wired to chassis system, located in a 15" x 15" x13" " Steel box, Black finish

OJW Stabilizer cross tube and manual pull out crank down screw jacks, Black finish

Total Price not including Options or Taxes: \$42,024.00




O.J. Watson Company, Inc.
932 "D" Street
Greeley, Colorado 80631
Phone: 970-353-4918
Fax: 970-351-7138
www.ojwatson.com

Quotation

Page 2 of 2

Notes: FOB-DELIVER TO Craig Colorado

- *All pricing is good for -30- days from date of quotation*
- All quotes are F.O.B. Greeley unless otherwise stated.
- Quotes are subject to all applicable sales and use taxes including F.R.E.T.
- Open Account Terms are Net 30 upon delivery.
- Cash Account Term is payment at time of delivery (cash/check/credit card) and is subject to a 50% deposit requirement upon initial order.
- All credit card transactions over \$7,000.00 will be subject to a 3% processing fee.
- Carry Vehicle is NOT included in pricing unless specifically called out under Quoted Items.
- The contents of this quote are confidential and not intended for distribution. It is strictly forbidden to share this quote with any third party without written consent from O.J. Watson Equipment.

Accepted By: _____ Quoted By: 
Date: _____ Date: 7-1-2025

City of Craig
300 W 4th Street
Craig, Colorado
Wastewater Department
Suggested Technical Specifications

Flatbed with 5000lb Crane for a 1 Ton Cab & Chassis

This specification describes the requirements for a flatbed with 5000lb crane for a 1-ton cab and chassis with dual rear wheels. The unit must be safe and efficient to operate and built strong and durable enough for heavy-duty operation over extended periods of time in a municipal setting. All standard equipment as shown in the manufacturer's printed literature must be included in the bid, plus any modifications to meet OSHA federal and state regulations in all respects. The unit must be new and of the manufacturer's current model year in production at the time of delivery, and not a model to be phased out of production. It is stressed that what follows are minimum specifications and while they mention only the salient descriptive points of the cab and chassis, they do not exclude any major or minor items not specifically mentioned, but which would normally and reasonably be necessary for proper, safe, efficient, and beneficial use and ownership.

Bidding instructions:

- A. Each technical item of these specifications shall be individually annotated by the bidder in the first column provided on the sheet with one of the following statements:
 - 1. meets
 - 2. exceeds
 - 3. does not meet
 - 4. not applicable
- B. If any item is marked "exceeds", "does not meet", or "not applicable", details must be given in the second column provided, along with each entry describing what exactly is being bid.
- C. The individual cost of each item of the specifications must also be annotated if its cost has not been included in the basic bid price.
- D. Complete printed literature, publications, and photograph of the unit proposed must be included with each bid.

The vendor will please indicate the make, model, year and type of Flatbed and crane offered: GADET, WESTERN, 2025 STEEL FLATBED.

STELLAR ECHO 2025 TELESCOPIC CRANE

The vendor will please indicate the location (country) where the cab and chassis offered was originally manufactured: N/A

Bid Proposal Form
Flatbed with 4000lb Crane for a 1 Ton Cab& Chassis

The signer of this proposal declares and agrees:

That they have received and examined the bid specifications and is cognizant of the equipment requirements.

If this proposal is accepted, it will contract to furnish and deliver the required equipment as specified.

That they have the capability and will provide such adjustments and repairs as may be required under the manufacturer's warranty.

That the bid price is for equipment complete as specified, delivered F.O.B. Craig Colorado.

That the City of Craig reserves the right to reject any or all bids, re-bid or negotiate any bid, and to determine what piece of equipment is the proper one for the City, and not necessarily low bid.

Price of Flatbed with 4000lb Crane; \$ 42,024.⁰⁰
Crane Warranty \$ INCL.

Total Price \$ 42,024.⁰⁰

Delivery will be made 120 days after receipt of order.

Company Name: OTWATSON CO. INC.
Address: 932 DSt. GIBBIE RD 80631
Phone Number: 970.353.4918
Signature: [Signature]
Printed Name: GARY WERNING
Date: 7-1-2025

Description	Compliance	Deviation
Platform		
Must be for 1 Ton Cab & Chassis/Dual rear wheels	MEETS	
Cab to axle 84 inches	✓	
Black in color	✓	
Length 11'6"	✓	
Width 96"	✓	
10,000lb receiver hitch/with trailer plug	✓	
Backup camera integrated into flatbed	✓	
Stake Pockets sides and end	✓	
6" slide in steel sides for sides and rear	✓	
Tapered headboard with punched screen window	DOES NOT MEET	LOWEDED
LED recessed lights, lights on all 4 corners of bed	MEETS	
Rear mud flaps	✓	
3 rd brake light in headboard	✓	
Center strobe light mounted on top of headboard with switch wired in cab	✓	
Traffic Arrow mounted on back of headboard with switch wired in cab	✓	
Crane		
4000lb capacity	MEETS	
16ft fully extended	✓	
Stowed boom length 9-10ft	DOES NOT MEET	8' BOOM LENGTH
Single line speed 30 ft/min	MEETS	
80ft of 5/16 cable	DOES NOT MEET	90' 5/16" CABLE
Hardwired Controls	MEETS	
Wireless remote control with tether	✓	
Stabilizers	✓	
Manual Jack legs that meet requirement from center line of truck for crane	MEETS	
Toolboxes		
Two 30"x18"x18" under body toolboxes mounted to the frame in the front of flatbed	MEETS	

Bed installers must stay in contact with the cab and chassis supplier and work together on measurement so bed will be on the truck and delivery of the truck to the City of Craig.

Cadet

Truck Bodies



Some options shown

Standard Western Features

- 8'6" and below 12ga Tread Plate
- 9' and above 1/8" Nominal Tread Plate
- 4" Structural Channel Long Sills
- 3" Structural Channel Crossmembers
- 40" Rolled Tube Header
- Recessed Tag Bracket w/Light
- 5" Structural Channel Step
- Side Pockets w/RR & Spooling
- 6 1/2 "x 13" Plasma Cut Taillight Holes for Chassis Mounted Lights
- 7 Red, 2 Amber Clearance Lights (LED)
- Paint: Black Polyurethane
- All Weather Under-coating
- Weatherproof Wiring Harness

Western

Model	Length	Width	Approx. Weight	C.A.
W7-72	84	72	645	N/A
W7-84	84	84	720	N/A
W8-84	96	84	795	56.5
W8'6"-84	102	84	880	56.5
W8-96	96	96	925	56.5
W8'6"-96	102	96	960	56.5
W9-84	108	84	935	60
W9-90	108	90	1020	60
W9-96	108	96	1000	60
W9'6"-96	114	96	1045	60
W10-90	120	90	1075	84
W10-96	120	96	1140	84
W11-96	132	96	1215	84
→ W11'6"-96	138	96	1245	84
W12-96	144	96	1285	84
W14-96	168	96	1485	N/A

Western Options

- Expanded Metal Window
- Gooseneck Compartment w/Ball 30,000#
- Four (4) Back Pockets (installed)
- Square Header
- Tapered Header
- 5" Long Sills
- 7" Step 2" Receiver Tube Class 3 rated, D-Rings & 7-way Plug (PICTURED)
- Stop, Turn, Cyclops (LED) Lights (PICTURED)

Cadet Mfg., Inc.

1125 East Main St
Chouteau, OK 74337

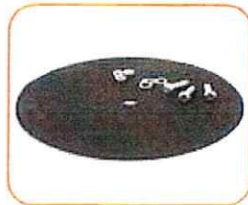
www.cadettruckbodies.com
sales@cadettruckbodies.com

Monday-Friday 7:00AM-4:30pm
(918) 476-8159 Phone



[Home](#) | [Lighting](#) | [Warning Lights](#) | [Beacon Strobe Lights](#)

CLASS 1 6.5 INCH WIDE LED STROBE BEACON



Rated SAE J845 Class 1.

Available with magnetic mounting and an auxiliary plug or permanent mounting with blunt-cut wires.

Backed with a 5 year warranty.

Buyers Products 6.5 Inch LED Beacon is rated SAE J845 Class 1 and features 15 flash patterns. It is available with either a magnetic mount and auxiliary plug or permanent mount and 9 ft wires with blunt cut ends.

The light is backed with a 5 year warranty.

Product Common Use: Snow Plows, Work Trucks, Construction Vehicles, Landscapers



TECHNICAL SPECIFICATION GUIDE

SPECIFICATION INFORMATION

	16' OPTION	20' OPTION
Crane Rating:	16,000 ft-lb (2.21 tm)	16,000 ft-lb (2.21 tm)
Standard Boom Length:	8' (2.44 m) from CL of Crane	10' (3.05 m) from CL of Crane
Boom Extension:		
• 1st stage:	Hydraulic 48" (121.9 cm)	Hydraulic 60" (152.4 cm)
• 2nd stage:	Manual 48" (121.9 cm)	Manual 60" (152.4 cm)
Max. Horizontal Reach:	16' (4.88 m) from CL of Crane	20' (6.10 m) from CL of Crane
Maximum Vertical Lift: (from crane base)	17' 4" (5.28 m)	21' 3" (6.48 m)
Boom Elevation:	-5 to +80 degree	-5 to +80 degree
Stowed Height:	28.53" (72.47 cm)	29.53" (75 cm)
Mounting Space Required:	19" x 19" (48.3 x 48.3 cm)	19" x 19" (48.3 x 48.3 cm)
Shipping Weight:	970 lbs (440 kg)	1180 lbs (535 kg)
Controls:	Radio control standard for all functions	Radio control standard for all functions
Winch		
• Rope Length:	90' (27.4 m)	90' (27.4 m)
• Rope Diameter:	5/16" (.79 cm)	5/16" (.79 cm)
• Line pull speed:	15 ft/min (4.6 m/min)	15 ft/min (4.6 m/min)
• Max. single part line:	2000 lbs (905 Kg)	2000 lbs (905 Kg)
• Max. double part line:	4000 lbs (1815 Kg)	4000 lbs (1815 Kg)
Rotation:	410 degree power (worm gear)	410 degree power (worm gear)
Lifting Capacities:	4000 lbs @ 4' (1814 Kg @ 1.22 m) 935 lbs @ 16' (420 Kg @ 4.88 m)	4000 lbs @ 4' (1814 Kg @ 1.22 m) 800 lbs @ 20' (363 Kg @ 6.1 m)
Power Supply Required:	12 volt power unit 2.0 gpm @ 2300 psi (7.57 lpm @ 159 bars)	12 volt power unit 2.0 gpm @ 2300 psi (7.57 lpm @ 159 bars)
Min. Rec. Chassis (GVRW)	14,500	14,500

DEFINING CHARACTERISTICS

Planetary Drive Winch System

The winch is equipped with a 1.8 HP permanent magnet electric motor with a 315:1 planetary gear reduction system. This ensures that your winch will never quit lifting before it reaches the full rated capacity.

Double Boom Design

The double boom design makes it nearly twice as strong as the nearest competitor.

Gear Bearing Rotation

Uses same rotation system as the larger class cranes. There are no plastic bushings or brass gears in the rotation system. It uses a high strength steel ball bearing turntable gear, a high strength steel worm gear, and a cast steel worm gear housing.

Integral Rotation Stop

410 degrees of rotation with an integrated rotation stop. Integrated stops allow you the greatest performance while protecting wires and hoses from damage.

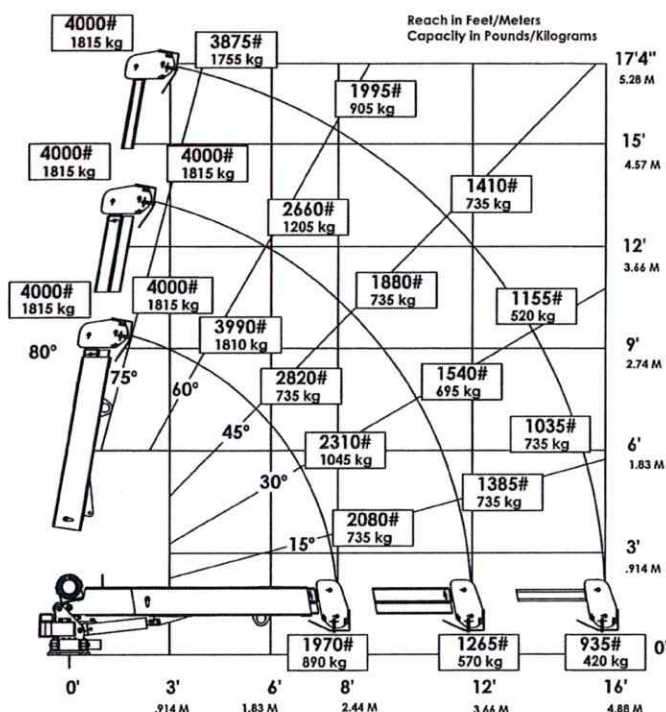
16' or 20' of Reach

Hydraulic 1st stage extension. Manual 2nd stage extension.

Radio Remote

Comes standard with a radio remote control.

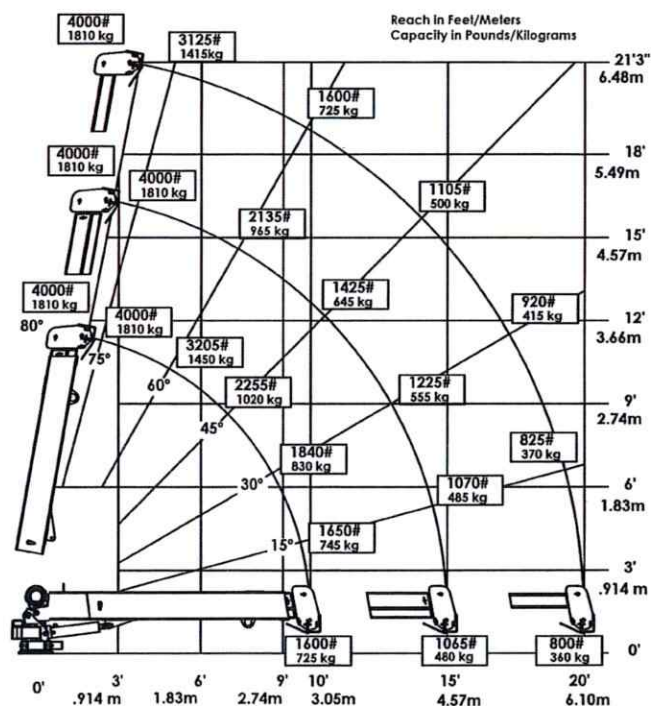
■ EC4000 CAPACITY CHART (16' SERIES)



Weight of load handling devices are part of the load lifted and must be deducted from the capacity.

Maximum 1 - part line capacity is 2000 lbs. (905 kg). For greater loads, use 2 - part line.

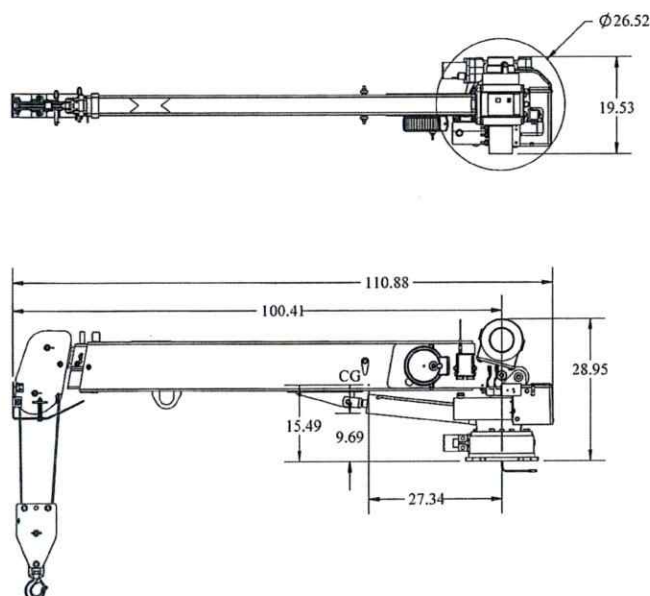
■ EC4000 CAPACITY CHART (20' SERIES)



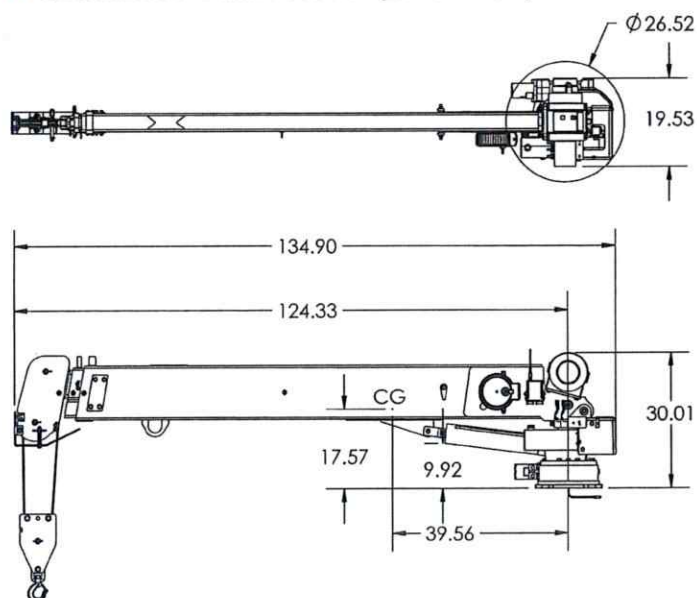
Weight of load handling devices are part of the load lifted and must be deducted from the capacity.

Maximum 1 - part line capacity is 2000 lbs. (905 kg). For greater loads, use 2 - part line.

■ GEOMETRIC DIMENSIONS (16' OPTION)



■ GEOMETRIC DIMENSIONS (20' OPTION)





AI Mode All Shopping Images Videos Short videos Forums More

Tools



stellarindustries.com

<https://www.stellarindustries.com> » support » warranty

Warranty - Stellar Industries

This program provides all registered equipment with **two full years of warranty coverage**, from in-service date, on parts and repair.



AI Overview



The Stellar EC4000 crane typically comes with a standard warranty of 12 months from the date of initial installation or commissioning, or 2,400 hours of operation, or 24 months from the date of shipment by Stellar, whichever occurs first. Stellar also offers an extended warranty program for registered equipment users, potentially providing two years of coverage on parts and repair from the in-service date.



Here's a breakdown:

Standard Warranty:

The general warranty period for Stellar cranes is as follows:

- 12 months from initial installation or commissioning.
- 24 months from the date of shipment by Stellar.
- 2,400 hours of operation.

Extended Warranty:

Stellar's extended warranty program, available to registered users, provides two years of coverage on parts and repair from the in-service date.

Unregistered Equipment:

Equipment not registered with Stellar will be covered under the standard warranty.

Warranty Service:

Warranty service is typically performed by authorized Stellar distributors or service centers.

Warranty Obligations:

To maintain warranty coverage, it's crucial to use Stellar parts for repairs and avoid unauthorized modifications or alterations, according to Stellar Industries.

Warranty - Stellar Industries

Stellar works hard to provide premium equipment that offers versatility,...

Stellar Industries

Limited Warranty Statement - Stellar Industries

Cranes, Hooklift Hoists, Cable Hoists, Container Carriers, and Service Trucks: * 5 Year Warranty. Five (5) years fro...

stellarindustries.com

Limited Stellar

Apr 17, Warrant
 stell

Dive deeper in AI Mode

AI responses may include mistakes. [Learn more](#)

