



West Dundee Village Newsletter

FALL / WINTER
2012

Dickens in Dundee

Join us for the Dundee area's **25th annual** classic holiday celebration!

This year, we are also celebrating the 200th anniversary of Charles Dickens' birth.

(Locations are in West Dundee unless otherwise noted.)

Friday, November 30th

- | | |
|----------|--|
| 6 pm | East Dundee Tree Lighting & Ice Skating Rink - The Depot, 319 River St, East Dundee |
| 7 pm | West Dundee Tree Lighting Ceremony - Village Hall, 102 S 2nd St |
| 6 - 8 pm | Living Windows - Main St, Downtown West Dundee |
| | Warming House (cookies, cocoa & Santa!) - Village Hall, 102 S 2nd St |
| 7:30 pm | Fezziwig's Family Festivities - Emmett's Tavern & Brewery, 128 W Main St, 1st floor |

Saturday, December 1st

- | | |
|--------------|---|
| 10 am | Spirit of Christmas Parade - Main St; 2nd St in West Dundee to River St in East Dundee |
| 10:30 am | Santa's Workshop (crafts & Santa under the tent), Festival of Trees Decorating Contest , |
| - 1:30 pm | Santa's Petting Zoo and Community Giving Tree (donate hats, gloves, scarves and non-perishable foods) - Grafelman Park, 5th & Main |
| | Gingerbread Village (1 kit per family) - 1st United Methodist Church, 318 W Main |
| | Children's Games - Children's House Montessori School, 417 W Main |
| 1:30 pm | Reading of A Christmas Carol - Mansion Bed and Breakfast, 305 Oregon Ave |
| 9 am - 3 pm | Cookie Walk, Bazaar & Nativity Walk - 1st Congregational Church, 900 S 8th |
| | Sweets & Crafts Shop - 1st United Methodist Church, 318 W Main |
| | Dickens of a Sale (Historical Society) - Bethlehem Lutheran Church, 410 W Main |
| | VFW Craft Fair - VFW Post, 117 S First |
| 10 am - 6 pm | Christmas Tree Sales (Lions Club) - Grafelman Park Tennis Courts, 4th & Washington |
| | Ice Skating Rink (weather permitting) - The Depot, 319 River St, East Dundee |
| 11 am - 2 pm | Bethlehem Kitchen (soup/sandwiches/cocoa) - Bethlehem Lutheran Church, 410 W Main |
| 3 pm | A Christmas Carol Movie (1938 version) with free popcorn & refreshments - Fox River Valley Library District, 555 Barrington Ave, East Dundee |
| 5 - 8 pm | <u>Dickens' Christmas Dinner</u> (reservations only) - Randall Oaks, 4101 Binnie Road |

For more information visit www.dickensindundee.org

The **West Dundee Village Newsletter** is published quarterly as a public information service for Village residents and businesses.

VILLAGE BOARD

West Dundee is governed by a Village President & Board of Trustees, elected at-large.

The Village Manager is responsible for the administration of Village activities and services.

Village President	Larry Keller
Village Board of Trustees	Rebecca Gillam Patrick Hanley Norm Osth Thomas Price Julie Voss Andy Yuscka
Village Manager	Joseph Cavallaro

The **Village Board meets** on the **1st** and **3rd Mondays** of each month at **7:30 pm** at **Village Hall** unless otherwise noted. The public is invited to attend and citizen participation is encouraged.

HOURS OF OPERATION

Village Hall: 102 S. Second Street	Monday - Friday 8:00 am - 4:30 pm
Public Safety Center #1: 555 S. Eighth Street (Rt. 31)	Monday - Friday 8:00 am - 6:00 pm
Public Safety Center #2: 100 Carrington Drive	Monday - Friday 8:00 am - 4:30 pm
Public Works: 900 Angle Tarn	Monday - Friday 7:30 am - 3:30 pm

IMPORTANT PHONE NUMBERS

Police/Fire Emergency	911
Non-Emergency Dispatch	847-428-8784
Village Hall	847-551-3800
Police Administration (PSC 1)	847-551-3810
Public Works	847-551-3815
Fire Administration, Community Development & Building (PSC 2)	847-551-3805

CALENDAR OF EVENTS

October

- 22 **Early Voting Begins**
Monday-Friday at Village Hall 9am-4pm
31 **HALLOWEEN** Trick or Treat Hours 3-7 pm

November

- 1 **Last Day for Early Voting** 9am-4pm
1 Winter Parking Ban Begins 2-6 am
4 **DAYLIGHT SAVINGS** - *Fall Back at 2am*
5 Regular Board Meeting 7:30 pm
6 **Election Day - Polls Open** 6am-7pm
6 Appearance Review Commission 7:30 pm
19 Regular Board Meeting 7:30 pm
22+23 **Village Offices Closed** - *Thanksgiving*
24 **SATURDAY Refuse Collection**
26 Planning & Zoning Commission 7:30 pm
30 **Final Yard Waste Collection**
Fall Leaf Collection Program Ends
30 **Dickens in Dundee** (dickensindundee.org)

December

- 1 **Dickens in Dundee** (dickensindundee.org)
3 Regular Board Meeting 7:30 pm
4 Appearance Review Commission 7:30 pm
17 Regular Board Meeting 7:30 pm
24+25 **Village Offices Closed** - *Christmas*
29 **SATURDAY Refuse Collection**
31 **Village Offices Closed** - *New Years Eve*

January

- 1 **Village Offices Closed** - *New Years Day*
5 **SATURDAY Refuse Collection**
Christmas Tree Collection (see page 4)
7 Regular Board Meeting 7:30 pm
8 Appearance Review Commission 7:30 pm
7 **Christmas Tree Collection (see page 4)**
21 Regular Board Meeting 7:30 pm
28 Planning & Zoning Commission 7:30 pm

Please visit our website at **wdundee.org** for meeting agendas, news and information.

REFUSE TOTER PROGRAM - COMING SOON

The Village of West Dundee has successfully renegotiated an extension of our existing refuse, recycling and yard waste collection contract with [Republic Services](#) (also known as Allied Waste).

The Village negotiated with Republic jointly with our neighboring community of Carpentersville to achieve a favorable renewal program. These negotiations have resulted in a 0% increase in collection costs for the next 2 years, maintaining a monthly cost of \$22.33 per household. This cost is paid by the Village, not the homeowner. A 2% increase has been negotiated for each of the subsequent 5 years of the agreement.

The program that is currently in place will be maintained, which includes unlimited curbside refuse collection, recycling collection and yard waste collection between April and November without any sticker purchase requirements.



The only change to the program is that Republic has agreed to provide, at no increased cost, 96-gallon refuse toters. The toters will replace your existing refuse containers, which, in the past, had to be purchased and maintained by the individual homeowners.

The service provider will be delivering a refuse toter to each individual property of 3 units or less that receives service through the Village of West Dundee. The anticipated delivery date for the toters is the first week of November. Toters will be delivered to the curb.

The new program encourages the sole use of these toters for refuse collection. We are asking that when at all possible, **please place all of your refuse materials in the 96-gallon toter** to simplify the collection day process. However, large items will continue to be collected at the curbside, when placed outside of the toter.

We are pleased and excited to continue our relationship with Republic under these favorable terms and conditions. Through these efforts, the Village of West Dundee is fortunate that refuse collection can continue to be provided without direct cost to the households receiving this service.

EARLY VOTING & ELECTION DAY

Election day is **Tuesday, November 6** for the President of the United States and other elected positions. Polls will be open from **6 am to 7 pm** at each precinct.

[Early voting](#) began **Monday, October 22, 2012** and continues **through Thursday, November 1, 2012** at Village Hall, 102 S. Second Street, from 9 am to 4 pm weekdays.

To confirm your voter registration, identify your polling place, view a sample ballot, obtain information on absentee ballots or find other information about voting, please visit www.kanecountyelections.org.



FALL LEAF COLLECTION PROGRAM

The Village's annual Leaf Collection Program has begun and will continue **until November 30**.

Please rake leaves into the street approximately one foot from the curb. Be sure the pile consists of **leaves only**, and is free of sticks, rocks, and other debris that will damage leaf collection equipment.

Public Works crews try to clear each street at least once per week. After the leaves are collected from your street, please wait a few days before placing more leaves on the street. Remember, it is a violation of the Village Ordinance to burn leaves.

To prevent injury, please do not allow children to play in or around leaf piles in the street. Don't park vehicles over leaf piles. Parking over leaves obstructs the collection process, and the heat from exhaust pipes can start the leaves on fire.

Leaves can also be bagged for disposal as yard waste. Please remember that **curbside yard waste collection also ends on November 30**. Place bagged leaves on the curb in a craft bag or open garbage can no earlier than Thursday. Do not mix leaves with regular household trash. After November 30, yard waste should be stored for disposal in the spring.



HALLOWEEN HOURS & SAFETY

Trick or Treat hours will be on **Wednesday, October 31st from 3-7 pm** in the Village of West Dundee and most of our neighboring communities.

For a safe and fun Halloween, please observe the following basic safety precautions provided by your Fire & Police Departments.

- Make sure that costumes are of non-flammable material. Instruct children to "Stop, Drop and Roll" in the event of a clothing fire. Instead of candle-lit pumpkins, substitute the candle with a flashlight or battery operated light. Do not place dry cornstalks or other decorations near fireplaces or any other heat source.
- Walk, never run, across the street. Do not walk in the streets - use sidewalks and crosswalks.
- Avoid costumes with masks, as masks restrict vision. Consider face paint instead. Make sure that costumes are brightly colored and do not impair mobility. Decorate your child's costume with reflective tape to increase motorist visibility.
- Parents - Always accompany your children. Advise them never to enter a stranger's home. Instruct your children not to eat any of their treats until after they get home and you have checked for any possible contaminants.



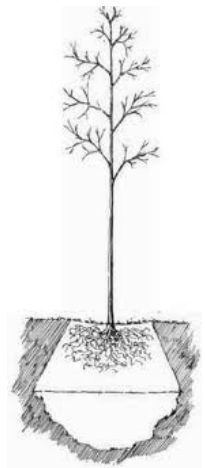
2012 PARKWAY TREE REPLACEMENT PROGRAM

Within its initial budget process this year, the Village Board was able to allocate \$15,000 towards the annual parkway tree planting program, which due to economic conditions and budgetary cutbacks was not funded during fiscal years 2008, 2009 and 2010.

Unfortunately, given the decimation of the Ash trees within the community by the Emerald Ash Borer, our tree planting list has grown from 150 planting locations over in 2010 to over 450 locations, with over 250 new locations added this year alone.

In light of the significant increase in replacement locations, and participation in the 50/50 shared cost program by the Grand Pointe and Fairhills Homeowners Associations, the Village Board has authorized an increase of the \$11,500 in budgetary amount for this year's tree planting program, for a total of \$26,500.

A notice has been mailed out to all addresses currently on the waiting list for a replacement parkway tree, indicating whether a tree will be planted and instruction for the next steps to be taken. Trees will be planted in the first part of November.



NEW BUSINESSES IN WEST DUNDEE

The Village of West Dundee is proud to announce the opening of several new businesses:

A new freestanding restaurant has opened at 629 S. Eighth Street (Rt. 31) in the Century Plaza Shopping Center. [West End Restaurant and Bar](#) is a contemporary American family restaurant serving a variety of breakfast, lunch and dinner options at a great price.

The historic downtown business district is home to two new businesses that are open to the public. Duo Styles is a hair salon located at 123 W. Main Street. [d'ziner 45](#), located at 121 W. Main Street offers custom tailoring and alterations in addition to garment design.

[Jerry's Hockey Warehouse](#) has opened up shop at [Leaf's Ice Center](#) on Wesseman Drive. An auto parts distribution center, [MaxZone](#), is currently under construction in the Oakview Corporate Park.

The new [Randall Oaks Recreation Center](#) is open for business at 500 N. Randall Road, south of Randall Oaks Park. The facility offers recreation and sports programs, a fitness center, a branch of the [Fox River Valley Library District](#) (formerly Dundee Township Library District) and much more.

A state of the art fitness club, [LA Fitness](#), will be opening very soon at 400 N. 8th St. Memberships can be purchased at their pre-enrollment office in the Spring Hill Gateway Center, at 836 W. Main.

[Spring Hill Mall](#) is proud to welcome Hickory Farms, Avon, Toys R Us, Walkin Animals, Pro Image, ANG Shoes, Puppy Steps, Zeen clothing, Glitter, Charley's Grilled Subs, Cricket Wireless, T-Mobile, My TV Satellite Systems, American Home Improvers and 21st Century Convenience.

The Spring Hill Executive Center, located on the west side of the Spring Hill Ring Road, is now home to [New Era Income Tax and Notary Services](#), [Advanced Preventive Cardiology](#) and [Amusement & Music Operators Association](#).

[Spirit Halloween](#) has opened for the season in the former Best Buy space, next to [Target](#).

ATTRACTING & RETAINING RETAILERS RESIDENTS DESIRE

From time to time, residents contact the Village to suggest that the Village work to bring one or more of their favorite stores to West Dundee. The Village appreciates these suggestions and does work to attract the retailers that are desired by residents to our commercial areas. Unfortunately, the decisions made by retailers are more complicated. If getting stores to locate in West Dundee were as simple as the Village making contact with retailers, then all the available storefronts in the community would be filled with retailers desired by residents.

The Village of West Dundee and the specific demographic and buying power of our 2,693 households do not drive the overall market condition for the Dundee area. Retailers base their decisions about where to keep stores open and where to locate new stores on demographics, traffic counts, competing commercial properties and size of existing and new stores. West Dundee is part of a much broader trade area with significant competition from other nearby commercial properties.

To retain and attract retailers, the Village works with consultants specializing in retail locations, to view the community as retailers view the community. We also work with property owners, including the owners of [Spring Hill Mall](#), real estate brokers, and in the case of foreclosed properties such as Spring Hill Gateway and the Clearwater Theater, we work with the banks and the court.

Although retailer's decisions about location are complex, the Village can be effective in economic development efforts. The Village offers a variety of programs designed to retain and attract business. Some significant recent successes include the new [LA Fitness](#) scheduled to open next month, completion of a retention effort to secure a lease extension for [Petco](#) at its present location, construction of a new 230,000 sq. ft. light industrial facility in Oakview Corporate Park, and the recent sale of Clearwater Theater.

The Village will continue to work aggressively to retain and attract retailers and businesses that are appropriate for West Dundee. We appreciate suggestions from residents and encourage you to continue to patronize West Dundee businesses as much as possible and to encourage your friends and neighbors to do the same.

Shopping locally helps to improve the marketability of the trade area and helps to retain retailers and other businesses. Most national stores have daily sales quotas. If a store does not meet the daily sales quota it is determined to be an underperformer. Underperforming stores are likely to be closed, consolidated or relocated. Choosing to shop at the West Dundee Target Store instead of at the Target in Hoffman Estates or Algonquin can help the West Dundee store to meet its daily sales goals and keep this store location viable.

Shopping local also generates local sales tax dollars paid to the Village of West Dundee. These sales tax dollars are used to help defer the cost of providing municipal services throughout the community. Sales tax dollars are provided to other communities when residents shop outside Village limits.

To help promote patronage of local businesses, the Village maintains an [online business directory](#). View the directory online to see the variety of retailers, restaurants and service businesses available. **Please shop and dine local whenever possible and especially when making your holiday purchases this season.**



ANNUAL LIONS CLUB CHRISTMAS TREE SALE

Come over to Grafelman Park to purchase your **Christmas tree, wreaths** and **garland** from the Dundee Lions Club.

Sales begin "Black Friday", November 23, from 10 am - 6 pm. Regular hours are:

Thursday & Friday from 6 pm - 8 pm
Saturday & Sunday from 10 am - 6 pm

Dundee Lions will collect non-perishable food items and diapers for the FISH Pantry, and also eyeglasses, cell phones and battery chargers, hearing aids and old keys for recycling.



CHRISTMAS TREE RECYCLING

Start the New Year off right by recycling your Christmas tree with the Dundee Township Highway Commission.

Bring your tree (all decorations removed) to the Township Garage at 1900 Sleepy Hollow Rd (at Rte 72) until January 15.

Watch for signs in the area, or call Highway Commissioner Larry Braasch at 847-426-0898 for more information.

FREE CHRISTMAS TREE COLLECTION

FREE Christmas tree collections are scheduled for SATURDAY, **January 5** & FRIDAY, **January 11**, along with regular refuse collection within the Village.

Trees need to be stripped of all decorations and placed at the curb with the cut end facing the street. Trees do not have to be cut up, bundled or placed in yard waste bags. **Trees in plastic bags or wrapped in plastic will not be accepted.** In addition, trees or greenery covered with artificial snow can not be accepted.

Garlands and wreaths must be disassembled. The organic portion should be placed in a yard waste bag while the rest is discarded as refuse. If you live in a building with more than three units, contact your building owner or refuse hauler regarding Christmas tree disposal, or recycle it (see above).

ICE SKATING

Take a break from the holiday stress to enjoy ice skating with family and friends this winter.

Prairie Meadow Park, located on Village Quarter Road (south of Target), is open from sunrise to 10:00 pm for outdoor ice skating. Washrooms are available.

Leaf's Ice Centre on Wesemann Drive off of Route 72 (west of Randall Rd) offers indoor skating. Visit www.leafsicecentre.com or call 847-844-8700 for hours of Public Skating, Active Adult Skating, Teen Nights and more! Admission is \$7 and skate rental is \$3.

Grab your skates, we'll see you there!

Looking for a great HOLIDAY GIFT idea?

A personalized granite paving brick installed in Grafelman Park or along the Riverwalk make a long-lasting and thoughtful gift for the holidays, or any time of year, to honor or memorialize an individual, family or group.

The cost is \$50 per brick for spring installation and personalized gift certificates are available. Stop by Village Hall or [download the Gift Selections Form from www.wdundee.org](#) today!

For more information, call Village Hall at 847-551-3800 between 8:00 am & 4:30 pm, Monday thru Friday.



SNOW REMOVAL OBLIGATIONS

Removal of snow and ice from Village streets is one the primary activities of the Public Works crews during the winter months.

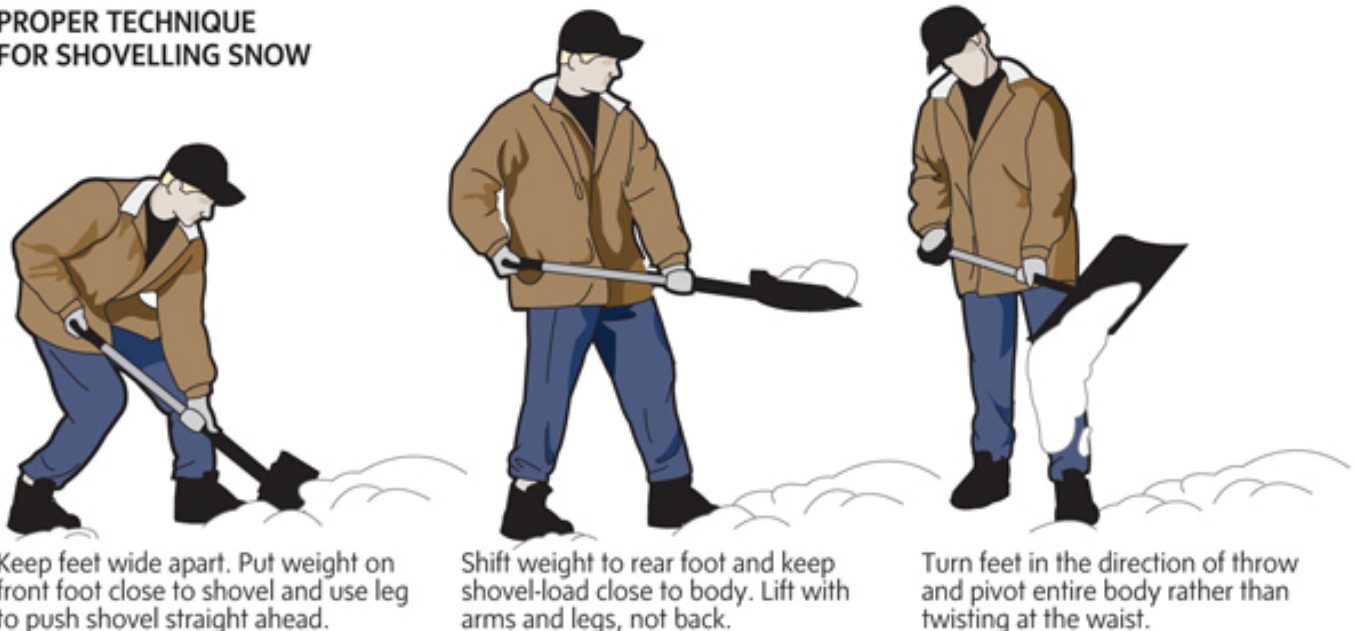
Heavily traveled streets are the Village's top priority and are cleaned of snow and ice first. Once the main streets have been cleared, crews begin removal from secondary collector streets, cul de sacs, dead end streets and parking lots.

Overnight permit holders for the downtown parking lots are reminded to park in the designated areas when snowfall is expected or in progress. For the north lot, park adjacent to the dumpster enclosure at the west end of the lot. For the south lot, park along the white fence. After the parking lot has been cleared, please move your vehicle to the cleared area so the remaining portion can be cleared.

Removal of snow and ice from sidewalks and private property is the responsibility of the property owner. Please help us to ensure safe travel for both pedestrians and vehicles throughout the Village by doing your part:

- Please clear snow from around the hydrants near your residence to allow emergency crews quick access in case of fire.
- Keep public and private sidewalks and corners clear of ice and snow for everyone's safety, including that of school-age children who walk daily to their bus stop.
- Do not stockpile snow at street intersections. This can create a visual obstruction that places everyone at risk.
- Please do not deposit or blow snow or ice onto Village streets.
- Please help neighbors who are unable to clear snow from sidewalks. Everyone benefits.
- When snowfall exceeds two inches in accumulation, all street parking is prohibited.

PROPER TECHNIQUE FOR SHOVELLING SNOW



Keep feet wide apart. Put weight on front foot close to shovel and use leg to push shovel straight ahead.

Shift weight to rear foot and keep shovel-load close to body. Lift with arms and legs, not back.

Turn feet in the direction of throw and pivot entire body rather than twisting at the waist.

WINTER PARKING BAN IN EFFECT

On November 1st, the winter street parking ban goes into effect, which prohibits parking on Village streets **between the hours of 2 am and 6 am**.

The purpose of the winter street parking ban is to ensure that in the event of overnight snowfall, the roads are unobstructed and can be completely cleared by the Public Works Department prior to the morning rush.

However, if you have short-term guests or your vehicle cannot be moved, permission *may* be granted for temporary overnight street parking. Call the Village's emergency dispatch center, **QuadCom, at 847-428-8784** with the vehicle's location, make, model and license plate number to request overnight street parking.

Please be aware, however, that in the event of two or more inches of snowfall, the vehicle may have to be moved at your expense and/or ticketed if it will inhibit snow removal operations.

The parking ban will remain in effect **until April 1, 2013**.



MAILBOX REPAIR & REPLACEMENT GUIDELINES

In the unfortunate event that a mailbox is damaged due to snow removal or other Village operations, the below guidelines shall apply:

- A properly installed mailbox damaged during Village operations will be repaired or replaced at a maximum cost of \$75.
- A temporary mailbox shall be provided pending repair and/or replacement, if eligible.



- Damage to mailboxes as a result of events beyond Village's control shall not be eligible for replacement.

The Village of West Dundee's Mailbox Replacement Policy can be viewed at www.wdundee.org.

DRIVEWAY APPROACH SNOW REMOVAL

The Village of West Dundee offers driveway approach snow removal to senior and disabled residents.

Snow removal is limited to the driveway approach from the public sidewalk to the curb, for snowfall events of 2" or more.

Snow removal is performed at the conclusion of the Village's snow removal obligations for all streets, parking lots, etc.

The cost for this service is \$15 for each removal. Participants are billed monthly, with payment due upon receipt of an invoice from the Village.

To sign up for the driveway approach snow removal program, please stop by or call Village Hall at 847-551-3800 to request an application or download the form from the Village's website, www.wdundee.org.

PREVENT PIPES FROM FREEZING THIS WINTER

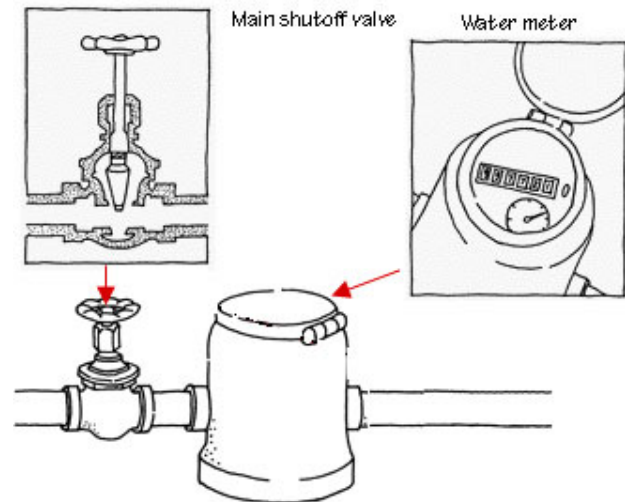
Every winter, many homeowners face the expense and inconvenience of frozen water pipes. By taking a few simple precautions this can be avoided.

- Wrap exposed pipes, especially in a basement or crawl space, with insulation or heat tape.
- Eliminate drafts and flow of cool air around water pipes in your basement or crawl space.
- Locate the main water shutoff valve in your home (usually near your water meter) and make sure everyone in the home knows how to operate it. Tag the valve and/or paint it a bright color to make it easy to find in the event of a burst pipe.
- If you go on vacation, leave the heat set to at least 55 degrees.
- Open vanity or cabinet doors to allow warm air to circulate.
- During extreme cold, run a thin stream of water in at least one faucet in your home.

Should pipes freeze and you know where it occurred, you can thaw pipes yourself using a hair dryer with a low heat setting. **DO NOT USE AN OPEN FLAME.** Wave the warm air of the hair dryer back and forth along the pipe. **DO NOT** heat only one spot on the pipe, as this can cause it to burst.

If you don't have a hair dryer, you can wrap the frozen section with rags or towels and pour hot water over them. This is messy but it works.

Be careful when heating the pipe because it may already be broken and not leaking due to frozen water, and could come gushing out when thawed.



THANK YOU, VOLUNTEERS!

The Village of West Dundee would like to express our sincere thanks to the many volunteers who have given their time in service to their community this year.

Several dedicated volunteers got their hands dirty planting donated plants, pulling weeds and more, during our Earth Day, Every Day community gardening days in April, June and August. Work was undertaken along the Riverwalk, downtown and at Public Safety Center #2 to the benefit of the entire community.

Thanks to the army of volunteers that signed up to assist at this year's Heritage Fest, we were able to pull off another spectacular festival this year. Thank you to all who participated and all who came out to make this one of the best Heritage Fests in the event's 15 year history!

Special thanks to our dedicated committee members for both Heritage Fest and Dickens in Dundee. These events would not be possible without your participation and leadership. You all know who you are - Thank you!

DON'T LET A CROOK RUIN YOUR HOLIDAYS

Protect your home, yourself and your belongings from theft this holiday season, and year-round, by taking a few extra precautions:

- If you are away, have someone watch your house to shovel snow and pick-up mail and newspapers. Program interior and exterior lights to go on and off by an automatic timer. Turn on the outside lights to your residence at night to deter criminals from using the cover of darkness to their advantage.
- When shopping, avoid carrying large amounts of cash and don't park in unlit or secluded areas. Teach your children to go to a store clerk or security guard for help if you become separated. Children should never walk into a parking lot alone.
- Beware of con games and fraud. When someone asks you for a donation, ask to see identification. Donate only to charities you know, and never give your credit card number over the phone.
- Don't leave any valuables, such as a GPS unit, MP3 player, purses, wallets or money inside your vehicle. Lock your car, roll up all the windows and set the alarm system or anti-theft device.
- Park your vehicle inside your garage instead of on your driveway or street.



FALSE ALARM FEES

While the Village encourages the use of home security and fire monitoring systems, there is a considerable cost to the Village when responding to frequent false alarms. Frequent false alarms also deplete Village resources that may be needed by someone who has an actual emergency.

Village Ordinance 5-5-10 regulates the fines associated with false alarms. Properly maintaining your system will help you avoid costly fees and will also make sure that we have the resources when they are needed. Below is a breakdown of the associated fines. Billing for a twelve (12) month period shall be renewed January 1, of each year.

Number of False Alarms:	0-3	No Charge
	4-5	\$100.00 per incident
	6 or more	\$200.00 per incident

HOUSE WATCH PROGRAM



West Dundee residents who will be out of town for an extended period of time should consider registering for the House Watch program.

While you are away, a police officer will check on your house at least once per night and monitor for suspicious activity.

Call the Police Department at 847-551-3810 for more information.

THE ILLINOIS YELLOW DOT PROGRAM

The Illinois Yellow Dot Program is a statewide initiative designed to **provide medical information about vehicle drivers and passengers to assist first responders in of event of a serious crash**. Access to this vital information can mean the difference between life or death.

The Yellow Dot program consists of:

- (1) A photograph clearly identifying the program participant, which is placed in the designated spot on the Yellow Dot Medical Card;
- (2) Personal information, which includes participant's name, emergency contact, personal physician, medical conditions, recent surgeries, allergies and current medications. Additional medical cards should be completed for other frequent drivers or passengers. Place the completed forms in your glove compartment;
- (3) Yellow Dot Decal is placed on the rear facing window on the driver's side. This alerts first responders of vital medical information that can be found in the glove compartment.



You can apply for the Yellow Dot program at Carpentersville Village Hall, 1200 LW Besinger Drive, Carpentersville, IL 60110, attn. Marla Shepley or Fire Chief John Schuldt.

RECYCLE HOLIDAY LIGHTS

In addition to recycling of electronics and household batteries, you may now recycle your unwanted holiday lights at the West Dundee Public Works facility at 900 Angle Tarn.

Drop-off hours are Monday through Friday from 8 am-3 pm.

For a complete list of accepted items, please visit the [recycling page at www.wdundee.org](http://www.wdundee.org/recycling).

ENERGY IMPACT ILLINOIS

Homeowners in West Dundee are eligible for the [Energy Impact Illinois](#) program, funded through a US Dept of Energy grant, which helps pay for property upgrades to cut heating and cooling costs by improving energy efficiency.

Property owners pay \$99 for an energy assessment by certified contractors to identify energy saving upgrades. Energy Impact Illinois will then pay a portion of the cost for the upgrades - as much as \$1,750. Homeowners can save, on average, \$500 per year on their energy bills after making energy efficiency upgrades to their home through this program.

For more information, call Megan Butler at 630-750-7726 or email meg@energyimpactillinois.org.



SPEAK OUT ...provides another way for you to communicate with Village Officials.

Written comments can be mailed or placed in the drop box outside Village Hall, 102 S. Second Street, or emailed to villagehall@wdundee.org. Please be sure to include your name, address and e-mail address. Attach additional sheets of paper if needed.
