



Ned Lamont
Governor

Department of Emergency Services and Public Protection

Division of Emergency Management and Homeland Security

James C. Rovella, Commissioner
Regina Y. Rush-Kittle, Deputy Commissioner
William J. Hackett, Director



SEVERE WEATHER UPDATE FROM DESPP / DEMHS AT 12:15 PM ON AUGUST 27TH IMPACTS EXPECTED FOR CONNECTICUT SPC FORECAST FOR TODAY NAM-HRES RADAR AT 3:00 PM

STATUS OF THE STATE EMERGENCY OPERATIONS CENTER: **ACTIVATED**

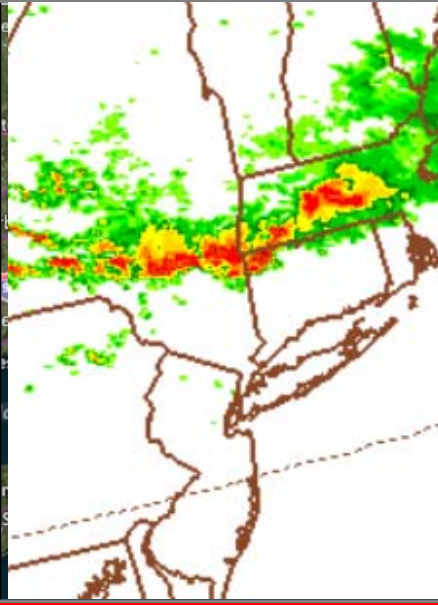
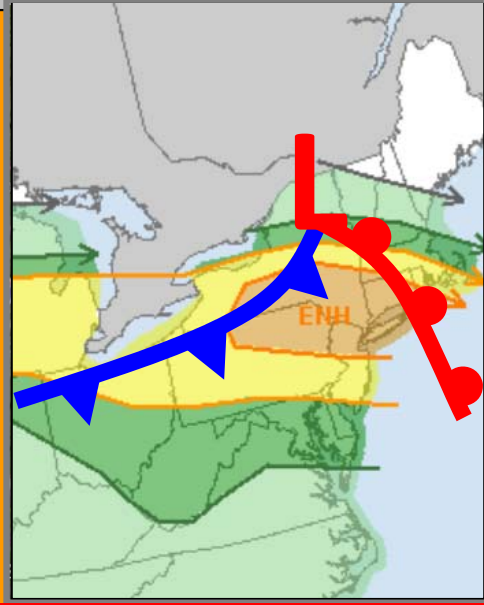
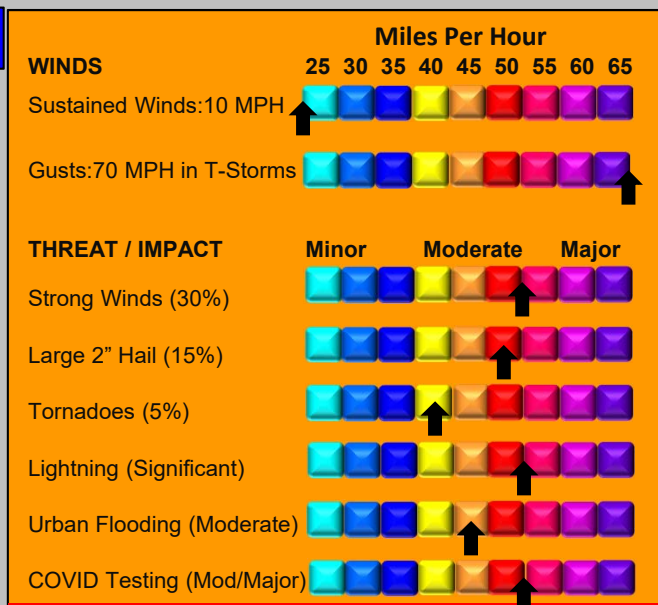
ENHANCED THREAT OF SEVERE THUNDERSTORMS OVER CONNECTICUT THIS AFTERNOON...TOWNS NEED TO MONITOR ANY THUNDERSTORMS OR SUPERCELLS MOVING TOWARDS THEIR AREA VERY CLOSELY...

The NOAA Storm Prediction Center (SPC) has placed most of Connecticut in the Enhanced Risk Category for severe thunderstorms this afternoon. Severe thunderstorm and/or tornado watches may be issued early this afternoon.

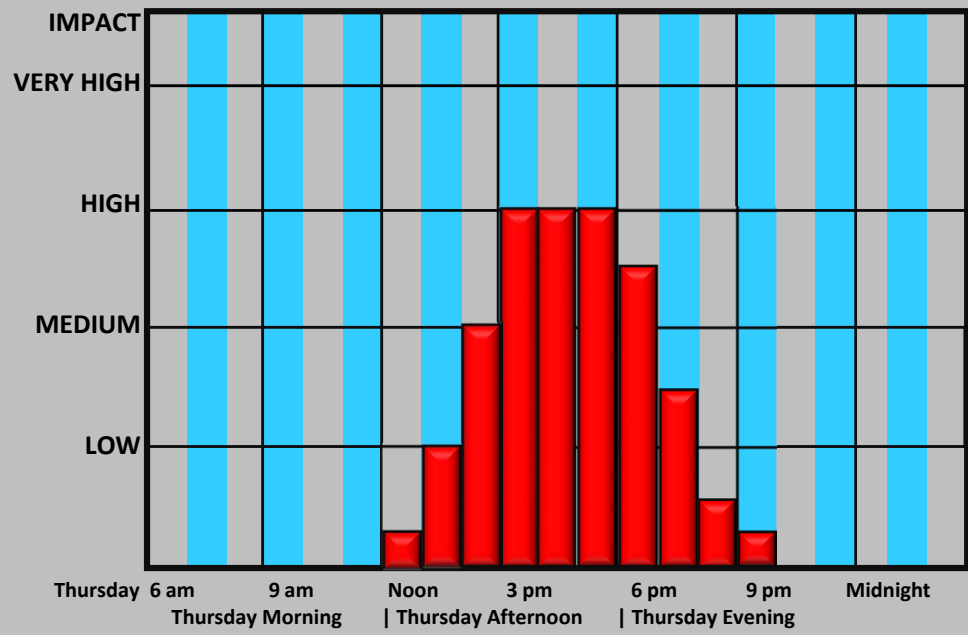
At noon a warm front stretched from the NW Hills to the southeast coast. Temperatures currently range from the mid 60's in northeastern CT to the upper 70's in southwestern CT. Skies have partially cleared in southwestern CT allowing temperatures to rise more quickly. Moist air, strong upper level winds along with significant low level wind shear are moving into western CT. Regional radar shows a line of strong thunderstorms forming in upstate New York.

This Afternoon: The line of strong thunderstorms currently in upstate New York is expected to intensify and move quickly to the southeast at 60 – 80 MPH and enter northern Connecticut between 2:00 – 3:00 PM. The NAM-HRES model is forecasting that a line of thunderstorms will enter the state from the north around 3:00 PM (see far right). The most likely time frame for severe thunderstorms is from 2:00 PM until 8:00 PM. The most dangerous storms are expected to be a few individual supercells that form either along the line or in the partly sunny conditions to the west of the warm front over western and southwestern CT. The SPC is forecasting that any thunderstorms that develop (especially supercells) will have a 30% chance of containing strong winds (60 – 70 MPH), a 15% chance for large hail (2" in diameter) and a 5% chance of containing a tornado. Other hazards will likely include moderate urban flooding and dangerous lightning.

The overall impact of these thunderstorms is expected to be moderate however there could be some more significant impacts in any towns in the path of a supercell. Additional updates may be sent out when significant severe weather is reported.



THREAT TIMING FOR IMPACTS



CURRENT WATCHES AND WARNINGS



This product is a public service of the Department of Emergency Services and Public Protection (DESPP), and is intended for informational purposes only. DESPP assumes no liability for the use or distribution of this product or any actions resulting from this product.