

Fairfield Beach Neighborhood Meeting

Public Works Yard

JANUARY 9, 2018

<http://www.fairfieldct.org/pwyard>

INTRODUCTIONS

First Selectman Michael Tetreau

Joseph Michelangelo, Public Works Director

Scott Bartlett, Public Works Superintendent

Brian Carey, Conservation Director

REVIEW

- The most recent regular public meeting was held on 10/10/17.
- Meetings with core group of residents held 9/29/17 and 12/5/17 to review Berm & Capping Plan
- Meeting with Peter Miniutti regarding Landscape Berm design held 9/12/17.

REMEDIATION

- Removal of PCB impacted soil was completed 10/11/17.
- Final Remedial Action Report Completed 12/5/17 and submitted to CT DEEP.
- All work was completed within the allocated funding of \$289,146.

LANDSCAPE BERM / CAPPING PERMITTING

- Original engineered landfill capping and berm grading plans completed 6/21/17; was withdrawn from P&Z due to concerns.
- Following input received via meetings and correspondences with Core Group & CFE, revised plans submitted 12/21/17.
- Plans also referred to CT DEEP Office of Long Island Sound, Stormwater Unit, and CT DEEP WEED.
- Scheduled to be on P&Z agenda on 1/30/18.

IMPLEMENTATION

- Construct Grading for Landscape Berm and Landfill Capping upon obtaining of all permits – begin 3/15/18.
- Seeding and plantings complete by 6/15/18.
- Materials utilized in the berm and capping will meet sampling protocol conforming to CT DEEP standards.

LEGAL

- The Town is in legal action versus Julian utilizing outside legal council. All available options are being pursued.
- The Town is seeking to recoup all expenses and damages for the contamination and for the amount of material on site.

5 YEAR PLAN – INITIAL ISSUES

- This presentation identifies initial issues to be considered.
- Will work with Core Group of neighborhood representatives to develop 5 Year Plan.
- Input from these meetings also important.
- Other Town Departments will be involved.

5 YEAR PLAN – INITIAL ISSUES

Operations on Richard White Way

Public Works

Water Pollution Control (Sewer Plant)

Woody Debris (Harvest New England)

Transfer Station

Fire Training Grounds

School Bus Yard

Conservation Dept. Garage

Animal Control

5 YEAR PLAN – INITIAL ISSUES

Public Works Operations –

- Facility is needed to maintain road & sidewalk network, Snow & Ice Operations, Town Buildings & Grounds, Vehicle Maintenance & Fueling, Parks, Beaches, Marina, etc.
- All Town physical services (except BOE) emanate out of Richard White Way complex.

5 YEAR PLAN – INITIAL ISSUES

Existing pile –

- Construct Landscape Berm
 - Obtain approvals
 - Construct Berm
 - Substantially complete 6/15/18
- Seek markets to remove existing material that is not utilized in berm

5 YEAR PLAN – INITIAL ISSUES

Material we generate

- Sort, crush, reuse, don't allow accumulating
- Temporarily performing in main yard – outside of aggregate pile gates
- Will allow us to gage size & scale of operations, man-hours necessary, and cost of operations
- Unacceptable spoils – Truck out sweepings, catch basin cleanings, etc. as we generate – don't allow to accumulate.

5 YEAR PLAN – INITIAL ISSUES

- Will not be contracted out to vendor in total
- Contractors may be hired for portions of the work
- Equipment may need to be rented
- No outside material (non-Town of Fairfield) accepted
- Operations will be moved back into the aggregate area after completion of berm and legal proceedings

5 YEAR PLAN – INITIAL ISSUES

Water Pollution Control Facility (Sewer Plant) – serves 16,500 Fairfield Residences & Businesses

- An Upgrade is in the planning process
- Upgrade will require renovations/ additions of components – pumps, tanks, second UV channel, biosolids dewatering & composting, carbon filters.
- No major expansion of capacity.
- Seek Town funding and outside grants to enable the Upgrade design & construction process to begin

5 YEAR PLAN – INITIAL ISSUES

Harvest New England – Provides disposal for woody debris for Town residents, contractors and DPW. Used for WPCF composting.

- Controlling fire hazards, pile sizes.
- Landscape Berm extends along south.
- Limiting area to be used in operations.

5 YEAR PLAN – INITIAL ISSUES

Transfer Station – Solid Waste & Recycling

- Serves as a drop off location for garbage and recycling before it is hauled to other locations.
- Building is 40 years old – maintenance items occurring (odor control system, roof, compactors, tipping floor).
- Reconfigure recycling arrangement in front lot.

5 YEAR PLAN – INITIAL ISSUES

Fire Training –

- Screening will be provided.
- Operations have been altered over previous use.
- Much of the training is indoor classroom. Usage is similar to 2013.
- Maintained like a Firehouse – “clean & crisp”
- Plans originally called for maintenance garage.

5 YEAR PLAN – INITIAL ISSUES

Other Town Users on Richard White Way:

- School Buses – busses, employee parking, and fueling
- Conservation Garage – Cleaning up excess equipment and supplies in storage yard to the rear of the building
- Animal Shelter – added small outdoor walking area

5 YEAR PLAN – INITIAL ISSUES

Flood Control Berm

- Elevated Berm (Dike) will be on the periphery to the outside of the existing wood barrier currently in place.
- Richard White Way will be raised east of Sewer Plant.
- Screening to be planted around Fire Training and WPCF to help shield operation from residences.
- Construction to begin this year following DEEP / P&Z approvals.

5 YEAR PLAN – INITIAL ISSUES

Additional thoughts on back side of the berm

- Extend Berm Concept along the west (Facing Salt Meadow/ Old Dam Road)
- Extend Concept along the east (facing Longdean)
- Walking Trail – Promote public use
 - Connectivity to Richard White Way
 - Connectivity to Mona Terrace, Old Dam Rd
- Will need funding approval for the above

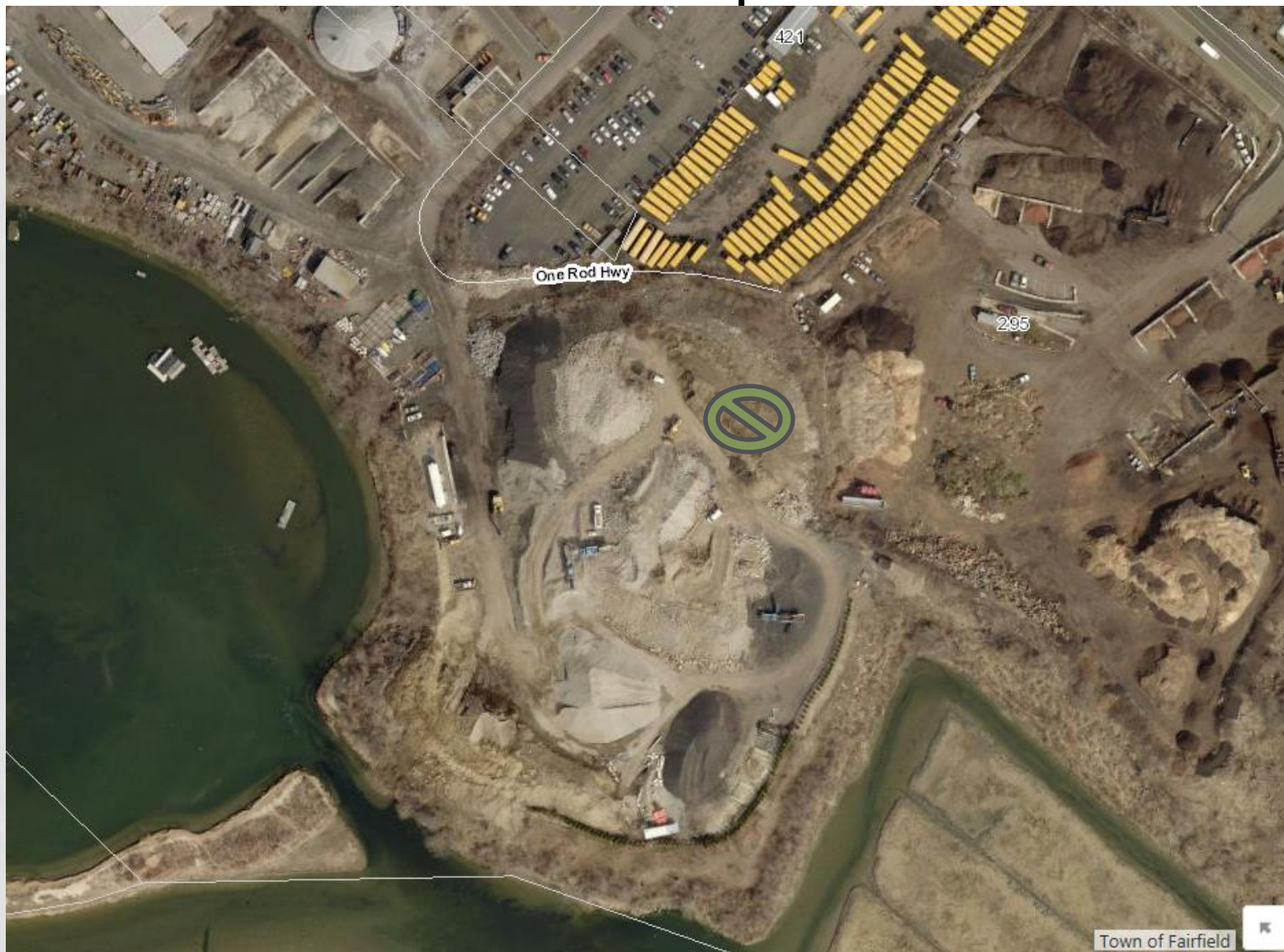
FOLLOW UP

- Meet with Neighborhood Leaders to address any Issues with Design Plans.
- Work with Neighbors to develop 5-yr plan
- Continue to provide bi-weekly Status Updates to Neighbors.
- Regular Scheduled Bi-monthly Meetings

Thank you

<http://www.fairfieldct.org/pwyard>

Site Map



Site Map



2015 Aerial - GBRC Website

Site Map



2015 Aerial – GBRC Website

Site Map

