



A Deeper Dive into the Transfer Station and Recycling Center

More Information about Community Issues

Dear Fairfielders,

Let's talk trash.

Trash in the Town of Fairfield is handled through the **Transfer Station and Recycling Center**, which offers not only Municipal Solid Waste (MSW) disposal for residents, but a wide array of recycling options and disposal for large items that can't be placed in regular household refuse. The area it occupies is easy to access, well-organized, clearly marked with directional signs, and free of debris. Fairfield is dedicated to sustainable management practices for waste disposal, something that impacts the planet and our Town. It's important that we understand where our rubbish goes when we throw it "away", and we'd also like to make you aware of some recent changes. Let's take a Deeper Dive into this important Town resource.

Who Oversees the Transfer Station?

Fairfield's Solid Waste and Recycling Commission (SWRC) oversees the Town's Department of Solid Waste and Recycling and the Town Transfer Station, where private haulers and Town residents bring garbage and recyclables. Seven Commission members serve four-year terms, after being appointed by the Board of Selectmen with Representative Town Meeting approval. They are responsible for adopting the Solid Waste and Recycling Regulations. The Solid Waste and Recycling Department, part of the Department of Public Works (DPW), oversees Transfer Station operations on a daily basis.

Changes Effective July 1, 2024

The SWRC held a special meeting open to the public on April 15 and voted to increase Transfer Station fees for haulers and homeowners. A public hearing was held on April 29. Transfer Station fees have not increased since July 2014 for haulers, and July 2015 for homeowners. The Transfer Station's operating expenses have increased steadily over this time period, and beginning July 1, 2024, Bridgeport-based WinWaste (where Fairfield trash is transferred and incinerated) has increased the "tip fees" (the fee to tip the trash onto the scale) by about 22 percent. The increase from WinWaste will result in approximately \$475,000 in increased expenses to Fairfield for Fiscal Year 7/1/24 to 6/30/25.

Accordingly, the SWRC voted to increase fees, effective July 1, 2024. Standard fees for residents with 1-125 lbs. of Municipal Solid Waste (MSW), or regular household refuse, will increase from \$6 to \$7. Hauler tipping fees will increase as well, which may be passed along to homeowners who pay for home pickup. For the average resident, this increase in hauler fees should amount to an increase of \$2-3/month.

To streamline operations, there will no longer be cash payments permitted at the Transfer Station Scale House. You may pay by credit/debit card, mobile payment, or check.

How Much Do We Throw Away? A Lot of Rubbish!

We estimate that the Transfer Station handles roughly 20,000 tons of residential garbage each year, from approximately 20,000 households in Fairfield. That equates to one ton of garbage each year, per home. Before you consign something to the garbage heap, take a minute to become familiar with our Recycling Center services. You might be able to recycle it instead.

The SWRC works to be sure that Fairfield stays in conformance with State laws, and oversees compliance with mandated programs for collection, disposal and recycling of

garbage, but waste disposal and recycling is a responsibility that all of us share. I encourage you to read this newsletter before you toss your trash.

Less garbage in, less garbage out!

Bill Gerber
First Selectman



Begin at the Beginning

As the King very wisely said in Alice in Wonderland, it's best to "begin at the beginning, and go on till you come to the end, and then stop." The beginning of the Transfer Station is the Scale House at 898 Richard White Way, where you declare the items you brought for disposal, and pay the appropriate fees. You will receive a receipt from one of the Scale House attendants before proceeding into the Transfer Station and Recycling Center. Most recycling is at no charge.

The Transfer Station operates from 7:00 am to 3:00 pm, Monday through Friday; from 7:00 am to 12:00 pm on Saturdays; and is closed on Sundays. The Transfer Station is closed

New Years Day, Memorial Day, Fourth of July, Labor Day, Thanksgiving Day, and Christmas Day.



Lisa Gndt, Lead Scale House Operator

Lisa Gndt is the Transfer Station's Lead Scale House Operator, which is a long way of saying that she manages the Transfer Station and oversees its myriad bins, dumpsters, sections, and services. She has an office in the Department of Public Works building but can be most often found on Transfer Station grounds, greeting homeowners, solving problems, and answering questions. Be sure to say hello when you see her.



Safety and Regulations Monitoring

Thirteen cameras are used to monitor the Transfer Station and Recycling Center to ensure safety as well as adherence to rules and regulations for waste disposal and recycling.



Municipal Solid Waste (MSW)

There are three ways to dispose of your household waste in Fairfield.

1. You can hire a **private hauler**: there's a list of approved licensed residential or commercial hauling companies on [this website page](#).
2. Residents with a **valid sticker** can bring their trash and recycling to the [Transfer Station](#), for a fee.
3. If you do not have a sticker, residents can buy a **temporary pass** at the Transfer Station and Recycling Center for \$5, which allows you access to both facilities for five consecutive days. With the temporary pass, you still need to pay any applicable fees.

Residents bring their household refuse to the same building as the licensed haulers, but residents' MSW is placed in a compactor, and from there, it's pushed into a walking floor trailer. In the photos below, haulers are tipping their loads directly into the compactor hopper or on the tip floor. The trailers in turn bring trash to the incinerator operated by Bridgeport WinWaste dba Wheelabrator Technologies.

Fairfield residents can bring **yard waste** to [WeCare Denali](#). Under 500 pounds of yard waste is free for residents; there is a charge for over 500 pounds.



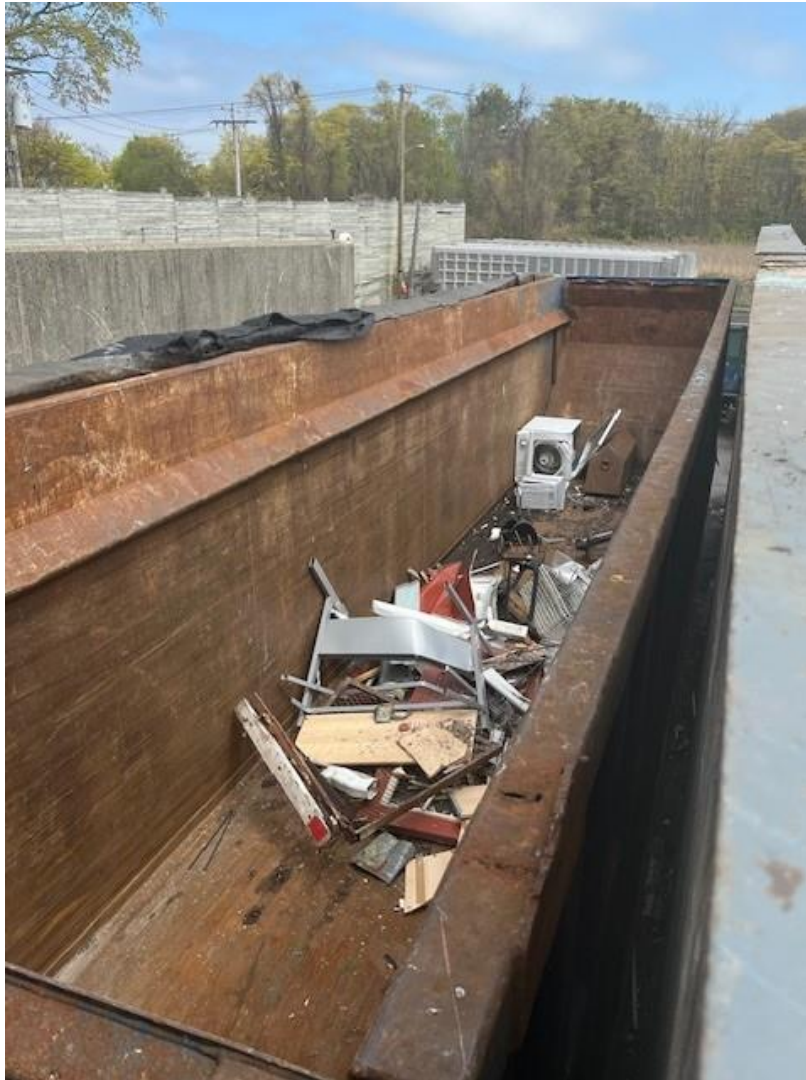


Other Kinds of Trash: Bulky Waste, White Goods and Refrigerated White Goods

"Bulky Waste" is accepted at the Transfer Station for disposal. **Bulky Waste** includes construction material and demolition debris that is primarily noncombustible. Renovating your kitchen? Your bulky waste may include sheet rock, tile, bricks, or cement—accepted for a fee.

Need to dispose of a refrigerator or an air conditioner? Refrigerators, air conditioners and dehumidifiers contain freon or a similar R2 gas and can be safely disposed of at the Transfer Station for a fee. These are **Refrigerated White Goods**. Please remove doors from all refrigerators for public safety before bringing them.

Other large appliances, including large water heaters, are taken for a fee, and are listed as **White Goods**.



Recycling

Fairfield participates in single stream recycling, created to make recycling easy! Most recyclable items can be placed into a single recycling bin, mixing paper, plastic, metal and glass all in one place. When the recyclables arrive at their destination, they're sorted by various commodities. For this reason, it's important to pay attention to what you put in the single stream recycling bins. Here's what you can include, based on [RecycleCT](#) guidelines:

- Newspapers, junk mail, catalogs, magazines, office paper, mixed paper, paperboard, paper egg cartons, telephone and paperback books. No shredded paper.
- All paperboard boxes (cereal, rice, pasta, etc) including corrugated cardboard, clean pizza boxes with liner removed. **Please flatten.**

- Milk and juice cartons with caps off and straws removed. Please rinse first.
- Metal food and beverage containers (up to number 10 size). Food-related aerosol cans. Please rinse first.
- Glass food and beverage containers. Please rinse first.
- Food-grade plastics, plastic bottles and food tubs and containers (no black plastic or Styrofoam). Laundry detergent and shampoo/conditioner bottles. Nothing over 3-gallon size. Please rinse first.
- Aluminum cans. Please rinse first.
- Aluminum foil and foil containers.

Please note: Glass is considered a single stream recyclable in Connecticut, but we encourage residents to keep it separate and bring it to the Transfer Station and Recycling Center when you can. Glass is fragile and can break at any point after collection. When glass breaks, it can contaminate the entire load of recyclables. Broken glass is also hard on processing equipment. The Town is currently in a glass pilot program where we are not charged for hauling and disposal.

With Single Stream, do not include PLASTIC BAGS, hard cover books, food waste, paper plates, dishes, motor oil or hazardous waste containers, batteries, or CD Cases. PLASTIC BAGS are very important NOT to include. That's why they have a separate sign on the bins.

Please do not include things that tangle: things like hoses, ropes, cords, wires, ribbons and bows, etc. Thank you!



Cardboard

Large, corrugated cardboard boxes can go in the open top dumpster. Please flatten them first.



Other Kinds of Recycling

Food Waste:

Fairfield residents with a valid Transfer Station sticker can drop off their food waste and scraps at no charge. Food waste can be loose, or placed in BPI-certified compostable bags only, which can be purchased at local grocery stores or online. Composting your food scraps will divert roughly 20% of your household waste into useful, soil-enriching compost!

You can bring: fruit and vegetable scraps and peels, coffee grounds and filters, tea bags (please remove the staples and stickers!), eggshells, nuts and shells, meat and poultry (including bones), dairy products, and bread, pasta and grains.

Do NOT bring: liquids, plastic or paper food containers or drink cups, food packaging or labels.



Textiles

Many people don't realize that you can recycle clothing at the Transfer Station. Did you know that in the U.S., 50 billion garments are put into landfills every year? 45% of the clothing we discard can be used as second-hand clothing, and another 30% can be made into industrial rags.



Electronic Devices

Typical items that may be recycled include cell phones, remote controls, keyboards, digital cameras, televisions, microwave ovens, copy machines, scanners, computers, CD and DVD players, light bulbs and batteries. [Click here for a complete list of acceptable items.](#)

There is no charge for electronics recycling for Fairfield residents.



Metal Objects

DPW Director John Marsilio stands in front of metal items that have been dropped off for disposal. The Transfer Station accepts used or discarded items which consist predominantly of ferrous metals, aluminum, brass, copper, lead, chromium, tin, nickel or alloys thereof.



Glass

The kind of glass accepted here is food grade containers—bottles and jars—not broken mirrors or drinking glasses.



Propane Tanks

Propane tanks and fire extinguishers may be recycled at the Transfer Station, for a fee.



Tires

Tires are accepted, with or without rims.

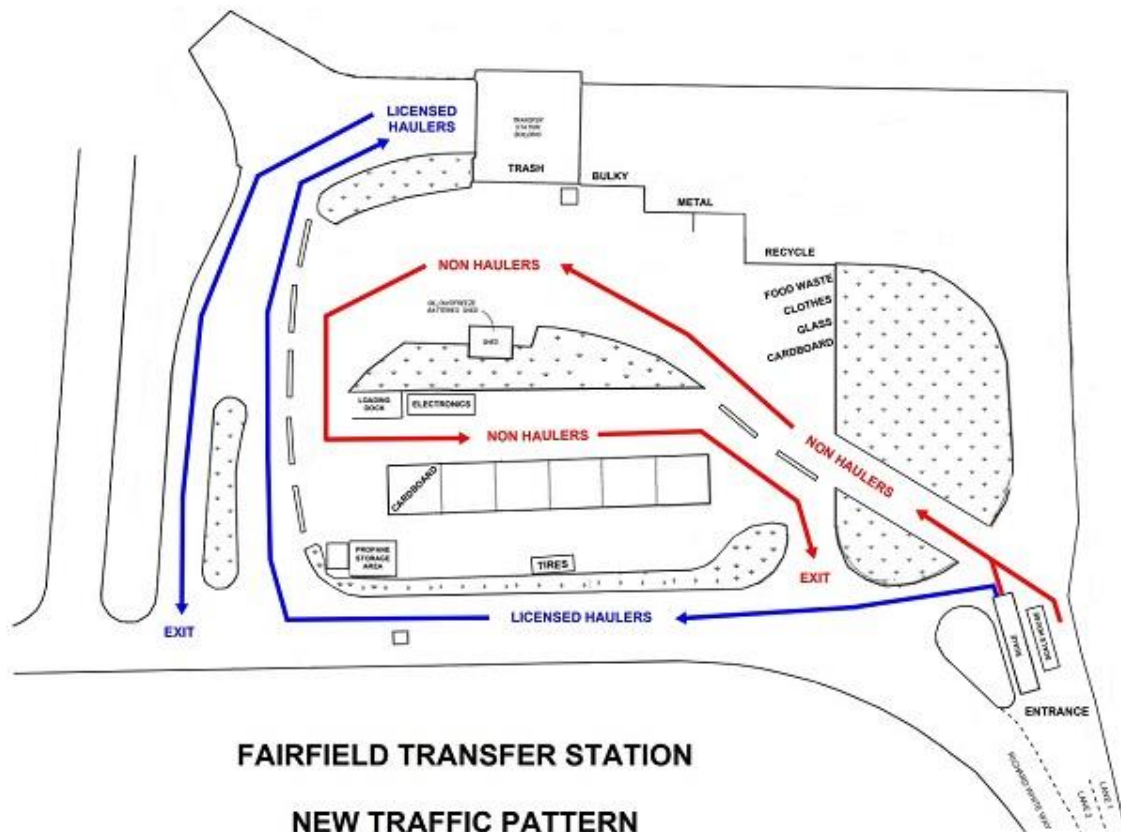


"The greatest threat to our planet is the belief that someone else will save it."-Robert Swan

Waste management is an important topic worldwide, and we want you to know that Fairfield is doing its part to reduce, reuse, and recycle for the health of the planet and the future of our Town.

If you want to read more about recycling, including information on hazardous materials, paint, yard waste, and more, the [Town website has more information](#). Fee information is included.

Problems or questions? Lisa Gndt is happy to speak with you. You can reach her at 203-256-3163, or you can email her at LGndt@Fairfieldct.org.



WHY YOU'RE RECEIVING THIS EMAIL:

As a resident, business owner, student, or individual interested in news about the Town of Fairfield, your name appears on an email list that belongs to the Town database. You might have requested to be on this list or added your name to another Town communication in the past.

This email arrives in your inbox every other Friday and is official news from Fairfield's First Selectman and the Town of Fairfield. If this email was forwarded to you and you want to receive official emails from your First Selectman, [click here](#). You can also unsubscribe from any newsletter you don't want to receive. See the link below where you can click unsubscribe.