
APPENDIX I

Concept Plans (Full-size)

AMENITY LIST

EXISTING AMENITIES

- 1. Playground
- 2. Little league field
- 3. Pavilion

PROPOSED AMENITIES

- 1. Multi-use court games area (35'x75')
- 2. Pedestrian loop path around park
- 3. New on-street permeable parking area
- 4. New fencing around park perimeter
- 5. Bike amenity / bike rack
- 6. Native plantings / pollinator pathway
- 7. Rain garden

LEGEND

- Project area
- Improve accessibility
- Bike friendly
- Multi-generation activity
- Green infrastructure (Storm water management)
- Pollinator friendly



AMENITY LIST

- EXISTING AMENITIES
1. Softball field
 2. Batting cage
 3. Restroom building
 4. Off-street parking area
- PROPOSED AMENITIES
1. Dog park
 2. Expanded parking area (100+ spaces)
 3. Picnic areas with covered pavilions
 4. Playground area
 5. Seasonal skating rink
 6. Bike amenity / bike rack
 7. Water bottle refill station
 8. ADA improvements

LEGEND

- Project area
- Improve accessibility
- Bike friendly
- Multi-generation activity
- Dog friendly
- Pollinator pathway
- Water bottle refill station



- AMENITY LIST
- EXISTING AMENITIES
- Tennis courts (qty 4)
 - Soccer field
 - Softball field
 - Playground area
 - Court games area
 - Loop / track around fields
- PROPOSED AMENITIES
- Pickleball courts (qty 4)
 - Field improvements to address drainage issues
 - Accessible drop-off area at field improvements to address erosion issues
 - Pavilion/shade structure at playground area
 - Court game re-surfacing
 - Improved picnic areas near playground
 - Restroom facility at tennis & pickleball area
 - Bike amenity / bike rack
 - Water bottle refill station
 - ADA improvements

LEGEND

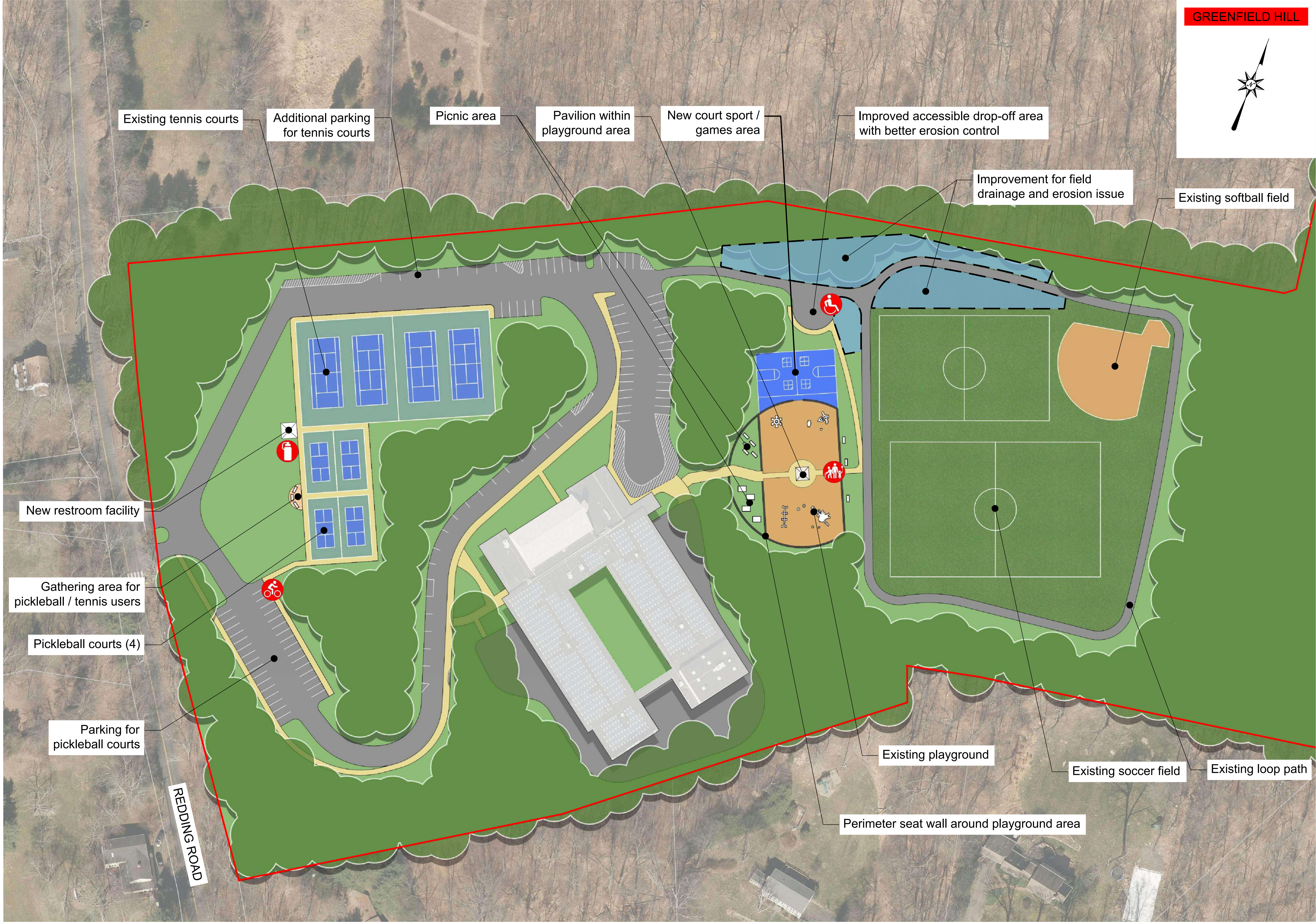
Project area

Improve accessibility

Bike friendly

Multi-generation activity

Water bottle refill station



AMENITY LIST

- EXISTING AMENITIES
- 1. Open space
- PROPOSED AMENITIES
- 1. Two (2) turf multi-use fields
 - 2. One (1) softball field
 - 3. Two (2) basketball courts
 - 4. New off-street permeable parking area (100+ spaces)
 - 5. Field drop-off zone
 - 6. Loop path (1/2 Mile)
 - 7. Picnic area
 - 8. Water bottle refill station
 - 9. Bike amenity / bike rack
 - 10. Rain garden

LEGEND

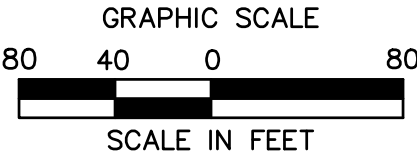
- Project area
- Improve accessibility
- Bike friendly
- Multi-generation activity
- Pollinator friendly
- Green infrastructure (Storm water management)
- Water bottle refill station



SOUTHPORT



WALTER FITZGERALD ALT. HS, 309 BARBERRY ROAD
CONCEPT PLAN



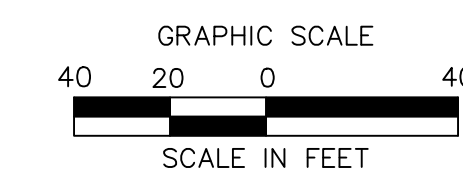
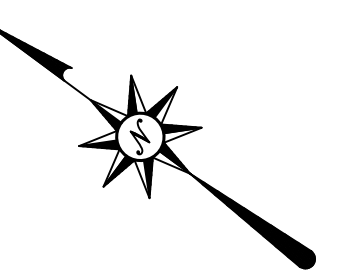
EXISTING AMENITIES

- ## PROPOSED AMENITIES

- ## LEGEND



BLACK ROCK



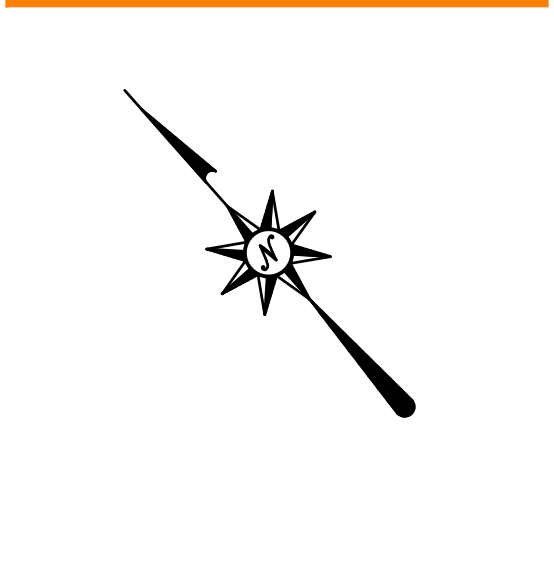
AMENITY LIST

- EXISTING AMENITIES
- 1. Playground
 - 2. Swimming beach
 - 3. Snack bar
 - 4. Skate park
 - 5. Off-street parking area
- PROPOSED AMENITIES
- 1. Re-configured parking and entry gate
 - 2. Improved pedestrian circulation between beach and park area with ADA improvements
 - 3. Food truck court area
 - 4. Re-imagined pedestrian connection between park and beach area
 - 5. Two dog parks dedicated for smaller and larger dogs
 - 6. Amphitheater for beach front concert events
 - 7. Expanded loop path within park area
 - 8. Splash pad
 - 9. Pollinator path with native plants
 - 10. Restroom facility for park
 - 11. Water bottle refill station

LEGEND

- Project area
- Improve accessibility
- Bike friendly
- Multi-generation activity
- Pollinator friendly
- Enhanced tree canopy
- Water bottle refill station
- Green infrastructure (Storm water management)





AMENITY LIST

- EXISTING AMENITIES
- 1. Swimming beach
 - 2. Concession / restroom building
 - 3. Splash pad (2022 replacement)
 - 4. Playground
 - 5. Pavilion and beach picnic area
 - 6. Open space trail access
 - 7. Off-street parking area

- PROPOSED AMENITIES
- 1. Re-stripe parking lot (100+ parking spaces)
 - 2. Storm water infiltration islands with new landscaping in parking lot
 - 3. Improved pedestrian access through parking lot to trail head
 - 4. Enhanced pedestrian entry and gate to beach area
 - 5. ADA improvements
 - 6. Dog park (1/2 acre)
 - 7. Enhanced park signage at road including new columns and special pavers
 - 8. Water bottle refill station

LEGEND

- Project area
- Improve accessibility
 - Bike friendly
 - Pollinator friendly
 - Dog friendly
 - Green infrastructure
 - Water bottle refill station



AMENITY LIST

- EXISTING AMENITIES
1.

Playground (replaced 2022)
2.

Multi-use lawn area
3.

Sand play area
- PROPOSED AMENITIES
1.

Pavilion
2.

Climbing structure (ages 5-12)
3.

Swings (ages 5-12)
4.

Gaga pit
5.

New pathway
6.

Playground surfacing for play & bike riding

LEGEND

- Project area
- Improve accessibility
- Bike friendly
- Multi-generation activity



AMENITY LIST

EXISTING AMENITIES

1. Soccer field
2. Bocce courts
3. Playgrounds

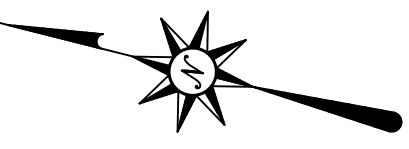
PROPOSED AMENITIES

1. Linear park/Fitness trail along old field marsh open space
2. Community gardens
3. Improved parking area at trail head
4. Pollinator walkway with native plantings
5. Two(2) pickleball courts
6. Bike amenity / bike rack
7. Water bottle refill station
8. ADA Improvements

LEGEND

- Project area
-  Improve accessibility
-  Bike friendly
-  Pollinator friendly
-  Multi-generation activity
-  Water bottle refill station

SHORE AREA



OLDFIELD SENIOR CENTER, 100 MONA TERRACE

CONCEPT PLAN

GRAPHIC SCALE
50 25 0 50
SCALE IN FEET

AMENITY LIST

- EXISTING AMENITIES
1.

Playground
2.

Baseball field
3.

Softball field
4.

Tennis courts (QTY. 2)
5.

Restroom building
6.

Off-street parking area
- PROPOSED AMENITIES
1.

Re-configured baseball field (include removal of softball field)
2.

New multi-use sports field
3.

Additional parking area along entry drive
4.

Re-configured main parking area
5.

Pedestrian loop path throughout site
6.

Perimeter fencing for playground
7.

Bike amenity / bike rack
8.

Water bottle refill station
9.

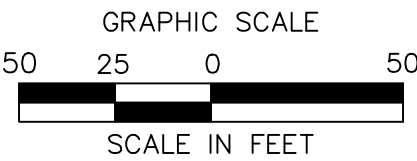
ADA improvements

LEGEND

- Project area
- Improve accessibility
- Bike friendly
- Water bottle refill station



OWEN FISH PARK, 1443 2-STRATFIELD ROAD
CONCEPT PLAN



AMENITY LIST

- EXISTING AMENITIES
- 1. Baseball field
 - 2. Softball field
 - 3. Soccer field
 - 4. Tennis courts
 - 5. Off-street parking area
- PROPOSED AMENITIES
- 1. Two(2) multi-use turf fields
 - 2. Sports field lighting
 - 3. New parking area long Old Dam Road
 - 4. Re-configured main parking area with rain garden
 - 5. Dog park
 - 6. Pedestrian loop path along park connected with existing trail system
 - 7. Bike amenity / bike rack
 - 8. Water bottle refill station
 - 9. ADA improvements

LEGEND

- Project area
- Improve accessibility
- Bike friendly
- Dog friendly area
- Enhance tree canopy
- Water bottle refill station



AMENITY LIST

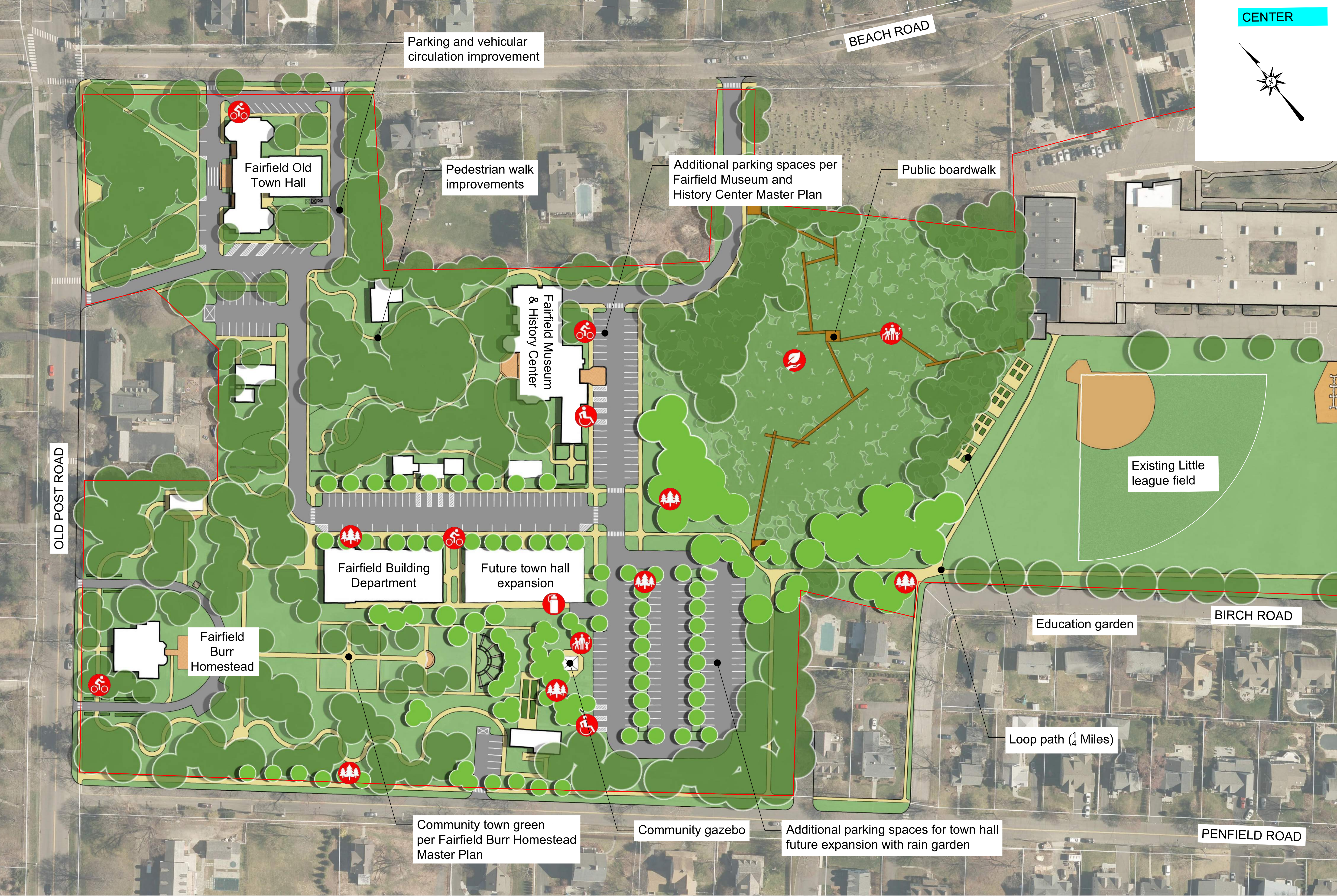
- EXISTING AMENITIES
- 1. Little league field
- PROPOSED AMENITIES
- 1. Loop path
 - 2. New parking spaces with rain garden
 - 3. Community gazebo
 - 4. Pedestrian walk with park
 - 5. Education garden
 - 6. Water bottle refill station
 - 7. ADA improvements

Concept plan includes elements shown on the following master plans:

- 1) Fairfield Burr Homestead
- 2) Fairfield Museum and History Center

LEGEND

- Project area
- Improve accessibility
- Bike friendly
- Multi-generation activity
- Enhance tree canopy
- Enhance natural resources
- Water bottle refill station



AMENITY LIST

- EXISTING AMENITIES
- 1. Baseball field
 - 2. Little league field
 - 3. Press box
 - 4. Batting cage (little league field)
 - 5. Picnic area (at little league field)
 - 6. Pickleball courts (qty. 4)
 - 7. Playground (replaced 2022)
 - 8. Off-street parking areas (upper and lower)

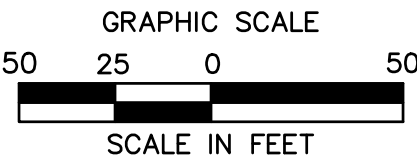
- PROPOSED AMENITIES
- 1. Batting cage (baseball field)
 - 2. Field improvements (little league field)
 - 3. Field improvements (baseball field)
 - 4. Pickleball courts (additional 2 courts)
 - 5. Seating/gathering area for pickleball courts
 - 6. Pedestrian pathway improvements
 - 7. Re-configure upper parking lot
 - 8. Bike amenity / bike rack
 - 9. Water bottle refill station
 - 10. ADA improvements

LEGEND

- Project area
- Improve accessibility
- Bike friendly
- Multi-generation activity
- Water bottle refill station



TUNXIS HILL PARK, 225 MELVILLE AVENUE
CONCEPT PLAN



AMENITY LIST

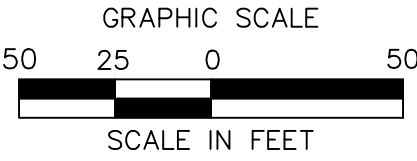
- EXISTING AMENITIES
- 1. Playground
 - 2. Softball field
 - 3. Bocce courts (QTY. 6)
 - 4. Off-street parking area
 - 5. Tennis courts (QTY. 2)
 - 6. Sand Volleyball court
- PROPOSED AMENITIES
- 1. Park entry improvements including pavers and columns
 - 2. New pedestrian pathways throughout park
 - 3. Re-stripe main parking area
 - 4. Reconfigure parking area at tennis courts
 - 5. Rugby goal posts/field lines
 - 6. Public art pads along Edward St
 - 7. Bike amenity / bike rack
 - 8. Water bottle refill station
 - 9. ADA improvements

LEGEND

- Project area
- Improve accessibility
- Bike friendly
- Multi-generation activity
- Water bottle refill station



VETERANS PARK, 909 REEF ROAD
CONCEPT PLAN



AMENITY LIST

- EXISTING AMENITIES
- 1. Playground
 - 2. Open Space
 - 3. Salt water estuary with boat launch

- PROPOSED AMENITIES
- 1. Community pavilion
 - 2. Enhanced entry marker with landscaping
 - 3. Wood board playground relocation
 - 4. Low impact loop path in open space, connect to existing trail system
 - 5. Outdoor classroom with sitting area (40 max)
 - 6. Bird/Wild animal watching viewing platform
 - 7. Picnic/seating area next to playground
 - 8. Water bottle refill station
 - 9. Kayak launch

LEGEND

- Project area
- Improve accessibility
- Bike friendly
- Multi-generation activity
- Enhance natural resources
- Water bottle refill station



ASH CREEK OPEN SPACE, RIVERSIDE DRIVE TURNEY RD
CONCEPT PLAN

