

# Apple Creek Corporate Center

## 330 Acres—Industrial



**GASTON COUNTY**  
Economic Development Commission  
North Carolina

**Price—\$65,000 per acre**

**Dallas, NC 28034**

### FEATURES

- Location:** Located NW of the Gastonia Technology Park. Access via HWY-279 and HWY-275
- Total Acreage:** 330 AC
- Zoning:** Industrial
- Owner:** Single Ownership-Gaston County

Environmental reports available upon request

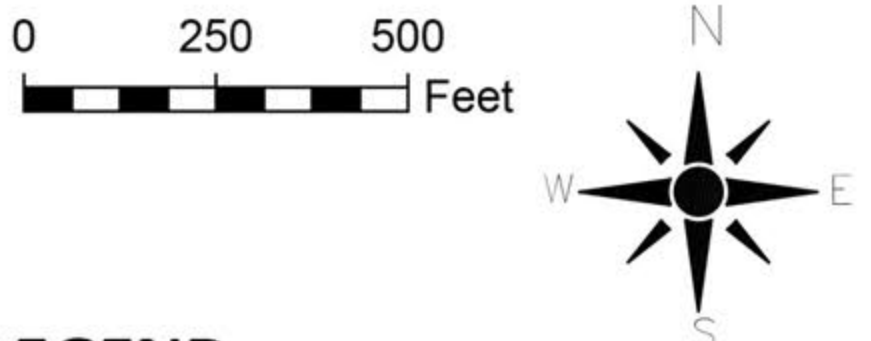
### UTILITIES

- Water & Sewer:** Two Rivers Utilities (City of Gastonia)
- Electric:** Rutherford Electric
- Natural Gas:** PSNC Energy

### TRANSPORTATION

- Proximity:**
- US-321:** < 2 miles
- I-85 :** 4.4 miles
- Charlotte Douglas Intl. Airport** 20 mi.
- City of Gastonia Municipal Airport** 11 mi.





LEGEND

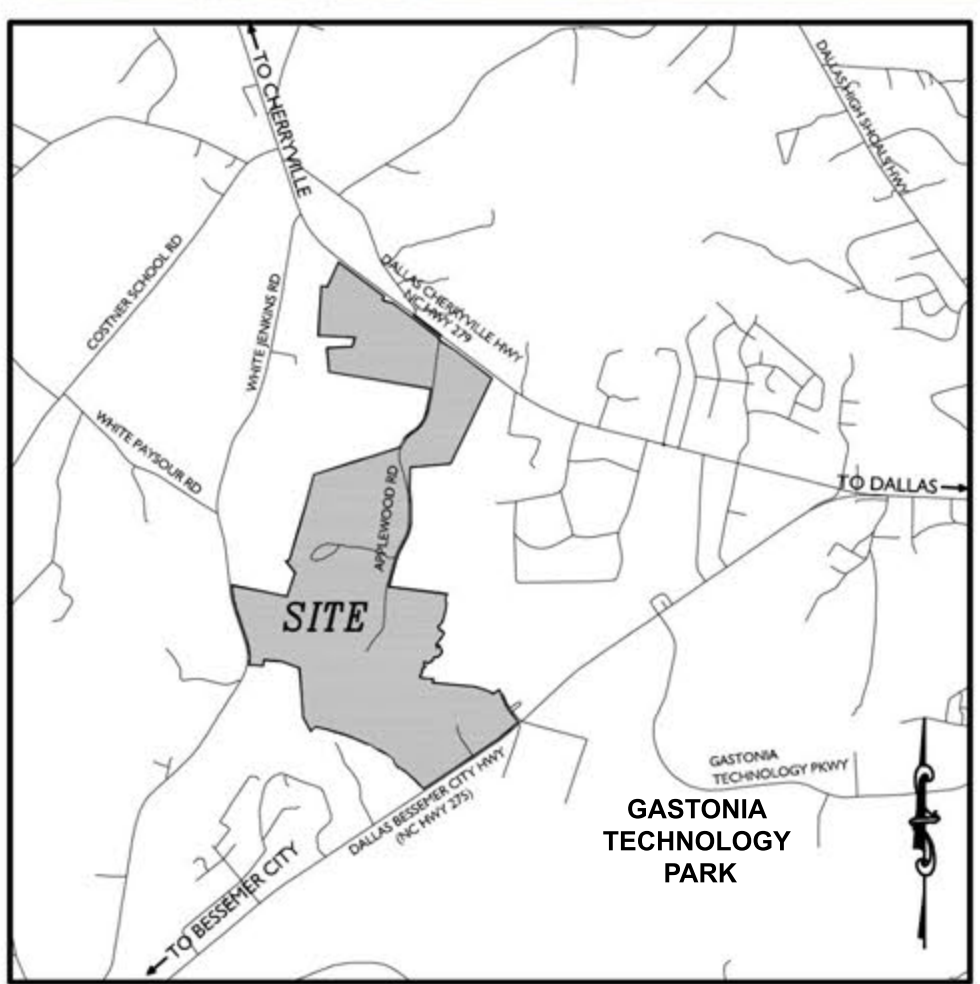
- PROJECT BOUNDARY
- EXISTING EASEMENT
- CREEK/PERENNIAL STREAM
- FLOOD ZONE X
- FLOOD ZONE AE
- FLOODWAY
- EXISTING STRUCTURE
- SETBACK

PARK FEATURES

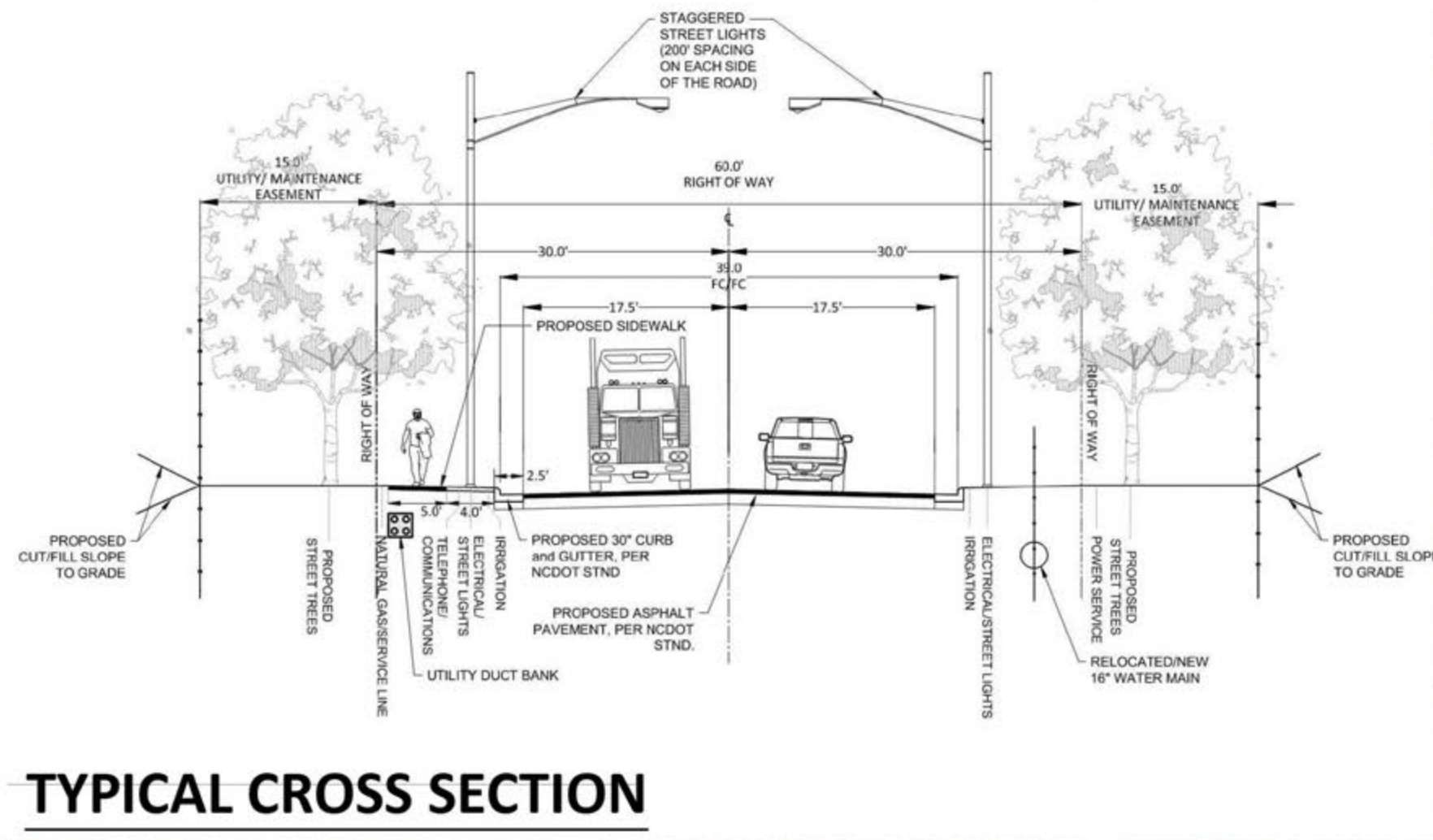
- ALL UTILITIES ARE AVAILABLE TO MEET CAPACITY NEEDS
- PROFESSIONAL CORPORATE CAMPUS ATMOSPHERE
- EASY ACCESS TO MAIN HIGHWAY TRANSPORTATION CORRIDORS
- COMMON AREAS AND ENTRANCES TO BE UNIQUELY LANDSCAPED

UTILITIES

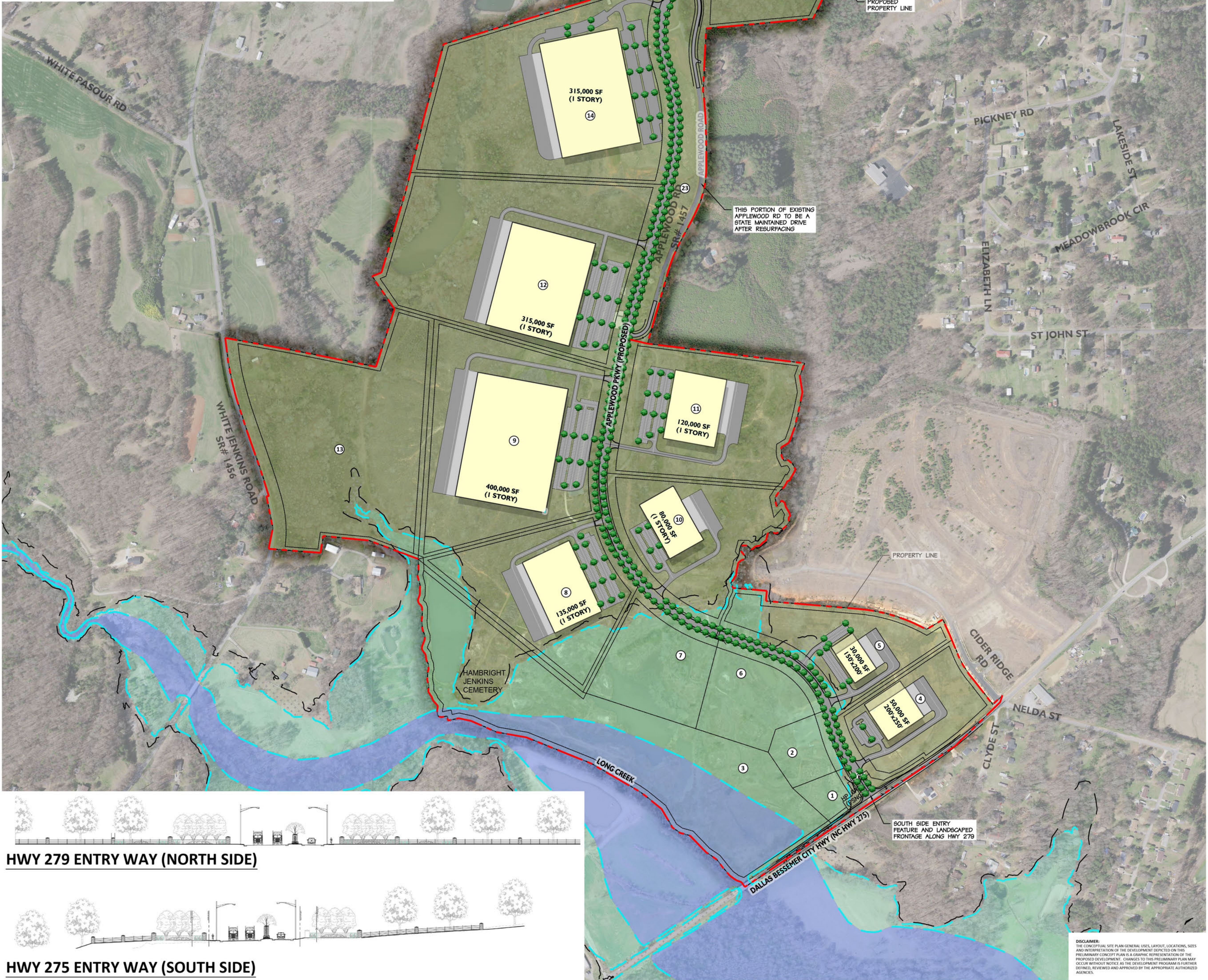
- POWER - LOOP FED
- NATURAL GAS - LOOP FED
- WATER & SEWER
- 16" MAIN WATER LINE
- UTILITY DUCT BANK FOR COMMUNICATIONS



Vicinity Map  
SCALE: 1"=3000'



TYPICAL CROSS SECTION



HWY 275 ENTRY WAY (SOUTH SIDE)