

A series of concentric, wavy dashed lines in a light blue color, located in the top-left corner of the slide. They resemble a stylized map or a ripple effect.

Pleasure Boating

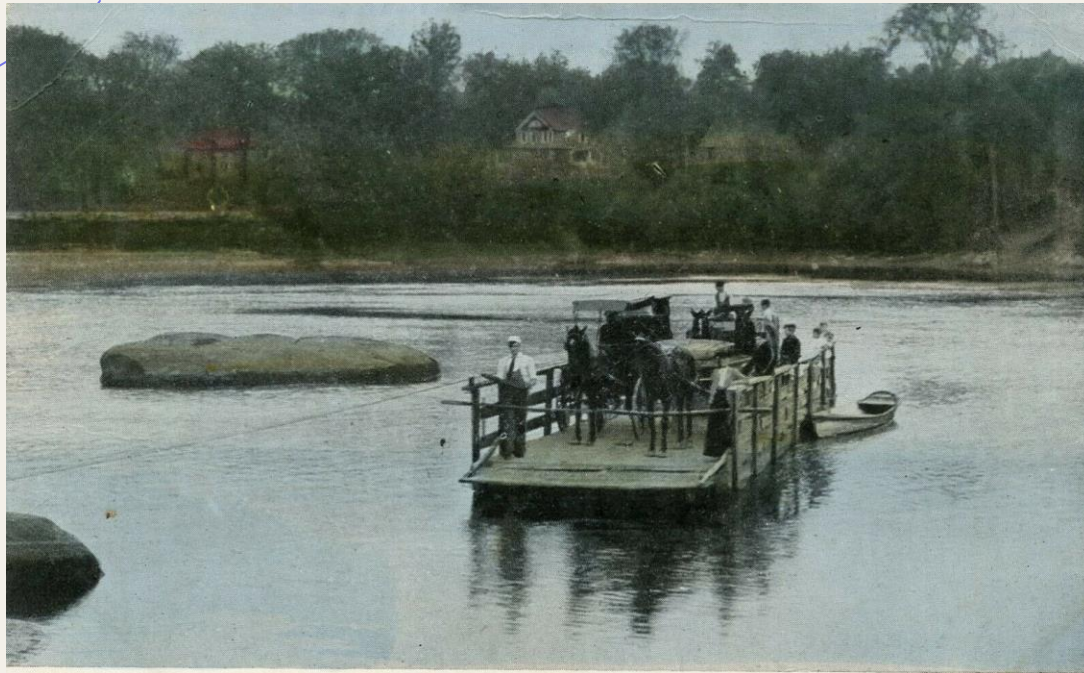
Hooksett and turn of the Century

A series of concentric, wavy dashed lines in a light blue color, located in the bottom-right corner of the slide. They resemble a stylized map or a ripple effect. A solid orange line also curves through the bottom right corner, intersecting with the dashed lines.

A History

- + The Merrimack was critical to Hooksett's commercial and industrial development
- + Late 1800's picture of boating changed
- + No longer was river profitable for hauling freight
- + The Railroad took over this role
- + and old time Ferry's faded

Martins Ferry's

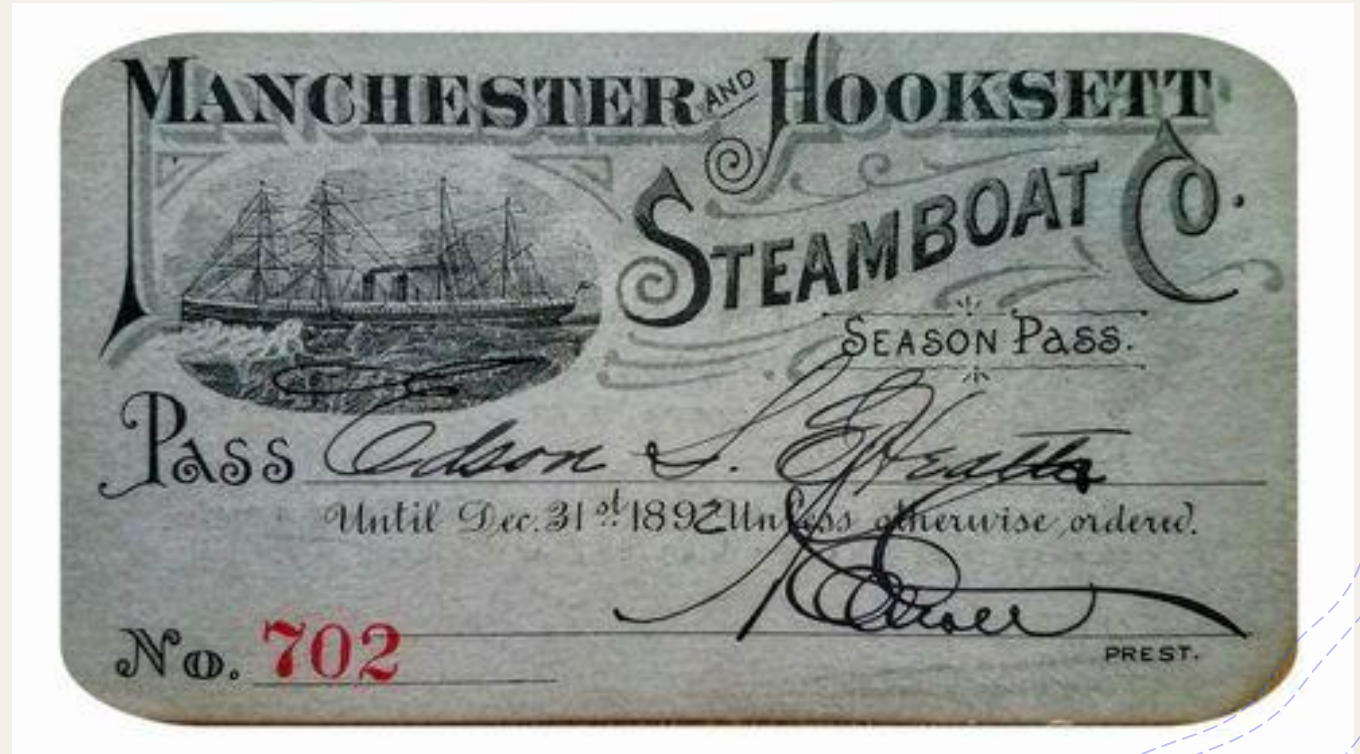


Published by Geo. A. Robie & Son The Ferry, 1909, Hooksett, N. H.



River Keeps Appeal

- + Cottages and summer Cabins appear on river
- + Small passenger boats begin to flourish
- + Manchester-Hooksett steamboat company builds several steamships



Steamers would leave Manchester



From the Riverside Pavilion





VIEW ON MERRIMAC RIVER, MANCHESTER, N.H.



A series of concentric, wavy dashed lines in a light blue color, located in the top-left corner of the slide. They resemble topographical map lines or ripples in water.

The Steamship Company's Fleet included

The General John Stark

The Lone Star

The Lucille

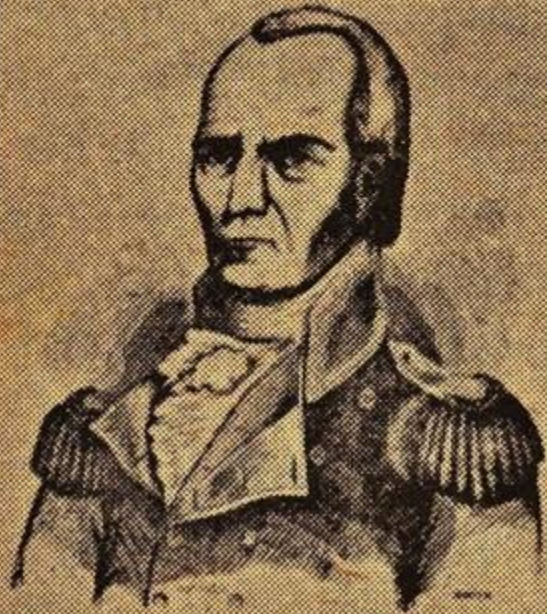
A series of concentric, wavy dashed lines in a light blue color, located in the bottom-right corner of the slide. They resemble topographical map lines or ripples in water. A solid orange line also curves through this area, starting from the bottom left and moving towards the top right.

The General John Stark

- + It was the largest of the steamships
- + Close to 90 Feet long
- + Carried about 100 passengers



Manchester and Hooksett Steamboat Company.



STEAMER
GEN.

JOHN STARK

Leaves Wharf at foot of Webster Street

✧ SUNDAYS ✧

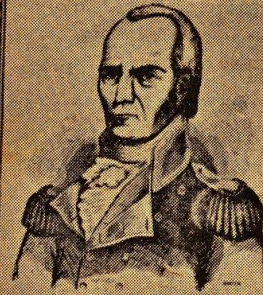
For Hooksett at 10 a. m., 1 and 4 p. m. Returning leaves Hooksett at 11 a. m., 2 and 5 p. m.

FOR RIVERSIDE

At 10 a. m., 12 m., 1, 2, 3 and 4 p. m. Returning leaves Riverside at 11.30
a. m., 12.30, 1.30, 2.30, 3.30 and 5.30 p. m.

On and after the first Sunday in July an EXTRA TRIP will be made to the PARK at 6 p. m. until further notice.

Manchester and Hooksett Steamboat Company.



STEAMER GEN. JOHN STARK

Leaves Wharf at foot of Webster Street

✱ SUNDAYS ✱

For Hooksett at 10 a. m., 1 and 4 p. m. Returning leaves Hooksett at 11 a. m., 2 and 5 p. m.

FOR RIVERSIDE.

At 10 a. m., 12 m., 1, 2, 3 and 4 p. m. Returning leaves Riverside at 11.30 a. m., 12.30, 1.30, 2.30, 3.30 and 5.30 p. m.

On and after the first Sunday in July an EXTRA TRIP will be made to the PARK at 6 p. m. until further notice.

The Merrimack River rises in northern New Hampshire, and after a course of about 120 miles its waters fall into the Atlantic ocean at Newburyport. It receives several small tributaries while flowing through one of the most beautiful, healthful and picturesque sections of country, and has numerous falls, affording immense water power. The most important of these falls is the Amoskeag, above which is a back-set of water extending as far north as Hooksett, forming a large expanse upon which boats of various kinds ply back and forth during the summer season. The most important of these vessels is the Steamer "Gen. John Stark," which makes regular Sunday trips. When taking the Steamer at the wharf located at the foot of West Webster street, by looking a little to the south west a bold and rugged mass of rock meets the view. That is Rock Rimmon, about which Indian legends and romances of the white man cluster. The next point of interest is seen on the right as you sail north, it being the monument that marks the last resting place of Gen. John Stark, whose military record places him at the head of all the New England soldiers who took part in the Indian war, and in the revolution, and in that contest against the mother country which resulted in the birth of our nation. Near Stark Park on the same bank of the river are the State Industrial School buildings, that are surrounded by beautiful grounds. Beyond on the other side of the Merrimack may be seen Barbours Park, an outing place for the vacationers during the summer. Near at hand on the right bank of the river you reach Riverside Park, where on every Sunday, there finding many attractions to enhance a day of pleasure. These grounds are very pleasantly situated, and supplied with all the conveniences that are required for resorts of their kind. The Steamer stops at the Riverside wharf, going up and coming down the river. The next point of interest is Martin's Ferry, a thriving village that lies on the left bank contentedly on the left bank of the beautiful Merrimack. Further north on the right bank is the "Pinnacle," an eminence that o'er tops all the surrounding country, being a very prominent landmark for miles around. The North of the Pinnacle makes it an excellent observatory, and much interest is attached to this mountain on account of the gold and silver found in the rocks and soil at its base and sides. The next point of interest is the landing at Hooksett, where you should go to the Ayer House, where Landlord Atwood will serve a lunch or dinner to your entire satisfaction.

HORSE CARS CONNECT EVERY TRIP.

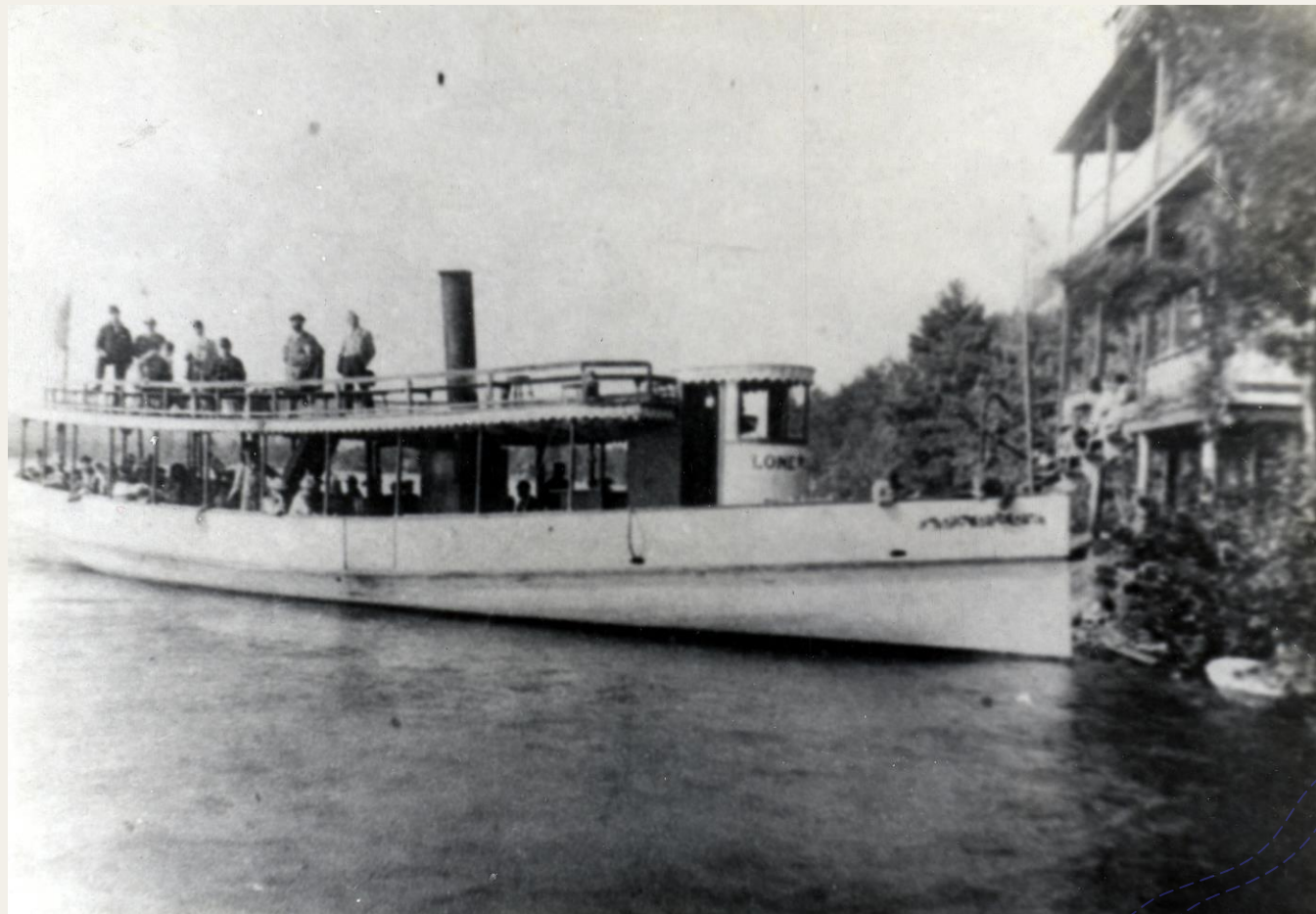
THE BOAT CAN BE HAD FOR
PRIVATE · PARTIES · OR · MOONLIGHT · EXCURSIONS
AT REASONABLE RATES.

APPLY TO D. R. HOLLAND, at office of DeCourcy & Holland, 1164 ELM ST., COR. BRIDGE
E. S. WHITNEY, AGENT.

The Steamships itinerary

- + Stops at Stark Park
- + Riverside Pavilion
- + Martins Ferry
- + Hooksett Village- Including side trips to
- + The Pinnacle
- + with Lunch or Dinner at Ayers Tavern

The Lone Star



A black and white photograph of a river scene. In the center, a boat is docked at a wooden pier. Several people are standing on the pier and on the riverbank. The background shows a forested hillside. The image has a vintage feel with some grain and a slightly faded quality. There are decorative white dashed lines in the top left and bottom right corners, and a solid orange line in the bottom right corner.

Manchester (N.H.) Historic Association

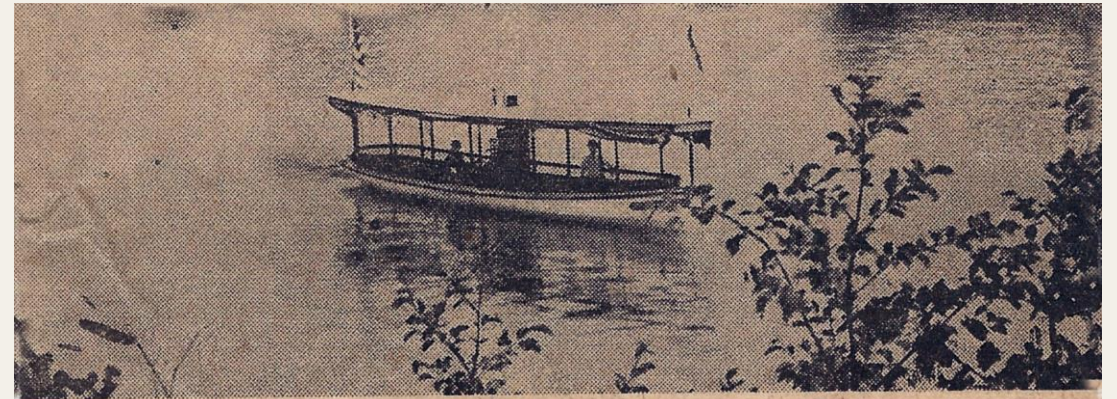
The Lucille

Riverside Inn, Hooksett, N. H.

Dock at Hooksett Village



Other Scenes



BOATING ON THE MERRIMACK was considered THE thing on a Sunday afternoon around the turn of the century. Here a private motor yacht serenely chugs up the river while its two occupants enjoy the occasion.

Conclusion

- + The Steamship company was dissolved in the 1950's by Legislative action for
- + Failure to make annual returns to the Secretary of State
- + The Merrimack River continues to see private boats and docks
- + In the 1990's the State begin to operating the Lamberts Park Boat Launch
- + Serving motorboats and canoe's

