

Bricks ,Granite and
Blocks +

HOOKSETT FAMILY
TRADES

The Family Business



Bricks



Blocks



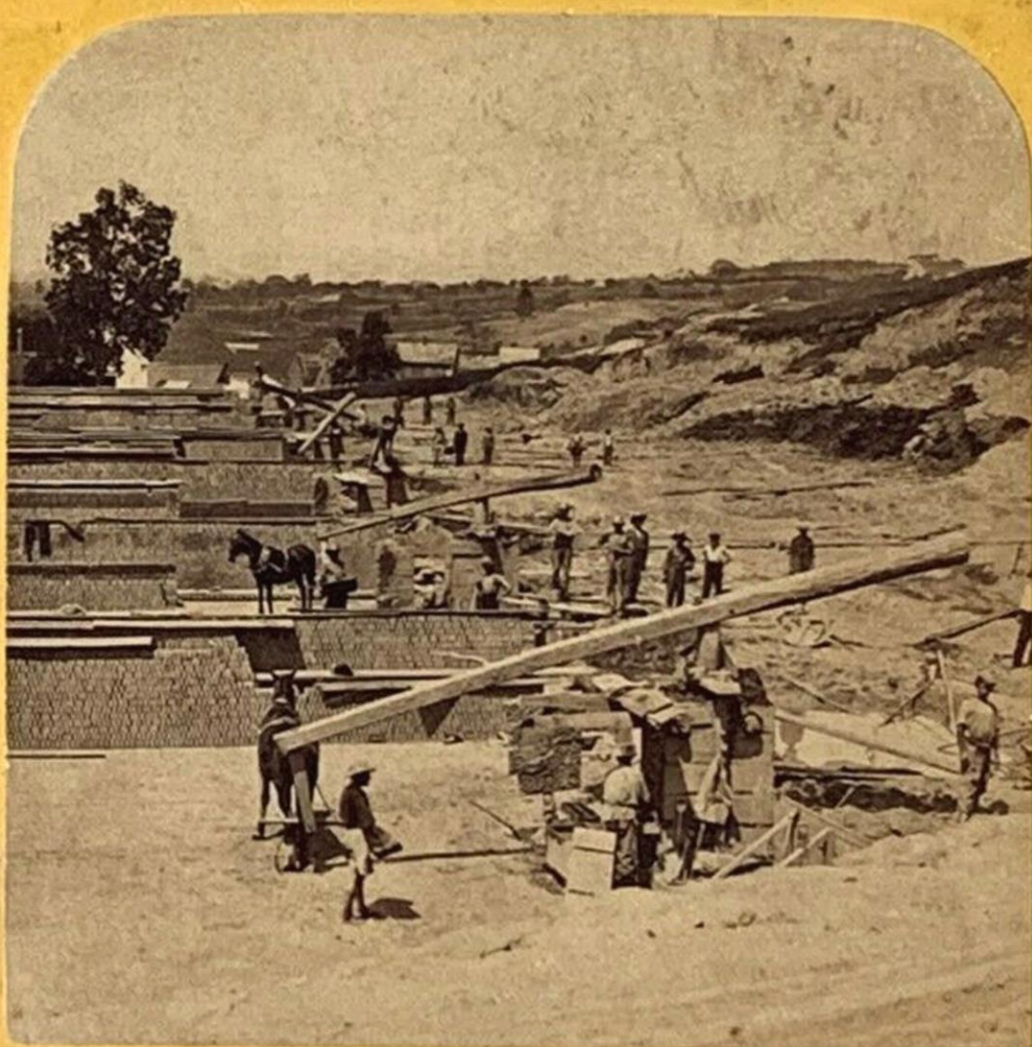
Granite

- Head's
- Belisle's
- Donati's

Heads Brick yard



ONE OF THE BRICKYARDS BELONGING TO W. F. HEAD & SON AT HOOKSETT.



Workers and Boarding House



Shipyard Boarding
House (Crest)
July 1889 to Aug

Donati and Duracrete

THE **NEW** BEAUTY OF CONCRETE MASONRY

**FORMBLOC
NORLITE
BES-STONE**

*The beauty of building
with modern concrete
block is this*

THE LEAST EXPENSIVE INSULATED
REINFORCED CONCRETE

LIGHT WEIGHT, LOW COST MASONRY

MASONRY WITH BEAUTY, CHARACTER
AND INDIVIDUALITY

▶ IT'S
▶ PERMANENTLY
▶ BEAUTIFUL!

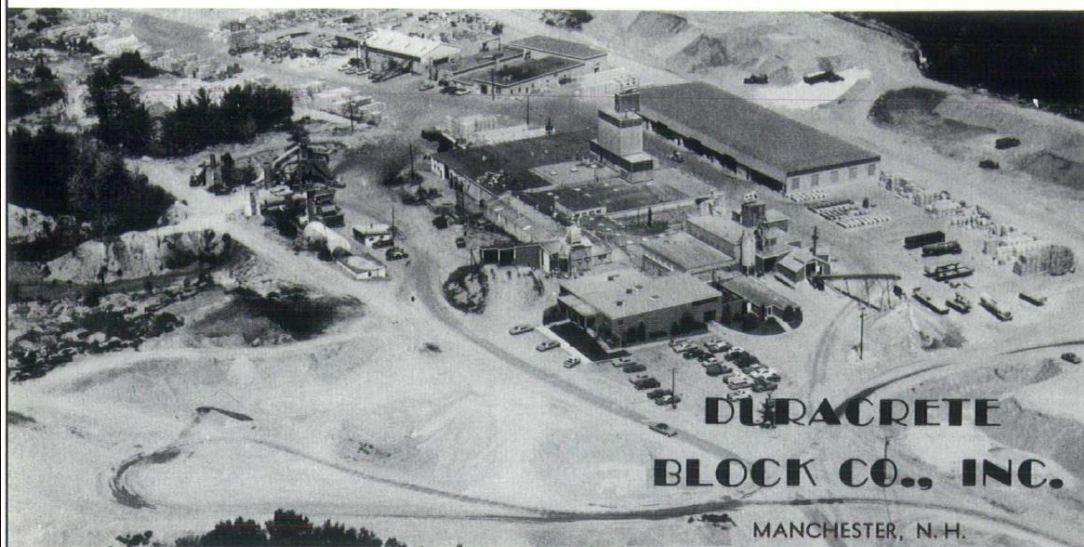
DURACRETE BLOCK CO., INC.
MANUFACTURERS OF DURACRETE & DURALITE BLOCKS
BOX 217a . . . MANCHESTER, N. H.

DIAL NA 4-1293 . . . NA 2-7011

Cement Blocks

The architect, with gracious acknowledgment of the designer's purpose, often leaves his mark of cooperation in the manner of architectural accents.

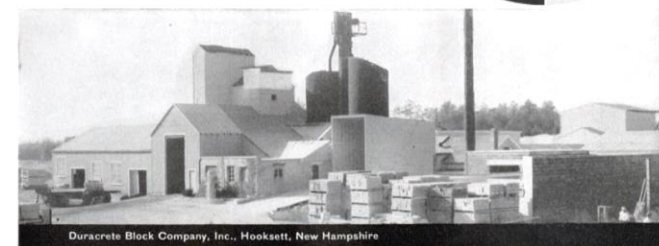
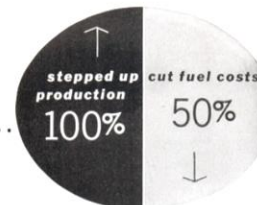
Few building materials combine structural significance and ornamental opulence quite the way **BLOCK** accents do.



DURACRETE'S MODERN CEMENT BLOCK PLANT — HOOKSETT, N.H.

How a

KEWANEE Reserve Plus Rated boiler...



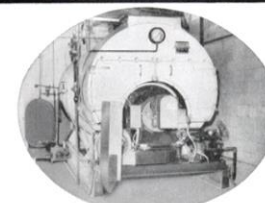
■ Anyone would find it difficult to prove to Dante V. Donati, Manchester, New Hampshire, that Kewanee Reserve Plus Rated Boilers do not pay dividends. That's because he discovered it the hard way. First, he bought an ordinary boiler for his plant at the Duracrete Block Company. He operated it one year, and then . . . but let him tell the story—

"We installed an ordinary boiler and found it to be inadequate. We then purchased a Kewanee Unit. Our production was stepped up more than 100% . . . with fuel costs cut in half. Maintenance cost is extremely low. The quality of our product has improved because of lower moisture content due to ample steam for processing."

Judging from Mr. Donati's experience it just makes sense that it's money in the bank to follow the Kewanee Reserve Plus Rating Plan in selecting a boiler. So when you choose a boiler, know these important facts:

- 1—Boiler rating must be based on nominal capacity, not maximum capacity;
- 2—Boilers must have sufficient built-in reserve to meet changing demands;
- 3—Boilers must have sufficient capacity to operate at "cruising speed," not maximum speed at all times;
- 4—Like examples must be considered in comparing boilers. Don't be confused by vague technical claims.

Choose Kewanee and cut fuel costs—lower maintenance—reduce breakdowns—get longer boiler life.



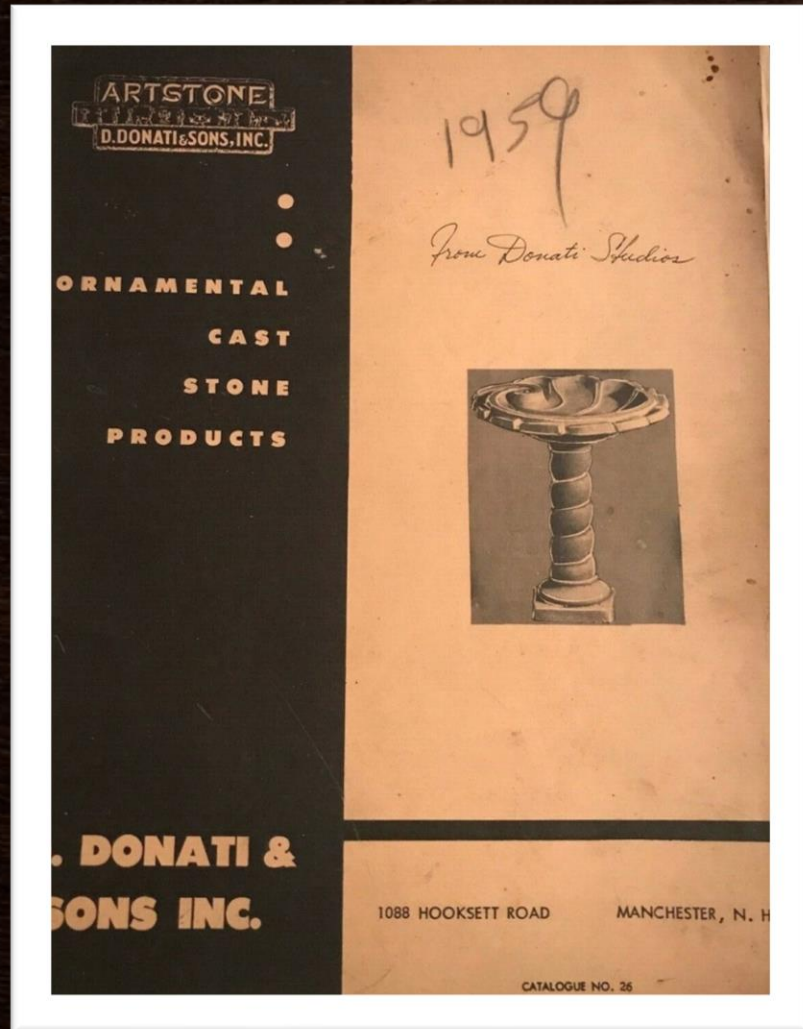
Here is No. 85-60 Kewanee Oil Fired Boiler-Burner Unit installed at the Duracrete Block Company.



Head Quarters and Matchbooks



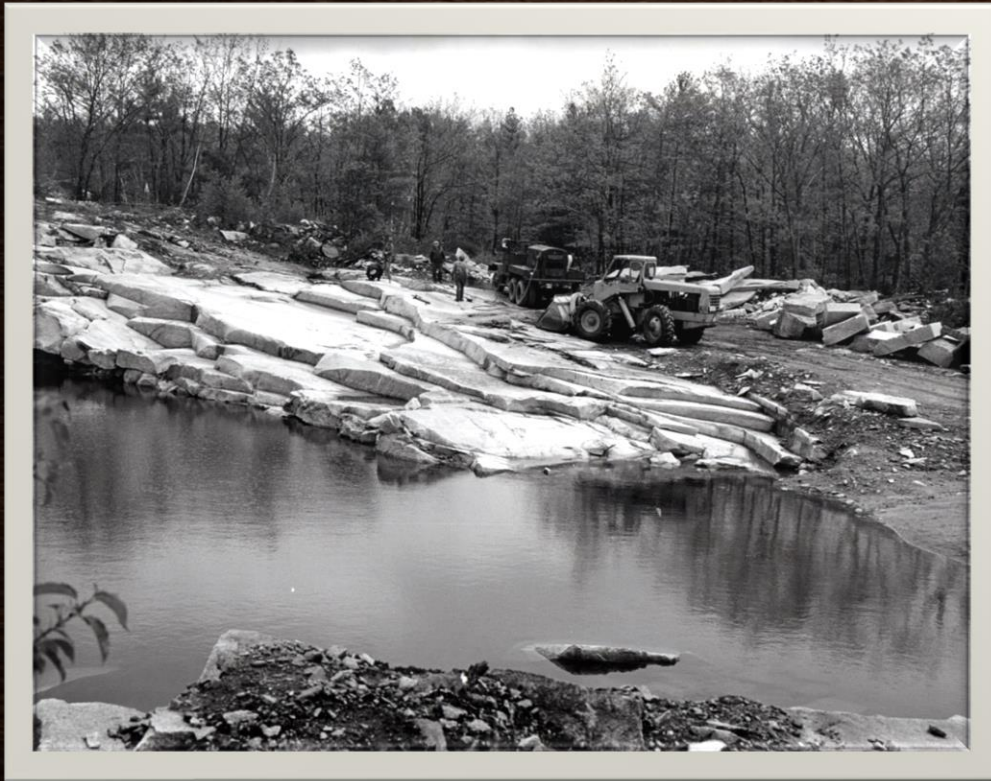
Donati's Artstone



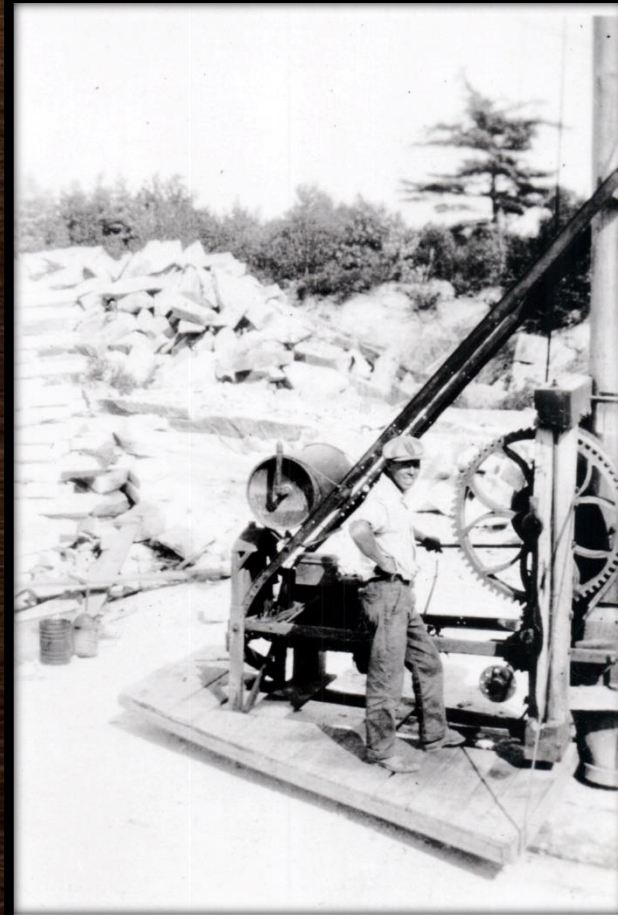
Belisle Quarry



Yard and Workshop



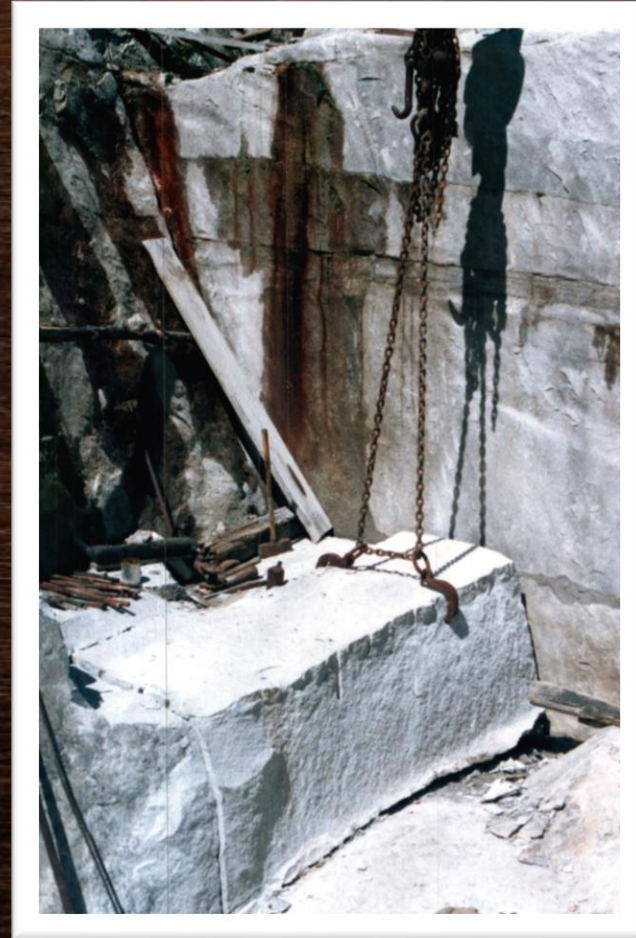
In the Field



Granite Stones



At work



Flooding



Final stages



Other Businesses of Note

- Lumber - Thompson , Roger and Davis
- Tomato ketchup - J S Burbank & Co
- Cotton Goods - Dundee and Emerson Mills, Amoskeag
- Sand and Gravel - Manchester Sand and Gravel, Bronx

HOOKSETT.

Burbank, John S., bottled mustard, ketchup.
Dundee Mills, cotton goods.
Hamel, W., bakery.
Head, W. F. & Son., brick.
New England Brick Co., brick.
Rogers & Davis, lumber.
Thompson, James, lumber.

Thompson, James, lumber.
Rogers & Davis, lumber.

+BURBANK'S+



TOMATO KETCHUP

½ of 1 per cent of Benzoate of Soda slightly colored.

P. O. Address - - - Manchester, N. H.
J. S. BURBANK & CO.

PUT UP BY MRS. BURBANK.

MANUFACTURED AT THEIR FARM
SOUTH HOOKSETT, N. H.

No business relating to the sale or preservation of this ketchup

Guaranteed under the Pure Food and Drug Act of June, 1906. Serial No. 4444

MANUFACTURED AT THEIR FARM

SOUTH HOOKSETT, N. H.

P. O. Address - - - Manchester, N. H.
J. S. BURBANK & CO.

PUT UP BY MRS. BURBANK.



Manchester Sand and Gravel