



All Aboard

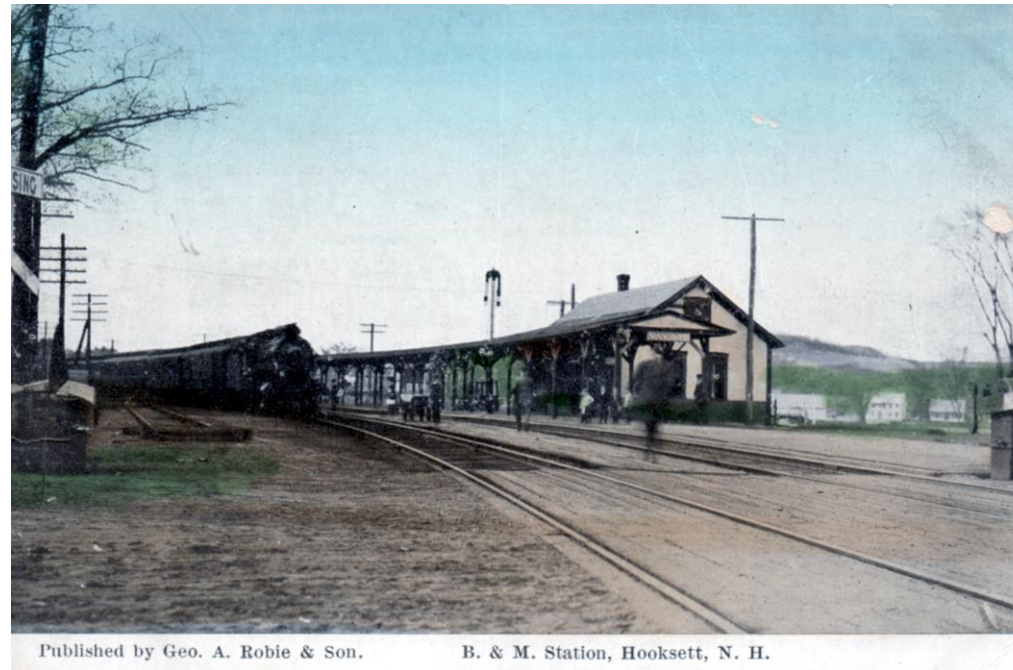
Hooksett Depots

Hooksett Facts

- Village Depot
- Martins Ferry Depot
- Served by the Boston and Maine Railroad
- Concord and Portsmouth Railroad
- Suncook Valley Railroad



Hooksett Village Depot



Published by Geo. A. Robie & Son.

B. & M. Station, Hooksett, N. H.



At Peak 20 trains
stopped

5 Cents from
Hooksett to
Suncook

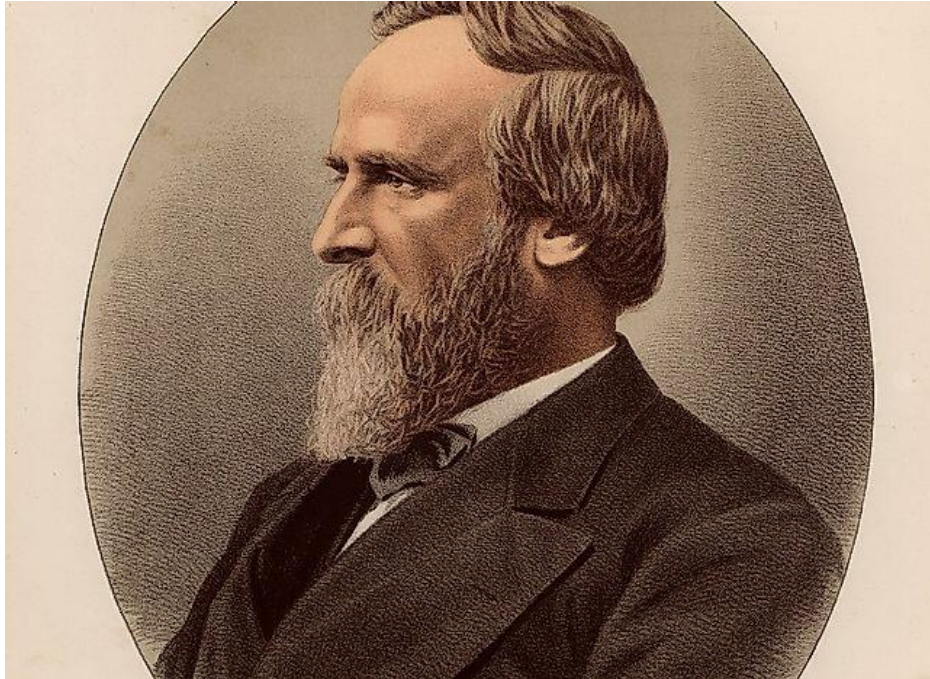
1910 Extension
removed

Early 1900's





Presidential Speech August 23, 1877



Rutherford B Hayes

- 19th President of United States , stopped at Hooksett Village Depot during his five-day visit to NH during his New England tour.
- The words of his brief speech is available [August 23, 1877 \(rbhayes.org\)](http://rbhayes.org)

1930's- looking north



Station Master George Keating



1863- 1944

Came to Hooksett 1903

Station master 1903-1936

Served as Justice of Municipal Court

Lived in House next to Town hall

Died March 1944



Other Views- From Riverside/ looking south



1930's looking South and a painting



Flood of 1936 and aftermath





Schedules

SUNCOOK VALLEY RAILWAY.							
To Hooksett.				From Hooksett.			
Mls	STATIONS.	Pass.	Mixed	Mls	STATIONS.	Mixed	Pass.
	LEAVE	A.M.	P.M.		LEAVE	A.M.	P.M.
0	PITTSFIELD ..	9.00	2.00	0	HOOKESETT	10.45	5.17
3	Webster's Mills .	9.09	2.15	3	Suncook	11.00	5.25
5	Chichester.....	9.15	2.25	7	Allenstown	11.20	5.37
7	Epsom.....	9.24	2.40	11	Short Falls	11.37	5.45
9	Short Falls	9.30	2.50	13	Epsom	11.52	5.54
13	Allenstown.....	9.40	3.05	15	Chichester.....	12.05	6.00
17	Suncook.....	10.05	3.35	17	Webster's Mills .	12.15	6.06
20	HOOKESETT	10.12	3.45	20	PITTSFIELD .	12.30	6.15
	ARRIVE	A.M.	P.M.		ARRIVE	P.M.	P.M.

CONCORD RAILWAY and BRANCHES.

GENERAL OFFICES—CONCORD, N.H.

(July 5, 1875.

HON. ONSLOW STEARNS, President.

STEPHEN KENDRICK, President Portsmouth Ry.

H. E. CHAMBERLIN, General Superintendent.

E. A. STRAW, President Man. & Law. Ry.

SAML. N. BELL, President Suncook Valley Ry.

J. W. WARDWELL, General Ticket Agent.

MAIN LINE TIME TABLE.

NASHUA to CONCORD.

Mile	STATIONS	Accm.	Exps.	Pass.	Exps.	Accm.	Accm.
	LEAVE	A.M.	A.M.	P.M.	P.M.	P.M.	P.M.
0	NASHUA....	8.45	9.22	1.35	7.29	4.10	6.38
6	Thornton's...	9.00	9.33	1.49	7.41	4.24	6.53
9	Reed's.....	9.08	9.39	1.57	7.47	4.31	7.02
13	Goff's.....	9.18	9.47	2.06	7.55	4.40	7.12
17	MANCHESTER.	9.37	9.56	2.20	8.04	4.52	7.27
22	Martin's	9.48	10.06	2.31	8.15	5.04	7.38
26	Hooksett.....	9.57	10.14	2.40	8.24	5.14	7.47
28	Suncook.....	10.04	2.48	7.54
32	Robinson's...	10.22	8.32	5.23
37	CONCORD....	10.20	10.32	3.05	8.42	5.35	8.16
	ARRIVE	A.M.	A.M.	P.M.	P.M.	P.M.	P.M.

CONCORD to NASHUA.

Mile	STATIONS.	Pass.	Pass.	Pass.	Exps.	Accm.	Exps.
	LEAVE	A.M.	A.M.	A.M.	P.M.	P.M.	P.M.
0	CONCORD...	5.30	7.30	10.15	3.35	4.15	7.30
5	Robinson's...	5.41	10.26	3.47	7.40
9	Suncook	7.45	4.35
11	Hooksett.....	5.50	7.51	10.35	3.57	4.41	7.45
15	Martin's	5.59	8.01	10.45	4.07	4.50	7.54
20	MANCHESTER.	6.15	8.15	10.58	4.22	5.02	8.08
24	Goff's.....	6.24	8.25	11.09	4.32	5.12	8.16
28	Reed's.....	6.33	8.36	11.20	4.42	5.22	8.24
31	Thornton's...	6.41	8.45	11.29	4.49	5.30	8.30
37	NASHUA....	6.55	9.00	11.45	5.04	5.45	8.41
	ARRIVE	A.M.	A.M.	A.M.	P.M.	P.M.	P.M.

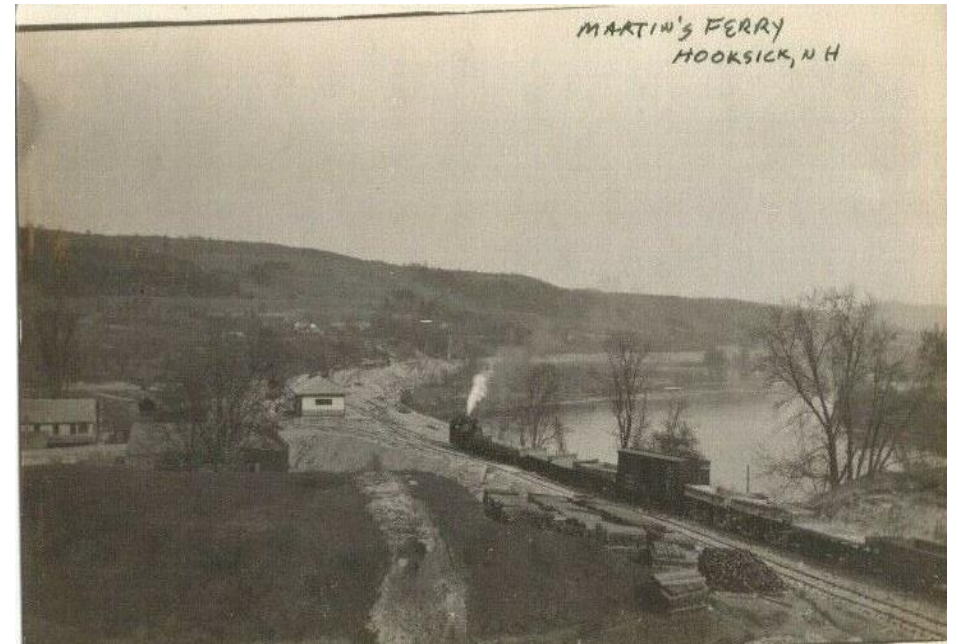
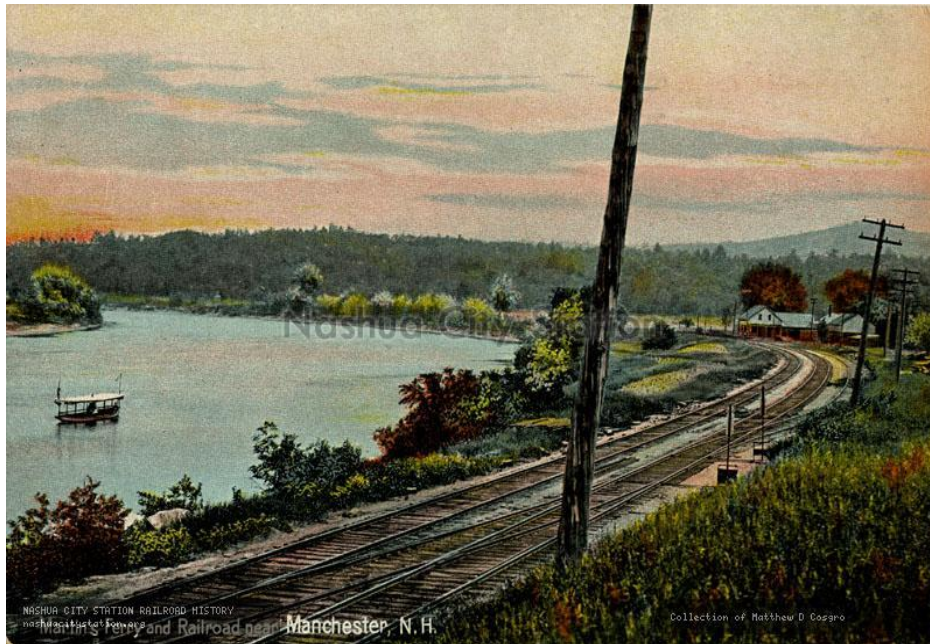
NOTE.—Sunday Passenger Train leaves Concord at 6.15 a.m., arriving at Nashua at 7.45 a.m., and leaves Nashua at 6.45 p.m., arriving at Concord at 8.15 p.m.

WHITE MOUNTAIN EXPRESS leaves Concord at 10.42 a.m.; leaves Nashua at 3.57 p.m.

Martins Station- From post card looking north



Other views



J. Wilkin's Studio,

SUNCOOK, N. H.

Martin's Depot - Herbert M. H.



F. Wilkin's Studio,

SUNCOOK

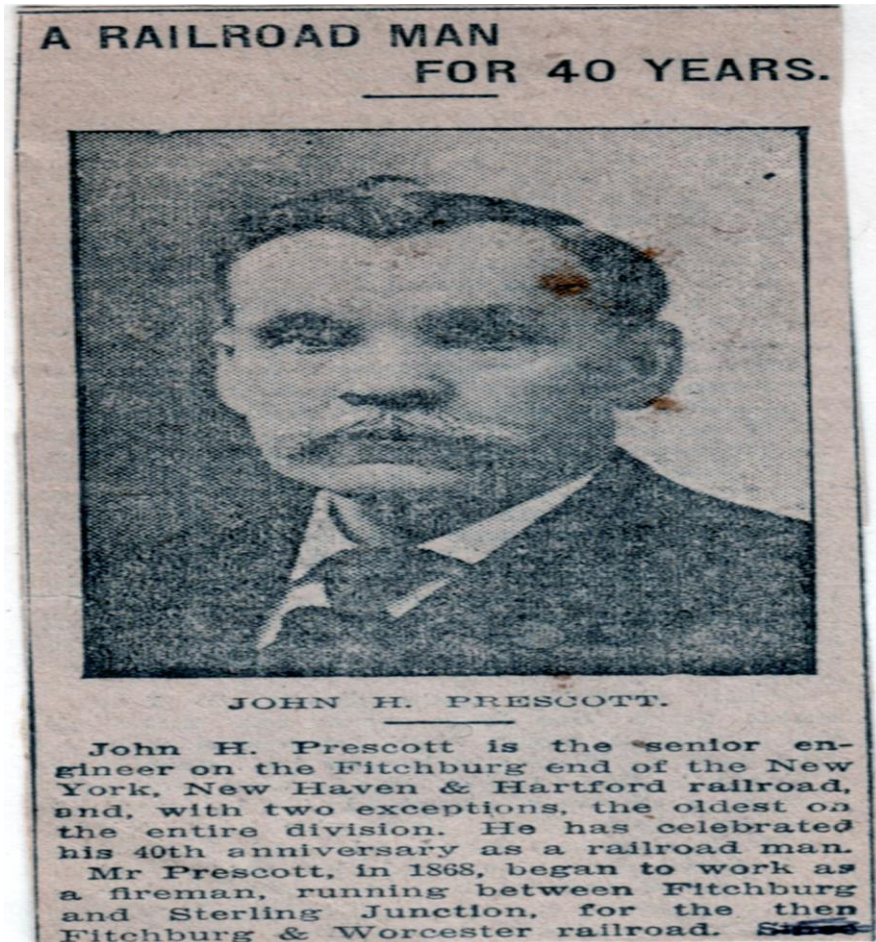
Martin Debet Hobbes



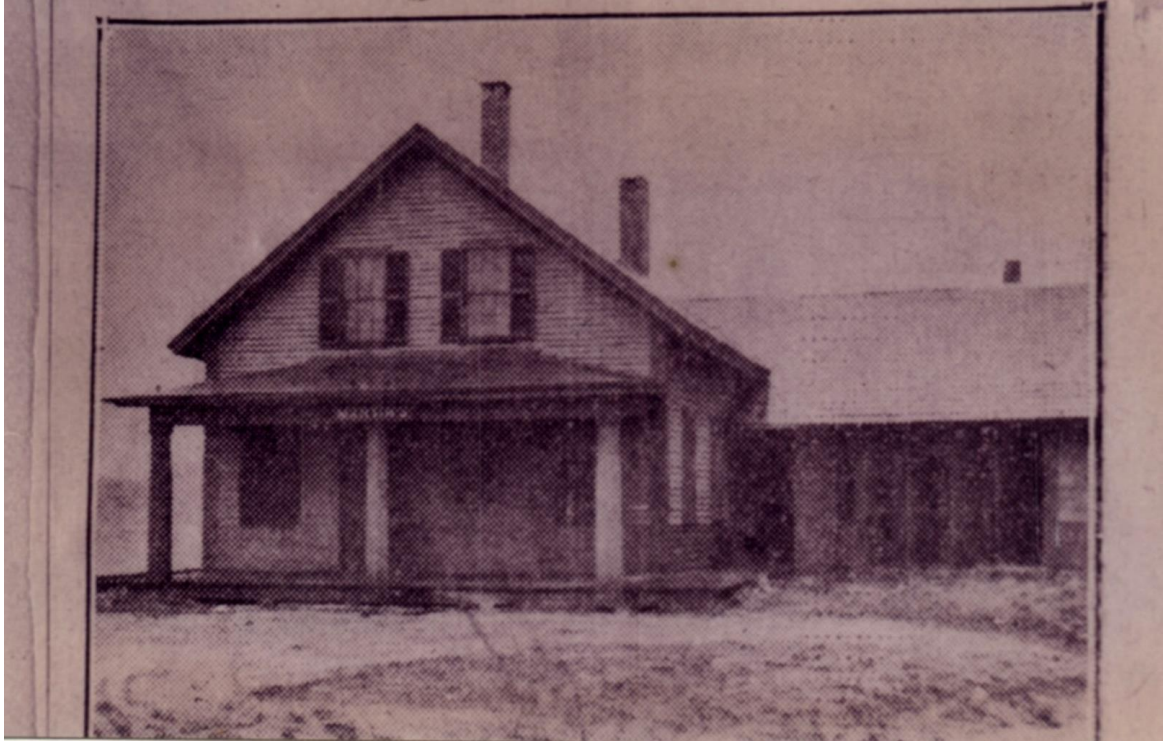
1899 - Edwin Tyrrell Station Master 1887 to
1900's and circa 1930's



John H Prescott Station Master born 9/16/1877



SCENE OF HOOKSETT RAID



Great Raid 1940's '

Unknown Prominent citizens
Were raided after a night of
Extra Curricular activities,
Police chief Clough served
during this time

Picture taken shortly before
it was demolished

HOOKSETT STATIONS

[Stations](#) / [New Hampshire](#) / [Merrimack](#) / [Hooksett](#)

Station	Location	Railroad
Hooksett	Hooksett	Concord, Manchester and Lawrence Railroad Concord Railroad Corporation The Concord and Montreal Railroad Boston and Maine Railroad
Martin	Hooksett	Boston and Maine Railroad
Martin's	Hooksett	Concord, Manchester and Lawrence Railroad Concord Railroad Corporation The Concord and Montreal Railroad

The End

