

An aerial photograph of a city street intersection, likely in Hudson, New York. The image shows a mix of brick and stone buildings, some with multiple stories. A central green space with trees is visible at the intersection. The text overlay is a white, tilted rectangle on the left side of the image.

STARR WHITEHOUSE

Landscape Architects
and Planners PLLC

PUBLIC SQUARE RENOVATION

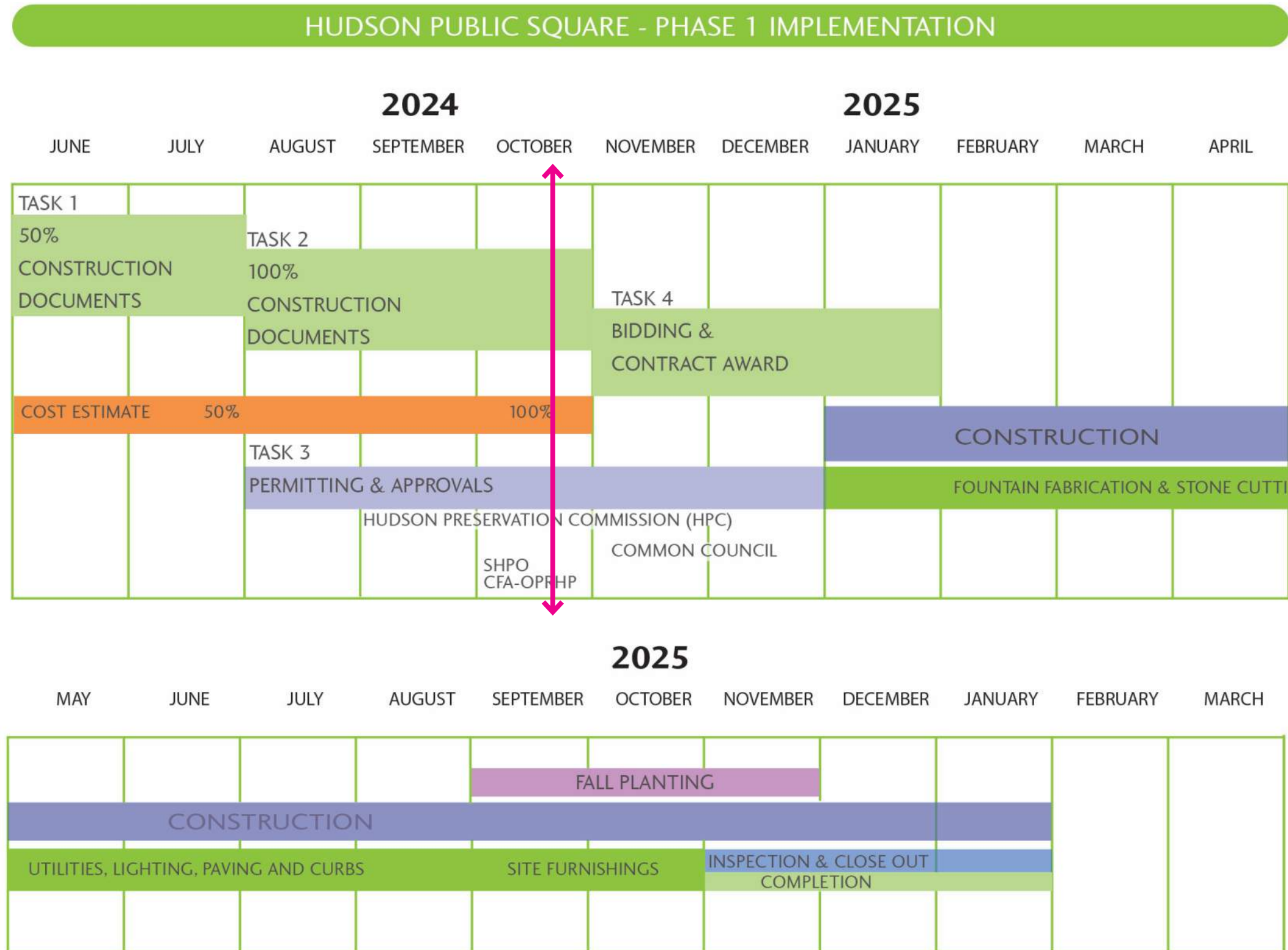
Friends of the Public Square
The City of Hudson

Phase 1 & 2 Implementation Plans

October 25, 2024

Hudson Public Square

PROJECT SCHEDULE



Hudson Public Square

PROJECT GOALS

INCREASE CONNECTIVITY

- Assess, understand and respond to the Public Square's place in its contemporary urban context.
- Create a renovated Public Square for all ages and all abilities.
- Enhance pedestrian safety, better connect to neighborhood streets.
- Consider park expansion where possible, extend the perimeter sidewalks to provide increased access and additional space for street trees.

CELEBRATE HISTORY

- Create a compelling park design that respects the historic fabric while still providing flexible green open spaces that can host a wide range of activities from informal gatherings to seasonal events, performances and passive park use.
- Recapture the name "Public Square"; officially update the name from the current "7th Street Park".

RESTORE THE FOUNTAIN

- Restore the heart of the park with a new fountain, reference the original design.
- Involve the City of Hudson, The Historic Preservation Commission and local community.
- Ensure the new fountain is beautiful, playful, durable, and maintainable.
- Create an open plaza around the fountain to accommodate formal and informal gatherings.

ENHANCE THE LANDSCAPE

- Jumpstart site ecology with native plantings and permeable surfaces.
- Provide the next generation of canopy trees for shade in summer.
- Improve existing soils and lawn areas.
- Foster social wellness, encourage volunteerism and stewardship.
- Establish long term partners to support park programming and maintenance.



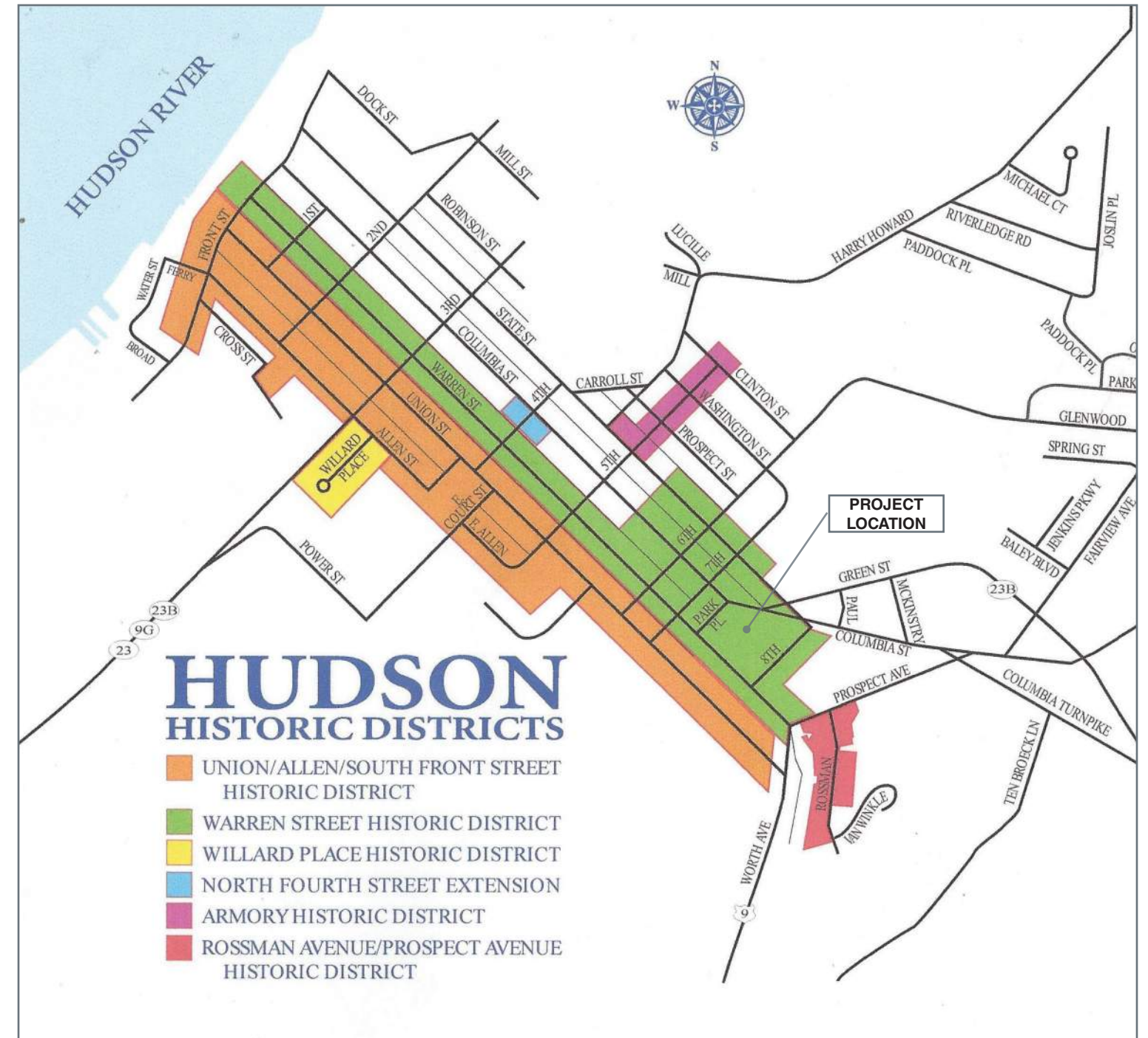
View of the existing fountain basin, looking southwest, Spring 2024

Hudson Public Square

EXISTING CONDITIONS

Project Context

- Park is located within the Warren Street Historic District but is not classified as an individual landmark on the National Register.
- Park is subject to Historic Preservation Commission (HPC) review under Chapter 169-11 of the City of Hudson building code.
- Preliminary review by New York State Historic Preservation Office (SHPO) in 2022 found no significant impacts but required review of final plans prior to implementation.
- Construction drawings will be submitted to SHPO for review prior to bid after Hudson Preservation Commission (HPC) review and concurrence.



City of Hudson Historic Districts

Hudson Public Square

PROPOSED PLAN 2024

Project Phasing

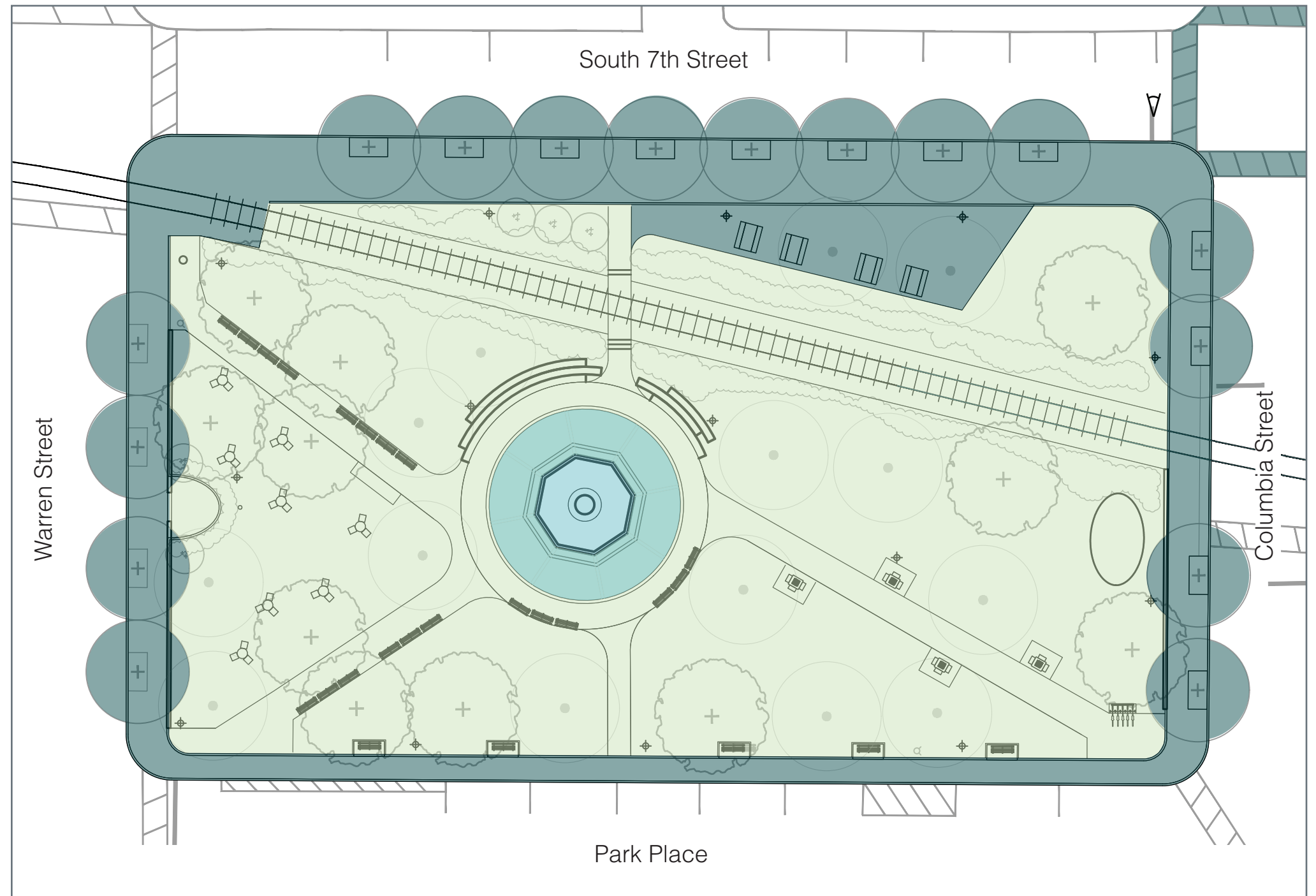
- Phase 1 - Park landscape, site furnishings; sub-surface utilities and lighting.
- Phase 2 - Fountain basins, pumps and stone plaza surrounding the lower fountain basin. Detailing for both Phase 1 and Phase 2 are included in the bid documents.
- Phase 3 - Expansion of park perimeter on Warren Street, South 7th Street & Columbia Street. Addition of street trees and granite curb.

Legend:

 Phase 1 - Park Interior

 Phase 2 - Fountain

 Phase 3 - Streetscape



Public Square Phasing Plan 2024

Hudson Public Square
PARK HISTORY

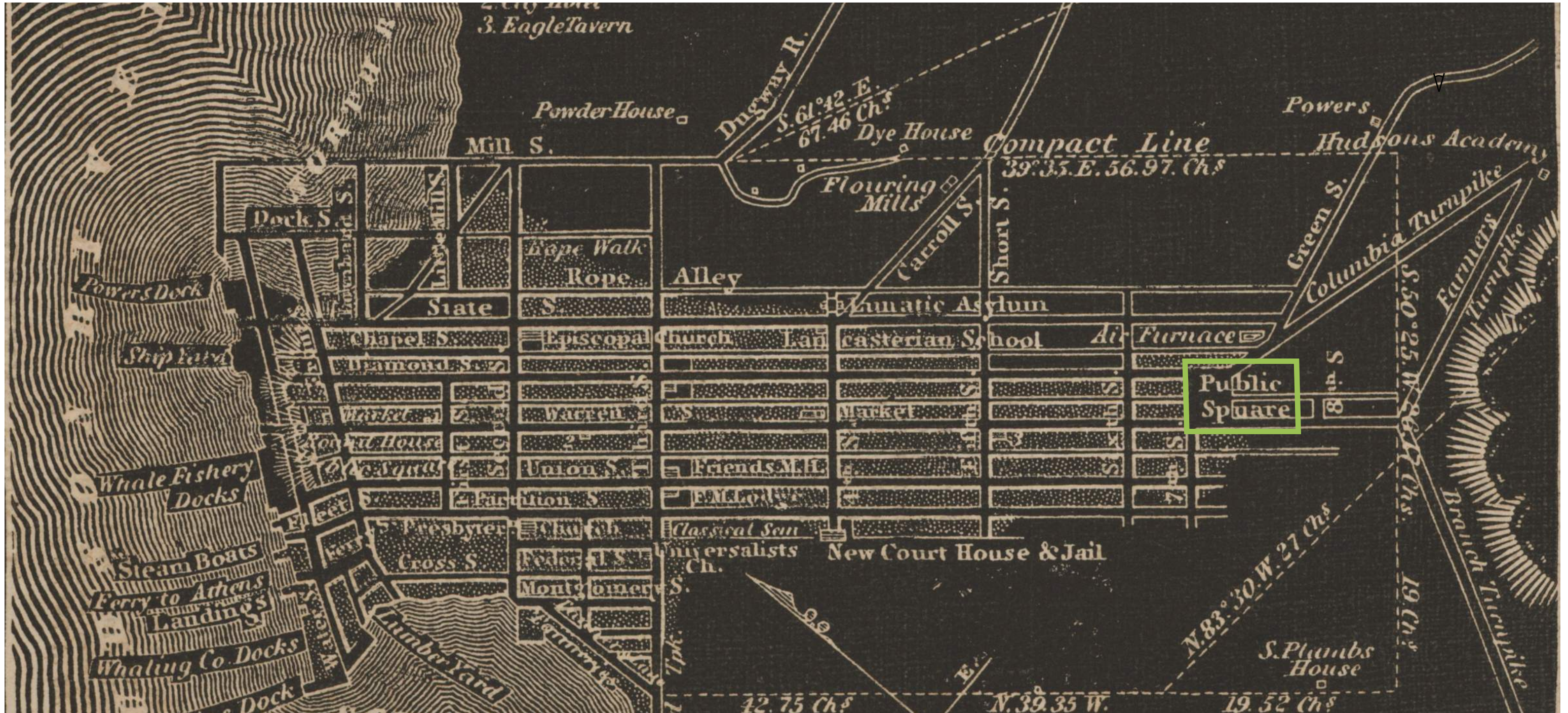


City Square, Hudson, N.Y.

201,382 (J.V.)

Hudson Public Square

PARK HISTORY - EARLY URBAN CONTEXT



1838 Grid plan of Hudson

Image courtesy of the History Room of the Hudson Area Library

Hudson Public Square

PARK HISTORY - DESIGN EVOLUTION

1785 Ezekiel Gilbert, an attorney, owns the land in front of his house, which is the area of the public square. City of Hudson incorporated.

1800 Ezekiel gifts the area in front of his house to the City of Hudson for the Public Square (possibly for a property on Warren Street).

1837 Hudson and Berkshire railroad built, severing a portion of the park at the corner of 7th and Columbia Streets from the rest of the park.

1838 Both Promenade Hill Park and the Public Square appear in the town plan, bookending with public spaces, the main street of the Hudson.

1878 The formerly paved park, “denuded of its fine old trees” (Anna Bradbury) is landscaped and planted.

1883 The 18’ high Venus fountain is installed in middle of the public square. (Hudson Gazette, August 2, 1882)

1895 Sanborn map shows the rail road and a round fountain at the center of the square.

1908 Rowles photos shows a trolley on 7th Street, the rail line through the park, a simple formal park design with the Venus fountain at the center, and young vase shaped trees (*Ulmus americana*, American Elms) planted in formal lines along the perimeter of the park.



c. 1910 View of the park looking northeast

Image courtesy of the History Room of the Hudson Area Library



1934 Teachers from the New York Training School for Girls Image courtesy of the History Room of the Hudson Area Library

Hudson Public Square

PARK HISTORY - DESIGN EVOLUTION

1930 Dutch Elm disease comes to America and begins to decimate small New England towns of their street and park trees. Loss of trees in Hudson likely occurred in the mid to late 1940's

1969 New trees, including many Norway Maples, are planted in the Square. The path system is altered and rebuilt.

1975 Venus fountain removed from the center of the park and placed on a platform close to the corner of Columbia and 7th Street. The Kiwanis Club gives the "Inspiration Fountain" to the City.

1978 Venus statue is knocked down and broken into pieces by vandals. It was restored by Robert Allen of Philmont and returned to the park in November of 1978. In 1979 a vehicle runs into Venus doing "severe damage." Robert Allen again fixes her.

1998 The statue is removed from the park and placed in storage due to very bad condition

2021 Establishment of "Friends of the Public Square" (FOPS) a 501(c) (3) with the mission of restoring the park. Public outreach around the Park's future is organized by FOPS. Goal is to garner community consensus and leverage funding.

2022 Concept design for restoration of the public square begins, Grant applications to NYS/EPF in 2023 were successful.



1958 View of the fountain after a snow storm.

Image courtesy of the History Room of the Hudson Area Library



c. 1980 View of the Kiwanis fountain at night.

Image courtesy of the History Room of the Hudson Area Library

Hudson Public Square

EXISTING CONDITIONS



Hudson Public Square

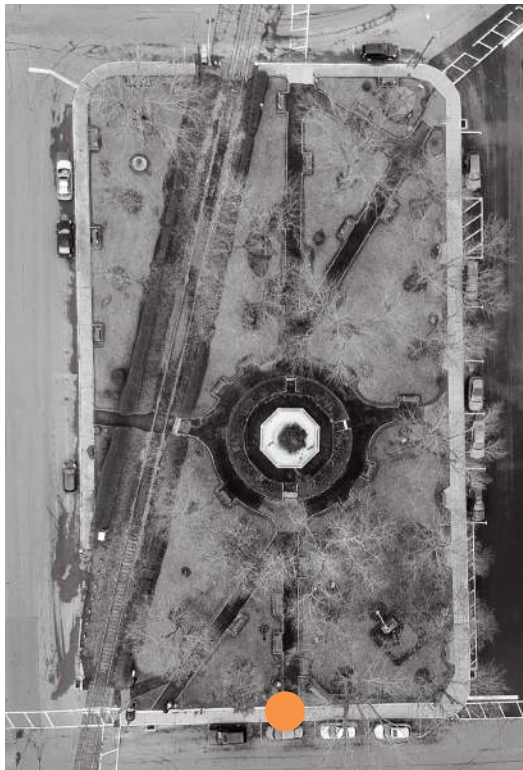
EXISTING CONDITIONS

Park Paths

- Not all entrances meet accessibility standards.
- Pavement is buckled from tree roots.
- Dark pavement contributes to urban heat island.



View looking northeast, 2023



Key Plan

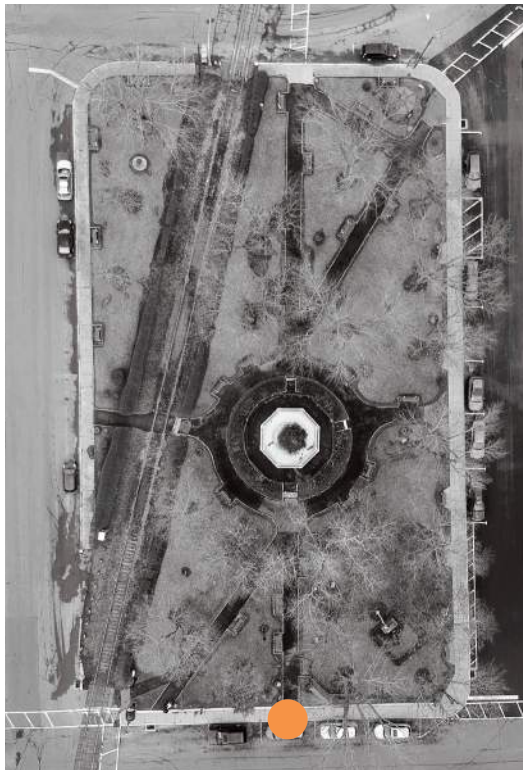


Hudson Public Square

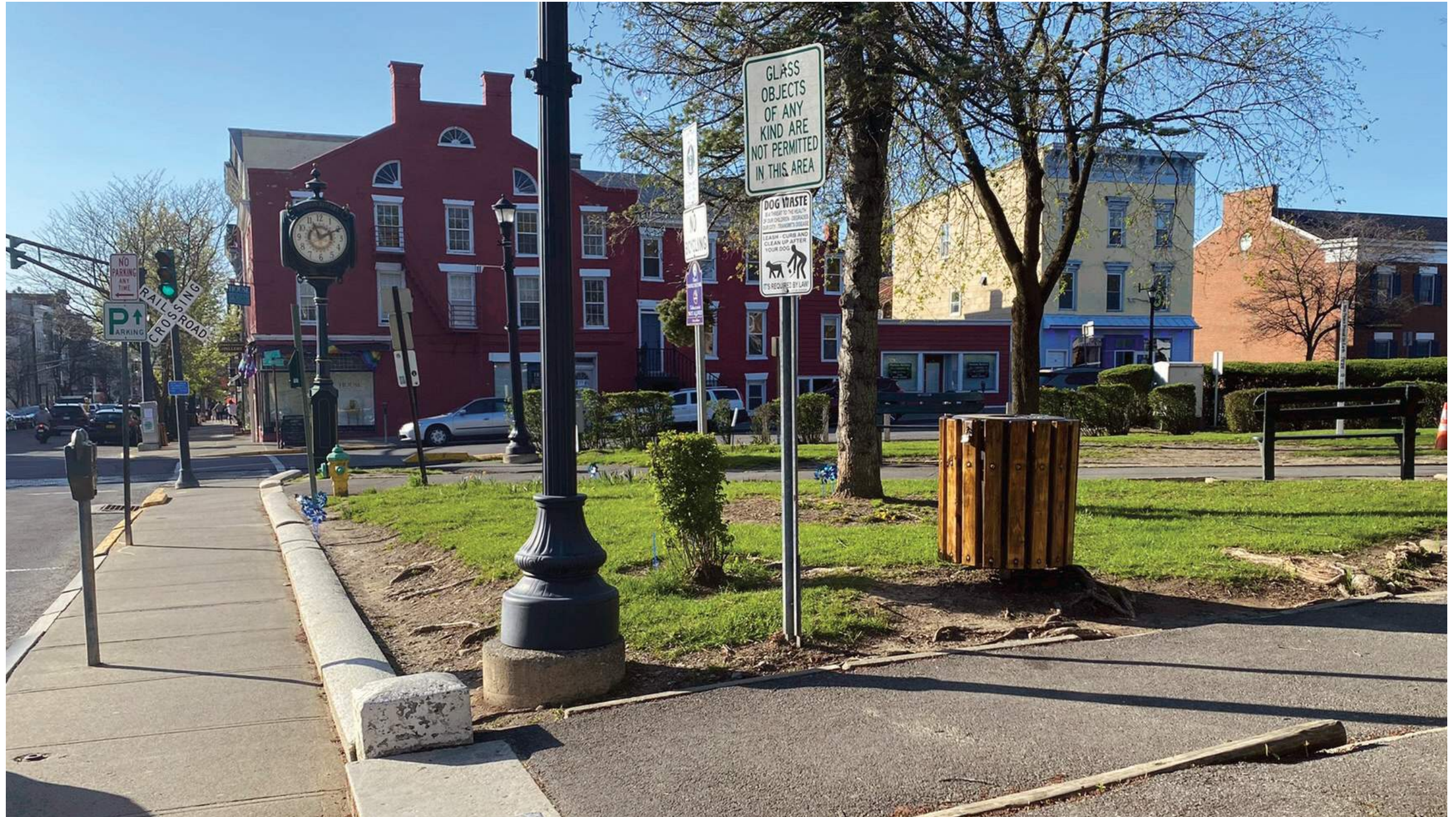
EXISTING CONDITIONS

Park Edges

- Remnants of granite border from early park design still exist.
- Sidewalk boundaries don't align with adjacent street grid.
- Not sufficient space for street trees.



Key Plan



View looking west along Warren Street, 2024

Hudson Public Square

EXISTING CONDITIONS

Fountain

- Fountain infrastructure is no longer functional.
- Concrete basin retains the same shape across time.



Key Plan



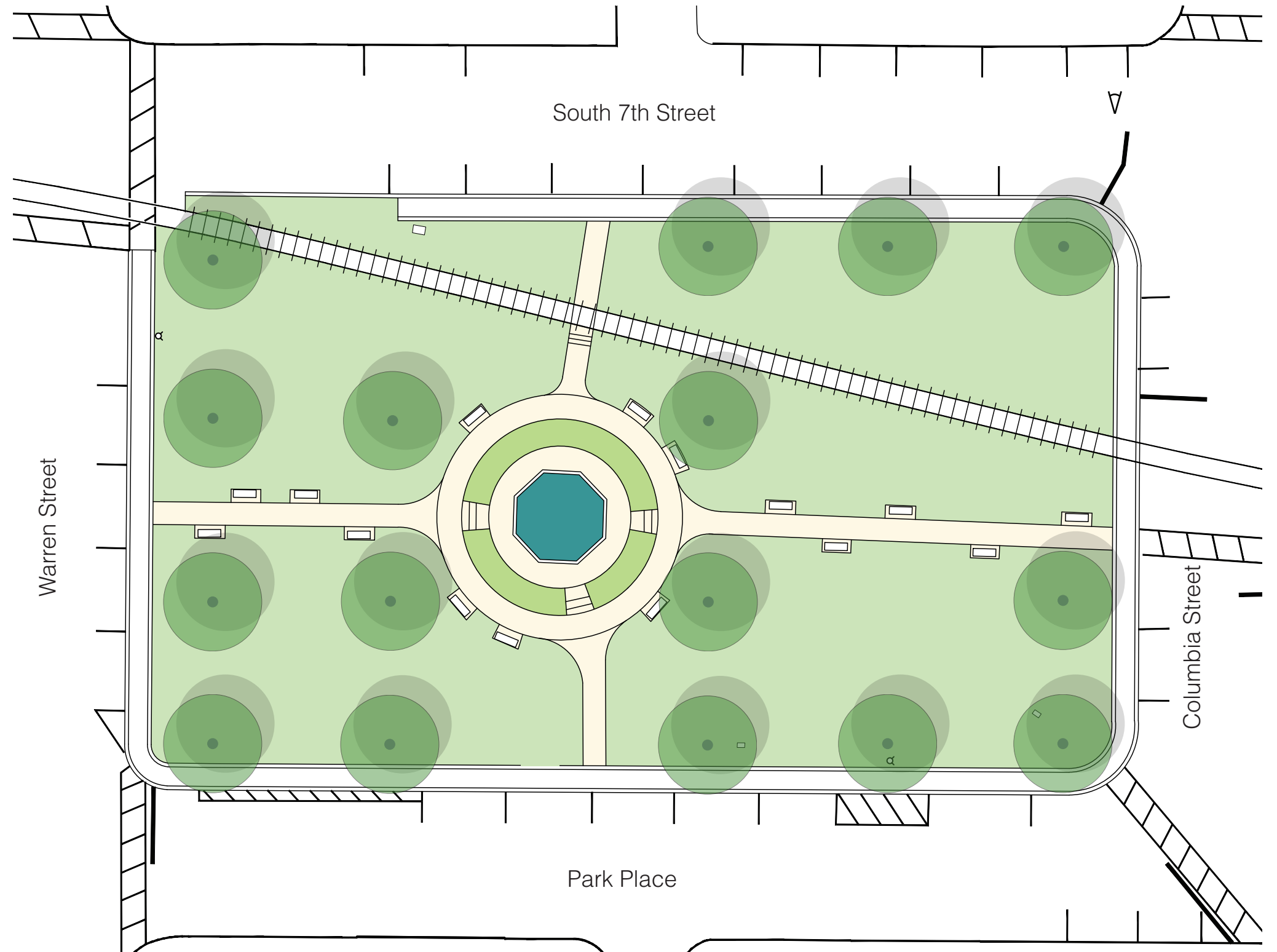
View of the existing fountain basin, 2024

Hudson Public Square

ORIGINAL PARK PLAN

1883

- Four axial paths lead to a circular path and lawn panels around a central fountain.
- The fountain is not in the center of the park presumably due to a large sewer line that runs under the ROW of the alleys.
- Wood and iron benches flank the paths.
- Canopy trees ring the park and line the paths.

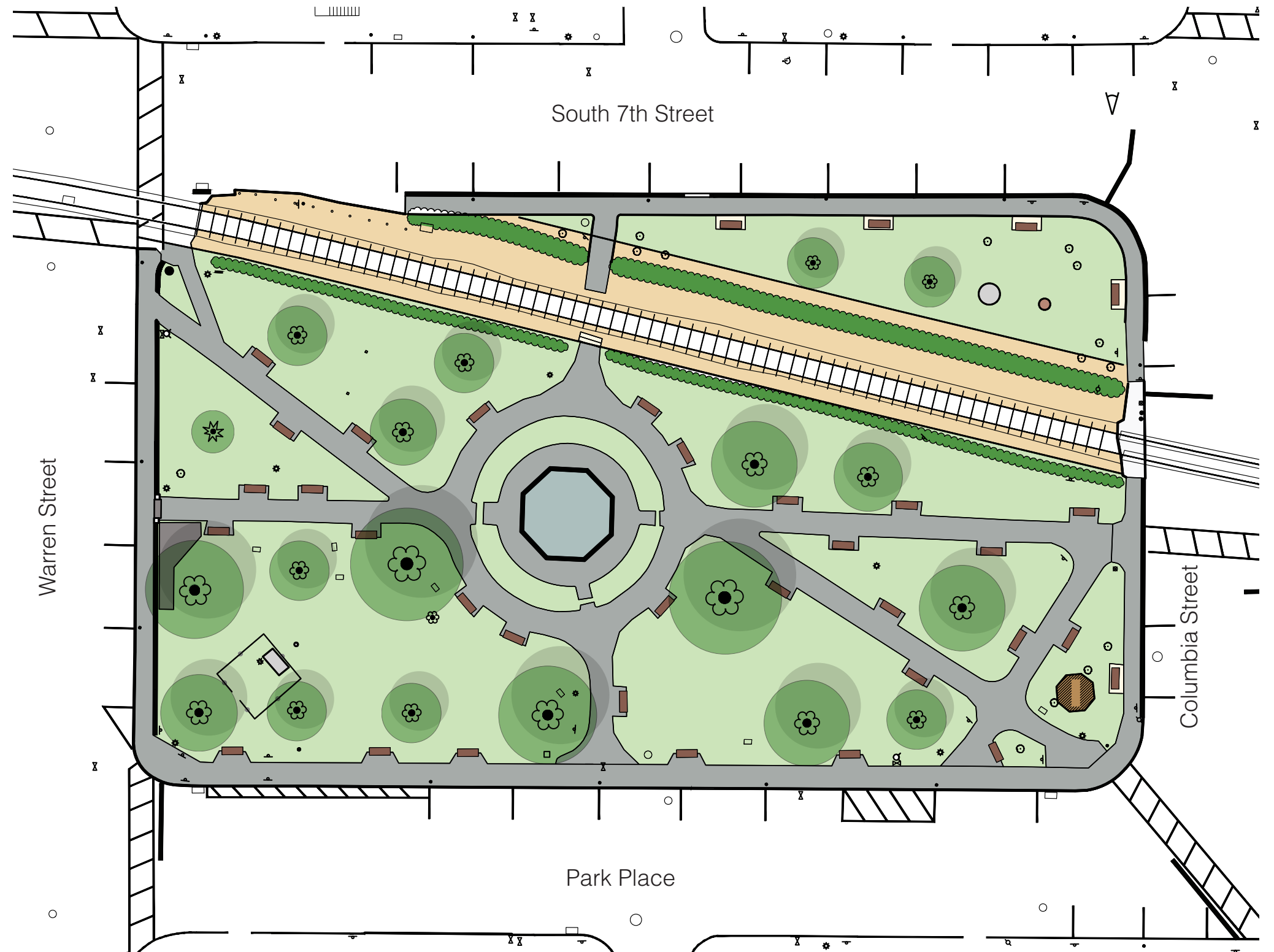


Hudson Public Square

EXISTING PARK PLAN

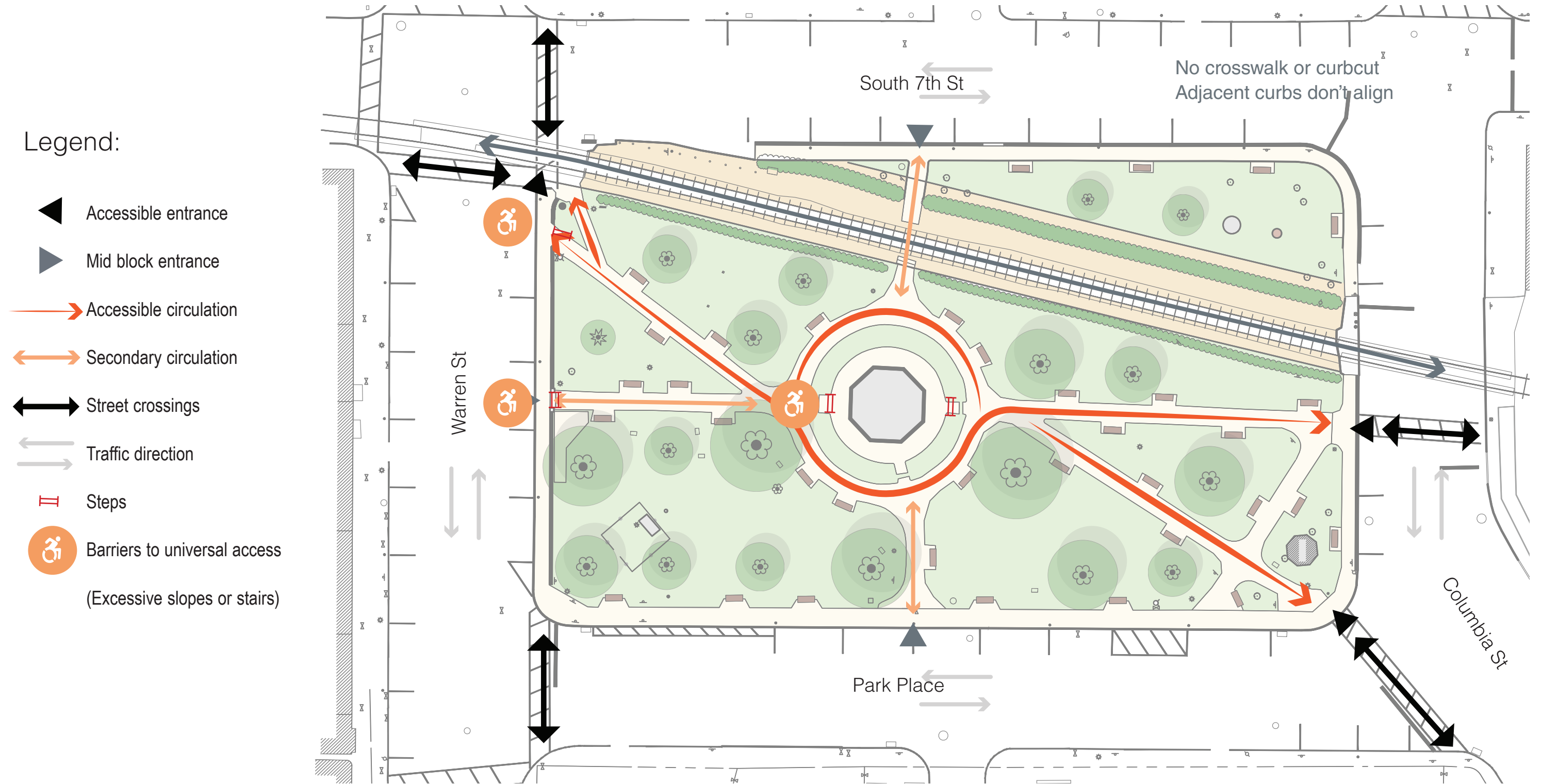
2024

- Additional diagonal paths were added in the 1960's renovation.
- Wood and iron benches were replaced with cast-in-place concrete and wood benches.
- Canopy trees were also planted in the 1960's to replace the original trees which were American Elms. Current trees in variable health.
- A gazebo that once sat at the corner of Columbia Street and Park Place was removed in 2023.



Hudson Public Square

EXISTING PARK PATHS & PEDESTRIAN FLOW



Caption: Image description

Hudson Public Square
PARK DESIGN

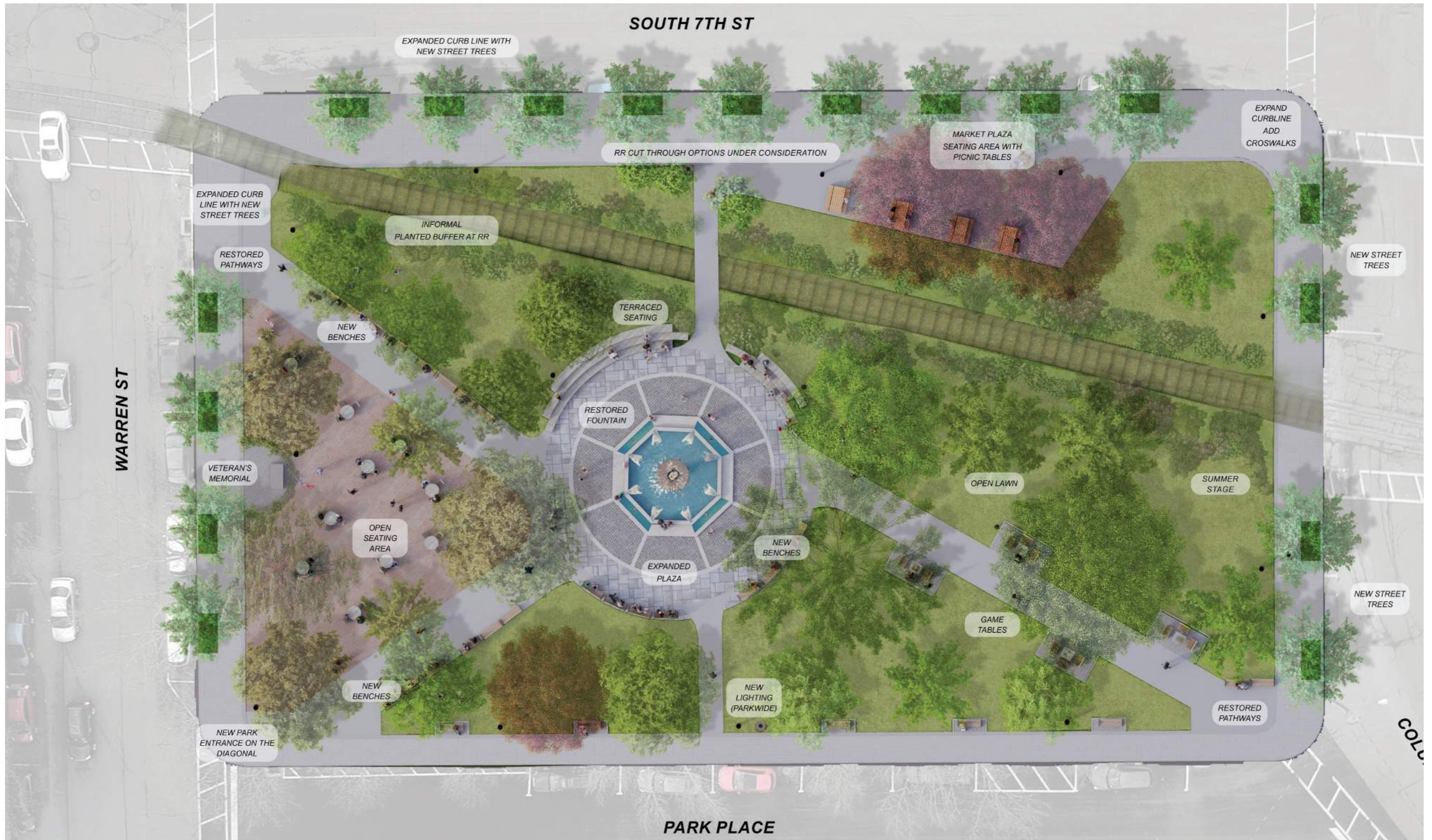


Hudson Public Square

PRELIMINARY CONCEPT PLAN

2022

- Axial design is retained but orientation of axis is rotated, acknowledging of pedestrian flow to adjacent intersections.
- Central fountain is proposed in the same location and with the same octagonal shape.
- A new open seating area is created facing Warren Street.
- An open flexible event lawn is created by removing the axial path on the north side.
- Park edges that don't align with the existing sidewalk edges are proposed for expansion.

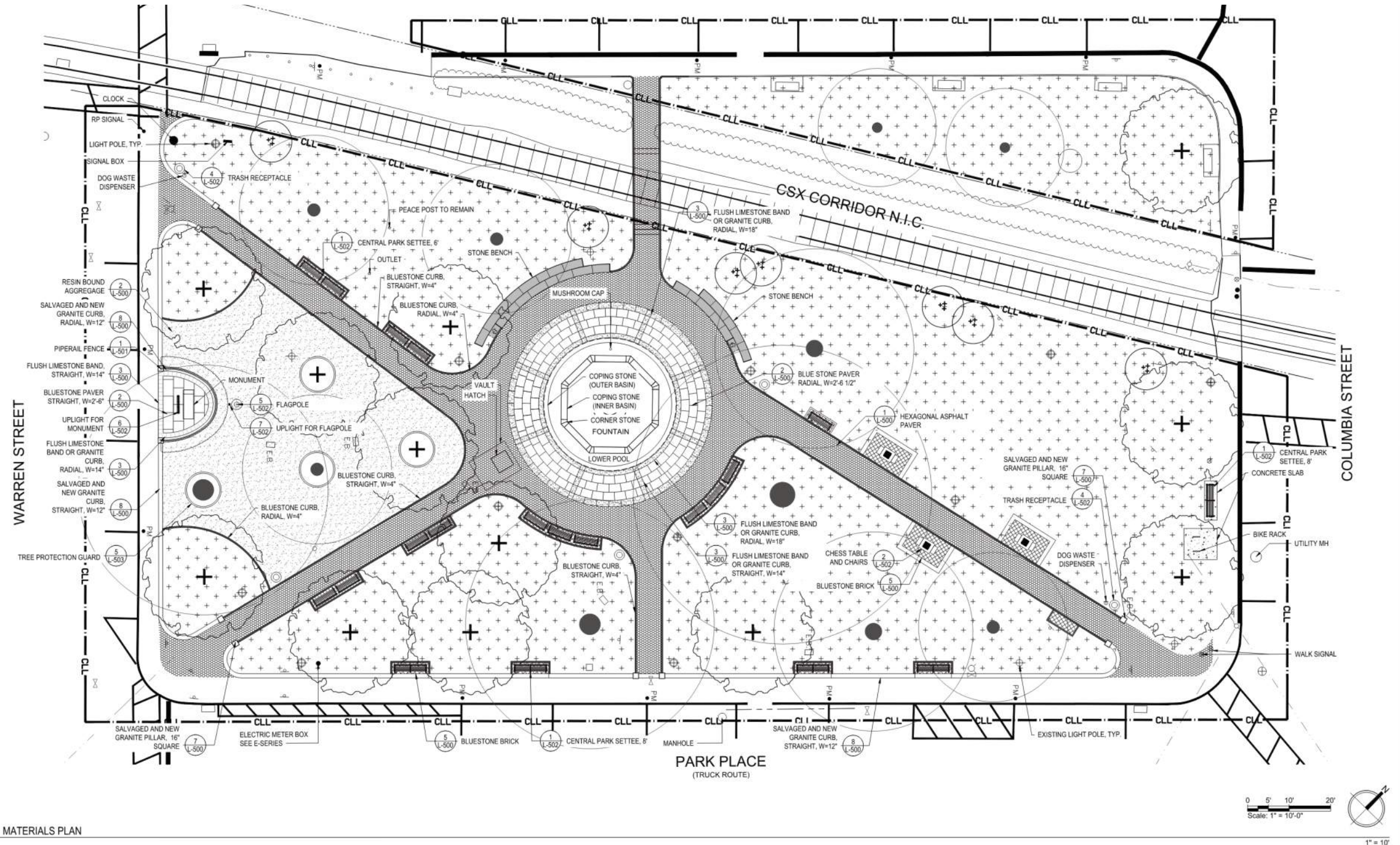


Hudson Public Square

CONSTRUCTION DOCUMENTATION

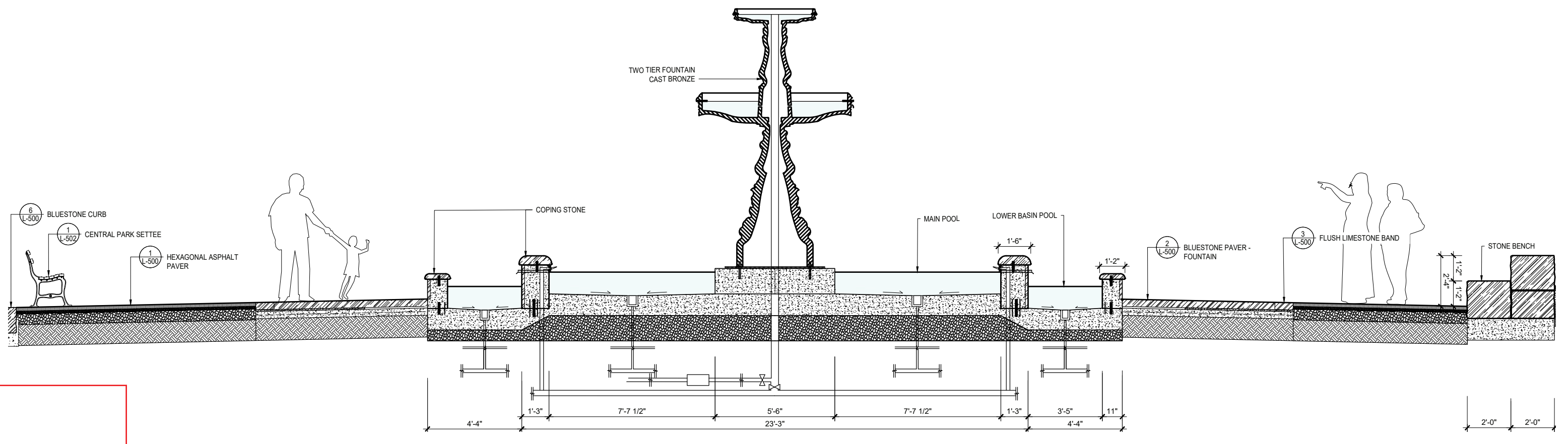
2024

- Second, lower basin is changed to a circular shape to better transition to the circular plaza.
- The historic curb is replaced with a new curb in the same configuration. Curb must be elevated on Warren Street to create ADA access and mitigate grade change from lawn.
- Open seating area to be bound aggregate instead of stone screenings for ease of maintenance and improved permeability.



Hudson Public Square

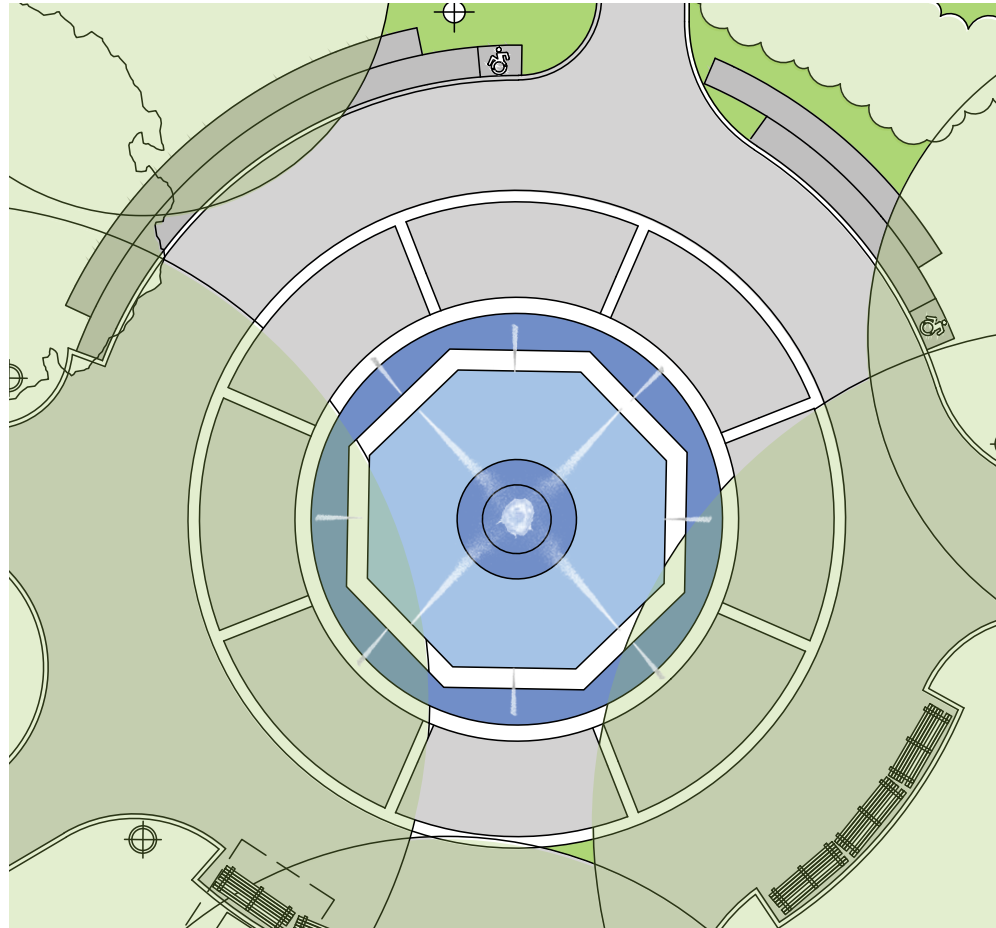
FOUNTAIN PLAZA CROSS-SECTION



Fountain cross-section, 2024.

Hudson Public Square

FOUNTAIN PLAZA PLAN DETAIL



2024

Plan detail of the fountain plaza



1946

Image courtesy of the History Room of the Hudson Area Library



Contemporary casting from foundry.

Hudson Public Square

FOUNTAIN PLAZA - VIEW LOOKING SOUTH



Hudson Public Square

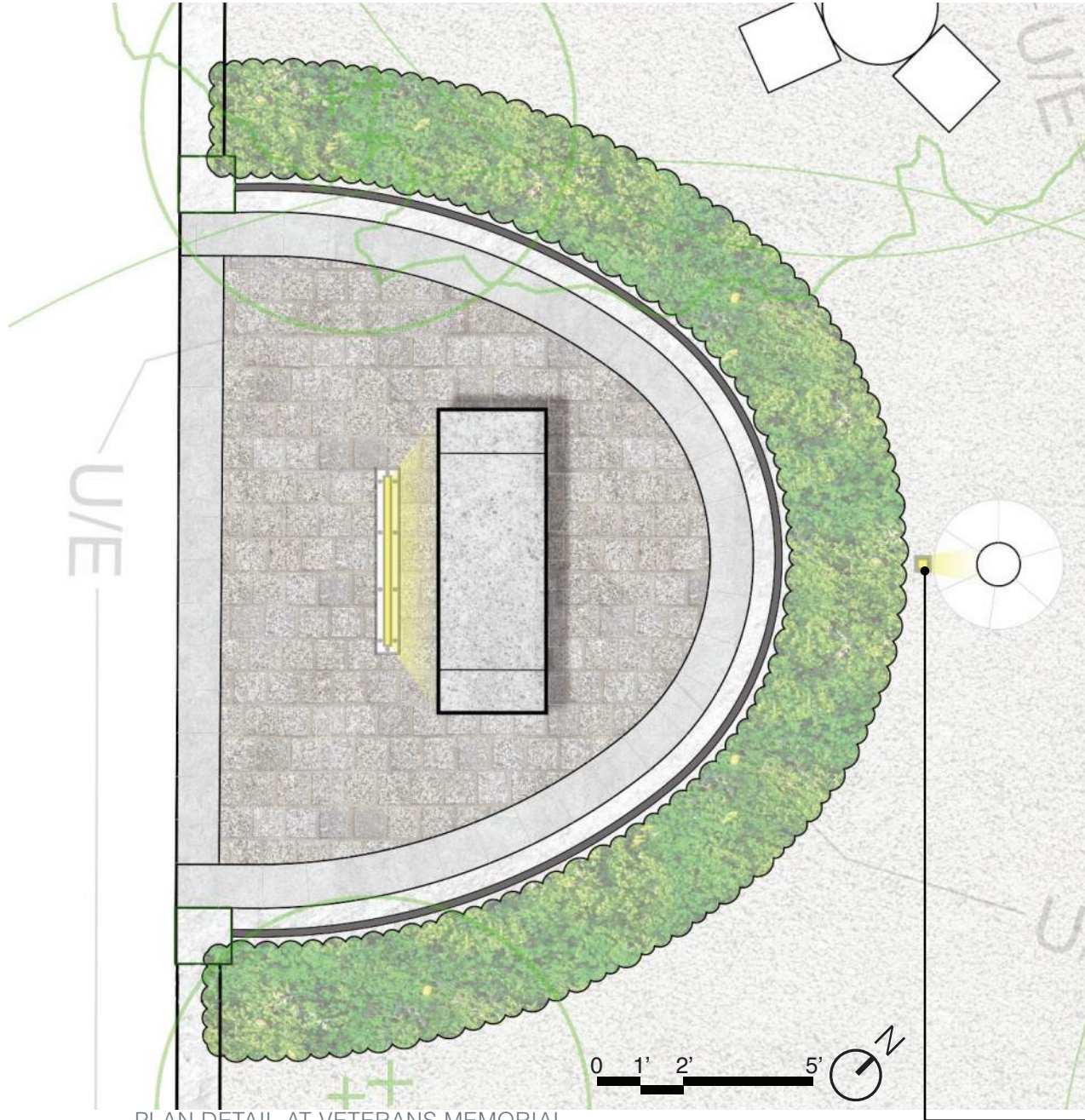
VETERANS MEMORIAL PLAN DETAIL



PIPE RAIL FENCE



WHITE ROSE - BLOOMS DURING MEMORIAL DAY



PLAN DETAIL AT VETERANS MEMORIAL



FLAGPOLE WITH UPLIGHT

Hudson Public Square

VETERANS MEMORIAL VIEW NORTH



Hudson Public Square

TREE ASSESSMENT & PLANTING



Hudson Public Square

TREE ASSESSMENT - CRITERIA FOR REMOVAL

When determining which trees to remove, the design team assessed the trees based on the following criteria:

- PS** **Public Safety:** Public safety was *the* top priority when determining the future prognosis for all trees. In the instances where people, could be injured, property damaged or activities disrupted by a tree's condition, the design team recommends these trees be removed.
- TH** **Tree Health:** While some trees do not pose a direct threat to safety, they are in marginal health. When considering the anticipated lifetime of the square, the design team determined on a case by case base replacing come unhealthy trees with new, healthy ones will serve the people of Hudson for years to come.
- CI** **Construction Impacts:** A small proportion of trees were determined as interfering with the goals of improving park circulation and enhancing park programming; fundamental to the public square's rejuvenation. For every tree impacted by construction, another tree will be planted.
- PA** **Park Accessibility:** In order to create accessibility for all individuals across the square, pathways must be regraded and paved with ADA-compliant surfaces and slopes. Through this process, certain trees will be negatively impacted and proactively removed.

Hudson Public Square

EVALUATION OF TREES TO BE REMOVED



1 Norway Maple



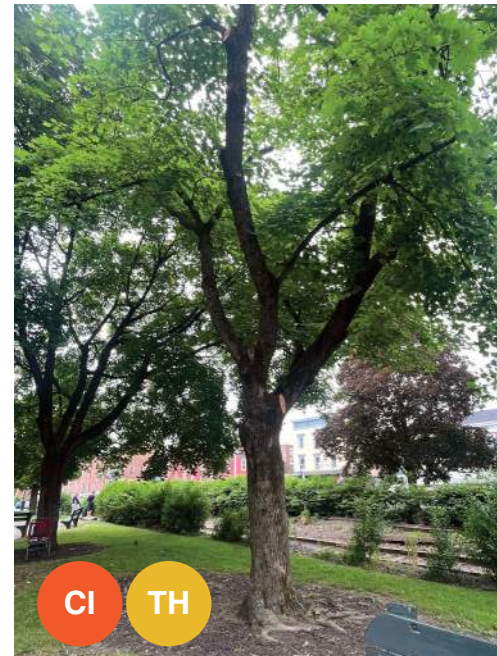
2 Silver Maple:



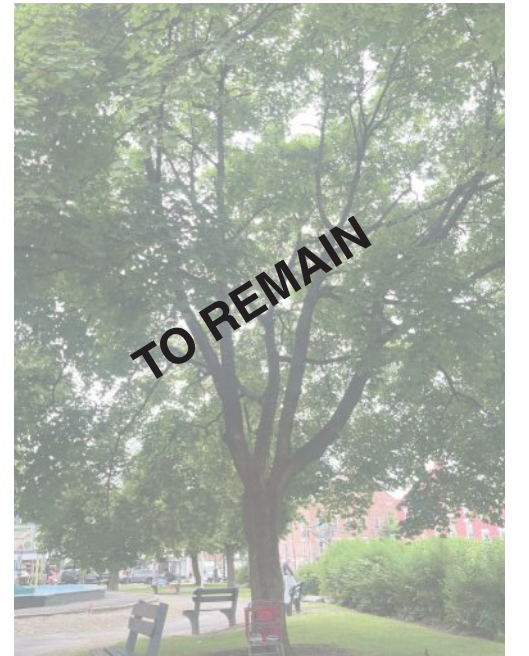
3 Silver Maple



4 Silver Maple



5 Norway Maple: TO BE REMOVED



6 Norway Maple



Existing Conditions

CRITERIA FOR REMOVAL:

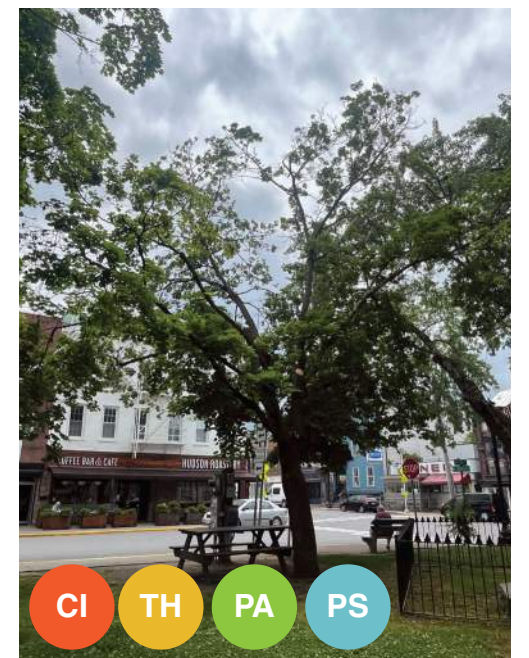
- PS PUBLIC SAFETY
- TH TREE HEALTH
- CI CONSTRUCTION IMPACTS
- PA ACCESSIBILITY



7 Silver Maple



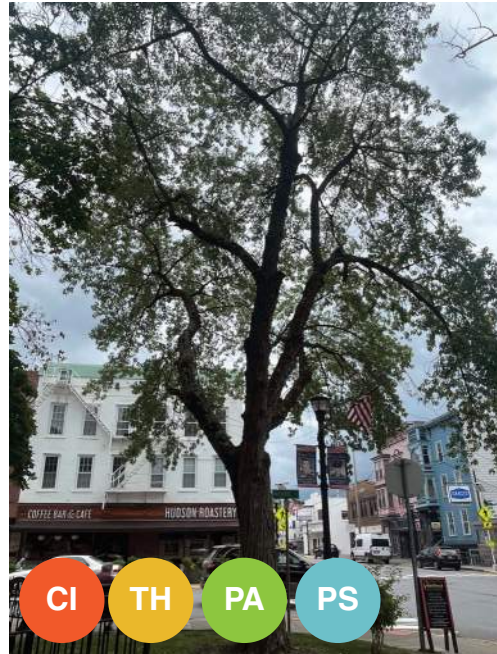
8 Norway Maple: Requires further evaluation and pruning



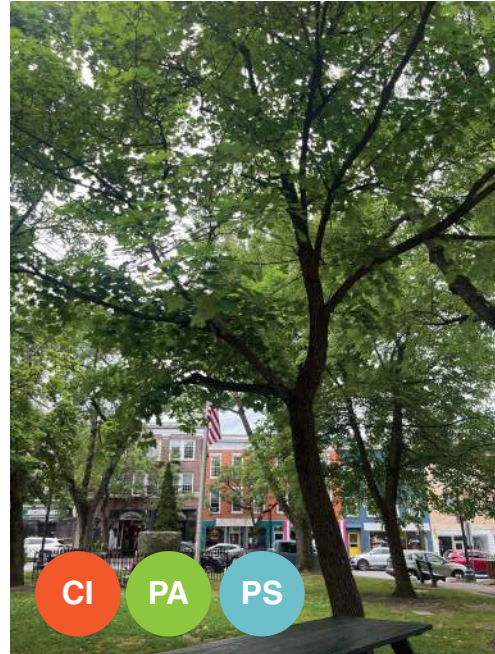
9 Norway Maple: TO BE REMOVED

Hudson Public Square

EVALUATION OF TREES TO BE REMOVED



10 Silver Maple: TO BE REMOVED



11 Maple: TO BE REMOVED



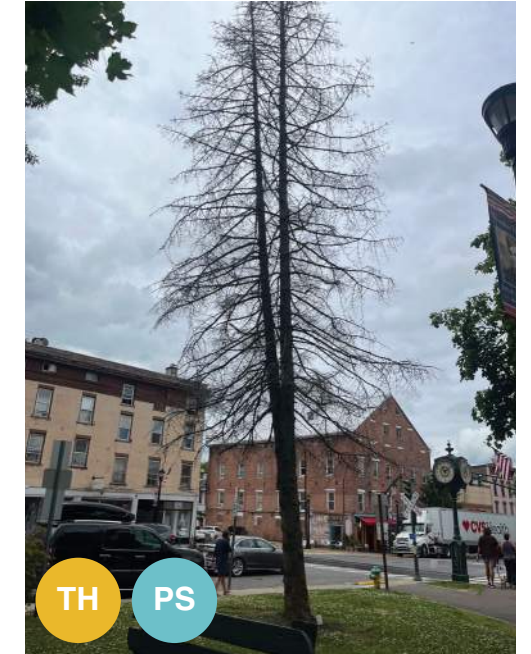
12 Silver Maple: TO BE REMOVED



13 Maple



14 Silver Maple: Some crown die out?



15 Blue Spruce dead (REMOVED)



CRITERIA FOR REMOVAL:

- PS PUBLIC SAFETY
- TH TREE HEALTH
- CI CONSTRUCTION IMPACTS
- PA ACCESSIBILITY



16 Norway Maple



17 Norway Maple (REMOVED)



18 Crimson King Norway Maple



Hudson Public Square

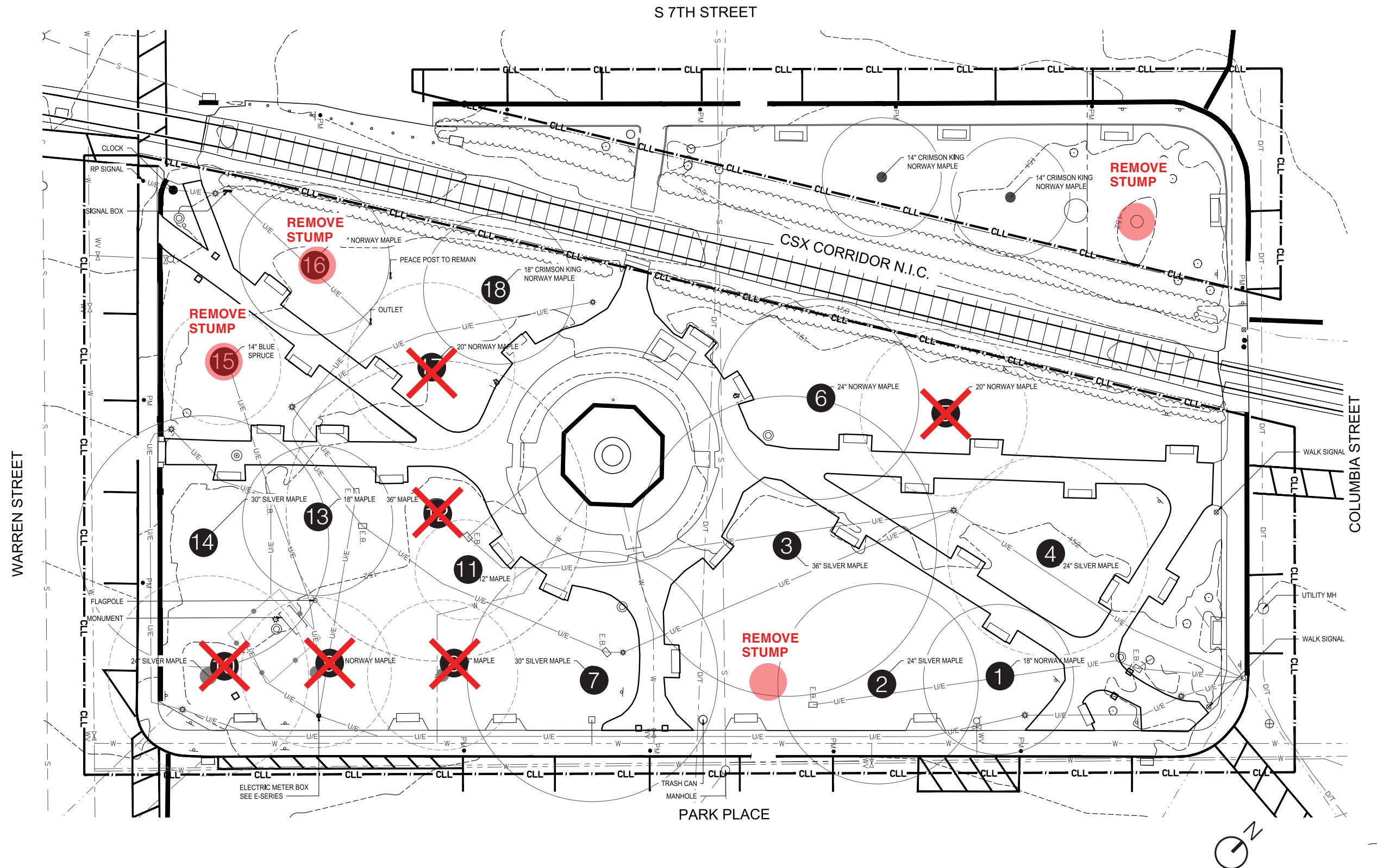
TREE REMOVALS PLAN

Tree Canopy

- Numerous trees with crown die out.
- Heavy clay soils have cause superficial root growth.
- Several trees have been lost over the last few years and no new trees have been planted.

Legend

-  Trees to be removed
-  Stump to be removed



Hudson Public Square

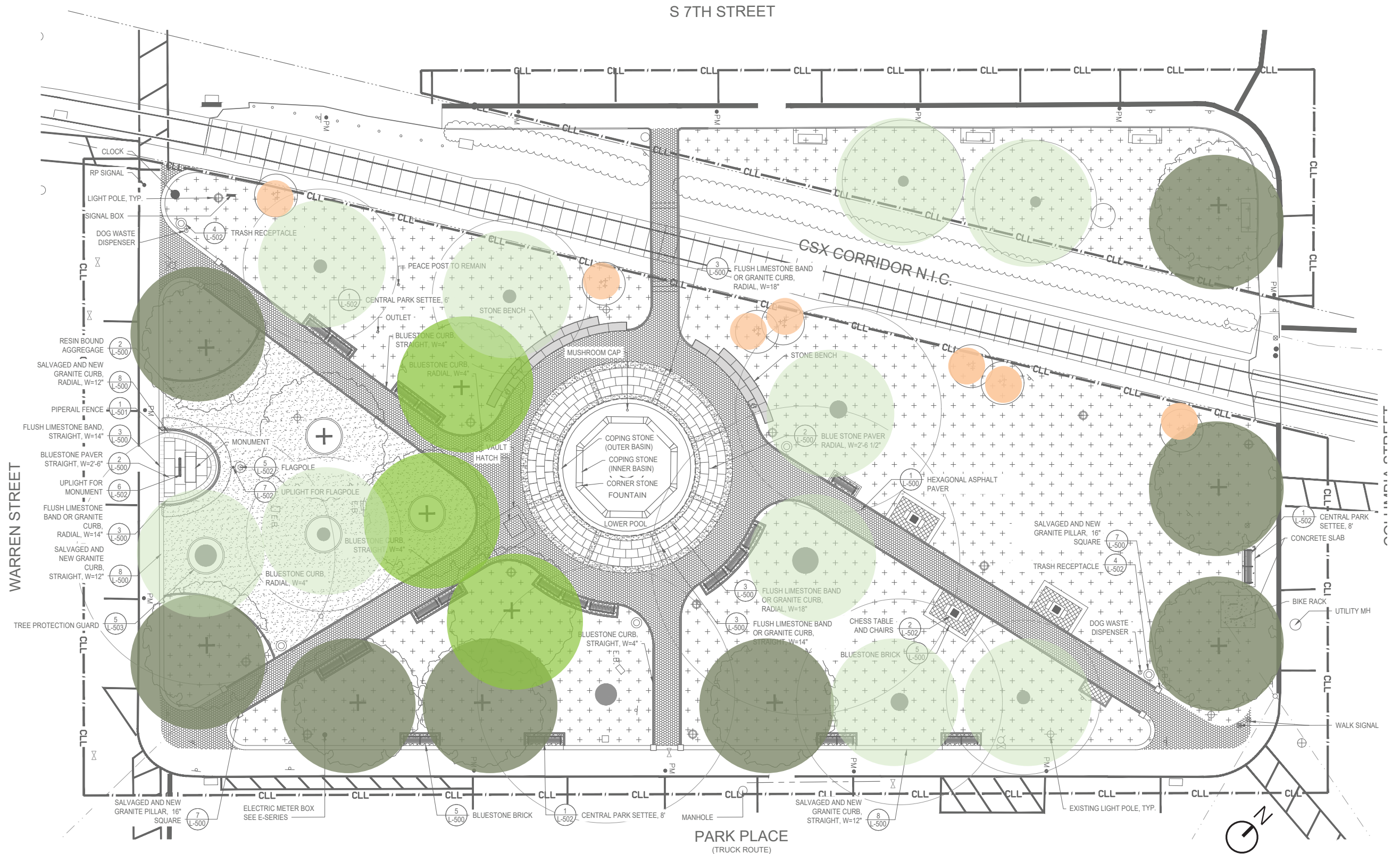
TREE PLANTING PLAN

Tree Canopy

- Prune all existing trees to remain. Aerate and amend root zones.
- Remove trees with compromised crowns or branching structure.
- Remove stumps to 3' below grade to allow for placement of new soils.
- Install 11 new canopy trees and 7 new understory trees.

Legend:

-  Trees to Remain
-  Willow or Red Oak
-  Red Maple
-  Amelanchier



Hudson Public Square

PROPOSED TREES



CONOPY TREE PERIMETER - *Quercus phellos*, Willow Oak



CANOPY TREE INTERIOR - *Acer rubrum*, Red Maple



UNDERSTORY TREE CSX Buffer - *Amelanchier canadensis*, Shad Bush

Hudson Public Square

SITE FURNISHINGS & MATERIALS



Hudson Public Square

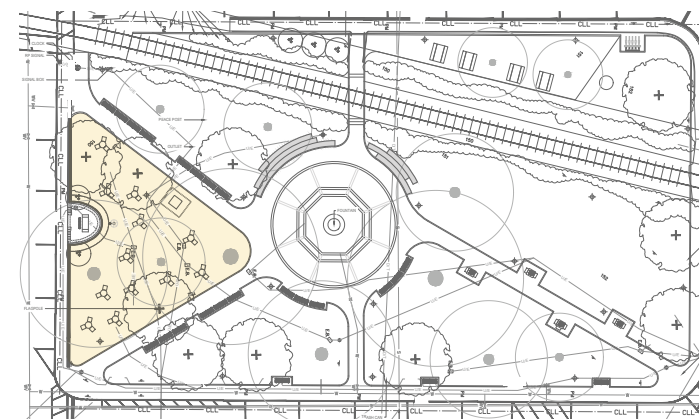
PAVING MATERIALS



BLUESTONE CURB - 4" WIDE FLUSH BORDER TO PATH



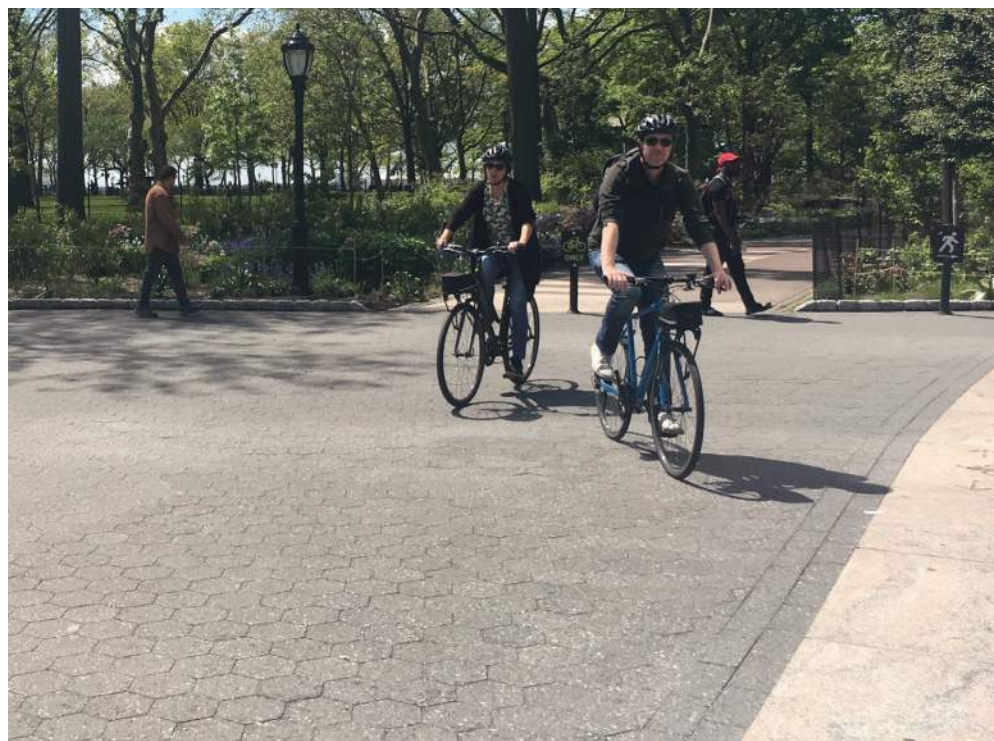
BOUND AGGREGATE (OPEN SEATING AREA ONLY)



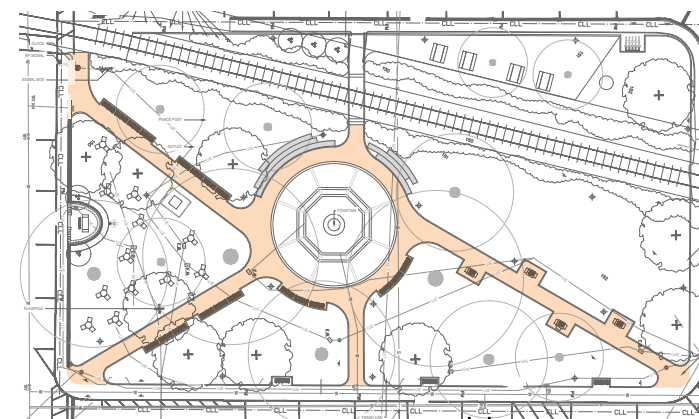
KEY PLAN



ASPHALTIC HEXAGONAL BLOCK COLOR MATRIX - GREEN AGGREGATE



ASPHALTIC HEXAGONAL BLOCK TEXTURE



KEY PLAN

Hudson Public Square

FOUNTAIN & PLAZA MATERIALS



Alcovite bluestone, full color range, radial cut (at fountain plaza)



Vermont Marble (Inner fountain coping)



Croton Grey Granite (Lower fountain coping & Walls)



Onondaga limestone, flush bands (at fountain plaza)



Stone block seating (western side of fountain plaza) Onondaga Limestone

Hudson Public Square

SITE FURNISHINGS



Central Park Settee bench with Kebony Slats



Bike rack



Trash receptacles



Pipe rail fence proposed for at Veterans Memorial - Warren Street



Chess tables and benches

Hudson Public Square

SITE PLAN 2024



Hudson Public Square

FOUNTAIN PLAZA - BIRD'S EYE VIEW





THANK YOU!