

STARR WHITEHOUSE

Landscape Architects
and Planners PLLC

Charles Williams Park

Schematic Design Development

December 11, 2023



PROJECT SCHEDULE

[illegible]

MAY	JUNE	JULY	AUGUST	SEPTEMBER	OCTOBER	NOVEMBER	DECEMBER	JANUARY	FEBRUARY	MARCH	
& AWARD CONTRACT	TASK 2 - CONSTRUCTION										
		CONSTRUCTION									
									TASK 3 - CLOSE OUT		
									INSPECTION & CLOSE OUT		
											COMPLETION

Charles Williams Park

01 NEIGHBORHOOD CONNECTIVITY PLAN



View north looking towards Charles Williams Park from the 3rd Street Right-Of-Way

Charles Williams Park

NEIGHBORHOOD CONNECTIVITY PLAN

Existing Open Space

- Park parcel is a total of 12.3 acres of which only 2.5 acres are developed for public use
- Property is contiguous with multiple publically owned parcels

Connectivity Plan Goals

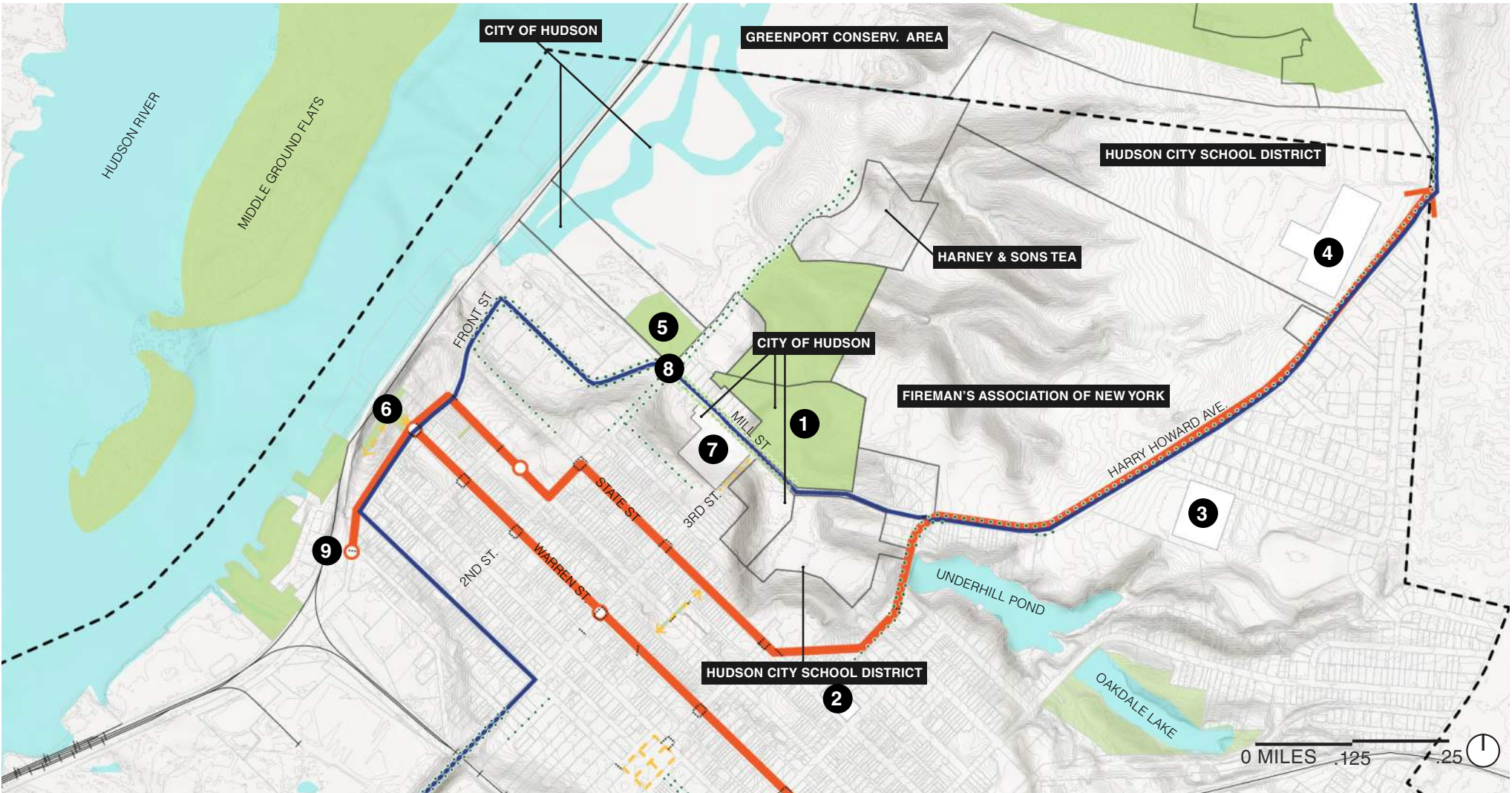
- Increase trail and path connections to the broader neighborhood, especially the Henry Hudson High School and the Greenport Conservation Area
- Explore neighborhood scale loops
- Infiltrate stormwater, improve drainage
- Increase biodiversity
- Enhance access to park's existing natural systems
- Improve neighborhood streetscape
- Explore pedestrian scale improvements such as new sidewalks, street trees and lighting



Open space context showing multiple public open spaces adjacent to Charles Williams Park.

Charles Williams Park

OPEN SPACE ANALYSIS



EXISTING

- Pedestrian Routes
- ROW Easement
- Crosswalks
- Bus Route
- Bus Stop
- Empire State Trail
- No Sidewalks
- Railroad
- Key Tax Parcels
- OWNER** Tax Parcel Owner
- Parkland
- Water body
- Hudson City Limit

NEIGHBORHOOD RESOURCES

01. Charles Williams Park
02. Hudson Area Library
03. Montgomery C. Smith Elementary School
04. Hudson Sr. High School
05. Hudson Dog Run
06. Promenade Hill Park
07. Mill St Development
08. Empire State Trail head
09. Hudson Amtrak Station

Tucked away at the foot of Mill Street, Charles Williams Park could function as a gateway to nearby North Bay Recreation and Natural Area thereby strengthening the connection between the city of Hudson and adjacent natural resources. Neighboring schools will benefit from park renovation and improved connectivity as students and citizens of Hudson are provided

with more opportunities for active recreation with safe pedestrian and bicycle access from the residential streets which lead to the park.

The future Mill Street Development further embeds the urban grid into the northern portion of the city, providing opportunities to utilize Charles Williams Park as a key neighborhood and citywide resource.

Charles Williams Park

FEMA 100-YEAR FLOODPLAIN

Flood Risk

- The park is above the 100-year flood plan
- The park does have low areas at the bottom of the slopes that are seasonally supersaturated
- There are no existing storm drains within the park property
- There are a series of existing swales which direct water from the toe of the slopes into the natural drainage corridor which leads to the North Bay Wetlands via above and below ground channels.



Storm water connection exists across from the park at the foot of the North 3rd Street ROW



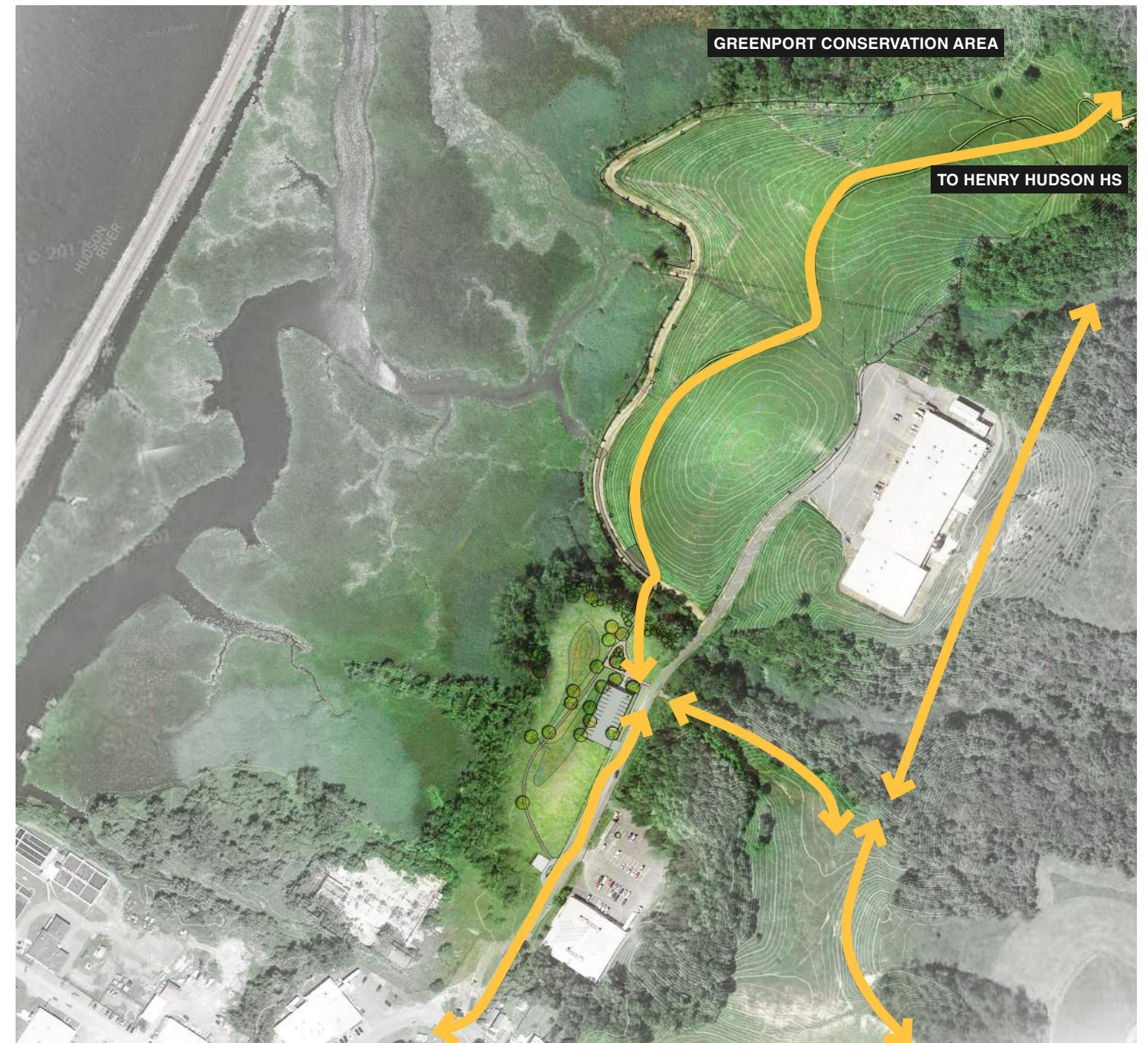
FEMA Floodplain Map: Image courtesy of Columbia County Parcel viewer, <https://columbia.sdgny.com/search.aspx>

Charles Williams Park

OPEN SPACE CONNECTIONS

North Bay Trail Connector

- Charles Williams Park could have direct trail access to the proposed North Bay Trail Connector
- A trailhead parking area is proposed on the west side of North Second Street which would lead to a pedestrian bridge crossing the existing stream - keeping pedestrians out of the road, which is narrow, doesn't have sidewalks and has truck traffic coming from the commercial business during the day.
- The North Bay trail would link Charles Williams Park to both the Greenport Conservation area and the Henry Hudson High School



Hudson North Bay Connector Trail: Concept Plan

Charles Williams Park

ADJACENT NATURAL AREAS - NORTH BAY MASTER PLAN

North Bay to Greenport Connection

- Former North Bay Plan on hold until Landfill leachate areas at toe of slope are mitigated.
- Connections to Charles Williams Park already existing informally and could be improved through this project as well as in partnership with the Columbia Land Conservancy.
- Short-term improvements are possible through with minimal intervention and are being considered



Master Plan for North Bay prepared by the Columbia Land Conservancy

Charles Williams Park

TRAIL CONNECTIVITY & EXISTING STREETScape



View up the hill to Charles Williams Park



View west to the future North Bay trailhead

Charles Williams Park

EXISTING STREETScape



View west along Mill Street - note the lack of sidewalks and street trees



View south along North 2nd Street - currently the main pedestrian connection

Charles Williams Park

TRAIL CONNECTIVITY & EXISTING STREETScape



Running club using the Empire State Trail where it meets Charles Williams Park



3rd Street right of way - potential pedestrian connection directly to Charles Williams Park

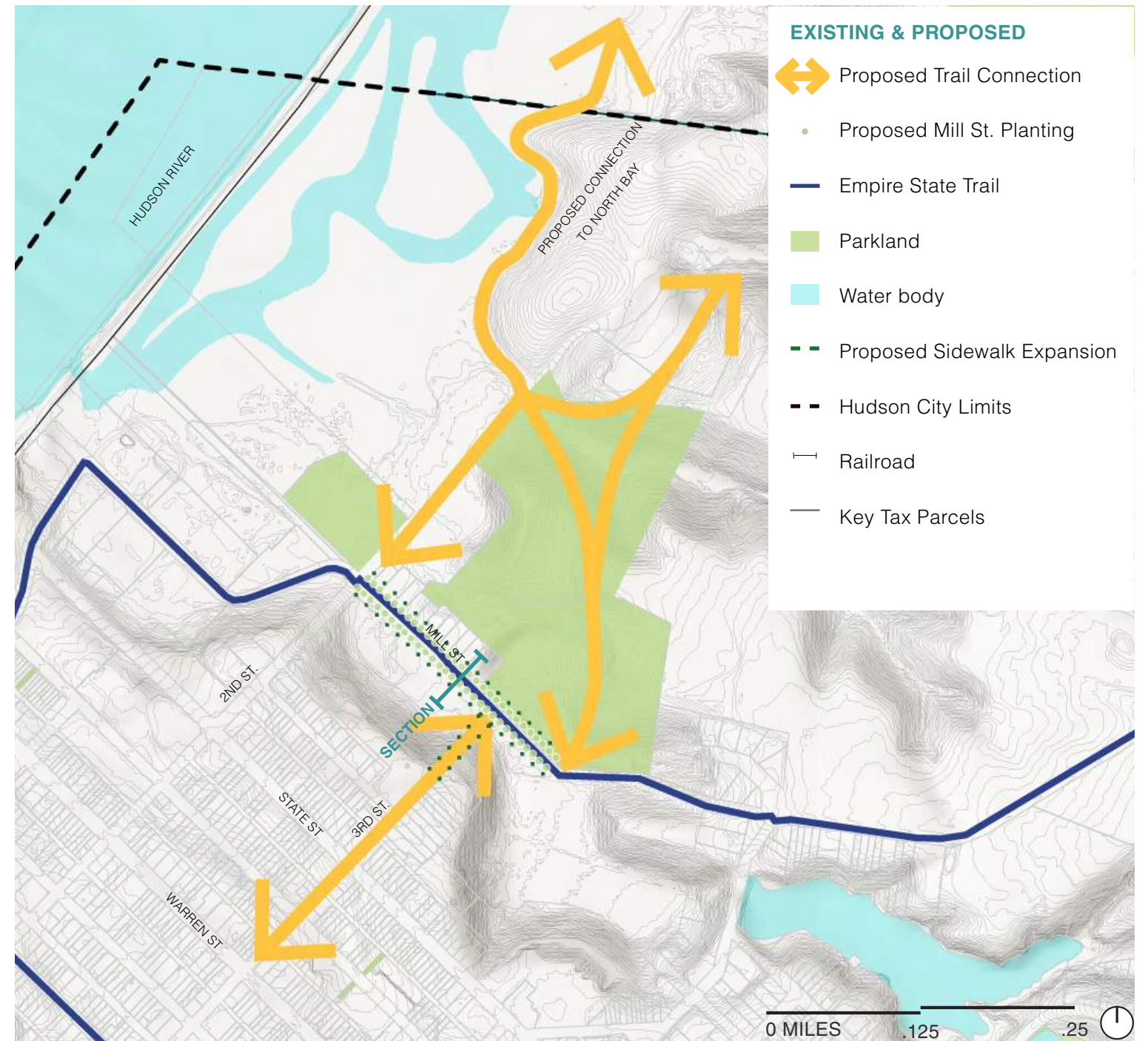
Charles Williams Park

NEIGHBORHOOD CONNECTIVITY PLAN

Key Takeaways

Connections to adjacent open spaces, Henry Hudson High School and the Greenport Conservation area can be made through incremental improvements to both the streetscape and path system through the park and undeveloped natural areas.

- **Install sidewalks on North Second and Mill Street. Add street trees and lighting where possible.**
- **Improve trail connection to North Second Street with grading of the route and changes in the mowing regime**
- **Anticipate future North Bay trail network through the Charles Williams Park - Partner with the Columbia Land Conservancy on trail alignment**
- **Connect more directly to the Empire State Trail**
- **Explore a long-term connection to North 3rd Street**

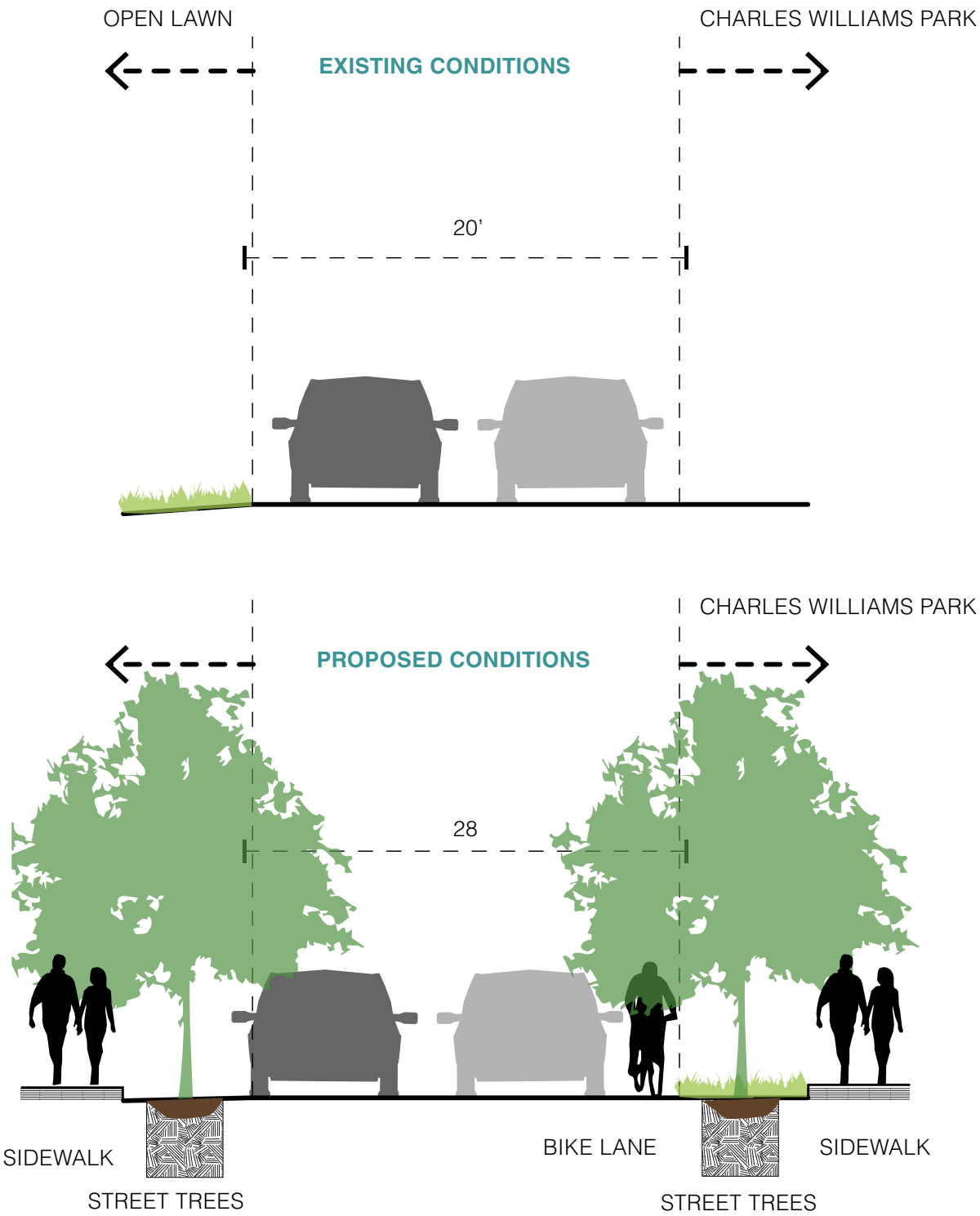


Charles Williams Park

NEIGHBORHOOD CONNECTIVITY PLAN



View east along Mill Street - note the lack of sidewalks, pedestrian lighting and street trees



Charles Williams Park

SUB HEADER

01 SITE DESIGN



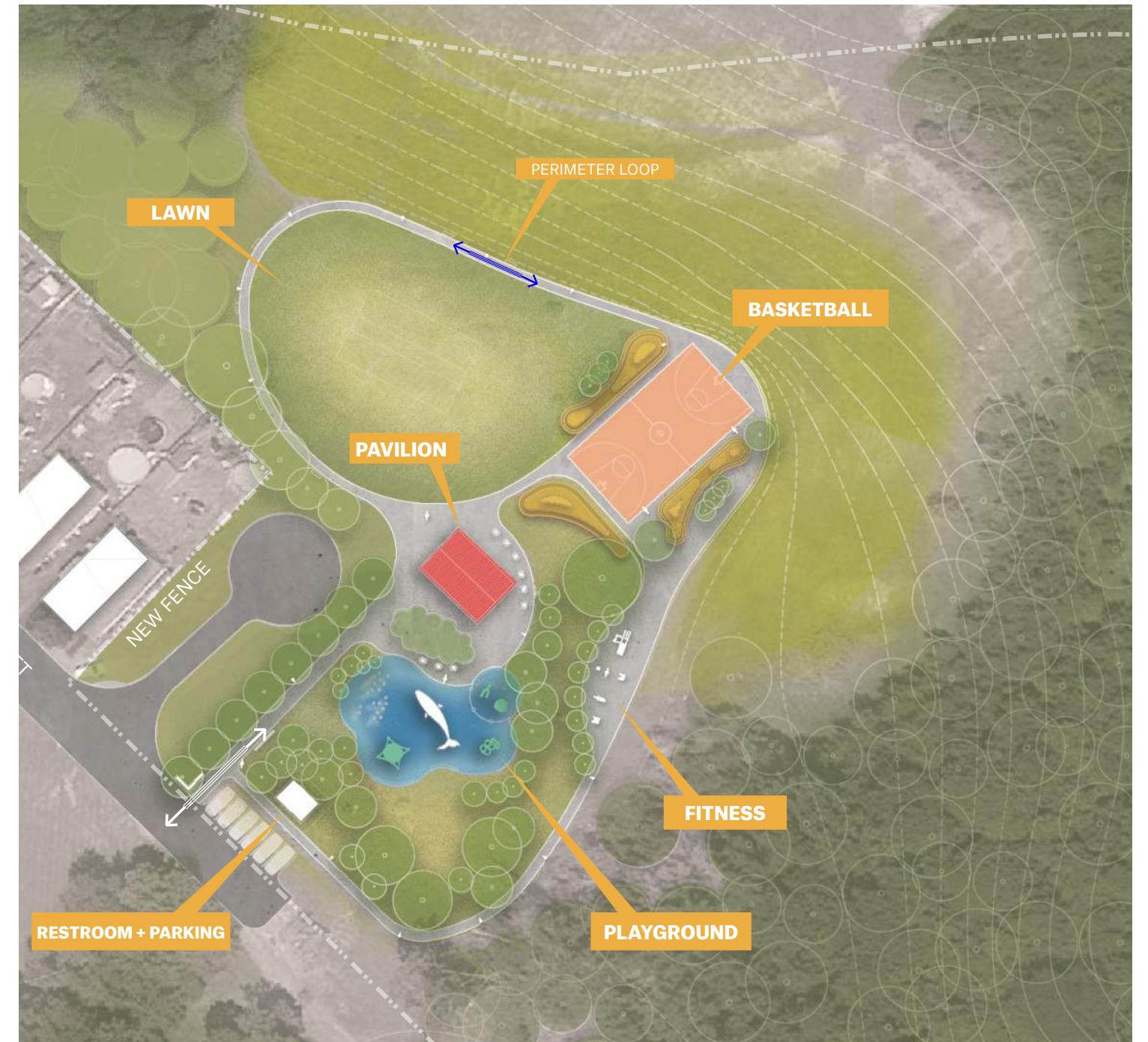
Charles Williams Park

2022 CONCEPT PLAN

Design Priorities

Based on Community Outreach 2022-2023

- Play Area with Nature Play & Water Feature
- Provide Universal Accessibility to all program areas
- Fitness Stations - Outdoor Exercise Equipment
- Basketball Court
- Field Sports - Flexible use lawn area
- Increased Connectivity - Walking Loops
- Plantings - New tree canopy & green infrastructure
- Public Restroom



2022 Concept Plan for Charles Williams Park

Charles Williams Park

2023 TOPOGRAPHIC SURVEY



Existing conditions from topographic survey, October 2023, Survey provides 1' contours and the precise location of existing utilities, trees and structures.

Charles Williams Park

SITE INVESTIGATION - SOILS & DRAINAGE



Existing soils bottom of slope west side of playground



Existing soils - upper slopes

Charles Williams Park

EXISTING LAWN AREA AND PAVILION



Existing conditions view north 2023



Existing conditions - park pavilion - view east 2023

Charles Williams Park

EXISTING PLAY AREA



Existing conditions view north 2023

Charles Williams Park

UPPER OPEN UNDEVELOPED AREA



Existing open area above the existing field is relatively flat and free of trees, this area could support future expanded park programming



Charles Williams Park

2023 CONCEPT PLAN

Program Zones

- Expand the areas of use beyond the current 2.5 acre footprint to 8 acres of 12.3 acre park.
- Forge new connections between Charles Williams Park and Henry Hudson High School as well as neighboring streets and open spaces.
- Expand programming based on community input.

OPEN MULTI-USE FIELD

Large flexible use lawn area for both summer and winter sports, Cricket, Soccer, etc.

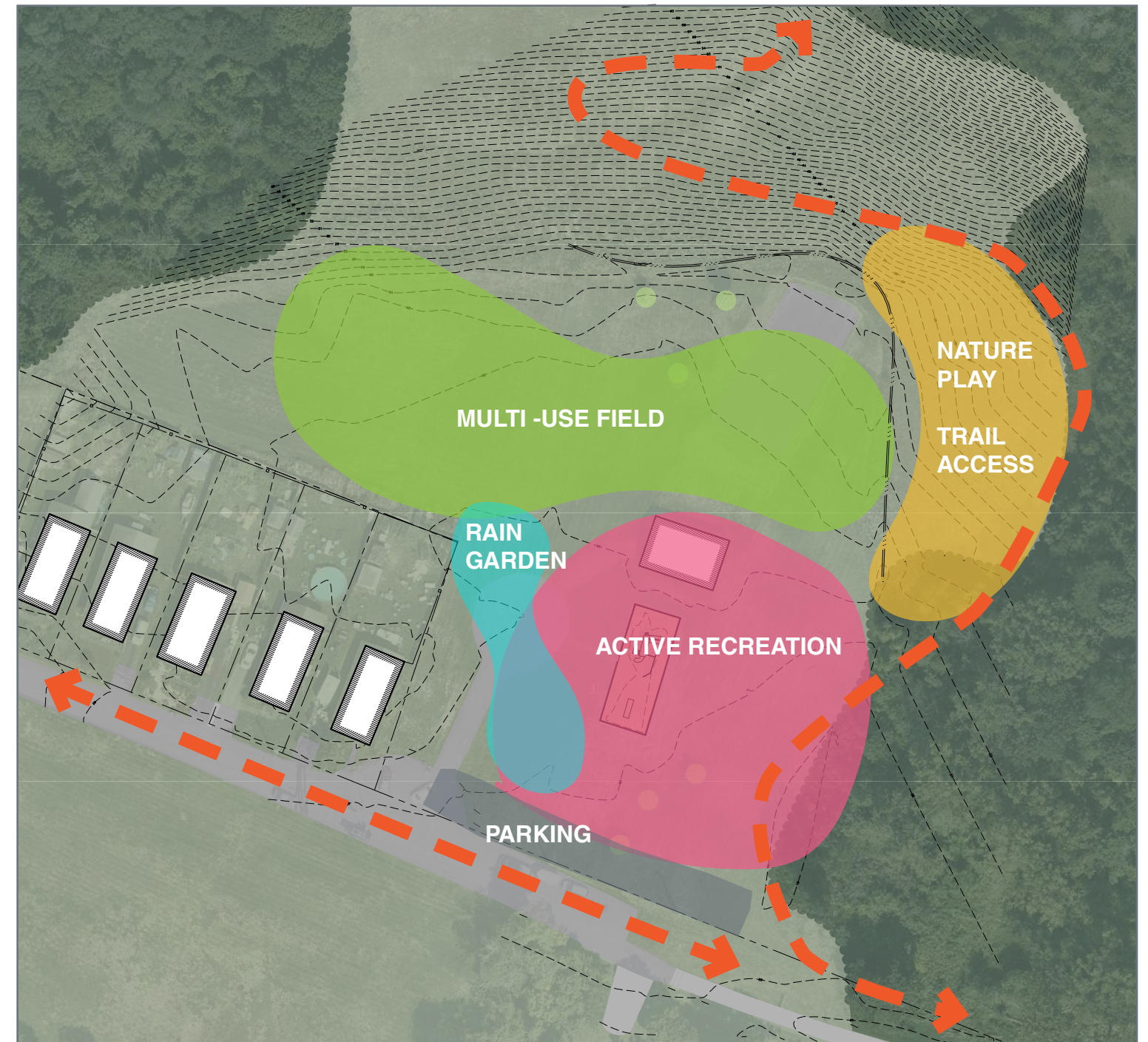
Possible pop up programming such as ice skating and sledding.

ACTIVE RECREATIONAL CORE

Active recreational with walking loop, new basketball courts, play area, fitness and splash pad - Existing pavilion to remain

NATURE PLAY ZONE - EXPANDED TRAILS

Create a nature play zone on the upper slopes with new soft paths and interactive nature play elements (Story Circles, Log Steppers, Willow Arches, Path Loops, Tee Pees, Sand Pit)



Expanded program zones - Charles Williams Park, 2023

Charles Williams Park

2023 SCHEMATIC DESIGN PLAN

Key Features:

- Consolidate active and passive recreational areas
- Create a framework with walking loops connecting all program areas. Large loop 1/4 mile-Inner loop 1/8 mile.
- Create new park entrances to Mill Street and at the Empire State Trail.

LEGEND

- 1 Splash Pad
- 2 Outdoor Fitness
- 3 Basketball Court - 84' x 50' & Pickle Ball Court
- 4 Play Area - New Equipment for 2-5 and 5-12 y.
- 5 Existing Pavilion to remain
- 6 Nature Play
- 7 Public Restroom (ADA two stall + Mechanical)
- 8 Rain Garden
- 9 Parking Area - 10 spaces + 2 ADA
- 10 Walking Loop



Mill Street Entrance

Trail Connection
Empire State Trail &
North Bay

Charles Williams Park

2023 SCHEMATIC DESIGN PLAN

Basketball Court

- New basketball court 50' x 84' with color seal coat - HH HS Colors
- 12' PVC Coated Chain link at each end
- Polycarbonate backboards



Basketball Courts

Charles Williams Park

BASKETBALL COURT



New basketball court with color seal coat, 12’ height fence at either end, pvc coated chain link



Polycarbonate backboard

Charles Williams Park

OUTDOOR FITNESS



Outdoor Fitness Gym System



Fitness steppers of multiple levels

Charles Williams Park

2023 SCHEMATIC DESIGN PLAN

Nature Play Area

- Work with the Department of Youth and DPW to create an interactive Nature Play Area
- Plant Willow Tunnels and place log steppers along a soft trail network.
- Create tee pees, balance beams and log seating with site harvested Red Cedar
- Create a circular “council circle” seating area and sand pit for ‘messy play’



Nature Play Area - Upper Slope

Charles Williams Park

NATURE PLAY - PRECEDENTS



Charles Williams Park

2023 SCHEMATIC DESIGN PLAN

Play Area

- Provide new more challenging play equipment for ages 2-5 and 5-12
- Anticipate future splash pad with utilities in base contract
- Provide an open picnic area and seating adjacent to the play area
- Create whale themed feature with earthwork or precast high performance concrete



Play Area near Pavilion

Charles Williams Park

PLAY EQUIPMENT



Kompan Silberhorn: Suitable for 5-12 age range




Charles Williams Park

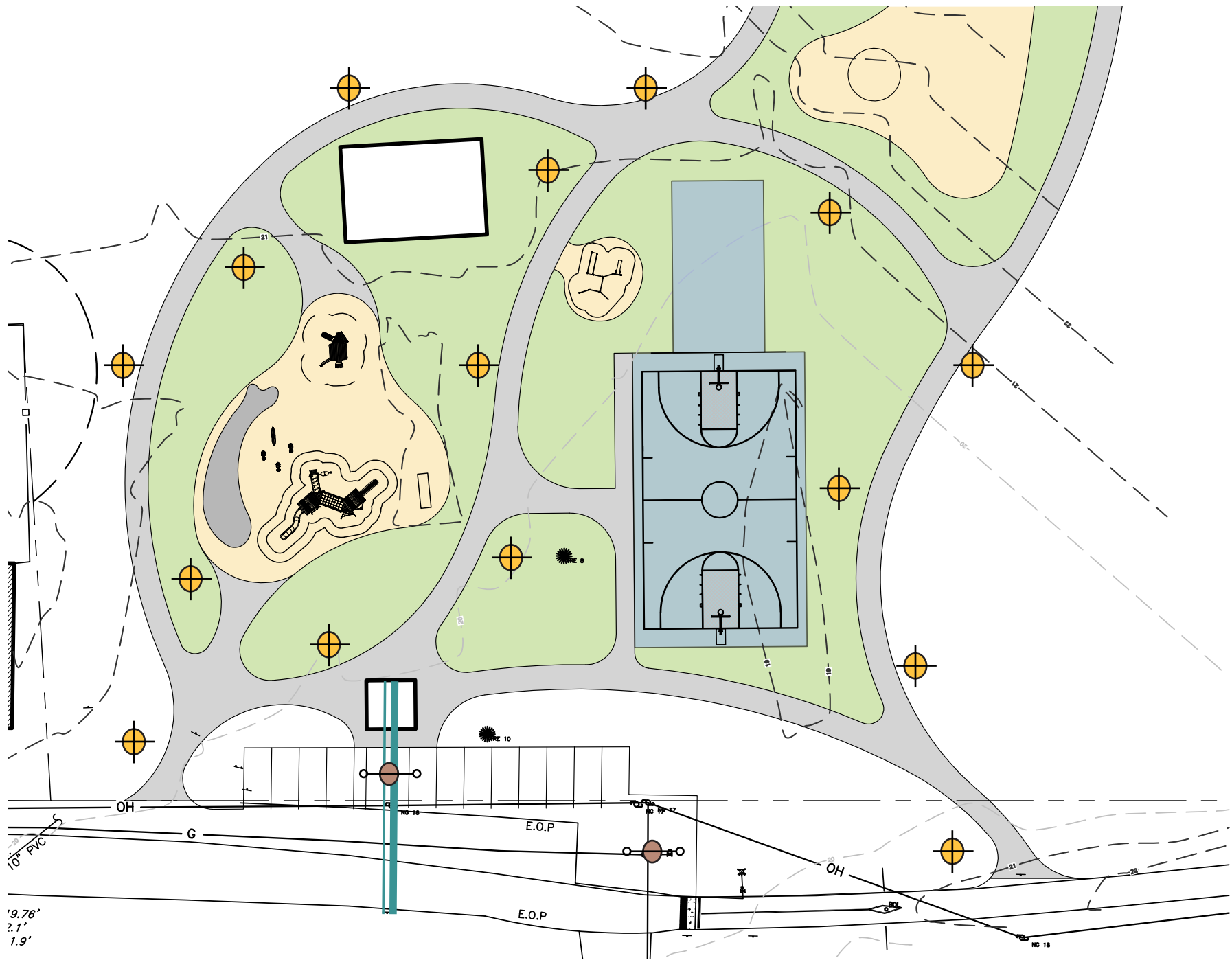
PARK LIGHTING

Site Lighting Overview

- 14 City of Hudson LED Standard Fixtures along main pathways in play and active recreational area only.
- 2 Double head streetlights at parking area, mounted on existing poles
- Need photometrics from NYPA-Ntl. Grid Lighting Consultant to finalize spacing-number of fixtures
- Need foundation design - possible customized for site soils. Pre-Cast or Cast in Place Concrete is typical.

Legend

-  Pedestrian Luminaire
-  Streetlight Mounted on Existing Electric Pole
-  Utility Connections (Water, Sewer, Electric)



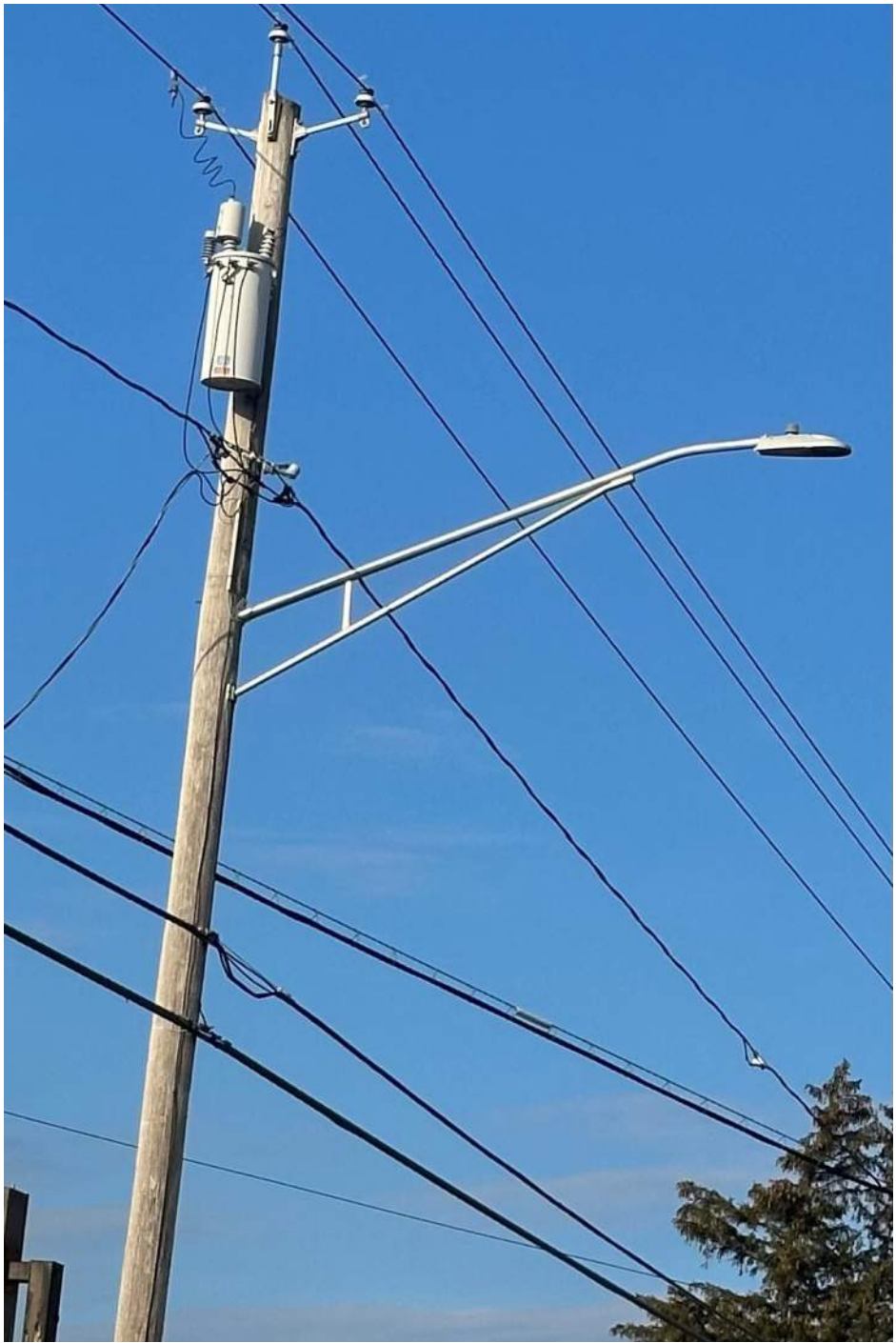
Lighting layout on schematic design plan - focus of lighting on active recreational and play areas. Existing pavilion has lighting.

Charles Williams Park

LIGHT FIXTURES



Existing City of Hudson Pedestrian Standard - LED Version



Streetlight on existing electric pole, Doubl-Headed Fixture at Parking

Charles Williams Park

PLANTING

CANOPY TREES



Summer foliage



Pin Oak
(*Quercus palustris*)



Fine-textured foliage with catkins



Exfoliating Bark



River Birch
(*Betula nigra*)

NATIVE UNDERSTORY & FLOWERING TREES



Witch Hazel
(*Hamelis virginiana*)



Service Berry
(*Amelanchier canadensis*)



Fall foliage



Red Chokeberry
(*Aronia arbutifolia*)



Red-Stemmed Dogwood
(*Cornus sericea*)

LAWN AREA AND NO-MOW MEADOW BORDER



Low-Mow Fescue
(*Festuca sp. mix*)



Pennsylvania Sedge
(*Carex pennsylvanica*)



Broomesedge
(*Adropogon virginicus*)



Mow Path with Native Grass Border

RAIN GARDEN & POLLINATOR PLANTINGS



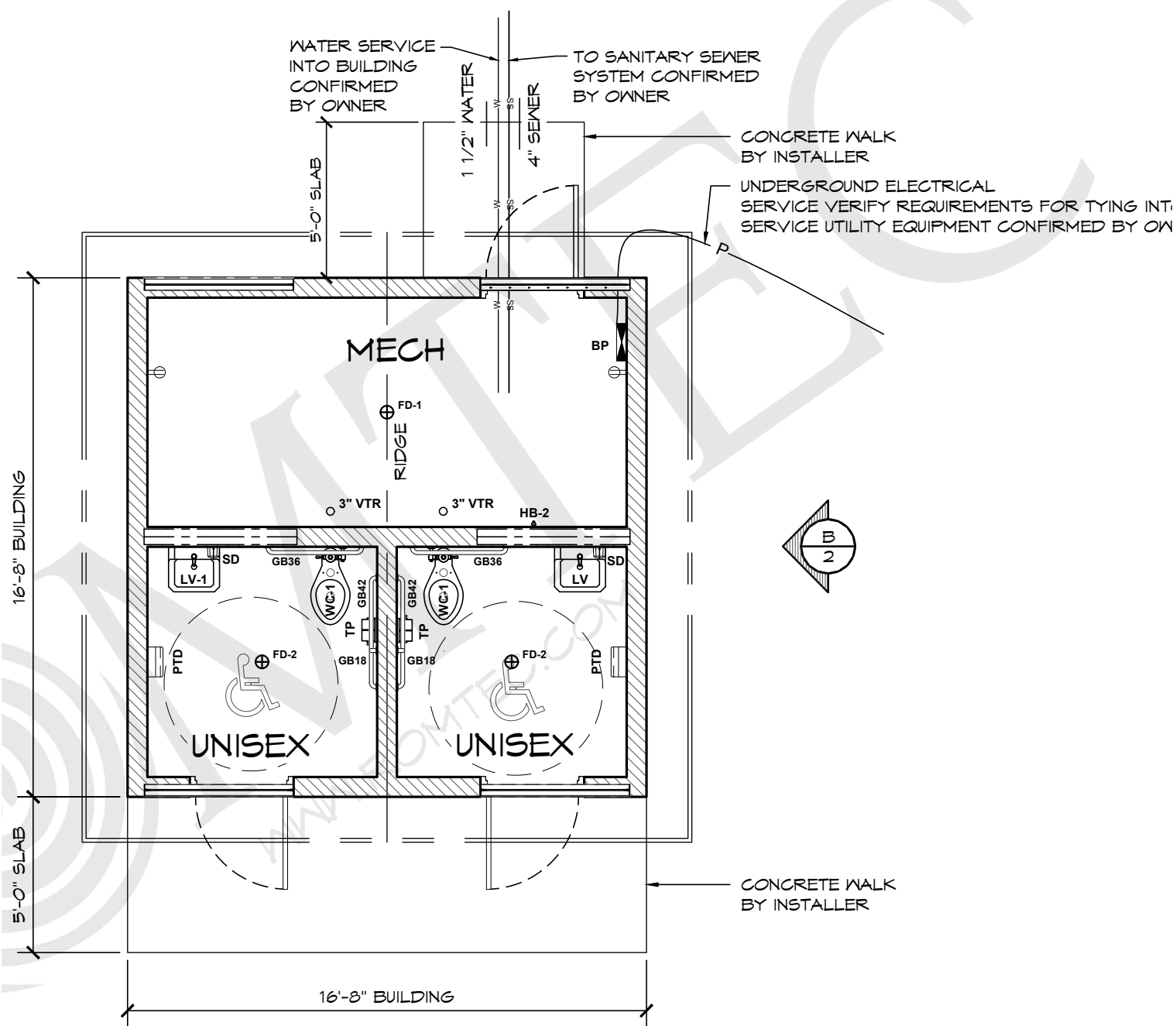
Blue Flag Iris
(*Iris sp.*)



Smooth Aster
(*Aster*)

Charles Williams Park

PRE-FABRICATED PUBLIC RESTROOM - ROMTEC



Romtec: Plans for Romtec Restroom Model 2024 which offers two single-user bathrooms, a large mechanical room for plumbing and electrical utilities as well as extra space for utility sinks, storage and many other services.



Romtec: This simple ADA accessible restroom floor plan is perfect for city parks, athletic fields and schools.

Charles Williams Park

EXISTING CONDITIONS - PRELIMINARY DPW SCOPE

Site Preparation Overview

- Items anticipated for DPW support:
 - Pavement removal
 - Play equipment removal
 - Trenching for conduit and utilities
 - Storm drain and water connections
 - Rough grading
 - Excavation

Legend

Pavement removal

Preparatory grading

Excavation for drainage/rain garden

Utility Connections (Water, Sewer)

This technical site plan map illustrates the proposed preliminary site preparation zones for Charles Williams Park. The map includes various features and annotations:

- Pavement Removal:** Indicated by grey hatched areas, including a large rectangular area in the upper right and a smaller area in the center.
- Preparatory Grading:** Indicated by green hatched areas, primarily located in the lower right and center-right portions of the site.
- Excavation for Drainage/Rain Garden:** Indicated by blue hatched areas, showing a curved feature in the center and a smaller area near the bottom center.
- Utility Connections:** Represented by dashed lines, showing paths for water and sewer lines across the site.
- Other Features:** The map includes labels for existing structures like a 'STORY HOUSE' and a 'PULL BARN', as well as natural elements like 'DECIDUOUS TREE' and 'CONIFEROUS TREE'. It also shows 'DRAINAGE DITCH' lines, 'BENCH' locations, and 'TRASH CAN' sites.
- Boundaries:** A dashed line indicates the 'APPROXIMATE BOUNDARY LOCATION'.

Preliminary site preparation zones on existing survey

ME ENGINEERING

STARR WHITEHOUSE
Landscape Architects
and Planners PLLC

PRO
PROFESSIONAL
ENGINEERING, INC.

CHARLES WILLIAMS PARK
OCTOBER 10, 2023 | 35

Charles Williams Park

2023 PRELIMINARY COST ESTIMATE UPDATE

Phased Estimate

Current Construction Budget

\$280,000

DPW Scope - In House

- Removals
- Utilities - excavation and placement of conduit
- Utilities - new water, sewer and electrical connections
- Park Lighting with NYPA

Base Bid -

- Mobilization and Site Prep beyond DPW
- Earthwork and drainage Improvements, utility connections for future restroom and splash pad
- Walking Loop - Paved
- New basketball court - Color Seal Coat, 12' Fence
- Expanded Nature Play (Upper & Lower Zones)
- Parking Area with ADA stalls & wooden barrier rail
- Landscape Plantings - Canopy Trees & Rain Garden

Through Climate Smart Columbia County (100 trees)

Alternate 1

- New Play Equipment (2-5 & 5-12)
- All new safety surface - interactive path with pollinator- rain garden- Whale feature (berm or pre-cast)
- 250K



Alternate 2

- Public Restroom Pre-Fab (ADA)
- Two stall plus mechanical room
- Includes utilities for Spray Shower
- 200K



Alternate 3

- Pickle Ball + Fitness Area
- Includes safety surface and foundations
- 85K



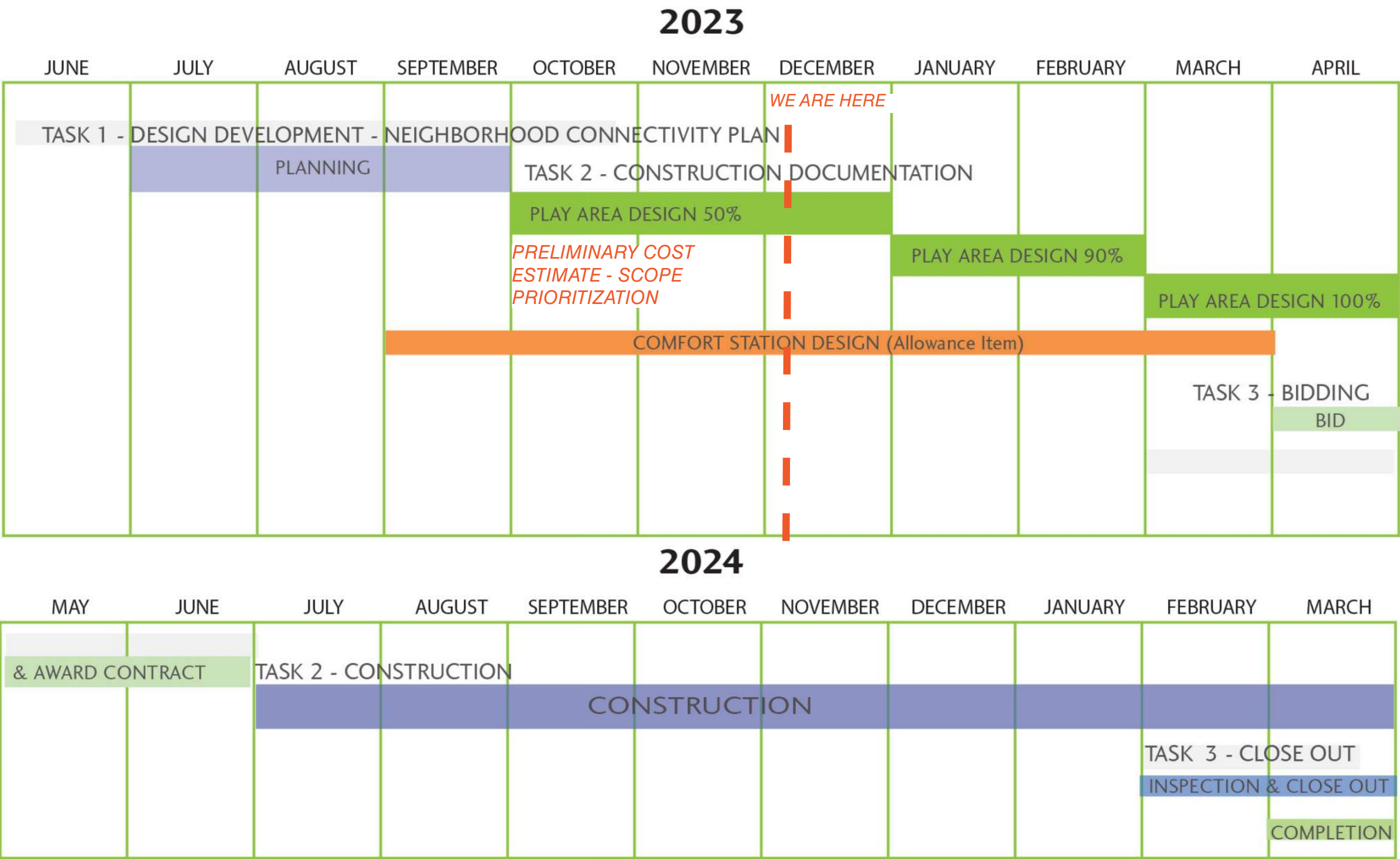
Alternate 4

- Splash Pad - Interactive water features for all ages
- 50K-125K



Charles Williams Park

PROJECT SCHEDULE



STARR WHITEHOUSE

Landscape Architects
and Planners PLLC

Charles Williams Park

Schematic Design Development

December 11, 2023

