



## Sunset Beach Specific Plan

City of Huntington Beach  
+  
California Coastal Commission  
+  
Sunset Beach Local Coastal Plan  
Review Board

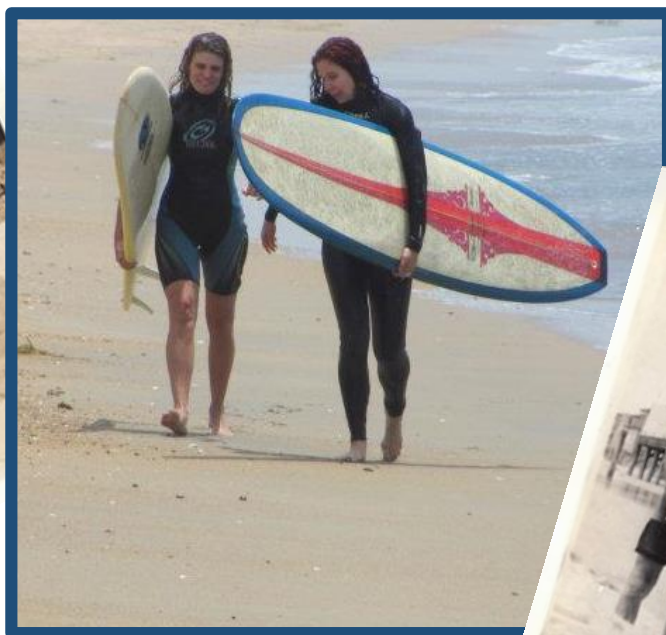
.....

*Working together to  
protect & share the  
uniquely special  
Sunset Beach  
community & coast*



# Sunset Beach Local Coastal Plan Review Board

- Tim McCormack – Chair
- Gail Brice – Vice Chair
- Diane Ellis - Secretary
- Joe Barco
- Anthony Nobles
- Vincent Riley
- Kassie Parker





## Sunset Beach Specific Plan

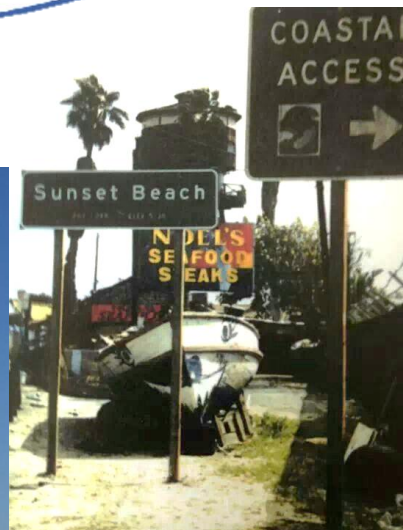
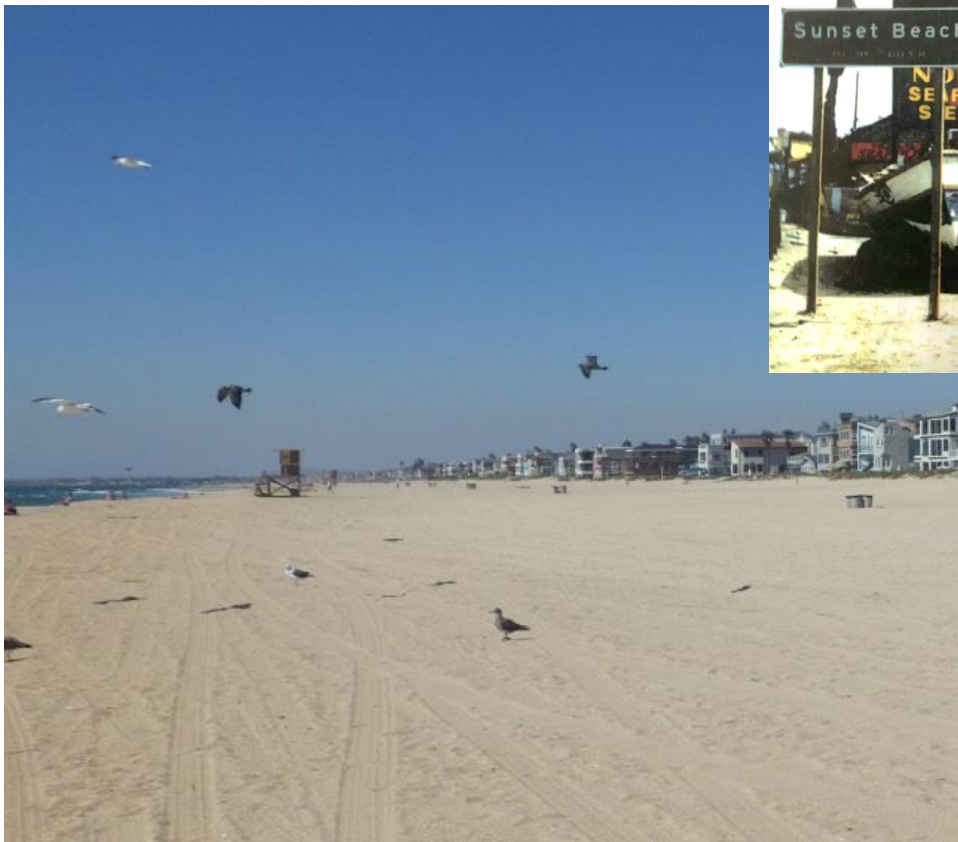
- Sunset Beach is not a luxury resort town
- Authentic Southern California small town beach experience
- Sunset Beach is family oriented & accessible
- Affordable for visitors
- The community includes diverse housing & income-levels of residents





## Sunset Beach Local Coastal Plan Review Board

- 40 years supporting and protecting the best and most affordable public beach in California
- Comprehensive LCP comments regarding proposed Specific Plan Modifications submitted to Huntington Beach
- Today we will focus on Sunset Beach's unique nature





## Commitment to Public Access

- Sunset Beach is the only coastal town with 100% Free Parking
- 78% of Sunset Beach is Public Land
- Affordable access for Sunset Beach Visitors





## Commitment to Public Access

- Entire Length of Sunset Beach is a 15-mph bike trail
- Sunset Beach Bike Trail connects to Bolsa Chica State Beach Bike Trail







## Commitment to Public Access

- The Greenbelt, a 14 acre park, runs the entire length of Sunset Beach
- Dog Friendly Park on Sunset Island
- Restrooms every ¼ mile





## Commitment to Public Access

- Easy & Visible visitor access to the beach
- 27 access points to Sandy Beach
- Entry every 200 feet, over entire one mile length of Sunset Beach







## Commitment to Public Access



- Wide-open beach, quiet, beautiful, natural sand
- Only man-made lifeguard towers & volleyball nets
- 20 ft encroachment does not impact public access
- Support natural vegetation on permanent berms



## Commitment to Protecting the Western Snowy Plover



- O.C. Audubon & Sunset Beach Cooperative Effort
- Winter roosting habitat near the shore
- Provides food source and camouflages sandy-colored plumage





## Commitment to Tourist Services

- Affordable Restaurants & Hotels
- Short-term rentals
- Recreation – Kayak, Paddleboard, Kite Surfing, Surfing & more
- Mixed Use Tourist provides Visitor-Serving businesses





## Commitment to Public Safety

- Fire Rings are Uniquely hazardous in Sunset Beach
- Windy Beach, Prevailing off the Ocean
- History of Fires – Close Proximity of Houses
- Vintage Wooden Houses





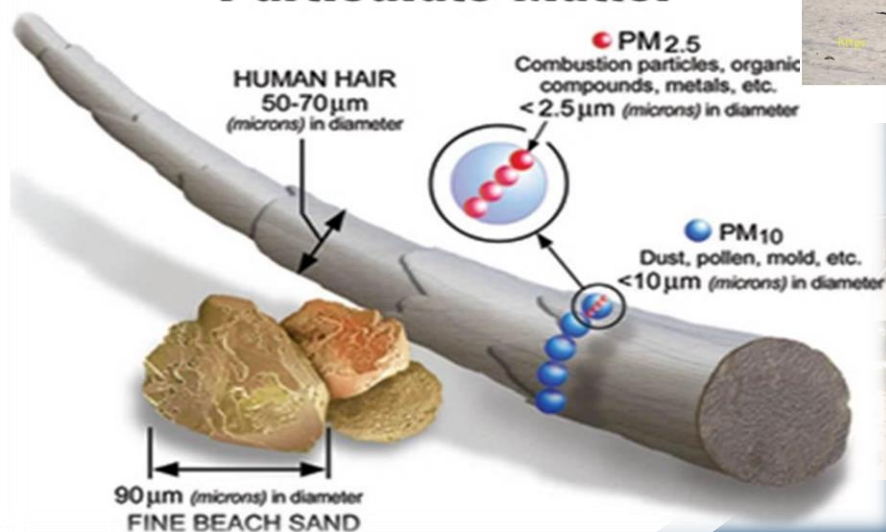


## Commitment to Public Safety

- 500 fire rings immediately south of Sunset Beach
- Residents exposed to PM < 2.5 hazardous smoke
- Airborne particulates are a Greenhouse Gas



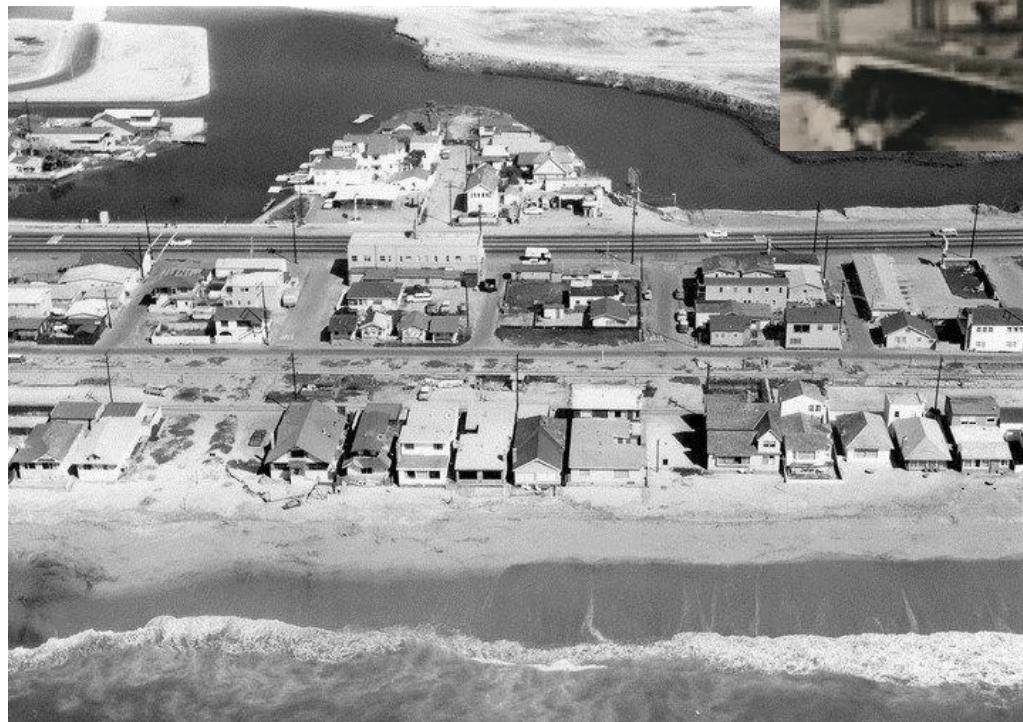
### Relative Size of Particulate Matter





# Sea Level Rise

- Sunset Beach has a history of sea level rise challenges





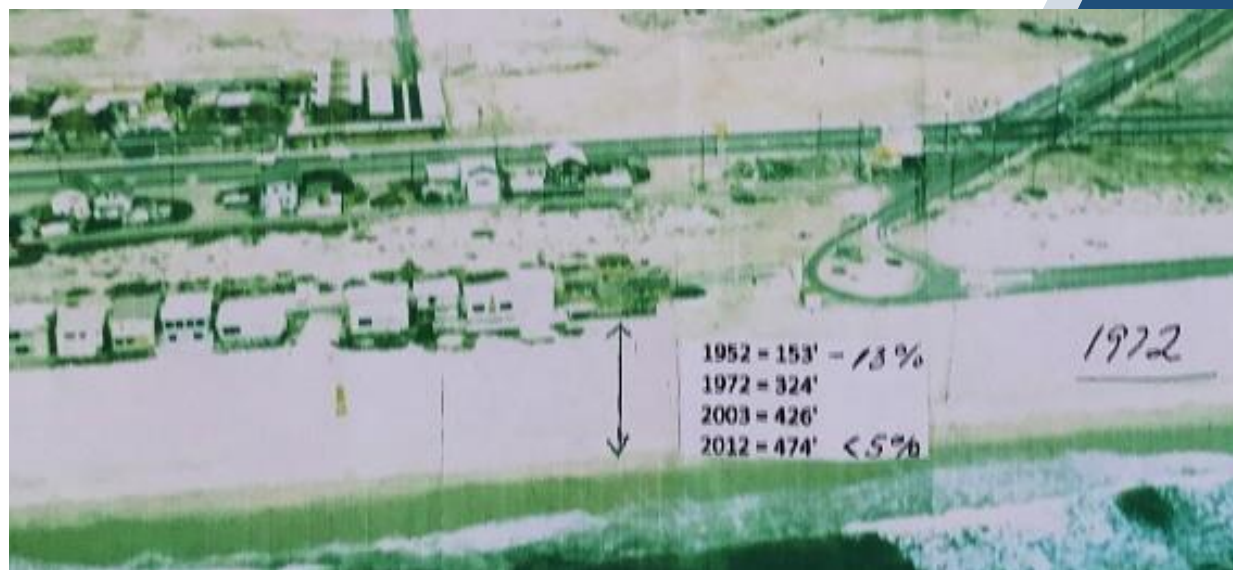


Sunset Beach Beachfront 1950's



# Sea Level Rise

- Successful Sand Replenishment – Increased beach width from 0 to + 450 ft
- Sand Replenishment guaranteed with Seal Beach Naval Station
- Periodic, short-term flooding from harbor, none oceanside





# Sea Level Rise



- Engineered Winter Berm
- Permanent Berms
- Sunset Beach is an island, surrounded by wetlands

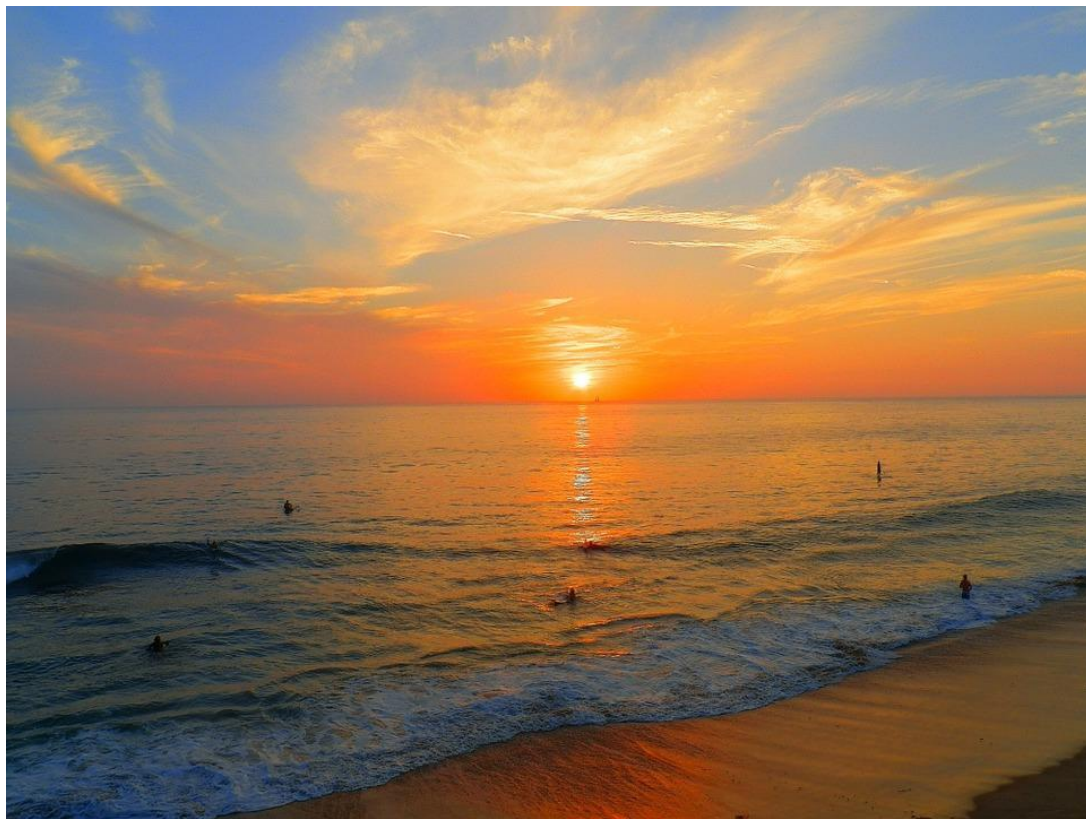






# Sea Level Rise -- Uniformity of Sunset Beach and Sunset Island

- Impact on Coastal Hazard Analyses
- Focus on Shoreline Management Planning
- Phased Approach to 75-year planning



## Sunset Beach Local Coastal Plan Review Board

- Thank you for your attention and consideration.
- We look forward to working together to protect & share the uniquely-special Sunset Beach coast & community
- Next Step - approval & implementation of the Sunset Beach Specific Plan





## Sunset Beach Local Coastal Plan Review Board

# *Sunset Beach.*

### **A Beach Must Have**

Sand—plenty of it.  
Safe, pleasant bathing.  
Drinking water that you can drink.  
Transportation facilities.  
Fishing and boating.

### **A Beach Ought to Have**

A long, shelving waterfront.  
Still water lagoons.  
Pure, soft water for 3 times its possible population.  
A club house and children's playground.  
Conservative management to keep it always.

*The  
Home  
Beach.*

- Questions?

**YOU AGREE TO THAT, DON'T YOU?**