

Gordon-Van Tine Home No. 517 and 517-B.

This Charming Bungalow Has 4 Bedrooms

For Prices on This Home, See First Page.

See Pages 9 and 10 for Full Description of Materials.

This home is priced in two ways. First, with the downstairs only finished—the upstairs simply floored to be used as an attic. Second, the downstairs finished off complete and the upstairs also as is shown in the second floor plan indicated to the left.

ALL the appealing features of the bungalow are included in this charming home. The broad, low lines of the roof, with its dormers in the front and the rear, the heavy brackets, and the wide cornice, give it a distinctive touch.

In studying the side walls an unusual and attractive feature is instantly noticed, produced by carrying the shingled side walls down to the grade line.

The front porch has a stateliness about it that makes an instant appeal. The architectural effect is secured by proper grouping of the pillars.

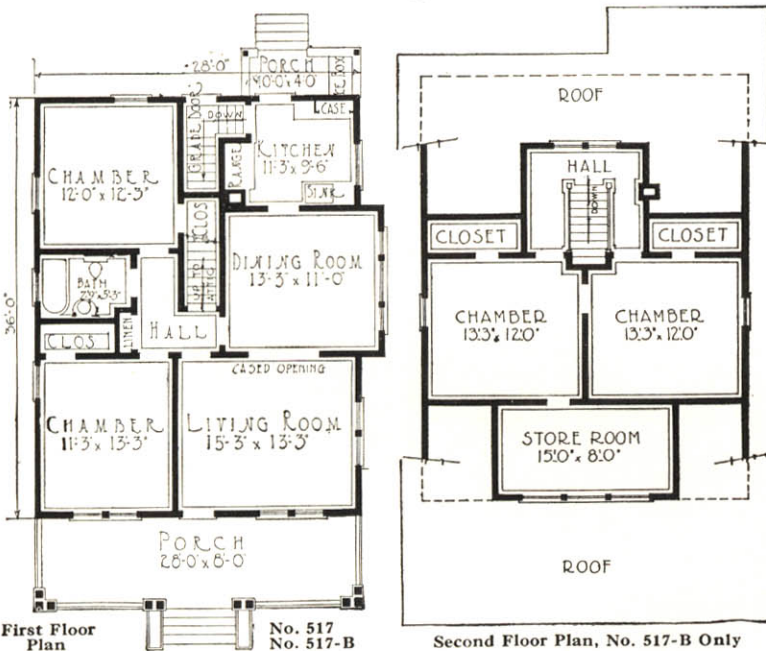
The interior is especially cheerful and cozy. The window arrangement has much to do with this as well as with the good furniture spaces throughout.

The bed rooms and bath have a privacy always desirable. The closets are of unusual size. The linen closet off the downstairs hall is like the one shown in the center color pages.

Careful attention has also been given to the kitchen. The cabinet is the one shown on the colored insert as design "B." This is not far from a large window, in this way providing a light and sunny place for work.

A glazed door leads to the boxed up rear porch. There is also another outside glazed door at the cellar stair platform which is on the same level as the walk. Entrance to the kitchen, therefore, can be secured either from the grade door or from the rear porch.

Our plans call for a house sized basement. You will notice that we have provided the necessary windows. A well constructed house can never have too large a basement, because you may wish to provide a furnace room, a vegetable room and a laundry.



First Floor Plan No. 517

Second Floor Plan, No. 517-B Only

PAINT—Unless otherwise instructed, we will furnish brown shingle stain for the wall shingles and white for the trim of this house.

"DOING ALL THE WORK MYSELF AND GETTING ALONG FINE"

Gordon-Van Tine Co. Richmond, Mo., Nov. 1st.
 Gentlemen: Yours of October 23rd at hand. I am getting along fine with my house. Everything is all O. K. I am doing the work all myself and have had no trouble so far. You may send me the rest of my order at once as I will be ready for it by the time it gets here. Kindly let me know when you ship so I will be on the lookout for it. I want to know how much more it will be to send window blinds for the whole house. Yours very truly, Robert Wells.

For Plumbing, Heating, Lighting for This Home, See Last Pages of Book



Gordon-Van Tine Home No. 507

Very Popular 4-Bedroom Bungalow

For Prices, See First Page.

See Pages 9 and 10 for Description of Materials.

THIS has proved to be one of our most popular bungalows both because of its attractive exterior and because of its convenient interior.

You'll like the Colonial design of the windows and the corresponding door and the friendly aspect given by the deep bracketed cornice and the front dormer. The heavy porch frieze, the outlined belt course, as well as the shed roof over the dining room windows, all add to the popular low, broad effect wanted in the bungalow.

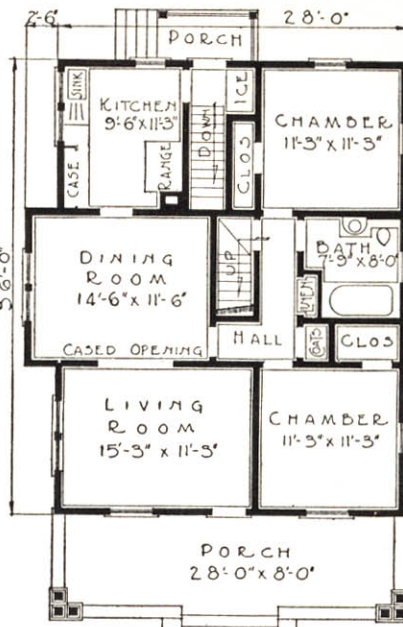
This is made more pronounced by the shingles used above the belt course. By extending the siding to the grade line a much better effect has been obtained than could be had by exposing the foundation.

The living room is unusually light and is made more roomy by the broad cased opening into the dining room. The wall space well arranged for the placing of furniture. These same facts are true of the dining room made unusually cheerful by the window extension. The wall opposite offers just the proper place for the sideboard or buffet.

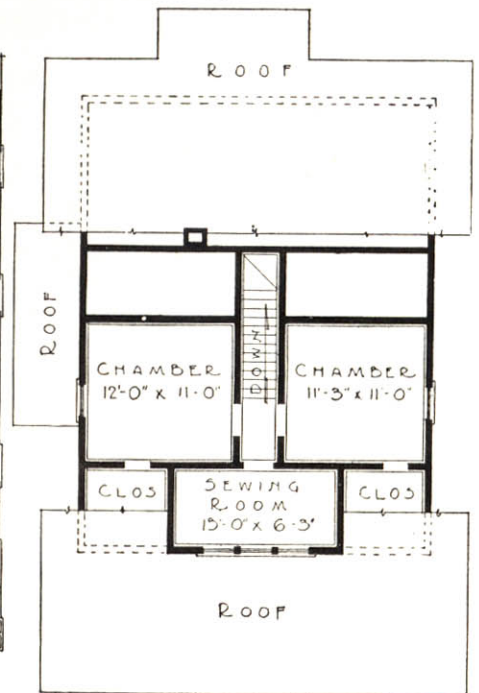
The kitchen is completely furnished with our splendid "D" design kitchen case. This as well as the space left for the sink have the best of light. The entire kitchen arrangement is the most convenient possible.

The ice box space in the entry is out of the way, and still close at hand. The arrival of the iceman need not concern the housekeeper as he does not enter the kitchen to fill the refrigerator.

The hall opening from the dining room connects all parts of the house. The bath and linen closet, which is like the design shown in the colored section, are easily accessible to all the bed rooms, for the stairway ascends from this hall and brings one directly to the three upstairs rooms. The sewing room with its triple windows is a cheery little work room that will make order



First Floor Plan



Second Floor Plan

in the rest of the house less of a problem and offer an emergency sleeping place when necessary.

There is ample closet room for each of the four bed rooms that all admit of a various placing of furniture. All in all, an especial spirit of convenience and economy of space ruled when this house was being designed.

The basement is under the entire house and well lighted and ventilated. For this we provide six sash.

PAINT—Unless otherwise instructed we will furnish Body Paint, French Grey, Trim White, Shingles above belt course and Dormer Stained Grey.

For Plumbing, Heating, Lighting for This Home, See Last Pages of Book