

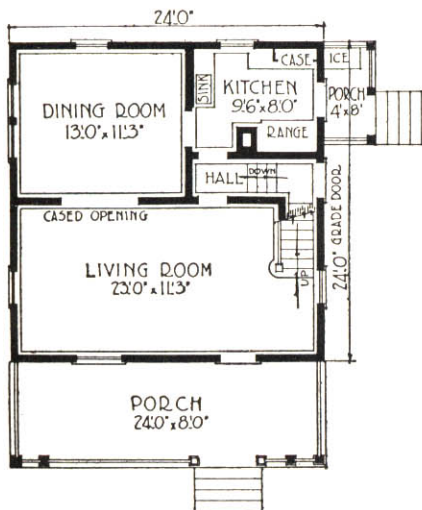


Gordon-Van Tine Home No. 577

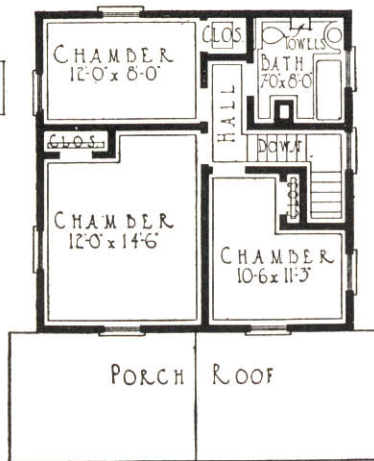
Particularly Attractive Two-Story Home

For Prices on This Home, See First Page.

Read Pages 9 and 10 for Full Description of Material.



First Floor Plan



Second Floor Plan

PAINT—Unless otherwise instructed, we will furnish green stain for the wall shingles and white paint for the body and trim of this home.

WHAT THE WORKMEN SAID

Gordon-Van Tine Co., Davenport, Iowa.

Findlay, Ohio.

Gentlemen: The workmen declared without hesitation that the material furnished in the construction of this bungalow was the best ever shipped into Findlay. This attractive and comfortable home must be seen to be appreciated.

Dr. W. H. Drake.

THE popularity of a home is measured by its desirability. In this house you see a home that is justly popular, because it is roomy, as well as economical, although the size is modified to permit the greatest economy of material. Herein is full measure of home comfort.

This is a standard type of dwelling of which there are many variations. This design is developed to afford the maximum home-service at the minimum cost. The exterior is carefully planned. Sided walls to the belt line with shingles above is especially good treatment on a house of this size and type. The porch gable harmonizes with the main roof gable. The heavy timber brackets always are consistently used with a wide cornice.

The interior impresses one even more favorably—the large living room lighted on three sides, with the beautiful open stairway, gives the impression of comfort and beauty. The dining room is entered through a cased opening. If desirable to close one room from the other install a pair of the beautiful French doors shown on the center color pages.

The kitchen is planned just like all Gordon-Van Tine kitchens—everything is arranged to make the work a pleasure and most convenient. Our kitchen case, style "B," as shown on the color pages, is included. Note especially how readily accessible are all rooms to the kitchen. Entrance is made to the kitchen either from the grade door or the rear door. These doors are glazed.

The three bed rooms have windows in each outside wall, also good closet space. The bath leaves nothing to be desired. Our towel cabinet is provided for this room. The bed room doors are so arranged that the bath is but a step away.

Whether you are building a home to live in, or for investment, here is a house that will answer every requirement at a very low cost.

For Plumbing, Heating, Lighting for This Home, See Last Pages of Book



Gordon-Van Tine Home No. 578

Impressive Home—A Space and Money Saver

For Prices on This Home, See First Page.

Read Pages 9 and 10 for Full Description of Materials.

FOR the size, here is indeed a massive appearing home. It is substantial and will reflect your good judgment in building it. Study the floor plans. You'll be impressed with the fine proportion and balance which is so evident throughout.

The gabled porch with boxed rails of siding and heavy columns harmonize with the dormer and general outline of the house. Above the belt the house is shingled up to the wide closed cornice. These features tend to give the house an appearance of greater size, still the balance is so perfect that no suggestion of over-size is at all evident.

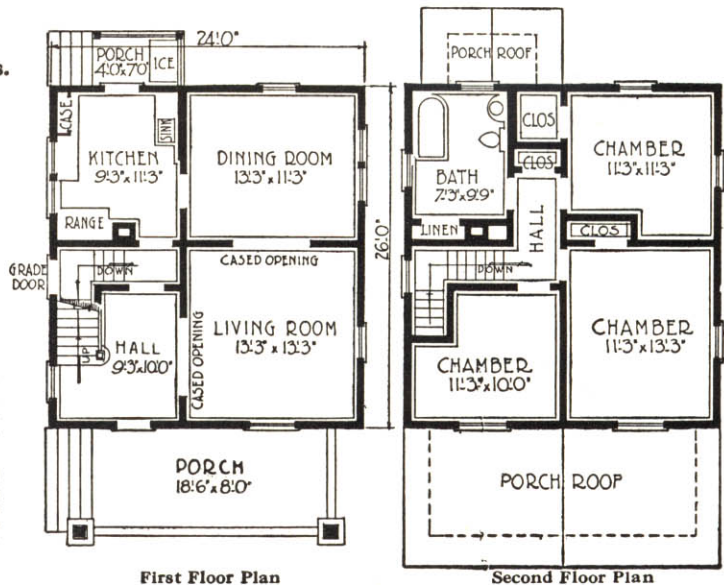
A beautiful Monterey front door, glazed bevel plate leads into the reception hall. The hall is not just a hall—it is of room proportion. The open stairway enhances the beauty of this home—it is characteristically a Gordon-Van Tine stairway. The living and dining rooms are spacious and well lighted. The living room has a window in each outside wall—the dining room has a large twin window in the right wall and a single window in the rear wall directly opposite the front living room window.

The kitchen has been given careful thought. Notice the ease with which the housewife can reach the front hall and the dining room. Each step saved means economy in doing the work. The kitchen case is design "C", shown on the color pages. The grade door and rear door are glazed doors and allow exit or entrance either from the side or rear.

Upstairs are three big chambers and bath with ceiling height 8 feet in the clear. Plenty of windows in each wall assure good light and air. Don't overlook the handy linen case we furnish—every home should have one. Plans provide for a basement under entire house, which provision is of course very practical.

Build this house and you build for the future. The design will never be "out-of-date". It will look well in any surrounding. Here is beauty, comfort and economy

PAINT—Unless otherwise instructed we will furnish white paint for siding and trim, and moss green shingle stain for the wall shingles.



ALL MATERIAL FIRST CLASS—SAVED \$200.00

Gordon-Van Tine Co., Davenport, Iowa.

Marion, Ohio.

Gentlemen: We like our home very much. We certainly enjoy every part of it. The lumber and all material are first-class and better than we expected and not only that, but we also saved about \$200.00 by buying of you. We also like the Jap-A-Top shingles. We think they will be far more durable than wood shingles and look better.

Yours truly, (Signed) C. L. Wahl.

For Plumbing, Heating, Lighting for This Home, See Last Pages of Book