

# Neill Public Library

## Library Card Design Contest Entry Form

Please submit your entry with a signed Photo/Creative Works Release Form.  
Incomplete entries will not be considered.

### Everyone is invited to help design a new library card!

One design will be selected from each of three age groups: 0-11 years, 12-17 years, and 18+

When creating your design, you might consider (but are not limited to) what you love about Pullman, what libraries mean to you, a beloved book, or how the library enhances community connections.

Indicates library card border (2 1/8" x 3 3/8") \_\_\_\_\_  
Background needs to extend out to this line - - - - -  
Text cannot pass this line - - - - -

- Your design must fit in the rectangle. Important text/design must be kept within the guides.
- Design entry should be in jpeg, png, ai, eps, psd, or pdf format and must not exceed 50MB in size.
- Scans, images, and photos that are used in your design must be at least 300 DPI at its actual size (resolution).



Actual Size of Library Card

Feel free to print this template at a LARGER SIZE to create your artwork, as long as the ratio remains the same, but keep in mind that small design elements will be even smaller when adjusted to fit actual size. For your convenience, a large-scale version of the template is available on the last page of this packet.

Entry forms are also available on our website at [www.neill-lib.org](http://www.neill-lib.org).

Winning designs will be selected based on creativity, artistic expression, and the message communicated.

Artist's Name \_\_\_\_\_

Mailing Address \_\_\_\_\_

Email (optional) \_\_\_\_\_ Phone \_\_\_\_\_

Age of Artist:  Youth (0-11 years)  Young Adult (12-17 years)  Adult (18+)  
*(Please use age at time of entry submission)*

**Entries will be accepted Wednesday May 1 - Saturday June 1, 2024**

# Neill Public Library

## Library Card Design Contest Rules & Guidelines

- The deadline to turn in entries is **Saturday, June 1, 2024**.
- All artwork must be the original work of the artist and may be created digitally or by hand on the entry sheet.
- No use of trademarked characters or logos is allowed.
- Completed Entry Form and Release Form may be returned to the library in-person or emailed to [library@neill-lib.org](mailto:library@neill-lib.org) with "Contest" in the subject line.
- Only complete entries, including the attached Release Form, will be reviewed.
- One entry per person. If multiple entries are received from the same person, only the last entry will be considered.
- Entry is open to the general public. There is no age limit or residency requirement.
- Entry into age category will be determined by the age of the applicant.
- Artwork can include high resolution (minimum 300 dpi) computer-generated or digital photographic submissions or paper submissions using colored pencil, pen, paint, camera, or computer-generated art. Artwork should be two-dimensional for printing purposes.
- All designs must be completed on the template. You may re-create the template but please keep the dimensions the same and include all the requested information.
- The winning designs will be used for the official library cards, and may be used on library promotional materials, such as posters, bookmarks, forms, and flyers, as well as library website and social media accounts.
- All rights to submitted artwork will belong to Neill Public Library.
- Winners will be notified in August 2024 and publicly announced on Monday, September 2, 2024 in celebration of National Library Card Sign-Up Month.

**Questions?** Contact [library@neill-lib.org](mailto:library@neill-lib.org) for more information.



**Neill Public Library**

*explore • discover • connect*

# Neill Public Library

## Library Card Design Contest Release Form

This signed form **must** be attached to your entry form.

I, \_\_\_\_\_, certify that the attached submission to the Library Card Design Contest is my (or my child's) own original creative work and does not infringe the intellectual property rights of any third party. I give permission for Neill Public Library to reproduce creative works resulting from my (or my child's) participation in the Library Card Design Contest. I understand that the purpose is to build community engagement and to promote Neill Public Library and its services/programs. I give permission with the following understanding:

- No compensation will be paid for the use of the artwork;
- All entries become property of Neill Public Library, and may be reproduced and/or modified to fit on the library card or for other purposes;
- Entries will not be returned to the artist;
- Neill Public Library is not responsible for late, lost, or incomplete entries.

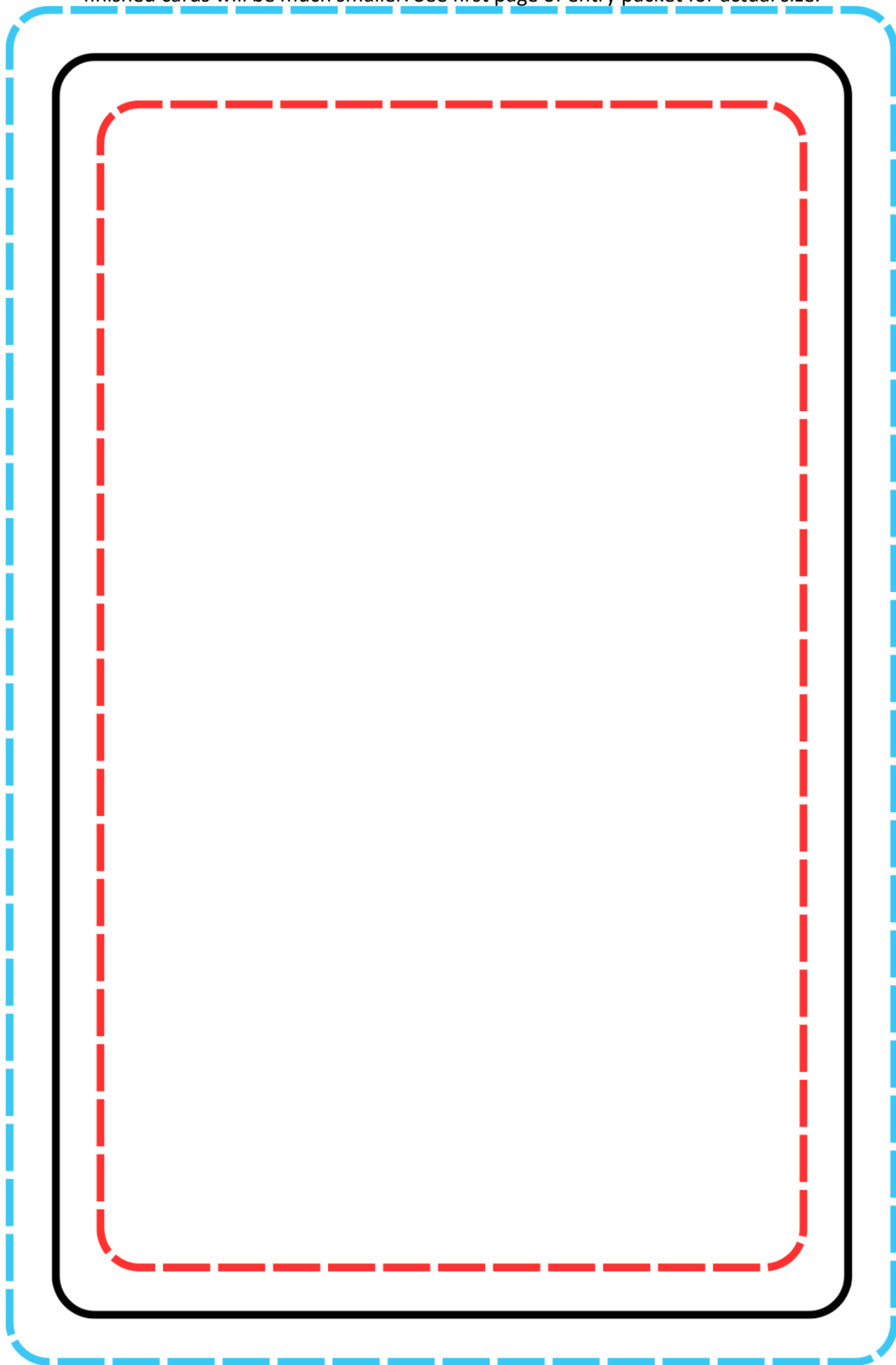
Artist's Name: \_\_\_\_\_

Signature: \_\_\_\_\_

*To be signed by parent/legal guardian if participant is under 18 years of age*

Today's Date: \_\_\_\_\_

You may use this template to create your design, but be aware that the finished cards will be much smaller. See first page of entry packet for actual size.



All text and images must fit inside the red rectangle to guarantee inclusion on cards.  
Background images must extend to fill the entire blue rectangle.