



City of  
Golden

# OPEN SPACE MASTER PLAN

PHASE 2

# Contents

**ACKNOWLEDGMENTS.....4**  
**EXECUTIVE SUMMARY .....5**  
**GLOSSARY OF TERMS..... 10**

---

**01**

**INTRODUCTION ..... 12**  
**1.1 Outcomes of Phase 1..... 13**  
**1.2 Community and Stakeholder  
Engagement Summary..... 14**

---

**02**

**IDENTIFICATION OF OPEN SPACE  
PROPERTIES ..... 16**  
**Potential Conservation Area (PCA) ..... 17**  
• Key Features of PCAs in Colorado ..... 17  
• Key Elements Assessed..... 17  
**2.1 Open Space System Inventory ..... 18**  
• Existing Open Space Map..... 19  
• Coors Tech Wetland Open Space ..... 20  
• Cottonwood Open Space ..... 22  
• Grampsas North Open Space ..... 24  
• Grant Terry Trail Open Space..... 26  
• Heritage Dells & Tripp Ranch  
Meadow Open Spaces ..... 28  
• Illinois Street Open Space ..... 30  
• Kinney Run Open Space ..... 32  
• Magic Mountain Archaeological Site ..... 34  
• North Hogback Open Space..... 36  
• North Table Mountain Open Space..... 38  
• Parfet Open Space ..... 40  
• Parfet Prehistoric Preserve..... 42  
• Schweich Hill Open Space..... 44  
• South Table Mountain Open Space ..... 46  
• Tucker and Cressman Gulch Open Space..... 48  
• Welch Ditch..... 50  
**2.2 Classification Model..... 52**  
**2.3 Attributes..... 53**





03

**MAINTENANCE, PRESERVATION,  
AND RESTORATION ..... 54**

3.1 Recommended Open Space  
Management Plan .....55

**RECOMMENDATIONS ..... 61**

04

4.1 Recommended Update to  
the Mission Statement .....62

4.2 Recommended Update to  
the Vision Statement .....62

4.3 Recommended Update to the  
Definition of Open Space.....63

4.4 Recommended Land Evaluation  
and Acquisition Policy.....63

4.5 Recommended Development  
Policies for Open Space .....64

4.6 Strategic Action Plan .....65

**APPENDIX A: COMMUNITY SURVEY ... 70**

**APPENDIX B: COMMUNITY  
ENGAGEMENT ..... 77**

**APPENDIX C: OPEN SPACE  
PROPERTY SUMMARY ..... 86**

**APPENDIX D: CAPITAL  
IMPROVEMENT PLAN..... 89**

# Acknowledgments

The preparation of this document would not have been possible without the guidance and support of the City of Golden’s dedicated leadership. We extend our sincere thanks to the Golden City Council and Parks & Recreation Advisory Board for their commitment to the community.

## GOLDEN CITY COUNCIL

Laura Weinberg  
**MAYOR**

Patty Evans  
**DISTRICT TWO  
COUNCILOR**

Paul Haseman  
**WARD TWO COUNCILOR**

Lisa Vitry  
**DISTRICT ONE  
COUNCILOR**

Robert Reed  
**WARD ONE COUNCILOR/  
MAYOR PRO-TEM**

Don Cameron  
**WARD THREE COUNCILOR**

Bill Fisher  
**WARD FOUR COUNCILOR**

## PARKS & RECREATION ADVISORY BOARD

Pete Erslev

Catherine Hansen-Stamp

Laurel Starr

Forbes Cone

Sandy Hazzard

Michele Minihane

Kermit Shields

A special thank you goes to the OSMP Phase 2 Working Group, whose expertise and dedication helped shape the vision for Golden’s open spaces:

Hannah Clark

Lauren Hendricks

Tom Schweich

Ashley Giles

Ann Norton

Julie Taylor

Colin Heinrich

Renata Platenberg

Lisa Vehmas

The City of Golden thanks the Stewards of Golden Open Space—a 501(c)(3) nonprofit formed by Golden residents—for their continued advocacy, partnership, and stewardship in protecting the city’s natural landscapes. Their commitment to transparency, inclusivity, and the values of Golden Vision 2030 plays a vital role in preserving open space resources for future generations. Most of the photos featured in this document were generously provided by the Stewards, capturing the beauty and significance of Golden’s open space system.

# EXECUTIVE SUMMARY



Golden’s open spaces are a cornerstone of the community’s identity—providing environmental, historical, and scenic value while preserving critical natural resources. Phase 2 of the Open Space Master Plan (OSMP) builds on the foundational work of Phase 1, which established a community-supported mission, vision, and definition of open space grounded in conservation and preservation principles.

Phase 2 advanced this work by evaluating which City-owned properties meet the adopted definition of open space and developing tools to support consistent stewardship. This included the identification of 16 open space properties totaling approximately 391 acres, the introduction of a property classification model based on public access and resource sensitivity, and the identification of six key attributes that describe each site’s conservation and community value.

This work was shaped by a subject matter expert Working Group, input from key stakeholders, a statistically valid community survey, a community open house, and online engagement through the Guiding Golden platform.



**KEY THEMES THAT EMERGED INCLUDE:****STRONG COMMUNITY SUPPORT FOR CONSERVATION**

72% of survey respondents prioritized protecting open space from development, and 65% emphasized preserving natural habitats and wildlife.

**RECREATION IS VALUED BUT SECONDARY**

Only 34% of survey respondents ranked recreation above conservation priorities such as habitat protection, resisting urban development, and preserving Clear Creek and nearby waterways.

**NEED FOR CLEARER MAPPING AND COMMUNICATION**

Many residents expressed confusion about which lands qualify as open space, highlighting the importance of a City-published open space map and property signage.

**DESIRE FOR ENHANCED EDUCATION AND WAYFINDING**

Residents expressed interest in clearer signage, interpretive information, and tools to better understand open space boundaries and conservation goals.

**INTEREST IN EXPANDED STEWARDSHIP AND VOLUNTEER OPPORTUNITIES**

Community members showed support for more ways to actively care for and engage with open space through hands-on involvement.

**KEY OUTCOMES OF PHASE 2: INTEREST IN EXPANDED STEWARDSHIP AND VOLUNTEER OPPORTUNITIES**

Community members showed support for more ways to actively care for and engage with open space through hands-on involvement.

- ▶ Refined mission, vision, and open space definition language that emphasize native plants, wildlife habitat, and meaningful connection to nature.
- ▶ A classification model distinguishing between Natural Areas and Resource Protection Areas to guide access and stewardship.
- ▶ Development of a six-attribute framework to evaluate open space properties and guide future acquisition and management decisions.
- ▶ A standardized open space management plan covering vegetation, habitat, trail, and cultural resource care.
- ▶ Development of policies to guide future trail development and open space improvements, manage social trails, and protect sensitive areas from overuse.

These recommendations should be implemented as leadership assesses staffing needs, available funds, citywide priorities, and building capacity for stewardship.

	<b>01</b>	<b>FORMALIZE UPDATES TO OPEN SPACE MISSION, VISION, DEFINITION, AND PROPERTY NAMES:</b> Adopt updated foundational language and consistent property names to reinforce the City’s commitment to conservation, preservation, and stewardship.
	<b>02</b>	<b>STRENGTHEN CONSERVATION POLICIES AND PROTECTIONS:</b> Adopt policies for managing trails to ensure all trail decisions prioritize ecological integrity, sensitive habitat protection, and long-term sustainability.
	<b>03</b>	<b>IMPROVE PUBLIC EDUCATION ON CONSERVATION:</b> Enhance awareness through signage, digital tools, and stewardship programs that highlight ecological values and responsible protection and use of open space.
	<b>04</b>	<b>INCREASE COLLABORATION AND COORDINATION:</b> Strengthen partnerships with regional land managers, historical and tribal organizations, and community groups to align conservation efforts and improve management.
	<b>05</b>	<b>IMPLEMENT PRELIMINARY OPEN SPACE ATTRIBUTES:</b> Use six core attributes—Ecological, Cultural, Paleontological, Active Visitation, Passive Visitation, and Scenic—to guide acquisition, and stewardship decisions.
	<b>06</b>	<b>IMPLEMENT A PRELIMINARY CLASSIFICATION MODEL:</b> Apply a consistent framework distinguishing Natural Areas and Resource Protection Areas to communicate access levels and prioritize resource protection.
	<b>07</b>	<b>PHASE IN THE OPEN SPACE MANAGEMENT PLAN:</b> Implement a standardized, citywide framework to guide vegetation, habitat, access, and cultural resource management across all open space properties.
	<b>08</b>	<b>SECURE SUSTAINABLE FUNDING FOR LONG-TERM STEWARDSHIP:</b> Conduct an annual review of Open Space funding in the City’s general operating budget and actively pursue dedicated funding sources, grants, and partnerships to support ongoing acquisition, management, restoration, maintenance, and capital improvements.
	<b>09</b>	<b>TRANSITION TO OSMP PHASE 3:</b> Launch the next phase of planning by conducting field-based inventories and developing site-specific management and trail assessments.



### WHAT COMES NEXT: PHASE 3

Phase 3 of the OSMP will shift focus from systemwide planning to site-specific strategies that respond to the unique needs of each open space property. This phase will include:

- ✓ Allocating funding in the City's general operating budget to support Phase 3 of the OSMP development.
- ✓ Developing individual maintenance, conservation and restoration plans tailored to each open space parcel.
- ✓ Completing a comprehensive field-based physical and ecological Inventory of each open space parcel to inform conservation efforts, identify sensitive areas, and prioritize restoration and management needs.
- ✓ Evaluating current staffing levels in relation to site goals; identify skill gaps and explore seasonal or specialized positions to support effective stewardship.
- ✓ Reviewing and confirming, modifying, or rejecting the open space classification system, attributes, and public access recommendations using inventory findings and conservation priorities.
- ✓ Improving signage and wayfinding on designated trails, assessing social trail impacts, and determining which should be closed, restored, or officially integrated based on ecological and safety criteria.

By implementing the recommendations from Phase 2 and advancing into Phase 3, Golden can strengthen its position as a leader in open space conservation while honoring its unique ecological, cultural, and scenic resources.

# Glossary of Terms

This glossary provides definitions for key terms used throughout Phase 2 of the OSMP. These terms reflect the language and concepts developed or refined during the planning process to support consistency in understanding and decision-making. Definitions are intended to guide interpretation of this document and future planning efforts related to Golden’s open space system.

---

## ARCHAEOLOGICAL RESOURCES

Physical remnants of past human life or activities found in the landscape, such as tools, structures, or sites of past habitation. These resources offer insight into historical cultures and are protected for their research and heritage value.

## ATTRIBUTE

A defining feature or characteristic of an open space property that contributes to its ecological, cultural, scenic, or recreational value. Attributes help describe the role a property plays within the open space system and inform decisions about its management and protection.

---

## CLASSIFICATION

A management designation assigned to an open space property based on its primary conservation purpose, resource sensitivity, and appropriate level of public access. Classifications, if used, can guide stewardship practices, access policies, and long-term land use decisions.

## CONSERVATION

The proactive care and management of land to protect its ecological, scenic, and cultural values over time. Conservation emphasizes long-term resource health, ecological function, and landscape resilience through thoughtful planning, restoration, and maintenance.

## CULTURAL RESOURCES

The human history and heritage connected to the landscape, including traditional land uses, settlement patterns, and stories that shape a community’s identity. Cultural aspects of open space may be reflected through visible features, landforms, or historical significance.

---

## DESIGNATED PUBLIC ACCESS

Officially sanctioned and marked entry points, trails, or areas where public access is allowed and managed to protect natural resources and visitor safety.

---

## FIELD-BASED PHYSICAL AND ECOLOGICAL INVENTORY

A thorough assessment of a site’s natural and cultural resources, including plant and animal species, habitat types, ecological functions, geologic features, and historically or culturally significant sites. This inventory establishes a baseline for understanding the environmental and cultural conditions of each property and is essential for guiding conservation strategies, restoration priorities, and long-term management decisions.

---

## INVASIVE SPECIES

Non-native plants or animals that spread rapidly and can displace native species or disrupt ecosystem processes.

---

## NATURAL RESOURCES

Naturally occurring features such as soil, water, vegetation, wildlife, and landforms that support ecological health, biodiversity, and environmental functions.

## NATIVE SPECIES

Plants and animals that occur naturally in a particular region or ecosystem, having evolved or existed there without human introduction.

**NATIVE LANDSCAPE AREA**

A small, defined portion of a park intentionally preserved in a more natural state to support native vegetation, provide habitat, or offer a quieter setting for passive use. For the purposes of this plan, native landscape areas are distinct from open space and are located within park boundaries.

---

**OPEN SPACE**

Those lands owned or acquired by the City of Golden, whose purpose is primarily conservation or preservation, and that are managed to maintain, improve, or adapt the ecological and/or historical integrity of the parcel for enjoyment by future generations.

---

**PALEONTOLOGICAL RESOURCES**

Fossilized remains or traces of ancient plants and animals preserved in the landscape. These non-human resources are important for understanding prehistoric life and are distinct from cultural or archaeological features.

**PARK**

A public space intentionally designed and maintained for recreation, social interaction, and community gathering. Parks often include amenities such as playgrounds, sports fields, shelters, restrooms, and open lawns.

**PUBLIC ACCESS**

The ability for the general public to enter, use, or travel through a property.

**PRESERVATION**

The protection of land, features, or resources in their existing state to prevent disturbance or change. Preservation emphasizes maintaining the original condition and integrity of sensitive areas, often through minimal or no human intervention.

---

**RESTORATION**

Activities aimed at recovering the health, function, or natural features of a degraded landscape.

**RIPARIAN CORRIDOR**

A vegetated area along a stream or waterway that plays a key role in filtering runoff, stabilizing banks, and supporting wildlife.

---

**SOCIAL TRAIL**

An informal, user-created path formed by repeated use. Social trails are not intentionally designed, officially designated, or maintained and may conflict with conservation goals.

**SYSTEM INVENTORY**

An assessment of publicly owned land used to identify which properties qualify as open space based on adopted definitions. A system inventory helps clarify what is officially included in the open space system and informs future planning.

---

**TRAIL**

A designated linear path or corridor—natural or paved—intended for walking, hiking, biking, or other forms of non-motorized recreation and transportation. Trails may be located within parks, open space, or natural areas and serve to connect people with destinations, nature, and neighborhoods.

---

**VISITATION**

The use of an open space property by the public for recreational, educational, or contemplative purposes. Visitation can be active (e.g., walking, biking, running) or passive (e.g., wildlife viewing, photography, quiet reflection) and may occur on designated trails or scenic overlooks depending on public access guidelines.

---

**WAYFINDING**

A coordinated system of signs, maps, and markers that help visitors navigate open space properties and trails.

**WILDLIFE TRAIL**

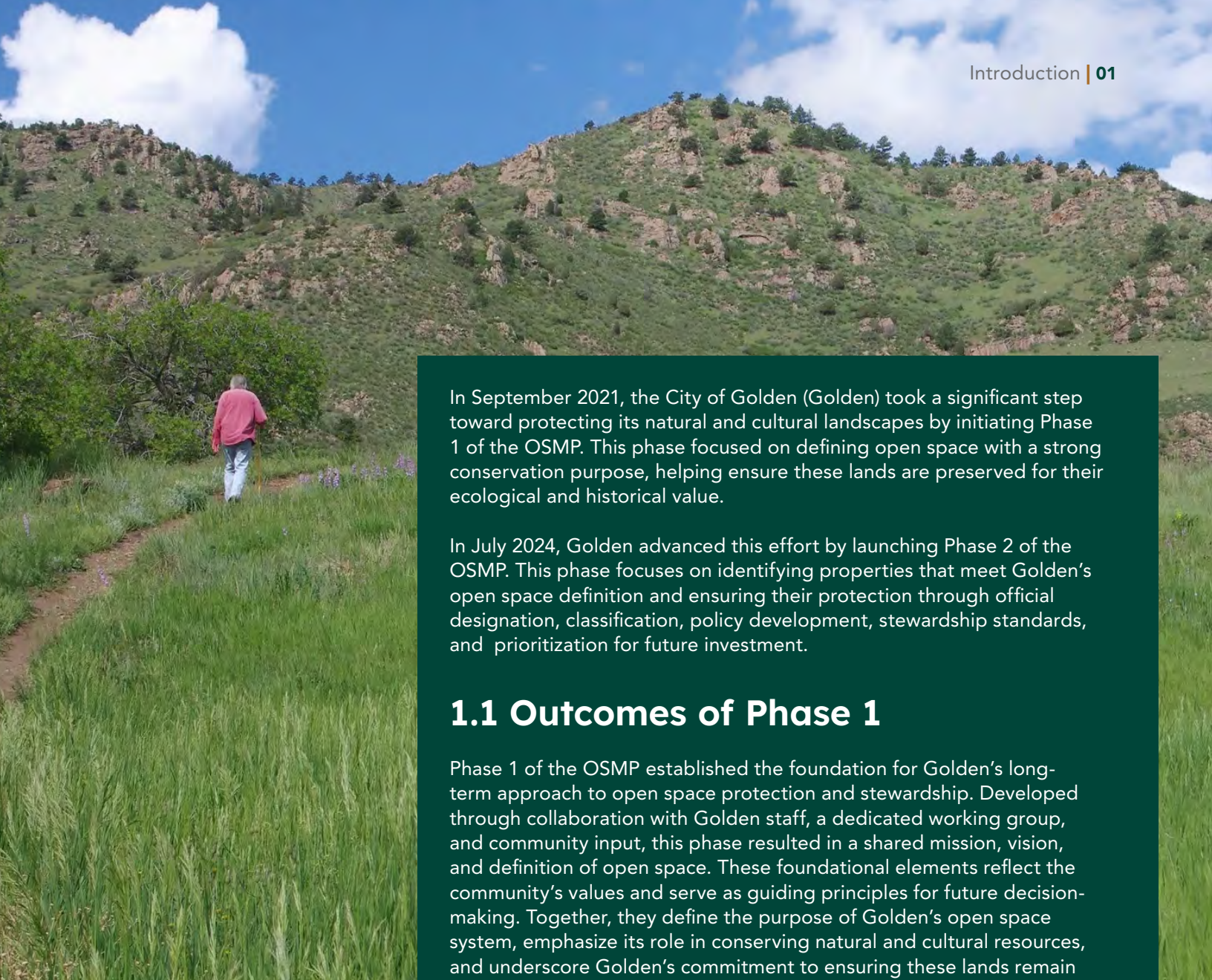
A naturally formed path created by the repeated movement of animals through a landscape. Wildlife trails are not maintained or used by people and typically indicate animal travel routes, habitat corridors, or foraging behavior. They are distinct from human-created trails such as social or designated trails.

01



# INTRODUCTION





In September 2021, the City of Golden (Golden) took a significant step toward protecting its natural and cultural landscapes by initiating Phase 1 of the OSMP. This phase focused on defining open space with a strong conservation purpose, helping ensure these lands are preserved for their ecological and historical value.

In July 2024, Golden advanced this effort by launching Phase 2 of the OSMP. This phase focuses on identifying properties that meet Golden's open space definition and ensuring their protection through official designation, classification, policy development, stewardship standards, and prioritization for future investment.

## 1.1 Outcomes of Phase 1

Phase 1 of the OSMP established the foundation for Golden's long-term approach to open space protection and stewardship. Developed through collaboration with Golden staff, a dedicated working group, and community input, this phase resulted in a shared mission, vision, and definition of open space. These foundational elements reflect the community's values and serve as guiding principles for future decision-making. Together, they define the purpose of Golden's open space system, emphasize its role in conserving natural and cultural resources, and underscore Golden's commitment to ensuring these lands remain protected for generations to come.

### MISSION STATEMENT

To conserve, preserve, and steward Golden's open spaces to support the health of these spaces and enrich the quality of life for Golden's residents and visitors, through meaningful connection to nature and natural areas, today and in the future.

### VISION STATEMENT

To provide a high quality, diversified open space system that supports the natural world, history, and people to foster an enduring legacy of wonder.

### DEFINITION OF OPEN SPACE

Those lands owned or acquired by the City of Golden, whose purpose is primarily conservation or preservation, and that are managed to maintain, improve, or adapt the ecological and/or historical integrity of the parcel for enjoyment by future generations.

## 1.2 Community and Stakeholder Engagement Summary

To inform Phase 2, a series of engagement activities were conducted to gather input from stakeholders and community members. This included a subject matter expert (SME) working group, stakeholder interviews, a statistically valid survey, a community open house, and online engagement via the Guiding Golden website. Together, these activities helped incorporate a range of perspectives into the plan's direction and reflect the community's values and priorities.

To support development of Phase 2, Golden convened a working group composed of community members with interest and experience in conservation, open space management, and public land use. The group served in an advisory capacity, contributing local knowledge and subject matter expertise to help

shape the plan's direction. Selected through an open application and review process, the group played a key role in evaluating the system inventory, shaping the classification and attribute model and recommending stewardship and policy approaches.

Stakeholder interviews were conducted with designated representatives from local organizations, partner agencies, and open space advocates who were involved in Phase 1 of the OSMP. These conversations revealed strong support for improved collaboration, expanded educational opportunities, wildfire mitigation, and clearer definitions and classifications for open space. Many emphasized the importance of protecting ecological and cultural resources while supporting public access where appropriate.

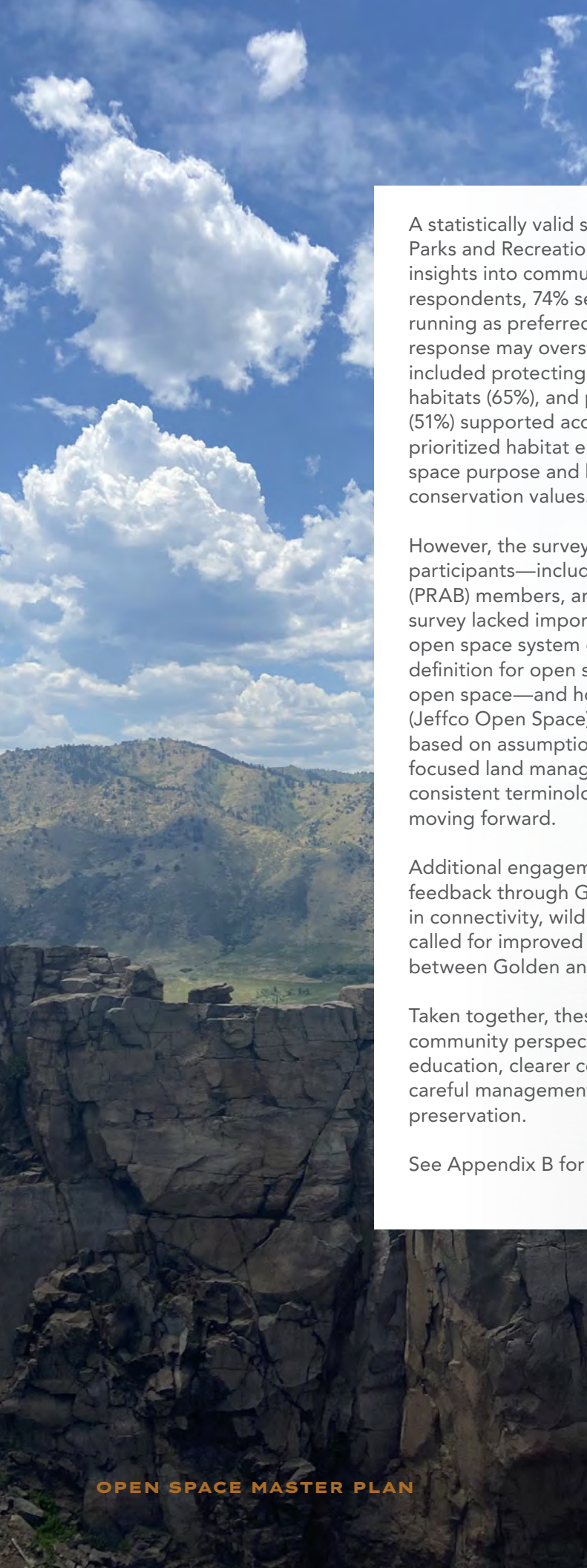
Concerns about the community survey were raised early in the process and should be taken seriously. Many participants—including community members, Golden staff, and some members of PRAB and the working group—felt the survey lacked key context. Specifically, it did not include a visual map of Golden's open space properties or reference Golden's adopted Open Space Mission, Vision, and Definition. These omissions may have led to confusion and influenced how respondents interpreted questions and prioritized their responses.

This challenge reflects a broader issue: without an adopted open space map or clearly defined open space categories, it is difficult to ensure consistent understanding of what constitutes open space versus parks or other types of public land. Many residents are unfamiliar with Golden's open space definition and may associate the term with parks or recreational amenities. In fact, several open space

properties are adjacent to or interwoven with Golden parks and Jeffco Open Space, further complicating public understanding.

As a result, some survey responses may have been shaped by perceptions of park use and amenities rather than the intended focus on conservation, passive visitation, and stewardship. This confusion reinforces the importance of this planning process—particularly the need to publicly define open space, distinguish it from parks, and develop a system inventory and map to support future communication and policy decisions.

Given these limitations, the survey results should be interpreted with caution and viewed as one of several community input tools. Future efforts should prioritize clearer distinctions between open space and parkland in public materials to ensure more informed engagement.



A statistically valid survey—conducted by ETC Institute as part of the broader Parks and Recreation Master Plan (see Appendix A)—provided additional insights into community priorities related to open space. Among the 433 respondents, 74% selected visitation activities such as hiking, biking, and running as preferred open space uses, though the bundled nature of this response may overstate support for any single activity. Other top priorities included protecting open space from development (72%), conserving natural habitats (65%), and preserving waterways like Clear Creek (59%). Just over half (51%) supported acquiring additional open spaces for public use, while 47% prioritized habitat enhancement—suggesting differing interpretations of open space purpose and highlighting the need for ongoing public education around conservation values.

However, the survey results should be interpreted with caution. Many participants—including Golden staff, Parks and Recreation Advisory Board (PRAB) members, and working group participants—raised concerns that the survey lacked important context. It did not include a visual map of Golden’s open space system or reference Golden’s adopted mission, vision, and definition for open space. Without a shared understanding of what qualifies as open space—and how it differs from parks or Jefferson County Open Space (Jeffco Open Space)-managed lands—some respondents may have answered based on assumptions about recreational amenities rather than conservation-focused land management. This reinforces the importance of developing consistent terminology, formal mapping, and public-facing education tools moving forward.

Additional engagement, including an in-person open house and online feedback through Guiding Golden, further emphasized community interest in connectivity, wildlife protection, and long-term stewardship. Participants called for improved maintenance, clearer signage, and stronger coordination between Golden and regional partners.

Taken together, these engagement activities offer valuable insight into community perspectives. They also highlight the need for continued education, clearer communication about the purpose of open space, and careful management of the relationship between public access and ecological preservation.

See Appendix B for additional engagement activity details.

---

# 02

# IDENTIFICATION OF OPEN SPACE PROPERTIES



Golden’s open spaces are essential for conserving natural, historical, and archaeological resources, helping to ensure their protection for future generations. While they support some recreational use, their primary value lies in preservation and stewardship. Many of these areas—such as the Grant Terry Trail Open Space, Kinney Run Open Space, and North Table Mountain Open Space—should be considered by the Colorado Natural Heritage Program (CNHP) for designation as potential conservation areas and in recognition of their ecological importance. Golden’s landscape also reflects its rich scientific and cultural history, with North Hogback Open Space—part of the Morrison-Golden Fossil Areas National Natural Landmark—and the Magic Mountain Open Space, which includes the Magic Mountain Archaeological Site listed on the National Register of Historic Places. Figure 1 displays the relative size and distribution of Golden’s open space properties.



## POTENTIAL CONSERVATION AREA (PCA)

A PCA is a concept developed by the CNHP to identify and prioritize areas with significant ecological, biological, or habitat value. These areas represent places critical for the conservation of rare, threatened, or endangered species, as well as unique ecosystems. PCAs are designed to guide land use planning, conservation efforts, and resource management decisions.

## KEY FEATURES OF PCAS IN COLORADO

### FOCUS ON BIODIVERSITY

PCAs aim to protect areas that support rare plants, animals, and ecological communities, often emphasizing species or habitats that are rare globally or in the state.

### CONSERVATION PRIORITIZATION

Each PCA is assigned a Biodiversity Significance Rank (B1 through B5):

**B1 (OUTSTANDING):**

Irreplaceable sites with global significance

**B2 (VERY HIGH):** Sites of great global or regional importance

**B3 (HIGH):**

Regionally significant sites

**B4 (MODERATE):**

Sites important at the local level

**B5 (GENERAL):** Sites with biodiversity interest but lower conservation urgency

## KEY ELEMENTS ASSESSED

PCAs often focus on:



**RIPARIAN AREAS**  
(streams and wetlands)



**GRASSLANDS**  
(including shortgrass and mixed-grass prairies)



**ALPINE ZONES**



**RARE PLANT HABITATS**



**WILDLIFE CORRIDORS**



## 2.1 Open Space System Inventory

As part of this planning effort, a system inventory was completed to identify which Golden-owned properties align with the City’s adopted definition of open space. This process involved reconciling Golden’s GIS data with mapping and input from the Stewards of Golden Open Space. The resulting system inventory serves as the foundation for understanding and documenting Golden’s open space system.

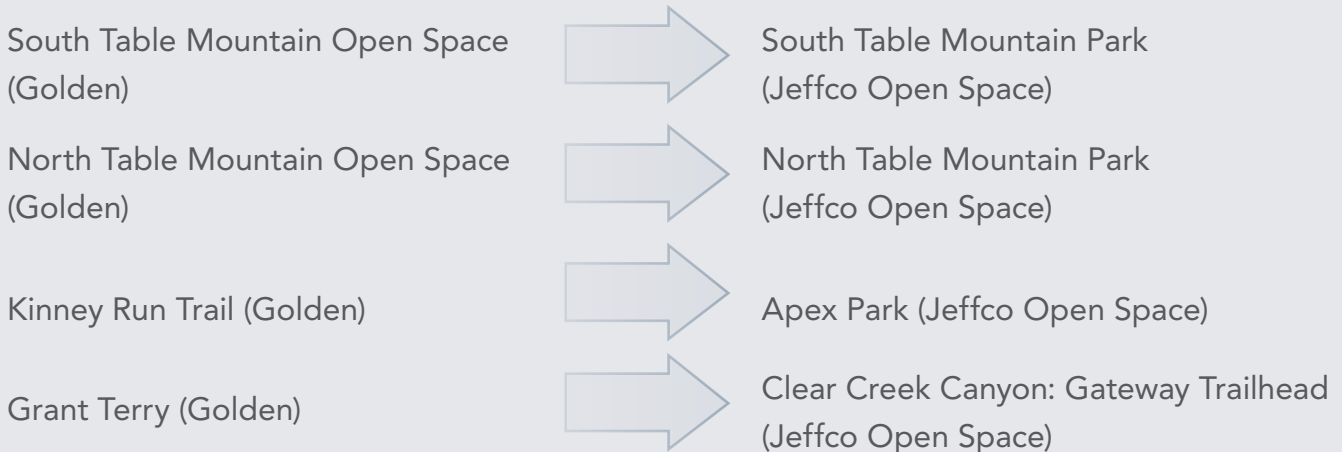
Golden’s open space system encompasses 16 properties spanning 391.44 acres, offering a mix of public access areas and preserved natural landscapes. These properties vary in size and purpose—some prioritize ecological protection, while others provide trails, scenic views, or cultural value.

To help guide future planning, each property is assigned a preliminary set of attributes (e.g., ecological, cultural, scenic) that reflect its defining characteristics, along with a preliminary classification (e.g., Natural Area, Resource Protection Area) indicating its conservation intent and appropriate level of public access. The classification system, along with the listed attributes for each open space, is considered preliminary and should be further evaluated in Phase 3 through a field-based physical and ecological inventory. Full descriptions of the classifications and attribute are provided in Sections 2.2 and 2.3.

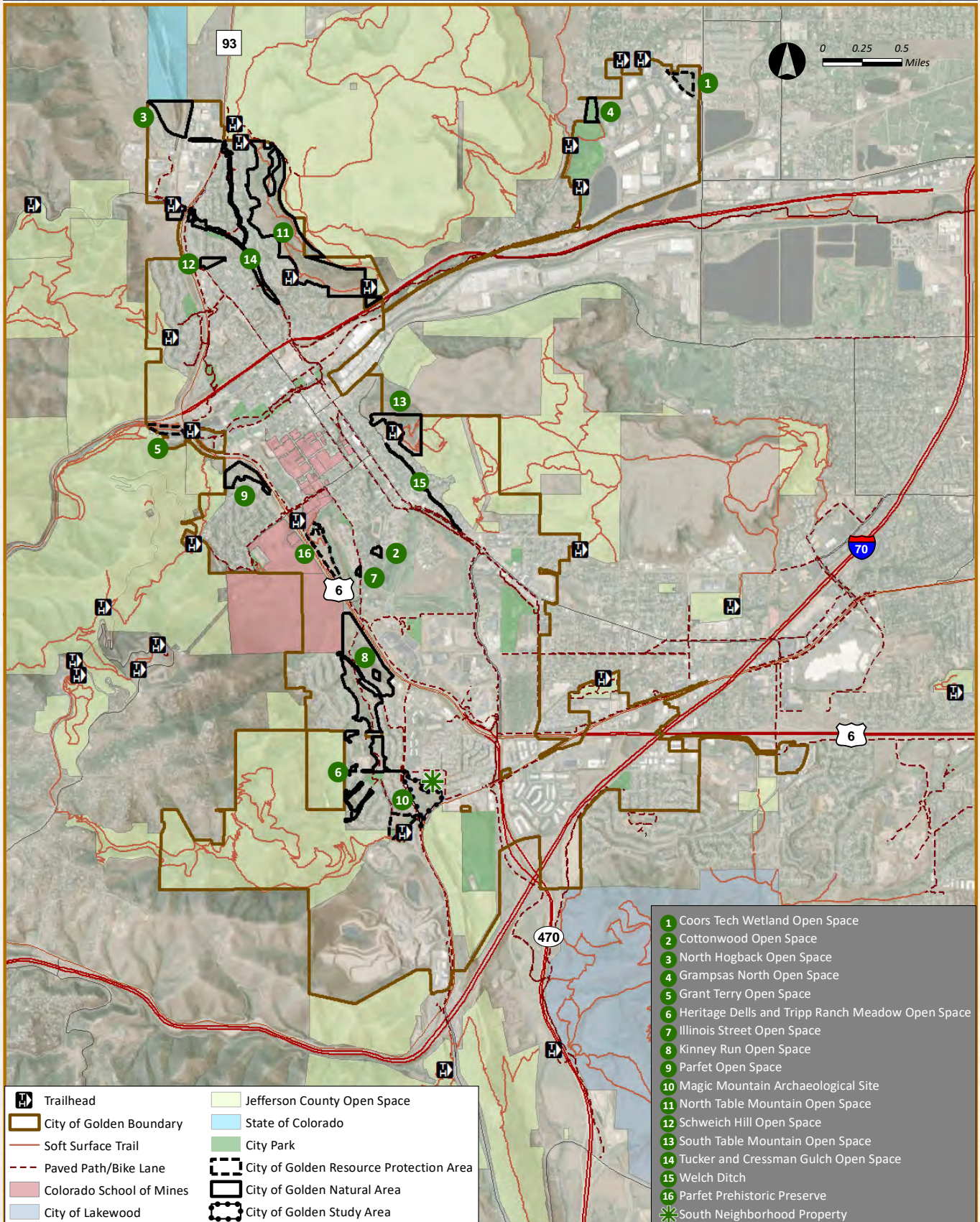
The pages that follow highlight each property’s key features. A summary of all open space properties, including acreage, attributes, public access, and classification, is provided in Appendix C. The classification system, and listed attributes and classifications of each open space are considered preliminary and are recommended for further evaluation during Phase 3, following a field-based physical and ecological inventory.

Golden’s open spaces often serve as key access points to Jeffco Open Space, providing connections to regional trails and natural areas beyond city limits. Many of Golden’s open space properties border or link directly to Jeffco Open Space lands, enhancing recreation opportunities and regional connectivity.

### WELL-KNOWN CONNECTIONS INCLUDE:



# Existing Open Space Map





## Coors Tech Wetland Open Space

Located west of McIntyre Street between Table Mountain Parkway and 50th Avenue, Coors Tech Wetland Open Space is the largest wetland area owned by Golden. It functions as a regional stormwater detention pond, collecting runoff from surrounding areas. The wetland supports native wetland vegetation and provides habitat for wildlife.

**ACRES:** 8.34

**CLASSIFICATION:** Resource Protection Area

**ATTRIBUTES:** Ecological, Passive Visitation

### ACCESS AND TRAILS:

**DESIGNATED PUBLIC ACCESS:** No

**TRAILS:** Social

### KEY FEATURES:

- Wetland vegetation adapted to seasonal water flows
- Habitat for birds and other wildlife

### MANAGEMENT NOTES:

- Primary purpose is flood detention
- Managed in partnership with Mile High Flood Control District
- Regular vegetation clearing and grubbing required to maintain detention pond capacity
- Opportunity as an educational resource for nearby school and residents

# Coors Tech Wetland Open Space





## Cottonwood Open Space

The Cottonwood Open Space is located behind Golden High School and is bordered by Harmony Village, Cottonwood, and Homestead neighborhoods, as well as the Fossil Trace Golf Course. Kinney Run Gulch is adjacent to golf course property, and the area slopes gently into a bowl-like terrain, potentially serving as flood control for Kinney Run Open Space.

**ACRES:** 1.78

**CLASSIFICATION:** Natural Area

**ATTRIBUTES:** Cultural, Ecological, Passive Visitation

### ACCESS AND TRAILS:

**DESIGNATED PUBLIC ACCESS:** No

**TRAILS:** Social

### KEY FEATURES:

- Grasses, shrubs, and established tree canopy
- Wildlife habitat for birds and small mammals

### MANAGEMENT NOTES:

- Adjacent to Welch Ditch, an active irrigation channel with historical value

# Cottonwood Open Space





## Grampsas North Open Space

Golden acquired the land now known as Tony Grampsas Memorial Sports Complex from Jefferson County in 1999. Originally developed by Coors Brewing Company for softball tournaments, the park was named in 2000 after Tony Grampsas, a former Coors employee and advocate for parks. A portion of the land was designated as open space to preserve the natural landscape. This area, known as Grampsas North Open Space, offers a natural setting for wildlife and passive visitation. Bordered by housing to the north and west, and Church Ditch to the east, the site includes grasslands and scattered trees.

**ACRES:** 6.46

**CLASSIFICATION:** Natural Area

**ATTRIBUTES:** Ecological, Passive Visitation, Scenic

### ACCESS AND TRAILS:

**DESIGNATED PUBLIC ACCESS:** Yes

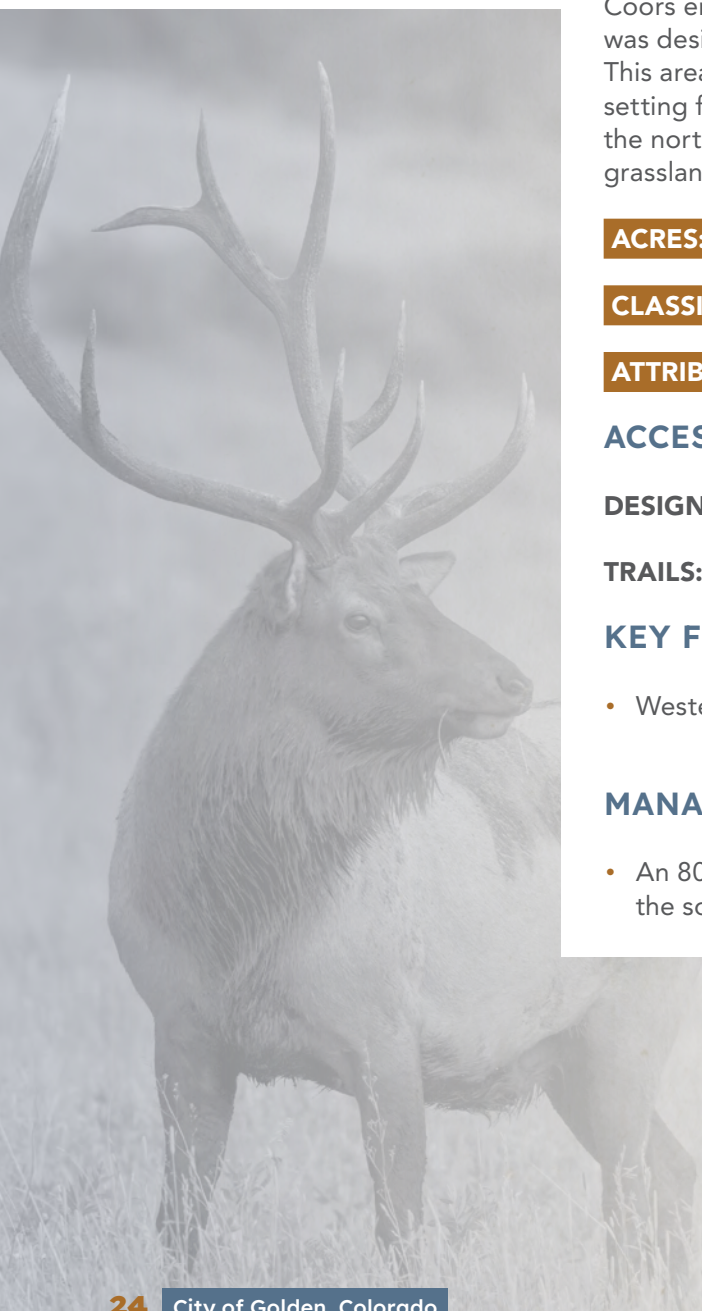
**TRAILS:** Designated

### KEY FEATURES:

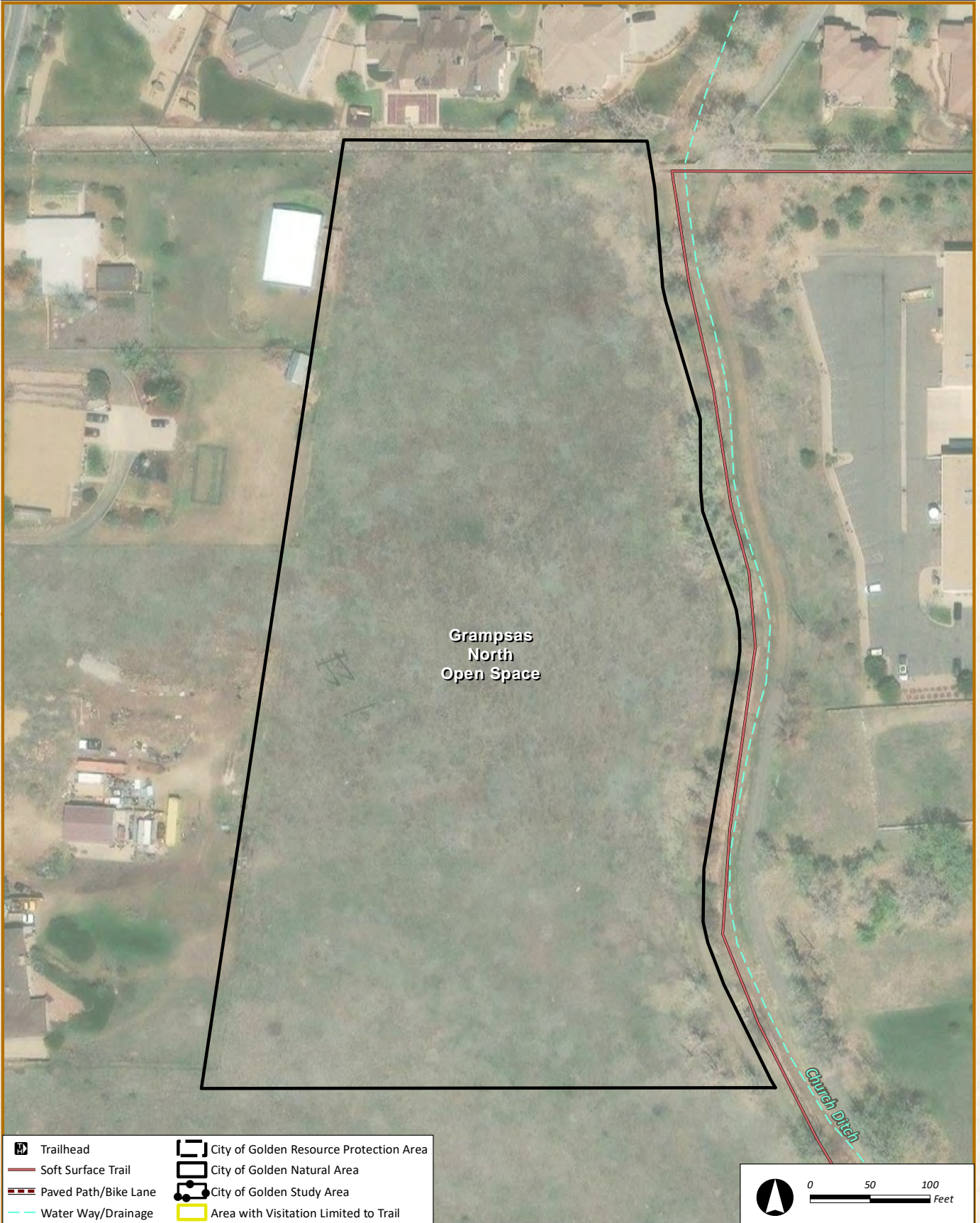
- Western Great Plains grassland
- The space is frequented by deer, elk, rabbits, and hawks

### MANAGEMENT NOTES:

- An 80-foot-wide right-of-way held by Xcel Energy crosses the southwest corner



# Grampsas North Open Space





## Grant Terry Trail Open Space

Grant Terry Trail Open Space is located along Clear Creek and offers a mix of riparian habitat and public access. The site features the Grant Terry Trail, a compact paved path with shaded walking and biking opportunities. It also serves as a connection to the Clear Creek Trail and regional pathways. The open space primarily supports habitat conservation while providing vital ecological corridors.

**ACRES:** 5.89

**CLASSIFICATION:** Resource Protection Area

**ATTRIBUTES:** Ecological, Active Visitation, Scenic

### ACCESS AND TRAILS:

**DESIGNATED PUBLIC ACCESS:** Yes

**TRAILS:** Designated

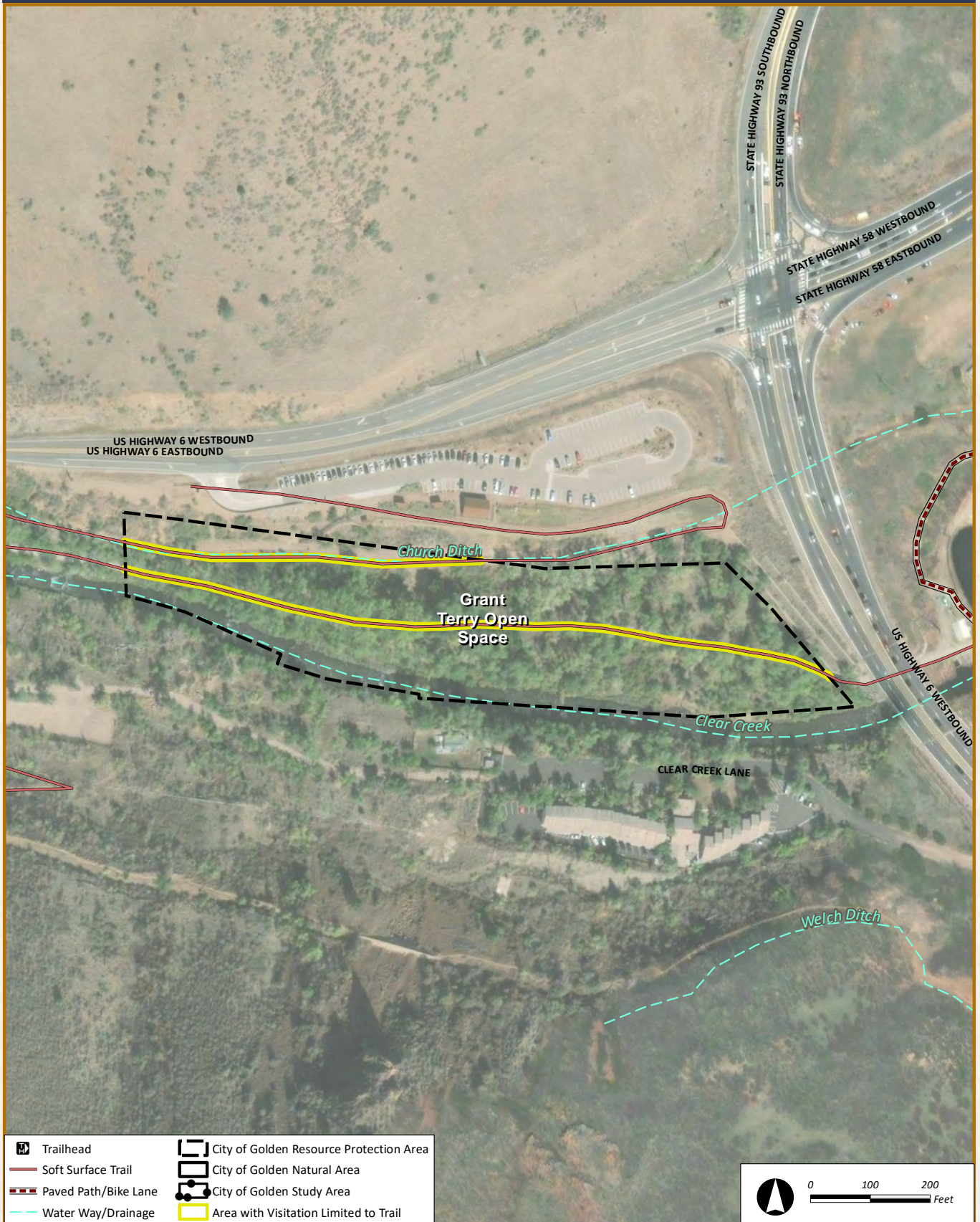
### KEY FEATURES:

- Riparian vegetation and wildlife habitat
- Connection to Clear Creek Trail

### MANAGEMENT NOTES:

- Consider for CNHP PCA designation (B2: Very High Biodiversity Significance)
- Visitation limited to paved trails

# Grant Terry Trail Open Space





## Heritage Dells & Tripp Ranch Meadow Open Spaces

The Heritage Dells and Tripp Ranch Meadow Open Spaces encompass three primary gulches—South Heritage Dells Gulch, Middle Dells Gulch, and North Heritage Dells Gulch—along with the Tripp Ranch Meadows Open Space and its small connecting gulch. These gulches contribute to the headwaters of the Kinney Run waterway, which ultimately flows into Clear Creek. Formed over thousands of years by seasonal rainfall and snowmelt, the gulches serve as natural drainage corridors and provide important ecological buffers within the surrounding neighborhood. Tripp Ranch residents enjoy expansive views of native Foothills grasslands from the open meadow area.

**ACRES:** 7.66

**CLASSIFICATION:** Natural Area

**ATTRIBUTES:** Ecological, Passive Visitation, Scenic

### ACCESS AND TRAILS:

**DESIGNATED PUBLIC ACCESS:** No

**TRAILS:** Social

### KEY FEATURES:

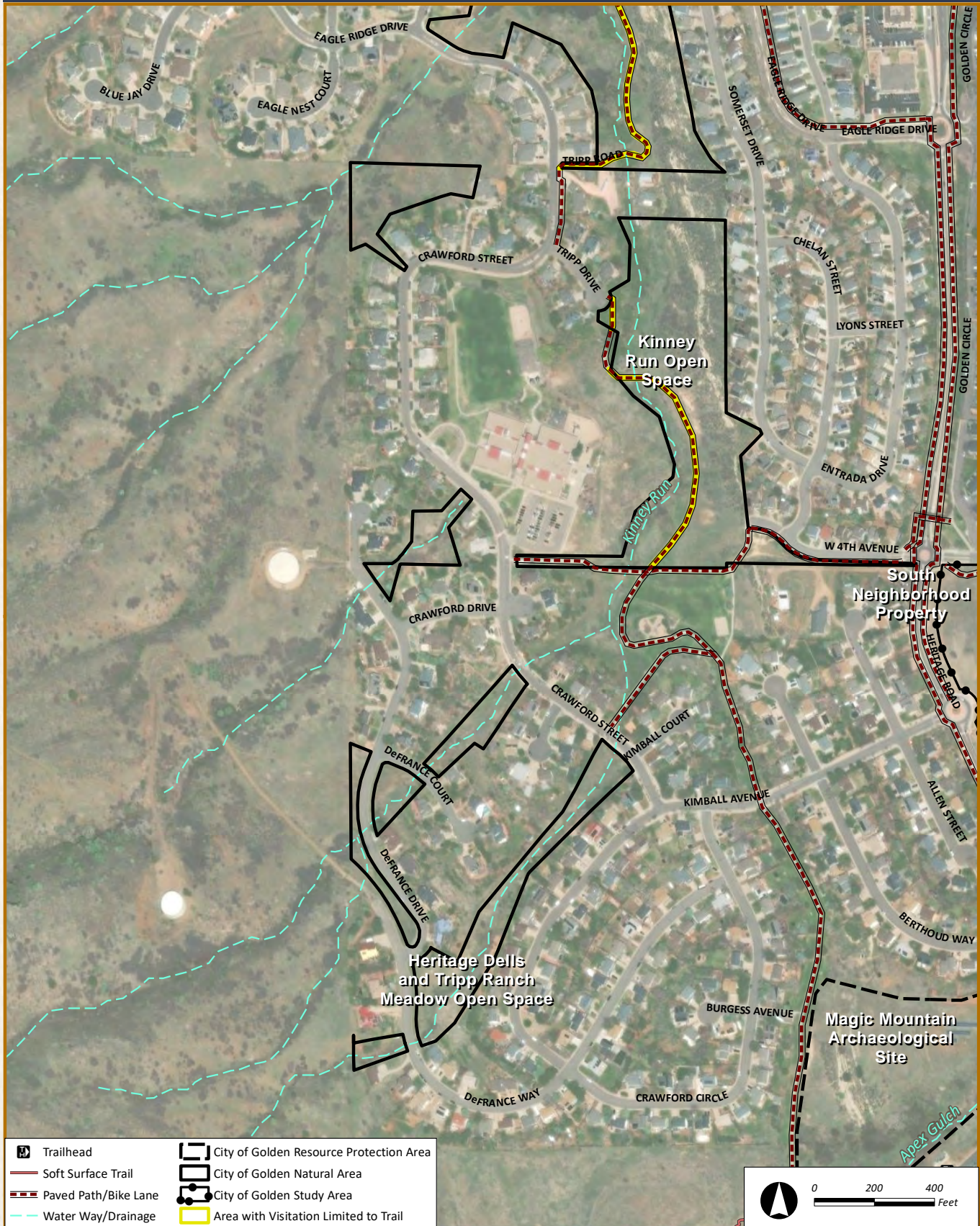
- Riparian vegetation
- Watershed preservation
- Wildlife corridor

### MANAGEMENT NOTES:

- Natural drainageway – Ongoing monitoring may be necessary to manage erosion, preserve grade control, and maintain streambank stability.



# Heritage Dells & Tripp Ranch Meadow Open Spaces



## Illinois Street Open Space

The Illinois Street Open Space is a small urban area located at the east end of Illinois Street, adjacent to Fossil Trace Golf Course. Spearheaded by Harmony Village residents, the land was acquired to preserve its unique 360-degree scenic views from the top of a knoll. A short, winding dirt trail leads to the knoll, which offers views of the Foothills, North and South Table Mountains, and clear night skies.

**ACRES:** 0.79

**CLASSIFICATION:** Natural Area

**ATTRIBUTES:** Active Visitation, Passive Visitation, Scenic

### ACCESS AND TRAILS:

**DESIGNATED PUBLIC ACCESS:** Yes

**TRAILS:** Designated

### KEY FEATURES:

- Wildlife habitat

### MANAGEMENT NOTES:

- Located near the historic Rockwell Clay Mine

# Illinois Street Open Space



# Kinney Run Open Space

Kinney Run Open Space, established in 1998 as part of the Eagle Ridge subdivision, was designated to preserve wildlife habitat and natural areas in the southern part of Golden. A paved trail runs north-south through the space, connecting south Golden neighborhoods to downtown Golden. It is home to diverse vegetation and wildlife and features remnants of historic transportation and industrial activity.

**ACRES:** 87.98

**CLASSIFICATION:** Natural Area

**ATTRIBUTES:** Cultural, Ecological, Active Visitation, Passive Visitation, Scenic

## ACCESS AND TRAILS:

**DESIGNATED PUBLIC ACCESS:** Yes

**TRAILS:** Designated

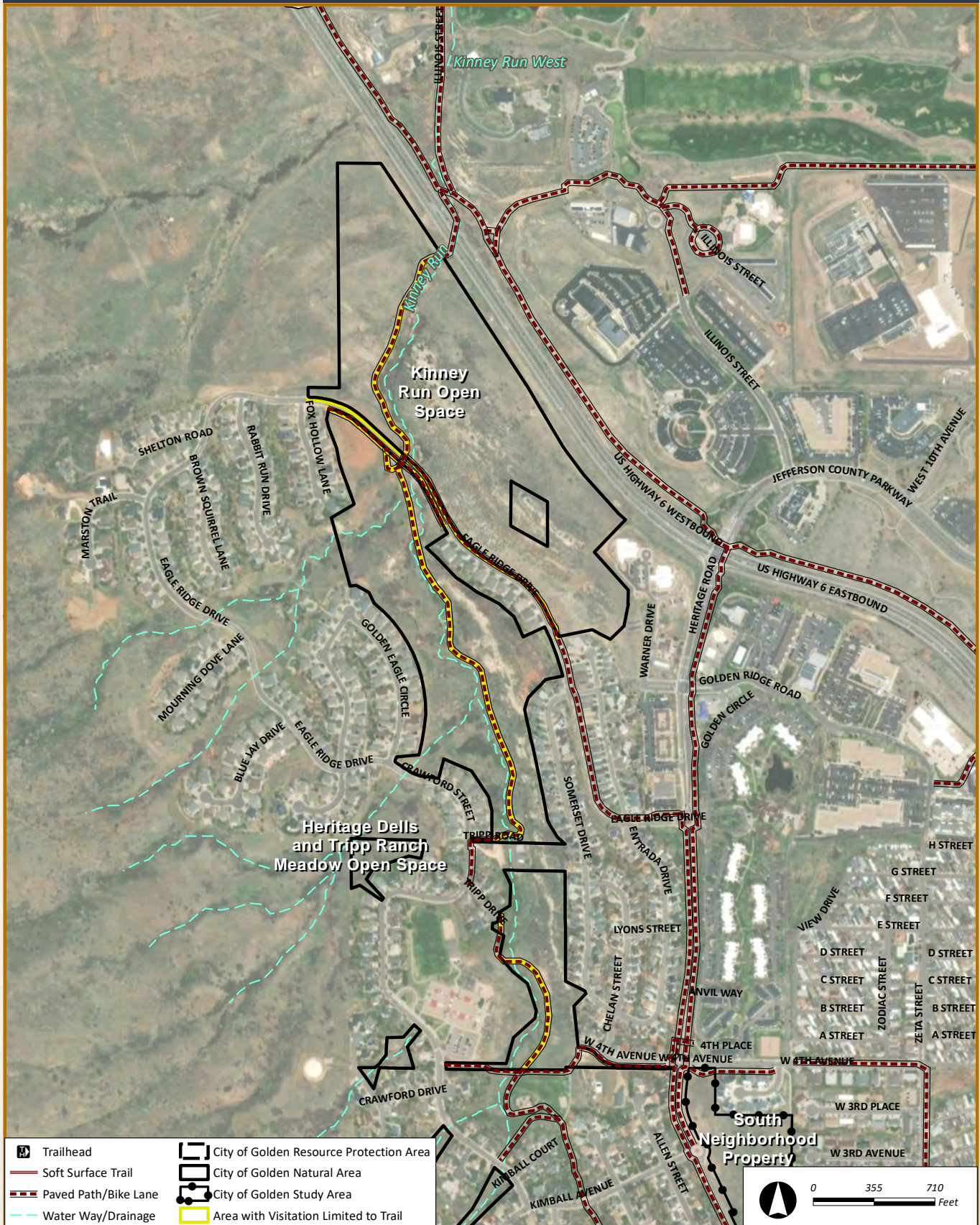
## KEY FEATURES:

- Historic lime kiln (Cambria Lime Kiln) and wagon road remnants
- Rich biodiversity and native vegetation
- Important geologic formations and landform areas
- Educational resource for local institutions
- Watersheds and riparian corridors
- Habitat preservation corridors

## MANAGEMENT NOTES:

- Designated as a unique educational property by City Resolution 1573
- Public access limited to designated trail
- Consider for CNHP PCA designation (B3: High Biodiversity Significance)

# Kinney Run Open Space





## Magic Mountain Archaeological Site

The Magic Mountain Archaeological Site is located between Fire Station No. 24 and the Kinney Run Trail. It is a historically significant area that was once home to the Magic Mountain amusement park. Excavations in 1959 – 1960 revealed early artifacts from Indigenous presence, and in 1980, the site was listed on the National Register of Historic Places. It has scenic views, rock outcroppings, and is recognized as an educational resource.

**ACRES:** 16.2

**CLASSIFICATION:** Resource Protection Area

**ATTRIBUTES:** Cultural, Ecological, Passive Visitation, Scenic

### ACCESS AND TRAILS:

**DESIGNATED PUBLIC ACCESS:** No

**TRAILS:** Social

### KEY FEATURES:

- Archaeological evidence of early ceramic period inhabitants
- Educational potential for cultural history
- Rock outcroppings and scenic terrain

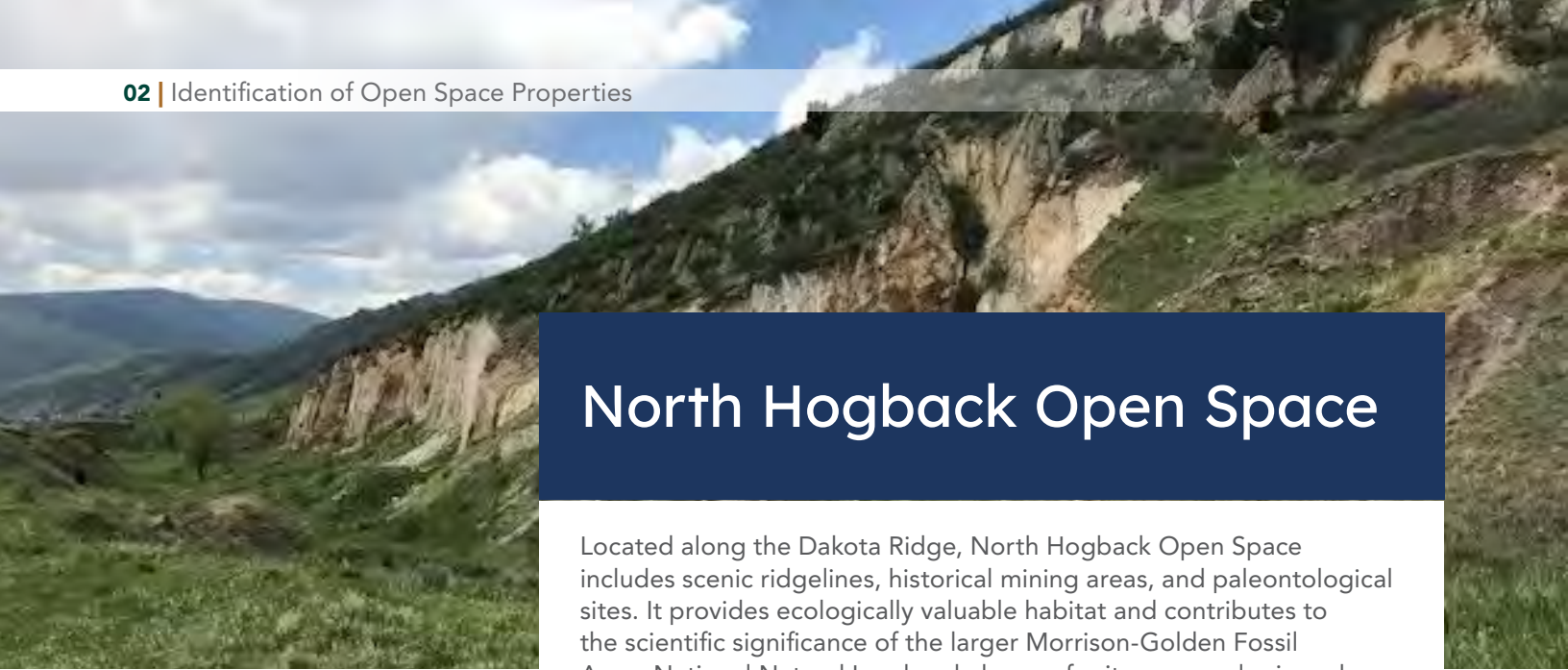
### MANAGEMENT NOTES:

- Site is used for educational research
- Public access prohibited to protect archaeological resources
- Listed on the National Register of Historic Places (1980)



# Magic Mountain Archaeological Site





## North Hogback Open Space

Located along the Dakota Ridge, North Hogback Open Space includes scenic ridgelines, historical mining areas, and paleontological sites. It provides ecologically valuable habitat and contributes to the scientific significance of the larger Morrison-Golden Fossil Areas National Natural Landmark, known for its rare geologic and paleontological features.

**ACRES:** 28.45

**CLASSIFICATION:** Natural Area

**ATTRIBUTES:** Cultural, Ecological, Paleontological, Passive Visitation, Scenic

### ACCESS AND TRAILS:

**DESIGNATED PUBLIC ACCESS:** No

**TRAILS:** Social

### KEY FEATURES:

- Dakota Group geological formation
- Historic fossil discovery site
- Native grasslands and scenic topography
- Geological and ecological preservation

### MANAGEMENT NOTES:

- Includes areas identified for potential CO 93 realignment
- Part of the Morrison-Golden Fossil Areas National Natural Landmark



# North Hogback Open Space



# North Table Mountain Open Space

Located on the southwest slope of North Table Mountain, this open space offers beautiful views of the Golden Valley and borders Jeffco Open Space and local neighborhoods. It includes trail connections and geological interest, including volcanic rock formations and former quarry activity.

**ACRES:** 134.67

**CLASSIFICATION:** Natural Area

**ATTRIBUTES:** Cultural, Ecological, Active Visitation, Passive Visitation, Scenic

## ACCESS AND TRAILS:

**DESIGNATED PUBLIC ACCESS:** Yes

**TRAILS:** Designated and Social

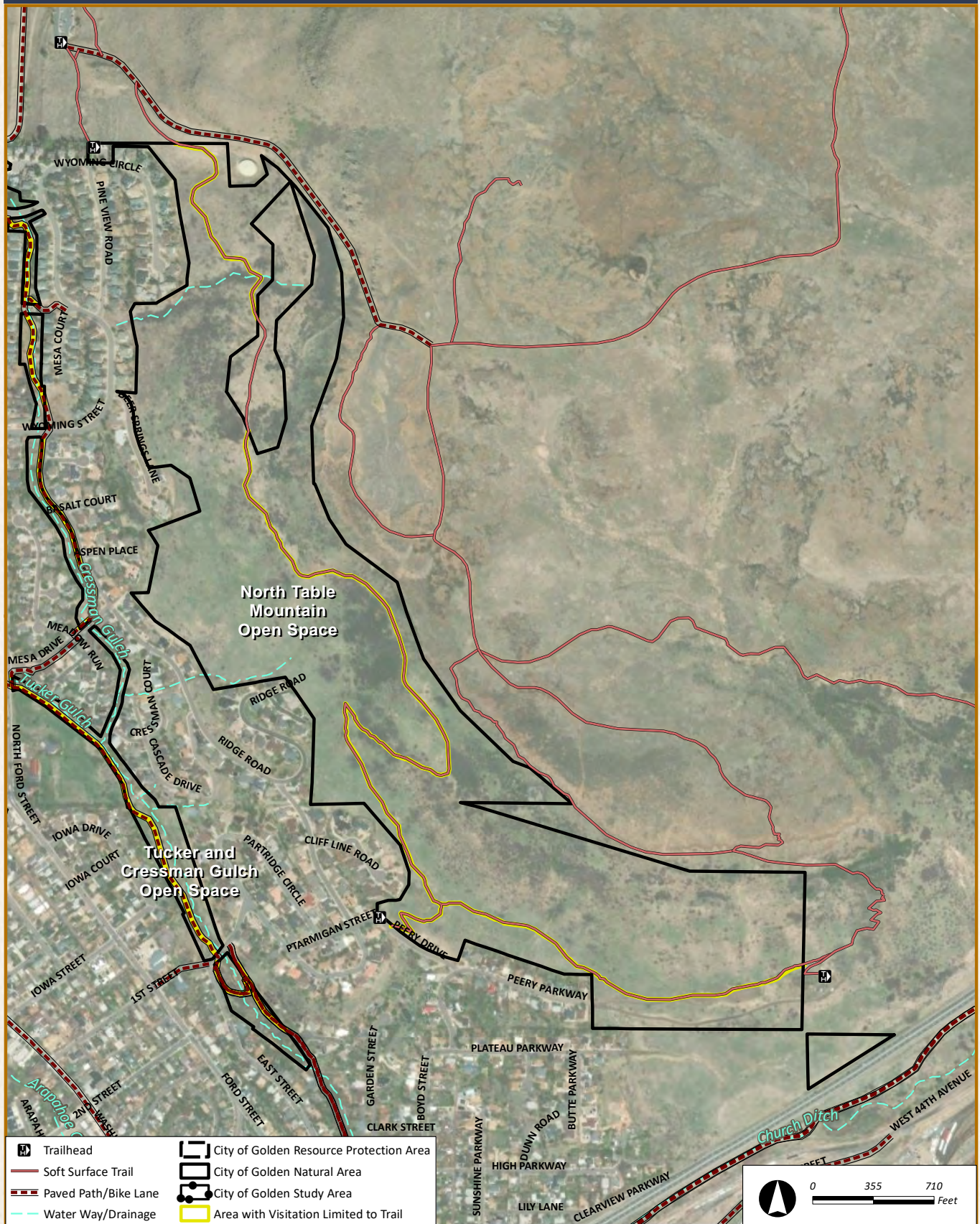
## KEY FEATURES:

- Volcanic lava flows and shrublands
- Former quarry
- Geological and ecological education opportunities
- Trail-based recreation
- Ecological conservation

## MANAGEMENT NOTES:

- Public access limited to designated trail
- Consider for CNHP PCA designation (B3: High Biodiversity Significance)

# North Table Mountain Open Space





## Parfet Open Space

Parfet Open Space wraps around the north end of the Parfet Estates neighborhood, overlooking 6th Avenue and bordering the Colorado School of Mines natural area. It provides a trail connection to the Chimney Gulch Trail (Jeffco Open Space) and has scenic and historic value.

**ACRES:** 13.67

**CLASSIFICATION:** Natural Area

**ATTRIBUTES:** Active Visitation, Passive Visitation, Scenic

### ACCESS AND TRAILS:

**DESIGNATED PUBLIC ACCESS:** Yes

**TRAILS:** Designated and Social

### KEY FEATURES:

- Unmarked trailhead to Chimney Gulch Trail
- Historic Chimney Gulch Toll Road corridor

### MANAGEMENT NOTES:

- Serves as trail access and hang glider landing site
- Consider for CNHP PCA (B3: High Biodiversity Significance)

# Parfet Open Space





## Parfet Prehistoric Preserve

The Parfet Prehistoric Preserve is a culturally and scientifically significant site located near the western edge of Golden. The area includes portions of the fossil-rich Laramie Formation, with evidence of prehistoric plant and animal life, including dinosaur tracks and invertebrate trace fossils. Within the preserve is Triceratops Trail, an interpretive path that showcases visible fossilized tracks and impressions, offering a unique opportunity for public engagement with Golden's paleontological history. This site highlights the geological and scientific significance of the area. Although access is currently limited to foot and bicycle traffic, with minimal available parking, the site remains a vital part of Golden's heritage landscape and a priority for long-term preservation.

**ACRES:** 14.08

**CLASSIFICATION:** Natural Area

**ATTRIBUTES:** Cultural, Ecological, Active Visitation, Passive Visitation, Scenic

### ACCESS AND TRAILS:

**DESIGNATED PUBLIC ACCESS:** Yes

**TRAILS:** Designated

### KEY FEATURES:

- Fossil beds with dinosaur tracks and ancient plant impressions
- Part of the Morrison-Golden Fossil Areas National Natural Landmark
- Scenic views of surrounding ridgelines and rock outcroppings

### MANAGEMENT NOTES:

- Triceratops Trail is open to the public and managed for educational and visitation
- Triceratops Trail is managed by the Friends of Dinosaur Ridge in partnership with City
- Fossils and geological features are fragile and should not be disturbed
- Part of the Morrison-Golden Fossil Areas National Natural Landmark
- Coordination with scientific and educational institutions is encouraged to support preservation and interpretation
- Ongoing preservation efforts are supported through coordination between Friends of Dinosaur Ridge and the City of Golden.

# Parfet Prehistoric Preserve





## Schweich Hill Open Space

Designated in 1993, Schweich Hill Open Space is located in North Golden and bordered by neighborhoods and a small commercial district. It features an intact remnant of mixed-grass prairie with native plants and offers scenic views.

**ACRES:** 3.94

**CLASSIFICATION:** Natural Area

**ATTRIBUTES:** Ecological, Active Visitation, Passive Visitation, Scenic

### ACCESS AND TRAILS:

**DESIGNATED PUBLIC ACCESS:** No

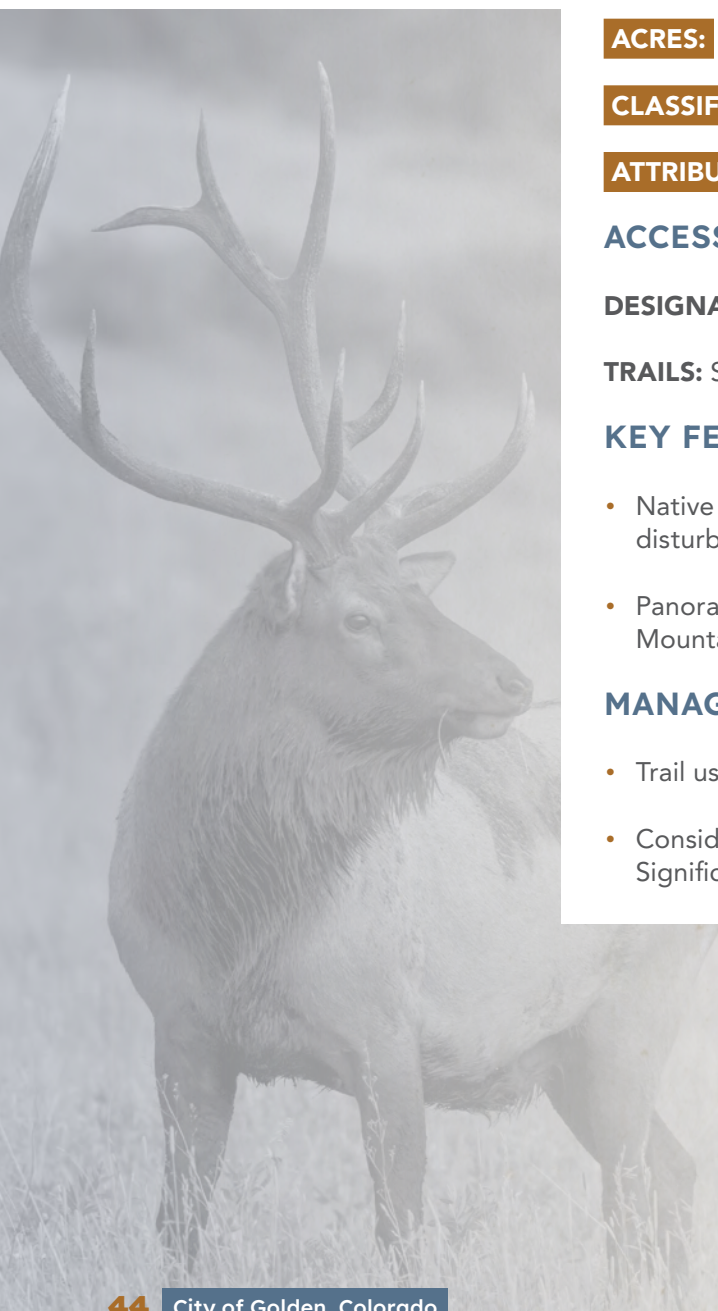
**TRAILS:** Social

### KEY FEATURES:

- Native prairie with minimal disturbance
- Panoramic views of Table Mountains and foothills
- Popular for walking and neighborhood access

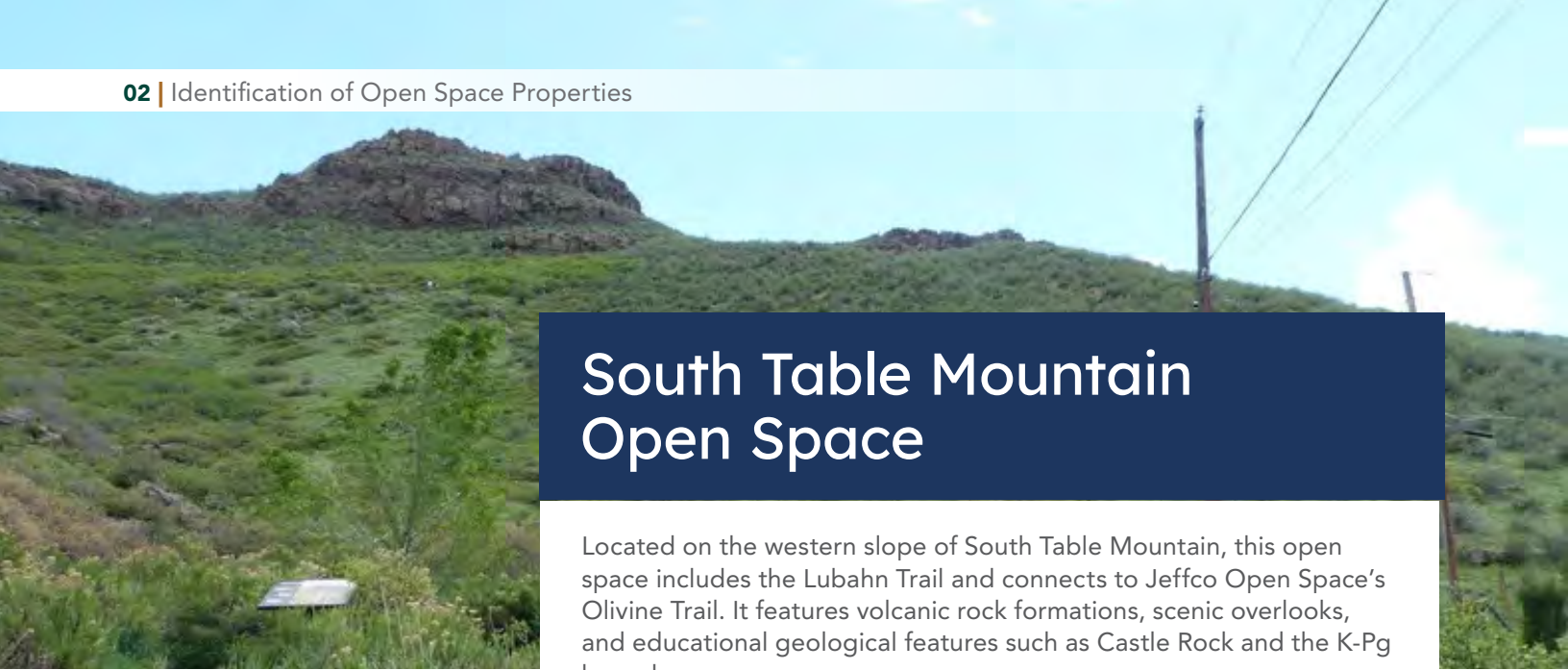
### MANAGEMENT NOTES:

- Trail use poses risk to sensitive vegetation and native plants
- Consider for CNHP PCA designation (B3: High Biodiversity Significance)



# Schweich Hill Open Space





## South Table Mountain Open Space

Located on the western slope of South Table Mountain, this open space includes the Lubahn Trail and connects to Jeffco Open Space's Olivine Trail. It features volcanic rock formations, scenic overlooks, and educational geological features such as Castle Rock and the K-Pg boundary.

**ACRES:** 26.53

**CLASSIFICATION:** Natural Area

**ATTRIBUTES:** Cultural, Ecological, Active Visitation, Passive Visitation, Scenic

### ACCESS AND TRAILS:

**DESIGNATED PUBLIC ACCESS:** Yes

**TRAILS:** Designated

### KEY FEATURES:

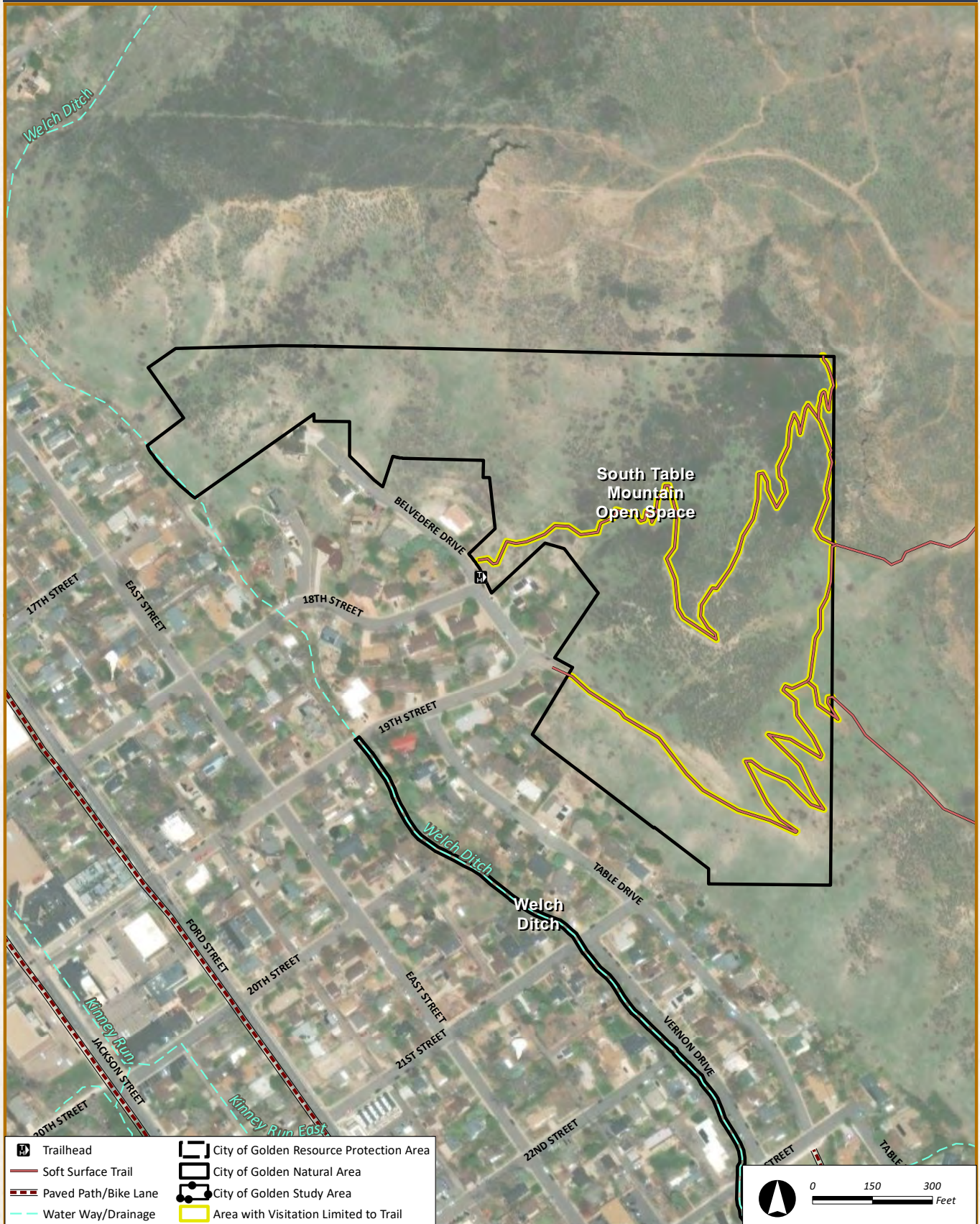
- Volcanic formations and panoramic views
- Connection to larger Jeffco Open Space system
- K-Pg boundary and historic fossil findings
- Geological preservation
- Scenic hiking and trail connectivity

### MANAGEMENT NOTES:

- Trail erosion control and maintenance required
- Visitation limited to designated trails
- Consider for CNHP PCA designation (B1: Irreplaceable Site With Global Significance)



# South Table Mountain Open Space





## Tucker and Cressman Gulch Open Space

This linear open space follows the natural waterways of Tucker and Cressman Gulch, forming an urban green corridor that supports flood management, wildlife, and trail connectivity. It includes paved trails, historical markers, and educational opportunities.

**ACRES:** 35

**CLASSIFICATION:** Natural Area

**ATTRIBUTES:** Ecological, Active Visitation, Passive Visitation

### ACCESS AND TRAILS:

**DESIGNATED PUBLIC ACCESS:** Yes

**TRAILS:** Designated

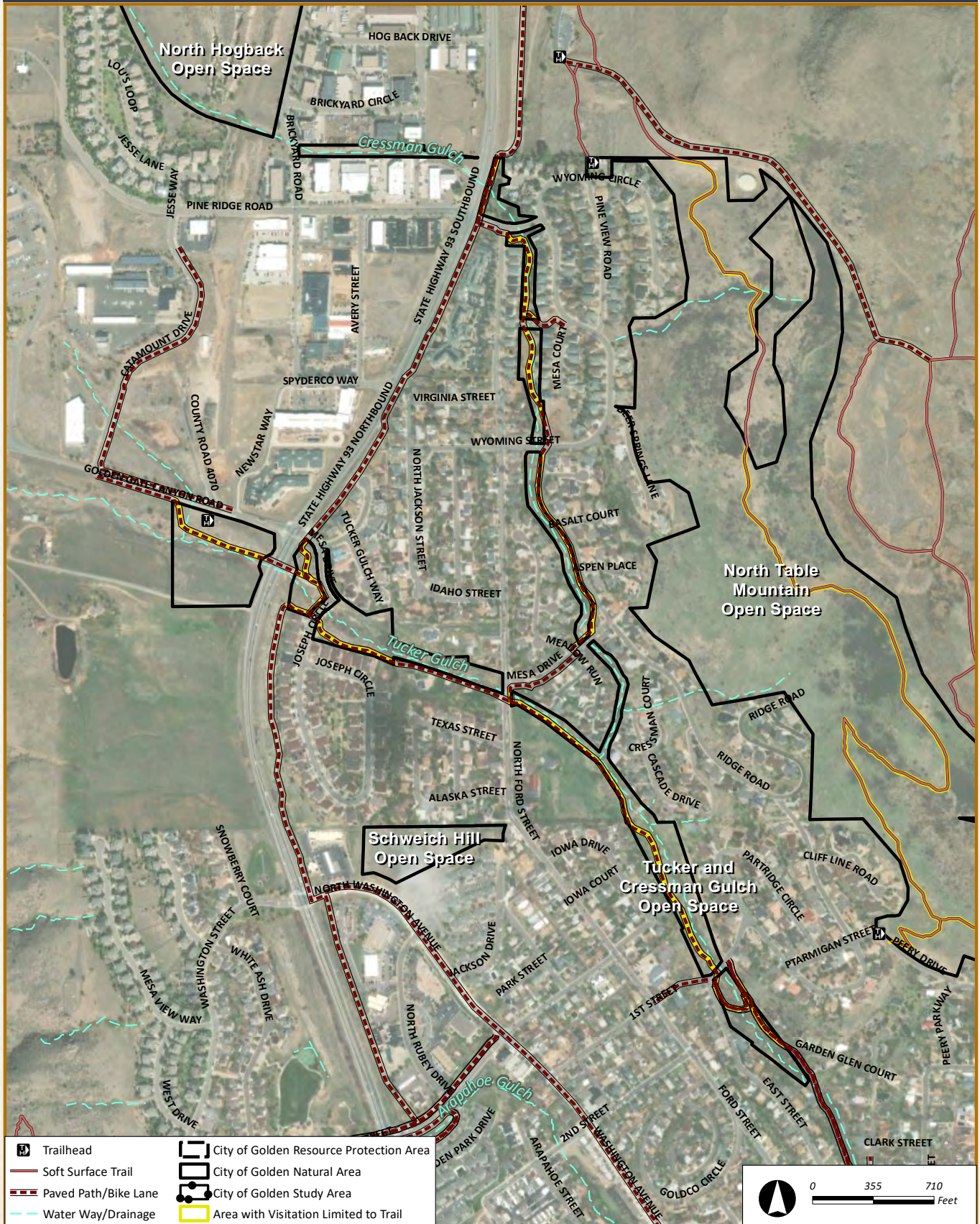
### KEY FEATURES:

- Riparian corridors and floodplain function
- Stormwater conveyance and linear greenway
- Historical and cultural value of wagon routes
- Neighborhood access and trail connection
- Supports bird and small mammal species

### MANAGEMENT NOTES:

- Trail corridor includes infrastructure improvements for flood control
- Erosion and vegetation maintenance within stormwater drainageways are essential for effective flow conveyance, sediment control, and ecological health.
- Visitation limited to paved trails

# Tucker and Cressman Gulch Open Space





## Welch Ditch

Welch Ditch is a historic irrigation structure built in the 1870s that runs along the south side of Clear Creek. Though no longer in use, remnants of the wooden flume are visible and offer historical interpretation opportunities.

**ACRES:** N/A

**CLASSIFICATION:** Natural Area

**ATTRIBUTES:** Cultural, Ecological, Passive Visitation

### ACCESS AND TRAILS:

**DESIGNATED PUBLIC ACCESS:** No

**TRAILS:** No

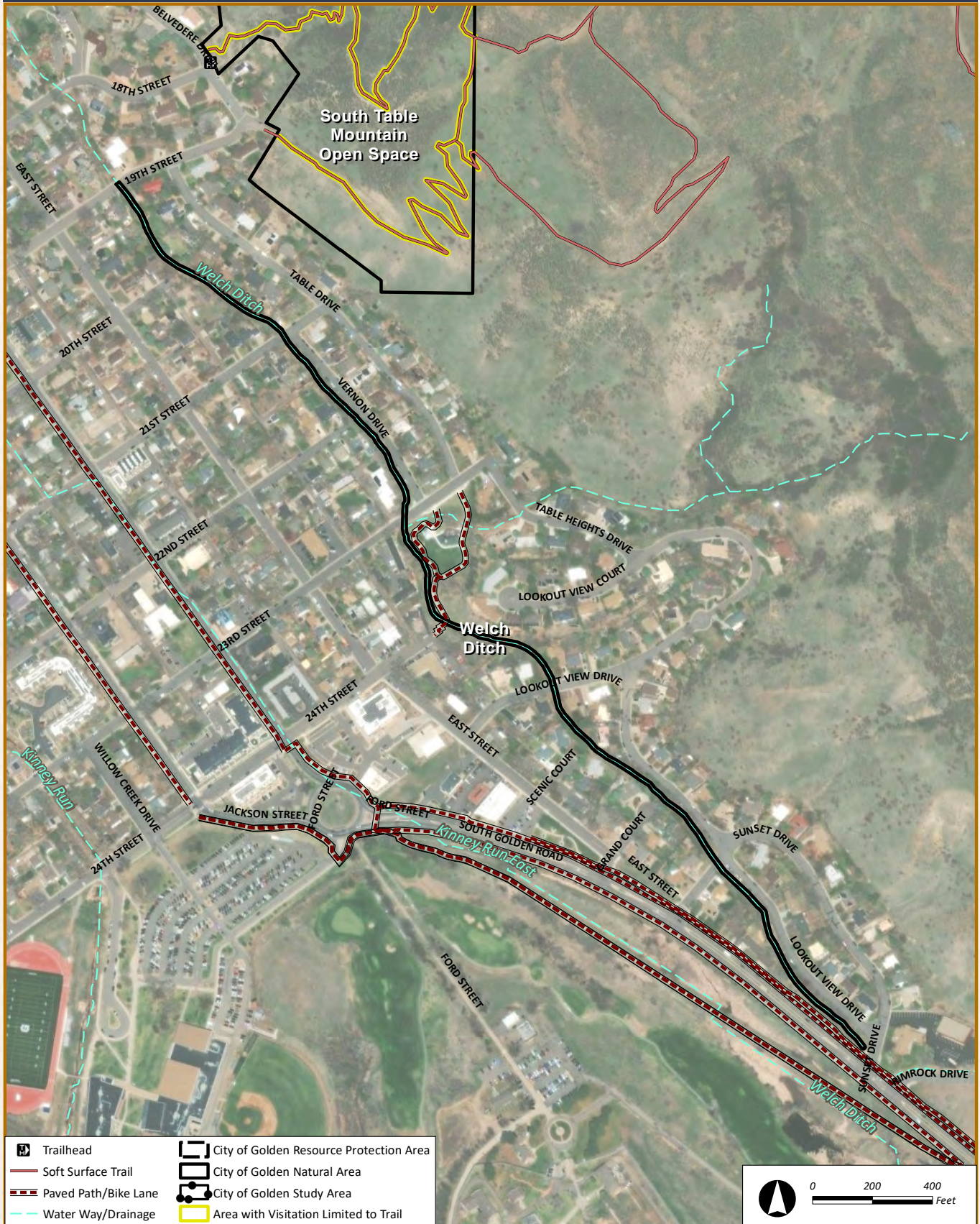
### KEY FEATURES:

- Remnants of historic irrigation flume
- Located within scenic Clear Creek corridor
- Contributes to historical character of Golden
- Historic irrigation infrastructure preservation

### MANAGEMENT NOTES:

- Preserved as cultural resource; interpretive signage recommended
- No public access except where designated trails cross the ditch
- Erosion and vegetation maintenance within stormwater drainageways are essential for effective flow conveyance, sediment control, and ecological health.

# Welch Ditch



## 2.2 Classification Model

This plan introduces a clear classification model that distinguishes properties by their intended level of public use and resource sensitivity. All properties will be managed to the same high conservation standard, emphasizing habitat protection, native vegetation, and long-term ecological health.

These classifications are intended to clearly communicate where public access is permitted or limited. This approach supports transparency, reinforces conservation priorities, and helps the community understand how each area is intended to be experienced and protected.

### Resource Protection Area

**PURPOSE:** To conserve ecologically or culturally sensitive areas where minimizing human disturbance is essential.

**PUBLIC ACCESS:** Public access is highly restricted to protect sensitive and irreplaceable resources. Where access is provided (such as a paved trail), it is carefully designed and limited to prevent disturbance. Off-trail use is not permitted under any circumstances.

**NATURAL RESOURCES:** High-value ecological areas, including habitat for threatened or endangered species, riparian corridors, or sites with cultural or geological significance.

### Natural Area

**PURPOSE:** To balance native plant, habitat and ecosystem protection with appropriate public access.

**PUBLIC ACCESS:** Access is permitted only in ways that minimize impact on natural resources. Visitors must stay on designated trails where provided. In areas without designated trails, use should be restricted and carefully managed to avoid degrading the environment.

**NATURAL RESOURCES:** Includes diverse habitat types that support wildlife and native vegetation, as well as areas valued for visitation, education, and scenic views.

In addition to the primary open space classifications—Resource Protection Areas and Natural Areas—some locations may require supplemental designations to address unique environmental, safety, or infrastructure needs. These designations are not separate classifications but serve as management tools that apply to specific areas within the open space system.

They will be applied at the discretion of City staff on an as-needed basis and may change over time based on evolving conditions, project needs, or restoration priorities.

**HABITAT RESTORATION:** Areas identified as ecologically degraded, where long-term restoration of native habitat is a management priority.

**STUDY AREAS:** Newly acquired, undeveloped, or transition areas where research and planning efforts are prioritized before determining long-term management strategies.

**AREA OR TRAIL CLOSURES:** Areas and trails temporarily or permanently closed to the public due to safety concerns, hazardous conditions, or resource protection efforts.

**STORMWATER MANAGEMENT:** Functional landscape areas where stormwater conveyance is a priority, often managed in coordination with the Public Works and Stormwater Management Departments to support ecological and recreational values.

**WILDFIRE MITIGATION:** Areas where actions to reduce wildfire risk, such as vegetation thinning and fuel reduction, are prioritized in collaboration with the Fire Mitigation Committee.

These designations provide the City with the flexibility to manage open space lands responsively while maintaining consistent conservation standards.

## 2.3 Attributes

Open space attributes are the defining characteristics that make a property valuable for preservation and public benefit. With input from Golden staff and the Working Group, six key attributes were identified to reflect the values and priorities of the community. These include ecological and cultural qualities as well as opportunities for passive or active public enjoyment.

The attributes serve two key purposes:

- To inform future open space designation and acquisition decisions.
- To describe the value and function of existing open space properties.

Each property may express one or more attributes. While not all sites will reflect every characteristic, even a single attribute can justify inclusion in Golden’s open space system.

**Table 1: Attribute Definitions**

Attribute	Description
<b>CULTURAL</b>	Physical evidence of past human activity (such as heritage, archaeological, agricultural, and mining resources).
<b>ECOLOGICAL</b>	Natural features, including riparian areas, geology, topography, wildlife, biodiversity, native vegetation, and rare plants and animals.
<b>PALEONTOLOGICAL</b>	Fossilized remains, traces, or imprints of organisms preserved in or on the earth’s crust that contribute to the unique history of a landscape.
<b>ACTIVE VISITATION</b>	Natural landscapes that provide designated trails for activities like hiking, biking, and running.
<b>PASSIVE VISITATION</b>	Natural landscapes that support low-impact activities such as wildlife observation, quiet reflection, and appreciation while minimizing disturbance to natural, historical, and cultural resources and habitats.
<b>SCENIC</b>	Natural landscapes and scenic views that contribute to and enhance the visual appeal of a community.

Appendix C lists how these attributes apply to each open space property.

The attribute model developed in this plan provides a flexible framework for evaluating whether a property aligns with Golden’s open space purpose, specifically the conservation or preservation of ecological, cultural, or scenic resources for the benefit of future generations. It supports a structured, values-based strategy for identifying which City-owned properties should be designated as open space and which future land acquisitions should be prioritized. This approach ensures that open space decisions remain aligned with the mission, vision, and definition established in Phase 1.

For example, the South Neighborhood Property, a 6-acre parcel annexed by Golden in 2023 through a land exchange with Jefferson County, illustrates how the attribute model can inform open space decisions. While relatively small, the property demonstrates cultural and scenic value and is adjacent to other City-owned land. Permanently designated for open space, park, or recreational use, it is planned to be combined with adjacent parcels to create a larger 20-acre site. The City will work with residents to shape its future use in a way that honors its legacy and supports long-term stewardship goals.

---

# 03

# MAINTENANCE, PRESERVATION, AND RESTORATION



Golden’s open space system plays a vital role in conservation, recreation, and ecological resilience. Increasing visitation and changing environmental conditions demand a proactive and coordinated approach to ensure long-term stewardship.

This chapter recommends phasing in standardized, citywide maintenance and management plan. It outlines practices that can be applied across all open space properties to support ecological health, public access, and resource protection. As part of Phase 3, a field-based ecological and physical inventory will be conducted, followed by the development of site-specific management plans. These efforts will provide the detailed information and guidance needed to prioritize restoration, and tailor stewardship strategies for each open space property.

## 3.1 Recommended Open Space Management Plan

Golden currently uses various practices to manage its open space properties. To enhance consistency, efficiency, and ecological impact, this plan applies a core set of maintenance, restoration, and conservation tasks uniformly across all open space area. This approach will:

- ✓ Establish consistency in open space care and resource protection
- ✓ Improve transparency for staff and residents
- ✓ Simplify training, budgeting, and operations
- ✓ Support strategic, long-term stewardship
- ✓ Ensure alignment with Golden’s conservation priorities

To implement this framework effectively, the plan organizes tasks into key management categories that address the most critical elements of open space care:

### Management Categories

#### VEGETATION MANAGEMENT

Control of noxious and invasive species, promotion of native plants, rare species protection, and wildfire risk reduction in coordination with the Fire Mitigation Committee.

#### WILDLIFE AND HABITAT MANAGEMENT

Protection of critical habitats, nesting and breeding zones, and riparian corridors, with strategies to minimize human-wildlife conflict.

#### VISITATION AND ACCESS MANAGEMENT


Regular maintenance of trails and access points, closure or restoration of social trails, and collaboration with Jeffco Open Space on shared boundaries.

#### CULTURAL AND ENVIRONMENTAL RESOURCE MANAGEMENT

Safeguarding historical, archaeological, and paleontological features, along with integrated efforts to support riparian health and stormwater management.

Table 2 summarizes the recommended tasks within each management category, reflecting guidance from the Working Group and PRAB. Successful implementation of this citywide plan will require evaluating staffing, funding, and operational capacity. Additional resources may be necessary to support both the initial rollout and ongoing impact of the plan.

Table 2: Management Plan

 <h2 style="margin: 0;">Vegetation Management</h2>	
<b>WEEDS</b>	<p>Monitor and manage noxious and invasive weeds in accordance with the Colorado Department of Agriculture’s Noxious Weed Program.</p>
<ul style="list-style-type: none"> <li>01 Monitor and map weed infestations annually.</li> <li>02 Develop a noxious and invasive weed management plan.</li> <li>03 Implement an integrated management strategy that uses a variety of tools, including herbicides, mowing, and biological controls, and can be implemented and adjusted over time.</li> <li>04 Prioritize areas for weed control treatments based on species present and overall vegetation management objectives.</li> <li>05 Immediately address areas where known List A weed species occur.</li> </ul>	<ul style="list-style-type: none"> <li>06 Focus ongoing weed management activities on infestations of state List B weed species.</li> <li>07 Use native vegetation enhancement efforts to address state List C weed species.</li> <li>08 Prioritize immediate weed management efforts based on the Colorado Noxious Weed Lists—targeting List A species first, followed by Lists B and C—regardless of location. Broader vegetation management, including restoration, should concentrate along trails and in highly disturbed areas.</li> </ul>
<b>DISTURBED NATIVE HABITAT RESTORATION</b>	<p>Manage disturbed native habitat areas with a restoration emphasis on ecological diversity, noxious and invasive weed mitigation, erosion control, and native habitat enhancement.</p>
<ul style="list-style-type: none"> <li>01 Develop a restoration plan for disturbed native habitats as part of Phase 3 of the OSMP site-specific planning. The plan should outline strategies to increase native vegetation cover and diversity, with defined goals, success criteria, monitoring timelines, and adaptive management thresholds.</li> </ul>	<ul style="list-style-type: none"> <li>02 Monitor the effectiveness of native grassland restoration treatments and adjust over time.</li> </ul>
<b>RARE PLANT PRESERVATION</b>	<p>Map and monitor rare plant populations on open space to prioritize their protection.</p>
<ul style="list-style-type: none"> <li>01 Build upon existing rare plant data by conducting species inventories and establishing ongoing monitoring to track and protect rare plant species on open space.</li> <li>02 Coordinate with the CNHP to identify rare plants and preservation techniques.</li> </ul>	<ul style="list-style-type: none"> <li>03 Install signage that highlights native plant species, plant communities, and their ecological roles as part of routine stewardship efforts. This signage will support public education and reinforce the value of native vegetation across Golden’s open space properties.</li> </ul>



# Vegetation Management

## FUELS MITIGATION

Coordinate with the Fire Mitigation Committee and other regional partners to plan, implement, monitor, and manage fuel reduction projects to meet both wildfire protection and ecological enhancement goals.

- 01 Coordinate with the Golden Fire Department to implement wildfire mitigation measures on open space to achieve goals in the Community Wildfire Protection Plan.
- 02 Educate adjacent property owner on defensible space practices (i.e. removal of ladder fuels such as fences, trees and shrubs next to open spaces) adjacent to reduce catastrophic wildfire risks. Maintain vegetation of open space properties—particularly where they border adjacent structures and homes—by mowing, removing overhanging branches, and clearing trash, debris, and cuttings.

## UTILITIES MANAGEMENT

Coordinate with Golden Public Works Department and utility providers to plan, manage, and monitor utility access and infrastructure within open space areas. Efforts should minimize ecological disturbance, maintain site integrity, and ensure timely communication around maintenance needs, easements, and restoration following utility work.

- 01 Plan for Golden’s utility access needs—such as water, sewer, and gas—to minimize disruption to open space when Public Works requires entry.

## FLOOD RISK MANAGEMENT

Coordinate with Public Works, the Golden Stormwater Management Department, and other regional partners to plan, implement, and monitor floodplain management projects to meet both flood risk protection and ecological enhancement goals.

- 01 Coordinate with Public Works and the Golden Stormwater Management Department to implement flood risk protection measures on open space to achieve citywide floodplain management goals.



# Wildlife and Habitat Management

## WILDLIFE HABITAT CONSERVATION

Balance trail, human use, and disturbance with wildlife habitat protection.

- 01 Incorporate signage indicating reasons for on-leash regulations (“to reduce impacts to wildlife,” “for safety of dogs and cyclists on the paved trail,” etc.).
- 02 Allow opportunities for habitat creation by intentionally leaving woody debris, tree snags, or other natural habitat enhancements in key locations that do not pose a threat to human or wildfire safety (e.g., honeybee nests, cavity-nesting birds).
- 03 Assess and monitor open space areas for species listed under the Threatened and Endangered Species Act, such as the Preble’s meadow jumping mouse and Ute ladies’-tresses orchid, to ensure compliance and prevent habitat disturbance.
- 04 Assess fencing needs on open space properties to enhance wildlife movement while minimizing unwanted foot traffic. Where fencing is necessary, prioritize designs that are ecologically sensitive and context-appropriate—such as using vegetation or natural barriers—and consider removing existing fencing that poses a barrier to wildlife, unless it holds historic value. All removals should be reviewed and approved by the Department Director.
- 05 Where fencing is necessary (e.g., property boundaries or management needs), use aesthetically appropriate and wildlife-friendly fencing.
- 06 Coordinate with the local Colorado Parks and Wildlife (CPW) district wildlife manager to assess raptor nests in close proximity to trails and frequent human disturbance areas per CPW’s raptor nest guidelines.
- 07 Map and monitor the status of raptor nests on open space annually.
- 08 Avoid unnecessary maintenance activities in areas with known wildlife populations during sensitive nesting and breeding periods.
- 09 Meet biannually with local CPW district wildlife manager to evaluate big game habitat and population data, discuss management issues and trends, and identify adaptive management needs.
- 10 Coordinate with the Stormwater Management Department to implement corrective action as needed to address minor issues that arise.
- 11 Monitor riparian habitat condition in wetlands and along creeks, drainages, ditches, and gulches.
- 12 Monitor wetland habitats to ensure biodiversity persistence.



# Visitation and Access Management

## TRAILS AND ACCESS

Manage and monitor existing trails and other visitor amenities to provide desired visitor access and minimize adverse impacts.

- 01 Monitor trails for use and resource damage, prioritizing closure and reclamation of problematic trails.
- 02 Map and evaluate existing natural surface trails annually and following major storm events for erosion, rutting, braiding, or other maintenance or management issues.
- 03 Implement routine maintenance of existing natural surface trails, including drainage clearing, vegetation clearing, social trail closure, and light repairs every two to three years per trail section.
- 04 Perform targeted maintenance of existing natural surface trails to address small or localized issues as needed or every four to six years per trail section.
- 05 Map and monitor the condition of existing paved trails to prioritize maintenance needs annually.
- 06 Immediately address natural surface and paved trail maintenance issues that may threaten public safety or result in significant trail degradation or resource damage.

## PUBLIC AND PRIVATE LAND INTERFACE

*Management Recommendation* – Work with partners (e.g., Jeffco Open Space) and neighboring residents to proactively monitor and manage property boundaries and mitigate past and future issues that may result in resource damage.

- 01 Monitor property boundaries annually for encroachment, social trails, illegal camping, and other trespass issues.
- 02 Maintain ongoing communication and coordination with Jeffco Open Space and other neighboring landowners regarding adjacent public uses and any issues that may arise.
- 03 Consider organizing an educational campaign to coordinate efforts with neighboring private property owners on strategies to reduce wildfire risks, manage litter, control weeds, and address other ongoing maintenance needs.



## Other Resource Management

### CULTURAL RESOURCE PRESERVATION

Preserve areas with unique cultural resources by reducing or prohibiting public access or development.

- 01 Where appropriate, provide interpretive signage or other educational materials about cultural resources on open space to educate the public.
- 02 Where appropriate, provide designated public access to cultural resources on open space. Consult with the State Historic Preservation Office (SHPO) as needed to ensure compliance with preservation guidelines and to protect cultural or historical resources.
- 03 Coordinate with the SHPO when new cultural resource findings occur.
- 04 Ensure any area closures for cultural resource protection are also shown on signage, maps, the Golden website, and other platforms such as COTREX.

### PALEONTOLOGICAL RESOURCE PRESERVATION

*Management Recommendation* – Preserve areas with unique paleontological resources by reducing or prohibiting public access and development.

- 01 Where appropriate, provide interpretive signage or other educational materials about paleontological resources on open space to educate the public.
- 02 Where appropriate, provide designated public access to paleontological resources on open space.
- 03 Ensure any area closures for paleontological resource protection are also shown on signage, maps, the Golden website, and other platforms such as COTREX.

---

# 04



# RECOMMENDATIONS



Golden’s open spaces provide vital ecological, cultural, and scenic benefits. This chapter outlines key recommendations informed by community engagement, working group input, and staff collaboration to strengthen long-term stewardship. It includes updates to the mission, vision, and definition of open space; adoption of an attribute-based acquisition framework; two category classification model; and a set of strategic actions to guide consistent management, trail planning, and future investment. These recommendations should be implemented as leadership assesses staffing needs, available funds, citywide priorities, and building capacity for stewardship.

## 4.1 Recommended Update to the Mission Statement

Community engagement feedback highlighted the desire for a more refined mission statement. The recommended update refines the language to reduce redundancy and better distinguish between conservation (sustainable use) and preservation (protection). Additionally, it explicitly incorporates wildlife habitat protection, aligning with resident conservation priorities.

### ORIGINAL MISSION STATEMENT

“To conserve, preserve, and steward Golden’s open spaces to support the health of these spaces and enrich the quality of life for Golden’s residents and visitors, through meaningful connection to nature and natural areas, today and in the future.”

### RECOMMENDED MISSION STATEMENT

“To conserve, preserve, and steward Golden’s open spaces, ensuring the health of these areas and enriching the quality of life for residents and visitors by protecting native plants, wildlife habitats and ecosystems, while fostering meaningful connections to nature and natural landscapes, both now and for future generations.”

## 4.2 Recommended Update to the Vision Statement

The existing vision statement includes ambiguous language that could be made more direct. The recommended update replaces the phrase “legacy of wonder” with a clearer focus on the long-term impact of the open space system. It also explicitly incorporates values of connection, education, and stewardship, ensuring alignment with the mission.

### ORIGINAL VISION STATEMENT:

“To provide high quality, diversified open space system that supports the natural world, history, and people to foster an enduring legacy of wonder.”

### RECOMMENDED VISION STATEMENT

“To provide a high-quality, diverse open space system that protects the natural environment, and preserves cultural and historical resources, creating a lasting impact on both current and future generations through connection, education, and stewardship.”

## 4.3 Recommended Update to the Definition of Open Space

Feedback from engagement efforts emphasized the importance of explicitly recognizing wildlife habitat protection as a core function of open space. The recommended update reflects this priority while maintaining the original intent of conservation and preservation.

### ORIGINAL DEFINITION OF OPEN SPACE

“Those lands owned or acquired by the City of Golden, whose purpose is primarily conservation or preservation, and that are managed to maintain, improve, or adapt the ecological and/or historical integrity of the parcel for enjoyment by future generations.”

### RECOMMENDED DEFINITION OF OPEN SPACE

“Those lands owned or acquired by the City of Golden, whose purpose is primarily conservation or preservation, and that are managed to maintain, improve, or adapt the ecological and/or historical integrity of the parcel, including the protection of native plants, wildlife habitats and ecosystems, for enjoyment by future generations.”

## 4.4 Recommended Land Evaluation and Acquisition Policy

A formalized land evaluation and acquisition policy will guide decisions about both existing City-owned properties and future land purchases, ensuring alignment with Golden’s conservation priorities, ecological goals, and community values. These criteria were developed in alignment with the open space attributes identified during this planning process, which reflect the key values and characteristics the community associates with open space.

Not every property will exhibit all attributes. Instead, this framework supports flexibility by recognizing that each open space site contributes to the overall system—whether through ecological protection, cultural preservation, recreation, or scenic value. Based on the findings from this effort, the following criteria are recommended for evaluating and prioritizing acquisitions:

### Cultural

- Contains historic or archaeological sites, including without limitation Indigenous cultural resources, early settlement areas, or features related to Golden’s mining or agricultural past.
- Enhances public awareness of Golden’s heritage through opportunities for interpretation or preservation.

### Ecological

- Supports native flora, wildlife habitat, riparian areas, biodiversity hotspots, and enhances wildlife connectivity.
- Includes land suitable for restoration, such as areas with invasive species or degraded habitat.
- Contributes to watershed health or supports climate resilience (e.g., flood mitigation, shade corridors).

### Paleontological

- Includes documented fossil beds, geologic formations, or locations with paleontological discoveries.
- Enhances the scientific or educational understanding of Golden’s prehistoric landscape.

### Visitation

- As appropriate, supports public access and provides opportunities for people to connect with nature in ways that are consistent with conservation goals.
- Respects the capacity and character of each site, avoiding overuse or user conflicts.
- Enhances connectivity to other open spaces while supporting habitat continuity, trail access, watershed protection, riparian health, and other key conservation values.

### Scenic

- Protects viewsheds, ridgelines, and visually prominent landscapes important to Golden’s identity.
- Preserves the natural visual character of gateway areas, corridors, or urban edges.

### Feasibility and Management

- Aligns with available funding sources, partnerships, or grant opportunities.
- Can be sustainably managed and maintained within Golden’s resources and staffing capacity.
- Complies with legal, regulatory, and zoning requirements, including water and mineral rights.

## 4.5 Recommended Development Policies for Open Space

Working group feedback emphasized a strong commitment to protecting the ecological integrity of Golden’s open space system, especially in areas where trails intersect with or may impact sensitive habitats, key natural features, or other important site attributes. To support this priority, two complementary policies are recommended: one addressing social trail management, and the other guiding future trail-related and broader development activities on open space lands. Together, these policies reinforce Golden’s land stewardship goals while balancing access and long-term sustainability.

### Social Trails Management Policy

The unauthorized creation of social trails is prohibited and considered damaging to protected open space. Restoration and deterrent measures will be implemented as needed.

Golden will assess social trails based on their ecological impact, necessity, and long-term suitability. Trails that degrade habitat, disturb key attributes or land features, cause erosion, or lead to user conflicts will be prioritized for closure, realignment, or removal. However, some social trails may be considered for formal designation if they serve a clear public benefit,

align with conservation goals, and meet the criteria outlined in the Open Space Development and Trail Policy on Open Space Properties Policy.

### Open Space Development Policy

Golden’s open space properties are designated primarily for conservation. Trails or other development in these areas must align with that purpose and be carefully planned, evaluated, and managed to avoid ecological degradation and other negative impacts.

Trail decisions on open space lands will follow these principles:

- ✓ **Conservation First:** Trails must avoid sensitive habitats, rare plant communities, water resources, geologic features, and cultural sites.
- ✓ **Site Considerations:** Trail additions, reroutes, or closures must consider terrain, slope, watershed health, scenic quality, long-term management feasibility.
- ✓ **Independent Review:** Trail modifications or additions expected to increase human activity—especially in previously undisturbed areas—must

undergo an outside independent environmental review of impact on vegetation, wildlife, local geology, important attributes, and watershed.

- ✓ **Clear Purpose and Plan Alignment:** Any proposed trail proposals must demonstrate a clear purpose and align with existing citywide and neighborhood plans. Proposals should support broader goals such as conservation and sustainable land use.
- ✓ **Interdepartmental Review:** Relevant Golden departments and boards, including PRAB, must review trail proposals to support sustainable access and public safety.

- ✓ **Ongoing Assessment:** Trails will be reviewed periodically to address impacts from user activity, development, ecological change, or severe weather.
- ✓ **Community Engagement:** Trail proposals will include early outreach to surrounding neighborhoods through mailed notices, public meetings, and an online comment period to ensure residents are informed and have the opportunity to provide input prior to review by City boards, departments, or Council.
- ✓ **Regional Coordination:** Trails intersecting with Jeffco Open Space lands and other regional land managers will be planned in collaboration to ensure consistency and shared stewardship.

## 4.6 Strategic Action Plan

The following actions outline key steps to implement Phase 2 of the OSMP and lay the foundation for Phase 3.



### 01

#### FORMALIZE UPDATES TO OPEN SPACE MISSION, VISION, DEFINITION, AND PROPERTY NAMES

- A. Standardize Property Naming and Zoning Designation:** Update open space property names to match those listed in this document to improve consistency in planning and communication. Determine if zoning or land use designation changes are needed to align with the intended use and protection of each property.
- B. Reaffirm the City’s Open Space Values:** Adopt the updated mission, vision, and open space definition to reinforce the City’s commitment to conservation, preservation, stewardship, and the protection of wildlife and natural attributes.



### 02

#### STRENGTHEN CONSERVATION POLICIES AND PROTECTIONS

- A. Designate Key Potential Conservation Area:** Formally recognize and protect Kinney Run, North Table Mountain, Grant Terry, Parfet Open Space, Schweich Hill, and South Table Mountain as conservation priority areas, with the option to include additional properties as needed based on future evaluation.
- B. Implement Habitat Protection Measures:** Restrict high-impact activities in sensitive areas and introduce seasonal closures, where necessary, for wildlife conservation.
- C. Enhance Restoration Efforts:** Develop targeted restoration plans for degraded habitats, focusing on invasive species removal, erosion control, and native vegetation restoration.
- D. Evaluate the Recommended Development Policies for Open Space:** To guide trail evaluation, designation, and stewardship on Golden’s open space. These policies ensure decisions are aligned with conservation priorities, supported by environmental review, and informed by interdepartmental and community input.



## 03

## IMPROVE PUBLIC EDUCATION ON CONSERVATION

- A. Install Property Name and Wayfinding Signage:** Ensure each open space property is marked with clear signage that includes the official property name, access points, and designated trail information. Consistent signage will help residents and visitors recognize individual open space sites, navigate them responsibly, and distinguish between formal trails and social paths—supporting both user experience and conservation goals.
- B. Expand Signage and Interpretation:** Install educational signage at key open space locations to highlight ecological significance, native plant and wildlife habitats, ongoing conservation efforts, and other site-specific information that supports public understanding and stewardship.
- C. Launch Public Stewardship Programs:** Engage the community in trail maintenance, invasive species removal, and habitat restoration initiatives.
- D. Use Digital Tools for Education:** Develop an interactive open space map and online resources to educate residents about Golden’s open space system and conservation areas.
- E. Coordinate Regional Signage and Messaging:** Work with partner agencies such as Jeffco Open Space and regional collaboratives like NOCO Places and the Colorado Conservation Trails Collaborative to ensure consistent conservation signage and educational messaging. Aligning communication across jurisdictions will enhance public understanding, support stewardship, and create a seamless visitor experience.



## 04

## INCREASE COLLABORATION AND COORDINATION

- A. Work With Adjacent Land Managers:** Evaluate long-term maintenance responsibilities from a fiscal and consistency perspective, and strengthen partnerships with Jeffco Open Space, conservation organizations, and neighboring municipalities to support shared management strategies.
- B. Expand Tribal and Historical Collaboration:** Engage Native American groups and historical organizations to support cultural preservation efforts.
- C. Integrate Wildfire Mitigation Strategies:** Coordinate with the Golden Fire Department and Sustainability Division to implement wildfire risk reduction measures in open spaces.
- D. Rename PRAB to the Parks, Recreation, Open Space, and Advisory Board (PROSAB):**
  - ▶ Rename the PRAB to PROSAB to better reflect Golden’s commitment to open space stewardship and management.
  - ▶ Create a dedicated Open Space Subcommittee under PRAB to provide focused oversight and guidance on implementing Phase 2 of the OSMP recommendations and developing Phase 3 strategies.

- ▶ Enhance Collaboration with Stewards of Golden Open Space, Working Group Members, Schools, and the Community
  - ▶ Partner with the open space community and local schools to enhance public education efforts, stewardship programs, and advocacy initiatives that align with the community’s conservation goals.
  - ▶ Leverage the expertise of partners, including educators, to support research, habitat monitoring, and restoration initiatives across Golden’s open space system.
- E. Formalize Partnership with Friends of Dinosaur Ridge:** Pursue a Memorandum of Understanding (MOU) to support collaborative management, preservation, and educational programming at Triceratops Trail.



05

## IMPLEMENT PRELIMINARY OPEN SPACE ATTRIBUTES

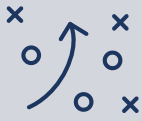
- A. Implement Preliminary Open Space Attributes:** Apply the six key preliminary attributes—Cultural, Ecological, Paleontological, Active Visitation, Passive Visitation, and Scenic—to guide land use decisions.
- B. Evaluate Open Space Land Evaluation and Acquisition Policy:** Evaluate the proposed policy for evaluating existing and potential open space properties using the attribute framework to prioritize ecological, cultural, paleontological, scenic, and visitation value, while also considering connectivity and long-term management feasibility.
- C. Incorporate Attributes Into Education Efforts:** Utilize attributes to help residents understand the purpose and significance of different open space areas.



06

## IMPLEMENT A PRELIMINARY CLASSIFICATION MODEL

- A. Implement a Preliminary Classification Model:** Apply the preliminary classification system to manage open spaces based on ecological sensitivity, land use or other restrictions, public access, and conservation needs.
- B. Establish Two Preliminary Open Space Classifications:**
- ▶ **Resource Protection Areas:** Highly sensitive habitats with limited or no public access.
  - ▶ **Natural Areas:** Balanced conservation with designated low-impact access.
- C. Incorporate Supplemental Designations:** Incorporate supplemental designations, such as wildfire mitigation zones, study areas, and restricted access sites, to address evolving environmental and safety concerns.



## 07

## PHASE IN THE OPEN SPACE MANAGEMENT PLAN

- A. Begin Implementing the Open Space Management Plan:** Use the Open Space Management Plan (Chapter 3) as a foundation to guide the gradual development of consistent maintenance and stewardship practices across all open space properties. The plan provides direction on vegetation management, wildlife protection, visitation, and resource conservation to support a unified approach aligned with open space goals.
- B. Assess Staffing Needs:** Take steps to evaluate current staffing levels in relation to the Open Space Management Framework, identifying where additional support may be needed to meet ecological and community priorities.
- C. Build Capacity for Stewardship:** Explore the potential for adding a natural resources specialist or similar role to support long-term stewardship and ensure the effective care of open space resources over time.



## 08

## SECURE SUSTAINABLE FUNDING FOR LONG-TERM STEWARDSHIP

- A. Secure Long-Term Open Space Funding:** Conduct an annual review of Open Space funding in the City's general operating budget and actively pursue dedicated funding sources, grants, and partnerships to support ongoing acquisition, management, restoration, maintenance, and capital improvements. Consider long-term funding tools such as dedicated tax revenues, impact fees, public-private partnerships, or stewardship endowments.
- B. Leverage Community Partnerships:** Work with local businesses, nonprofits, and volunteers to support conservation and maintenance efforts.
- C. Apply for State and Federal Grants:** Pursue CNHP funding, state conservation grants, and federal land protection grant programs to support land acquisition, habitat restoration, and public education on open space stewardship.
- D. Address Capital Needs:** Address capital needs summarized in Appendix D from Phase 2, with additional property-specific needs to be identified through the Phase 3 field-based inventory.



## 09

## TRANSITION TO OSMP PHASE 3

As Golden continues to refine its open space management approach, the next critical step is to develop field-based physical and ecological inventories along with tailored maintenance plans for each open space property, supported by community engagement through at least two public meetings or open houses, a resident working group, and review by Phase 1 stakeholders.

- A. Allocate Phase 3 Funding:** Earmark funding in the City's general operating budget to support Phase 3 of OSMP planning.
  - ▶ Identify gaps in staffing or expertise needed to effectively manage long-term ecological health, trail upkeep, and restoration efforts.
- B. Conduct a Field-Based Physical and Ecological Inventory:** Complete a comprehensive field-based physical and ecological inventory of each Open Space parcel to include a thorough assessment of a site's natural and cultural resources, including plant and animal species, habitat types, ecological functions, geologic features, and historically or culturally significant sites. This inventory will help guide conservation efforts, identify sensitive habitats and culturally significant sites, and prioritize restoration, preservation, and long-term management needs.
  - ▶ Consider seasonal or specialized staffing to address high-priority conservation initiatives.
- C. Assess Maintenance Needs:** Conduct property-specific evaluations to determine habitat restoration priorities, infrastructure needs, and resource allocation.
- D. Customize Conservation Strategies:** Develop individual maintenance, conservation and restoration plans tailored for each open space parcel, addressing issues such as invasive species management, erosion control, and habitat enhancement efforts for each property based on site conditions.
- E. Establish Long-Term Maintenance Schedules:** Create routine monitoring and upkeep plans to ensure each open space remains ecologically healthy and well managed.
- F. Evaluate Staffing Levels Based on Site-Specific Maintenance and Restoration Goals:**
  - ▶ Assess staffing capacity to ensure adequate resources are available to meet property-specific maintenance and restoration objectives.
- G. Strengthen Wayfinding and Visitor Education on Designated Trails:** Review designated trails and related signage to improve wayfinding, support responsible use, and educate visitors on staying within appropriate trail corridors to protect sensitive resources.
- H. Identify and Assess Social Trails:**
  - ▶ Conduct a survey of social trails to evaluate their impact on ecological integrity, habitat disruption, and visitor safety.
  - ▶ Establish criteria for determining which social trails should be:
    - Closed due to ecological sensitivity or erosion concerns.
    - Officially designated and improved where they contribute appropriately to connectivity and sustainable recreation goals.
    - Monitored for future impacts to determine if adjustments are necessary.
- I. Evaluate OSMP Phase 2 Preliminary Recommendations:** Review and confirm, modify, or reject open space system classifications, preliminary attributes, classification, and public access, by property, based on field-based physical and ecological inventory findings and conservation priorities.



# APPENDIX A

## Community Survey

## 2024 City of Golden Parks, Recreation, and Open Space Survey

The City of Golden would like your input to help determine parks, recreation, and open space priorities for the community. This survey will take 15-20 minutes to complete. When you are finished, please return your survey in the enclosed postage-paid, return-reply envelope. If you prefer, you can complete the survey online at [GoldenSurvey.org](https://www.cityofgolden.org/goldensurvey). We greatly appreciate and value your time! **At the end of this survey, you will have an opportunity to opt-in to receive a chance to win one (1) \$500 prepaid Visa gift card for fully completing your survey.**

### 1. Including yourself, how many people in your household are...

Under age 5: \_\_\_\_      Ages 15-19: \_\_\_\_      Ages 35-44: \_\_\_\_      Ages 65-79: \_\_\_\_  
 Ages 5-9: \_\_\_\_      Ages 20-24: \_\_\_\_      Ages 45-54: \_\_\_\_      Ages 80+: \_\_\_\_  
 Ages 10-14: \_\_\_\_      Ages 25-34: \_\_\_\_      Ages 55-64: \_\_\_\_

### General Use

### 2. In the last year, have you or members of your household visited any parks or recreation facilities operated by the City of Golden?

\_\_\_\_(1) Yes [Answer Q2a.]      \_\_\_\_ (2) No [Skip to Q3.]

#### 2a. How would you rate the overall quality of the parks or recreation facilities you or members of your household have visited?

\_\_\_\_(4) Excellent      \_\_\_\_ (3) Good      \_\_\_\_ (2) Fair      \_\_\_\_ (1) Poor

### 3. In the last year, have you or members of your household participated in any recreation programs (by registering through the City) offered by the City of Golden?

\_\_\_\_(1) Yes [Answer Q3a.]      \_\_\_\_ (2) No [Skip to Q4.]

#### 3a. How would you rate the overall quality of the recreation programs you or members of your household have participated in?

\_\_\_\_(4) Excellent      \_\_\_\_ (3) Good      \_\_\_\_ (2) Fair      \_\_\_\_ (1) Poor

### 4. From the following list, please CHECK ALL the organizations you or members of your household have used for recreation programs or activities during the last 12 months. [Check ALL that apply.]

\_\_\_\_(01) City of Golden Parks and Recreation      \_\_\_\_ (07) Private dance or gymnastic facilities  
 \_\_\_\_ (02) Colorado School of Mines      \_\_\_\_ (08) Private fitness clubs  
 \_\_\_\_ (03) Other nearby cities      \_\_\_\_ (09) YMCA  
 \_\_\_\_ (04) Other nearby recreation districts      \_\_\_\_ (10) Youth/private sports organizations  
 \_\_\_\_ (05) Private athletic training facilities      \_\_\_\_ (11) Other: \_\_\_\_\_  
 \_\_\_\_ (06) Private community centers

### Open Space

### 5. Please select the ONE item below that best describes your preferred use of open spaces. [Check only ONE.]

\_\_\_\_(1) As a place to hike, bike, or run      \_\_\_\_ (5) As an educational space  
 \_\_\_\_ (2) As a place for wildlife viewing      \_\_\_\_ (6) Other: \_\_\_\_\_  
 \_\_\_\_ (3) As a place for solitude and quiet reflection      \_\_\_\_ (7) None, I do not use open spaces  
 \_\_\_\_ (4) As a place for children to play

6. Please **CHECK ALL** the aspects of Golden's open spaces that you value **MOST**. *[Check ALL that apply.]*

- |  |   |
|--|---|
| <input type="checkbox"/> (01) The opportunity to experience nature | <input type="checkbox"/> (07) Native ecosystems         |
| <input type="checkbox"/> (02) Intrinsic value of open space        | <input type="checkbox"/> (08) Habitat for wildlife      |
| <input type="checkbox"/> (03) Views and vistas                     | <input type="checkbox"/> (09) Community and well-being  |
| <input type="checkbox"/> (04) Outdoor recreational activities      | <input type="checkbox"/> (10) Educational opportunities |
| <input type="checkbox"/> (05) Migration corridors for wildlife     | <input type="checkbox"/> (11) Historical sites          |
| <input type="checkbox"/> (06) Biking, walking, and running         |   |

7. Which **THREE** items listed in Question 6 above do you **VALUE MOST**? *[Write in your answers below using the numbers from the list in Question 6.]*

1st: \_\_\_\_ 2nd: \_\_\_\_ 3rd: \_\_\_\_

8. From the list below, **WHICH THREE** of the open space types should be prioritized in Golden's Open Space Master Plan? *[Write in your answers in the spaces below using the numbers from the list below.]*

1. Conservation of natural habitats and wildlife
2. Protection from urban development and expansion of open space areas
3. Enhancement of recreational opportunities
4. Preservation and protection of Clear Creek, surrounding waterways, and water quality
5. Restoration of damaged or degraded ecosystems
6. Fire and drought resilience, with adaptability to climate change
7. Spaces for educational enrichment, land stewardship, and agricultural heritage preservation
8. Protection of unique archaeological, paleontological, and historic sites

1st: \_\_\_\_ 2nd: \_\_\_\_ 3rd: \_\_\_\_

9. The City of Golden is committed to enhancing the City's open spaces. From the list below, **WHICH THREE** actions do you believe would most positively impact the community? *[Write in your answers in the spaces below using the numbers from the list below.]*

01. Acquire additional open spaces for public use
02. Implement wildfire mitigation measures
03. Manage and control noxious weeds
04. Protect and enhance wildlife habitats
05. Preserve key viewsheds and scenic areas
06. Increase access to natural areas for residents
07. Improve connectivity between trails and public lands
08. Provide more off-leash dog areas
09. Restore and rehabilitate ecological areas
10. Develop additional trails for recreation

1st: \_\_\_\_ 2nd: \_\_\_\_ 3rd: \_\_\_\_

**Programs**

**10. Please indicate how well your needs are being met, in general, whether provided by City of Golden or otherwise, for each of the programs/activities listed below on a scale of 4 to 1, where 4 means your needs are "Fully Met," and 1 means your needs are "Not Met" at all. If you do not have a need for an item listed, please circle "9" for "No Need."**

Type of Program/Activity	Fully Met	Mostly Met	Partly Met	Not Met	No Need
01. Adult fitness and wellness programs	4	3	2	1	9
02. Adult sports leagues	4	3	2	1	9
03. Adult dance classes	4	3	2	1	9
04. After-school programs for school-age youth	4	3	2	1	9
05. Cultural enrichment programs	4	3	2	1	9
06. Indoor cycling programs	4	3	2	1	9
07. Disc golf programs	4	3	2	1	9
08. EGaming/ESports	4	3	2	1	9
09. Family programming	4	3	2	1	9
10. Gymnastics/tumbling programs	4	3	2	1	9
11. Martial arts programs	4	3	2	1	9
12. Mental health education	4	3	2	1	9
13. Mountain biking programs	4	3	2	1	9
14. Outdoor environmental/nature camps and programs	4	3	2	1	9
15. Tennis/pickleball lessons and leagues	4	3	2	1	9
16. Pottery classes for all ages	4	3	2	1	9
17. Preschool programs/early childhood education	4	3	2	1	9
18. Youth high school programs	4	3	2	1	9
19. Programs for individuals with special needs	4	3	2	1	9
20. Youth middle school programs	4	3	2	1	9
21. Recreational swim	4	3	2	1	9
22. Senior fitness classes	4	3	2	1	9
23. Senior social programs	4	3	2	1	9
24. STEAM (science, technology, engineering, arts and mathematics)/tech classes	4	3	2	1	9
25. Swim lessons	4	3	2	1	9
26. Trail running programs	4	3	2	1	9
27. Water fitness programs	4	3	2	1	9
28. Youth dance programs	4	3	2	1	9
29. Youth fitness and wellness classes	4	3	2	1	9
30. Youth performing arts programs (music/theater)	4	3	2	1	9
31. Youth sports programs	4	3	2	1	9
32. Youth summer camps	4	3	2	1	9
33. Youth visual arts (crafts/ceramics/painting)	4	3	2	1	9

**11. Which FOUR programs/activities from the list in Question 10 are MOST IMPORTANT to your household? [Write in your answers below using the numbers from the list in Question 10, or circle "NONE."]**

1st: \_\_\_\_ 2nd: \_\_\_\_ 3rd: \_\_\_\_ 4th: \_\_\_\_ NONE

**Facilities and Amenities**

12. Please indicate how well your needs are being met, in general, whether provided by City of Golden or otherwise, for each of the facilities/amenities listed below on a scale of 4 to 1, where 4 means your needs are "Fully Met," and 1 means your needs are "Not Met" at all. If you do not have a need for an item listed, please circle "9" for "No Need."

Type of Facility/Amenity	Fully Met	Mostly Met	Partly Met	Not Met	No Need
01. Archery facility	4	3	2	1	9
02. Bike park (BMX park/pump track)	4	3	2	1	9
03. Bocce ball court	4	3	2	1	9
04. Community Center (multi-use space for all ages, programs, exercise, and activities)	4	3	2	1	9
05. Diamond sports fields (e.g., baseball, softball)	4	3	2	1	9
06. Disc golf	4	3	2	1	9
07. Accessible playground equipment	4	3	2	1	9
08. Indoor basketball/volleyball courts (indoor gyms)	4	3	2	1	9
09. Indoor facility rental space	4	3	2	1	9
10. Indoor walking/jogging track	4	3	2	1	9
11. Large community parks	4	3	2	1	9
12. Multi-use paved trails (hiking, biking, walking)	4	3	2	1	9
13. Multi-use soft surface trails (hiking, biking, walking)	4	3	2	1	9
14. Natural play areas	4	3	2	1	9
15. Neighborhood parks	4	3	2	1	9
16. Off-leash dog park	4	3	2	1	9
17. Outdoor amphitheater/outdoor performing arts venue	4	3	2	1	9
18. Outdoor basketball courts	4	3	2	1	9
19. Outdoor exercise/fitness equipment	4	3	2	1	9
20. Outdoor multi-use courts (pickleball, tennis)	4	3	2	1	9
21. Outdoor sports complex	4	3	2	1	9
22. Picnic shelters and areas	4	3	2	1	9
23. Playground equipment for all ages	4	3	2	1	9
24. Rectangular sports fields (e.g., football, lacrosse, rugby, soccer)	4	3	2	1	9
25. Shade structures over playgrounds	4	3	2	1	9
26. Skate parks	4	3	2	1	9
27. Splash pads	4	3	2	1	9
28. Teen indoor space	4	3	2	1	9
29. White water kayak course	4	3	2	1	9
30. Other: _____	4	3	2	1	9

13. Which FOUR facilities/amenities from the list in Question 12 are MOST IMPORTANT to your household? [Write in your answers below using the numbers from the list in Question 12, or circle "NONE."]

1st: \_\_\_\_ 2nd: \_\_\_\_ 3rd: \_\_\_\_ 4th: \_\_\_\_ NONE

**Maintenance**

14. Using a scale of 1 to 5, where 5 means "Very Satisfied" and 1 means "Very Dissatisfied," please rate your satisfaction with the maintenance and upkeep provided by the City of Golden based on your experience in the past two years.

How satisfied are you with...	Very Satisfied	Somewhat Satisfied	Neutral	Somewhat Dissatisfied	Very Dissatisfied	Don't Know
1. Maintenance of trails	5	4	3	2	1	9
2. Maintenance and upkeep of dog parks	5	4	3	2	1	9
3. Maintenance at the Golden Community Center	5	4	3	2	1	9
4. Maintenance at Grampas Gym	5	4	3	2	1	9
5. Maintenance and upkeep of parks	5	4	3	2	1	9
6. Maintenance and upkeep of pavilions and picnic areas	5	4	3	2	1	9
7. Maintenance and upkeep of playgrounds	5	4	3	2	1	9
8. Maintenance and upkeep of park restrooms	5	4	3	2	1	9

15. Which THREE of the items listed in Question 14 do you think should be the top priorities for improvement over the next TWO years? [Write in your answers below using the numbers from the list in Question 14, or circle "NONE."]

1st: \_\_\_\_ 2nd: \_\_\_\_ 3rd: \_\_\_\_ NONE

16. Please rate your level of agreement with the following statement: "The City of Golden should reduce the use of pesticides in the City knowing this will increase the level of weed bloom."

\_\_\_\_(5) Strongly agree      \_\_\_\_ (3) Neutral      \_\_\_\_ (1) Strongly disagree  
 \_\_\_\_ (4) Agree              \_\_\_\_ (2) Disagree      \_\_\_\_ (9) Don't know

**Communication**

17. Please CHECK ALL the ways you learn about City of Golden parks, recreation facilities, programs, and events. [Check ALL that apply.]

- \_\_\_\_ (01) City of Golden website (cityofgolden.gov)
- \_\_\_\_ (02) City of Golden Recreate Brochure
- \_\_\_\_ (03) Conversations with staff
- \_\_\_\_ (04) Flyers at facilities
- \_\_\_\_ (05) From friends and neighbors
- \_\_\_\_ (06) Social media (Facebook, X (Twitter), Instagram)
- \_\_\_\_ (07) Recreation Digital Newsletter (email distribution)
- \_\_\_\_ (08) Informer
- \_\_\_\_ (09) City of Golden Weekly Digest digital newsletter (email)
- \_\_\_\_ (10) Other: \_\_\_\_\_

18. Which THREE sources of information listed above do you PREFER MOST? [Write in your answers below using the numbers from the list in Question 17.]

1st: \_\_\_\_ 2nd: \_\_\_\_ 3rd: \_\_\_\_

**Value and Satisfaction**

19. Please rate your satisfaction using a scale of 1 to 5, where 5 means "Very Satisfied" and 1 means "Very Dissatisfied," with the overall value your household receives from City of Golden Parks and Recreation.

\_\_\_\_ (5) Very satisfied      \_\_\_\_ (3) Neutral      \_\_\_\_ (1) Very dissatisfied  
 \_\_\_\_ (4) Satisfied              \_\_\_\_ (2) Dissatisfied      \_\_\_\_ (9) Don't know

20. How important is it for the City of Golden to provide high quality recreation facilities and programs to you and the members of your household?

\_\_\_\_ (5) Very important      \_\_\_\_ (3) Neutral      \_\_\_\_ (1) Not at all important  
 \_\_\_\_ (4) Somewhat important      \_\_\_\_ (2) Not important      \_\_\_\_ (9) Don't know

20a. Please provide a reason for your answer to Question 20 on the previous page.

\_\_\_\_\_  
\_\_\_\_\_

21. From the list below, please select THREE priorities based on your perspective of community value and your individual or family engagement:

1. Capital project reinvestment in existing recreational facilities (e.g., GCC, Splash, Grampsas Gym)
2. Capital project reinvestment in existing parks
3. Land acquisition for park development and/or open space property
4. Expansion of recreational programs and services (e.g., Learn to Swim, operational hours, arts, childcare, teens, older adults)
5. Clear Creek Corridor improvements and management

1st: \_\_\_\_ 2nd: \_\_\_\_ 3rd: \_\_\_\_

**Demographics**

22. What is your age? \_\_\_\_ years

23. Your gender: \_\_\_\_ (1) Male \_\_\_\_ (2) Female \_\_\_\_ (3) Non-binary \_\_\_\_ (4) Prefer not to say

24. Which of the following best describes your race/ethnicity? [Check all that apply.]

- |  |   |
|--|---|
| ____ (01) Asian or Asian Indian            | ____ (05) Native Hawaiian or other Pacific Islander |
| ____ (02) Black or African American        | ____ (06) Hispanic, Spanish, or Latino/a/x          |
| ____ (03) American Indian or Alaska Native | ____ (07) Middle Eastern or North African           |
| ____ (04) White or Caucasian               | ____ (99) Other: _____                              |

25. How many years have you lived in the City of Golden? \_\_\_\_ years

26. What is the primary language spoken in your home? \_\_\_\_\_

26a. Does anyone in your household require translation services? \_\_\_\_ (1) Yes [Answer Q26b.] \_\_\_\_ (2) No

26b. If "YES," which language(s) are most needed? \_\_\_\_\_

27. Would you like to be entered for a chance to win one (1) prepaid \$500 Visa Gift Card for fully completing your survey?

\_\_\_\_ (1) Yes [Answer Q27a.] \_\_\_\_ (2) No

27a. Please provide your contact information.

Mobile Phone Number: \_\_\_\_\_

Email Address: \_\_\_\_\_

**This concludes the survey. Thank you for your time!**

Please return your completed survey in the enclosed postage-paid envelope addressed to:  
ETC Institute, 725 W. Frontier Circle, Olathe, KS 66061

Your responses will remain completely confidential.  
The information to the right will ONLY be used to help identify the level of need in your area. Thank you!



# APPENDIX B

## Community Engagement

In Phase 2 of the OSMP, a working group of SMEs played a key role in shaping the plan’s direction and contributed expertise to guide conservation-focused strategies. Their insights were complemented by additional community engagement efforts, including a statistically valid needs assessment survey, a public open house, an interactive project website, and stakeholder interviews with individuals familiar with Golden’s open space lands. Each engagement served as a critical information-gathering opportunity, and findings should be considered collectively to provide a more thorough understanding of community priorities. This inclusive process helped ensure that decisions align with local values and support the long-term sustainability of Golden’s open spaces by promoting responsible stewardship, protecting natural resources, and maintaining these lands for future generations.

---

## Working Group

Golden established a working group of SMEs to guide the development of Phase 2 of the OSMP, building on the approach used in Phase 1.

Participation was open to all community members through an application process. Out of 22 applications submitted, nine individuals were selected by the

PRAB after a thorough review and scoring process. The selection rubric prioritized residency, interest in natural area conservation, experience with community groups, commitment to participating in meetings, and unique perspectives on the use and management of open space.

### Working Group Purpose and Responsibilities:

- Providing input on Phase 2 of the OSMP
- Offering insights into natural area preservation
- Sharing perspectives on open space classifications
- Building consensus on mission, vision, and definitions for Golden’s open space areas

### Selection Criteria:

Participants were evaluated using a 1 – 5 scoring system based on the following criteria:

- **INTEREST IN NATURAL AREAS:** Clarity and depth of passion for conservation and enhancement
- **EXPERIENCE:** Relevant experience with community groups or advisory boards
- **COMMITMENT:** Ability and willingness to attend meetings between October and April
- **UNIQUE PERSPECTIVES:** Contributions to group diversity, including expertise, background, or lived experience
- **OPEN SPACE VISION:** Ability to articulate meaningful, relevant, and well-thought-out priorities or concerns for Golden’s open spaces

Between October and April, six working committee meetings were held, which covered a range of topics, including the mission and vision, the definition of open space, key attributes of open space, an evaluation of Golden’s open space system inventory, the consideration of an open space classification system, and the creation of criteria for maintenance, preservation, and conservation goals.

## Stakeholder Interviews

Interviews were conducted with representatives from stakeholder organizations that participated in Phase 1 of the OSMP. Each group was contacted by ERO Resources (ERO)—a subconsultant to BerryDunn—to schedule an interview session. Representatives from each organization met with ERO via video call in December 2024. The following organizations contributed through these interview sessions:

- Golden, Community & Economic Development Director
- Golden, Sustainability Manager
- Colorado Mountain Bike Association, Executive Director
- Colorado School of Mines, Associate Vice President of Infrastructure and Operations
- Friends of Dinosaur Ridge, Executive Director
- Jeffco Open Space, Director
- Native American History Museum Advisory Group, Chair
- PRAB, Chair
- Stewards of Golden Open Space, Six Members

All representatives were asked the same questions for consistency. Questions included:

- 01 What Golden open space areas are you most familiar with? (or are your favorite?)
- 02 How do you interact with Golden open space?
- 03 What do you like about Golden open space?
- 04 What would you like to see change regarding Golden open space?
- 05 What concerns do you have about Golden open space?
- 06 What opportunities would you like to see?
- 07 What types of open space classifications would you like to see on Golden's open space?
- 08 Other suggestions?

### General Themes

- There was mostly a strong understanding of Golden open space (separate from Jeffco Open Space) among stakeholders; however, stakeholders noted the public often does not recognize the difference.
- There is a strong value associated with the accessibility and connectivity provided by Golden's open space, whether that is to neighboring public lands (i.e., Jeffco Open Space) or to the downtown area. Trail connections were noted as an important aspect of residents' quality of life.
- Many stakeholders identified wildfire risk as a concern. There is an understanding of the role open spaces can play in wildfire mitigation—serving as a buffer to neighborhoods—and an understanding that this is a sensitive topic for residents.
- There is a general interest in providing more educational opportunities, especially through signage, social media, and other media platforms. The need for open space classifications in Golden's small system is unclear. However, there is general support for use classifications and restrictive use classifications that explain why an area is closed to public use.
- There is a need for more localized collaboration with neighboring entities to continue monitoring and maintaining shared trails, boundaries, and planning efforts (i.e., wildfire mitigation).
- Stakeholders would like Golden to clearly define open space. The public's perception of open space varies widely, and the existing unclear expectations are difficult to manage.

Some representatives specified ways to improve or build upon the existing open space system, such as:

### **Classifications**

- Create classifications that follow existing models, like the federal land manager’s Recreation Opportunity Spectrum.
- Introduce trail designations like “shared trail” (i.e., allows all uses) and user-specific trails (i.e., mountain bike only, hiker only).
- Create classifications that resemble zoning designations to apply to open spaces.
- Include archaeological and paleontological classifications.
- Incorporate a gradation of different open space area types with different classifications or definitions.

### **Collaboration**

- Promote Golden open space along with the Visit Golden campaign.
- Continue coordinating with the Sustainability Division to include sustainable alternatives and design elements when working on trails, trailheads, amenities, and more.
- Consider wildlife, biodiversity, and habitats as a stakeholder in decision-making.

### **Education**

- Promote education around native plants used in Native American religious ceremonies and medicines.
- Include signage on open spaces with Arapaho and Cheyenne names for features and dedications.
- Include educational signage related to the ongoing tribal engagement in Golden.
- Include signs about native vegetation and wildlife.
- Share information with the public regarding paleontological resources.

### **Programming**

- Create a hiking program in locations with public access to combat litter and promote resident involvement in keeping open spaces clean.
- Include dog bag receptacles in key areas.
- Share information about why staying on trails is important.
- Expand tours and educational opportunities for the public to showcase open space features and invoke interest in protecting these spaces.

### **Maintenance and Management**

- Incorporate some existing social trails while closing others to improve connectivity and maintain a sustainable trail system.
- Hire a natural resource specialist dedicated to managing open space.
- Coordinate with the Sustainability Division to resolve conflicts between the low-water-use plants it recommends for residents and the wildfire-safe plants suggested by other organizations.

## Statistically Valid Survey

To gather resident feedback and perspectives, ETC Institute conducted a single statistically valid needs assessment survey in fall 2024, which informed both Phase 2 of the OSMP and the 2025 Parks and Recreation Master Plan update.

The survey included two components: a statistically valid invitation survey, sent by U.S. mail to a random sample of 2,000 residents, and an open-link survey available to residents who were not part of the targeted sample. Its purpose was to collect objective feedback to guide the future of Golden's parks, recreation, and open space.

A total of 433 responses were received from the invitation survey, yielding a margin of error of +/- 4.66% at a 95% confidence level. To maintain the statistical integrity of the invitation sample, the results of the two surveys were analyzed separately. Key findings from the invitation survey related to open space include the following:

Of respondents, 74% identified visitation—such as hiking, biking, and running—as their preferred open space use; the combined nature of this response option limits insight into specific activity preferences.

- This underscores the community's strong connection to outdoor activities, presenting an opportunity to integrate conservation education into trail signage, programming, and stewardship initiatives. By fostering an understanding of responsible recreation, Golden can balance access with the long-term health of its open spaces.

Of respondents, 72% prioritized protecting open spaces from urban development and expanding their overall acreage.

- This underscores the community's desire to preserve open spaces as a way to mitigate urban sprawl.

Concerns about the community survey were raised early in the process and should be taken seriously. Many participants—including community members, Golden staff, and some members of PRAB and the working group—felt the survey lacked key context. Specifically, it did not include a visual map of Golden's open space properties or reference Golden's adopted Open Space Mission, Vision, and Definition. These omissions may have led to confusion and influenced how respondents interpreted questions and prioritized their responses.

This challenge reflects a broader issue: without an adopted open space map or clearly defined open space categories, it is difficult to ensure consistent understanding of what constitutes open space versus parks or other types of public land. Many residents are unfamiliar with Golden's open space definition and may associate the term with parks or recreational amenities. In fact, several open space

properties are adjacent to or interwoven with Golden parks and Jeffco Open Space, further complicating public understanding.

As a result, some survey responses may have been shaped by perceptions of park use and amenities rather than the intended focus on conservation, passive visitation, and stewardship. This confusion reinforces the importance of this planning process—particularly the need to publicly define open space, distinguish it from parks, and develop a system inventory and map to support future communication and policy decisions.

Given these limitations, the survey results should be interpreted with caution and viewed as one of several community input tools. Future efforts should prioritize clearer distinctions between open space and parkland in public materials to ensure more informed engagement.

Almost two thirds of respondents (65%) emphasized the importance of conserving natural habitats and wildlife.

- Conservation is a key priority for residents, reflecting the value placed on maintaining biodiversity and protecting native species.

Of respondents, 59% highlighted preserving waterways, such as Clear Creek, as a key priority.

- Waterways serve as essential ecological and recreational resources, and their protection is critical for maintaining the health of local ecosystems and supporting activities like fishing and kayaking.

When asked which three actions would most positively benefit the community, just over half of respondents (51%) supported acquiring additional open spaces for public use, while 47% prioritized protecting and enhancing wildlife habitats.

- These differing responses suggest that residents may view open space through varied lenses—some focusing on access and recreation, others on conservation. This highlights an opportunity to provide more education about how open space can support both public use and ecological preservation.

Of respondents, 34% noted enhancing recreational opportunities as a secondary priority to protection, conservation, and preservation.

- Although recreation remains important, it ranks significantly lower than conservation-focused priorities, indicating a strong preference for responsible stewardship over expanded recreational development.
- Educational efforts could help bridge the gap between conservation and recreation priorities, fostering a shared understanding of the value of Golden’s open spaces.

The open-link survey received 63 responses and generally reflected similar themes to the statistically valid survey. However, open-link respondents placed slightly greater emphasis on preservation and protection. Results from both the invitation and open-link surveys are presented in Figures 2 and 3.

Figure 2: Preferred Use of Open Space

Q5. Please select the one item below that best describes your preferred use of open spaces.

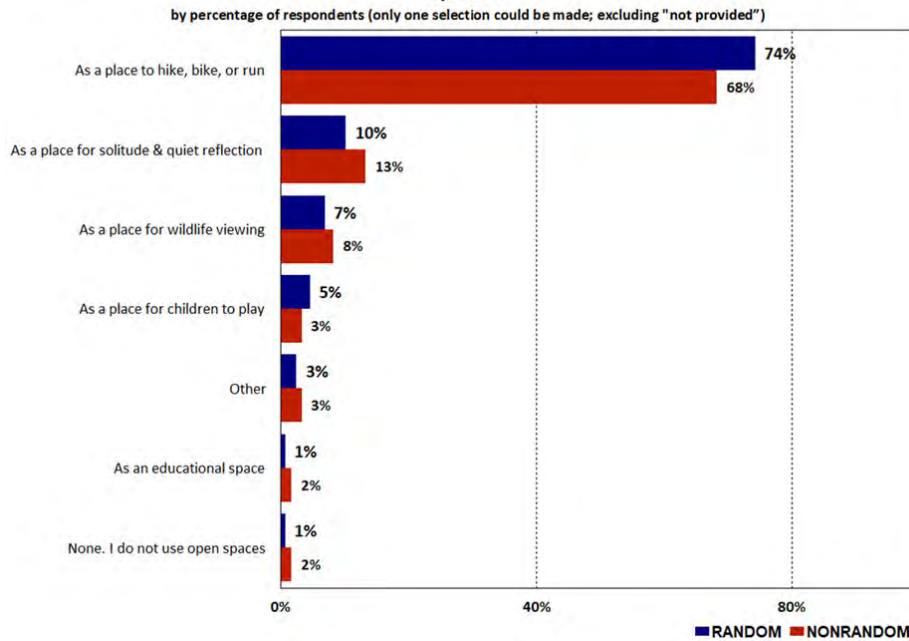
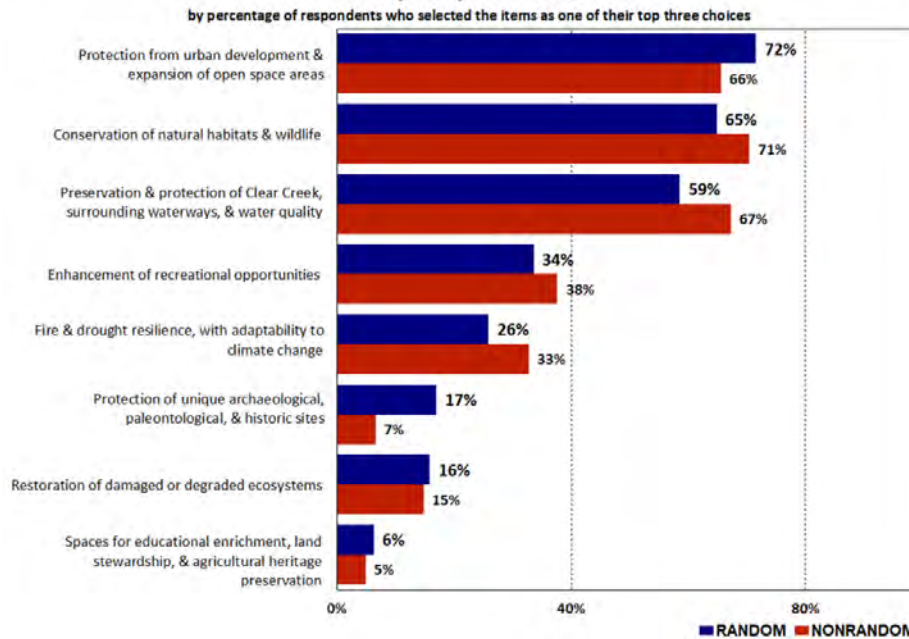


Figure 3: Open Space Priorities

Q8. From the list below, which three of the open space types should be prioritized in Golden's Open Space Master Plan?



## Community Open House

On October 7, 2024, a community open house was held to gather valuable input on open space priorities. The event welcomed 17 attendees who actively participated in interactive engagement activities. Dot voting and sticky note exercises were used to capture general sentiments and ideas, providing a way for participants to express their preferences, identify priorities, and share thoughts on open space needs and opportunities. The number of dots provided to each participant varied by activity, allowing flexibility in how individuals ranked or selected their preferences. These informal tools offered quick, accessible ways to gather meaningful community feedback in a small-group setting.

### Open Space Use

- **MOST COMMON USES:** Hiking, biking, running, and wildlife watching (7 each)
- **LESS COMMON USES:** Solitude and meditation (6), educational space (2), other (1)
- **UNUSED CATEGORIES:** Child play areas (0)

### Most Valued Aspects

- **TOP VALUES:** Experiencing nature (13), wildlife habitats (10), and intrinsic value (9)
- **SECONDARY VALUES:** Wildlife corridors, natural ecosystems (8 each), outdoor recreation, and community well-being (6 each)

### Top Priorities

- **KEY FOCUS AREAS:** Conservation (18), maintenance (14), and ecosystem restoration (6)
- **SECONDARY CONCERNS:** Preservation of waterways (5), educational opportunities (3)

### OSMP Phase 1 Mission Statement Feedback

- **WHAT RESONATES:** Conservation, stewardship, and connection (4)
- **IMPROVEMENTS SUGGESTED:**
  - ▶ Broaden focus beyond humans to include wildlife stewardship
  - ▶ Support native plants and animals
  - ▶ Address grammar issues
  - ▶ Encourage recreation in appropriate areas and education about open space definitions

### OSMP Phase 1 Vision Statement Feedback

- **WHAT RESONATES:**
  - ▶ Solace and quiet spaces in urban areas
  - ▶ Support for wildlife, nature, and historical preservation
  - ▶ High-quality and diverse spaces for fostering wonder
- **IMPROVEMENTS SUGGESTED:**
  - ▶ Clarify terms like “legacy of wonder” and “high quality”
  - ▶ Address stressors like invasive plants, erosion, and urban runoff

## Guiding Golden

Guiding Golden served as a key web-based engagement tool to gather input from stakeholders throughout the planning process. Over the course of three months, the project page—supporting both the Open Space Master Plan and the Parks and Recreation Master Plan—received over 1,100 unique visitors, demonstrating strong community interest in the planning efforts. The most frequently used feature was the interactive mapping tool, which allowed users to provide location-specific feedback.

This tool allowed community members to anonymously place pins on a map within Golden’s boundaries to share feedback and view others’ submissions. A total of 41 contributions were submitted, with the majority falling under the Trails category (53%), followed by Open Space (29%), Parks (14%), and Programs and Activities (2%). While the number of contributions was relatively low compared to total visits, this is not uncommon in digital engagement efforts. It may reflect barriers such as uncertainty around open space ownership, the lack of a definitive map, or discomfort with the mapping interface. Still, the number of visits indicates broad awareness and interest in the topic.

Open space-related feedback emphasized preservation, connectivity, and long-term sustainability. Community members called for the protection of wildlife habitats, reacquisition of previously disposed land, and conversion of underutilized spaces—such as the abandoned Tucker Gulch street connection—into functional open space. Others raised the need to mitigate user-created trails through restoration and realignment and to enhance access to natural areas, particularly for families and users seeking non-mountain-bike connections.

Several participants expressed the need for clearer and more accurate maps distinguishing Golden-owned open space from Jefferson County Open Space. The current lack of clarity—especially in areas like South Illinois Open Space and Wheatfield at Mesa Meadows—complicates public understanding and informed planning. This reinforces the importance of creating an official open space map as part of the plan.

A historical note highlighted the origin of Tucker Gulch as land donated by Heinie Foss as open space, underscoring the community’s interest in preserving not only natural areas but also their historical significance in Golden’s landscape.

### HIGHLIGHTED COMMUNITY COMMENTS AND LOCATIONS:

- Recognize the Fossil Bird Track site as a national natural landmark (862 Brickyard Circle, Golden, CO 80403)
- Preserve wildlife habitat along Willow Creek Dr to 20th Street (802 24th Street, Golden, CO 80401)
- Reacquire previously disposed land for parks/ open space or explore other properties (4583–4599 Pine Ridge Rd, Golden, CO 80403)
- Mitigate user-created trails through restoration or sustainable realignment (389 North Washington Avenue, Golden, CO 80403)
- Improve open space stewardship and trail maintenance along both sides of the highway (20191–20331 W 6th Ave, Golden, CO 80401)
- Convert the abandoned Tucker Gulch street connection into open space (879 North Ford Street, Golden, CO 80403)
- Enhance open space and trail access (1453 Brickyard Road, Golden, CO 80403)
- Clarify land ownership of railroad-designated areas for potential open space use (678 Partridge Circle, Golden, CO 80403)
- Consider high-priority properties for open space or park expansion:
  - ▶ 496 White Ash Drive, Golden, CO 80403
  - ▶ 1101–1149 Catamount Dr, Golden, CO 80403



# APPENDIX C

## Open Space Property Summary

This appendix provides a summary of all open space properties included in Section 3.1. Each property is listed with its name, acreage, designated attributes, public access status, and classification. This table serves as a quick reference for understanding the primary role, level of access, and conservation value of each property within Golden's open space system.

Property Name	Acres	Attributes	Classification	Designated Public Access
Coors Tech Wetland Open Space	8.34	Ecological, Passive Visitation	Resource Protection Area	No
Cottonwood Open Space	1.78	Cultural, Ecological, Passive Visitation	Natural Area	No
Grampsas North Open Space	6.46	Ecological, Passive Visitation, Scenic	Natural Area	Yes
Grant Terry Trail Open Space	5.89	Ecological, Active Visitation, Scenic	Resource Protection Area	Yes
Heritage Dells and Tripp Ranch Meadow Open Spaces	7.66	Ecological, Passive Visitation, Scenic	Natural Area	No
Illinois Street Open Space	0.79	Active Visitation, Passive Visitation, Scenic	Natural Area	Yes
Kinney Run Open Space	87.98	Cultural, Ecological, Active Visitation, Passive Visitation, Scenic	Natural Area	Yes
Magic Mountain Open Space	16.2	Cultural, Ecological, Passive Visitation, Scenic	Resource Protection Area	No
North Hogback Open Space	28.45	Cultural, Ecological, Paleontological, Passive Visitation, Scenic	Natural Area	No
North Table Mountain Open Space	134.67	Ecological, Active Visitation, Passive Visitation, Scenic	Natural Area	Yes
Parfet Open Space	13.67	Active Visitation, Passive Visitation, Scenic	Natural Area	Yes
Parfet Prehistoric Preserve	14.08	Cultural, Ecological, Active Visitation, Passive Visitation, Scenic	Natural Area	Yes
Schweich Hill Open Space	3.94	Ecological, Active Visitation, Passive Visitation, Scenic	Natural Area	No

**APPENDIX C** | Open Space Property Summary

Property Name	Acres	Attributes	Classification	Designated Public Access
South Table Mountain Open Space	26.53	Ecological, Active Visitation, Passive Visitation, Scenic	Natural Area	Yes
Tucker and Cressman Gulch Open Space	35	Ecological, Active Visitation, Passive Visitation	Natural Area	Yes
Welch Ditch	N/A	Cultural, Ecological, Passive Visitation	Natural Area	No



# APPENDIX D

## Capital Improvement Plan

# Capital Improvement Plan

## Rough Order of Magnitude (as of July 2025)

The following estimates provide a rough order of magnitude for key investments needed to advance open space management priorities. These figures are intended to guide preliminary budgeting and future funding decisions.

---

### OSMP PHASE 3—\$125,000

Includes field-based inventories, tailored maintenance planning, community engagement, and review of Phase 2 recommendations. See Action Item 4.6.09 for additional detail.

---

### OPEN SPACE SIGNAGE IMPROVEMENTS—\$150,000

Covers a combination of entry signage, wayfinding and orientation signs, and educational or interpretive signage across open space properties.



City of  
Golden

# OPEN SPACE MASTER PLAN