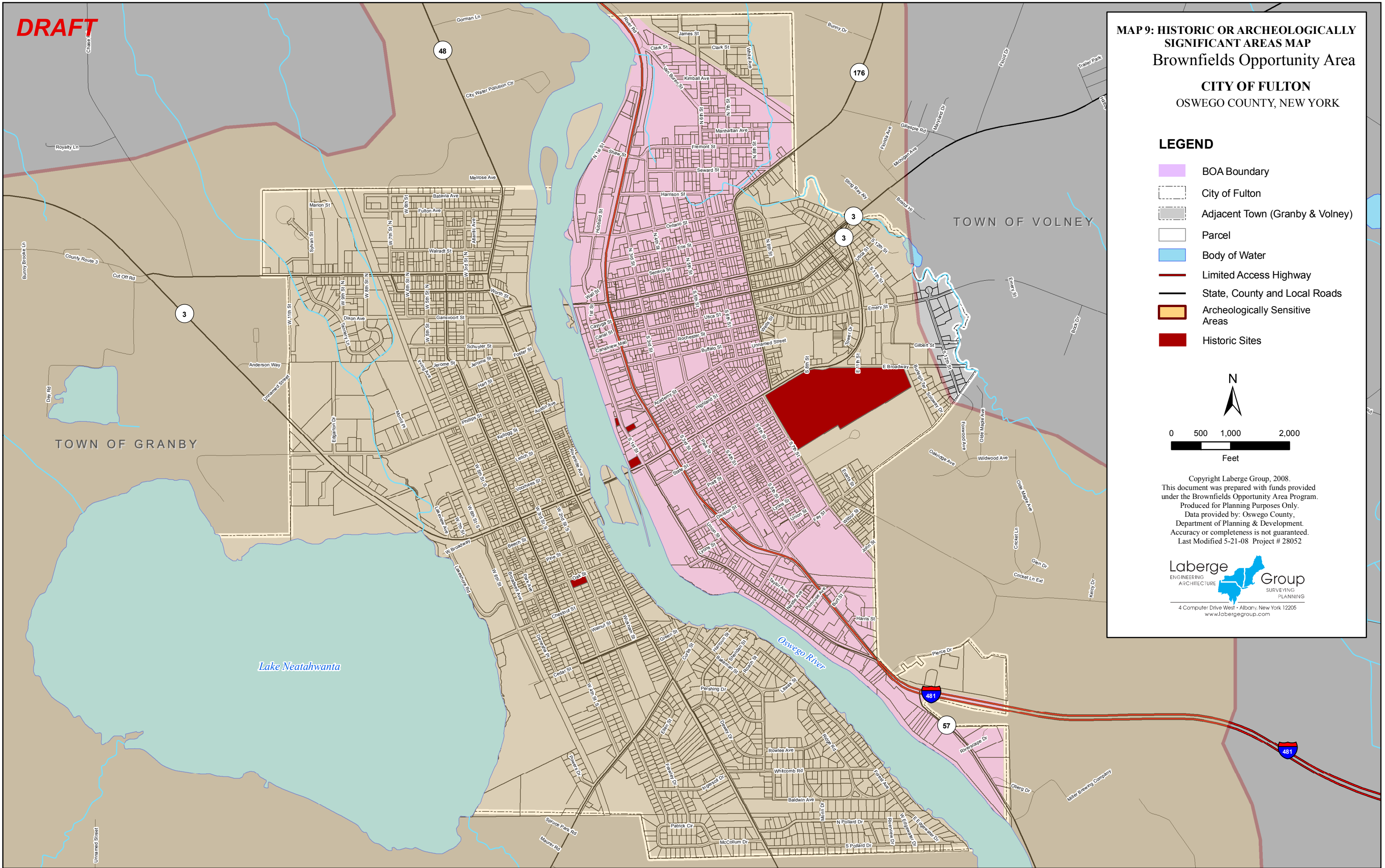
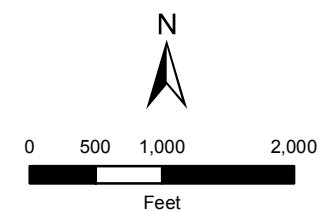


DRAFT



**MAP 9: HISTORIC OR ARCHEOLOGICALLY
SIGNIFICANT AREAS MAP**
Brownfields Opportunity Area
CITY OF FULTON
OSWEGO COUNTY, NEW YORK

- LEGEND**
- BOA Boundary
 - City of Fulton
 - Adjacent Town (Granby & Volney)
 - Parcel
 - Body of Water
 - Limited Access Highway
 - State, County and Local Roads
 - Archeologically Sensitive Areas
 - Historic Sites



Copyright Laberge Group, 2008.
This document was prepared with funds provided
under the Brownfields Opportunity Area Program.
Produced for Planning Purposes Only.
Data provided by: Oswego County,
Department of Planning & Development.
Accuracy or completeness is not guaranteed.
Last Modified 5-21-08 Project # 28052

Laberge
ENGINEERING
ARCHITECTURE
Group
SURVEYING
PLANNING
4 Computer Drive West • Albany, New York 12205
www.labergegroup.com