



**Oswego County Hazard Mitigation Plan Update**  
Stakeholder and Public Engagement Session  
August 22, 2023



Scan to access interactive elements at the end of the presentation




**Executive Committee** Barton & Loguidice

Oswego County	<b>Emergency Management</b> <ul style="list-style-type: none"> <li>• Cathleen Palmitesso</li> <li>• Terry Bennett</li> <li>• Renee Fox</li> <li>• Tyler Peet</li> </ul>
Barton & Loguidice	<ul style="list-style-type: none"> <li>• Johanna Duffy</li> <li>• Dan Theobald</li> </ul>
NYS DHSES Contact	<ul style="list-style-type: none"> <li>• Beth O'Reilly</li> </ul>

**Hazard Mitigation Planning** Barton & Loguidice


Phases of Emergency Management

1. Preparedness
2. Response
3. Recovery
4. Mitigation



**Hazard Mitigation Planning** Barton & Loguidice

- Oswego County received a grant through disaster relief (DR) FEMA 4480 to update their 2020 Multi-Jurisdictional Hazard Mitigation Plan (HMP)
  - 2020 HMP: [https://www.oswegocounty.com/departments/public\\_safety/emergency\\_management/hazard\\_mitigation.php](https://www.oswegocounty.com/departments/public_safety/emergency_management/hazard_mitigation.php)
- Hazard mitigation planning develops long-term actions that aim to reduce:
  - Loss of life
  - Number/severity of injuries
  - Property & natural resource damages



## Plan Components

Barton & Loguidice

- County Profile
- Planning Process
- Risk Assessment
- Hazard Profiles
- Hazard Vulnerability Assessment
- Hazard Mitigation Planning Goals
- Mitigation Action and Strategy Development
- Plan Implementation, Monitoring, and Maintenance
- Jurisdictional Annexes
  - Oswego County
  - 33 jurisdictions (2 Cities, 21 Towns, 10 Villages)



## Plan Content

Barton & Loguidice

- Newest guidance – FEMA April 2023
  - Include representatives from a broad range of sectors, such as community lifelines and non-profits that support underserved communities
  - Status updates for 2020 mitigation actions
  - Develop a mitigation action or strategy for each Hazard Of Concern (HOC)
  - Link mitigation actions to identified vulnerabilities
  - Protect critical infrastructure to the 500-year storm event
  - Consider the effects of climate change and other future conditions
  - Address existing mitigation plan requirements of the HHPD grant program to include dam risks
  - Describe building codes and land use and development ordinances



## Progress

Barton & Loguidice

- Monthly meetings with Steering Committee
- Municipal Jurisdictions kickoff meeting held in July 19, 2023
- Individual jurisdictional facilitations and data collection ongoing
  - 3 jurisdictional meetings completed (starting last week)
- Public and Stakeholder outreach throughout process
  - Kickoff engagement session today - August 22, 2023
  - Draft Plan review session spring 2024



## Natural Hazard Analysis

Barton & Loguidice

- Natural Hazards
  - Flooding, Severe Thunderstorm/Windstorm, Ice Storm, Ice Jam, Extreme Temperatures, Drought, Wildfire, Earthquake, Landslide, Severe Winter Storm, Tornado

Hazard Analysis Criteria				
Score	Extent	Onset	Impact	Frequency
1	One location	Days of warning	Minor damages/ injuries	Rare
2	Several locations	Hours of warning	Moderate damages/ injuries	Infrequent
3	Large area	No warning	Severe damages/ injuries/ deaths	Regular

## Hazards Profiled by County in 2020

Barton&Loguidice

### Natural hazards profiled by Oswego County in 2020 ...

- Severe Winter Snowstorm
- Severe Thunderstorm, Wind or Tornado
- Flood
- Ice Storm
- Extreme Temperatures

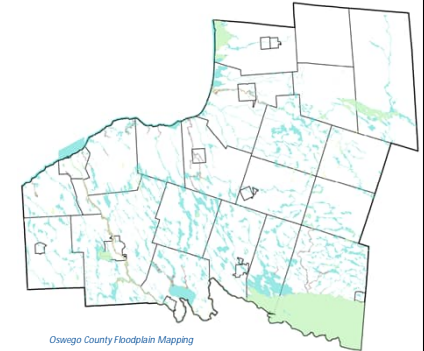
### Primary hazards identified so far during municipal engagement...

1. Severe Winter Storm
2. Flooding
3. Severe Thunderstorm / Windstorm / Hail
4. Ice Storm
5. Extreme Temperatures

## Vulnerability Assessment

Barton&Loguidice

- Existing assets and resources
  - Critical infrastructure
  - Emergency shelters
  - Evacuation routes
  - Communication systems
- Vulnerability
  - Hazard-prone locations (i.e., floodplains)
  - Condition of critical infrastructure
  - Areas of concentrated populations
  - Isolated populations (physical, linguistically, etc.)



## Mitigation Action and Strategy Development

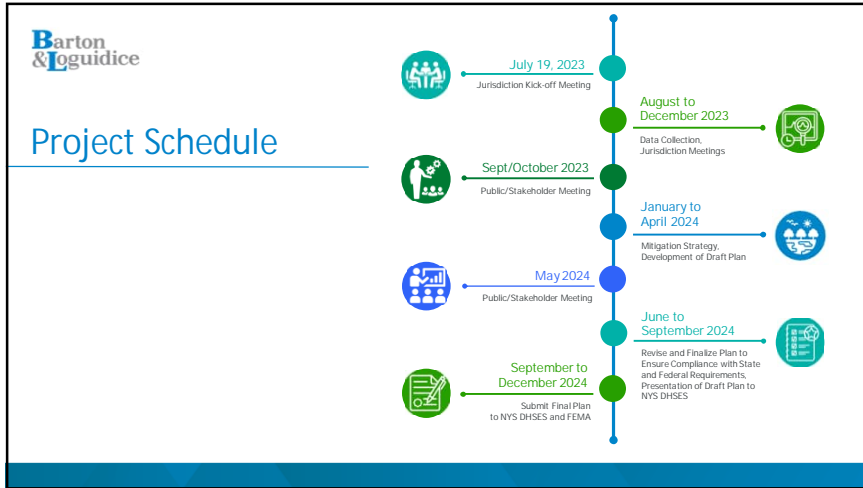
Barton&Loguidice

- Participating Jurisdictions must identify at least One Mitigation Action Per Hazard Of Concern
  - Actions and Strategies can cover:
    - Hazard Prevention
    - Property Protection
    - Structural Projects
    - Natural Resource Protection
    - Emergency Services
    - Public Education and Awareness
- Each action receives preparation of an implementation plan
  - Estimate costs, potential funding sources, involved agencies, and implementation timeframes, action alternatives

## Example Mitigation Actions

Barton&Loguidice

- Relocate critical facilities outside of floodplains
- Acquire lands along significant waterways to provide buffers
- Stabilize Lake Ontario shoreline and secure infrastructure
- Elevate roadways above
- Provide for snow storage in densely populated areas
- Install standby generators at emergency sheltering locations and other critical facilities
- Upsize culverts in flood-prone areas
- Complete feasibility studies to evaluate drainage problems and potential solutions
- Public education campaigns



**Barton & Loguidice**

### Always happy to receive your thoughts and input

- **Contact Us:**

<p>Terry Bennett, Program Coordinator          Oswego County Emergency Management Office          200 North 2nd Street          Fulton, NY 13069          Phone: (315) 591-9150          Email: <a href="mailto:Terry.Bennett@OswegoCounty.com">Terry.Bennett@OswegoCounty.com</a></p>	<p>Barton &amp; Loguidice, D.P.C.          443 Electronics Parkway          Liverpool, NY 13088          Dan Theobald          Phone: (518) 218-1801          Email: <a href="mailto:dtheobald@bartonandloguidice.com">dtheobald@bartonandloguidice.com</a>          Johanna Duffy          Phone: (315) 457-5200          Email: <a href="mailto:jduffy@bartonandloguidice.com">jduffy@bartonandloguidice.com</a></p>
--	--

### Attendee Engagement

**Barton & Loguidice**

OR [www.pollev.com/dant111](http://www.pollev.com/dant111)

**Barton & Loguidice** | The Experience to Listen. The Power to Solve.

# Thank you!

[bartonandloguidice.com](http://bartonandloguidice.com)