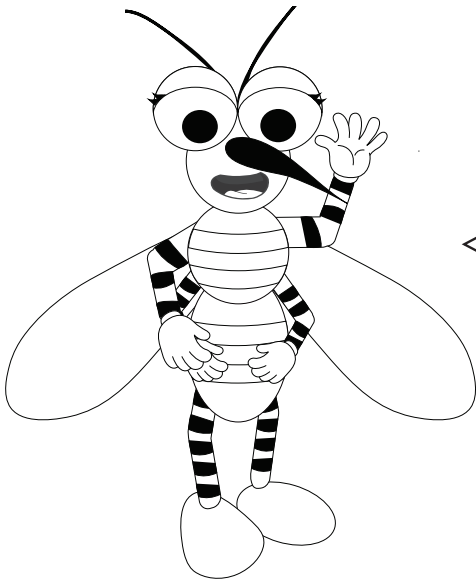


Activity Book



Hi!
I'm Missy Keeto,
the mosquito!
Want to learn
about insects
with me?





Do you want to learn about
insects with me?

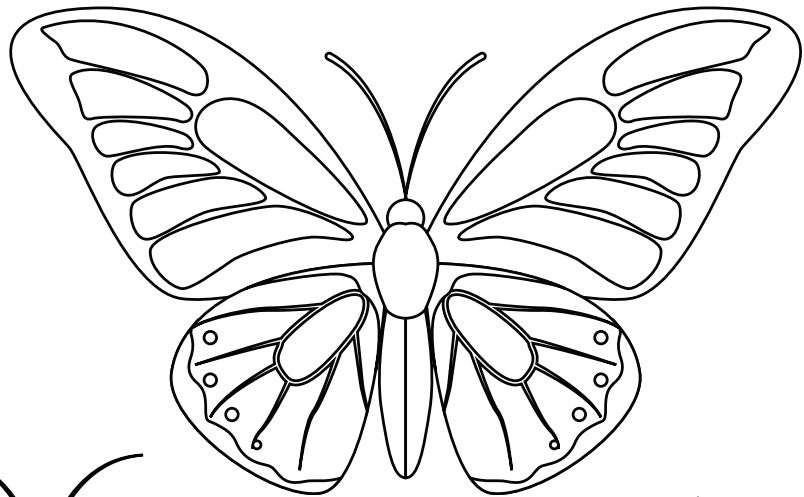
I can't wait to teach you about
mosquitoes, but let's start with
some other insects first.

Local Insects

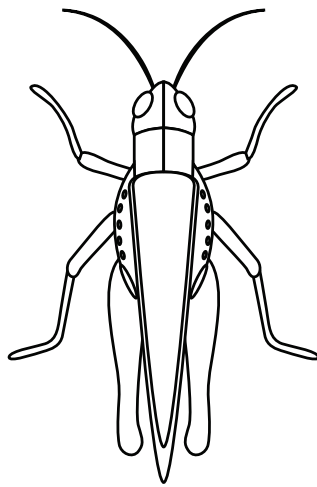
There are many kinds of insects that you can find in our area.
What are some insects you have seen?

*Color the
insects you have
seen.*

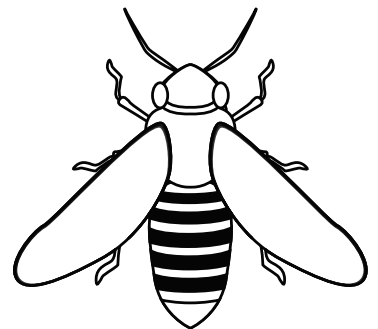
*Circle the
insects you have
studied.*



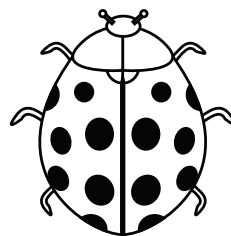
Butterfly



Grasshopper



Bee

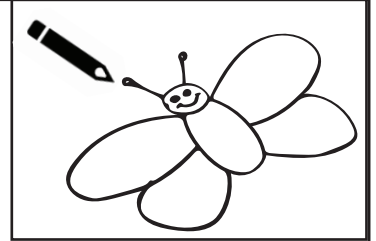


Ladybug

How do you know if it is an insect?

Draw a picture of your favorite insect in the box below.

*Then, write a sentence (or more) describing
what you like about that insect.*



Insect Anatomy (Body Parts)

Count the legs, antennae, and segments below.

All insects have:

a hard outer layer called an exoskeleton

_____ legs (3 pairs)

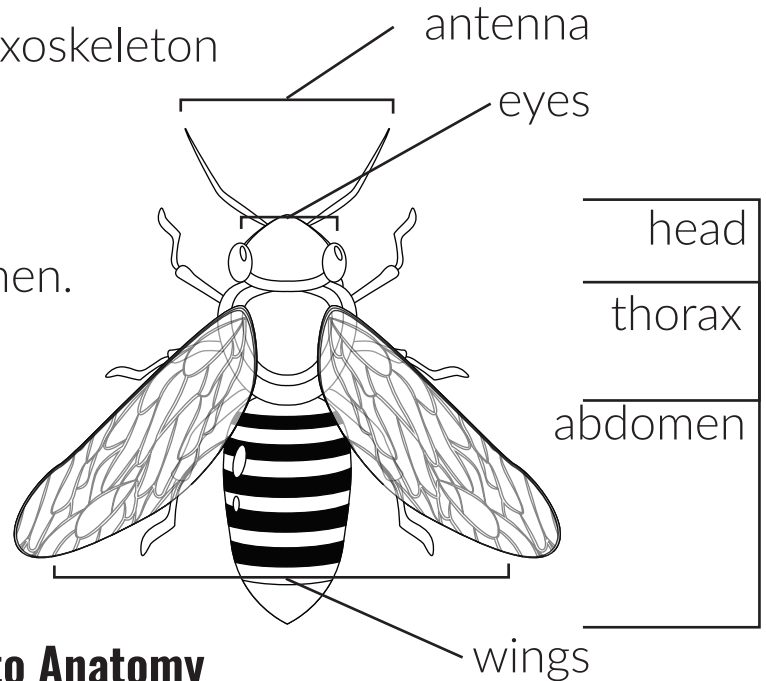
_____ antenna (1 pair)

_____ segments:

head, thorax, and abdomen.

Most insects also have

wings and compound eyes.



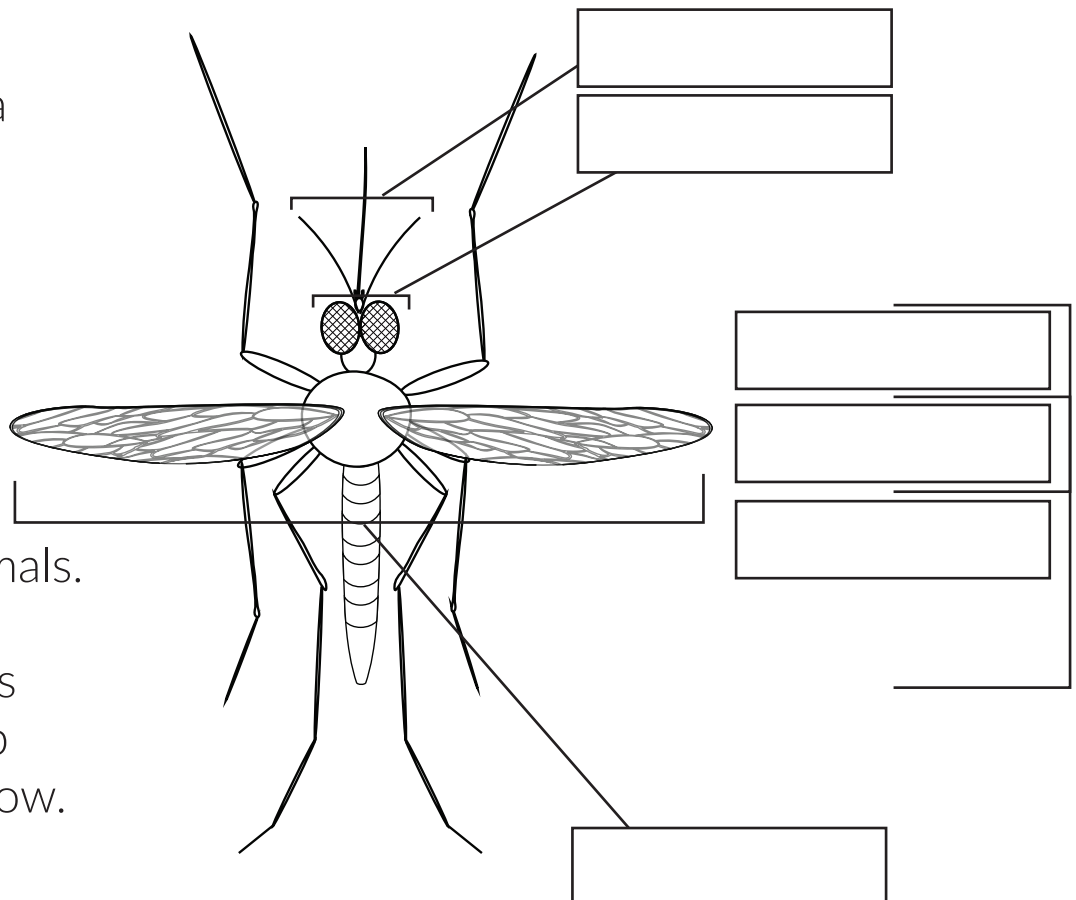
Mosquito Anatomy

*Label the body parts of the mosquito like above:
head, thorax, abdomen, antenna, eyes, and wings*

Mosquitoes have a long, thin mouth called a proboscis.

All mosquitoes drink plant nectar, but only female mosquitoes bite people or animals.

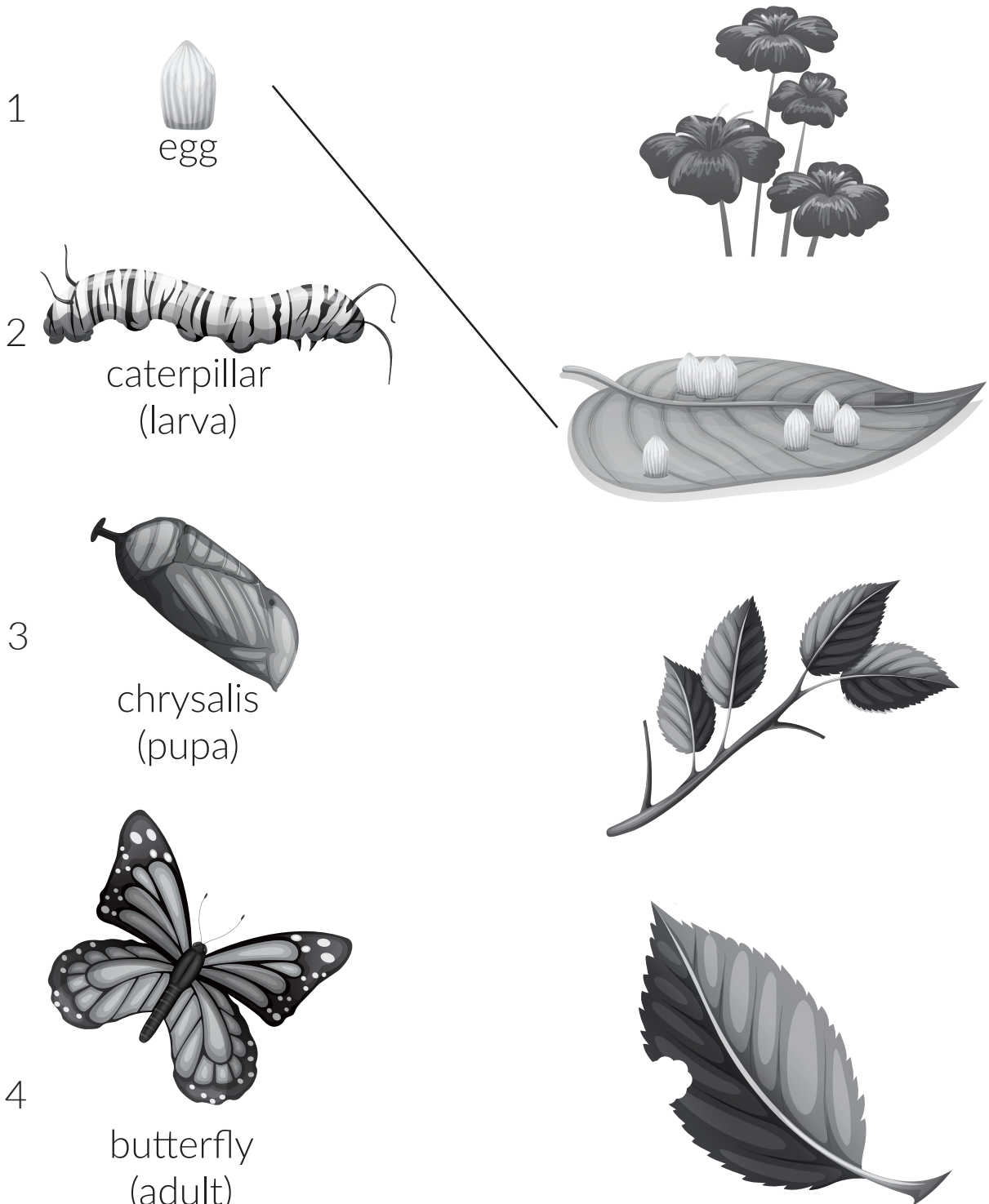
Female mosquitoes need blood to help make their eggs grow.



Munch and Grow

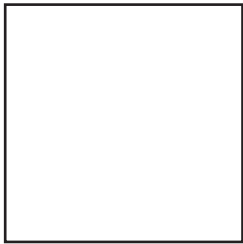
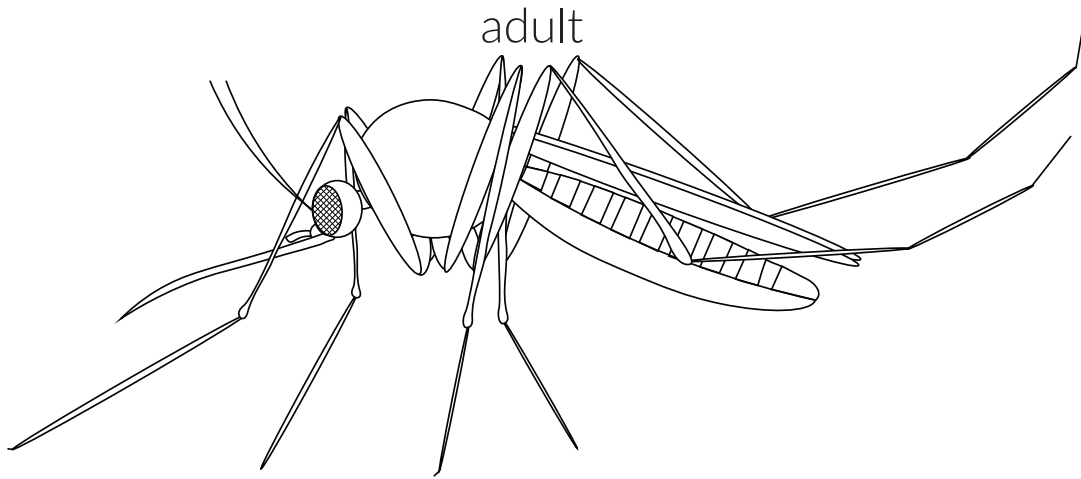
All insects go through a metamorphosis,
from egg, to larva, to pupa, to adult.
Each stage needs a different habitat to grow.

*Draw a line from each stage of the butterfly life cycle
to the habitat where you would see it.*

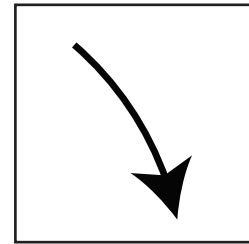


The Mosquito Lifecycle

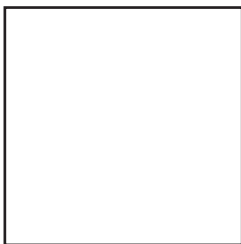
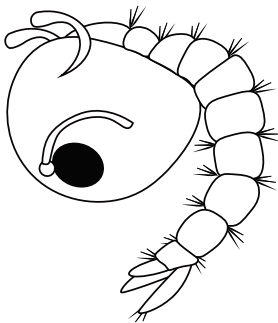
Color the 4 phases of the mosquito lifecycle,
then draw the arrows in the boxes to show which phase comes next.



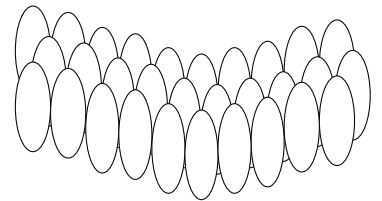
A mosquito can go
from egg to adult in
about 7 days.



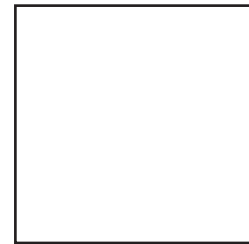
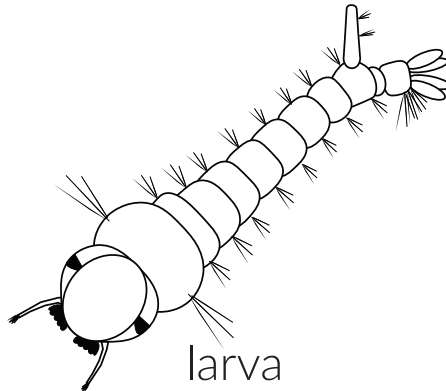
pupa



A mosquito egg raft,
larva, and pupa all
need standing water
to grow.



eggs



Mosquito Word Search

A mosquito is a vector,
an animal that can transmit disease or cause discomfort.

That means mosquito bites make you itchy,
and can also make you or other animals sick.

Find these vector related words in the word search below:

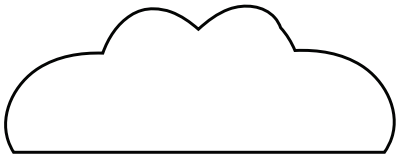
BIRD
BITE
BLOOD
DOG
HEARTWORM

HORSE
HUMAN
ITCH
MALARIA
MOSQUITO

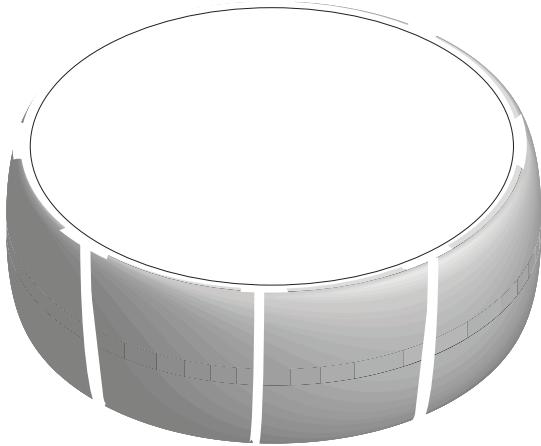
NECTAR
VECTOR
VIRUS
WESTNILE
ZIKA

O	O	G	H	E	D	W	L	H	B
N	O	T	T	U	V	F	E	N	L
D	H	I	I	E	M	A	E	E	O
D	B	O	C	U	R	A	A	C	O
A	R	T	R	T	Q	K	N	T	D
N	O	I	W	S	I	S	K	A	H
R	C	O	B	Z	E	W	O	R	C
F	R	S	U	R	I	V	U	M	T
M	W	E	S	T	N	I	L	E	I
M	A	L	A	R	I	A	B	C	M

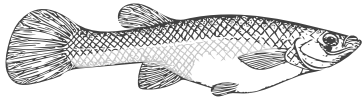
Mosquitofish Habitats



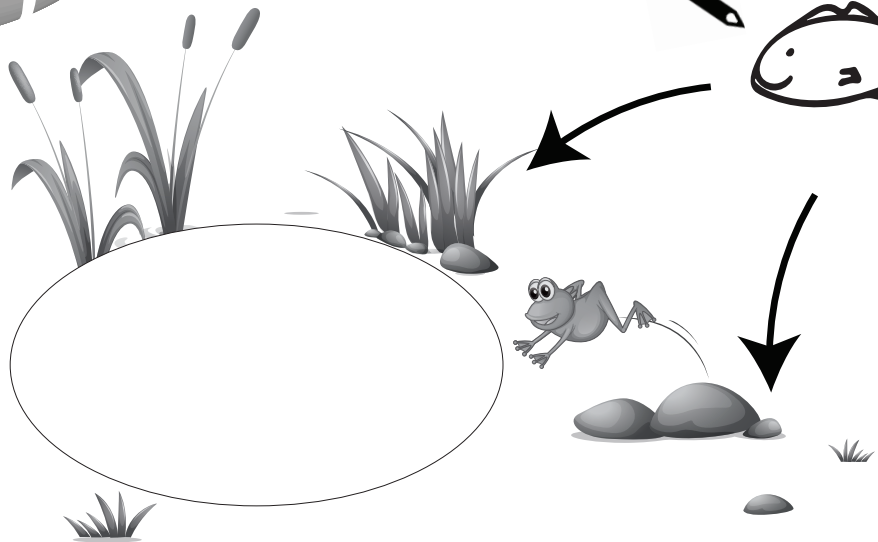
Draw the mosquitofish in the mosquito habitats.



Mosquitofish are a great predator of mosquitoes.



Mosquitofish can eat **100s** of mosquito larvae each day.



How many fish did you draw in the pond? _____

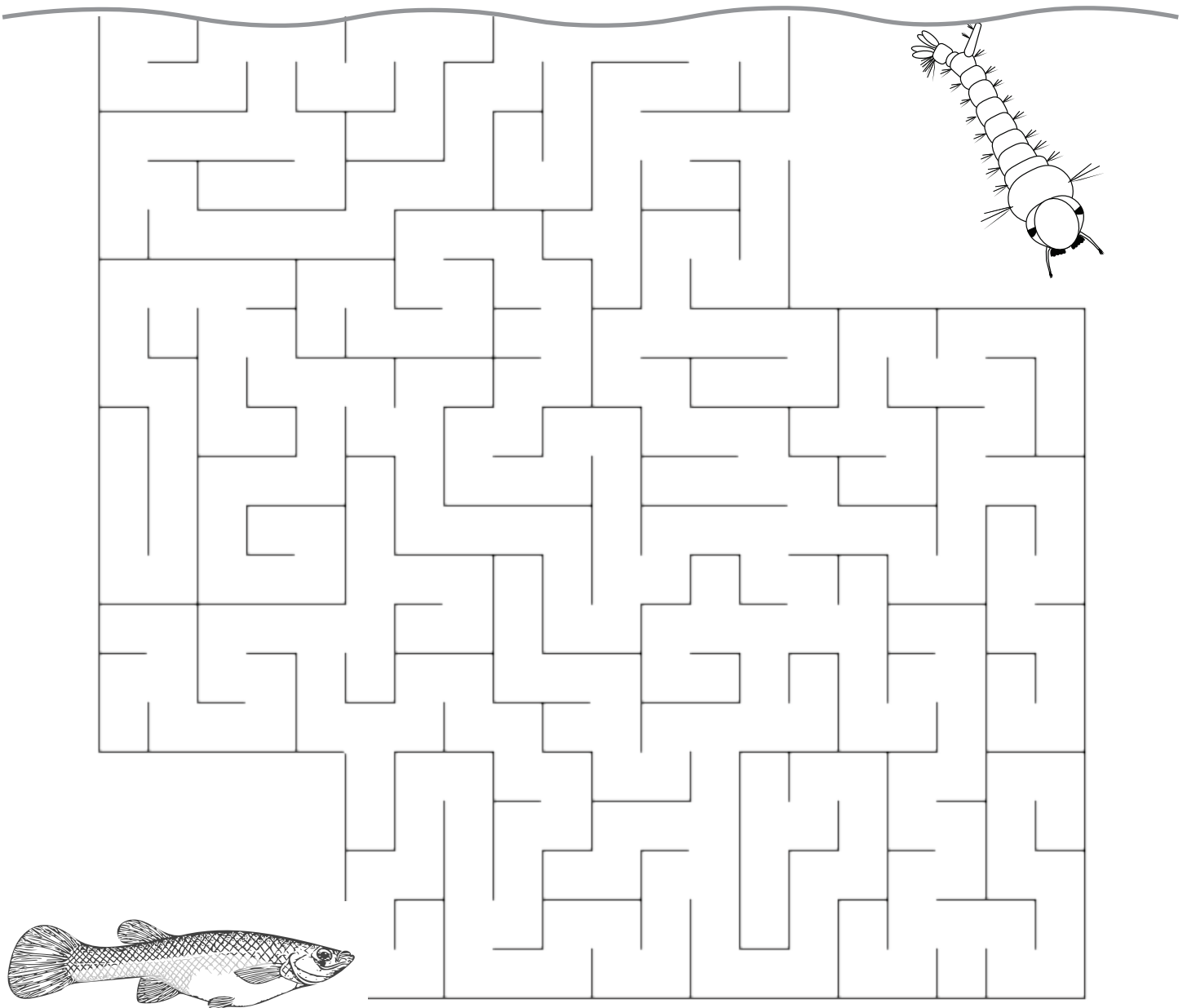
If each fish eats 100 larvae per day, how many larvae would be eaten in that pond in one day? _____
...in a week? _____



Mosquitofish Maze

The wiggly larva stays at the top of the water so it can breathe oxygen.

Help the mosquitofish swim through the maze to eat the mosquito larva at the top of the water.



Front Yard Source Search

A source is what we call the place where mosquitoes grow.
Mosquitoes can grow in just a bottle-cap full of water.



Color the yard, and circle all the places a mosquito could be growing.
(Hint: You will likely find a mosquito flying nearby.)



The 4 D's Word Scramble

Unscramble the words in the sentences below to find out how you can protect yourself from mosquito bites.

Remember to follow the 4 D's:

Dump all standing _____ so mosquitoes can't grow.
trawe

Dress in _____ and _____ when mosquitoes are out.
gonl leseves nspat

Limit your activity _____ at **Dusk and Dawn**.
usdieot

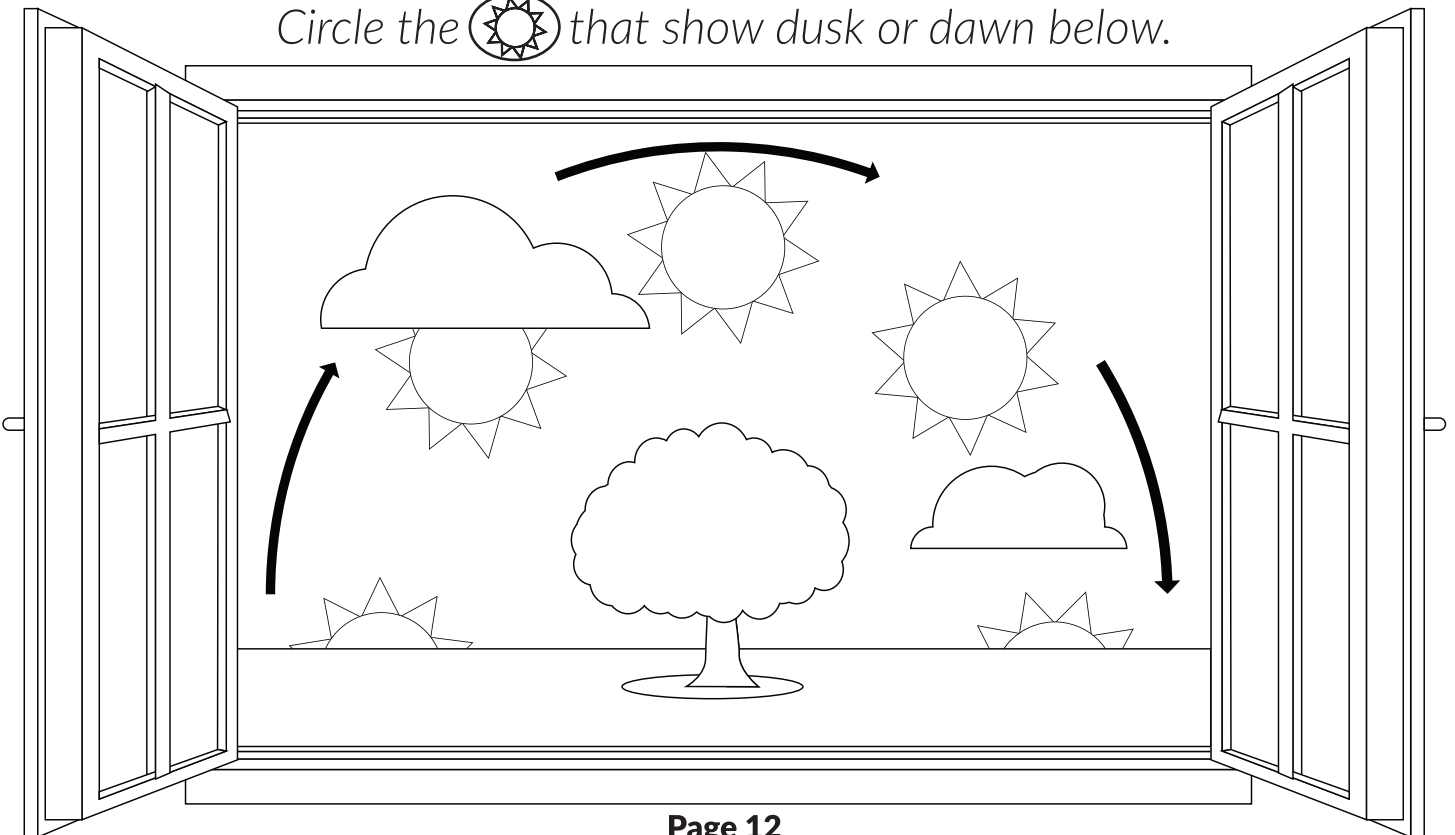
Defend yourself by using insect _____ so mosquitoes can't smell you.
tperlenel

Sunrise & Sunset

Mosquitoes are most active at dusk and dawn, so limit your activity outside when there is less light.

Where would you see the sun at dusk or dawn?

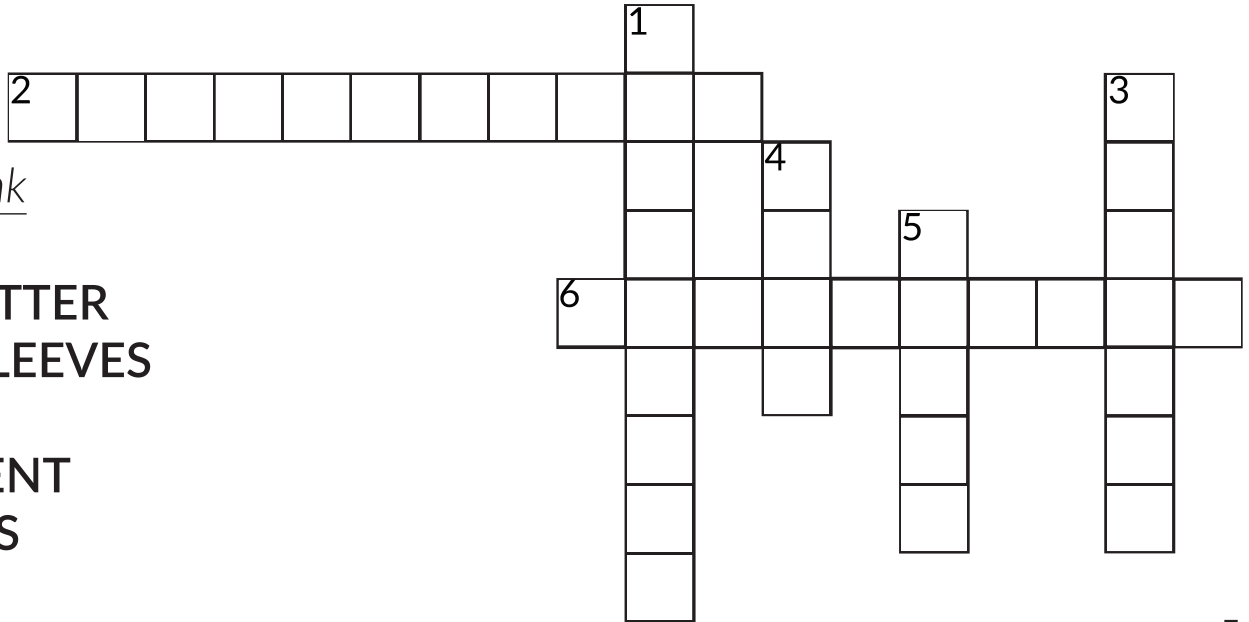
Circle the  that show dusk or dawn below.



Missy's Crossword

Missy is showing off some items to keep the bites away.

Complete the crossword puzzle using the number labels below.

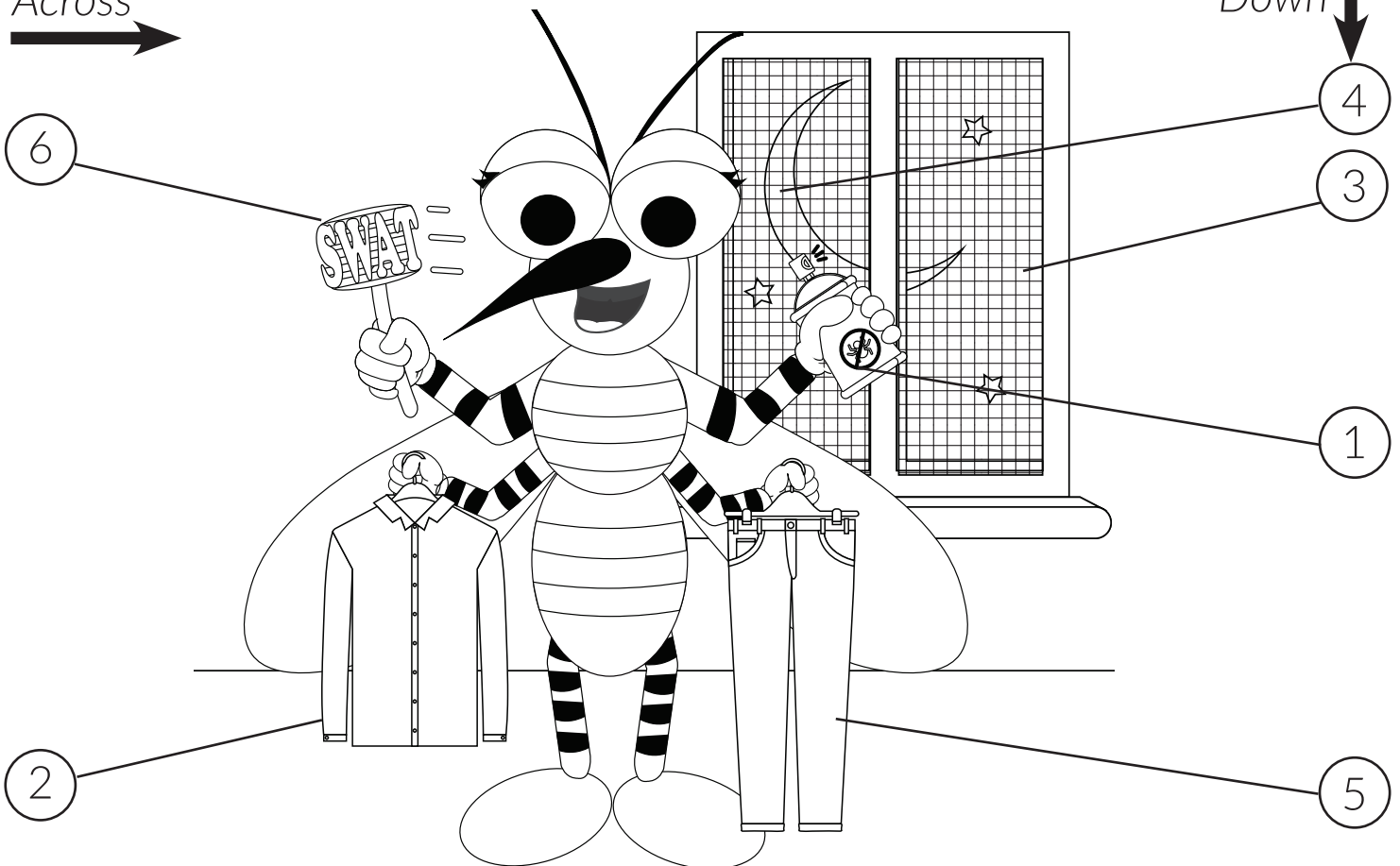


Word bank

DUSK
FLYSWATTER
LONG SLEEVES
PANTS
REPELLENT
SCREENS

Across →

Down ↓



Mosquito Hunt

Now that you know where mosquitoes grow,
it's your turn to see if you can hunt down any
mosquito sources in your yard at home.

If you find any standing water,
be sure to dump the water out so mosquitoes don't grow there.

*Go through the checklist below.
Put a check in the appropriate box.*

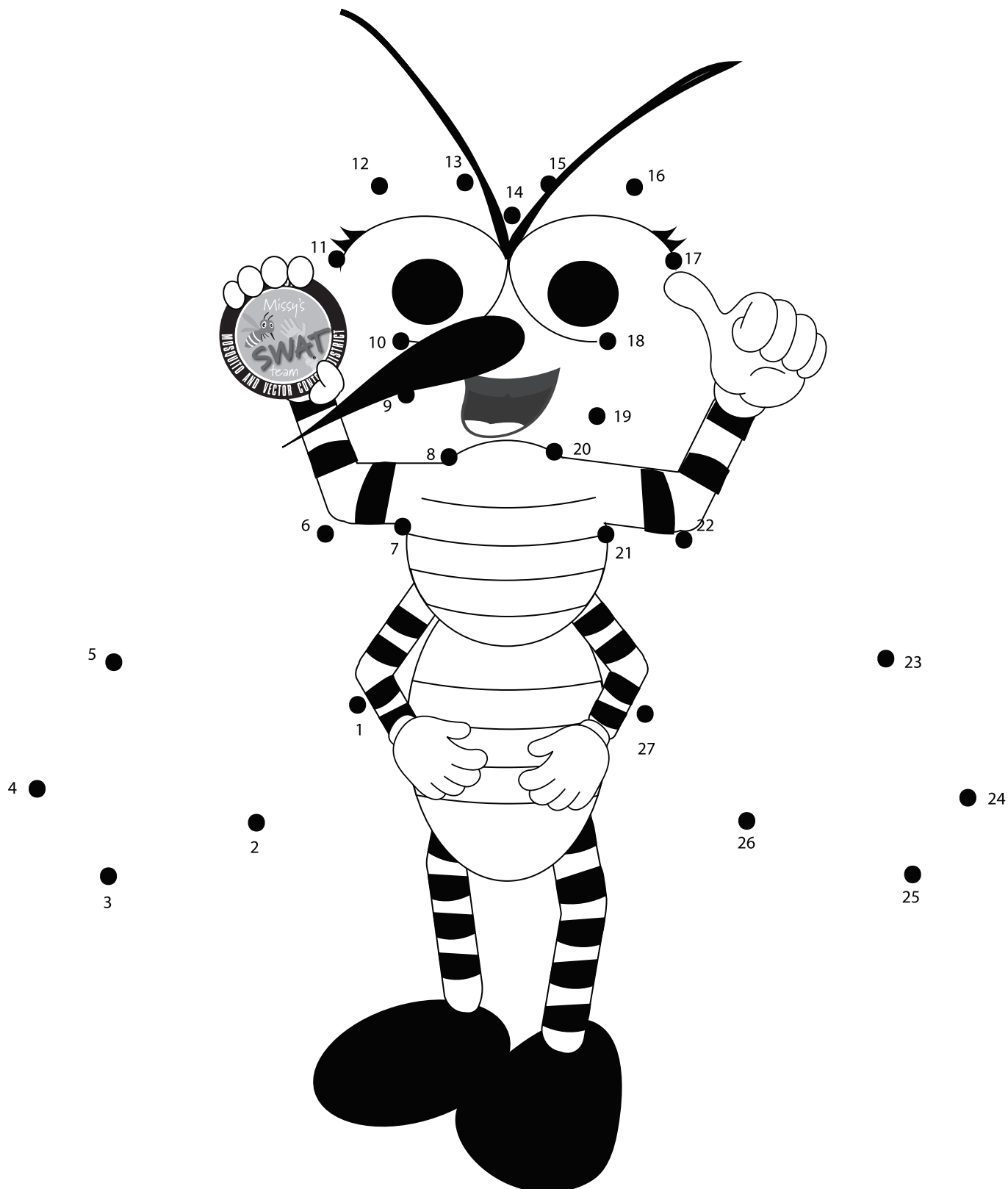
	I found these	I found water	I didn't find these
Bird Baths			
Boats			
Buckets			
Cans, bottles or jars			
Flower pots and saucers			
Ornamental ponds			
Pet water dishes			
Rain barrels			
Tires			
Toys			
Tree holes			
Wheel barrows			
Other: _____			
Other: _____			
Other: _____			
Other: _____			



You helped Missy complete the Activity Book!

Completing this Activity Book means you are now
a member of Missy's Swat Team!

Connect the dots below to reveal Missy holding her new badge.



Missy's Swat Team

To make your membership official,
write your name in the pledge below, and read the pledge out loud.

Then cut out your badge below,
and pin it to your shirt or tape it to your fridge or wall.

"I, _____,
name

pledge to always dump standing water
and always swat mosquitoes,
except Missy."



Shasta Mosquito & Vector Control District
19200 Latona Road, Anderson, CA 96007
P. 530-365-3768 | F. 530-365-0305
www.ShastaMosquito.org