

HISTORIC RESOURCES SURVEY

HISTORIC DISTRICT OF ST. MARYS

St. Marys, Georgia



Prepared for:

The City of St. Marys

In coordination with the Community Development Department



QUATREFOIL
HISTORIC PRESERVATION CONSULTING

FINAL - August 10, 2022

HISTORIC RESOURCES SURVEY

of the

HISTORIC DISTRICT OF ST. MARYS
ST. MARYS, GEORGIA

Prepared for
The City of St. Marys

In coordination with the
Community Development Department

By

Sarah Ward, AICP – Project Administrator, Co-Project Manager
Robert A. Ciucevich, M.P.H. – Co-Project Manager, Historic Preservation Planner



**Ward Architecture +
Preservation**

625 East 44th Street
Savannah, Georgia 31405
www.wardarch.com
sward@wardarch.com 912 | 596-4240



AND

QUATREFOIL CONSULTING

22 West Bryan Street, #139
Savannah, Georgia, 31401
racquatrefoil@aol.com
912 | 547-19



Figure 1. View along St. Marys and Osborne Streets, looking northwest from the public pavilion, St. Marys, Georgia.

This historic resources survey has been financed in part with federal funds from the National Park Service, U.S. Department of the Interior, through the Historic Preservation Division of the Georgia Department of Community Affairs. However, the contents and opinions do not necessarily reflect the views or policies of the Department of the Interior or the Georgia Department of Community Affairs, nor does the mention of trade names, commercial products or consultants constitute endorsement or recommendation by these agencies. This program received Federal financial assistance for identification and protection of historic properties. Under Title VI of the Civil Rights Act of 1964, Section 504 of the Rehabilitation Act of 1973, and the Age Discrimination Act of 1975, as amended, the U. S. Department of the Interior prohibits discrimination on the basis of race, color, national origin, age, gender or disability in its federally-assisted programs. If you believe you have been discriminated against in any program, activity, or facility as described above, or if you desire further information, please write to: Office for Equal Opportunity, National Park Service, 1849 C Street, N.W., Washington, D.C. 20240

TABLE OF CONTENTS

LIST OF FIGURES3

LIST OF TABLES6

INTRODUCTION7

 Executive Summary7

 Project Description.....9

 Summary of Previous Preservation Projects 11

 Developmental History 14

SURVEY RESULTS.....38

 Methodology38

 Historic Resources Lost Since 200139

 Construction Dates40

 Original Use41

ARCHITECTURAL ANALYSIS42

 Architectural Styles42

 Architectural Types51

RECOMMENDATIONS FOR FUTURE PRESERVATION INITIATIVES.....77

BIBLIOGRAPHY79

APPENDIX 1:81

 Index of Historic Resources Surveyed81

 Cross-Reference of Previous Historic Resource Surveys81

APPENDIX 2:108

 St. Marys Survey Map.....108

LIST OF FIGURES

Figure 1. View along St. Marys and Osborne Streets, looking northwest from public pavilion, St. Marys, Georgia	1
Figure 2. St. Marys Historic Survey Area and Local Historic District Boundary (City of St. Marys 2021)	8
Figure 3. St. Marys Local Historic District Map (City of St. Marys 2022)	10
Figure 4. St. Marys National Register of Historic Places Boundary Map, c.1975	13
Figure 5. Town plan laid out by James Finley, county surveyor, in 1788	16
Figure 6. Osborne Street looking North c.1890	17
Figure 7. 1800s image of Union Church, later Presbyterian Church	19
Figure 8. The Customs House located near Sterlings Grocery Store fronting Weed Street, no date.	19
Figure 9. First Presbyterian Church, no date.	20
Figure 10. Orange Hall (GNAHRGIS #12618), no date.	21
Figure 11. New Methodist Church constructed in 1858	22
Figure 12. Map of the City of St Marys, GA from 1862 publication	23
Figure 13. Sterlings Grocery Store located at 219 Osborne Street, ca.1953.	25
Figure 14. Camden County map showing city and communities by Jim Tolley	26
Figure 15. Sailing vessels along St. Marys waterfront ca.1900.	28
Figure 16. The Long Hotel on right and the Catholic Church on the left on Osborne Street looking north ca.1875	29
Figure 17. The Riverside Hotel at Osborne Street, looking northwest, ca. 1910	29
Figure 18. Toonerville Trolley, no date.	30
Figure 19. Excerpt from 1935 “Wash Tubbs” comic strip by Roy Crane.	31
Figure 20. 1936 St Marys Quadrangle Map, detail of St. Marys (USGS 1936)	34
Figure 21. Parsonage for Methodist Church, no date.	35
Figure 22. The Methodist sanctuary under construction ca.1965.	36
Figure 23. Kindergarten class with the Toonerville Trolley stopped outside of Orange Hall, no date.	37
Figure 24. Orange Hall (c.1835) - 303 Osborne Street, #12618	44
Figure 25. Bachlott-Porter House (c.1911) - 220 Osborne Street, #12625	44

Figure 26. Miller-Arnou House (c.1900) - 105 W. Bryant Street, #12588	45
Figure 27. First Baptist Church (c.1950) - 102 W. Weed Street, #281213	46
Figure 28. Frohock-Bauknecht House (c.1907) - 201 Ready Street, #12626	47
Figure 29. 109 Wheeler Street (c.1930), #12589	48
Figure 30. St. Marys Women's Club (c.1954) - 412 Osborne St., #283418	49
Figure 31. 313 Ready Street (c.1962), #281594	50
Figure 32. Stone-Bunkley-Guy House (c.1885) - 207 Ready Street, #12624	53
Figure 33. Sandiford-Goodbread House (c.1874) - 209 Osborne St., #12613	54
Figure 34. 200 E. Weed Street (c.1890), #12639	55
Figure 35. Smith-Aldridge House (c.1919) - 103 E. Weed Street, #12633.	56
Figure 36. 105 Wheeler Street (c.1940), #12586	57
Figure 37. Townsend-Gay House (c.1905) - 202 E. Bryant Street, #12598	57
Figure 38. 310 Wheeler Street (c.1950), #281597	58
Figure 39. 606 Ready Street (c.1955), #283619	59
Figure 40. 512 Wheeler Street (c.1950), #283199	59
Figure 41. 407 Wheeler Street (c.1967), #283183	60
Figure 42. 200 E. Bryant Street (c.1960), #281078	61
Figure 43. 209 W. Bryant Street (c.1965), #280984	62
Figure 44. 209 W. Dillingham Street (c.1975), #283184	62
Figure 45. Bloodworth House (c.1870), #12622	63
Figure 46. John Rudolph House (c.1874) - 310 Osborne Street, #12627	64
Figure 47. Rudolph-Riggins House (c.1885) - 229 Osborne Street, #12614	65
Figure 48. 307 Ready Street (c.1905), #12631	66
Figure 49. Robert Bunkley House (c.1915) - 404 Ready Street, #12649	67
Figure 50. 211 E. Weed Street (c.1899), #12640	67
Figure 51. 219 ½ Osborne Street (c.1910), #12616	67
Figure 52. Arnou House (c.1834) - 206 Ready Street, #12639	68
Figure 53. 206 W. Weed Street (c.1900), #281397	69
Figure 54. Bachlott-Porter House (c.1911) - 220 Osborne Street, #12625	69
Figure 55. Jackson-Clark-MacDonnell House (c.1801) - 314 Osborne Street #12628	70
Figure 56. 102 E. Weed Street (c.1950), #281143	71

Figure 57. 508 Norris Street (c.1970), #283529	71
Figure 58. Carriage House Apartments (c.1953) - 104 W. Stable Alley, #280871	72
Figure 59. 207 E. Dillingham Street (c.1970), #283129	73
Figure 60. 102 E. Bryant Street (c.1950), #12620	73
Figure 61. 211 W. Dillingham Street (c.1965), #283188	73
Figure 62. St. Marys United Methodist Church (c.1958) - 105 E. Conyers Street, #281604	74
Figure 63: St. Marys United Methodist Church (c.1858) - 105 E. Conyers Street, #12639	74
Figure 64. St. Marys Presbyterian Church (c.1801) - 100 W. Conyers Street, #12636	74
Figure 65. 300 Osborne Street (c.1955), #281576	75
Figure 66. Cam Sheffield Building (c.1940) - 112 Osborne Street, #12581	75
Figure 67. The Riverhouse Hotel (c.1916) - 105 Osborne Street, #12578	76
Figure 68. Long Hotel/Spencer House (c.1870) - 101 E. Bryant Street, #12621	76

LIST OF TABLES

- Table 1.** Previously Surveyed Resources that no longer exist
- Table 2.** Tabulation of Existing Resources by Construction Date
- Table 3.** Tabulation of Existing Resources by Original Use
- Table 4.** Tabulation of Existing Resources by Architectural Style
- Table 5.** Tabulation of Existing Resources by Architectural Type
- APPENDIX 1:** Index of Historic Resources Surveyed
 Cross Reference of Prior Surveys

INTRODUCTION

Executive Summary

The survey of the St. Marys historic district and surrounding area was performed during the 2021 Historic Preservation Grant funding cycle. The in-depth survey evaluated all resources 40 years of age or older, constructed during or before 1982 within the survey area (Figure 2). This resulted in 229 resources (222 buildings, one structure, two park/landscapes, three objects, and one cemetery) updated or newly recorded into the Georgia Natural, Archaeological, and Historic Resource Geographic Information System (GNAHRGIS) database.

The in-depth survey evaluated all buildings for architectural style, building type and methods of construction. Buildings were mostly constructed during the Cold War period (1950-1980), followed by the WWII/pre-Cold War period (1940-1949). The most common architectural styles were Queen Anne and Plain-style Ranch houses. The American Small House was overwhelmingly the most common building type within the survey area. The Linear Ranch type was the second most common type. Sixty-four (64) resources were an undefined building type.

This survey did not include an evaluation of NRHP-eligibility for resources as per HPD standard. Further study and evaluation of potentially NRHP-eligible resources is recommended. Considerations include updating the historic building map, extending the period of significance of the NRHP historic district as listed, and expanding the boundary to the west and north.

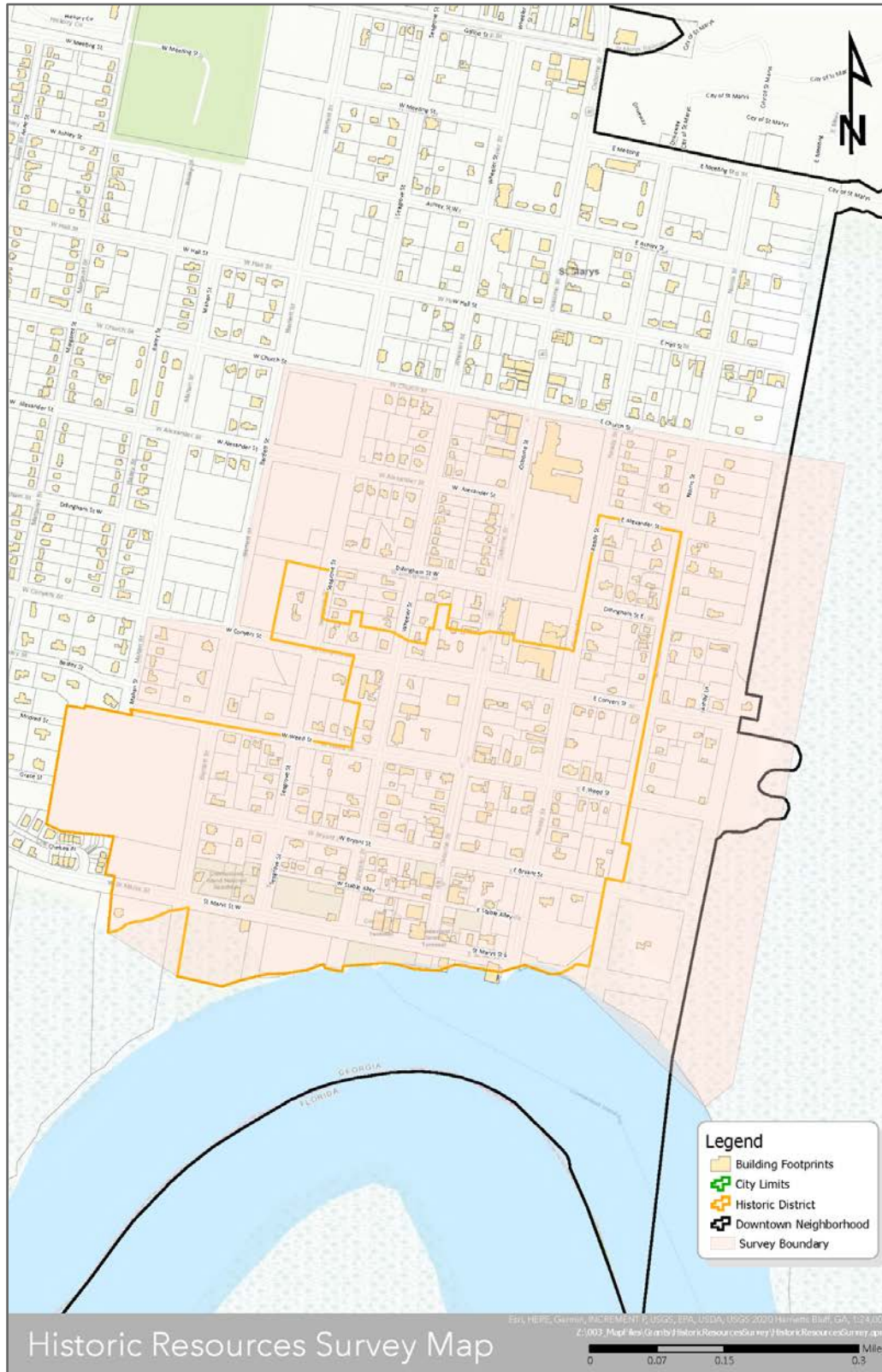


Figure 2. St. Marys Historic Survey Area and Local Historic District Boundary (City of St. Marys 2021).

Project Description

The St. Marys Historic Resources Survey was conducted as part of a preservation planning initiative sponsored by the City of St. Marys, and administered by the Community Development Department. The survey identifies all historic buildings, structures, sites and a cemetery within the St. Marys survey boundary (Figure 2). It also updates previous historic resource surveys of the historic district conducted by Eloise Bailey and Bruce Powell for the City of St. Marys (1985) and Piedmont Preservation (2001). While there is reference to the 1975 historic resource survey in the 1985 survey methodology and 2001 appendix, a copy of this survey was not uncovered. It is most likely embedded within the St. Marys Historic District National Register Nomination undertaken this same year, 1975.

This survey, which forms the basis for future preservation planning, was funded through a Certified Local Government (CLG) Survey and Planning Grant from the Historic Preservation Division of the Georgia Department of Community Affairs and matched in part by the City of St. Marys. All components of the survey were conducted jointly by Sarah Ward of Ward Architecture and Preservation and Robert A. Ciucevich of Quatrefoil Consulting, in consultation with Kenneth Hughes – Community Development Director for the City of St. Marys.

This historic resource survey of the St. Marys Historic District and immediate surroundings in downtown St. Marys, Georgia was performed to identify all structures 40 years of age or older within the project area (Figure 2). Field work was conducted from October 2021 through March 2022 and began at the southwest corner of the survey area and moved east and north. The survey area is roughly bound by the St. Marys River to the south, marsh lands to the east, Church Street to the north, and the Oak Grove Cemetery and Bartlett Street to the west (Figure 2). This includes the St. Marys NRHP Historic District, the local historic district, and lands immediately adjacent to the north, east and west.

Initially, field work identified approximately 236 resources within the survey area. Background research, including a review of prior surveys and the National Register of Historic Places (NRHP) revealed that the district was surveyed in 1975, 1984, and 2001. The St. Marys Historic District was officially listed in the NRHP in 1976. This district is also a locally designated historic district by the City of St. Marys. (Figure 3; Appendix 1: Index; Appendix 2: Survey Map).

An architectural field survey was performed from October 2021 through March 2022. The in-depth survey evaluated all structures constructed during or before 1982. This resulted in 229 resources (222 buildings, one structure, two park/landscapes, three objects, and one cemetery) updated or newly recorded into the Georgia Natural, Archaeological, and Historic Resource Geographic Information System (GNAHRGIS) database.



Figure 3. St. Marys Local Historic District Map (City of St. Marys 2022).

Eighty-five (85) historic properties within the current survey boundary were identified in the 2001 survey and constructed within the period of significance (1750-1924). Eighty-one (81) were extant at the time of this survey, four (4) were demolished. These 81 resources included 51 buildings surveyed in 1985 and 17 of those surveyed in 1975. The Oak Grove Cemetery was surveyed in 1985 but not in the 2001 or 1975 survey. All were updated in GNAHRGIS as part of this effort and those demolished were marked as such. An additional 149 historic resources, constructed from 1800 through 1982, were newly recorded in GNAHRGIS as part of this effort and no record of prior survey was found. Of the 229 updated and newly recorded resources, 119 were located within the existing NRHP boundary and 110 were in the area adjacent to the historic district within the survey boundary (Appendix 2: Survey Map).

Summary of Previous Preservation Projects

Preservation efforts in St. Marys are an on-going pursuit driven by residents, historians, planners, and historic preservation advocates. St. Marys is one of the oldest communities in the state of Georgia and as a result, preservation efforts began early. One of the earliest efforts was organized around the preservation of the Oak Grove Cemetery which makes up the western boundary of the survey area and historic district. While the City of St. Marys has always maintained ownership of the Oak Grove Cemetery, several non-profit organizations were formed to care and maintain the cemetery overtime. In 1963, the Oak Grove Cemetery Association incorporated with the purpose of selling and maintaining lots. African American burials were inventoried and cataloged by Mary Jane Stevens in her 1976 publication Camden's Challenge. Survey and documentation of the tombstones was undertaken in 1982 and 1999. In 2010, the city voted to stop selling lots as it was believed that there were potentially thousands of unmarked graves and new burials could damage the historic site. Efforts began to identify unmarked burials and repair existing tombstones at this time and are ongoing. (Westberry 2013, 10).

Orange Hall, located at 311 Osborne Street, is a large raised Greek Revival style home constructed between 1846 and 1853. It was listed in the National Register of Historic Places (NRHP) in 1973 (NRHP #73000613; Figure 4). This designation inspired a historic building survey of the entire downtown extending from the St. Marys River north to Church Street in 1975. The survey is referenced in a later report (1985 survey) but a copy was not found during the course of this project. The survey was likely used to prepare a historic district nomination to the NRHP and embedded into that effort. According to the later report, the 1975 survey identified 45 historic buildings within the district. As a result of these efforts, the St. Marys Historic District was officially listed in the NRHP on May 13, 1976. (NRHP #76000609; Bailey 1985).

In an effort to protect the historic district from demolition, inappropriate alterations, and new construction, in 1984 the City of St. Marys adopted a historic preservation ordinance under the 1981 Georgia Historic Preservation Act. The ordinance established a Historic Preservation Commission (HPC). This commission created a local historic district with boundaries similar to the NRHP historic district but was more aligned with individual property lines containing historic buildings (Figure 3).

As a result the City of St. Marys was then designated as a Certified Local Government (CLG). One of the requirements of CLGs is to maintain an inventory of their historic resources and perform on-going survey work to identify new resources. A Historic Building Survey was undertaken by Camden County historians Eloise Bailey and Bruce Powell for the City of St. Marys from 1984 through 1985. This work documented buildings that were 50 years of age or older, sited in their original location and retained historic integrity as viewed from the public right-of-way. The survey identified 67 historic buildings that met these criteria.

Following the survey in 1986, a Design Guidelines Study for the Historic District of St. Marys was performed by Gayland and Associates & PDM, Inc. This study developed guidelines for the local historic district to assist the preservation commission, planners, and property owners with appropriate changes and new construction within the district. Certificate of Appropriateness is required for any changes to existing properties and new construction within the historic district boundaries to be reviewed at a public meeting.

In 2001, Piedmont Preservation performed another historic resource survey for the City of St. Marys, updating the 1984 survey. This effort documented 139 historic resources within the downtown area that were 50 years of age or older and still retained integrity. This survey extended north of the local and NRHP historic districts documenting buildings constructed before 1935.

The Historic Preservation Division launched its online database now referred to as the Georgia Natural and Historic Resource Geographic Information System (GNAHRGIS) interface around this time. Data from the 2001 historic resource survey by Piedmont was entered into the database. Points referencing buildings and GNAHRGIS Identification numbers were created. However, due to the limitations of the program at the time, the points were not accurately placed and the GNAHRGIS ID numbers were not included in the written report. The former numbering system identified the County, City and Resource Number and this format was used in the 2001 report. Georgia Historic Resource Survey paper forms were generated and uploaded to the GNAHRGIS database.

These prior efforts were cross referenced and tabulated with this survey to ensure that all previously recorded resources were updated and eliminate redundancies in the GNAHRGIS database. The results are tabulated and included in Appendix 1.

Additional efforts by the planning staff for the City of St. Marys have ensured that they are meeting the requirements of the CLG program. From 2017-2018, they re-evaluated all historic structures within the historic district for classification purposes looking at the current exterior integrity and existence of buildings at that time and using the 2001 and 1984 surveys. They also determined that the historic district should be re-surveyed every 15 years to maintain an accurate inventory.

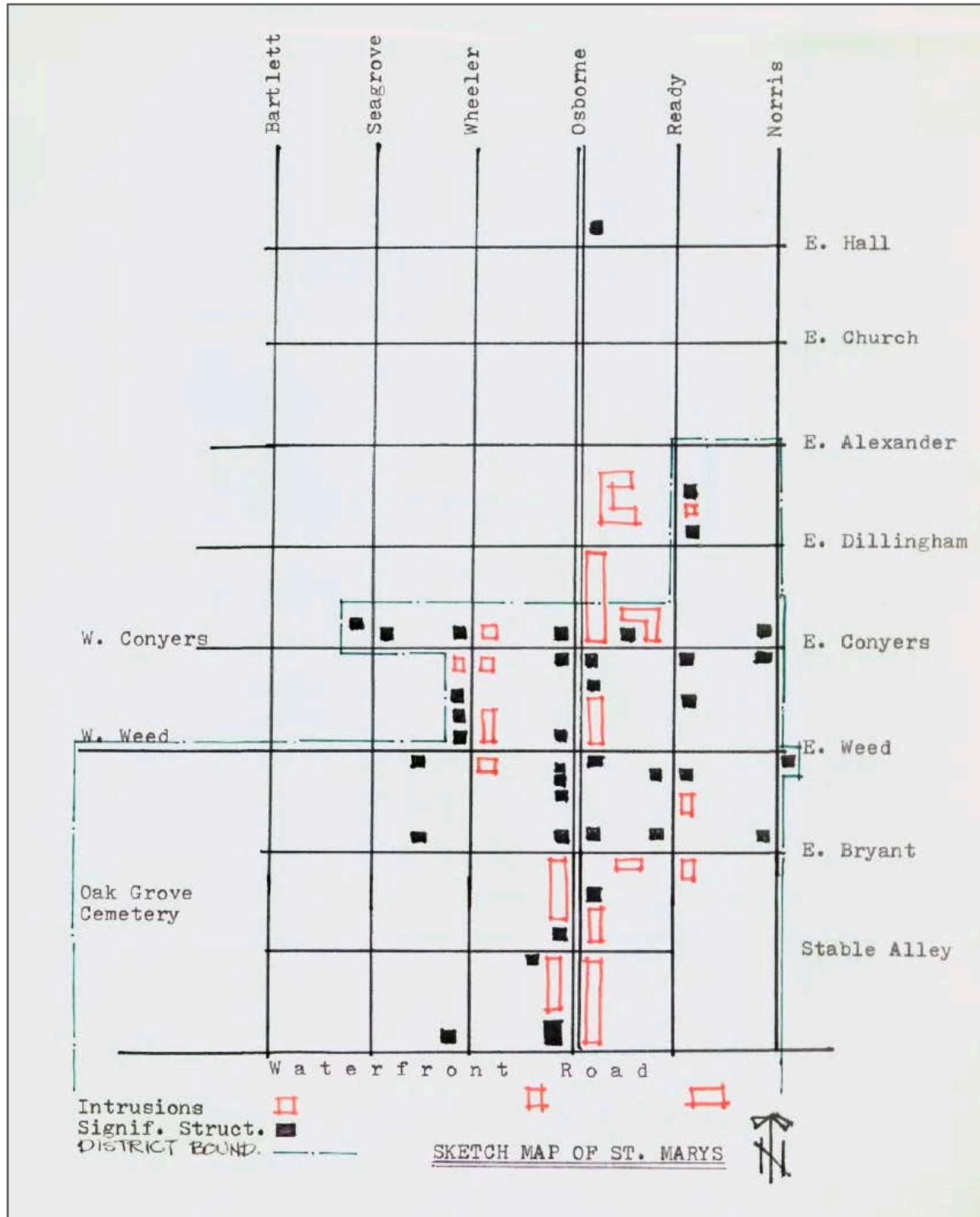


Figure 4. St. Marys National Register of Historic Places Building Map, 1975.

Developmental History

Located along the St. Marys River and nine miles from the Atlantic Ocean, the City of St. Marys developed as a port town on the eastern edge of Georgia. The St. Marys community and river are at the southeastern corner of the state just north of Florida. This area was explored by both Spanish and French missionaries hoping to spread Christianity to natives in the region (Camden County 1972; Bailey 1974, 2; Thompson 1999, 7).

Early claims purport that the French explorer Jean Ribault, who sailed from Jaure de Grace, France in 1562, was responsible for the first settlement at St. Mary's [sic], which today is located on a river that bears the same name and constitutes the official board between Georgia and Florida. Ribault, in the course of his explorations, abandoned the Indian name for the river, Thalthlothlaguphka, meaning "rotten fish", and called it the Seine; sailing the Georgia coast for years, the adventurous Frenchman went on to discover the Satilla, Altamaha, Ogeechee, and Savannah Rivers. According to local tradition, the present name of the river and town, St. Marys, is derived from that of a Spanish mission which was located nearby, in 1566. (NRHP 1985, 8:1).

Eventually, the Spanish claimed lands to the south in Florida and the British claimed lands in the north including Savannah. The area in between served as neutral ground as hostilities arose between the two governing countries. In 1763, the Spanish ceded lands in Florida to the British and the Georgia colony was extended southward to the St. Marys River, forming the natural border between the two. Land grants from the British government were issued to settlers to help populate the area (Camden County 1972; Thompson 1999:7). In 1769, the Governor's Council ordered a plan to develop the land at Buttermilk Bluff for public use (Westberry 2013, 8).

This area was then divided into parishes by the Royal government, the two southernmost being St. Thomas and St. Marys parishes. These two parishes were combined under the State Constitution of 1777 to form Camden, one of the eight original counties of Georgia. The county was named for Charles Pratt, Earl of Camden, who had expressed sympathy for the cause of the colonists in their fight for independence (Camden County 1972, 3).

Georgia adopted a state constitution on February 5, 1777 and created eight counties to replace the former parishes (Reddick 1994, 3; Barefoot 2001, 3). Camden County was one of the original eight which comprised the southeastern border of Georgia. After becoming a state, Georgia issued land grants similar to the earlier British grants which were no longer valid. Jacob Weed was issued a land grant from the state for 1620 acres on Buttermilk Bluff along the north side of the St. Marys River (Thompson 1999, 7). As colonial cities along the coast began to thrive, this area became a primary stop between Savannah to the north and Florida ports to the south, mostly Fernandina and later Jacksonville (NRHP 1985,

8:1). As a result, a Customs Office was established in 1785 to collect duty on goods transported through the port (Reddick 1994, 108).

On November 20, 1787, Jacob Weed, who lived on Cumberland Island at the time, entered into an agreement with 19 other men to own, manage, and distribute the land along the bluff, each man contributing 38 dollars each. He retained ownership as well, being part of the group of twenty. This group included: Issac Wheeler, William Norris, Nathaniel Ashley, William Ashley, Lodowick Ashley, James Seagrove, James Finely, John Fleming, Robert Seagrove, Henry Osborne, Thomas Norris, Jacob Weed, John Alexander, Langley Bryant, Johnathan Bartlett, Stephen Conyers, William Ready, Prentis Gallup, Simeon Dillingham and Richard Cole. These men were known as the “town proprietors” and served to organize and govern the community named for the river, St. Marys. They formed the “Articles of Agreement” which set up the rules for subdividing the land and required improvements. It is recorded in Camden County Deed Book A, pages 184 through 187 (Camden County 1972; NRHP 1985, 8:1; Bailey 1974, 2; Thompson 1999, 7; Christian 1990, 2; Reddick 1994, 105-6).

Their purchase included “four squares of four acres each” which formed the beginnings of the town of St. Marys (Camden County 1972). The area was surveyed and laid out in August 1788 by James Finely the county surveyor. “As laid out by James Finley, the town had 90 lots. Each lot was 4 acres square. Lots 89 and 90 were Public Lots and were 16 acres square. The streets as laid out by Mr. Finley were 100 feet wide. The town and commons contained 2,041 acres” (Christian 1990, 1; Figure 5). Of the four lots issued to each of the founders, there were instructions in the “Articles of Agreement” that required two of the lots be subdivided into one-acre parcels and sold for no more than “five pounds sterling” (Christian 1990, 2). The grantee of the land was required to build improvements and are described in the agreement,

“The party so purchasing shall be obliged to build a framed, log or brick house covered with shingles within six months from the time of purchase, the dimensions of which [sic] house shall be not less than sixteen by twenty four feet, otherwise to forfeit the purchase money and to be no longer considered as a proprietor in the said town nor shall he receive a title to his said lot until this article is complied with” (Christian 1990, 2).

The plan was officially recorded on January 5, 1789 and at this time, the town featured a grid pattern in addition to what would become Oak Grove Cemetery on the west side of the town (GNAHRGIS #280642; NRHP 1985, 8:1; Camden County 1972). The cemetery was established on the former Pagan Creek Plantation owned at the time by Charles and Jermyn Wright. Pagan Creek itself formed the western edge of the city. The cemetery comprised eight acres west of the town and the first grave was recorded in 1801. (Westberry 2013, 8).

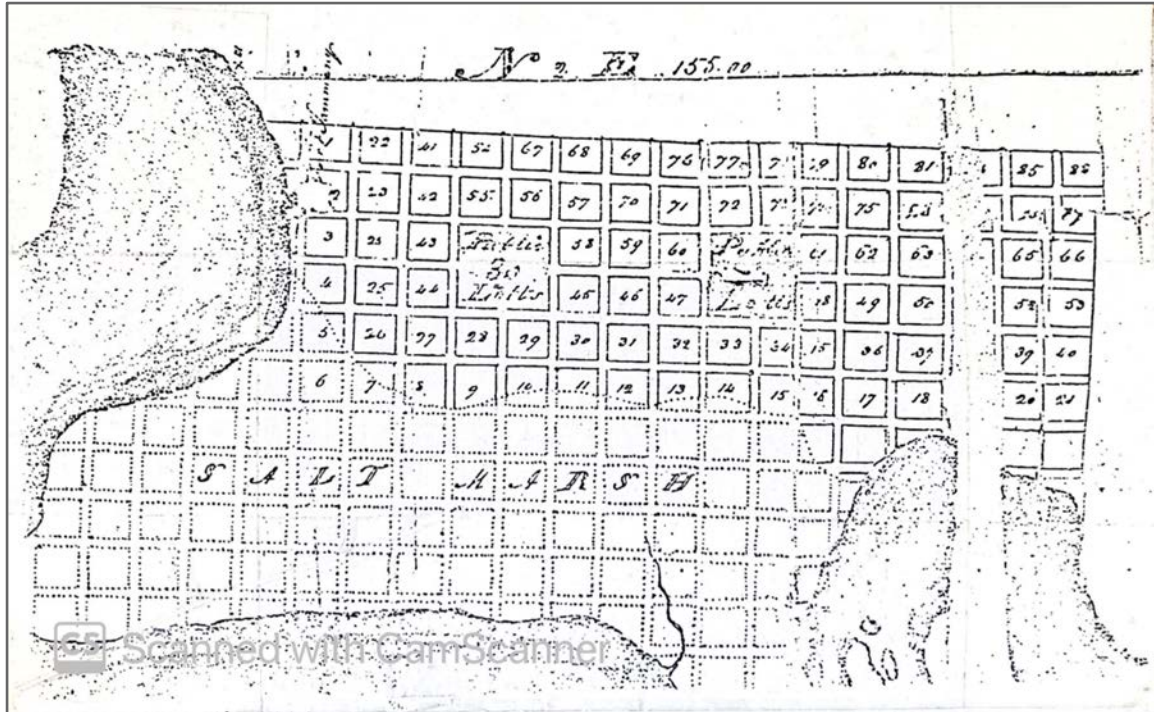


Figure 5. Town plan laid out by James Finley, county surveyor, in August 1788 (Christian 1990, 1).

Settlers to the town came from nearby locations in Georgia, South Carolina, New England and Arcadia (Bailey 1974, 2). By 1789, the first road connected St. Marys to neighboring communities. It was located on the west side of town in lands now occupied by the Oak Grove Cemetery. Domestic water was obtained originally from natural springs and later wells and pumps were installed in the springs to retrieve water. St. Marys opened a school which was the only one in the county. This attracted families from surrounding plantations who maintained homes in town so they could provide an education for their children and maintain social relationships (Westberry 2013, 8). Even those who did not reside in the town, brought their goods and products to the growing port to export and trade. Goods included “lumber, cotton, hides and furs, rice, dried meats, honey and beeswax... Here these products were exchanged for necessities such as salt, sugar, coffee, gunpowder, and shot imported from the West Indies and other places” (Reddick 1994, 109).

In an effort to incorporate the town, the state required a new survey which was performed by James Parker in 1792. Lots extended northward from the river in a grid pattern very similar to what exists today. Streets were named for the town proprietors (Arnow 1952, Ch 49; NRHP 1985, 8:1). While St. Marys Street, parallel to the river, served as the primary east-west corridor adjacent to the water, Osborne Street served as the main north-south route with a median and many of the town’s most important structures and services (Figure 6). Osborne Street was named for Henry Osborne, a well-known circuit court judge in the State of Georgia and town proprietor (NRHP 1985, 7:1).

St. Marys is the oldest settlement within Camden County, officially established by the state legislature on December 5, 1792. The nearby town of St. Patrick, situated on the Satilla River and near the site of Jefferson, was selected as the first county seat in 1787. St. Marys served as the second county seat from 1792 through 1800. At the turn of the 18th century, the state required county buildings to be placed near the center of the county, so Camden County established a new town called Jefferson which became the third seat (Arnow 1952, Ch 49; Camden County 1972, 4; NRHP 1985, 8:1; Reddick 1994, 4-5; Reddick 1994, 106).



Figure 6. Osborne Street, looking North c1890 (Bailey 1974, 6).

Early on, the town included a fort, marsh, and a cemetery. Medians were installed along north-south residential corridors including Wheeler, Osborne, and Ready Streets, reinforcing the design of the original town plan. (NRHP 1985, 7:1).

A post office was established in St. Marys in late September 1794. John Burrows was appointed as the first postmaster. At this time, this area was sparsely populated and the post office was the only one for many surrounding settlements including the towns of St. Augustine and Fernandina in Florida. Citizens traveled on horseback or by boat/canoe/ferry to the St. Marys post office. Eventually, in the first half of the 19th century, these cities received their own post office and a steamer would transport mail along the coast. (Arnow 1952, Ch 49; Reddick 1994, 108).

Shipyards were present in St. Marys as early as 1798. Colonel John Patterson, a master ship-builder from Philadelphia owned and operated a yard that allowed for the construction of very large ships that could transport goods internationally. Others focused on smaller vessels and Zeb Rudolph became known for his fast racing canoes built out of cypress logs

and finished with mahogany and copper. The *Hildegarde* was one of the best known ships carrying goods and travelers to nearby locations in Cumberland Island, Brunswick, and Fernandina. Several others focused on passenger ships and boats as this was the primary means of transportation for many in St. Marys (Reddick 1994, 110-111).

St. Marys had roots in missionary work and this continued through the Anglo settlement as well. George Clark was a Methodist minister who traveled between Glynn and Camden Counties to preach and introduced the concept of public worship to many new settlers in what was still a very rural area (Thompson 1999, 7-8). In 1800, the Bishop appointed John Garvin as rector at St. Marys as well as to other communities in that circuit, including Savannah. They worshiped together in homes and on lawns without a building. Members included black and white families (Thompson 1999, 9).

The town grew as the only port south of Savannah in Georgia. By this time domestic water was obtained from pumps and brick lined wells within natural springs. The wells were located in the middle of the streets and the pumps were wooden. The Washington Pump remains as an artifact of this colonial era technology (GNAHRGIS #281603; Reddick 1994, 117). By 1801, the town had a population of 190 white residents, 73 slaves, and five (5) free people. This growth was directly relative to its success as a seaport connecting Savannah to ports in Florida. Shipping of raw goods, materials, and lumber from St. Marys was a principal industry as surrounding communities also continued to grow (Camden County 1972; Reddick 1994, 110). The Jackson-Clark-McDonnell House at 314 Osborne Street stands as a testament to this period of prosperity. It was completed in the early 1800s for Archibald Clarke, who is described as “a prosperous lumber mill operator, lawyer and custom’s collector; one of the county’s leading citizens” (GNAHRGIS #12628; Camden County 1972).

While the state legislature had established the town of St. Marys in 1792, it was not until 1802 that the City of St. Marys was officially incorporated (Reddick 1994, 106; NRHP 1985, 8:1). One of the earliest structures was Union Church constructed in 1804 as a non-denominational establishment built to serve everyone except the Methodists (100 W. Conyers Street and GNAHRGIS # 12636; Figure 7; Thompson 1999, 9; NRHP 1985, 8:1).

The Census of 1810 identified St. Marys as the fifth largest city in the State of Georgia with a population of 585 (Thompson 1999, 9). By 1811, a visitor noted that there were 50 or 60 wooden houses near the St. Marys River. They were utilitarian in design and form. He also noted that pine and lumber were of great value and were being replanted instead of crops and food (Bailey 1974, 2; Reddick 1994, 112).



Figure 7. 1800s image of Union Church later the Presbyterian Church (GNAHRGIS #12636; Bailey 1974, 20).

The following year, St. Marys was occupied by the British who sought to collect funds during the War of 1812. They were met with fierce resistance as Archibald Clarke, the customs collector, refused to hand over the funds. As a major port of entry on the Georgia coast, a Customs Office was established as early as 1785 to collect duty on goods, with Henry Osborne appointed as the first customs collector (Figure 8). Archibald Clarke was appointed by President Thomas Jefferson in 1807, and fought to preserve this responsibility when the British tried to overtake the funds. Many citizens fled the community. Those that remained protected their lands and sawmills from barges in the water routes outside of town which ultimately protected the whole community. (Reddick 1994, 108; Bailey 1974, 3) While the war ended in 1815, British soldiers in the area were not convinced and established a camp on Cumberland Island nearby and continued to wage attacks on St. Marys, occupying the town for a short time (Thompson 1999, 18; Reddick 1994, 22 and 112).

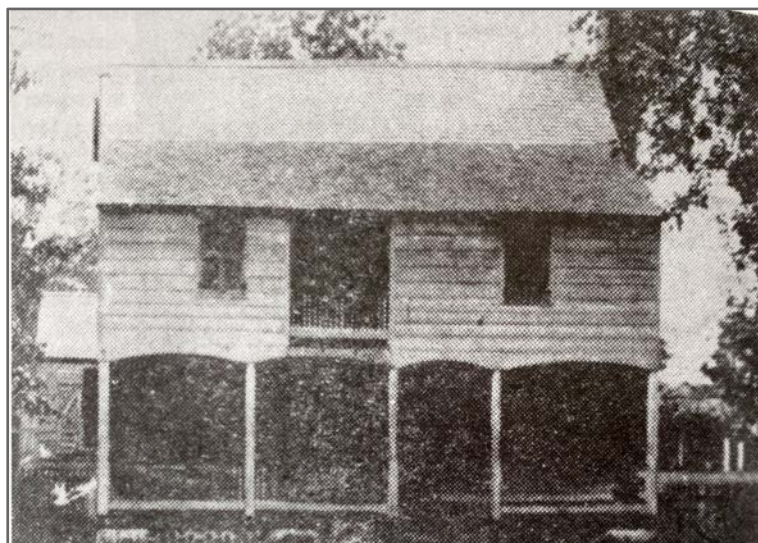


Figure 8. The Customs House located near Sterling's Grocery Store fronting Weed Street, no date (Reddick 1994, 110).

As the town grew, the single non-denominational church was unable to serve all the residents. The Methodist congregation set out to construct a church building. In 1812, the City granted them ownership of a 200x200 foot lot in Public Square 89 on which to build. At the time, Methodist doctrine required that “all our churches be built plain and decent, but with no more expense than is absolutely unavoidable (Thompson 1999, 9). It was a simple wood structure and a bell was installed in 1838. A description from the 1840s made the following observations of the church describing it as “a plain wooden building and quite in keeping with their ideas of that time, though it enjoyed the luxury of a bell, which few churches of that denomination have...The pews were plain wooden benches with slatted backs. The entrance was by two doors at the south end. The one on the right was for females and the other was for males, as the opposite sexes were not allowed to sit together, so the young man and his best girl going to church parted company there until the service was over...” (Thompson 1999, 9).

In 1821, the Union Church became a Presbyterian Church (Figure 9). Horace Pratt was the first minister and is also credited with building one of the most significant homes in St. Marys known as Orange Hall (NRHP #73000613 and GNAHRGIS #12618; Camden County 1972). Designed as a raised Greek Revival style home on a large piece of land in the center of town, its construction date is uncertain but it is most likely a later home built in the 1830s on lands that Pratt previously owned (NRHP #73000613; Figure 10).

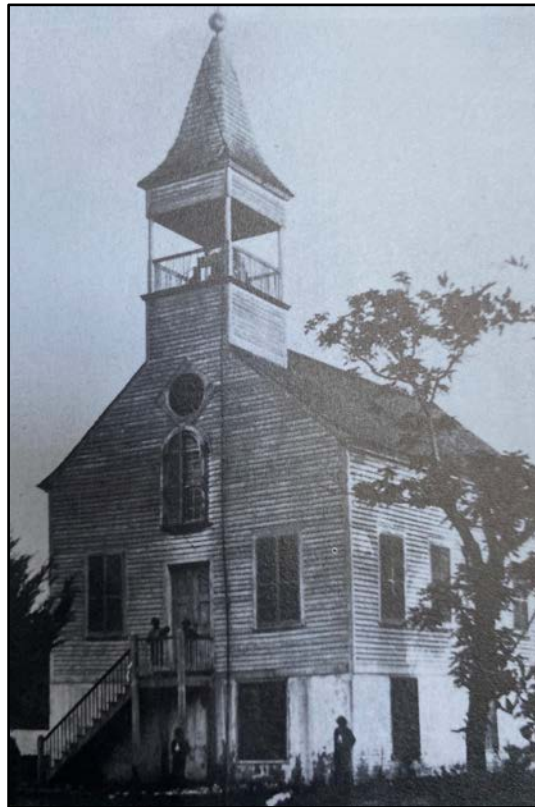


Figure 9. First Presbyterian Church (GNAHRGIS #12636), no date (Barefoot 2001, 123).

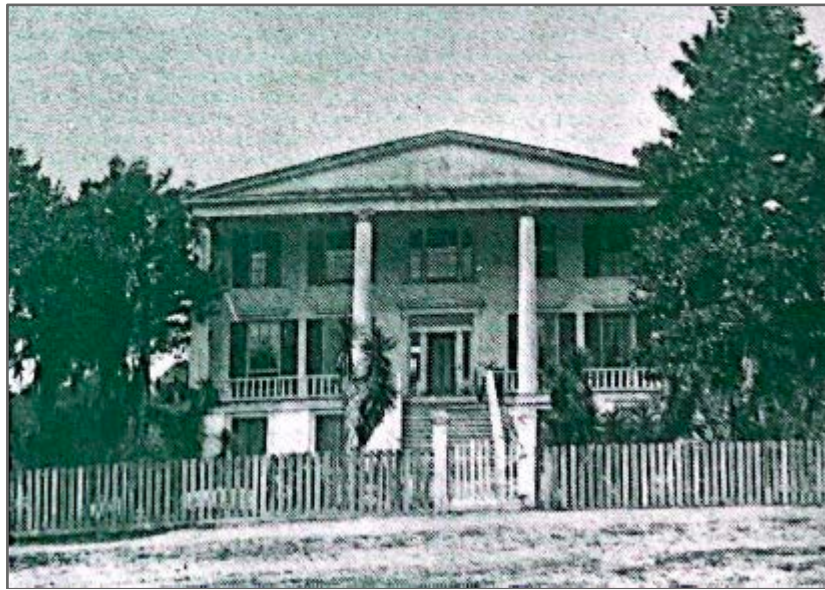


Figure 10. Orange Hall (GNAHRGIS #12618), no date (Bailey 1974, 27).

By 1837, the population of St. Marys had grown to 1,000 according to a newspaper report (Bailey 1974, 3). The Methodist Church had grown to include 39 white members and 35 black members and were now worshipping in the Methodist Episcopal Church (Thompson 1999, 9) A visitor described the town as “one of the most pleasant and healthy seaports in the Southern States... The town at present contains near 1,000 inhabitants who are distinguished for their industry and hospitality. At no seaport south of Charleston can all kinds of merchandise be bought as cheap as at this place... The town has two commodious churches viz: Presbyterian and Methodist and a flourishing Academy. The market is well supplied with fish, meats and vegetables. The finest oysters in the world can be obtained here in abundance...” (Reddick 1994, 113).

About ten years later in 1848, the State of Georgia reported that “St. Marys had five churches, a courthouse, a markethouse, nine dry goods and grocery stores, three schools, three ministers, three lawyers, and three physicians. The inhabitants had a high reputation for morals and intelligence. Lumbering, sawmills and shipbuilding all added to the economy of the town. The permanent population was increased by the northern tourists, as well as the county planters who had summer homes nearby” (Camden County 1972). The five churches described above included the Episcopal Church, Catholic Church, Presbyterian Church, Methodist Chapel, and African Church (Bailey 1974, 3).

By the 1850s, the population was 627; 359 white residents, and 268 black residents (Bailey 1974, 3; Thompson 1999, 18). During this period, the town of St. Marys featured a courthouse, market, large brick “academy”, nine dry goods stores, a drug store, and three schools. (Thompson 1999, 18). Being on the coast and involved in much trade, the community had battled with mosquitos and illness throughout its history however the Yellow Fever epidemic in 1854 was particularly harsh with entire families passing away.

A public health office was appointed by the city of St. Marys to help provide guidance for quarantines in attempts to help control this epidemic which presented itself many times (Reddick 1994, 111).

Growth in the mid-1850s led to the construction of a new chapel for the Methodist congregation in 1858. The earlier Methodist church building was in a deteriorated condition and was given to the black members of the congregation as the white members sought to erect a new building at 105 E. Conyers Street (GNAHRGIS #12629; Figure 11; Thompson 1999, 10 and 18). The older black church was moved and eventually landed at Dillingham and Osborne Streets (now the site of the school grounds). It was destroyed by a storm in 1949 and the congregation uses the Greater Trinity sanctuary at Osborne and Ashley Streets, north of the survey area. The new chapel was completed in 1858 by carpenters S.L. Burns and John Peal. (Thompson 1999, 10 and 23).



Figure 11. New Methodist Chapel constructed in 1858. Photo from 1972 (Thompson 1999, 21).

Being a port town in the deep south, St. Marys was greatly affected by the Civil War. The city was isolated from larger towns and with a collective focus on the lumber and fishing industries, they were unprotected by military forces present elsewhere in the south. Reports noted a population between five and six hundred people with about half of that number being slaves (Thompson 1999, 24). Many citizens left the city seeking safer locations inland. Sixty of those who stayed formed a small militia to protect St. Marys known as the “Camden County Minute Men” (Reddick 1994, 115). Georgia voted to secede from the Union on January 19, 1861, Camden County representatives voting in favor of the secession. Attacks from Union forces were felt in 1862 and in November of that year, three

companies in gun boats landed at the bluff and the town of St. Marys was destroyed by the Union Army. Many residents had already fled and many never returned. (Bailey 1974, 3; Camden County 1972; Reddick 1994, 115)

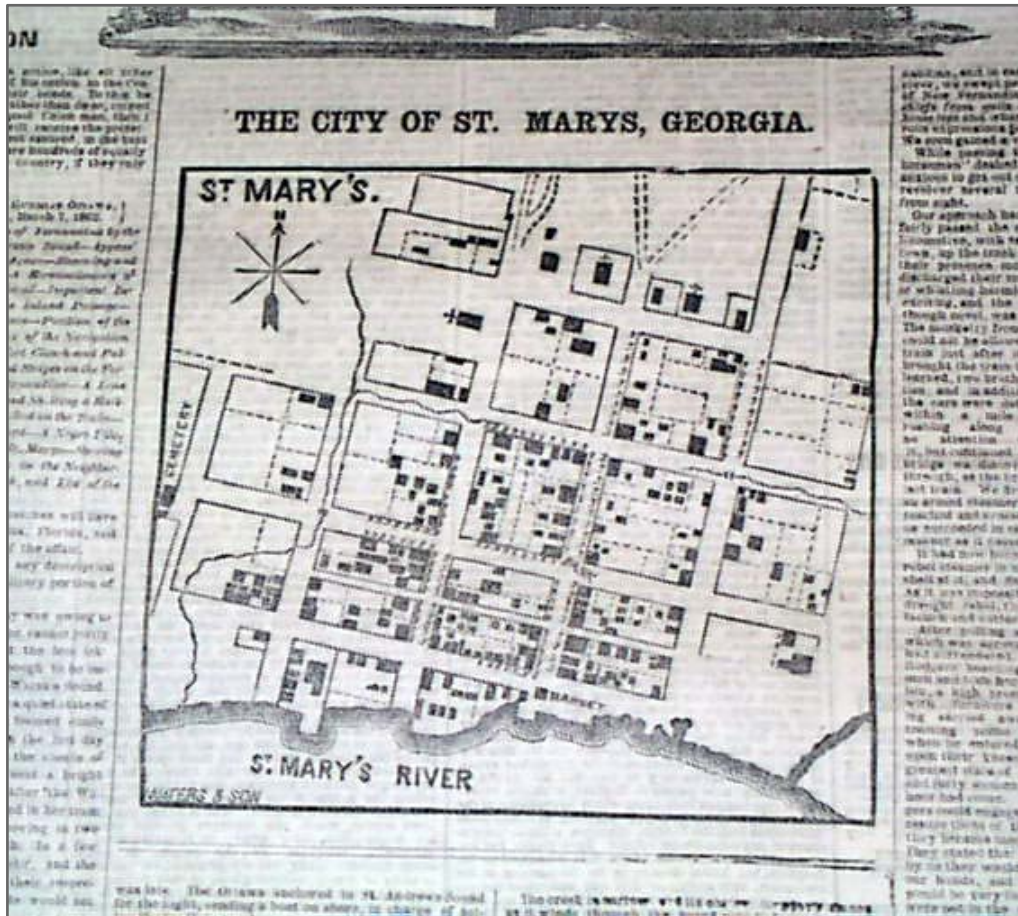


Figure 12. Map of the City of St. Marys, Georgia from 1862 publication in the New York Herald. Map shows development prior to the destruction from the Civil War (Waters & Son).

Following the war, reconstruction ensued and attempts to reestablish what had been lost were undertaken (Figure 12). It took several years to rebuild and it wasn't until 1867 that local governance was restored with the appointment of a mayor and city council. (Reddick 1994, 115). Civil unrest within the town led to the appointment of a Sheriff followed shortly by the creation of a police force, with nine black officers. The force was abolished within a year while the city relied on nearby federal troops and later citizens to patrol the town. Efforts to create separation between the white and black families within the cemetery ensued and on June 17, 1869 a fence was ordered by the City Council to surround the white burials in Oak Grove Cemetery (Westberry 2013, 8; Arnow 1952, Ch 45). In the months that followed, lands were set aside for African-Americans to establish churches within the city provided no cemeteries were to be installed. The "Negro Baptist" church was given lands fronting Wheeler within Public Square No. 89 and the "Negro Methodist" church on

block 89A (Westberry 2013, 8-9; Arnow 1952, Ch 45). Two years later, the fence in Oak Grove Cemetery was not yet installed and the city issued another order to install the fence to separate the whites and black. (Westberry 2013, 9).

The town's relationship to the water continued to be its strongest resource but with little industry surviving it was slow to rebuild. Fishing became an economic driver and the seafood industry thrived. A canning plant, ice plant, and later a pogy plant were erected to help support this industry (Camden County 1972). Samuel L. Burns & Company was the first sawmill to be established after the war, later it was named Fox & Burns. The yellow pine sawmill was on the St. Marys River on Block 2 and another facility on North River at Block 19 for holding the logs. They had steam ships to haul the logs to the mills and sail boats to transport the logs in the Atlantic Ocean (Arnow 1952, Ch 54; Reddick 1994, 116). Within ten years, the town had reestablished itself as a fishing port with a population of 750 (Bailey 1974, 3).

As communities were rebuilding, St. Marys lumber industry was able to provide much needed supplies helping to restore its economy. Yellow pine and live oak trees were harvested and sawmills were established along the St. Marys River (Thomas 1999, 28). City council began discussions about the railroad and in 1871, the City sold bonds to raise money for surveying instruments to be purchased to assist with the St. Marys & Western Railroad. The route likely entered the city from the north and was often referred to as Tyner's Road. It was never completed (Arnow 1952, Ch 45 and 47). This same year, the city adopted a Code of Ordinances using the codes recently adopted in Savannah, Georgia. A newspaper called "The Weekly Phoenix" was published and distributed in St. Marys. Camden County Academy provided an education to the white students in the community while a "negro school" is mentioned by the City Council. Both appear to be privately funded at the time (Arnow 1952, Ch 45). Birding increased in popularity to the extent that the City began requiring a license for "Bird Collectors" many of whom sought the painted bunting, a now a rare bird common in St. Marys (Arnow 1952, Ch 45).

From 1871 through 1923, St. Marys once again served as the county seat for Camden County (NRHP 1985, 8:1; Arnow 1952, Ch 45). At that time, most of the population of the county lived in or near St. Marys. City offices were converted into county buildings with new jobs and facilities increasing services in St. Marys (Reddick 1994, 6). In April 1877, the city voted on several initiatives aimed at growth and future development of St. Marys. They ordered a new market to be constructed at the intersection of St. Marys and Osborne Streets and they offered land, free of charge for ten years, to settlers who would "clear and plant or erect a factory" (Reddick 1994, 116; Arnow 1952, Ch 45). An artesian water system was installed to distribute domestic water throughout the city and many of the old wells within the street were abandoned (Reddick 1994, 117).

In 1882, land was set aside for the East Georgia & Florida Railroad Company. Established by Colonel C.P. Goodyear & Associates in Brunswick, the rail aspired to connect Glynn County to Florida through St. Marys. While construction stalled, council voted again in 1885 and 1887 to set the land aside for the rail. It was almost complete when Henry Plant,

owner of the Plant System of Railroad in Florida (predecessor to the Atlantic Coast Line Railroad) feared the competition and purchased all of the route and removed the bridges. The rail was never realized as a result. In 1888, Alexander Curtis, a local resident, offered to try again using the same lands and parameters that the city had offered to Goodyear to form the Waycross Air Line Railroad Company. Like the attempts before, this effort was never realized and St. Marys remained without a major inland railroad transportation route (Arnow 1952, Ch 45 and 47).

St. Marys was very slow to recover however and was described in the 1890s as “a dead town, with houses and fences tumbling down, with no evidence of the recent use of saw or hammer, with no industry of any kind...” (Thompson 1999, 28). A longstanding grocery store, originally owned by John Hernandez and purchased by Dave Sterling burned down. In 1896, the store was rebuilt across Osborne Street at the intersection of Weed Street (GNAHRGIS #12617; Barefoot 2001, 17). The prior design allowed for the store owner to live upstairs and operate the store on the first floor. The new design appeared to recreate this same use (Figure 13).



Figure 13. Sterling’s Grocery Store located at 219 Osborne Street, c1953 (GNAHRGIS #12617; Reddick 1994, 117).

The population of Camden County grew to 7,669 by 1900 with the largest areas of density in St. Marys (691) and Satilla Bluff (525) (Reddick 1994, 7; Figure 14). As the town grew, so did its need for burial sites and around 1900, six acres was acquired by the City and added to the St. Marys cemetery (later Oak Grove Cemetery) including lands owned by the

Bealey family who had hoped to subdivide the area for development. It was renamed the “Oak Grove Cemetery” in November 1911. This same year a concrete block wall was installed to further separate the white burials from the black burials as many whites were being buried in the black section. This was met with an equal response from the black community as residents formed a Cemetery Association and petitioned for a wall to be installed around the black section of the cemetery. Completed from 1913-1915, this wall was constructed by George W. Harris and his sons George, Tola, and Vincent. Harris was a well known mason and plasterer in Camden County (Westberry 2013, 9).

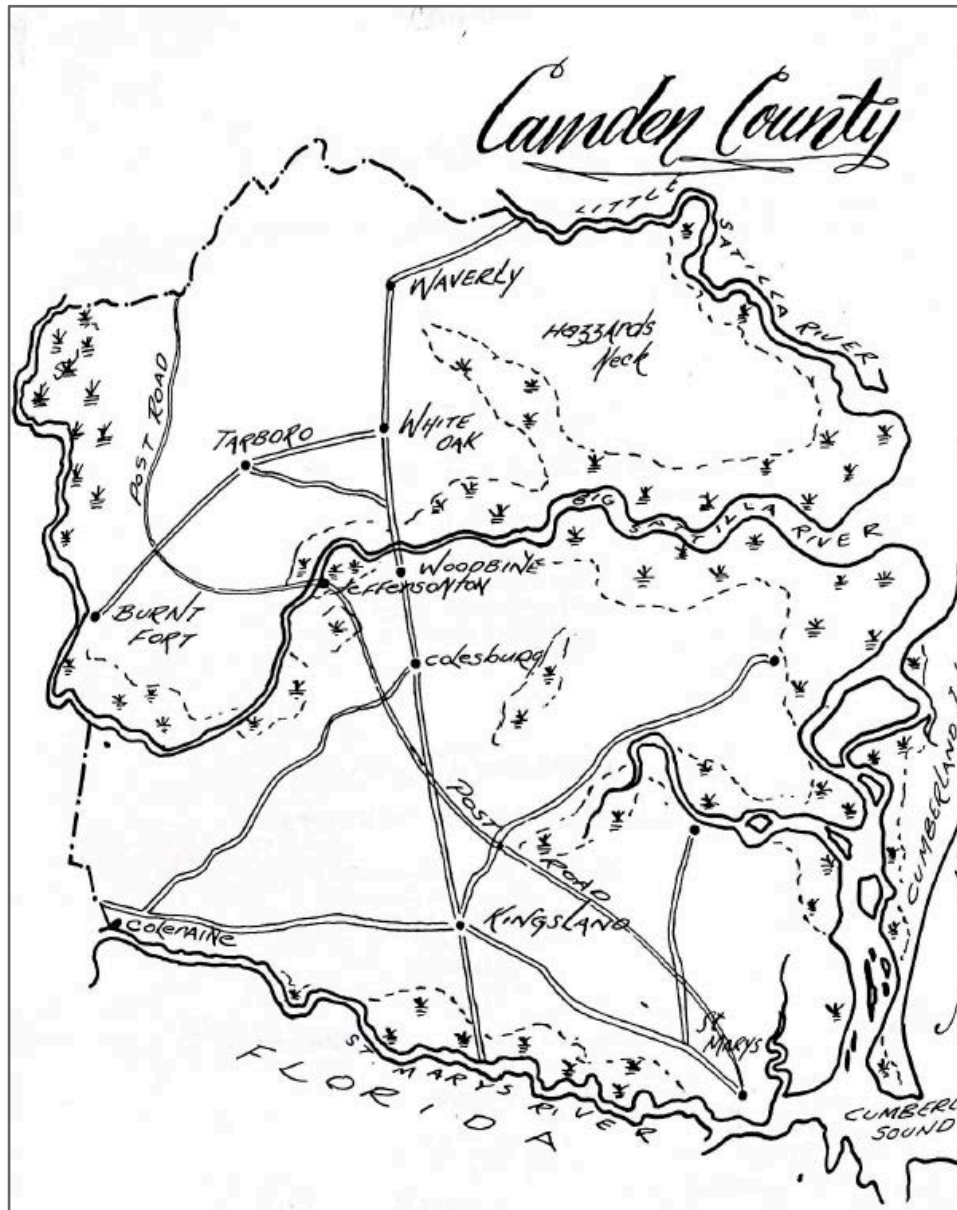


Figure 14. Camden County map showing major cities and communities by Jim Talley (Camden County 1972, 1; Reddick 1994).

A second public cemetery was installed north of the town on Bartlett Street between Meeting and Gallop Streets for paupers, criminals, or those who could not pay for a burial site. It was much smaller at 1.63 acres and was known as the “Pauper’s Cemetery” (Westberry 2013, 8-9). It is referenced as early as 1875 but was likely less formal and more of a swampy area. It was more commonly used starting in the 1920s (Westberry 2013, 9).

The railroad finally came to St. Marys at the turn of the 19th century. In one last attempt by promoters, J.E. Stark and Roland Woodward petitioned the city council in 1901 to use the same road bed from prior attempts to promote the Jacksonville, St. Marys & Jesup Railroad. After three years of waiting, city council, determined to acquire access to the railroad, reached out to the Seaboard Air Line Railroad to request a route from Kingsland to St. Marys. While this was also not successful, it inspired Captain Lemuel Johnson who had sponsored prior rail attempts to complete the project. The land request for the rail was approved in 1906 and in operation by 1908, reinforcing north-south transportation routes through St. Marys and leading to further development and commercial activity. On July 11, 1908, the first train traveled east-west along the St. Marys and Kingsland Railroad Company. (Arnow 1952, Ch 47; Camden County 1972; Bailey 1974, 4; Thompson 1999, 37).

In 1914, the railroad was incorporated into the Atlantic, Waycross & Northern Railroad Company and later the Seaboard Airline connecting Savannah to Jacksonville. Industry flourished as a result of the train and commercial trade focused on local goods including “lumber, fruit, vegetables and sea-island cotton.” (NRHP 1985, 8:1). Introduction of the rail allowed St. Marys to export shrimp, seafood and crops, expanding these industries and the local economy. New canneries and an ice house were constructed allowing for easy storage and transport of these goods to areas outside of the region due to the railroad. (Bailey 1974, 4; Thompson 1999, 37). J.S.N. Davis Jr. and George W. Brandon purchased Lemuel Johnson’s sawmill business and opened a canning plant near the Oak Grove Cemetery. The plant canned shrimp, sweet potatoes and string beans. John, Charlie, and Noble Hardee (brothers) maintained Georgia Cannery, Inc. on the North River where they canned prawn, shrimp and vegetables. (Reddick 1994, 118; Barefoot 2001, 25).

As the economic growth of St. Marys began to rely more on internal exportation of goods to nearby areas, its identity as an international port decreased (Figure 15). In 1913, the Customs Office was moved to Fernandina, Florida to the south. (Reddick 1994, 108). A major renovation of the Methodist Chapel (GNAHRGIS #12629) and 105 E. Conyers Street was undertaken in 1913. Improvements to add a stove, chimney, gas fixtures, and carpet were previously made. The early 20th century renovation included the front porch, installation of stained glass windows, a choir pulpit, a pressed tin ceiling, wood repairs and new carpet within the interior (Thompson 1999, 23).

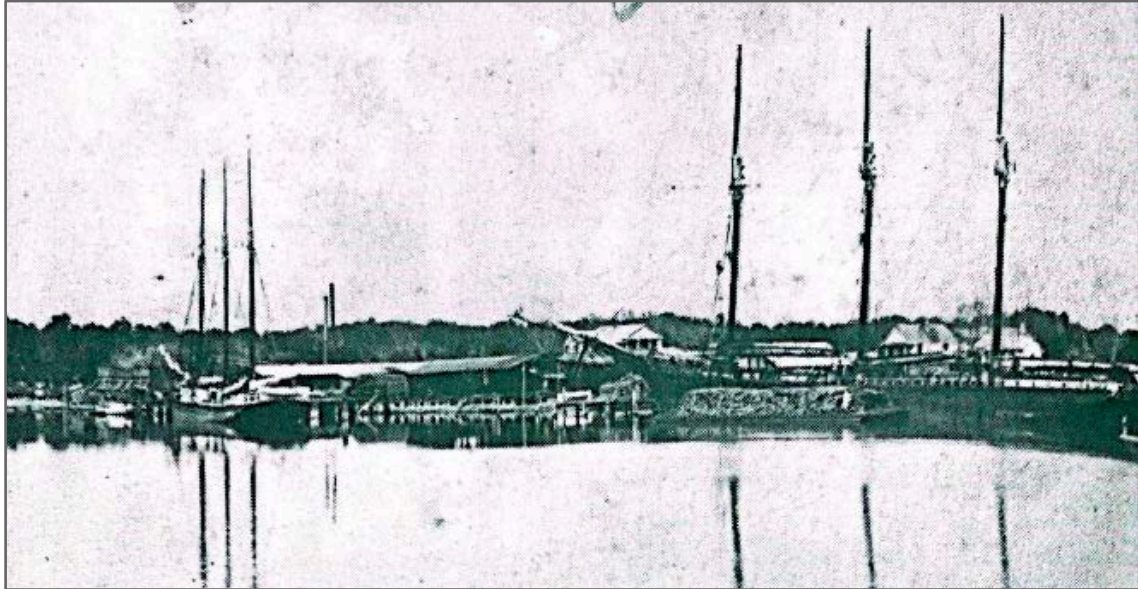


Figure 15. Sailing vessels along St. Marys waterfront c1900 (Bailey 1974, 12).

In 1915, innovative efforts to make paper from marsh grasses were developed and speculation about the potential for this industry in St. Marys grew. In anticipation, Burdett Loomis purchased large amounts of land to establish a paper plant along “North River” which comprises the east end of the river frontage in St. Marys. The paper mill and laboratory to experiment with the marsh grasses was in operation by the following year. Marsh grass proved to be an inferior resource for paper but the mill was able to produce wrapping paper and cardboard. Unfortunately, it did not prove successful. It became too expensive and labor intensive to harvest the marsh grasses and they ceased operations in 1918 (Bailey 1974, 4; Camden County 1972; Arnow 1952, Ch 44; Reddick 1994, 119).

Visitors from nearby and northern states were common. The town featured two hotels with restaurants and music (Figure 16). Boarding houses helped to provide rooms as hotels reached capacity during popular events (Bailey 1974, 4). The entertainment scene was still very tranquil with picnics, trips to nearby Cumberland Island, lawn tennis, walks and swimming in the river (Thompson 1999, 40). Lumber continued to be a valuable resource to St. Marys. Around 1915, a visitor described the scene with “a big sawmill buzzing at the waterfront... the riverside piled high with lumber and railroad ties and a four masted schooner receiving great logs into her hold from the rafts of them which lie upon the water” (Bailey 1974, 4).

The Riverview Hotel was completed in 1916 for Mrs. K.J. Wadley. She sought to meet the demands of the day by providing room and board in a nice facility right in the middle of town and across from the St. Marys River (Figure 17; GNAHRGIS #12578). Located at the intersection of St. Marys Street and Osborne Street, the hotel was to feature a main lobby, dining room, 20 guest rooms, and eight bathrooms. The two-story structure, constructed by J.H. Banks, featured a two-story gallery porch forming an arcade along the

street. Wadley's brother, George L. Johnson was the hotel manager. (Reddick 1994, 120; Barefoot 2001, 22).

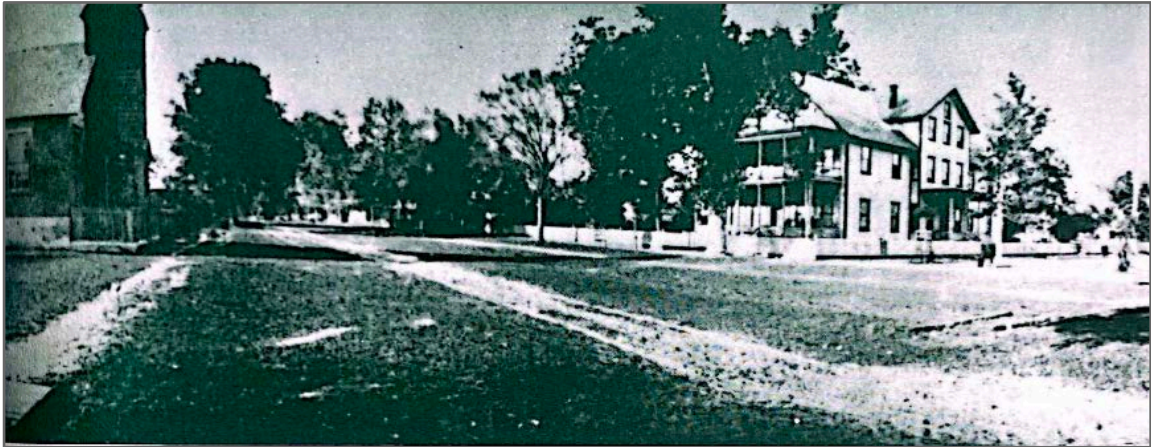


Figure 16. The Long Hotel on right (GNAHRGIS #12621, also known as the Spencer House) and the Catholic Church on left (GNAHRGIS #12610) on Osborne Street looking north, ca.1875.



Figure 17. Riverview Hotel (GNAHRGIS #12578) at 105 Osborne Street, looking northwest, ca. 1910 (Bailey 1974, 7).

In 1917, A. Douglas Strogahr who owned the Georgia Cannery, Inc. opened a poggy plant in St. Marys. The Southern Fertilizer and Chemical Company of Savannah proved to be a successful industry for the area in which menhaden fish, imported from all over, were processed into oil and shipped via rail to Proctor and Gamble for the manufacture of soap;

fish scraps were shipped to the Savannah plant and used to make fertilizer. (Reddick 1994, 118; Bailey 1974, 4; Thompson 1999, 37).

A new pavilion was completed along the waterfront in 1918. Located at the end of Osborne Street, it featured a swimming pool to the side and the public space was used for dances, gatherings, and concerts. (Reddick 1994, 121; Barefoot 2001, 26).

The automobile was introduced in the late 19th century; however it was not widely available until the early 1900s. During this period of transition, train cars, trolleys and streetcars were active to provide in-town transportation to citizens. In St. Marys, the Toonerville Trolley was the primary vehicle for transporting citizens to and from nearby Kingsland, Georgia. It also served to carry the mail. Constructed in 1920 by Phil Hopper, the trolley was placed upon a Model-T truck which served as its foundation (Figure 18). It continued to operate through the 1930s and was eventually replaced by the “Doodlebug” which operated in the 1940s and 1950s. (Bailey 1974, 8). The trolley was so famous that it was featured in a national comic strip, Wash Tubbs in 1935, along with several other landmark buildings including Orange Hall, Sterling’s Grocery and the Riverview Hotel (Figure 19; Bailey 1974, 23).

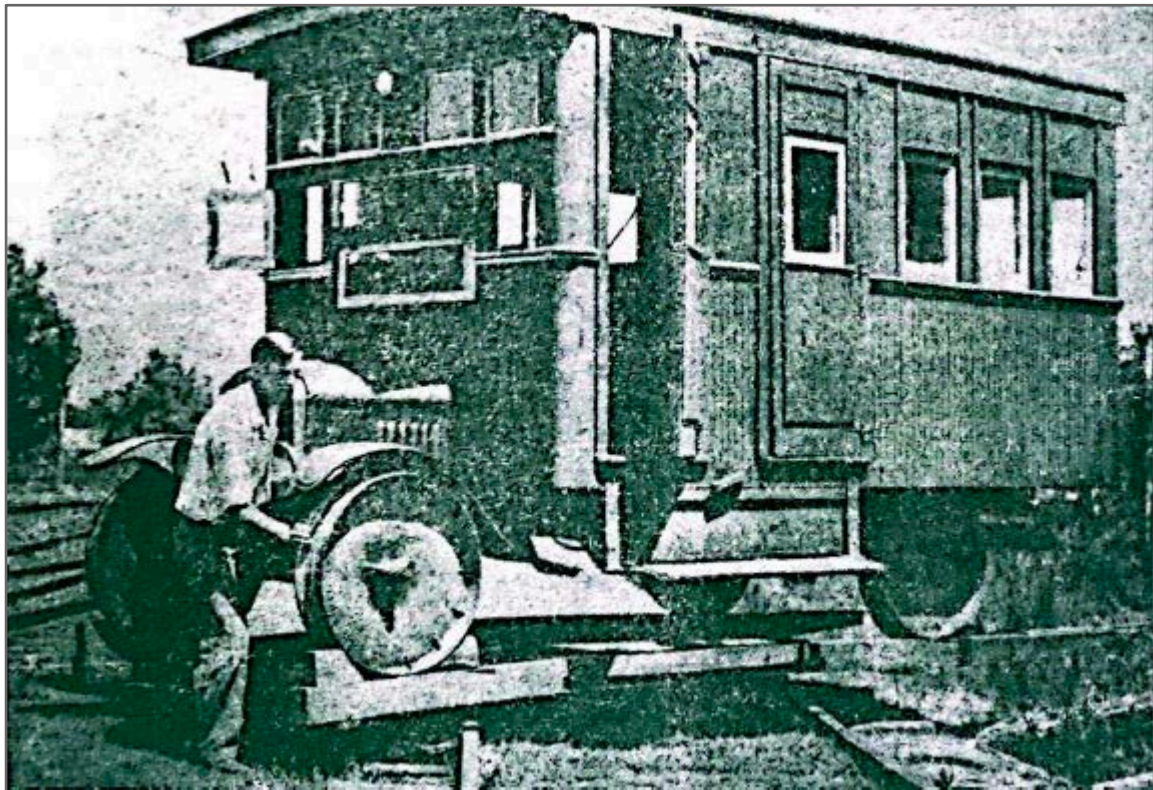


Figure 18. Toonerville Trolley (GNAHRGIS #283196), no date (Bailey 1974, 6).

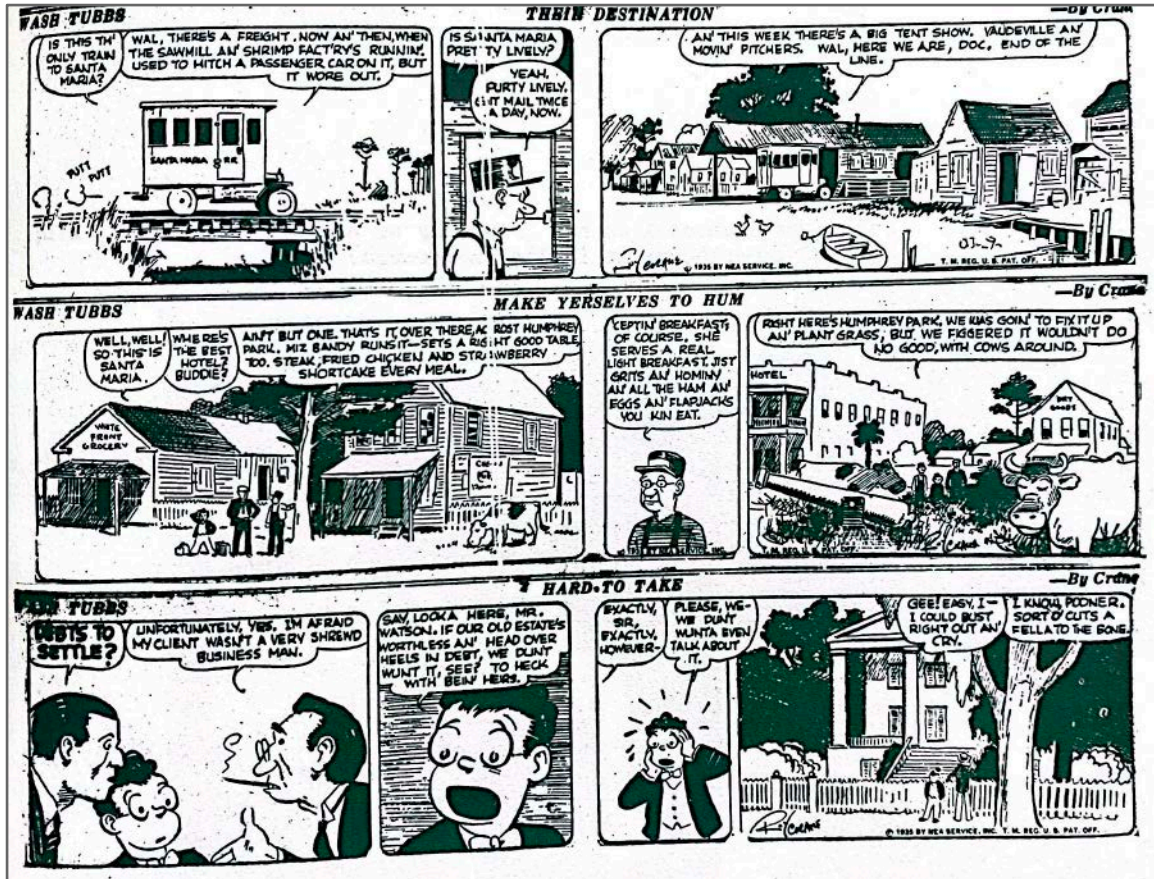


Figure 19. Excerpt from 1935 “Wash Tubbs” comic strip by Roy Crane (Bailey 1974, 23).

Throughout the country, development patterns of the early 20th century shifted to better accommodate the automobile. Accessibility of the automobile and a rising middle class who were able to travel created a demand for a network of roads within communities and for travel and leisure between cities. Streets were paved and connectivity to places via car increased substantially. Highways that connected cities and states were created from long-time routes or trails, recently installed paths and lands adjacent to train corridors.

Fueled by the rising middle class and the automobile, the tourism and auto-related industries thrived within the U.S. during the mid-1920s. A new transportation system of roads emerged in the 1920s. Within the first two decades of the 20th century, the influx of the automobile coupled with the need and desire to provide good roads connecting the states led to an interstate highway system. The system began as a series of road improvements and, where needed, new infrastructure within each state running along or parallel to major routes that already existed. U.S. Highways installed during this period provided direct access on newly paved roads to areas only previously accessible by train. U.S. Highway 17, also known as the Coastal Highway, emerged at this time along the east coast. Construction of the new highway began in the early 1920s to connect Georgia to neighboring states to the north and south through a system of roads. U.S. Highway 17 soon became a major north-south transportation thoroughfare along the east coast.

New and improved corridors created a demand for tourist and auto-related businesses along the coastal regions. Within Camden County, U.S. Highway 17 was constructed through Kingsland and was about 12 miles west of St. Marys. Although it was some distance away, it greatly increased access to St. Marys by individuals who could travel on their own time without regard to train schedules and depot locations. The Riverview Hotel was purchased by Salley Brandon in 1920 to capitalize on the growing tourism industry. She managed the hotel with her sisters Ethel and Semora Brandon. During this time, the hotel also provided entertainment and lodging for local residents as well as travelers, some of which were nationally known including Marjorie Kinnan Rawlings, the illustrator of “Wash Tubbs and Easy”, an admiral and a supreme court justice (Reddick 1994, 120).

For coastal communities, the 1920s political climate created an opportunity for running rum from Cuba and southern communities north to points in the United States where it was not available. It is not clear if St. Marys, historically a dry community, was part of the rum running circuit but there is mention of the possibility in several articles. Isaac Arnow describes one such situation in his 1952 articles on the history of St. Marys,

On the northern half of City Block No. 4 there still stands a wooden building, in remarkably good condition, that is now the property and home of Mrs H.F. Rudolph; despite the fact that it was evidently building before the War of 1812. On the North this building is flush with Bryan Street; on the East it has a long piazza, and on the North-west corner, a porch, also flush with the street. On the second floor there is a well concealed passageway that, in years long past, was probably used for purposes that would not be condoned by the present generation. In that passageway there is sufficient room for hiding many items that may have been smuggled over from Spanish Florida, such as rum and cigars, for the entertainment of the guests of the house; at that time the “Rose Inn.” (Arnow 1952, Ch 54).

Arnow goes on to describe the Rose Inn as a place where gambling and potential criminal activities occurred (Arnow 1952, Ch 54).

In 1929, following a devastating stock market crash, the United States entered an economic downturn. The effects were so devastating that economies around the world were impacted and millions of people lost their savings, employment and homes. With the onset of what became known as the Great Depression, development slowed. For many in St. Marys, however, the economic impacts were similar to their current conditions and thus not as significant. Residents continued to live off of local resources and food from gardens, the St. Marys River and existing livestock. Industry was more affected and during the mid-1930s, the pogy plant closed in 1937 as did many sawmills. The Lang sawmill was the last one to operate downtown and was destroyed by fire around this time. Employment opportunities were scarce (Thompson 1999, 41; Reddick 1994, 118-120).

In an effort to stabilize the economy and provide work for the unemployed, the federal government, under President Franklin D. Roosevelt, enacted a series of regulations and programs from 1933 to 1936 referred to as the New Deal. One of these programs was the establishment of the Works Progress Administration (WPA) who employed professional writers, artists, architects, archaeologists, musicians, actors and those in similar or related fields along with builders, engineers and those who could help build new infrastructure in cities across the country. The Federal Writers' Project, under the WPA, was created in 1935 to employ writers, teachers, historians and the like to publish a series of guidebooks documenting the conditions and history of places to be known as the "American Guide Series." The workers of the Writers' Program on the WPA in Georgia created a tour of the state's towns and countryside which describes St. Marys at the time they visited.

St. Marys (15 alt., 732 pop.) an old sea town occupying an eminence on the St. Marys River. A wide street lined with oaks and wind-scarred cedars leads to the docks and the beautiful wide stretch of the river. Small fishing smacks with their nets drying in the sun give the town the appearance of an Old World fishing village. (Federal Writers' Project 1940, 291).

At the same time the United States War Department was taking inventory of internal resources within the United States. This often created a record of military installations throughout the country documenting every structure within established forts. Through the Army Corps of Engineers, the Department also worked with the United States Geological Survey (USGS) to update topographic maps along the coast, including the Florida-Georgia St. Marys quadrangle map. Initially published in 1919, the detail below is from the 1936 (Figure 20).

A major boost to the economy came in the early 1940s with a new paper mill, increasing employment opportunities that were lost during the preceding decade. Isaac Gilman, who operated Gilman Paper Company in Vermont, came to Camden County to help establish the paper mill in St. Marys in 1940. (Camden County 1972; Bailey 1974, 4; Arnow 1952, Ch 44). Gilman partnered with the City of St. Marys to obtain lands along the North River for the new paper mill that would be operated as the Saint Marys Kraft Corporation. These lands included the former paper mill operated by Burdett Loomis from 1915 to 1918. Housing for construction workers did not exist so homes were converted into boarding houses and apartments to help meet the demand. Many of these employees stayed on to work in the paper mill and houses were constructed for these workers on vacant lots in town. The paper plant was completed in April 1941 for the St. Marys Kraft Corporation and employed 225 workers that first year. It continued to grow in size, employment and product through the 1950s including a paper bag factory. (Bailey 1974, 5; Thompson 1999, 41-2; Reddick 1994, 121; Arnow 1952, Ch 44).

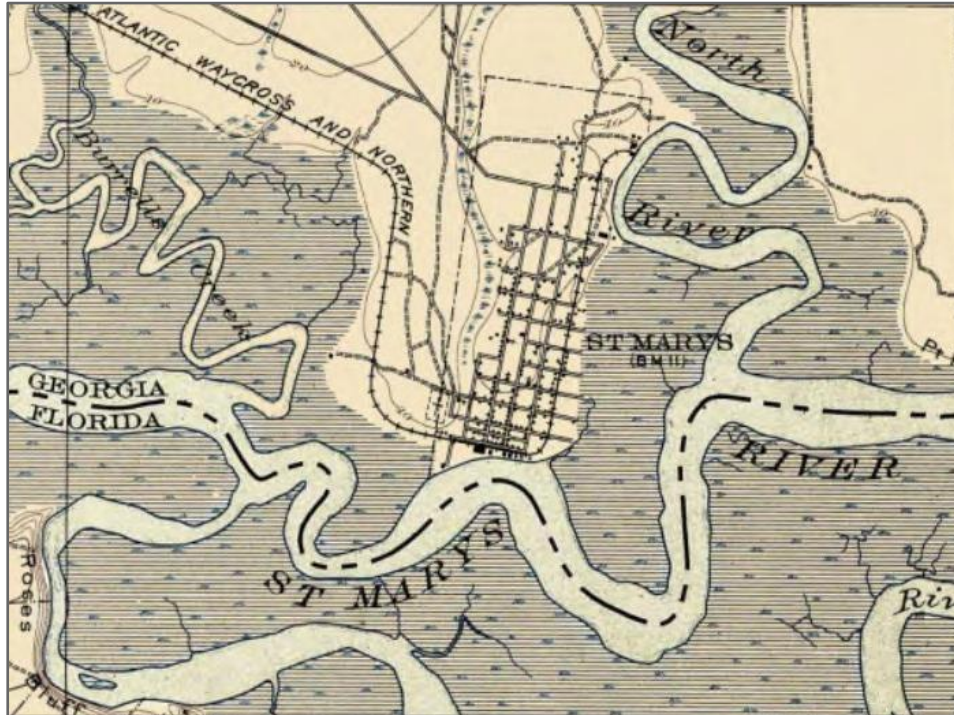


Figure 20. 1936 St. Marys Quadrangle Map, detail of St. Marys (USGS 1936).

The United States arrived on the world stage in 1941 when it officially entered World War II in response to Japan's bombing of Pearl Harbor. U.S. forces fought Japan and worked with allied armies in the West in the fight to preserve France and England from German Nazis. The United States made significant technological advances during the war that would eventually lead to transformative growth and development at home. Sacrifice and rations however were required during the war and construction stopped and industrial plants were converted to serve our military goals. Soldiers were deployed and families adapted to the cause, working domestically to keep businesses going while the men were fighting the war. A watch tower was added to the public pavilion during this time to look for war planes (Reddick 1994, 121).

Camden County experienced a major period of growth during the 1940s. From 1940 to 1950, the county population increased by 4,000 people for a total population of 9,975 (Reddick 1994, 7). Upon the end of the war in 1945, as soldiers returned home, a building boom occurred across the country. Families that had been living in crowded apartments and boarding houses were now able to move into their own homes. As the automobile flourished and transportation routes improved, many families were more mobile and could move to new suburban neighborhoods that were just developing. Advancements in technology made during the war allowed for faster more efficient construction of new suburban house models. The city limits for St. Marys were expanded to help accommodate this new wave of development with curvilinear streets and ranch houses just west and north of the downtown (Bailey 1974, 5).

While the pogy plant and many of the canneries had closed, the fishing industry continued in St. Marys. Calvin Lang purchased a shrimp boat and started a wholesale fishing business. Lang Seafood opened on the waterfront at 100 East St. Marys Street in 1949 (GNAHRGIS #12583). The business was expanded to include a marina (GNAHRGIS #280995) and ferry boat to provide transportation to Cumberland Island for visitors and passengers (Reddick 1994, 119).

In 1957 a new parsonage was constructed for the pastor across the street from the church at 106 E. Conyers Street. It was a red brick linear ranch building with a modern feel (GNAHRGIS #281593; Thompson 1999, 38; Figure 21). Constructed by Milton Readdick [sic], the building was dedicated on February 23, 1958. The garage behind the parsonage was built by Tidewater Construction Company in 1950 and moved to this site in 1957. The parsonage was converted into the church office and a new parsonage erected in 2000 on Nancy Drive (Thompson 1999, 48).

Two Contemporary style church buildings were erected just east of the 1958 church in the decade that followed. The Educational Building was completed in 1959 (GNAHRGIS #281604). Designed by Barker and Cunningham, the building contained “eleven classrooms, kitchen, social hall, offices and storage rooms” (Thompson 1999, 44). A large, two-story addition was constructed in 1993 by Marion Masee and designed by Al Suttles, architect. The Sanctuary was completed in 1966 (GNAHRGIS #281604; Figure 22). It featured seating for 360 and included “two classrooms, parlor, pastor’s study, secretary’s office and choir room (Thompson 1999, 51).



Figure 21. Parsonage for Methodist Church, no date (Thompson 1999, 38).

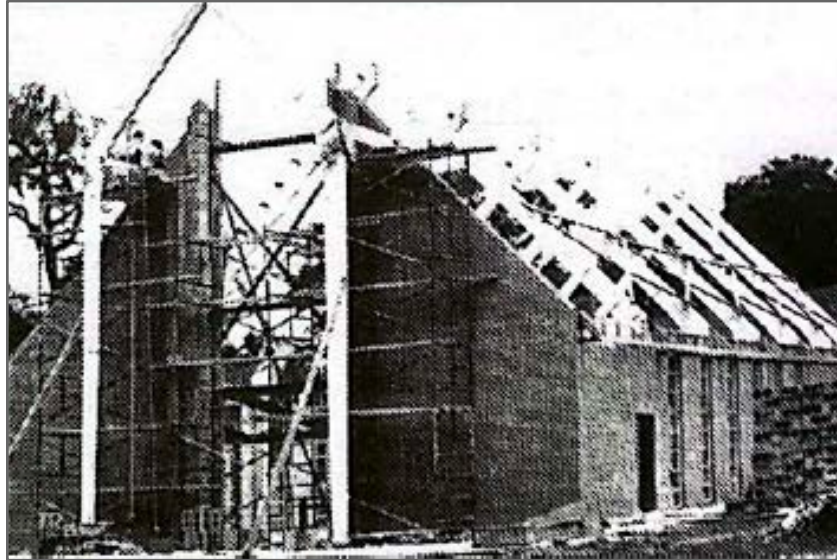


Figure 22. The Methodist Sanctuary under construction, ca. 1965 (Thompson 1999, 62).

By 1960, the population of Camden County reached 9,975. Ten years later, it was 11,334 (Reddick 1994, 7). During this time, construction of Interstate 95 began, following paths of old north-south routes from Maine to Florida. Within Georgia, construction of the new interstate took place from 1965 to 1977. The new route was approved to connect roads from South Carolina to the northern border of Florida following a similar path to U.S. Highway 17. Portions were completed and opened every year with the full route open by 1977. Within Camden County, the new interstate was erected about two miles closer to St. Marys than Highway 17. Interstate 95 emerged as the dominant transportation route for non-local transit, over U.S. Highway 17, and by the 1970s, St. Marys was often bypassed by tourists for new destinations in Florida and those closer to the interstate. In an attempt to compete with emerging commercial corridors and sprawl closer to the interstate, many businesses installed new storefronts and made modifications to existing structures to try and compete. The public pavilion had fallen into disrepair and was demolished in the early 1960s. The Brandon sisters retired and the Riverview Hotel closed during this time (Reddick 1994, 120-121).

The National Park Service acquired Cumberland Island in 1972 and established a “national seashore” (Thompson 1999, 53). This provided protections for the island and created a preservation presence in St. Marys as the primary embarkation point for the island. This created a tourist attraction and destination within the center of downtown St. Marys. As a result, the Riverview Hotel was seen as a potential opportunity on which to capitalize. It had been vacant for some time and was in need of renovations. Dr. Richard Brandon, a nephew of the Brandon sisters, began the renovations in 1974 and with his brother Jerry Brandon, they reopened the Riverview Hotel and Seagle’s Restaurant (Reddick 1994, 120-121).

A few years later, in 1976, the downtown was designated as a historic district in the National Register of Historic Places. The city of St. Marys rebuilt the public pavilion the

following year in the same location as the former structure at the end of Osborne Street on St. Marys Street (GNAHRGIS #280993). The Toonerville Trolley was reinstated to provide tours to visitor's coming downtown (Figure 23; Barefoot 2001, 36). In 1979, the Kings Bay Submarine Base opened (Thompson 1999, 53). Located north of St. Marys, the base installation renewed interest in St. Marys as a place to live and find entertainment.

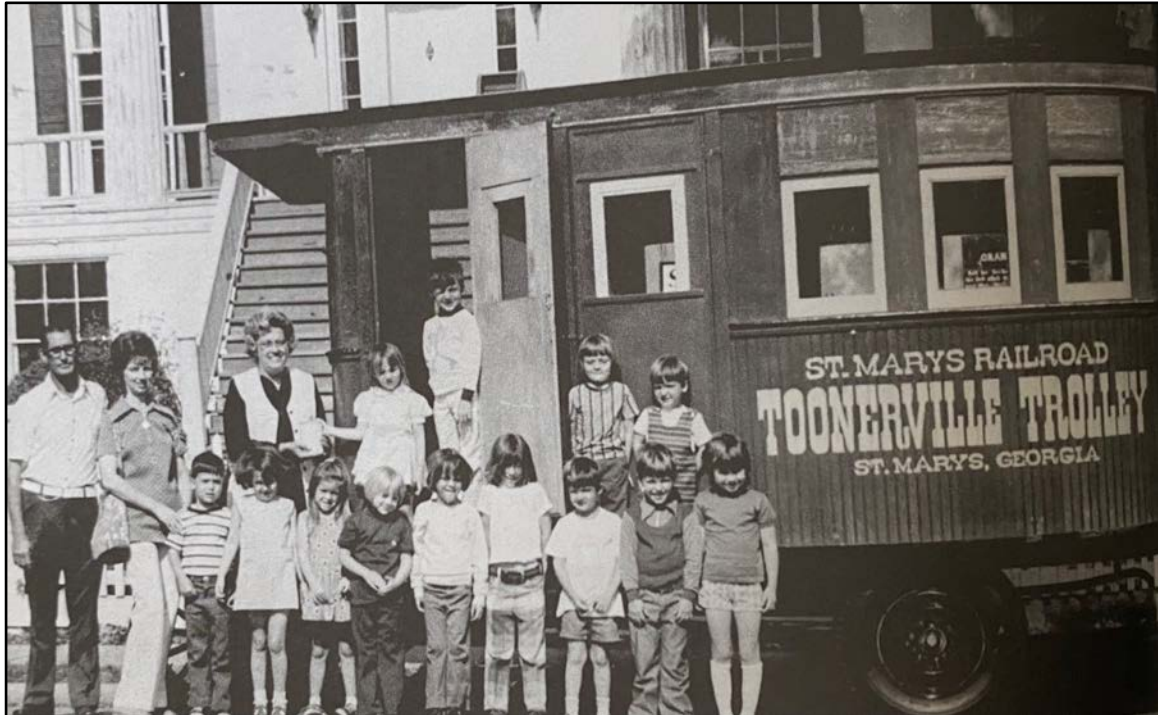


Figure 23. Kindergarten class with the Toonerville Trolley stopped outside Orange Hall, no date (Barefoot 2001, 36).

The designations and installations from the 1970s led to a major increase in tourism and development in and around St. Marys. Pressure to redevelop the waterfront and residential areas increased preservation efforts from local residents and historians who sought to protect the historic character of the community. As a result of these efforts, the city established a historic preservation commission to protect historic resources identified in the NRHP nomination and provide guidance on new construction in the downtown. On the periphery, new one- and two-story residences were constructed for the increase in demand.

St. Marys continues to display its historic character as a small sea port focused on tourism and historic preservation with many residents of the retirement age. Its close proximity to the coast and Florida make it a popular destination but one that has not succumbed to exploitation.

SURVEY RESULTS

A total of 229 historic resources were surveyed during the St. Marys Historic Resources Survey. An additional four (4) resources that were previously surveyed in 2001 no longer exist and were demolished. A survey index of these resources listing the survey field number, Georgia Historic Resources Survey Resource ID number, historic name (if applicable), address, academic style, academic type, and construction date can be found in Appendix 1 at the back of the report.

Methodology

Survey procedures outlined in the 2020 Georgia Historic Resources Survey Manual provided by the Historic Preservation Division were followed throughout the St. Marys Historic Resources Survey.

The surveyors conducted a preliminary area analysis windshield survey or reconnaissance of the survey area from October 2021 through January 2022 to identify an approximate number of resources that were 40 years of age or older (constructed during or before 1982). Data, including dates of construction and addresses from the Camden County Tax Assessors office, the 1985 historic resource survey, and the 2001 historic resource survey were tabulated and field verified to confirm existence. Through this effort, different types of historic properties, locations of their major concentrations, and general periods and patterns of development of the historic resources were identified. An initial reconnaissance of the survey area identified approximately 236 resources, including outbuildings associated with principal buildings, structures, and objects, to be over 40 years of age.

Field survey started at the southern boundary (St. Marys Street) and moved northward from east to west. An intensive field survey was performed in which all properties within the survey area determined to be 40 years of age or older were documented. Through this, 229 resources were updated or newly recorded. Four (4) previously recorded buildings that were no longer existing and had been demolished. Their status was updated in the GNAHRGIS database. Existing resources included 222 buildings, one (1) structure, two (2) park/landscapes, three (3) objects, and one (1) cemetery. These resources were photographed, marked on a community base map, and a Georgia Historic Resource Survey form completed. Following the field survey, all data and digital photos were put in Georgia's Natural, Archeological, and Historic Resources Geographic Information Systems (GNAHRGIS) online database. All data and digital photos resulting from this survey can be viewed by logging onto the GNAHRGIS website, www.gnahrgis.org.

Historical information for the preparation of the developmental history of St. Marys, as well as the background information of the individual properties – including the historic name of the house/building if known – was obtained through research at the Camden County Public Library, Georgia Historical Society, and Georgia Pines Regional Branches of the Public Library system. The 1985 and 2001 historic resource surveys of the city were

cross-referenced throughout the survey process and information from the individual survey forms was incorporated into the survey where appropriate.

Historic Resources Lost Since 2001

Four (4) previously surveyed buildings were demolished between 2001 (when the area was last surveyed) and 2021 (Table 1). When the previous surveys were conducted, the GNAHRGIS system had not yet been developed. The 2001 survey information was entered into the database but the GNAHRGIS ID numbers were not published in the survey report and the points were not accurately placed on the buildings. Using the 1985 and 2001 printed survey cards and reports from the City of St. Marys records and cross-referencing them with the GNAHRGIS system map, all previously surveyed buildings within the survey area were found, field verified, and updated. They have also been tabulated, identifying both the contemporary survey number and the previously assigned but not published GNAHRGIS ID numbers, and cross-referenced with the updated and newly recorded resources. This table is in Appendix 1.

The following is a list of all known previously surveyed buildings that no longer exist. Because these buildings no longer exist, data from these resources such as construction dates, use, style and building type were not used to analyze the character of the district.

Table 1. Previously Surveyed Resources from 2001 that no longer exist.

List #	GNAHRGIS ID #	Address	Date of Demolition
1	12582	102 Osborne Street	c2001
2	12584	105 +/- West St. Marys Street	c2004
3	12590	111 Wheeler Street	c2014
4	12608	208 Wheeler Street	c2005

Construction Dates

In analyzing the results for property distribution by common historical time periods (Table 2), the majority of resources surveyed during the St. Marys Historic Resources Survey were built during the 1950s, or the early Cold War period. In St. Marys and throughout the nation, this was a period of growth and development spurred by a burgeoning middle class, and the dramatic effect of the automobile on American culture. A total of 80 historic resources, or 35% of the properties surveyed, date to this period.

Table 2. Tabulation of Existing Resources by Construction Date.

Time Period	Number of Resources
1780 - 1789	1
1790 - 1799	1
1800 - 1809	2
1820 - 1829	2
1830 - 1839	4
1840 - 1849	1
1850 - 1859	1
1860 - 1869	1
1870 - 1879	5
1880 - 1889	5
1890 - 1899	3
1900 - 1909	16
1910 - 1919	14
1920 - 1929	8
1930 - 1939	11
1940 - 1949	25
1950 - 1959	80
1960 - 1969	35
1970 - 1982	14

Original Use

The categories of uses listed in Table 3 below are defined by the GNAHRGIS survey program and are reflected in the entry for each resource. Original use is meant to convey the original intended use of each resource, regardless of its current use (for example, a gas station that is now used as a café is recorded here as a gas station). The original use of each resource was determined through a combination of field analysis and archival research utilizing historic photos, Sanborn Insurance Maps, city directories, and local histories.

Table 3. Tabulation of Existing Resources by Original Use.

Original Use	Number of Resources
agriculture - fishing facility/marina	3
commercial - bank	1
commercial – store/specialty shop	14
domestic – single dwelling	181
domestic – secondary structures	2
domestic – multiple dwelling	5
domestic – transient(hotel/boarding house)	2
funerary - cemetery	1
governmental (public) - city hall	1
governmental (public) - post office	1
landscape -natural feature	1
landscape - park	1
landscape - pavilion	1
recreation/culture - monument/marker	2
religion – church	7
religion - education bldg/office	2
religion - social hall	1
social/civic - Masonic meeting hall	1
social/civic - women’s club	1
transportation - auto related: truck	1

In analyzing the results for original use, an overwhelming majority of resources were domestic – single dwelling. A total of 181 - or 79% of the resources surveyed, fell into this category. Most of the remaining resources surveyed are commercial - store/specialty shop, representing the second most common original use, making up 6% of resources surveyed. Religion - church represented the third most common use making up 3% of resources surveyed.

ARCHITECTURAL ANALYSIS

Architectural Styles

The architecture of a building – its overall form and ornamentation, is classified as a style. Style has long been among the important ways to identify buildings and has been a useful tool for describing, analyzing, and evaluating them. Architectural style has two definitions. The first and more obvious definition of style is “the decoration or ornamentation that has been put on a house/building in a systematic pattern or arrangement.” The second, more subtle, definition is “the overall design of a house/building including proportion, scale, massing, symmetry or asymmetry, and relationship among parts such as solids and voids or height, depth, and width” (Georgia’s Living Places c1991, I-1).

Of the 229 historic resources surveyed, only 44 properties, or 19% of the buildings surveyed, are representative of an academic architectural style. Buildings exhibiting only minimal elements of a style as well as those with no identifiable style are classified as having “no academic style”.

As indicated in Table 4, Folk Victorian is the most common architectural style found in the survey area - representing 14% of examples exhibiting an academic style, followed by Plain-style, Queen Anne, Greek Revival, and Neoclassical Revival with each representing 11% of examples exhibiting an academic style.

Table 4. Tabulation of Existing Resources by Architectural Style.

Architectural Style	Number of Examples
Federal	1
Greek Revival	5
Queen Anne	5
Folk Victorian	6
Colonial Revival	4
Neoclassical Revival	5
Craftsman	4
English Vernacular Revival	1
Plain-style (ranch houses)	5
Rustic /Western (ranch houses)	1
Contemporary	4
New Formalism	1
Modern Movement - Other	1
Neo-Colonial	1
No Academic Style	178
Not applicable (non-buildings)	7

General Outline of Styles

The outline that follows provides an overview of the different academic architectural styles found within the St. Marys Historic Resources Survey boundaries and gives the architectural and historical contexts that shaped the development of these historic resources on a local, regional, and national level.

Greek Revival (1825 - 1860)

The Greek Revival began in this country with the construction of public buildings that were intended to convey the importance of national ideals such as freedom and democracy. Numerous domestic examples emerged as a result of carpenter's guilds and pattern books written by classically trained architects. Greek Revival became the dominant style of American domestic architecture between 1830 and 1850, during which its popularity led it to be called the National Style.

The style is characterized by a low pitched gable or hip roof with a wide band of trim beneath the cornice of the main roof and porch (representing a classical entablature) that is often undecorated, but sometimes exhibits dentils. A one-, two-, or four-paneled door is usually surrounded by narrow sidelights and a rectangular transom encased in a larger, decorative framework. Most examples exhibit an entry of full height porch supported by either round classical columns, which are commonly found on more academic examples, or square columns, which are typical for vernacular examples of the style. Windows are mostly 6/6 and exhibit simple, yet decorative surrounds (McAlester, 179-180).

Five (5) buildings surveyed during the St. Marys Historic Resources Survey exhibit elements of the Greek Revival style (Figure 24).



Figure 24. Orange Hall (c.1835), 303 Osborne Street - GNAHRGIS #12618.

Queen Anne (1880 – 1910)

Queen Anne was the dominant style of domestic architecture in America from about 1880 until 1910. The style, which is based on Jacobean and Elizabethan precedents, was popularized by a group of English architects led by Richard Bernard Shaw. The style spread in America through pattern books as well as *The American Architect and Building News*, the country's first architectural magazine. The nation's expanding railroad network helped popularize the style by making pre-cut details readily available (McAlester, 266).

A Queen Anne style house is asymmetrical with a complex roof and wall shapes. It displays a variety of textures, materials, and detailing. Details are generally a combination of medieval and classically inspired features. The asymmetrical shape results from a floor plan that is open and flowing. The roof is often steeply pitched and hipped with both front- and side-facing, or cross, gables. Wall surfaces avoid a smooth appearance through the use of projecting bays and materials such as patterned shingles that provide texture. The porch is usually asymmetrical and often wraps around two sides of the house. It is supported with slender turned posts and often decorated with patterned shingles. There are often prominent and elaborate brick chimneys with patterned and corbelled brickwork. A round or multi-sided tower may be found at a corner. Some Queen Anne houses have more classically inspired details such as porch columns, Palladian windows, and cornices with dentils. Windows are generally one-over-one or may have a multi-paned border around the top sash (Georgia's Living Places 1991, 9-10).

Five (5) buildings surveyed during the St. Marys Historic Resources Survey display elements of the Queen Anne style, accounting for 11% of surveyed properties conforming to an academic style (Figure 25).



Figure 25. Bachlott-Porter House (c.1911) - 220 Osborne Street, GNAHRGIS #12625. An example of the Free Classic subtype of the Queen Anne style.

Folk Victorian (1870s – 1910s)

The Folk Victorian style is defined by the presence of Victorian detailing on National Folk, or post-railroad house forms. The principal areas of elaboration are the porch and cornice line. The Queen Anne-inspired spindle work detailing (turned spindles and lace-like spandrels), jigsaw cut trim, and turned or chamfered posts are characteristic porch details. Italianate-inspired brackets are commonly found along the cornices. Although Folk Victorian houses share similar decorative detail, they are easily differentiated from Queen Anne style houses by virtue of their symmetrical facades and the lack of textured and varied wall surfaces that is characteristic of the former (McAlester, 309-310).

Folk Victorian houses were built across Georgia in very large numbers and were commonly found in both urban and rural parts of the state from the 1870s through the 1910s (Georgia's Living Places 1991, 10).

Six (6) buildings surveyed during the St. Marys Historic Resources Survey display elements of the Folk Victorian, accounting for 14% of surveyed properties conforming to an academic style (Figure 26).



Figure 26. Miller-Arnou House (c.1900) - 105 W. Bryant Street, GNAHRGIS #12588.

Colonial Revival (1880 – 1955)

Colonial Revival was the dominant style for domestic buildings throughout the nation during the first half of the 20th century. The term “Colonial Revival” refers to the rebirth of interest in the early English and Dutch houses of the Atlantic seaboard that followed the Philadelphia Centennial Exposition of 1876. The style draws primary inspiration from Georgian and Adam prototypes, with secondary influences coming from Post-medieval English and Dutch Colonial sources. Examples exhibiting details from two or more of these precedents is common.

Early Colonial Revival style buildings were largely free interpretations of colonial precedents featuring exaggerated colonial decorative details. The Colonial Revival Movement of the late 19th century provided the inspiration for the Shingle style and the Free Classic Queen Anne style, which was closely related to the asymmetrical Colonial Revival house.



Figure 27. First Baptist Church (c.1950) - 102 W. Weed Street, GNAHRGIS #281213.

Common characteristics of Colonial Revival-style houses include: a symmetrical façade; accentuated front door often featuring a pediment supported by pilasters or a small gabled stoop supported by slender columns; transom over the door or sidelights are common; windows have double hung sashes, usually with multiple lights in one or both sashes; and windows are frequently paired.

Four (4) buildings surveyed during the St. Marys Historic Resources Survey displays elements of the Colonial Revival style, accounting for 9% of surveyed properties conforming to an academic style (Figure 27).

Neoclassical Revival (1890s -1930s)

The Neoclassical Revival style has its origins in the classically inspired models designed and executed by the nation’s top architects at the World’s Columbian Exposition of 1893. At a time when the United States was beginning to assert its economic and military influence on the world stage, the Exposition was intended to illustrate America’s artistic and cultural parity with the countries of the Old World.

Although never quite as popular as Colonial Revival, the Neoclassical Revival style was a dominant style for domestic building during the first half of the 20th century. The Neoclassical Revival style was built in Georgia’s rural areas, cities, and small towns from the 1890s through the 1930s” (Georgia’s Living Places, 12). The style, which is primarily based on an eclectic mixture of Early Classical Revival and Greek Revival styles, usually features a partial width, full height portico supported by classical columns, typically Ionic or Corinthian. Neoclassical Revival houses have symmetrical facades and often feature decorative door surrounds based on Georgian, Adam, or Greek Revival precedents, modillions or dentils under the eaves, and paired, triple, or bay windows (McAlester, 344).

Five (5) buildings surveyed during the St. Marys Historic Resources Survey displays elements of the Neoclassical Revival style, accounting for 11% of surveyed properties conforming to an academic style (Figure 28).



Figure 28. Frohock-Bauknecht House (c1907) - 201 Ready Street, GNAHRGIS #12626.

Craftsman (1910 – 1930s)

The Craftsman style was the most popular early 20th century style in Georgia. Craftsman houses were built across the state in rural, small town, and urban settings, from the 1910s through the 1930s (Georgia’s Living Places, I-19). Craftsman houses were inspired by the work of Charles Sumner and Henry Mather Greene, two California architects who designed and executed a number of highly detailed landmark buildings that combine such influences as the English Arts and Crafts movement, Oriental wooden architecture, Swiss roof forms, and the manual arts. Vernacular versions of Greene and Greene’s work were spread throughout the country through pattern books and popular magazines, quickly making the one-story Craftsman house the most popular and fashionable smaller house in the country (McAlester, 454).

The Craftsman house uses a wide variety of materials both for its structure and decorative detail. It has a low-pitched roof that is usually gabled but also may be hipped, giving a generally horizontal effect. The widely overhanging eaves are open with exposed rafters. Large gables have decorative brackets or braces at the eaves and may be covered with half-timbering. Roof dormers are sometimes found. Walls are most often wood but may also be covered with shingles or a masonry veneer of stone or brick. Porches have short square columns set on heavy masonry piers extended to the ground. Windows may have a multi-paned sash over a large one paned sash. Craftsman houses are most often asymmetrical with a general open and functional plan. The Craftsman style is closely associated with the bungalow house type; however, it was popular as ornamentation for many different house forms (Georgia’s Living Places, I-19).

Four (4) buildings surveyed during the St. Marys Historic Resources Survey displays elements of the Craftsman style, accounting for 9% of surveyed properties conforming to an academic style (Figure 29).



Figure 29. 109 Wheeler Street (c.1930), GNAHRGIS #12589.

Contemporary Style (1950 - 1969)

The Contemporary style represents a post-war iteration of the International style in which defining elements of the former were softened into a more widespread vernacular. The style was equally applied to both commercial and residential building types and was a favorite for architect-designed buildings in Georgia during the late 1950s and early 1960s. The style occurs in two distinctive subtypes based on roof shape: flat or gable. The flat-roofed subtype is a derivation of the earlier International style which it further resembles in its lack of decorative detailing. The gabled subtype is more strongly influenced by the early modernism of the Craftsman and Prairie style and often features overhanging eaves and heavy exposed roof beams. Both subtypes feature various combinations of wood, brick, and stone exterior cladding and lack traditional detailing. Other character-defining features include open floor plans, expressed post-and-beam construction (in wood or steel), open gable ends enclosed with glass/flat roofs with widely overhanging eaves and cantilevered canopies, flush mounted metal frame full-height and clerestory windows, and exterior staircases, decks, patios and balconies (McAlester, 477).

Four (4) buildings surveyed during the St. Marys Historic Resources Survey displays elements of the Contemporary style, accounting for 9% of surveyed properties conforming to an academic style (Figure 30).



Figure 30. St. Marys Women’s Club (c.1954) - 412 Osborne Street, GNAHRGIS #283418.

Plain Style (1950-1975)

“Plain” or “no academic style” ranch houses are those examples of the type whose appearance is defined primarily by its sub-type plan-form and not by historical styles of applied ornamentation. The Plain style – which is the most prevalent architectural style of ranch house in Georgia, relies on the architectural fundamentals of form, roofline, window and door openings, and wall treatments for effect. The style displays an absence of historically derived forms and ornament, and the presence of functionally derived forms and features, straightforward construction and use of materials, and an exterior design that often reflects the interior arrangement of spaces and functions. Plain style ranch houses were among the earliest ranch houses in Georgia and are found on every sub-type (Cloues, slide 54).

Five (5) buildings surveyed during the St. Marys Historic Resources Survey displays elements of the Plain style, accounting for 11% of surveyed properties conforming to an academic style (Figure 31).



Figure 31. 313 Ready Street (c1962), GNAHRGIS #281594.

Architectural Types

In addition to architectural style, Georgia buildings may be categorized by architectural building type. Building type means the overall form of the house/building, the unadorned outline or “envelope” of the main or original part of the house/building, as well as the general layout of the rooms. The simplest definition of building type is the formula, *plan + height = type*. Knowing the house/building type allows us to compare one house/building to others of the same form and can also tell us the general distribution of similar houses/buildings throughout the state (House Types in Georgia 1991, 1). Table 5 below identifies the architectural types present in the St. Marys survey.

Table 5. Tabulation of Existing Resources by Architectural Type.

Architectural Type	Number of Examples
Apartment Building/Garden	1
Apartment Building/Other - Duplex	2
Apartment Building/Other – Quadruplex	2
Apartment Bldg/Other - Modern Strip/linear	1
Church/Central Tower	2
Church/Front Gable	4
Commercial - Arcade/Strip Mall	1
Commercial – Multiple Retail	4
Commercial - Office	1
Commercial – Retail and Office	6
House/One-story – Single Pen	1
House/One-story – Hall-Parlor	6
House/One-story – Central Hallway Cottage	4
House/One-story – Double shotgun	1
House/One-story – Shotgun	1
House/One-story – Gable Wing Cottage	1
House/One-story – Georgian Cottage	5
House/One-story – Queen Anne Cottage	2
House/One-story – Pyramid Cottage	3
House/One-story – Side Gable Cottage	1
House/One-story – Bungalow/Front gable	17
House/One-story - Bungalow/Hip	5
House/One-story - Bungalow/Side Gable	3
House/One-story – American Small House	49
House/One-story – Ranch/Compact	3
House/One-story - Ranch/Courtyard	1
House/One-story - Ranch/Linear	19
House/One-story - Ranch/Rambling	1
House/One-story - Ranch/Linear w/Clusters	8
House/One-story - Ranch/Half-Courtyard	2

Architectural Type	Number of Examples
House/One-story - Manufactured	5
House/One-story - mobile home	1
House/Two-story - Plantation Plain	1
House/Two-story - I-house	5
House/Two-story - Georgian House	4
House/Two-story - Gable Wing House	1
House/Two-story – Side Hallway House	6
House/Two-story - Queen Anne House	1
House/Two-story – American Foursquare	4
House - Unable to Determine Type	7
House - Unidentified House Type	12
Lodge Hall - Masonic	1
Other Building Types - General	3
Other Bldg Type - Unable to Determine	3
Other Bldg Type - Community Center	1
Other Building Type - Foursquare Cottage	2
Other Building Type - Garage Apartment	2
Other Building Type - Marina	2
Places of Accomodation - Hotel/Boarding Hse	2
Public/Governmental - City Hall	1
Public/Governmental - Post Office	1

A total of 200 properties surveyed during the St Marys Historic Resources Survey were identified as conforming to one of the architectural building types recognized by the Historic Preservation Division. Table 5 lists the forty-five (45) types existing within the survey area. As indicated in Table 5, the American small house (48 historic resources or 24%), the linear ranch house (20 historic resources or 10%), and the front gable bungalow American Small House (17 historic resources or 8.5%) are the most common building types identified in the survey area. Twenty-two (22) historic resources, representing 10% of the total number of buildings surveyed, were either too altered to determine the building type or did not conform to any officially accepted academic building type. Seven (7) non-buildings were also identified during the survey.

General Outline of Building Types

The outline that follows provides an overview of the different academic building types found during the St. Marys Historic Resources Survey and gives the architectural and historical contexts that shaped the development of these historic resources on a local, regional, and national level.

Georgian Cottage/Georgian House (1780s – 1920s)

Georgian Cottage

The Georgian cottage is possibly the single most popular and long-lived house type in Georgia. The Georgian cottage is named for its floor plan, not the state, and is derived from 18th century Georgian architecture. The Georgian plan consists of a central hallway with two rooms on either side. The plan shape is usually square or nearly square, and the chimneys are sometimes in the exterior walls but usually in the interior of the house, between each pair of rooms. Houses of this type were built in all periods of Georgia history, well into the 20th century, but with the greatest concentrations between 1850 and 1890 (House Types in Georgia 1991, 6).

Five (5) buildings surveyed during the St. Marys Historic Resources Survey are examples of the Georgian cottage type, making up 2.5% of surveyed buildings conforming to an academic building type (Figure 32).



Figure 32. Stone-Bunky-Guy House (c.1885) - 207 Ready Street, GNAHRGIS #12624.

Georgian House

Except for its two-story height, the Georgian house has all the characteristics of the Georgian cottage. Although the two-story house is less numerous than the one-story cottage, particularly in rural settings, it too was popular from the first decades of the 19th century well into the 20th century. Most examples of the type, however, were built in the periods 1850 – 1860 and 1900 – 1930, chiefly in the larger towns and cities (House Types in Georgia 1991, 14).

Four (4) buildings surveyed during the St. Marys Historic Resources Survey were identified as Georgian house type houses, accounting for 2% of surveyed properties conforming to an academic building type (Figure 33).



Figure 33. Sandiford-Goodbread House (c.1874) - 209 Osborne Street, GNAHRGIS #12613.

Hall-Parlor (1850s - 1930s)

Hall-parlor houses, named after two old fashioned uses for rooms, are a traditional British folk form that consists of two unequal rooms. Entry is in the larger of the two rooms, the hall (not hallway), which served multiple functions. Almost always gabled, the hall-parlor house can have one or two exterior gable end chimneys, but typically features a single chimney in the parlor end. Although this house is one of the earliest found in America, in Georgia most of the remaining examples were built in the last half of the 19th century and the first three decades of the 20th. The type was adaptable and expandable and was popular for farm owners, tenant farmers, and mill workers alike. (House Types in Georgia 1991, 4)

Six (6) building surveyed during the St. Marys Historic Resources Survey were identified as hall-parlor type houses, making up 3% of surveyed properties conforming to an academic building type (Figure 34).



Figure 34. 200 E. Weed Street (c.1890), GNAHRGIS #12639.

Bungalow (1900s - 1930s)

Sometimes mistakenly referred to as a style, bungalow house forms are long and low with irregular floor plans within an overall rectangular shape. Integral porches are common, as are low-pitched roofs with wide overhangs. Bungalows were very popular in all regions of Georgia between 1900 and 1939, almost as popular in rural areas as in cities and towns. The bungalow type is divided into four subtypes based on roof forms and roof orientation: front gable (Figure 35), side gable (Figure 36), hip (Figure 37), and cross gable. The front and side gable versions of the bungalow greatly outnumber hipped bungalows, while cross-gabled bungalows are rare (House Types in Georgia 1991, 10).

Twenty-five (25) buildings surveyed during the St. Marys Historic Resources Survey were identified as bungalow type houses. The bungalow was the third most common building type found within the survey area, accounting for 12.5% of surveyed buildings conforming to an academic building type.



Figure 35. Smith-Aldridge House (c1919) - 103 E. Weed Street, GNAHRGIS #12633. Example of the front gable bungalow subtype.



Figure 36. 105 Wheeler Street (c.1940) - GNAHRGIS #12586. Example of the side gable bungalow subtype.



Figure 37. Townsend-Gay House (c.1905) - 202 W. Bryant Street, GNAHRGIS #12598. An example of the hip bungalow subtype.

American Small House (1940s - 1950s)

Also commonly referred to as the “post-World War II house,” the ubiquitous American Small House can be found in 1940s and early 1950s suburbs and subdivisions across America. Built to accommodate the staggering demand for housing precipitated by the large number of returning servicemen and their growing families following the defeat of the Axis Powers in 1945, these houses were designed to provide basic habitation for newly-weds and beginning families. Inexpensive and easy to build, the American Small House was ideally suited to meet these needs.

The type is generally characterized as a small, one-story, rectangular-shaped two-bedroom house of balloon frame construction (Figure 38). It typically features a side gable, asphalt shingle roof with little or no eave overhang and often features triangular shaped wood vents in side gables. Another common characteristic is the use of inexpensive cladding, such as asbestos siding, as an original exterior siding (although the use of shiplap and clapboard siding is common as well). The basic floor plan of the house is similar to other small houses of the era, being two unequal rooms wide by two rooms deep. Entry is in the living room, which is typically adjacent to the master bedroom located in the opposite front corner of the house. A small interior hallway located in the center of the house provides access to the kitchen (which is also accessed through the living room) and second bedroom, which flanks a small bathroom located at the back of the house. These houses sometimes include a small dining room wing or sunroom located on the side of the house adjacent to the living room and/or a small ell for extra living space on the rear of the house. These types of features are often historic additions that were added in later years (McAlester, 477; Clouse, no date).



Figure 38. 310 Wheeler Street (c.1950), GNAHRGIS #281597.

Forty-nine (49) buildings surveyed during the St. Marys Historic Resources Survey Survey were identified as American small house type. The American small house was the most common building type found within the survey area, accounting for 24% of surveyed buildings conforming to an academic building type (Figures 39 and 40).



Figure 39. 606 Ready Street (c.1955), GNAHRGIS #283619.



Figure 40. 512 Wheeler Street (c.1950), GNAHRGIS #283199. One of a row of six identical American small house type houses in which the entrance is located on the side of the building.

Ranch (1940s - 1970s)

The ranch house originated in the mid-1930s by several creative California architects and gained popularity during the 1940s to become the dominant house type throughout the country during the decades of the 1950s and 1960s. The popularity of the sprawling ranch houses was made possible by the country's increasing dependence on the automobile. Streetcar suburbs of the late 19th and early 20th centuries still used relatively compact house forms on small lots because people walked to nearby streetcar lines. As the automobile replaced streetcars and buses as the principal means of personal transportation in the decades following World War II, compact houses could be replaced by sprawling designs on much larger lots. Never before had it been possible to be so lavish with land, and the rambling form of the ranch house emphasizes this by maximizing façade width (which is further increased by built-in garages that are an integral part of many ranch houses).

The type is loosely based on early Spanish Colonial precedents of the American Southwest, modified by influences borrowed from Craftsman and Prairie modernisms of the early 20th century. Asymmetrical one-story shapes with low-pitched roofs dominate (Figure 41).



Figure 41. 407 Wheeler Street (c1967), GNAHRGIS #283183. Example of the compact ranch subtype - the length of the house is less than twice the width (minus the carport).

Three common roof forms are used: the hipped version is likely the most common, followed by the cross-gabled, and, finally, side-gabled examples. There is usually a moderate or wide eave overhang. This may be either boxed or open, with rafters exposed

as in Craftsman houses. Both wooden and brick wall cladding are used, sometimes in combination. Builders frequently add modest bits of traditional detailing, usually loosely based on Spanish and English precedents. Decorative iron or wooden porch supports and decorative shutters are the most common. Ribbon windows are frequent as are large picture windows in the living area. Partially enclosed courtyards or patios, borrowed from Spanish houses, are a common feature. These private outdoor living areas to the rear of the house are a direct contrast to the large front and side porches of most late 19th and early 20th century types (McAlester, 479).

Thirty-four (34) buildings surveyed during the St. Marys Historic Resources Survey were identified as ranch type houses. The ranch house is the second most common building type found within the survey area, accounting for 17% of surveyed buildings conforming to an academic building type (Figures 42-44).



Figure 42. 200 E. Bryant Street (c.1960), GNAHRGIS #281078. Example of the linear w/clusters ranch subtype.



Figure 43. 209 W. Bryant Street (c.1965), GNAHRGIS #280984. An example of the linear ranch subtype.



Figure 44. 209 W. Dillingham Street (c.1975), GNAHRGIS #283184. Example of the half courtyard ranch subtype.

Side Hallway (c.1820s - 1910s)

The Side Hallway is relatively uncommon in Georgia. Most examples of the type are located in the state’s oldest cities, where its narrow façade made it especially suitable for urban houses. Most early examples were built between 1820 and 1850 and are located in Savannah, where it is the most common building type, and in Augusta. The Side Hallway house is named after the location of the hallway at the side of the house. The hall normally contained a staircase and was two rooms deep. There are three subtypes: the row house, an attached single-family house which shares a party wall (presented on page 53); the Savannah house, detached with a raised basement; and the Augusta house, detached without a basement. Although most examples were built in the early 19th century, variations of the type persisted into the early 20th century (House Types in Georgia 1991, 14).

Six (6) buildings surveyed during the St. Marys Historic Resources Survey were identified as side hallway type houses of the “Augusta” subtype, accounting for 3% of surveyed buildings conforming to an academic building type (Figure 45).



Figure 45. Bloodworth House (c.1870) - 506 Ready Street, GNAHRGIS #12622.

I-house (1840s – 1880s)

So called because it is such a common house type in the states beginning with the letter “I”, the I-house is far less common in Georgia than in other states of the Southeast. Although it appeared sporadically in Georgia throughout the 19th century, most of the remaining I houses were built in the 1840s and 1850s, 1870s, and 1880s. I-houses are one room deep and two rooms wide. The various floor plans of the I-house (all found in one-story houses as well) determined the subtype: central hallway (two equal sized rooms flanking a centered hallway), hall-parlor (two unequal sized rooms with the entrance in the larger room, or hall), double pen (two equal sized rooms each with its own exterior entrance), and saddlebag (two equal sized rooms flanking a central chimney). I-houses generally have gabled roofs with either a central chimney or two exterior chimneys (House Types in Georgia 1991, 13).

Five (5) buildings surveyed during the St Marys Historic Resources Survey were identified as I-house type houses, accounting for 2.5% of surveyed properties conforming to an academic building type (Figure 46).



Figure 46. John Rudolph House (c.1874) - 310 Osborne Street, GNAHRGIS #12627.

American Foursquare (1910s – 1920s)

Unlike the regionally popular, one-story pyramid cottage, the American Foursquare was a very popular house type throughout the nation during the first three decades of the 20th century. The American Foursquare, consisting of a square mass capped with a pyramidal roof, was reputed to provide maximum space for the cost. The type features four principal rooms per floor, with one of the front rooms serving as the entry or stair hall. Appearing mostly in urban areas, the American Foursquare was popular in Georgia for only about 15 years, between 1915 and 1930 (House Types in Georgia 1991, 16).

Four (4) buildings surveyed during the St Marys Historic Resources Survey were identified as American Foursquare type houses, accounting for 2% of surveyed buildings conforming to an academic building type (Figure 47).



Figure 47. Rudolph-Riggins House (c.1885), 229 Osborne Street, GNAHRGIS #12614.

Single Family House/One-Story House Types

This group of house types are all examples of national folk forms that were popular in Georgia during the 19th through the early 20th centuries. In St. Marys, these simple houses were used to house factory workers, laborers, sailors, fishermen and other kinds of blue-collar workers and their families. Most examples are balloon frame and were built between 1890 and 1950. The **single pen** - of which there is one (1) example, consists of a single room, either square or rectangular (Figure 51). The **shotgun** - of which there is one (1) example), is one room wide and two or more rooms deep, contains no hallways, and most often features a gable roof. The **double shotgun** - or which there is one (1) example), is a two-family dwelling consisting of two shotgun houses sharing a party wall. The **central hallway cottage** - of which there are four (4) examples, consists of two equal sized rooms flanking a central hallway and frequently features exterior end chimneys at both ends (Figure 50). The **gable wing cottage** - of which there is one (1) example), is a T or L-shaped, three-room house featuring a gable front at one end of a recessed wing that is parallel to the facade. **Pyramid cottages**, (3 examples), **side gable cottages** (1 example), and **foursquare cottages** (2 examples) all feature the same floor plan - two equal rooms, two rooms deep, but are differentiated by the shape of its roof (Figure 49). The **Queen Anne Cottage** - of which there are two (2) examples, is more representative of middle-class housing of the period. It features a square main mass with projecting gables on the front and sides, asymmetrically arranged rooms with no hall, and a pyramidal or hip shaped roof (Figure 48). (House Types in Georgia 1991, 3-10).



Figure 48. 307 Ready Street (c.1905), GNAHRGIS #12631. An example of the Queen Anne cottage type.



Figure 49. Robert Bunkley House (c.1915) - 404 Ready Street, GNAHRGIS #12649. An example of the foursquare cottage type.



Figure 50. 211 E. Weed Street (c.1899), GNAHRGIS #12640. An example of a central hallway cottage.



Figure 51. 219 ½ Osborne Street (c.1910), GNAHRGIS #12616. An example of a single pen type house.

Single Family House/Two-Story House Types

There were three (3) additional single family two-story house types identified within the survey area: one (1) **Plantation Plain**, (1) **gable wing house**, and one (1) **Queen Anne house**. The Plantation Plain is of braced frame construction and was built during the early 19th-century while the gable wing and Queen Anne houses are of balloon frame construction and were built during the early 20th century. A Plantation Plain type house has a two-story block at the front, with either a central hallway, hall-parlor, or double pen plan, and a one-story range of rooms on the rear, consisting of either three rooms or, more commonly, a short rear hallway flanked by a pair of rooms (Figure 52). The rear section is typically shed-roofed, the two-story block is usually gabled, and there is most often a full-width, one-story front porch. The gable wing house is the two-story version of the gable wing cottage, featuring a gable front at one end of a recessed wing that is parallel to the facade (Figure 53). T-shaped and usually gabled, the gable wing house is far less common than the gable wing cottage. The Queen Anne house is the two-story version of the Queen Anne cottage, featuring a square main mass with projecting gables on the front and sides, asymmetrically arranged rooms with no hall, and a pyramidal or hip shaped roof (Figure 54). (House Types in Georgia 1991,13-15).



Figure 52. Arnow House (c.1834), 206 Ready Street, GNAHRGIS #12639. An example of the Plantation Plain house type.



Figure 53. 206 W. Weed Street (c.1900), GNAHRGIS #281397. Despite exterior alterations, this house can still be discerned as an example of the gable wing house type.



Figure 54. Bachlott-Porter House (c.1911), 220 Osbourne Street, GNAHRGIS #12625. An example of the Queen Anne house type as well as an excellent example of the Free Classic subtype of the Queen Anne style.

Unable to Determine Building Type

Building types that have been altered to such an extent that the house type cannot be determined have been grouped into this category for the purpose of this survey. Five (5) resources identified during the St. Marys Historic Resources Survey met the criteria (Figure 55).



Figure 55. Jackson--Clark-MacDonnell House (c.1801) - 314 Osborne Street, GNAHRGIS #12628. Several historic alterations and additions have made it difficult to determine the building's original type.

Unidentified House Types

Single family houses which are not representative examples of an academic building type as defined in “*Georgia’s Living Places*” or other context and identification documentation, have been grouped into this category for the purpose of this survey. The nine (9) houses that were identified during the St. Marys Historic Resources Survey display a diversity of age, size, height, and building materials as exhibited by the following examples (Figures 56 and 57).



Figure 56. 102 E. Weed Street (c.1950), GNAHRGIS #281143 – This house is not representative of a building type identified by the Historic Preservation Division.



Figure 57. 508 Norris Street (c.1970), GNAHRGIS #283529 - This log, Adirondack style house does not appear to be representative of any academic building type.

Other Building Types

There were a variety of building types identified during the St Marys Historic Resources Survey in which there were only a handful of examples. These resources are grouped below according to their type category (ie: “single family house”, “commercial building type”, etc.).

Apartment Building Types

There were four apartment buildings identified within the St. Marys survey area: one (1) apartment building/other (Figure 58); two (2) quadruplexes (Figure 59); two (2) duplexes (Figure 60) and one (1) modern strip/motel - linear form (Figure 61). A quadruplex is any two-story apartment building having four units, with two units located on each floor, and typically having a central entry foyer. A duplex apartment is either a one-story building with two units located side by side or a two-story building containing two units - one unit per floor. A modern strip/motel is a multi-unit, one-story apartment building having a linear or courtyard shape with each unit being entered directly from the exterior (“Modern Apartment Complexes in Georgia: 1936-1954”, c2003).



Figure 58. Carriage House Apartments (c.1953), 104 W. Stable Alley - GNAHRGIS #280871. This apartment complex resembles a garden apartment but is classified here as “apartment building/other” as it does not feature a defined courtyard or enclosed garden as is characteristic of the type.



Figure 59. 207 E. Dillingham Street (c.1970), GNAHRGIS #283129. An example of the quadruplex type.



Figure 60. 102 E. Bryant Street (c.1950), GNAHRGIS #12620. An example of the duplex apartment type.



Figure 61. 211 W. Dillingham Street (c.1965), GNAHRGIS #283188. An example of the modern strip apartment type.

Churches/Places of Worship

There were six (6) churches identified within the St. Marys survey area, with two (2) – Our Lady Star of the Sea Catholic Church (c.1837) at 201 Osborne Street (GNAHRGIS #12610) and St. Mary’s Presbyterian Church (c.1808) at 100 W. Congress Street – being examples of the **central tower** church type, with the remaining four (4) examples all being of the front **gable church** type. A front gable type church is a straightforward box with one or two doors in the front and five or more windows in the sides (Figures 62 and 63). A central tower type features a projecting entry tower in the center of the facade which is usually pyramid-roofed (Figure 64). The front gable type is more common than the central tower in Georgia (Church Types in Georgia, 1).



Figures 62 and 63 (above). Two examples of the front gable type church located at 105 E. Conyers Street: the modern church (GNAHRGIS # 281604) built in 1966 (at left), an excellent example of New Formalism, and the original Greek Revival style St. Marys United Methodist Church (GNAHRGIS # 12639) built in 1858.



Figure 64 (left). St. Marys Presbyterian Church (GNAHRGIS #12636) - one of two examples of the central tower church type identified within the survey area.

Commercial Building Types

All eleven (11) of the commercial buildings identified within the St. Marys survey area are located along St. Marys or Osborne Streets. The **multiple retail** type – of which there were three (3) examples, is a multi-unit building standing alone or with others, features a flat or sloping roof, and store units with identical three bay facades. The **retail and office** type – of which there were seven (7) examples, are typically two to four stories tall, have flat or sloped roofs, and are built as single units standing alone or as multiple units sharing a party wall (commercial row). Retail or service-related functions are typically located at street level while other uses, usually offices, are located on the upper floors with access from outside entrances. All of the commercial buildings identified within the survey area were built between 1895 and 1950, are one or two stories in height, and are generally of brick or concrete block construction (Figures 58 and 59). There is also a nondescript, c1950s one-story commercial office located on a lane off Osborne Street. (Commercial Types in Georgia, 1-2).



Figure 65. 300 Osborne Street (c.1955), GNAHRGIS #281576 - An example of the multiple retail type.



Figure 66. Cam Sheffield Building (c.1940), 112 Osborne Street, GNAHRGIS #12581 - An example of the retail and office type.

Places of Accommodation

There were two places of accommodation identified within the survey boundaries: (1) hotel and one (1) boarding house. Each is typical of the type of lodging that was commonly found in small Georgia towns during the late 19th and early 20th century. A hotel often has several floors and many rooms with internal corridors and stairs, designated lobby, as well as a restaurant and/or other retail offering that are open to the general public (Figure 67). A boarding house is a lodging house in which meals are provided to patrons only and is generally not open to the general public (Figure 68; Goth 1994, 92).



Figure 67. The Riverview Hotel (c.1916), 105 Osborne Street, GNAHRGIS #12578. A good example of a classic small town hotel.



Figure 68. Long Hotel/Spencer House (c.1870), 101 E. Bryant Street, GNAHRGIS #12621. A typical late 19th century wood frame boarding house.

RECOMMENDATIONS FOR FUTURE PRESERVATION INITIATIVES

As per the HPD standard for all historic resource surveys in Georgia, this survey did not include an evaluation of NRHP-eligibility. Further study and evaluation of potentially NRHP-eligible resources is recommended.

Field work results and analysis revealed several opportunities for future preservation initiatives. These include updating the St. Marys NRHP historic district building map, extending the historic district period of significance, and expanding the boundary of the historic district to the east, west, and north. Further survey to the west and north is recommended to more accurately determine an updated period of significance and boundary for the historic district.

Field survey revealed 2 resources constructed within the current period of significance (1750-1924) and NRHP-boundary with good historic integrity that were not previously surveyed or for which no survey form was found in the local planning office or GNAHRGIS. These include the Oak Grove Cemetery (GNAHRGIS 280642) and the Washington Pump and Oak (GNAHRGIS 281603). It is recommended to review the St. Marys NRHP Building Map and update as needed to include these resources as part of the historic district. The Oak Grove Cemetery is partially located within the NRHP district boundaries. It is recommended to evaluate the integrity and significance of this resource for inclusion in the NRHP individually or as part of the district within an expanded boundary to include the entire resource.

Research combined with survey and analysis revealed a continuum of the historic development of the district through the 1970s. Field Survey resulted in the recording or updating of 162 buildings, three (3) objects, and one (1) site in GNAHRGIS constructed from 1925-1982 within the survey area, after the current period of significance for the St. Marys historic district. It is recommended to explore an update to the St. Marys Historic District NRHP Nomination to expand the period of significance to include significant periods of development through 1972, the 50-year historic period. While many papermills closed during the great depression, St. Marys continued to serve as a small port town during Prohibition and through the 1930s as the fishing and fishing-related industries thrived. Following WWII, major growth nation-wide resulted in new construction and renewed interest in the coastal town through the 1950s and 1960s. In the 1970s, historic preservation efforts and the introduction of the National Park Service, with the new embarkation point to Cumberland Island, created a tourist destination to St. Marys. These efforts renewed interest in the community and the resettlement of residents to the city continues today as a result.

It is also recommended to consider expansion of the NRHP boundary to the north, east and west to include the properties within the survey boundary that fall within the updated period of significance. Field survey resulted in the recording or updating of 72 buildings, constructed from 1898-1982, immediately north, east, and west of the current NRHP

district. The lands were developed using similar division of lots in the traditional grid pattern. Most of the buildings that resulted were contemporary to their time demonstrating the evolution of the architectural building stock and of the residents.

Field survey identified potential historic resources to the north and west of the survey area. Prior surveys from 1985 and 2001 identified and recorded historic buildings north of this survey area. As such, these resources were not updated. If the period of significance and boundary were expanded, it is recommended to survey areas to the west and north to determine the location for the new boundary and/or any new districts or individually eligible resources. The area to the east and south are bound by natural barriers, the marsh to the east and the St. Marys River to the south so no further survey work is needed in these directions.

Lastly, Orange Hall is an extremely significant resource which warrants further research and an updated NRHP nomination. It was originally surveyed in 1936 by the Historic American Building Survey. It was individually listed in the NRHP in 1973 for its architectural significance as a Greek Revival style home constructed sometime between c1827 to 1853. The nomination also states that it is significant in the area of Education. The building maintains an extremely high level of historic integrity given its age. It is one of the largest, well-preserved Greek Revival style homes in an urban setting within the region. Due to the age of the NRHP nomination, its architectural significance is lacking and further research may be able to more closely determine its date of construction.

This survey does not change the existing National Register nomination or listing in any way, including but not limited to: contributing/non-contributing status of properties, period of significance, boundaries, and/or additional documentation. Any amendments, additional information, increase or decrease of boundaries must be made through the formal National Register process outlined in 36 CR 60, as amended.

BIBLIOGRAPHY

- Arnow, Isaac F. "History of St. Marys and Camden County," *The Camden County Tribune*, 1952. A series of articles published in The Camden County Tribute in 1952, compiled and available in the Kaye Kole Genealogy and Local History Room in the Chatham County Bull Street Library, Savannah, Georgia.
- Bailey, Eloise. Historical St. Marys Georgia, A Pictorial Glimpse Into The Past. St. Marys Chamber of Commerce, St. Marys, Georgia, 1974.
- Bailey, Eloise and Bruce Powell. *1985 Historic Buildings Survey of St. Marys, Georgia*. City of St. Marys, St. Marys, Georgia, July 1985.
- Barefoot, Patricia. St. Marys and Camden County. Arcadia Publishing, Charleston, South Carolina, 2001.
- Camden County Historical Commission. Camden County, Georgia. Booklet published by the Camden County Historical Commission and Board of Commissioners, 1972. Available in the Kaye Kole Genealogy and Local History Room in the Chatham County Bull Street Library.
- Christian, John H. Founders of St. Marys. Self Published, 1990. Available through the Georgia Pines Public Library System.
- Cloues, Richard. *The American Small House*. Georgia Department of Natural Resources, Historic Preservation Division, no date. Available at https://gadnr.org/sites/default/files/hpd/pdf/AmericanSmallHouse_0.pdf, accessed July 24, 2022.
- Cloues, Richard. *Ranch Houses in Georgia: A Guide to Architectural Styles*. Georgia Department of Natural Resources, Historic Preservation Division, c.2010.
- Federal Writers' Project. Georgia: The WPA Guide to Its Towns and Countryside. American Guide Series, Works Progress Administration in the state of Georgia, with a new introduction by Phinzy Spalding. Georgia Board of Education, University of South Carolina Press, Columbia, 1940.
- Galyon and Associates & PDM, Inc. *Design Guidelines Study for the Historic District of St. Marys, Georgia*. Charleston, South Carolina, 1986.
- Georgia Department of Natural Resources (DNR). *Georgia's Living Places: Historic Houses in Their Landscaped Settings with Commercial Types in Georgia*. Georgia Department of Natural Resources, Atlanta, revised 1992.

- Goth, Paul. Living Downtown: The History of Residential Hotels in the United States. Berkeley: University of California Press, 1994.
- McAlester, Virginia and Lee McAlester. A Field Guide to American Houses. Alfred A. Knopf, New York, revised edition 1998.
- National Register of Historic Places, Orange Hall, St. Marys, Camden County, Georgia, National Register #73000613.
- National Register of Historic Places, St. Marys Historic District, St. Marys, Camden County, Georgia, National Register #76000609.
- Piedmont Preservation. *St. Marys Georgia Historic Resource Inventory Survey Report*. Athens, Georgia, June 2001.
- Reddick, Marguerite. Camden's Challenge: A History of Camden County, Georgia. Camden County Historical Commission, Woodbine, Georgia, revised edition, 1994.
- Thompson, Eloise Bailey. St. Marys United Methodist Church, 1799-1999. St. Marys United Methodist Church, Camden Printing Company, St. Marys Georgia, 1999.
- United States Geological Survey (USGS). *Florida-Georgia St. Marys Quadrangle*. U.S. Department of the Interior with the War Department, 1936 Edition.
- Waters & Son. *The City of St. Marys Georgia*. The New York Herald, New York, New York, March 18, 1862.
- Westberry, Kay Lynn. Oak Grove Cemetery: Quiet Reflections on the History of Saint Marys and Its People. Colorwise Commercial Printing, Roswell, Georgia, 2013.

APPENDIX 1:
Index of Historic Resources Surveyed
&
Cross-Reference of Previous Historic Resource Surveys

NRHP:

“Yes” indicates that the resource is listed in the NRHP. “Yes – district” means that the building is within the St. Marys NRHP historic district, has a construction date within the current period of significance, and maintains historic integrity.

“District X” indicates that the resource may be NRHP-eligible if the district’s period of significance and/or boundary were expanded.

Appendix Table 1. Index of historic resources surveyed.

BLD #	GNAHRGIS	NAME/ADDRESS	STYLE	TYPE	DATE	NRHP
1	12630	Lemuel Johnson Park	N/A	Site	1918	Yes - district
2	12575	Bedel Store/Camden Theater/Submarine Museum - 102 W. St. Marys Street	N/A	retail and office	1911	Yes - district
3	280993	COSM Public Pavillion / St. Marys Street	N/A	Site	1977	Yes - district
4	12583	Lang's Seafood/100 E. St. Marys Street	N/A	American Foursquare	1920	Yes - district
5	280994	100 E. St. Marys Street	N/A	Commercial /Marina	1965	No - integrity
6	12579	101 E. St. Marys Street	N/A	duplex apartment	1950	Yes - district
7	12580	105 E. St. Marys Street	N/A	Unidentified type	1935	Yes - district
8	280762	111 E. St. Marys Street	Plain Style	half courtyard ranch	1956	Yes - district
9	280995	Lang's Marina/100 E. St. Marys Street	N/A	marina	1950	Yes - district
10	280996	105 E. Stable Alley	Dutch Colonial Rev.	Unable to determine	1970	Yes - district
11	12581	Cam Sheffield Building 112 Osborne Street	N/A	retail and office	1940	Yes - district
12	281150	100-102 Osborne Street	N/A	retail and office	1979	No - age
13	12578	Riverview Hotel / Seagle's Saloon / 105 Osborne Street	N/A	Hotel	1916	Yes - individ
14	281043	Market / 111 Osborne Street	N/A	Unable to determine	1945	No - integrity
15	280871	Carriage House Apartments/ 104 W. Stable	N/A	garden apartment	1953	Yes - district

BLD #	GNAHRGIS	NAME/ADDRESS	STYLE	TYPE	DATE	NRHP
		Alley				
16	12577	Lucian Vocelle House / 105 W. Stable Alley	Queen Anne	Hall-Parlor	1900	Yes - district
17	280883	106 W. Stable Alley	N/A	unidentified type	1950	Yes - district
18	280946	108 W. Stable Alley	N/A	front gable bungalow	1958	Yes - district
19	12576	Keta Clark House / 104 Wheeler Street	N/A	Double shotgun	1930	Yes - district
20	12585	Bachlott-Merrow House 101 Wheeler Street	Folk Victorian	side hallway house	1886	Yes - individ
21	12586	105 Wheeler Street	Craftsman	Side Gable Bungalow	1950	Yes - district
22	280979	204 Stable Alley	N/A	Amer. Small House	1955	Yes - district
23	12593	206 W. Stable Alley	N/A	Amer. Small House	1950	Yes - district
24	12592	208 Stable Alley	N/A	Front gable bungalow	1950	Yes - district
25	12591	210 Stable Alley	N/A	Amer. Small House	1950	Yes - district
26	280982	105 Seagrove Street	N/A	Amer. Small House	1950	Yes - district
27	281529	310 W. Bryant Street	N/A	Linear Ranch	1965	No - integrity
28	280984	209 W. Bryant Street	Plain Style	linear ranch	1965	Yes - district
29	12597	Russell-Nettles House / 206 W. Bryant Street	NCR	American Foursquare	1915	Yes - individ
30	12598	Townsend-Gay House 202 W. Bryant Street	N/A	Hip Bungalow	1905	Yes district
32	281089	203 W. Bryant Street	N/A	Linear Ranch	1960	Yes - district

BLD #	GNAHRGIS	NAME/ADDRESS	STYLE	TYPE	DATE	NRHP
33	12589	109 Wheeler Street - OB	Craftsman	Side gable bungalow	1930	Yes - district
34	281090	108 Wheeler Street	N/A	Hall-Parlor	1955	Yes - district
35	280986	111 W. Bryant Street	N/A	Unable to determine	1940	Yes - district
36	281091	109 W. Bryant Street	N/A	Manufactured House	1953	Yes - district
37	281092	109 ½ W. Bryant Street	N/A	Garage Apt.	1965	Yes - district
38	12588	Miller-Arnou House / 105 W. Bryant Street	Folk Victorian	Side Hall House	1900	Yes - district
39	12587	Bank of Camden County 117 Osborne Street	N/A	retail and office	1911	Yes - district
40	281063	NPS Cumberland Is Museum 129 Osborne Street	N/A	Unable to determine	1900/1995	No - integrity
41	281093	The French Quarter / 101 E. Stable Alley	N/A	arcade/strip mall	1945	No - integrity
42	12622	Captain Moore's House / 124 Osborne Street	Folk Victorian	Side Hall House	1905	Yes - district
43	12619	Stotesbury-Johnson House / 126 Osborne Street	N/A	Hall-Parlor	1821	Yes - district
44	12621	Long Hotel/Spencer House 101 E. Bryant Street	N/A	boarding house	1870	Yes - district
45	12620	102 E. Bryant Street	N/A	duplex apartments	1950	Yes - district
46	281096	104 E. Bryant Street	Contemporary	Rambling Ranch	1950	Yes - district
47	281078	200 E. Bryant Street	Plain Style	linear w/ clusters ranch	1960	Yes - district
48	281097	201 E. Bryant Street	N/A	Linear w/clusters ranch	1950	Yes - district

BLD #	GNAHRGIS	NAME/ADDRESS	STYLE	TYPE	DATE	NRHP
49	281082	202 E. Bryant Street	Colonial Revival	Compact Ranch	1960	Yes - district
50	12637	Collier-Casey House / 203 E. Bryant Street	Folk Victorian	Georgian Cottage	1874	Yes - district
51	281088	208 E. Weed Street	N/A	Shotgun	1940	Yes - district
52	281094	206 E. Weed Street	N/A	American small house	1965	No - integrity
53	12640	211 E. Weed Street	N/A	Central Hallway Cottage	1899	Yes - district
54	281099	207 E. Weed Street	N/A	Unidentified bldg type	1965	No
55	281095	204 E. Weed Street	N/A	Unidentified bldg type	1949	Yes - district
56	281100	201 E. Weed Street	Colonial Revival	Linear Ranch	1978	Yes - district
57	12639	200 E. Weed Street (E. Waverly Forest Street)	N/A	hall-parlor	1890	Yes - district
58	12626	Frohock-Bauknecht House / 201 Ready Street	Neoclassical Revival	I-house - central hallway	1907	Yes - individ
59	281114	204 Ready Street	N/A	Ameri. Small House	1950	Yes - district
60	12638	Arnow House 206 Ready Street	N/A	Plantation Plain	1834	Yes - district
61	12624	Bunkley-Guy House / 207 Ready Street	Folk Victorian	Georgian Cottage	1885	Yes - district
62	281143	102 E. Weed Street	Neoclassical Revival	Unidentified bldg type	1950	Yes - district
63	281101	105 E. Weed Street	N/A	Unidentified bldg type	1955	Yes - district

BLD #	GNAHRGIS	NAME/ADDRESS	STYLE	TYPE	DATE	NRHP
64	12623	Briggs House 104 E. Weed Street	N/A	I-house	1860	Yes - district
65	12633	Smith-Aldridge House / 103 E. Weed Street	N/A	Front gable Bungalow	1919	Yes - district
66	281152	101 E. Weed Street	N/A	Front gable Bungalow	1945	Yes - district
67	12610	Our Lady Star of the Sea Catholic Chapel / 201 Osborne Street	N/A	Central Tower church	1837	Yes - district
68	281175	200 Osborne Street	Modern Movemen t	post office	1965	Yes - district
69	12611	203-207 Osborne Street	N/A	multiple retail	1920	No - integrity
70	12613	Sanford Goodbread House / 209 Osborne Street	Folk Victorian	Georgian House	1885	No - integrity
71	12614	Rudolph-Riggins House / 211 Osborne Street	Colonial Revival	American Foursquare	1911	Yes - district
72	12615	Dr. Henry Bacon House / 213 Osborne Street	Federal	I-House	1835	Yes - individ
73	12616	219 ½ Osborne Street	N/A	Single Pen	1910	Yes - district
74	12617	Sterlings Grocery Store / 219 Osborne Street	N/A	Retail and office	1896	Yes - district
75	12625	Bachlott-Porter House 220 Osborne Street	FC Queen Anne	Queen Anne House	1911	Yes - district
76	12605	Vanzant-White House 103 W. Weed Street	N/A	hall-parlor	1900	Yes - district
77	281213	First Baptist Church / 102 W. Weed Street	Colonial Revival	Gable Front Church	1950	Yes - district
78	281272	First Baptist Educational Building / 102 W. Weed Street	N/A	Other - educational building	1940	Yes - district
79	12606	Lundin Chapel / W. Weed at Wheeler	N/A	Unable to determine	1939	Yes - district

BLD #	GNAHRGIS	NAME/ADDRESS	STYLE	TYPE	DATE	NRHP
		Street				
80	281151	St. Marys Lodge No. 109 / 203 Wheeler Street	N/A	Masonic Lodge	1959	Yes - district
81	12609	Rufus Lovell House / 204 Wheeler Street	N/A	Hip Bungalow	1926	Yes - district
82	12599	205 Wheeler Street	N/A	front gable bungalow	1930	Yes - district
83	12607	210 Wheeler street	N/A	Four- Square Cottage	1935	Yes - district
84	281378	211 Wheeler Street	N/A	American small house	1950	Yes - district
85	12601	200 W. Weed Street	Queen Anne	Queen Anne Cottage	1900	Yes - district
86	281442	204 W. Weed Street	Queen Anne	Manufacture d House	1950	Yes - district
87	281397	206 W. Weed Street	N/A	Gable wing house	1900	Yes - district
88	12600	Rose-Lowell House 207 W. Weed Street	N/A	Georgian House	1907	Yes - district
89	12594	203 Seagrove Street	N/A	Americ. Small House	1940	Yes - district
90	281444	204 Seagrove Street	N/A	Linear Ranch	1970	Yes - district
91	281500	209 Seagrove Street	N/A	Hip bungalow	1940/ 1970	No - integrity
92	281446	303 W. Weed Street	N/A	Front gable Bungalow	1944	No - integrity
93	281504	304 W. Weed Street	N/A	American small house	1949	Yes - district
94	12595	305 W. Weed Street	N/A	Bungalow - hip	1935	No - integrity
95	281504	307 W. Weed Street	N/A	Raised FG	1935/	Yes -

BLD #	GNAHRGIS	NAME/ADDRESS	STYLE	TYPE	DATE	NRHP
				bungalow	1960	district
96	12596	Sheffield-Gunn House 208 Bartlett Street	N/A	front gable bungalow	1905	Yes - district
97	281449	402 W. Weed Street	N/A	Ameri. Small House	1965	Yes - district X
98	281527	410 W. Weed Street	N/A	Linear Ranch	1965	Yes - district X
99	280642	Oak Grove Cemetery Bartlett Street	N/A	Site	1788	Yes - district
100	281519	302 Mahan Street	N/A	American small house	1955	Yes - district X
101	281528	304 Mahan Street	N/A	Linear Ranch	1960	Yes - district X
102	281547	306 Mahan Street	N/A	Unidentified type	1960	Yes - district X
103	281530	310 Mahan Street	N/A	Linear ranch	1960	Yes - district X
104	281532	311 Bartlett Street	Contemp orary	Eichler/Line ar Ranch	1965	Yes - district X
105	281548	300 W. Conyers Street	Neo- Colonial	Georgian House	1982	Yes - district
106	281549	211 W. Conyers Street	N/A	Courtyard Ranch	1960	Yes - district X
107	12692	Bealy-Bison House 214 W. Conyers Street	Neoclassi cal Revival	Side Hall House	1907	Yes - district
108	281561	208 W. Conyers	N/A	front gable bungalow	1940	Yes - district X
109	12604	Christ Episcopal Church - 305 Wheeler Street	N/A	Front Gable Church	1889	Yes - district
110	281571	Christ Episcopal Church Office - 305 Wheeler Street	N/A	Other bldg type/office strip	1960	Yes - district X

BLD #	GNAHRGIS	NAME/ADDRESS	STYLE	TYPE	DATE	NRHP
111	12603	Miller-Lovell House 303 Wheeler Street	FC Queen Ann	Georgian Cottage	1900	Yes - district
112	12602	Lovell House 301 Wheeler Street	N/A	Georgian Cottage	1906	Yes - district X
113	281597	310 Wheeler Street	N/A	American Small House	1950	Yes - district X
114	281572	104 W. Conyers Street	N/A	Courtyard Ranch	1952	Yes - district X
115	281598	Presbyterian Parsonage 102 W. Conyers Street	N/A	American small house	1940	Yes - district
116	12636	Union Church \ St. Marys Presbyterian Church - 100 W. Conyers Street	N/A	Central Tower Church	1808	Yes - individ
117	12618	Orange Hall - 303 Osborne Street	Greek Revival	Georgian House	1835	Yes - individ
118	281576	300 Osborne Street	N/A	Commercial multiple retail	1955	Yes - district
119	281600	304 Osborne Street	N/A	Unidentified type	1955	Yes - district
120	12627	John Rudolph House 310 Osborne Street	Greek Revival	I - House	1874	Yes - district
121	12628	Jackson-Clark-McDonnell House / 314 Osborne Street	N/A	Unable to determine type	1801	Yes - individ
122	281603	Washington Pump and Oak / Osborne and Conyers St.	N/A	Site	1799	Yes - district
123	281593	St. Marys United Methodist Church Office / Parsonage 106 E. Conyers Street	Plain Style	Ranch w/clusters	1957	Yes - district X
124	12629	St. Marys United Methodist Church / 105 E. Conyers Street	Greek Revival	Gable Front Church	1858	Yes - district
125	281604	St. Marys United Methodist	New	Gable Front	1966	Yes -

BLD #	GNAHRGIS	NAME/ADDRESS	STYLE	TYPE	DATE	NRHP
		Church and Classrooms / 105 E. Conyers Street	Formalism	Church		district X
126	281594	313 Ready Street	Plain Style	Linear Ranch	1962	Yes - district X
127	12631	307 Ready Street	N/A	Queen Anne Cottage	1905	Yes - district
128	12632	305 Ready Street	N/A	American Four Square	1920	Yes - district
129	281605	303 Ready Street	N/A	pyramidal cottage	1950	Yes - district X
130	12644	Thomas Hawkins House 306 Ready Street	N/A	Georgian cottage	1885	Yes - district
131	12643	Tompkins-Long House 314 Ready Street	Neoclassical Revival	unable to identify	1873/ 1911	Yes - district
132	12642	202 E. Conyers Street	N/A	hall-parlor	1930	Yes - district X
133	281629	204 E. Conyers Street	N/A	American Small House	1940	Yes - district X
134	12645	205 E. Conyers Street	N/A	American Small House	1940	Yes - district X
135	12641	Oliver House 212 E. Conyers Street	N/A	Raised pyramidal cottage	1916	Yes - district
136	12689	300 Norris Street	N/A	American small house	1950	Yes - district X
137	282652	302 Norris Street	N/A	Linear ranch	1955	Yes - district X
138	12690	306 Norris Street	N/A	front gable bungalow	1945	Yes - district X
139	281595	310 Norris Street	N/A	Front gable Bungalow	1960	Yes - district X

BLD #	GNAHRGIS	NAME/ADDRESS	STYLE	TYPE	DATE	NRHP
140	282656	301 E. Conyers Street	N/A	front gable bungalow	1940	Yes - district X
141	12691	Pryor-Lovell House 305 E. Conyers Street	N/A	central hallway cottage	1910	Yes - district X
142	281596	314 E. Conyers Street	N/A	Linear Ranch	1952	Yes - district X
143	282649	401 E. Conyers Street	N/A	Bungalow - Side Gable	1965	Yes - district X
144	282651	310 E. Dillingham Street	N/A	Linear Ranch w/clusters	1960	Yes - district X
145	282657	309 E. Dillingham Street	N/A	Linear Ranch	1958	Yes - district X
146	282654	403 Norris Street	N/A	Side Gable Cottage	1950	Yes - district X
147	282658	407 Norris Street	N/A	Manufactured house	1955	Yes - district X
148	282655	409 Norris Street	N/A	Hip Bungalow	1960	Yes - district X
149	282685	410 Norris Street	N/A	compact ranch/Split level	1960	Yes - district X
150	282685	411 Norris Street	Craftsman	front gable bungalow	1945	Yes - district
151	12646	Casey Hernandez House / 412 Norris Street	N/A	Unable to determine	1920	Yes - district
152	283121	210 E. Dillingham Street	N/A	Gabled Wing Cottage	1945	Yes - district X
153	283123	211 E. Dillingham Street/ garage apartment	N/A	Front gable bungalow	1948	Yes - district
154	12647	208 E. Dillingham Street	N/A	Side gabled cottage	1910	Yes - district X
155	283129	207 E. Dillingham Street	N/A	quadraplex	1970	Yes - district

BLD #	GNAHRGIS	NAME/ADDRESS	STYLE	TYPE	DATE	NRHP
156	283126	205 E. Dillingham Street	N/A	Unidentified type	1955	Yes - district
157	283124	203 E. Dillingham Street	N/A	American small house	1955	Yes - district X
158	12648	200 E. Dillingham Street	N/A	American small house	1945	Yes - district
159	12649	Robert Bunkley House 404 Ready Street	N/A	Foursquare cottage	1915	Yes - district
160	283125	408 Ready Street	N/A	Manufacture House	1955	Yes - district X
161	283127	Parish Hall at Our Lady Star of the Sea Catholic Church - 106 E. Dillingham Street	Contemporary	Parish Hall	1979	Yes - district X
162	283418	St. Mary's Womens Club 412 Osborne Street	Contemporary	Community center	1954	Yes - district
163	283196	Toonerville Trolley Osborne Street	N/A	Object	1928	Yes - district
164	283169	St. Marys City Hall 418 Osborne Street	N/A	City hall	1950/ 1991	No - integrity
165	283128	419 Osborne Street	N/A	quadruplex	1960	Yes - district X
166	283132	421 Osborne Street	N/A	Linear Ranch	1960	Yes - district X
167	283133	101 W. Dillingham Street	N/A	Garage Apartment	1975	Yes - district X
168	283170	City of St. Marys marker crn Osborne/Dillingham St.	N/A	GA Hist. Commission	1954	Yes - district
169	283171	Spanish Occupation of GA Osborne/Dillingham Streets	N/A	monument	1938	Yes - district
170	283134	103 W. Dillingham Street	N/A	Trailer - Blakely Homes	1970	Yes - district X
171	283178	106 W. Dillingham Street	N/A	office	1970	Yes - district

BLD #	GNAHRGIS	NAME/ADDRESS	STYLE	TYPE	DATE	NRHP
172	283179	110 W. Dillingham Street	N/A	Linear w/clusters ranch	1970	Yes - district
173	12688	Pratt-Gillican House 401 Wheeler Street	N/A	central hallway	1820	Yes - district
174	283145	402 Wheeler Street	N/A	Manufacture d House	1955	Yes - district
175	283182	403 Wheeler Street	N/A	American small house	1950	Yes - district
176	283183	407 Wheeler Street	Rustic/ Western	Linear ranch	1967	Yes - district
177	283146	404 Wheeler Street	N/A	Pyramid Cottage	1926	More info needed
178	283147	410 Wheeler Street	N/A	American small house	1955	Yes - district X
179	283184	209 W. Dillingham Street	N/A	Half courtyard ranch	1975	Yes - district
180	283155	200 W. Dillingham Street	N/A	Linear Ranch	1960	Yes - district X
181	283187	202 W. Dillingham Street	N/A	linear ranch	1955	Yes - district
182	283156	208 W. Dillingham Street	N/A	Front gabled Bungalow	1955	No - integrity
183	283183	210 W. Dillingham Street	N/A	American Small House	1955	Yes - district X
184	283188	211 W. Dillingham Street	N/A	Apartment - modern strip	1965	Yes - district
185	283164	404 Seagrove Street	N/A	American small house	1955	Yes - district X
186	12693	406 Seagrove Street	Greek Revival	Side Hall House	1912	Yes - district
187	283194	408 Seagrove Street	N/A	Unidentified	1960	Yes -

BLD #	GNAHRGIS	NAME/ADDRESS	STYLE	TYPE	DATE	NRHP
				type		district
188	283165	502 Wheeler Street	N/A	American small house	1950	Yes - district X
189	283197	504 Wheeler Street	N/A	American small house	1950	Yes - district
190	283166	506 Wheeler Street	N/A	American small house	1950	Yes - district
191	283198	508 Wheeler Street	N/A	American small house	1950	Yes - district
192	283167	510 Wheeler Street	N/A	American small house	1950	Yes - district X
193	283199	512 Wheeler Street	N/A	American small house	1950	Yes - district
194	283168	104 W. Alexander Street	N/A	American small house	1955	Yes - district X
195	283174	Miss Julie's House 501 Osborne Street	N/A	American small house	1960	Yes - district X
196	283204	503 Osborne Street	n/a	American small house	1950	Yes - district
197	284276	505 Osborne Street	N/A	American Small House	1950	No - integrity
198	283202	507 Osborne Street	n/a	American small house	1950	Yes - district
199	283173	509 Osborne Street	N/A	American small house	1960	More info needed
200	283200	511 Osborne Street	N/A	American small house	1950	Yes - district
201	283172	513 Osborne Street	N/A	American small house	1950	Yes - district X
202	12650	Ratcliffe-Hopper House 502 Ready Street	N/A	I-house	1840	Yes - individual
203	12651	Bloodworth House 506 Ready Street	Greek Revival	Side hall house	1850/ 1870	Yes - district

BLD #	GNAHRGIS	NAME/ADDRESS	STYLE	TYPE	DATE	NRHP
204	284280	503 Norris Street	N/A	front gable bungalow	1940	Yes - district
205	283527	504 Norris Street	N/A	unable to determine	1900	Yes - district
206	284281	507 Norris Street	N/A	Front gable bungalow	1945	Yes - district
207	283529	508 Norris Street - log	N/A	unidentified	1970	Yes - district
208	283585	510 Norris Street	N/A	Unable to determine	1960	No - integrity
209	284282	511 Norris Street	Plain	Linear Ranch w/clusters	1955	Yes - integrity
210	283586	600 Norris Street	N/A	Linear ranch	1954	Yes - district
211	12652	601 Norris Street	N/A	American small house	1940	Yes - district
212	283588	602 Norris Street	N/A	Linear w/clusters ranch	1954	Yes - district
213	284294	603 Norris Street	N/A	Linear w/clusters ranch	1955	Yes - district
214	284295	605 Norris Street	N/A	American small house	1956	Yes - district
215	12653	607 Norris Street w/OB	English Vernacular Revival	American small house	1955	Yes - district
216	283606	608 Norris Street	N/A	Linear ranch	1963	Yes - district
217	284296	610 Ready Street w/OB	N/A	American small house	1955	Yes - district
218	283610	608 Ready Street w/OB	N/A	American small house	1955	Yes - district
219	283619	606 Ready Street w/OB	N/A	American small house	1955	Yes - district

BLD #	GNAHRGIS	NAME/ADDRESS	STYLE	TYPE	DATE	NRHP
220	284297	604 Ready Street	N/A	American small house	1955	Yes - district
221	283621	602 Ready Street w/OB	N/A	American small house	1955	Yes - district
222	284298	600 Ready Street	N/A	American small house	1955	Yes - district
223	12634	Harris - Stoddard House 601 Osborne Street	Craftsman	American Foursquare	1929	Yes - district
224	284299	605 Osborne Street	N/A	Retail and office	1950	Yes - district
225	283679	611 Osborne Street	N/A	Multiple retail	1950	No - integrity
226	284300	101 W. Church Street	N/A	Multiple office	1950	Yes - district
227	283685	604 Wheeler Street	N/A	American small house	1950	Yes - district
228	284301	602 Wheeler Street	N/A	American small house	1955	Yes - district
229	283687	600 Wheeler Street	N/A	Linear ranch	1955	Yes - district

Appendix Table 2. Cross-reference with previous historic resource surveys

BLD #	2022 GNAHRGIS	NAME/ADDRESS	1975 Survey	1985 Survey	2001 Survey	NRHP
1	12630	Lemuel Johnson Park	No	No	CM-SM-0056	Yes
2	12575	Bedel Store/Camden Theater/Submarine Museum - 102 W. St. Marys Street	No	40	CM-SM-0001	Yes
3	280993	COSM Public Pavillion / St. Marys Street	No	No	No	
4	12583	Lang's Seafood/ 100 E. St. Marys Street	No	No	CM-SM-0009	Yes
5	280994	100 E. St. Marys Street	No	No	No	
6	12579	101 E. St. Marys Street	No	No	CM-SM-0005	Yes
7	12580	105 E. St. Marys Street	No	No	CM-SM-0006	Yes
8	280762	111 E. St. Marys Street	No	No	No	Yes
9	280995	Lang's Marina/ 100 E. St. Marys Street	No	No	No	
10	280996	105 E. Stable Alley	No	No	No	
11	12581	Cam Sheffield Building 112 Osborne Street	No	No	CM-SM-0007	Yes
12	281150	100-102 Osborne Street	No	No	No	No
13	12578	Riverview Hotel / Seagle's Saloon / 105 Osborne Street	Yes	03	CM-SM-0004	Yes individ
14	281043	Market / 111 Osborne Street	No	No	No	No
15	280871	Carriage House Apartments/ 104 W. Stable Alley	No	No	No	Yes
16	12577	Lucian Vocelle House / 105 W. Stable Alley	Yes	04	CM-SM-0003	Yes - district
17	280883	106 W. Stable Alley	No	No	No	

BLD #	2022 GNAHRGIS	NAME/ADDRESS	1975 Survey	1985 Survey	2001 Survey	NRHP
18	280946	108 W. Stable Alley	No	No	No	
19	12576	Keta Clark House / 104 Wheeler Street	No	50	CM-SM-0002	Yes - district
20	12585	Bachlott-Merrow House 101 Wheeler Street	Yes	02	CM-SM-0011	Yes - individ
21	12586	105 Wheeler Street	No	No	CM-SM-0012	Yes
22	280979	204 Stable Alley	No	No	No	
23	12593	206 W. Stable Alley	No	No	CM-SM-0019	Yes
24	12592	208 Stable Alley	No	No	CM-SM-0018	Yes
25	12591	210 Stable Alley	No	No	CM-SM-0017	Yes
26	280982	105 Seagrove Street	No	No	No	
27	281529	310 W. Bryant Street	No	No	No	No
28	280984	209 W. Bryant Street	No	No	No	
29	12597	Russell-Nettles House / 206 W. Bryant Street	Yes	26	CM-SM-0023	Yes - individ
30	12598	Townsend-Gay House 202 W. Bryant Street	Yes	42	CM-SM-0024	Yes
32	281089	203 W. Bryant Street	No	No	No	
33	12589	109 Wheeler Street - OB	No	No	CM-SM-0015	Yes
34	281090	108 Wheeler Street	No	No	No	
35	280986	111 W. Bryant Street	No	No	No	
36	281091	109 W. Bryant Street	No	No	No	
37	281092	109 ½ W. Bryant Street	No	No	No	
38	12588	Miller-Arnou House / 105 W. Bryant Street	Yes	13	CM-SM-0014	Yes - district
39	12587	Bank of Camden County 117 Osborne Street	Yes	05	CM-SM-0013	Yes - district
40	281063	NPS Cumberland Is Museum 129 Osborne Street	No	No	No	No

BLD #	2022 GNAHRGIS	NAME/ADDRESS	1975 Survey	1985 Survey	2001 Survey	NRHP
41	281093	The French Quarter / 101 E. Stable Alley	No	No	No	No
42	12622	Captain Moore's House / 124 Osborne Street	Yes	06	CM-SM-0048	Yes - district
43	12619	Strotesbury-Johnson House / 126 Osborne Street	No	49	CM-SM-0045	Yes - district
44	12621	Long Hotel/Spencer House 101 E. Bryant Street	Yes	08	CM-SM-0047	Yes - district
45	12620	102 E. Bryant Street	No	No	CM-SM-0046	Yes
46	281096	104 E. Bryant Street	No	No	No	
47	281078	200 E. Bryant Street	No	No	No	
48	281097	201 E. Bryant Street	No	No	No	
49	281082	202 E. Bryant Street	No	No	No	
50	12637	Collier-Casey House / 203 E. Bryant Street	Yes	28	CM-SM-0063	Yes
51	281088	208 E. Weed Street	No	No	No	
52	281094	206 E. Weed Street	No	No	No	No
53	12640	211 E. Weed Street	No	No	CM-SM-0066	Yes
54	281099	207 E. Weed Street	No	No	No	No
55	281095	204 E. Weed Street	No	No	No	
56	281100	201 E. Weed Street	No	No	No	
57	12639	200 E. Weed Street (E. Waverly Forest Street)	No	No	CM-SM-0065	Yes - district
58	12626	Frohock-Bauknecht House / 201 Ready Street	Yes	27	CM-SM-0052	Yes - individ
59	281114	204 Ready Street	No	No	No	
60	12639	Arnow House 206 Ready Street	No	No	CM-SM-0064	Yes - district

BLD #	2022 GNAHRGIS	NAME/ADDRESS	1975 Survey	1985 Survey	2001 Survey	NRHP
61	12624	Bunkley-Guy House / 207 Ready Street	Yes	36	CM-SM-0050	Yes - district
62	281143	102 E. Weed Street	No	No	No	
63	281101	105 E. Weed Street	No	No	No	
64	12623	Briggs House 104 E. Weed Street	No	44	CM-SM-0049	Yes - district
65	12633	Smith-Aldridge House / 103 E. Weed Street	No	55	CM-SM-0059	Yes - district
66	281152	101 E. Weed Street	No	No	No	
67	12610	Our Lady Star of the Sea Catholic Chapel / 201 Osborne Street	Yes	07	CM-SM-0036	Yes - district
68	281175	200 Osborne Street	No	No	No	
69	12611	203-207 Osborne Street	No	No	CM-SM-0037 CM-SM-0038	No
70	12613	Sanford Goodbread House / 209 Osborne Street	Yes	09	CM-SM-0039	No
71	12614	Rudolph-Riggins House / 211 Osborne Street	Yes	10	CM-SM-0040	Yes - district
72	12615	Dr. Henry Bacon House / 213 Osborne Street	Yes	11	CM-SM-0041	Yes - individ
73	12616	219 ½ Osborne Street	No	No	CM-SM-0042	Yes - district
74	12617	Sterlings Grocery Store / 219 Osborne Street	No	47	CM-SM-0043	Yes - district
75	12625	Bachlott-Porter House 220 Osborne Street	Yes	12	CM-SM-0051	Yes - district
76	12605	Vanzant-White House 103 W. Weed Street	No	48	CM-SM-0031	Yes - district
77	281213	First Baptist Church / 102 W. Weed Street	No	No	No	
78	281272	First Baptist Educational Building / 102 W. Weed Street	No	No	No	

BLD #	2022 GNAHRGIS	NAME/ADDRESS	1975 Survey	1985 Survey	2001 Survey	NRHP
79	12606	Lundin Chapel W. Weed at Wheeler Street	No	No	CM-SM-0032	Yes - district
80	281151	St. Marys Lodge No. 109 203 Wheeler Street	No	No	No	
81	12609	Rufus Lovell House - 204 Wheeler Street	No	46	CM-SM-0035	Yes - district
82	12599	205 Wheeler Street	No	No	CM-SM-0025	Yes
83	12607	210 Wheeler street	No	No	CM-SM-0033	Yes
84	281378	211 Wheeler Street	No	No	No	
85	12601	200 W. Weed Street	No	No	CM-SM-0027	Yes
86	281442	204 W. Weed Street	No	No	No	
87	281397	206 W. Weed Street	No	No	No	
88	12600	Rose-Lowell House 207 W. Weed Street	Yes	25	CM-SM-0026	Yes - district
89	12594	203 Seagrove Street	No	No	CM-SM-0020	Yes
90	281444	204 Seagrove Street	No	No	No	Yes
91	281500	209 Seagrove Street	No	No	No	No
92	281446	303 W. Weed Street	No	No	No	No
93	281504	304 W. Weed Street	No	No	No	
94	12595	305 W. Weed Street	No	No	CM-SM-0021	No
95	281504	307 W. Weed Street	No	No	No	
96	12596	Sheffield-Gunn House 208 Bartlett Street	No	No	CM-SM-0022	Yes - district
97	281449	402 W. Weed Street	No	No	No	
98	281527	410 W. Weed Street	No	No	No	
99	280642	Oak Grove Cemetery Bartlett Street	No	01	No	Yes - district
100	281519	302 Mahan Street	No	No	No	

BLD #	2022 GNAHRGIS	NAME/ADDRESS	1975 Survey	1985 Survey	2001 Survey	NRHP
101	281528	304 Mahan Street	No	No	No	
102	281547	306 Mahan Street	No	No	No	
103	281530	310 Mahan Street	No	No	No	
104	281532	311 Bartlett Street	No	No	No	
105	281548	300 W. Conyers Street	No	No	No	
106	281549	211 W. Conyers Street	No	No	No	
107	12692	Bealy-Bison House 214 W. Conyers Street	No	No	CM-SM-0118	Yes - district
108	281561	208 W. Conyers	No	No	No	
109	12604	Christ Episcopal Church - 305 Wheeler Street	Yes	22	CM-SM-0030	Yes - district
110	281571	Christ Episcopal Church Office - 305 Wheeler Street	No	No	No	
111	12603	Miller-Lovell House 303 Wheeler Street	Yes	23	CM-SM-0029	Yes - district
112	12602	Lovell House 301 Wheeler Street	Yes	24	CM-SM-0028	Yes
113	281598	310 Wheeler Street	No	No	No	
114	281572	104 W. Conyers Street	No	No	No	
115	281598	Presbyterian Parsonage 102 W. Conyers Street	No	No	No	
116	12636	Union Church \ St. Marys Presbyterian Church - 100 W. Conyers Street	Yes	17	CM-SM-0062	Yes - individ
117	12618 (80279) (249676)	Orange Hall - 303 Osborne Street	Yes	16	CM-SM-0044	Yes - individ
118	281576	300 Osborne Street	No	No	No	
119	281600	304 Osborne Street	No	No	No	
120	12627	310 Osborne Street	Yes	14	CM-SM-0053	Yes - district

BLD #	2022 GNAHRGIS	NAME/ADDRESS	1975 Survey	1985 Survey	2001 Survey	NRHP
121	12628	Jackson-Clark-McDonnell House / 314 Osborne Street	Yes	15	CM-SM-0054	Yes - individ
122	281603	Washington Pump and Oak - Osborne and Conyers St.	No	No	No	Yes - district
123	281593	St. Marys United Methodist Church Office / Parsonage 106 E. Conyers Street	No	No	No	
124	12629	St. Marys United Methodist Church - 105 E. Conyers Street	Yes	32	CM-SM-0055	Yes - district
125	281604	St. Marys United Methodist Church and Classrooms - 105 E. Conyers Street	No	No	No	
126	281594	313 Ready Street	No	No	No	
127	12631	307 Ready Street	No	No	CM-SM-0057	Yes
128	12632	305 Ready Street	Yes	43	CM-SM-0058	Yes
129	281605	303 Ready Street	No	No	No	
130	12644	Thomas Hawkins House 306 Ready Street	Yes	34	CM-SM-0070	Yes - district
131	12643	Tompkins-Long House 314 Ready Street	Yes	33	CM-SM-0069	Yes - district
132	12642	202 E. Conyers Street	No	No	CM-SM-0068	Yes
133	281629	204 E. Conyers Street	No	No	No	
134	12645	205 E. Conyers Street	No	No	CM-SM-0071	Yes
135	12641	Oliver House 212 E. Conyers Street	Yes	30	CM-SM-0067	Yes - district
136	12689	300 Norris Street	No	No	CM-SM-0115	Yes
137	282652	302 Norris Street	No	No	No	
138	12690	306 Norris Street	Yes	45	CM-SM-0116	Yes
139	281595	310 Norris Street	No	No	No	

BLD #	2022 GNAHRGIS	NAME/ADDRESS	1975 Survey	1985 Survey	2001 Survey	NRHP
140	282656	301 E. Conyers Street	No	No	No	
141	12691	Pryor-Lovell House 305 E. Conyers Street	No	56	CM-SM-0117	Yes - district
142	281596	314 E. Conyers Street	No	No	No	
143	282649	401 E. Conyers Street	No	No	No	
144	282651	310 E. Dillingham Street	No	No	No	
145	282657	309 E. Dillingham Street	No	No	No	
146	282654	403 Norris Street	No	No	No	
147	282658	407 Norris Street	No	No	No	
148	282655	409 Norris Street	No	No	No	
149	282685	410 Norris Street	No	No	No	
150	282685	411 Norris Street	No	No	No	
151	12646	Casey Hernandez House / 412 Norris Street	No	57	CM-SM-0072	Yes - district
152	283121	210 E. Dillingham Street	No	No	No	
153	283123	211 E. Dillingham Street / garage apartment	No	No	No	
154	12647	208 E. Dillingham Street	No	58	CM-SM-0073	Yes
155	283129	207 E. Dillingham Street	No	No	No	
156	283126	205 E. Dillingham Street	No	No	No	
157	283124	203 E. Dillingham Street	No	No	No	
158	12648	200 E. Dillingham Street	No	No	CM-SM-0074	Yes - district
159	12649	Robert Bunkley House 404 Ready Street	No	59	CM-SM-0075	Yes - district
160	283125	408 Ready Street	No	No	No	
161	283127	Parish Hall at Our Lady Star of the Sea Catholic Church / 106 E. Dillingham Street	No	No	No	

BLD #	2022 GNAHRGIS	NAME/ADDRESS	1975 Survey	1985 Survey	2001 Survey	NRHP
162	283418	St. Mary's Womens Club 412 Osborne Street	No	No	No	Yes - district
163	283196	Toonerville Trolley Osborne Street	No	No	No	Yes - district
164	283169	St. Marys City Hall 418 Osborne Street	No	No	No	No
165	283128	419 Osborne Street	No	No	No	
166	283132	421 Osborne Street	No	No	No	
167	283133	101 W. Dillingham Street	No	No	No	
168	283170	City of St. Marys marker crn Osborne/Dillingham St.	No	No	No	
169	283171	Spanish Occupation of GA Osborne/Dillingham Streets	No	No	No	
170	283134	103 W. Dillingham Street	No	No	No	
171	283178	106 W. Dillingham Street	No	No	No	
172	283179	110 W. Dillingham Street	No	No	No	
173	12688	Pratt-Gillican House 401 Wheeler Street	Yes	19	CM-SM-0114	Yes - district
174	283145	402 Wheeler Street	No	No	No	
175	283182	403 Wheeler Street	No	No	No	
176	283183	407 Wheeler Street	No	No	No	
177	283146	404 Wheeler Street	No	No	No	
178	283147	410 Wheeler Street	No	No	No	
179	283184	209 W. Dillingham Street	No	No	No	
180	283155	200 W. Dillingham Street	No	No	No	
181	283187	202 W. Dillingham Street	No	No	No	
182	283156	208 W. Dillingham Street	No	No	No	
183	283183	210 W. Dillingham Street	No	No	No	

BLD #	2022 GNAHRGIS	NAME/ADDRESS	1975 Survey	1985 Survey	2001 Survey	NRHP
184	283188	211 W. Dillingham Street	No	No	No	
185	283164	404 Seagrove Street	No	No	No	
186	12693	406 Seagrove Street	No	60	CM-SM-0119	Yes - district
187	283194	408 Seagrove Street	No	No	No	
188	283165	502 Wheeler Street	No	No	No	
189	283197	504 Wheeler Street	No	No	No	
190	283166	506 Wheeler Street	No	No	No	
191	283198	508 Wheeler Street	No	No	No	
192	283167	510 Wheeler Street	No	No	No	
193	283199	512 Wheeler Street	No	No	No	
194	283168	104 W. Alexander Street	No	No	No	
195	283174	Miss Julie's House 501 Osborne Street	No	No	No	
196	283204	503 Osborne Street	No	No	No	
197	284276	505 Osborne Street	No	No	No	
198	283202	507 Osborne Street	No	No	No	
199	283173	509 Osborne Street	No	No	No	
200	283200	511 Osborne Street	No	No	No	
201	283172	513 Osborne Street	No	No	No	
202	12650	Ratcliffe-Hopper House 502 Ready Street	Yes	37	CM-SM-0076	Yes - indiv
203	12651	Bloodworth House 506 Ready Street	Yes	38	CM-SM-0077	Yes - district
204	284280	503 Norris Street	No	No	No	
205	283527	504 Norris Street	No	No	No	
206	284281	507 Norris Street	No	No	No	

BLD #	2022 GNAHRGIS	NAME/ADDRESS	1975 Survey	1985 Survey	2001 Survey	NRHP
207	283529	508 Norris Street - log	No	No	No	
208	283585	510 Norris Street	No	No	No	
209	284282	511 Norris Street	No	No	No	
210	283586	600 Norris Street	No	No	No	
211	12652	601 Norris Street	No	No	CM-SM-0078	Yes
212	283588	602 Norris Street	No	No	No	
213	284294	603 Norris Street	No	No	No	
214	284295	605 Norris Street	No	No	No	
215	12653	607 Norris Street w/OB	No	No	CM-SM-0079	Yes
216	283606	608 Norris Street	No	No	No	
217	284296	610 Ready Street w/OB	No	No	No	
218	283610	608 Ready Street w/OB	No	No	No	
219	283619	606 Ready Street w/OB	No	No	No	
220	284297	604 Ready Street	No	No	No	
221	283621	602 Ready Street w/OB	No	No	No	
222	284298	600 Ready Street	No	No	No	
223	12634	Harris - Stoddard House 601 Osborne Street	Yes	21	CM-SM-0060	Yes - district
224	284299	605 Osborne Street	No	No	No	
225	283679	611 Osborne Street	No	No	No	No
226	284300	101 W. Church Street	No	No	No	
227	283685	604 Wheeler Street	No	No	No	
228	284301	602 Wheeler Street	No	No	No	
229	283687	600 Wheeler Street	No	No	No	

APPENDIX 2:

St. Marys Survey Map
(with Building Address Numbers)