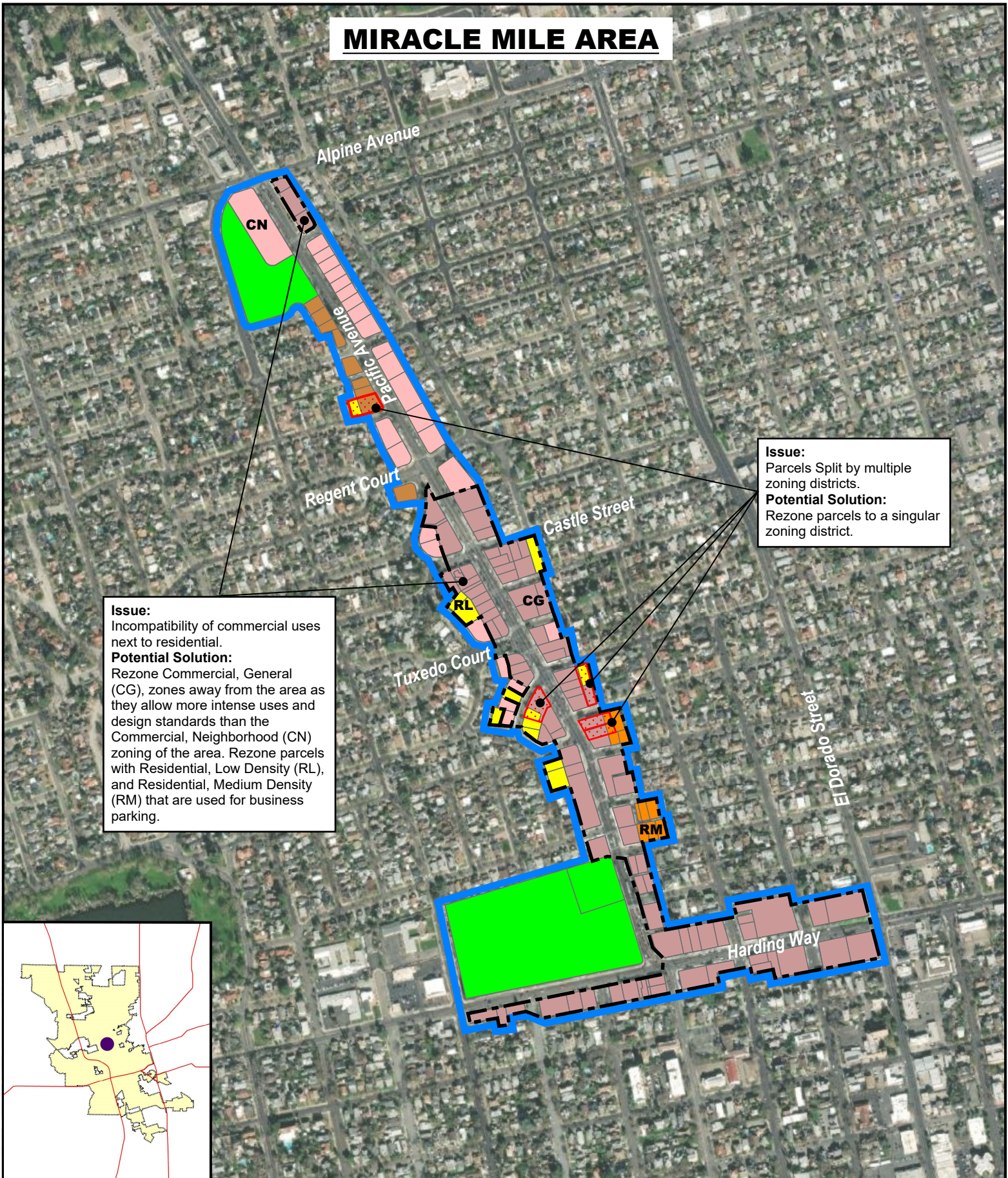


MIRACLE MILE AREA

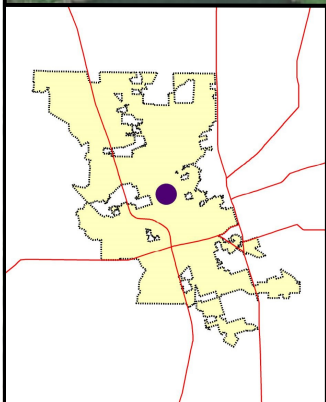


Issue:
Incompatibility of commercial uses next to residential.

Potential Solution:
Rezone Commercial, General (CG), zones away from the area as they allow more intense uses and design standards than the Commercial, Neighborhood (CN) zoning of the area. Rezone parcels with Residential, Low Density (RL), and Residential, Medium Density (RM) that are used for business parking.

Issue:
Parcels Split by multiple zoning districts.

Potential Solution:
Rezone parcels to a singular zoning district.



Legend

	Pacific Avenue Improvement District Boundary		Commercial, General (CG) Zone
	Area of Consideration		Residential, Low Density (RL) Zone
	Parcels with multiple Zones		Residential, Medium Density (RM) Zone
	Commercial, Neighborhood (CN) Zone		Residential, High Density (RH) Zone

AREA MAP & AERIAL PHOTO

MAP FOR REFERENCE ONLY NOT A LEGAL DOCUMENT

City of Stockton, CA makes no claims and no warranties, expressed or implied, concerning the validity or accuracy of the GIS data presented on this map.

Map created by: AKL

Map created on: March 1, 2024

Aerial Photo: Esri, Maxar, Earthstar Geographics, and the GIS User Community

