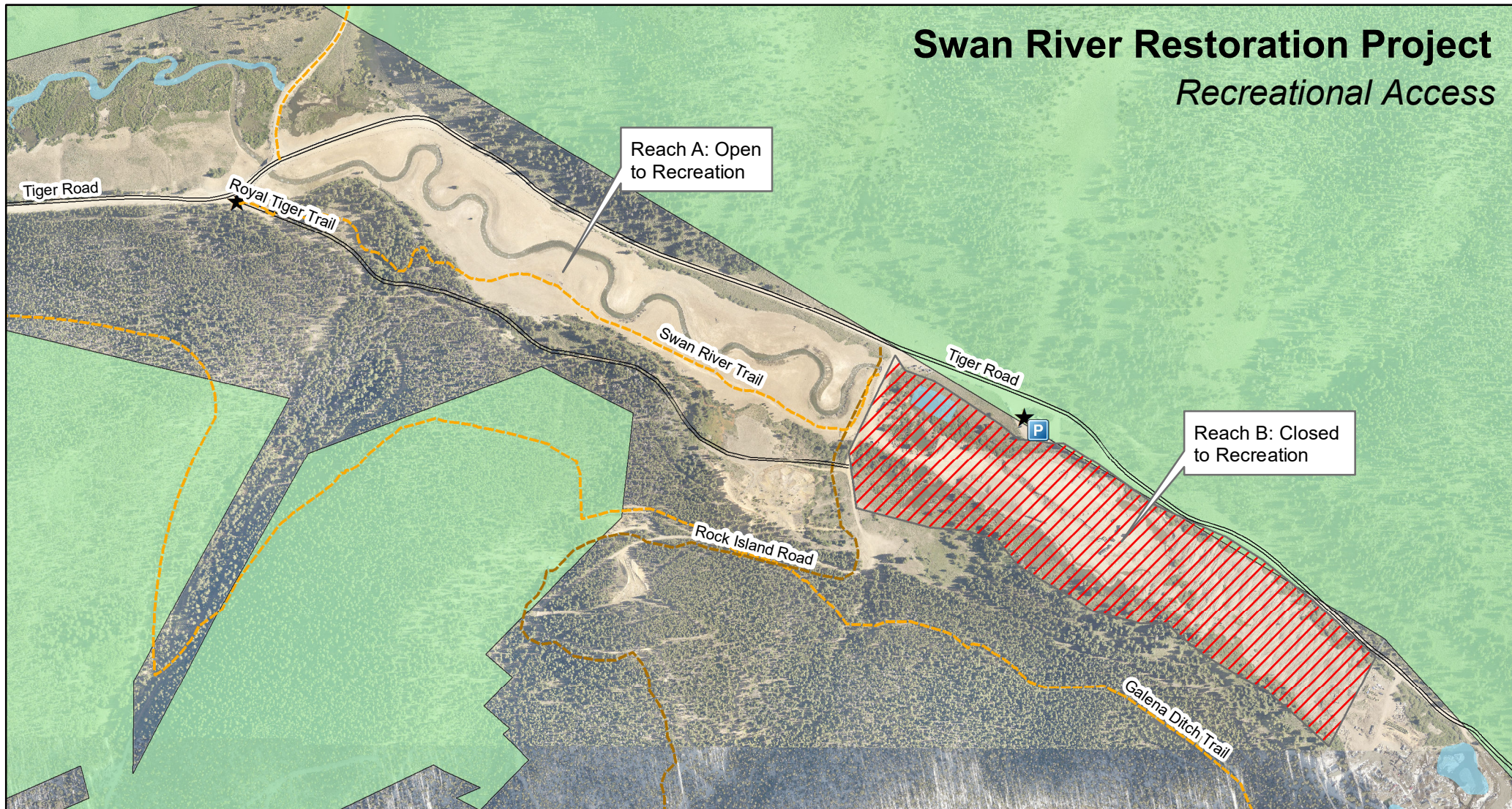


# Swan River Restoration Project








## *Recreational Access*



Reach A is open to the public for non-motorized, passive recreational use. A natural surface trail between the Browns Gulch trailhead and Rock Island Road provides access for biking, hiking, running, angling, skiing, snowshoeing, and other passive, non-motorized recreational uses. The site remains in a fragile condition, so please continue to tread gently and stay on the trail as much as possible as vegetation becomes established. Please keep dogs leashed, or under voice control at all times. Ground birds utilize the riparian fringe for nesting and are sensitive to disruption.

Though portions of the the Swan River Restoration Project site are now open for recreational use, the area remains an active restoration site. Work is ongoing and you may encounter equipment, work crews, detours, and closures at any time. Please respect this sensitive landscape while we work to restore the Swan River valley to a natural condition.

### Legend

-  Public Parking
-  Trails open to bikers and hikers
-  Roads open to highway legal vehicles only
-  Roads open to all vehicles
-  Trailheads and Portals
-  Private Parcels
-  White River National Forest

This map is for display purposes only. Do not use for legal conveyance. Not necessarily accurate by surveying standards and does not comply with National Mapping and Accuracy Standards. Copyright 2020 Summit County Government, Open Space and Trails Department