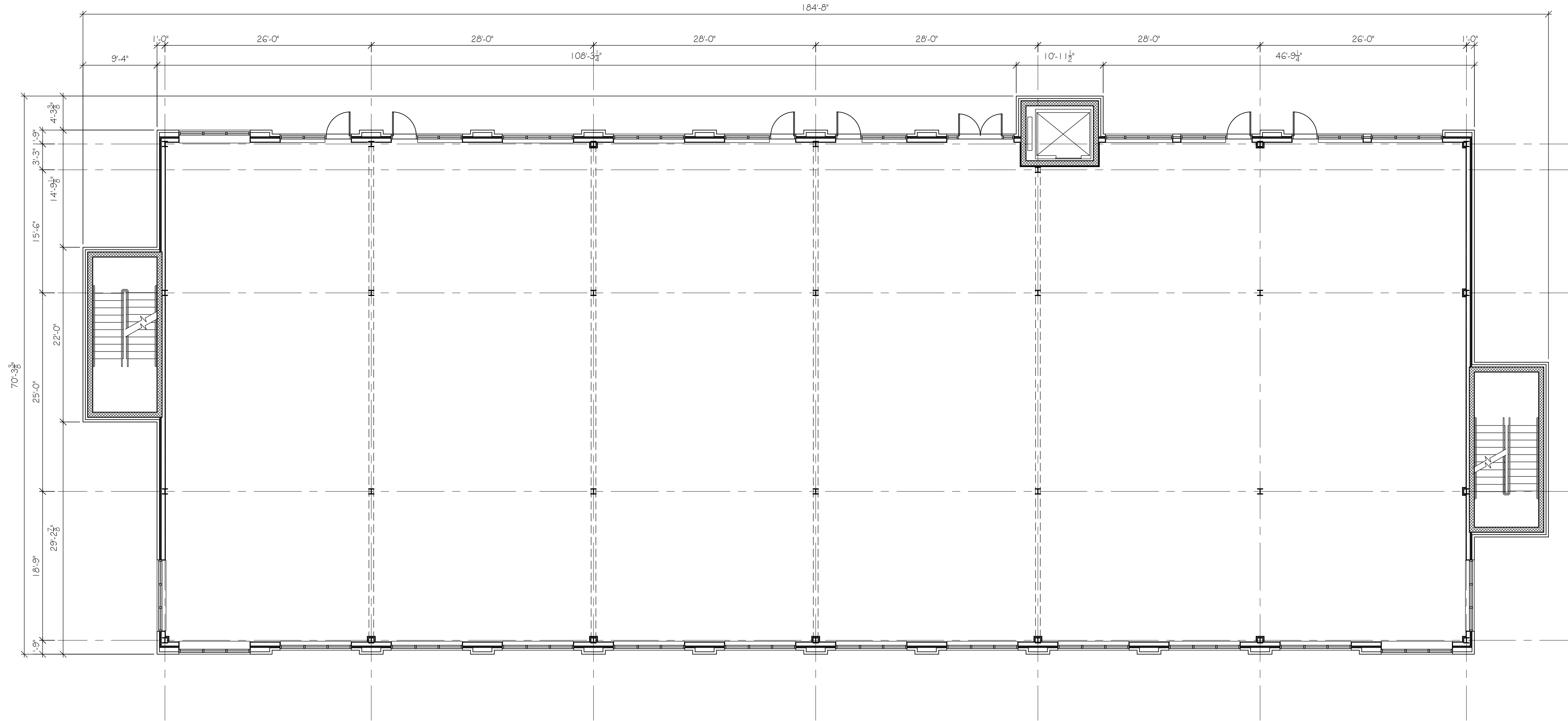
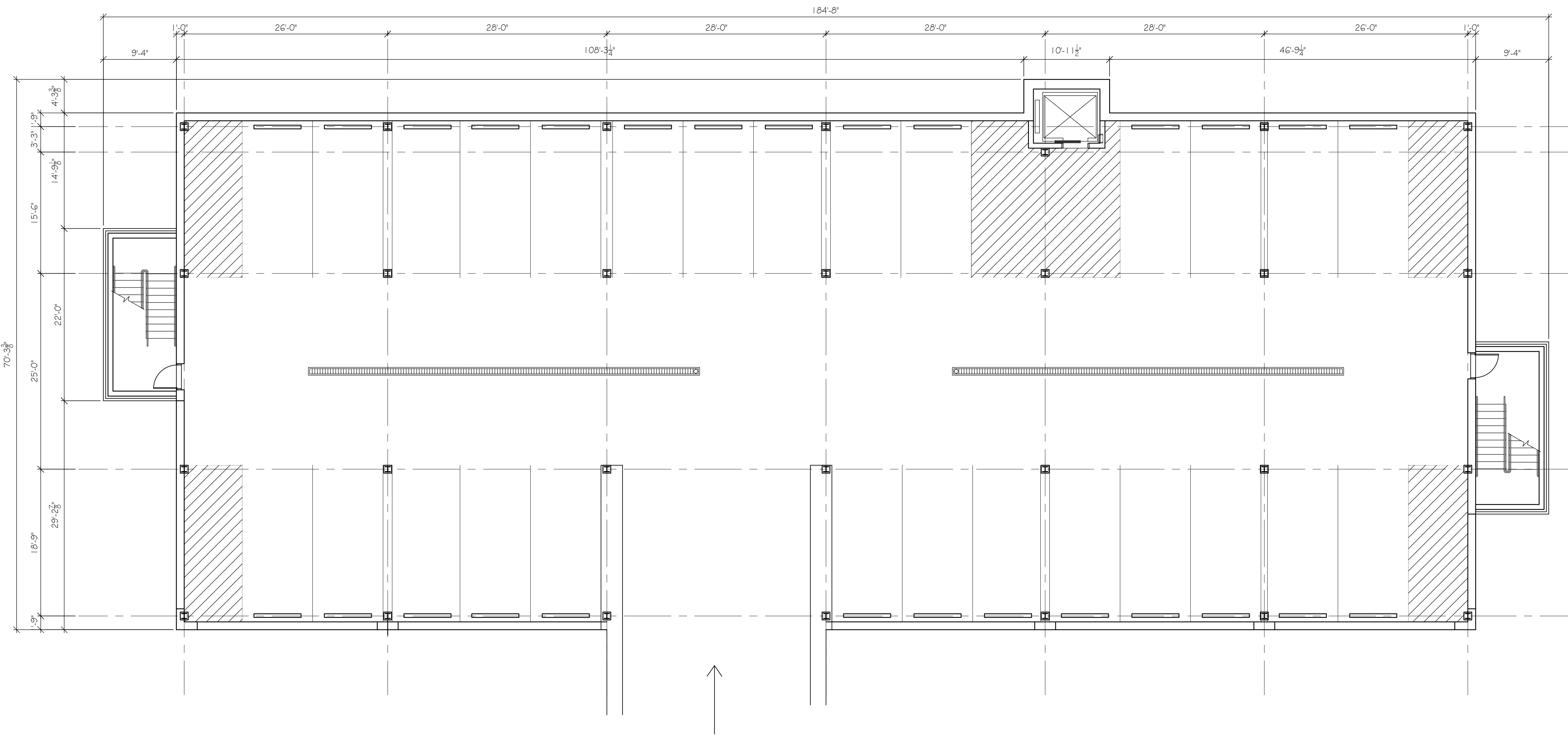


P:\2021\12101 - Mills @ Shepherdstown\12101 - SHEPHERDSTOWN.dwg User: jk 08/08/2021 1:15:44pm



FIRST FLOOR PLAN - RETAIL
SCALE: 1/8" = 1'-0"



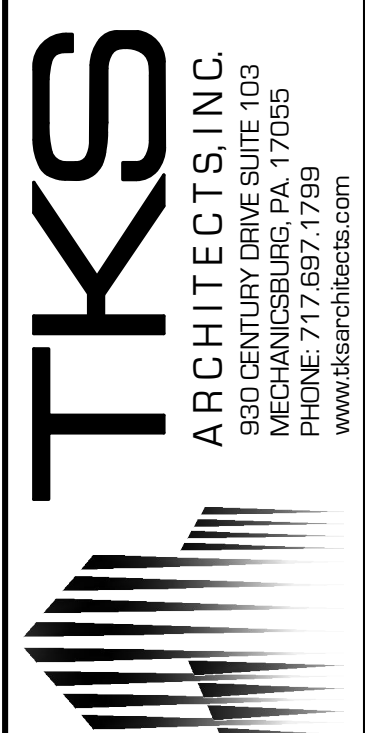
PARKING GARAGE PLAN
SCALE: 1/8" = 1'-0"

NOTE:
PARKING SPACES: (27 SPACES) 9x20'

GENERAL NOTES:

- ALL INTERIOR DIMENSIONS ARE GIVEN TO FACE OF METAL STUD UNLESS NOTED OTHERWISE.
- SEE WALL TYPE LEGEND FOR WALL CONSTRUCTION.
- SEE SHEET GO.02 FOR ADA REQUIREMENTS. REPORT ANY CONFLICTS BETWEEN THE DETAILS ON SHEET GO.02 AND THE INFORMATION ON THIS SHEET (FOUND PRIOR TO OR DURING WORK) TO THE ARCHITECT.
- PROPOSED BUILDING INFORMATION SHOWN WITHIN THE ENTIRETY OF THESE CONTRACT DOCUMENTS IS TO BE VIEWED ONLY AS ACCURATE WITHIN THE LIMITS OF CURRENT DESIGN TECHNOLOGY, AND THEREFORE IT IS THE CONTRACTOR'S RESPONSIBILITY AND PART OF THE SCOPE OF WORK TO VERIFY CONSTRUCTIBILITY OF PROPOSED WORK AND ALL DIMENSIONS PRIOR TO ORDERING MATERIALS AND PROCEEDING WITH WORK, AND TO IMMEDIATELY REPORT ANY INCONSISTENCIES (FOUND PRIOR TO OR DURING WORK) TO THE ARCHITECT.
- ALL INTERIOR WALLS ARE CONSTRUCTED OF 3 5/8" METAL STUD UNLESS NOTED OTHERWISE.
- ALL EXTERIOR WALLS ARE CONSTRUCTED WITH 6" METAL STUD UNLESS NOTED OTHERWISE.

THIS DRAWING IS FOR
ILLUSTRATIVE PURPOSES ONLY,
NOT FOR CONSTRUCTION



COPYRIGHT (C) 2021
BY TKS ARCHITECTS INC.
THIS DRAWING AND
INFORMATION RELATED TO
THIS DRAWING SHALL NOT BE
COPIED OR USED IN ANY WAY
WITHOUT WRITTEN
AUTHORIZATION OF TKS
ARCHITECTS INC. THIS
DRAWING IS NOT FOR
GENERAL USE AND ALL
RIGHTS ARE RESERVED.

CONTRACTOR SHALL VERIFY
ALL DIMENSIONS AND
EXISTING CONDITIONS AND
PROMPTLY REPORT ANY
ERRORS TO TKS ARCHITECTS

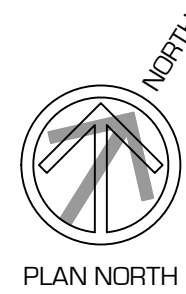
DATE: 04.07.21
DRAWN BY: DPR & KSW
CHECKED BY: DCT
PROJECT #: 21003

#	REVISIONS:	DATE:
1	A	
2	A	
3	A	
4	A	

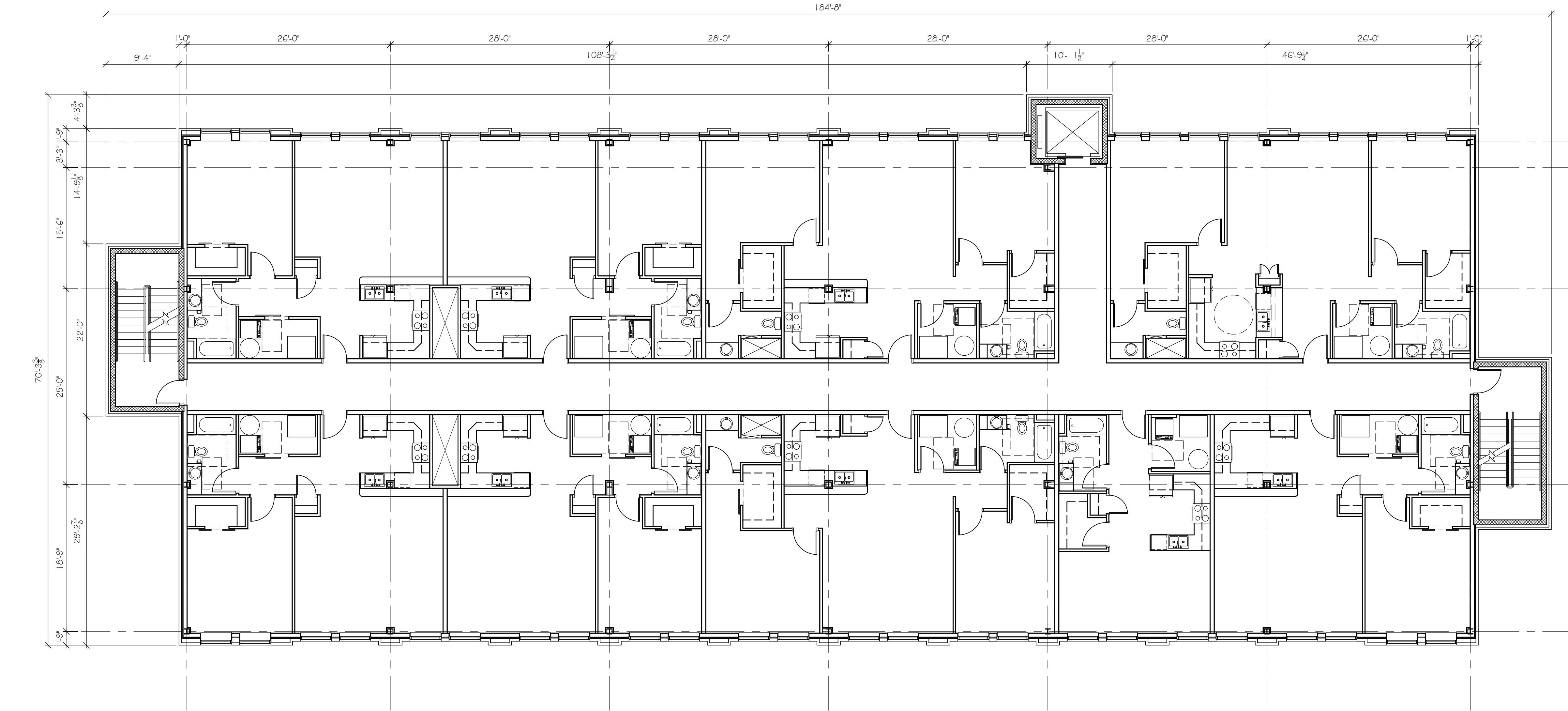
PROPOSED NEW FACILITY:
THE MILLS AT SHEPHERDSTOWN
Upper Allen Township
Cumberland County, PA

OVERALL PARKING
GARAGE AND
FIRST FLOOR PLAN

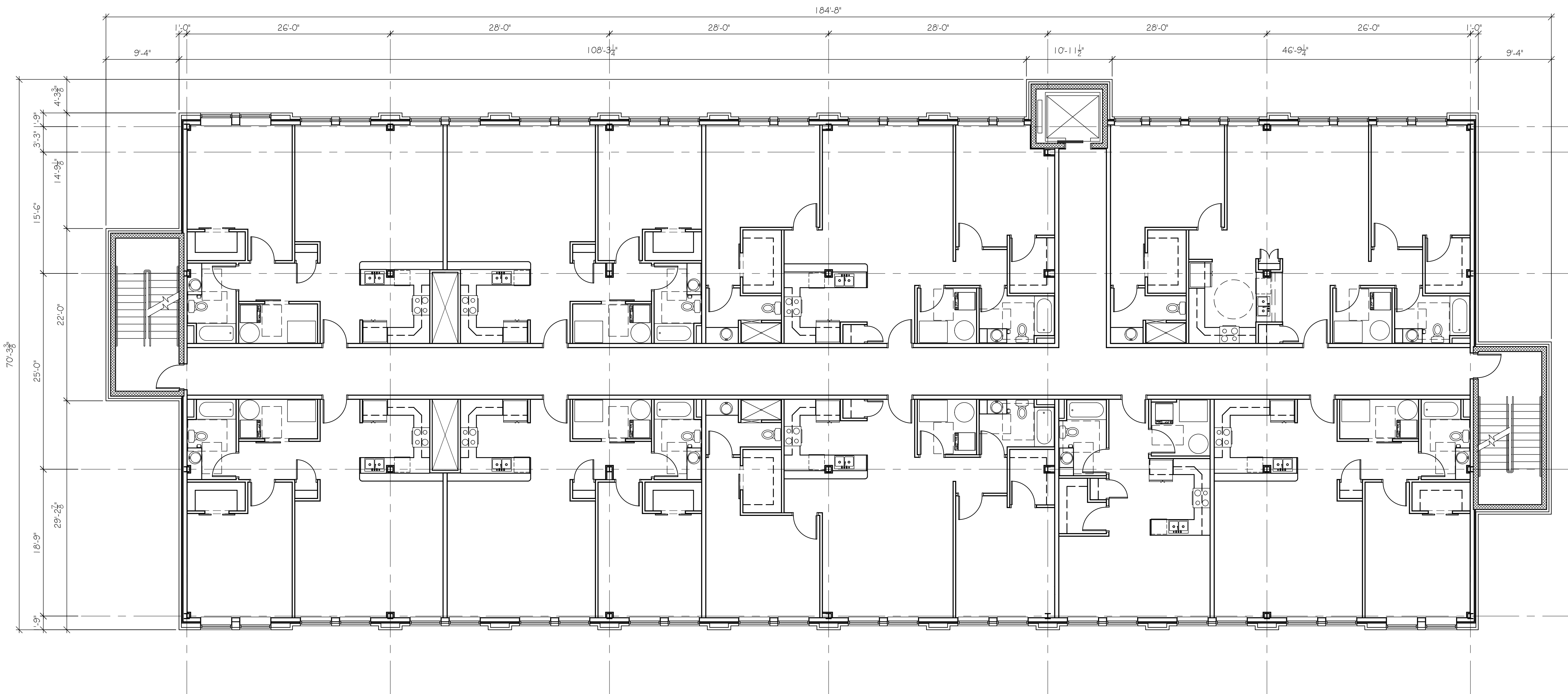
A1.01



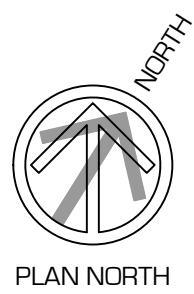
P:\2021\121021 - Mills @ Shepherdstown, LLC - DRAMA\2021 - 2nd Floor.dwg, 20/02/2021, 1:12pm



THIRD FLOOR PLAN - APARTMENTS
SCALE: 1/8" = 1'-0"



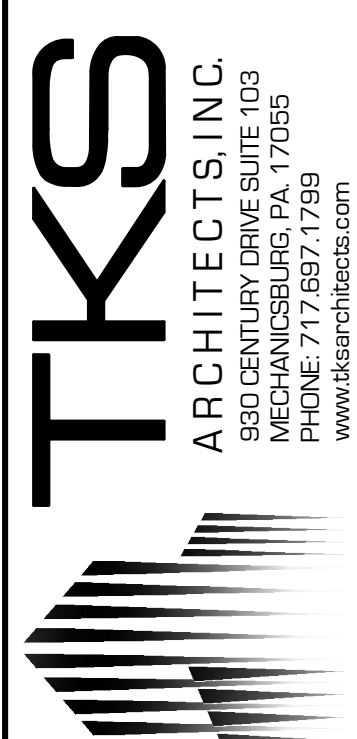
SECOND FLOOR PLAN - APARTMENTS
SCALE: 1/8" = 1'-0"



GENERAL NOTES:

1. ALL INTERIOR DIMENSIONS ARE GIVEN TO FACE OF METAL STUD UNLESS NOTED OTHERWISE.
2. SEE WALL TYPE LEGEND FOR WALL CONSTRUCTION.
3. SEE SHEET GO.02 FOR ADA REQUIREMENTS. REPORT ANY CONFLICTS BETWEEN THE DETAILS ON SHEET GO.02 AND THE INFORMATION ON THIS SHEET (FOUND PRIOR TO OR DURING WORK) TO THE ARCHITECT.
4. PROPOSED BUILDING INFORMATION SHOWN WITHIN THE ENTIRETY OF THESE CONTRACT DOCUMENTS IS TO BE VIEWED ONLY AS ACCURATE WITHIN THE LIMITS OF CURRENT DESIGN TECHNOLOGY, AND THEREFORE IT IS THE CONTRACTOR'S RESPONSIBILITY AND PART OF THE SCOPE OF WORK TO VERIFY CONSTRUCTIBILITY OF PROPOSED WORK AND ALL DIMENSIONS PRIOR TO ORDERING MATERIALS AND PROCEEDING WITH WORK, AND TO IMMEDIATELY REPORT ANY INCONSISTENCIES (FOUND PRIOR TO OR DURING WORK) TO THE ARCHITECT.
5. ALL INTERIOR WALLS ARE CONSTRUCTED OF 3 5/8" METAL STUD UNLESS NOTED OTHERWISE.
6. ALL EXTERIOR WALLS ARE CONSTRUCTED WITH 6" METAL STUD UNLESS NOTED OTHERWISE.

THIS DRAWING IS FOR
ILLUSTRATIVE PURPOSES ONLY,
NOT FOR CONSTRUCTION



COPYRIGHT (C) 2021
BY TKS ARCHITECTS INC.
THIS DRAWING AND
INFORMATION RELATED TO
THIS DRAWING SHALL NOT BE
COPIED OR USED IN ANY WAY
WITHOUT WRITTEN
AUTHORIZATION OF TKS
ARCHITECTS INC. THIS
DRAWING IS NOT FOR
GENERAL USE AND ALL
RIGHTS ARE RESERVED.

CONTRACTOR SHALL VERIFY
ALL DIMENSIONS AND
EXISTING CONDITIONS AND
PROMPTLY REPORT ANY
ERRORS TO TKS ARCHITECTS

DATE: 04.07.21
DRAWN BY: DPR & KSW
CHECKED BY: DCT
PROJECT #: 21003

#	REVISIONS:	DATE:
1	A	
2	A	
3	A	
4	A	

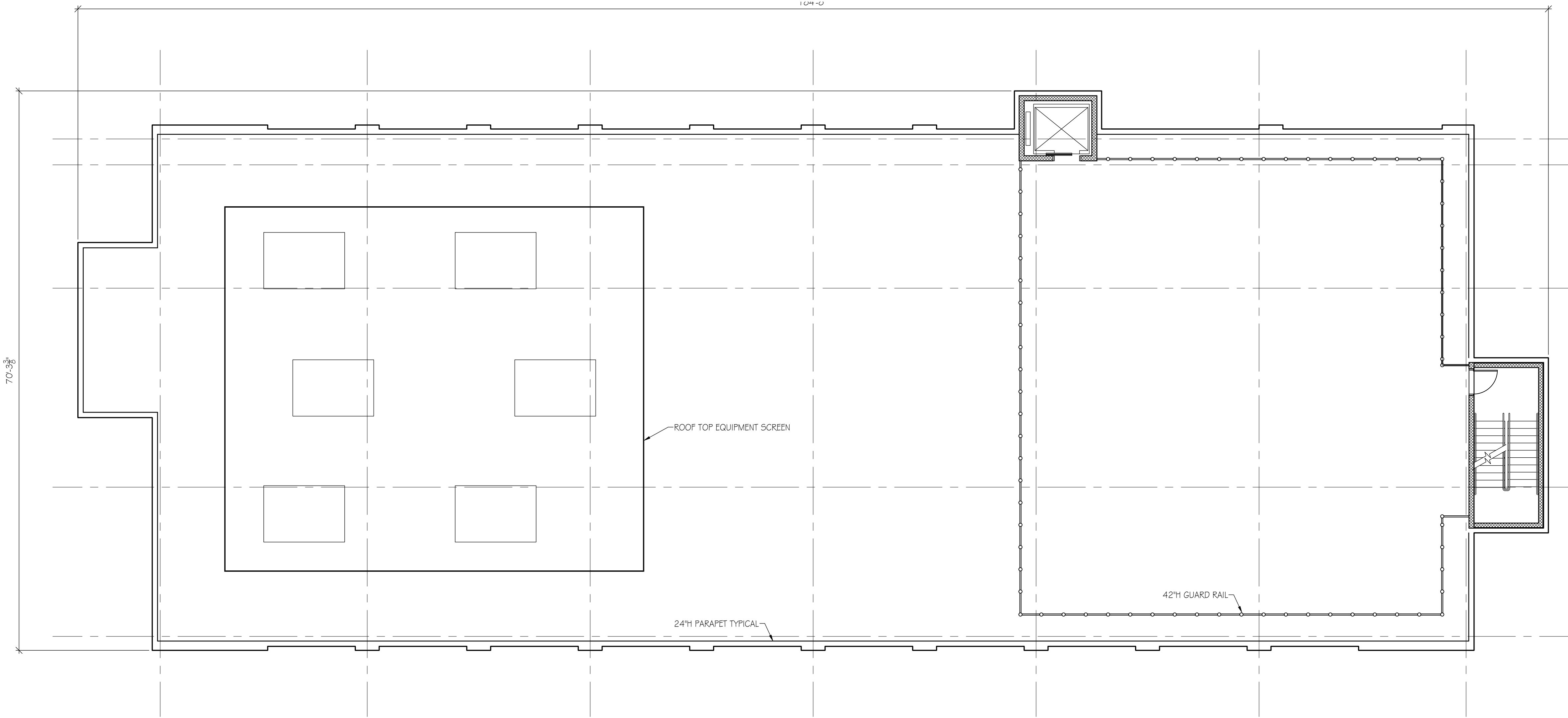
PROPOSED NEW FACILITY:

THE MILLS AT SHEPHERDSTOWN
Upper Allen Township
Cumberland County, PA

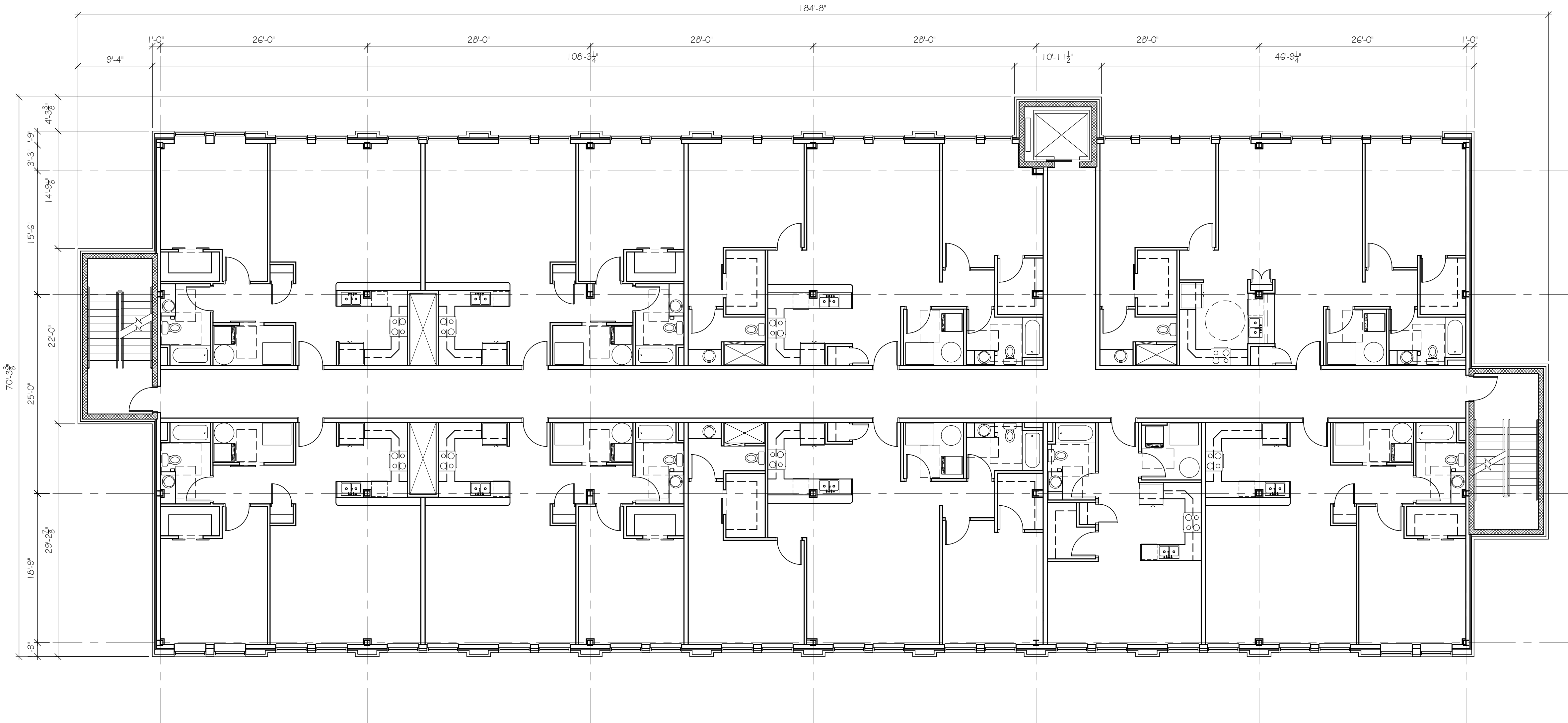
OVERALL SECOND
AND THIRD FLOOR
PLAN

A1.02

P:\2021\121021 - Mills @ Shepherdstown\121021 - Mills @ Shepherdstown.dwg 20/02/2021 11:52am



ROOF PLAN
SCALE: 1/8" = 1'-0"



FOURTH FLOOR PLAN - APARTMENTS
SCALE: 1/8" = 1'-0"

GENERAL NOTES:

- ALL INTERIOR DIMENSIONS ARE GIVEN TO FACE OF METAL STUD UNLESS NOTED OTHERWISE.
- SEE WALL TYPE LEGEND FOR WALL CONSTRUCTION.
- SEE SHEET GO.02 FOR ADA REQUIREMENTS. REPORT ANY CONFLICTS BETWEEN THE DETAILS ON SHEET GO.02 AND THE INFORMATION ON THIS SHEET (FOUND PRIOR TO OR DURING WORK) TO THE ARCHITECT.
- PROPOSED BUILDING INFORMATION SHOWN WITHIN THE ENTIRETY OF THESE CONTRACT DOCUMENTS IS TO BE VIEWED ONLY AS ACCURATE WITHIN THE LIMITS OF CURRENT DESIGN TECHNOLOGY, AND THEREFORE IT IS THE CONTRACTOR'S RESPONSIBILITY AND PART OF THE SCOPE OF WORK TO VERIFY CONSTRUCTABILITY OF PROPOSED WORK AND ALL DIMENSIONS PRIOR TO ORDERING MATERIALS AND PROCEEDING WITH WORK, AND TO IMMEDIATELY REPORT ANY INCONSISTENCIES (FOUND PRIOR TO OR DURING WORK) TO THE ARCHITECT.
- ALL INTERIOR WALLS ARE CONSTRUCTED OF 3 5/8" METAL STUD UNLESS NOTED OTHERWISE.
- ALL EXTERIOR WALLS ARE CONSTRUCTED WITH 6" METAL STUD UNLESS NOTED OTHERWISE.

THIS DRAWING IS FOR
ILLUSTRATIVE PURPOSES ONLY,
NOT FOR CONSTRUCTION



COPYRIGHT (C) 2021
BY TKS ARCHITECTS INC.
THIS DRAWING AND
INFORMATION RELATED
TO THIS DRAWING SHALL NOT BE
COPIED OR USED IN ANY WAY
WITHOUT WRITTEN
AUTHORIZATION OF TKS
ARCHITECTS INC. THIS
DRAWING IS NOT FOR
GENERAL USE AND ALL
RIGHTS ARE RESERVED.

CONTRACTOR SHALL VERIFY
ALL DIMENSIONS AND
EXISTING CONDITIONS AND
PROMPTLY REPORT ANY
ERRORS TO TKS ARCHITECTS

DATE: 04.07.21
DRAWN BY: DPR & KSW
CHECKED BY: DCT
PROJECT #: 21003

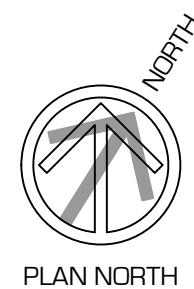
#	REVISIONS:	DATE:
1	A	
2	A	
3	A	
4	A	

PROPOSED NEW FACILITY:

THE MILLS AT SHEPHERDSTOWN
Upper Allen Township
Cumberland County, PA

OVERALL FORTH
FLOOR PLAN

A1.03

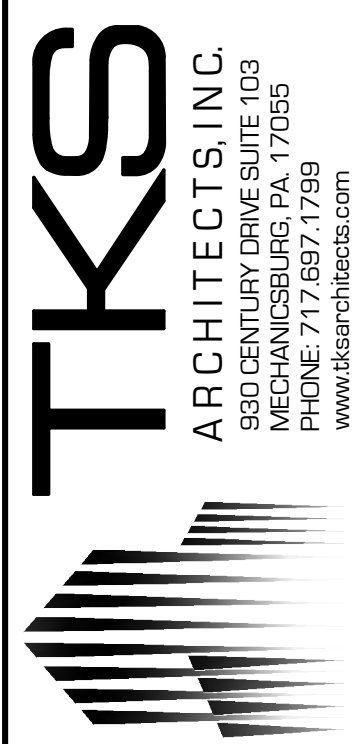


P:\2021\11-2021 - Mills at Shepherdstown\11-2021 - Mills at Shepherdstown.dwg 2021-11-20 11:24am



NORTH ELEVATION
SCALE 3/16" = 1'-0"

THIS DRAWING IS FOR
ILLUSTRATIVE PURPOSES ONLY,
NOT FOR CONSTRUCTION



COPYRIGHT (C) 2021
BY TKS ARCHITECTS, INC.
THIS DRAWING AND
INFORMATION RELATED TO
THIS DRAWING SHALL NOT BE
COPIED OR USED IN ANY WAY
WITHOUT WRITTEN
AUTHORIZATION OF TKS
ARCHITECTS, INC. THIS
DRAWING IS NOT FOR
GENERAL USE AND ALL
RIGHTS ARE RESERVED.

CONTRACTOR SHALL VERIFY
ALL DIMENSIONS AND
EXISTING CONDITIONS AND
PROMPTLY REPORT ANY
ERRORS TO TKS ARCHITECTS

DATE: 04.07.21
DRAWN BY: DPH & KSW
CHECKED BY: DPH
PROJECT #: 21003

#	REVISIONS:	DATE:
1	A	
2	A	
3	A	
4	A	

PROPOSED NEW FACILITY:
THE MILLS AT SHEPHERDSTOWN
Upper Allen Township
Cumberland County, PA

ELEVATIONS

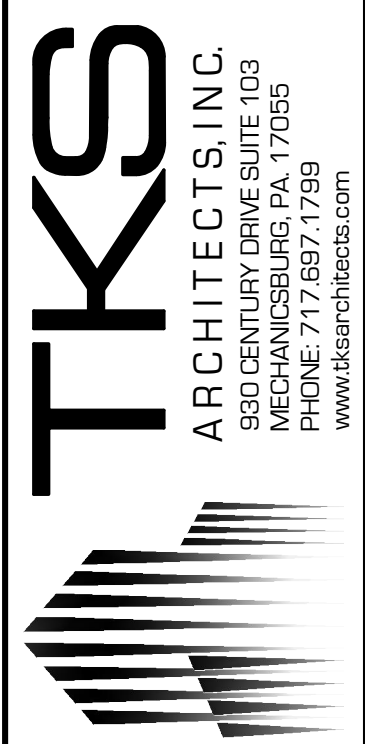
A2.01

P:\2021\121021 - Mills @ Shepherdstown\1210 - SHEPHERDSTOWN.dwg 20x34 Paper 12/08/2021 1:15pm



SOUTH ELEVATION
SCALE 3/16" = 1'-0"

THIS DRAWING IS FOR
ILLUSTRATIVE PURPOSES ONLY,
NOT FOR CONSTRUCTION



COPYRIGHT © 2021
BY TKS ARCHITECTS, INC.
THIS DRAWING AND
INFORMATION RELATED TO
THIS DRAWING SHALL NOT BE
COPIED OR USED IN ANY WAY
WITHOUT WRITTEN
AUTHORIZATION OF TKS
ARCHITECTS, INC. THIS
DRAWING IS NOT FOR
GENERAL USE AND ALL
RIGHTS ARE RESERVED.

CONTRACTOR SHALL VERIFY
ALL DIMENSIONS AND
EXISTING CONDITIONS AND
PROMPTLY REPORT ANY
ERRORS TO TKS ARCHITECTS

DATE: 04.07.21
DRAWN BY: DPR & KSW
CHECKED BY: DCT
PROJECT #: 21003

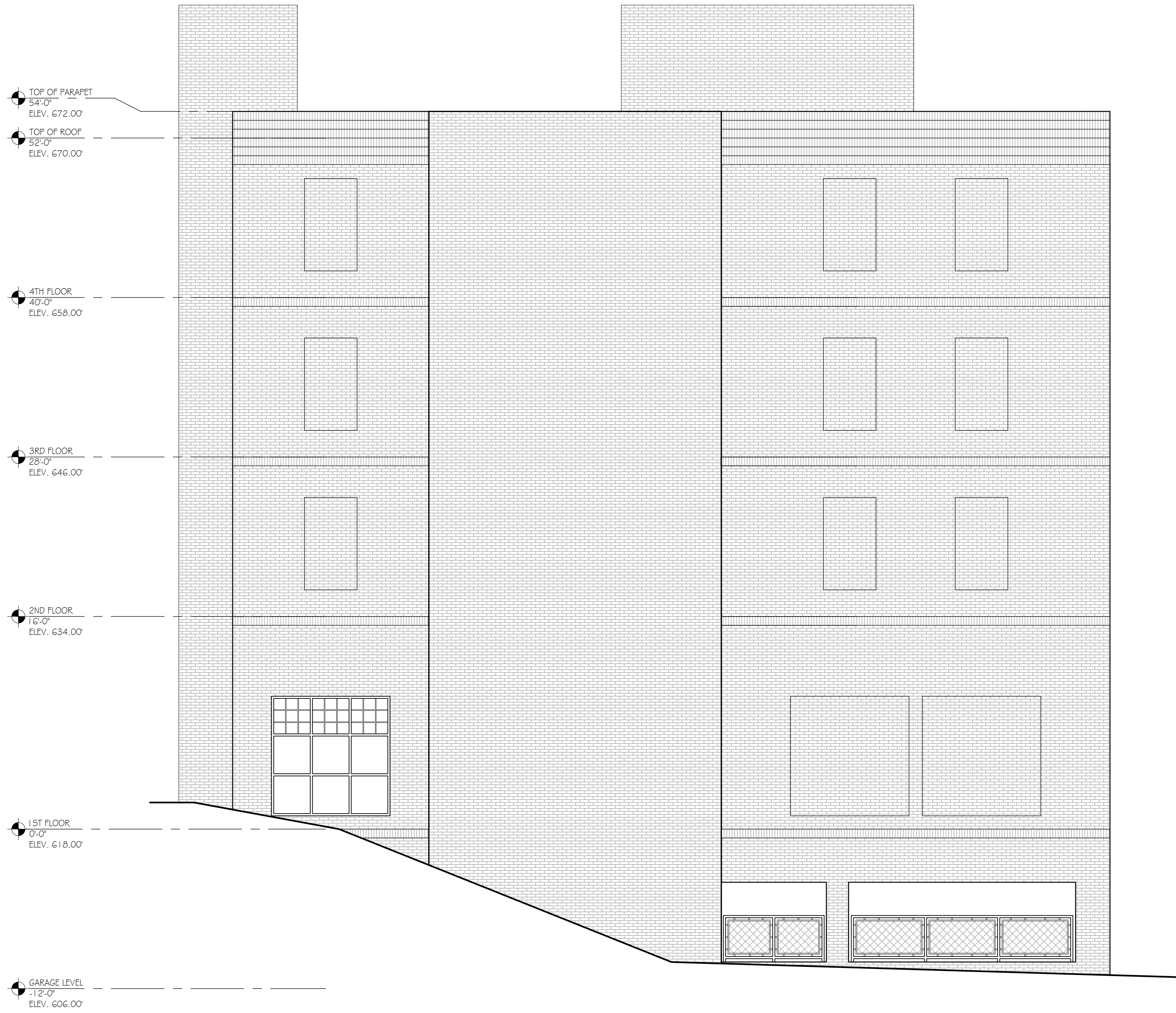
#	REVISIONS:	DATE:
1	A	
2	A	
3	A	
4	A	

PROPOSED NEW FACILITY:
THE MILLS AT SHEPHERDSTOWN
Upper Allen Township
Cumberland County, PA

ELEVATIONS

A2.02

P:\2021\121021 - Mills @ Shepherdstown.dwg 20x34.dwg Apr 08 2021 1:15pm

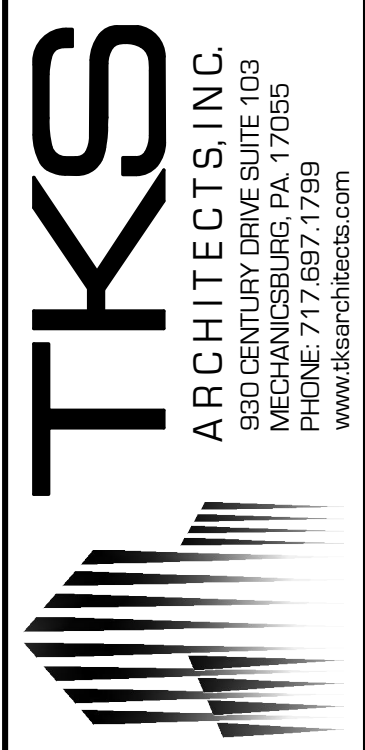


WEST ELEVATION
SCALE 3/16" = 1'-0"



EAST ELEVATION
SCALE 3/16" = 1'-0"

THIS DRAWING IS FOR
ILLUSTRATIVE PURPOSES ONLY,
NOT FOR CONSTRUCTION



COPYRIGHT © 2021
BY TKS ARCHITECTS, INC.
THIS DRAWING AND
INFORMATION RELATED TO
THIS DRAWING SHALL NOT BE
COPIED OR USED IN ANY WAY
WITHOUT WRITTEN
AUTHORIZATION OF TKS
ARCHITECTS, INC. THIS
DRAWING IS NOT FOR
GENERAL USE AND ALL
RIGHTS ARE RESERVED.

CONTRACTOR SHALL VERIFY
ALL DIMENSIONS AND
EXISTING CONDITIONS AND
PROMPTLY REPORT ANY
ERRORS TO TKS ARCHITECTS

DATE: 04.07.21
DRAWN BY: DPR & KSW
CHECKED BY: DCT
PROJECT #: 21003

#	REVISIONS:	DATE:
1	A	
2	A	
3	A	
4	A	

PROPOSED NEW FACILITY:
THE MILLS AT SHEPHERDSTOWN
Upper Allen Township
Cumberland County, PA

ELEVATIONS

A2.03