

ORDINANCE NO. 2022-35

AN ORDINANCE GRANTING A VARIANCE UNDER SECTION 82-55 TO SECTION 6-101 OF THE CODE OF ORDINANCES FOR THE VILLAGE OF CHERRY VALLEY, ILLINOIS TO ALLOW A TWO-FACED ELECTRONIC MESSAGE BOARD ON THE PROPERTY COMMONLY KNOWN AS 7163 CHARLES ST., ROCKFORD, ILLINOIS PIN: 12-35-352-006 (ARBY'S)

WHEREAS, the Board of Trustees for the Village of Cherry Valley, Illinois has been presented with a petition for a variance under Section 82-55 to Section 6-101 of the Code of Ordinances, Village of Cherry Valley, to allow a two faced electronic message board at 7163 Charles Street, Rockford, Illinois on the legally described property known as PIN: 12-35-352-006; and,

WHEREAS, the Planning and Zoning Commission did convene on August 17, 2022, and reviewed the request of the petitioner; and,

WHEREAS, at the Planning and Zoning Commission meeting of August 17, 2022, after making the necessary findings required for the issuance of a variance, the Planning and Zoning Commission did unanimously recommend the granting of the requested variance.

NOW, WHEREFORE, be it ordained by the President and Board of Trustees for the Village of Cherry Valley, Illinois, as follows:

SECTION 1: A variance shall and hereby is granted under Section 82-55 to Section 6-101 under the Code of Ordinances, Village of Cherry Valley, Illinois, to allow a two faced electronic message board at 7163 Charles Street, Rockford, Illinois on the property described as PIN: 12-35-352-006, said property as well as the location of the signage being depicted on a map attached hereto as Exhibit "A".

SECTION 2: This Ordinance shall be in full force and effect from and after its approval, passage, and publication in pamphlet form.

PASSED UPON MOTION BY: NANCY BELT

SECONDED BY: SALLY HOLLEMBEAK

BY ROLL CALL VOTE THIS 31ST DAY OF AUGUST, 2022

AS FOLLOWS:

VOTING "AYE": NANCY BELT, JEFF FUSTIN, SALLY HOLLEMBEAK,
MIKE NEVILLE, BRANDI PEARSE, CARL WEDIG

VOTING "NAY": NONE

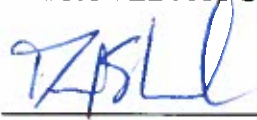
ABSENT, ABSTAIN, OTHER: NONE

ATTEST:

APPROVED: AUGUST 31, 2022

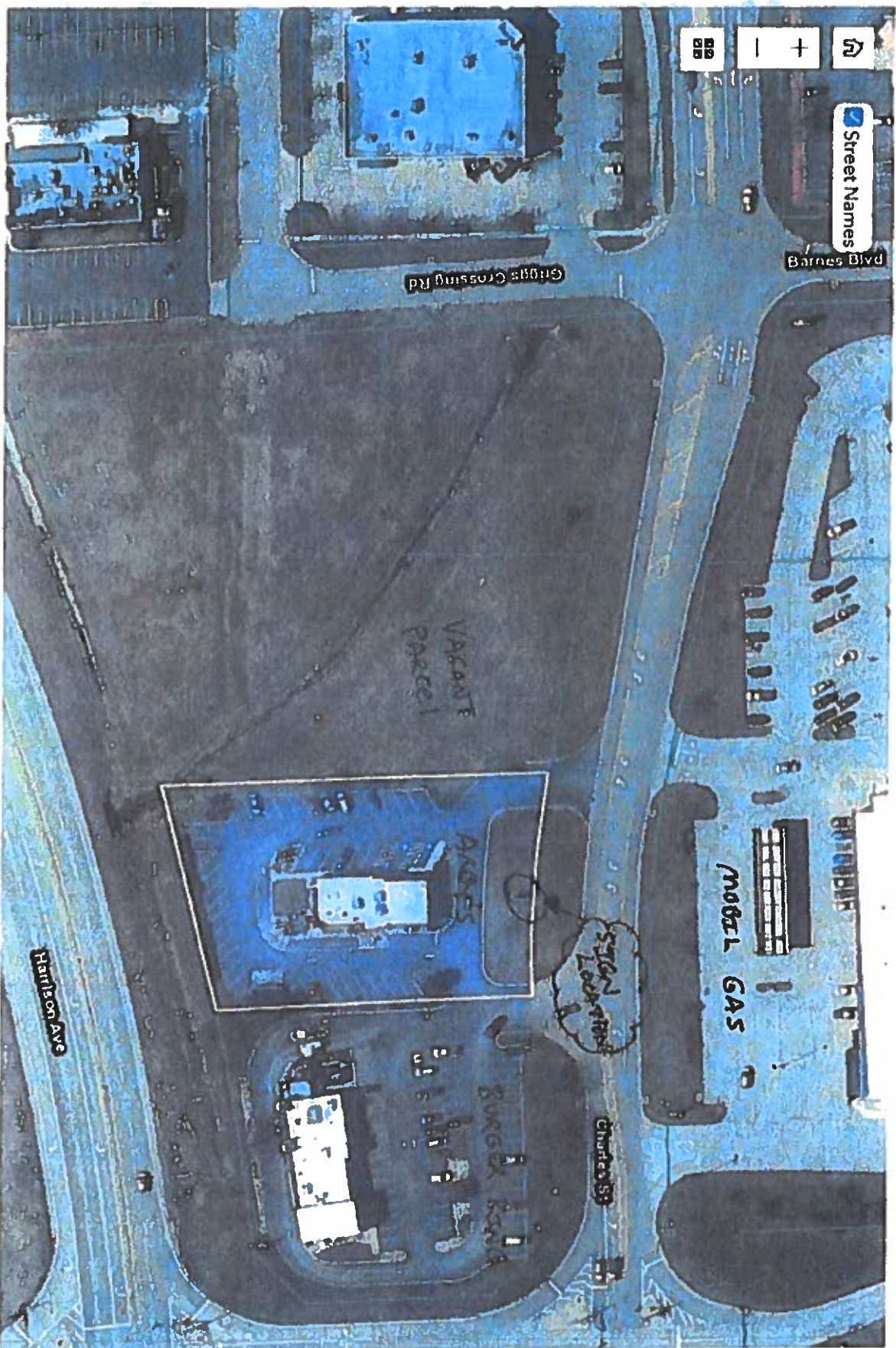


KATHY TRIMBLE, VILLAGE CLERK



DAVID SCHROEDER, VILLAGE PRESIDENT

Y:\JES Cherry Valley\Ordinances\Variances\Section 6-101 Arby's Electronic Sign.docx



SITE MAP